



42A02SW0026 11 BADEN

010

Diamond Drilling

Township of Baden

Report NO: 11

Work performed by: Ronda Copper Mines Ltd.

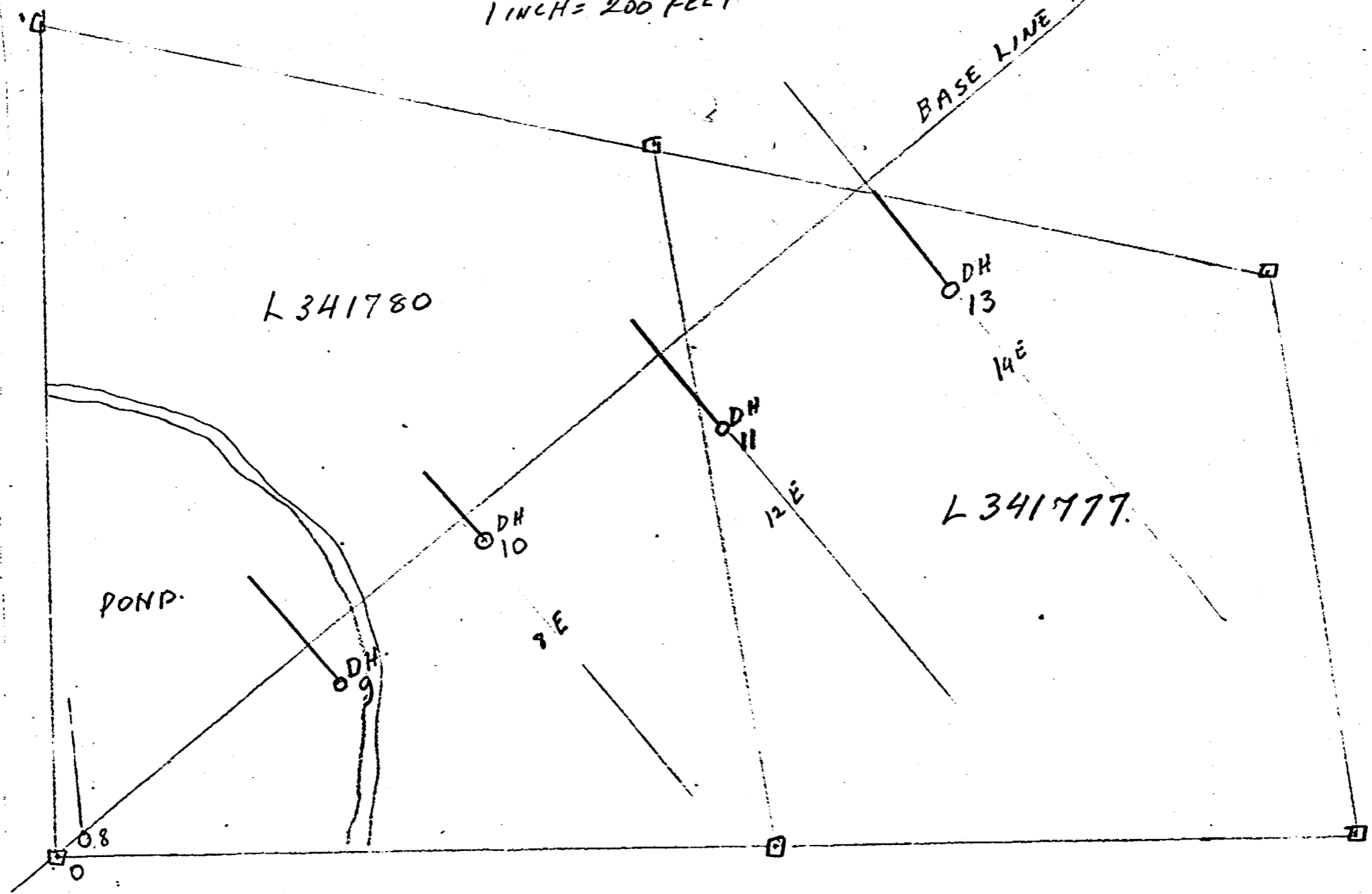
Claim NO	Hole NO	Footage	Date	Note
L 341780	9	301'	Feb/74	(1)
	10	200'	Mar/74	(1)
L 341777	11	304'	Mar/74	(1)
	13	377'	Mar/74	(1)

Notes:

(1) 200/74

DIAMOND DRILL HOLES
RONDA COPPER MINES LIMITED
BADEN TOWNSHIP
1 INCH = 200 FEET

Rattaler - Sept 24
1974



#200/74 BADEN TWP
RONDA COPPER MINES LTD

DIAMOND DRILL RECORD

PROPERTY RONDA - BADEN TWP. HOLE NO. 9

CLAIM 341780

SHEET NUMBER 1 (of 2) SECTION FROM _____ TO _____ STARTED Feb 20, 1974
 LATITUDE L 5 E, 75' SOUTH DATUM _____ COMPLETED Feb 28, 1974
 DEPARTURE OF BASELINE BEARING 320 ULTIMATE DEPTH 301
 ELEVATION _____ DIP -49° PROPOSED DEPTH _____

DEPTH FEET	FORMATION	SAMPLE NO.	WIDTH OF SAMPLE	GOLD \$	SLUDGE GOLD \$
0-66	Casing - Sand and boulders.				
66-87	Volcanic fragmented & tuff andesitic porphyritic. Strong alteration consisting of bleaching and red splatters.				
87-128	andesitic breccias, porphyritic, not much alteration.				
128-228	Diabase - 154.8 - 1/2 inch calcite with large crystal of galena.				
228-237	massive volcanics, completely altered to brick red.				
237-289	Massive volcanics - porphyritic with some fragments, some red alteration and epidote stringers.				
289-301	283-284 relatively strong alteration Tuff! - green, chloritic, quite soft. A little quartz and sulfide in the last inch.				

N.M.P., TORONTO-STOCK FORM NO. 801 REV. 12/64

DRILLED BY BARRON D.D. LTD

SIGNED

R. H. H. H.
R. H. H. H.

DIAMOND DRILL RECORD

PROPERTY RONDA - BADEN TWP. HOLE NO. 9

SHEET NUMBER 2 (of 2) SECTION FROM _____ TO _____ STARTED _____
LATITUDE _____ DATUM _____ COMPLETED _____
DEPARTURE _____ BEARING _____ ULTIMATE DEPTH _____
ELEVATION _____ DIP _____ PROPOSED DEPTH _____

DEPTH FEET	FORMATION	SAMPLE NO.	WIDTH OF SAMPLE	GOLD \$	SLUDGE GOLD \$
	SAMPLES - CORE				
228-233		8301	5.0	0.01	
233-237		8302	4.0	0.005	
300.5-301		8304	0.5	0.28	
	SLUDGES				
120-130			10.0	TR.	
220-230			10.0	TR.	
230-240			10.0	0.01	
240-250			10.0	TR.	

N.M.P., TORONTO-STOCK FORM NO. 501 REV. 12/89

DRILLED BY _____

SIGNED R. Hallett

DIAMOND DRILL RECORD

PROPERTY RONDA - BADEN TWP.

HOLE NO. 10

SHEET NUMBER 1. (of 2)

CLAIM 341780.

SECTION FROM _____ TO _____

STARTED MARCH 2-1974.

LATITUDE LINE 8 E,

DATUM _____

COMPLETED MARCH 6-1974.

DEPARTURE 50' S of Baseline

BEARING N 320°

ULTIMATE DEPTH 200 ±

ELEVATION _____

DIP -47 1/2

PROPOSED DEPTH _____

DEPTH FEET	FORMATION	SAMPLE NO.	WIDTH OF SAMPLE	GOLD \$	SLUDGE GOLD \$
0-92	CASING - SAND & Boulders				
92-114	DIABASE - altered, red spots and epidote stringers Some sections bleached. Last 3 feet massive & fine grained Sharp contact with next red. Open fracture at 95				
114-120	VOLCANICS - fragmented & buff, andesitic, porphyritic, highly altered to bright red & green - some bleached sections. at 114.5, a one inch seam at 45° filled with actinolite-tremolite & calcite followed by 4 inches brilliant red. alteration & quartz - no visible mineral				
120-200	Volcanics as above but less altered not much alteration except as follows: 128-131 - strong bleaching 145.5-146.5 - altered to pink with green epidote stringers & quartz stringers.				

DIAMOND DRILL RECORD

PROPERTY RONDA - BADEW TWP.

HOLE NO. 10

SHEET NUMBER 2 (of 2)

SECTION FROM _____ TO _____

STARTED _____

LATITUDE _____

DATUM _____

COMPLETED _____

DEPARTURE _____

BEARING _____

ULTIMATE DEPTH _____

ELEVATION _____

DIP _____

PROPOSED DEPTH _____

DEPTH FEET	FORMATION	SAMPLE NO.	WIDTH OF SAMPLE	GOLD \$	SLUDGE GOLD ?
	164.5 - vesicled with epidote				
	165.5 - quartz lens, maximum 3/4 inch with chalcopyrite or epidote				
	<u>Samples</u>				
115-115.3	altered volcanics - 1 inch quartz	8303	0.3	TR.	
140.5-141	alteration with chalcopyrite	8307	0.5	TR.	
145.9-146.2	quartz	8306	0.3	0.04	
146.2-146.5		8305	0.3	0.02	

N.M.P., TORONTO - STOCK FORM NO. 501 REV. 12/51

DRILLED BY _____

SIGNED R. A. Haler

DIAMOND DRILL RECORD

PROPERTY RONDA-BADEN TWP. HOLE NO. 11

SHEET NUMBER 1 (of 2) CLAIM 341777 SECTION FROM _____ TO _____ STARTED March 11, 1974
 LATITUDE LINE 12 E; DATUM _____ COMPLETED March 14, 1974
 DEPARTURE 150' S of BASELINE BEARING 320° ULTIMATE DEPTH 304
 ELEVATION _____ DIP -46° PROPOSED DEPTH _____

DEPTH FEET	FORMATION	SAMPLE NO.	WIDTH OF SAMPLE	GOLD \$	SLUDGE GOLD \$
0-66	Casing - sand and boulders				
66-91	Diorite, rather fine grained.				
	84-87 - numerous epidote stringers				
	88' - epidote, quartz, actinolite	8309	0.3	TR.	
91-151	Diorite - medium grained.				
	146-147 - red alteration.				
151-162.4	Diorite - fine grained.				
162.4-170	Massive Tuff, orthopyroxene in places				
	Broken red alteration.				
170-172	Quartz - milky - fractured - epidote in veins, very little				
	Sulphide mineralization	8310	2.0	0.03	
172-175	Volcanics as above - red alteration				
	strongly fractured - epidote veins	8311	3.0	0.025	
175-187	same - but less altered				
	180-180.2 - a little quartz	8312	0.2	0.01	
187-189	60 percent quartz - very little mineral - looks like tremolite	8313	2.0	0.155	
189-192.5	Volcanics - somewhat altered (Tuff).				

N.M.P., TORONTO-STOCK FORM NO. 501 REV. 12/51

DRILLED BY BARRON DD LTD

SIGNED R. Stahl

DIAMOND DRILL RECORD

PROPERTY RONDA - BADEN TWP. HOLE NO. 11

SHEET NUMBER 2 of 2 SECTION FROM _____ TO _____ STARTED _____
 LATITUDE _____ DATUM _____ COMPLETED _____
 DEPARTURE _____ BEARING _____ ULTIMATE DEPTH _____
 ELEVATION _____ DIP _____ PROPOSED DEPTH _____

DEPTH FEET	FORMATION	SAMPLE NO.	WIDTH OF SAMPLE	GOLD \$	SLUDGE GOLD \$
142.5-304	Agglomerates, very numerous darker grey fragments in lighter groundmass changing to lighter fragments up to 2" in darker groundmass.				
282-283		8314	1.0	0.015	

N.M.P., TORONTO-STOCK FORM NO. 501 REV. 12/51

DRILLED BY _____ SIGNED R. J. Hall

DIAMOND DRILL RECORD

PROPERTY RONPA - BARENTWP. HOLE NO. 13
 SHEET NUMBER 1. (of 1). CLAIM 341777.
 SECTION FROM _____ TO _____ STARTED March 21, 1974
 LATITUDE LINE 16 E, DATUM _____ COMPLETED March 25, 1974.
 DEPARTURE 200 FT SOUTH of BASE BEARING 320°. ULTIMATE DEPTH 377.
 ELEVATION _____ DIP -47°. PROPOSED DEPTH _____

DEPTH FEET	FORMATION	SAMPLE NO.	WIDTH OF SAMPLE	GOLD %	SLUDGE GOLD %
0-80	Casing, Sand and boulders.				
80-95	Tuff and Breccia - Core cut 84 crossed twice at 90 - March 23 + 25				
95-114	87-88 - red alteration + leaching syenite porphyry - massive.				
114-136.2	grey tuff. - Bre from 177-133 brilliant red + green alteration				
	130-130.5 - quartz	8319	0.5	0.04	
	136.0 - 136.2 - quartz	8320	0.2	0.07	
136.2-219	Diorase				
219-255	Agglomerate - porphyritic ground mass very little alteration or quartz stringers				
	228-226 - slightly mineralized	8321	0.0	NIL	
	242-242.3 - quartz	8322	0.3	0.01	
	242.3-245 - slight mineralization	8323	2.7	NIL	
	245. - 250 - " " "	8324	5.0	NIL	
255-377	Tuff and Breccia - grey porphyritic groundmass with small white phenocrysts				
	299.5-301.5 - qtz - white, some pyrite	8325	2.0	NIL	

N.M.P. TORONTO-STOCK FORM NO. 301 REV. 12/51

DRILLED BY BARRON D.D LTD

SIGNED

R. H. H. H.