



42A02SW0027 10 BADEN

010

Diamond Drilling

Township of Baden

Report No: 10

Work performed by: Ronda Copper Mines Ltd.

Claim No	Hole No	Footage	Date	Note
L 373467	1	259.5'	Aug/73	(1)
	2	190'	Aug/73	(1)
	6	173'	Oct/73	(1)
	7	239'	Oct/73	(1)
L 21186	3	221'	Aug/73	(1)
	4	205'	Sept/73	(1)
	5	59'	Sept/73	(1)
L 341779	8	277.5'	Oct/73	(1)

Notes:

(1) 256/73

Autopositive Enclosed

DIAMOND DRILL RECORD

PROPERTY RONDA, BADEN TWP. HOLE NO. - ALL LOCATIONS

SHEET NUMBER _____ SECTION FROM _____ TO _____ STARTED FROM MAIN GRID
 LATITUDE _____ DATUM _____ COMPLETED OCT. 20/73
 DEPARTURE _____ BEARING _____ ULTIMATE DEPTH _____
 ELEVATION _____ DIP _____ PROPOSED DEPTH _____

DEPTH	FORMATION		DIP	DIRECTION	CORRECTION	DEPTH
HOLE No.	LATITUDE	DEPARTURE	DEPTH	DIP	DIRECT	DEPTH
①	240-NORTH	386-WEST	45°	S.E.	190	259½
②	" "	" "	35°	S.E.	274	190
③	12 "	00 "	45°	N.W.	225	221
④	00 "	245-WEST	45°	N.W.		205
⑤	" "	" "	60°	N.W.		59
⑥	162-N	472-W	45°	S.E.		173
⑦	148-N	570-W	45°	S.E.		239
⑧	14-SOUTH	38-EAST	45°	N.		277½
HOLLINGER	25-N	25-E	45°	N.W.		
TOTAL:						1624.0

MICHAEL CADYEN

Report # 256-73
 Baden Twp
 Ronda Copper Mines Ltd

DIAMOND DRILL RECORD

PROPERTY RONDA - BADEN TWP

HOLE NO. 1-73

SHEET NUMBER 1 OF 3

SECTION FROM 0 TO 240

STARTED AUG 22 1973

LATITUDE 130 FT. N.W. OF

DATUM _____

COMPLETED AUG 1973

DEPARTURE MAIN PIT

BEARING 137° Magnetic (S43E)

ULTIMATE DEPTH 257.5

ELEVATION _____

DIP 45

PROPOSED DEPTH _____

DEPTH FEET	FORMATION	SAMPLE NO	WIDTH OF SAMPLE	GOLD \$ (Z/TON)	SLUDGE GOLD \$
0-6	CASING				
6-40.5	VOLCANIC BRECCIA - LIGHT GREY. SOME FELDSPAR PHENOCRYSTS TO 1/8" VAGUE BANDING 17-18" NUMEROUS QUARTZ STRINGERS TO 1/8" 26-30.	76	4.0	0.005	
40.5-47.5	LIGHT GREY, MASSIVE, FINE GRAIN, DYKE?)				
47.5-120.6	VOLCANIC BRECCIA AS ABOVE				
120.6-122.0	FINE GRAIN, LIGHT GREY, MASSIVE				
122.0-136.8	BRECCIA AS ABOVE				
136.8-137.8	FINE GRAIN, GREY, MASSIVE				
137.3-158.0	BRECCIA, BECOMING INCREASINGLY PORPHYRITIC AND DARKER.				
158-227	MASSIVE, HARD, FINE GRAIN, PORPHYRITIC IN PLACES - (DACITE?) 160-167 - SOME RED ALTERATION + EPIDOTE STRINGERS 175-180 - HIGHLY ALTERED & BLEBBED 184 - VEINLET WITH CHALCOPYRITE				
227-240	MASSIVE, RED, FINE GRAINED, NUMEROUS EPIDOTE STRINGERS - VERY LITTLE FINE SUBSIDES				

DIAMOND DRILL RECORD

PROPERTY RONDA - BADEN TWP HOLE NO. 1-73
 SHEET NUMBER 2 OF 3 SECTION FROM 240 TO 259.5 STARTED AUG 1973
 LATITUDE _____ DATUM _____ COMPLETED AUG 1973
 DEPARTURE _____ BEARING _____ ULTIMATE DEPTH ~~190~~ -
 ELEVATION _____ DIP _____ PROPOSED DEPTH _____

DEPTH FEET	FORMATION	SAMPLE NO.	WIDTH OF SAMPLE	GOLD \$	SLUDGE GOLD \$
240-241.3	QUARTZ - WHITE, NUMEROUS FRACTURES WITH EPIDOTE - PYRITE IN SMALL GRAINS & CLUSTERS UP TO 1/10 INCH. TOTAL SULPHIDE CONTENT LESS THAN ONE PERCENT.			0.2/ton	
		236.5-240.	95	3.5	0.01
		240 - 241.1	96	1.1	0.13
241.3-251.5	MASSIVE, FINE GRAINED, DEEP RED HIGHLY FRACTURED, VERY MINOR SULPHIDE CONTENT. SOME QUARTZ AT 249.				
251.5-253.8	QUARTZ - GREY-MILKY - FRACTURES WITH EPIDOTE MINOR SULPHIDE EVEN LESS THAN 240-241.				
		241.1 - 245.0	97	3.9	0.04
		245.0 - 251.2	98	6.2	0.015
		251.2 - 254.0	99	2.8	0.165
253.8-259.5	DIABASE, DARK - MASSIVE - FINE GRAINED - UNALTERED.				

DIAMOND DRILL RECORD

PROPERTY RONDA - BADEN

HOLE NO. 1-73

SHEET NUMBER 3 OF 3 SECTION FROM _____ TO _____ STARTED _____

LATITUDE _____ DATUM _____ COMPLETED _____

DEPARTURE _____ BEARING _____ ULTIMATE DEPTH _____

ELEVATION _____ DIP _____ PROPOSED DEPTH _____

DEPTH FEET	FORMATION	SAMPLE NO.	WIDTH OF SAMPLE	GOLD †	SLUDGE GOLD ‡		
<i>ADDITIONAL SAMPLES: -</i>							
	162.5-165.0.	77.	2.5	0.005			
	165-170	78	5.0	0.005			
	170-175	79	5.0	NIL			
	175-180.	80	5.0	NIL			
	180-185	81	5.0	NIL			
	185-190.	82	5.0	NIL			
	190-195.	83	5.0	NIL			
	195-200.	84	5.0	NIL			
	200-205	85	5.0	NIL			
	205-210.	86	5.0	NIL			
	210-215.	87	5.0	NIL			
	215-220.	88	5.0	NIL			
	220-225	89	5.0	NIL			
	225-230.	90	5.0	0.005			
	230-235	91	5.0	0.005			

DIAMOND DRILL RECORD

PROPERTY RONDA - BADEW TWP.

HOLE NO. 2

SHEET NUMBER 1 OF 2

SECTION FROM _____ TO _____

STARTED Aug 29 1973.

LATITUDE SAME LOCATION

DATUM _____

COMPLETED _____

DEPARTURE AS DH 1.

BEARING S 43E MAG (137)

ULTIMATE DEPTH ~~175~~ 190

ELEVATION _____

DIP 35

PROPOSED DEPTH _____

DEPTH FEET	FORMATION	SAMPLE NO.	WIDTH OF SAMPLE	GOLD g	SLUDGE GOLD g
0-8	CASING.				
8-26.4	VOLCANIC BRECCIA, LIGHT GREY				
26.4-77.3	MASSIVE FINE GRAINED, LIGHT GREY. CHLORITIC PHENOCRYSTS IN PLACES				
77.3-81.5	BRECCIA - PORPHYRITIC.				
81.5-83.8	FINE GRAIN AS ABOVE				
83.8-131.	VOLCANIC BRECCIA. GREY, PORPHYRITIC. (FELDSPAR PHENOCRYSTS UP TO 1/8 INCH)				
131-152	MASSIVE GREY, FINE GRAINED, HARD. 131.5- QUARTZ STRINGER WITH EPIDOTE				
	142-143. ALTERED WITH QUARTZ STRINGERS AND EPIDOTE				
152-170.	SAME WITH INCREASING ALTERATION.				
170-180.	INTENSE RED ALTERATION				
180-183.	QUARTZ. GREYISH. WELL FRACTURED. STRINGERS WITH EPIDOTE - SOME FRAGMENTS RED ROCK - SULPHIDES (PYRITE. + CHALCO) IN SMALL GRAINS + CLUSTERS - TOTAL SULPHIDES LESS THAN 1%.				

DIAMOND DRILL RECORD

PROPERTY RONDA - BADEN TWP. HOLE NO. 2-73

SHEET NUMBER 2 OF 2 SECTION FROM _____ TO _____ STARTED _____
 LATITUDE _____ DATUM _____ COMPLETED _____
 DEPARTURE _____ BEARING _____ ULTIMATE DEPTH _____
 ELEVATION _____ DIP _____ PROPOSED DEPTH _____

DEPTH FEET	FORMATION	SAMPLE NO.	WIDTH OF SAMPLE	GOLD \times	SLUDGE GOLD $\%$			
183-190	DIABASE							
	<u>SAMPLES-</u>							
	140-143.	104	3.0	TR				
	150-155	103	5.0	NIL				
	155-160	102	5.0	TR				
	160-165.	101	5.0	TR				
	165-170.	100	5.0	TR				
	170.-175	94	5.0	0.015				
	175-180.	92	5.0	0.02				
	180-183	93	3.0	0.475				

DIAMOND DRILL RECORD

PROPERTY RONDA - BADEN TWP HOLE NO. 3-73

SHEET NUMBER 1 OF 2 SECTION FROM _____ TO _____ STARTED _____
 LATITUDE Approx 450' due DATUM _____ COMPLETED SEPT 7, 1973
 DEPARTURE east of Hole 1- BEARING N130W (MAG) ULTIMATE DEPTH _____
 ELEVATION _____ DIP 45° PROPOSED DEPTH 220

DEPTH FEET	FORMATION	SAMPLE NO.	WIDTH OF SAMPLE	GOLD g	SLUDGE GOLD g
0-9	CASING				
9-20	MASSIVE GREY TO REDDISH FINE GRAINED WITH CLOSELY SPACED STRINGERS OF QUARTZ AND A FIBROUS MINERAL (TREMOLITE?)				
20-42	SAME WITH INCREASING RED ALTERATION.				
42-50	DIABASE - FINE GRAIN, GREY, NOT ALTERED CONTACT WITH PREVIOUS ROCK NOT CLEAR CUT EXCEPT RED ALTERATION SUDDENLY STOPS				
50-141.8	DIABASE - MEDIUM GRAIN - DARK GREY 73-81 - PROMINENT RED ALTERATION WITH QUARTZ & EPIDOTE 74-75 120-125 - SOME EPIDOTE STRINGERS DIABASE FINE GRAIN FROM 125				
141.8-144.5	124.8 - 1" QUARTZ WITH FIBROUS MINERAL MASSIVE, FINE GRAIN, STRONG RED ALTERATION, SOME QUARTZ STRINGERS				
144.5-145.0	SAME WITH TWO LARGER QUARTZ VEINLETS (1/2" DIA)				
145.0-160.6	MASSIVE, FINE GRAIN, SOME RED ALTERATION				

DIAMOND DRILL RECORD

PROPERTY RONDA - BADEN TWP

HOLE NO. 4.

SHEET NUMBER 1 OF 2

SECTION FROM 0 TO 1430

STARTED SEP 7 20

LATITUDE 245' 3" (AST)

DATUM 330 MAG.

COMPLETED _____

DEPARTURE from #1-81186.

BEARING 320 AST.

ULTIMATE DEPTH 205.

ELEVATION _____

DIP 45°

PROPOSED DEPTH _____

DEPTH FEET	FORMATION	SAMPLE NO.	WIDTH OF SAMPLE	GOLD g	SLUDGE GOLD g
0-11.7	CASING				
11.7-13.5	GREY PORPHYRITIC - WHITE PHENO CRYSTALS UP TO 1/16 INCH				
13.5-25.6	- STRONGLY ALTERED - RED - STRINGERS OF QUARTZ & YELLOWISH FIBROUS MINERAL. 23-25 - A LITTLE SULPHIDE IN STRINGER.				
25.6-26.1	QUARTZ - GREY - SOME RED STREAKS. A LITTLE DISSEMINATED FINE SULPHIDE.				
26.1-36.7	DIABASE - VERY FINE GRAINED				
36.7-39.0	APHITE(?) - VERY FINE GRAINED, LIGHT PINK - SLIGHTLY PORPHYRITIC, EPIDOTE STRINGERS & FINE DISSEMINATED PYRITE 4 INCHES BRIGHT RED AT BEGINNING.				
39.0-117	DIABASE - NORMAL MEDIUM GRAIN SOME RED ALTERATION OF FELDSPARS				
117-132.0	DIABASE - FINER GRAINED.				
132.0-132.2	SHARP CONTACT TO BRIGHT RED ROCK MOSTLY GREY QUARTZ				
132.6-143.0	MASSIVE FINE GRAIN, BRIGHT RED - PORPHYRITIC - EPIDOTE STRINGERS MINOR SULPHIDES				

DIAMOND DRILL RECORD

PROPERTY RONDA - BADENTWP HOLE NO. 3-73

SHEET NUMBER 2 OF 2 SECTION FROM _____ TO _____ STARTED _____
 LATITUDE _____ DATUM _____ COMPLETED _____
 DEPARTURE _____ BEARING _____ ULTIMATE DEPTH _____
 ELEVATION _____ DIP _____ PROPOSED DEPTH _____

DEPTH FEET	FORMATION	SAMPLE NO.	WIDTH OF SAMPLE	GOLD %	SLUDGE GOLD %
160.6-166.0	MASSIVE - FINE GRAINED - STRONG RED ALTERATION + EPIDOTE STRINGERS				
166.0-180	MASSIVE - DARK GREY TO REDDISH A FEW EPIDOTE STRINGERS				
180-181	STRONG RED ALTERATION - SULPHIDE STRINGERS				
181-189.5	BRECCIATED - MUCH EPIDOTE + RED ALTERATION				
189.5-220	BRECCIA OF GREY PORPHYRY FRAGMENTS IN LIGHTER GROUND MASS				
SAMPLES -					
32.5-35.0	RED-ALTERED - SOME QUARTZ STRINGERS	105	2.5	0.01	
35.0-40.0	RED ALTERED	106	5.0	0.01	
142-144.5	STRONG RED ALTERATION - SOME QUARTZ STRINGERS	107	2.5	0.015	
144.5-145	STRONG RED ALTERATION - 2 QUARTZ STRINGERS	108	0.5	0.06	
160-169	STRONG RED ALTERATION	109	7.0	0.01	

DIAMOND DRILL RECORD

PROPERTY RONDA - BADEN

HOLE NO. 5

SHEET NUMBER 1 OF 1

SECTION FROM _____ TO _____

STARTED _____

LATITUDE SAME AS NO4

DATUM _____

COMPLETED OCT 2, 1973

DEPARTURE _____

BEARING 320 AST

ULTIMATE DEPTH _____

ELEVATION _____

DIP 60°

PROPOSED DEPTH _____

DEPTH FEET	FORMATION	SAMPLE NO.	WIDTH OF SAMPLE	GOLD g	SLUDGE GOLD g
0-15	CASING				
15-18	TUFF - DARK GREY - OCCASIONAL STRINGS OF QTZ AND EPIDOTE				
18-19.4	MOSTLY QUARTZ AND EPIDOTE				
19.4-33.0	INCREASING RED ALTERATION BECOMING BRIGHT RED AT 30				
33.0-37.3	MOSTLY QUARTZ	18	1.0	0.265	
37.3-59.0	DIABASE - FINE GRAIN				
	SAMPLES -				
	34.7-35.7 - QUARTZ	19	1.0	0.265	

DIAMOND DRILL RECORD

PROPERTY RONDA - BADEN TWP.

HOLE NO. 4.

SHEET NUMBER 2 OF 2.

SECTION FROM 143 TO 205

STARTED _____

LATITUDE _____

DATUM _____

COMPLETED _____

DEPARTURE _____

BEARING _____

ULTIMATE DEPTH _____

ELEVATION _____

DIP _____

PROPOSED DEPTH _____

DEPTH FEET	FORMATION	SAMPLE NO.	WIDTH OF SAMPLE	GOLD <input checked="" type="checkbox"/>	SLUDGE GOLD <input type="checkbox"/>
143-157.	MASSIVE TUFF? - VERY FINE GRAIN - UNALTERED - SOME BLACK PYROCLASTS. POSSIBLE DYKE.				
157-162	VOLCANIC BRECCIA.				
162-205	TUFF + BRECCIA.				
	179.1-179.2 - QUARTZ STRINGER WITH PYRITE				
	192.0 - QUARTZ STRINGER				
	196.3 - " "				
	SAMPLES.				
	25.6-26.0 QTZ	10	0.5	0.085	
	37-39	11	2.0	0.025	
	23.5-25.5	12	2.0	0.005	
	132.0-137.2-QTZ	13	0.2	0.75	-
	132.2-135.2	14	3.0	0.01	
	135.2-138.2	15	3.2	TR	
	138.2-143	16	4.8	0.005	
	150-151	17	1.0	TR	
	179-179.5	18	0.5	0.055	

DIAMOND DRILL RECORD

PROPERTY RONDA COPPER MINES, BADEN TOWN HOLE NO. 6

SHEET NUMBER 1 OF 2 SECTION FROM _____ TO _____ STARTED OCT. 4, 1973
 LATITUDE 162 NORTH DATUM NEW GRID COMPLETED OCT. 9
 DEPARTURE 472 WEST BEARING 137° MAGNETIC ULTIMATE DEPTH 173 FEET
 ELEVATION POND + 15' DIP 45° PROPOSED DEPTH _____

DEPTH FEET	FORMATION	SAMPLE NO.	WIDTH OF SAMPLE	GOLD g	SLUDGE GOLD g
0 - 8	CASING				
8 - 89	VOLCANIC BRECCIA, LIGHT GREY TO GREENISH, VERY FINE GRAIN, LIKE SALT. NUMEROUS QUARTZ STRINGERS & THREADS (ABOUT 12 PER FOOT) 65-66; VAGUE PINK 67-68; Aphanitic DARK GREY MAFIC DYKE @ 45° WITH SHARP, UNCHILLED CONTACTS.				
89 - 90.5	REDISH BLACK V.F. GRAIN.				
90.5 - 91.5	50% QUARTZ IN STOCKWORK	20	1.0	0.03	
91.5 - 92.0	GRIND CORE				
92.0 - 94.0	80% QUARTZ, 5% EPIDOTE	21	2.0	0.015	
94.0 - 96.0	40% QUARTZ, TR. PYRITE, GREY-RED, V.F. GRAIN	22	2.0	0.015	
96.0 - 97.5	30% QUARTZ, 20% EPIDOTE, 1% CHALCO.	23	1.5	0.01	
97.5 - 99.0	50% QUARTZ IN GREY ROCK, TR. PY.	24	1.5	0.01	
99.0 - 101.2	WHITE QUARTZ VEIN (V.L.M.) / SPIN CHALCO	25	2.2	0.29	*
101.2 - 105.0	BRICK RED WITH MULTIPLE BLACK SLIPS AT LOW ANGLES TO CORE	26	3.8	0.015	
105 - 110	DARK GREY, FREQUENT SLIPS	4961	5.0	0.01	
110 - 114	GREY & RED BRECCIA, VERY FINE GRAIN	4962	SEE PAGE ②		
114 - 159.6	BRICK RED, V.F.G., WITH GREY SECTIONS BETWEEN 140 & 150				

DIAMOND DRILL RECORD

PROPERTY RONDA - BADEN TWP HOLE NO. 6

SHEET NUMBER 2 OF 2 SECTION FROM _____ TO _____ STARTED _____
 LATITUDE _____ DATUM _____ COMPLETED _____
 DEPARTURE _____ BEARING _____ ULTIMATE DEPTH _____
 ELEVATION _____ DIP _____ PROPOSED DEPTH _____

DEPTH FEET	FORMATION	SAMPLE No.	WIDTH OF SAMPLE	GOLD g	SLUDGE GOLD g
159.6-160.6	QUARTZ VEIN	4952	1.0	0.02	
160.6-173	FINE GRAIN DIABASE @ 45°				
173	END OF HOLE				
85.0-90.5	VARIOUS COLOURED (ALTERATION)	4960	5.0	0.005	
110-115	MOSTLY GREY RED BRECCIA	4962	5.0	TRACE	
115-120	BRICK RED	4963	5.0	0.01	
120-125	" "	4964	5.0	0.01	
125-130	" "	4965	5.0	0.01	
130-135	" "	4966	5.0	0.04	
135-136	" " PLUS 1/2 FOOT QTR STIPPLES	4951	1.0	0.05	
136-140	" "	4967	4.0	0.025	
140-145	GREY MOSTLY, SOME RED	4968	5.0	0.015	
145-150	GREY " " "	4969	5.0	0.01	
150-155	BRICK RED	4970	5.0	0.01	
155.0-159.6	" "	4971	4.6	0.01	
159.6-160.6	QUARTZ VEIN (AS ABOVE)	4952	1.0	0.02	

DIAMOND DRILL RECORD

PROPERTY POND COPPER MINES LTD - BARRIN TWP.

HOLE NO. 7

SHEET NUMBER 1 OF 2

SECTION FROM _____ TO _____

STARTED OCT. 12, 1973

LATITUDE 148 NORTH

DATUM NEW LINE GRID

COMPLETED OCT. 17

DEPARTURE 576 WEST

BEARING 137° MAGNETIC

ULTIMATE DEPTH _____

ELEVATION POND + 10 FEET

DIP 45°

PROPOSED DEPTH _____

DEPTH FEET	FORMATION	SAMPLE NO.	WIDTH OF SAMPLE	GOLD %	SLURGE GOLD %
0 - 8	CASING				
8 - 115	RED SYENITE PORPHYRY, 20% PINK FELDS PAR OF WHICH 1/3 ARE ANULAR, IN PLAGIOCLASE GROUNDMASS FINE GRAIN (ONLY 5-10% MAFIC) FINAL CONTACT GRADATIONAL OVER 1 INCH @ 30° TO CORE				
115 - 187	VOLCANIC BRECCIA, A MIXED BAG OF GREY, GREEN & PINK ROCK FRAGMENTS				
	132-137: 40% QUARTZ IN STOCKWORK	4953	5.0	0.085	
	137-138: 80% " " "	4954	1.0	0.145	
	138-139: 40% " 2% PYRITE	4955	1.0	0.275	
	139-144: BIRCH RED + QZ. STRINGERS	4958	5.0	0.02	
	144-145: 30% QUARTZ WITH SLIPSTEPS	4957	1.0	0.015	
	145-146: 50% QUARTZ IN BANDS IN AREA	4956	1.0	0.135	
187 - 214	DARK RED, SYENITE LINE ROCK, FAIR FINE GRAIN, MADE UP OF 85% FELDSPAR/PLAGIOCLASE & 15% FINE BLACK & GREY MAFICS. 207.5 - 212.5	4949	5.0	0.05	
214 - 239	DIABASE, COARSE SUGAR GRAIN EXCEPT CHILLED FOR 7 FEET IN FROM CLEAR CONTACT @ 45°. CONTACT HAS PIECE OF SYENITE, UNCHILLED.				
239	END OF HOLE				

DIAMOND DRILL RECORD

PROPERTY RONDA - BADEN TWP. HOLE NO. 7

SHEET NUMBER 2 OF 2 SECTION FROM _____ TO _____ STARTED _____
 LATITUDE _____ DATUM _____ COMPLETED _____
 DEPARTURE _____ BEARING _____ ULTIMATE DEPTH _____
 ELEVATION _____ DIP _____ PROPOSED DEPTH _____

DEPTH FEET	FORMATION	SAMPLE NO.	WIDTH OF SAMPLE	GOLD oz.	SLUDGE GOLD				
187-195	DARK RED SYENITE LIKE ROCK	4974	8.0	TR.					
195-200	" " " "	4973	5.0	TR.					
200-207 1/2	" " " "	4972	7.5	TR.					
207 1/2-212 1/2	" " " "	4949	5.0	0.05					
20-21.5		4984	1.5	NIL.					
110-112		4983	2.0	NIL					
125-130		4982	5.0	NIL					
130-132	ALTERATION	4981	2.0	0.02.					

N.M.P. TORONTO-STOCK FORM NO. 801 REV. 12/81

DRILLED BY _____ SIGNED _____

DIAMOND DRILL RECORD

PROPERTY PONDA COPPER MINES LTD. - BADEN TWP.

HOLE NO. 8

SHEET NUMBER 1 OF 2

SECTION FROM _____ TO _____

STARTED OCT. 19, 1973

LATITUDE 14 FT. SOUTH

DATUM NEW LINE GRID

COMPLETED OCT. 25

DEPARTURE 38 FT. EAST

BEARING N 5° WEST MAGNETIC

ULTIMATE DEPTH 277 1/2

ELEVATION POND LEVEL

DIP 45°

PROPOSED DEPTH _____

DEPTH FEET	FORMATION	SAMPLE NO.	WIDTH OF SAMPLE	GOLD g	SLUDGE GOLD g
0-16	CASING				
16-40	VOLCANIC BRECCIA, GREY, FINE GRAIN, MOSTLY ACIDIC MINERALS WITH A LITTLE CHLORITIC MAFIC MINERALS. HAS VARIOUS COLOURED PIECES OF Tuff, DACITE, EYE PORPHYRY ETC. PLUS THE ODD QUARTZ STRINGER AT VARIOUS ANALYS THE FINAL CONTACT IS GRADATIONAL OVER SOME 7 FEET				
40-69.4	SYENITE LIKE ROCK, BROWNISH RED, FINE GRAIN, NUMEROUS EPIDOTE STRINGERS				
	40.0-41.5	4985	1.5	Nil.	
	67.4-69.4	4986	2.0	Nil	
69.4-202.5	DIABASE, MEDIUM GRAIN, MOSTLY MOSTLY GREENISH GREY FELDSPAR AND A LITTLE CHLORITIC MAFIC MINERALS WITH 10% RED FELDSPAR OFTEN WITH WHITE CORN. BOTH CONTACTS CLEAR AT 60°, INITIAL ONE CHILLED FOR 20 FEET + FINAL CONTACT FOR 7 FEET.				
202.5-239.4	VOLCANIC BRECCIA, MIXED FRAGMENTS OF RED, GREEN, + BLACK FINE GRAIN ROCKS LIKE A MOSAIC, ONLY IN FIST SIZE CHUNKS				

DIAMOND DRILL RECORD

PROPERTY PONDA, BADEN TWP.

HOLE NO. 8

SHEET NUMBER 2 OF 2

SECTION FROM _____ TO _____

STARTED OCT. 73

LATITUDE _____

DATUM _____

COMPLETED _____

DEPARTURE _____

BEARING _____

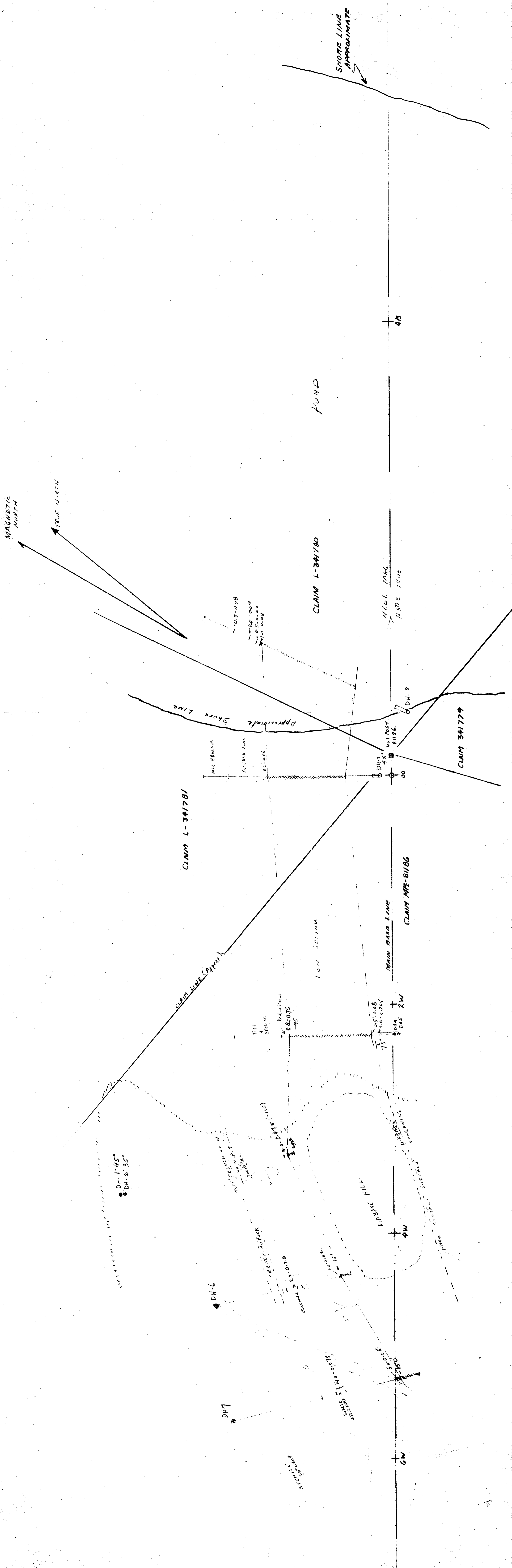
ULTIMATE DEPTH _____

ELEVATION _____

DIP _____

PROPOSED DEPTH _____

DEPTH FEET	FORMATION	SAMPLE NO.	WIDTH OF SAMPLE	GOLD g	SLUDGE GOLD g
202.5-203.0	QUARTZ VEIN (ALL IN SMP.)	4987	0.5	0.08	
203.0-206.4	RED ROCK	4988	3.6	0.02	
206.4-206.9	QUARTZ VEIN	4989	0.5	0.20	
206.9-210.0	WALL ROCK	4990	3.1	0.01	
213-215	TYPICAL COUNTRY ROCK	4991	2.0	0.01	
217-218	NEXT TO VEIN	4992	1.0	0.005	
218.0-218.4	QUARTZ VEIN	4993	0.4	0.07	
218.4-219.4	NEXT TO " "	4994	1.0	0.01	
237.9-239.1	WALL ROCK	4995	1.2	0.005	
239.1-239.4	QTZ WITH CHALCO	4996	0.3	0.08	
239.4-277 1/2	GREY GRANULAR ROCK, FINE SUGAR SIZE GRAN, UNEVEN TEXTURE WITH VARIOUS SHADDS OF PINK & GREEN INITIAL 15 FEET DUSTED WITH FINE WHITE SPOTS.				
239.4-240.4	WALL ROCK	4997	1.0	0.03	
240.4-242.0	VERY RED, STRIPEDS GR	4998	1.6	0.01	
244.0-245.1	WALL ROCK	4999	1.1	0.005	
245.1-245.2	QUARTZ WITH CALCITE	5000	0.1	0.04	
245.2-246.2	WALL ROCK	5001	1.0	NIL	
277 1/2	END OF HOLE				



RONDA COPPER MINES LTD
BADEN TOWNSHIP
PLAN OF DRILLING
1 INCH = 30 FEET

