



42A02SW0028 12 BADEN

010

Diamond Drilling

Township of BADEN

Report NO: 12

Work performed by: Clifford Hames (Manitou Lake Gold Mines)

| Claim NO | Hole NO | Footage | Date | Note | |
|----------|----------|---------|--------|--------|-----|
| L 401358 | 1 | 288' | Mar/76 | (1) | |
| | 2 | 204' | Apr/76 | (2) | |
| | 4 | 227' | Apr/76 | (2) | |
| | 6 | 244' | Apr/76 | (2) | |
| | 7 | 207' | Apr/76 | (3) | |
| | 8 | 157' | Apr/76 | (3) | |
| | 9 | 215' | May/76 | (2) | |
| | L 401115 | 3 | 501' | Apr/76 | (3) |

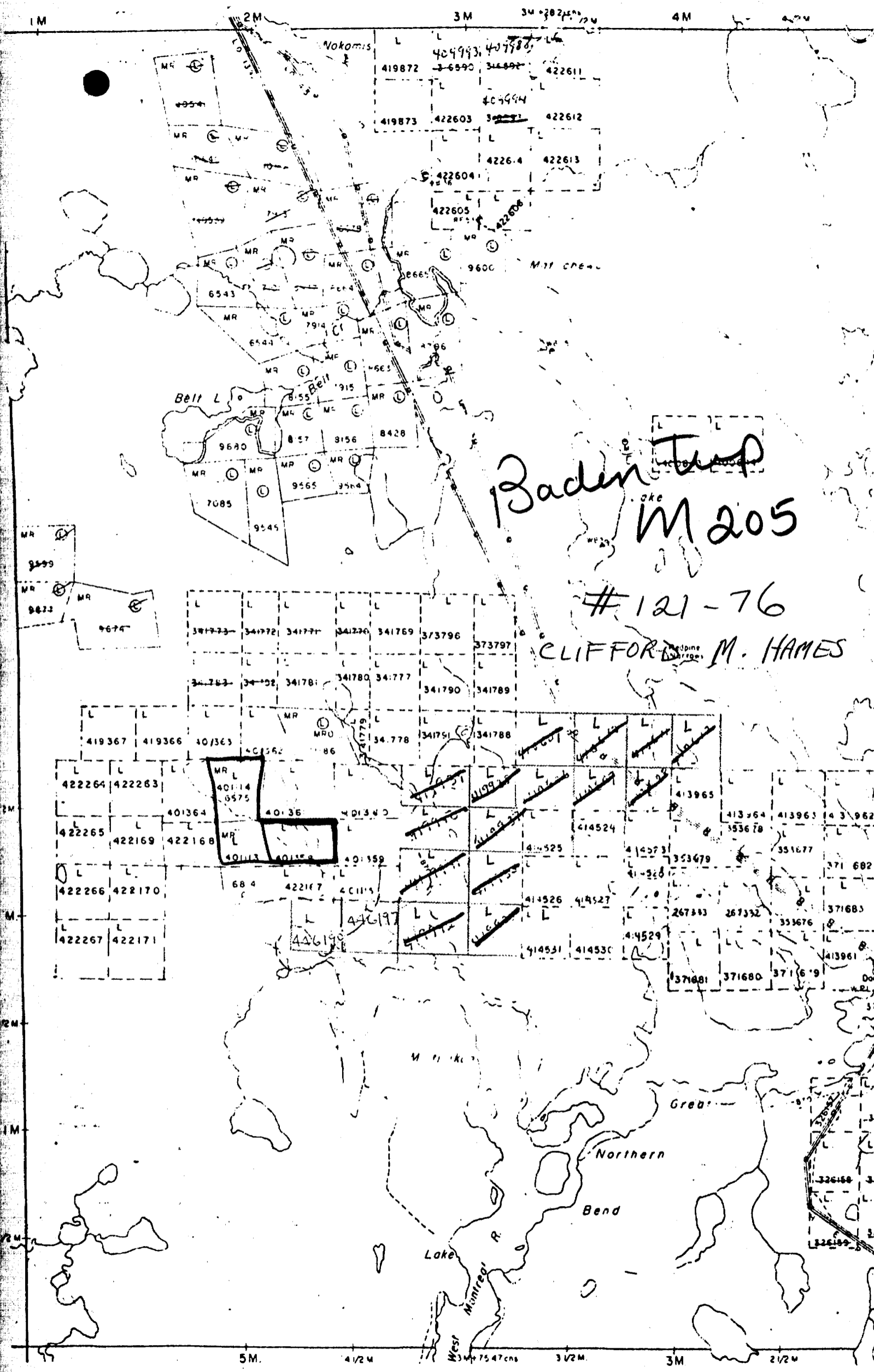
FOR FURTHER INFORMATION CONSULT TECHNICAL SURVEY FILE #63.3327.

Notes:

(1) #121-76

(2) #145-76

(3) #148-76



Baden Twp
M 205
121-76
CLIFFORD M. HAMES

MANITOU LAKE GOLD MINES INC.

BADEN TOWNSHIP, LARDER LAKE MINING DIVISION, ONT.

DIAMOND DRILL HOLE NO 1.

CLAIM 401358. - 800 FT WEST AND 275 FT NORTH
OF NO 2 POST.

BEARING - N 65° E ASTRONOMIC.

DIP 45° - LENGTH - 288 FEET.

STARTED: MARCH 28, 1976. FINISHED MARCH 31, 1976

DRILLER: R. M. FERGUSON, MATACHEWAN.

LOGGED BY: R. A. MALET

0-6 : CASING. - WATER AND BOULDERS.

6-101.4. MASSIVE FINE GRAINED PINK SYENITE OR APLITE
WITH NUMEROUS BANDS OF MASSIVE GREY GREEN TUFF.
ABOUT ONE THIRD OF THE CORE IS TUFF IN BANDS
RANGING FROM ONE INCH TO SEVEN FEET.

6-10.6. TUFF

14.2-14.7. QUARTZ.

18.2-19.5. QUARTZ STRINGERS

49.1-49.4. QUARTZ

49.5-55.0 - TUFF.

58.7-60.5 QUARTZ

68.4-74.0 TUFF

79.6-83.6 TUFF

101.4-281.8 - SYENITE PORPHYRY - MASSIVE, FINE GRAINED
DARK GREY GROUND MASS WITH NUMEROUS SMALL
FELDSPAR PHENOCRYSTS - BRECCIATED IN PLACES
R. BY QUARTZ SEAMS AT 102.6-103.5-122.5-128.

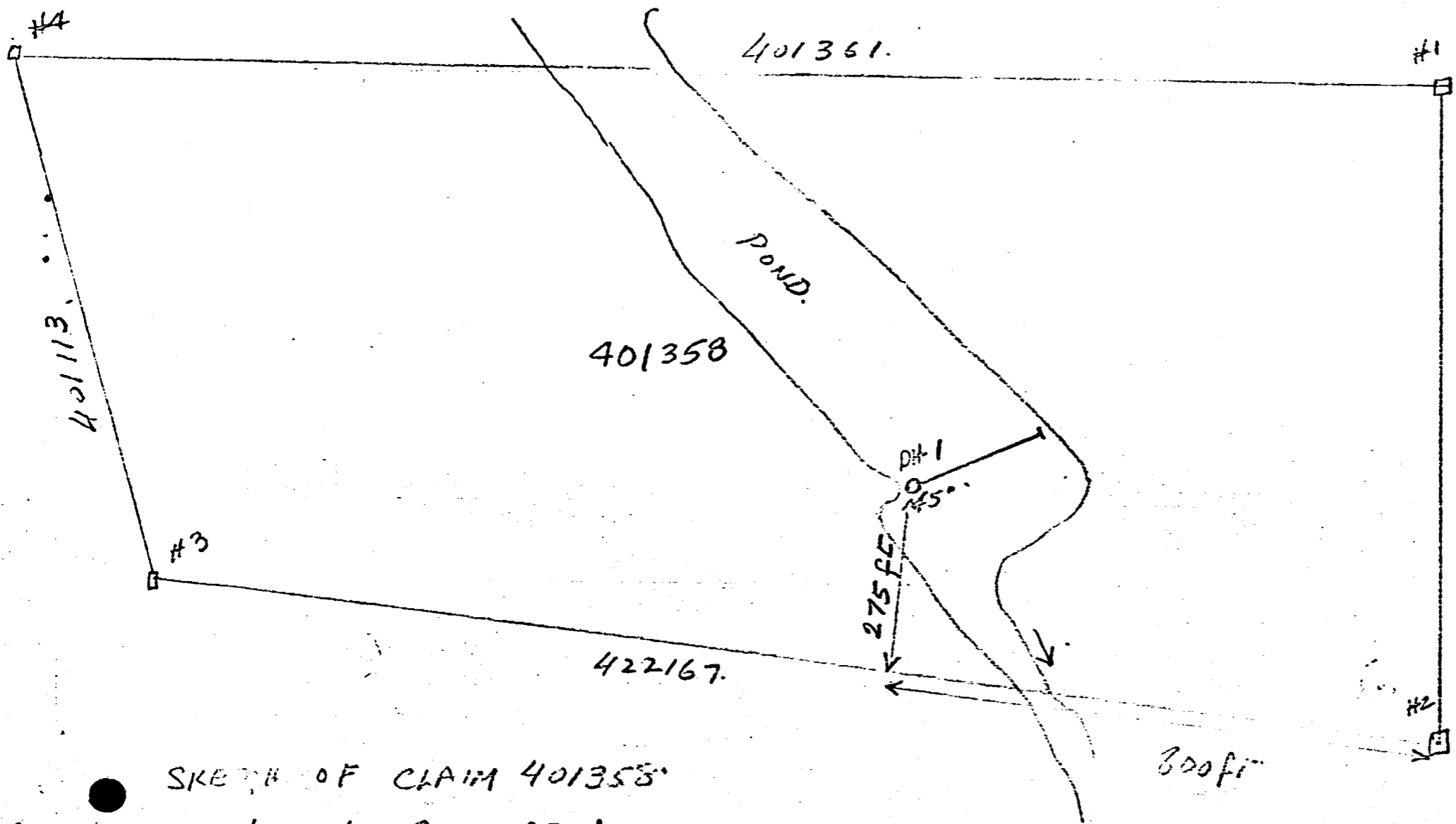
124.8-131.3 - MASSIVE TUFF AND RHYOLITE

216.2-217.3. FINE GRAINED BASIC DYKE

281.8-288 - BANDED TUFF. BUNCHES OF PYRITE GRAINS
AT 282.8-283.7-284.5-285.1-287.

END OF HOLE 288

R. A. Malet



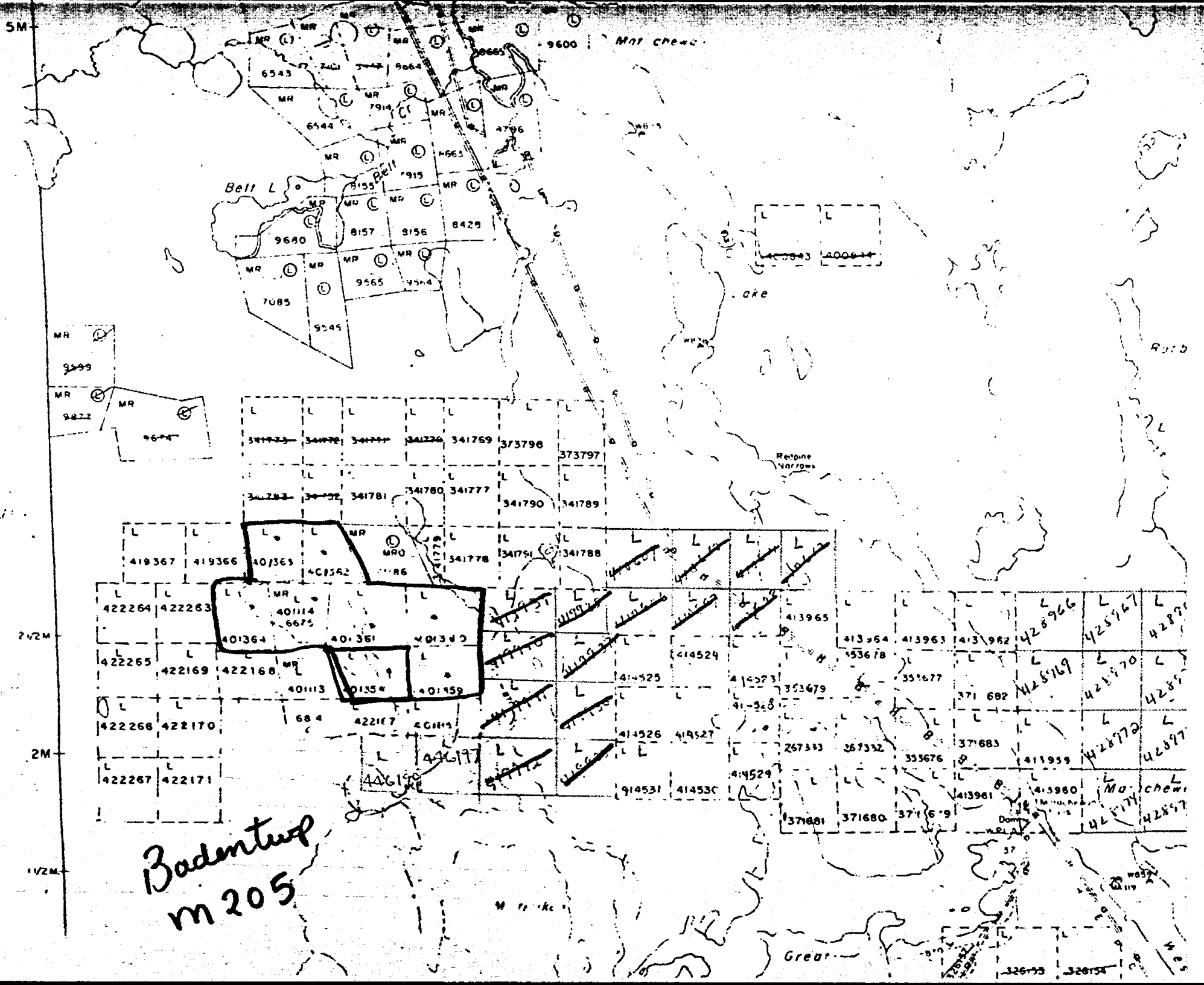
SKETCH OF CLAIM 401358
 1 INCH = 200 FEET

Rattler

145-76

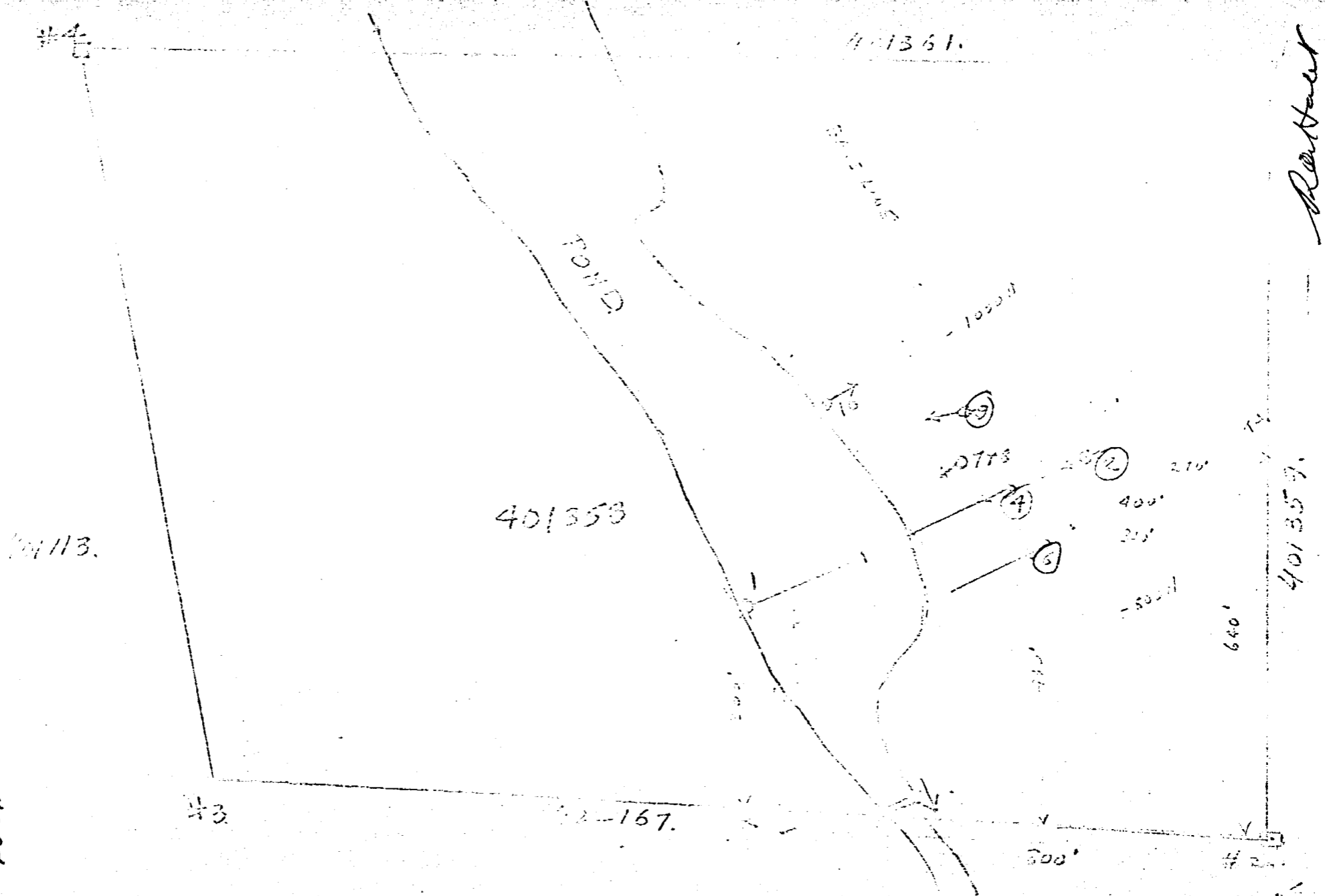
Baden Twp.
CLIFFORD M. HAMES

Argyle Twp. M. 203



Baden Twp
m 205

MANTON LAKE GOLD MINED IN
BAVEN TOWNSHIP
LOCATION OF DRILL HOLES 2, 4, 6, 9.



BOUNDARY OF CLAIM 401358
1 INCH = 200 FEET

Robert

D.H. 2 (733)

SPIDER TOWNSHIP, LINCOLN COUNTY MINING DIVISION.
 DIAMOND DRILL HOLES NO. 2 (733).
 S.M. 401358 - 640 FT NORTH THE 270' FT. WEST.
 OF NO. 2 POST - (522 FT. AT N. 65 E FROM DH 1).
 BEARING - 245° ASTRONOMIC.
 DIP - 45°. LENGTH - 204 FEET.
 STARTED - APRIL 5, 1976 - COMPLETED - APRIL 8, 1976.
 DRILL CONTRACTOR - R.M. FERGUSON.
 LOG BY: - R.A. HALEY.

- 0-15 CASING.
- 15-56.0 FELSITE - GREY, MASSIVE
- 56.0-57.0 ANDESITE - FINEGRAIN, SOMEWHAT SCHISTED, FELSITE IS BLEACHED FOR 1 FOOT EACH SIDE OF THIS SECTION.
- 57.0-67.0 FELSITE AS ABOVE.
- 67.0-76.5 ANDESITE - MEDIUM GRAIN.
- 76.5-118.3 FELSITE -
- 118.3-125.2 ANDESITE
- 125.2-133.5 FELSITE, bright red alteration 130.5-133.5.
- 133.5-147.7 ANDESITE
- 147.7-167.3 FELSITE
- 167.3-175.0 ANDESITE
- 175.0-204 FELSITE - bright red alteration 175-180.
- 204 END of hole.

R. A. Haley

DH NO 4 (76).

SHEET 1.

MARION HALL GOLD MINES INC.
LAWSON TOWNSHIP - INDEPENDENT LIME MINING DIVISION.
DRILL HOLE NO 1 (76).
CLAIM 401358 - 530 FT NORTH AND
400 FT WEST OF NO 2 POST,
BEARING - 245° ASTRONOMIC -
DIP - 15° LENGTH - 227 FEET
STARTED: - APRIL 10, 1976 COMPLETED - APRIL 13, 1976.
DRILL CONTRACTOR - R. M. FERGUSON
LOGGED BY: R. A. HALET.

0-5, CASING.

5.0-7.7: FELSITE, MASSIVE, FINE-GRAINED - PINK ALTERATION.

7.7-23.5 FELSITE - Light to dark grey. prominent small phenocrysts of dark mineral.

23.5-24.0 VUGGY SECTION

24.0-26. FELSITE AS ABOVE. PINK alteration.

26.0-35.4 FELSITE - grey, massive.

35.4-35.6 CALCITE with some pyrite.

35.6-35.8 ANDESITE - fine grain. dark greenish.

35.8-55.8 FELSITE - grey, massive.

55.8-103.6 ANDESITE.

103.6-103.1 FELSITE - grey, massive, some bleached sections,
some quartz and calcite stringers, a little
pyrite disseminated, also in bunches and
stringers.

103.1-105.7 - andesite

105.7-111.8 - FELSITE - grey.

111.8-116.0 - andesite

116.0-151 - FELSITE - grey. massive some bleached
section and increasing small white
phenocrysts.

R. A. Halet

MINERALOGY G.M.
BAND 11

D.H. 4 - CONTINUED
1958
SHEET 2.

- 151.0-153.0 - FELSITE, blocky and altered,
2% pyrite in bunches and streaks.
- 153.0-155.0 - ANDESITE - SCHISTOSE.
- 155.0-158.0 - VEIN MATERIAL - Altered felsite
with 50% quartz, well mineralized
(more than 5%) with fairly coarse pyrite.
- 158.0-160 - altered felsite, few quartz stringers
and little pyrite.
- 160.0-161.2 - altered felsite - 30% quartz,
good pyrite mineralization.
- 161.2-185.0 - felsite more or less altered, some
quartz stringers, some disseminated
pyrite - From 177.8-178.4 - 90% well-
mineralized quartz.
- 185.4-188.9 - andesite
- 188.9-191.8 - felsite.
- 191.8-194.4 - andesite
- 194.4-227.00 felsite, gray, some foliation
but little alteration or mineralization.

End of hole - 227.

Ratcliff

MANHATTAN HILL 5M

100.00

DH 4 CONTINUED

(70)

SHEET 3.

SAMPLES

| NO | FROM | TO | LENGTH | GR. SOLID/TONS. |
|------|-------|-------|--------|-----------------|
| 4872 | 95 | 100 | | TR |
| 4873 | 77 | 80 | | TR |
| 4874 | 100 | 105.5 | | TR |
| 4875 | 148 | 153 | | TR |
| 4876 | 152 | 155 | | TR |
| 4877 | 155 | 161 | 6.0 | 0.175 |
| 4878 | 161 | 166 | 5.0 | 0.035 |
| 4879 | 166 | 170 | 4.0 | 0.01 |
| 4880 | 170 | 175 | 5.0 | 0.015 |
| 4881 | 176 | 177.8 | 1.8 | 0.03 |
| 4882 | 177.8 | 178.4 | 0.6 | 0.44 |
| 4883 | 178.4 | 181.0 | 2.6 | 0.305 |
| 4884 | 181.0 | 185.5 | 4.5 | TR |

Ratsolet

DH. No 6 (76)
SHEET 1

MAYSON BLUE GOLD MINES INC.
BANKERS BUILDING, LEADER LANE MINING DIVISION
WAFKONG HOTEL HALL NO 6 (76)
CLAIM 251358 - 430 FT NORTH AND 340 FT WEST
OF NO 2 POST.

BEARING - 295° ASTRONOMIC.

DIP - 45° - LENGTH. 244.

STARTED - APRIL 14, 1976 COMPLETED - APRIL 29, 1976

DRILL CONTRACTOR - R. M. FERGUSON.

LOGGED BY - R. D. HALEY.

0-10 - CASING -

10-38.8 - Felsite - grey, massive, fine grained, hard,
occasional quartz + calcite stringers.

38.8-45.5 - red alteration, some quartz + calcite stringers.

45.5-92.0 - FELSITE - sheared, bleached, numerous
quartz stringers with pyrite (Assay 0.075 oz/ton).

92.0-94.8 - Felsite - altered.

94.8-98.7 - Andesite - fine grain, greenish, soft

98.7-121.5 - Felsite.

121.5-124.4 - Andesite

124.4-140.9 - Felsite.

140.9-143.2 - Andesite.

143.2-159.0 Felsite. grey, massive

159.0-175.5 - Felsite. as above but with numerous
small white phenocrysts -

175.5-178.4 - Felsite as above, altered red.

178.4-195.0 - FELSITE - red -

135-139 - numerous well mineralized
quartz stringers.

R. D. Haley

D.H. No. 6. (76)

Sheet 2.

195.0 - 200.3 - Felsite - red - porphyritic as above.
200.3 - 201.5 - andesite.
201.5 - 215.9 - Felsite red porphyritic.
215.9 - 216.7 - andesite
216.7 - 218.3 - Felsite - red - porphyritic.
218.3 - 222.1 - Felsite - grey porphyritic.
222.1 - 222.5 - andesite.
222.5 - 225.5 - Felsite - porphyritic - bleached.
225.5 - 227.7 - andesite.
227.7 - 244.0 - Felsite - grey - porphyritic in places
244.0 - End of hole.

SAMPLES

| No | From | To | LENGTH | wt / 5000 TON |
|------|-------|-------|--------|---------------|
| 4885 | 31.7 | 32.3 | 0.6 | NIL. |
| 8330 | 37.8 | 42.0 | 3.2 | 0.095. |
| 8331 | 155.0 | 156.1 | 1.1 | 0.005. |
| 8332 | 184.3 | 186.3 | 2.0 | 0.27. 5? |
| 8333 | 186.3 | 189.0 | 2.7 | 0.03 5? |
| 8334 | 189.0 | 192.3 | 3.3 | 0.005 |
| 8335 | 195.4 | 196.9 | 1.5 | 0.05 |
| 8336 | 205.4 | 208. | 2.6 | 0.03 |

Rattalek

DH 9 (75)

Sheet 1.

BRANTON LAKE GOLD MINES, INC.

BRANTON TOWNSHIP - BRANTON LAKE MINING DIVISION.

DIAMOND DRILL HOLE NO 9 (75).

CLAIM LOCATIONS - 345 FT NORTH AND 450 FEET WEST OF NO 2 HOLE.

HEADING - 252.° AZIMUTH

DIP - 49° - LENGTH 215

STARTED - MAY 9 - 1975. FINISHED - MAY - 17, 1976.

DRILL CONTRACTOR - R. M. FERGUSON.

LOGGED BY - R. A. HALL

0-16 - CASING.

16-18.5 - ANDESITE - fine grained, massive, greenish

18.5-23.8 - ANDESITE - medium grain, discrete texture, brown floor in last few inches.

23.8-27.2 - ANDESITE - fine grained, chilled edge at contact with secondary rock dyke.

27.2-45.0 - ANDESITE - fine grain, light grey, massive, numerous small phenocrysts of dark mineral.

45-46.5 - cherty

46.5-48.0 - somewhat foliated, some veinlets and discontinuities of pyrite throughout.

48.0-49.3 - ANDESITE - fine grain, massive.

49.3-60.0 - FELSITE as above.

60.0-63.1 - FELSITE - dark grey, fine grain, with white phenocrysts up to 1/4" - sharp contacts (1/2")

63.1-81.7 - FELSITE as above.

81.7-83.0 - ANDESITE - fine grained

83.0-100.0 - FELSITE - somewhat darker.

R. A. Hall

Maple Hill GM.

DH 9-(76)
Sheet 2

- 140-145.5 - FELSITE - porphyritic - gray fine grained ground mass, with prominent white phenocrysts alternating with non-porphyritic sections. - massive.
- 145.5-147.5 - andesite fine grain.
- 147.5-148.7 - FELSITE, sheared, some quartz, very little pyrite.
- 148.7-1740 - FELSITE, pink to dark gray, massive, fine grain, patches and disseminations of pyrite.
- 1740-1751.2 - Andesite - fine grain, with 1/2" inclusion of felsite. - 1/2 inch quartz at upper contact.
- 1751.2-1930 - FELSITE - medium grain - red.
- 1930-203 - FELSITE - PINK to dark gray.
- 203-215 - FELSITE - Porphyritic, very small phenocrysts.
- 215 - End of data.

Rovale

7-7. (75)
B.

2-11-9.

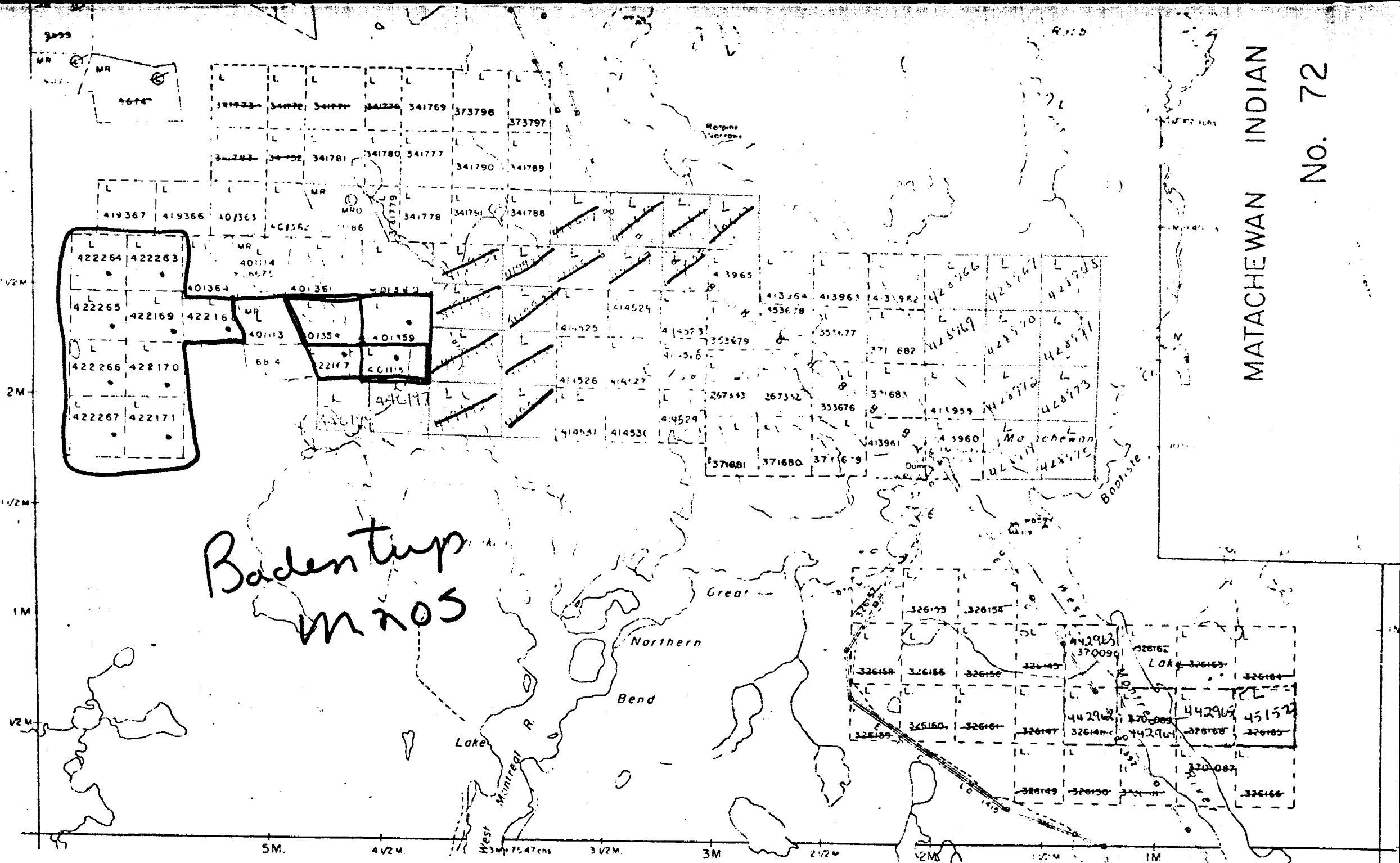
| ID | Weight | Length | Width | OZ. GOLD/TON. |
|------|--------|--------|-------|---------------|
| 8337 | 27.1 | 30 | 2.9 | Tr. |
| 8338 | 30 | 35 | 5.0 | Tr. |
| 8339 | 35 | 40 | 5.0 | Tr. |
| 8340 | 40 | 44 | 4.0 | Tr. |
| 8341 | 44 | 48 | 4.0 | 0.005. |
| 8342 | 49.2 | 55 | 5.8 | Tr. |
| 8343 | 55.7 | 60 | 1.1 | Tr. |
| 8344 | 72.0 | 75 | 1.0 | 0.005. |
| 8345 | 147.4 | 150.0 | 2.6 | 0.015 (140m) |
| 8346 | 150 | 155 | 5.0 | Tr. |
| 8347 | 155 | 156.5 | 1.5 | Tr. |
| 8348 | 156.5 | 157.5 | 5.0 | 0.005. |
| 8349 | 178.2 | 180 | 2.8 | 0.015 |
| 8350 | 181.0 | 185 | 4.0 | 0.01. |
| 8351 | 185 | 190 | 5.0 | 0.005. |

Rattler

148-76

C. M. HAMES

Argyle Twp. M. 203



MATACHEWAN INDIAN
No. 72

DH No. 7. (75)
Sheet 1

MANITOW LAKE GOLD MINES INC.

SADON TOWNSHIP - LACROIX LAKE MINING DIVISION.

DRILL HOLE NO 7 (75)

CLAIM 401355 - 570 feet north end.
450 feet west of NO 2 POST.

BEARING: 234° isonomic.

DIP: 55°. LENGTH: 207

STARTED - MAR 20, 1976. FINISHED: APR. 23.

DRILL CONTRACTOR - LACROIX DIAMOND DRILLING CO LTD

LOGGERS - R. A. HAZLET.

0-33.6 - Casing.

33.6-50.4 - Felsite - light to dark grey,
massive, fine grains, numerous small
dark phenocrysts

50.4-55.1 - andesite - dark greenish, fine grains,
very sharp contacts, probable dyke.
chert stringers to 1/2 inch

55.1-66.8 - felsite as above, light grey

66.8-69.7 - andesite, schistose

69.7-73.3 - felsite as above.

73.3-75.0 - Vein material - bleached and
altered felsite with quartz and
abundant pyrite - Sample 4392 - 2.2602 from

75.0-81.3 - felsite - bleached

81.3-84.5 - quartz with abundant pyrite
Sample 4393 - 2.005 - after

84.5-87.2 - andesite as above.

87.2-100 - felsite - grey, with abundant
silica. some precipitation

Boundaries of pyrite 95.5 and 97.5.

DH No 7 - (25)
Sheet 2.

- 100-101- andesite.
101-104 - Schistose section, felsite and andesite.
at 103.2 some quartz & pyrite
sample 4844 - 0.35.
104-115.2 - grey felsite
115.5-153.2 - felsite, massive, medium grain,
red - (syenite?).
132-132.5 - numerous small quartz stringers
with pyrite in cubes.
sample 4895 - 0.545 section.
153.2-159.7 - felsite, similar to previous
section but grey
159.7-163.2 - andesite
163.3-168.0 - grey felsite
168-207 - grey felsite, some sections
containing numerous small
white prismatic
207 - End of hole.

DH NO 8.

MANITO LAKE GOLD MINES INC.
BADEN TOWNSHIP. LARGER LAKE MINING DIVISION.
DRILL HOLE NO 8. (76).

CLAIM 401353 - 580 FEET NORTH AND
458 FEET WEST OF NO 2 POST.
SAME LOCATION AS NO 7.

BEARING - 234° ASTRONOMIC

DIP - 65° - LENGTH - 157 feet

STARTED - APRIL 24, 1976 - FINISHED - APRIL 26, 1976.

DRILL CONTRACTOR - HOSKING MANITO DRILLING LTD
LOGGED BY - R. A. HACKETT

0-24.0 - Casing.

24.0-68.9 - felsite, massive, fine grain,
light to dark grey.

68.9-74.1 - andesite, very low angle to core

74.1-111.1 - felsite massive - some pyrite
in bunches

111.1-111.4 - andesite.

111.4-114.5 - grey felsite

114.5-119.5 - andesite.

119.5-130.0 - grey felsite, considerable bleaching,
some stringers with pyrite

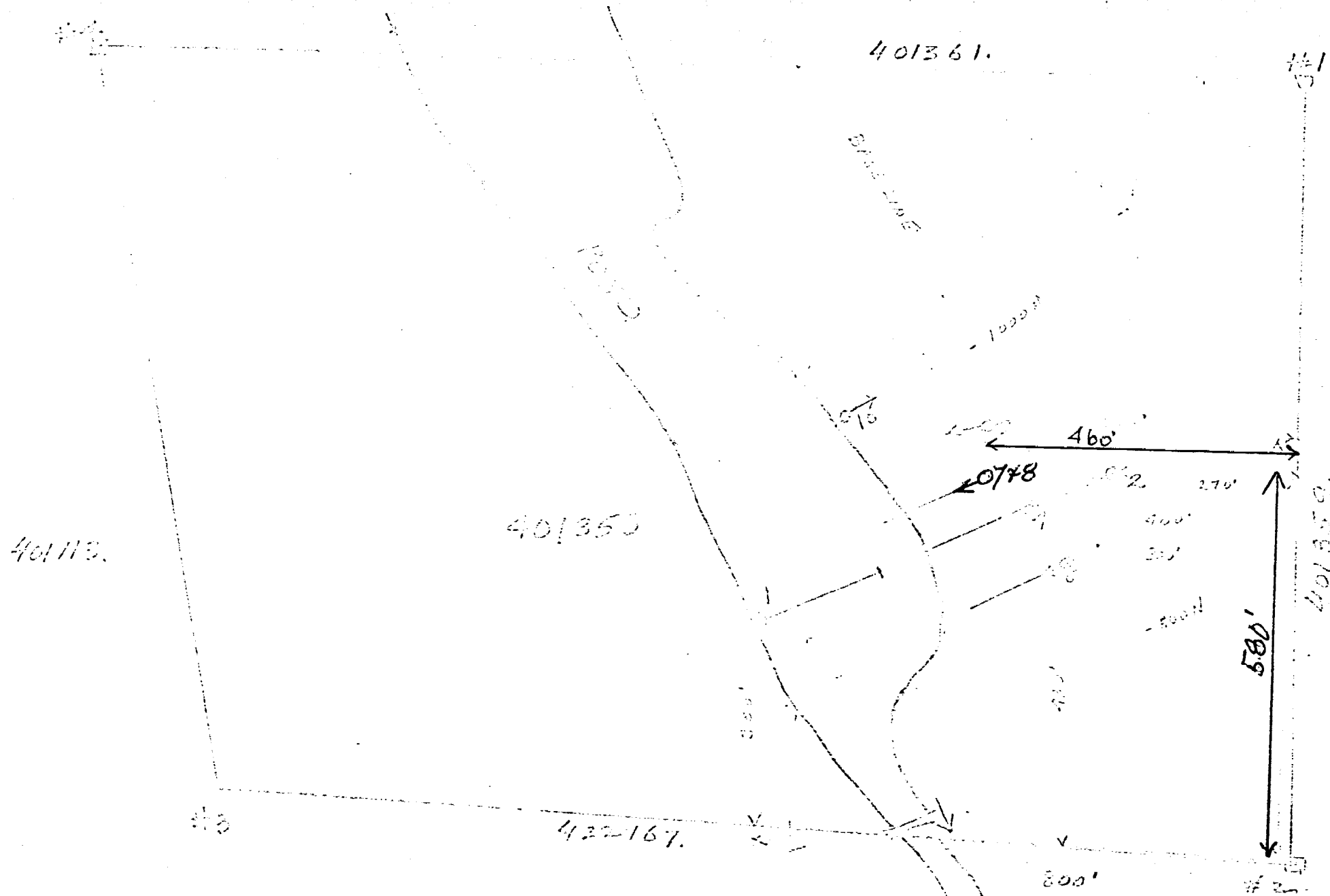
130.0-131.8 - schistose section with much quartz
from 131.8-131.8 - andesite from 131.8-133.

Most of mineralization is in 6 inch
section just ahead of andesite

Sample 4900-3.1 - 0.87 g/ton.

133.0-157.0 - grey felsite becoming red in
last foot

157.0 - End of hole



SKETCH OF CLAIM 401358.

1 INCH = 200 FEET

DH No 3 (76)
SHEET. 1.

MANITOWIC GOLD MINES INC.

BADEN TOWNSHIP - LADDER LAKE MINING DIVISION.

DRILL HOLE NO 3 (76)

CLAIM 40115 - 375 feet East and
412 ft south of No 4 Post.

BEARING - 238° ASTRONOMIC

DIP - 45° LENGTH: 501 Feet

STARTED: - APRIL 7, 1976 FINISHED: - APRIL 11, 1976

DRILL CONTRACTOR - HOSKING DIAMOND DRILLING LTD
LOGGED BY: R.A. HALET.

0-43 - casing.

43-45 - ANDESITIC TUFF(?) - green, fine-grain,
vague banding.

45-110.5 - FELSITE; - greenish grey to reddish
massive, numerous chloritic spots up
to $\frac{1}{8}$ inch, occasional breccia, numerous
small quartz veinlets. - Probably extrusive.

110.5-116.6 - andesitic - dark green, fine grain.
 $\frac{1}{4}$ inch chilled margin at upper contact
probably a dyke.

116.6-119 - Felsite as above, altered red.

119-122.6 - Andesite.

122.6-130.8 - Felsite - red alteration.

130.8-135.3 - andesite.

135.3-143.5 - Felsite - fine grained as above
grading into:

143.6-184.0 - Felsite, somewhat coarser grain,
massive, grey to buff, very hard.

184-203.5 - Felsite - fine grain, grades into
coarser grain darker variety.

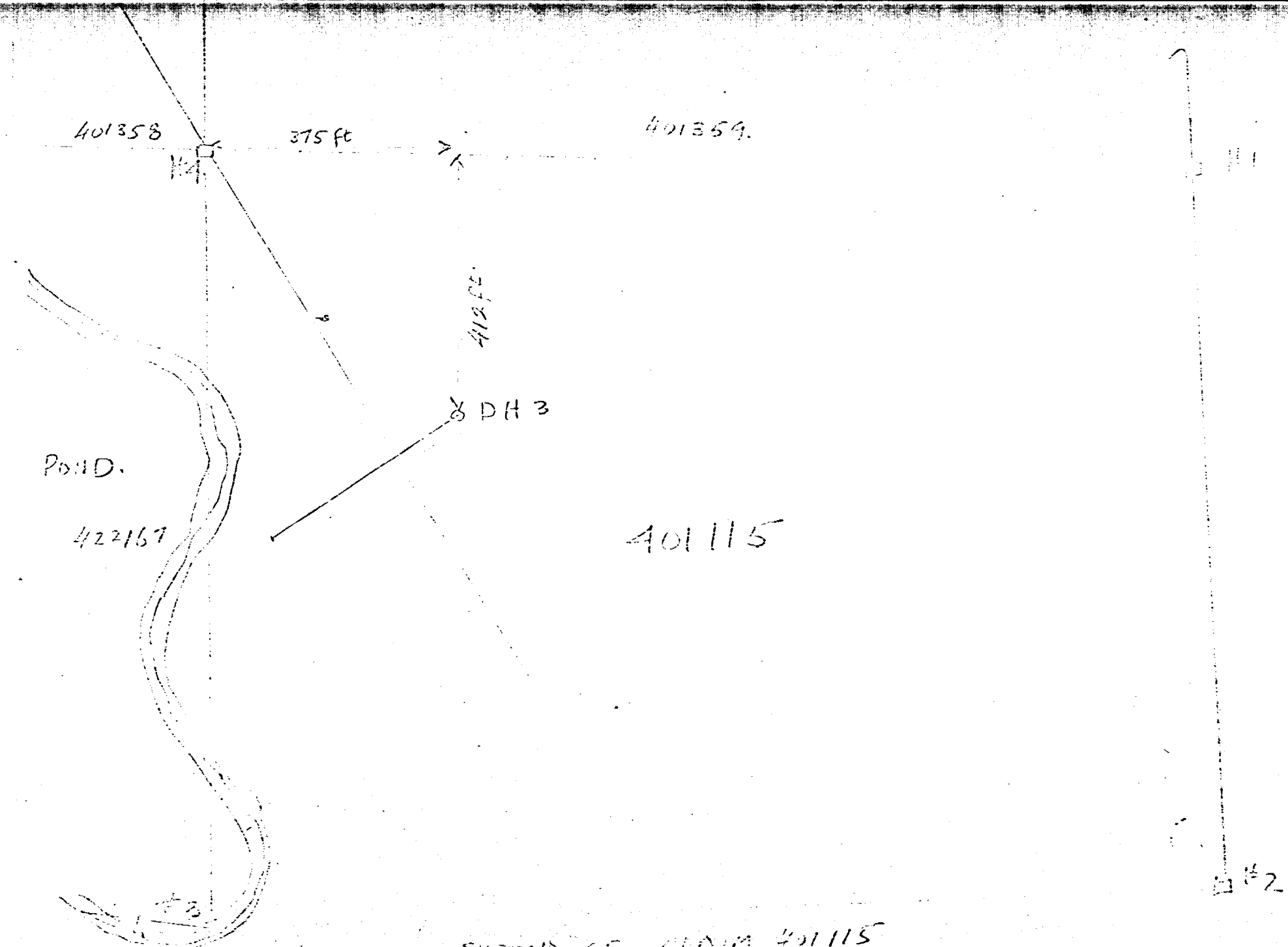
MANITOU LAKE GOLD MINING DISTRICT DA NO 3
SHEET 2

- 191.5-192+3 - Shear with 5-10% pyrite
possibly No 2 vein -
- 203.5-209 - Felsite - coarser grain, darker.
- 209-211.5 - Felsite - fine grain, red alteration
- 211.5-233.6 - Andesite - fine to medium grain
greenish, numerous tiny veinlets
of quartz + calcite - probably tuff.
- 233.6-240.2 - Felsite - red, massive, black spots,
sharp contacts, probably a dyke
- 240.2-256 - andesite - massive, grey green
medium grain, both contacts chilled,
probably a dyke
- 256-288 - felsite - red with chloritic spots
- 288-292 - andesite - massive (tuff or dyke)
- 292-350.5 - Felsite - and banded tuffs
look extrusive.
- 350.5-490.6 Felsite - massive, white,
medium grain with prominent
clusters of dark mineral; - probably
intrusive - Numerous small
andesitic dykes.
- 490.6-501 - Andesitic - massive,

501 - End of hole.

This hole shows a
complex assemblage of intrusive and
hypabyssal igneous rocks; lack of adequate
surface exposure makes interpretation
difficult

RH



SKETCH OF CLAIM 40115
1 INCH = 200 FEET