

63-3554



42A02SW0317 63.3554 BADEN

010

MANITOU LAKE GOLD MINES INC.

BADEN TOWNSHIP PROPERTY

ONTARIO

SUMMARY REPORT ON  
ELECTROMAGNETIC AND  
MAGNETIC CHECK SURVEY  
ON A PORTION  
OF THE PROPERTY

MARCH 28, 1978

BY: S.S. SZETU, Ph.D., P.Eng. and  
MICHAEL Ogden, B.A.Sc., P.Eng.

H. B. & O. ENGINEERING LIMITED

MANITOU LAKE GOLD MINES INC.  
BADEN TOWNSHIP PROPERTY  
ONTARIO

Summary Report on electromagnetic and magnetic check survey on a portion of the property.

INTRODUCTION

The field work was done during the week of March 13 to 18, 1978, by Dr. S. S. Szetu, P.Eng., using a Ronka EM-16 instrument with transmitter station NSS, and Michael Ogden, P.Eng., with a Coni-Mag G-1 Magnetometer. The purpose of the investigation was to locate anomalous zones in the vicinity of the old Arbade shaft and along strike of the previous drilling on either side of the creek.

The old Quilty showing southwest of lower pond was also investigated with negative results.

METHOD

Using the lines that are cut in a northeasterly direction over most of the area surveyed, the readings were taken at 50-foot intervals along these lines, which are usually 400 feet apart.

The magnetometer survey of February 1977 covering the vicinity of the upper pond, has been added to the new map that accompanies this work, in order to present a more complete picture.

RESULTS

(1) An electromagnetic conductor similar to those found over shear zones or fault systems was located some 500 feet southwest of the Arbade shaft on L16N 4375' W. Other indications on L20N and L12N suggest that the fault or shear zone trends in a northerly direction at about  $30^{\circ}$  to the apparent strike of the

ein system at the shaft. A drill hole is recommended on line 16N from 4550 feet west, drilled to the east, to cover 250 feet horizontally. This would probe both the anomalous EM and magnetic zones.

(2) There is a weak indication of a possible fracture zone trending parallel to the base line at about 3050 feet west on lines 8N, 12N, and 16N. This appears to be the northeastern edge of the large syenite dykes where the shaft was sunk and is thus worthy of a drill hole.

(3) To the immediate north of two small outcrops of syenite observed last November near line 8N, there is a vague zone which strikes northerly parallel to shearing on one of the outcrops. This vague zone is inferred as possible fractures or a minor shear along the north contact of the syenite. Further investigation of the nearby outcrops may help to resolve the possibilities of this zone.

(4) The broad anomaly over the vicinity of the creek is typical of the results obtained over <sup>conductive</sup> constructive overburden. Concealed conductors, if any, may or may not be detectable by other electromagnetic methods.

It is interesting to note that the above-mentioned EM-16 anomaly straddles a sizeable magnetic area with readings in the same order (over 400) as detected over the large syenite dyke where the shaft was sunk. Geological examination to be assisted by trenching at the high ground area located on L12N 27W should be carried out to check the possible occurrence of syenite for further evaluation of the geophysical indications and for the possibility of having gold mineralization.

In addition to the above, the magnetic survey on the west part of the property has obtained some indications to support the interpretation of the EM-16 anomalies described in (1), (2) and (3).

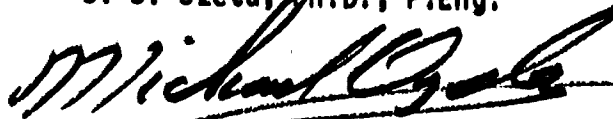
(5) On the eastern part of the property, the magnetic results are very useful in locating the edges of the diabase dyke where it happens to be magnetic.

The vicinity of the syenite and diabase contact area should be investigated in outcrop and near outcrop. Failing that a hole or two should be drilled to investigate for the possible repetition of the French vein, i.e., a gold vein alongside the dyke. The area of interest is west of upper pond, from 10S to 20S, some 400 to 600 feet west of the south base line.

(6) Neither the magnetometer nor the EM-16 check work gave any indication of anomalous results along a north-south line over the long trench of Tom Quilty's in area (6).

Respectfully submitted,

S. S. Szetu, M.D., P.Eng.



Michael Ogden, B.A.Sc., P.Eng.

Toronto, Ontario

March 28, 1978

REPORT ON 1978 EXPLORATION PROGRAM

MANITOU LAKE GOLD MINES INC.

BADEN TOWNSHIP PROPERTY

The company holds a group of 32 mining claims in Baden Township, Larder Lake Mining Division, Ontario, numbered as follows:-

L.401113 to 401115 inclusive

L.401358 to 401364 inclusive

L.422167 to 422171 inclusive

L.422263 to 422267 inclusive

L.496685 to 496690 inclusive

L.506536 to 506541 inclusive

During 1976 and 1977 twenty-one diamond drill holes with a total length of 4,759' were put down on claims 401358, 401115 and 401361 to explore (1) a northwesterly-trending zone of gold-bearing fractures which had been partially explored in 1937 by Fondewa Gold Mines Ltd., and (2) the Ronda diabase dyke, a northeasterly-trending structure with which gold-bearing veins are associated on neighbouring claim MR 81186.

This work did not disclose gold deposits of probable economic importance and the 1978 program was devoted to preliminary exploration of other areas on this large property.

The first area to be considered was the northwesterly-trending drift-filled valley on claims 401361, 401362 and 401363. This valley contains the possible extension of the Fondewa gold-bearing zone, and is parallel to the belt of syenite dykes which had been partially explored in the 1930's on claim 401364 (Arbade zone). An E.M. and magnetic survey was done in this area in March 1978 by S.S. Szetu and Michael Ogden. This work gave the following indications:

- (1) An E.M. conductor similar to those found over shear zones or fault systems some 500 feet southwest of the Arbade shaft.

- (2) A weak indication of a possible fracture zone on the northeastern edge of the syenite dyke swarm which contains the Arbade zone.
- (3) A vague zone lying to the north of the creek on the largely drift-covered valley on claim 401362.

After further study of the ground it was decided to explore areas (2) and (3) by drill holes, for possible shear zones or fractured syenite dykes. The first three holes of the 1978 program numbered 22, 23 and 26, with a total length of 953 feet were drilled in this area; holes 24 and 25 were lost in overburden. The holes intersected a monotonous succession of andesitic lavas and pyroclastics with no shear zones or syenite dykes. The holes did not reach the north edge of the syenite dyke swarm.

Hole 27 and 28 (total length 187 feet) were designed to explore the Ronda dyke in an area where it was quite highly magnetic, and which is some 500 feet south of previous drilling. No gold-bearing quartz was intersected.

The final hole of the program (No. 29) was drilled under a showing of gold-bearing veinlets (stock work) on claim 496685. Nothing of interest was encountered.

Total footage drilled in 1978 was 1341.



R. A. Halet

November 30, 1978

# DIAMOND DRILL LOG

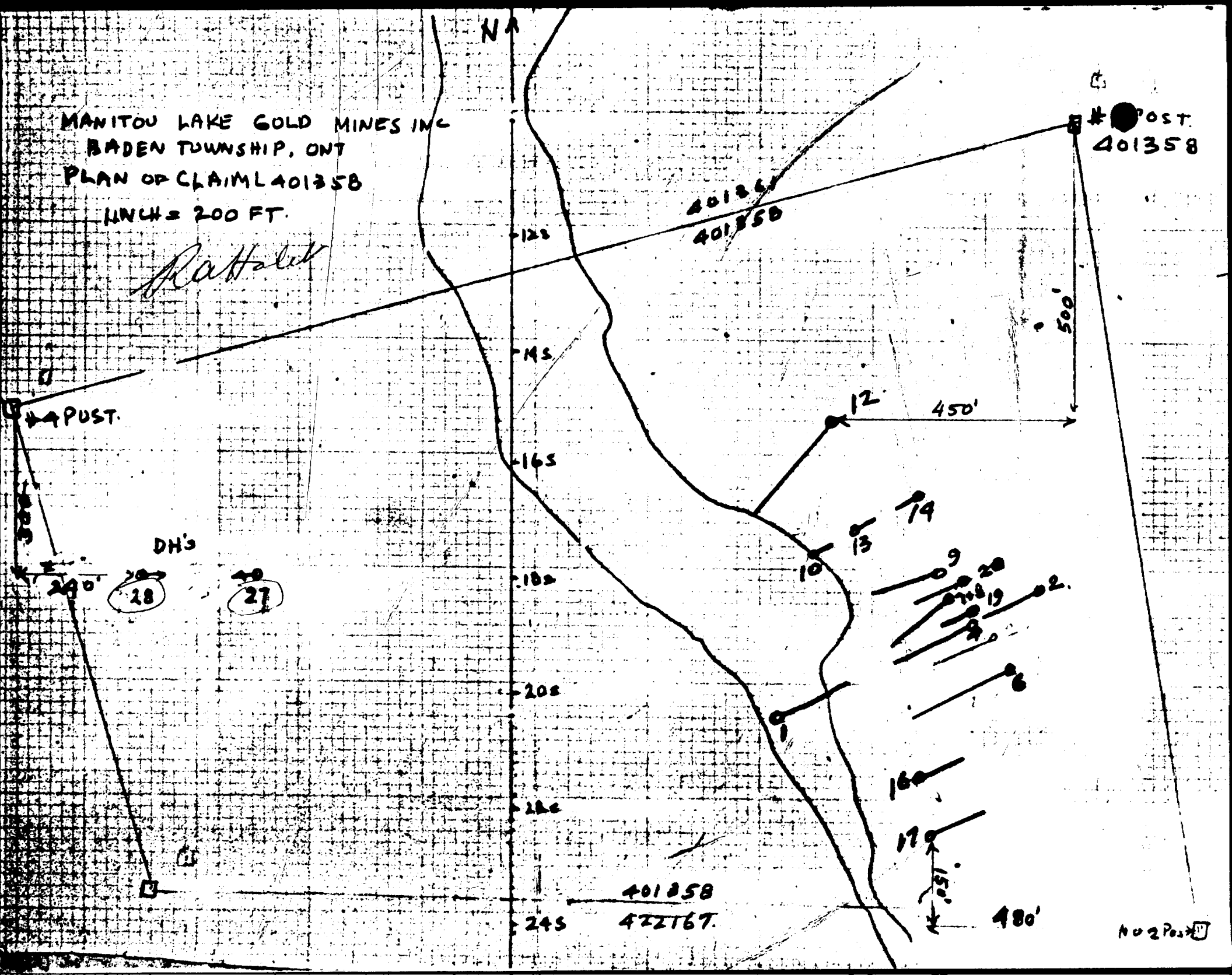
**PROPERTY:** MANITOU LAKE GOLD MINES INC. **HOLE NUMBER:** 28  
**LOCATION:** Baden Township, Larder Lake Mining Division, Ontario **DIP TESTS**  
 Claim No. 401358  
**XXXXXXXX** Dip: 45° **Footage**      **Reading**      **Corrected**  
**XXXXXXXX** 300' south and **Depth:** 120 feet  
 240' east of #4 **Commenced:** August 7, 1978 **Drilled:** R.M. Ferguson  
**XXXXXXXX** Post **Finished:** August 14, 1978 **Logged by:** R. A. Halet  
**Asimuth:** 90° astronomic

SAMPLE NUMBER	DESCRIPTION		
	0.0 - 2.2 Casing		
	2.2 - 12.0 Feldspar porphyry, greenish and pinkish		
	12.0 - 28.0 Greenstone, vague banding.		
	28.0 - 30.0 Porphyritic, pink and green.		
	30.0 - 45.2 Greenstone as above.		
	45.2 - 58.3 Massive, pink and grey, very fine grained, stringers of quartz with chalcopryite.		
	58.3 - 69.0 Greenstone, massive, core much broken.		
	69.0 - 107.0 Syenite(?), massive, not porphyritic, very fine grained, bright pink and green sections alternate, considerable epidote. No core 79 - 80 - cemented.		
	107.0 - 120.0 Diabase, sharp contact, fine grained near contact, medium grained dark rock otherwise.		
<u>SAMPLE RECORD</u>			
	<u>From</u> <u>To</u> <u>Length</u> <u>Material</u> <u>Gold - Oz/Ton</u>		
4079	32.3    32.4      0.1      Quartz		0.035
4080	42.8    43.7      0.9      Syenite		0.005
4081	48.1    48.2      0.1      Quartz - little chalco.		Tr.
4082	52.8    53.7      0.9      Syenite & quartz		0.005
4083	57.8    58.5      0.7      "                      "		0.005
4084	50.9    51.8      0.9      "                      "		0.005
4085	104.0    105.1      1.1      "                      "		Tr.

*R. A. Halet*

MANITOU LAKE GOLD MINES INC  
 BADEN TOWNSHIP, ONT  
 PLAN OF CLAIM 401358  
 UNITS = 200 FT.

*R. H. Hall*



POST  
 401358

401358  
 401358

125

145

165

185

205

225

245

500'

450'

480'

150'

401358  
 422167.

No 2 Post

DH's

28

27

10

13

14

9

20

19

2

6

16

17

POST.

240'


300'

NA



# DIAMOND DRILL LOG

**PROPERTY:** MANITOU LAKE GOLD MINES INC. **HOLE NUMBER:** 22  
**LOCATION:** Manitou Lake - Baden Twp. **DIP TESTS**  
 Claim #401362  
**Orientation:** 480' south of Dip: 45° **Footage**  
**Depth:** #1 Post **Reading**  
 760' west of **Depth:** 294 ft. **Corrected**  
 #1 Post **Commenced:** May 30, 1978  
**Asimuth:** 72° **Finished:** June 14, 1978 **Logged by:** R. A. Halet

SAMPLE NUMBER	DESCRIPTION	SAMPLE LENGTH	GOLD ASSAY
	0.0 - 1.6 Casing		
	1.6 - 92.6 Grey andesitic lava, massive, soft, fine-grained, occasional fragments of rhyolite up to one inch. Porphyritic in places with light and dark phenocrysts up to 0.1 inch.		
	92.6 - 101.4 Diabase - green-grey, massive, medium-grained, finer grained towards edges.		
	101.4 - 232.0 Grey andesite as above		
4102	213 - 215.6 Quartz stringer nearly parallel to core with abundant pyrite in near massive aggregates up to 3 inches long Sample 213.3 - 213.9	0.6'	0.005
4103	232 - 267.6 Breccia of dark angular fragments up to 1/2 inch in matrix which appears to be quartz and carbonate, very fine disseminate pyrite - looks like a tectonic breccia, some sections unbrecciated and some rhyolite fragments preserved. Sample 250 - 250.5 and 255 - 256	1.5'	Tr.
	267.6 - 294 Grey andesite as above.		
	294 End of hole.		
<b>NOTES:</b> Open fracture at 47 - cemented. Bad cave at 87 - cemented. Lost water at 294 - cemented. Hole stopped.			
			

# DIAMOND DRILL LOG

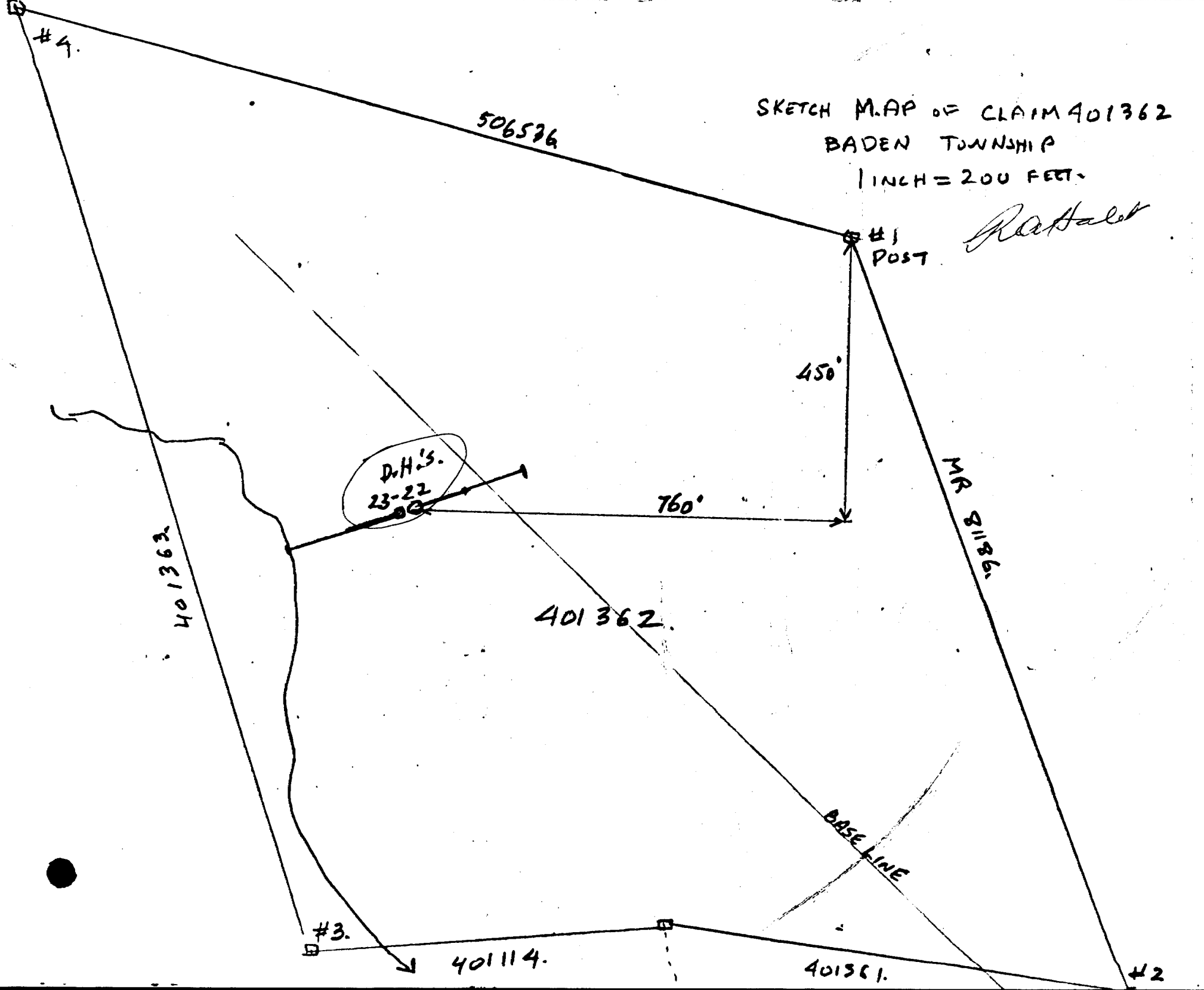
**PROPERTY:** MANITOU LAKE GOLD MINES INC. **HOLE NUMBER:** 23  
**LOCATION:** Manitou Lake - Baden Twp. **DIP TESTS**  
                   Claim 401362  
~~XXXXXXXXXX~~ Same location Dip: 45° Footage Reading Corrected  
                   as Hole 22. Depth: 347 ft.  
~~XXXXXXXXXX~~ Commenced: June 14, 1978  
~~XXXXXXXXXX~~ Azimuth: 152° Finished: June 19, 1978 Logged by: R. A. Halet

SAMPLE NUMBER	DESCRIPTION	Sample Length	Gold Assay
	0.0 - 1.0 Casing		
4101	1.0 - 99.3 Volcanic breccia, rhyolitic fragments in andesitic matrix, somewhat schistose, chloritized and carbonated, gradually gets less schistose and harder. 84 - 84.6 Quartz vein	0.6'	Tr.
	99.3 - 108.1 Diabase		
	108.1 - 160.0 Volcanic breccia as above, numerous small quartz calcite stringers.		
	160.0 - 347.0 Volcanic breccia, rhyolite fragments get larger below 250 (one is 12 inches diameter at 280) Last foot banded tuff. Cemented hole at 337.		
	347 End of hole.		

*R. A. Halet*

SKETCH M. AP OF CLAIM 401362  
BADEN TOWNSHIP  
1 INCH = 200 FEET.

*Rattal*



# DIAMOND DRILL LOG

PROPERTY: MANITOU LAKE GOLD MINES INC.

HOLE NUMBER: 24

LOCATION: Manitou Lake - Baden Twp.  
Claim 401363

DIP TESTS

<del>XXXXXXXX</del>	580' west and	Dip: 45°	Footage	Reading	Corrected
<del>XXXXXXXX</del>	150' north of	Depth: 37 ft.			
	#2 Post				

~~XXXXXXXX~~ Commenced: June 25, 1978

Azimuth: Finished: June 28, 1978      Logged by: R. A. Halet

SAMPLE NUMBER	DESCRIPTION		
0 - 37	Glacial drift - large boulders - abandoned.		

*R. A. Halet*

# DIAMOND DRILL LOG

**PROPERTY:** MANITOU LAKE GOLD MINES INC. **HOLE NUMBER:** 25  
**LOCATION:** Manitou Lake - Baden Twp. **DIP TESTS**  
~~XXXXXXXX~~ Same as Hole No. 24. **Dip:** 49° **Footage** **Reading** **Corrected**  
~~XXXXXXXX~~ **Depth:** 16 ft.  
~~XXXXXXXX~~ **Commenced:** June 28, 1978  
**Asimuth:** **Finished:** June 29, 1978 **Logged by:** R. A. Halet

SAMPLE NUMBER	DESCRIPTION		
	0 - 16 Glacial drift and boulders - abandoned.		

*R. A. Halet*

# DIAMOND DRILL LOG

(Holes #24 & #25  
abandoned in overburden)

PROPERTY: MANITOU LAKE GOLD MINES INC.

HOLE NUMBER: 26

LOCATION: Manitou Lake - Baden Twp.  
Claim 401363

DIP TESTS

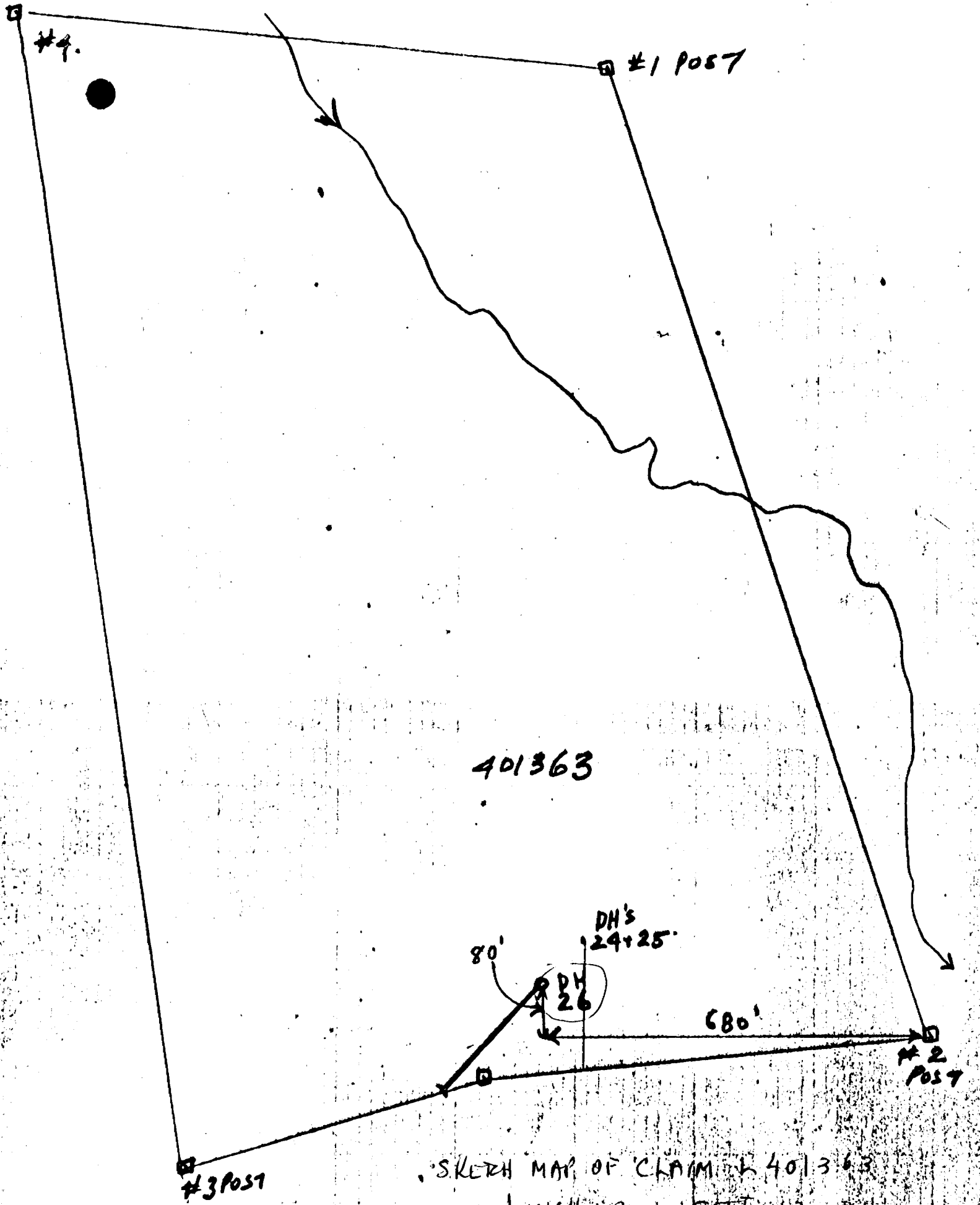
<del>XXXXXXXX</del>	80' north and	Dip:	Footage	Reading	Corrected
<del>XXXXXXXX</del>	680' west of	Depth: 312 ft.			
<del>XXXXXXXX</del>	#2 Post				

~~XXXXXXXXXX~~ Commenced: June 29, 1978

Azimuth: Finished: July 12, 1978      Logged by: R. A. Halet

SAMPLE NUMBER	DESCRIPTION		
0 - 37	Casing (much trouble - 4 shifts)		
37 - 312	Volcanic breccia - rhyolite fragments in andesitic matrix - slightly schistose & carbonated.		
312	End of hole.		
	Cave at 213 - cemented Cave at 275 - sand seam		

*R. A. Halet*




401363

SKETCH MAP OF CLAIM # 401363  
 1 INCH = 200 FEET

*R. H. Hall*

# DIAMOND DRILL LOG

**PROPERTY:** MANITOU LAKE GOLD MINES INC. **HOLE NUMBER:** 27  
**LOCATION:** Baden Township, Larder Lake Mining Division, Ontario **DIP TESTS**  
 Claim No. 401358  
~~XXXXXXXX~~ **Dip:** 45° **Footage** **Reading** **Corrected**  
~~XXXXXXXX~~ 300' south and 335' east of #4 **Depth:** 67 feet  
 Post  
~~XXXXXXXX~~ **Commenced:** August 2, 1978 **Driller:** R.M. Ferguson  
 Matachewan, Ont.  
**Azimuth:** 270° astronomic **Finished:** August 4, 1978 **Logged by:** R. A. Halet

SAMPLE NUMBER	DESCRIPTION		
	0.0 - 8.0 Casing		
	8.0 - 24.0 Grey, massive, fine grained, slightly porphyritic (syenite?) some epidote in fractures, some pink alteration.		
	24.0 - 26.8 No core.		
	26.8 - 49.5 Syenite as above, massive, mostly red in various shades, some minor fractures with chlorite.		
	49.5 - 51.6 Strongly altered, yellowish green.		
	51.6 - 58.0 Syenite as above.		
	58.0 - 67.0 Diabase, fine grain near contact.		
<u>SAMPLE RECORD</u>			
	<u>From</u> <u>To</u> <u>Length</u> <u>Material</u> <u>Gold - Oz/Ton</u>		
4076	43.2      44.2      1.0      Syenite with stringers		0.005
4077	54.0      55.0      1.0      Syenite, some pyrite		0.005
4078	49.5      50.0      0.5      Epidote, some qtz.		0.015
			



# DIAMOND DRILL LOG

PROPERTY: MANITOU LAKE GOLD MINES INC.

HOLE NUMBER: 29

LOCATION: Baden Township, Larder Lake Mining Division, Ontario  
Claim No. 496685

**DIP TESTS**

XXXXXXXXXX 110' south and Dip: 50° Footage Reading Corrected  
XXXXXXXXXX 270' west of #1 Depth: 201 feet Driller: R. M. Ferguson  
XXXXXXXXXX Post

Matachewan, Ont.

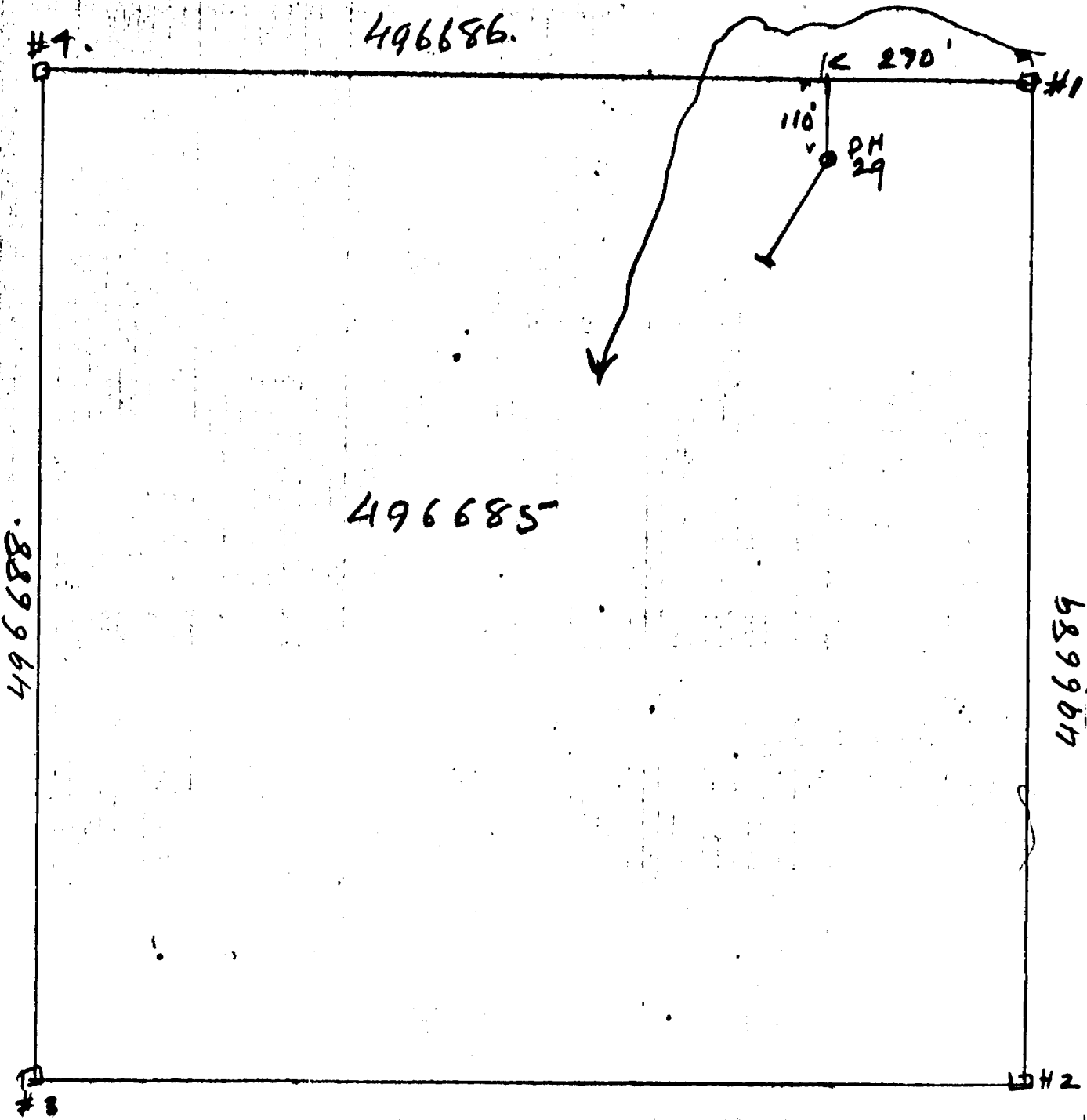
XXXXXXXXXX Commenced: October 25, 1978

XXXXXXXXXX Azimuth: 135° astronomic Finished: November 7, 1978

Logged by: A. Byberg and R. A. Halet

SAMPLE NUMBER	DESCRIPTION		
	0.0 - 30.0 Casing		
	30.0 - 120.4 Andesite - grey, porphyritic in places. 50 - 54.1 Quartz stock-work.		
	120.4 - 123.4 Diabase? Some calcite stringers.		
	123.4 - 161.0 Andesite as above.		
	161.0 - 163.0 Schistose, with quartz calcite stringers.		
	163.0 - 169.3 Diabase? Numerous calcite stringers.		
	169.3 - 176.2 Andesite gray, porphyritic.		
	176.2 - 201.0 Greenstone, coarser grained, some sections carbonated, calcite stringers in places.		
<u>SAMPLE RECORD</u>			
	<u>From</u> <u>To</u> <u>Length</u> <u>Material</u> <u>Gold Oz/Ton</u>		
4086	50    54.1    4.1    Quartz stock-work		0.01
4087	54.1    57.5    3.4    Wall rock		Tr.
4088	161    163    2.0    Quartz & schist		Tr.

*R. A. Halet*



SKETCH MAP OF CLAIM A 496685  
BADEN TOWNSHIP.

1 INCH = 200 FEET.

*W. H. Hales*



# BELL-WHITE ANALYTICAL LABORATORIES LTD.

P.O. BOX 187,

HAILEYBURY, ONTARIO

TEL: 872-3107

## Certificate of Analysis

NO. 7129

DATE: June 19, 1978.

SAMPLE(S) OF: Core(1)

RECEIVED: June 19/78.

SAMPLE(S) FROM: Mr. A. Byberg, Manitou Lake Gold Mines.

Sample No.

Oz. Gold

D4101

Trace

IN ACCORDANCE WITH LONG-ESTABLISHED NORTH AMERICAN CUSTOM, UNLESS IT IS SPECIFICALLY STATED OTHERWISE GOLD AND SILVER VALUES REPORTED ON THESE SHEETS HAVE NOT BEEN ADJUSTED TO COMPENSATE FOR LOSSES AND GAINS INHERENT IN THE FIRE ASSAY PROCESS.

BELL-WHITE ANALYTICAL LABORATORIES LTD.



# BELL-WHITE ANALYTICAL LABORATORIES LTD.

P.O. BOX 187,

HAILEYBURY, ONTARIO

TEL: 672-3107

## Certificate of Analysis

NO. 7237

DATE: June 20, 1978.

SAMPLE(S) OF: Core(2)

RECEIVED: June 20/78.

SAMPLE(S) FROM: Mr. A. Byberg, Manitou Lake Gold Mines.

<u>Sample No.</u>	<u>Oz. Gold</u>
D4102	0.005
D4103	Trace

IN ACCORDANCE WITH LONG-ESTABLISHED NORTH AMERICAN CUSTOM, UNLESS IT IS SPECIFICALLY STATED OTHERWISE GOLD AND SILVER VALUES REPORTED ON THESE SHEETS HAVE NOT BEEN ADJUSTED TO COMPENSATE FOR LOSSES AND GAINS INHERENT IN THE FIRE ASSAY PROCESS.

BELL-WHITE ANALYTICAL LABORATORIES LTD.

PER 



# BELL-WHITE ANALYTICAL LABORATORIES LTD.

P.O. BOX 187.

HAILEYBURY, ONTARIO

TEL: 872-3107

## Certificate of Analysis

NO. 8082

DATE: July 10, 1978.

SAMPLE(S) OF: Core(3) Rock(1)

RECEIVED: July 10/78.

SAMPLE(S) FROM: A. Byberg, Esq., Manitou Lake Gold Mines.

<u>Sample No.</u>	<u>Oz. Gold</u>
D4069	Trace
D4070	Trace
D4071	0.38 - boulder
D4072	0.005

BELL-WHITE ANALYTICAL LABORATORIES LTD.

PER

IN ACCORDANCE WITH LONG-ESTABLISHED NORTH AMERICAN CUSTOM, UNLESS IT IS SPECIFICALLY STATED OTHERWISE GOLD AND SILVER VALUES REPORTED ON THESE SHEETS HAVE NOT BEEN ADJUSTED TO COMPENSATE FOR LOSSES AND GAINS INHERENT IN THE FIRE ASSAY PROCESS.



# BELL-WHITE ANALYTICAL LABORATORIES LTD.

P.O. BOX 187,

HAILEYBURY, ONTARIO

TEL: 872-3107

## Certificate of Analysis

NO. 8316

DATE: July 13, 1978.

SAMPLE(S) OF: Rock(3)

RECEIVED: July 13/78.

SAMPLE(S) FROM: Mr. A. Byberg, Manitou Lake Gold Mines.

<u>Sample No.</u>	<u>Oz. Gold</u>
D4073	0.115
4	0.13
5	0.005

*PURITY*

BELL-WHITE ANALYTICAL LABORATORIES LTD.

PER 

IN ACCORDANCE WITH LONG-ESTABLISHED NORTH AMERICAN CUSTOM, UNLESS IT IS SPECIFICALLY STATED OTHERWISE GOLD AND SILVER VALUES REPORTED ON THESE SHEETS HAVE NOT BEEN ADJUSTED TO COMPENSATE FOR LOSSES AND GAINS INHERENT IN THE FIRE ASSAY PROCESS.



# BELL-WHITE ANALYTICAL LABORATORIES LTD.

P.O. BOX 187.

HAILEYBURY, ONTARIO

TEL: 672-3107

## Certificate of Analysis

NO. 8854

DATE: July 27, 1978.

SAMPLE(S) OF: Rock(9)

RECEIVED: July 27/78.

SAMPLE(S) FROM: Dr. R. A. Hales, Manitou Lake Gold Mines.

<u>Sample No.</u>	<u>Oz. Gold</u>
No tag	0.02
914-915*	0.215
916	0.15
917	0.02
918	0.105
919	0.22
920	0.775
921	0.97
922	0.08

\* Two tags in this sample.

IN ACCORDANCE WITH LONG-ESTABLISHED NORTH AMERICAN CUSTOM, UNLESS IT IS SPECIFICALLY STATED OTHERWISE GOLD AND SILVER VALUES REPORTED ON THESE SHEETS HAVE NOT BEEN ADJUSTED TO COMPENSATE FOR LOSSES AND GAINS INHERENT IN THE FIRE ASSAY PROCESS.

BELL-WHITE ANALYTICAL LABORATORIES LTD.

PER 



# BELL-WHITE ANALYTICAL LABORATORIES LTD.

P.O. BOX 187,

HAILEYBURY, ONTARIO

TEL: 672-3107

## Certificate of Analysis

NO. 9330

DATE: August 8, 1978.

SAMPLE(S) OF: Core(3)

RECEIVED: August 8/78.

SAMPLE(S) FROM: Mr. A. Eyberg, Manitou Lake Gold Mines.

<u>Sample No.</u>	<u>Oz. Gold</u>
4076	0.005
4077	0.005
4078	0.015

IN ACCORDANCE WITH LONG-ESTABLISHED NORTH AMERICAN CUSTOM, UNLESS IT IS SPECIFICALLY STATED OTHERWISE GOLD AND SILVER VALUES REPORTED ON THESE SHEETS HAVE NOT BEEN ADJUSTED TO COMPENSATE FOR LOSSES AND GAINS INHERENT IN THE FIRE ASSAY PROCESS.

BELL-WHITE ANALYTICAL LABORATORIES LTD.

Per 





# BELL-WHITE ANALYTICAL LABORATORIES LTD.

P.O. BOX 187

HAILEYBURY, ONTARIO

TEL: 672-3107

## Certificate of Analysis

NO. 2972

DATE: August 14, 1978.

SAMPLE(S) OF: Core(6)

RECEIVED: August 14/78.

SAMPLE(S) FROM: Mr. A. Byberg, Manitou Lake Gold Mines.

<u>Sample No.</u>	<u>Oz. Gold</u>
D4079	0.035
D4080	0.005
D4081	Trace
D4082	0.005
D4083	0.005
D4084	0.005

IN ACCORDANCE WITH LONG-ESTABLISHED NORTH AMERICAN CUSTOM, UNLESS IT IS SPECIFICALLY STATED OTHERWISE GOLD AND SILVER VALUES REPORTED ON THESE SHEETS HAVE NOT BEEN ADJUSTED TO COMPENSATE FOR LOSSES AND GAINS INHERENT IN THE FIRE ASSAY PROCESS.

BELL-WHITE ANALYTICAL LABORATORIES LTD.

PER 



# BELL-WHITE ANALYTICAL LABORATORIES LTD.

P.O. BOX 187.

HAILEYBURY, ONTARIO

TEL: 872-3107

## Certificate of Analysis

NO. 13410

DATE: October 30, 1978.

SAMPLE(S) OF: Core(2)

RECEIVED: October 30/78.

SAMPLE(S) FROM: Mr. A. Byberg, Manitou Lake Gold Mines.

<u>Sample No.</u>	<u>Oz. Gold</u>
D4086	0.01
D4087	Trace

IN ACCORDANCE WITH LONG-ESTABLISHED NORTH AMERICAN CUSTOM, UNLESS IT IS SPECIFICALLY STATED OTHERWISE GOLD AND SILVER VALUES REPORTED ON THESE SHEETS HAVE NOT BEEN ADJUSTED TO COMPENSATE FOR LOSSES AND GAINS INHERENT IN THE FIRE ASSAY PROCESS.

BELL-WHITE ANALYTICAL LABORATORIES LTD.

PER 



# BELL-WHITE ANALYTICAL LABORATORIES LTD.

P.O. BOX 187.

HAILEYBURY, ONTARIO

TEL: 672-3107

## Certificate of Analysis

NO. 13821

DATE: November 6, 1978.

SAMPLE(S) OF: Core(1)

RECEIVED: November 6/78.

SAMPLE(S) FROM: Mr. A. Byberg, Manitou Lake Gold Mines.

Sample No.

Oz. Gold

D4088

Trace

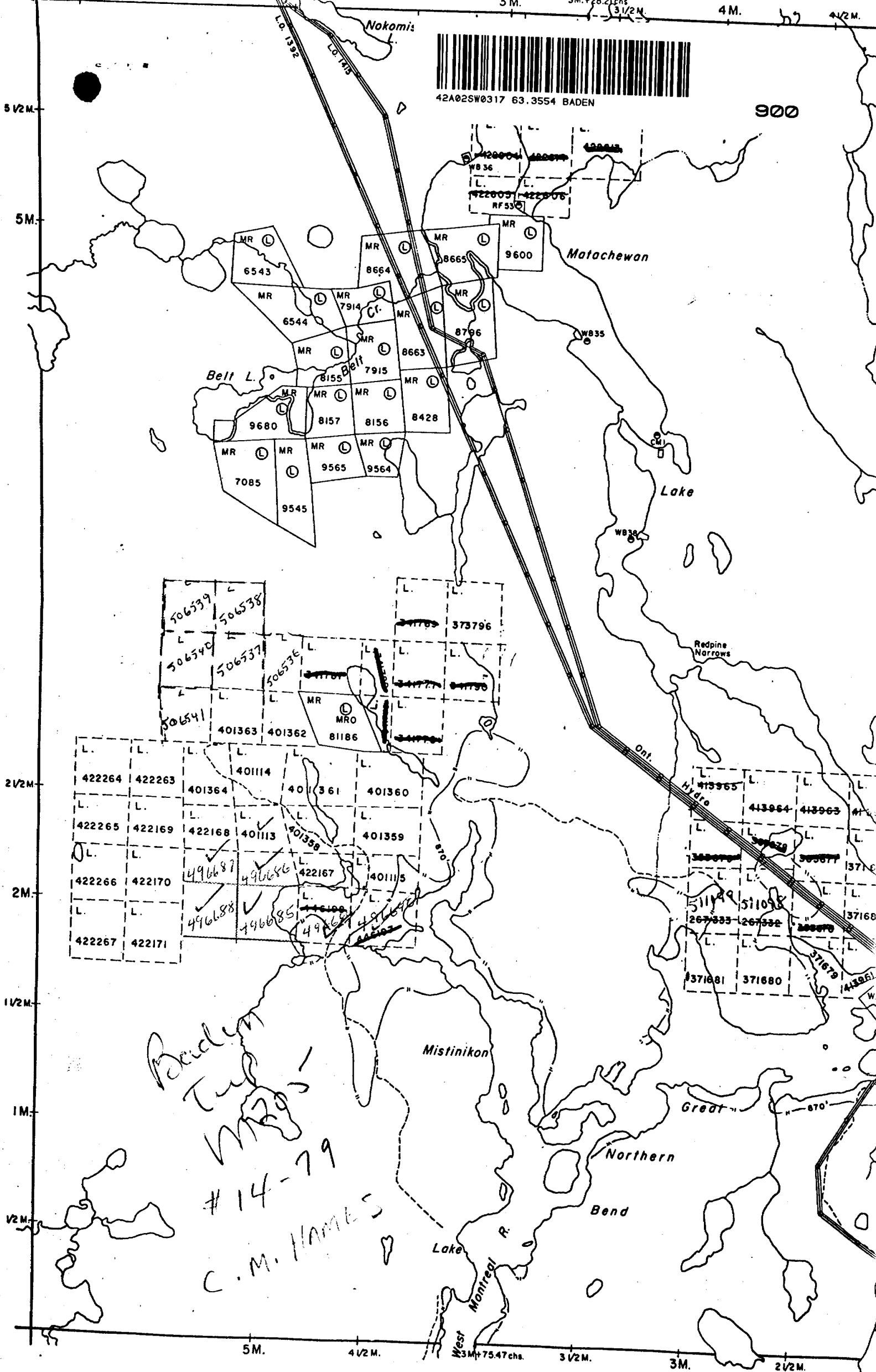
IN ACCORDANCE WITH LONG-ESTABLISHED NORTH AMERICAN CUSTOM, UNLESS IT IS SPECIFICALLY STATED OTHERWISE GOLD AND SILVER VALUES REPORTED ON THESE SHEETS HAVE NOT BEEN ADJUSTED TO COMPENSATE FOR LOSSES AND GAINS INHERENT IN THE FIRE ASSAY PROCESS.

BELL-WHITE ANALYTICAL LABORATORIES LTD.

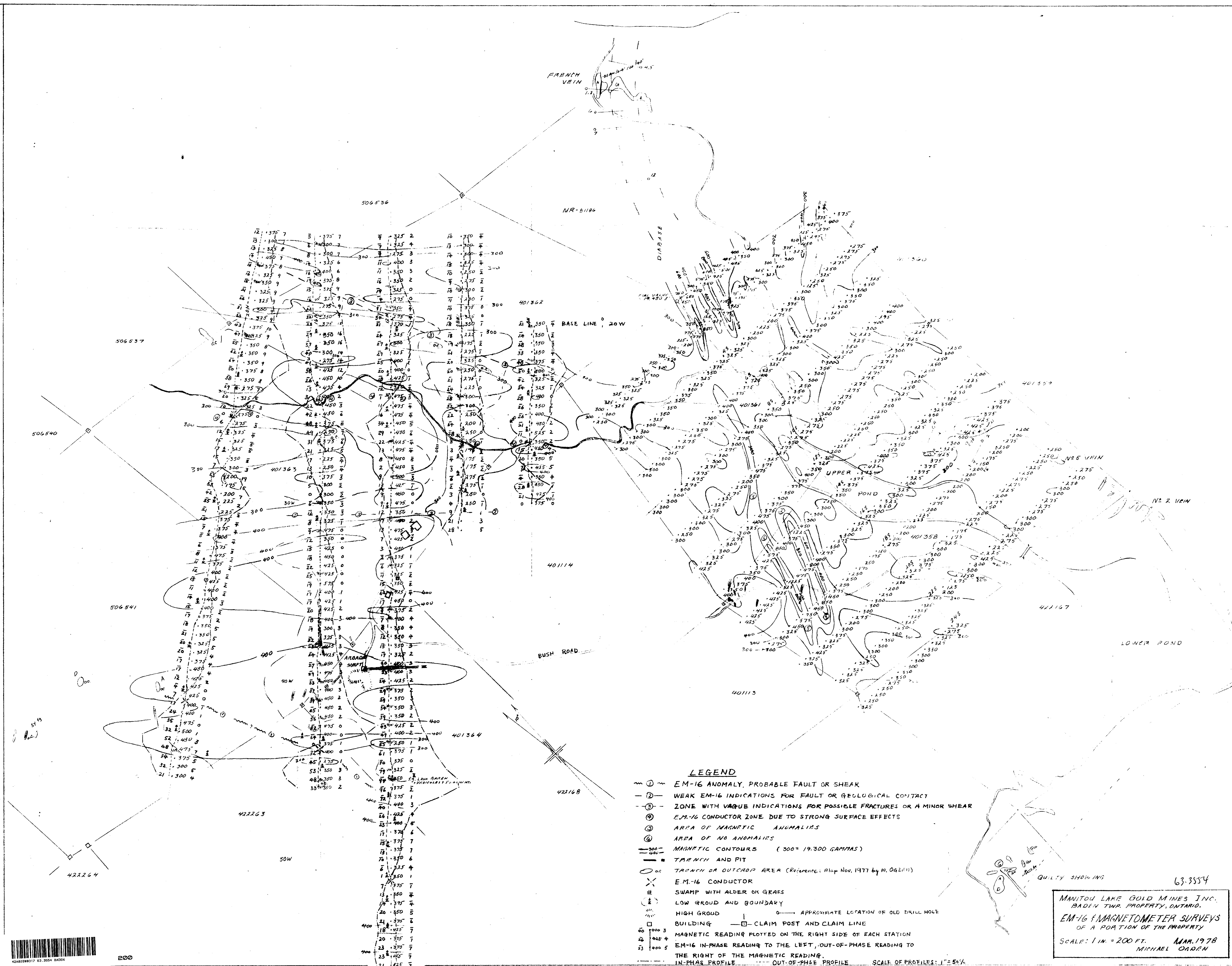
PER 



42A02SW0317 63.3554 BADEN



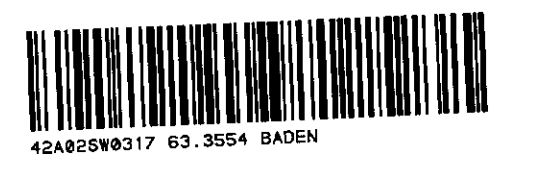
Baden Twp. M.241 #14-79 C.M. HAMPS



**LEGEND**

- ① EM-16 ANOMALY, PROBABLE FAULT OR SHEAR
- ② WEAK EM-16 INDICATIONS FOR FAULT OR GEOLOGICAL CONTACT
- ③ ZONE WITH VAGUE INDICATIONS FOR POSSIBLE FRACTURES OR A MINOR SHEAR
- ④ EM-16 CONDUCTOR ZONE DUE TO STRONG SURFACE EFFECTS
- ⑤ AREA OF MAGNETIC ANOMALIES
- ⑥ AREA OF NO ANOMALIES
- MAGNETIC CONTOURS (300 = 19,300 GAMMAS)
- TRENCH AND PIT
- TRENCH OR OUTCROP AREA (Reference: Map Nov. 1977 by M. OGDEN)
- EM-16 CONDUCTOR
- SWAMP WITH ALDER OR GRASS
- LOW GROUND AND BOUNDARY
- HIGH GROUND
- APPROXIMATE LOCATION OF OLD DRILL HOLE
- BUILDING
- CLAIM POST AND CLAIM LINE
- MAGNETIC READING PLOTTED ON THE RIGHT SIDE OF EACH STATION
- EM-16 IN-PHASE READING TO THE LEFT, OUT-OF-PHASE READING TO THE RIGHT OF THE MAGNETIC READING.
- IN-PHASE PROFILE --- OUT-OF-PHASE PROFILE

63-3554  
 MANITOU LAKE GOLD MINES INC.  
 BADEN TWP. PROPERTY, ONTARIO.  
 EM-16 MAGNETOMETER SURVEYS  
 OF A PORTION OF THE PROPERTY  
 SCALE: 1 IN. = 200 FT. MAR. 1978  
 MICHAEL OGDEN



200

old post  
 P-2-215530

633534



506536

506537

506540

AREA OF  
SAND HILLS AND  
RED DIRT

506541

401363

401114

401114

401360

401361

422169

401359

496687

496686

401115

496685

422167

496689

SCALE 1 INCH = 200 FEET

MANITOU LAKE GOLD MINES INC.  
BADEN TOWNSHIP - COLORADO  
**GEOLOGICAL PLAN**  
EAST PORTION OF CLAIM GROUP

- VEGETATION**
- ↑ MATURE SPRUCE - GOLD BUSSIN
  - ↑ FLAT DAMP - SCRUB SPRUCE
  - ↑ CEDAR OR WET SPRUCE SWAMP
  - ↑ TAG FLODER
  - ↑ OPEN GRASS LAND
- LEGEND**
- G DIABASE
  - S STENITE
  - F FELSITE
  - A-D VOLCANICS, UNDIFFERENTIATED = VOLC.
  - DRILL HOLES



REPORT ON 1978 EXPLORATION PROGRAM

MANITOU LAKE GOLD MINES INC.

BADEN TOWNSHIP PROPERTY

The company holds a group of 32 mining claims in Baden Township, Larder Lake Mining Division, Ontario, numbered as follows:-

L.401113 to 401115 inclusive  
L.401358 to 401364 inclusive  
L.422167 to 422171 inclusive  
L.422263 to 422267 inclusive  
L.496685 to 496690 inclusive  
L.506536 to 506541 inclusive

During 1976 and 1977 twenty-one diamond drill holes with a total length of 4,759' were put down on claims 401358, 401115 and 401361 to explore (1) a northwesterly-trending zone of gold-bearing fractures which had been partially explored in 1937 by Fondewa Gold Mines Ltd., and (2) the Ronda diabase dyke, a northeasterly-trending structure with which gold-bearing veins are associated on neighbouring claim MR 81186.

This work did not disclose gold deposits of probable economic importance and the 1978 program was devoted to preliminary exploration of other areas on this large property.

The first area to be considered was the northwesterly-trending drift-filled valley on claims 401361, 401362 and 401363. This valley contains the possible extension of the Fondewa gold-bearing zone, and is parallel to the belt of syenite dykes which had been partially explored in the 1930's on claim 401364 (Arbade zone). An E.M. and magnetic survey was done in this area in March 1978 by S.S. Szetu and Michael Ogden. This work gave the following indications:

- (1) An E.M. conductor similar to those found over shear zones or fault systems some 500 feet southwest of the Arbade shaft.



- (2) A weak indication of a possible fracture zone on the northeastern edge of the syenite dyke swarm which contains the Arbade zone.
- (3) A vague zone lying to the north of the creek on the largely drift-covered valley on claim 401362.

After further study of the ground it was decided to explore areas (2) and (3) by drill holes, for possible shear zones or fractured syenite dykes. The first three holes of the 1978 program numbered 22, 23 and 26, with a total length of 953 feet were drilled in this area; holes 24 and 25 were lost in overburden. The holes intersected a monotonous succession of andesitic lavas and pyroclastics with no shear zones or syenite dykes. The holes did not reach the north edge of the syenite dyke swarm.

Hole 27 and 28 (total length 187 feet) were designed to explore the Ronda dyke in an area where it was quite highly magnetic, and which is some 600 feet south of previous drilling. No gold-bearing quartz was intersected.

The final hole of the program (No. 29) was drilled under a showing of gold-bearing veinlets (stock work) on claim 496885. Nothing of interest was encountered.

Total footage drilled in 1978 was 1341.



R. A. Halet

November 30, 1978



# DIAMOND DRILL LOG

**PROPERTY:** MANITOU LAKE GOLD MINES INC. **HOLE NUMBER:** 28  
**LOCATION:** Baden Township, Larder Lake Mining Division, Ontario **DIP TESTS**  
 Claim No. 401358  
**XXXXXXXXX** Dip: 45° **Footage** **Reading** **Corrected**  
**XXXXXXXXX** Depth: 120 feet  
**XXXXXXXXX** 300' south and 240' east of #4 Post **Drilled:** R.M. Ferguson  
Matachewan, Ont.  
**XXXXXXXXX** Commenced: August 7, 1978  
**Azimuth:** 90° astronomic **Finished:** August 14, 1978 **Logged by:** R. A. Halet

SAMPLE NUMBER	DESCRIPTION				
	0.0 - 2.2	Casing			
	2.2 - 12.0	Feldspar porphyry, greenish and pinkish			
	12.0 - 28.0	Greenstone, vague banding.			
	28.0 - 30.0	Porphyritic, pink and green.			
	30.0 - 45.2	Greenstone as above.			
	45.2 - 58.3	Massive, pink and grey, very fine grained, stringers of quartz with chalcopryite.			
	58.3 - 69.0	Greenstone, massive, core much broken.			
	69.0 - 107.0	Syenite(?), massive, not porphyritic, very fine grained, bright pink and green sections alternate, considerable epidote. No core 79 - 80 - cemented.			
	107.0 - 120.0	Diabase, sharp contact, fine grained near contact, medium grained dark rock otherwise.			
<b><u>SAMPLE RECORD</u></b>					
	<u>From</u>	<u>To</u>	<u>Length</u>	<u>Material</u>	<u>Gold - Oz/Ton</u>
4079	32.3	32.4	0.1	Quartz	0.035
4080	42.8	43.7	0.9	Syenite	0.005
4081	48.1	48.2	0.1	Quartz - little chalco.	Tr.
4082	52.8	53.7	0.9	Syenite & quartz	0.005
4083	57.8	58.5	0.7	" "	0.005
4084	50.9	51.8	0.9	" "	0.005
4085	104.0	105.1	1.1	" "	Tr.

*R. A. Halet*

# Post  
401358

480'

450'

401364  
401358

401358  
422167

MANITOU LAKE GOLD MINES INC  
BADEN TOWNSHIP, ONT  
PLAN OF CLAIM L 401358

1 INCH = 200 FT.

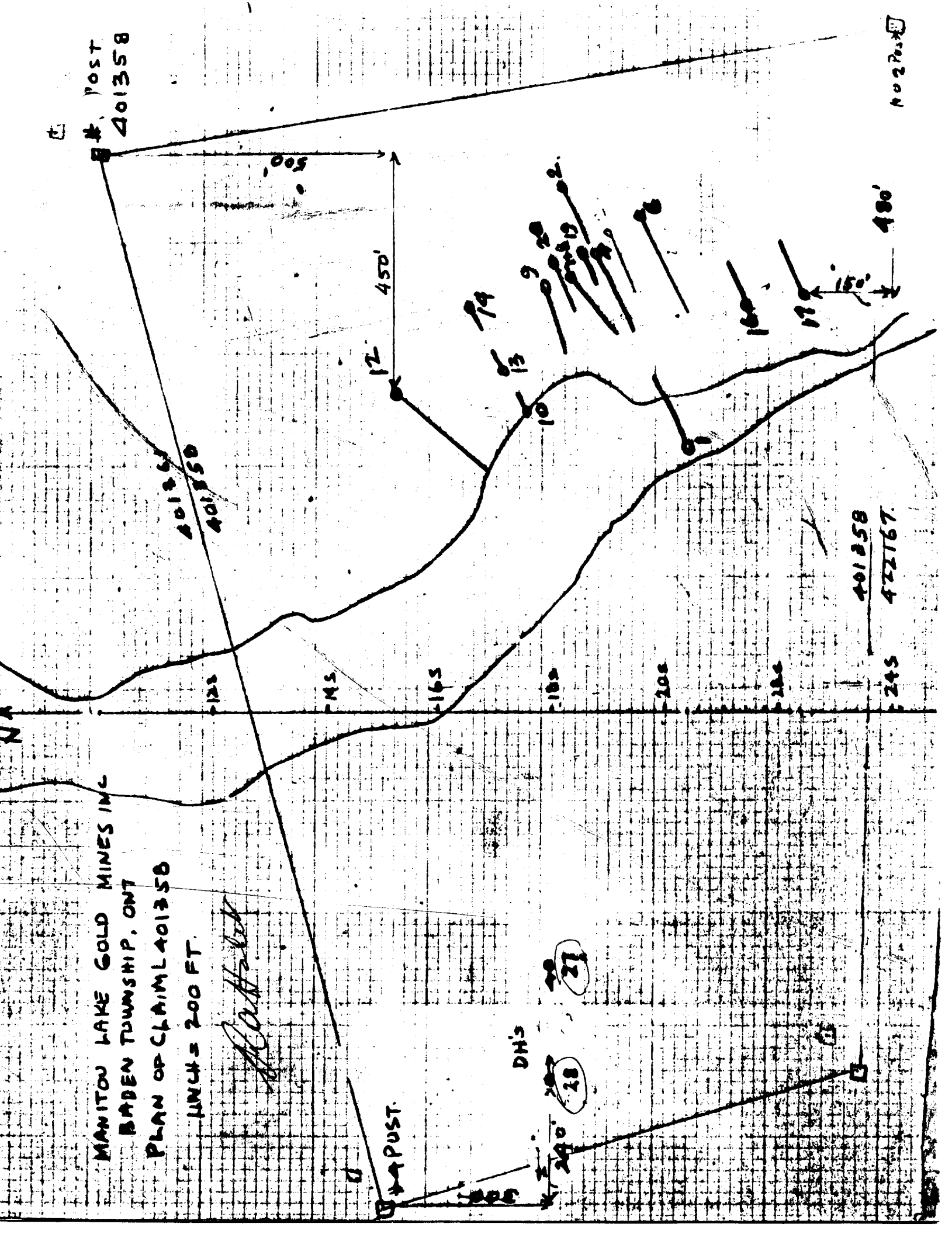
*Handwritten signature*

Post

DHS


28

27



# DIAMOND DRILL LOG

**PROPERTY:** MANITOU LAKE GOLD MINES INC. **HOLE NUMBER:** 22  
**LOCATION:** Manitou Lake - Baden Twp. **DIP TESTS**  
 Claim #401362  
**Latitude:** 480' south of #1 Post **Dip:** 45° **Footage** **Reading** **Corrected**  
**Longitude:** 760' west of #1 Post **Depth:** 294 ft.  
**Direction:** **Commenced:** May 30, 1978  
**Azimuth:** 72° **Finished:** June 14, 1978 **Logged by:** R. A. Halet

SAMPLE NUMBER	DESCRIPTION	SAMPLE LENGTH	GOLD ASSAY
	0.0 - 1.6 Casing		
	1.6 - 92.6 Grey andesitic lava, massive, soft, fine-grained, occasional fragments of rhyolite up to one inch. Porphyritic in places with light and dark phenocrysts up to 0.1 inch.		
	92.6 - 101.4 Diabase - green-grey, massive, medium-grained, finer grained towards edges.		
	101.4 - 232.0 Grey andesite as above		
4102	213 - 215.6 Quartz stringer nearly parallel to core with abundant pyrite in near massive aggregates up to 3 inches long Sample 213.3 - 213.9	0.6'	0.005
4103	232 - 267.6 Breccia of dark angular fragments up to 1/2 inch in matrix which appears to be quartz and carbonate, very fine disseminate pyrite - looks like a tectonic breccia, some sections unbrecciated and some rhyolite fragments preserved. Sample 250 - 250.5 and 255 - 256	1.5'	Tr.
	267.6 - 294 Grey andesite as above.		
	294 End of hole.		
<b>NOTES:</b> Open fracture at 47 - cemented. Bad cave at 87 - cemented. Lost water at 294 - cemented. Hole stopped.			
			

# DIAMOND DRILL LOG

**PROPERTY:** MANITOU LAKE GOLD MINES INC. **HOLE NUMBER:** 23  
**LOCATION:** Manitou Lake - Baden Twp. **DIP TESTS**  
 Claim 401362  
**Coordinates:** Same location as Hole 22. **Dip:** 45° **Footage** **Reading** **Corrected**  
**Depth:** 347 ft.  
**Elevation:** **Commenced:** June 14, 1978  
**Azimuth:** 152° **Finished:** June 19, 1978 **Logged by:** R. A. Halet

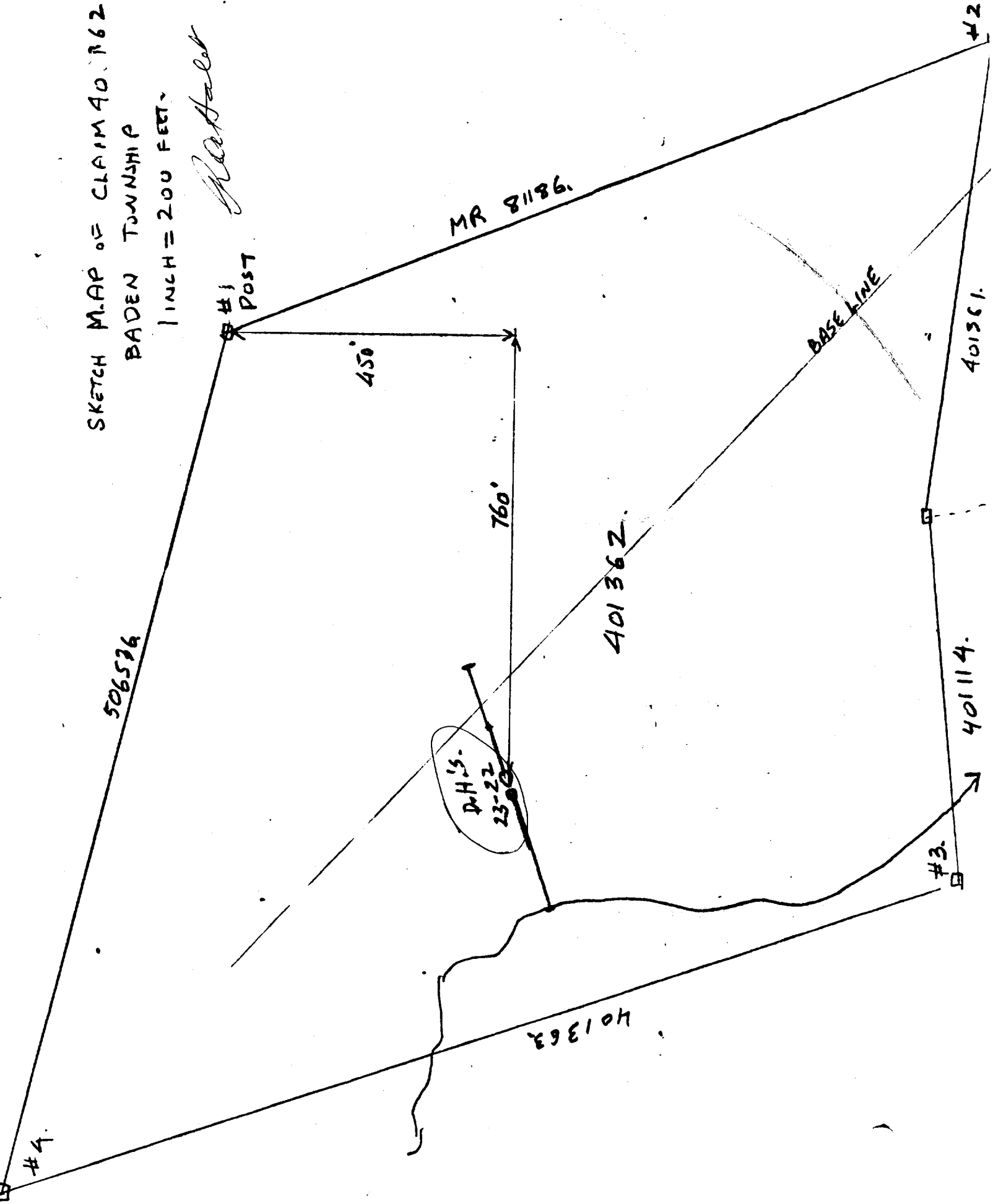
SAMPLE NUMBER	DESCRIPTION	Sample Length	Gold Assay
	0.0 - 1.0 Casing		
4101	1.0 - 99.3 Volcanic breccia, rhyolitic fragments in andesitic matrix, somewhat schistose, chloritized and carbonated, gradually gets less schistose and harder. 84 - 84.6 Quartz vein	0.6'	Tr.
	99.3 - 108.1 Diabase		
	108.1 - 160.0 Volcanic breccia as above, numerous small quartz calcite stringers.		
	160.0 - 347.0 Volcanic breccia, rhyolite fragments get larger below 250 (one is 12 inches diameter at 280) Last foot banded tuff. Cemented hole at 337.		
	347 End of hole.		

*R. A. Halet*

SKETCH MAP OF CLAIM 40. R62  
BADEN TOWNSHIP

1 INCH = 200 FEET

*W. A. H. S. L.*



# DIAMOND DRILL LOG

PROPERTY: MANITOU LAKE GOLD MINES INC.

HOLE NUMBER: 24

LOCATION: Manitou Lake - Baden Twp.  
Claim 401363

DIP TESTS

~~Coordinates~~ 580' west and  
~~Deposits~~ 150' north of  
~~Remarks~~ #2 Post

Dip: 45°  
Depth: 37 ft.

Footage      Reading      Corrected

~~Remarks~~ Commenced: June 25, 1978

Azimuth: Finished: June 28, 1978

Logged by: R. A. Halet

SAMPLE NUMBER	DESCRIPTION		
	0 - 37 Glacial drift - large boulders - abandoned.		

*R. A. Halet*

# DIAMOND DRILL LOG

PROPERTY: MANITOU LAKE GOLD MINES INC.

HOLE NUMBER: 25

LOCATION: Manitou Lake - Baden Twp.

DIP TESTS

~~XXXXXXXX~~

Same as Hole  
No. 24.

Dip: 49°

Footage

Reading

Corrected

~~XXXXXXXX~~

Depth: 16 ft.

~~XXXXXXXX~~

Commenced: June 28, 1978

Azimuth:

Finished: June 29, 1978

Logged by: R. A. Halet

SAMPLE NUMBER	DESCRIPTION		
	0 - 16 Glacial drift and boulders - abandoned.		

*R. A. Halet*

# DIAMOND DRILL LOG

(Holes #24 & #25  
abandoned in overburden)

PR. ATY: MANITOU LAKE GOLD MINES INC.

HOLE NUMBER: 26

LOCATION: Manitou Lake - Baden Twp.  
Claim 401363

DIP TESTS

~~XXXXXXXXXX~~ 80' north and Dip: Footage Reading Corrected  
~~XXXXXXXXXX~~ 680' west of Depth: 312 ft.  
~~XXXXXXXXXX~~ #2 Post

Commenced: June 29, 1978

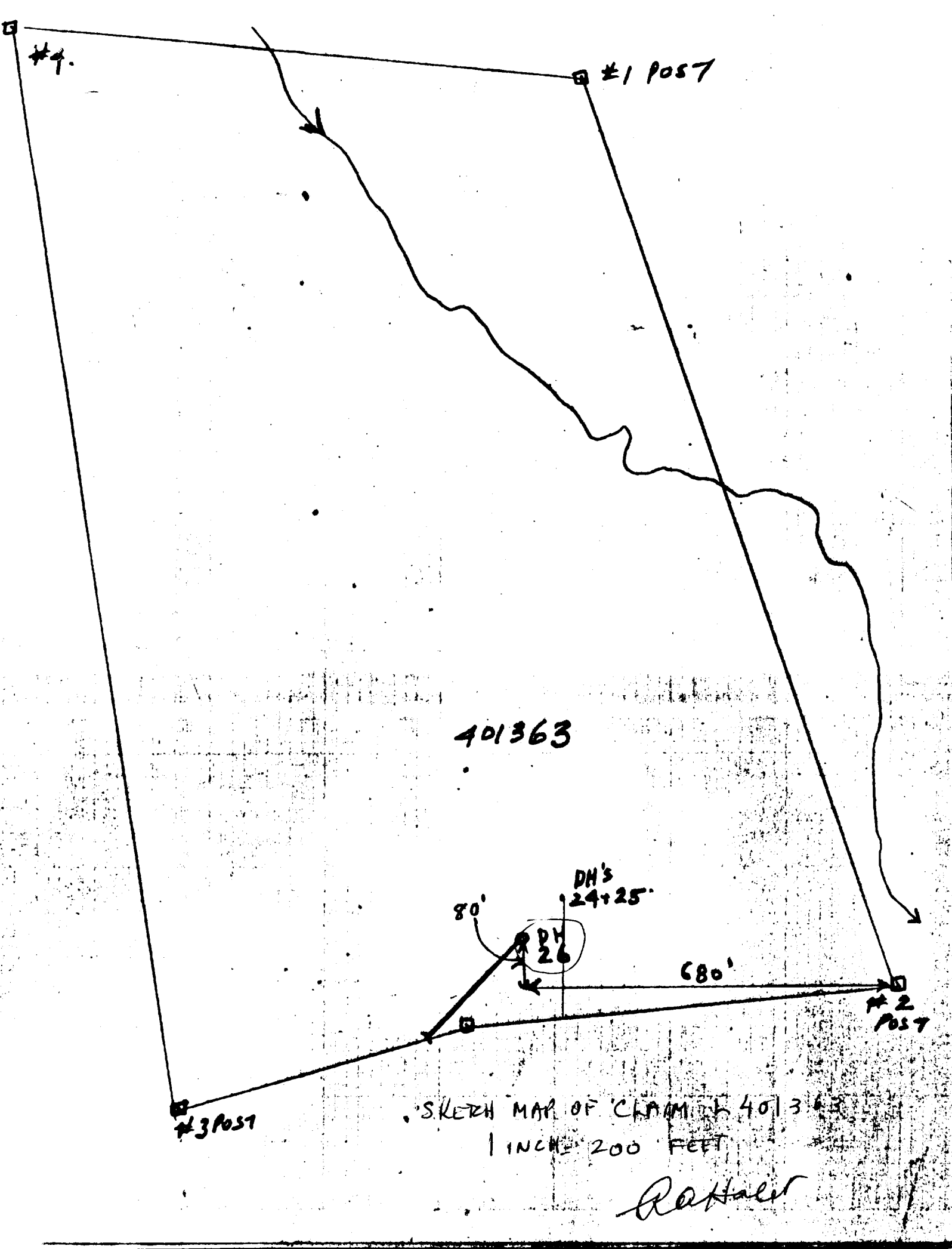
Azimuth:

Finished: July 12, 1978

Logged by: R. A. Halet

SAMPLE NUMBER	DESCRIPTION		
0 - 37	Casing (much trouble - 4 shifts)		
37 - 312	Volcanic breccia - rhyolite fragments in andesitic matrix - slightly schistose & carbonated.		
312	End of hole.		
	Cave at 213 - cemented		
	Cave at 275 - sand seam		
	<i>R. A. Halet</i>		





#4.

#1 POST

401363

80°  
DH'S  
24+25'

DH  
26

680'

#2  
POST

#3 POST

SKETCH MAP OF CLAIM # 401363  
1 INCH = 200 FEET

R. Haller

# DIAMOND DRILL LOG

PROPERTY: MANITOU LAKE GOLD MINES INC.


HOLE NUMBER: 27

LOCATION: Baden Township, Larder Lake Mining Division, Ontario  
Claim No. 401358

DIP TESTS

<del>WONKUCHX</del>	300' south and	Dip: 45°	Footage	Reading	Corrected
<del>DEKCKXKX</del>	335' east of #4 Post	Depth: 67 feet			

<del>EDKCKXKX</del>	Commenced: August 2, 1978	Driller: R.M. Ferguson Matachewan, Ont.
Azimuth: 270° astronomic	Finished: August 4, 1978	Logged by: R. A. Halet

SAMPLE NUMBER	DESCRIPTION																						
	0.0 - 8.0 Casing																						
	8.0 - 24.0 Grey, massive, fine grained, slightly porphyritic (syenite?) some epidote in fractures, some pink alteration.																						
	24.0 - 26.8 No core.																						
	26.8 - 49.5 Syenite as above, massive, mostly red in various shades, some minor fractures with chlorite.																						
	49.5 - 51.6 Strongly altered, yellowish green.																						
	51.6 - 58.0 Syenite as above.																						
	58.0 - 67.0 Diabase, fine grain near contact.																						
<u>SAMPLE RECORD</u>																							
	<table border="0" style="width: 100%; border-collapse: collapse;"> <thead> <tr> <th style="width: 15%;"><u>From</u></th> <th style="width: 15%;"><u>To</u></th> <th style="width: 15%;"><u>Length</u></th> <th style="width: 30%;"><u>Material</u></th> <th style="width: 25%;"><u>Gold - Oz/Ton</u></th> </tr> </thead> <tbody> <tr> <td>4076</td> <td>43.2</td> <td>44.2</td> <td>1.0 Syenite with stringers</td> <td>0.005</td> </tr> <tr> <td>4077</td> <td>54.0</td> <td>55.0</td> <td>1.0 Syenite, some pyrite</td> <td>0.005</td> </tr> <tr> <td>4078</td> <td>49.5</td> <td>50.0</td> <td>0.5 Epidote, some qtz.</td> <td>0.015</td> </tr> </tbody> </table>	<u>From</u>	<u>To</u>	<u>Length</u>	<u>Material</u>	<u>Gold - Oz/Ton</u>	4076	43.2	44.2	1.0 Syenite with stringers	0.005	4077	54.0	55.0	1.0 Syenite, some pyrite	0.005	4078	49.5	50.0	0.5 Epidote, some qtz.	0.015		
<u>From</u>	<u>To</u>	<u>Length</u>	<u>Material</u>	<u>Gold - Oz/Ton</u>																			
4076	43.2	44.2	1.0 Syenite with stringers	0.005																			
4077	54.0	55.0	1.0 Syenite, some pyrite	0.005																			
4078	49.5	50.0	0.5 Epidote, some qtz.	0.015																			
																							

# DIAMOND DRILL LOG

PROPERTY: MANITOU LAKE GOLD MINES INC.

HOLE NUMBER: 29


LOCATION: Baden Township, Larder Lake Mining Division, Ontario  
Claim No. 496685

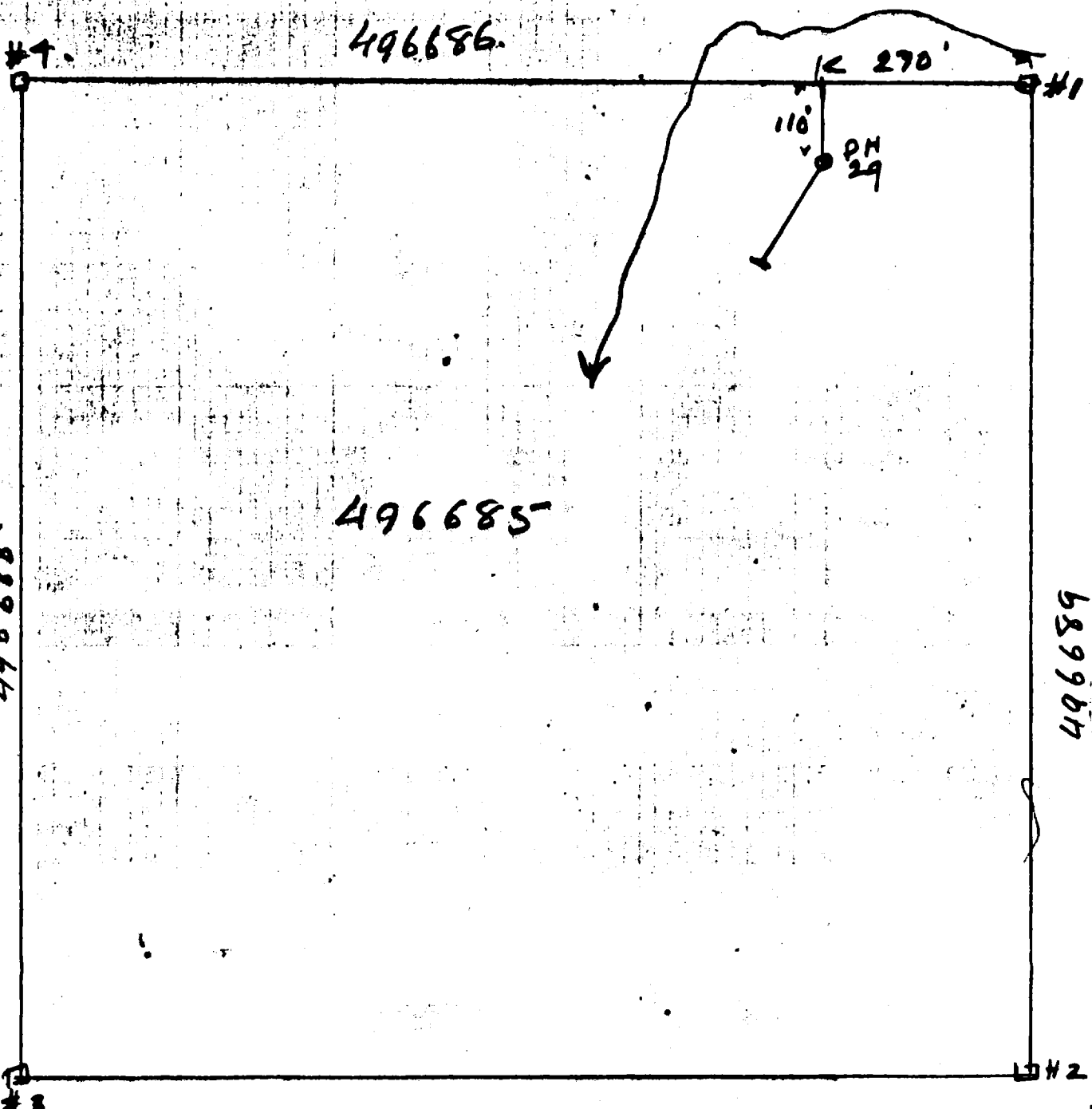
DIP TESTS

~~XXXXXXXX~~ 110' south and Dip: 50° Footage Reading Corrected  
~~XXXXXXXX~~ 270' west of #1 Depth: 201 feet Driller: R. M. Ferguson  
Post Matachewan, Ont.

~~XXXXXXXX~~ Commenced: October 25, 1978

Azimuth: 135° astronomic Finished: November 7, 1978 Logged by: A. Byberg and R. A. Halet

SAMPLE NUMBER	DESCRIPTION		
	0.0 - 30.0 Casing		
	30.0 - 120.4 Andesite - grey, porphyritic in places. 50 - 54.1 Quartz stock-work.		
	120.4 - 123.4 Diabase? Some calcite stringers.		
	123.4 - 161.0 Andesite as above.		
	161.0 - 163.0 Schistose, with quartz calcite stringers.		
	163.0 - 169.3 Diabase? Numerous calcite stringers.		
	169.3 - 176.2 Andesite gray, porphyritic.		
	176.2 - 201.0 Greenstone, coarser grained, some sections carbonated, calcite stringers in places.		
<u>SAMPLE RECORD</u>			
	<u>From</u> <u>To</u> <u>Length</u> <u>Material</u> <u>Gold Oz/Ton</u>		
4086	50    54.1    4.1    Quartz stock-work		0.01
4087	54.1    57.5    3.4    Wall rock		Tr.
4088	161    163    2.0    Quartz & schist		Tr.
			



SKETCH MAP OF CLAIM A 496685  
BADEN TOWNSHIP.

1 INCH = 200 FEET.

*R. H. Hales*



# BELL-WHITE ANALYTICAL LABORATORIES LTD.

P.O. BOX 187.

HAILEYBURY, ONTARIO

TEL: 672-3107

## Certificate of Analysis

NO. 7129

DATE: June 19, 1978.

SAMPLE(S) OF: Core(1)

RECEIVED: June 19/78.

SAMPLE(S) FROM: Mr. A. Byberg, Manitou Lake Gold Mines.

Sample No.

Oz. Gold

D4101

Trace

IN ACCORDANCE WITH LONG-ESTABLISHED NORTH AMERICAN CUSTOM, UNLESS IT IS SPECIFICALLY STATED OTHERWISE GOLD AND SILVER VALUES REPORTED ON THESE SHEETS HAVE NOT BEEN ADJUSTED TO COMPENSATE FOR LOSSES AND GAINS INHERENT IN THE FIRE ASSAY PROCESS.

BELL-WHITE ANALYTICAL LABORATORIES LTD.

PR





**BELL - WHITE ANALYTICAL LABORATORIES LTD.**

P.O. BOX 187.

HAILEYBURY, ONTARIO

TEL: 672-9107

## Certificate of Analysis

NO. 7237

DATE: June 20, 1978.

SAMPLE(S) OF: Core(2)

RECEIVED: June 20/78.

SAMPLE(S) FROM: Mr. A. Byberg, Manitou Lake Gold Mines.

<u>Sample No.</u>	<u>Oz. Gold</u>
D4102	0.005
D4103	Trace

IN ACCORDANCE WITH LONG-ESTABLISHED NORTH AMERICAN CUSTOM, UNLESS IT IS SPECIFICALLY STATED OTHERWISE GOLD AND SILVER VALUES REPORTED ON THESE SHEETS HAVE NOT BEEN ADJUSTED TO COMPENSATE FOR LOSSES AND GAINS INHERENT IN THE FIRE ASSAY PROCESS.

BELL-WHITE ANALYTICAL LABORATORIES LTD.

PER 



# BELL - WHITE ANALYTICAL LABORATORIES LTD.

P.O. BOX 187.

HAILEYBURY, ONTARIO

TEL: 672-3107

## Certificate of Analysis

NO. 8082

DATE: July 10, 1978.

SAMPLE(S) OF: Core(3) Rock(1)

RECEIVED: July 10/78.

SAMPLE(S) FROM: A. Byberg, Esq., Manitou Lake Gold Mines.

<u>Sample No.</u>	<u>Oz. Gold</u>
D4069	Trace
D4070	Trace
D4071	0.38 - boulder
D4072	0.005

IN ACCORDANCE WITH LONG-ESTABLISHED NORTH AMERICAN CUSTOM, UNLESS IT IS SPECIFICALLY STATED OTHERWISE GOLD AND SILVER VALUES REPORTED ON THESE SHEETS HAVE NOT BEEN ADJUSTED TO COMPENSATE FOR LOSSES AND GAINS INHERENT IN THE FIRE ASSAY PROCESS.

BELL-WHITE ANALYTICAL LABORATORIES LTD.

PER



# BELL-WHITE ANALYTICAL LABORATORIES LTD.

P.O. BOX 187.

HAILEYBURY, ONTARIO

TEL: 672-3107

## Certificate of Analysis

NO. 8316

DATE: July 13, 1978.

SAMPLE(S) OF: Rock(3)

RECEIVED: July 13/78.

SAMPLE(S) FROM: Mr. A. Byberg, Manitou Lake Gold Mines.

<u>Sample No.</u>	<u>Oz. Gold</u>
D4073	0.115
4	0.13
5	0.005

*PURITY*

IN ACCORDANCE WITH LONG-ESTABLISHED NORTH AMERICAN CUSTOM, UNLESS IT IS SPECIFICALLY STATED OTHERWISE GOLD AND SILVER VALUES REPORTED ON THESE SHEETS HAVE NOT BEEN ADJUSTED TO COMPENSATE FOR LOSSES AND GAINS INHERENT IN THE FIRE ASSAY PROCESS.

BELL-WHITE ANALYTICAL LABORATORIES LTD.

PER 





# BELL-WHITE ANALYTICAL LABORATORIES LTD.

P.O. BOX 187.

HAILEYBURY, ONTARIO

TEL: 672-3107

## Certificate of Analysis

NO. 8854

DATE: July 27, 1978.

SAMPLE(S) OF: Rock(9)

RECEIVED: July 27/78.

SAMPLE(S) FROM: Dr. R. A. Halet, Manitou Lake Gold Mines.

<u>Sample No.</u>	<u>Oz. Gold</u>
No tag	0.02
914-915*	0.215
916	0.15
917	0.02
918	0.105
919	0.22
920	0.775
921	0.97
922	0.08

\* Two tags in this sample.

IN ACCORDANCE WITH LONG-ESTABLISHED NORTH AMERICAN CUSTOM, UNLESS IT IS SPECIFICALLY STATED OTHERWISE GOLD AND SILVER VALUES REPORTED ON THESE SHEETS HAVE NOT BEEN ADJUSTED TO COMPENSATE FOR LOSSES AND GAINS INHERENT IN THE FIRE ASSAY PROCESS.

BELL-WHITE ANALYTICAL LABORATORIES LTD.

PER



# BELL-WHITE ANALYTICAL LABORATORIES LTD.

P.O. BOX 187.

HAILEYBURY, ONTARIO

TEL: 672-3107

## Certificate of Analysis

NO. 9330

DATE: August 8, 1978.

SAMPLE(S) OF: Core(3)

RECEIVED: August 8/78.

SAMPLE(S) FROM: Mr. A. Byberg, Manitou Lake Gold Mines.

<u>Sample No.</u>	<u>Oz. Gold</u>
4076	0.005
4077	0.005
4078	0.015

IN ACCORDANCE WITH LONG-ESTABLISHED NORTH AMERICAN CUSTOM, UNLESS IT IS SPECIFICALLY STATED OTHERWISE GOLD AND SILVER VALUES REPORTED ON THESE SHEETS HAVE NOT BEEN ADJUSTED TO COMPENSATE FOR LOSSES AND GAINS INHERENT IN THE FIRE ASSAY PROCESS.

BELL-WHITE ANALYTICAL LABORATORIES LTD.

PER 



# BELL-WHITE ANALYTICAL LABORATORIES LTD.

P.O. BOX 137.

HAILEYBURY, ONTARIO

TEL: 672-3107

## Certificate of Analysis

NO. 2972

DATE: August 14, 1978.

SAMPLE(S) OF: Core(6)

RECEIVED: August 14/78.

SAMPLE(S) FROM: Mr. A. Byberg, Manitou Lake Gold Mines.

<u>Sample No.</u>	<u>Oz. Gold</u>
D4079	0.035
D4080	0.005
D4081	Trace
D4082	0.005
D4083	0.005
D4084	0.005

IN ACCORDANCE WITH LONG-ESTABLISHED NORTH AMERICAN CUSTOM, UNLESS IT IS SPECIFICALLY STATED OTHERWISE GOLD AND SILVER VALUES REPORTED ON THESE SHEETS HAVE NOT BEEN ADJUSTED TO COMPENSATE FOR LOSSES AND GAINS INHERENT IN THE FIRE ASSAY PROCESS.

BELL-WHITE ANALYTICAL LABORATORIES LTD.

PER 



# BELL-WHITE ANALYTICAL LABORATORIES LTD.

P.O. BOX 187.

HAILEYBURY, ONTARIO

TEL: 672-3107

## Certificate of Analysis

NO. 13410

DATE: October 30, 1978.

SAMPLE(S) OF: Core(2)

RECEIVED: October 30/78.

SAMPLE(S) FROM: Mr. A. Byberg, Manitou Lake Gold Mines.

<u>Sample No.</u>	<u>Oz. Gold</u>
D4086	0.01
D4087	Trace

IN ACCORDANCE WITH LONG-ESTABLISHED NORTH AMERICAN CUSTOM, UNLESS IT IS SPECIFICALLY STATED OTHERWISE GOLD AND SILVER VALUES REPORTED ON THESE SHEETS HAVE NOT BEEN ADJUSTED TO COMPENSATE FOR LOSSES AND GAINS INHERENT IN THE FIRE ASSAY PROCESS.

BELL-WHITE ANALYTICAL LABORATORIES LTD.

PER 



# BELL-WHITE ANALYTICAL LABORATORIES LTD.

P.O. BOX 187.

HAILEYBURY, ONTARIO

TEL: 672-3107

## Certificate of Analysis

NO. 13821

DATE: November 6, 1978.

SAMPLE(S) OF: Core(1)

RECEIVED: November 6/78.

SAMPLE(S) FROM: Mr. A. Byberg, Manitou Lake Gold Mines.

Sample No.

Oz. Gold

D4088

Trace

IN ACCORDANCE WITH LONG-ESTABLISHED NORTH AMERICAN CUSTOM, UNLESS IT IS SPECIFICALLY STATED OTHERWISE GOLD AND SILVER VALUES REPORTED ON THESE SHEETS HAVE NOT BEEN ADJUSTED TO COMPENSATE FOR LOSSES AND GAINS INHERENT IN THE FIRE ASSAY PROCESS.

BELL-WHITE ANALYTICAL LABORATORIES LTD.

PER 