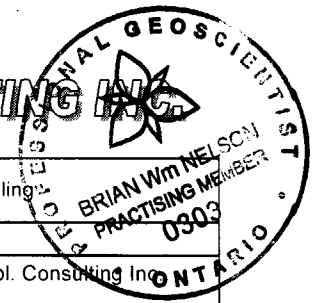


DIAMOND DRILL CORE LOGGING SHEETS

RECEIVED
 OCT 08 2004
 GEOSCIENCE ASSESSMENT
 OFFICE

CLARK EXPL. CONSULTING INC.



PROPERTY: Solano	LOCATION: Matachewan	CLAIM NUMBER: 1241851	DOWNHOLE SURVEY:
HOLE NO.: 5-1-04	LENGTH: 248.0 m	CORE SIZE: BQ	DEPTH DIP DEPTH DIP
PROJECT NUMBER:	NORTHING:	EASTING:	DRILLING COMPANY: Norex Drilling
ELEVATION: 0	UTM northing: 5324142	UTM easting: 0514829	DATE LOGGED: October 5, 2004
COLLAR ORIENTATION (AZIMUTH / DIP); PLANNED: 180° / -60°			SURVEYED:
EXPLORATION CO., OWNER OR OPTIONEE: Novawest Resources Inc.			LOGGED: Brian Nelson, Clark Expl. Consulting Inc.
HOLE STARTED: Sept 23/2004	HOLE FINISHED: Sept 30/2004	DECLINATION:	SIGNATURE:
			SHEET 1 OF 7

METERAGE		ROCK TYPE	DESCRIPTION	SAMPLES			ASSAYS	
FROM	TO			No.	FROM	TO	LENGTH	Au ppb
0.00	9.00	Overburden						
9.00	203.55	Granite (Granitoid)	Coarse-grained to very coarse-grained, slightly pinkish-greenish buff to locally light greenish buff to locally moderately syenitic red, non-magnetic, weakly defined porphyritic texture defined by large 5mm to 2cm scale irregular shaped amphibole clots (crystals) set in a medium-grained light greenish to locally reddish feldspar rich groundmass, overall unit is a texturally homogenous very coarse-grained granitoid with minor medium-grained and sheared sub-sections, overall minor to locally moderate grey to white quartz veinlets, overall weak to moderate matrix epidote, trace to minor to locally pyrite, overall unit is moderately altered to hematite and epidote, locally alteration is strong to intense, host granitoid is cut by numerous non-magnetic 5cm to 3 to 5meter fine-grained slightly brownish-grey, fine-grained to finer-grained massive, frequently mafic (amphibole) pyric mafic dykes.					
			13.90 - 15.50: Strong yellow limonite staining, blocky-broken core, locally sheared, minor quartz veining, granitoid host exhibits a ghostly mottled texture.	320751	14.00	15.50	1.50	
			15.50 - 17.00: Ghostly mottled texture, granite appears altered gradational contact into downhole coarse-grained granite.					
			24.20 - 26.30: Medium-grained to coarse-grained, reddish, altered, local white quartz veining, local minor limonite, reddish colouration either due to feldspar composition, increase in sodic feldspar composition or hematite alteration?	320752	23.00	24.20	1.20	
				320753	24.20	26.00	1.80	
			29.65 - 30.10: Mafic Dyke, fine-grained, medium-grey, moderate calcite stringers/bands parallel moderate foliation @ 80° to core axis, non-magnetic sharp upper contact @ 70° to core axis sharp lower contact @ 60° to core axis	320754	30.10	31.40	1.30	

42A02SM2020 2.28570



ARGYLE

010

DIAMOND DRILL CORE LOGGING SHEETS

LOGGED BY: Brian Nelson, Clark Expl. Consulting Inc.

SIGNATURE

PROPERTY

Solano

HOLE # 5-1-04

METERAGE		ROCK TYPE	DESCRIPTION	SAMPLES			ASSAYS	
FROM	TO			No.	FROM	TO	LENGTH	Au ppb
			31.40 - 31.60: Intensely broken and fractured core-> drill induced?					
			32.45 - 33.20: Intense yellow limonite staining, moderate to weakly fractured core	320755	33.50	35.00	1.50	
			35.05 - 36.65: Mafic dyke, fine-grained to finer medium-grained, grey, massive to locally sheared at lower contact @ 70° to core axis, weak stringer calcite, weakly amphibole phyrlic, no sulphides, sharp upper contact @ 70° to core axis, sharp irregular lower contact @ 45° to core axis					
			36.65 - 37.45: Granitic xenolith, coarse-grained, syenite red in colour, weak quartz, calcite stringers and veinlets					
			37.45 - 37.60: Breccia - fault/contact breccia, strong yellow limonite staining, strong limonite staining to 37.75					
			38.30 - 39.20: 30% patchy yellow limonite staining on a 5 to 20cm scale					
			38.5 - 40.85: Mafic dyke, fine-grained, grey, massive weakly amphibole phyrlic, 2 to 5% 1 to 2mm scale dark green amphibole crystals set in fine-grained matrix, no sulphides sharp lower contact @ 90° to core axis					
			40.20 - 40.40: Xenolith of coarse-grained granitoid	320756	45.50	47.00	1.50	
			48.05 - 51.00: Mafic dyke, fine-grained to finer medium-grained, grey, non-magnetic, weakly to moderately amphibole phyrlic -> 1 to 5%, 1 to 5mm scale dark green amphibole crystals and clots strongly sheared @ 30° to core axis as approach lower contact, weak to locally moderate quartz-carbonate stringers - brecciated lower contact					
				320757	50.00	51.00	1.00	
			51.00 - 54.00: Moderate to strong red colouration -> locally almost looks syenite, possibly hematite staining	320758	51.00	52.50	1.50	

DIAMOND DRILL CORE LOGGING SHEETS

CLARK EXPL. CONSULTING INC.

LOGGED BY: Brian Nelson, Clark Expl. Consulting Inc

SIGNATURE

PROPERTY

Solano

HOLE # 5-1-04

METERAGE		ROCK TYPE	DESCRIPTION	SAMPLES			ASSAYS		
FROM	TO			No.	FROM	TO	LENGTH	Au ppb	Au ppm
			54.00 - 76.95: Massive very coarse-grained equigranular granitoid, moderate to strong epidote alteration of feldspar, local patchy to veiny epidote, 3 to 5% white-grey quartz calcite stringers predominately oriented at high angles to core axis, trace to minor fine-grained to medium-grained disseminated pyrite	320759	56.00	57.50	1.50		
				320760	59.00	60.50	1.50		
				320761	65.00	66.50	1.50		
				320762	71.00	72.50	1.50		
			76.95 - 78.20: Shear breccia - light buff green to grey-white, altered shear brecciated quartz veining plus intensely altered granite?, shearing @ 30° to core axis, diffuse upper and lower contacts @ 30° to core axis grade into shear-foliated granite at high angle to core axis to massive very coarse-grained granite	320763	75.50	76.95	1.45		
				320764	76.95	78.20	1.25		
				320765	78.20	80.00	1.80		
				320766	80.00	81.50	1.50		
				320767	81.50	82.80	1.30		
			82.00 - 82.80: Moderate green-red colouration, epidote and hematite/alkali feldspar?	320768	82.80	84.00	1.20		
				320769	84.00	85.50	1.50		
			82.80 - 83.40: Altered granitoid - ghostly mottled texture, pinkish-red, grading downhole into intense yellow limonite downhole through sub-sections, moderate white quartz-carbonate veining associated with strong limonite staining	320770	85.50	86.70	1.20		
				320771	86.70	88.20	1.50		
			84.00 - 86.70: Intensely altered granitoid, pinkish-grey to reddish-grey, patchy-ghostly relict coarse-grained granitoid texture, moderate to strong hematite alteration or alkali feldspar? (not sure); moderate erratic quartz and quartz calcite stringers and veinlets, very local limonite staining, minor fine-grained to very fine-grained disseminated pyrite, diffuse upper and lower contacts						
			86.70 - 88.55: Strong red colouration of feldspar						
			88.55 - 92.30: Mafic dyke, grey, fine-grained, massive, non-magnetic, 2 to 3% erratic quartz-carbonate stringers and veinlets, a strong orangey-yellow alteration -> possibly Iron carbonate.						

DIAMOND DRILL CORE LOGGING SHEETS

LOGGED BY: Brian Nelson, Clark Expl. Consulting Inc

SIGNATURE _____

PROPERTY _____

Solano _____

HOLE # 5-1-04 _____

METERAGE		ROCK TYPE	DESCRIPTION	SAMPLES				ASSAYS	
FROM	TO			No.	FROM	TO	LENGTH	Au ppb	Au ppm
			sharp upper contact @ 40° to core axis						
			sharp lower contact @ 70° to core axis						
			92.30 - 93.80: Moderate green-pink (epidote and hematite) altered granite, trace to minor fine-grained disseminated pyrite.	320772	92.30	94.00	1.70		
			96.80 - 105.60: Altered granite, light pinkish-grey, medium-grained to coarse-grained, exhibits a ghostly-mottled appearance, patchy alteration has partially to almost completely destroyed amphibole crystals/clots, moderate to strong hematite and epidote, local strong yellow-brown bands of limonite on a 2cm to 40cm scale mark relatively narrow brecciated and veined zones, trace to minor fine-grained disseminated pyrite	320773	97.00	98.50	1.50		
				320777	98.50	100.00	1.50		
				320775	100.00	101.60	1.60		
				320776	101.60	103.00	1.40		
				320777	103.00	104.00	1.00		
				320778	104.00	105.60	1.60		
			100.40 - 100.90: Breccia and quartz veining, strong limonite						
			at 101.00 - 3cm of strong rusty limonite staining						
			at 101.25 - 2cm of strong rusty limonite						
			101.40 - 101.60: Brecciated and quartz stringers - intense rusty Iron (limonite) staining						
			104.05 - 104.15: Strong iron staining						
			104.35 - 104.70: Brecciated and quartz stringers, strong yellow to orange limonite staining						
			105.60 - 107.70: Mafic/Intermediate dyke - fine-grained to locally finer medium-grained, grey, non-magnetic, central portion contains up to 40% anhedral grey feldspar crystals, almost looks like a dirty feldspar porphyry, no sulphides						
			sharp irregular upper contact at 60° to core axis marked by finely laminated very fine-grained creamy feldspar	320779	110.00	111.50	1.50		
				320780	BLANK				
			sharp lower contacts at 20° to core axis						

DIAMOND DRILL CORE LOGGING SHEETS



LOGGED BY: Brian Nelson, Clark Expl. Consulting Inc

SIGNATURE

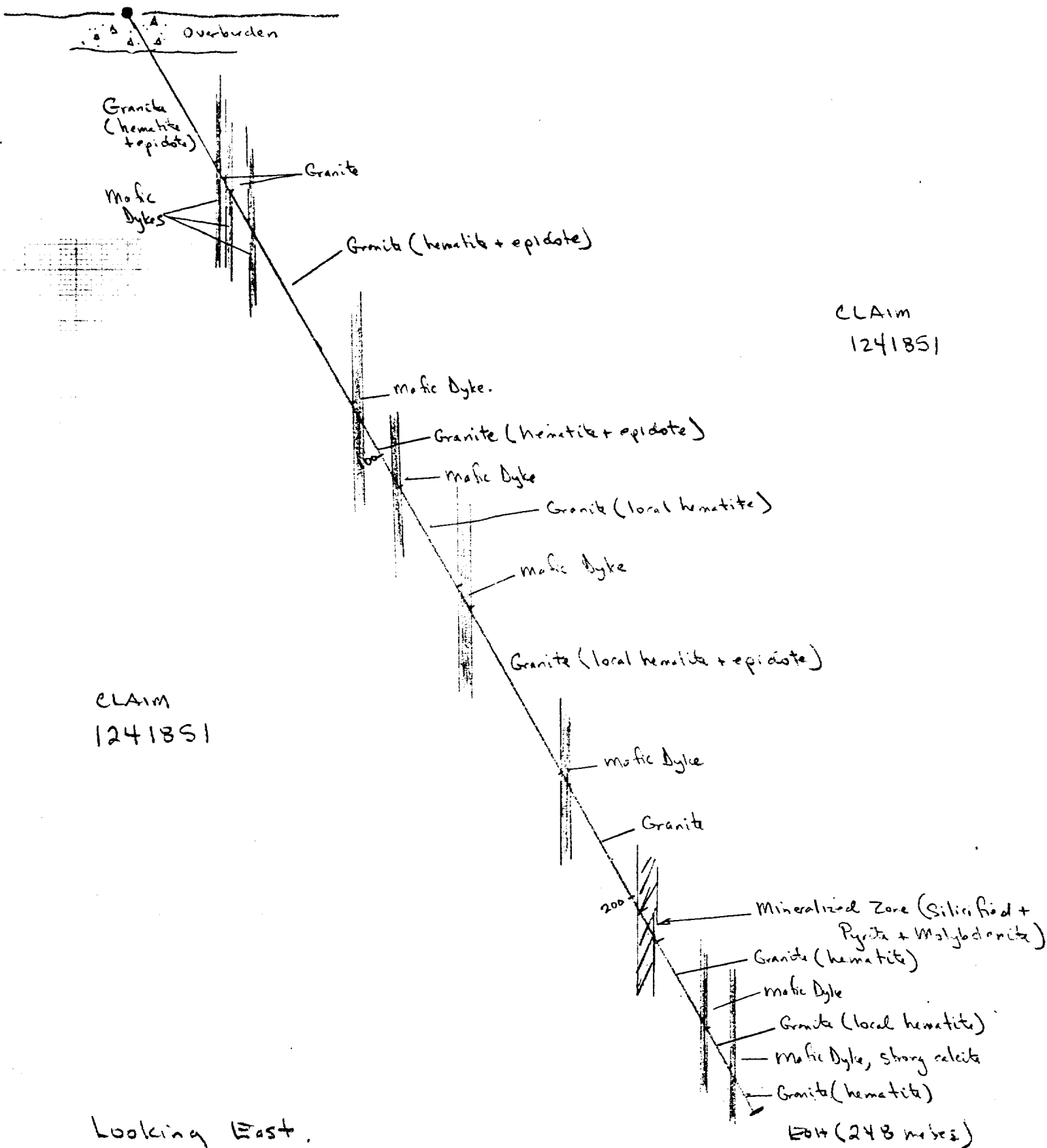
PROPERTY

Solano

HOLE # 5-1-04

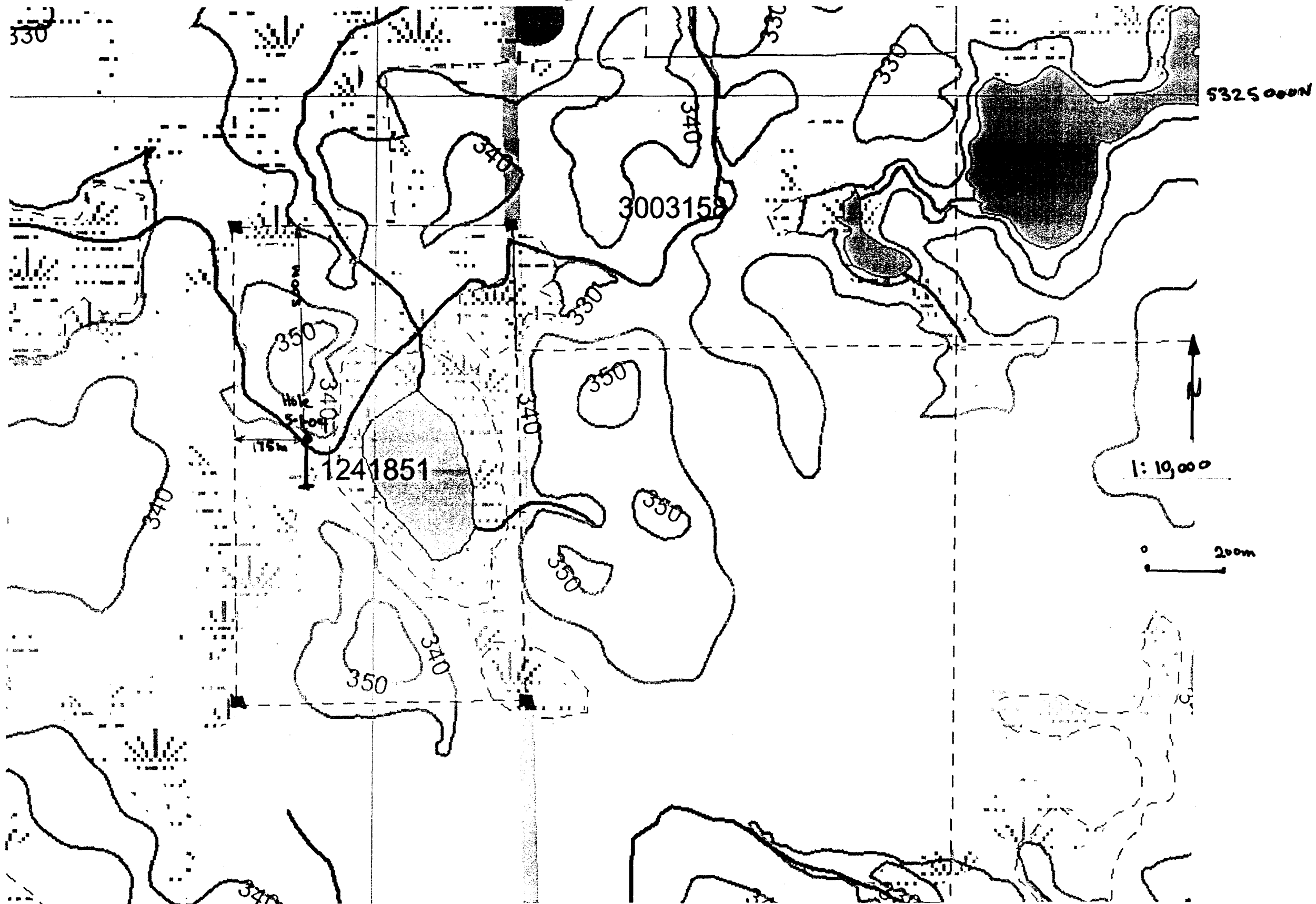
METERAGE		ROCK TYPE	DESCRIPTION	SAMPLES				ASSAYS	
FROM	TO			No.	FROM	TO	LENGTH	Au ppb	Au ppm
203.55	210.05	Mineralized Zone	174.00 - 174.45: Diorite Dyke, medium-grained, creamy-grey, foliated @ 60° to core axis	320793	174.45	176.00	1.55		
			irregular lower contact	320794	176.00	177.50	1.50		
				320795	177.50	179.00	1.50		
			174.45 - 179.90: altered granite moderate to strong hematite, minor to locally 1% fine-grained	320796	179.00	179.90	0.90		
			to medium-grained disseminated pyrite.						
				320797	186.50	188.00	1.50		
			185.00 - 189.00: Weakly to moderately to locally strongly altered granite, minor fine-grained						
			disseminated pyrite	320798	199.00	200.50	1.50		
				320799	200.50	202.00	1.50		
				320800	202.00	203.55	1.55		
210.05	248.00 End of Hole	Granite (Granitoid)	Intensely altered and mineralized unit, medium to dark greenish-grey, medium-grained to coarse-grained, non-magnetic, locally exhibits a crude brecciated texture, strong grey matrix silicification, moderate to strong sericite, strong matrix calcite, overall 5% erratic white-grey quartz calcite stringers and veinlets, local hint of light brown sphalerite associated with quartz veining, overall minor to 0.5% disseminated fine-grained to medium-grained molybdenite, overall 2 to 3% fine-grained to medium-grained disseminated pyrite, locally up to 5% pyrite over 10 to 25cm, locally core exhibits a bluish-molybdenite like colouration-> first molybdenite estimates may be low, may have 1 - 2% very fine-grained molybdenite disseminated throughout.						
			Mineralized zone (altered zone) protolith unknown -> intensely altered silicified-carbonitized granite?						
			upper contact at 60° to core axis and marked by 1cm scale mineralized quartz veinlets						
			Gradational/diffuse lower contact	320808	210.05	211.50	1.45		
				320809	211.50	213.00	1.50		
			Coarse-grained to very coarse-grained, pinkish to reddish to greenish buff-grey, massive, relatively equigranular, non-magnetic, strong red colouration due to either hematite alteration or alkali feldspar component, 5% erratic quartz-calcite stringers and veinlets overall minor to locally 1% disseminated	320810	Blank				
			fine-grained to medium-grained pyrite over 10 to 25cm	210811	213.00	214.30	1.30		
			Unit same as section from 9.00 to 203.55 meters	320812	214.30	215.50	1.70		
				320813	215.50	217.00	1.50		
				320814	217.00	218.50	1.50		
				320815	218.50	220.00	1.50		
				320816	220.00	221.50	1.50		
				320817	221.90	223.00	1.10		

Drill Hole 5-1-04 (0514829E/5324142N) NAD 83
 (Azimuth 130° / Dip -60°)



S15000E

DRILL HOLE LOCATION MAP



S325000E

3003158

1241851

175m

1:10,000

200m

Date / Time of Issue: Wed Oct 06 09:40:28 EDT 2004

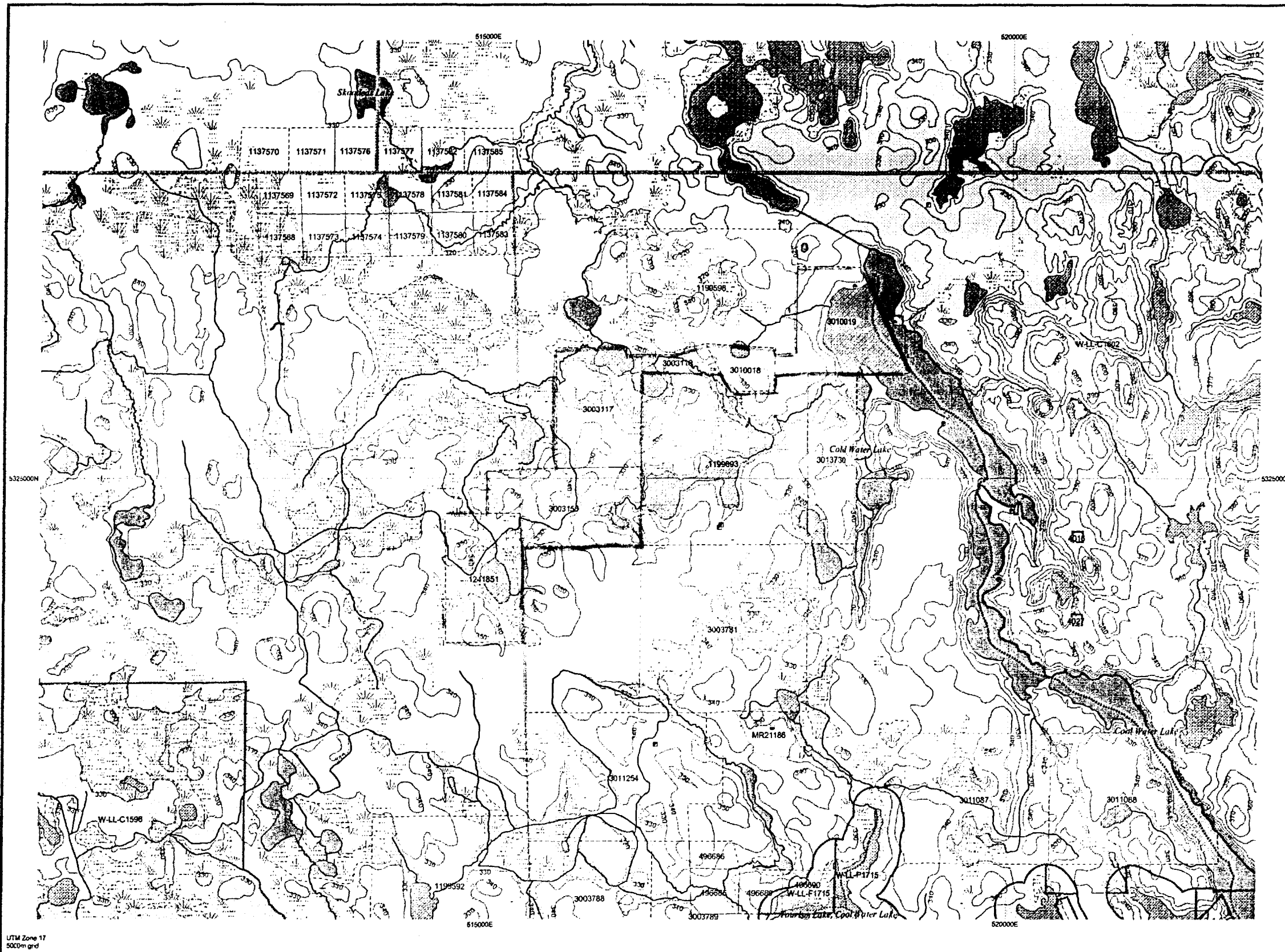
TOWNSHIP / AREA
BADEN

PLAN
M-0205

ADMINISTRATIVE DISTRICTS / DIVISIONS

Mining Division
Land Titles/Registry Division
Ministry of Natural Resources District

Larder Lake
TIMISKAMING
KIRKLAND LAKE



TOPOGRAPHIC

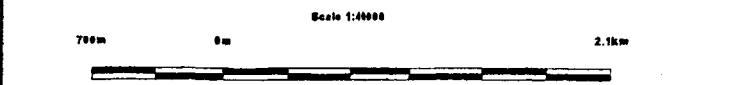
- Administrative Boundaries
- Township
- Concession Lot
- Province Park
- Indian Reserve
- CR, PA & Pte
- Contour
- Mine Shaft
- Mine Headframe
- Railway
- Road
- Trail
- Natural Gas Pipeline
- Utilities
- Tower

Land Tenure

- Freehold Patent**
 - Surface and Mining Rights
 - Surface Rights Only
 - Mining Rights Only
- Leasehold Patent**
 - Surface and Mining Rights
 - Surface Rights Only
 - Mining Rights Only
- Licence of Occupation**
 - Uses Not Specified
 - Surface and Mining Rights
 - Surface Rights Only
 - Mining Rights Only
 - Land Use Permit
 - Order in Council (Not open for staking)
 - Water Power Lease Agreement
- Mining Claim**
 - Mining Claim
 - Fied Only Mining Claims

LAND TENURE WITHDRAWALS

- Areas Withdrawn from Disposition
- Mining Acts Withdrawal Types**
 - Surface and Mining Rights Withdrawal
 - Surface Rights Only Withdrawal
 - Mining Rights Only Withdrawal
- Order in Council Withdrawal Types**
 - Surface and Mining Rights Withdrawal
 - Surface Rights Only Withdrawal
 - Mining Rights Only Withdrawal
- IMPORTANT NOTICES



LAND TENURE WITHDRAWAL DESCRIPTIONS

Identifier	Type	Date	Description
4016	Wsm	Jan 1, 2001	400 FT SURFACE RIGHTS RESERVATION ALONG THE SHORES OF ALL LAKES & RIVERS
4027	Wsm	Jan 1, 2001	FLOODING ELEVATION: 870 FILE: 12290 V.2 L.O. 7601
W-LL-C1596	Wsm	Feb 1, 2004	Boundary generally depicts area withdrawn Click to view actual area http://www.mndm.gov.on.ca/mndm/mineslands/ivleg/boresst/2004orders/feb/withdrawals/wc1596-04_e.asp
W-LL-C1602	Wsm	Feb 1, 2004	Boundary generally depicts area withdrawn Click to view actual area http://www.mndm.gov.on.ca/mndm/mineslands/ivleg/boresst/2004orders/feb/withdrawals/wc1602-04_e.asp
W-LL-F1602	Wsm	Feb 1, 2004	Boundary generally depicts area withdrawn Click to view actual area http://www.mndm.gov.on.ca/mndm/mineslands/ivleg/boresst/2004orders/feb/withdrawals/wf1602-04_e.asp
W-LL-F1715	Wsm	Feb 12, 2002	Boundary generally depicts area withdrawn Click to view actual area http://www.mndm.gov.on.ca/mndm/mineslands/ivleg/boresst/2002orders/wf1715-02_e.asp
W-LL-F1715	Wsm	Feb 12, 2002	Boundary generally depicts area withdrawn Click to view actual area http://www.mndm.gov.on.ca/mndm/mineslands/ivleg/boresst/2002orders/wf1715-02_e.asp
W-LL-F1715	Wsm	Feb 12, 2002	Boundary generally depicts area withdrawn Click to view actual area http://www.mndm.gov.on.ca/mndm/mineslands/ivleg/boresst/2002orders/wf1715-02_e.asp
W-LL-F1715	Wsm	Feb 12, 2002	Boundary generally depicts area withdrawn Click to view actual area http://www.mndm.gov.on.ca/mndm/mineslands/ivleg/boresst/2002orders/wf1715-02_e.asp

Those wishing to stake mining claims should consult with the Provincial Mining Recorders' Office of the Ministry of Northern Development and Mines for additional information on the status of the lands shown hereon. This map is not intended for navigational, survey, or land title determination purposes as the information shown on this map is compiled from various sources. Completeness and accuracy are not guaranteed. Additional information may also be obtained through the local Land Titles or Registry Office, or the Ministry of Natural Resources.

The information shown is derived from digital data available in the Provincial Mining Recorders' Office at the time of downloading from the Ministry of Northern Development and Mines web site.

General Information and Limitations
 Contact Information:
 Provincial Mining Recorders' Office
 Willet Green Miller Centre 933 Ramsey Lake Road
 Sudbury ON P3F 6R5
 Home Page: www.mndm.gov.on.ca/MNDM/MINESLANDS/mismpgpe.htm

Toll Free
 Tel: 1 (888) 415-3845 ext 5788
 Fax: 1 (877) 670-1444

Map Datum: NAD 83
 Projection: UTM (6 degree)
 Topographic Data Source: Land Information Ontario
 Mining Land Tenure Source: Provincial Mining Recorders' Office

This map may not show unregistered land tenure and interests in land including certain patents, leases, easements, right of ways, flooding rights, licences, or other forms of disposition of rights and interest from the Crown. Also certain land tenure and land uses that restrict or prohibit free entry to stake mining claims may not be illustrated.

Date: 2004-DEC-10

GEOSCIENCE ASSESSMENT OFFICE
933 RAMSEY LAKE ROAD, 6th FLOOR
SUDBURY, ONTARIO
P3E 6B5

NOVAWEST RESOURCES INC.
SUITE 1000, HTE MARINE BUILDING
355 BARRARD STREET
VANCOUVER, BRITISH COLUMBIA
V6C 2G8 CANADA

Tel: (888) 415-9845
Fax: (877) 670-1555

Submission Number: 2.28570
Transaction Number(s): W0480.01584

Dear Sir or Madam

Subject: Approval of Assessment Work

We have approved your Assessment Work Submission with the above noted Transaction Number(s). The attached Work Report Summary indicates the results of the approval.

At the discretion of the Ministry, the assessment work performed on the mining lands noted in this work report may be subject to inspection and/or investigation at any time.

If you have any question regarding this correspondence, please contact by email at bkite@vianet.on.ca or by phone at (705) 523-9972.

Yours Sincerely,



Ron C. Gashinski
Senior Manager, Mining Lands Section

Cc: Resident Geologist

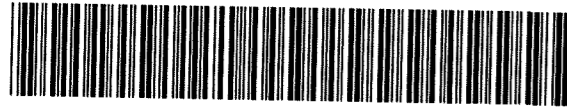
Jim Harold Forbes
(Claim Holder)

Novawest Resources Inc.
(Claim Holder)

Assessment File Library

Patrick Arthur Rosko
(Claim Holder)

Novawest Resources Inc.
(Assessment Office)



Date / Time of Issue: Fri Dec 10 15:16:27 EST 2004

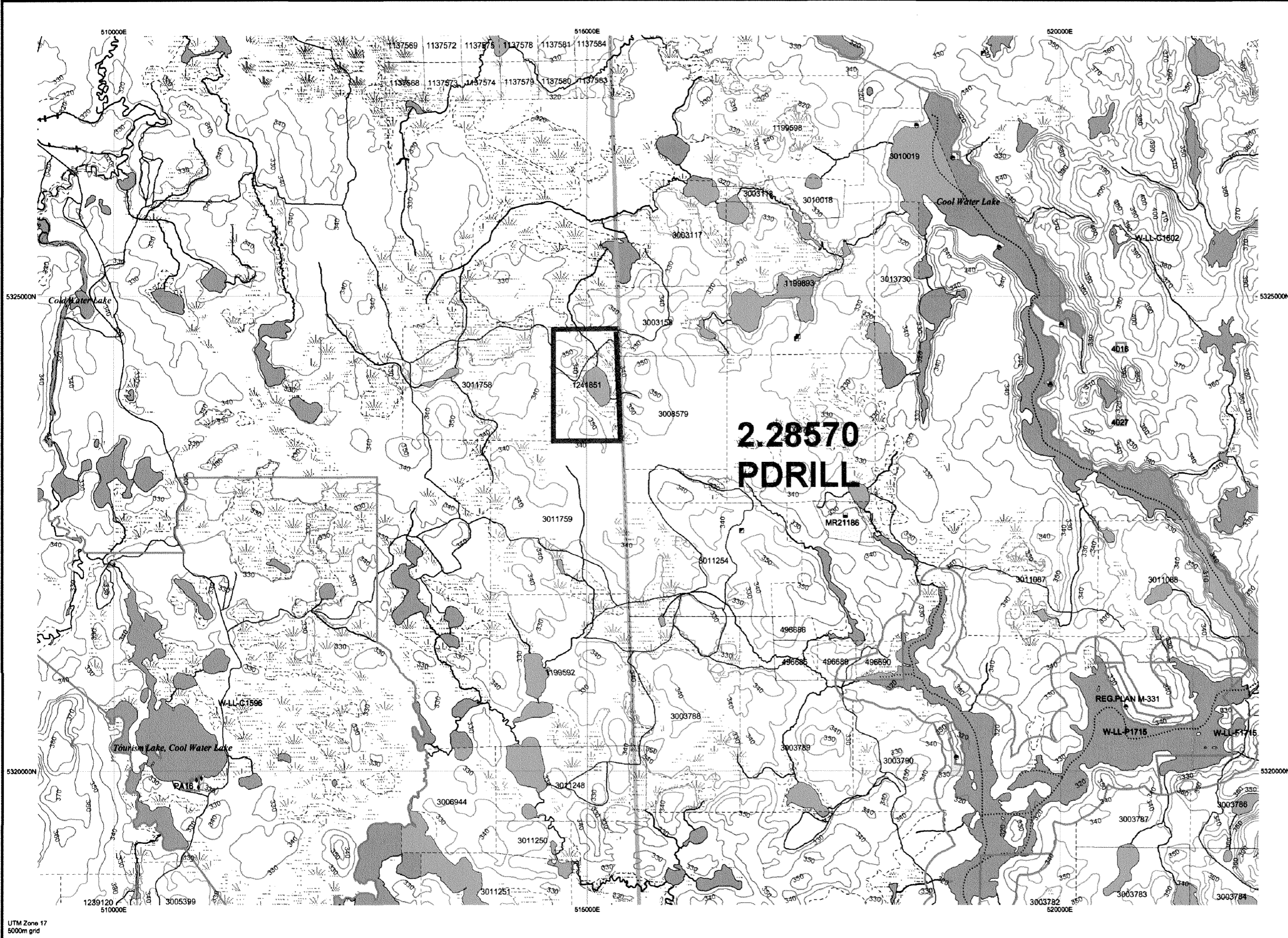
TOWNSHIP / AREA
BADEN

PLAN
M-0205

ADMINISTRATIVE DISTRICTS / DIVISIONS

Mining Division
Land Titles/Registry Division
Ministry of Natural Resources District

Larder Lake
TIMISKAMING
KIRKLAND LAKE

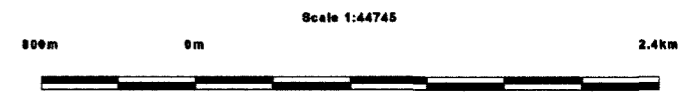
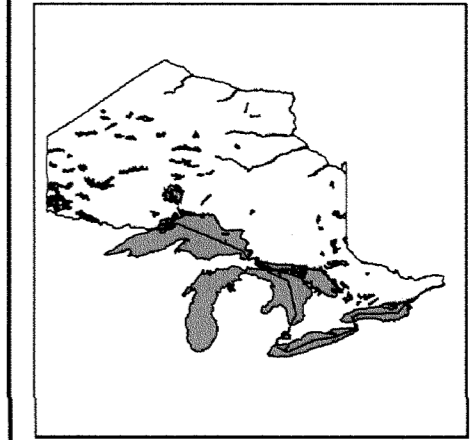


TOPOGRAPHIC

- Administrative Boundaries
- Township
- Concession, Lot
- Provincial Park
- Indian Reserve
- Cliff, Pit & Pile
- Contour
- Mine Shafts
- Mine Headframe
- Railway
- Road
- Trail
- Natural Gas Pipeline
- Utilities
- Tower

Land Tenure

- Freehold Patent**
 - Surface And Mining Rights
 - Surface Rights Only
 - Mining Rights Only
- Leasehold Patent**
 - Surface And Mining Rights
 - Surface Rights Only
 - Mining Rights Only
- Licence of Occupation**
 - Uses Not Specified
 - Surface And Mining Rights
 - Surface Rights Only
 - Mining Rights Only
- Land Use Permit**
 - Land Use Permit
- Order In Council (Not open for staking)**
 - Order In Council (Not open for staking)
- Water Power Lease Agreement**
 - Water Power Lease Agreement
- Mining Claim**
 - Mining Claim
 - Filed Only Mining Claims
- LAND TENURE WITHDRAWALS**
 - Areas Withdrawn from Disposition
 - Mining Acts Withdrawal Types**
 - Surface And Mining Rights Withdrawn
 - Surface Rights Only Withdrawn
 - Mining Rights Only Withdrawn
 - Order In Council Withdrawal Types**
 - Surface And Mining Rights Withdrawn
 - Surface Rights Only Withdrawn
 - Mining Rights Only Withdrawn
- IMPORTANT NOTICES**
 - No



Those wishing to stake mining claims should consult with the Provincial Mining Recorders' Office of the Ministry of Northern Development and Mines for additional information on the status of the lands shown hereon. This map is not intended for navigational, survey, or land title determination purposes as the information shown on this map is compiled from various sources. Completeness and accuracy are not guaranteed. Additional information may also be obtained through the local Land Titles or Registry Office, or the Ministry of Natural Resources.

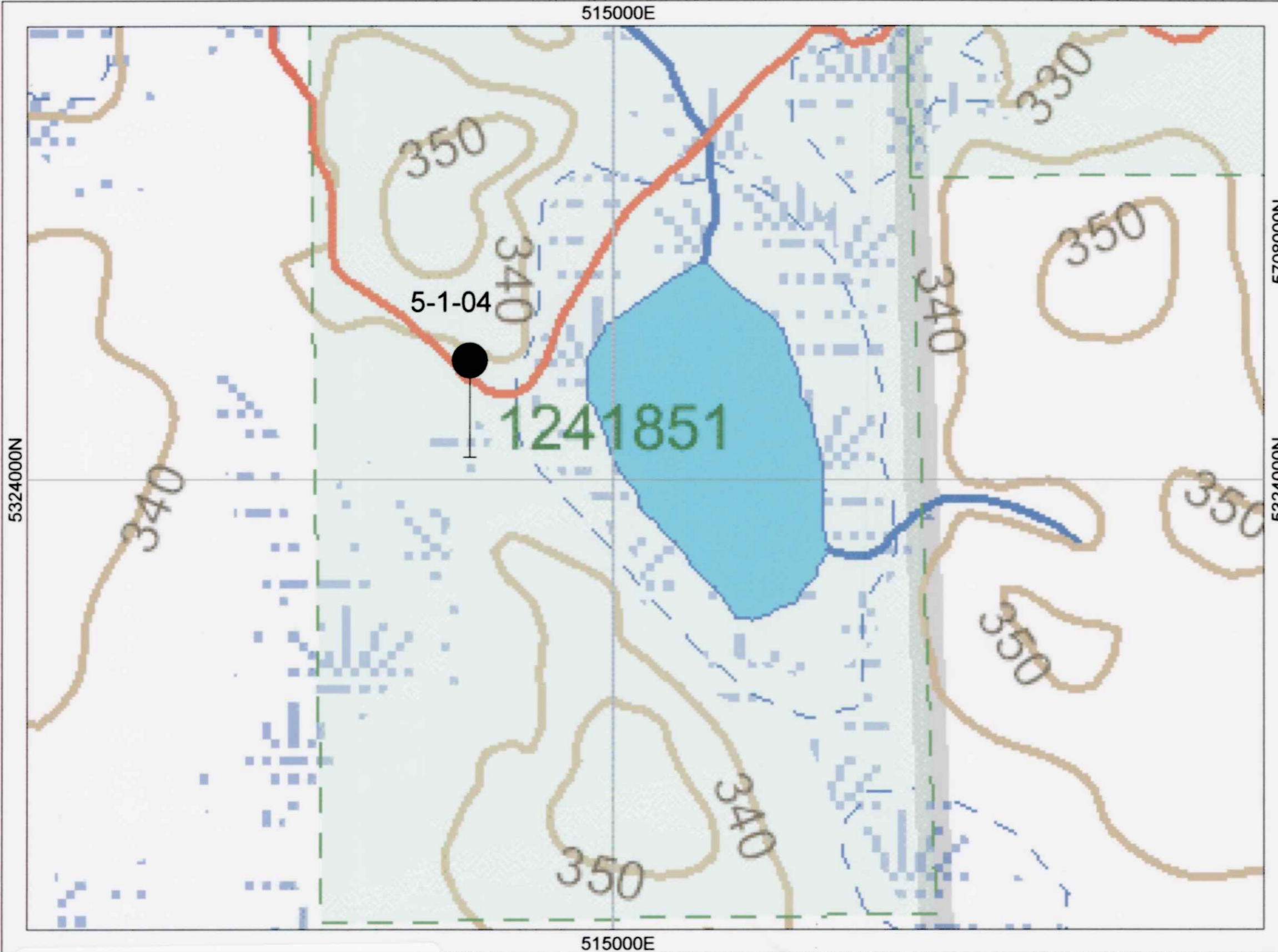
General Information and Limitations
Contact Information:
Provincial Mining Recorders' Office
Wilket Green Miller Centre 933 Ramsey Lake Road
Sudbury ON P3E 8B5
Home Page: www.mndm.gov.on.ca/MNDM/MINESLANDS/mismnpge.htm

Toll Free
Tel: 1 (888) 415-9845 ext 5799
Fax: 1 (877) 870-1444
Map Datum: NAD 83
Projection: UTM (6 degree)
Topographic Data Source: Land Information Ontario
Mining Land Tenure Source: Provincial Mining Recorders' Office

This map may not show unregistered land tenure and interests in land including certain patents, leases, easements, right of ways, flooding rights, licences, or other forms of disposition of rights and interest from the Crown. Also certain land tenure and land uses that restrict or prohibit free entry to stake mining claims may not be illustrated.

The information shown is derived from digital data available in the Provincial Mining Recorders' Office at the time of downloading from the Ministry of Northern Development and Mines web site.

2.28570



5-1-04



DIAMOND DRILL HOLE

DIAMOND DRILL LOCATIONS

HOLE 5-1-04 514829EE - 5324142N



NOVAWEST RESOURCES INC.

SOLANO PROPERTY

BADEN TWP. - LARDER LAKE MINING DIVISION

DRILL PLAN

OCTOBER 2004

NAD 83 ZONE 17

CLARK EXPLORATION CONSULTING

