

DIAMOND DRILLING



42A02SW8431 17 MCNEIL

010

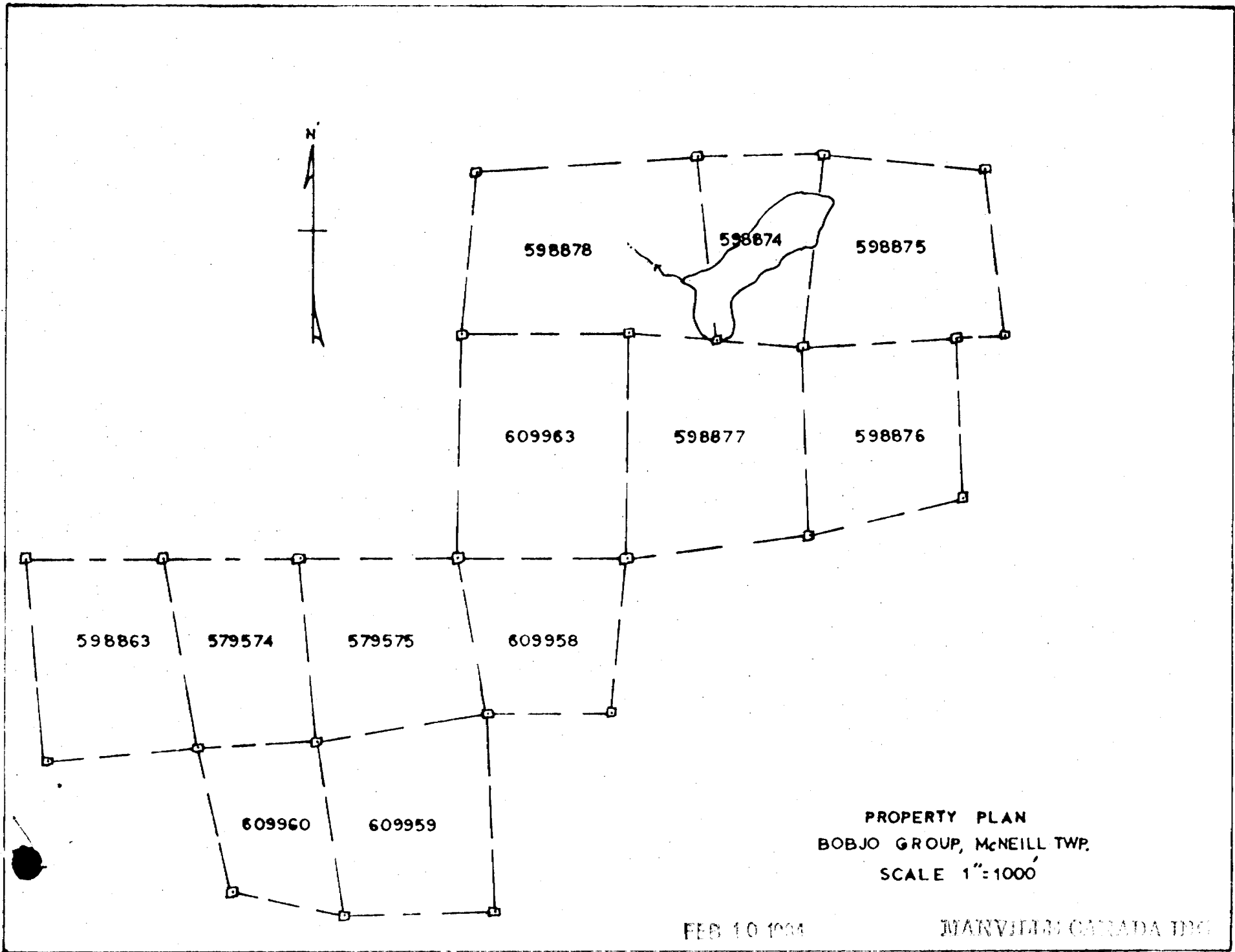
TOWNSHIP: McNeil

REPORT No.: 17

WORK PERFORMED BY: Manville Canada Inc.

<u>CLAIM No.</u>	<u>HOLE No.</u>	<u>FOOTAGE</u>	<u>DATE</u>	<u>NOTE</u>
L 579574	McN 83-1	120	Aug/83	(1)
	McN 83-2	116	Sept/83	(1)
L 579575	McN 83-3	114	Sept/83	(1)
	McN 83-4	117	Sept/83	(1)

NOTES: (1) #64-84

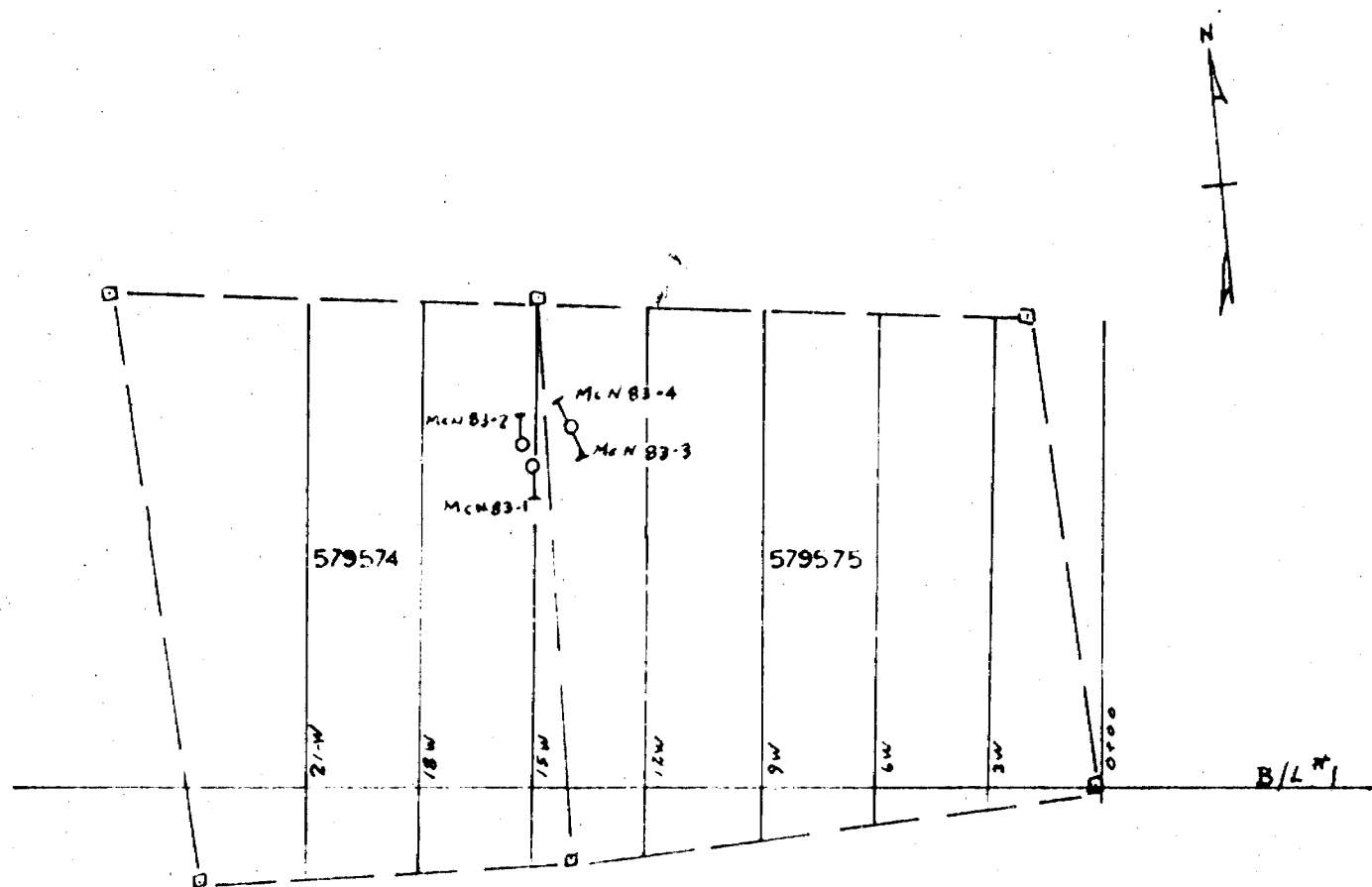


PROPERTY PLAN  
BOBJO GROUP, McNEILL TWP.  
SCALE 1"=1000'

FEB 10 1904

MARVIN M. CARLADA INC.

*W. C. C. C. C.*

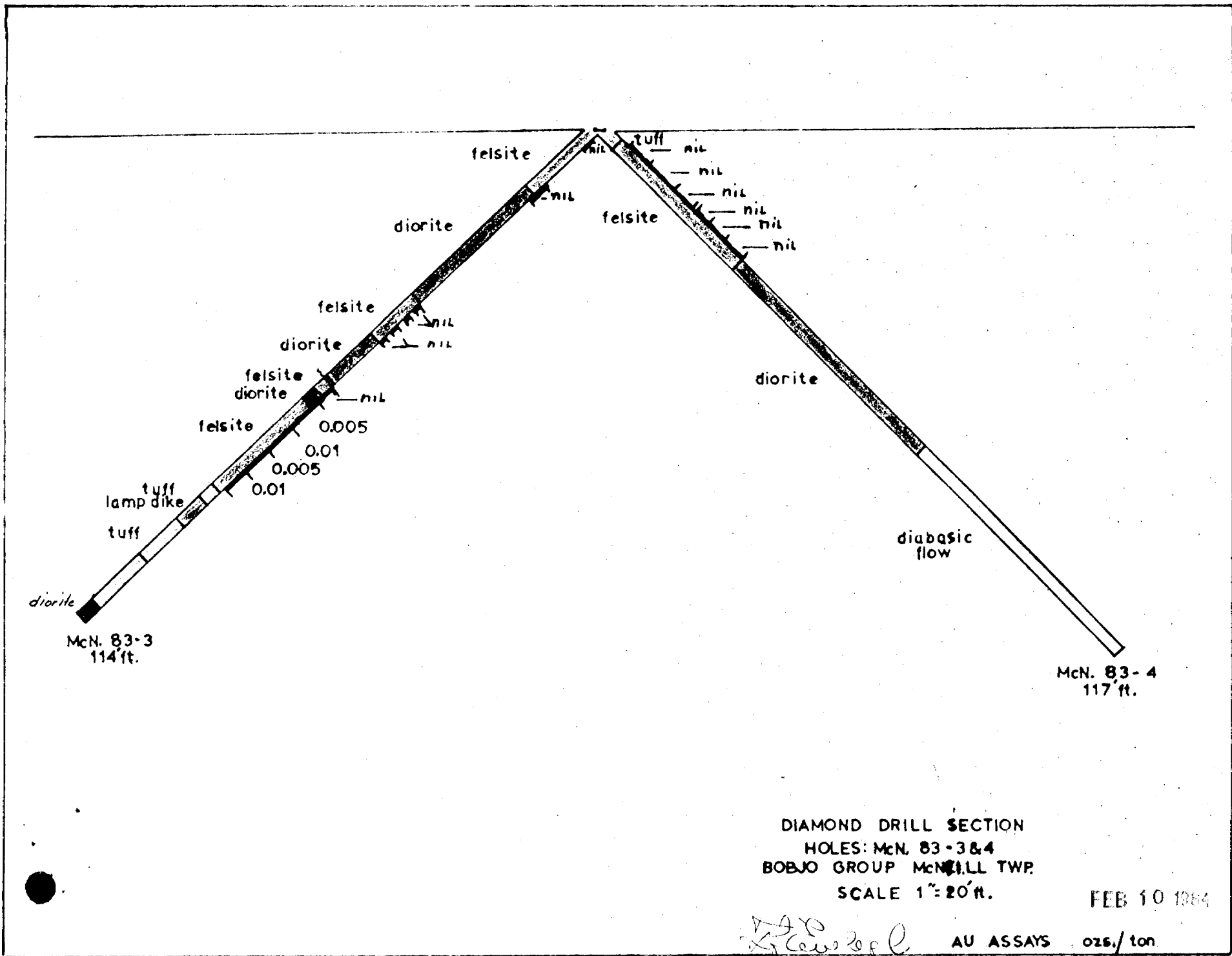


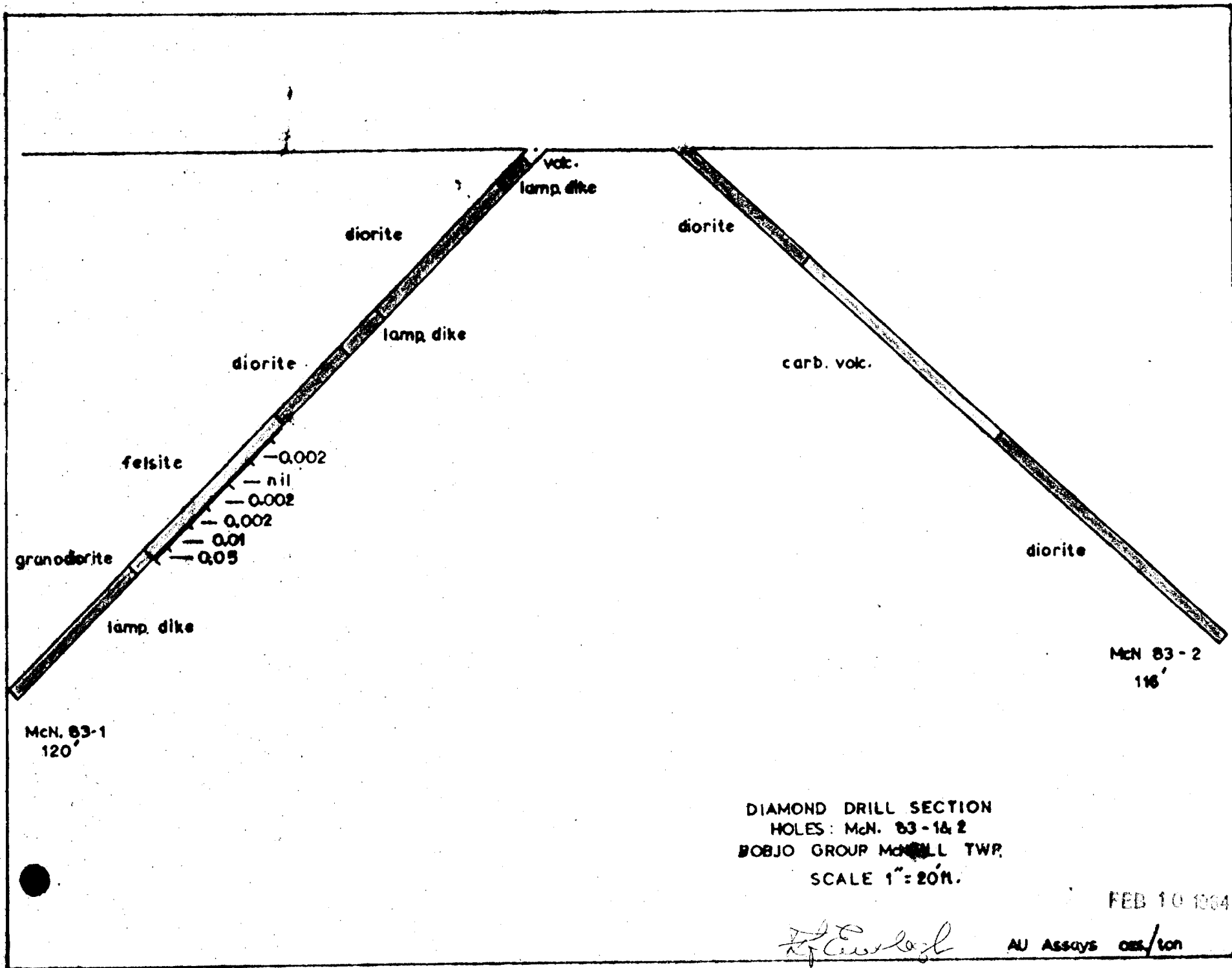
DIAMOND DRILLING PLAN  
 BOBJO GROUP McNEILL TWP.  
 SCALE 1" = 500' ft.

FEB 10 1984

MANVILLE CANADA INC.

*Handwritten signature*





# DIAMOND DRILL RECORD

FEB 10 1984

MANVILLE CANADA INC.

HOLE NO. McN-83-1 SHEET NO. 1

NAME OF PROPERTY Bobjo Group - McNeill Twp.  
 HOLE NO. McN-83-1 LENGTH 120'  
 LOCATION 8+39 North of B/L #1 on P/L 15+00 West  
 SURFACE Surface AZIMUTH S6°W DIP -45°  
 DATE Aug 30/83 TO Sept 9/83

DEPTH	DIAMETER	AZIMUTH	FOOTAGE	DIP	AZIMUTH

REMARKS Claim L-579574

LOGGED BY R.F.K.

*Richard F. K...*

DEPTH	DIAMETER	DESCRIPTION	SAMPLE			ANALYSIS	
			FEET	FOOTAGE	TOTAL	Au	OTHER
0	2	Fine grained, altered, pyritized pillow lava					
2	58.8	Moderately carbonated diorite, pyrite on slips, contact at 30° 9-10.6 - fine grained volcanic, fractures at 45° 28-29 - volcanic? dike, fine pyrite 36.2-43.8 - lamprophyre dike; diorite contact at 30° 40 - 1/2" white quartz vein at 30° 42.6-43.8 - sulphides along contact with diorite					
58.8	61.5	Grey felsite, disseminated pyrite					
61.5	88.2	Fine grained, pink felsite, contact at 20°, white, quartz-filled fractures with cubic & disseminated pyrite at 30° (1/8" to 1" in width)	1618	61.8	66.8	5.0	0.002
			1619	66.8	71.8	5.0	Nil
			1620	71.8	74.8	3.0	0.002
			1621	76.8	81.0	4.2	0.002
88.8	92.5	Grey to pink granodiorite, light green micaceous crystals narrow quartz-filled fracture zones with finely disseminated pyrite throughout core 86-96.8 - minor sulphides	1622	81.0	86.0	5.0	0.01
			1623	86.0	89.0	3.0	0.05
92.5	120	Lamprophyre dike, dark green to black micaceous crystals 92.5-92.8 - sulphide zone 119.8 - 1" pink quartz-calcite vein 119.8-120 - disseminated sulphides					
	120	END OF HOLE					

REV. 10/83

MANVILLE CANADA INC.

# DIAMOND DRILL RECORD

MANVILLE CANADA INC.

FEB 10 1984

NAME OF PROPERTY Bobjo Group - McNeill Twp.  
 HOLE NO. McN-83-2 LENGTH 116'  
 LOCATION 8+63' North of B/L #1 on line 15+13 West  
 LATITUDE \_\_\_\_\_ DEPARTURE \_\_\_\_\_  
 ELEVATION Surface AZIMUTH N10°E DIP -42°  
 STARTED Sept 10/83 FINISHED Sept 12/83

FOOTAGE	DIP	AZIMUTH	FOOTAGE	DIP	AZIMUTH

HOLE NO. McN-83-2 SHEET NO. 1

REMARKS Claim L-579574

LOGGED BY R. E. K.

FOOTAGE		DESCRIPTION	SAMPLE			ASSAYS					
FROM	TO		NO.	SULPHIDES	FOOTAGE			%	%	OZ/TON	OZ/TON
					FROM	TO	TOTAL				
0	26	Altered diorite, rusty fractures at 45° to core axis 0 - 6 weakly sheared									
26	67.5	Grey, fine grained, weakly carbonated volcanic, sharp contact at 40° - 2" alteration zone. Barren 1/8" quartz-carbonate filled fractures at 40° to 50°. From 42 - scattered cubes of pyrite throughout core lower contact at 60°.									
67.5	116	Altered, bleached diorite, weakly sheared 77-116 - 1/8" to 1/2" quartz-carbonate zones, barren of sulphides - 30° to 40° to core axis Rock becomes more massive									
	116	END OF HOLE									

EM. 6-1168

LANGRIDGE LIMITED.

# DIAMOND DRILL RECORD

FEB 10 1984

MANVILLE CANADA INC.

HOLE NO. MCN-83-3 SHEET NO. 1

NAME OF PROPERTY Bobjo Group - McNeill Twp  
 HOLE NO. MCN-83-3 LENGTH 114'  
 LOCATION 9+16' North of E/L #1 on line 14+00 West  
 LATITUDE \_\_\_\_\_ DEPARTURE \_\_\_\_\_  
 ELEVATION Surface AZIMUTH S20°E DIP -42°  
 STARTED Sept 13/83 FINISHED Sept 15/83

FOOTAGE	DIP	AZIMUTH	FOOTAGE	DIP	AZIMUTH

REMARKS Claim L-579575

LOGGED BY R.F.K.  
*Richard G. Kallman*

EM, G-1168

LANGRIDGE LIMITED,

FOOTAGE		DESCRIPTION	SAMPLE				ASSAYS	
FROM	TO		NO.	SULPHUR %	FOOTAGE FROM TO TOTAL	Au OZ/TON	OZ/TON	
0	3	Light grey felsite, narrow quartz fractures, hair line streaks of fine sulphides, rusty fractures at 40°	1624		1 3 2.0	Nil		
3	4	Altered diorite ? light grey, mottled with green amphiboles						
4	12	Light grey barren felsite	1625		11.0 14.5 3.5	Nil		
12	14.5	Sharp contact at 20° to pink felsite, hairline quartz fractures & fine sulphides						
14.5	39.6	Light green, altered diorite - gradual change to less altered grey colour with depth 16-18 strong low-angled slip zone 35-38 - grey, altered section 38-39.6 - breccia zone at contact, quartz fillings & fine sulphides	1626		39.5 40.5) 2.0 42.0 43.0)	Nil		
39.6	83	Knife-edge contact at 45° with rose pink felsite, finely disseminated sulphides in narrow, quartz fractures 40.6-41.6 - grey, medium grained diorite, contact at 10° 43-44 - diorite inclusion; 46-47 - diorite inclusion 48.6-58.6 - light grey, massive, altered diorite, contact at 55, scattered slips at 40° - 45°. 58.6 - 2" gouge on contact At 62 - white quartz vein 6", barren At 63 - white quartz vein 2", barren 62-64 - diorite, massive, contact at 90° 65-67 - strong slip - pyrite on face 67-74 - scattered narrow quartz veins, minor sulphides	1627		44.5 46.0) 3.0 47.0 48.6)	Nil		
			1628		59.0 63.0 4.0	Nil		
			1629		64.0 69.0 5.0	0.005		
			1630		69.0 74.0 5.0	0.01		
			1631		74.0 79.0 5.0	0.005		
			1632		79.0 83.0 4.0	0.01		
83	84	Grey felsite, barren; tuff contact at 45°						



# DIAMOND DRILL RECORD

NAME OF PROPERTY \_\_\_\_\_  
 HOLE NO. \_\_\_\_\_ LENGTH \_\_\_\_\_  
 LOCATION \_\_\_\_\_  
 LATITUDE \_\_\_\_\_ DEPARTURE \_\_\_\_\_  
 ELEVATION \_\_\_\_\_ AZIMUTH \_\_\_\_\_ DIP \_\_\_\_\_  
 STARTED \_\_\_\_\_ FINISHED \_\_\_\_\_

FOOTAGE	DIP	AZIMUTH	FOOTAGE	DIP	AZIMUTH

HOLE NO. MCN-83-3 SHEET NO. 2

REMARKS \_\_\_\_\_

LOGGED BY *Richard J. Halliday*

FOOTAGE		DESCRIPTION	SAMPLE			ASSAYS				
FROM	TO		NO.	SULPHIDES	FOOTAGE		%	%	OZ/TON	OZ/TON
					FROM	TO				
84	87	Light tan-coloured tuff, minor pyrite								
87	92	Lamprophyre dike								
92	110	Light grey tuff, minor disseminated sulphides - gradually changing to grey-green in colour								
110	114	Coarse altered diorite 113-113.8 - tuff remnant								
	114	END OF HOLE								

EM. 6-1168

LANGRIDGE LIMITED

# DIAMOND DRILL RECORD

FEB 10 1984

MANVILLE CANADA INC.

NAME OF PROPERTY Bobjo Group - McNeill Twp.  
 HOLE NO. McN-83-4 LENGTH 117'  
 LOCATION 9+17' North of B/L #1 on line 14+00 West  
 LATITUDE \_\_\_\_\_ DEPARTURE \_\_\_\_\_  
 ELEVATION Surface AZIMUTH N20°W DIP -45°  
 STARTED Sept 15/83 FINISHED Sept 23/83

FOOTAGE	DIP	AZIMUTH	FOOTAGE	DIP	AZIMUTH

HOLE NO. McN-83-4 SHEET NO. 1  
 REMARKS Claim L-579575

LOGGED BY R.F.Y.  
*Richard J. Halliwell*

EM. C-1168

LANGRIDGE LIMITED.

FOOTAGE		DESCRIPTION	SAMPLE			ASSAYS	
FROM	TO		NO.	SULPHIDES	FOOTAGE FROM TO TOTAL	Au. OZ/TON	OZ/TON
1	3	Light grey tuff, quartz-filled fractures with sulphides					
3	9.5	Light pink felsite, disseminations & dark grey streaks of pyrite 4-6 - 1/8" to 1/4" rusty quartz fractures	1633		3 8 5.0	Nil	
9.5	13.5	Grey felsite - sharp contact with pink felsite at 2° down core, disseminations and streaks of sulphides	1634		8 13 5.0	Nil	
13.5	17.6	Deep pink felsite, fractured, sulphides as above	1635		13.0 17.5 4.5	Nil	
17.6	18.1	Diorite dike ? contact at 70°	1636		18 21 3.0	Nil	
18.1	30	Pink felsite changing to deep brick red from 20' - 24', light pink from 24'-26' and light grey from 26'-30' - sulphides as above throughout	1637		21.0 24.5 3.5	Nil	
30	72	Dioritic flow, contact at 50°, 1/2" quartz vein at contact 30-51 - narrow, barren, quartz-carbonate fractures 51-72 - fractures more widely scattered	1638		24.5 29.5 5.0	Nil	
72	117	Massive, diabasic flow, barren quartz-carbonate zones 95-98 - strongly fractured 112 - 1" quartz vein at 45°, barren 116- 1" pink calcite-quartz vein at 45°, barren					
117		END OF HOLE					

Cassidy  
Litt

(File # 579574)

McNeil

#64



THE MINING ACT

900

To the Recorder of Larder Lake Mining Division

I, Manville Canada Inc. T-1330

name of Recorded Holder

Miner's Licence

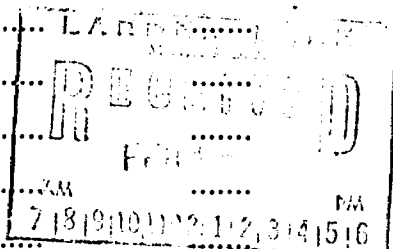
P.O. Box 610, Matheson, Ontario POK 1N0

Post Office Address

do hereby report the performance of 16 days of diamond drill cores type of work

not before reported to be applied on the following contiguous claims

Claim No.	Days	Claim No.	Days	Claim No.	Days
L-579574	1.33	L-598877	1.33		
-579575	1.33	-598878	1.33		
-598863	1.33	-609958	1.33		
-598874	1.33	-609959	1.33		
-598875	1.33	-609960	1.33		
-598876	1.33	-609963	1.33		



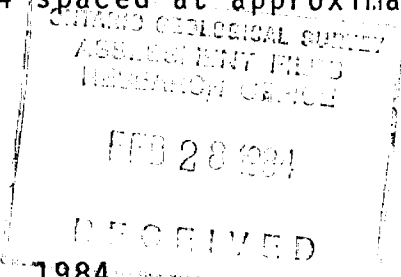
All the work was performed on Mining Claim (s) L-579574 & 579575 (In the case of geological and/or geophysical survey (s) where more than 18 claims are involved attach a schedule)

READ CAREFULLY: THE FOLLOWING INFORMATION IS REQUIRED BY THE MINING RECORDER.

- For Manual Work, Stripping or Opening up of Mines, Sinking Shafts or Other Actual Mining Operations - Names and addresses of the men who performed the work and the dates and hours of their employment.
- For Diamond and other Core Drilling - Footage, No. and angle of holes and diameter of core. Name and address of owner or operator of drill. Dates when drilling was done. Signed core log and sketch in duplicate.
- For Compressed Air or Other Power Driven or Mechanical Equipment - Type of drill or equipment. Names and addresses of men engaged in operating equipment and the dates and hours of their employment.
- For Power Stripping - Type of equipment. Name and address of owner or operator. Amount expended. Dates on which work was done. Proof of actual cost must be submitted within 30 days of recording.
- With each of the above types of work sketches are required to show the location and extent of the work in relation to the nearest claim post. In the case of diamond or other core drilling the sketch must be submitted in duplicate.
- For Geological and Geophysical Survey - The names and addresses of men employed as well as dates. Type of instrument used in the case of geophysical survey. Reports and maps in duplicate must be filed with the Minister within 60 days of recording.
- For Land Survey - the name and address of Ontario Land surveyor.

The Required Information is as Follows: (Attach a list if this space is insufficient)

16 - 6" core specimens from diamond drill holes  
McN. 83-1, 2, 3 & 4 spaced at approximately 25' intervals.



MANVILLE CANADA INC.,

Date February 10th, 1984

per; F.J. Evelegh  
Signature of Recorded Holder or Agent  
F.J. Evelegh, Exploration Manager

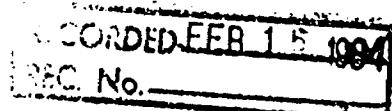
The Mining Act  
Certificate Verifying Report of Work

I, F.J. Evelegh  
P.O. Box 610 Matheson, Ontario POK 1N0  
(Post Office Address)

hereby certify:

1. That I have a personal and intimate knowledge of the facts set forth in the report of work annexed hereto, having performed the work or witnessed same during and/or after its completion.

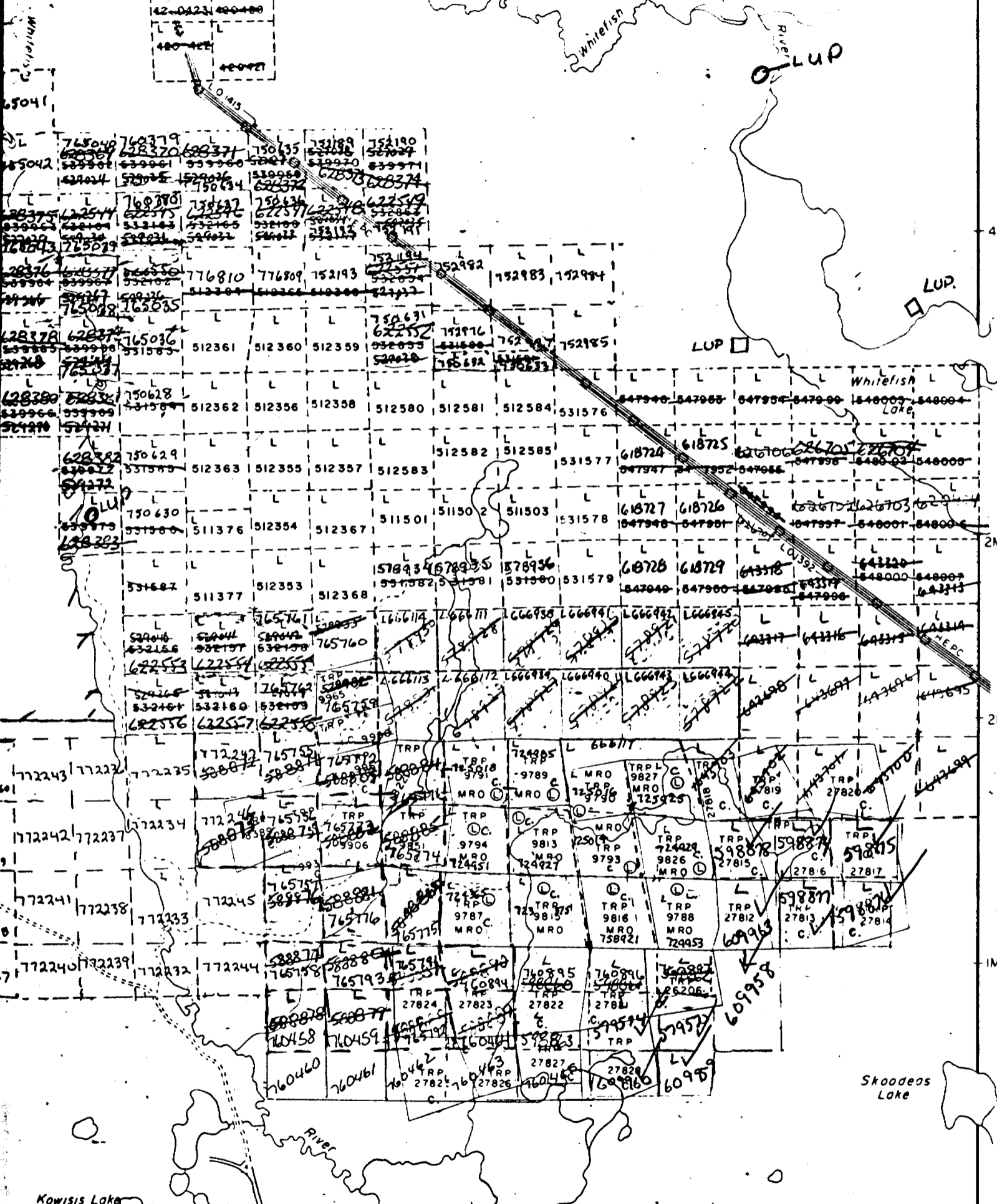
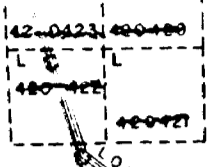
Signature



PENALTY FOR MAKING A FALSE STATEMENT IN THIS REPORT AND/OR CERTIFICATE IS \$500. OR SIX MONTHS IMPRISONMENT OR BOTH

GRAVEL  
P.L. 180449  
E3

GRAVEL  
P.L. 180449



ARGYLE TWP. M.203

McNeillup  
M300