



42A03NE0055 2.262 GEIKIE

010

2.262

PROPERTY CLAIMS LIST

The property consists of 20 contiguous crown land mining claims in Geikie Township and are numbered P243256 to P243275 inclusive.

LOCATION AND ACCESSIBILITY

The property is situated in the north-west corner of Geikie Township, Porcupine Mining Division of Ontario, a distance of 22 air miles south-east from Timmins, Ontario to the middle of the property.

Best access is by motor vehicle south from Timmins on the Matachewan Road (which is a good gravel road under improvement) for 23 miles to the Texmont Mine road-head, and then 4 miles north-east to the Texmont Mine site (now in pre-production stage). From the minesite to the property walking access is made by using the mine pipeline road which crosses the south end of the property to the pumphouse on the Redstone River, a total distance of 1.37 miles to the south-east corner of the property.

GENERAL GEOLOGY

The area (as per Map 2046 Timmins - Kirkland Lake Sheet) is underlain by Archean Rocks of the Precambrian Era and are geographically distributed as follows: The south-east corner is underlain by granite for $\frac{3}{4}$ mile to the north-west where the south-east contact of the south-west tongue of a large peridotite mass is reached. The peridotite extends for a width of about $\frac{1}{4}$ mile to a band of iron formation which forms the contact of the peridotite and basic lavas to the north-west off the property limits. The sequence of deposition is the reverse of the order listed above. General rock attitude is a NE strike with a dip of steeply south-east to vertical.

SUMMARY OF THE ELECTROMAGNETIC SURVEY

The property was gridded with east-west striking cut, chained and picketed survey lines run at 300 foot intervals from a north-south base line. Additional lines for further detail work were run at 100 foot intervals in conductive areas.

The extreme north-west lines were surveyed with a McPhar Model SS15 Dual Frequency 1000/5000 c.p.s. Vertical Loop Unit, fixed transmitter method, but the use of this instrument was discontinued due to power line interference and the survey was completed using the Crone J.E.M. 480/1800 c.p.s. Unit employing the in-line, shoot back method with readings taken at 100 foot station intervals with 50 foot readings taken in detail areas.

Eight very weak conductors were detected and are designated as Conductors A to H inclusive.

Conductors C, D, F, G and H are one line conductors close to the cutoff range of the reading strength designated as a conductor with this instrument. Conductor C lies on the fringe of a small magnetically high anomaly. Conductors A, B and E are also weak but more definitely conductors due to their extension and confirmation on detail lines, but this is not to say that the other one-line conductors are not equally as important.

Ground prospecting and soil sampling of all conductors is recommended.

SUMMARY OF THE MAGNETOMETRIC SURVEY

The Mag. Survey was carried out over the same line grid as
the E.M. Survey using the McPhar Model M-700 Fluxgate Magnetometer with
a sensitivity of 20 gammas per scale division on the lowest range. Readings
were taken at 100 foot station intervals and at 50 foot intervals in detail
areas.

Magnetic control stations were established at workable intervals within the property grid.

The survey indicates a NE to north-south structure strike with many random areas of magnetic highs and lows, mostly over the area of the main peridotite mass. This is partly due to the fact that so many readings were taken at 50 foot intervals on 100 foot line spacings in detail areas and partly due to the probable random dispersal of magnetite rich areas in the ultrabasic intrusive and in glacial boulders of the same rock plus iron formation.

Readings over the remaining known rock types are more normal and a band of iron formation was delineated on the projection of a known band in the west central part of the property.

Respectfully submitted,



C.F. DESSON
Exploration Manager

2.262

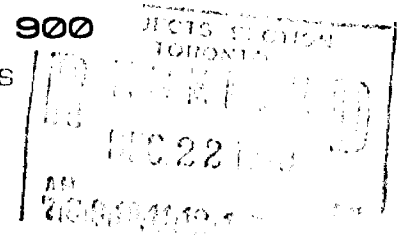
705
267-1171



42A03NE0055 2.262 GEIKIE

DEPARTMENT OF MINES AND NORTHERN AFFAIRS
127 Third Avenue,
Timmins, d Ontario,
December 21, 1970.

MINING LANDS BRANCH
OFFICE OF THE MINING RECORDER



Fred W. Matthews,
Supervisor, Projects Section,
Ontario Department of Mines,
Whitney Block,
Parliament Buildings, Toronto.

NOTIFICATION OF RECORDING
OF ASSESSMENT WORK CREDITS

Date of Recording of Work December 21, 1970
Recorded Holder Texmont Mines Limited,
P.O. Box 67, Toronto-Dominion Centre,
Toronto 111, Ontario,
(address)
Township or Area Bartlett and Geikie Townships

Type of Survey and number of Assessment Days Credits per claim
GEOPHYSICAL Airborne <input type="checkbox"/> Ground <input checked="" type="checkbox"/>
60 days (E.M. & Mag.)
Magnetometer days
Electromagnetic days
Radiometric days
..... days
GEOLOGICAL days
GEOCHEMICAL days
SECTION 84 (14) days

Mining Claims
P-243242-243275 incl.,
<i>243242-243275</i>
<i>7-2-71</i>

NOTICE TO RECORDED HOLDER

- Survey reports and maps in duplicate must be submitted to the Projects Section, Toronto within 60 days from the date of recording of this work.
- Reports and maps are being forwarded to Projects Section with this letter.

[Signature]
Acting Mining Recorder.

c.c.
Texmont Mines Limited

P.O. BOX 67
TORONTO-DOMINION BANK TOWER
TORONTO-DOMINION CENTRE
TORONTO 1, CANADA

Mr. Fred W. Matthews,

Supervisor, Projects Section,

Department of Mines & Northern Affairs,

Whitney Block,

Queens Park,

TORONTO,

Ontario

Douglas Twp. (M.274)

THE TOWNSHIP
OF
GEIKIE

DISTRICT OF
TIMISKAMING

PORCUPINE
MINING DIVISION

SCALE: 1-INCH 40 CHAINS

LEGEND

PATENTED LAND	Ⓟ
CROWN LAND SALE	C.S.
LEASES	Ⓛ
LOCATED LAND	Loc
LICENSE OF OCCUPATION	L.O.
MINING RIGHTS ONLY	M.R.O.
SURFACE RIGHTS ONLY	S.R.O.
ROADS	—
IMPROVED ROADS	—
KING'S HIGHWAYS	—
RAILWAYS	—
POWER LINES	—
MARSH OR MUSKEG	—
MINES	⚡
CANCELLED	C

NOTES

400' Surface Rights Reservation around
all lakes and rivers.

*1 = E.M.
1 = M.R.O.*

DATE OF ISSUE
JAN 25 1971
OF THE DEPT. OF MINES
AND NORTHERN AFFAIRS

PLAN NO. **M-320**

ONTARIO
DEPARTMENT OF MINES
AND NORTHERN AFFAIRS

Bartlett Twp. (M.262)

Cleaver Twp. (M.269)

Zavitz Twp. (M.1189)



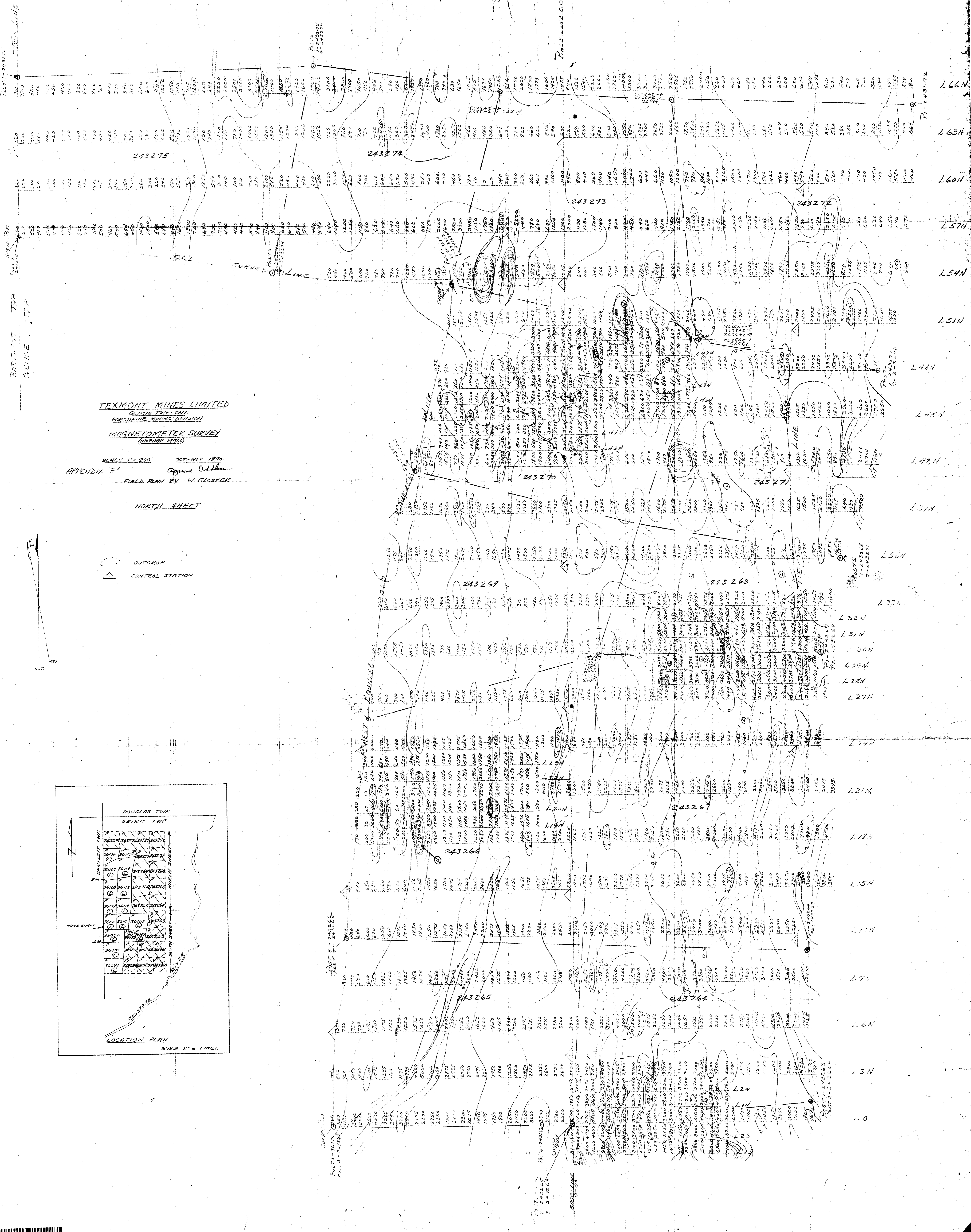
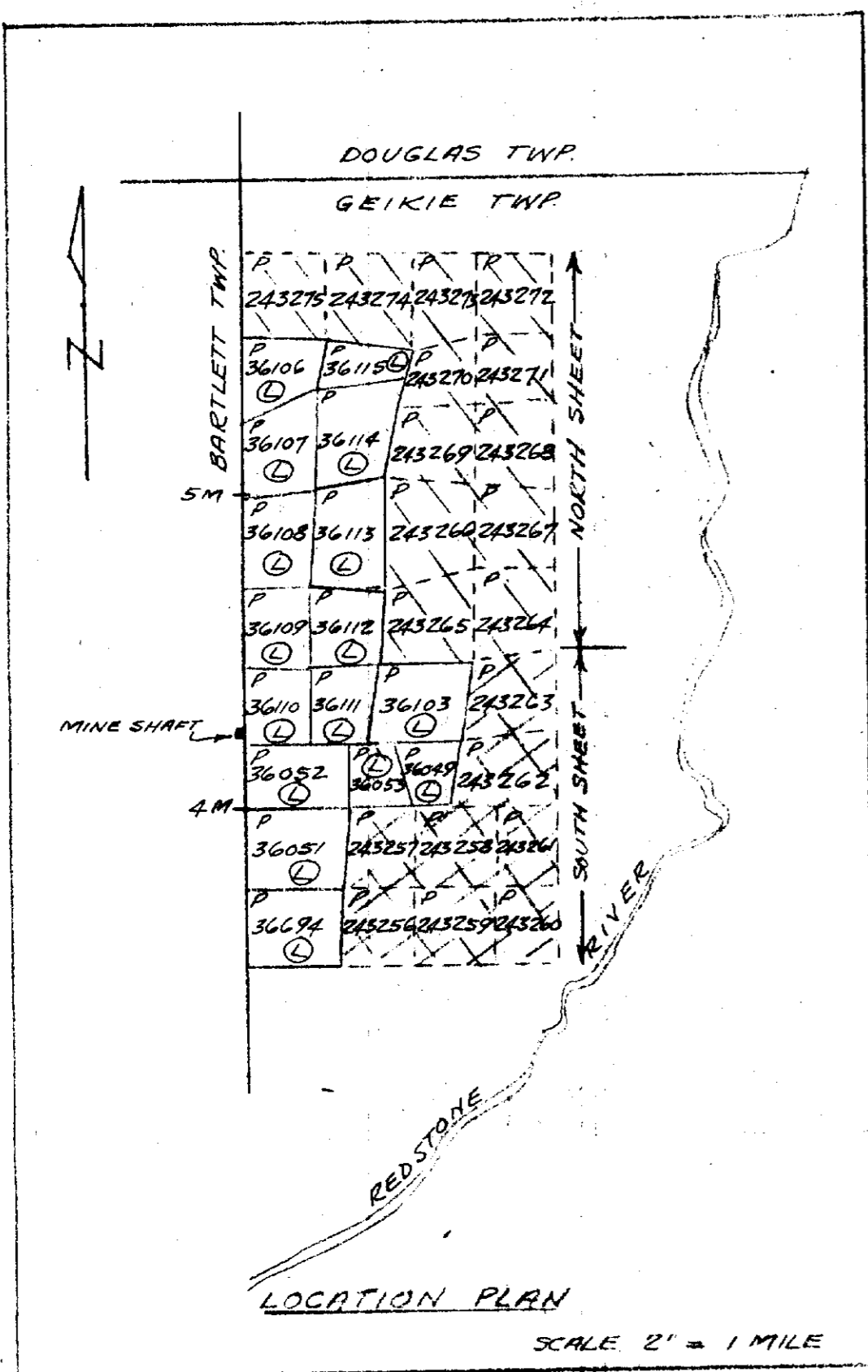
42A03NE055 2.262 GEIKIE

TEXMONT MINES LIMITED
 GEORGE TWP - DNT
 PORCUPINE MINING DIVISION
 MAGNETOMETER SURVEY
 (GEORGE TWP)

SCALE 1" = 200' OCT. NOV. 1970
 APPENDIX "F" *Oppard Chilton*
 FIELD PLAN BY W. GLOSTER

NORTH SHEET

- OUTCROP
- △ CONTROL STATION



TEXMONT MINES LIMITED
 GEOLIE TRP - ONT
 PORCUPINE MINING DIVISION
 MAGNETOMETER SURVEY
 (MCPHAE NT-700)

SCALE 1"=200' OCT.-NOV. 1970

FIELD PLAN BY W. GLOSTER
 Approx. Chief

SOUTH SHEET

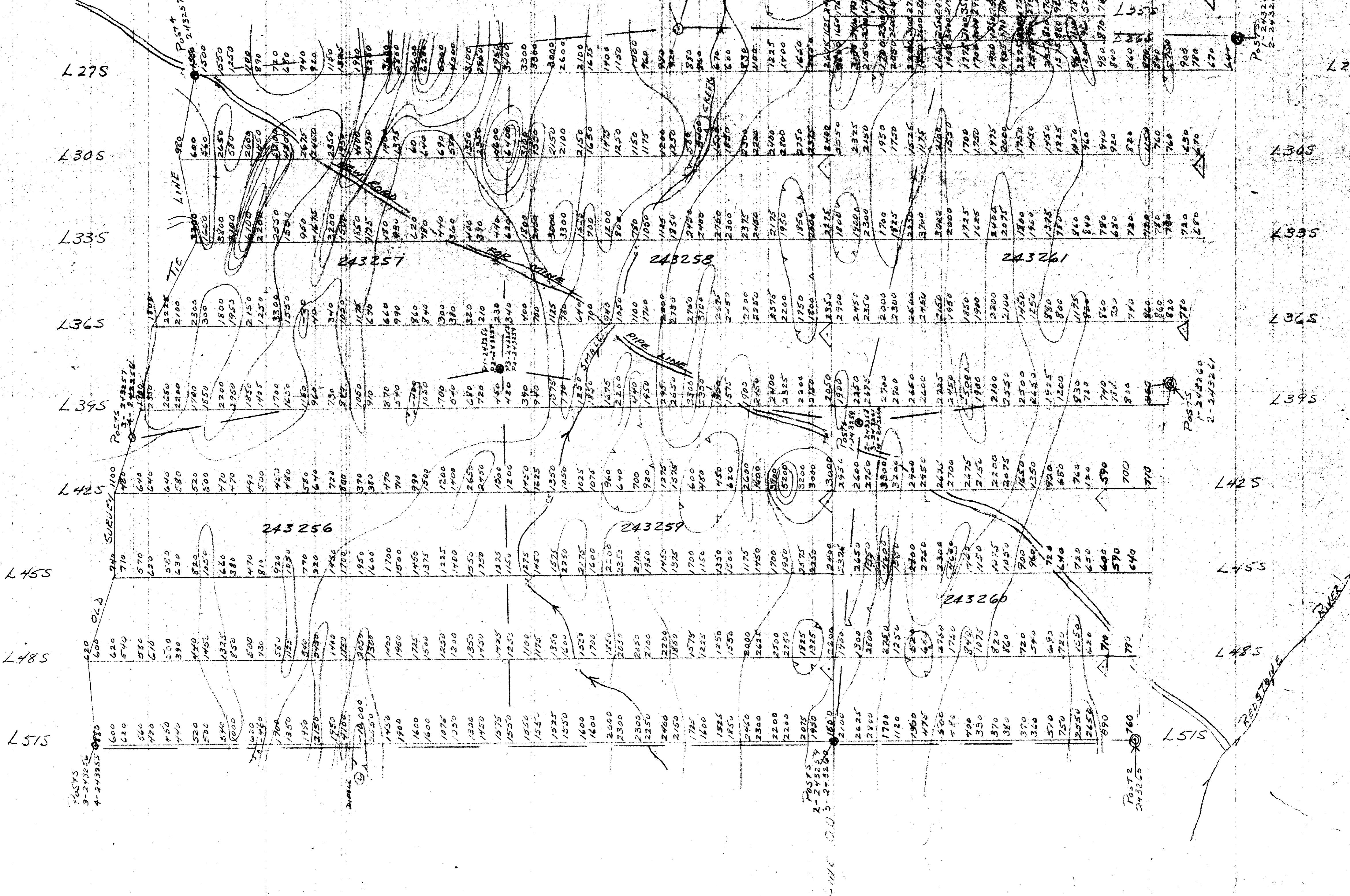
APPENDIX "G"

△ MAG. CONTROL STATION



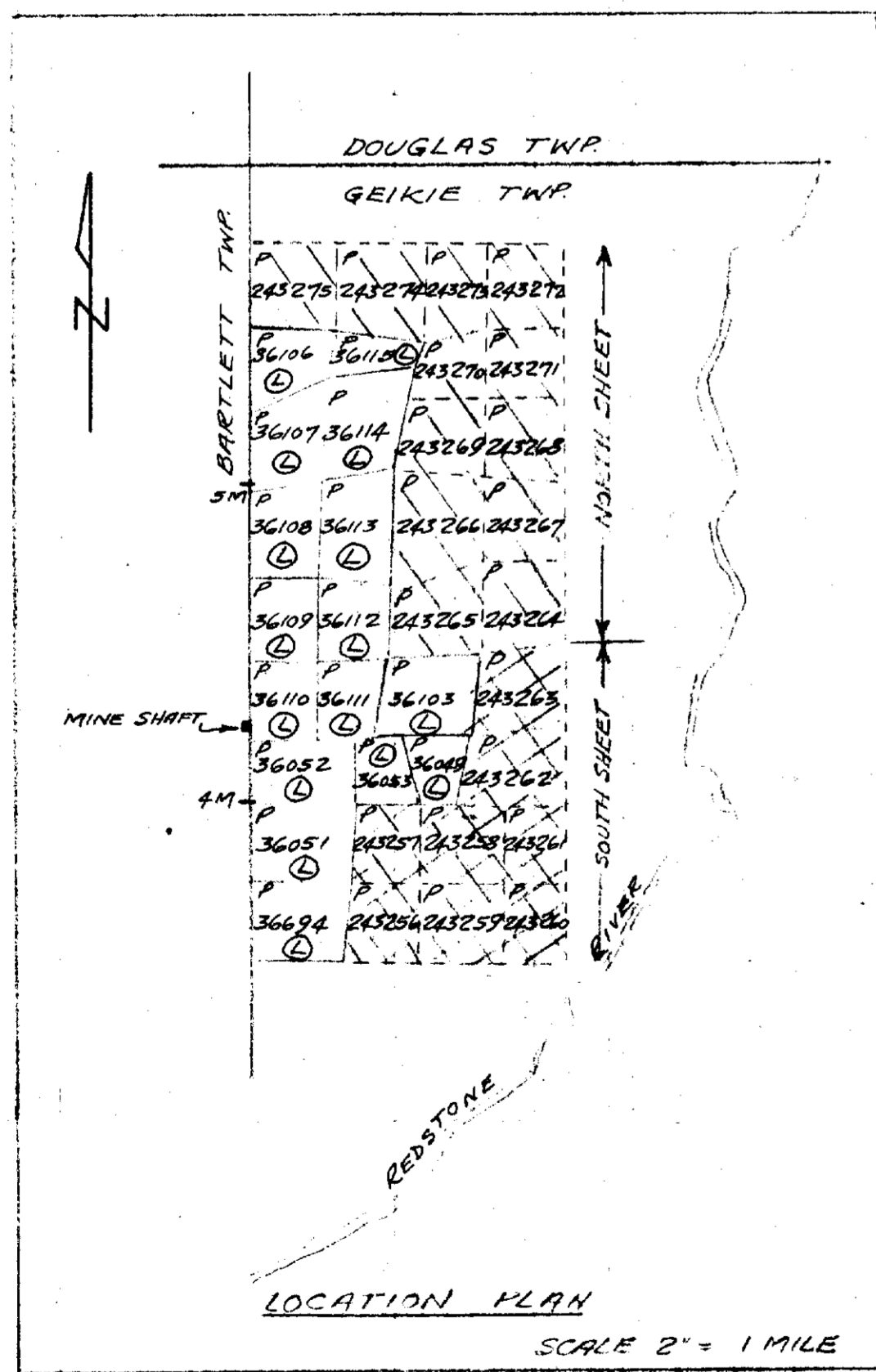
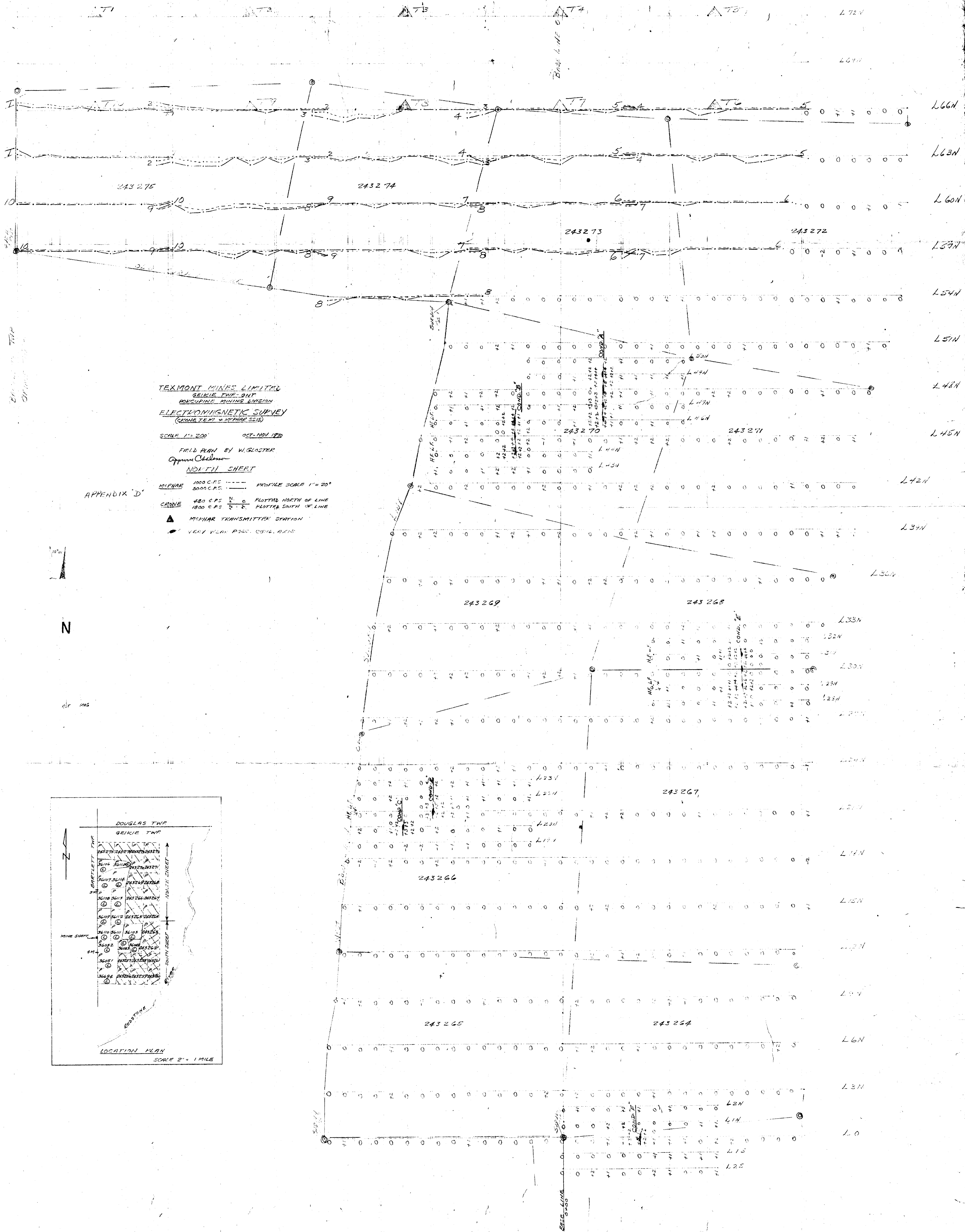
AST. MAG.

TO MINE SITE



L0
 L35
 L65
 L95
 L125
 L155
 L185
 L215
 L245
 L275
 L305
 L335
 L365
 L395
 L425
 L455
 L485
 L515





TEXMONT MINES LIMITED
 GEIKIE TWP. ONT.
 PORCUPINE MINING DIVISION
 ELECTROMAGNETIC SURVEY
 (GEONE T.E.M.)
 SCALE 1"=200' OCT-NOV. 1970

FIELD PLAN BY W. GLASTER
 Approved: *Challenger*

APPENDIX "E" SOUTH SHEET

* VERY WEAK POSS. COND. AXIS
 IS SHOWN NORTH SHEET FOR CLAIMS LOCATION PLAN

* LO FREQ. READINGS PLOTTED ON NORTH SIDE OF LINE (1800-230)
 * HI FREQ. READINGS PLOTTED ON SOUTH SIDE OF LINE (1800-230)

