



42A03NE0065 11 GEIKIE

010

Diamond Drilling

Township of GEIKE

Report No: 11

Work performed by: TEXMONT MINES LIMITED

Claim No	Hole No	Footage	Date	Note
P 77845	A-8	834'	Sept/65	

Notes:

13-2-310

P. 77845

Drilled by Bradley Bros. Drilling
 STARTED Sept. 18, 1965
 COMPLETED Oct. 1, 1965

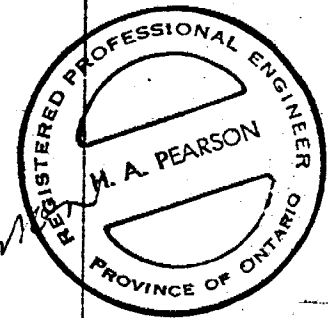
HOLE NO. 4-8
 PROPERTY Texmont Mines Limited
Bartlett - Geikie

DIP -15°
-40°
-15°

BEARING Due West LENGTH 8241
 LAT. 2600' N. of 5 mile post
 DEP. On Baseline

ELEV. _____
 Logged by H. A. Pearson, P. Eng.

FOOTAGE		DESCRIPTION	CORE				
FROM	TO		SPL. NO.	FROM	TO	WIDTH	GRADE
0	25.0	<u>Overburden</u> Casing					
25.0	38.0	<u>Aplite Dyke</u> Medium grained, some cubic pyrite.	3019	140	145	5	0.14
38.0	48.0	<u>Granodiorite</u> Medium grained, greenish grey, well chloritized.	3020	285	290	5	0.52
48.0	65.2	<u>Aplite</u> Same as section 25-38.	3021	290	295	5	0.70
65.2	97.0	<u>Diorite</u> Same as section 38-48, but more massive.	3022	295	300	5	0.69
97.0	124.0	<u>Granodiorite</u> Medium grained, phasing to diorite near end of section.	3023	375	380	5	0.44
124.0	132.0	<u>Andesite</u> Fine to medium grained, siliceous at the contact.	3024	380	385	5	0.46
132.0	287.0	<u>Andesite</u> Medium grained, grey to greyish green, well chloritized and carbonatized, some quartz, severely brecciated zones, small diorite intrusive dyke @ 174.5-175.5, minor sulphides.	3025	385	390	5	0.47
287.0	403.0	<u>Andesite</u> Same as above, being well chloritized, with flow structure in parts, and short sections of pyroxenite.	3026	390	395	5	0.45
403.0	421.0	<u>Peridotite</u> Medium-grained talcose, light grey; with light sulphides.	3027	410	415	5	0.33
421.0	425.2	<u>Aplite Dyke</u> Same as previous similar section.	3028	415	421	6	0.34
425.2	446.0	<u>Peridotite</u> Same as section 403 - 421.	3029	430	435	5	0.20
446.0	470.0	<u>Sediments</u> Fine-grained, cherty bands, with some sulphides.	3030	435	440	5	0.23
470.0	499.0	<u>Hornblendite</u> Medium-grained, dark grey to black, scattered fine-grained sulphides.	3031	440	445	5	0.13
499.0	571.0	<u>Dacite</u> Fine-grained, light grey, partly epidotized, carbonatized, some talcose, very minor sulphides.	3032	445	450	5	0.04
571.0	634.0	<u>Aplite Dyke</u>	3033	460	465	5	0.01
			3034	465	470	5	0.04
			3035	480	485	5	0.11
			3036	551	558	7	0.02



H. A. Pearson

DRILLED BY: Bradley Bros. Drilling
 STARTED Sept. 18, 1965
 COMPLETED Oct. 1, 1965

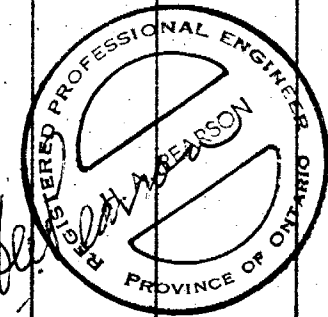
HOLE NO. A-8
 PROPERTY Texmont Mines Limited
 Bartlett - Geikie

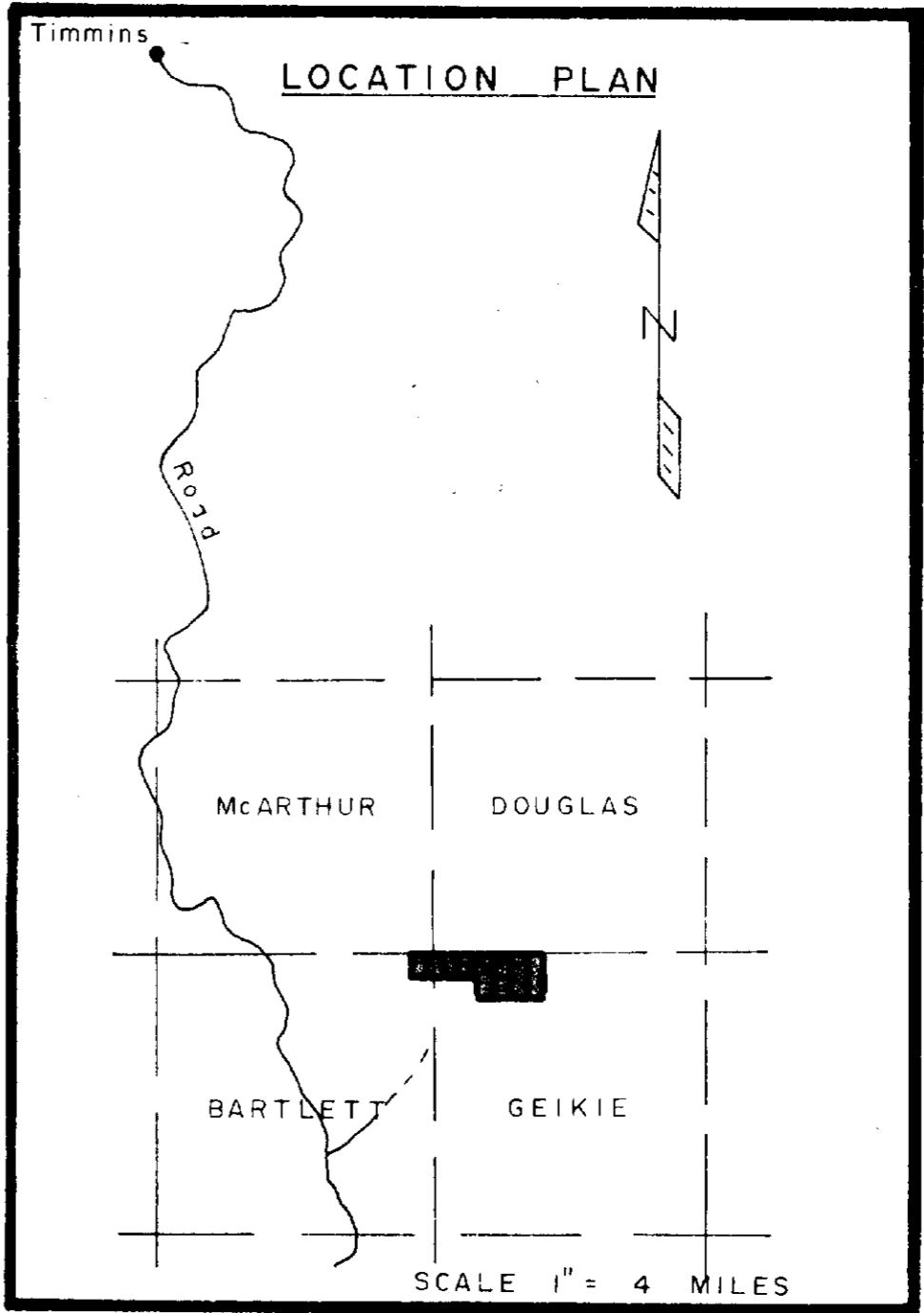
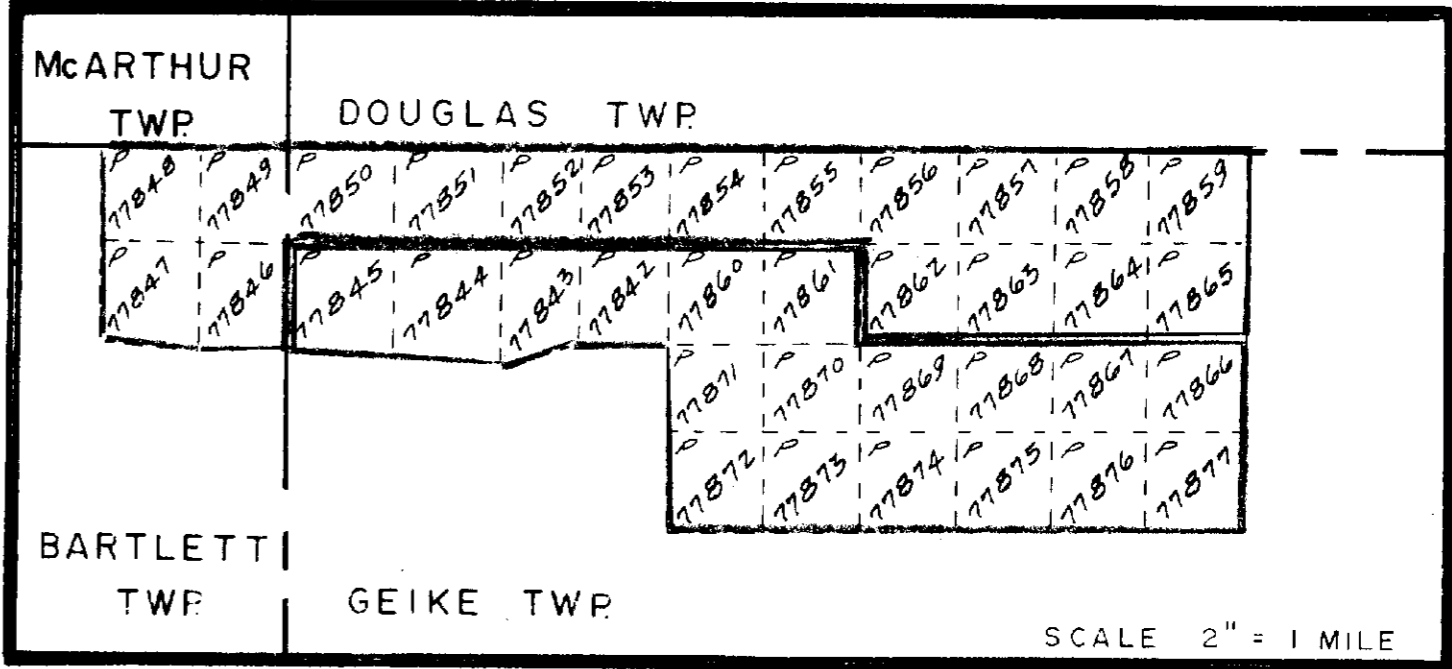
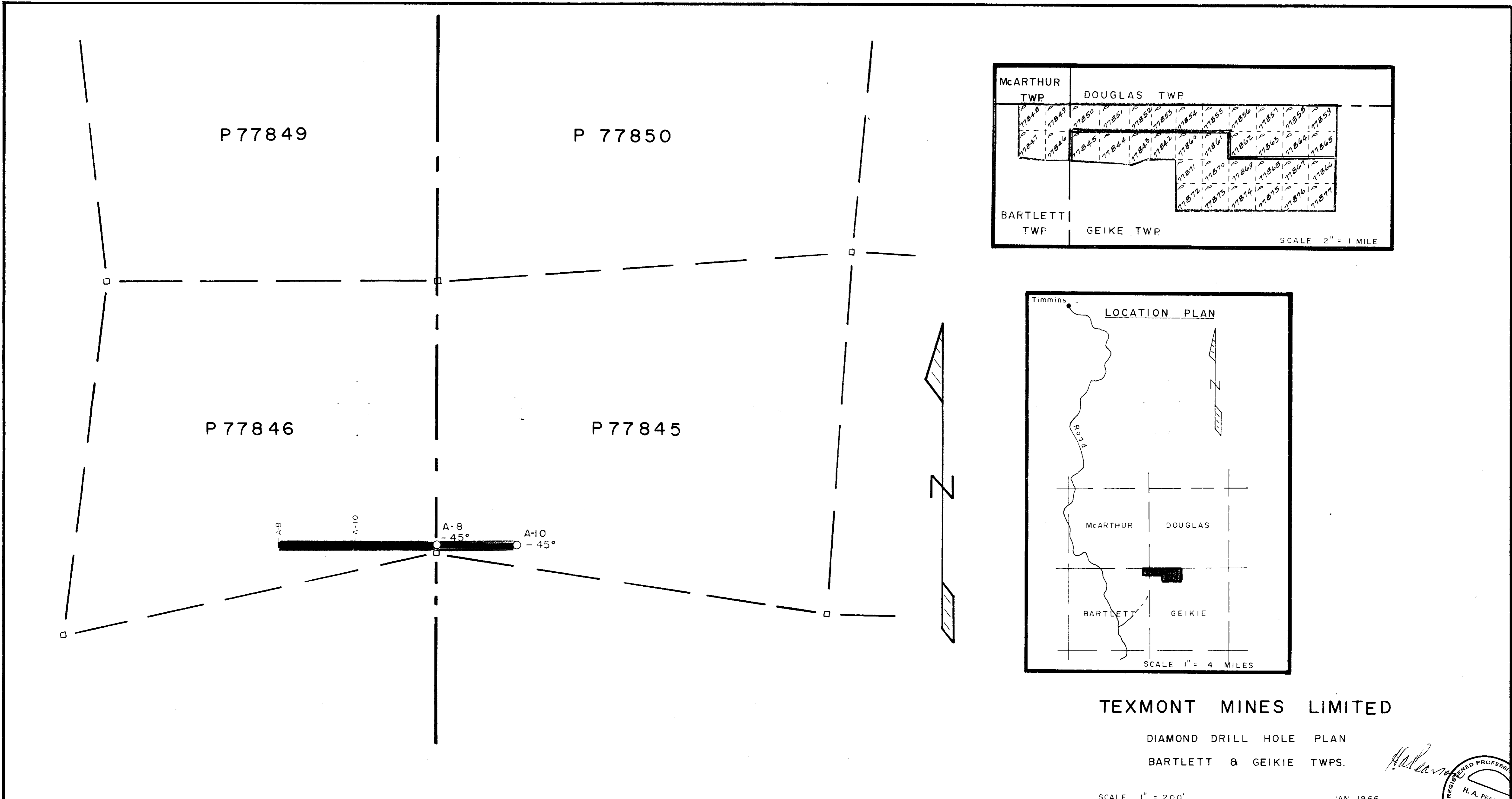
DIP - 45°
 700' - 43°
 800' - 45°

BEARING Due West
 LAT. 2600' N of 5 mile post
 DEP. On Baseline

ELEV. _____
 LOGGED BY: H.A. Pearson, P.Eng.

FOOTAGE		DESCRIPTION	CORE				
FROM	TO		SPL. NO.	FROM	TO	WIDTH	GRADE
634.0	721.0	Dacite Same as section 499 - 571.					
721.0	834.0	Andesite Fine to medium-grained, well chloritized, very little sulphides.					
834.0		END OF HOLE					





TEXMONT MINES LIMITED

DIAMOND DRILL HOLE PLAN

BARTLETT & GEIKIE TWPS.

SCALE 1" = 200'

JAN 1966

