



42A03NE0105 13 BARTLETT

010

Diamond Drilling

Township of BARTLETT

Report NO 13

Work performed by: Paymaster Consolidated

Claim NO	Hole NO	Footage	Date	Note
P 43269	1	509.0'	Jan/58	
	B-9	629.0'	Jan/58	
P 43273	B-2	800.0'	Jan/58	
P 42923	3	623.0'	Jan/58	
	B-6	444.0'	Nov/58	
P 43272	B-4	356.0'	Apr/59	
	B-10	453.0'	Apr/59	
P 43270	B-5	315.0'	Nov/58	
	B-11	704.0'	Apr/59	
P 42922	B-7	194.0'	Dec/58	
P 42920	B-8	29.0'	Dec/58	

5056'

Notes:

PAYMASTER CONSOLIDATED MINES, LTD.

(NO PERSONAL LIABILITY)

DIAMOND DRILL RECORD

HOLE NO. 1 Bartlett SHAFT NO. Surface DATE January 24, 1958

LOCATION Claim 43269, 3600 N. 2935 N. DIRECTION N. 49° E. DIP -45°

SAMPLE NO.	Geology DESCRIPTION	FOOTAGE	WIDTH	VALUE OZ. TO
0-20	Casing			
20-54	Dark Agglomerate, light pebbles mostly $\frac{1}{4}$ " and under, some 1" diameter.			
54-61	Iron formation, massive pyrrhotite			
61-62	Agglomerate			
62-66	Medium grained diorite			
66-70	Agglomerate			
70-89	Dark fine grained massive diorite with local tiny str.			
89-95	Banded iron formation, magnetite & silica, pyrrhotite at 90'.			
95-100	Crystalline dark diorite			
100-103	Pyrrhotite and quartz str. in altered contact.			
103-155	Fine grained syenite-diorite, hard. 153-4 Feldspar porphyry			
155-169.5	Banded iron formation cut at 45°e. 157' sphalerite composes 1 core for 4" with pyrrhotite, glassy quartz older than white quartz, 4" in-157' 60% siliceous with magnetite, a little chalcoc, chalcopyrite at 159'			
169.5-176	Fine grained diorite lamprophyre.			
176-198	Light syenite porphyry with faint feldspar phenocrysts.			
198-227.5	23' of core; I.P. cut at 50°, 10% magnetite, 213' 8" lamp dyke.			
227.5-230	Fine grained gabbro			
230-254+255-256	Medium grained gabbro unaltered contacts at 35°			
254-5+ 256-323	Dark feldspar porphyry 2" light phenos. Banding in porphyry at contact suggest porphyry younger. 2" inclusion at 280'			
323-350 374)	Medium grained gabbro, feldspar phenos in contact cut at 35°			
374-381	Dark feldspar porphyry			
381-382	Inclusion probably diorite			
382-399	Dark feldspar porphyry			
399-400	Agglomerate inclusion			
400-475	Dark feldspar porphyry			
410-475	Light very fine grained siliceous intrusive, 450-455 G.C.			
475-499	Slightly crystalline and light pinkish locally.			
499-509	Reddish fine grained syenite.			
509	End of hole			

Bartlett

PAYMASTER CONSOLIDATED MINES, LTD.
(NO PERSONAL LIABILITY)

file
P. 43572

DIAMOND DRILL RECORD

HOLE NO. 1 SHAFTHOLE Bartlett DATE November 14, 1957

LOCATION Claim 43272, 3000' N., 2935' N. DIRECTION N. 53° W. DIP 45°

SAMPLE NO.	DESCRIPTION	FOOTAGE	WIDTH	VALUE OZ. TON
63301	Diorite, Qtz diorite, bluish Qtz vein 2% pr	20' - 25'	60	Ni-ni
2	Diorite, 1% pyrrhotite	25' - 30'	60	.01
3	Diorite, 1% pyrrhotite	30' - 35'	60	Ni-ni
4	Diorite, a little pyrrhotite	35' - 40'	60	Ni-ni
5	Diorite, 1% pyrite	40' - 45'	60	tr
6	Greenstone, a little sulphide	45' - 50'	60	tr
7	a little pyrite in quartz stringers	50' - 54'	48	tr
8	Black iron formation with chalc & pyrrho str	54' - 55'	12	.02
9	Black I.F. 10% Pr, bluish Qtz str	55' - 61' core	66"	Ni-ni
63310	Black I.F. bluish Qtz, pyrrho, chalc	61' - 62' 2"	14	.01
63312	Massive greenstone, a little sulphide	67' - 70'	36	Ni-ni
3	as above	70' - 76'	72	tr
4	Green lava, a few sulphide-Qtz str, pink spots	76' - 78'	24	Ni-ni
5	Dark feldspar porphyry, a little sulphide	78' - 83'	60	.01
6	Green lava, Qtz str, sulphide specks	83' - 89'	72	tr
7	Bluish Qtz veins with Pr 2" str, ch specks Mg.	89' - 91'	24	Ni-ni
8	Cherty bluish Qtz str, Mg, Pr.	91' - 94'	36	.01
9	Bluish Qtz vein, Pr, Ch, Mg.	94' - 95'	12	.01
63320	Vein quartz, 5% pyrrhotite, Mg, Chalcopyrite	95' - 96'	12	tr
1	Greenstone, Qtz str, carb str, a l. sulphide	96' - 100'	48	tr
2	Dioritic gabbro, 5% Pr, Mg, Ch.	100' - 103'	36	Ni-ni
3	Greenstone, Qtz-ch str, a little sulphide.	103' - 105.5'	30	tr

Sampled by Geza Pagonyi and C. S. Longley,

PAYMASTER CONSOLIDATED MINES, LTD.

(No Personal Liability)

DIAMOND DRILL RECORD

HOLE NO. 1 SHAFT NO. Bartlett DATE November 14, 1957.

LOCATION Claim 43272, 3600' E. 2935' North DIRECTION N.53° W. DIP 45°

Sample No.	PAGE 2.	Description	Footage	Width	Value Oz. Ton
63324		Porphyry, Bluish quartz, a little sulphise	105.5' - 110'	54	.01
5		Porphyry, qtz strs, a little sulphide	110' - 118'	96	tr.
6		Porphyry, small strs, a little sulphide	118' - 120'	24	.01
7		Massive crystalline greenstone	125' - 130'	60	tr.
8		Quartz porphyry, narrow bluish qtz strs	181' - 186'	60	tr.
9		Narrow I.F. strs. Pyrite and magnetite	225' - 227.5'	30	Ni-ni
30		Dark feldspar porphyry or porphyrite	260' - 265'	60	.01
1		Dark Feldspar porphyry, Qtz. strs. a l. py	280' - 285'	60	tr.
2		Dark Feldspar porphyry, a l. sulphide	305' - 310'	60	Ni-Ni
3		Diorite, a few strs., a little sulphide	335' - 340'	60	Ni-Ni
4		Diorite, Qtz. strs., a little sulphide	365' - 370'	60	Ni-Ni
5		Quartz porphyry, a little sulphide	385' - 390'	60	.02
6		Quartz stringers in grey porphyry	420' - 425'	60	tr.
7		Quartz strs in grey porphyry, a little pyrite	425' - 430'	60	.01
8		Cherty iron formation with pyrite and pyrrhotite	198' - 203'	60	.02
62551		Fine grained acid intrusive	470' - 475'	60	tr.
2		Pink felsite, a little hornblende & Biotite	502' - 509'	84	tr.
		END OF HOLE 509'			

PAYMASTER CONSOLIDATED MINES, LTD.

(No Personal Liability)

DIAMOND DRILL RECORD

File
P. 43269

Drilled Dec. 1 to 6, 1958

HOLE NO. B-9 SHAFT NO. Surface DATE December 29, 1958
 Bartlett Township Claim 43269

LOCATION Departure: 3784 E. Lat: 4015 N. DIRECTION N. 45° E. DIP -55°

Sample No.	Description	Footage	Width	Value Oz. Ton
9473	A little pyrite in sugary quartz	235' - 240'	60	Au-.01
4	1-2% pyrite in sugary quartz	240' - 245'	60	Au-tr
9469	Heavy pyrite and pyrrhotite	247' - 252'	60	Cu-.04
9470	A little pyrite and pyrrhotite in diorite	385' - 390'	60	Ni-.02%
1	A little pyrite in diorite	405' - 410'	60	Au-tr
9472	A little pyrrhotite	573' - 578'	60	Cu-.04%
	End of hole 629'			
	Geology			
0-30	Casing			
30-140	Coarse medium grained gabbro 1/8" crystals			
140-185	Medium to fine grained gabbro			
185-196	Very fine grained gabbro, contact at 20°			
196-202	Iron formation and agglomerate cut at 10-20°			
202-212	Agglomerate with iron formation cut at low angle, 206-208 G.C.			
212-217	May be fine grained diorite			
217-247	Acid agglomerate, 80% quartz, 2" magnetite at 223.5'			
247-254	Agglomerate with local heavy pyrrhotite			
254-314	Fine medium grained diorite			
314-593	Medium grained bluish grey diorite, numerous 1/8" feldspar phenocrysts and some 1/8" quartz phenocrysts			
400-415	Shows mottling suggestive of agglomerate pebbles, 426-7, Hbse need			
470-471	Sheared zone, may be inclusion, hbse needles.			
523-526	Fine grained diorite with quartz.			
593-622	Fine grained uniform diorite with some feldspar phenocrysts.			
	611-617 Some pyrite			
	616-617 Coarse pyrite and pyrrhotite			
622-629	Medium grained diorite with feldspar phenocrysts.			
629	End of hole			
	Logged by J. G. Pollard and C. S. Longley.			
	<i>C. S. Longley.</i>			

Nett

PAYMASTER CONSOLIDATED MINES, LTD.

(NO PERSONAL LIABILITY)

DIAMOND DRILL RECORD

*File
P. 43273*

HOLE NO. 2 Bartlett SHAFT NO. Surface DATE January 27, 1958

2260

LOCATION Claim 43273, ~~2388~~ North, 3350 East DIRECTION N. 38° E. DIP -45°

SAMPLE NO.	Geology	DESCRIPTION	FOOTAGE	WIDTH	VALUE OZ. TO
0-15	Casing				
15-71	Fine medium grained gabbro, 1/16" crystals.	pyrrhotite 40'-45'			
71-75.5	Fine grained dark qtz porphyry dyke, a l. py.		75.5 out at 55°		Chilled
75.5-90	Fine to f.r.g. gabbro, local 1/16" crystals.				con.
90-190	Medium grained gabbro, 1/8" crystals,		6" acid dyke out at 60°		
190-195	Fine grained gabbro, narrow quartz str.				
195-239	Medium grained gabbro, 1/8" crystals				
239-246	Dark lamprophyre,	246' out at 40°			
246-273	Medium grained gabbro, 1/8" crystals				
273-288	Fine to fine medium grained gabbro, 1/16" crystals				
288-293	Dark hornstone, chilled contact of baked lava, crystalline remnants				
293-327	acid lava, probably agglomerate, porphyrite at 294 & 304, 2" pebbles at 325 & 326.				
327-342	Uniform fine grained with epidote stringers and alteration				
342-363	Fine medium blue green syenite-diorite				
363-370	Intense epidote alteration with epidote stringers				
	327 to 370 seemed to be an intrusive of syenite-diorite composition with epidote as an original mineral				
370-385	acid lava with quartz stringers				
385-390	Fine grained lava cut longitudinally				
390-410	Finely crystalline uniform diorite				
410-460	Fine medium grained diorite				
460-504	Fine to fine medium grained diorite,	483-4" qtz-axinite str	cut	40°	
504-510	Agglomerate				
510-544	Acid coarse grained agglomerate				
544-565	Acid intrusive, dark felsite, local banding	at 40°			
565-601	Fine grained acid intrusive, light felsite				
601-610	Slightly darker felsite				
610-617	Ground core				
617-622	Quartz porphyry, very fine grained.				
622-642	Feldspar porphyry, more crystalline.				
642-658	Quartz and feldspar porphyry				
658-659	Dark biotite lamprophyre dyke, porphyry reddish on contacts				
659-685	Dense porphyry				
685-686	Probably dark lava inclusion resembles diorite				
686-703	Fine grained porphyry, 692-695 Ground core.				
703-800	Reddish feldspar porphyry becoming darker and more crystalline				at 770.

800 End of hole.

D.H. 2A Claim 43273, 2450 N. 3150 E. Dir: West. Dip: 50°

Hole 75' deep stopped by boulders.

PAYMASTER CONSOLIDATED MINES, LTD.

(NO PERSONAL LIABILITY)

DIAMOND DRILL RECORD

HOLE NO. 2 SHAFT NO. Bartlett DATE January 27, 1958
 LOCATION Claim 43273, 2260 N. 3350 East DIRECTION N. 38° W. DIP -45°

SAMPLE NO.	DESCRIPTION	FOOTAGE	WIDTH	VALUE OZ. TO
62553	Small strs, a little pyrite in Xline gabbro	23' - 30'	60	.01
4	Local pyrrhotite in gabbro	30' - 30 '33'	36	tr Ni-Mt
5	A little pyrite	35' - 40'	60	tr
6	A little pyrrhotite	40' - 45'	60	Ni-ni
7	Fine grained g abbro	45' - 50'	60	tr
8	Very fine grained diorite, a little pyrrhotite	70' - 75'	60	tr
9	Crystalline gabbro	110' - 115'	60	tr
62560	Crystalline gabbro	120' - 125'	60	tr
1	Fine carbonate strs in gabbro	155' - 160'	60	tr
2	Carb strs, a little pyrrhotite	167' - 175'	96	tr
3	Fine strs of yellowish qtz-carb, pyrrhotite	175' - 180'	60	tr
4	Pyrrhotite	180' - 185'	60	tr
5	Small stringers	193' - 200'	84	tr
6	Greenish quartz stringers	210' - 215'	60	tr
7	Epidote and quartz strs in m.g. gabbro	220' - 225'	60	Ni-tr
8	Fine grained diorite	230' - 235'	60	tr
9	1/16" reddish carb strs	240' - 245'	60	tr
62570	Gabbro	270' - 275'	60	Ni-tr
62501	Banded lava, pyrite	305' - 310'	60	tr
2	Stringers, a little sulphide	320 - 325	60	tr
3	Stringers, a little sulphide	355' - 360'	60	tr
4	Carbonate, rose quartz strs, pyrite, epidote	365' - 370'	60	tr

PAYMASTER CONSOLIDATED MINES, LTD.

(NO PERSONAL LIABILITY)

DIAMOND DRILL RECORD

HOLE NO. 2

SHAFT NO. Bartlett

DATE January 27, 1958

LOCATION Claim 43273, 2260 North, 3350 East

DIRECTION N. 38° W.

DIP -45°

page 2

SAMPLE NO.	DESCRIPTION	FOOTAGE	WIDTH	VALUE OZ. TO
62505	Acid lava, a little pyrite	370' - 375'	60	tr
6	As above	375' - 380'	60	tr
7	Acid lava, some carb str, a little pyrite	380' - 385'	60	tr
8	Quartz str, a little sulphide	405' - 410'	60	tr
9	A little pyrite	425' - 430'	60	tr
62510	Quartz & carb str, a little sulphide	435' - 440'	60	tr
1	Quartz str, pyrrho, pyrite, & chalco in str	475' - 481.5'	78	Ni-Ni
2	Diorite	485' - 490'	60	tr
3	Quartz, pyrite, chalco, pyrrhotite	500' - 505'	60	tr
4	A little pyrite	515' - 520'	60	.01
5	Pyrite, pyrrhotite, chalco	540' - 545'	60	.01
62851	G lassy qtz str, a little pyrite	575' - 580'	60	tr
62852	A little pyrite	607' - 617'	120	tr
3	A little pyrite	637' - 642'	60	.02
4	Fine crystalline pyrite	655' - 660'	60	tr
5	A little pyrite	688' - 693'	60	tr
6	Quartz str	720' - 725'	60	tr
7	A little pyrite	696' - 703'	84	.02
8	Quartz str, a little pyrite	747' - 753'	72	.01
9	Fine veins of quartz, a little pyrite	776' - 781'	60	.02

End of hole 800'

PAYMASTER CONSOLIDATED MINES, LTD.

(NO PERSONAL LIABILITY)

DIAMOND DRILL RECORD

*File
P-42923*

HOLE NO. 3 Bartlett SHAFT NO. Surface DATE January 27, 1958

LOCATION Claim 42923, 5600 North, 4600 East. DIRECTION West. DIP -45°

SAMPLE NO.	Geology DESCRIPTION	FOOTAGE	WIDTH	VALUE OZ. TO
0-20	Casing			
20-22.5	Agglomerate with pyrite			
22.5-45	Dark feldspar porphyry with 1/8" to 1/4" light green feldspar phenocrysts. Banding, Quartz & magnetite at 36', pyrite and pyrrhotite at 37', 38', 2 and 43'. Looks like box mixed.			
45-52	Dark feldspar porphyry			
52-70	Agglomerate with quartz-pyrite stringers, Epidote 67'-95' 1" pebbles.	55-58		Feldspar phenocrysts
70-95	Agglomerate with quartz-epidote strcs & alteration, local pyrite			
95-113	Altered agglomerate with some pyrite	97-101		F.G. intrusive
113-128	Dark feldspar porphyry with epidote phenocrysts may be due to alteration			
128-145	Agglomerate out at 70° with quartz strcs up to 1', pyrite			
145-195	Agglomerate with pyrite, 1" pebbles	170-173		Very dark basic with pyrr
195-211	Coarse agglomerate with quartz			
211-231	Fine grained dark diorite with pebble remnants			
231-235	Coarse agglomerate			
235-237	Diorite			
237-279	Coarse dark agglomerate, Magnetite? banded at 45°, 279 con at 35°			
279-315	Medium grained epidote diorite porphyry			
315-319	Fine grained epidote diorite			
319-321	Fine grained gabbro			
321-395	Fresh medium grained gabbro, 1/8" crystals.	367-8		Qtz strcs with ep.
395-411	Light coarse grained gabbro.			
411-420	Fine medium grained gabbro.			
420-427	Medium grained gabbro			
427-503	Fine grained chilled contact of gabbro,	503-		6" zoisite alt zone.
503-538	538 Highly altered agglomerate, 1/8" feathery feldspar-epidote xls. 6" epidote alteration at 504 & 519.			
538-557	Dark feldspar porphyry, core uniformly dark, contact at 557 at 45°			
557-577	altered agglomerate as 503-538, may be intrusive, 565 strcs at 45°			
577-597	Agglomerate and breccia out at 45° approaching iron formation. Pyrite, pyrrhotite and bands of magnetite mostly siliceous with angular fragments up to 3".			
597-605	Dark fine grained porphyry slightly more fine than 603 and beyond.			
605-608.5	Banded agglomerate and/or tuff.			
608.5-623	Very dense acid intrusive, chilled at 608.5'			
	623 End of hole.			

PAYMASTER CONSOLIDATED MINES, LTD.

(No Personal Liability)

DIAMOND DRILL RECORD

HOLE NO. 3 Bartlett SHAFT NO. Surface DATE January 27, 1958

LOCATION Claim 42923 4600 East, 5600 North DIRECTION West DIP -45°

Sample No.	Description	Footage	Width	Value Oz. Ton
62860	Quartz, magnetite, pyrite	20' - 25'	60	tr
1	Quartz, pyrite, pyrrhotite, magnetite	25' - 30'	60	tr
2	Quartz str. pyrite, pyrrhotite, magnetite	30' - 36'	72	tr
3	Pyrite, pyrrhotite, quartz	36' - 44'	96	tr
4	Bluish quartz, pyrite, pyrrhotite, magnetite	45' - 50'	60	tr
5	As above	50' - 55'	60	tr
6	Bluish quartz, pyrite, pyrrhotite	55' - 60'	60	tr
7	Bluish quartz, pyrite, less pyrrhotite	60' - 65'	60	tr
8	Bluish quartz, pyrite, pyrrhotite	65' - 70'	60	tr
9	Quartz-epidote, pyrrhotite, pyrite	70' - 75'	60	tr
62870	Bluish quartz, epidote, carbonate, pyrrhotite, py.	75' - 80'	60	tr
1	Bluish quartz, epidote, pyrrhotite, fine py	80' - 85'	60	tr
2	Bluish quartz, less epidote, pr, pyrite	85' - 90'	60	tr
3	Bluish quartz, pyrrhotite, fine pyrite	90' - 95'	60	tr
4	Mottled agglomerate, a little pyrite	95' - 100'	60	tr
5	Agglomerate, a little fine pyrite	100' - 105'	60	tr
6	Qtz str. epidote, pyrite	105' - 113'	96	tr
7	Fine disseminated pyrite	125' - 130'	60	tr
8	Streaks of pyrite	130' - 139'	108	tr
9	Bluish qtz str. magnetite str. pyrrhotite	139' - 145'	72	tr
62880	A little pyrite	145' - 155'	120	tr
1	Some pyrite and pyrrhotite	155' - 170'	180	tr
2	Sugary quartz in dark agglomerate, some pyrite	170' - 180'	120	tr
3	Sugary quartz str. 1' bleb of pr & cube pyrite	180' - 190'	120	tr
4	Quartz and magnetite str. pyrrhotite dis.	190' - 200'	120	tr
5	Dark agg. dis pyrite, some pyrrhotite str	200' - 209'	108	tr
6	Massive agglomerate, 2" fragments	209' - 215'	72	tr
7	Quartz, pyrrhotite, pyrite str, a l chalc.	231' - 235'	48	tr
8	Quartz, pyrrhotite, magnetite str, py specks	236.5' - 245'	102	tr
9	Quartz, pyrite, pyrrhotite str, a little chalc	225' - 230'	60	tr
62890	Siliceous agglomerate, a little pyrite End of hole 623'.	577' - 582'	60	.01

PAYMASTER CONSOLIDATED MINES, LTD.

(No Personal Liability)

DIAMOND DRILL RECORD

Bartlett Township

HOLE NO. B-4 SHAFT NO. Surface DATE April 3, 1959

LOCATION Claim 43272, Line 3600N. 215' E. B.L. 3400E DIRECTION West DIP -45°

Sample No.	Description	Footage	Width	Value Oz. Ton
	Hole drilled by Wilfred Broehr, North Bay, March 1959			
62576	Quartz with pyrrhotite and pyrite	30' - 35'	60	tr
7	Agglomerate, some pyrrhotite	67' - 72'	60	tr
8	Agglomerate with quartz, pyrite, and pyrrhotite	126' - 131'	60	tr
9	Quartz, pyrite, and pyrrhotite	176' - 181'	60	li. tr u. tr
62580	Quartz, magnetite, 2% pyrrhotite	183' - 188'	60	u. tr u. O. O.
1	9" pr at 279, remainder 10% pr, qtz str chalcoc	Nickel trace 275' - 280'	60	u. O. O. u- tr
	End of hole 356'			
	Geology			
0-29	Casing in boulders and rotten ledge.			
29-40	Agglomerate, much quartz,			
40-55	M.g. agglomerate, matrix very dark.			
55-56	G.C.			
56-60	Uniform f.m.g. diorite			
60-101.5	M.g. agglomerate, 2" frags, 65-7 f.g. 10' contact at 40°			
101.5-103.5	Uniform diorite, 103' contact at 65°			
103.5-114	Medium agglomerate, light and dark green			
114-115	Mineralized epidote.			
115-121	Speckled acid agglomerate, frags up to 1"			
121-122	Fin diorite			
122-124	Banded I.F. with pyrrhotite			
124-141	Coarse agg. I.F. frags, 6" acid intrusive at 1388			
141-144.5	Uniform f.g.g. diorite, 144.5 con at 10 30°			
144.5-152	Sil agg. some pyrrhotite			
152-189	Banded I.F. with magnetite, Fr. up to 1" out at 45°, 157-8 acid int:			
189-260	Feldspar porphyry of diorite, 189 contact at 40°			
260-263	Iron formation brecciated by diorite out at 65° heavy pyrrhotite			
263- 270.5	Feldspar porphyry of diorite out at 65°, heavy			
270.5-280	Banded I.F., qtz str with chalcoc, heavy pyrrhotite.			
280-283	Agglomerate			
283-285	Chlorite,			
285-356	Medium grained gabbro.			
	356 End of hole.			

Core Logged by C. S. Longley,

C. S. Longley

PAYMASTER CONSOLIDATED MINES, LTD.

(No Personal Liability)

DIAMOND DRILL RECORD

HOLE NO. Bartlett 10 SHAFT NO. Surface DATE April 3, 1959

LOCATION Claim 43272, Line 3600N. 215' E. Line 3600E. DIRECTION West DIP -70°

Sample No.	Description	Footage	Width	Value Oz. To
62583	Altered Agglomerate	31' - 36'	60	tr
4	Pyrite and pyrrhotite in agglomerate	150' - 155'	60	tr
5	40% quartz, a little pyrite	226' - 231'	60	tr
6	Siliceous Iron Formation, 10% pyrite & pr.	290' - 295'	60	tr
7	Siliceous Iron Formation, 9% pyrite & pr.	306.5' - 311.5'	60	tr
8	Agglomerate remnants in diorite, 2% pyrite	313' - 318'	60	tr
9	Pyrite str cut longitudinally, 2-1" Qtz str	395' - 400'	60	tr
62591	15% pyrrhotite in I.F. breccia, a l. chalcoc	Nickel - trace 424.5' - 428'	42	Cu.0.0 Au.tr
62590	Bx. I.F. 15% pr. Qtz str with chalcoc 432-3 End of hole 453'.	Nickel - trace 428' - 433'	60	Cu.0.1 Au.tr
Geology				
0-21	Casing in boulders			
21-70	5 E. to a.g. agglomerate, much quartz			
70.5-76	Fine grained grey tuff.			
76-89	Fine to fine medium grained quartz diorite			
89-91	Fine grained tuff			
91-99	Fine to medium grained agg. 3" max. pebbles			
99-127	Coarse agglomerate 2" max.			
127-129	F.g. uniform diorite			
129-156	Coarse agg. 3" max			
156-161	F.g. uniform diorite, 161 con at 60°			
161-187	Coarse agg. 6" tuff at 180' Joint cut long	170-172		
187-195	Speckled agglomerate			
195-218	Coarse agg, I.F. fragments			
218-220	F.g. diorite			
220-253.5	Coarse agg. 3" magnetite at 251			
253.5-311.5	Banded I.F. 10% magnetite to 291'			
311.5-313	G.C.			
313-318	Diorite with agglomerate remnants,			
318-360	Feldspar porphyry			
360-423.5	Coarser porphyry, numerous 1/8" phenocrysts, joint cut long			
423.5-424.5	Brecciated agg.			
424.5-433	Brecciated I.F. 15% pr.			
433-435	Very fine grained siliceous intrusive.			
435-438	Brecciated I.F. a little pyrrhotite			
438-453	Medium grained gabbro. core mixed. 453' End of hole.			

Logged by C. S. Longley

PAYMASTER CONSOLIDATED MINES, LTD.

(No Personal Liability)

DIAMOND DRILL RECORD

HOLE NO. B-5 SHAFT NO. Bartlett DATE November 18, 1958

LOCATION Claim 43270, 3955 N. 4200 E. DIRECTION West DIP -45°

Sample No.	Geology. Description	Footage	Width	Value Oz. To
0-5	Casing			
5-25	F.G. agglomerate, most fragments 1/8"-1/4", may be porphyrite			
7-8	Quartz-pyrrhotite zone, slow cooling pyrrhotite flaky flakey			
15-16	Grey feldspar porphyry, 3/16" phenocrysts, both contacts gradational			
23-24	Quartz, 24-25 Epidote alteration.			
	Quartz bands fairly min pr plus small quantity py. At 22' fracturing shows a development of chlorite. Throughout entire length of core pyrite along fractures flattened very thin- Pyrite latest mineral.			
25-58	Coarse agglomerate, acid pebbles or fragments up to 5", 50% qtz, fair pr.			
58-62	Altered quartz diorite, dis py, some pr.			
62-75	Coarse agglomerate, altered 62-65, 1" frags.	3" TF at 83.4295'		
75-113	Coarse agglomerate, 35% quartz, pebbles up to 3" pr min throughout.			
113-116	Very fine to fine medium grained quartz diorite.			
116-150	Medium grained quartz diorite.			
150-154	F.m. to very fine grained diorite			
154-227	Coarse grained agglomerate, 2" pebbles, 191 8" siliceous zone with pyrite	218' - 227' 8.5'		
227-249	Banded iron formation cut at 65°, 1/2" magnetite bands.			
249-254	Sample 252-254 heavy pyrrhotite			
254-267	Very light colored agglomerate.			
267-269	Chlorite agglomerate.			
269-274	Sample 40% pyrrhotite with siliceous zones. 269.5 Galena.			
274-281	Banded iron formation cut at 55°.			
281-283	Fine grained diorite with pebble remnants			
283-315	Fine medium grained syenite with some phenocrysts up to 1/2"			
	311-312 Very altered			
	312-313 Fracturing longitudinally.			
Drilled by Wilfred Brochu Nov. 8-10, 1958, Logged by C. S. Longley & J.G. Pollard				
	Samples			Cu%
9460	Pyrrhotite, a little chalcocopyrite in agg	68' - 74'	72	.10
1	Some pyrrhotite and pyrite 1-2%	159.5' - 164.5'	60	.12
2	1% pyrite and pyrrhotite mostly crystalline	193.5' - 198.5'	60	.20
3	1% pyrite, a little pyrrhotite & chalco	216' - 221'	60	.32
4	252'-254' heavy pyrrhotite	249.5' - 254.5'	60	.42
5	40% pyrrhotite with siliceous zones, galena.	269' - 274'	60	.14
	End of hole 315'.			Ni- tr Pb-nil

PAYMASTER CONSOLIDATED MINES, LTD.

(No Personal Liability)

P. 43270

DIAMOND DRILL RECORD

HOLE NO. Bartlett 11 SHAFT NO. Surface DATE April 14, 1959
 Claim 43270, 54' N. line 4042 ..

LOCATION 400' East of Base line 3600 E. DIRECTION S. 86° W. DIP -70°

Sample No.	Description	Footage	Width	Value Oz. To
62592	A little pyrite in speckled agglomerate	52' - 57'	60	tr
3	Some pyrite and pyrrhotite in c.g. agglomerate	107' - 112'	60	tr
4	A little pyrite and pyrrhotite in agglomerate	210' - 215'	60	.01
5	2% pyrrhotite, 4" heavy pyrite at 283'	281' - 286'	60	tr
6	4% pyrrhotite in quartzose iron formation	331' - 336'	60	tr
7	Siliceous I.F. 10% pyrrhotite, local chalc	374' - 379'	60	tr
8	Siliceous I.F. 5% pyrrhotite	634' - 639'	60	tr
62599	Siliceous I.F. 20% pyrite & pyrrhotite, a l. ch.	639' - 644'	60	tr
	Geology End of hole 704'			
0-5	Casing ledge at 2.5'			
5-32	C.g. agglomerate, I.F. frags, some pyrite			
32-33	Acid intrusive			
33-42	C.g. agglomerate			
42-47	Fine m.g. diorite			
47-61	Mineralized speckled agglomerate, some pyrite, may be diorite matrix, ep			(stra
61-74	Coarse agglomerate			
74-90	Fine grained diorite, chilled contact at 90'			
90-126	Green agglomerate, I.F. frags, quartz 101-2, & 122-3.			
126-213	Very coarse agglomerate, 6" quartz fragments			
213-224	Fine medium grained diorite with reddish quartz str			
224-254	Coarse medium grained diorite			
254-264	Fine medium to f.g. diorite, suggestion of tops east.			
264-289	Green agglomerate			
289-293	Banded I.F. cut at 35-45°, 20% magnetite, a l. chalc at 293'			
293-336	Banded I.F. cut at 40-50°, quartzose to 297' 20% magnetite, graphite.			
336-344	Fine grained feldspar porphyry, agglomerate remnants.			
344-353	Fine grained feldspar porphyry, remnants at 349'. 353-356 Alt agg.			
353-384	Banded I.F. much altered, 15% mag. dark. 367-368 biotite lamprophyre			
384-385.5	Agglomerate			
385.5-632	Feldspar porphyry, agg remnants 390 & 395, 1/8" phenos, 6" lamp at 496 dense matrix 604-628. 85% phenocrysts 628-632, quartz eyes.			
632-644	Altered siliceous I.F. 8% pyrrhotite, a little chalc			
644-666.5	Siliceous I.F. 15% magnetite, 9" magnetite at 660'			
666.5-672	Fine to f.m.g. gabbro.			
672-704	Medium grained bluish green gabbro, 1/8" crystals 688-689 Siliceous inclusion.			

704 End.

704
 3
 727

C. S. Longley.

PAYMASTER CONSOLIDATED MINES, LTD.

(No Personal Liability)

DIAMOND DRILL RECORD

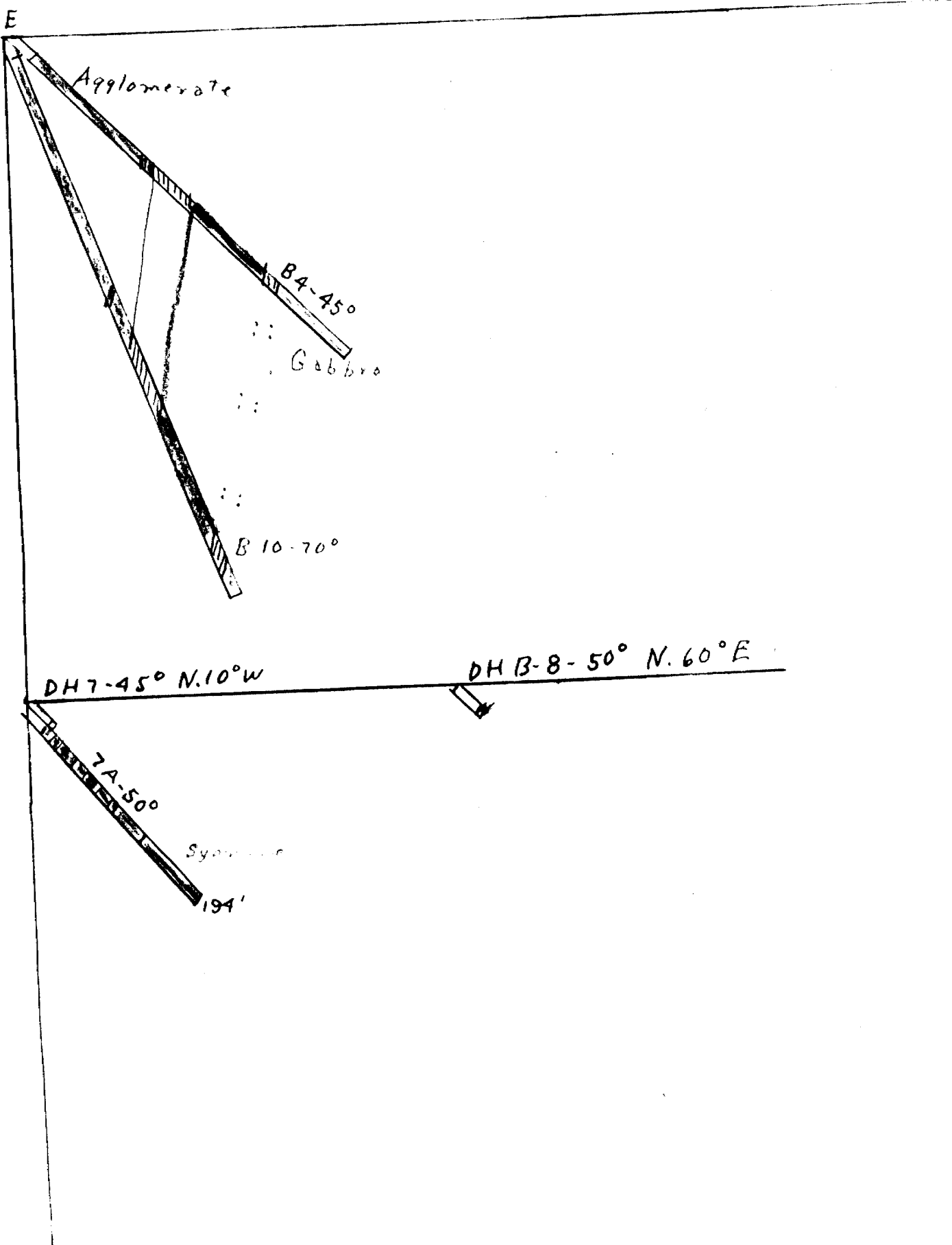
File
P-42922
~~*P-42920*~~

HOLE NO. 1958 B-7 SHAFT NO. Surface DATE December 17, 1958

LOCATION Bartlett Township, Claim 42922, 3700E, 5400 N. N. 10° W. DIP -45°

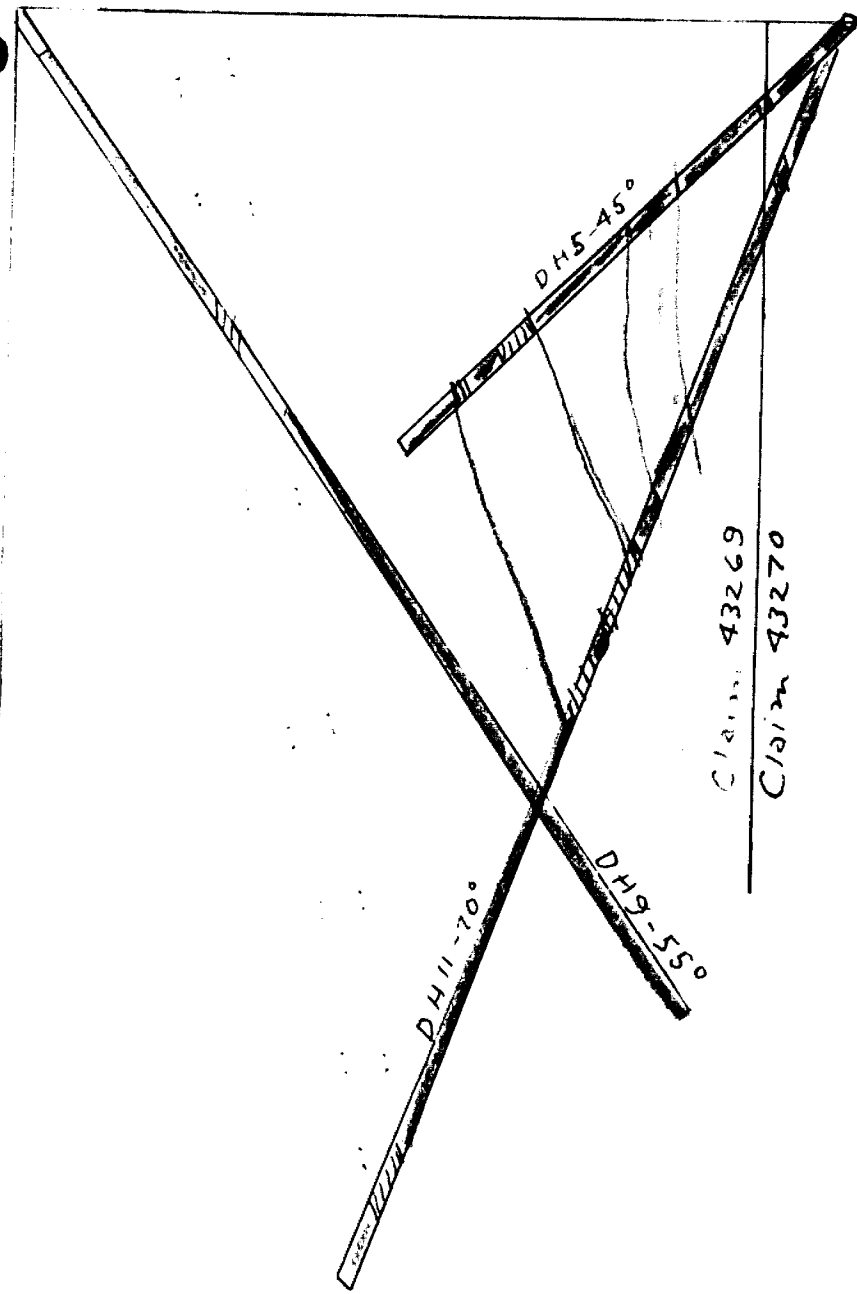
Sample No.	Description	Footage	Width	Value Oz. To
9467	Heavy pyrite & pyrrhotite mineralization	21' - 23'	24	Ni-tr Cu-.02
0-21'	Boulders			
21-23	Agglomerate heavily mineralized. Casing broke in hole at 23'. Started D.H. B-7A on same line at 50° dip.			
9468	Vein quartz with pyrrhotite locally heavy	65' - 70'	60	Ni-.02 Cu-.10
0-7	Casing			
7-20	Casing in boulders			
20-29	Agglomerate, some pyrite and pyrrhotite, Casing to 29'. I.F. cut at 35°			
29-31	Agglomerate well min with pyrrhotite, younger pyrite on fractures			
31-32	Agglomerate, sparse pyrite, magnetite bands cut at 30°			
32-37	Porphyritic grey intrusive, very altered, or f.g. greenish seds.		4"	pr.
37-54	Agglomerate, 37-39 altered and very fine grained.			
54-65.5	Diorite, porphyritic with quartz bands 1/8" cut at 40° at 64-5. Intrusive fractures cut long appear as outer rim of fault zone, 63-5 pebb			
65.5-76.5	Quartz veining cut at 10°. much pyrrhotite, 1/8" sphalerite on fractures			
76.5-95	Diorite			
95-103	Gabbro.			
103-129	Diorite			
129-131	Very fine grained chilled very acid light aplite.			
131-194	Deep reddish syenite with altered hornblende remnants.			
194	End of hole.			
Logged by J. G. Pollard and C. S. Longley.				
<i>C. S. Longley.</i>				

DH No B4 Claim 43272 3600N 215'E BL 3600E -45°W
 " " B10 " " " " " " -70°W
 " " B787A " 42922
 " " B8 " 42920 Bartlett Twp C. 82 W



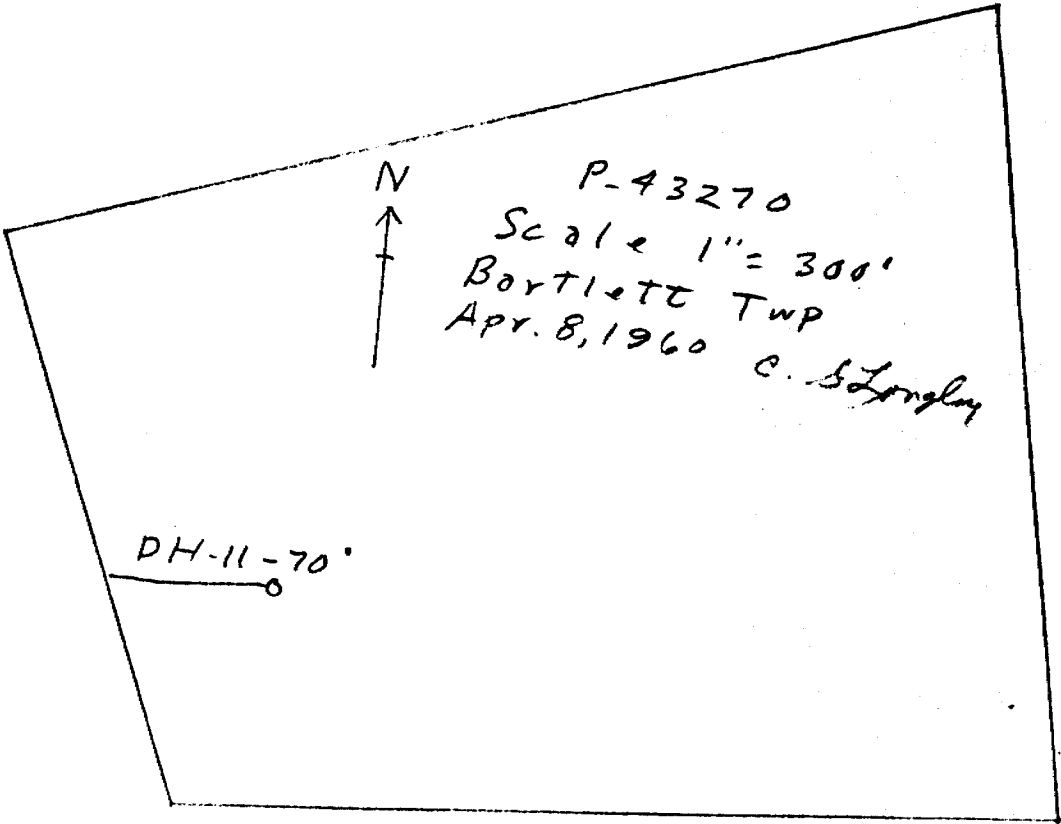
File # 43269

E



Claim 43269
Claim 43270

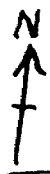
D. D. Section
Bartlett Twp.
Scale 1" = 100'
April 1959 C.S.L.



N
↑

P-43270
Scale 1" = 300'
Bartlett Twp
Apr. 8, 1960 C. S. Longley

DH-11-70'



DH8-50°

DH 6-45°

DH3-45°

DH7-45°
DH7A-50°

P-42923

P-42922

P-42918

P-43269

P-42919

P-43270

DH9-55°

DH11-70°

DH5-45°

Boomerang Lake

DH4-45°
DH10-70°

P-43271

P-43273

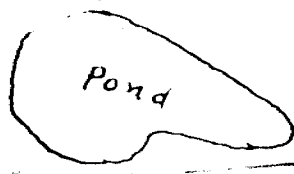
DH1-45°

P-43272

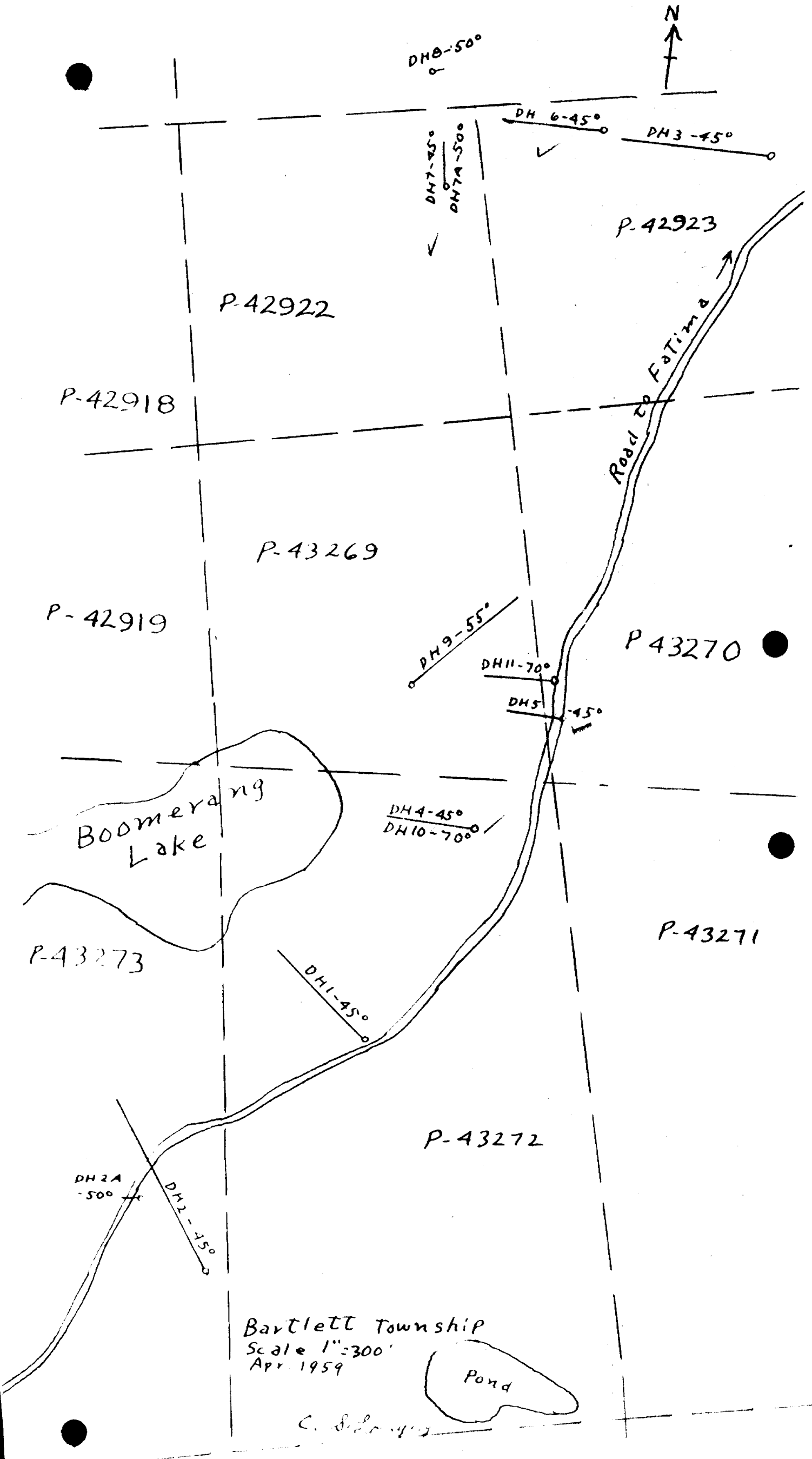
DH2A-50°

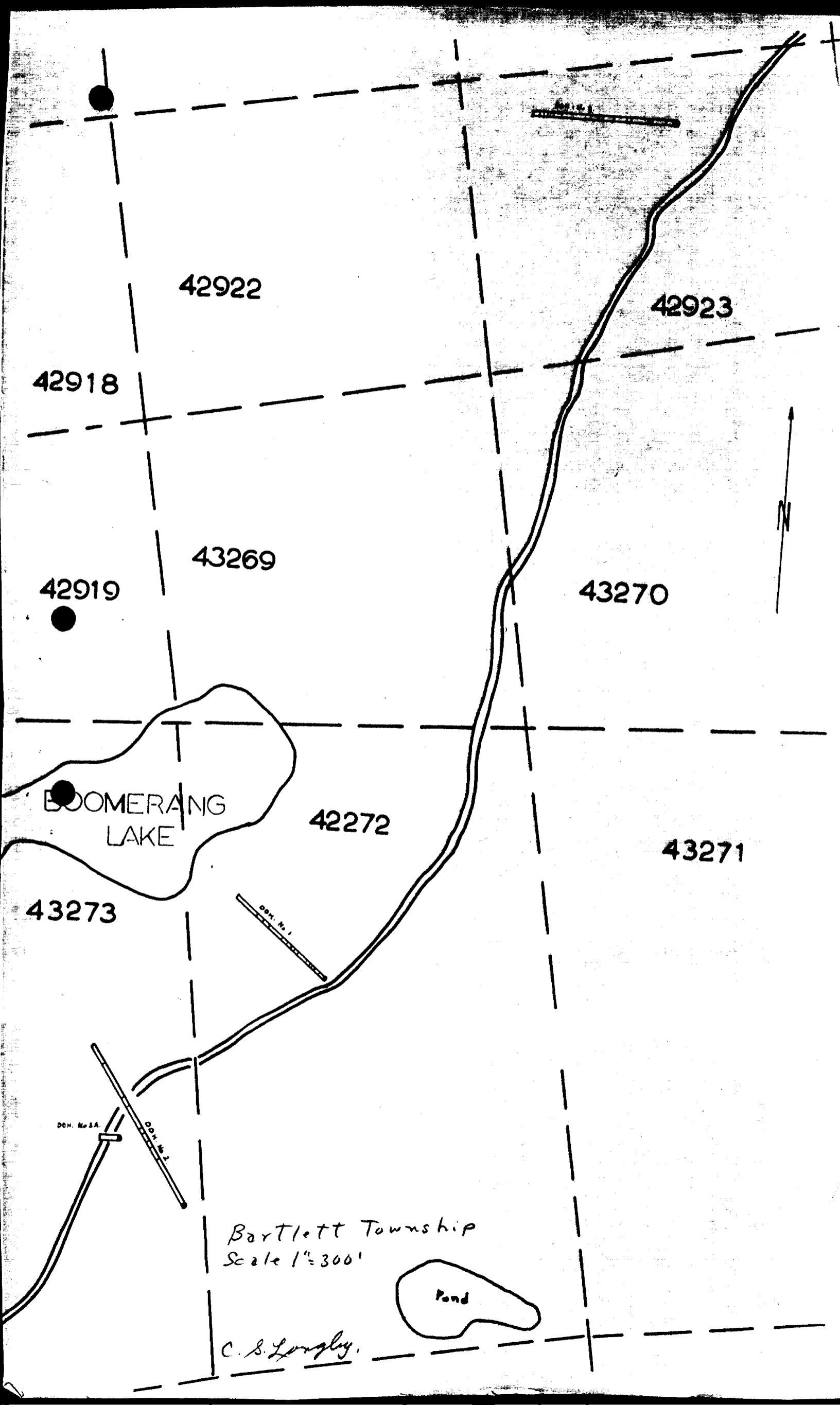
DH2-35°

Bartlett Township
Scale 1"=300'
Apr. 1959



C. S. ...





42922

42923

42918

43269

42919

43270

BOOMERANG
LAKE

42272

43271

43273

DDM. No. 2A.

DDM. No. 2

Bartlett Township
Scale 1"=300'

Pond

C. S. Longley.