

Diamond Drilling



42A03NE0500 17 MCARTHUR

010

Township of McARTHUR

Report No: 17

Work performed by: Abitibi Asbestos Company

Claim No	Hole No	Footage	Date	Note
P 319998	H-1	509'	Sept/74	(1)
	H-7	215'	Nov/74	(1)
P 320000	H-2	252'	Oct/74	(1)
	H-3	170'	Oct/74	(1)
	H-4	300'	Oct/74	(1)
P 319999	H-5	303'	Oct/74	(1)
	H-6	303'	Nov/74	(1)

7 DDH

2052'

Notes: (1) 213/74

4M

3M

2M

1M

4M

3M

2M

1M

Hopkins  
Lake

McARTHUR

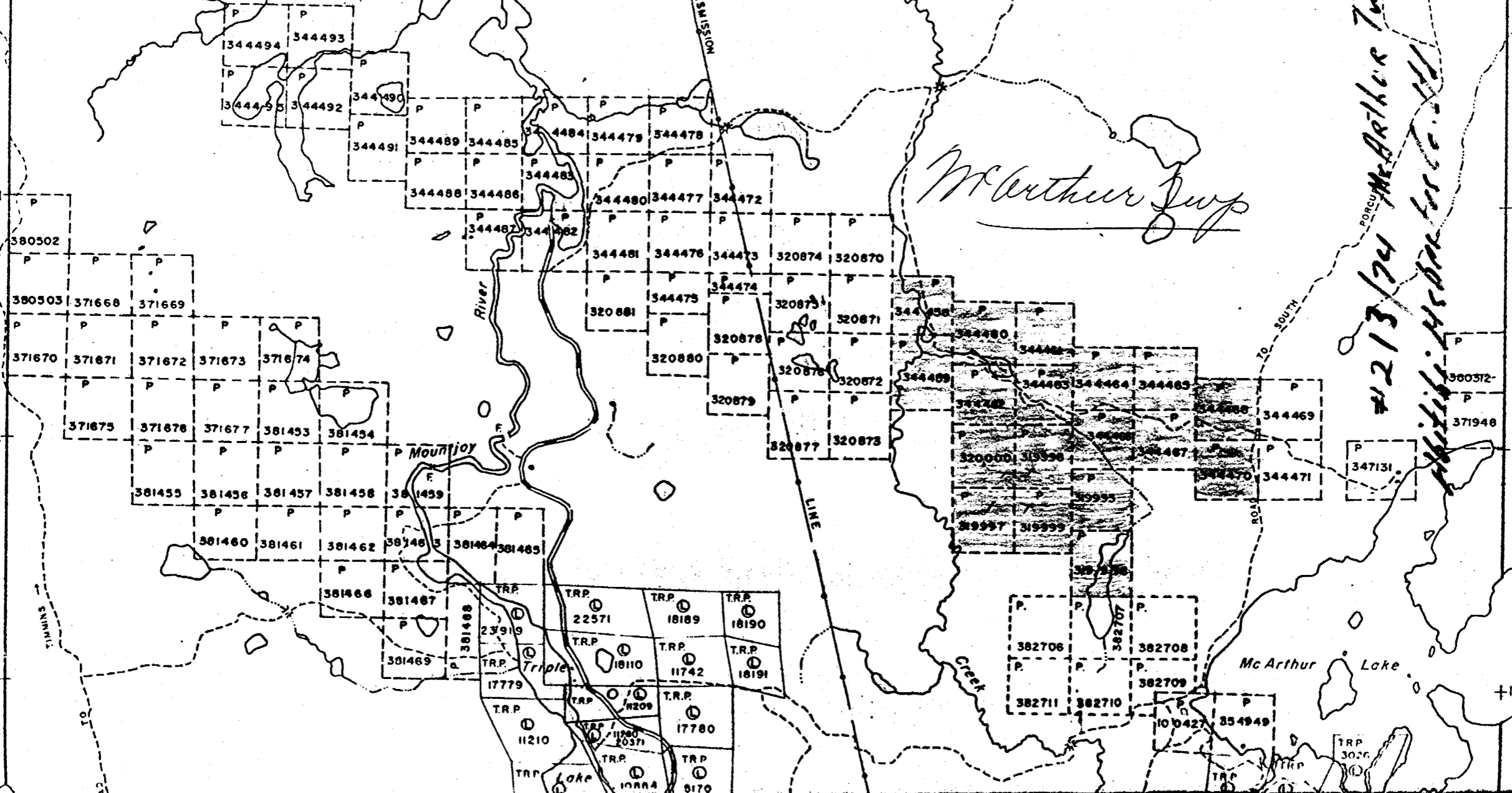
TRANSMISSION

*McArthur Sup*

#1213/74 McArthur Twp

*W. H. ...*

Douglas Twp. - M.274



PROPERTY ABITIBI ASBESTOS CO. McARTHUR TWP.

HOLE NUMBER 1

SHEET NUMBER 1

# DIAMOND DRILL RECORD

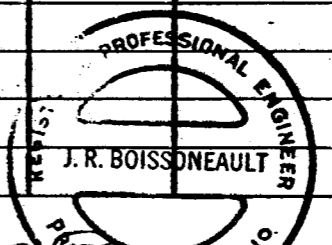
SECTION FROM 0 TO 509

P.319997

LOCATION: LAT. 60' NORTH  
 DEP. LING 1:00 WEST  
 ELEVATION OF COLLAR -30'  
 DATUM \_\_\_\_\_  
 DIRECTION AT START: BEARING SOUTH 30° WEST  
 DIP -55°

STARTED SEPT 95 / 74  
 COMPLETED OCT 1 / 74  
 ULTIMATE DEPTH 509'  
 PROPOSED DEPTH 500'

DEPTH FEET	FORMATION	SAMPLE NO.	WIDTH OF SAMPLE	GOLD %	SLUDGE GOLD %
0' - 82'	OVERBURDEN				
82' - 207'	SERPENTINIZED ULTRAMAFIC 82'-90' SPARSE ASBESTOS FIBRE < 5%, 1/32" - 1/2" 90'-195' NUMEROUS ASBESTOS FIBRE > 10% 1/32" TO 1/2", 195'-200' SPARSE FIBRE < 5% 200'-207' NO ASBESTOS FIBRE				
207' - 290'	MEDIUM GRAINED, HIGHLY CHLORITIC VOLCANIC (ANDESITE), CHLORITE IN SMALL SHEARS DARK SILICEOUS SECTIONS, SHEAR ZONE 220' - 225'				
290' - 378'	FINE GRAINED, DARK SILICEOUS VOLCANIC (PHYSDACITE), CHLORITIC INCLUSIONS CHLORITE IN SHEARS, THIN FRACTURES WITH QUARTZ-CARBONATE				
378' - 428'	MEDIUM GRAINED, PALE GREEN HIGHLY CHLORITIC VOLCANIC (ANDESITE) LIGHT AND DARK BANDS, SMALL CHLORITIC SHEARS THIN QUARTZ-CARBONATE STRINGS GRAPHITIC SHEAR ZONE 422' - 428'				
428' - 509'	FINE GRAINED, DARK, SILICEOUS VOLCANIC (PHYSDACITE), NUMEROUS SMALL SHEARS SOME WITH CHLORITE, THIN FRACTURES WITH QUARTZ-CARBONATE ONE QUARTZ VEIN (BARREN), GRAPHITIC SHEAR ZONE (466' - 475')				
509'	END OF HOLE				



PROPERTY UNITED ASSOCIATED CO. MC ARTHUR TWP.

HOLE NUMBER 2

# DIAMOND DRILL RECORD

SHEET NUMBER 1

SECTION FROM 0 TO 352'

LOCATION: LAT. 100' NORTH  
 DEP. LINE 3400 WEST  
 ELEVATION OF COLLAR - 50'  
 DATUM \_\_\_\_\_  
 DIRECTION AT START: BEARING SOUTH 30° WEST  
 DIP - 45°

STARTED OCTOBER 4/74  
 COMPLETED OCTOBER 7/74  
 ULTIMATE DEPTH 252'  
 PROPOSED DEPTH 250'

DEPTH FEET	FORMATION	SAMPLE NO.	WIDTH OF SAMPLE	GOLD \$	SLUDGE GOLD \$
0 - 70'	OVER BEDDON				
70' - 171'	SERPENTINIZED ULTRAMAFIC; 70' - 141' NUMEROUS THIN ASPHESTOS STRINGERS CROSS FIBRES $\frac{1}{32}$ " - $\frac{1}{8}$ " ; > 10% ; 141' - 150' SPARSE ASPHESTOS STRINGERS < 5% ; 150' - 171' ODD QUARTZ CARB. STRINGER, DISS. TYPE, NO ASPESTO				
171' - 228'	MEDIUM GRAINED, HIGHLY CHLORITIC VOLCANIC (ANDSITE), SLUGS WITH CHLORITE, INCREASING GRAIN SIZE DOWN SECTION				
228' - 240'	FINE GRAINED, DARK, SILICEOUS VOLCANIC (PHYDROCLITE) SLUGS WITH CHLORITE, PRECIPITATED RECENT SECTION, ODD QUARTZ CARBONATE STRINGER				
240' - 252'	SLIGHT FOLIATION, MORE QUARTZ CARBONATE STRINGERS				
252'	END OF HOLE				

NORTHERN MINER PRESS LIMITED, TORONTO - STOCK FORM NO 301 REV. 9/44

DRILLED BY MODERNE - VAL D'OR, QUEBEC

PROFESSIONAL ENGINEER  
 REGISTERED  
 J. R. BOISSONEAULT  
 SIGNED J. R. Boissoneault  
 PROVINCE OF QUEBEC

PROPERTY ARTURI ASBESTOS Co 17c ARTHUR TWP.

HOLE NUMBER 3

SHEET NUMBER 1

SECTION FROM 0 TO 170

# DIAMOND DRILL RECORD

LOCATION: LAT 225° NORTH

DEP. LINE 3400 WEST

ELEVATION OF COLLAR -30'

DATUM \_\_\_\_\_

DIRECTION AT START: BEARING SOUTH 30° WEST

DIP -50°

STARTED OCTOBER 8/74

COMPLETED ABANDONED OCTOBER 17/74

ULTIMATE DEPTH 170'

PROPOSED DEPTH 400'

DEPTH FEET	FORMATION	SAMPLE NO.	WIDTH OF SAMPLE	GOLD \$	SLUDGE GOLD \$
0'-170'	OVERBURDEN (DID NOT REACH BEDROCK)				

NORTHERN MINER PRESS LIMITED, TORONTO-STOCK FORM NO. 301 REV. 9/44

DRILLED BY ROSEANE - V4L 3012 QUEBEC

SIGNED J.R. Boissoneault



PROPERTY ACITBI ASBESTOS McARTHUR TWP.

HOLE NUMBER 4

SHEET NUMBER 1

# DIAMOND DRILL RECORD

SECTION FROM 0 TO 300'

LOCATION: LAT 215' NORTH  
 DEP. LINE 500 WEST  
 ELEVATION OF COLLAR -30'  
 DATUM \_\_\_\_\_  
 DIRECTION AT START: BEARING SOUTH 30° WEST  
 DIP -45°

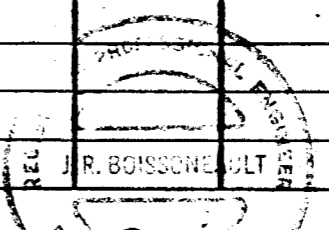
STARTED OCTOBER 22/74  
 COMPLETED OCTOBER 27/74  
 ULTIMATE DEPTH 300'  
 PROPOSED DEPTH 300'

DEPTH FEET	FORMATION	SAMPLE NO.	WIDTH OF SAMPLE	GOLD \$	SLUDGE GOLD \$
0'-105'	OVERBURDEN				
105'-168'	SERPENTINIZED ULTRAMAFIC 105'-120' - SHEAR, 110-120 SPARSE ASBESTOS STRINGERS SHORT FIBRE 1/32", 120'-160' NUMEROUS ASBESTOS STRINGERS 1/32" - 1/8" > 10% PARALLEL, 160'-168' SPARSE ASBESTOS STRINGERS < 5% QUARTZ-CARBONATE STRINGERS				
168'-180'	MEDIUM GRAINED, HIGHLY CHLORITIC VOLCANIC (ANDESITE) AND FRACTURE WITH QUARTZ-CARBONATE				
180'-235'	HIGHLY CHLORITIC, SHEARED, CHLORITE IN SHEARS, FAULT-192				
235'-293'	FINE GRAINED, DARK, SILICEOUS, (RHYODACITE) VOLCANIC, SLIGHTLY CHLORITIC CHLORITE IN SHEARS				
293'-300'	SHEARED, SLIGHTLY FOLIATED, FRACTURE ZONE WITH GRAPHITE IN SHEARS QUARTZ-CARBONATE STRINGERS.				
300'	END OF HOLE				

NORTHERN MINER PRESS LIMITED, TORONTO-STOCK FORM NO. 501 REV. 9/48

DRILLED BY M. BOISSONNEULT - VILLE D'OR, QUEBEC

SIGNED J. R. BOISSONNEULT



PROPERTY ARITIRI ASBESTOS CO McARTHUR TWP.

HOLE NUMBER 5

SHEET NUMBER 1

**DIAMOND DRILL RECORD**

SECTION FROM 0 TO 303

LOCATION: LAT. 30' SOUTH  
 DEP. 1.00 EAST

STARTED OCTOBER 28/14

ELEVATION OF COLLAR -30'

COMPLETED NOVEMBER 4/14

DATUM \_\_\_\_\_

ULTIMATE DEPTH 303'

DIRECTION AT START: BEARING SOUTH 45° WEST  
 DIP -45°

PROPOSED DEPTH 300'

DEPTH FEET	FORMATION	SAMPLE NO.	WIDTH OF SAMPLE	GOLD \$	SLUDGE GOLD \$
0-94'	OVERBURDEN				
94'-215'	SERPENTINIZED ULTRAMAFIC; 94'-100' SPARSE ASBESTOS STRINGERS, FRACTURES WITH CHLORITE; 100-186 NUMEROUS PARALLEL ASBESTOS STRINGERS 1/2"-1/32"				
<del>186'</del> -	186'-215', FRACTURES WITH CHLORITE SPARSE ASBESTOS STRINGERS, FRACTURES WITH QUARTZ-CARBONATE				
215-265	MEDIUM GRAINED, CHLORITE VA. GRAN. (ANDESITE), DARK SILICEOUS SECTIONS WITH CHLORITE IN SLIPS (45°), QUARTZ-CARBONATE STRINGERS				
265-303	FINE GRAINED, DARK, SILICEOUS VA. GRAN. (RHODACITE) SHEARS WITH CHLORITE AND GRAPHITE (20°-15°)				
303	END OF HOLE				

J.R. BOISSONNEULT  
 ENGINEER

NORTHERN MINER PRESS LIMITED, TORONTO-STOCK FORM NO 501 REV. 9.48

SIGNED *[Signature]*

PROPERTY ARITIRI ASBESTOS CO. McARTHUR TWP

HOLE NUMBER 6

SHEET NUMBER 1

# DIAMOND DRILL RECORD

SECTION FROM 0 TO 33

LOCATION: LAT. 40' SOUTH  
 DEP. 2400 EAST  
 ELEVATION OF COLLAR -30'  
 DATUM  
 DIRECTION AT START: BEARING SOUTH 45° WEST  
 DIP -75°

STARTED NOVEMBER 5  
 COMPLETED NOVEMBER 9  
 ULTIMATE DEPTH 303'  
 PROPOSED DEPTH 300'

DEPTH FEET	FORMATION	SAMPLE NO.	WIDTH OF SAMPLE	GOLD \$	SLUDGE GOLD \$
0'-158'	OVERBURDEN				
158'-212'	SERPENTINIZED ULTRAMAFIC; 158'-203', ASBESTUS STRINGERS (25%) FIBRES 1/32" - 1/16", 203'-212' BAFREN				
212'-287'	MEDIUM GRAINED, CHLORITIC VOLCANIC (ANDESITE), NUMEROUS SLIPS AND FRACTURES WITH CHLORITE, SOME GRAPHITE, MANY QUARTZ-CARBONATE STRINGERS INCREASING CHLORITE DOWN SECTION, 231-237 AND 274-287 SHEARED CONTORTED CRUSHED AREAS, HIGHLY CHLORITIC				
287'-303'	FINE GRAINED, SILICEOUS, DARK, VOLCANIC (PHYSDAGITE), FRACTURES WITH CHLORITE, QUARTZ-CARBONATE STRINGERS.				
303'	END OF HOLE				



DRILLER [Signature] SUPERVISOR [Signature]

DATE NOVEMBER 9 1967



PROPERTY AGITBI ASBESTOS CO. McARTHUR TWP.

HOLE NUMBER 1

SHEET NUMBER 1

SECTION FROM 0' TO 303'

# DIAMOND DRILL RECORD

LOCATION: LAT. 180' NORTH  
DEP. LINE 1299 WEST  
ELEVATION OF COLLAR -30'  
DATUM \_\_\_\_\_  
DIRECTION AT START: BEARING SOUTH 30° WEST  
DIP -55°

STARTED NOVEMBER 10  
COMPLETED NOVEMBER 14  
ULTIMATE DEPTH 215'  
PROPOSED DEPTH 400'

DEPTH FEET	FORMATION	SAMPLE NO.	WIDTH OF SAMPLE	GOLD \$	SLUDGE GOLD \$		
0'-215'	OVERBURDEN						
215'	HOLE LOST IN OVERBURDEN NEAR RED ROCK SURFACE —			ABANDONED			

NORTHERN MINER PRESS LIMITED, TORONTO—STOCK FORM No 501 REV. 9/44

DRILLED BY MODERNE - VAL D'OR, QUEBEC

SIGNED [Signature]

# ABITIBI ASBESTOS CO.

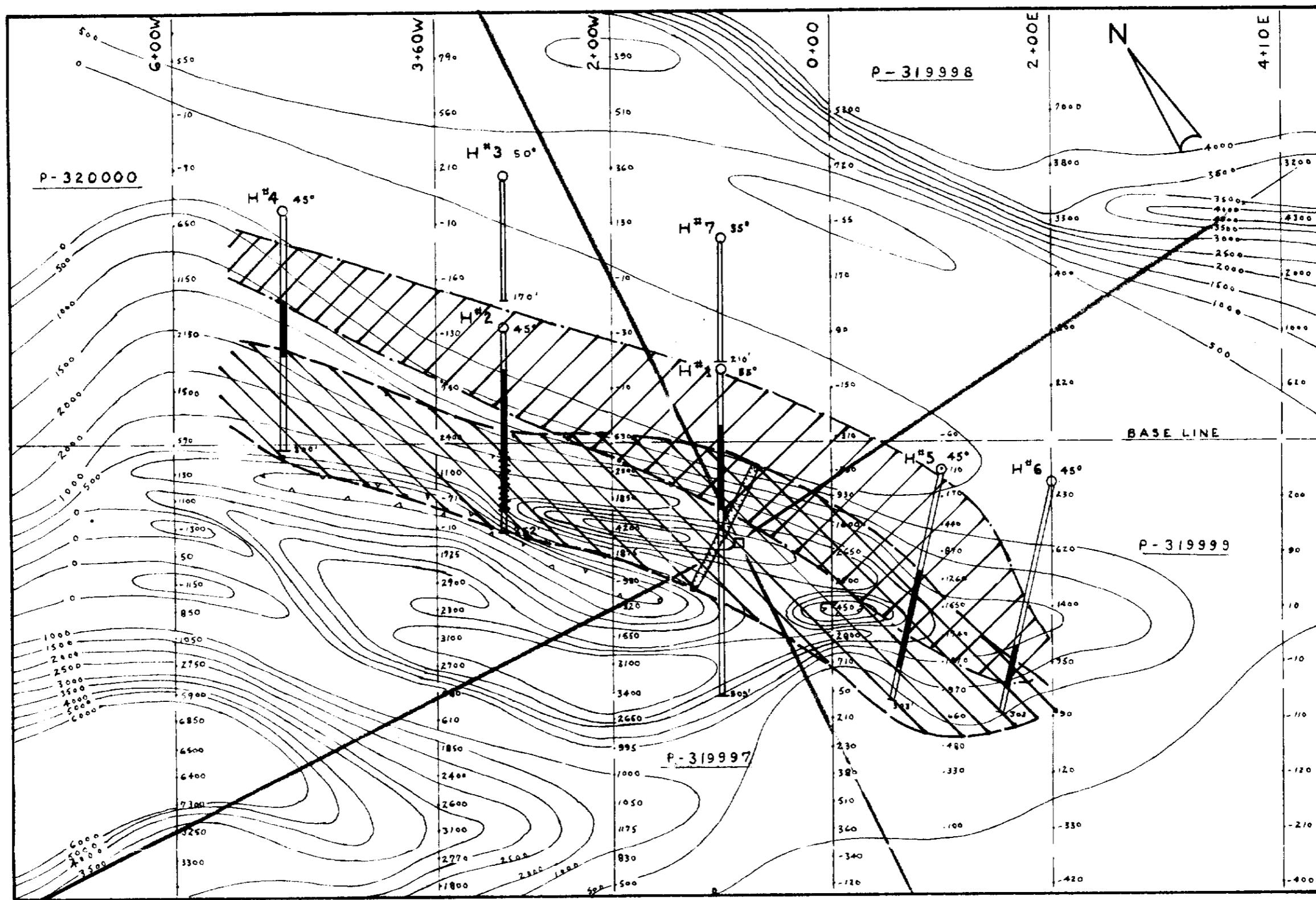
McARTHUR TOWNSHIP

PORCUPINE MINING DIVISION

## DIAMOND DRILLING PROGRAM

SCALE: 1 IN = 100'

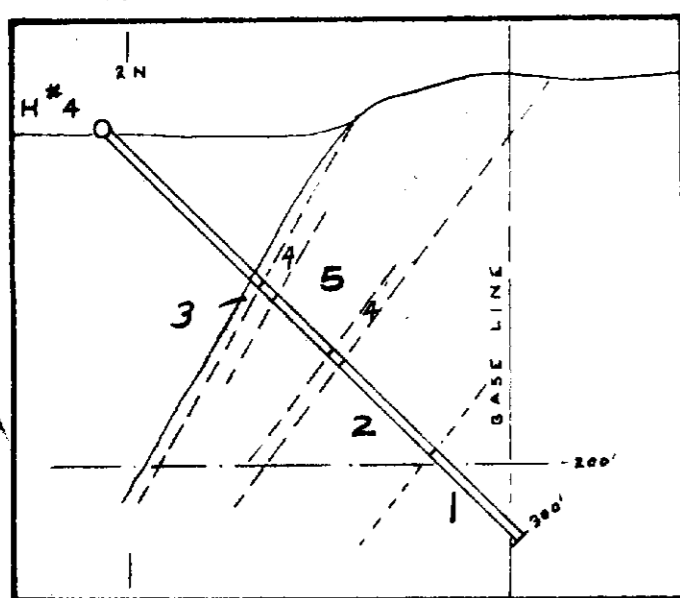
### PLAN



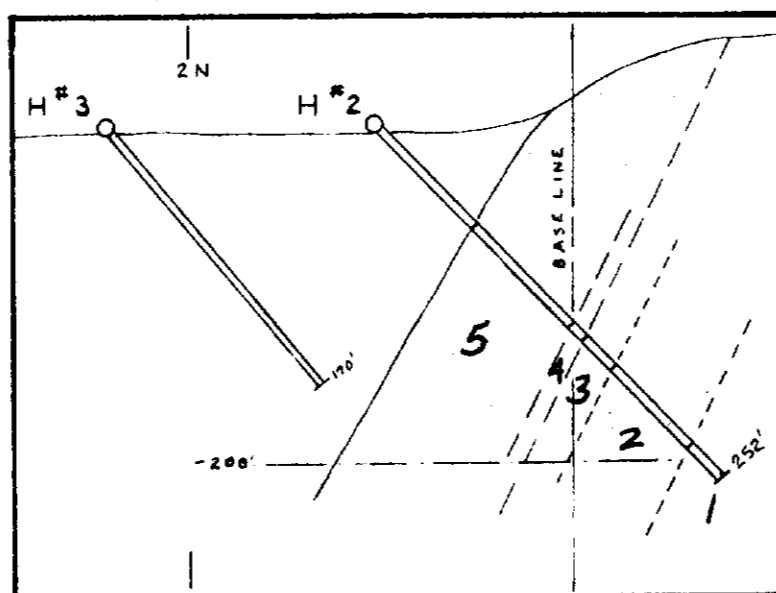
LEGEND: PICKET LINE ———, MAGNETIC CONTOUR ———, MAGNETIC READING | 330, DIAMOND DRILL HOLE ○  
 ASBESTOS BEARING INTERSECTION ———, OUTLINE OF DEPOSIT AT SURFACE ———, OUTLINE OF DEPOSIT AT -200' ———

### DRILL HOLE SECTIONS

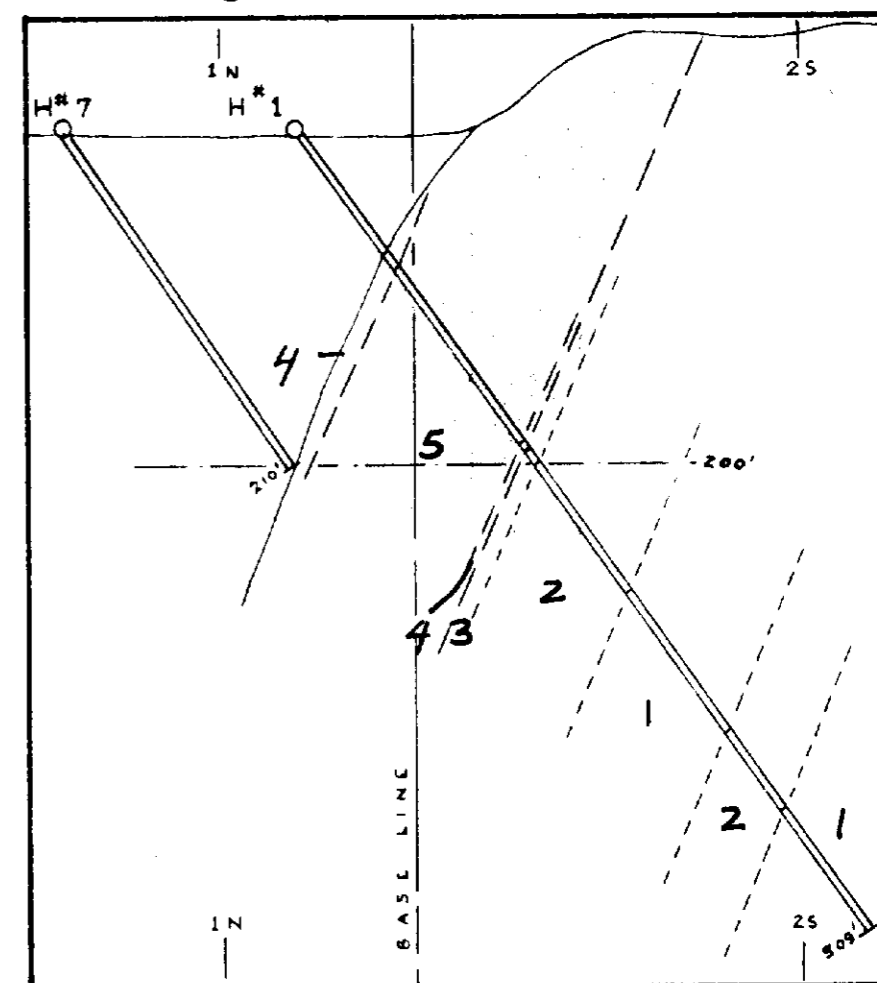
SECTION 5+00 W



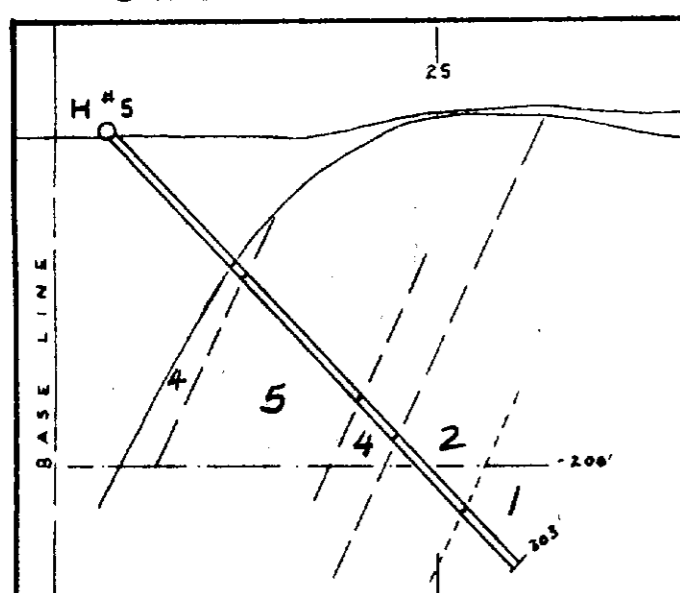
SECTION 3+00 W



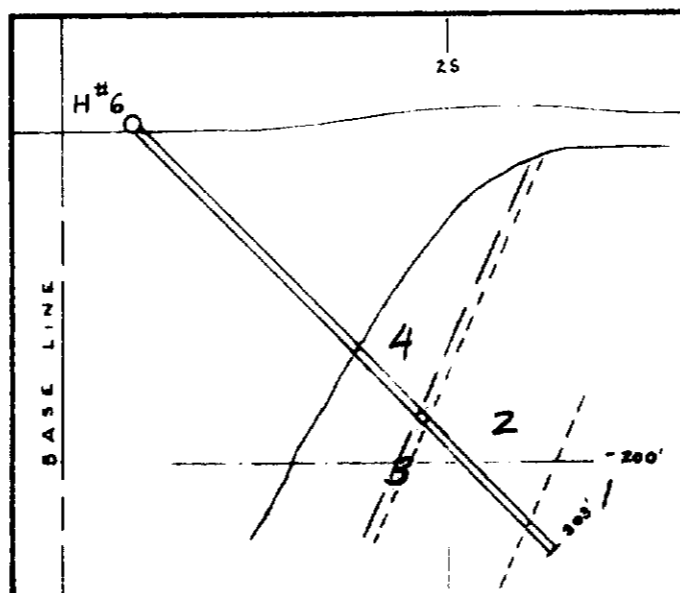
SECTION 1+00 W



SECTION 1+00 E



SECTION 2+00 E



#### LEGEND

- DIAMOND DRILL HOLE. ○ END AND DEPTH ———
- BEDROCK SURFACE ———
- ASBESTOS MINERALIZATION > 10% IN ULTRAMAFIC ——— 5
- ASBESTOS MINERALIZATION < 10% IN ULTRAMAFIC ——— 4
- ULTRAMAFIC INTRUSIVE (BARREN) ——— 3
- MAFIC-INT VOLCANIC ——— 2
- FELSIC VOLCANIC ——— 1

### SECTIONS FACING EAST



42A03NE0500 17 McARTHUR

200

BY JOHN R. GOISSNEHAULT, NOV., 1974

