

DIAMOND DRILLING



010

TOWNSHIP: McArthur

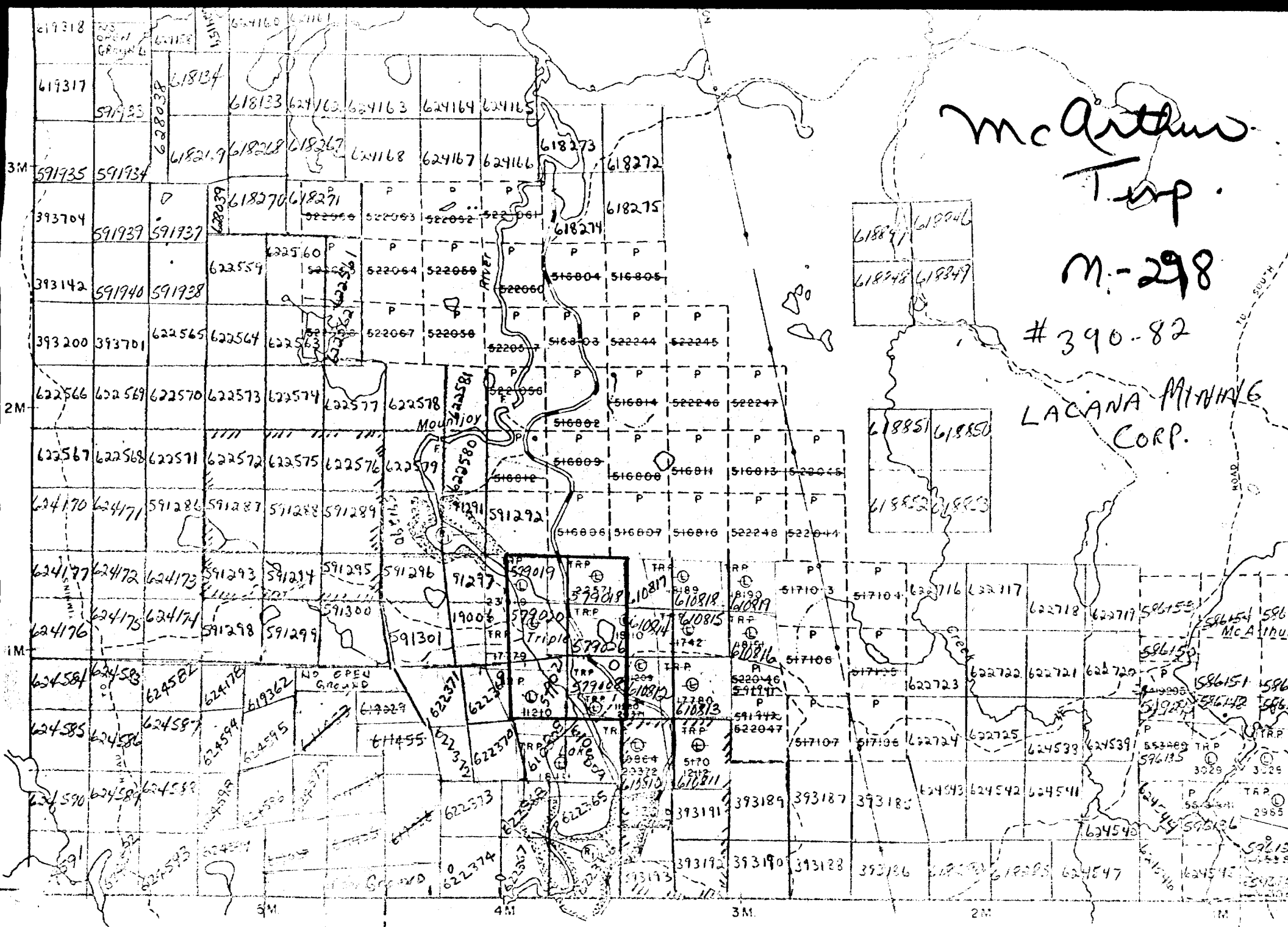
REPORT No.: 18

WORK PERFORMED BY: Lacana Mining Corp.

<u>CLAIM No.</u>	<u>HOLE No.</u>	<u>FOOTAGE</u>	<u>DATE</u>	<u>NOTE</u>
P 579020	MC-2-82	217.0	Mar/82	(1)
P 579026	MC-1-82	305.0	Mar/82	(1)

2 DDH 522.0'

NOTES: (1) #390-82



McArthur  
Trp.

M-298

#390-82

LACANA MINING  
CORP.

# DIAMOND DRILL RECORD

Located claim 579020

PROPERTY Triple Lakes, McArthur Twp., Timmins

HOLE NO. Mc-2-82

SHEET NUMBER 1  
 LATITUDE 49° 58' 30" N  
 DEPARTURE 16.50 W  
 ELEVATION Lake Level

SECTION FROM 0.0 TO \_\_\_\_\_  
 DATUM \_\_\_\_\_  
 BEARING 280° Az  
 DIP 55° At collar  
50° At 200 ft (corrected)

STARTED 10/3/52  
 COMPLETED 12/2/52  
 ULTIMATE DEPTH 217 ft  
 PROPOSED DEPTH 300 ft.

DEPTH FEET	FORMATION	SAMPLE NO.	WIDTH OF SAMPLE	GOLD \$	SLUDGE GOLD \$
0.0-35.0	Casing. 28 feet of water, 5 feet of overburden.				
35.0-109.0	DIORITE/GABBRO Mottled dark green grey. Medium to coarse grained equigranular, massive for most part. Medium hard.				
	35.0-58.0 Medium grained, fine grained locally (andesitic). Fine quartz and carbonate stringers common. 2-3% disseminated pyrite, some pyrrhotite. Local blebs and clots of massive pyrite.				
	58.0-108.0 Coarse diorite-gabbro. Massive, local quartz and quartz-carbonate veining. Disseminated and bleby pyrite.				
	57.5 Felsic dike 40° CA., 10% pyrite.				
	63.0 1/4" quartz veins 30° CA., heavy pyrite mineralization.				
	65.0-66.6 Pink quartz-carbonate, k-spar veins with much pyrite.				
	108.0-109.0 Chilled - fine grained margin.				
109.0-178.0	ALTERED ANDESITE Light grey to mottled grey and white, silicified andesite. Medium hard. Much quartz veining and pervasive silicification. Strongly pyritic in some sections. Pyrite, chalcopryrite and pyrrhotite locally. Carbonated to varying degrees.				
	109.0 1/2" quartz - k-spar dike 45° CA.				
	118.0-128.0 Strongly silicified, pyrite, minor pyrrhotite.				
	128.0-133.0 Silicified with quartz veins at 128.0-129.0 and 129.5 to 131.5, much pyrite, chalcopryrite and pyrrhotite.				

N.M.P. TORONTO-5100K FORM NO. 501 REV. 12/51

DRILLED BY W. J. ...

LACANA MINING CORPORATION  
 SIGNED R. C. ...



# DIAMOND DRILL RECORD

Location claim 979026

PROPERTY Triple Lakes, McArthur Twp., Timmins

HOLE NO. Mc-1-82

SHEET NUMBER 1 SECTION FROM 0.0 TO 161.0 STARTED 10/3/82  
 LATITUDE C 45° 00' N 75° 00' W DATUM \_\_\_\_\_ COMPLETED 17/3/82  
 DEPARTURE 12:50 AM BEARING Az 320° ULTIMATE DEPTH 305.0 ft  
 ELEVATION 40 ft above lake DIP 50° at collar PROPOSED DEPTH 300.0 ft  
50° at 300 ft (corrected)

DEPTH FEET	FORMATION	SAMPLE NO.	WIDTH OF SAMPLE	GOLD g	SLUDGE GOLD g
0.0-32.0	Casing, bedrock at 31.0'				
31.0-161.0	LAPILLI TUFF AND TUFF				
	Light to medium grey, locally pinkish grey. Medium hard to hard. The fragments and matrix are fine grained, the former are lighter coloured and more felsic in composition. Some of the fragments are greater than 5 cm. in length and many are aligned sub-parallel to CA. The matrix is fine grained, fairly dark. Sparse sulfides with few veins. Fracturing sub-parallel to CA. is common.				
	31.0-53.0 Much broken core, 85% recovery.				
	53.0 Quartz stringers 30° CA.				
	68.0-82.0 Numerous fractures sub-parallel to CA., chloritic fracture planes, some oxidation.				
	95.0-135.0 Strong fracturing at varying angles - most prominent are sub-parallel, 30°, 60° CA. Most intense fracturing at 110.0 - 120.0.				
	109.0 1" quartz vein 35° CA.				
	149.0-150.0 Quartz veins 1/2" wide, 45° CA, with pyrite and pyrrhotite along vein margins.				
	153.0-157.0 Much broken core.				
161.0-266.0	ANDESITE				
	Medium grey to green grey, fine to medium grained, predominantly equigranular. Locally fine porphyritic. Epidotized, fractured carbonate stringers common. (Probably fine grained phase to diorite intrusion).				

# DIAMOND DRILL RECORD

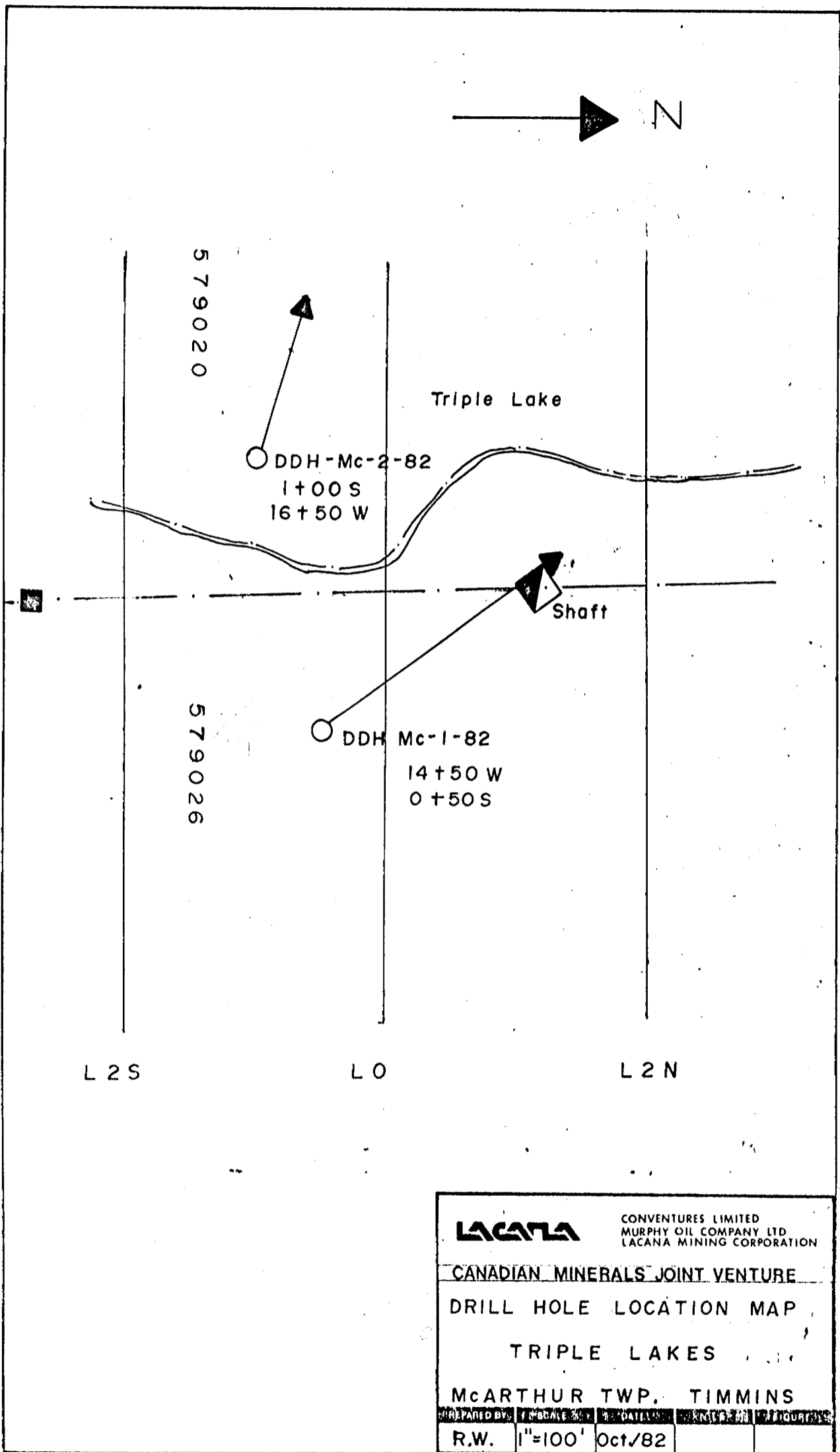
PROPERTY Triple Lakes, McArthur Twp., Timmins HOLE NO. Mc-1-82

SHEET NUMBER 2 SECTION FROM 171.5 TO 305.0 STARTED \_\_\_\_\_  
 LATITUDE \_\_\_\_\_ DATUM \_\_\_\_\_ COMPLETED \_\_\_\_\_  
 DEPARTURE \_\_\_\_\_ BEARING \_\_\_\_\_ ULTIMATE DEPTH \_\_\_\_\_  
 ELEVATION \_\_\_\_\_ DIP \_\_\_\_\_ PROPOSED DEPTH \_\_\_\_\_

DEPTH FEET	FORMATION	SAMPLE NO.	WIDTH OF SAMPLE	GOLD \$	SLUDGE GOLD \$
	171.5 3" broken quartz vein 45° CA. Some fine pyrite. Strong chloritic alteration some hematite along fractures.				
	188.0-191.0 Zone of quartz stringers with one 3" vein at 188.7. Disseminated and stringer pyrite with some chalcopyrite and pyrrhotite. 1 - 5% disseminated sulfides. Widespread weak to moderate carbonate alteration.				
	203.0-214.0 Quartz and carbonate veins and stringers, some at 50° CA., others sub-parallel to CA. Bleby pyrite and chalcopyrite common, minor pyrrhotite.				
	221.0-222.0 Quartz stringers 45° CA.				
	240.0-245.0 Lighter coloured, medium grained.				
	258.2-258.5 Carbonate vein 50° CA.				
	TRANSITIONAL CONTACT				
266.0-305.0	DIORITE				
	Medium to dark green grey, fine to medium grained, equigranular. Massive, few veins.				
	293.0-294.0 Quartz and carbonate stringers 50° CA.				
305.0	END OF HOLE				

DRILLED BY \_\_\_\_\_

SIGNED \_\_\_\_\_



**LACANA**

CONVENTURES LIMITED  
MURPHY OIL COMPANY LTD  
LACANA MINING CORPORATION

CANADIAN MINERALS JOINT VENTURE

DRILL HOLE LOCATION MAP

TRIPLE LAKES

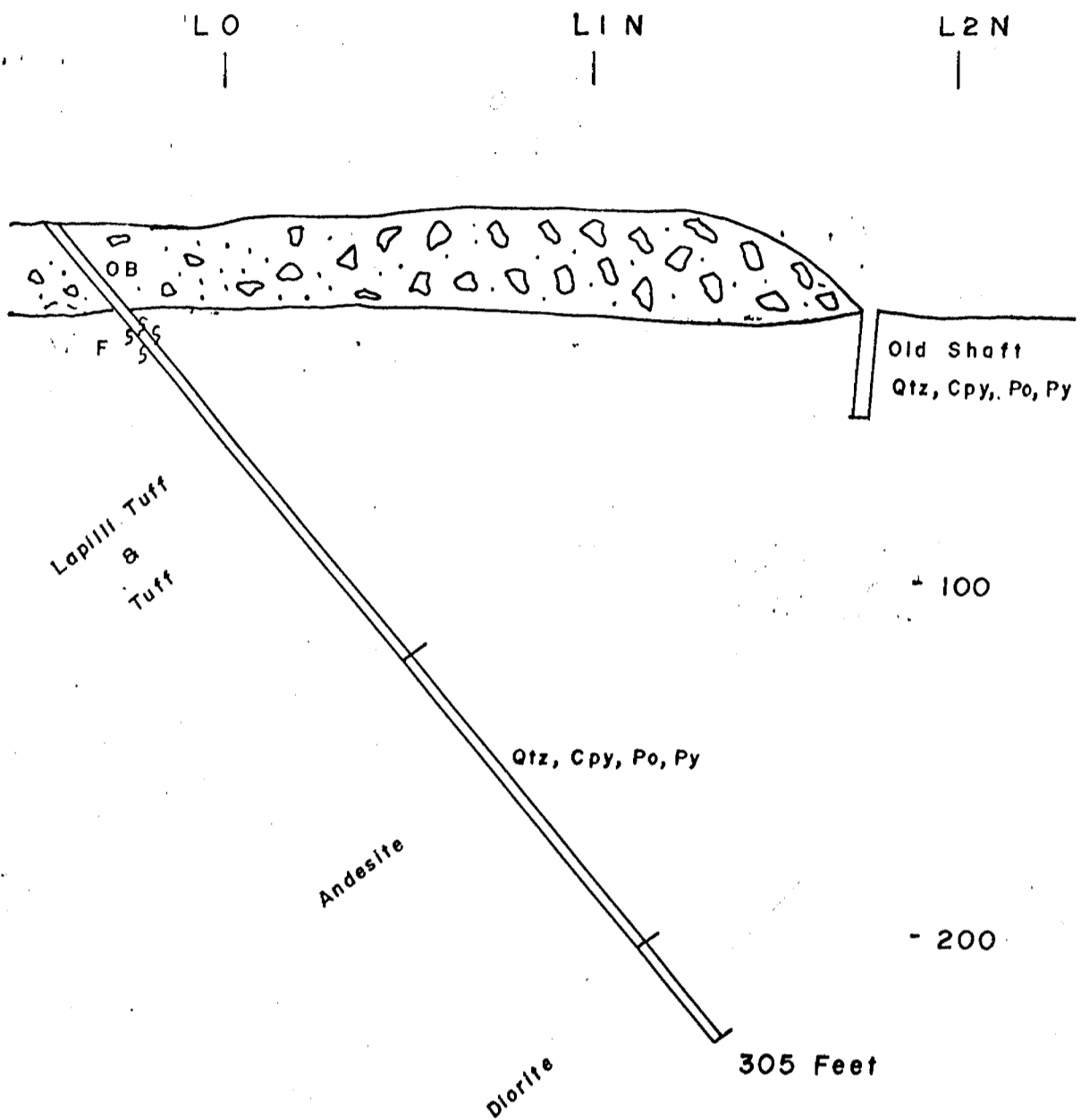
McARTHUR TWP. TIMMINS

PREPARED BY: J. MACAULAY DATE: OCT 1982

R.W. 1"=100' Oct/82

*R. Welby*  
18/10/82

→ Az 320°



Vertical & Horizontal Scale: 1" = 50 Feet

**LEGEND**

- Qtz. = Quartz
- Cpy. = Chalcopyrite
- Po. = Pyrrhotite
- Py. = Pyrite

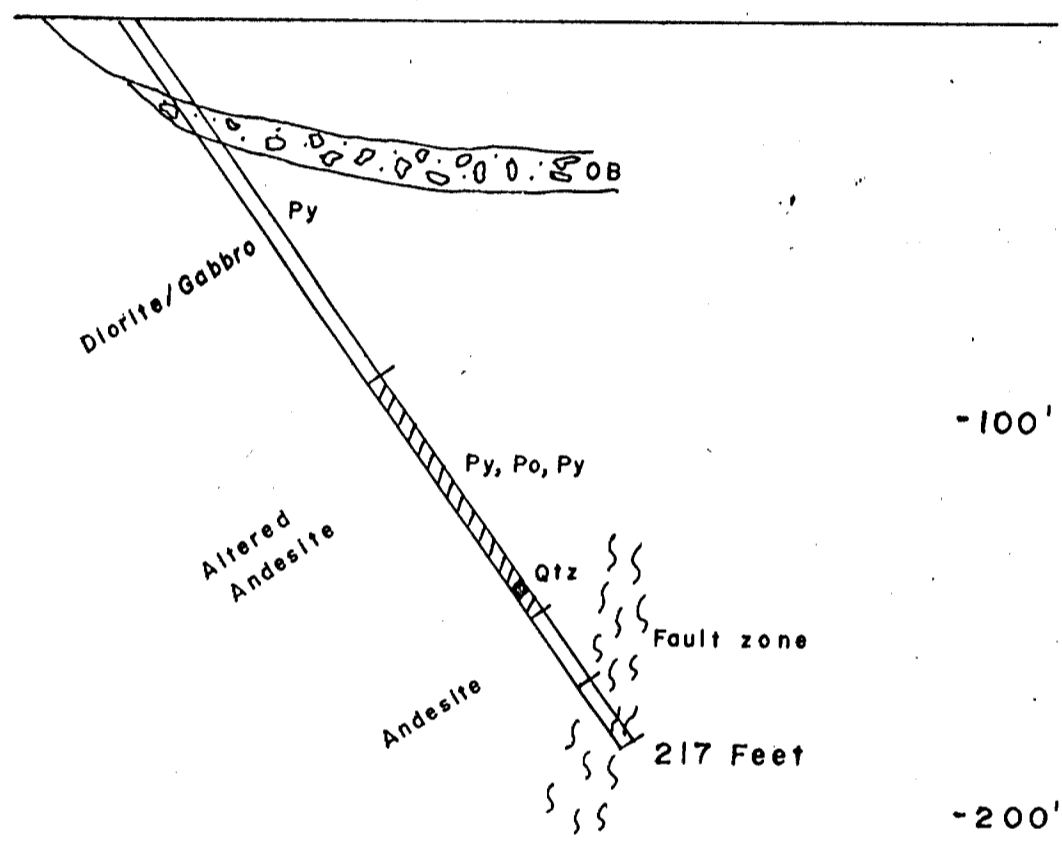
<b>LACANA</b>		CONVENTURES LIMITED MURPHY OIL COMPANY LTD. LACANA MINING CORPORATION	
CANADIAN MINERALS JOINT VENTURE			
DRILL PROFILE DDH Mc-1-82			
TRIPLE LAKES			
McARTHUR TWP, TIMMINS			
PREPARED BY	SCALE	DATE	FIGURE NO.
R.W.	1" = 50'	Oct./82	

*R. Wells*  
18/10/82



→ Az 280°

Triple Lake



Vertical & Horizontal Scale: 1" = 50 Feet

LEGEND

- Qtz. = Quartz
- Py. = Pyrite
- Po. = Pyrrhotite

<b>LACANA</b>		CONVENTURES LIMITED MURPHY OIL COMPANY LTD LACANA MINING CORPORATION	
CANADIAN MINERALS JOINT VENTURE			
DRILL PROFILE DDH Mc-2-82			
TRIPLE LAKES			
McARTHUR TWP. TIMMINS			
PREPARED BY	DATE	SCALE	FIGURE NO.
R.W.	1"=50'	Oct./82	

*R. C. Wells*  
12/10/82