



42A03SE0023 W9560-00546 HUTT

010

**ROYAL OAK MINES INC.  
SEMPLE-HUTT PROPERTY  
1995 ASSESSMENT REPORT  
DIAMOND DRILLING**

**Submitted by:**

**R.D. Maass  
Geologist  
Eastern Canada Exploration**

**December 1995**



42A03SE0023 W9560-00546 HUTT

010C

## CONTENTS

	<b>Page</b>
1.0 Introduction and Summary	1
2.0 Property Description, Location and Access	1
Figure 1 Location Map	2
Figure 2 Claim Map	3
Table 1 Claim List	4
3.0 Previous Work and Geology	5
4.0 1995 Diamond Drill Program	6
Table 2 Summary of Drill Footage by Claim Number	7
Figure 4 Drilling Plan Map - SEM95-1	8
Figure 5 Drilling Plan Map - SEM95-2A	9
Figure 6 Drilling Plan Map - SEM95-2B	10
Figure 7 Drilling Plan Map - SEM95-2C	11
Figure 8 Drilling Plan Map - SEM95-3	12
5.0 Assay Results	13
6.0 Conclusions and Recommendations	13
List of References	14
Statement of Qualifications	15

## APPENDICES

- Appendix 1 Legend, Drill Logs, Assay Certificates
- Appendix 2 Drill Hole Sections

## **1.0 Introduction and Summary**

During November 1995, Royal Oak Mines Inc. completed a 5-hole diamond drill program on the Semple-Hutt property, located about 62 km south of Timmins, Ontario. Two drill holes were abandoned in overburden and three holes successfully cored bedrock.

The work was designed to determine the cause of I.P. anomalies located on the property in December 1994. The I.P. anomalies were explained by the presence of disseminated to semi-massive pyrite/pyrrhotite mineralization in a series of graphitic argillite sediments and intermediate volcanic breccia with a graphitic matrix.

## **2.0 Property Description, Location and Access**

The Semple-Hutt property consists of 42 claim units (672 ha) located about 62 km south of Timmins, Ontario (Figure 1). The claims are within Semple and Hutt townships, and are listed in Table 1 and shown in Figure 2. The property is owned by Royal Oak Mines Inc.

Road access to the property is provided by the Langmuir Road, originating in South Porcupine, to where it crosses the Wicks Road (Hwy 566), which provides access to the northern portion of the property.

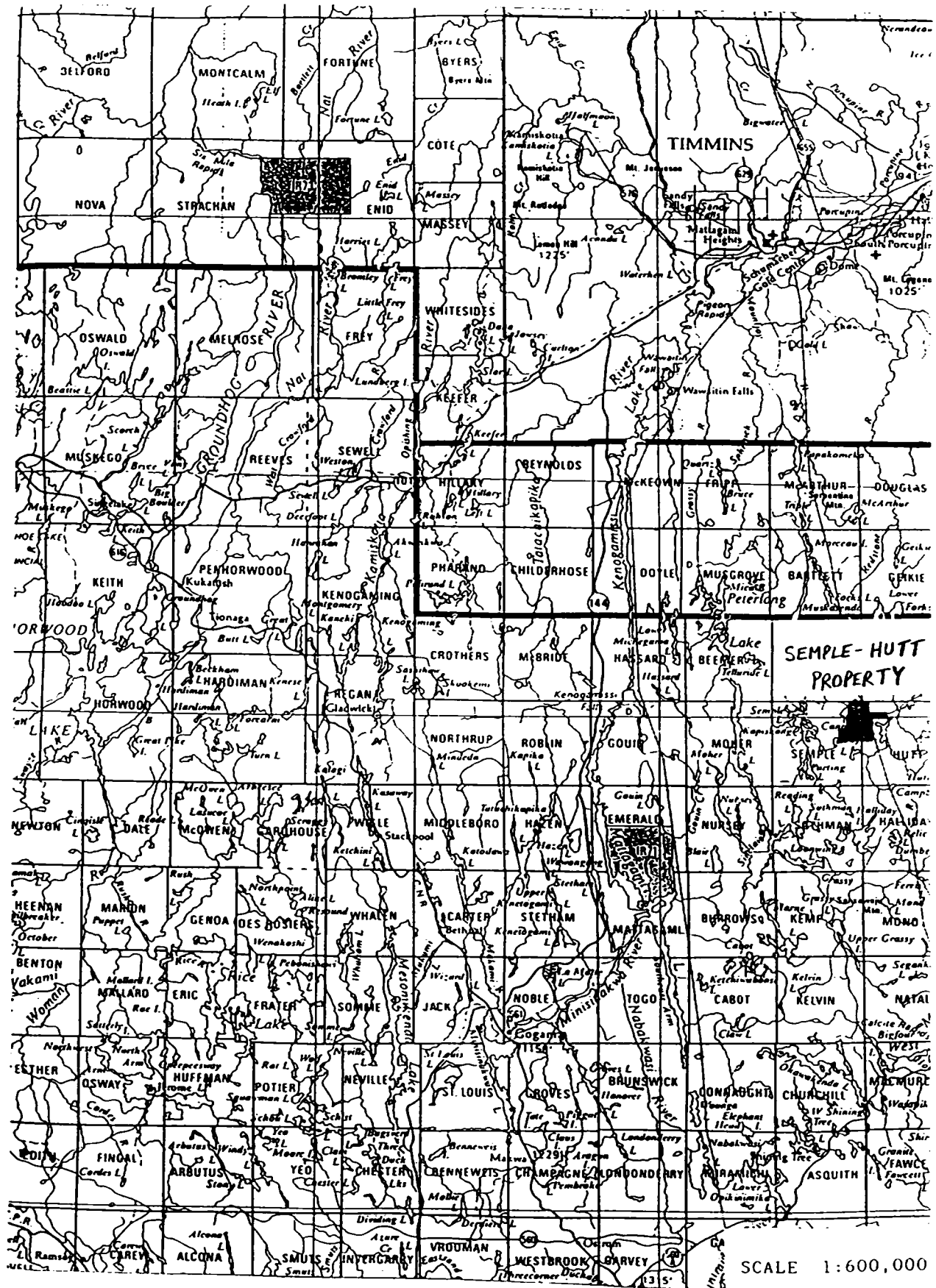


FIGURE 1: Location Map

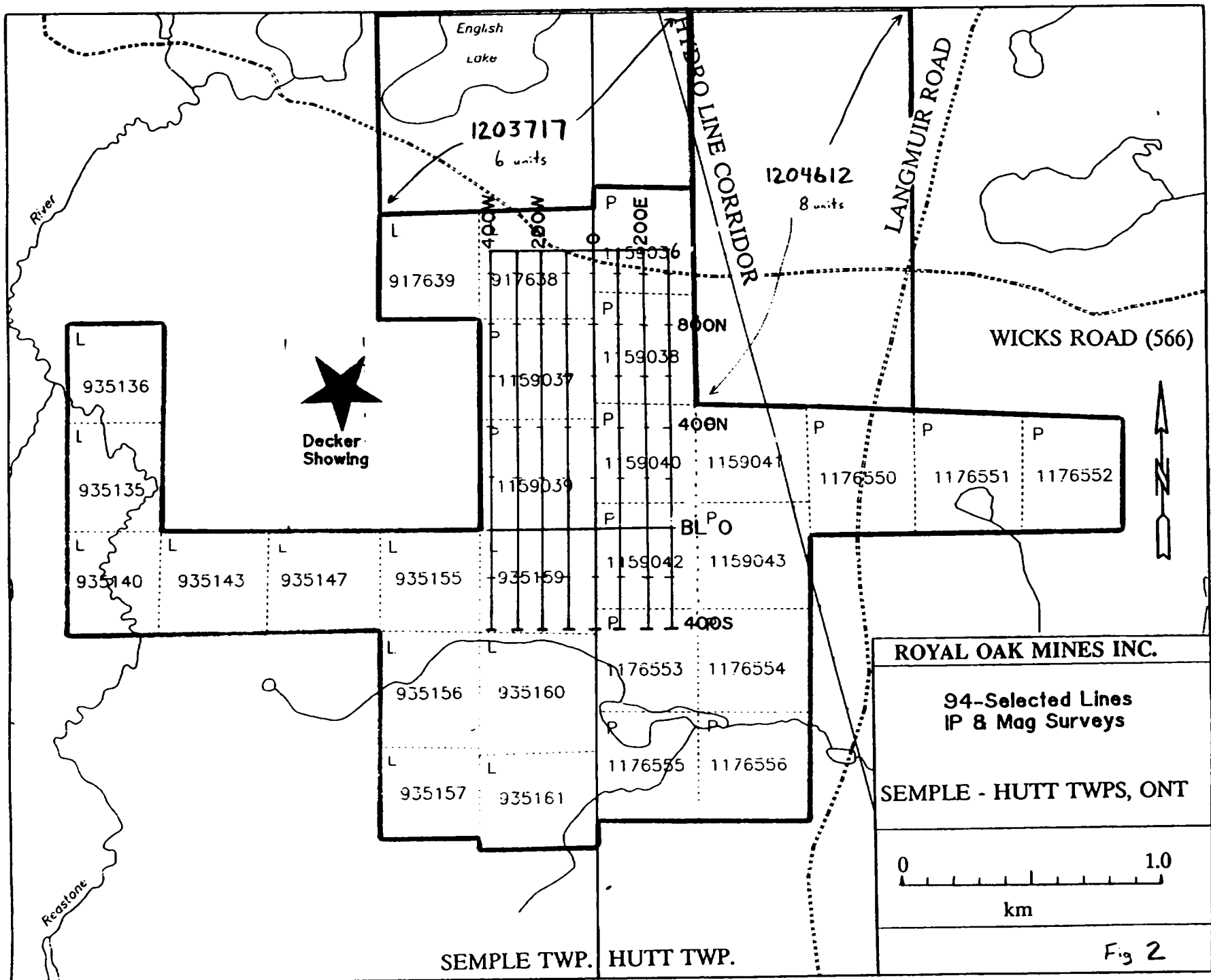


Fig 2

Table 1

**CLAIM LIST  
SEMPLÉ-HUTT PROPERTY**

<b>Claim Number</b>	<b>Number of Units</b>	<b>Township</b>
935135	1	Semple
935136	1	Semple
935140	1	Semple
935143	1	Semple
935147	1	Semple
935155	1	Semple
935156	1	Semple
935157	1	Semple
935159	1	Semple
935160	1	Semple
935161	1	Semple
917638	1	Semple
917639	1	Semple
1159037	1	Semple
1159039	1	Semple
1159036	1	Hutt
1159038	1	Hutt
1159040	1	Hutt
1159041	1	Hutt
1159042	1	Hutt
1159043	1	Hutt
1176550	1	Hutt
1176551	1	Hutt
1176552	1	Hutt
1176553	1	Hutt
1176554	1	Hutt
1175555	1	Hutt
1175556	1	Hutt
1203717	6	Semple/Hutt
1204612	8	Hutt
<b>Total</b>	<b>42 units (672 ha)</b>	

### **3.0 Previous Work and Geology**

Work in the area of the property dates back to 1958, when Jonsmith Mines Ltd. exposed what is now called the Decker Showing, a series of gold-bearing quartz veins within deformed mafic volcanics. The showing is about 500m west of the area covered by this report (Figure 2).

In 1962, geophysical and geological surveys and 5,095 feet of drilling was completed by Hollinger, covering the Semple-Hutt property, with work focussing on a pyritic graphite horizon near the small lake in the southern part of the property. Work between 1972 and 1979 consisted mainly of geophysical surveys, and three holes were drilled by Essex Minerals in the area covered by and surrounding the current property.

The Decker Showing was re-worked in 1986-1988 by Pamorex Minerals, who completed an I.P. survey, mapping, sampling, as well as drilling seven holes totalling 2,442 feet. Assay results from drilling were disappointing, as they were not as extensive as those from surface sampling.

A geological mapping program was conducted on the property in 1992 by Royal Oak Mines Inc. Between December 5 and 20, 1994, M.C. Exploration Services completed 12.0 km of I.P. and magnetometer survey work for Royal Oak Mines Inc.

In 1991, Falconbridge Ltd. completed a 345 m drill hole to test an HLEM conductor located approximately ½ mile southeast of the property. The drill hole encountered felsic tuffs, graphitic argillite and mafic-ultramafic intrusives.

BHP Minerals completed a work program consisting of geophysical surveys (Mag, VLF, HLEM, TEM) in 1990, followed by geological mapping, and soil and humus sampling in 1991. In 1992, a four hole, 843.2 m diamond drill program was completed northeast of the Royal Oak property. The drilling intersected a series of mafic to felsic volcanoclastics, graphitic sediments and felsic intrusives.

The property was covered by the Ontario Department of Mines in Map 2291 (1968). The map indicates the bedrock of the property to consist of a series of mafic, intermediate and felsic volcanics which have been folded into an east-plunging syncline, which has been subsequently cross-folded.

#### **4.0 1995 Diamond Drill Program**

Between November 10 and 23, 1995, Mackenzie Drilling Ltd. was contracted to complete a 3-hole diamond drill program on the Semple-Hutt property. The main objective of the drill program was to determine the cause of I.P. anomalies located on the property.

SEM95-1 was drilled to explain the cause of an I.P. anomaly located at L0+00, 5+75N with Low Conductivity, Low Metal Factor, High I.P. Effect. The drill hole intersected a series of graphitic argillite sediments and brecciated intermediate volcanics with a graphitic matrix. The anomaly can be explained by sulphide mineralization consisting of pyrrhotite fragments with minor pyrite and chalcopyrite, in graphitic fractures in intermediate volcanics.

SEM95-2 was designed to determine the cause of an I.P. anomaly located at L2+00E, 7+00N with Low Conductivity, High Metal Factor and High I.P. Effect.

SEM95-2A was drilled at L2+00E, 6+25N, and was abandoned in overburden at 112 feet. The casing broke 10 feet from surface and attempts to retrieve the casing and rods were unsuccessful.

SEM95-2B was drilled at L2+00E, 6+35N, and was abandoned in overburden at 112 feet. This time the casing broke 20 feet from surface. An attempt was made to drill NW casing over the BW casing, however the BW casing was broken at 40 feet and further drilling at this location was not possible.

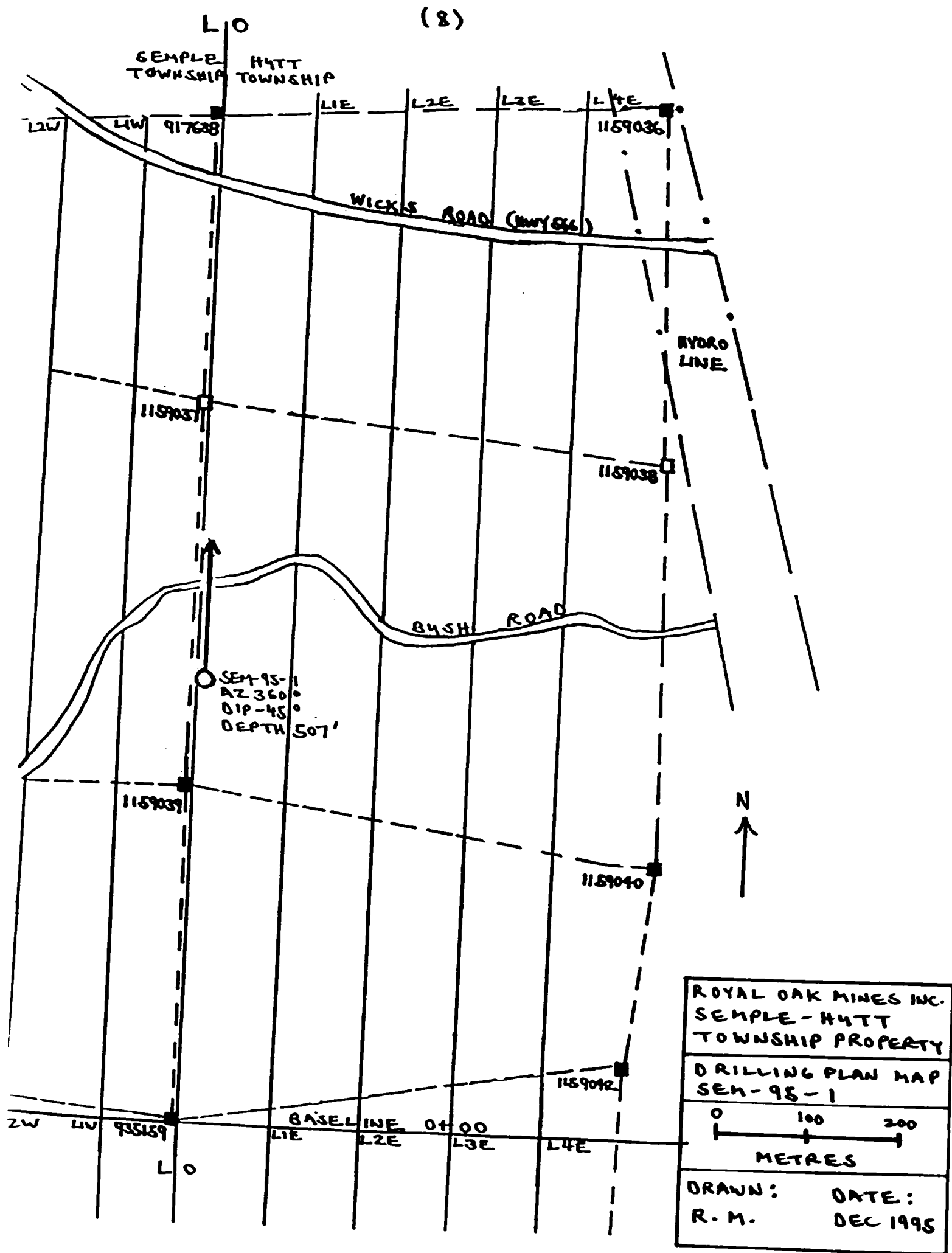
SEM95-2C successfully penetrated 110 feet of overburden and then intersected a series of greywacke/graphitic argillite sediments and brecciated intermediate volcanics with a graphitic matrix. The anomaly can be explained by sections of semi-massive pyrrhotite containing coarse subhedral pyrite in brecciated intermediate volcanics.

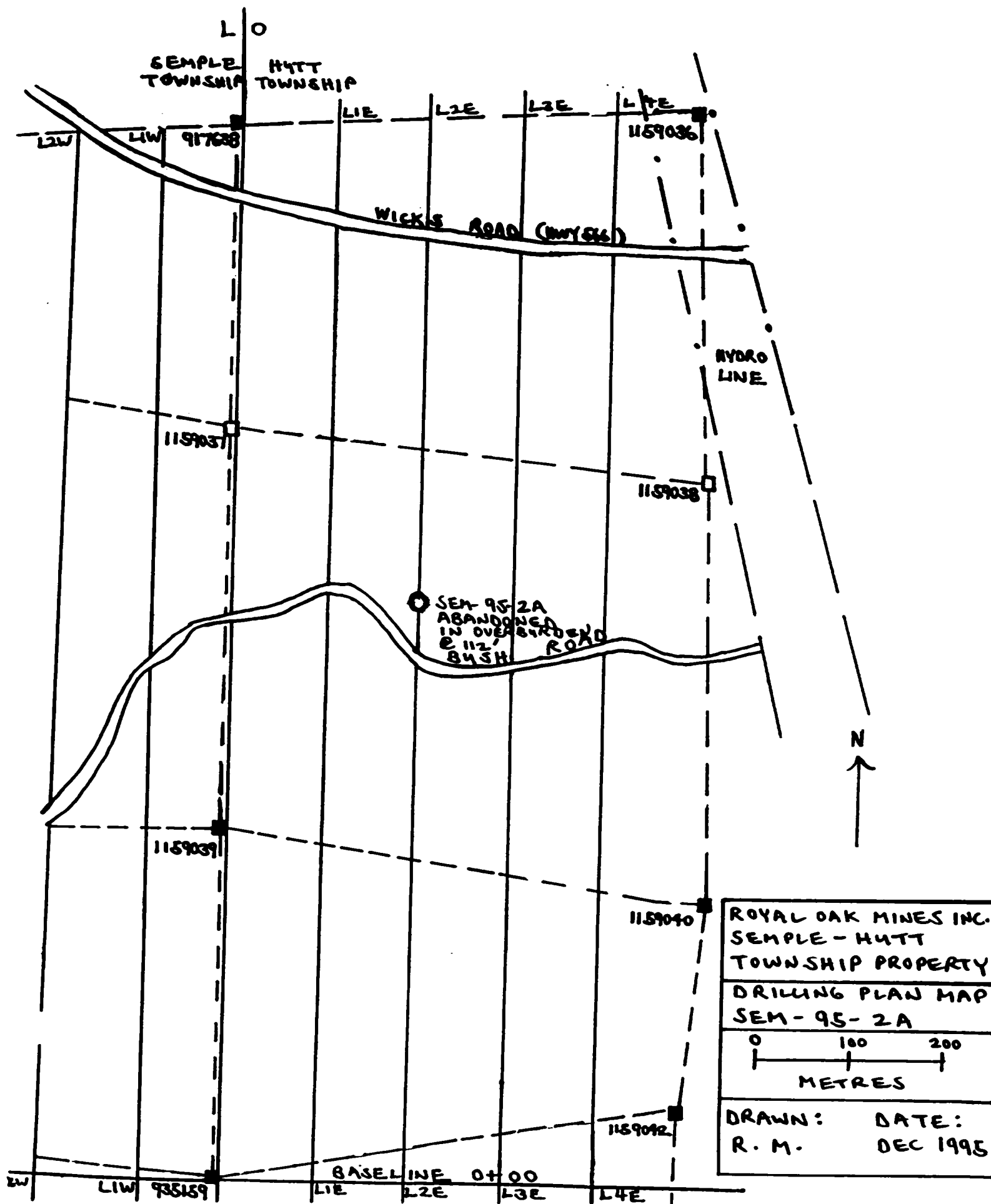
SEM95-3 was drilled to explain an I.P. anomaly located at L1+00W, 0+25N with Moderate Conductivity, Small Metal Factor, and High I.P. Effect. The drill hole intersected a series of massive to brecciated intermediate volcanics. The anomaly can be explained by coarse pyrrhotite and pyrite mineralization in a graphitic matrix surrounding intermediate volcanic fragments.

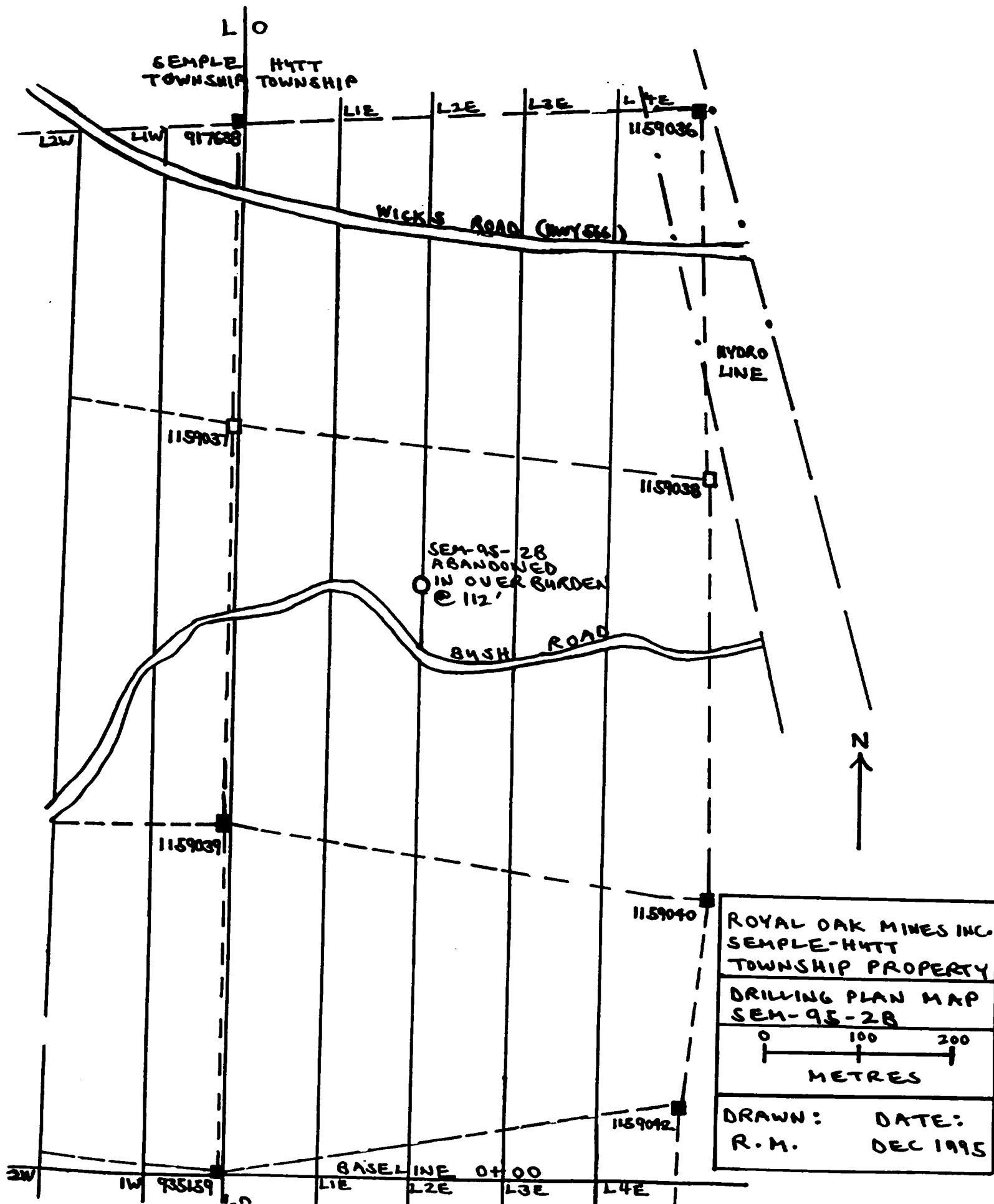


**Table 2****Summary of Drill Footage by Claim Number**

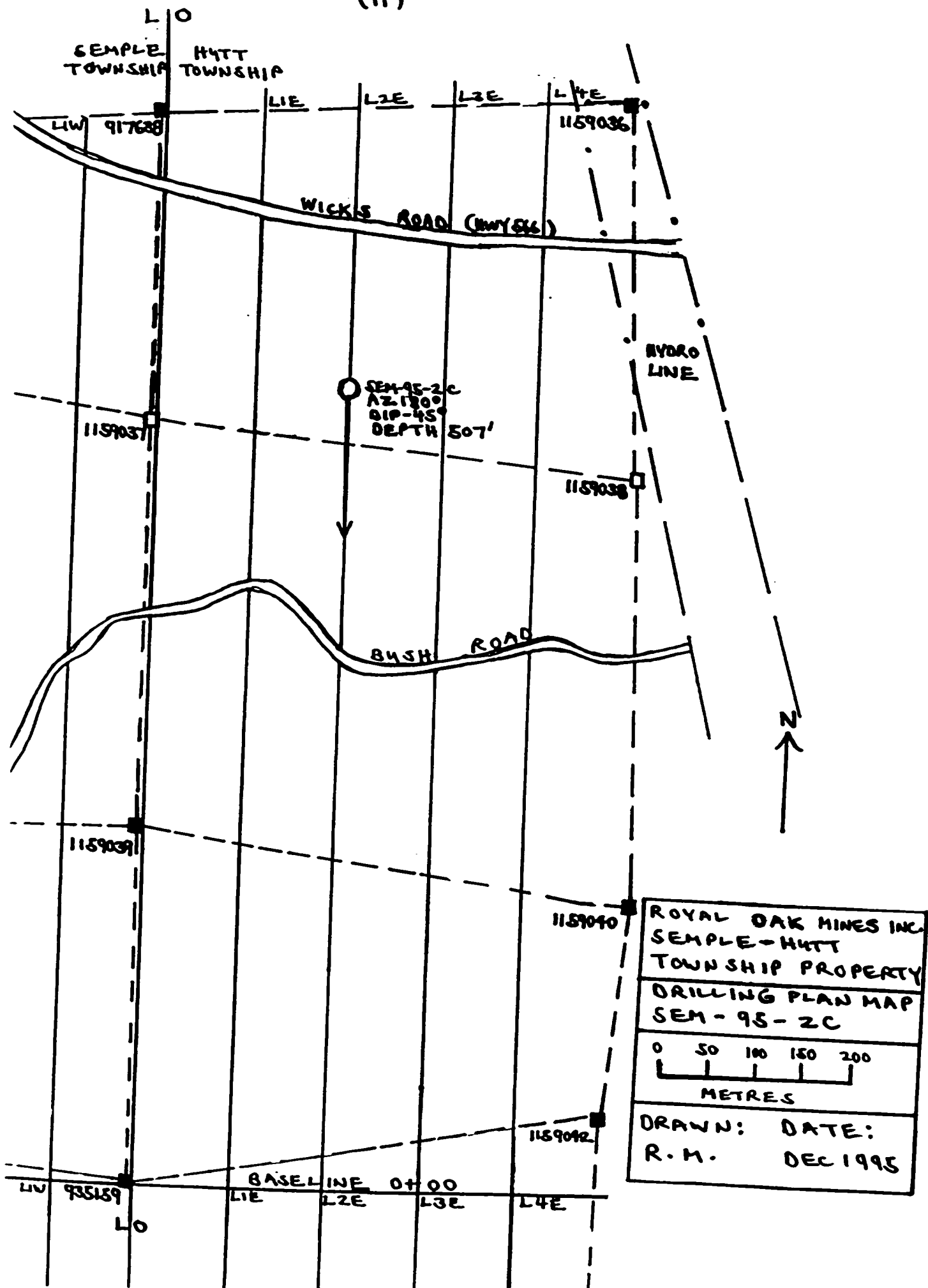
<b>Hole No.</b>	<b>Total Length</b>	<b>Claim 935159</b>	<b>Claim 1159036</b>	<b>Claim 1159037</b>	<b>Claim 1159038</b>	<b>Claim 1159039</b>
SEM95-1	507	0	0	0	507	0
SEM95-2A	112	0	0	0	112	0
SEM95-2B	112	0	0	0	112	0
SEM95-2C	507	0	164	0	343	0
SEM95-3	497	164	0	0	0	333
<b>5 holes</b>	<b>1,735</b>	<b>164</b>	<b>164</b>	<b>0</b>	<b>1,074</b>	<b>333</b>

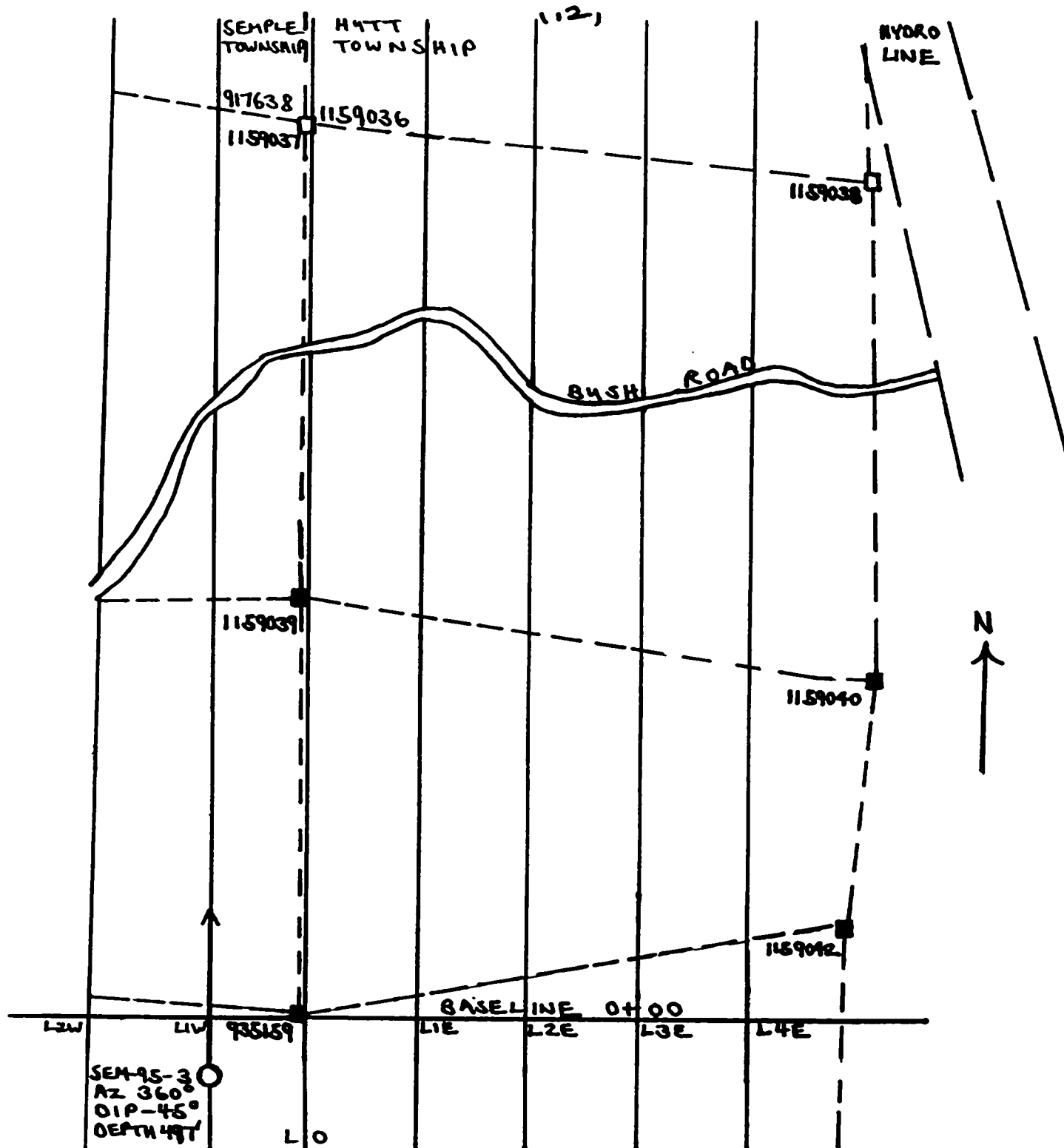






(11)





ROYAL OAK MINES INC.	
SEMPLER-H4TT TOWNSHIP PROPERTY	
DRILLING PLAN MAP HOLE SEM-95-3	
<p>0 100 200 300 METRES</p>	
DRAWN: R.M.	DATE: DEC 1995

## **5.0 Assay Results**

A total of 63 samples were analysed for Au, Ag, Cu, Zn, and Pb by the Royal Oak Analytical Laboratory.

No anomalous gold, silver or lead values were returned. Three samples from SEM95-1 of sulphide mineralized graphitic argillite returned anomalous values of 407, 115 and 750 ppm Cu and values of 1900, 1911 and 1200 ppm Zn.

## **6.0 Conclusions and Recommendations**

Resistivity and Mag highs on lines 0 to 3E north of the baseline still require drill testing.

Further work on the property should consist of mechanical stripping of near surface outcrops to expose possible additional auriferous quartz veins similar to the Decker Showing in a favourable volcanic environment.

**List of References**

- Gilman, W. (1995)      Royal Oak Mines Inc., Supplementary Report, Semple-Hutt Property**
- Harvey, P. (1994)      Royal Oak Mines Inc., Semple-Hutt Property 1994 Assessment Report, Geophysics**
- Hogan, J. (1988)      Pamorex Minerals Inc., 1987 Exploration Summary Report, Decker Property, Semple Township**
- Londry, D. (1987)      Report on Geophysical Work, Decker Property, Semple Township**
- O.D.M. Map 2291 (1968)      Semple and Hutt Townships**

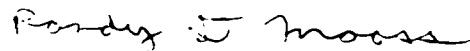


## STATEMENT OF QUALIFICATIONS

I, Randy D. Maass, of the City of Timmins, Province of Ontario, do hereby certify that:

- 1 I received a B.Sc. degree (Honours) in Geology from Brock University, St. Catharines, Ontario, in 1983.
- 2 I have been employed as a geologist by various mining companies in Ontario since 1983.
- 3 I am the author of this report.
- 4 I have no direct interest, nor do I have any shares of any company exploring the properties described in this report, nor on any adjacent or surrounding properties.

Dated this 20<sup>th</sup> day of Dec 1995, Timmins, Ontario.



Randy D. Maass  
Geologist  
Eastern Canada Exploration  
Royal Oak Mines Inc.

## **APPENDIX 1**

**Legend, Drill Logs, Assay Certificates**

## LEGEND

### ROCK TYPE (Nam)

4d - INTERMEDIATE VOLCANICS  
5g - GREY WACKE  
5gr - GRAPHITIC ARGILLITE  
OVB - OVERBURDEN

### COLOR (Co)

GG - GREY / GREEN  
GY - GREY  
TN - TAN  
BR - BROWN  
GR - GREEN  
BK - BLACK

### TEXTURE (TEXT)

BRX - BRECCIATED  
BED - BEDDED  
COT - CONTORTED  
MSU - MASSIVE

### GRAIN SIZE (Grs)

FG - FINE GRAINED  
VFG - VERY FINE GRAINED  
MG - MEDIUM GRAINED





ROYAL OAK ANALYTICAL LABORATORY


CERTIFICATE OF ANALYSIS

Exploration 5675-1509

Hole Number: SH-95-1  
 Date Assayed: 11/22/95  
 Week/Tray: 95NOV20/AF038

	SAMPLE NUMBER	COMMENT	Au-Oz/Ton	Au-PPB
1	DXR24101		0.001	35
2	DXR24102		0.006	205
3	DXR24103		0.004	135
4	CONTROL	Control	0.101	3460
5	DXR24104		0.001	35
6	DXR24105		0.001	35
7	DXR24106		0.001	35
8	DXR24107		0.001	35
9	DXR24108		0.001	35
10	DXR24109		0.001	35
11	DXR24110		0.001	35
12	DXR24111		0.004	135
13	DXR24112		0.001	35
14	DXR24113		0.001	35
15	DXR24114		0.001	35
16	DXR24115		0.001	35
17	DXR24116		0.001	35
18	BLANK	Blank	0.001	35
19	DXR24117		0.001	35
20	DXR24118		0.001	35
21	DXR24119			0.001
22	DXR24120		0.001	35
23				
24				

Geologist: P. HARVEY

Chief Chemist: 

Exploration Copy

ROYAL OAK ANALYTICAL LABORATORY

CERTIFICATE OF ANALYSIS

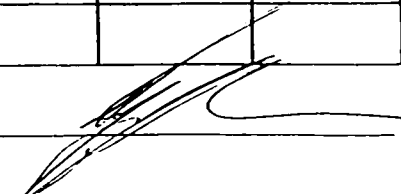
Expiration 5675-1509

SH-95-1

DATE: Nov 27/45

	SAMPLE NUMBER	Ag ppm	Cu ppm	Zn ppm	Pb ppm			
1	DXR 24101	2.96	145.	620.	19.			
2	02	.23	407.	190.	34.			
3	03	.39	115.	1911.	74.			
4	04	.67	750.	1200.	81.			
5	05	.09	132.	190.	19.			
6	06	.08	138.	520.	19.			
7	07	.04	139.	350.	17.			
8	08	.09	136.	410.	17.			
9	09	.10	136.	520.	20.			
10	10	.20	133.	430.	22.			
11	11	.05	79.	130.	19.			
12	12	.04	97.	170.	16.			
13	13	.06	103.	150.	16.			
14	14	.04	114.	240.	17.			
15	15	.08	125.	250.	18.			
16	16	.08	118.	220.	16.			
17	17	.08	101.	160.	16.			
18	18	.17	172.	300.	20.			
19	19	.08	117.	200.	17.			
20	DXR 24120	.10	125.	320.	18.			
21								
22								
23								
24								

Lab16 P. Harvey

Chief Chemist: 





**PAMOREX**

PROJECT: SEMPLE - HMTT

Logged By:

*Randy Hoass*  
R. MAASS

PAGE 1

HMTT TOWNSHIP  
CLAIM # 1159038 CAT

Date: 19/11/1995  
Page 1 of 1

DRILL HOLE	NORTHING	EASTING	ELEVATION	LENGTH	OBI	OBE	INC	LEASE
SEM-88-28	6435 N	2100 E						

DIST	AZIM	DIP	DIST	AZIM	DIP	DIST	AZIM	DIP	DIST	AZIM	DIP	DIST	AZIM	DIP
0.00	360°	45°												

DIST	Id	ROCK DESCRIPTION						STRUCT.			MINERALS						Spl #	Width	T	COMMENTS 1	COMMENTS 2													
		Com	Grs	Text	Co	Alt	Nam	B	A1	A2	A%	B%	C%	D%	E%	F%																		

NOV 19 1995  
HOLE ABANDONED NOV 19 1995  
DRILLING CONTACTOR: MACKENZIE  
DRILLING LTD., TIMMINES, ONT.







ROYAL OAK ANALYTICAL LABORATORY


CERTIFICATE OF ANALYSIS

Exploration 5675-1509

Hole Number: SEM-95-2C  
 Date Assayed: 11/29/95  
 Week/Tray: 95NOV27/AF025

	SAMPLE NUMBER	COMMENT	Au-Oz/Ton	Au-PPB
1	DXR24121		0.013	445
2	DXR24122		0.003	105
3	DXR24123		0.004	135
4	DXR24124		0.002	70
5	DXR24125		0.002	70
6	DXR24126		0.001	35
7	CONTROL	Control	0.098	3360
8	DXR24127		0.001	35
9	DXR24128		0.002	70
10	DXR24129		0.001	35
11	DXR24130		0.001	35
12	DXR24131		0.001	35
13	DXR24132		0.001	35
14	DXR24133		0.001	35
15	BLANK	Blank	0.001	35
16	DXR24134		0.003	105
17	DXR24135		0.002	70
18	DXR24136		0.001	35
19	DXR24137		0.001	35
20	DXR24138		0.001	35
21				
22				
23				
24				

Geologist: P. HARVEY

Chief Chemist: 

Exploration Copy

ROYAL OAK ANALYTICAL LABORATORY


CERTIFICATE OF ANALYSIS

Exploration 5675-1509

Hole Number: SEM-95-2C  
 Date Assayed: 11/30/95  
 Week/Tray: 95NOV27/AF031

	SAMPLE NUMBER	COMMENT	Au-Oz/Ton	Au-PPB
1	DXR24139	Control	0.001	35
2	CONTROL		0.102	3500
3	DXR24140		0.001	35
4	DXR24141		0.001	35
5	DXR24142		0.007	240
6	DXR24143		0.001	35
7	DXR24144		0.001	35
8	DXR24145		0.001	35
9	DXR24146		0.001	35
10	DXR24147		0.001	35
11	BLANK	Blank	0.001	35
12	DXR24148		0.001	35
13	DXR24149		0.001	35
14	DXR24150		0.001	35
15	DXR24151		0.001	35
16	DXR24152		0.001	35
17				
18				
19				
20				
21				
22				
23				
24				

Geologist: PETER HARVEY

Chief Chemist: 

Exploration Copy

# ROYAL OAK ANALYTICAL LABORATORY

## ASSAY REPORT

TRAY NO. \_\_\_\_\_

 TYPE: SM-95-2C

 LOCATION: EXPLORATION 5675-1509

 DATE: NOV. 29/95

NO.	SAMPLE NUMBER	Au	ppm Ag	Ni %	Cu ppm	Zn ppm	Pb ppm	Fe %
1	DVR 24121		.1		41.	70.	17.	
2	22		.1		41.	78.	15.	
3	23		.1		80.	84.	22.	
4	24		.1		73.	114.	22.	
5	25		.1		78.	85.	19.	
6	26		.1		71.	78.	14.	
7	27		.1		84.	108.	18.	
8	28		.1		64.	97.	16.	
9	29		.2		102.	158.	18.	
10	30		.1		100.	97.	17.	
11	31		.1		103.	149.	18.	
12	32		.2		90.	155.	17.	
13	33		.1		95.	196.	17.	
14	34		.2		107.	164.	20.	
15	35		.2		100.	240.	18.	
16	36		.2		112.	320.	21.	
17	37		.1		101.	133.	22.	
18	DVR 24138		.2		91.	141.	20.	
19								
20	MA-2B		.5		195.	87.	34.	
21								
22								
23								
24								
25								
26								
27								
28								
29								
30								
31								
32								
33								
34								
35								

ASSAYER \_\_\_\_\_

29/100  
**ROYAL OAK ANALYTICAL LABORATORY**  
**ASSAY REPORT**

TRAY NO. \_\_\_\_\_

TYPE: SM-95-2C

LOCATION: EXPLORATION 5675-1509

DATE: Nov. 29/95

NO.	SAMPLE NUMBER	Au	PPM Ag	Ni %	Cu PPM	Zn PPM	Pb PPM	Fe %
1	DXR 24139		.1		92.	185.	15.	
2	40		.1		84.	146.	15.	
3	41		.1		83.	162.	18.	
4	42		.1		99.	114.	14.	
5	43		.1		102.	262.	20.	
6	44		.1		92.	180.	18.	
7	45		.2		72.	120.	26.	
8	46		.6		64.	130.	16.	
9	47		.2		45.	82.	16.	
10	48		.1		49.	83.	20.	
11	49		.2		41.	82.	15.	
12	50		.2		56.	94.	21.	
13	51		.2		65.	110.	21.	
14	DXR 24152		.3		150.	390.	37.	
15								
16	MA-2B		.6		201.	86.	34.	
17								
18								
19								
20								
21								
22								
23								
24								
25								
26								
27								
28								
29								
30								
31								
2								
33								
34								
35								

ASSAYER 





## ROYAL OAK ANALYTICAL LABORATORY

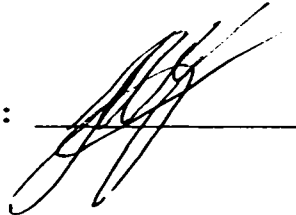
CERTIFICATE OF ANALYSIS

Exploration 5675-1509

Hole Number: SEM-95-3  
Date Assayed: 12/04/95  
Week/Tray: 95NOV27/AF052

	SAMPLE NUMBER	COMMENT	Au-Oz/Ton	Au-PPB
1	BLANK	Blank	0.001	35
2	DXR24153		0.001	35
3	DXR24154		0.001	35
4	DXR24155		0.001	35
5	DXR24156		0.001	35
6	DXR24157		0.001	35
7	DXR24158		0.001	35
8	DXR24159		0.001	35
9	DXR24160		0.001	35
10	CONTROL	Control	0.100	3430
11	DXR24161		0.001	35
12	DXR24162		0.001	35
13	DXR24163		0.001	35
14				
15				
16				
17				
18				
19				
20				
21				
22				
23				
24				

Geologist: P. HARVEY

Chief Chemist: 

Exploration Copy

## ROYAL OAK ANALYTICAL LABORATORY

## ASSAY REPORT

TRAY NO. 29/100TYPE SEM-95-3LOCATION EXPLORATION 5675-1509DATE Nov. 30/95

NO.	SAMPLE NUMBER	Au	PPM	Ni %	Cu	Zn	Pb	Fe %
			Ag		PPM	PPM	PPM	
1	DXR 24153		.2		135.	184.	28.	
2	54		.2		134.	158.	16.	
3	55		.1		149.	217.	20.	
4	56		.2		145.	215.	20.	
5	57		.2		150.	252.	19.	
6	58		.3		270.	710.	22.	
7	59		.2		117.	214.	17.	
8	60		.4		216.	670.	22.	
9	61		.4		231.	820.	24.	
10	62		.4		164.	460.	16.	
11	DXR 24163		.4		139.	269.	28.	
12								
13	MA-2B		.7		218.	88.	32.	
14								
15								
16								
17								
18								
19								
20								
21								
22								
23								
24								
25								
26								
27								
28								
29								
30								
31								
32								
33								
34								
35								

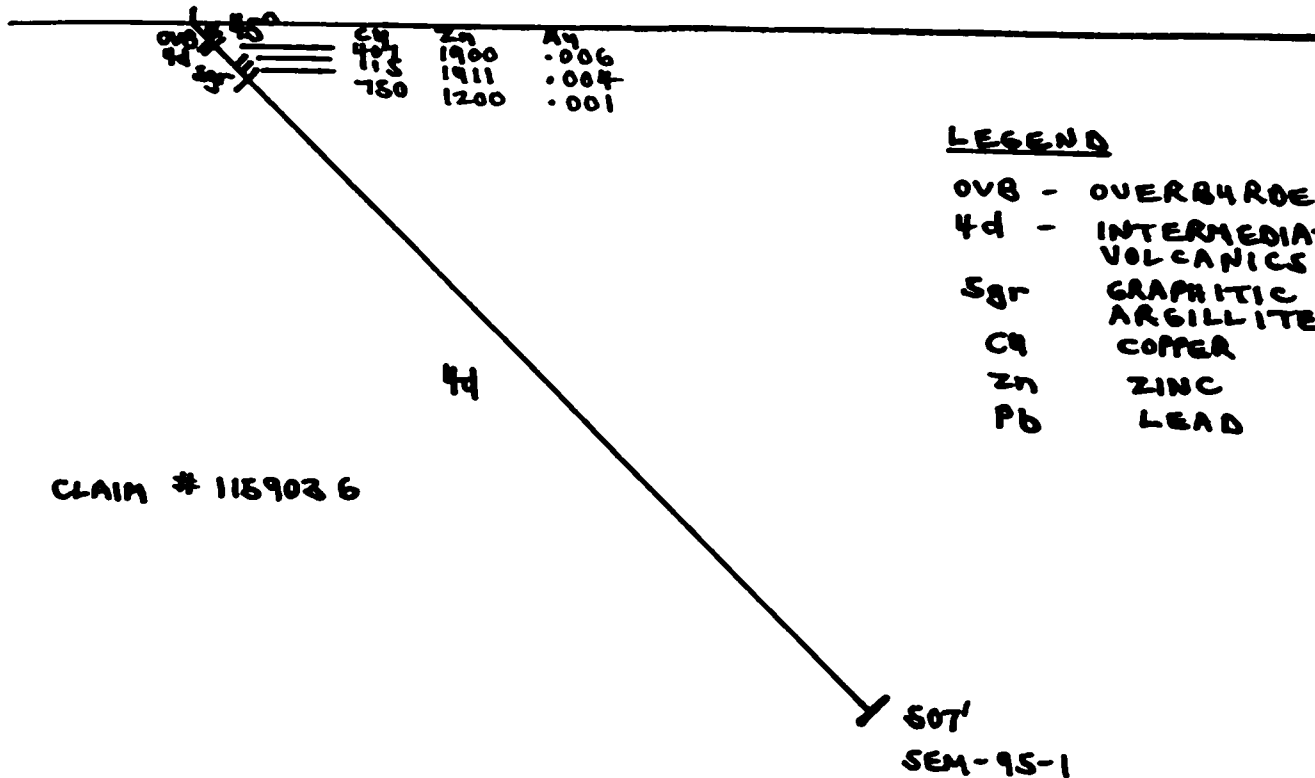
ASSAYER: 

## **APPENDIX 2**

### **Drill Hole Sections**

LO ST00N

Az 360°



LEGEND

OVB - OVERBURDEN  
4d - INTERMEDIATE  
VOLCANICS  
Sgr GRAPHITIC  
ARGILLITE  
Cu COPPER  
Zn ZINC  
Pb LEAD

ROYAL OAK MINES INC. SEMPLER-HUTT TOWNSHIP PROPERTY
DRILL SECTION SEM-95-1
0 100 200 FEET
DRAWN: R.M.      DATE: DEC 1995

L2E 6425N → Az 360°



45°

CLAIM # 1159038

112'

SEM-95-2A

ABANDONED IN OVERBURDEN

ROYAL OAK MINES INC.  
SEMPLER - HATT  
TOWNSHIP PROPERTY

DRILL SECTION  
SEM-95-2A

0 100 200  
|-----|-----|  
FEET

DRAWN: DATE:  
R.M. DEC 1995

L2+00E 6+35N → Az 360°

45°

CLAIM # 1159038

112'

SEM-95-28

ABANDONED IN OVERBURDEN

ROYAL OAK MINES INC.  
SEMPLER - HYTT  
TOWNSHIP PROPERTY

DRILL SECTION  
SEM-95-28

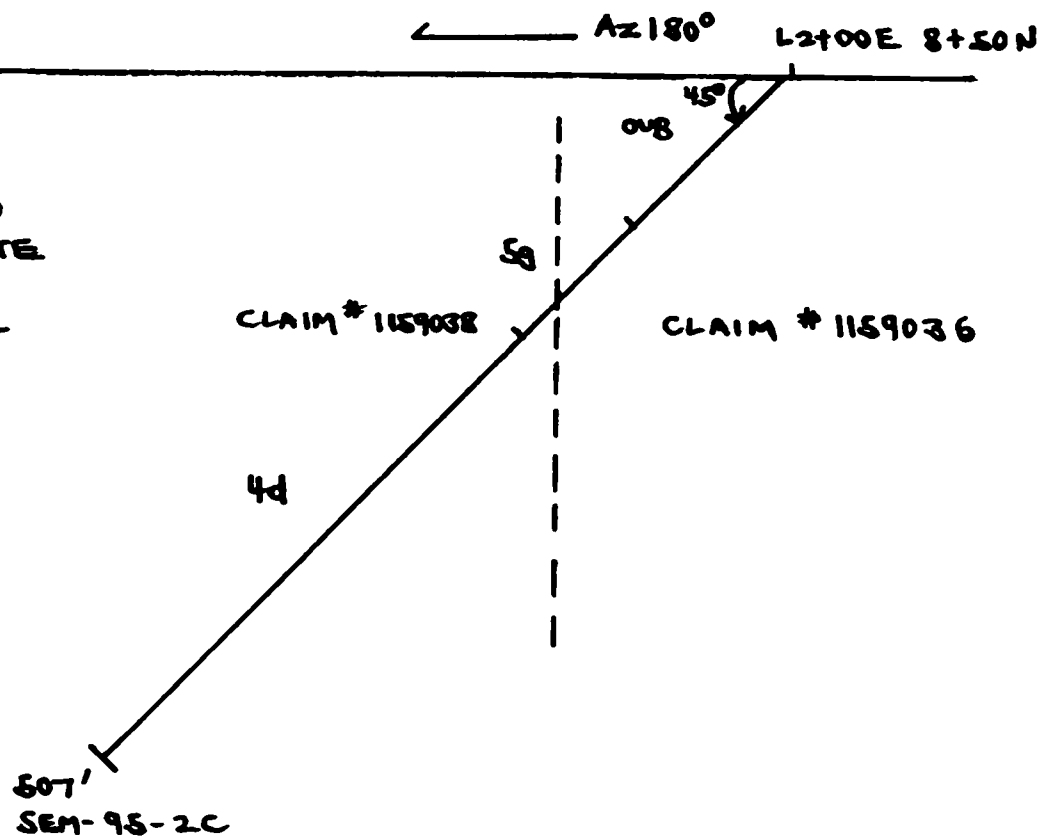
0 100 200

FEEET

DRAWN: DATE:  
R.M. DEC 1995

LEGEND

OVB - OVER BURDEN  
4d - INTERMEDIATE  
VOLCANICS  
Sg - GREYWACKE



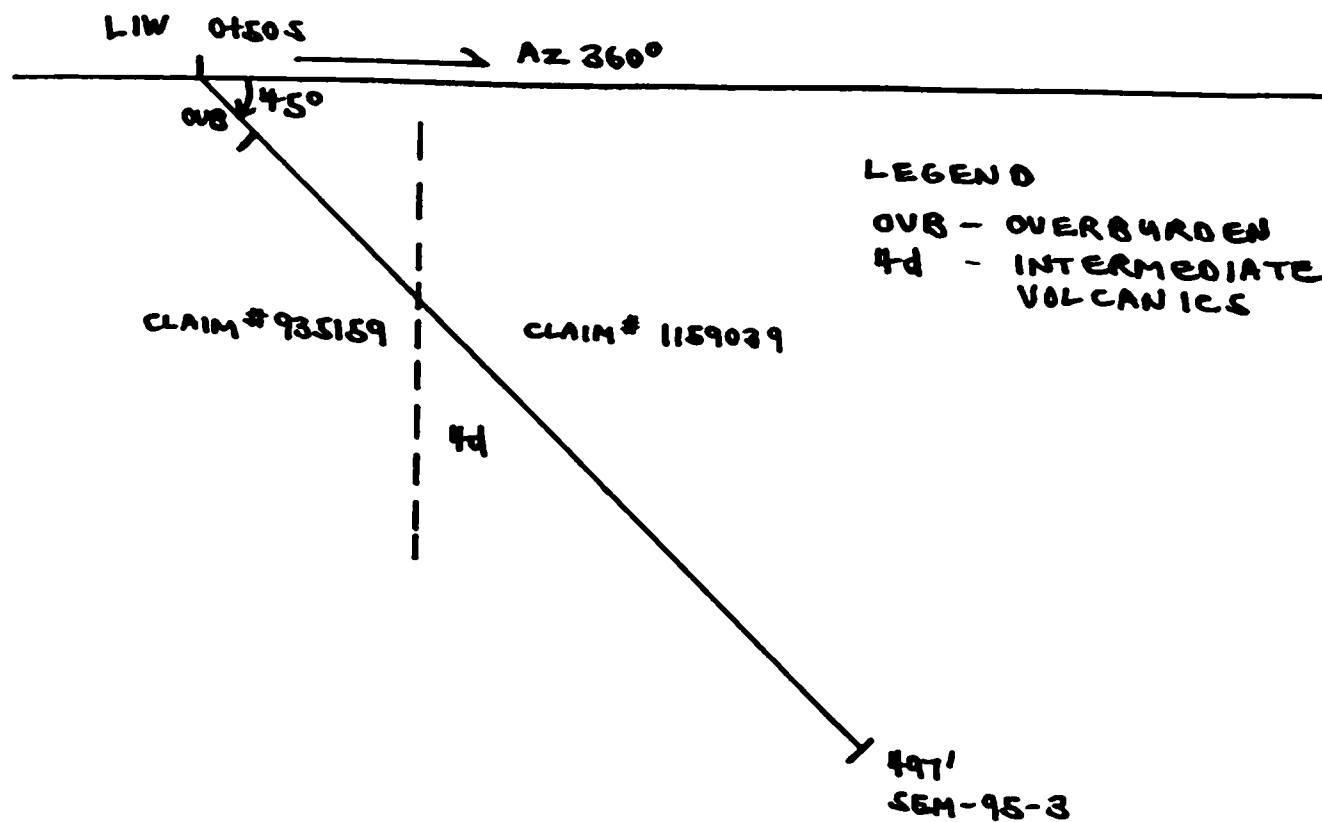
ROYAL OAK MINES INC.  
SEMPLER - HUTT  
TOWNSHIP PROPERTY

DRILL SECTION  
SEM-95-2C

0 100 200  
F E E T

DRAWN: DATE:  
R. M. DEC 1995





ROYAL OAK MINES INC.	
SEMPLE - HUTT	
TOWNSHIP PROPERTY	
DRILL SECTION	
SEM-95-3	
DRAWN:	DATE:
R.M.	DEC 1995



# Report of Work Conducted After Recording Claim

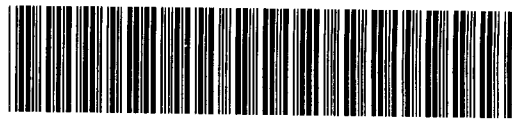
## Mining Act

Transaction Number

W9560.00546

Personal information collected on this form is obtained under the authority of the Mining Act. This information will be used for correspondence. Questions about this collection should be directed to the Provincial Manager, Mining Lands, Ministry of Northern Development and Mines, Fourth Floor, 159 Cedar Street, Sudbury, Ontario, P3E 6A5, telephone (705) 670-7264.

- Instructions:**
- Please type or print and submit in duplicate.
  - Refer to the Mining Act and Regulations for rec Recorder.
  - A separate copy of this form must be complete.
  - Technical reports and maps must accompany this form in duplicate.
  - A sketch, showing the claims the work is assigned to, must accompany this form.



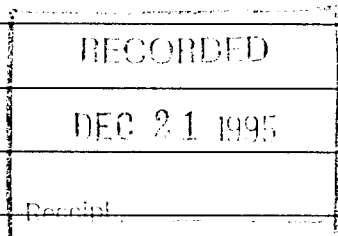
42A03SE0023 W9560-00546 HUTT

900

Recorded Holder(s) ROYAL OAK MINES INC.		Client No. 136226
Address P.O. BAG 2010, TIMMINS, ONTARIO P4N 7X7		Telephone No. 360-1141
Mining Division Percepible.	Township/Area Sample and Hutt Townships	M or G Plan No. M-1100 and G-3948
Dates Work Performed	From: Nov 9, 1995	To: Dec 8, 1995

**Work Performed (Check One Work Group Only)**

Work Group	Type
<input type="checkbox"/> Geotechnical Survey	
<input checked="" type="checkbox"/> Physical Work, Including Drilling	Diamond Drilling.
<input type="checkbox"/> Rehabilitation	
<input type="checkbox"/> Other Authorized Work	
<input type="checkbox"/> Assays	
<input type="checkbox"/> Assignment from Reserve	



Total Assessment Work Claimed on the Attached Statement of Costs \$ 50,203

**Note:** The Minister may reject for assessment work credit all or part of the assessment work submitted if the recorded holder cannot verify expenditures claimed in the statement of costs within 30 days of a request for verification.

**Persons and Survey Company Who Performed the Work (Give Name and Address of Author of Report)**

Name	Address
Randy Maass (Author)	% Royal Oak Mines Inc. - address above
Peter Harvey - Project Geologist	% Royal Oak Mines Inc. - address above
MacKenzie Drilling Ltd.	P.O. Box 53, Timmins, Ont. P4N 7C5

(attach a schedule if necessary)

**Certification of Beneficial Interest \* See Note No. 1 on reverse side**

I certify that at the time the work was performed, the claims covered in this work report were recorded in the current holder's name or held under a beneficial interest by the current recorded holder.	Date Dec 4 '95	Recorded Holder or Agent (Signature) Peter Harvey.
--	-------------------	---

**Certification of Work Report**

I certify that I have a personal knowledge of the facts set forth in this Work report, having performed the work or witnessed same during and/or after its completion and annexed report is true.		
Name and Address of Person Certifying Peter Harvey % Royal Oak Mines Inc. - address above.		
Telephone No. 360-1141	Date Dec 4 '95	Certified By (Signature) Peter Harvey.

**For Office Use Only**

Total Value Cr. Recorded \$ 50,203.	Date Recorded	Mining Recorder	Received Stamp DEC 21 1995
Deemed Approval Date MARCH 21/96	Date Approved MAR 21, 1996		
Date Notice for Amendments Sent			

Work Report Number for Applying Reserve	Claim Number (see Note 2)	Number of Claim Units
	935135	1
	935136	1
	935140	1
	935143	1
	935147	1
	935155	1
	935156	1
	935157	1
	935159	1
	935160	1
	935161	1
	917638	1
	917639	1
	1159037	1
	1159039	1
	1159036	1
	1159038	1
Total Number of Claims		

Value of Assessment of Work Done on this Claim	Value Applied to this Claim
0	800
0	800
0	800
0	800
0	800
0	800
0	800
0	800
4,769	800
0	400
0	400
0	400
0	400
0	400
9,539	800
4,769	800
31,126	800
Total Value Work Done	
Total Value Work Applied	

Value Assigned from this Claim	Reserve: Work to be Claimed at a Future Date
3692	277
8739	
3969	
12000	18,326
Total Assigned From	
Total Reserve	

Credits you are claiming in this report may be cut back. In order to minimize the adverse effects of such deletions, please indicate from which claims you wish to prioritize the deletion of credits. Please mark (✓) one of the following:

- Credits are to be cut back starting with the claim listed last, working backwards.
- Credits are to be cut back equally over all claims contained in this report of work.
- Credits are to be cut back as prioritized on the attached appendix.

In the event that you have not specified your choice of priority, option one will be implemented.

**Note 1:** Examples of beneficial interest are unrecorded transfers, option agreements, memorandum of agreements, etc., with respect to the mining claims.

**Note 2:** If work has been performed on patented or leased land, please complete the following:

I certify that the recorded holder had a beneficial interest in the patented or leased land at the time the work was performed.	Signature	Date
---	-----------	------





**Statement of Costs  
for Assessment Credit**

**État des coûts aux fins  
du crédit d'évaluation**

**Mining Act/Loi sur les mines**

Transaction No./N° de transaction  
**W9560.00546**

Personal information collected on this form is obtained under the authority of the **Mining Act**. This information will be used to maintain a record and ongoing status of the mining claim(s). Questions about this collection should be directed to the Provincial Manager, Minings Lands, Ministry of Northern Development and Mines, 4th Floor, 159 Cedar Street, Sudbury, Ontario P3E 6A5, telephone (705) 670-7264.

Les renseignements personnels contenus dans la présente formule sont recueillis en vertu de la **Loi sur les mines** et serviront à tenir à jour un registre des concessions minières. Adresser toute question sur la collecte de ces renseignements au chef provincial des terrains miniers, ministère du Développement du Nord et des Mines, 159, rue Cedar, 4<sup>e</sup> étage, Sudbury (Ontario) P3E 6A5, téléphone (705) 670-7264.

**1. Direct Costs/Coûts directs**

Type	Description	Amount Montant	Totals Total global
Wages Salaires	Labour Main-d'oeuvre		
	Field Supervision Supervision sur le terrain	1,200	1,200
Contractor's and Consultant's Fees Droits de l'entrepreneur et de l'expert- conseil	Type Mackenzie Drilling	46,907	
			46,907
Supplies Used Fournitures utilisées	Type Assays	1,197	
	Core Boxes	396	
			1593
Equipment Rental Location de matériel	Type		
<b>Total Direct Costs Total des coûts directs</b>			<b>49,700</b>

**2. Indirect Costs/Coûts indirects**

\*\* Note: When claiming Rehabilitation work Indirect costs are not allowable as assessment work.  
Pour le remboursement des travaux de réhabilitation, les coûts indirects ne sont pas admissibles en tant que travaux d'évaluation.

Type	Description	Amount Montant	Totals Total global
Transportation Transport	Type Truck Rental	366	
	Gas	137	
			503
Food and Lodging Nourriture et hébergement			
Mobilization and Demobilization Mobilisation et démobilisation			
<b>Sub Total of Indirect Costs Total partiel des coûts indirects</b>			<b>503</b>
Amount Allowable (not greater than 20% of Direct Costs) Montant admissible (n'excédant pas 20 % des coûts directs)			<b>503</b>
Total Value of Assessment Credit (Total of Direct and Allowable indirect costs)			<b>50,203</b>
Valeur totale du crédit d'évaluation (Total des coûts directs et indirects admissibles)			<b>50,203</b>

Note: The recorded holder will be required to verify expenditures claimed in this statement of costs within 30 days of a request for verification. If verification is not made, the Minister may reject for assessment work all or part of the assessment work submitted.

Note : Le titulaire enregistré sera tenu de vérifier les dépenses demandées dans le présent état des coûts dans les 30 jours suivant une demande à cet effet. Si la vérification n'est pas effectuée, le ministre peut rejeter tout ou une partie des travaux d'évaluation présentés.

**Filing Discounts**

1. Work filed within two years of completion is claimed at 100% of the above Total Value of Assessment Credit.
2. Work filed three, four or five years after completion is claimed at 50% of the above Total Value of Assessment Credit. See calculations below:

Total Value of Assessment Credit	Total Assessment Claimed
	× 0.50 =

**Remises pour dépôt**

1. Les travaux déposés dans les deux ans suivant leur achèvement sont remboursés à 100 % de la valeur totale susmentionnée du crédit d'évaluation.
2. Les travaux déposés trois, quatre ou cinq ans après leur achèvement sont remboursés à 50 % de la valeur totale du crédit d'évaluation susmentionné. Voir les calculs ci-dessous.

Valeur totale du crédit d'évaluation	Evaluation totale demandée
	× 0,50 =

**Certification Verifying Statement of Costs**

I hereby certify:  
that the amounts shown are as accurate as possible and these costs were incurred while conducting assessment work on the lands shown on the accompanying Report of Work form.

that as Project Geologist I am authorized  
(Recorded Holder, Agent, Position in Company)

to make this certification

**Attestation de l'état des coûts**

J'atteste par la présente :  
que les montants indiqués sont le plus exact possible et que ces dépenses ont été engagées pour effectuer les travaux d'évaluation sur les terrains indiqués dans la formule de rapport de travail ci-joint.

Et qu'à titre de \_\_\_\_\_ je suis autorisé  
(titulaire enregistré, représentant, poste occupé dans la compagnie)

à faire cette attestation.

Signature <u>Peter Harvey</u>	Date <u>Dec 4 '95</u>
----------------------------------	--------------------------

Ministry of  
Northern Development  
and MinesMinistère du  
Développement du Nord  
et des Mines(705) 360-8330  
Fax: 360-2001**File: W9560.00546**

September 24, 1996

Mr. Peter Harvey  
Royal Oak Mines Inc.  
P.O. Bag 2010  
Timmins, ON  
P4N 7X7

Dear Mr. Harvey:

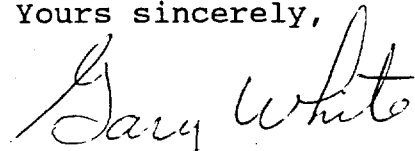
**Subject: APPROVAL OF ASSESSMENT WORK CREDIT ON MINING LAND,  
CLAIMS P-935159 et al IN SEMPLE AND HUTT TOWNSHIPS**

A 45 Day Notification was not issued on this Work Report prior to the 90 day deemed approval date as outlined in subsection 6(7) of the Assessment Work Regulation. Accordingly, this submission is **deemed approved as of March 21, 1996.**

The assessment work credit has been deemed approved under Section 16 (Exploratory Drilling) of the Assessment Work Regulation.

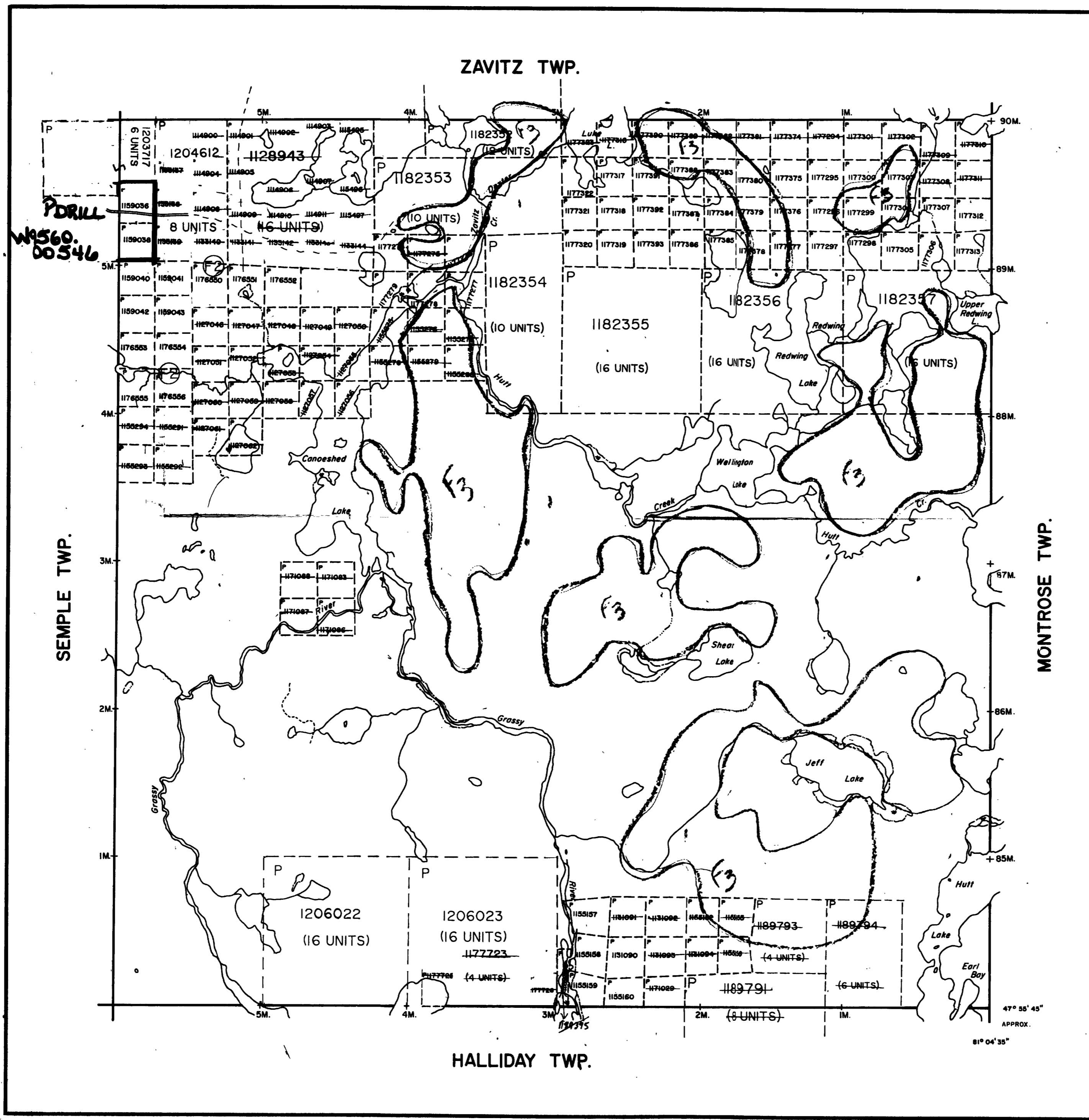
If you have any questions regarding this correspondence, please contact Terry Binkley at (705) 360-8338.

Yours sincerely,

Gary White  
Mining Recorder  
Porcupine Mining Division

/tb

cc: Ron Gashinski, Senior Manager, Mining Lands



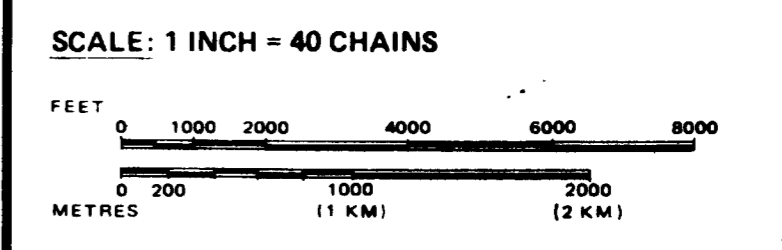
### LEGEND

- HIGHWAY AND ROUTE No.
- OTHER ROADS
- TRAILS
- SURVEYED LINES:
  - TOWNSHIPS, BASE LINES, ETC.
  - LOTS, MINING CLAIMS, PARCELS, ETC.
- UNSURVEYED LINES:
  - LOT LINES
  - PARCEL BOUNDARY
  - MINING CLAIMS ETC.
- RAILWAY AND RIGHT OF WAY
- UTILITY LINES
- NON-PERENNIAL STREAM
- FLOODING OR FLOODING RIGHTS
- SUBDIVISION OR COMPOSITE PLAN
- RESERVATIONS
- ORIGINAL SHORELINE
- MARSH OR MUSKEG
- MINES
- TRAVERSE MONUMENT

### DISPOSITION OF CROWN LANDS

TYPE OF DOCUMENT	SYMBOL
PATENT, SURFACE & MINING RIGHTS	●
" SURFACE RIGHTS ONLY	○
" MINING RIGHTS ONLY	◐
LEASE, SURFACE & MINING RIGHTS	■
" SURFACE RIGHTS ONLY	◼
" MINING RIGHTS ONLY	◑
LICENCE OF OCCUPATION	◔
ORDER-IN-COUNCIL	OC
RESERVATION	⊙
CANCELLED	⊖
SAND & GRAVEL	⊕

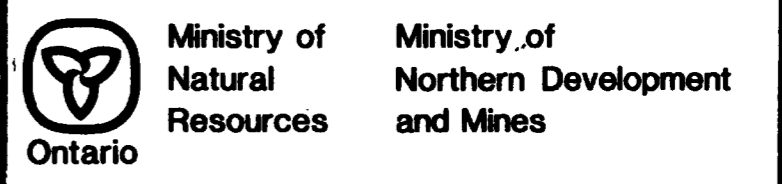
THIS TWP IS SUBJECT TO FOREST ACTIVITY IN 1992/93 - FURTHER INFORMATION ON FILE.  
 THIS TWP IS SUBJECT TO FOREST ACTIVITY IN 1993/94 - FURTHER INFORMATION ON FILE.



THIS TWP IS SUBJECT TO FOREST ACTIVITY IN 1995/96. FURTHER INFORMATION AVAILABLE ON FILE.

**TOWNSHIP**  
**HUTT**

M.N.R. ADMINISTRATIVE DISTRICT  
**TIMMINS**  
 MINING DIVISION  
**PORCUPINE**  
 LAND TITLES / REGISTRY DIVISION  
**SUDBURY**



Date JUNE, 1992 Number G-3948  
 ACTIVATED JULY 18, 1992 BY D.C.  
 CHECKED BY G.W.

HULL TWP.

SEMPLE TWP.

MONTROSE TWP.

THE INFORMATION THAT APPEARS ON THIS MAP HAS BEEN COMPILED FROM VARIOUS SOURCES, AND ACCURACY IS NOT GUARANTEED. THOSE WISHING TO STAKE MINING CLAIMS SHOULD CONSULT WITH THE MINING RECORDER, MINISTRY OF NORTHERN DEVELOPMENT AND MINES, FOR ADDITIONAL INFORMATION ON THE STATUS OF THE LANDS SHOWN HEREON.



0011-M

SEMPLT LMB

M-1100

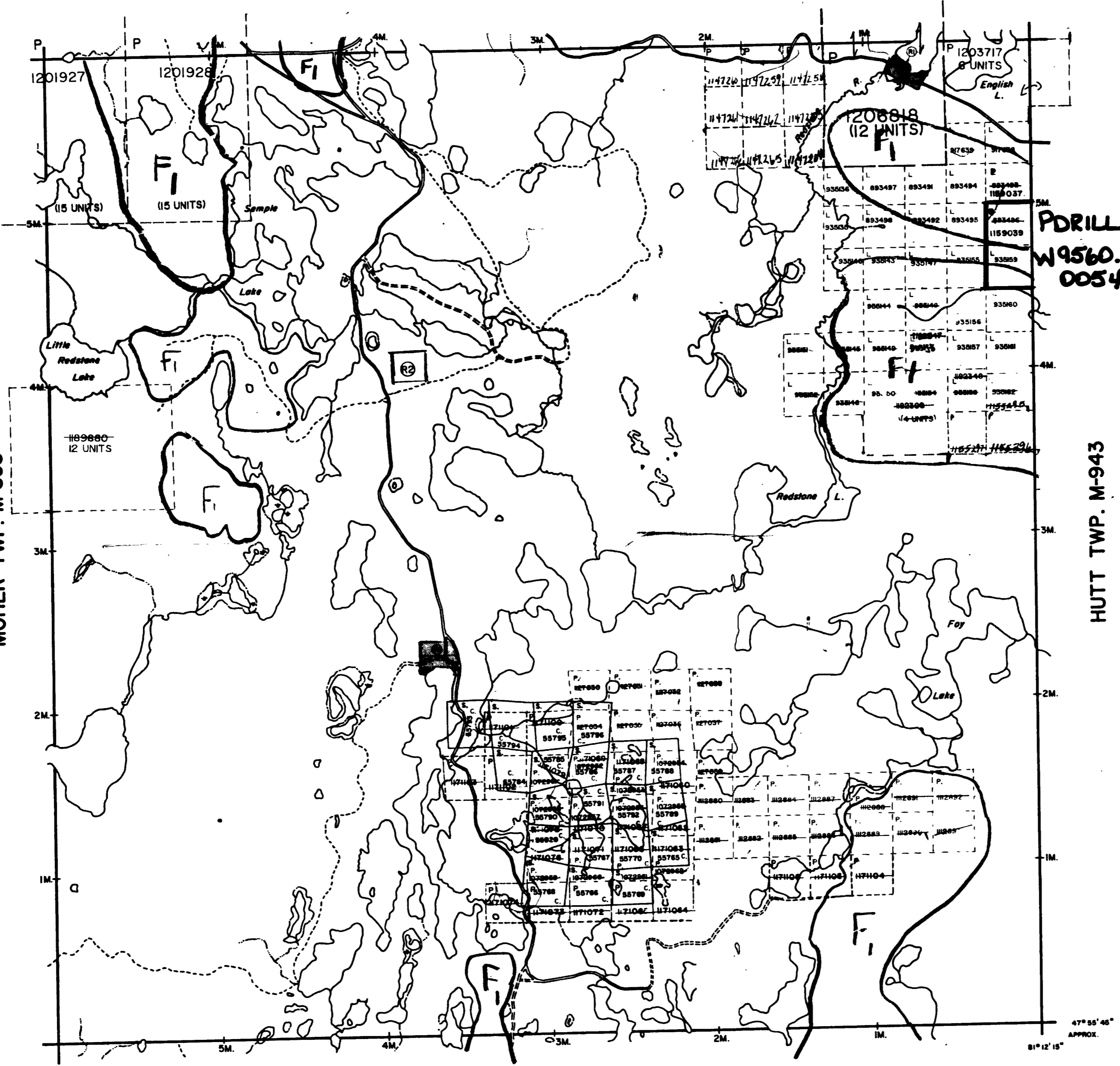
ENGLISH TWP. M-787

MOHER TWP. M-868

HUTT TWP. M-943

SOTHMAN TWP. M-121

THE INFORMATION THAT APPEARS ON THIS MAP HAS BEEN COMPILED FROM VARIOUS SOURCES, AND ACCURACY IS NOT GUARANTEED. THOSE WISHING TO STAKE MINING CLAIMS SHOULD CONSULT WITH THE MINING RECORDER, MINISTRY OF NORTHERN DEVELOPMENT AND MINES, FOR ADDITIONAL INFORMATION ON THE STATUS OF THE LANDS SHOWN HEREON.



NOTES

400' surface rights reservation along the shores of all lakes and rivers.

F - SUBJECT TO FORESTRY ACTIVITY IN 1994/95 1995/96

Areas withdrawn from staking under Section 43 of the Mining Act (R.S.O. 1970)

Order File Date Disposition

(R1) W-9 / 78 188543 10 / 4 / 78 S.R.O.

(R2) MINING AND SURFACE RIGHTS WITHDRAWN FROM PROSPECTING, STAKING OUT, SALE OR LEASE UNDER SECTION 35 OF THE MINING ACT R.S.O. 1990 ORDER NO. W-P 44/794 NER DATED 94-MAY-02

PDRILL W9560.00546

ACTIVATED APRIL 24, 1990 D.C.

LEGEND

- PATENTED LAND
PATENTED FOR SURFACE RIGHTS ONLY
LEASE
LICENSE OF OCCUPATION
CROWN LAND SALES
LOCATED LAND
CANCELLED
MINING RIGHTS ONLY
SURFACE RIGHTS ONLY
HIGHWAY & ROUTE NO.
ROADS
TRAILS
RAILWAYS
POWER LINES
MARSH OR MUSKEG
MINES

TOWNSHIP OF

SEMPLT

DISTRICT OF SUBBURY

PORCUPINE MINING DIVISION

SCALE : 1 INCH = 40 CHAINS (1/2 MILE)

DR. R.W. NOBLE
DATE APR. 22, 71

PLAN NO. M-1100

ONTARIO DEPARTMENT OF MINES AND NORTHERN AFFAIRS

