

Diamond Drilling



42A03SE0184 12 ZAVITZ

010

Township of ZAVITZ

Report NO: 12

Work performed by: Vantage Mining Co. Incorporated

Claim NO	Hole NO	Footage	Date	Note
L 354071	1	672.0'	Apr/75	(1)

Notes:

(1) #157-75

ZAVITZ TWP. #157
 VANTAGE MNG. CO.

PROPERTY OF VANTAGE MINING CO., INC. - ZAVITZ TOWNSHIP

HOLE NUMBER 1
 SHEET NUMBER 1
 SECTION FROM 0 TO 500

DIAMOND DRILL RECORD

LOCATION: LAT. 67.5' NORTH
 DEP. LINE - 00
 ELEVATION OF COLLAR
 DATUM
 DIRECTION AT START: BEARING SOUTHWARD
 DIP - 45°

STARTED APRIL 24, 1975
 COMPLETED MAY 23, 1975
 ULTIMATE DEPTH 672'
 PROPOSED DEPTH 600'

DEPTH FEET	FORMATION	SAMPLE NO.	WIDTH OF SAMPLE	GOLD \$	SLUDGE GOLD \$
0' - 35'	OVERBURDEN				
35' - 79'	MEDIUM GRAINED, ULTRAMAFIC INTRUSIVE, GREY TO GREENISH, CHLORITIC, HARD, POSSIBLY SILICIFIED OR AMPHIBOLIZED (TRIMOLITE), BARREN QUARTZ STRINGERS ~ 30'				
79' - 426'	MEDIUM GRAINED ULTRAMAFIC INTRUSIVE, SERPENTINIZED, TALC-CHLORITE ALTERATION, NUMEROUS CARBONATE STRINGERS IN COMPLEX FRACTURE PATTERNS, SHEARED AND TORN AREAS, GENERALLY 70°-80°, SPARSE FINE TO EXT. FINE PYRITE. STRONG FAULT FROM 370' TO 373'.				
426' - 466'	SECTION CONTAINS 3 FELSIC DIKES (426'-431') (438'-452') AND (459'-466') CONTACT ANGLES FROM 60° TO 80°. DIKES ARE FINE GRAINED, FELSIC, MOSTLY PINK FELSPAR, SOME WHITE FELSPAR AND VERY FINE MUSSOLITE, NUMEROUS CHLORITE BLOTCHES AND FINE STREAKS, FINE DISSEMINATED PYRITE, ABUNDANT AND COARSE IN PLACES. SECTIONS OF TACTO-NIC BRECCIA BETWEEN DIKES, INTENSE CHLORITE AND CARBONATE ALTERATION, QUARTZ CARBONATE VEINS AND FINE DISS. PYRITE.				
			426'-431'	NIL	
			438'-452'	NIL	
			459'-466'	NIL	
466' - 503'	DARK, FINE GRAINED, FRAGMENTAL OR TECTONIC BRECCIA. NUMEROUS DARK FRACTURES, FINE DISS. PYRITE (ORIGIN ANDESITE?)				
503' - 504'	FELSIC DIKE SIMILAR TO (426'-431') LESS FINE PYRITE.				

NORTHERN MINER PRESS LIMITED, TORONTO. STOCK FORM NO. 501 REV. 9/44

DRILLED BY: MARK R. ...

SIGNED: _____

J. R. BOISSON AULT

PROPERTY LAKEVIEW MINING CO. INC. - LAKEVIEW TOWNSHIP

HOLE NUMBER 1

SHEET NUMBER 1

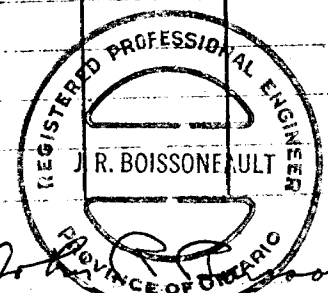
DIAMOND DRILL RECORD

SECTION FROM 508' TO 622'

LOCATION: LAT. 60° 5' NORTH
 DEP. LIME CO.
 ELEVATION OF COLLAR _____
 DATUM _____
 DIRECTION AT START: BEARING SOUTHWARD
 DIP -15°

STARTED APRIL 24, 1975
 COMPLETED MAY 23, 1975
 ULTIMATE DEPTH 672'
 PROPOSED DEPTH 600'

DEPTH FEET	FORMATION	SAMPLE NO.	WIDTH OF SAMPLE	GOLD \$	SLUDGE GOLD \$
508' - 561'	VOLCANIC - ANDESITE, STRONGLY CHLORITIC, FOLIATED IN PLACES 60°-70°, BANDED SECTIONS (TUFFACEOUS), SMALL QUARTZ-CARBONATE VEINLETS, SCARSE FINE PYRITE				
561' - 565'	CARBONACEOUS TUFF, ALTERNATING BANDS OF CHLORITIC MATTEN AND BANDS OF GRANITE AT 75°, CONTACTED SECTIONS, SMALL CONCORDANT QUARTZ-CARBONATE STRINGERS, MORE FINE PYRITE				
565' - 576'	VOLCANIC, SIMILAR TO (508'-561') MORE TUFFACEOUS, AND CARBONIC BANDS				
576' - 579'	CARBONACEOUS TUFF SIMILAR TO (561'-565') MORE PYRITE, SOME COARSE, IN BANDS.				
579' - 588'	VOLCANIC SIMILAR TO (565'-576')				
588' - 612'	CARBONACEOUS TUFF SIMILAR TO (576'-579')				
612' - 657'	MEDIUM GRAINED, GREY RHYOLITE, GRAPHITIC STRAKES 60°-70° UNMINERALIZED, CIRCULAR QUARTZ-CARBONATE STRINGERS SPARSE FINE PYRITE AND PYRITE CUBES IN GRAPHITE SECTIONS				
657' - 667'	RHYOLITE BRECCIA, FRAGMENTS OF GREY TO BLUE RHYOLITE FINE GRAINED MASSIVE 1/4" TO SEVERAL INCHES DIA., BLACK CARBONACEOUS MATRIX WITH ABUNDANT PYRITE IN COARSE DISSEMINATIONS, AND CUBES				
667' - 672'	GREY, MEDIUM GRAINED RHYOLITE, MASSIVE, UNMINERALIZED				



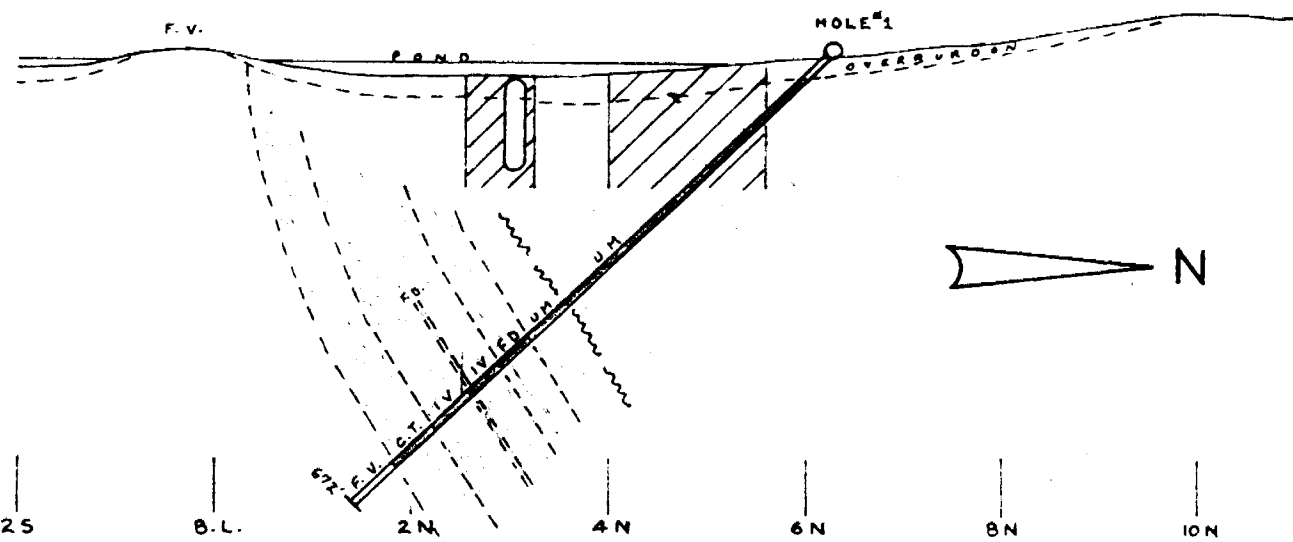
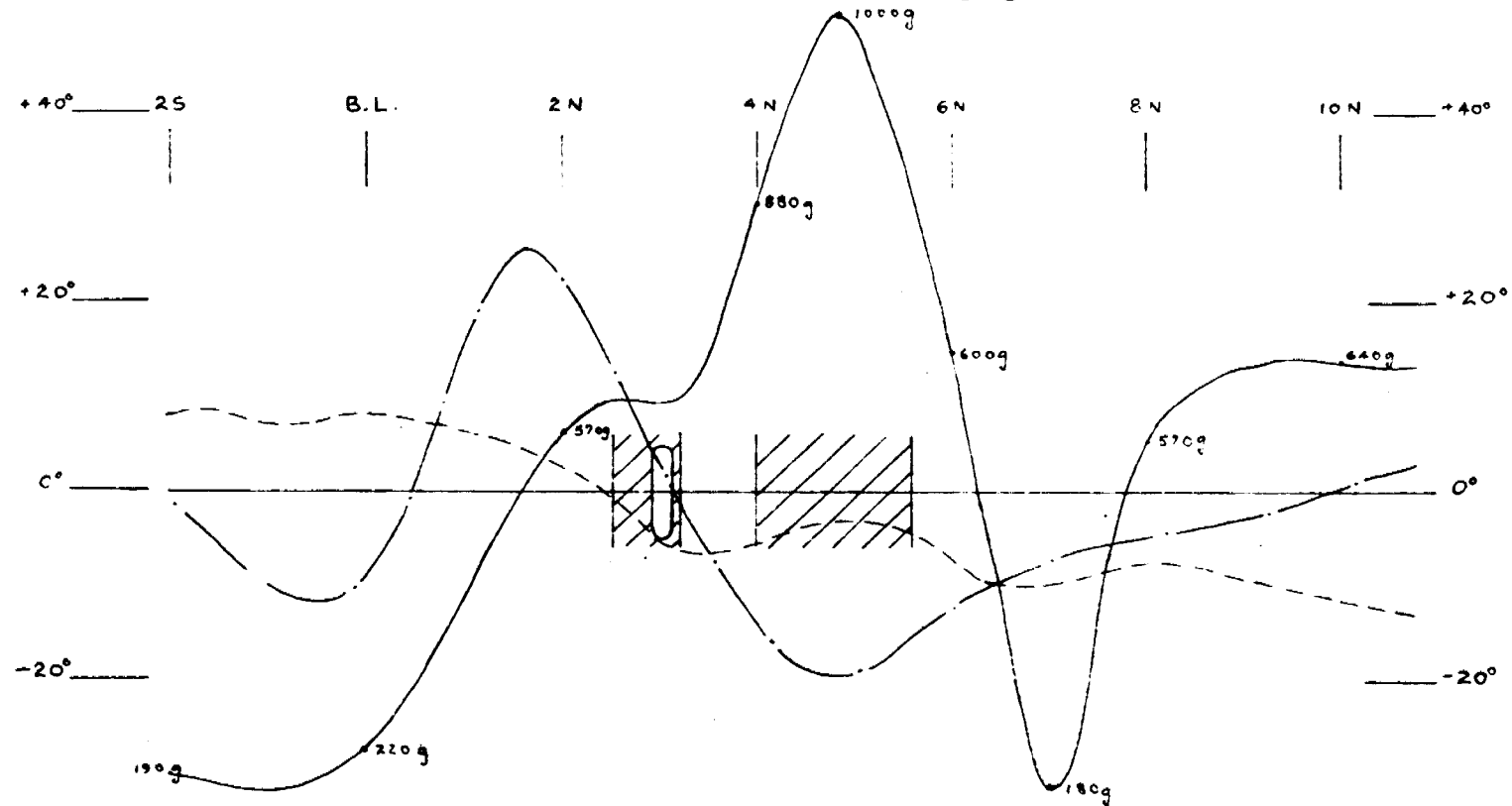
SIGNED J. R. Boissoneault
 PROVINCE OF ONTARIO

VANTAGE MINING CO. INC.

ZAVITZ TWP, ONTARIO

DRILLING PROGRAM

SECTION 00



SCALE 1 IN = 200 FT.

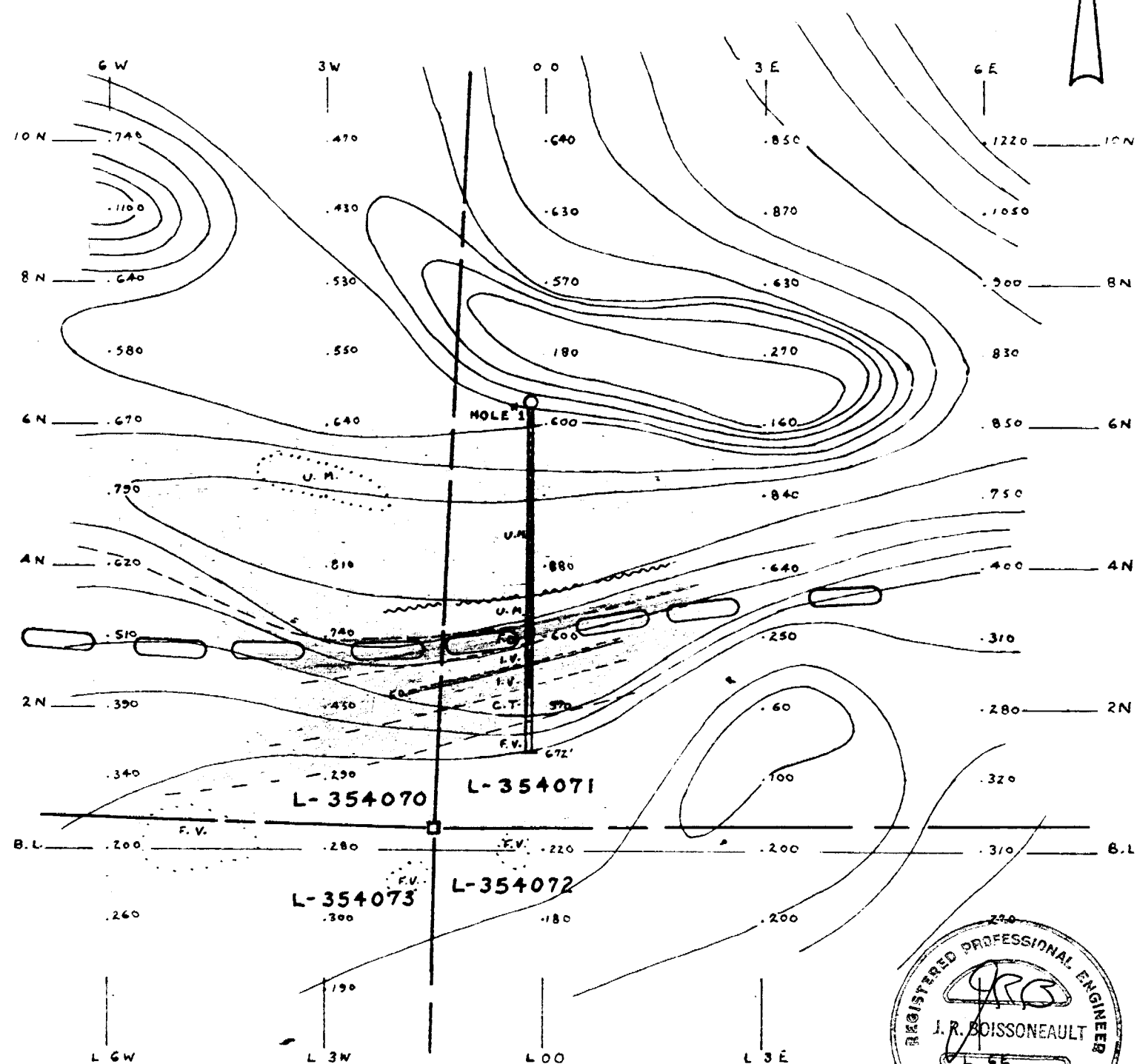
LEGEND

- MAGNETICS —————
- E-M, IN PHASE - - - - -
- QUADRATURE - - - - -
- MAGNETIC ANOMALY
- E-M ANOMALY
- DRILL HOLE

GEOLOGICAL

- UM ULTRAMAFIC INTRUSIVE
- IV VOLCANIC-ANDESITE, TUFF OR BRECCIA
- FD FELSIC DIKES (APLITE)
- C.T. CARBONACEOUS TUFF
- F.V. RHYOLITE, RHYOLITE BRECCIA
- FAULT
- CONTACT - - - - -

PLAN



BY: J. BOISSONEAULT MAY, 1975

PLATE 1

VANTAGE MINING CO. INC.

ZAVITZ TWP., ONTARIO

GEOLOGY AND GENERAL PLAN

SCALE: 1 in. = 400 ft.

LEGEND

	MAFIC VOLCANIC
	INT. VOLCANIC
	FELSIC INTRUSIVE DIKE
	ULTRAMAFIC INTRUSIVE

	GEOLOGICAL CONTACT
	CREEK
	PICKET LINE
	CLAIM LINE
	SWAMP
	MAGNETIC HIGH
	CONDUCTIVE ZONE
	ALTERATION ZONE
	OUTCROP AREA

