



42A04NE0102 10 HILLARY

010

Diamond Drilling

Township of HILLARY

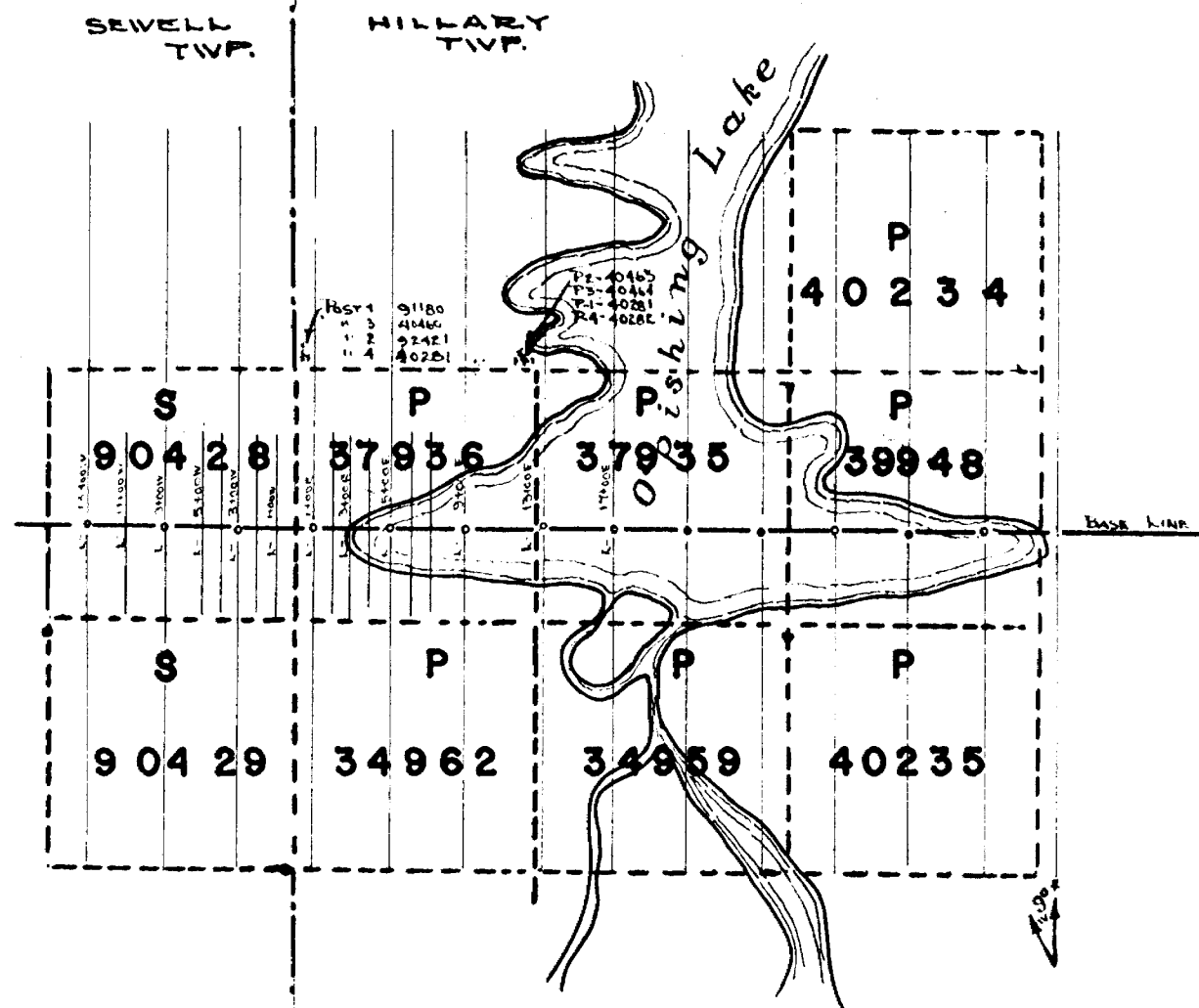
Report No: 10

Work performed by: CONSOLIDATED TUNGSTEN MINING CORPORATION

Claim No	Hole No	Footage	Date	Note
P 37936	1	299'	Jan/56	
	2	330'	Feb/56	
	3	244'	May/56	
	5	567'	Apr/56	
P 40281 (37936)	7	1343'	Apr/56	

Notes:

*W. Ritchie*  
 37935  
*Felix P. [unclear]*  
~~37935~~



~ WALLINGFORD OPTION ~  
 CON. TUNGSTEN MINING CORP.  
 HILLARY & SEWELL TWP.  
 SCALE ONE INCH = 1000 FEET.

DWG NO 421

DIAMOND DRILL SUMMARY

CONSOLIDATED TUNGSTEN MINING CORPORATION OF CANADA LIMITED

HILLARY TOWNSHIP

<u>Hole No.</u>	<u>Location</u>	<u>Dip</u>	<u>Depth</u>	<u>Claim No.</u>
1	/E318, N174	49°	299 EXT	P-37936
2	E238, N165	53°	330 AXT	P-37936
3	E208, N51	49°	244 AXT	P-37936
5	E530, N100	45°	<u>567 AXT</u>	P-37936

Total 299' EXT, 1141' AXT = 1440 feet

*A. Kitcher*



Co-ordinates of Collar: E238' N165' COMPANY F. M. Wallingford Consolidated Tungsten Mining Corporation of Canada Ltd.  
 Dip 53° Strike S12°W PROPERTY Hillary Township Logged by: [Signature] Claim No. P-37936 D.D.R.# 2  
 Date: Feb. 7/56

Sample Number	Mr/Hr	Dist. from ft.	Formation	Width ft.	Assay Value \$ Copper	%	%	Oz.	Oz.	Remarks
		0								
		36	Overburden	36						Casing.
		210	Andesite	174						Numerous calcite and quartz stringers. Minor disseminated pyrite. Stringers 40° to 50° to core axis.
16		215	Andesite	5	Nil					) From 215 to 315 Mineralization of Chalcopyrite and pyrite more prevalent than in top section. Calcite and quartz stringers with sulphides.
17		220	"	5	Nil					
18		225	"	5	0.02%					
19		230	"	5	Nil					
20		235	"	5	0.01					
21		240	"	5	0.02%					
22		245	"	5	Nil					
23		250	"	5	Nil					
24		255	"	5	Nil					
25		260	"	5	0.02%					
26		265	"	5	Nil					
27		270	"	5	Nil					
28		275	"	5	0.12%					
29		280	"	5	0.03%					
30		285	"	5	0.02%					
31		290	"	5	Nil					
32		295	"	5	Nil					



## Consolidated Tungsten Mining Corp. of Canada Limited

Co-ordinates of Collar: E208/  
N51'

COMPANY F. M. Wallingford Option Logged by:

Claim No. P-37936

D.D.H# 3

Dip 49°

Strike S11°E

PROPERTY Hillary Township

Signature

Date: Jan. 27 &amp; Feb. 11/56

Sample Number	Mr/ Hr	Dist. from ft.	Formation	Width ft.	Assay Value \$ Copper	%	%	Oz.	Oz.	Remarks
		0								
		7	Overburden	7						Casing.
		27	Andesite	20						Carbonate stringers at 45° to core axis. Chalcopyrite at 22.5 feet, in carbonate stringer 50% sulphide. At 23 feet, narrow carbonate stringer with minor chalcopyrite
Darby		28	Vein	1	1.09%	(Sampled by Len Darby)				Chalcopyrite and pyrite disseminated in carbonate vein.
		169	Andesite	141						With narrow calcite and quartz stringers. Very minor chalcopyrite.
		169	Shear	0						At 169 ft. shear in andesite. 45° to core axis.
		175	Andesite	6						Minor disseminated chalcopyrite.
		192	Andesite	17						Minor pyrite
		194	Andesite	2						No mineralization
		195	Shear	1						Shear plane 70° to core axis
		199	Andesite	4						80% quartz
		201	Sheared Andesite	2						70° to core axis
		205.5	Andesite	4.5						
		205.8	Limonite	0.3						3 inch width of limonite
		209	Andesite	3.2						Numerous stringers of quartz 65° to core axis
		211	Broken Andesite	2						
		214	Lost core	3						
		217	Chiefly rusty quartz	3						





Co-ordinates of Collar: **E530**  
**N100**

Consolidated Tungsten Mining Corporation of Canada Ltd.

COMPANY **F. M. Wallingford Option** Logged by:

Claim No.

D.D.H# **5**

Dip **45°**

Strike **N12°W**

PROPERTY **Hillary Township**

*[Signature]*  
Signature

**P-37936**

Date: **April 24/56**

Sample Number	Mr/Hr	Dist. from ft.	Formation	Width ft.	Assay Value \$	% Cu	%	Oz.	Oz.	Remarks
		265.5	<del>Anes</del> Andesite	<del>5</del> 4.5						Altered as above. Magnetite stringer.
		271	Andesite	5.5						
		273	Andesite	2						Quartz vein with minor magnetite.
		274.5	Broken Andesite	1.5						
		275	Andesite	0.5						Altered as above.
		276	Andesite	1						Quartz vein.
		280.5	Andesite	3.5		<del>Nil</del>				<del>Quartz-and-pyrite.</del> Altered as above.
TU 305		283	Vein			Nil				Quartz and pyrite.
		296	Andesite	13						Altered as above. Thread of magnetite.
		298	Andesite	2						Altered as above.
		299.5	Andesite	1.5						Altered as above. Thread of chalcopyrite.
		324	Andesite	<del>2</del> 5.5						Altered. No shearing.
		325.5	Andesite	1.5						Chalcopyrite - disseminated.
TU 306		328	Andesite	2.5		1.08				Chalcopyrite and quartz.
		537	Andesite	209						Altered with white grains
		539	Andesite	2						Quartz stringers about every 2 feet, at 60° to core axis. Traces of chalcopyrite, pyrrhotite and hematite stain.
		567	Andesite	32						As above.
		567	END OF HOLE							

Consolidated Tungsten Mining Corporation of Canada

Co-ordinates of Collar: E530  
N100

COMPANY F. M. Wallingford Option

Logged by:

Claim No.

D.D.H# 5 *Page 2*

Dip 45°

Strike N12°W

PROPERTY Hillary Township

*[Signature]*  
Signature

P-37936

Date: April 24/56

Sample Number	Mr/Hr	Dist. from ft.	Formation	Width ft.	Assay Value \$	%	%	Oz.	Oz.	Remarks
		0								
		22	Overburden							Casing
		26	Andesite	4						Minor quartz stringers 30° to core axis.
		26.3	Andesite	0.3						Disseminated chalcopyrite. Estimate 0.5% Cu.
		30	Andesite	3.7						Minor chalcopyrite.
		97.7	Andesite	67.7						Very little alteration.
		144	Andesite	46.3						Finely disseminated pyrite.
		164	Andesite	20						Metamorphosed with white secondary grains.
		164.1	Andesite	0.1						Stringer. Cu about 2%
		168	Andesite	3.9						Metamorphosed with secondary white grains.
		168.1	Andesite	0.1						Chalcopyrite 3% Cu. Vein stringer at 30° to core axis. Shear surfaces.
		172	Andesite	3.9						
		176	Andesite	4						Strong shearing.
		179	Andesite	3						Grains of hematite and micaceous mineral. Shear Striae. Fault or shear plane is 25° to core axis and parallel to quartz veinlet. Striae on fault or shear plane is 60° to core axis. The shearing is subsequent to carbonate veinlet as calcite is polished and grooved. Minor pyrite.
		181	Andesite	2						Broken core
		210	Andesite	29						Green, granular, altered.
		211	Andesite	1						Disseminated pyrite.

Co-ordinates of Collar:

E100  
N965

COMPANY

Consolidated Tungsten Mining Corporation  
of Canada Limited

Logged by:

Claim No.

D.D.H# 7

Dip 62°

Strike S37°E

PROPERTY

Hillary Twp. Optioned claims C.T.Ritchie

P-40281 & P37936

Date: April 9 - May 11/56

*Claims have been transferred to Consolidated Tungsten*

*File P-40281*

Sample Number	Mr/Hr	Dist. from ft.	Formation	Width ft.	Assay Value \$	%	%	Oz.	Oz.	Remarks
		0 - 7	Overburden	7						Extends into claim No. P-37936 Casing.
		7 - 66	Andesite	59						Porphyritic with flow laminae or shearing at 30° to core axis.
		66 - 92	Andesite	26						No phenocrysts. No flow structure. Quartz threads carrying traces of chalcopyrite. At 92' - contact between light green andesite above and darker grey andesite below.
		92-108	Andesite	16						Dark andesite.
		108-240	"	132						Light green andesite. Numerous quartz threads, some carrying chalcopyrite from 108 to 225. Andesite gradually darkens down hole, noticeable at 230 feet.
		230-240	Basalt	10						
		240-325	Andesite	85						Less dark. Numerous threads and traces of sulphides including chalcopyrite and pyrrhotite. Feldspar phenocrysts.
		325-398	Andesite	73						
		398-435	Andesite-diorite	37						Gradational change
		435-436	Dark rhyolite	1						
		436-456	Diorite	20						
		456-592	Andesite	136						Quartz threads 45° to axis.
		592-647	Andesite	55						Feldspar phenocrysts.
		647-659	Coarser andesite	12						
		659-663	Basic rock	4						Black. Mostly biotite. Contact 45°. May be dyke or altered flow.
		663-700	Andesite	37						
		700-719	Andesite	19						Porphyritic. Quartz threads 45°.
		719-1343	Andesite	624						No phenocrysts. Core becomes more and more

*Note: Hole started on Claim P40281 and reprimed on this claim for 750 feet or more.*

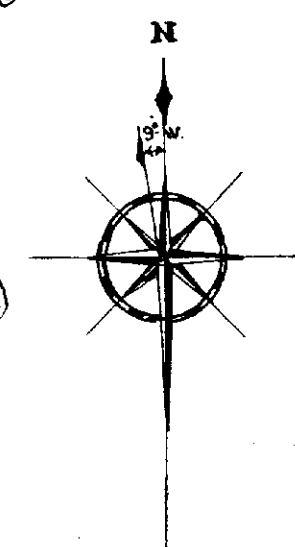
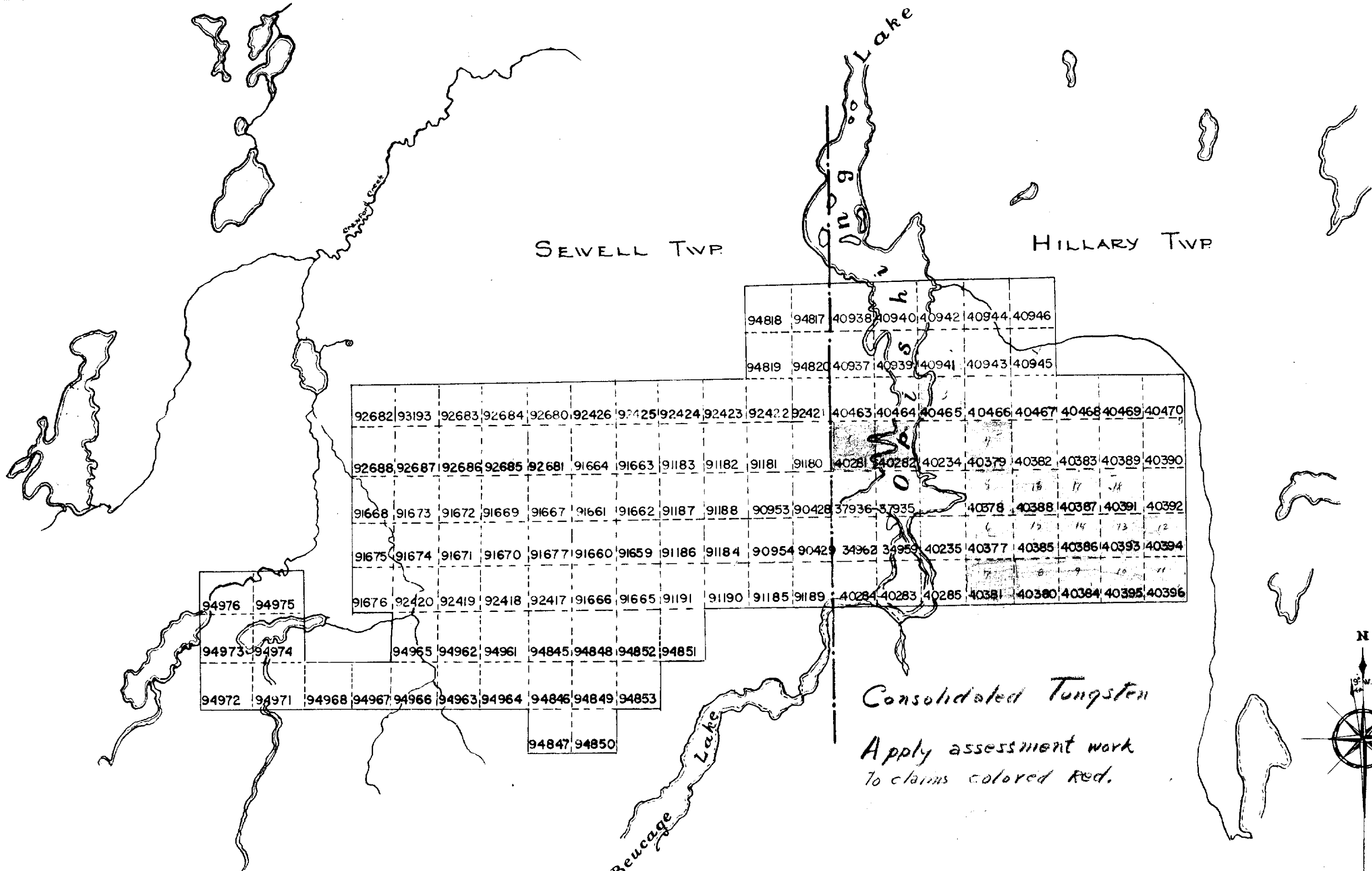
*Signatures*

Co-ordinates of Collar: E100 N965  
Dip 62° Strike S37°E

COMPANY Consolidated Tungsten Mining Corporation of Canada Limited  
PROPERTY Hillary Twp. Optioned claims C.T. Ritchie  
Logged by: \_\_\_\_\_  
Signature \_\_\_\_\_

Claim No. P-40281 & P-37936  
D.D.H# 7  
Date: April 11<sup>9</sup> - May 11/56

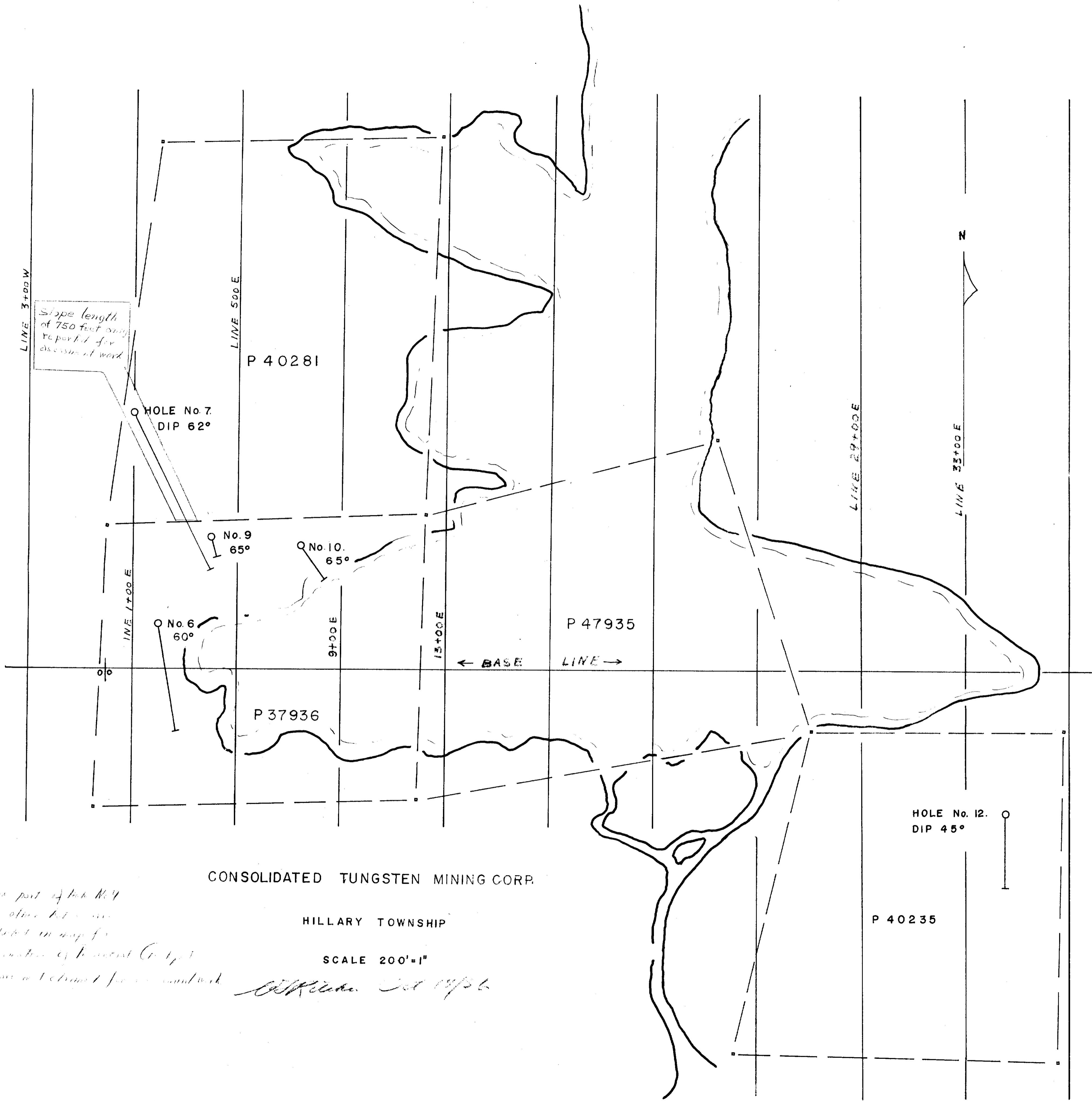
Sample Number	Mr/Hr	Dist. from ft.	Formation	Width ft.	Assay Value \$	%	%	Oz.	Oz.	Remarks
			719-1343 Continued							silicified and better mineralized with minor chalcopyrite. The massive or brecciated quartz zone of Hole #1 and #6 was not encountered when the drill stopped.
		1343	END OF HOLE							
<p>NOTE: Co-ordinates refer to grid picket line grid: thus: 100 feet east and 965 feet north of zero zero station.</p>										
<p><i>C.T. Ritchie</i></p>										
<p>Note for Mining Recorder: This hole started on Claim No P 40281 and remained on Claim No 40281 for a slope length of at least 750 feet.</p>										
<p>Only 750 feet is submitted for assessment work.</p>										



Dwg. No 416



*[Handwritten signature]*



CONSOLIDATED TUNGSTEN MINING CORP.

HILLARY TOWNSHIP

SCALE 200' = 1"

*Bottom part of hole No. 7  
is of a different formation  
indicated in map for  
information of interested parties  
but not a claim for assessment work*

*W.H. Clarke Oct 1936*



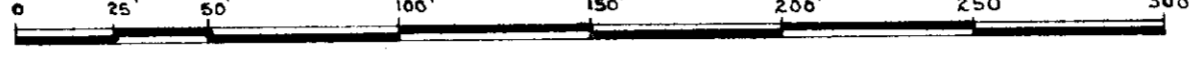
*C. Ritchie*

# WALLINGFORD OPTION PLAN OF DIAMOND DRILLING

Sewell and Hillary Twp.

TIMMINS ONT

SCALE 1" = 50 FT.



S 91780

*Original*

P 1781

*Plan*

TWP  
SEVELL

TWP  
HILLARY

S 90423

P 37936

SEVELL

HILLARY

LINE - 0+00

LINE - 1+00E

LINE - 2+00E

LINE - 3+00E

LINE - 4+00E

LINE - 5+00E

LINE - 6+00E

LINE - 7+00E

LINE - 8+00E

LINE - 9+00E

BASE LINE

DDH # 3

DDH # 6

DDH # 2

DDH # 1

DDH # 5

DDH # 7

O P I S H I N G L A K E

