



42A04NW0037 2.703 REEVES

010

REPORT ON GEOPHYSICAL SURVEYS
MAGNETIC & ELECTROMAGNETIC

REPORT ON GEOPHYSICAL SURVEYS
MAGNETIC & ELECTROMAGNETIC

CARD LAKE COPPER MINES LIMITED

GEOPHYSICAL SURVEYS

Sewell & Reeves Townships Property

TIMMINS AREA

O n t a r i o

SUMMARY OF RESULTS

Five anomalously magnetic areas , three of which have corresponding electromagnetic coincidence , were located that warrant follow up investigations. These anomalies are identified on the magnetometer survey plan as anomalies 'A' , 'B' , 'C' , 'D' , & 'E'.

The 'B' anomaly coincides with an EM conductor which is about 2000 feet in length. Two short diamond drill holes on one small portion of the anomaly encountered sulphide mineralization in a felsic tuff with some visible chalcopyrite.

Two short drill holes in the surface showing portion of the 'A' anomaly encountered sulphide mineralization in a felsic tuff horizon that yielded minor values in antimony.

The 'C' anomaly will require further magnetic and electromagnetic detailing but is suspected to be due to magnetite or sulphide mineralization.

Routine geophysical checking and prospecting of the 'D' and 'E' anomalies appears warranted in view of the presence of sulphide mineralization in two of the anomalies and its presumed presence in the 'C' anomaly.

INTRODUCTION

Geophysical surveying of the Card Lake Copper Mines Limited property in Reeves and Sewell townships was undertaken as an initial phase of an exploration programme to investigate the geophysical response of a stibnite-bearing fissure vein structure and any adjacent or associated structures.

The results of the geophysical programmes which included magnetic and electromagnetic surveying are shown on the attached plans.

Two short diamond drill holes probed portions of the 'A' and 'B' anomalies. The 'A' anomaly encompasses a partially exposed antimony showing, while the 'B' anomaly represents a long EM conductor encountered as part of the routine geophysical survey programme.

PROPERTY, LOCATION and ACCESS

The Card Lake Copper Mines Limited property straddles the common boundary between Sewell and Reeves townships near the south end of the townships, Porcupine Mining Division, Timmins Area, Ontario.

Of the 17 unpatented mining claims comprising the property, 8 are in Reeves township and 9 are in Sewell township. The claim locations are as shown on the index sketch on each of the geophysical survey plans.

Convenient access to the property is provided via a gravel bush road which connects the central portion of the claim group to highway 101 about 37 miles SW of Timmins,

Ontario.

Claims forming the Card Lake Copper Mines Limited property described above are recorded in the names of:

John J. Johnson
Box 233
Timmins , Ontario

A. N. Wright
RR No 1
Gilford , Ontario

GEOPHYSICAL SURVEY STATISTICS

Descriptive and statistical aspects of the electro-magnetic and magnetic surveying are documented in the various headings below.

Survey Grid

The entire 17 claims have been covered by a grid line system utilizing a portion of the recently surveyed common boundary between Reeves & Sewell townships as a N-S base line. Section lines run E-W from the base line at intervals of 400 feet except for the anomaly 'A' and 'B' areas where 200 foot interval grid lines have been cut.

The 0+00 point is situated on the base line on the south boundary of the property. Grid lines are numbered in increasing order northerly from the 0+00 point and in increasing order west and east of the N-S base line.

Approximately 17.35 miles of grid lines were cut over the property.

Electromagnetic Survey

The electromagnetic survey was done with a McPhar

SS 15 vertical loop instrument. This instrument operates on a frequency of 1000 cps.

Field procedures involve setting up of transmitter stations conveniently at points on the grid from which a series of 100 interval stations in an E-W direction are read both north and south of the transmitter location. The receiver measures the positive or negative dip angle of a resultant secondary field if a conductor is present , otherwise zero readings are obtained. If a conductor is indicated , or a series of higher than normal positive or negative readings are obtained , the transmitter is moved to the location and the indicated conductivity is traced out.

Transmitter stations are shown as numbered triangles coloured yellow on the electromagnetic survey plan in the order that they were established during the survey. Grid lines read are identified by numbers which are identical to the transmitter location from which the readings are taken.

Readings have been taken at 100 foot intervals along the grid lines . Dip angles recorded are plotted in profile form on the plan.

Thirteen transmitter locations were set up during the survey , all identified on the plan. A total of 881 individual readings were taken during the course of the survey.

Grid lines were cut between 20 August and 2 September 1971. The field portion of the electromagnetic survey was done between September 1 - 27 , 1971.

Mr. John J. Johnson , Box 233 , Timmins , Ontario ,

supervised all the field work and performed the geophysical surveying with assistants.

Magnetic Survey

Magnetic surveying was done with a McPhar Fluxgate M 700 magnetometer with a sensitivity of 20 gammas per scale division. Readings were taken at 50 foot intervals along the grid lines. These readings are plotted on the plan corrected for daily and diurnal variations. Readings so documented measure the vertical component of the earth's magnetic field in non absolute units.

A main base control station was set up at 36+00N , 2+00 E. Additional control stations were set up along the base line.

The magnetic survey involved the reading of 1725 individual stations.

Survey Contractor

The geophysical surveys were performed under the supervision of , and by John J. Johnson of Timmins , Ontario during the period 20 August to 9 October 1971.

Mr. Johnson was formerly associated with Tri - J Mineral Surveys Limited and has had extensive experience in mineral exploration and geophysical surveying in various parts of Canada.

The geophysical survey programme was undertaken as part of the recommendations made in a qualifying report dated 4 August 1971 by me for Card Lake Copper Mines Limited.

Diamond Drilling

A modest drill test of portions of the 'A' and 'B' anomalies was undertaken between September 24 and October 22, 1971.

Two short holes were drilled on the 'A' anomaly (antimony showing) comprising 410 feet , and 2 on the 'B' anomaly (long conductor) comprising 536 feet.

A total of 946 feet of diamond drilling was done on the property.

GENERAL GEOLOGY

Reference:

Report on Card Lake Copper Mines Limited , Sewell and Reeves Townships Property , Timmins Area , Ontario, by Frank P. Tagliamonte , 4 August 1971.

The latest geological data available on the property , also covered in the above report , is contained on Ontario Department of Mines preliminary geological maps No's P 418 and P 464 , compiled by V. G. Milne and assistants during 1966 and 1967.

These maps reveal that the property is underlaid by a series of mafic volcanic rocks. A generally N - S striking diabase dyke traverses the Sewell portion of the claim group.

Diamond drill hole data reveals that there are mafic and felsic tuff horizons containing massive seams and disseminated pyrrhotite , pyrite , and minor associated chalcopyrite as well as arsenopyrite , and stibnite within the mafic volcanic rocks. Unidentified minerals are also present in the

tuffs. An analysis of the yet to be identified minerals is being made by the G. S. C. in Ottawa.

A stibnite showing in the NE portion of the claim group prompted Card Lake Copper Mines Limited to acquire the property and investigate its significance.

The current geophysical surveys fulfill the initial phase of the exploration programme , together with the limited drilling which has been performed.

HISTORY

There are no official records of previous work on the property.

Some old , shallow hand trenches reported on the property indicate early gold prospecting activities.

The stibnite occurrence was noted by O. D. M. geologist V. G. Milne in 1967.

Card Lake Copper Mines Limited opened up the showing with some pop blasting , and surface stripping.

The showing is described in my August 1971 qualifying report.

INTERPRETATION OF GEOPHYSICAL RESULTS

The magnetic survey defines two prominent N - NW trending linear magnetic anomalies which are a reflection of diabase dykes.

Five other magnetic anomalous areas , three of which have associated electromagnetic responses , were de-

tected. These are labelled 'A' , 'B' , 'C' , 'D' , & 'E' and will be treated individually.

Anomaly 'A'

This anomaly is situated on the antimony showing and is designated as an anomaly primarily because of the showing. An indentation nevertheless occurs on the otherwise regular 500 gamma contour line on the east flank of the diabase dyke at this particular point. The indentation partly surrounds a magnetic depression.

There is no prominent coincident EM associated with this anomaly but I suspect that a set-up over the showing with the transmitter should produce some response.

Precise magnetic effects are likely masked by the diabase which is itself magnetic.

Anomaly 'B'

A random series of magnetic depressions with occasional associated magnetic highs suggests a series of dipole effects in an area about 800 feet by 600 feet on the east side of a second diabase dyke which trends about N-S.

A convex eastward , arcuate EM conductor axis traverses the central portion of the magnetic dipole cluster. This conductor is at least 2000 feet long and extends beyond the magnetic anomalies.

Anomaly 'C'

This anomaly contains a series of dipoles along one line and another isolated high closure on an adjacent line.

There is a weak EM association with the dipole portion of the anomaly.

This anomaly is characteristic of magnetite or sulphides and the immediate area should be prospected for evidence of mineralization. If no outcrops are present, local detail magnetic and electromagnetic surveying should be done.

A drill hole probe may ultimately be required to test this particular anomaly.

Anomaly 'D'

This magnetic anomaly may represent a bulge in the diabase but should nevertheless be prospected and otherwise detailed with EM by a set-up over the magnetic high.

Magnetic iron formation or sulphide mineralization may be the cause of the magnetic anomaly.

Anomaly 'E'

This anomaly may also be a peculiarity in the diabase dyke itself but the broad low and adjacent high in dipole configuration suggests the possibility of sulphide concentrations.

Prospecting and a local EM check is suggested.

CONCLUSIONS AND RECOMMENDATIONS

1) Drill hole information confirms that anomalies 'A' and 'B' are due to sulphide mineralization in tuffaceous rocks. The presence of some chalcopyrite mineralization and a very minor indication of zinc in the 'B' anomaly sul-

phide zone , as well as the presence of stibnite mineralization in the 'A' anomaly imply that follow up exploration investigations should be made.

2) The 'C' anomaly should be prospected and if no explanation for the anomaly is obtained , fill-in magnetic surveying and detail EM work will have to be done.

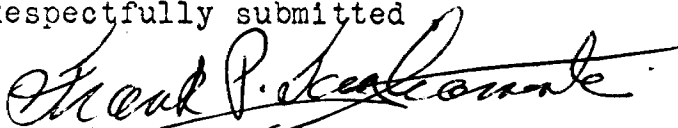
An ultimate drill hole probe to test the geophysical anomalies expected will have to be considered.

3) The 'D' anomaly may be due to a bulge in the diabase , but the area should be prosected or checked geophysically to test for the possibilities of sulphide mineralization.

4) The 'E' anomaly is not considered very important but should nevertheless be checked by prospecting and EM.

All unexplained anomalies should be evaluated when delimited and ultimately drill tested if the evaluations so suggest.

Respectfully submitted



Frank P. Tagliamonte , P. Eng.



N o r a n d a , Q u e b e c
30 November 1971

REG'D
GEOLOGICAL ENGINEERING SERVICES
134 19TH STREET
NORANDA, QUEBEC

C E R T I F I C A T I O N

I , Frank P. Tagliamonte , of 134 - 19th Street , of the City of Noranda , in the province of Quebec certify as follows concerning my geophysical surveys report on the Sewell and Reeves townships property of Card Lake Copper Mines Limited dated November 1 9 7 1 .

1) I am a member of the Corporation of Engineers of Quebec and the Association of Professional Engineers of Ontario.

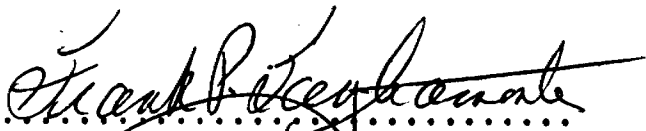
2) I am a graduate of the South Dakota School of Mines & Technology , Rapid City , South Dakota , U.S.A. , with a BSc degree in Geological Engineering obtained in 1957.

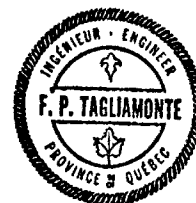
3) I have been practising my profession in Canada and occasionally in the United States for the past 14 years.

4) I have no direct or indirect interest in the property or leases of Card Lake Copper Mines Limited nor do I expect to receive any.

5) The accompanying report is based on an interpretation of geophysical survey data obtained by John J. Johnson. I have also drawn on my previous associations with exploration work on the property which involved a property examination and the logging of recently completed diamond drill holes.

Dated this 30th day of
November , 1 9 7 1
N O R A N D A , Q u e b e c


.....
Frank P. Tagliamonte, P.Eng.





42A04NW0037 2.703 REEVES

020

PROSPECTUS CARD LAKE COPPER

①
CARD LAKE COPPERMINES LIMITED
(Incorporated under the laws of the Province of Ontario)

2.703
AWL

Best Efforts Offering of
375,000 COMMON SHARES
(without par value)

2.703

Price: 15 cents per share

	<u>Price to Public</u>	<u>Agent's Commission</u>	<u>Proceeds to Company (1)</u>
Per Share	\$ 0.15	\$ 0.015	\$ 0.135
Total	\$56,250.00	\$5,625.00	\$50,625.00

(1) The shares hereby offered are offered by W. D. Latimer Co. Limited as agent for the Company. There is no assurance that all or any of the shares will be sold. If subscriptions for a minimum of 270,000 shares to net the Company \$40,500 (less commissions) are not received and paid for within 90 days from the date of the receipt of the Ontario Securities Commission for the final prospectus, all moneys received for such subscriptions shall be returned in full to the subscribers. Guaranty Trust Company of Canada has been appointed Trustee of all subscriptions received pending receipt of the said \$40,500. Reference is made to the caption "Use of Proceeds" in the prospectus.

The over-the-counter market for the shares of the Corporation from May 1st, 1972 to June 13th, 1972 was:

Bid - 13¢ per share
Asked - 18¢ per share

THE SHARES OFFERED HEREBY ARE SPECULATIVE

We, as agent, offer these 375,000 common shares in the capital of Card Lake Copper Mines Limited if, as and when issued and accepted by us, subject to prior sale and subject to approval of all legal matters on our behalf and on behalf of the Company by Messrs. Manley, Grant & Camisso, Toronto, Ontario.

Subscriptions will be received subject to rejection or allotment in whole or in part and the right is reserved to close the subscription books without notice.

W. D. LATIMER CO. LIMITED
199 Bay Street, Toronto, Ontario
363-5631

NO SECURITIES COMMISSION OR SIMILAR AUTHORITY IN CANADA HAS IN ANY WAY PASSED UPON THE MERITS OF THE SECURITIES OFFERED HEREUNDER AND ANY REPRESENTATION TO THE CONTRARY IS AN OFFENCE. THESE SECURITIES ARE BEING OFFERED FOR SALE ONLY IN THE PROVINCE OF ONTARIO.

The date of this Prospectus is July 21st, 1972.



TABLE OF

Page No.

The Company	3
History and Business	3
Properties	4-8
Capital Structure	9
Capitalization	9
Dividends	10
Auditors	10
Stock Registrar and Transfer Agent	10
Escrowed Shares	10
Best Efforts Offering	11-13
Use of Proceeds	13
Purchaser's Statutory Right of Withdrawal and Rescission	13-15
Principal Holders of Shares	15-16
Promoters	16
Management	17
Remuneration of Directors and Officers	18
Prior Sales	18
Interest of Management in Material Contracts	19
Material Contracts	19-20
Financial Statements	21-30
Other Material Facts	31

THE COMPANY

Card Lake Copper Mines Limited (the "Company") was incorporated under the laws of the Province of Ontario by letters patent dated the 4th day of March, 1969. By Articles of Amendment dated February 19, 1971, the shares of the Company, both issued and unissued were changed from a par value of \$1.00 each to shares without par value. The Head Office is located at 9th Floor, 366 Bay Street, in the City of Toronto, in the Province of Ontario.

HISTORY AND BUSINESS

The Company was incorporated as a mining company for the purpose of acquiring, exploring, development and operating mines, mineral lands and deposits. The first venture of the Company was the acquisition of the Card Lake claims referred to below under the caption "PROPERTIES".

PROPERTIES

1. CARD LAKE CLAIMS

Pursuant to an agreement dated March 12, 1969, the Company acquired from four directors of the Company, namely, Arthur N. Wright, R.R. No. 1 Gilford, Ontario; David Weddel, R.R. No. 1. Queensville, Ontario; John Johnson, Box 820, South Porcupine, Ontario; and Thomas Bell, 672 Melrose Blvd., Timmins, Ontario (the "Vendors") an undivided 100% interest in 98 contiguous unpatented mining claims situated in the Townships of Cannon Lake, McVicar, Saddle and Cannon Creek, in the Red Lake Mining Division in the Province of Ontario, described as follows:

KRL 61710 to KRL 61711

KRL 61730 to KRL 61747 inclusive

KRL 62219 to KRL 62296 inclusive

for and in consideration of \$75,000, which was fully satisfied by the Company allotting and issuing to the Vendors 750,000 fully paid and non-assessable shares in the capital of the Company, 675,000 of which shares were deposited in escrow with the Guaranty Trust Company of Canada (see caption "ESCROWED SHARES"). These claims are recorded in the name of the Company which is the holder of a mining licence issued by the Department of Mines for the Province of Ontario. The Vendors acquired the claims by staking same, and at the time the claims were acquired by the Company the Vendors had spent a total of \$5,880 on staking and assessment work. The 750,000 Vendors' shares were apportioned amongst the Vendors as follows: Arthur N. Wright 33-1/3%; David Weddel 33-1/3%; John J. Johnson 16-1/3%; and Thomas Bell 17%.

During the period from March 1969 to June 1970 the Company carried out geophysical surveys consisting of a deep penetration vertical-loop electromagnetic survey and a magnetometer survey over 55 of the Card Lake claims. Three diamond drill holes were drilled to test the cause and economic significance, if any, of one of the more acceptable strong magnetic anomalies. All three drill holes intersected a "typical" iron formation consisting of alternating bands of magnetite and chert. The Company spent a total of \$24,823 on this work programme during this period.

The total expenditure by the Company on these claims amounted to \$25,080.00 as of March 31st, 1972.

Because of the disappointing results of the above work done on these claims, the Company abandoned these claims and has written off the \$75,000 necessary to acquire the claims and the \$25,080 expended on them.

2. SADDLE LAKE CLAIMS

By agreement dated the * day of September, 1969, Charles Lorne Boland (a director), Emil Chorzepa of Kirkland Lake, Roy Reaman of the Town of Newmarket and Edward Alexander Boland, of the Village of Killaloe, all of the Province of Ontario, sold to the Company an undivided 50% interest in mining claim KRL 60755 situated in the Stoughton Lake Area, District of Kenora, for and in consideration of the Company doing 1000 feet of exploratory diamond drilling on the said claim. The remaining undivided 50% interest is owned by the Vendors.

The Company drilled three holes in the vicinity of the showing and intersected wide zones of massive sulphides containing minor amounts of copper-sulphur-zinc. Two of the holes were stopped while still in the sulphide zones because the sulphides did not carry values. The Company spent \$11,636 in doing the above work. It is not intended by the Company to do any further work on these claims at the present time.

3. BOYES LAKE AREA

By agreement dated February 13th, 1970, the Company was granted an option on 34 unpatented mining claims in the Shonia Lake Area, Red Lake Mining Division, Ontario, for a cash consideration of \$8,170. The Company could have acquired the above claims for a further cash payment of \$8,000 on or before February 13th, 1971, but the option was not exercised and has now expired. The total amount expended for drilling and exploration on the property up to March 31st, 1972 was \$16,144. The \$16,144 has now been written off as well as the \$8,170, the cost of acquiring the option.

4. WETTLAUFER LAKE CLAIMS

By agreement dated the 15th day of November, 1969, Charles Boland of the Town of Kirkland Lake (a director of the Company) granted to the Company and Bochawna Copper Mines Limited an option to purchase 27 unpatented mining claims situated in the Wettlaufer Lake area of the Province of Ontario, being claims PA 223389 to PA 223396, inclusive, in the Patricia Mining Division, KRL 223397 to KRL 223400, inclusive, KRL 201937 to KRL 201948, inclusive, KRL 213063, KRL 213064 and KRL 224329, in the Red Lake Mining Division, in the following proportions:

the Company	- an undivided 30% interest.
Bochawna Copper Mines Limited	- an undivided 70% interest

In order to keep the option in good standing, the Optionees were obliged to pay the Optionor \$1,500 on the exercise of the option, \$3,500 on or before the expiration of six months from the date of the agreement, \$5,000 on or before the expiration of one year and \$5,000 on or before the expiration of two years. During the time the option is outstanding, the Optionees are obligated to perform and record all assessment work necessary to keep the claims in good standing for at least 60 days after the date of the expiration of the option.

The Optionees have done the following work on these claims:

Three short holes were drilled in the vicinity of and to test the sulphide showing intersected generally low values of copper-nickel with a trace of silver; copper-bearing sulphide mineralization occurred throughout the drill holes and there were local copper concentrations. Electromagnetic and magnetometer surveys were completed over the entire 27-claim group.

The Optionees spent a total of \$13,253 in carrying out the above work, of which \$3,976 was the Company's share.

By an agreement dated the 30th day of July, 1970, the Company agreed to defray the cost of the first \$10,000 spent on the above programme in addition to paying 50% of the balance of the cost of the said programme, in consideration of Bochawna Copper Mines Limited transferring to it an undivided 20% interest in the said option to purchase so that the total interest of the Company in the said option will be an undivided 50% interest and Bochawna Copper Mines Limited will retain an undivided 50% interest. In order that the work be proceeded with, Messrs. Wright and Weddel, two of the directors, advanced the moneys required to do the work. On account of the purchase price for the property, the Company has paid 30% of the first three option payments, as well as expending the \$10,000 on the program as required by the above agreement, for a total capital cost expenditure of \$13,000. The final option payment date has been extended to November 10th, 1972.

The Company expended \$4,338 during the period from July, 1970 to April, 1971, in a drilling and engineering program on these claims. The total expenditure by the Company on these claims, not including the \$10,000 spent to acquire the additional 20% interest, amounts to \$8,272 as at March 31st, 1972.

The Company does not intend to make its share of the final option payments on these claims.

5. STURGEON LAKE CLAIMS

In September, 1969, the Company acquired by staking, on the Sturgeon Lake Area, 20 unpatented mining claims being Nos. PA 238448 to PA 238467, at a total cost of \$680.00. After preliminary examination of the claims, the Company decided not to do any work on same and the claims were dropped on their terminal date. The amount expended in examination of these claims was \$159.00. This amount has been written off as well as the \$680.00 expended for acquiring same.

6. REEVES SEWELL TOWNSHIPS

By Agreement dated the 15th day of July, 1971, the Company acquired from John J. Johnson and Arthur N. Wright, two Directors of the Company, an option to purchase 17 unpatented mining claims situated in the Porcupine Mining Division in the Townships of Reeves and Sewell in the Province of Ontario, being recorded as Nos. P278975 to P278980 inclusive, P278991 to P278996 inclusive, and P291950 to P291954 inclusive (hereinafter called the "Mining Claims").

To keep the option in good standing, the Optionee paid to the Vendors \$200.00 on the execution of the above Agreement, and a further \$2,000.00 must be paid on or before the expiration of one year, a further \$2,000.00 on or before the expiration of the second year and \$25,000.00 on or before the expiration of the fourth year. If default in any payment is made and the default continues for 15 days, the option automatically lapses.

In addition to the above, the Optionee must perform and record all required assessment work on the Mining Claims. The Optionee shall be at liberty to terminate the option at any time if sufficient assessment work has been performed and recorded to keep the Mining Claims in good standing for at least 45 days from the date of termination; while the option is outstanding, the Optionee has the exclusive right to enter on the Mining Claims and carry out thereon such operations as it deems advisable. The option payment due on July 15th, 1972 has been extended to August 31st, 1972. The Company intends to make this option payment by that date.

The Company is advised by the Optionors that they spent \$4,000.00 in acquiring the Mining Claims.

The claims are located about a half mile from the south boundaries of Reeves and Sewell Townships.

Highway 101 which connects Timmins and Foleyet traverses the Townships about one mile north of the claim group. The property is about 40 miles southwest of Timmins.

The Company has carried on an engineering and drilling program on these claims and as at March 31st, 1972, it has expended \$12,891.00.

The following is a summary of the report of Frank P. Tagliamonte, P.Eng. on the Mining Claims, dated the 30th day of November, 1971:

Five anomalously magnetic areas, three of which have corresponding electromagnetic coincidence, were located that warrant follow up investigations. These anomalies are identified on the magnetometer survey plan accompanying the report, as anomalies 'A', 'B', 'C', 'D' and 'E'.

The 'B' anomaly coincides with an EM conductor which is about 2000 feet in length. Two short diamond drill holes on one small portion of the anomaly encountered sulphide mineralization in a felsic tuff with some visible chalcopyrite.

Two short drill holes in the surface showing portion of the 'A' anomaly encountered sulphide mineralization in a felsic tuff horizon that yielded minor values in antimony.

The presence of some chalcopyrite mineralization and a very minor indication of zinc in the 'B' anomaly sulphide zone, as well as the presence of stibnite mineralization in the 'A' anomaly imply that follow up exploration investigations should be made.

The 'C' anomaly should be prospected and if no explanation for the anomaly is obtained, fill-in magnetic surveying and detail EM work will have to be done.

An ultimate drill hole probe to test the geophysical anomalies expected will have to be considered.

The 'D' anomaly may be due to a bulge in the diabase, but the area should be prospected or checked geophysically to test for the possibilities of sulphide mineralization.

The 'E' anomaly is not considered very important but should nevertheless be checked by prospecting and EM.

All unexplained anomalies should be evaluated when delimited and ultimately drill tested if the evaluations so suggest.

The exploration programme suggested in the recommendations involving work on the 'A', 'B', 'C', 'D', and 'E' anomalies would require the following estimated funds:

1) Fill-in line cutting	
3 miles @ \$150.00 / mile.....	\$ 450.00
2) Fill-in magnetic surveying	
2 days @ \$150.00 / day.....	\$ 300.00
3) Fill-in electromagnetic surveying	
3 days @ \$150.00 / day.....	\$ 450.00
4) Diamond drilling	
Anomaly 'A' - 3 holes @ 200' -	600'
Anomaly 'B' - 4 holes @ 300' -	1200'
Anomaly 'C' - 2 holes @ 200' -	400'
Anomaly 'D' - 2 holes @ 200' -	400'
Anomaly 'E' - 1 hole @ 200' -	200'
Contingency drilling	- 200'
TOTAL DRILLING.....	3000'
3000' @ \$6.00 / foot.....	\$18000.00
5) Sampling & Assaying.....	\$ 300.00
6) Engineering.....	\$ 2500.00
7) Contingencies.....	\$ 3000.00
	<hr/>
TOTAL ESTIMATED COSTS.....	\$25000.00
	<hr/> <hr/>

The full report of Frank P. Tagliamonte, P.Eng., 134 - 19th Street, Noranda, Quebec, dated the 30th day of November, 1971, has been filed and is available for inspection at the office of the Ontario Securities Commission, 555 Yonge Street, Toronto, Ontario.

CAPITAL STRUCTURE

The capital of the Company is composed of one class only, namely, common shares. All shares issued by the Company rank equally as to entitlement to dividends and voting power, each share carrying one vote. There are no indentures or agreements extant or proposed limiting the payment of dividends. At all meetings of shareholders of the Company two shareholders personally present constitute a quorum. On a show of hands every shareholder voting exercises one vote whereas on a poll, every shareholder voting exercises one vote for each share held by him. In either case the Chairman has a second or deciding vote in the event of a tie vote. There are no conversion, preemptive, liquidation or distribution rights or other special privileges or provisions whatsoever attaching to any of the shares in the capital of the Company. None of the presently issued and outstanding shares in the capital of the Company are subject to call, all having been issued as fully paid and non-assessable shares. None of the shares offered hereby will be subject to call or assessment of any kind.

CAPITALIZATION

<u>Designation of Security</u>	<u>Amount Authorized</u>	<u>Amount outstanding as at the date of the most recent balance sheet contained in the Prospectus</u>	<u>Amount outstanding as the date of this Prospectus</u>	<u>Amount outstanding if all securities being issued are sold</u>
Common Shares no par value	3,000,000 (\$3,000,000)	1,400,005 (\$188,680)	1,400,005 (\$188,680)	1,775,005 * (\$239,305)

* This figure reflects the issue from treasury of the 375,000 shares offered but there is no assurance that any or all of the 375,000 shares will be sold.

A P P E N D I X

FOLLOW-UP EXPLORATION COST ESTIMATES

The exploration programme suggested in the recommendations involving work on the 'A', 'B', 'C', 'D', and 'E' anomalies would require the following estimated funds:

- 1) Fill-in line cutting
3 miles @ \$150.00 / mile.....\$ 450.00
 - 2) Fill-in magnetic surveying
2 days @ \$150.00 / day.....\$ 300.00
 - 3) Fill-in electromagnetic surveying
3 days @ \$150.00 / day.....\$ 450.00
 - 4) Diamond drilling
 - Anomaly 'A' - 3 holes @ 200' - 600'
 - Anomaly 'B' - 4 holes @ 300' - 1200'
 - Anomaly 'C' - 2 holes @ 200' - 400'
 - Anomaly 'D' - 2 holes @ 200' - 400'
 - Anomaly 'E' - 1 hole @ 200' - 200'
 - Contingency drilling 200'
 - TOTAL DRILLING.....3000'
 - 3000' @ \$6.00 / foot.....\$18000.00
 - 5) Sampling & Assaying.....\$ 300.00
 - 6) Engineering.....\$ 2500.00
 - 7) Contingencies.....\$ 3000.00
- TOTAL ESTIMATED COSTS.....\$25000.00


Frank P. Tagliamonte, P. Eng.

Company of Canada to remit the amounts of their subscriptions in full to subscribers who avail themselves of their said statutory right.

There are no underwriting or option agreements extant and none are proposed to be given.

USE OF PROCEEDS

If all of the 375,000 shares offered by this prospectus are sold, the net proceeds to be received by the Company are estimated at approximately \$45,000 after deducting the expenses of this offering, estimated at approximately \$5,000 and brokerage commission of \$5,625. The Company proposes to use the moneys, as and when received from the sale of the shares hereby offered to pay the \$2,000.00 option payment on the Reeves Sewell Township claims due on July 15th, 1972 and extended to August 31st, 1972, and to defray the cost of this offering and the cost of carrying out the program recommended for its Reeves Sewell mining properties estimated at approximately \$25,000.00. The Balance of the proceeds will be used, as and when received to complete the work programs recommended by the Company's engineer, and to pay the ordinary operating expenses of the Company.

PURCHASER'S STATUTORY RIGHT OF WITHDRAWAL AND RESCISSION

A. Right of Withdrawal

An agreement of purchase and sale covering any of the

The following table sets forth the percentage of shares in the capital of the Company beneficially owned by all directors and senior officers of the Company.

<u>Designation of Class</u>	<u>Percentage of Class</u>
Common Shares, par value \$1.00 each	42.5%

The following summary shows the respective holdings of principal shareholders, directors and senior officers of the Company as a group and the holdings of the public before and after the proposed offering of shares as referred to on the facing page. Special notice should be taken of the percentage holdings of persons acquiring shares offered by this prospectus.

<u>Parties</u>	<u>% of Shares Before Offering</u>	<u>% of Shares After Offering</u>
Principal Shareholders, directors and senior officers	43%	38%
Public (including persons acquiring the shares offered hereby)	57%	62%

PROMOTERS

The following persons may be considered the promoters of the Company:

Arthur N. Wright, R.R. #1, Gilford, Ontario;

George Nesbitt, Gilford, Ontario;

Thomas Bell 672 Melrose Boulevard, Timmins, Ontario,

John J. Johnson, Box 820, South Porcupine, Ontario.

MANAGEMENT

The following are the particulars of present management of the Company, including their respective principal occupations during the past five years:

President and a Director - Arthur Newman Wright, R.R. #1, Gilford, Ontario; farmer; self-employed as farmer, market gardener, prospector and ex-underground shift boss.

Vice-President and a Director - John Julius Johnson, Box 820, South Porcupine, Ontario, President and a major shareholder of Tri-J Minerals Limited, South Porcupine, Ontario.

Director - Thomas Bell, 672 Melrose Boulevard, Timmins, Ontario; Dispatcher on The Ontario and Northland Railway;

Director - Charles Lorne Boland 80 Poplar Avenue, Kirkland Lake, Ontario; self-employed as a timber operator from 1958 to February, 1968; presently President and Managing director of Bochawna Copper Mines Limited. Prior to the period mentioned above, Mr. Boland worked underground for Wright-Hargreaves Mines Limited and was in charge of development work on the lower levels of the mine, he then worked for two years in the engineering office of the company and did field work for the company in checking new outside prospectus and over a period of forty years he has done considerable prospecting work.

Director - George Nesbitt, Gilford, Ontario; owner operator of Nesbitt's Marina, Gilford, Ontario.

Secretary-Treasurer - Kenneth Tupling, Box 10, 21 Holland Street West, Bradford, Ontario; President and majority shareholder of Tupling Insurance Agencies Limited, Bradford, Ontario.

G.H. WARD & PARTNERS

Chartered Accountants

SUITE 203, NEWMARKET PLAZA, NEWMARKET, ONTARIO
TELEPHONE: 416-895-2972 - 895-7811
P. O. BOX 729, 21 HOLLAND ST. W., BRADFORD, ONTARIO
TELEPHONE: 416-775-2033

A. A. CONLIN, C.A.
RONALD H. LEGGITT, C.A.
GEORGE L. ROBERTSON, C.A.
GEOFFREY H. WARD, F.C.A.

AUDITORS' REPORT

To the Directors,
Card Lake Copper Mines Limited.

We have examined the balance sheet of Card Lake Copper Mines Limited as at 31st March, 1972 and the statements of deficit, source and application of funds, deferred exploration and development costs and deferred administrative costs for the period from the inception of the company on 4th March, 1969 to 31st March, 1972. Our examination included a general review of the accounting procedures and such tests of accounting records and other supporting evidence as we considered necessary in the circumstances. We have relied on the reports of Broley and Broley, Chartered Accountants who were the auditors for the periods to 30th June, 1970 and who reported on these periods on 17th July, 1970, for a prospectus issued at that time.

In our opinion, these financial statements present fairly the financial position of the company as at 31st March, 1972 and the results of its operations and the source and application of funds for the period then ended, in accordance with generally accepted accounting principles applied on a consistent basis.

Bradford, Ontario
12th April, 1972



G.H. WARD & PARTNERS
Chartered Accountants

CARD LAKE COPPER MINES LIMITED
Incorporated under the Laws of the Province of Ontario

BALANCE SHEET

AT 31ST MARCH, 1972
(with comparative amounts at 30th April, 1971)

	<u>1972</u>	<u>1971</u>
<u>ASSETS</u>		
<u>CURRENT</u>		
Cash	\$ -	\$ 4,110
Prepaid expenses	<u>1,000</u>	<u>-</u>
	<u>1,000</u>	<u>4,110</u>
<u>EQUIPMENT - at cost</u>	<u>1,289</u>	<u>-</u>
<u>UNPATENTED MINING CLAIMS (note 1)</u>	<u>13,201</u>	<u>96,851</u>
<u>OTHER ASSETS</u>		
Deferred exploration and development costs less amounts written off for abandoned claims	32,799	61,548
Deferred administrative costs less amounts written off for abandoned claims	3,643	9,821
Incorporation expenses	<u>4,464</u>	<u>4,464</u>
	<u>40,906</u>	<u>75,833</u>
	<u>\$ 56,396</u>	<u>\$176,794</u>

LIABILITIES

<u>CURRENT</u>		
Bank overdraft	\$ 879	\$ -
Accounts payable and accrued expenses	<u>750</u>	<u>3,291</u>
	<u>1,629</u>	<u>3,291</u>

SHAREHOLDERS' EQUITY

<u>CAPITAL STOCK</u>		
Authorized 3,000,000 no par value shares (note 2)		
Issued 1,400,005 shares (1,295,505 - 1971) note 3	<u>188,680</u>	<u>173,503</u>
	<u>190,309</u>	<u>176,794</u>
<u>DEFICIT</u>	<u>133,913</u>	<u>-</u>
	<u>\$ 56,396</u>	<u>\$176,794</u>

See the accompanying note to these financial statements

Approved by the Board:

Director

Director

CARD LAKE COPPER MINES LIMITED

NOTES TO FINANCIAL STATEMENTS

AT 31ST MARCH, 1972

NOTE 1 Unpatented Mining Claims

At 31st March, 1972 the company owned:

- | | |
|--|------------------|
| (1) A 50% interest in one unpatented mining claim in Saddle Lake Area, Red Lake Mining Division of Ontario, acquired for performance of 1,000 feet of diamond drilling, at a nominal value | \$ 1 |
| (2) A 50% interest in an option on 27 unpatented mining claims in the Wettlaufer Lake Area, Red Lake Mining Division of Ontario, acquired for cash
The final option payment due November, 1971 has been extended for one year. | 13,000 |
| (3) An option on 17 unpatented mining claims situated in Reeves and Sewell Townships, Porcupine Mining Division of Ontario, acquired for cash.
To keep the option in good standing, the company must pay - \$ 2,000 by 15th July, 1972
- 2,000 by 15th July, 1973
- 25,000 by 15th July, 1974 | 200 |
| | <u>\$ 13,201</u> |

NOTE 2 Capital Stock

By an amendment to the Articles of Incorporation dated 19th February, 1971, the shares of the Corporation, both issued and unissued, were changed from a par value of \$1.00 each to shares having no par value

NOTE 3 Capital Stock Issued and Fully Paid

<u>Consideration</u>	<u>No of Shares</u>	<u>Par Value</u>	<u>Discount</u>	<u>Net</u>
For cash prior to 19th February, 1971	400,005	\$ 400,005	\$322,600	\$ 77,405
For cash since 19th February, 1971	250,000	NPV	-	36,275
For mining claims prior to 19th February, 1971	750,000	750,000	675,000	75,000
	<u>1,400,005</u>	<u>\$1,150,000</u>	<u>\$997,600</u>	<u>\$188,680</u>

During the eleven month period ended 31st March, 1972, 104,500 shares were issued for cash, netting the company \$15,177

CARD LAKE COPPER MINES LIMITED

NOTES TO FINANCIAL STATEMENTS

AT 31ST MARCH, 1972

NOTE 4 Remuneration of Directors and Senior Officers

The remuneration paid during the eleven month period ended 31st March, 1972 to directors and senior officers was \$500. During the ten month period ended 30th April, 1971 the amount paid was \$1,659

NOTE 5 Changes in Accounting Periods

By by-law number 63 approved at a general meeting of the shareholders on 18th February, 1971 the company's financial year was set at 30th April of each year. Consequently the accounting periods shown in these financial statements are as follows:

From incorporation on 4th March, 1969 to 30th June, 1969	4 months
From 30th June, 1969 to 30th June, 1970	12 months
From 30th June, 1970 to 30th April, 1971	10 months
From 30th April, 1971 to 31st March, 1972	11 months

The periods ended 30th April, 1971 and 31st March, 1972 are reasonably comparable as to the activities of the company on an annual basis.

CARD LAKE COPPER MINES LIMITED

STATEMENT OF DEFICIT

FOR THE ELEVEN MONTHS ENDED 31ST MARCH, 1972

<u>DEFICIT</u> beginning of period	\$ Nil
<u>ADD</u>	
Cost of mining claims abandoned during the period	83,850
Deferred exploration and development costs on claims abandoned	41,383
Deferred administration costs on claims abandoned	<u>8,680</u>
<u>DEFICIT</u> end of period	<u>\$133,913</u>

There were no transactions in the Deficit Account prior to 30th April, 1971

See the accompanying notes to these financial statements.

CARD LAKE COPPER MINES LIMITED

STATEMENT OF SOURCE AND APPLICATION OF FUNDS

FOR THE PERIODS SET OUT IN NOTE 5 OF THE NOTES TO FINANCIAL STATEMENTS

	<u>4 months to 30th June 1969</u>	<u>12 months to 30th June 1970</u>	<u>10 months to 30th April 1971</u>	<u>11 months to 31st March 1972</u>
<u>SOURCE OF FUNDS</u>				
Issue of capital stock	\$ 5	\$77,400	\$21,098	\$15,177
<hr/>				
<u>APPLICATION OF FUNDS</u>				
Acquisition of mining claims and options	-	10,180	11,670	200
Expenditures on exploration and development	5,458	51,272	4,819	12,634
Expenditures on general and administrative expenses	2,751	2,956	4,114	2,502
Incorporation costs	4,160	179	125	-
Expenditures on equipment	-	-	-	1,289
	<hr/>	<hr/>	<hr/>	<hr/>
	12,369	64,587	20,728	16,625
<hr/>				
<u>INCREASE (DECREASE) in</u> working capital	(12,364)	12,813	370	(1,448)
<hr/>				
<u>WORKING CAPITAL (DEFICIENCY)</u> beginning of period	-	(12,364)	449	819
<hr/>				
<u>WORKING CAPITAL (DEFICIENCY)</u> end of period	\$ (12,364)	\$ 449	\$ 819	\$ (629)
<hr/>				

See the accompanying notes to these financial statements

CARD LAKE COPPER MINES LIMITED

STATEMENT OF DEFERRED EXPLORATION AND DEVELOPMENT COSTS

FOR THE PERIODS SET OUT IN NOTE 5 OF THE NOTES TO FINANCIAL STATEMENTS

	4 months to 30th <u>June 1969</u>	12 months to 30th <u>June 1970</u>	10 months to 30th <u>April 1971</u>	11 months to 31st <u>March 1972</u>
<u>CARD LAKE AREA,</u>				
<u>RED LAKE MINING DIVISION</u>				
Assaying	\$ 8	\$ 144	\$ -	\$ -
Camp expenses	131	124	-	-
Drilling	4,000	4,777	-	-
Engineering	300	910	472	(350)
Licenses	549	145	-	135
Transportation	470	1,975	-	-
Surveying and linecutting	-	10,518	-	-
Wages and benefits	-	772	-	-
	<u>5,458</u>	<u>19,365</u>	<u>472</u>	<u>(215)</u>
Balance, beginning of period	-	5,458	24,823	25,295
	<u>\$ 5,458</u>	<u>\$24,823</u>	<u>\$25,295</u>	<u>25,080</u>
Less amounts written off on abandoned claims				<u>25,080</u>
Balance, end of period				<u>Nil</u>
<u>SADDLE LAKE AREA,</u>				
<u>RED LAKE MINING DIVISION</u>				
Assaying	-	\$ 54	\$ -	-
Camp expenses	-	205	-	-
Drilling	-	9,089	(75)	-
Engineering	-	5	-	-
Transportation	-	1,374	-	-
Surveying and linecutting	-	395	-	-
Wages and benefits	-	589	-	-
	-	<u>11,711</u>	<u>(75)</u>	-
Balance, beginning of period	-	-	11,711	11,636
Balance, end of period	-	<u>\$11,711</u>	<u>\$11,636</u>	<u>\$11,636</u>
<u>WETTLAUFER LAKE AREA,</u>				
<u>RED LAKE MINING DIVISION</u>				
Assaying	-	\$ 222	\$ 194	\$ -
Camp expenses	-	82	226	-
Drilling	-	2,440	686	-
Engineering	-	29	950	51
Transportation	-	547	347	(93)
Surveying and linecutting	-	525	1,582	-
Wages and benefits	-	131	353	-
	-	<u>3,976</u>	<u>4,338</u>	<u>(42)</u>
Balance, beginning of period	-	-	3,976	8,314
Balance, end of period	-	<u>\$ 3,976</u>	<u>\$ 8,314</u>	<u>\$ 8,272</u>

See the accompanying notes to these financial statements



ASSESSMENT WORK DETAILS

Township or Area Reeves and Sewell Twp.

Type of Survey Magnetometer
A separate form is required for each type of survey

Chief Line Cutter John J. Johnson
or Contractor Timmins, Ont.
Name
Address

Party Chief John J. Johnson
Timmins, Ont.
Name
Address

Consultant F. P. Tagliamonte
134 - 19th St.
Marandah Quebec
Name
Address

List numerically

P 278 975
P 278 976
P 278 977
P 278 978
P 278 979
P 278 980
P 278 991
P 278 992
P 278 993
P 278 994
P 278 995
P 278 996
P 291 950
P 291 951
P 291 952
P 291 953
TOTAL <u>16</u>

If space insufficient, attach list

COVERING DATES

Line Cutting August 20/71 to Sept 2/71

Field Sept 1/71 to Sept 27/71
Instrument work, geological mapping, sampling etc.

Office Sept 28/71 to Oct 9/71

INSTRUMENT DATA

Make, Model and Type MicPhar-M700-Slungate

Scale Constant or Sensitivity 20 gamma per scale div.
Or provide copy of instrument data from Manufacturer's brochure.

Radiometric Background Count —

Number of Stations Within Claim Group 1725

Number of Readings Within Claim Group 1725

Number of Miles of Line cut Within Claim Group 17.35

Number of Samples Collected Within Claim Group —

CREDITS REQUESTED

	20 DAYS per claim	40 DAYS per claim	Includes (Line cutting)
Geological Survey	<input type="checkbox"/>	<input checked="" type="checkbox"/>	
Geophysical Survey	<input type="checkbox"/>	<input checked="" type="checkbox"/>	Show Check <input checked="" type="checkbox"/>
Geochemical Survey	<input type="checkbox"/>	<input type="checkbox"/>	

DATE Oct 25/71

SIGNED John Johnson

Send in duplicate to:
 FRED W. MATTHEWS
 SUPERVISOR-PROJECTS
 DEPARTMENT OF MINES &
 NORTHERN AFFAIRS
 WHITNEY BLOCK
 QUEEN'S PARK
 TORONTO, ONTARIO

RECEIVED
 DEC 6 1971

PROJECTS
SECTION

SUBMISSION OF GEOLOGICAL, GEOPHYSICAL AND GEOCHEMICAL SURVEYS
AS ASSESSMENT WORK

In order to simplify the filing of geological, geochemical and ground geophysical surveys for assessment work, the Minister has approved the following procedure under Section 84 (8a) of the Ontario Mining Act. This special provision does not apply to airborne geophysical surveys.

If, in the opinion of the Minister, a ground geophysical survey meets the requirements prescribed for such a survey, including:

- (a) substantial and systematic coverage of each claim
- (b) line spacing not exceeding 400 foot intervals
- (c) stations not exceeding 100 foot intervals or
- (d) the average number of readings per claim not less than 40 readings

it will qualify for a credit of 40 assessment work days for each claim so covered. It will not be necessary for the applicant to furnish any data or breakdown concerning the persons employed in the survey except for the names and addresses of those in charge of the various phases (linecutting contractor, etc.). It will be assumed that the required number of man days were spent in producing the survey to qualify for the specified credit.

Each additional ground geophysical survey using the same grid system and otherwise meeting these requirements will qualify for an assessment work credit of 20 days.

A geological survey using the same grid system, and meeting the requirements for submission of geological surveys for maximum credits will qualify for an assessment work credit of 20 days. If line cutting has not previously been reported with any other survey and is reported in conjunction with the geological survey a credit of 40 days per claim will be allowed for the survey.

Similarly, a geochemical survey using the same grid system with the average number of collected samples per claim being not less than 40 samples, and meeting the requirements for the submission of geochemical surveys for maximum credits, will qualify for an assessment work credit of 20 days. If line cutting has not previously been reported with any other survey and is reported in conjunction with the geochemical survey a credit of 40 days per claim will be allowed for the survey.

Credits for partial coverage or for surveys not meeting requirements for full credit will be granted on a pro-rata basis.

If the credits are reduced for any reason, a fifteen day Notice of Intent will be issued. During this period, the applicant may apply to the Mining Commissioner for relief if his claims are jeopardized for lack of work or, if he wishes, may file with the Department, normal assessment work breakdowns listing the names of the employees and the dates of work. The survey would then be re-assessed to determine if higher credits may be allowed under the provisions of subsections 8 and 9 of section 84 of the Mining Act.

If new breakdowns are not submitted, the Performance and Coverage credits are confirmed to the Mining Recorder at the end of the fifteen days.

PERFORMANCE & COVERAGE CREDITS

ASSESSMENT WORK DETAILS

MINING CLAIMS TRAVERSED

List numerically

Township or Area Rever & Lowell Twp

Type of Survey Electromagnetic
A separate form is required for each type of survey

Chief Line Cutter or Contractor John J. Johnson
Name
Winnipeg, Ont.
Address

Party Chief John J. Johnson
Name
Winnipeg, Ont.
Address

Consultant W. P. MacLennan
Name
134 ...
Address

- P 275 975
- P 275 976
- P 275 977
- P 275 978
- P 275 979
- P 275 980
- P 275 991
- P 275 992
- P 275 993
- P 275 994
- P 275 995
- P 275 996
- P 291 950
- P 291 951
- P 291 952
- P 291 953
- TOTAL 16

If space insufficient, attach list

COVERING DATES

Line Cutting August 1970 to Dec 2/71

Field Sept 1/71 to Dec 29/71
Instrument work, geological mapping, sampling etc.

Office Sept 22/71 to Oct 2/71

INSTRUMENT DATA

Make, Model and Type McPhar 553 15 Vertical

Scale Constant or Sensitivity 1000 C.P.S.
Or provide copy of instrument data from Manufacturer's brochure.

Radiometric Background Count ---

Number of Stations Within Claim Group 551

Number of Readings Within Claim Group 551

Number of Miles of Line cut Within Claim Group 17.35

Number of Samples Collected Within Claim Group ---

CREDITS REQUESTED

	<u>20 DAYS</u> per claim	<u>40 DAYS</u> per claim	Includes (Line cutting)
Geological Survey	<input type="checkbox"/>	<input type="checkbox"/>	
Geophysical Survey	<input checked="" type="checkbox"/>	<input type="checkbox"/>	Show Check <input checked="" type="checkbox"/>
Geochemical Survey	<input type="checkbox"/>	<input type="checkbox"/>	

DATE Oct 25/71

SIGNED John J. Johnson

Send in duplicate to:
 FRED W. MATTHEWS
 SUPERVISOR-PROJECTS
 DEPARTMENT OF MINES &
 NORTHERN AFFAIRS
 WHITNEY BLOCK
 QUEEN'S PARK
 TORONTO, ONTARIO

RECEIVED

DEC 6 1971

PROJECTS
SECTION

SUBMISSION OF GEOLOGICAL, GEOPHYSICAL AND GEOCHEMICAL SURVEYS

AS ASSESSMENT WORK

In order to simplify the filing of geological, geochemical and ground geophysical surveys for assessment work, the Minister has approved the following procedure under Section 84 (8a) of the Ontario Mining Act. This special provision does not apply to airborne geophysical surveys.

If, in the opinion of the Minister, a ground geophysical survey meets the requirements prescribed for such a survey, including:

- (a) substantial and systematic coverage of each claim
- (b) line spacing not exceeding 400 foot intervals
- (c) stations not exceeding 100 foot intervals or
- (d) the average number of readings per claim not less than 40 readings

it will qualify for a credit of 40 assessment work days for each claim so covered. It will not be necessary for the applicant to furnish any data or breakdown concerning the persons employed in the survey except for the names and addresses of those in charge of the various phases (linecutting contractor, etc.). It will be assumed that the required number of man days were spent in producing the survey to qualify for the specified credit.

Each additional ground geophysical survey using the same grid system and otherwise meeting these requirements will qualify for an assessment work credit of 20 days.

A geological survey using the same grid system, and meeting the requirements for submission of geological surveys for maximum credits will qualify for an assessment work credit of 20 days. If line cutting has not previously been reported with any other survey and is reported in conjunction with the geological survey a credit of 40 days per claim will be allowed for the survey.

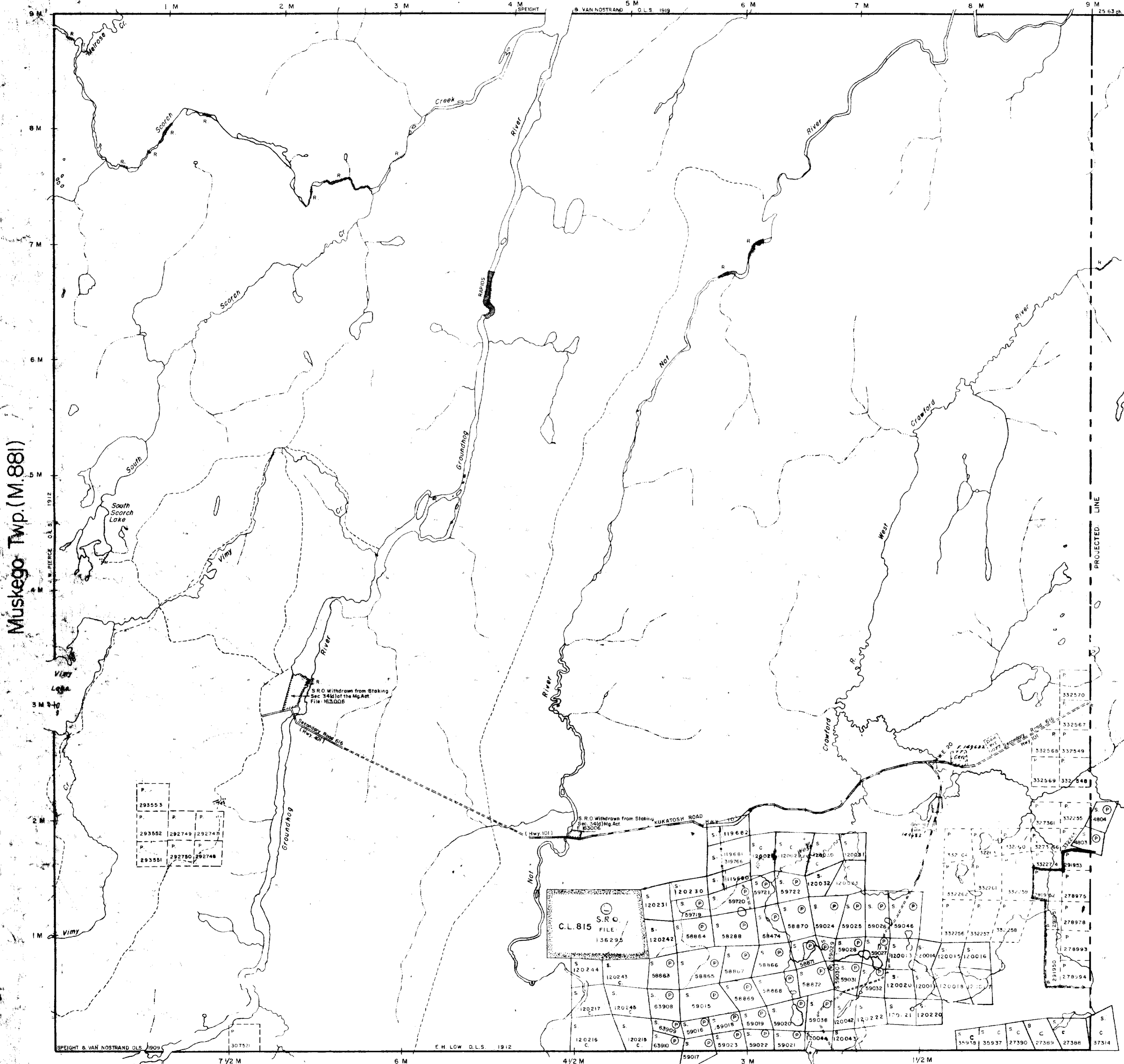
Similarly, a geochemical survey using the same grid system with the average number of collected samples per claim being not less than 40 samples, and meeting the requirements for the submission of geochemical surveys for maximum credits, will qualify for an assessment work credit of 20 days. If line cutting has not previously been reported with any other survey and is reported in conjunction with the geochemical survey a credit of 40 days per claim will be allowed for the survey.

Credits for partial coverage or for surveys not meeting requirements for full credit will be granted on a pro-rata basis.

If the credits are reduced for any reason, a fifteen day Notice of Intent will be issued. During this period, the applicant may apply to the Mining Commissioner for relief if his claims are jeopardized for lack of work or, if he wishes, may file with the Department, normal assessment work breakdowns listing the names of the employees and the dates of work. The survey would then be re-assessed to determine if higher credits may be allowed under the provisions of subsections 8 and 9 of section 84 of the Mining Act.

If new breakdowns are not submitted, the Performance and Coverage credits are confirmed to the Mining Recorder at the end of the fifteen days.

Melrose Twp.(M.861)



Muskego Twp.(M.881)

Sewell Twp.(M.1102)

Penhorwood Twp.(M.1055)

THE TOWNSHIP OF


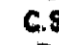

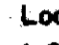
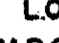




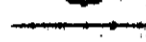
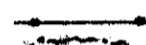


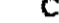

REEVES

Calaim map. DISTRICT OF SUDBURY

PORCUPINE MINING DIVISION

SCALE: 1-INCH = 40 CHAINS

LEGEND

- PATENTED LAND 
- CROWN LAND SALE 
- LEASES 
- LOCATED LAND 
- LICENSE OF OCCUPATION 
- MINING RIGHTS ONLY 
- SURFACE RIGHTS ONLY 
- ROADS 
- IMPROVED ROADS 
- KING'S HIGHWAYS 
- RAILWAYS 
- POWER LINES 
- MARSH OR MUSKEG 
- MINES 
- CANCELLED 

NOTES

400' SURFACE RIGHTS RESERVATION AROUND ALL LAKES AND RIVERS.

DATE OF ISSUE: 1971

PLAN NO. M.1074

ONTARIO DEPARTMENT OF MINES AND NORTHERN AFFAIRS

2703



SOIL-M

SOIL-M

MELROSE TWP
M-861

FREY TWP M-819

THE TOWNSHIP OF

SEWELL
Claim Map
DISTRICT OF
SUDBURY

PORCUPINE
MINING DIVISION

SCALE: 1-INCH = 40 CHAINS

LEGEND

- PATENTED LAND Ⓟ
- CROWN LAND SALE C.S.
- LEASES Ⓞ
- LOCATED LAND Loc.
- LICENSE OF OCCUPATION L.O.
- MINING RIGHTS ONLY M.R.O.
- SURFACE RIGHTS ONLY S.R.O.
- ROADS —
- IMPROVED ROADS —
- KING'S HIGHWAYS —
- RAILWAYS —
- POWER LINES —
- MARSH OR MUSKIEG —
- MINES CANCELLED ⓧ

NOTES

400' surface rights reservation around all lakes & rivers

REEVES TWP M-1074

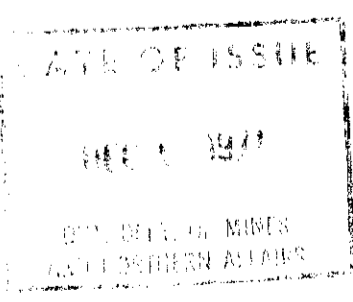
KEEFER TWP M-290

HILLARY TWP M-286

KENOGAMING TWP

M-967

PHARAND TWP
M-306



PLAN NO. - **M-1102**

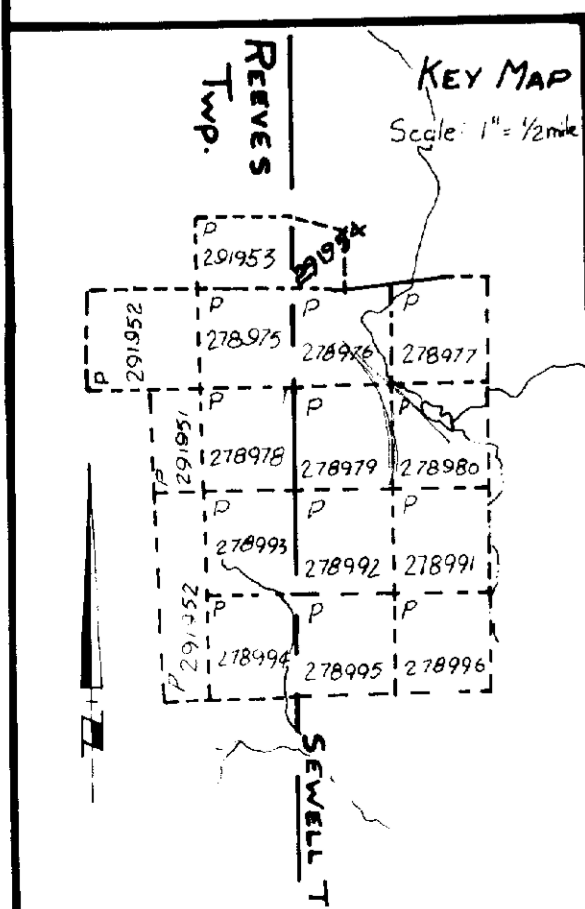
ONTARIO
DEPARTMENT OF MINES
AND NORTHERN AFFAIRS

2.703

SEWELL TWP

SOIL-M





LEGEND

Graphic Scale 1" = 20'

- Contactor wires
- R Receiver cross over
- ▲ Transmitter location
- 1/2" Read from transmitter location
- Corner Post location

Surveyed by J.J. Johnson, 1955

Card Lake Copper Mines Limited

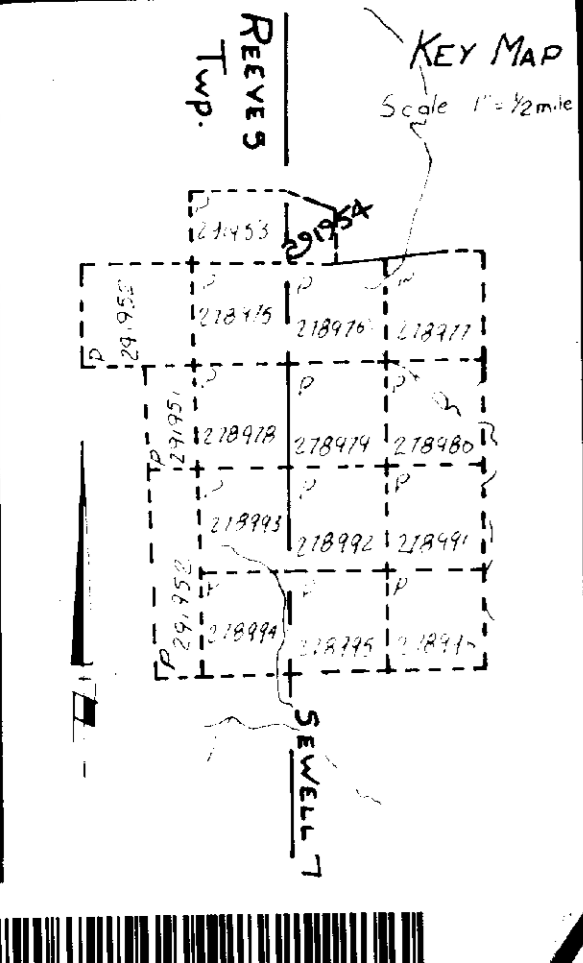
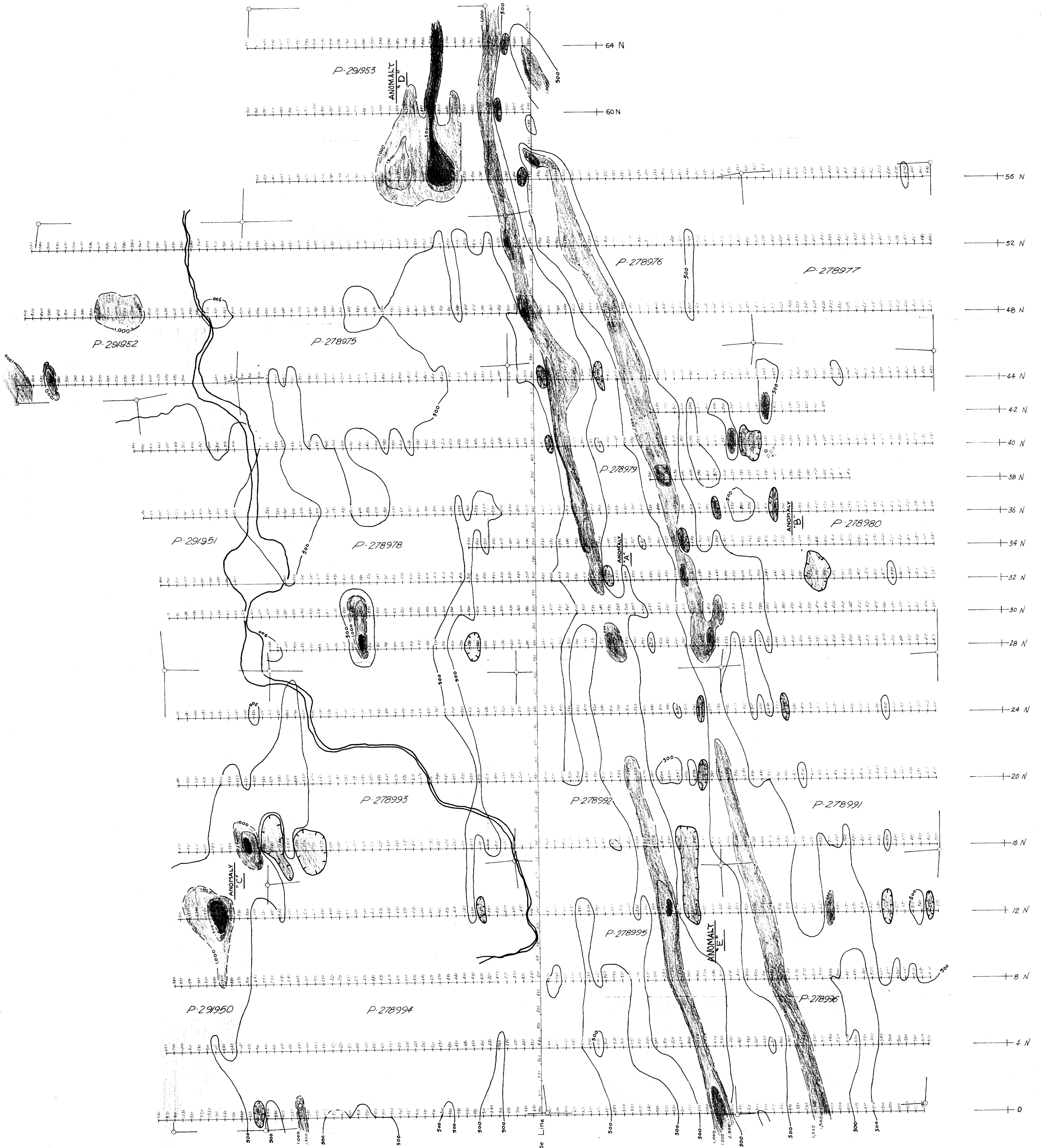
ELECTROMAGNETIC SURVEY

REEVES & SEWELL TWP
Ontario

Scale 1" = 200'

Survey by J.J. Johnson

Survey date: 1955



LEGEND

- Magnetic anomaly contours (500, 1000, 1500, 2000)
- Profile lines (P-291951 to P-278994)
- Base Line
- Temp. Line
- Anomaly A, B, C, E

Card Lake Copper Mines Limited	
Magnetometer Survey	
REEVES & SEWELL TWP. Ontario	
Scale: 1" = 200'	Survey by: J.J. Johnson