



42A04NW0044 24 SEWELL

010

Diamond Drilling

Township OF SEWELL

Report NO: 24

Work performed by: A. WRIGHT

Claim NO	Hole NO	Footage	Date	Note
P. 313446	G-1-74	377'	Aug/74	(1)
P. 313450	G-2-74	334'	Aug/74	(1)
	G-3-74	491'	Aug/74	(1)

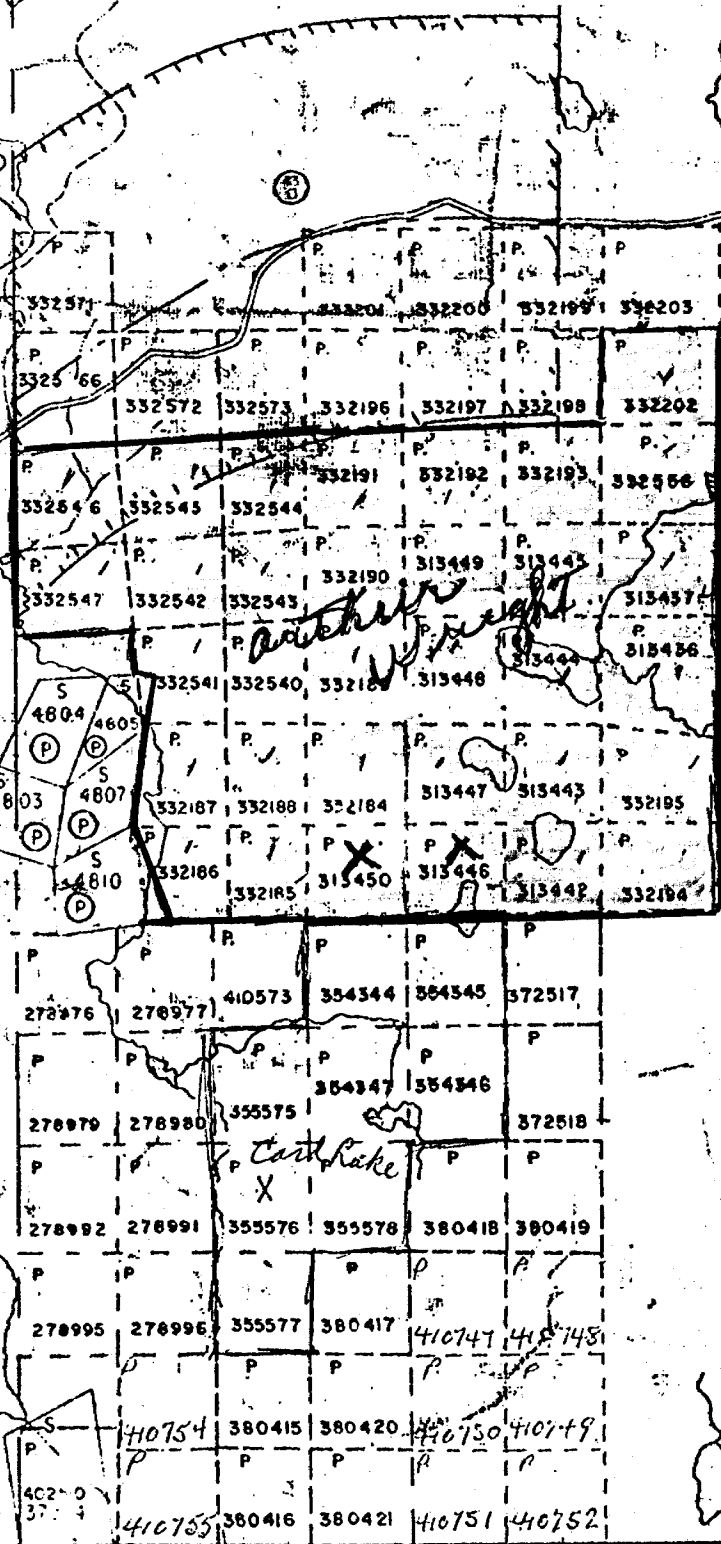
3DDH

1202'

Notes:

(1) 180/74

REEVES TWP.



#180/74 Sewell Twp
A. WRIGHT

G-3-74

420'

Claim Post

71'

G-2-74

160

174

P 313450

ROAD

P 313446

LAKE

G-1-74

377'

Claim Post



Diamond Drill Hole Locations
CARD LAKE COPPER MINES
SEWELL TWP.
Scale: 1" = 200'



THE MINING ACT - DEPARTMENT OF MINES
DIAMOND DRILLING LOG

Start a new page for every new hole, but fill in top portion of form only on first page for each hole.

FILL IN ON EVERY PAGE

HOLE NO. G-1-74 PAGE NO. 1

DRILLING COMPANY Hosking Diamond Drilling		COLLAR ELEVATION Surface	BEARING OF HOLE FROM TRUE NORTH 117° E	TOTAL FOOTAGE 377'	DIP OF HOLE AT collar -45°	LOCATION OF HOLE IN RELATION TO A FIXED POINT ON THE CLAIM	MAP REFERENCE NO.	CLAIM NO. P313446
DATE HOLE STARTED August 15, 1974	DATE COMPLETED August 17, 1974	DATE LOGGED Aug. 20/74	LOGGED BY D. R. Bell		ft		LOCATION (Tp., Lot, Con. OR Lat. and Long.) Sewell Township	PROPERTY NAME
EXPLORATION CO., OWNER OR OPTIONEE Card Lake Copper Mines Ltd.		DATE SUBMITTED	SUBMITTED BY (Signature) D. R. Bell		ft			
					ft			

FOOTAGE		ROCK TYPE	DESCRIPTION Colour, grain size, texture, minerals, alteration, etc.	PLANAR FEATURE ANGLE *	CORE SPECIMEN FOOTAGE †	YOUR SAMPLE NUMBER	SAMPLE FOOTAGE		SAMPLE LENGTH	ASSAYS †	
FROM	TO						FROM	TO			
0	2	OVERBURDEN									
0	220	Diorite	Dark green to medium green, fine to medium grained mottled appearance, pyroxene, hornblende/amphibole, feldspar. Fine grained localized cubic py. 0.5-2.0%, concentrated locally about quartz contacts. Scattered 1/16"-1/8" blue quartz meta-crysts. Finer grained sections absent of meta-crysts. Magnetism is locally weak.								
			105'-113' Shear zone: 55°-65° to core, Qtz. stringers 1/8" - 1/4" from 110.0' - 110.5'.								
			137'-152' Qtz. zone: 5-8% qtz., 1/16" - 2", 10° - 35° to core, 0.5-1.0% diss. cube py.								
			188'-220' Qtz. zone: 5-8% qtz., 1/16" - 1-1/2", 10°-25° to core, 0.5% diss. py.								
220	313	Diorite Porphyry	Dark green, medium grained, with black black 1/8"-3/8" mafic meta-crysts (amphibole?). Moderate magnetism.								
			294'-313' Qtz. Zone: 10-15% qtz.								
			302'-304' Mass. wt. qtz., trace galena carbonate alteration from 304'-313'. foliation 35° to core.								

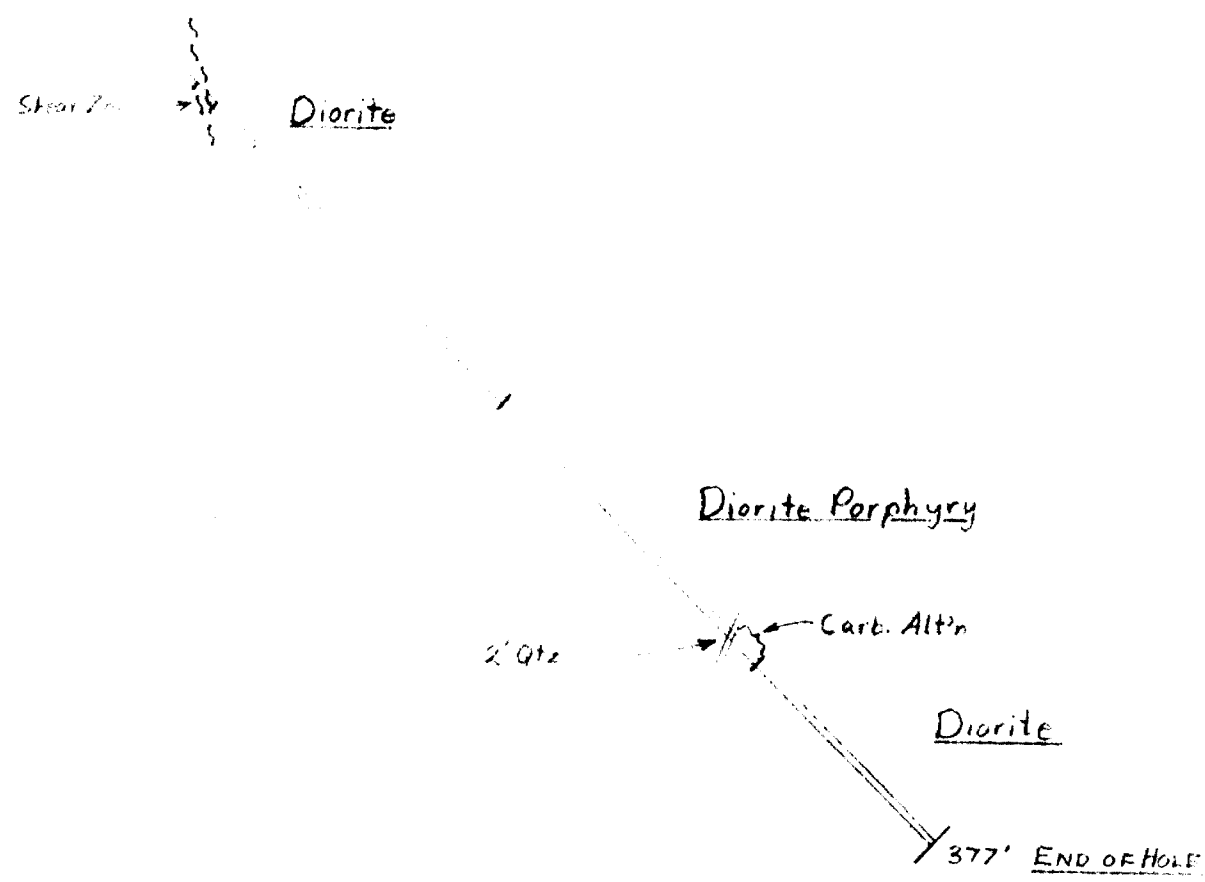
* For features such as foliation, bedding, schistosity, measured from the long axis of the core.

† Additional credit available. See Assessment Work Regulations.

West

East

6-1-74



Card Lake Copper Mines Ltd.

Sewell Twp.

Scale: 1" = 50'

D. R. Bell



THE MINING ACT - DEPARTMENT OF MINES
DIAMOND DRILLING LOG

Start a new page for every new hole, but fill in top portion of form only on first page for each hole.

FILL IN ON EVERY PAGE
HOLE NO. **G-2-74** PAGE NO. **1**

DRILLING COMPANY Hoskins Diamond Drilling		COLLAR ELEVATION Surface	BEARING OF HOLE FROM TRUE NORTH 105° E.	TOTAL FOOTAGE 334'	DIP OF HOLE AT COLLAR -45°	LOCATION OF HOLE IN RELATION TO A FIXED POINT ON THE CLAIM	MAP REFERENCE NO.	CLAIM NO.
DATE HOLE STARTED August 18, 1974	DATE COMPLETED August 20, 1974	DATE LOGGED Aug. 21/74	LOGGED BY D. R. Bell		ft	LOCATION (Tp., Lot, Con. OR Lat. and Long.) Sewell Township	PROPERTY NAME	
EXPLORATION CO., OWNER OR OPTIONEE Card Lake Copper Mines Ltd.		DATE SUBMITTED	SUBMITTED BY (Signature) <i>D. R. Bell</i>		ft			
					ft			
					ft			

FOOTAGE		ROCK TYPE	DESCRIPTION Colour, grain size, texture, minerals, alteration, etc.	PLANAR FEATURE ANGLE	CORE SPECIMEN FOOTAGE +	YOUR SAMPLE NUMBER	SAMPLE FOOTAGE		SAMPLE LENGTH	ASSAYS +			
FROM	TO						FROM	TO					
0	2	OVERBURDEN											
2	334	Diorite	Dark green to medium green, medium to fine grained mottled appearance, pyroxene, hornblende and feldspar. Localized fine grained sections, andesite volcanic. Magnetism is weak. 2'-160', 2-10% blue/white 1/16"-1/8" qtz. porpho-blasts. 0.5-2% scattered fine grained cubic py, locally concentrated about the quartz veins. Quartz veins are massive and white with minor mottled smoky grey sections, 1/8"-6" wide, average 3/4"-1". Quartz dip is 15-30° to core, average 25°. 31'-93' Quartz Zone: 5-8% quartz, scattered galena and trace cp. 44.8' - 45.6' Trace Pb. 47.5' 2" Qtz. 72.0' 1/4" qtz., 1% Pb., trace Sp. 80.0' - 80.2' Qtz., trace Py. 80.4' - 80.6' Qtz. " " 127'-133' Broken ground, 5-6% py. 115'-183' 10-15%, 1/8" - 1/4" mafic metal crystals in a mottled Diorite. 170'-265' Quartz Zone: 8-10% quartz, 1/16" - 4", average 3/4". 251', 1" qtz. 3% Pb. 259.8' - 260.2', 1/4"-1" qtz. network, trace Pb.										

* For features such as foliation, bedding, schistosity, measured from the long axis of the core.

+ Additional credit available. See Assessment Work Regulations.

West

East

6-2-74

P313450

P313446

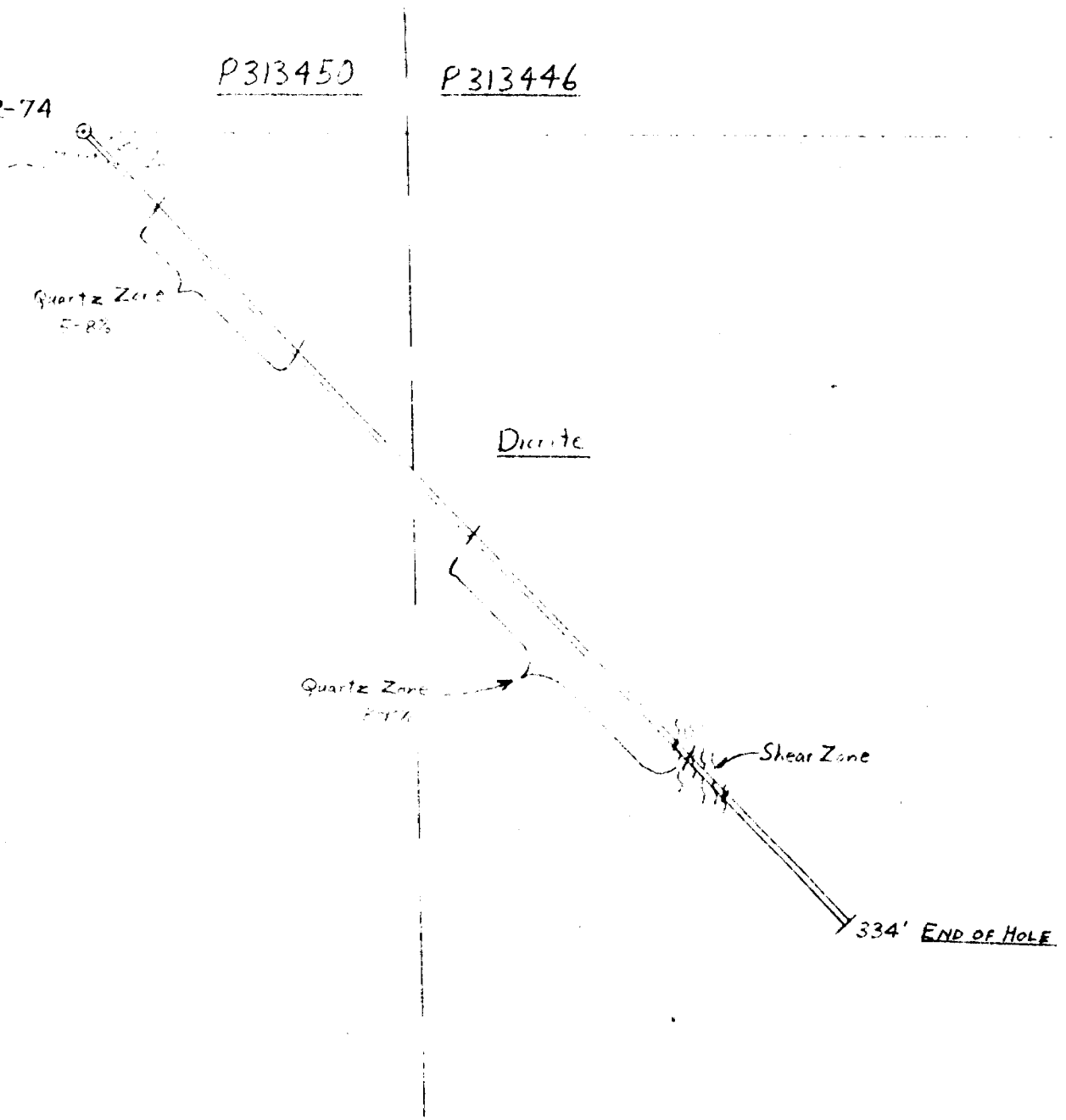
Quartz Zone
5-8%

Diorite

Quartz Zone
7-1%

Shear Zone

334' END OF HOLE



Card Lake Copper Mines Ltd.

Sewell Twp

Scale 1"=50'

D. R. Reed



THE MINING ACT - DEPARTMENT OF MINES
DIAMOND DRILLING LOG

Start a new page for every new hole, but fill in top portion of form only on first page for each hole.

FILL IN ON EVERY PAGE

HOLE NO. **G-3-74** PAGE NO. **2**

DRILLING COMPANY		COLLAR ELEVATION	BEARING OF HOLE FROM TRUE NORTH	TOTAL FOOTAGE	DIP OF HOLE AT collar	LOCATION OF HOLE IN RELATION TO A FIXED POINT ON THE CLAIM	MAP REFERENCE NO.	CLAIM NO.		
DATE HOLE STARTED	DATE COMPLETED	DATE LOGGED	LOGGED BY		ft		LOCATION (Tp., Lot, Con. OR Lot. and Long.)			
EXPLORATION CO., OWNER OR OPTIONEE		DATE SUBMITTED	SUBMITTED BY (Signature)		ft					
					ft					
					ft		PROPERTY NAME			

FOOTAGE		ROCK TYPE	DESCRIPTION Colour, grain size, texture, minerals, alteration, etc.	PLANAR FEATURE ANGLE *	CORE SPECIMEN FOOTAGE †	YOUR SAMPLE NUMBER	SAMPLE FOOTAGE		SAMPLE LENGTH	ASSAYS †	
FROM	TO						FROM	TO			
67.5'	124.9'	Diorite Quartz Porphyry	Massive, medium grained, medium - dk. green, feldspar-pyroxene matrix, scattered 2-3% 1/16"-1/8" blue quartz meta crystals. Fine diss. magnetite 1-2%, 1-3% diss. patches of py. Weak - moderate magnetism.								
			73.0' 1/4 qtz., 65° to core, 2-3% diss. cube py.								
			75.0' 1/4" qtz.-Carb. stringer, 15° to core, 1-2% py.								
			78.0' 1/2"-3/4" qtz., 50° to core, trace py. and hematite.								
			80.2' 1/8" qtz.-Carb. str., 10° to core.								
			82.0'-83.0' (14-15) 1/16" Carb. fractures 10-15° to core								
			83.0'-85.5' Shear Zone, 70-75° to core, few scattered carb. stringers parallel to shear.								
			85.5'-92.0' "Agglomerate Tuff" fin. gn'd light grey-dk. grey mafic volcanic tuff, with 1/16"-1/8" mafic meta crystals, 2"-5" bombs. 2-3% fine gn'd cube py. diss. throughout mass. Contact at 92.0' is 60-65° to core, pencil thin and no baking or chilling.								
			92.0'-93.5' 5, 1/8"-1/4" atz. stringers. 10-25° to core 5-6% diss. py.								
			100'-103' 10-12 1/8"-1/4" qtz. stringers. Minor carbonate, 102" 3/4" vein 25° to core. 3-5% py.								
			* 106.5-111.0' Numerous qtz.-carb. stringers and fractures 1/16"-1/8", 10-35° to core. 109' 1/2" qtz., 20°, and 1/2" qtz. 65° to core 110'-111' 6 1/8"-1/4" qtz. 10° 4-6% diss. py.								

* Additional grade available. See Assessment Work Regulations.



DIAMOND DRILLING LOG

Start a new page for every new hole, but fill in top portion of form only on first page for each hole.

FILL IN ON EVERY PAGE

HOLE NO. **G-3-74** PAGE NO. **3**

DRILLING COMPANY		COLLAR ELEVATION	BEARING OF HOLE FROM TRUE NORTH	TOTAL FOOTAGE	DIP OF HOLE AT collar	LOCATION OF HOLE IN RELATION TO A FIXED POINT ON THE CLAIM	MAP REFERENCE NO.	CLAIM NO.		
DATE HOLE STARTED	DATE COMPLETED	DATE LOGGED	LOGGED BY		ft		LOCATION (Tp., Lot, Con. OR Lat. and Long.)			
EXPLORATION CO., OWNER OR OPTIONEE		DATE SUBMITTED	SUBMITTED BY (Signature)		ft					
					ft					
					ft		PROPERTY NAME			

FOOTAGE FROM	TO	ROCK TYPE	DESCRIPTION Colour, grain size, texture, minerals, alteration, etc.	PLANAP FEATURE ANGLE	CORE SPECIMEN FOOTAGE +	YOUR SAMPLE NUMBER	SAMPLE FOOTAGE		SAMPLE LENGTH	ASSAYS +	
							FROM	TO			
			120-121' 3-4% diss. py., trace cp., 1-2% mag. 120.5' 1/4" qtz. 25° to core.								
124.9	132.0	Mass. Uniform Mafic Volcanic (Andesite)	Fn. gn'd massive uniform mafic volcanic, fractured by num. fine carbonate stringers, 30-60° to core, 5-6 per foot. 1-2% fine diss. py. Weak-mod. magnetism - lower contact 15° to core, no baking, no chill margin.								
132.0	174.5	Diorite Qtz. Porphyry Alt'd & Mineralized	Similar to 67.5-124.9 Scattered 1-2% blue qtz. meta crystals. Mod. magnetism - 5-6% diss. py., trace cp., 2-5% magnetite, some local conceptions of py. 8-12% for 3-4". Numerous earthy brown (amphibole) meta crystals, 4-8% throughout mass., pyrite replacing some of these crystals.								
			132.5' 1/4" qtz., 20° to core, 1-2% py.								
			135.5' 1/4" qtz., 10° to core, 1-2% py.								
			140.3' 1/8" qtz., 40° to core, 5-6% py.								
			142.5' 1/4" qtz., 75° to core, 2-3% py.								
			138.5-144.0' 6-8% diss. py., trace cp.								
			145.2' 1/4" qtz.-carb. 55° to core, 1-2% py.								
			145.5' 1/4" qtz., 25° to core								
			148.0' 1/8"-1/4" qtz., 70° to core, 8-10% py.								
			152.0' 1/2" qtz., 10° to core, carb. alt'n, 3-5% py.								
			159.0' 5-6" qtz. vein, 45° to core, 10-12% py. trace cp.								
			161.5' 2" qtz., 60° to core, 3-4% py.								
			162.5' 1" qtz., 15° to core, trace py.								
			166.0' 1/4" Vuggy qtz. fracute, 75° to core, 3-4% py.								
			171.5' 1" qtz., epidote, 3-5% py., 2-5% mag. 20° to core								



DIAMOND DRILLING LOG

Start a new page for every new hole, but fill in top portion of form only on first page for each hole.

FILL IN ON EVERY PAGE

HOLE NO. G-3-74 PAGE NO. 6 CLAIM NO.

DRILLING COMPANY, COLLAR ELEVATION, BEARING OF HOLE FROM TRUE NORTH, TOTAL FOOTAGE, DIP OF HOLE AT collar, LOCATION OF HOLE IN RELATION TO A FIXED POINT ON THE CLAIM, MAP REFERENCE NO., DATE HOLE STARTED, DATE COMPLETED, DATE LOGGED, LOGGED BY, EXPLORATION CO., OWNER OR OPTIONEE, DATE SUBMITTED, SUBMITTED BY (Signature), LOCATION (Tp., Lot, Con. OR Lat. and Long.), PROPERTY NAME

Table with columns: FOOTAGE FROM TO, ROCK TYPE, DESCRIPTION, PLANAR FEATURE ANGLE, CORE SPECIMEN FOOTAGE +, YOUR SAMPLE NUMBER, SAMPLE FOOTAGE FROM TO, SAMPLE LENGTH, ASSAYS +. Contains detailed log entries from 274.0 to 327.5 feet.

* For features such as foliation, bedding, schistosity, measured from the long axis of the core.

+ Additional credit available. See Assessment Work Regulations.



THE MINING ACT - DEPARTMENT OF MINES
DIAMOND DRILLING LOG

Start a new page for every new hole, but fill in top portion of form only on first page for each hole.

FILL IN ON EVERY PAGE

HOLE NO. G-3-74	PAGE NO. 7
CLAIM NO.	

DRILLING COMPANY	COLLAR ELEVATION	BEARING OF HOLE FROM TRUE NORTH	TOTAL FOOTAGE	DIP OF HOLE AT COLLAR	LOCATION OF HOLE IN RELATION TO A FIXED POINT ON THE CLAIM	MAP REFERENCE NO.	CLAIM NO.
DATE HOLE STARTED	DATE COMPLETED	DATE LOGGED	LOGGED BY	ft		LOCATION (Tp., Lot, Con. OR Lat. and Long.)	
EXPLORATION CO., OWNER OR OPTIONEE		DATE SUBMITTED	SUBMITTED BY (Signature)	ft		PROPERTY NAME	

FOOTAGE FROM TO	ROCK TYPE	DESCRIPTION Colour, grain size, texture, minerals, alteration, etc.	PLANAR FEATURE ANGLE	CORE SPECIMEN FOOTAGE +	YOUR SAMPLE NUMBER	SAMPLE FOOTAGE		SAMPLE LENGTH	ASSAYS +
						FROM	TO		
274.0	328.5	(Cont'd.)							
		328.0' 3" qtz., 30°, 2-3% py., trace cp.							
328.5	480.0	Meta-Diorite Dk. green, med. gn'd, mottled meta-diorite. Numerous scattered coarse gn'd mafic meta crvsts. Fractured with numerous qtz.-carb veins, 1/16"-1/4" with lighter green alteration. Magnetism is weak. 0.5-1.0% scattered diss. py.							
		329.2' 1" qtz., 25°, trace py.							
		331.0' 2" qtz., 10°, trace py.							
		331.8' 1/4" qtz., 15°, trace py.							
		335.0' 1/4" qtz.-carb., 25°, 1% py.							
		336.0' 2" qtz., 10°, 1% py.							
		337.0' 2 1/2" qtz., 20°, 1% py., trace pb. cp.							
		337.5' 1/4" qtz., 15°, 1% py.							
		328.5-341.0 - Numerous, qtz.-carb. fractures. 5-6 per foot							
		342.5' 1/4" qtz., 50°, 1-2% py.							
		344.5' 1/4" qtz., 60°, 1-2% py.							
		345.3' 2" qtz., 10°, trace py.							
		347.8' 1/4" qtz., 10°, trace py.							
		349.3' 1/4" qtz., 15°, 1% py.							
		350.3' 1/4" qtz., 10°, trace py.							
		353.0' 3" qtz., 10°, trace py.							
		360.1' 2" qtz., 15°, trace py.							
		361.0' 1/4" qtz., 45°, trace py.							
		369.8' 1/2" qtz., 40°, trace py., cp.							
		373.8' 1/4" qtz., 10°, trace py.							
		374.1' 1/4" qtz.-carb., 10°, no.min.							
		374.5' 2" qtz., 10°, trace py.							
		375.2-375.8' (5) 1/4" qtz., 10°, trace py.							

+ Additional credit available. See Assessment Work Regulations.



THE MINING ACT - DEPARTMENT OF MINES
DIAMOND DRILLING LOG

Start a new page for every new hole, but fill in top portion of form only on first page for each hole.

FILL IN ON EVERY PAGE

HOLE NO. **G-3-74** PAGE NO. **8**

DRILLING COMPANY		COLLAR ELEVATION	BEARING OF HOLE FROM TRUE NORTH	TOTAL FOOTAGE	DIP OF HOLE AT collar	LOCATION OF HOLE IN RELATION TO A FIXED POINT ON THE CLAIM	MAP REFERENCE NO.	CLAIM NO.	
DATE HOLE STARTED	DATE COMPLETED	DATE LOGGED	LOGGED BY				LOCATION (Tp., Lot, Con. OR Lat. and Long.)		
EXPLORATION CO., OWNER OR OPTIONEE		DATE SUBMITTED	SUBMITTED BY (Signature)				PROPERTY NAME		

FOOTAGE FROM TO	ROCK TYPE	DESCRIPTION Colour, grain size, texture, minerals, alteration, etc.	PLANAR FEATURE ANGLE *	CORE SPECIMEN FOOTAGE +	YOUR SAMPLE NUMBER	SAMPLE FOOTAGE		SAMPLE LENGTH	ASSAYS +	
						FROM	TO			
328.5	489.0	(Cont'd.)								
		382.0' 1/4" qtz., 15°, trace cp., py.								
		383.1' 1/4" qtz., 40°, 1% py.								
		383.8' 1/8" qtz., 25°, trace py.								
		387.2' 1/8" qtz., 30°, 1% py.								
		387.8-394' Broken ground, sheard 40° to core, 2-3% py.								
		396.5' 1/4" qtz., 10°, 1% py.								
		397.5' 1" qtz., 15°, 1-2% py.								
		399.5-401.0' (14) 1/16"-1/8" qtz.-carb., 15-30°, 1-2% py.								
		405.2' 2" qtz., 55°, 10-12% py.								
		407.5' 1/4" qtz., 10°, 1% py.								
		408.5' 1" qtz., 15°, trace py.								
		414.0' (3) 1/4" qtz., 10-30°, 2-3% py., 0.5% pb.								
		415.0' 1/4" qtz., 65°, 1-2% py., trace pb.								
		415.5' 1/4" qtz., 60°, 1% py.								
		417.0' 1/4" qtz., 60°, 3-5% py.								
		422.2' 1/2" qtz., 20°, trace py.								
		423.2' 1" qtz., 15°, 1% py.								
		423.6' 1/2" qtz., 15°, 1% py., trace pb.								
		(423.0-423.8' - Carb. Alt./oz.)								
		426.5' 1/8" qtz., 60°, trace py., cp.								
		427.0' 1/2" qtz., 10°, trace py., pb.								
		428.5' 1/4" qtz., 20°, trace py.								
		435.8' 1/2" qtz., 25°, trace py.								
		447.5' 2" qtz., 10°, 1% py.								
		450.2' 1/4" qtz., 30°, trace py.								
		450.8' 1/4" qtz., 30°, 1% py.								
		454.0' 1" qtz., 10°, 1-2% py.								
		463.0' 1/4" qtz., 15°, trace py.								
		463.8' 1/4" qtz., 10°, trace py.								
		466.01' 1/4" qtz., 10°, trace py.								

* For features such as foliation, bedding, schistosity, measured from the long axis of the core.

+ Additional credit available. See Assessment Work Regulations.



THE MINING ACT - DEPARTMENT OF MINES
MINERAL DRILLING LOG

Start a new page for every new hole, but fill in top portion of form only on first page for each hole.

FILL IN ON EVERY PAGE

HOLE NO.	PAGE NO.
G-3-74	9

DRILLING COMPANY		COLLAR ELEVATION	BEARING OF HOLE FROM TRUE NORTH	TOTAL FOOTAGE	DIP OF HOLE AT collar	LOCATION OF HOLE IN RELATION TO A FIXED POINT ON THE CLAIM	MAP REFERENCE NO.	CLAIM NO.		
DATE HOLE STARTED	DATE COMPLETED	DATE LOGGED	LOGGED BY		ft		LOCATION (Tp., Lot, Con. OR Lat. and Long.)			
EXPLORATION CO., OWNER OR OPTIONEE		DATE SUBMITTED	SUBMITTED BY (Signature)		ft					
					ft				PROPERTY NAME	

FOOTAGE FROM TO		ROCK TYPE	DESCRIPTION Colour, grain size, texture, minerals, alteration, etc.	PLANAR FEATURE ANGLE	CORE SPECIMEN FOOTAGE +	YOUR SAMPLE NUMBER	SAMPLE FOOTAGE FROM TO		SAMPLE LENGTH	ASSAYS +	
328.5	489.0		(Cont'd.)								
			468.1' 1" qtz., 10°, trace py.								
			471.5-473.5' Carb. zone, 1% py.								
			472.5' 1/4" qtz., 10°, trace py.								
			482.0-484.0' Carb. zone, 1-2% py.								
			483.5' 4" qtz., 10°, trace py.								
			485.2' (2) 1/4" qtz., 20°, trace py.								
			486.0' 1/4" qtz., 15°, trace py.								
			488.5' 1/4" qtz., 55°, 2-3% py.								
489.0	491.0	Fn. gn'd, Mass. Uniform And.	Med. green, fine grained, massive, 3-5% diss. py., chlorite alteration.								
491.0			End of Hole.								

* For features such as foliation, bedding, etc., measured from the top edge of the core. Additional cards available. See Appendix #1.

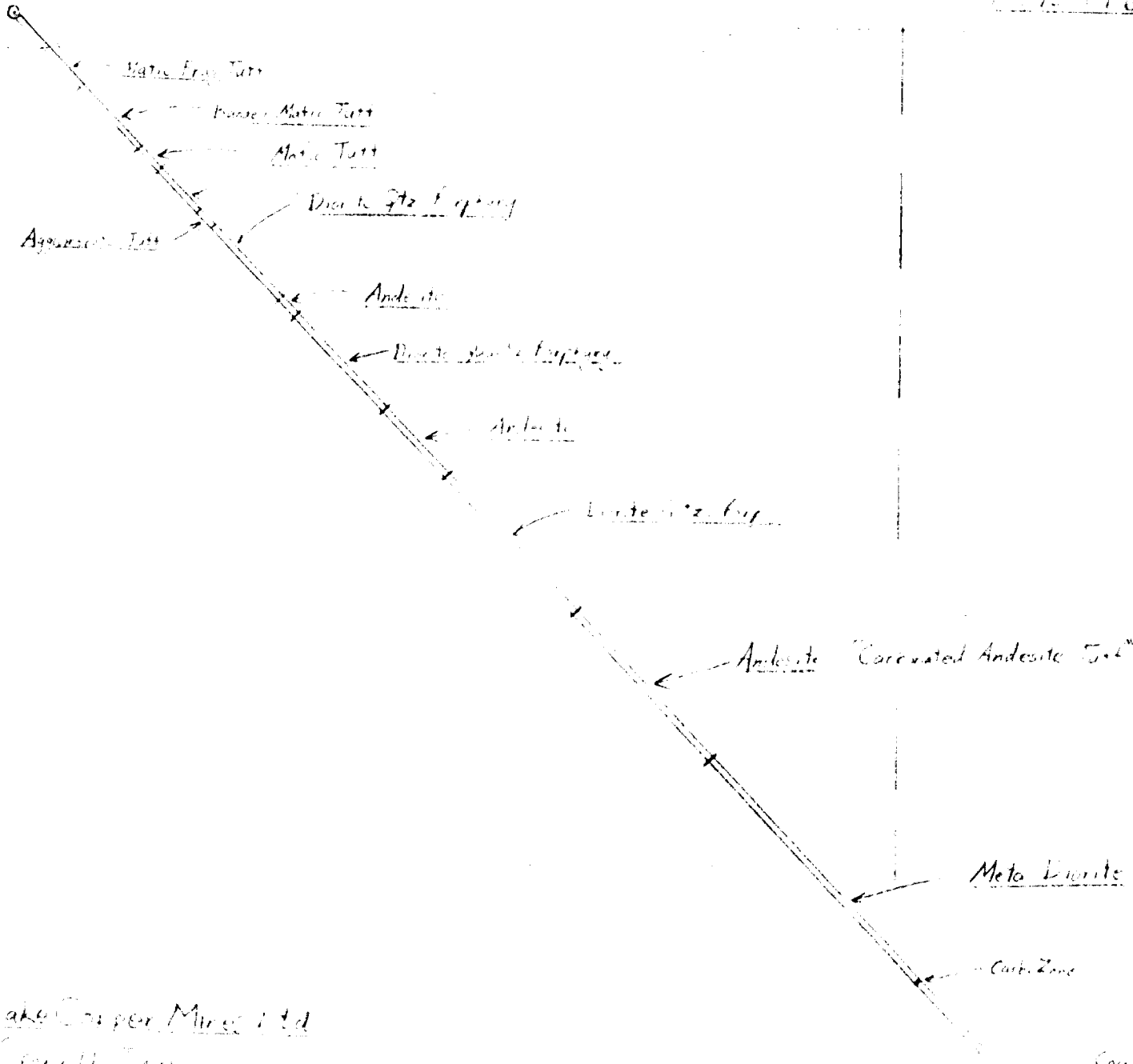
P 313 450

P 313 446

East

West

374



Card Lake Copper Mines Ltd
 1911
 1911

D. R. Best

1911
 491
 491