



42A04NW0151 14 KENOGAMING

010

Diamond Drilling

Township OF KENOGAMING

Report N<sup>o</sup>: 14

Work performed by: CANADIAN JOHNS MANVILLE

Claim N <sup>o</sup>	Hole N <sup>o</sup>	Footage	Date	Note
S 94767	# CR1	200'	Mar/59	
	# CR2	228'	Mar/59	
S 98162	# CR3	153'	Apr/59	
	# CR4	158'	Apr/59	
	# CR6	177'	Apr/59	
S 94765	# CR5	264'	Apr/59	

Notes:

# DRILL LOG

LOCATION:

DATE STARTED:

DATE COMPLETED:

TOTAL DEPTH:

PROPERTY: Crawford River Group - Kenogaming Township

HOLE NO: C. R. #1

SHEET NO: 2

GEOLOGICAL DESCRIPTION	FOOTAGE	REC.	TH. V.	FIBRE VEINS												
				1/32	1/16	1/8	1/4	1/2	3/4	1	1 1/4	1 1/2	1 3/4			
147' - 148' blocky ground - tight slip at 5°																
From 143'5" - 152'5" brown peridotite as before but becoming slightly coarser grained and faintly mottled giving a greenish brown effect - grades to a greenish peridotite																
152'5" - 156' slip contact at 25° to fine grained pyroxenite? - slightly serp'd. - minor pyrite mineralisation																
156' - 158' contact at 45° - along slip to a highly altered volcanic - containing a high percentage of chlorite and pyrite																
158' - 170' slip contact at 45° to a bedded cherty tuff - with bluish quartz bands and minor pyrite mineralisation																
158' - 159' section mineralized with seams of pyrite and pyrrhotite along the bedding planes																
170' - 172'5" definite dioritic rock becoming fine grained at each contact																
172'5" - 175' coarse hornblende diorite																
175' - 183' medium grained, semi-granular dark green slightly fractured volcanic? rich in hornblende - no visible bedding																
177' tight slip at 40°																
182'5" - 185' broken core - series of low angled tight slips																
183' - 190' dark green volcanic? with narrow hornblendes showing marked lamination at 65° - pyrite throughout - carbonate and chlorite alteration high in sections - quartz noted in sections.																
188' - 189' tight slips at 20°																
190' - 190'8" moderate slip at 60°																
190' - 194' coarser grained dioritic rock - extremely altered - contains pyrite mineralisation and chlorite alteration																
194' - 199' highly altered fine grained gabbro? - epidote mineralisation and minor quartz - weakly sheared throughout.																
199' - 200' contact at 45° to sediments - fine grained, greenish brown, narrowly bedded, no visible mineralisation - cherty sections.																
200' - END OF HOLE.																
		Logged by: F. J. Evalagh.														

# DRILL LOG

LOCATION: Detail Grid - 1485 Southwest on Ticket Line  
 17400W  
 DATE STARTED: March 25, 1959 PROPERTY: Crawford River Group - Kenogaming Township  
 DATE COMPLETED: April 2, 1959 HOLE NO: C. R. #2  
 TOTAL DEPTH: 228' SHEET NO: 1

GEOLOGICAL DESCRIPTION	FOOTAGE	REC.	TH. V.	FIBRE VEINS										
				1/2	1/4	1/8	1/16	1/32	1/64	1/128	1/256	1/512		
0 - 15' overburden, casing	0 - 15													
15' - 16'6" coarse grained mottled peridotite														
16'6" - 16'9" dike														
16'9" - 27'6" coarse grained mottled, brown weathered peridotite, disseminated magnetite;														
5 - 10% carbonate														
27'6" - 32' fine grained, light grey perid., carb fracture low in magnetite, slip at 31'5" - low angle														
32' - 35' dark brown perid. - few threads														
35' - 45' dark brown mottled perid. - disseminated magnetite; few threads, grading from dark brown peridotite to medium grained dark green perid.	35 - 45						4							
45' - 55' medium grained, dark green perid. grading into brown perid. at 47'; 10% carb.	45 - 55						3	7	1					
48'5" - 49' fault zone; carb and slip at 49'														
49' - 50' light serp'd. perid. - highly carbonated - 40%.														
50' - 55' dark brown mottled perid. massive - medium in magnetite (vein at 3/16" pod shaped), veining 20 - 30° - angle across (2 veins at 1/8" - 90° to core														
55' - 65' dark brown mottled perid. massive - magnetite - average														
65' - 76' dark brown mottled perid. - massive														
75 - 85' same as previous run														
85' - 95' dark brown mottled perid. - massive to														
89' - 89' - 90' strong shear; 90' - 95' dark perid - 5 - 10% carb - sheared from 94 - 95'														
95' - 105' sheared to 96'. Dark perid. medium grained to 101'. 101' - 102' light green serp. perid. sheared; 20% carb stringers; few hair veins; 102' - 105' dark medium perid. slightly sheared; carbonate few hair veins														
105' - 115' dark med. perid.; 5 - 10% carb. mag average														
115' - 125' dark medium perid. to 118'6". Threads at 116'; 1/4" vein of carb - angle 60° across core; 118'6" - 122' dark brown carb'd. perid.	115 - 125						1							
122' - contact. Pyroxenite to 124'. Stringers of magnetite high; 124' - 125'6" chlorite schist contact														
125' - 135' - from 125'6" - 132'6" silicious. Bedded tuffs. Pyrite on slips, disseminated pyrrhotite 3%; traces of chalcopyrite; 132'6" - contact; 132'6" - 135' chlorite schist; barren quartz stringers.														



# DRILL LOG

LOCATION: 3490 South on Line 36400 East (old grid)  
 DATE STARTED: April 13, 1959 PROPERTY: Crawford River Group - Kenogaming Township  
 DATE COMPLETED: April 16, 1959 HOLE NO: G. R. #5  
 TOTAL DEPTH: 264' SHEET NO: 1

GEOLOGICAL DESCRIPTION	FOOTAGE	REC.	TH. V.	FIBRE VEINS																
				1/2	1/4	1/8	3/16	1/4	5/16	3/8	1/2	5/8	3/4							
0 - 32' overburden, boulder clay and hard pan																				
32' - 59' light grey-green moderately carbonated chloritic volcanics - probably an acidic volcanic																				
37'5" - 39' core broken, slip zone at 10°																				
41' - 43' core broken, slip zone at 10° - 1 1/2 feet of core ground																				
44' - 48' same as 41 - 43 with 3 feet of core ground																				
52' - 55' core broken, tight slip zone at low angles																				
55' - 56' light green chloritic volcanics with minor carbonate																				
59' - 61' highly carbonated section																				
61' - 86' dark green-black dense basic-basaltic volcanic? with 15 - 20% carbonate - possibly a slightly serp'd. perid. - weakly sheared throughout, with fine pyrite on slip planes. Thin section -																				
72' - 75' core broken and sheared at low angles - carbonate alteration high																				
77' - 78' core broken - moderate slip zone at low angles																				
78' - 78 1/4" porphyritic dike rock - dark matrix with carbonated phenocrysts - highly altered pyroxenite?																				
78 1/4" - 82' sheared and carbonated - chloritic volcanic?																				
78 1/4" - 79' sheared section at 60°																				
85' - 86' core broken - low angled slip zone																				
86' - 90'8" fine grained, altered biotite lamprophyre? dike with minor pyrite mineralization																				
88'5" - 91'5" sheared at low angles - core broken																				
90'8" - 146' grey-green carbonated (20%) slightly serp'd. perid. - a faint banding throughout; slightly sugar texture; slightly sheared throughout																				
97'5" - 98' core broken - moderate shear at 30°																				
122' - 4" dark grey-black serp-rich in magnetite																				
126' - 127' core broken - moderate shearing																				
130' - 131' magnetite-rich section																				
134' - 135' moderate shearing at 15°																				
143' - core broken over 4" - moderate shear																				
145' - 146' core broken - tight slips at 30°																				
146' - 163' medium green, semi-granular moderately - highly serp'd. perid. carb content 5 - 10%; magnetite - average; weakly sheared throughout																				
148' tight slip at 15°																				
149' tight slip at 35°																				
154'5" - 155'5" core broken - shear zone at 25°																				
157' - 163' strong shear zone at 45° - 3 feet of core ground																				
163' - 201' medium green pyroxenite? - sheared and carbonated - interlocking crystal mesh resembling a hornblende.																				
166' - 168' core broken and ground - shear zone?																				



# DRILL LOG

LOCATION: 7400 South; 15400 West (Detail Grid)  
 DATE STARTED: April 18, 1959 PROPERTY: Crawford River Group - Kanogaming Township  
 DATE COMPLETED: April 21, 1959 HOLE NO: C. R. #6  
 TOTAL DEPTH: 177' SHEET NO: 1

GEOLOGICAL DESCRIPTION	FOOTAGE	REC.	TH. V.	FIBRE VEINS																
				1/32	1/16	1/8	3/16	1/4	5/16	3/8	7/16	1/2								
0 - 25' - overburden																				
25' - 59' medium green, slightly carbonated, chloritic volcanic with sections coarse grained, slightly schistose throughout, minor quartz - carbonate threads with pyrite mineralization.																				
25'5" - 26'5" slip zone at 10°																				
29'5" - 34' light grey feldspar porphyry with minor pyrite mineralization																				
42' - 43' weak shear at 55°																				
At 48' core broken - weak shear at 65°																				
52' - 53' core broken - tight slips?																				
53' quartz syenite injections?																				
57' - 57'5" core broken - slip zones?																				
55' - 59' volcanic becomes extremely coarse grained - almost dioritic																				
58'5" - 60' core broken, tight slip at 5°																				
59' - 62'6" interbedded volcanics and grey-brown sediments; bedding at 45° to core																				
62'6" - 68' grey-feldspar porphyry as above																				
68' - 72'3" grey-brown cherty tuffs with bedding at 60° to core - minor pyrite mineralization - intense drag folding																				
72'3" - 77' moderately - highly mineralized section with pyrrhotite, pyrite and minor chalcopyrite - siliceous sections																				
77' - 78' grey feldspar porphyry as above																				
78' - 80' moderately mineralized section as above in greenish brown siliceous sediments																				
80' - 83' dense fine grained brownish sediments?																				
83' - 86' grey feldspar porphyry as above																				
83' - 83'5" brownish sediments as above																				
83'5" - 97'5" moderately mineralized section with pyrrhotite, pyrite, minor chalcopyrite and sphalerite																				
87' - 88' grey feldspar porphyry as above																				
92' - 93' barren grey cherty section																				
97'5" - 104'5" brownish-green sediments with highly siliceous sections - barren of mineralization																				
102'5" - 103'5" highly mineralized section as above with 4" white quartz vein																				
104'5" - 106' grey feldspar porphyry as above																				
106' - 148' slightly mineralized section in dark green-black sediments (tuffs) - siliceous sections throughout																				
112' - 116' grey feldspar porphyry as above; the same for 117' - 118'																				
118' - 127' banded siliceous section mineralized with pyrrhotite, pyrite and minor chalcopyrite																				
119'5" - 122' grey feldspar porphyry as above.																				

# DRILL LOG

LOCATION:

DATE STARTED:

DATE COMPLETED:

TOTAL DEPTH:

PROPERTY: Crawford River Group - Kenogaming Township

HOLE NO: C. R. #6

SHEET NO: 2

GEOLOGICAL DESCRIPTION	FOOTAGE	REC.	TH. V.	FIBRE VEINS																
				$\frac{1}{32}$	$\frac{1}{16}$	$\frac{1}{8}$	$\frac{3}{16}$	$\frac{1}{2}$	$\frac{5}{16}$	$\frac{3}{8}$	$\frac{7}{16}$	$\frac{1}{2}$	$\frac{9}{16}$							
125'5" - 127' grey feldspar porphyry as above																				
130' - 135'3" moderate sulphide mineralization in green black tuffs - siliceous banding																				
134' - 134'8" grey feldspar porphyry as above; also 135'3" - 139' and 139'5" - 143'5".																				
143'5" - 145'5" - sheared section in dark green black mineralized tuffs																				
148' - 157'5" grey-green-brown thinly bedded sediments - barren of sulphide mineralization - bedding at 40° to core																				
157'5" - 177' interbedded sediments and dark, dense, green-black volcanics																				
168' - altered section - slip at 15°																				
177' - END OF HOLE.																				
		Logged by: F. J. Evelygh.																		



CRAWFORD RIVER

SEWELL TWP  
KENOGAMING TWP.

TWP LINE

10950

94763

94765

94767

94761

94764

94766

98162

98164

98163

108511

98167

98165

97110

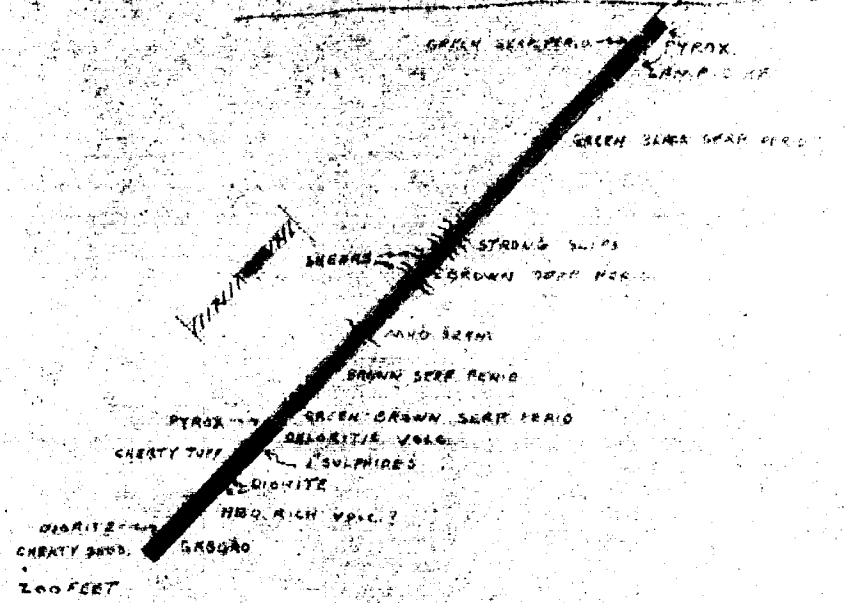
98168

97109

97108

SKETCH SHOWING CLAIM GROUP  
AND  
LOCATION OF D.D. HOLES  
in  
KENOGAMING TWP.  
Scale 1" = 1320'  
CANADIAN JOHNS-MANVILLE Co. LTD

ATWISTON LAKE



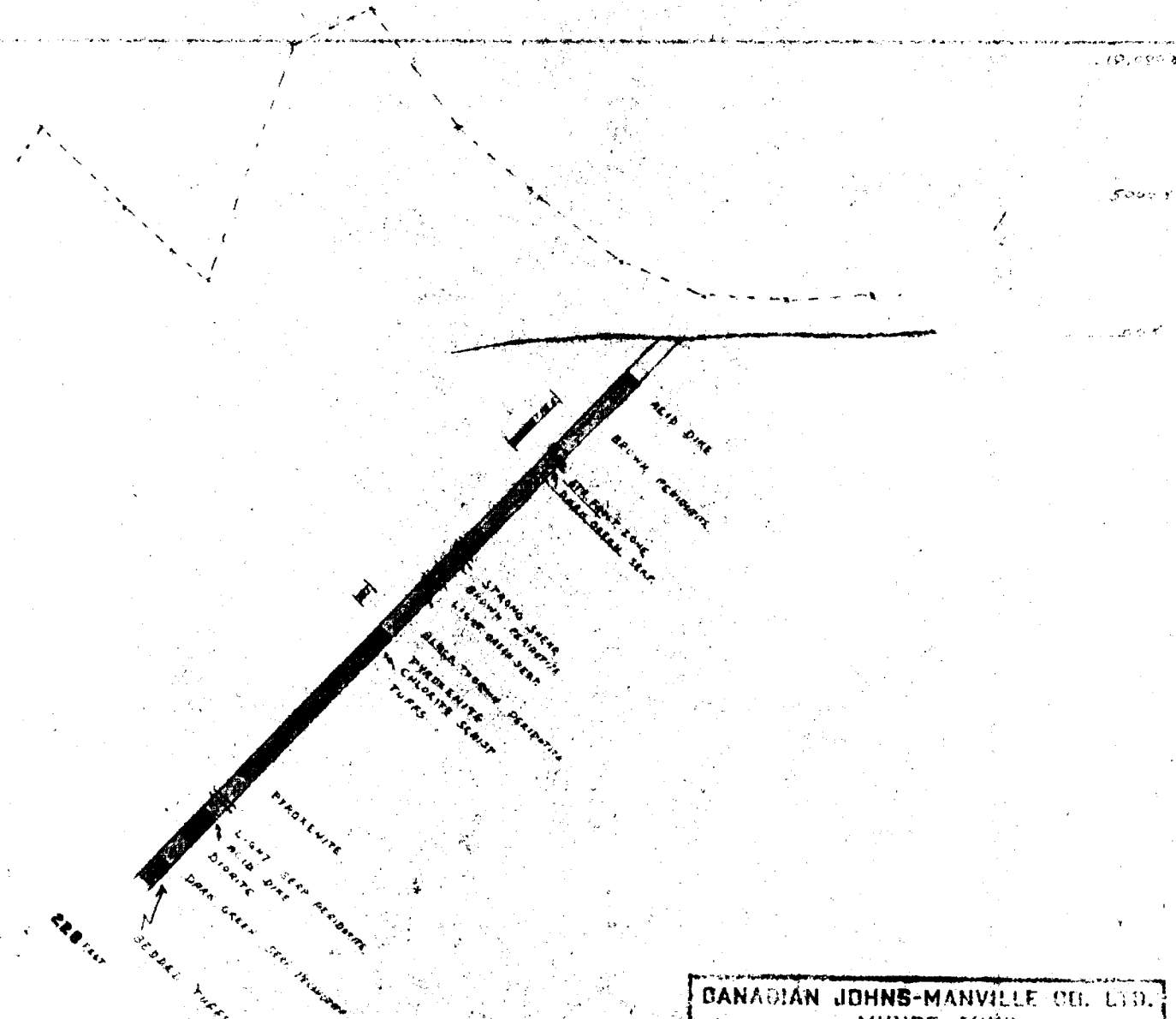
CANADIAN JOHNS-MANVILLE CO. LTD.  
 MATHESON MUNRO MINE ONTARIO  
 SECTION - HOLE C.R. #1  
 MASSON'S OVER GROUP  
 04605. 9+55W 217-45' BEARING CASE  
 SCALE: 1" = 50' DATE 3/13/59  
 DRAWN F.J.E.  
 CHECKED F.J.E.  
 APPROVED F.J.E.

# DRILL LOG

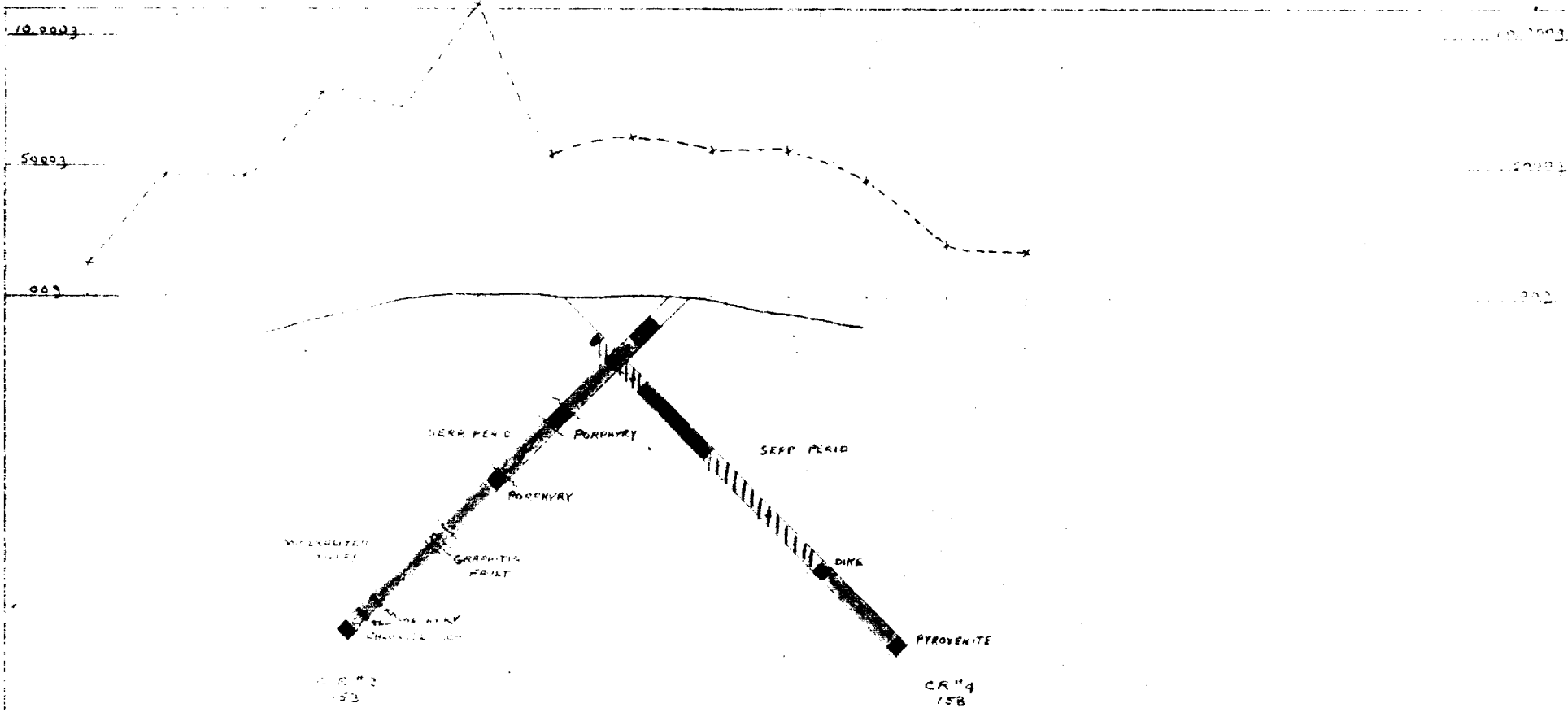
LOCATION: Detail Grid; Q460' Southeast on picket line  
 8400 West  
 DATE STARTED: March 19, 1959 PROPERTY: Crawford River Group - Kenogaming Township  
 DATE COMPLETED: March 24, 1959 HOLE NO: C. E. #1  
 TOTAL DEPTH: 200' SHEET NO: 1

ELEVATION of COLLAR: Surface  
 ELEVATION of BOTTOM:  
 BEARING: S45°E  
 DIP: -45°

GEOLOGICAL DESCRIPTION	FOOTAGE	REC.	TH. V.	FIBRE VEINS												% SL. F.	% Mass F.	% Total F.	Vein Ang.	% MAG.	% PYR.	Rock S.	REMARKS (VEIN TYPE)
				$\frac{1}{32}$	$\frac{1}{16}$	$\frac{1}{8}$	$\frac{3}{16}$	$\frac{1}{4}$	$\frac{5}{16}$	$\frac{3}{8}$	$\frac{7}{16}$	$\frac{1}{2}$	$\frac{9}{16}$	$\frac{5}{4}$	$\frac{11}{16}$								
0 - 7' casing																							
7' - 13' light green, mottled slightly serp'd. pyroxenite - fine to medium grained with a high percentage of magnetite and minor pyrite mineralization.																							
8' - 10' tight slip at 5°																							
13' - 18' 5" dark green moderately serp'd. granular peridotite high in magnetite with 5 - 10% carbonate																							
18' 5" - 20' 5" moderately carbonated (50%) light grey-green pyroxenite - high in magnetite																							
20' 5" - 26' light grey black dike with hornblende and minor pink feldspar crystals - fine grained - laugrophyre.																							
26' - 75' dense black peridotite - moderately serpentized - mottled appearance - 5 - 10% carbonate - carb. fringes - relatively massive throughout - shows brownish flecks - possibly altered pyroxenes (brown serp'd, perid.) -																							
34' tight slip with slip serp at 30°																							
40' broken core over 2" slip?																							
46' - 47' tight slips at 40°																							
48' - 51' highly altered section																							
51' - 52' core broken - slip zones at low angles																							
61' - 63' light green, mottled section with moderate slips at 50° - carb. increases to 30% and is pronounced around individual xls.																							
From 75' - 121' finer grained more pronounced brownish perid. - mottled effect lacking except in scattered short sections - magnetite content average; carb 5 - 15%.																							
82' - 83' strong slip zone at 15°																							
From 82' blue carbonate alteration as threads are predominant in the core at varying angles																							
84' strong slip zone at 65°																							
86' - 87' tight slips at low angles																							
89' - 2" ground core - slip zone?																							
93' 5" - 95' 2" strong shear zone with mud seam 2" wide																							
98' 5" - 100' 2" strong shear zone at 45°																							
105' tight slip at 5°	0 - 110	110																					
110' altered over 4" - slip? at 30°	110 - 120	9.9	-	1														0	AV	SF	--		
115' 5" tight slip at 15°																							
119' - 121' fault zone - 2" ground core	120 - 130	9.9	-																AV	SF	--		
121' - 143' 5" fine grained dense brown serp'd. peridotite	130 - 140	9.8	-	2															AV	SF	--		
130' tight slip at 30°																							
136' - 3" broken core - strong slip at 30.	140 - 150	9.8	3	1															AV	MF	--		



**CANADIAN JOHNS-MANVILLE OIL LTD.**  
 MATHeson MUNGG MINE ONTARIO  
 SECTION - HOLE CR #2  
 CRAWFORD RIVER GROUP  
 17855 17400W DIP 45° BEARING S 45° E  
 SCALE 1" = 50' DATE 3/4/59  
 DRAWN R.F.K. KENOGAMING  
 CHECKED TWA  
 APPROVED F.J.E.



**CANADIAN JOHNS-MANVILLE CO. LTD.**  
**MATHESON MUNRO MINE DISTRICT**  
**SECTION HOLES # CR-3 & 4**  
 #3 - 5160'S 32100W DIP 45°  
 #4 - 6100'S 32100W DIP 45°  
 BEARING #33.45°E  
 BEARING #4 N 45°W

SCALE: 1" = 50'

DRAWN F. J. E.	REVISION
TRACED	
APPROVED F. J. E.	

515

# DRILL LOG

LOCATION: Line 32+00W detail grid; 5+60' South

DATE STARTED: April 4/59

PROPERTY: Crawford River Group - Kenogaming Township

DATE COMPLETED: April 7/59

HOLE NO: C.R. #3

TOTAL DEPTH: 153'

SHEET NO: 1

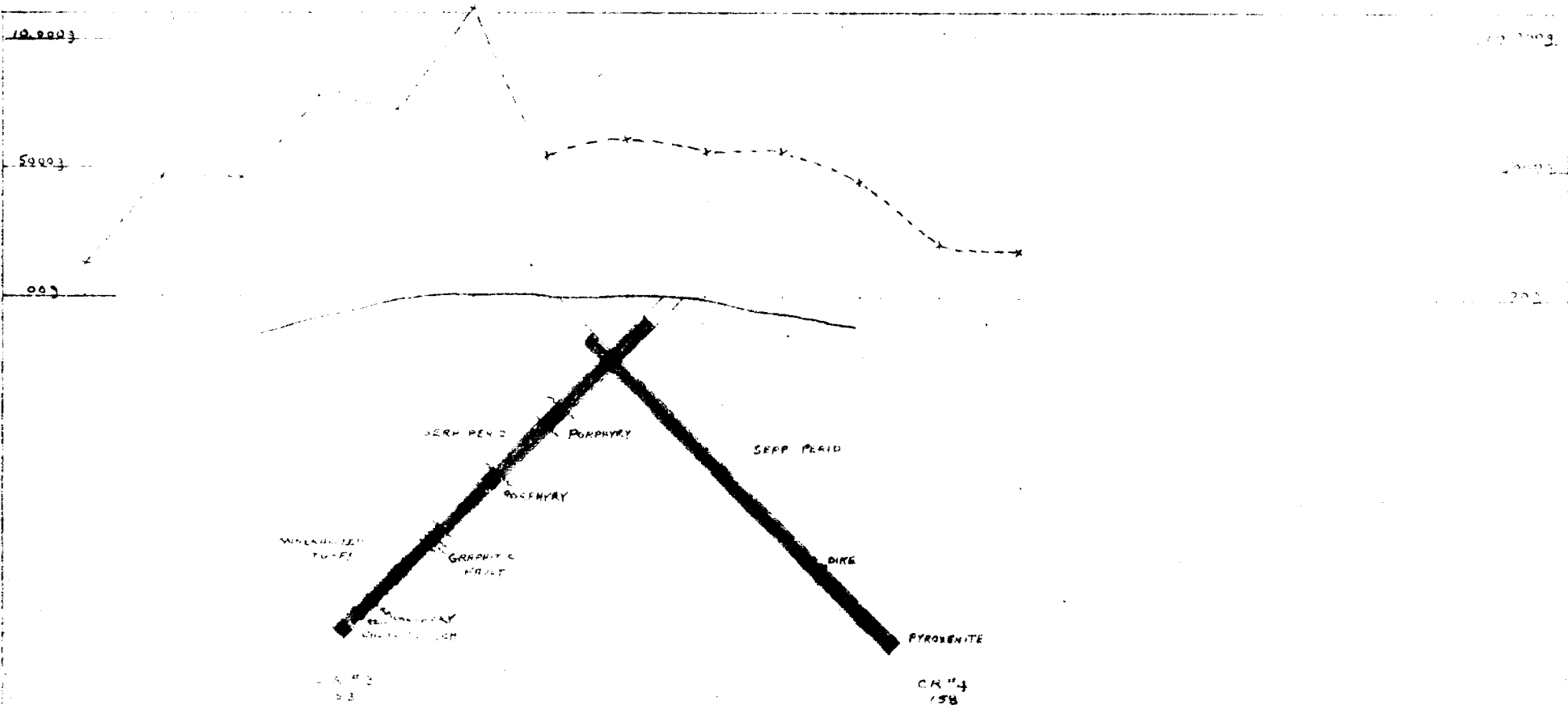
ELEVATION of COLLAR: Surface

ELEVATION of BOTTOM:

BEARING: S45°3'

DIP: -45°

GEOLOGICAL DESCRIPTION	FOOTAGE	REC.	TH. V.	FIBRE VEINS														%SL. F.	%MassF	%TotalF	VeinAng	%MAG	%PYR	Rock S	REMARKS (VEIN TYPE)
				1/32	1/16	1/8	3/16	1/4	5/16	3/8	7/16	1/2	9/16	5/8	11/16	3/4	7/8								
0 - 11' casing																									
11' - 105'6" dark green, dense slightly mottled highly serp'd. perid - 5 - 10% carbonate Fibre is harsh but of good quality	11 - 20	8.3 L				7	9													45	H	SF	Compos.		
15' tight slip at 40°	20 - 30	9.7 L																			AV	SF	--		
18' - 19' core broken - blocky ground	30 - 153																								
29'8" - 4" broken core - shear?																									
From 39' becoming lighter grey-green in colour																									
38' - 39' strong slip zone at 10°																									
42' - 45' strong slip zone with slips at 25°																									
50' - 51' carbonated section 20 - 25 %																									
51' core ground over 3" - shear zone?																									
51' - 57' grey-feldspar porphyry dike																									
57' - 59' strong carbonated shear zone at 60°																									
From 59' becoming dark green, dense, highly serp'd. perid.																									
61' tight slip at 10°																									
65' core broken - slip zone at 5°																									
71' - 73' light grey green, altered section - several tight slip zones at 30°																									
80' - 81' carbonate shear zone-core broken & ground																									
81' - 85' light grey, feldspar porphyry dike																									
87'6" tight slip at 20°																									
From 91' grey-green mottled slightly to moderately serp'd. perid, carb content 5 - 10%.																									
94' - 96' coarsely mottled section																									
105'6" sheared contact - 1 foot of core lost or ground; sheared at 45°: 105'6" - 149' light grey-green, thinly bedded tuffs - with mineralized siliceous sections and narrow bands of chlorite schist - sections showing narrow cherty bands; drag folding noted throughout; bedding at 45 - 60° Mineralization consists of pyrrhotite, pyrite, sphalerite, galena? and minor traces of chalcopyrite.																									
106'6" - 119' mineralized siliceous section - note 7' ground in graphitic fault zone																									
123' - 4" highly siliceous with sulphide mineralization																									
124'6" - core broken - slip zone?																									
127'5" - 127'6" siliceous bands throughout containing highly disseminated sulphide mineralization																									
129'6" - 133'2" same as above; also 134'2" - 149'																									
132' - 133' core broken - moderate slip zones																									
At 137' - 4" dike of grey feldspar porphyry at 50°																									
Note increase in cherty zones from 139'																									
143' - 143'6" grey-feldspar porphyry dike at 75°																									
149' - 153' highly altered volcanics - chlorite schist																									
153' - END OF HOLE																									



<b>CANADIAN JOHNS-MANVILLE CO. LTD.</b>	
MATHESON MUNRO MINE LTD.	
SECTION HOLES # CR-344	
#3 - 5+60'S	32+00W DIP 45°
#4 - 6+00'S	32+00W DIP 45°
BEARING #3S 45°E	
BEARING #4N 45°W	
SCALE: 1" = 50'	DATE: 7/2/57
DRAWN F. J. E.	REVISIONS
CHECKED	
APPROVED F. J. E.	

# DRILL LOG

LOCATION: Line 32400N; 6400 SOUTH

ELEVATION of COLLAR: Surface

DATE STARTED: April 8/59

PROPERTY: Crawford River Group - Kenogaming Twp.

ELEVATION of BOTTOM:

DATE COMPLETED: April 11/59

HOLE NO: C. R. #4

BEARING: N45°W

TOTAL DEPTH: 158'

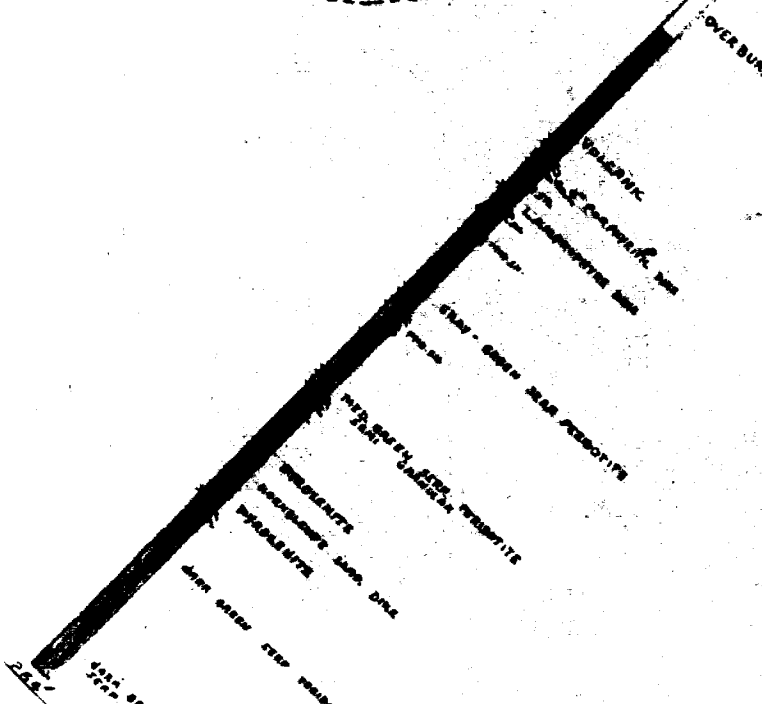
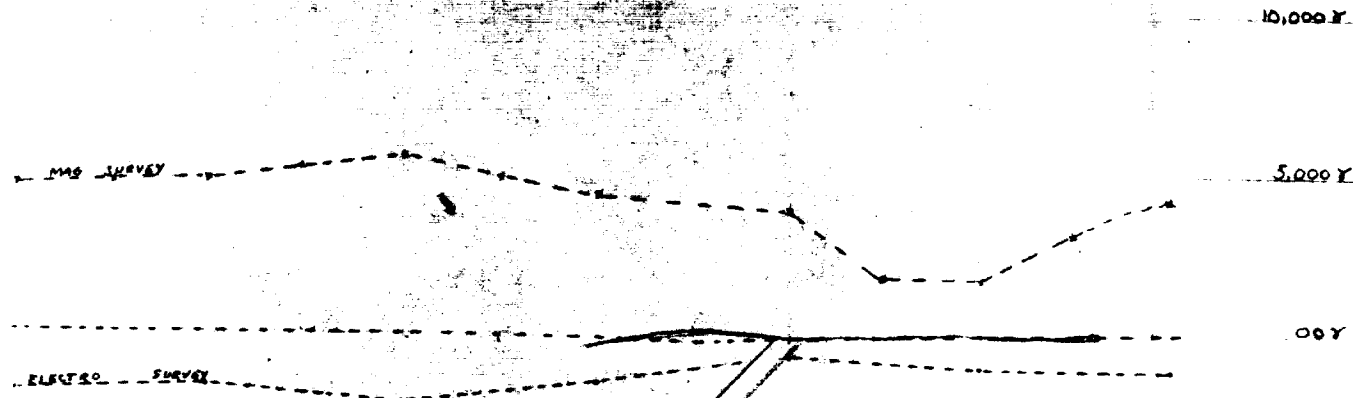
SHEET NO: 1

DIP: -45°

GEOLOGICAL DESCRIPTION	FOOTAGE	REC.	TH. V.	FIBRE VEINS											%SL. F.	%MassF	%TotalF	VeinAng	%MAG	%PYR	Rock S	REMARKS (VEIN TYPE)			
				$\frac{1}{32}$	$\frac{1}{16}$	$\frac{1}{8}$	$\frac{3}{16}$	$\frac{1}{4}$	$\frac{5}{16}$	$\frac{3}{8}$	$\frac{7}{16}$	$\frac{1}{2}$	$\frac{9}{16}$	$\frac{5}{8}$									$\frac{11}{16}$	$\frac{3}{4}$	$\frac{7}{8}$
0 - 18' casing																									
18' - 143' dark green, dense highly serp'd. perid. 18 - 20	18 - 20	1.9	-																			H	SF	--	
5% carbonate alteration; magnetite - high. Rock is hard and brittle - slightly fractured to massive throughout	20 - 30	9.8	L			1																45	H	SF	--
19' - 19'6" and at 30' core broken - blocky ground 33' tight slip at 10°	30 - 40	9.8	L	1	1																	45	H	SF	--
33' - 34' core broken - blocky ground	40 - 50	9.8	L	5	3													5	80			H	SF	--	
35' moderate slip at 70°	50 - 60	9.7	L	7	1																	40	H	SF	--
54' tight slip at 50°	60 - 70	9.8	L	5	2																	45	H	SF	--
54'5" - 55'5" tight slip at 5°	70 - 80	9.7	L	5																		85	H	SF	--
From 64' peridotite shows pronounced mottling - mottled dark green moderately to highly serp'd.	80 - 90	9.6	L	4																		80	H	SF	--
75' - 3" broken core - slip zone	90 - 100	9.8	L	4																			H	SF	--
79' tight slip at 35° and at 81'5" tight slip at 30°	100 - 110	9.8	L	6																			H	SF	--
90' core broken - blocky ground	110 - 120	9.8	L	5																			H	SF	--
From 90' mottling extremely fine	120 - 158																								
93' tight slip at 20°																									
98' - 3" broken core - slip?																									
116' - 117' core broken - tight slip zone at 10°																									
123' - 124'5" light grey siliceous dike - no visible mineralization																									
132'5" - 133'5" banded brown perid. - alternating white carb bands																									
133'5" - 138' semi-banded dark green moderately serp'd. perid. - bands comprised mainly of calcite																									
141' - tight slip at 5°																									
143' - 154' grey-green banded perid. - gradational to highly altered pyroxenite - carb 5 - 15%																									
145'5" and 148' tight slip at 25° & 30° respectively																									
153' - 154' core broken - slip zones at low angles																									
154' - 158' highly altered, medium grained, grey-green pyroxenite																									
157' - 158' moderate slip zone at 25°																									
158' - END OF HOLE																									

Logged by: F. J. Evelegh.



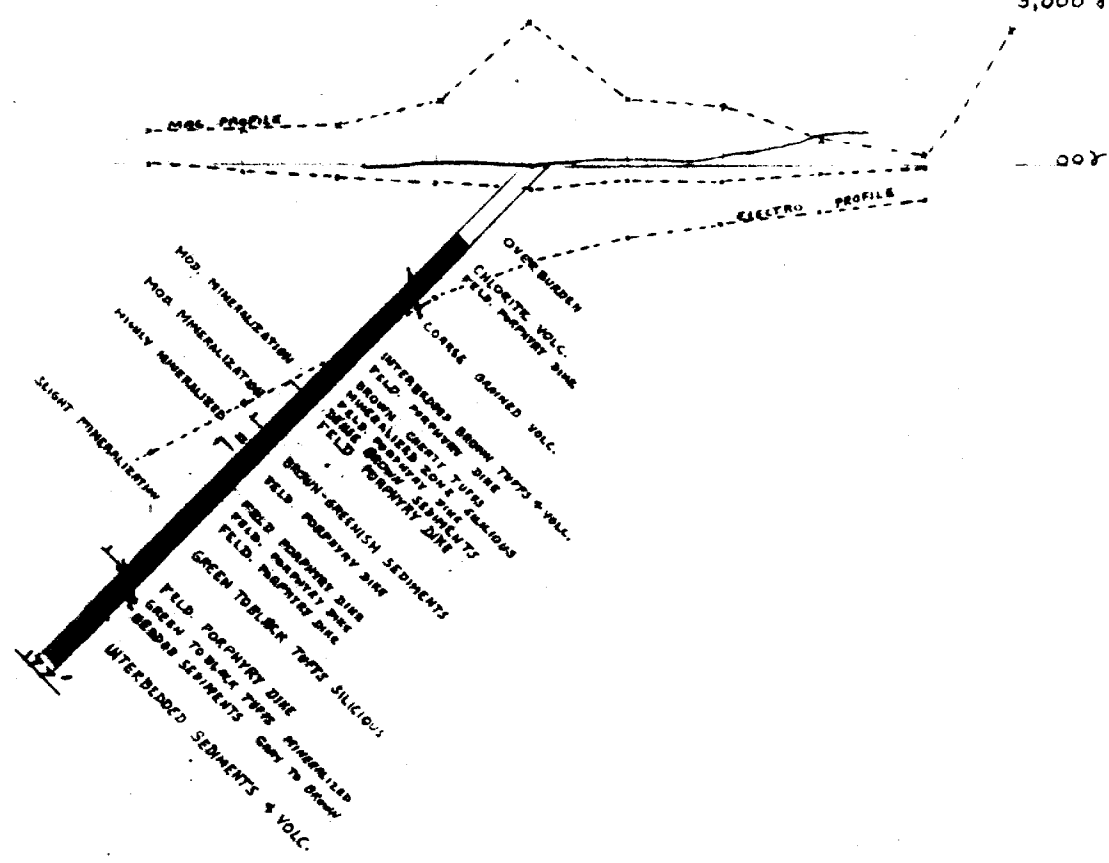


<b>CANADIAN JOHNS-MANVILLE CO. LTD.</b>	
MATHESON MUNRO MINE ONTARIO	
SECTION - HOLE # CR-5	
CRAWFORD RIVER GROUP	
3+90'S -36+00E DIP 45° BEARING S°	
SCALE 1"=50'	DATE MAY 14/59
DRAWN R.F.K.	KENNEDY T.W.P.
TRACED	
APPROVED F.J.E.	

10,000 r

5,000 r

00r

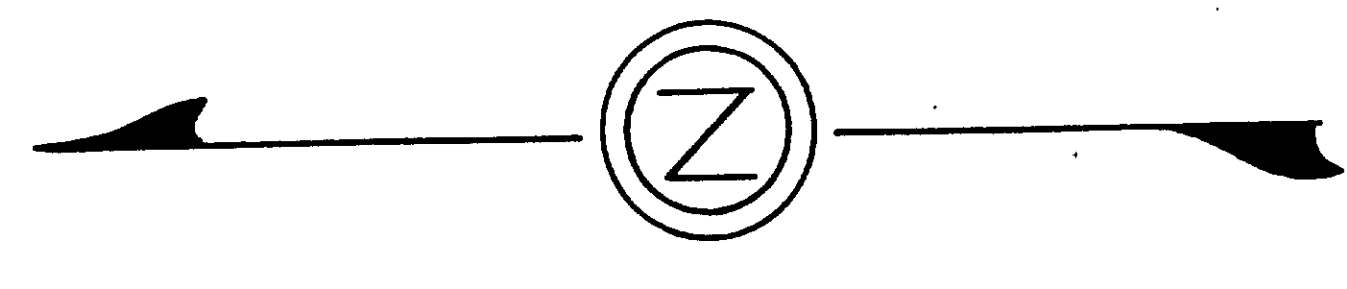


**CANADIAN JOHNS-MANVILLE CO. LTD.**  
 MATHESON MUNRO MINE ONTARIO  
 SECTION HOLE # CR - 6  
 CRAWFORD RIVER GROUP  
 7+00S 15+00W DIP 45° BEARING S45°E  
 SCALE 1"=50' DATE MAY 14/59

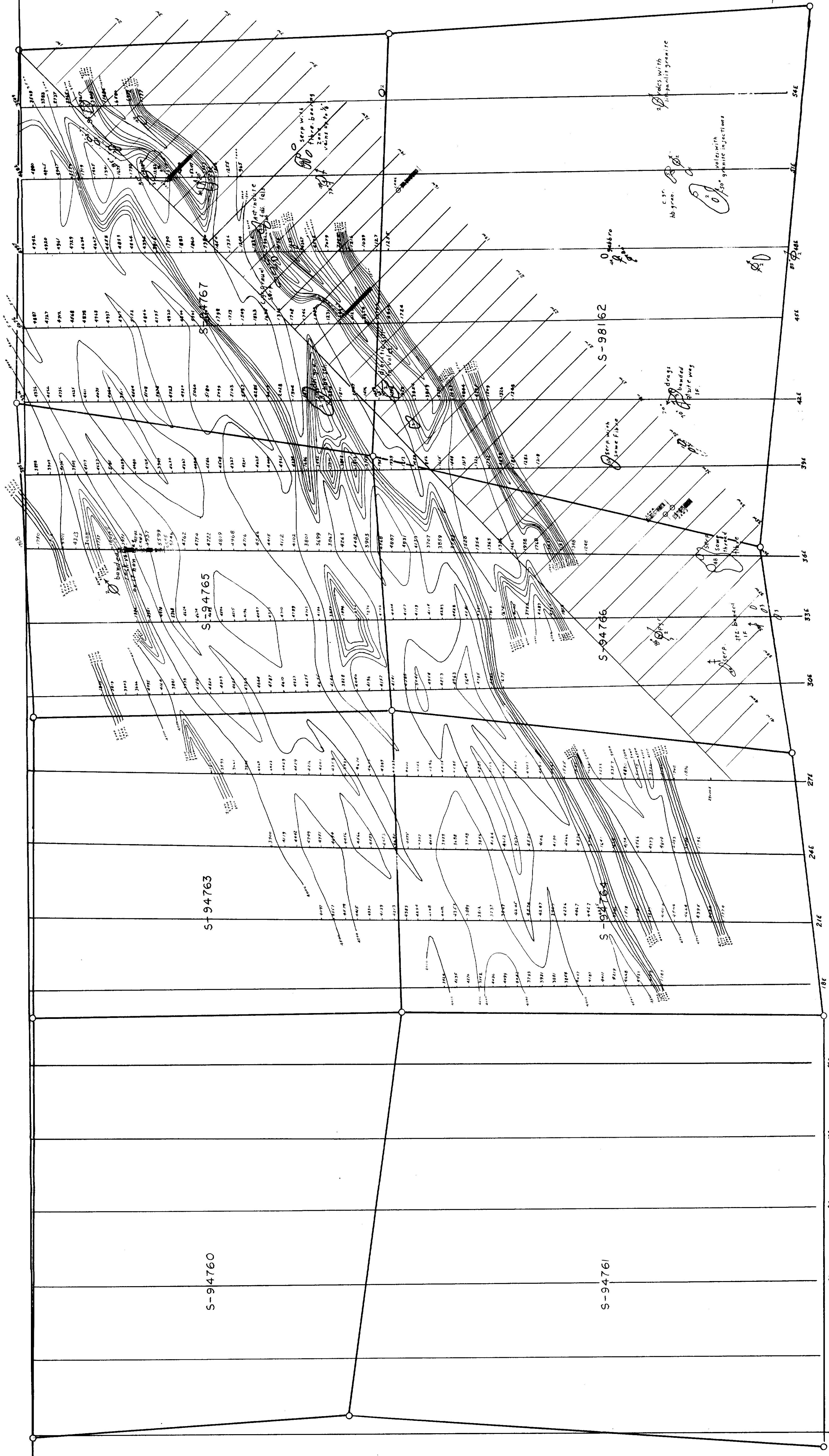
DRAWN R.F.K.	KEMOGAMING TWP.
TRACED	
APPROVED F.J.E.	

504

BASE LINE N-2  
SEWELL TWP.  
KENDOGAMING TWP.



AKWESKA LAKE



**SYMBOLS**

- DEDUCED GEOLOGICAL CONTACT
- TOPOGRAPHIC CONTOUR
- PALEONTOLOGICAL CONTOUR
- ROCK OUTCROP

**LEGEND**

- 4A GABBRO/INCL POSSIBLE MATAHEWAN DIABASE
- 2 HORNBLENDE-DIORITE
- 4B SLAPENTINE
- 3 IRON FORMATION
- 7 SCHISTS OF MAINLY SEDIMENTARY DERIVATION
- 5 LIGHT COLOURED DYKES OR SILL ROCKS, INCL. FELDSPAR PORPHYRY

