

42A05NE0156 17 TURNBULL

010

Diamond Drilling

Township of TURNBULL

Report NO: 17

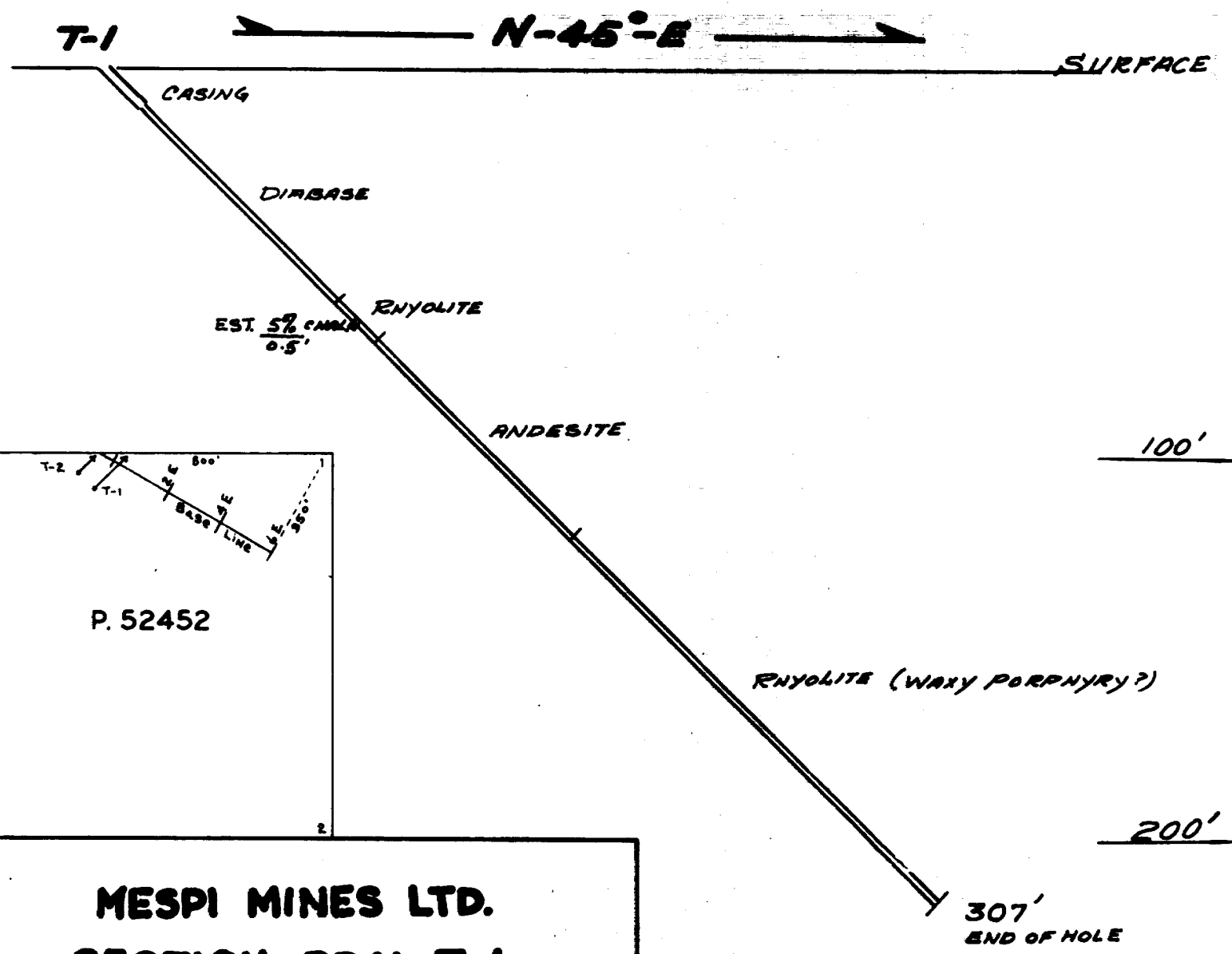
Work performed by: Mespri Mines

Claim NO	Hole NO	Footage	Date	Note
P 52452	T-1	307.0'	Mar/64	
	T-2	302.0'	Mar/64	

Notes:

P 51644

TURNBULL TWP.



MESPI MINES LTD.
SECTION D.D.H. T-1
TURNBULL TWP. CLAIM P.52452

SCALE 1"=40' APRIL 1964
C. C. Kereplian

P. 52452

SURFACE

N-45°-E

CASING

DIABASE

RNYOLITE

EST. 5% CHALK / 0.5'

ANDESITE

100'

RNYOLITE (WAXY PORPHYRY?)

200'

307'
END OF HOLE

DIAMOND DRILL HOLE RECORD, DDH No 7-1

 PROPERTY Turnbull Twp.

 CLAIM P. 52452

 SHEET No. 1

LATITUDE _____ BEARING N 45° E STARTED March
 DEPARTURE _____ DIP. 45° COMPLETED March 22nd, 1964
 ELEVATION _____ HORIZ. _____ VERT. _____ DEPTH 307 ft.

 DRILLED BY Continental Diamond Drill Co.

DEPTH - FEET	FORMATION	SAMPLE NO.	FROM	TO	WIDTH	VALUES				ECONOMIC GEOLOGY MINERALIZATION
						Cu	Ni	Ag	Au	
0-14.0	Casing									
14.0-85.6	<u>Diabase dyke?</u> medium to coarse grained with diabasic texture-40% Ferrromagnesian (amphibole) 10% magnetite with ilmenite, 48% laths of plagioclase (labradorite?) 2% pyrite. chilled contact at 85.6 ft.									
85.6-99.8	<u>Throchite</u> (or qtz. monzonite porphyry). A fault Breccia occurs at 92.6-93.1 carrying quartz and chalcocopyrite.	<u>CK #3</u>	92.6	93.1	0.5		Nil		Trace	Quartz Vein Breccia with 5% chalcoc and minor pyrite and pyrrhotite.
99.8-171.9	<u>Andesite</u> , chloritized amphibolized fine to medium grained (may also be old altered gabbro)									
171.9-306.8	<u>Massy Quartz porphyry</u> Highly altered									

ENGINEER: C. J. Kurepliv

DIAMOND DRILL HOLE RECORD, DDH No T-1

 PROPERTY Turnbull Twp.

 CLAIM P.52452

 SHEET No. 2

LATITUDE _____

 BEARING N-45°-E

 STARTED March

DEPARTURE _____

DIP. _____

 COMPLETED March 22nd, 1964

ELEVATION _____

HORIZ. _____ VERT. _____

 DEPTH 307 ft.

 DRILLED BY Continental Diamond Drill Co.

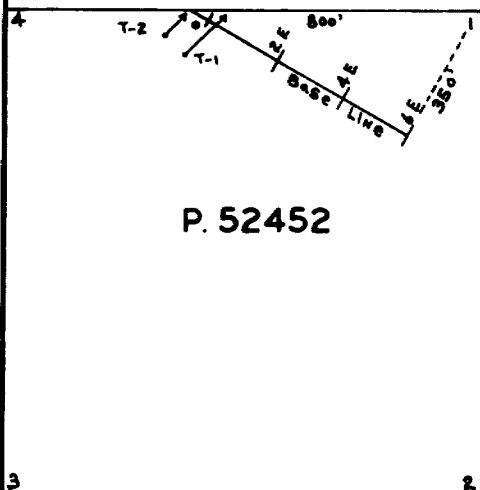
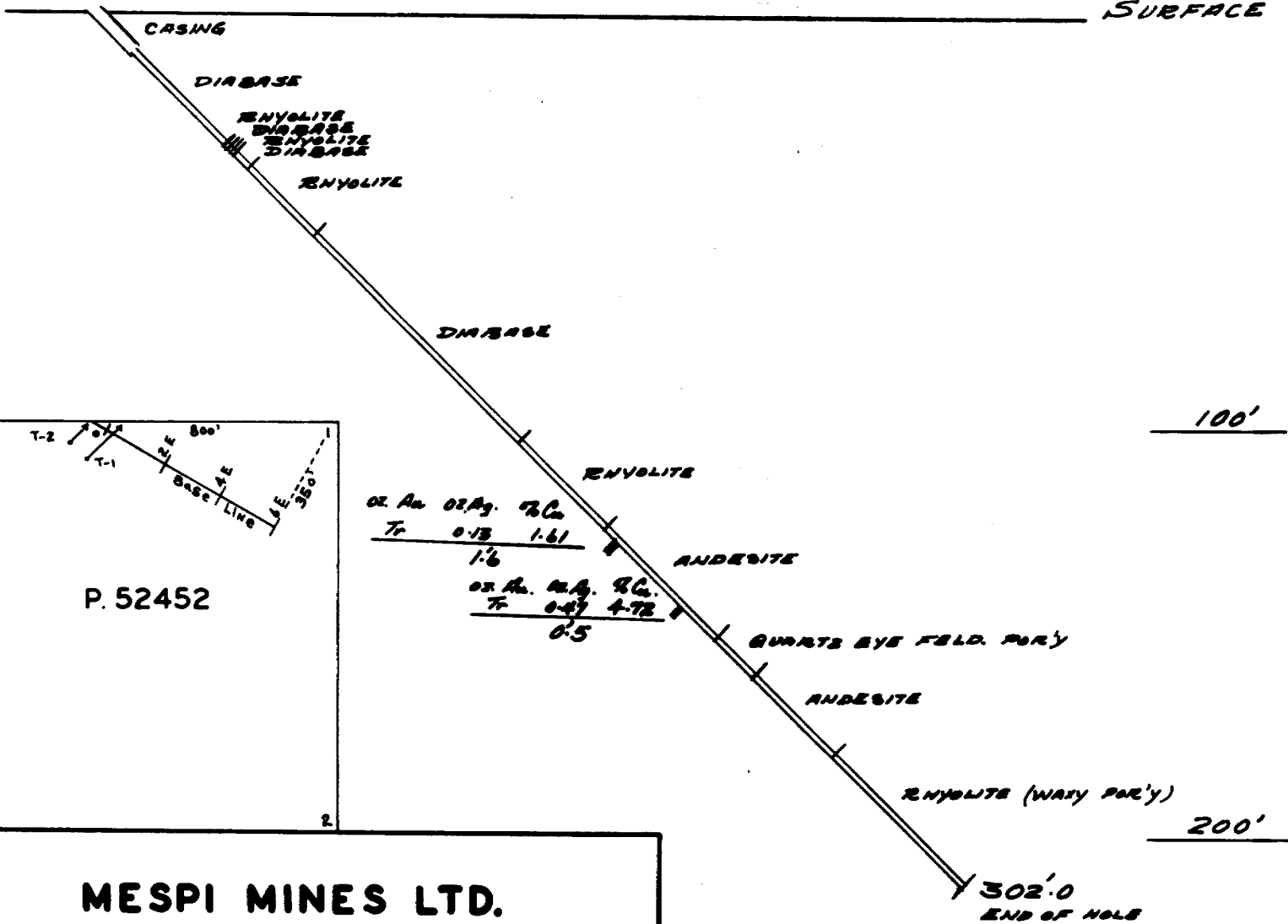
DEPTH - FEET	FORMATION	SAMPLE NO.	FROM	TO	WIDTH	VALUES				ECONOMIC GEOLOGY MINERALIZATION
	to Quartz and sericite and schistose									
	the rock is generally light colored									
	and yellowish.									
	Some narrow Quartz stringers carry									
	chalco at 209'.0-210 and at 229'.8									
	306.8 End of hole.									
	Acid test @ 200'									
	Read angle Corrected angle									
	-51°									

 ENGINEER: C. J. Kurylew

T-2

N-45°E

SURFACE



P. 52452

MESPI MINES LTD.
SECTION D.D.H. T-2
TURNBULL TWP. CLAIM P.52452

SCALE: 1"=40.0

APRIL, 1964.

C. C. Kierulff

DIAMOND DRILL HOLE RECORD, DDH No 1-2

 PROPERTY Turnball Twp.

 CLAIM P. 52452

 SHEET No. 3

LATITUDE _____

 BEARING N 45° E

 STARTED March 23rd, 1964.

DEPARTURE _____

 DIP. 45°

COMPLETED _____

ELEVATION _____

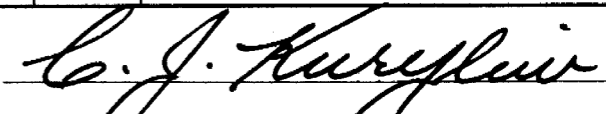
HORIZ. _____ VERT. _____

 DEPTH 302'.0

 DRILLED BY Continental Diamond Drill Co.

DEPTH - FEET	FORMATION	SAMPLE NO.	FROM	TO	WIDTH	VALUES				ECONOMIC GEOLOGY MINERALIZATION
						Cu	Ni	Ag	Au	
0-12.0	Casing									
12.0-45.5	<u>Diabase dyke?</u> - Gabbroic rock with dia- basic texture, grain size 1-2 mm. Comp: -40% Ferromagnesian -chiefly amphibole 10% magnetite with ilmenite 45% plagioclase laths of Labradorite contacts at 60% to core axis 2% pyrite.									
45.5-46.0	<u>Rhyolitic volcanic</u> - Brecciated pinkish highly siliceous.									
46.0-46.8	<u>Gabbro</u> or fine grained diabase, a tongue intrusion, with chilled con- tacts.									

ENGINEER:



DIAMOND DRILL HOLE RECORD, DDH No 1-2

 PROPERTY Turnball Twp.

 CLAIM P.52452

 SHEET No. 4

LATITUDE _____

 BEARING N45°E

 STARTED March 23rd, 1964.

DEPARTURE _____

 DIP. 45°

COMPLETED _____

ELEVATION _____

HORIZ. _____ VERT. _____

 DEPTH 3021.0

 DRILLED BY Continental Diamond Drill Co.

DEPTH - FEET	FORMATION	SAMPLE NO.	FROM	TO	WIDTH	VALUES				ECONOMIC GEOLOGY MINERALIZATION
						Cu	M	Ag	Au	
53.8-75.6	<u>Rhyolite - Fine grained and fractured fine grained spheruletic bands suggest pillow rims?</u>									
75.6-106.7	<u>Diabase Dyke contact phase. Fine to medium grained.</u>									
106.7-138.0	<u>Gabbro or Diabase Dyke same composition as at 121.0 - 451.0, diabasic texture.</u>									
138.0-146.3	<u>Gabbro - Diabase Dyke fine grained chilled contact phase.</u>									

 ENGINEER: C. J. Kuyflin

DIAMOND DRILL HOLE RECORD, DDH No 1-2

 PROPERTY Turnbull Twp.

 CLAIM P.52452

 SHEET No. 5

LATITUDE _____ BEARING N-45°-E STARTED March 23rd, 1964
 DEPARTURE _____ DIP. 45° COMPLETED _____
 ELEVATION _____ HORIZ. _____ VERT. _____ DEPTH 302.0

 DRILLED BY Continental Diamond Drill Co.

DEPTH - FEET	FORMATION	SAMPLE NO.	FROM	TO	WIDTH	VALUES				ECONOMIC GEOLOGY MINERALIZATION
						Cu	Ni	Ag	Au	
146.3-176.5	<u>Rhyolite - pinkish to light yellowish grey, fine grained blocky, fractured chiefly Quartz - sericite (may be Quartz sericite dyke.)</u>	<u>CK-1</u>	<u>181.2</u>	<u>182.8</u>	<u>1.6</u>	<u>1.61</u>	<u>0.13</u>	<u>0.13</u>	<u>Trace</u>	<u>Quartz stringers at 45° to core make up 20% of sample carrying about 3% chalcopyrite in sample. One 1/2 inch wide band at 25° to core axis is at least 1/3 pure chalcopyrite. The wall rock is chloritic, only minor pyrite and pyrrhotite present.</u>
176.5-215.8	<u>Andesite? chloritized and amphibolized with sharp contacts at 60° to core. (may be a highly altered old gabbro??)</u>									
215.8-228.0	<u>Quartz-eye porphyry dyke - Quartz-diorite composition, with Quartz eyes 1-2 mm. size some patches of chlorite rock.</u>									
228.0-256.4	<u>Andesite - altered chloritized and amphibolized. (May be highly altered</u>									

 ENGINEER: C. J. Kuryshin

DIAMOND DRILL HOLE RECORD, DDH No T-2

 PROPERTY Turnbull Twp.

 CLAIM P. 52452

 SHEET No. 6

LATITUDE _____

 BEARING N-45°-E

 STARTED March 23rd, 1964.

DEPARTURE _____

 DIP. 45°

COMPLETED _____

ELEVATION _____

HORIZ. _____ VERT. _____

 DEPTH 302'.0

 DRILLED BY Continental Diamond Drill Co.

DEPTH - FEET	FORMATION	SAMPLE NO.	FROM	TO	WIDTH	VALUES				ECONOMIC GEOLOGY MINERALIZATION
						Cu	Ni	Ag	Au	
	old gabbro.)	CK#2	205.7	206.2	0.5	4.72		0.47	Trace	- a character sample-
256.4-302.0	Waxy Quartz porphyry dyke chiefly Quartz sericite comp'n with schistosity at 45° to core.									A ½ inch wide Qts. string- er runs at 25° to core carries about 10% chal- copyrite with 3% pyrroho- tite, 2% pyrite.
302.0	End of hole.									
	Acid Test @ 200'									
	Read angle Corrected angle									
	-52°									

 ENGINEER: C. J. Kuryliw