



42A05NE0361 17 CARSCALLEN

010

Diamond Drilling

Township of Carscallen

Report No: 17

Work performed by: Mespi Mines Ltd.

Claim No	Hole No	Footage	Date	Note
P 56869	W.C.#1	399'	Mar/67	
P 56870	W.C.#2	405'	Mar/67	
	W.C.#3	359'	Apr/67	
P 55602	W.C.#4	410'	Apr/67	
P 55596	W.C.#5	445'	Apr/67	
P 55600	W.C.#7	708'	May/67	
	W.C.#7A	195'	May/67	
		<u>7/2921'</u>		

Notes:

DIAMOND DRILL HOLE RECORD, BOH NO. 1571

PROPERTY Carscallen Township

CLAIM P. 56869

SHEET No. 1

LATITUDE Line 38 - West

BEARING Grid N.

STARTED March 18, 1967

DEPARTURE 24 75 S

DIP. - 50 deg. @ collar, - 48 deg. @ 390

COMPLETED March 22, 1967

ELEVATION _____

HORIZ. _____ VERT. _____

DEPTH 399

DRILLED BY Bradley Bros.

196869

DEPTH - FEET	FORMATION	SAMPLE NO.	FROM	TO	WIDTH	VALUES				ECONOMIC GEOLOGY MINERALIZATION
0 - 32	Casing									
32 - 55	Rhyo-dacite, medium greenish grey, fine grained, locally chloritic, trace pyrite altered silicified, granitic and chloritic blotches & stringers.									
55 - 68	Transition zone, andesitic, carbonitized, chloritic, local minor pyrite seams.									
68 - 112	Diorite, fine becoming medium grained, mafics amphibolitized locally silicified carbonitized epidotized with irregular blotches pyrite and pyrrhotite.									
112 - 125	Rhyolite tuff? sheared, very hard, medium grained, blotchy silicification									
125 - 136	Diorite as above. @ 128 - 2 1/2' of 40% pyrrhotite minor chalcocite.									

J. Steves

PROPERTY _____

CLAIM _____

SHEET No. 2

LATITUDE _____

BEARING _____

STARTED _____

DEPARTURE _____

DIP. _____

COMPLETED _____

ELEVATION _____

HORIZ. _____

VERT. _____

DEPTH _____

DRILLED BY _____

DEPTH - FEET	FORMATION	SAMPLE NO.	FROM	TO	WIDTH	VALUES				ECONOMIC GEOLOGY MINERALIZATION
136 - 265.5	Rhyolite tuff as before, becoming darker with chloritic partings, irregular pyrite & pyrrhotite splashed, locally heavily silicified.									
	170 - 192 Average 30% pyrrhotite & pyrite trace chalcopyrite - 3 to 6" sections massive pyrrhotite & pyrite.									
	195 - 265.5 Rhyolitic tuffs, sugary grained non-bedded mottled grey-green to creamy white.									
265.5 - 399	Diorite, medium to coarse grained locally silicified & carbonitized.									
	399 - END.									

ENGINEER: _____

J. Steen

PROPERTY Carscallen

CLAIM P. 56870

SHEET No. 1

LATITUDE Line 28 West

BEARING _____

STARTED March 3, 1967

DEPARTURE 26 00 S

DIP. - 50 deg. @ collar, -36 @ 400' (corrected)

COMPLETED April 2, 1967

ELEVATION _____

HORIZ. _____

VERT. _____

DEPTH 497 405

DRILLED BY Bradley Bros. Limited

P. 56870

DEPTH - FEET	FORMATION	SAMPLE NO.	FROM	TO	WIDTH	VALUES				ECONOMIC GEOLOGY MINERALIZATION
0 - 8	Casing									
8 - 185	Rhyolite schists, fine grained, locally fragmental, silicified, mottled dark grey to pale waxy greenish, highly siliceous and sericitic, foliation vague - 15 deg. to 30 deg. to core axis, minor disseminated pyrite with occasional coarse pyrite crystals.									
	37-41, 20% bluish white quartz, phenocrysts, heavy silicification.									
	41-50, Mottled waxy greenish with pale greyish bands, contacts vague.									
	50-130 Pale greyish, fine grained carbonitized, numerous tiny quartz carbonate stringers, locally fragmental, foliation 25 to 30 deg. to core axis, 1-2% pyrite									

ENGINEER: *R. Steer*

DIAMOND DRILL HOLE RECORD, DDH No. _____

SHEET No. 2

PROPERTY _____ CLAIM _____

LATITUDE _____ BEARING _____ STARTED _____

DEPARTURE _____ DIP. _____ COMPLETED _____

ELEVATION _____ HORIZ. _____ VERT. _____ DEPTH _____

DRILLED BY _____

DEPTH - FEET	FORMATION	SAMPLE NO.	FROM	TO	WIDTH	VALUES				ECONOMIC GEOLOGY MINERALIZATION
						Au	Ag	Cu	Zn	
	and trace pyrrhotite.									
	100-101, quartz vien									
	112.5-114 quartz vien with minor pyrite									
	130-185.5 Darker greyish, more fragmental bedding and foliation 30-35 deg. to core axis									
	149.5-156.5 30% Pyrite, pyrrhotite	A-3601	149.5	156.5	7.0	Tr.	0.03	0.01	Nil	0.02
	149.5-150 Massive Pyrite & Pyrrhotite									
	150-156.5 -30% pyrite & Pyrrhotite, trace chalcopyrite.									
185.5 - 230	Pale greyish, green mottled rhyolite porphyry									
230-239.5	Acid tuffs, pale greyish, very fine grained									
239.5-248	Rhyolite porphyry as above									
248 - 262	Contact zone, rhyolitic material intruded by dark green chilled very hard basic material, irregular patchy pyrite and	3602	250.5	255.5	5.0	Tr.	Tr.	0.02	Nil	
		3603	255.5	260.5	5.0	Tr.	Tr.	0.02	Nil	

ENGINEER *[Signature]*

DIAMOND DRILL HOLE RECORD, DDH No

No. 2

SHEET No. 3

PROPERTY _____ CLAIM _____

LATITUDE _____ BEARING _____ STARTED _____

DEPARTURE _____ *D.* _____ COMPLETED _____

ELEVATION _____ HORIZ. _____ VERT. _____ DEPTH _____

DRILLED BY _____

DEPTH - FEET	FORMATION	SAMPLE NO.	FROM	TO	WIDTH	VALUES				Ni	ECONOMIC GEOLOGY MINERALIZATION
						Au	Ag	Cu	Zn		
	pyrrhotite average 20% sulphides.	3604	260.5	265.5	5.0	Tr.	Tr.	0.04	Nil		
262-270.5	Rhyolitic tuffs as before with occasional basic fingers.	3605	262.5	270.5	5.0	Tr.	0.02	0.03	Nil		
		3606	270.5	272.5	2.0	Tr.	0.02	0.04	Nil		
270.5-336	Rhyodacite - mottled grey green, very hard, heavily silicified with tiny quartz-chlorite blebs throughout, fractures chloritic and slickensided.										
336-357	Diorite or quartz-diorite, fine grained phase, dark to medium green, locally heavily silicified minor disseminated pyrite and traces chalcopyrite, trace sphalerite at 347										
357 - 405	Rhyo-dacite as before, a few narrow tongues quartz diorite, minor disseminated pyrite occasional fractures with film of pyrite.										
	405 - END.										

ENGINEER: *J. Steers*

DIAMOND DRILL HOLE RECORD, DDH No

W.C. #3

PROPERTY Carasallen Twp. CLAIM 36870 SHEET No. _____
 LATITUDE Line 20 N BEARING Grid South. STARTED APR. 3/67
 DEPARTURE 29+00 S. DIP. -50° COMPLETED APR 7/67
 ELEVATION _____ HORIZ. _____ VERT. _____ DEPTH 359
 DRILLED BY Bradley Bros

DEPTH - FEET	FORMATION	SAMPLE NO.	FROM	TO	WIDTH	VALUES				ECONOMIC GEOLOGY MINERALIZATION
0-25	Casing									
25-48	Diorite? brecciated, medium to dark green, chloritic, locally bleached & silicified, 2 to 5% Pyrite & pyrrhotite with minor chalcopyrite, disseminated & in stringer form, numerous anastomosing chloritic fractures.									
48-74	Rhyo-dacite - hard, pale grayish to pale greenish, chloritic fractures, tiny distorted chlorite spherulites, translucent selvages.									
74-154	Diorite breccia as above very minor sulphides.									
154-179	Basalt? fine grained dark									

DIAMOND DRILL HOLE RECORD, DDH No _____

PROPERTY _____

CLAIM _____

SHEET No. _____

LATITUDE _____

BEARING _____

STARTED _____

DEPARTURE _____

DIP. _____

COMPLETED _____

ELEVATION _____

HORIZ. _____ VERT. _____

DEPTH _____

DRILLED BY _____

DEPTH - FEET	FORMATION	SAMPLE NO.	FROM	TO	WIDTH	VALUES				ECONOMIC GEOLOGY MINERALIZATION
	<i>green matrix with 20% tiny creamy feldspar phenocrysts</i>									
	<i>359 end.</i>									

Report No. 25
DIAMOND DRILL HOLE RECORD, DDH No

WC-4

PROPERTY Carscolla Twp.

CLAIM P-55602

SHEET No. _____

LATITUDE Line 0400

BEARING Grid N.

STARTED Apr 14/67

DEPARTURE 9.70 South

DIP. -50°

COMPLETED Apr. 18/67

ELEVATION _____

HORIZ. _____ VERT. _____

DEPTH 410 ft.

DRILLED BY Bradley Bros.

DEPTH - FEET	FORMATION	SAMPLE NO.	FROM	TO	WIDTH	VALUES	ECONOMIC GEOLOGY MINERALIZATION
0-12	Casing						
12-17	Meta-andesite - fine grained, dark greenish, chloritic & carbonized, very minor pyrite. lower contact @ 70° core axis.						
17-35	Quartz feldspar porphyry - pale white, becoming pinkish at 28' 28-35 Pinkish with ~15% unrecognizable mafics - feldspars 1/8 to 1/2" diameter, anhedral, qtz is clear, round about 1/16-1/8" dia.						
35-265	Meta-andesite as above, locally foliated @ 60° core axis, locally bleached, silicified & epidotized from 100-265 suggestion that						

ENGINEER: [Signature]

DIAMOND DRILL HOLE RECORD, DDH No

PROPERTY _____

CLAIM _____

SHEET No. _____

LATITUDE _____

BEARING _____

STARTED _____

DEPARTURE _____

DIP. _____

COMPLETED _____

ELEVATION _____

HORIZ. _____


VERT. _____

DEPTH _____

DRILLED BY _____

DEPTH - FEET	FORMATION	SAMPLE NO.	FROM	TO	WIDTH	VALUES					ECONOMIC GEOLOGY MINERALIZATION
						Ad	Ag	Cu	Ni	Zn	
	rock may be fragmental										
	130-175 approx 15% Py. with										
	minor Po & traces Cp.										
	175-200 25% Py & Po, minor Cp.										
	200-242 40 to 70% Py & Po traces Cp.										
	242-253 - Quartz vein with about 10% Py & Po.										
	253-265 70-80% Py & Po in chloritic	R-3607	200	205	5.0'	Tr.	0.03	0.02	0.02	nil	
	matrix, minor Cp.	3608	205	210	5.0	Tr.	Tr.	0.01	0.01	nil	
265-304	Rhyolitic tuff: pale wh. tuff, very	3609	210	215	5.0	Tr.	0.05	0.02	0.01	nil	
	hard, 10% tiny qtz. phenocrysts,	3610	215	220	5.0	Tr.	0.04	0.02	0.02	nil	
	minor sericite.	3611	220	225	5.0	Tr.	0.05	0.01	0.02	nil	
304-319	Graywacke or meta-ardesite,	3612	225	230	5.0	Tr.	Tr.	0.02	0.01	nil	
	dark green, chloritic, mottled with	3613	230	235	5.0	Tr.	Tr.	0.01	Tr.	nil	
	carbonate	3614	235	242	7.0	Tr.	0.03	0.01	0.01	nil	
319- 340 40	Acid tuffs as above, slowly grading	3615	242	245	3.0	.005	Tr.	Tr.	Tr.	nil	
	to darker gray-green graywacke	3616	245	250	5.0	.005	nil	0.01	Tr.	nil.	
	bedding 55° cone, minor Pyrite										
	410 end.										

ENGINEER: _____



DIAMOND DRILL HOLE RECORD, DDH No

W.C. # 5

4-55516

O.L. : 1-18
 17

PROPERTY Carscallen

CLAIM P. 55596

SHEET No. 1

LATITUDE Line 20 W

BEARING _____

STARTED April 19/67

DEPARTURE 1 00 S

DIP. - 50 deg. @ collar, - 36 @ 440 (corrected)

COMPLETED April 23/67

ELEVATION _____

HORIZ. _____ VERT. _____

DEPTH 445

DRILLED BY Bradley Bros. Limited

DEPTH - FEET	FORMATION	SAMPLE NO.	FROM	TO	WIDTH	VALUES				ECONOMIC GEOLOGY MINERALIZATION
0 - 30	Casing									
30 - 300	Rhyo-dacite, fine grained, dark grey, mottled with 10% alteration spots-centres of which are tiny clear quartz crystals. @ 36 becoming lighter coloured, bedded, mottled pale grey to waxy greenish, con- siderable sericite-tuffaceous nature apparent-foliation 50 deg. to core- bedding -50 to -65 deg. to core. 127 - 145 - 7% pyrite and pyrrhotite 145 - 150 - 15% pyrite and pyrrhotite 127 - 250 much coarser some fragments 1" x 1"- graded bedding evident taps up hole. 177 - 183 fine grained well foliated andesite tuffs.									

ENGINEER: *J. Steers*

DIAMOND DRILL HOLE RECORD, DDH No V.C. # 5

PROPERTY _____ CLAIM _____ SHEET No. 3

LATITUDE _____ BEARING _____ STARTED _____

DEPARTURE _____ DIP. _____ COMPLETED _____

ELEVATION _____ HORIZ. _____ VERT. _____ DEPTH _____

DRILLED BY _____

DEPTH - FEET	FORMATION	SAMPLE NO.	FROM	TO	WIDTH	VALUES				ECONOMIC GEOLOGY MINERALIZATION
363 - 445	Conglomerate? or Intermediate Breccia, dark greenish grey with vague greyish fragments, locally fine grained sections, tops down hole.									
	392 - 394, very dark reddish, fine grained carbonitized lightly pyritized colour imparted by disseminated hematite, foliated 55 deg to core axis.									
	445 - END.									

ENGINEER: *J. Sleets*

Report # 15

DIAMOND DRILL HOLE RECORD, DDH No W.C. # 7 B

PROPERTY Carscallen Township CLAIM P. 55600 SHEET No. 1

LATITUDE _____ BEARING Grid North STARTED May 1, 1967
 DEPARTURE _____ DIP. - 50 deg. COMPLETED May 20, 1967
 ELEVATION _____ HORIZ. _____ VERT. _____ DEPTH 708

DRILLED BY Bradley Bros. Limited

DEPTH - FEET	FORMATION	SAMPLE NO.	FROM	TO	WIDTH	VALUES				ECONOMIC GEOLOGY MINERALIZATION
0 - 144	Casing									
144 - 224	Intermediate well bedded, colour banded sediments - 10% tiny quartz eyes, highly calcareous, white to medium green minor pyrite and pyrrhotite with trace chalcopyrite, foliation 50 deg to core contact 40 deg to core.									
224 - 371	Andesite ? fine grained medium green, foliated 40 deg. core chloritic and highly calcareous with incipient pink silicification irregular pyrite lens and clots 1-3% pyrite.									
371 - 377	rhyolitic tuffs, very fine grained, light waxy greenish grey, well foliated with 10% pyrite lamina.									
377 - 411	Andesite ? as before with 10-15% pyrite.									

ENGINEER

DIAMOND DRILL HOLE RECORD, DDH No W.C. # 7

PROPERTY _____ CLAIM _____ SHEET No. 3

LATITUDE _____ BEARING _____ STARTED _____
 DEPARTURE _____ DIP. _____ COMPLETED _____
 ELEVATION _____ HORIZ. _____ VERT. _____ DEPTH _____

DRILLED BY _____

DEPTH - FEET	FORMATION	SAMPLE NO.	FROM	TO	WIDTH	VALUES				ECONOMIC GEOLOGY MINERALIZATION
	sericitic, a few quartz phenocrysts.									
	677-679 - 20% pyrite and pyrrhotite									
	679 - 708 Minor pyrite and pyrrhotite.									
	708 - END									

ENGINEER: *[Signature]*

DIAMOND DRILL LOG RECORD

PROPERTY Carocater Twp

CLAIM P-55600

LATITUDE Line 18W

BEARING Grid N.

STARTED May 17 1967

DEPARTURE 9+50 S.

DIP. -50°

COMPLETED May 14, 1967

ELEVATION _____

HORIZ. _____

VERT. _____

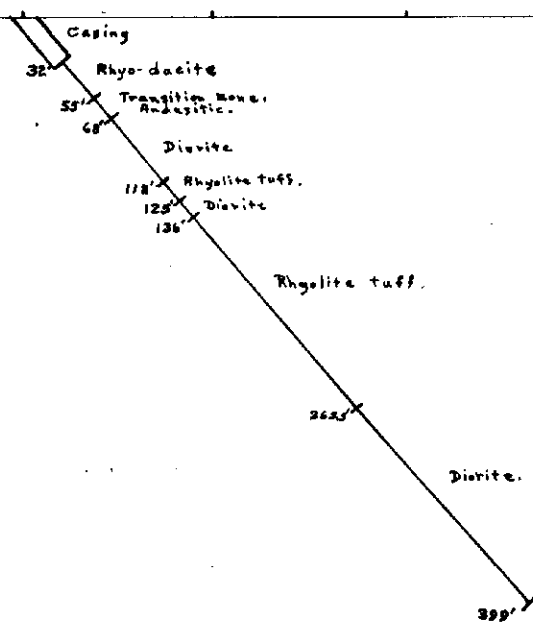
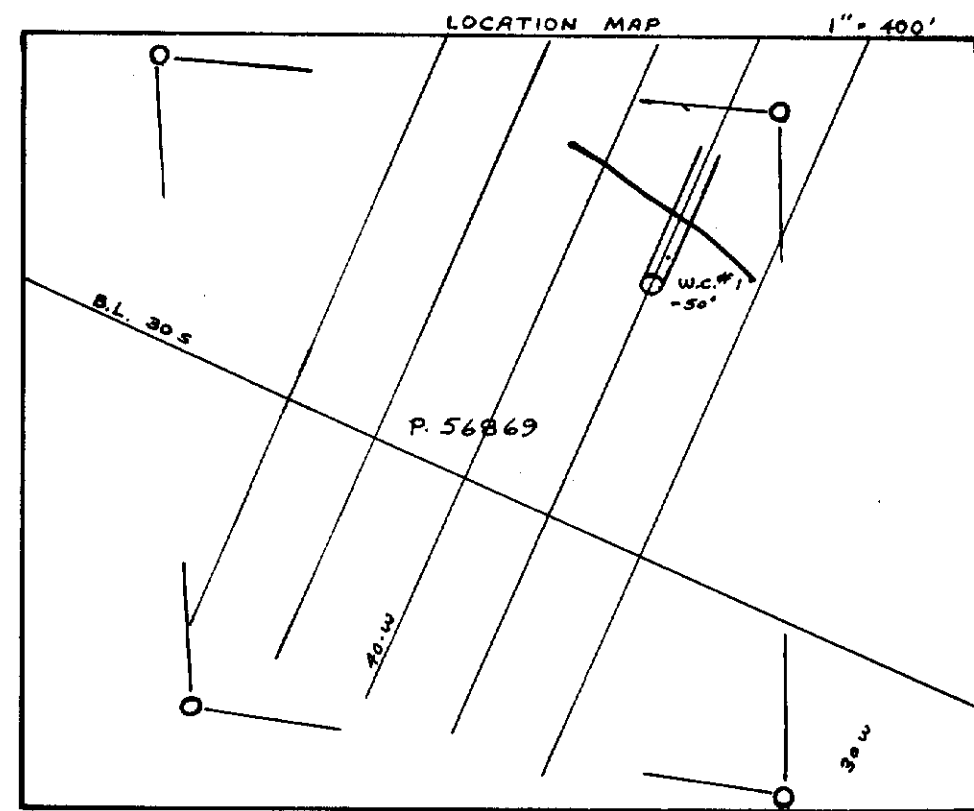
DEPTH _____

DRILLED BY Bradley Bros.

P. 55600

DEPTH - FEET	FORMATION	SAMPLE NO.	FROM	TO	WIDTH	VALUES				ECONOMIC GEOLOGY MINERALIZATION
0-90	Casing.									
90-130	Soft, schistose, deeply weathered, hematite stained tuffs.									
	Only 5% core recovery.									
130-195	Acid tuffs:- vaguely bedded, fine grained, medium green, carbonitized, foliated, 60° core axis.									
	1815-184 core ground.									
	Casing broke, hole abandoned @ 195.									

ENGINEER: [Signature]



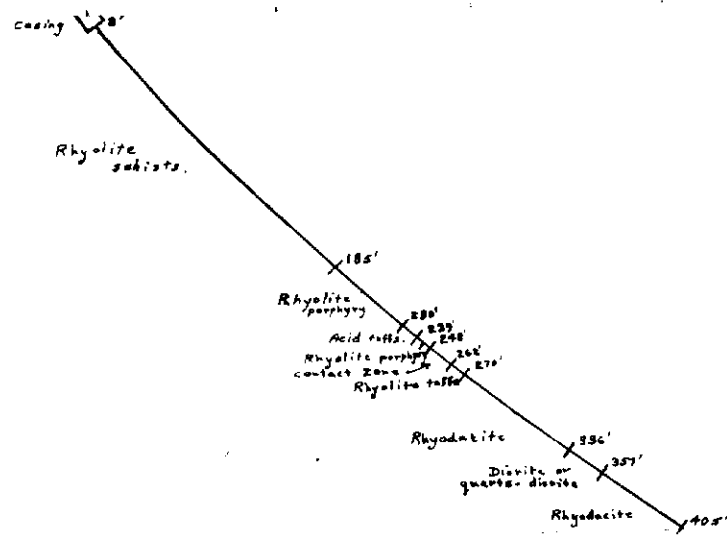
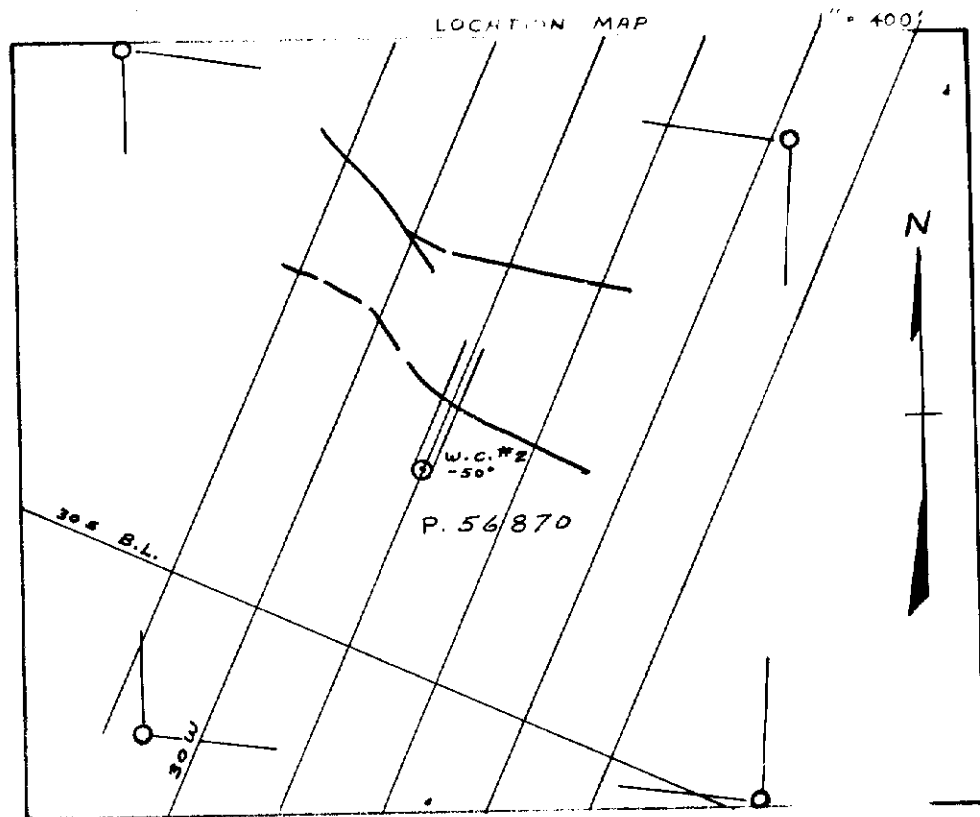
MESPI MINES LTD.
 CARSCALLEN TOWNSHIP
 W.C.#1
 SECTION BEARING GRID NORTH

17

Scale: 1" = 100'

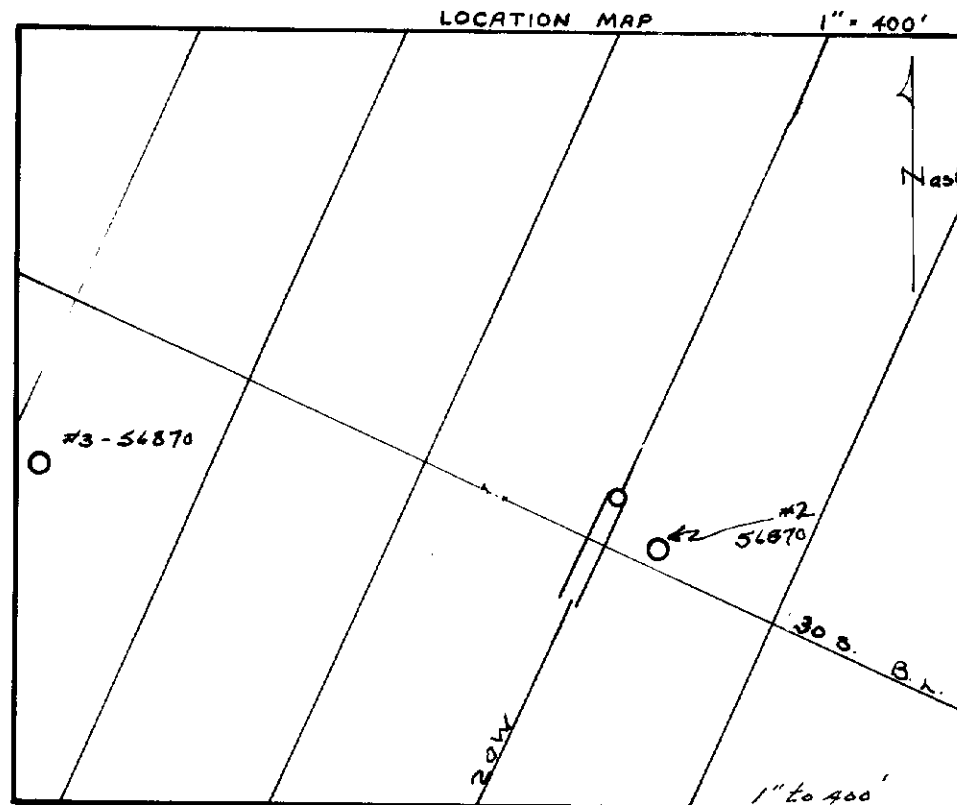
Date: *[Signature]*





MESPI MINES LTD.
 CARSCALLEN TOWNSHIP.
 W.C. # 2.
 SECTION BEARING GRID NORTH
 # 17
 Scale: 1" = 100
 Date: *J. Steen*

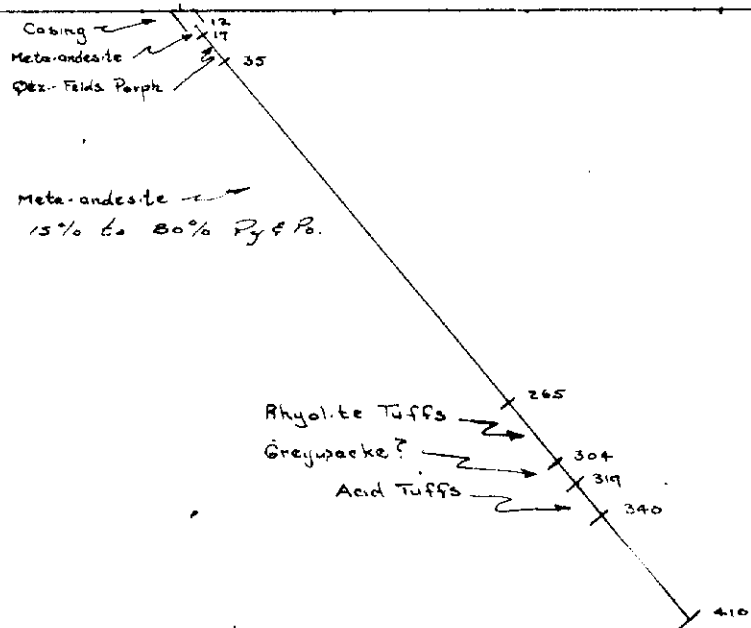
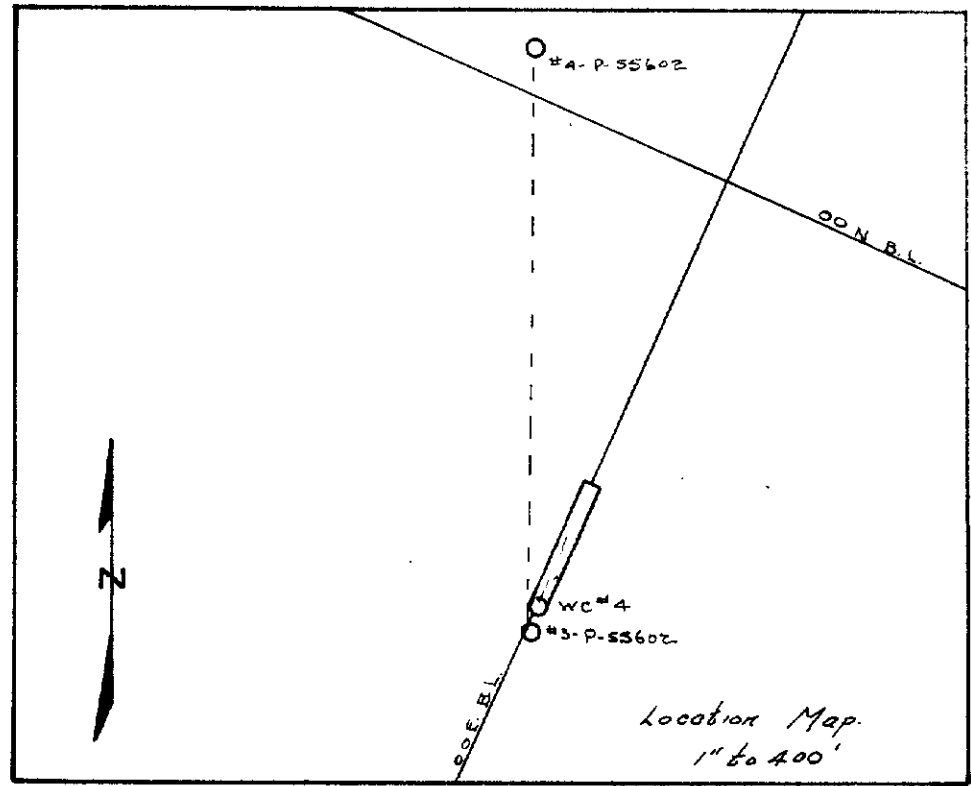




18 Diorite
 75 Rhyodacite
 Diorite breccia
 154
 179 Basalt?
 187
 Rhyo-dacite
 312 Diorite Porphyry
 321 Rhyo-dacite
 348 Rhyo-dacite
 359 Diorite

MESPI MINES LTD.
 CARSCALLEN TWP.
 W.C. # 3
 Line 20W, 29100 South
 Section bearing North looking West.
 # 17
 Scale: 1" = 100
 Date: May 10/67
J. Steers





MESPI MINES LTD.

Carscallen Twp.

W.C. # 4

*Section Bearing Grid N.
Looking W.*

#

17

Scale: 1" = 100'

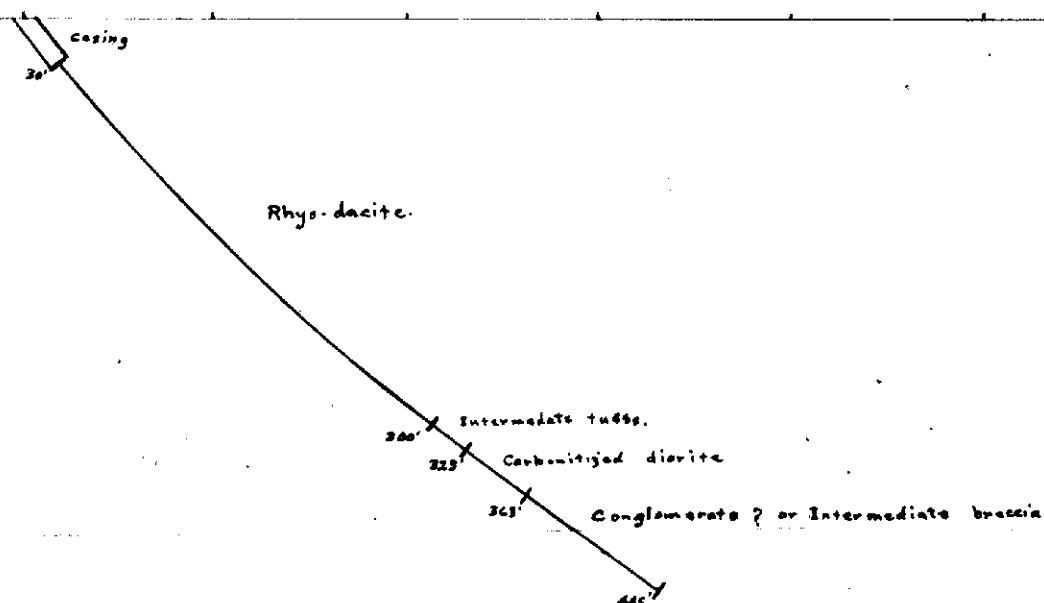
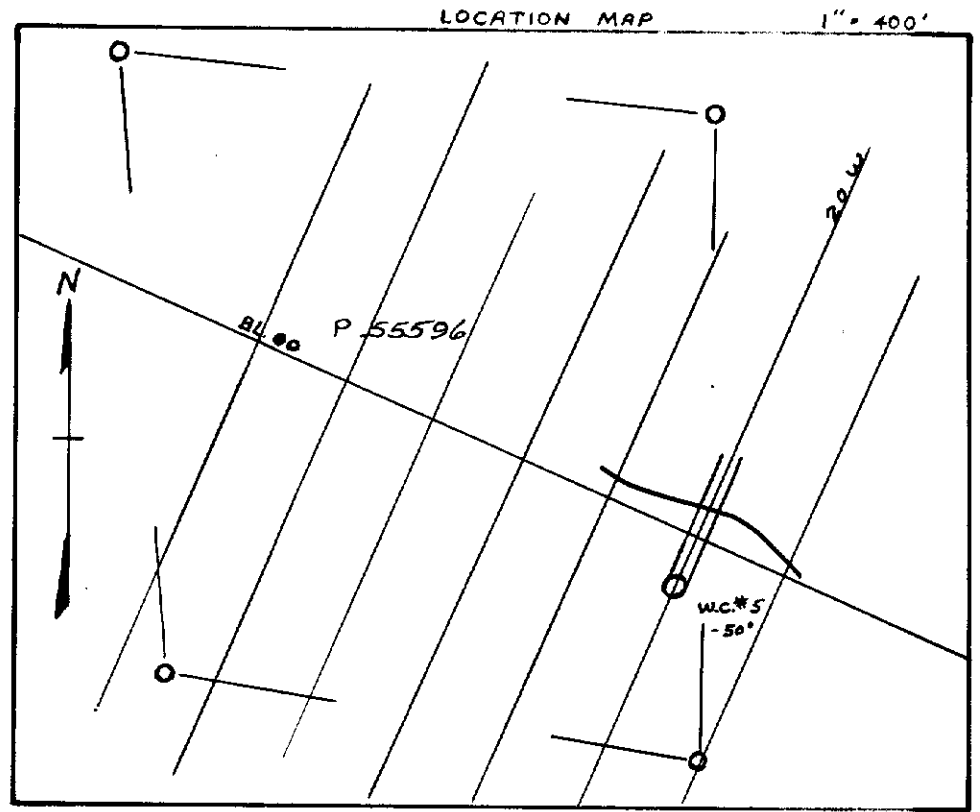
Date: May 1, 1967

J. Stead



42A05NE0361 17 CARSCALLEN

230



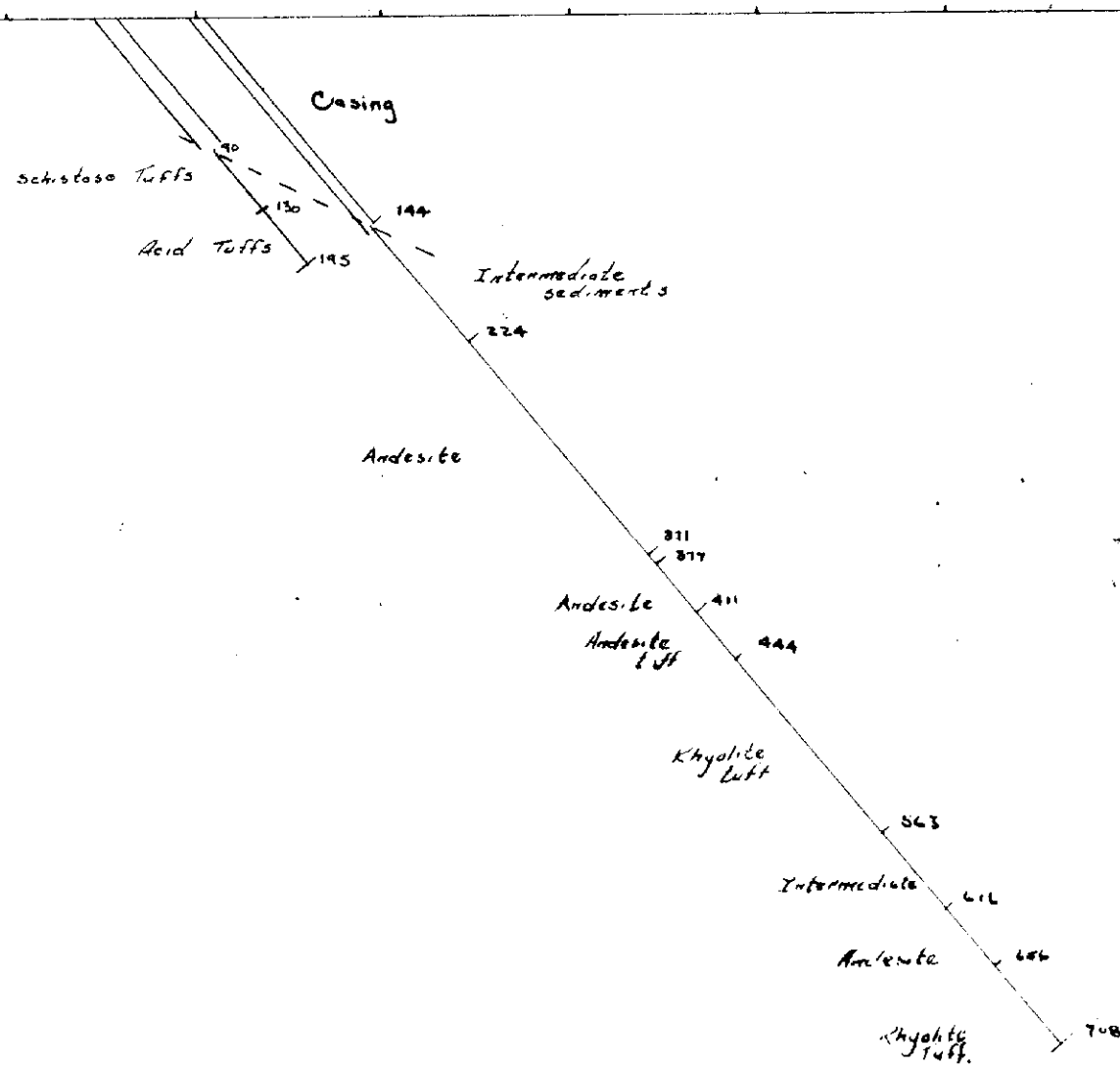
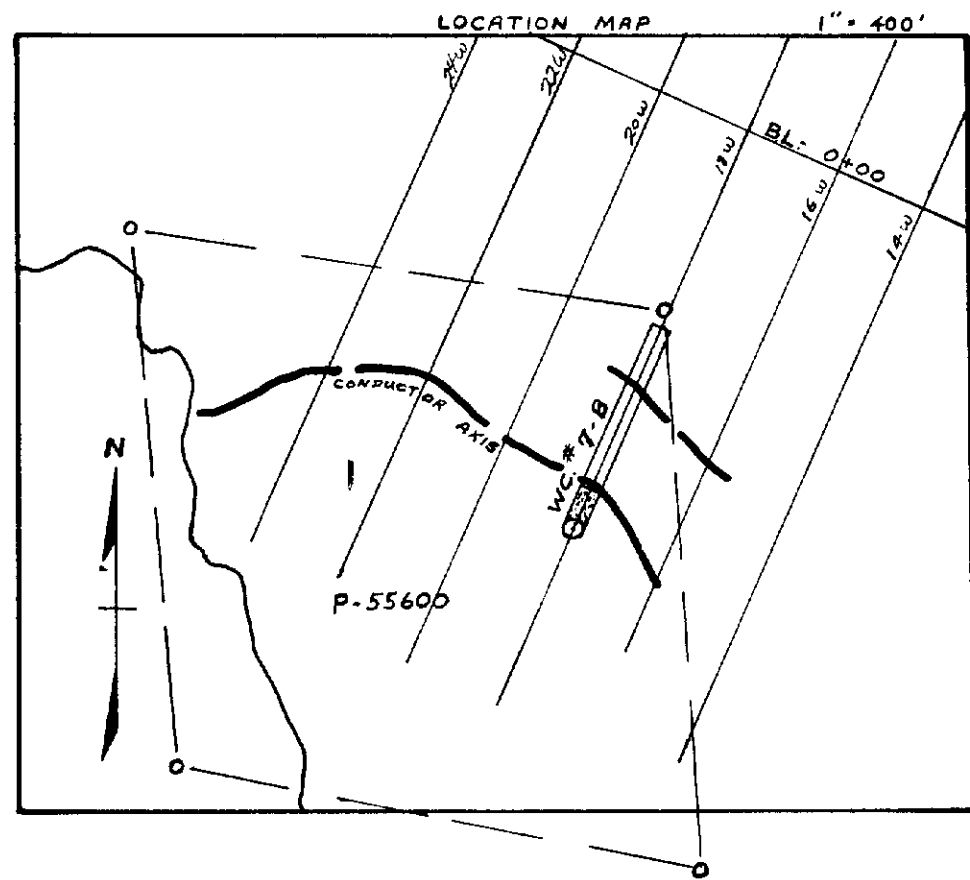
MESPI MINES LTD.
 CARSCALLEN TOWNSHIP.
 W.C.# 5
 SECTION BEARING GRID NORTH

17

Scale: 1" = 100'

J. Fleets

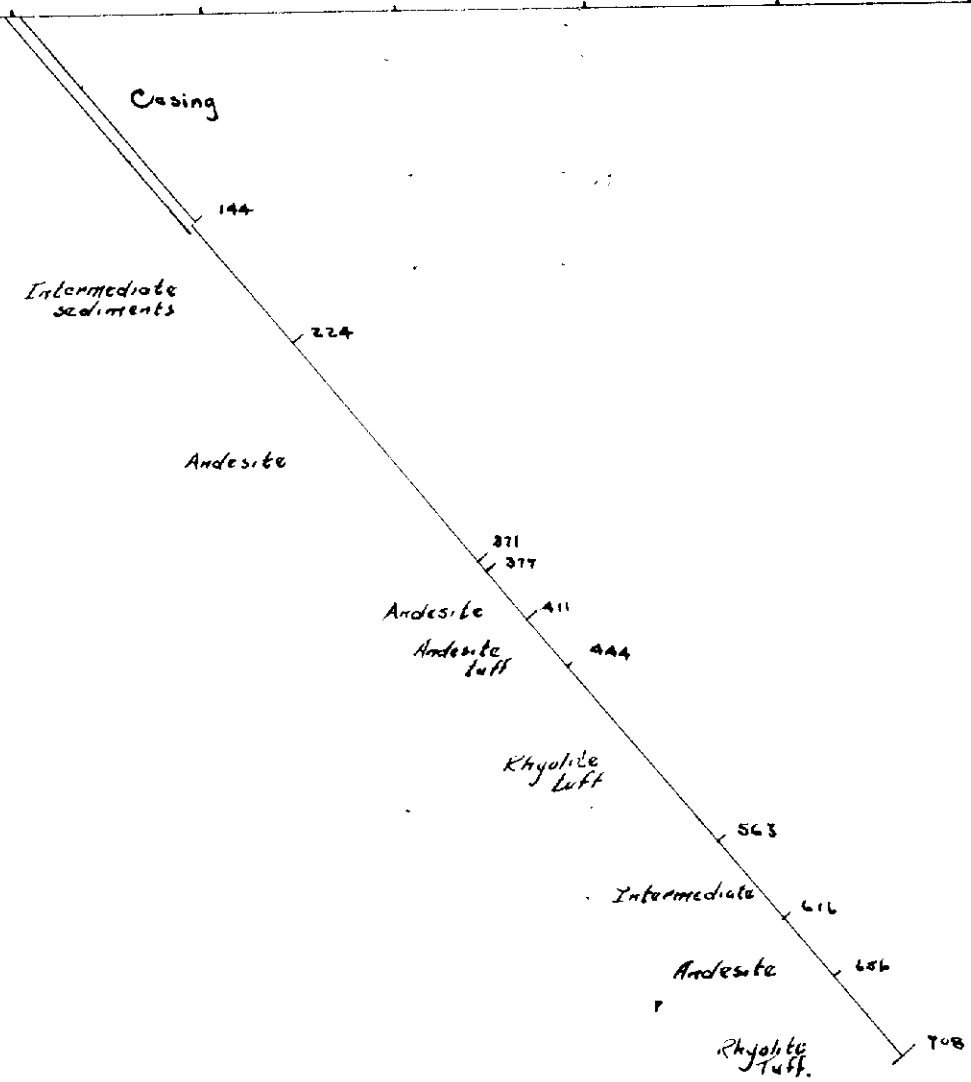
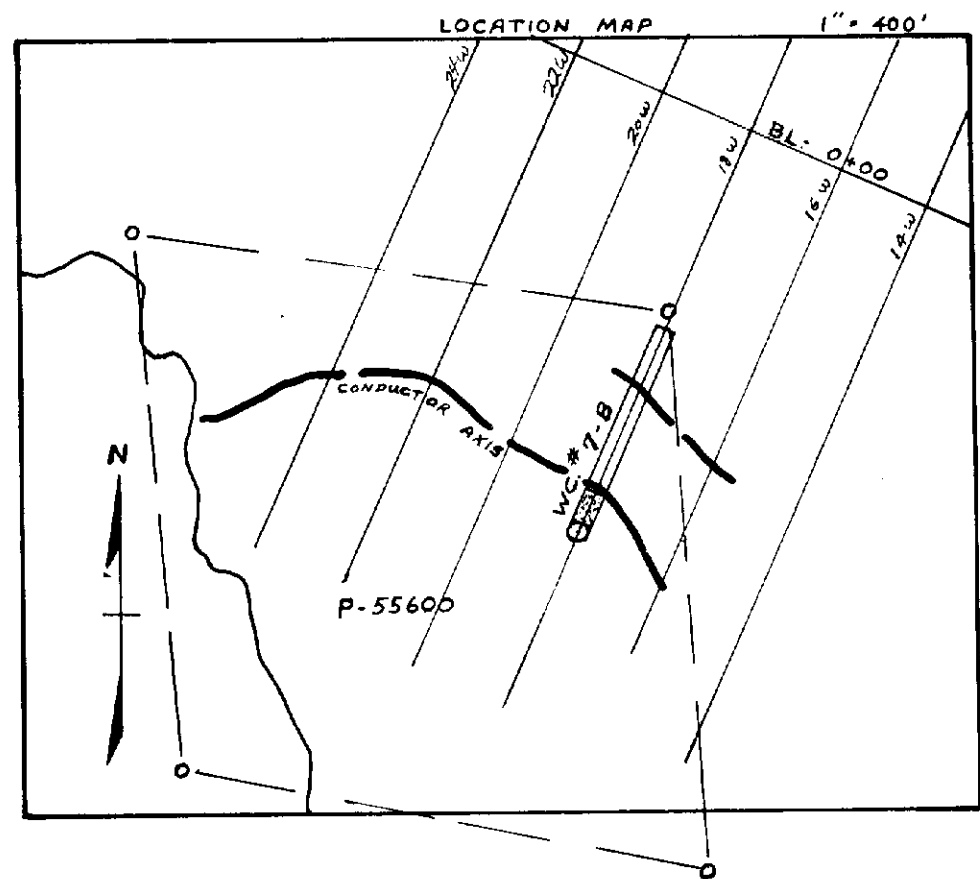




MESPI MINES LTD.
 CARSCALLEN TOWNSHIP
 WC # 7-A, B
 SECTION BEARING GRID NORTH
 Section along 18100W
 looking W.
 Scale: 1" = 100'
 # 17
 Date: June 15/67
R. Stevens

Note: 7-B drilled 20 ft. E. of Section





P. 55600

MESPI MINES LTD.
 CARSCALLEN TOWNSHIP
 WC # 7-B
 SECTION BEARING GRID NORTH
 # 17
 Scale: 1" = 100'
 17" x 23"
 Date: June 15/67
[Signature]

