



42A05NE0362 14 CARSCALLEN

010

Diamond Drilling

Township of Carscallen

Report No: 14

Work performed by: Lucky Strike Explorations Ltd.

Claim No	Hole No	Footage	Date	Note
P 58535	1	445'	July/64	
P 58544	2	370'	Aug/64	
	3	322'	Aug/64	
P 58536	4	201'	Aug/64	

Notes:

Drill Hole Log

4-21
~~20~~
 P. 58536

COMPANY Lucky Strike Explorations Ltd. PROPERTY Carscallen TWP, Ontario Section No. _____ HOLE No. 1

Started <u>July 27, 1964</u>	Bearing <u>North</u>	Lat. <u>735 S</u>	Collar El. _____	Logged by <u>B. Patsch</u> Date <u>July 27 - Aug</u>
Completed <u>Aug. 3</u>	Angle from Horiz. <u>45°</u>	Dip. <u>1570 E</u>	Bottom El. _____	Remarks <u>Barren Sulphides</u>
Driller <u>Paul Ramsey</u>	Length <u>445</u>	Location Claim # <u>58535</u> Level _____		

Footage		Interval	RECOVERY		Graphic Log	DESCRIPTION	Sample No.	From - To	Interval	ASSAY				
From	To		Ft.	%						Au	Cu	Ni	Zn	
0	3													
0	79	79		100		Casing Greenstone, fine grained; varying silicification, chloritization, carbonization, resulting in streaked to breccia-like appearance; medium grey to green grey; pyrrhotite streaks (2%); minor magnetite, a few chalcopyrite specks (trace).		5.5-11.5	6		nil			
								30-36	6		nil			
								53-74	21		nil			
79	144	65		100		Greenstone, green grey, more silicified and chloritized than above, streaked and mottled; 5% pyrrhotite streaks in more siliceous and chloritic parts; some coarse garnet grains; trace		79-91	12		nil			
								101-111	10		nil			
								120-144	24		nil			
144	213	69		100		chalcopyrite and pyrite in the pyrrhotite. Greenstone, green grey, fine grained, mottled due to irregular chlorite alteration and high silicification;		144-169	25		nil			
								175-178	3		nil		nil	nil
								198-208	10		nil		nil	nil
						some zones of blue grey chert; varying amounts of pyrrhotite, as fine irregular stringers, as fine dissemination and zones of nearly solid pyrrhotite								

Drill Hole Log

COMPANY Lucky Strike

PROPERTY Carcallen

Section No.

HOLE No. 1

Started	Bearing	Lat.	Collar El.	Logged by	Date
Completed	Angle from Horiz.	Dip.	Bottom El.	Remarks	
Driller	Length	Location	Level		

Footage		Interval	RECOVERY		Graphic Log	DESCRIPTION	Sample No.	From - To	Interval	ASSAY			
From	To		Ft.	%						Au	Cu	Ni	Zn
213	238.5	25.5		100		Greenstone, very cherty, some chlorite; and chert, light grey, some chlorite streaking; pyrrhotite with pyrite; magnetite streaks in chert, Iron Fm.		213-223	10	nil		nil	nil
238.5	356	117.5		100		Massive Sulphide, pyrrhotite and pyrite replacing Greenstone; bands of chert with some magnetite, Iron Fm.		238.5-243.5	5	nil			
								243.5-250	6.5	nil			
								250-260	10	nil			
								260-270	10	nil			
								270-280	10	nil			
								283.5-288.5	5	nil		nil	
								288.5-298.5	10	nil		nil	0.02
								300-310	10	0.17			
								310-320	10	nil	0.04		
	320-330	10	nil										
	336-346	10	nil	0.03									
	346-356	10	nil										
356	445 Final Depth.	89		100		Rhyolite schist, light to medium grey and green grey, sericitic, siliceous, blue grey quartz grains at 381'; occasional traces of pyrite and a few pyrrhotite streaks.							

Drill Hole Log

COMPANY Lucky Strike Explorations Ltd.

PROPERTY Carscallen Twp, Ontario

Section No.

HOLE No. 3

Started <u>Aug. 13, 1964</u>	Bearing <u>North</u>	Lat. <u>1275 S</u>	Collar H.	Logged by <u>B. Patsch</u>	Date <u>Aug 13-16</u>
Completed <u>Aug. 16</u>	Angle from Horiz. <u>45°</u>	Dep. <u>2480 E</u>	Bottom El.	Remarks <u>pyrite & pyrrhotite</u>	
Driller <u>Paul Ramsey</u>	Length <u>322'</u>	Location Claim # <u>58544</u>	Level		

Footage		Interval	RECOVERY		Graphic Log	DESCRIPTION or # <u>58866</u>	Sample No.	From - To	Interval	ASSAY		
From	To		Ft.	%								
0	12	12				casing						
3	193	190				Greenstone; streaked, patchy, variable medium to dark green grey; fine and occasionally medium grained; chloritic to very chloritic in parts; varying siliceous, in small part becoming blue grey chert; varying scattered pyrite (up to 2%), often along fracture planes; wavy bands and patches of pyrrhotite (5 to 10% in parts); very fine disseminated magnetite (up to 10%) in parts; a few bands a few feet thick of rhyolite, light to medium grey, slightly chloritic, some sericite with coarse light blue clear quartz grains.						
193	322					Schist; light grey to light green grey; some chloritic schist planes; 10-15% fine to coarse scattered grey quartz grains; also siliceous cherty bands.						

BURROUGHS PRINTING

SHEET 1 OF 1 SHEETS

Benno J. G. Patsch P. Eng.

Drill Hole Log

COMPANY Lucky Strike Explorations Ltd. PROPERTY Carscallen TWP, Ontario Section No. _____ HOLE No. 4

Started <u>Aug. 18, 1964</u>	Bearing <u>North</u>	Lat. <u>330' S</u>	Collar El. _____	Logged by <u>B. Patsch</u>	Date <u>Aug 21, 64</u>
Completed <u>Aug. 21</u>	Angle from Horiz. <u>45°</u>	Dip. <u>385' E</u>	Bottom El. _____	Remarks <u>pyrite, magnetite, pyrrhotite</u>	
Driller <u>Paul Ramsey</u>	Length <u>201'</u>	Location Claim <u>"58536"</u>		Level _____	

Footage		Interval	RECOVERY		Graphic Log	DESCRIPTION	Sample No.	From - To	Interval	ASSAY		
From	To		Ft.	%								
0	16					casing						
0	14					clay, boulders						
14	83	69		100		Greenstone, medium and dark green grey, fine grained, chloritic to very chloritic; trace pyrite mostly along fractures; very magnetic in upper 30' (15% very fine disseminated magnetite in streaks and patches); thin bands of scattered garnets; minor quartz and carbonate veining; cherty zone from 41-52'						
83	92	9		100		Schist, streaked dark green grey, very chloritic; 3% pyrrhotite in some of the schist layers; trace pyrite; some quartz streaking and a few blebs.						
92	107	15		100		Greenstone, as above, with 5% pyrrhotite as streaks and patches and < 1% pyrite						

Drill Hole Log

COMPANY Lucky Strike

PROPERTY Carscallen

Section No.

HOLE No.

4

Started	Bearing	Lat.	Collar El.	Logged by	Date
Completed	Angle from Merid.	Dop.	Bottom El.	Remarks	
Driller	Length	Location	Level		

Footage		Interval	RECOVERY		Graphic Log	DESCRIPTION	Sample No.	From - To	Interval	ASSAY		
From	To		Ft.	%								
107	123	16		100		Iron Formation?; a chert zone; light grey, some chloritic streaks; 5% fine magnetite streaking; 5% pyrrhotite in streaks + patches						
123	201 FTD.	78		100		Schist, streaked light grey with dark green chloritic bands; trace pyrite grains; trace pyrrhotite in small part; siliceous, scattered light blue grey quartz grains from 155' on, also some cherty patches;						
						some finely disseminated pyrrhotite and scattered pyrite grains;						
						a couple of thin beds of greenstone.						

Swastika, Ont., August 20, 1964

SWASTIKA LABORATORIES LIMITED

Certificate of Analysis

No. 36386

We have assayed twenty-five samples of split core

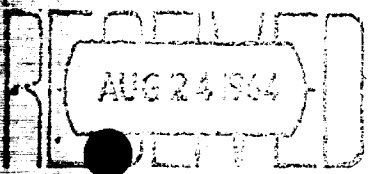
Received Aug. 18, 1964. and submitted by Canex Aerial Exploration Limited.

with the following results:

Sample No.	Gold per ton		Copper Nickel Zinc		
	Ozs.	Value @ \$35.00	%	%	%
CHI 5.5-11.5	Nil	-			
30-36	Nil	-			
53-74	Nil	-			
79-91	Nil	-			
101-111	Nil	-			
120-144	Nil	-			
144-169	Nil	-			
175-178	Nil	-		None	None
198-208	Nil	-		None	None
213-220	Nil	-		None	None
243.5-250	Nil	-			
250-260	Nil	-			
260-270	Nil	-			
270-280	Nil	-			
288.5-298.5	Nil	-		None	0.02
300-310	0.005	\$0.17			
310-320	Nil	-	0.04		
320-330	Nil	-			
336-346	Nil	-	0.03		
346-356	Nil	-			
CH2 61-66	Nil	-			
77-89	Nil	-			
130-138	Nil	-			
207.5-213	Nil	-			
&	Nil	-			
217-222	Nil	-			
285-290	Nil	-		None	Trace

SWASTIKA LABORATORIES LIMITED,

per: *D.C. Kerr-Lawson*



*In accordance with long-established North American custom, unless it is specifically stated otherwise gold and silver values reported on these sheets have not been adjusted to compensate for losses and gains inherent in the fire assay process.

WM. GERRIE, M.A.
D. KERR-LAWSON, B.A., Ph.D.

CORRELATION LABORATORIES LTD.

M. E. WELLER, D.A.
H. E. WELLER

PHONE 729-3684 601 WESTVIEW AVE., OTTAWA 3

CERTIFICATE OF ANALYSIS No. 8901..... Aug. 10, 1964

We have analyzed the samples of pyrrhotite
Received from the SWASTIKA and submitted by Canox Aerial Expl. Ltd.
co., North Hillhouse Bldg., Toronto with the following results:

SPECTROGRAPHIC SEMI-QUANTITATIVE ANALYSIS

ELEMENTS SOUGHT: Antimony, Arsenic, Barium, Beryllium, Bismuth, Cadmium, Chromium, Cobalt, Copper, Gallium, Germanium, Indium, Lead, Iron, Lithium, Manganese, Mercury, Molybdenum, Nickel, Niobium (Columbium), Rare Earths, Silver, Thorium, Tin, Titanium, Tungsten, Uranium, Vanadium, Zinc, Zirconium.

ELEMENTS FOUND:
Approx. Amount

No.

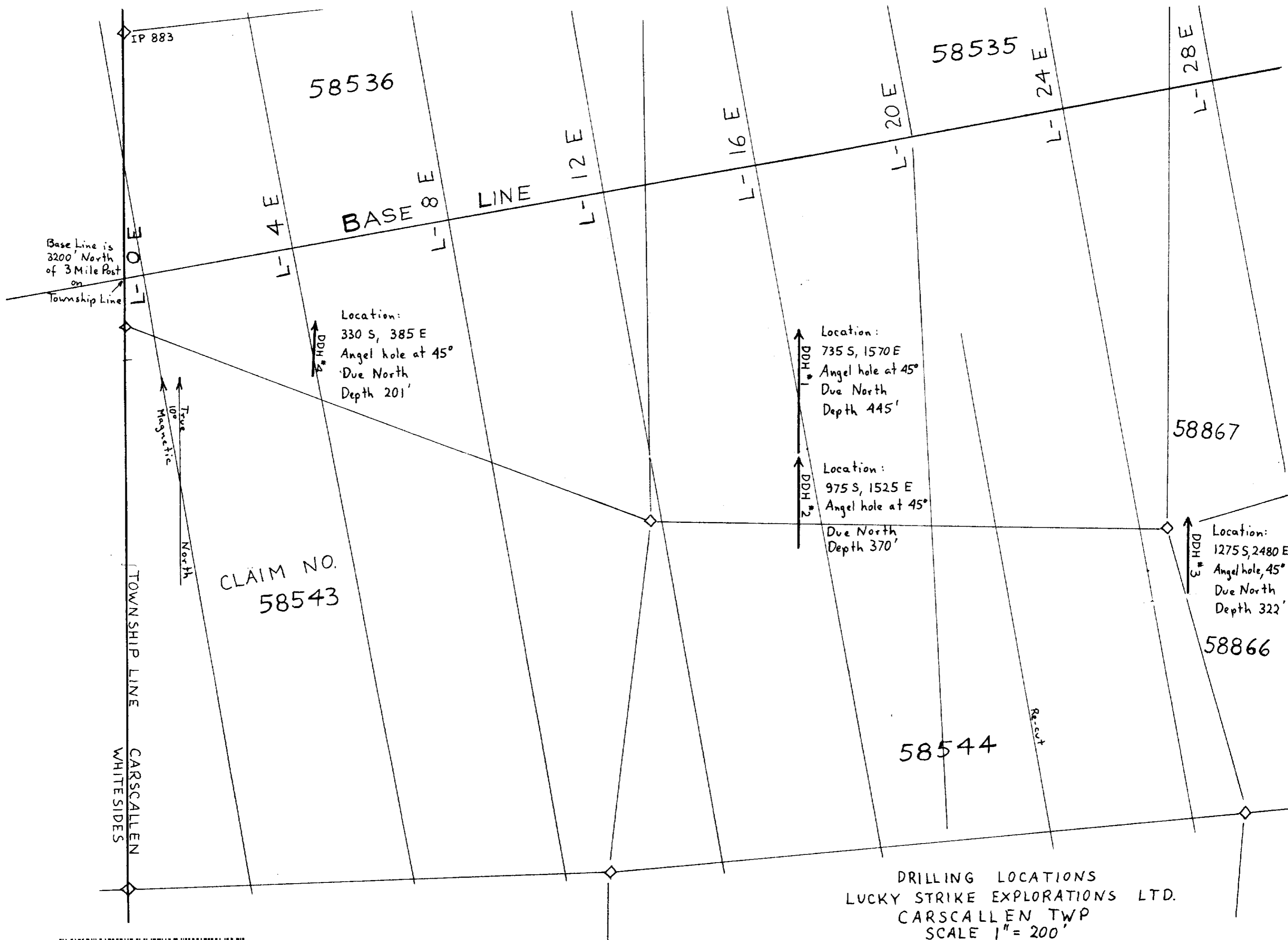
GHI 28815-28815

Over 20 %	Iron
1 to 13 %	Manganese
.01 to .05 %	Nickel
under .01 %	Copper Titanium

CORRELATION LABORATORIES LTD.

Per :

H. Weller
H. Weller



42A05NE0362 14 CARSCALLEN