

2 . 220 99

DIAMOND DRILL CORE LOG-SUMMARY SHEET

Project: Aconda Lake - Godfrey Twp
Date: September 11, 2001
Logged by: Robert Calhoun
Drilling Co: Colbert Drilling

DDH: EGG32-37

Claim Number: P 567635

COLLAR LOCATION: 45889E/5370458N

SURVEYS: none

UTM COORDINATES

GRID COORDINATES

Setup: Depth Azimuth Dip
 0.0 m 175° -45°

Northing: 5370458
Easting: 458889
Elevation: 0.0 meters
TD: 30.0 meters

DRILLING DATES

Started: September 11, 2001
Finished: September 11, 2001



42A05NE2043 2.22099 GODFREY

2. 220 93

DIAMOND DRILL SUMMARY LOG

Project: Aconda Lake - Godfrey Twp
 Date: September 11, 2001
 Logged By: R. F. Calhoun

DDH: EGG32-37

GEOLOGIC SUMMARY

FROM		TO		DESCRIPTION	INTERVAL			SIGNIFICANT ASSAY AVERAGES			
(m)	(m)	From (m)	To (m)		Width (m)	Cu ppm	Zn ppm	Pb ppm	Ag g/t	Au ppb	
0.0	4.4			Overburden							
4.4	12.7			Mafic Volcanic							
12.7	15.5			Pillowed Mafic Volcanics							
15.5	19.5			Pillowed Mafic Volcanic -Copper Zone							
19.5	30.0			Pillowed Mafic Volcanics							
	30.0			End of Hole							

COMMENTS

2. 220 99

Diamond Drill Log

Property: Aconda LakeHole Number: EGG32-37Claim Number: P 567635Location: 458889 / 5370458Final Depth: 30.0mLogged By: Robert CalhounAzimuth: 175°Dates Drilled: September 10-11, 2001Drilled By: Colbert DrillingDip: -45°Dates Logged: September 13, 2001Signature: 

		Assays									
From	To	Description	Sample #	From	To	Length (meter)	Cu ppm	Zn ppm	Pb ppm	Ag g/ton	Au ppb
0.0m	4.4m	Overburden									
4.4	12.7	Mafic Volcanics- massive - fine grained, medium to generally dark green, chloritic. The unit has flow structures to possible pillows. There are short amygduloidal sections, < 10cm with ferro-dolomite to calcite. There are multiple fractured zones, limonitic. Hyaloclastic material occurs locally but throughout. Sulfides of pyrite/chalcopyrite/sphalerite occur in one section, 9.4-10.1m, totaling less than 3% combined as fracture fillings and blebs to 5mm. Calcite veining is a minor constituent.									
12.7	15.5	Pillowed Mafic Volcanics - fine grained, dark green to light green on pillow edges. Pillows are defined by increased chlorite in selvages and minor pillow breccia. There are minor sulfides of generally pyrite randomly distributed but slightly increased towards bottom of the section. There are veins up to 5cm of quartz, ferro-dolomite and possible ankerite.									
15.5	19.5	Pillowed Mafic Volcanics- Copper Zone -unit is as above except that chalcopyrite occurs as fracture fillings, veins and blebs with lesser amounts of pyrite. The chalcopyrite occurs below a 2cm quartz vein at 80° to core axis.									

2009

Diamond Drill Log

Hole # EGG32-37

From	To	Description	Sample #	Assays						
				From	To	Length (meter)	Cu ppm	Zn ppm	Pb ppm	Ag g/ton
19.5	30.0	<p>- 15.5-16.4m - chalcopyrite veins/blebs up to 8cm and contorted veins of calcite/quartz. Chalcopyrite 15-20%, pyrite 10%</p> <p>-16.4-18.45m - chalcopyrite 8-10%, pyrite 5-8% as blebs, fracture fillings and discontinuous veinlets. Sulfide content decreases down hole.</p> <p>-18.45-19.5m - chalcopyrite 1-2% as disseminations, blebs, veinlets, more randomly distributed than above. Lower contact of unit 40° to core axis.</p> <p>Pillowed Mafic Volcanics - amygduloidal - fine grained, dark green to pale green with amygdules filled with calcite to ferro-dolomite and sulfides. The sulfide content is 3-5% as pyrite in the amygdules, local blebs and lesser veinlets to veins. Some of the veins are chocolate brown in colour and may contain sphalerite. Chalcopyrite was noted as fine disseminations but only as a minor constituent</p> <p>-19.5 - 24.0m - base unit is dark green, chloritic pillowed mafics with the bulk of the unit's sulfides in generally small < 1mm to 2mm amygdules. There are minor small siliceous sections < 10cm. Calcite-ferro-dolomite/quartz veins are as discontinuous veinlets and up to 10cm "blow-outs".</p> <p>-24.0 - 30.0m - pillowed mafic volcanics with amygdules small to 4mm. There is significant bleaching with possible silicification in the pillows expressed as pale green colouration and increased hardness. Selvages are still defined as dark green chlorite rich zones</p>								
	30.0	End of Hole								

P 567635

5370450N

Az. 180°

EGG32-37
458889E, 5370450N
Az. 180°, Dip -45°

0

Overburden

Massive Mafic Volcanic

Pillowed Mafic Volcanic

Pillowed Mafic Volcanic - Copper Zone

30.00 m.
G32-37

Pillowed Mafic Volcanic

-50

-50

-100

5370450N

EXPLORERS ALLIANCE CORPORATION

Exploration

Timmins, ONTARIO

GODFREY PROJECT

GODFREY TOWNSHIP

SECTION 458889E

DDH EGG32-37

ASSAYS : Cu ppm, Zn ppm

TRACED:	DATE:	NTS: 42-A/12 @ 05	PROJECT: 8146
DRAWN: dal DRAFTING	DATE: 18/09/2001	MAP No:	FILE: EGG37
SUPERVISED: R Cathoun	DATE: 18/09/2001	SCALE 1: 500 (metres)	
REVISED:	DATE:	0 2.5 5.0	

2. 22099

EGG32-37
 458889E, 5370458N
 Az. 180°, Dip -45°

Massive	Mafic	Volcanic	
Pillowed	Mafic	Volcanic	Copper Zone
Pillowed	Mafic	Volcanic	
Pillowed	Mafic	Volcanic	

G32-37 30.00 m.

2. 220 39

P 567637

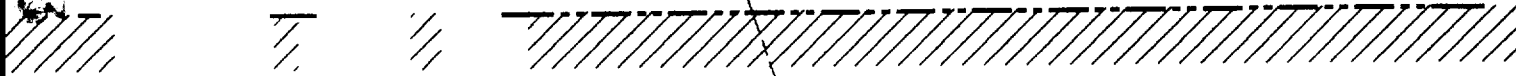
TL 12+00 E

L 16+00 S

499000mE

P 567635

EXPLORERS / FALCONBRIDGE



L 18+00 S

L 18+00 S

TAILINGS

Lot 9

RAISE
Lot 9



P 27215

P 27216

- Q Diamond Drill Holes (Angled)
- O Diamond Drill Holes (Vertical)
- X Surface Grab Sample
- Trench Grab Sample

L 20+00 S

L 20+00 S

5370000mN

5370000mN

GENEX SHAFT



L 21+00 S

P 19292

P 19290

TL 12+00 E

499000mE



EXPLORERS ALLIANCE CORPORATION
 GENEX PROJECT

DRILL HOLES & ASSAYS

SCALE 1:2 500 (metres)



File : Genossey

2.22099

Colbert Drilling and Exploration Co.
A Division of 574395 Ontario Inc.

167 Lakeshore Lane - Timmins, Ontario P4N 7A1
 Telephone: (705) 264-2025 ♦ Fax: (705) 268-4516

Explorers Alliance
 56 Temperance St.
 3rd Floor
 Toronto Ont. M5H 3V5

September 19, 2001

Dear Sir:

Re: Wireline Drilling- Godfrey Twp.
 Project #8147
 September 10th to 12th 2001

EGG-32-37	30 meters of drilling @ \$34.00 per meter	\$1,020.00
Stripping		\$125.00
Floating		\$275.00

G. S. T. Reg # 106397250	Tax	\$1,420.00
		\$99.40
	Total	\$1,519.40

Trusting everything is satisfactory, I remain

Yours Truly,

Edward A. Colbert
 Edward Colbert

Date: 2001-OCT-22

GEOSCIENCE ASSESSMENT OFFICE
933 RAMSEY LAKE ROAD, 6th FLOOR
SUDBURY, ONTARIO
P3E 6B5

FALCONBRIDGE LIMITED
SUITE 1200, 95 WELLINGTON STREET WEST
TORONTO, ONTARIO
M5J 2V4 CANADA

Tel: (888) 415-9845
Fax: (877) 670-1555

Submission Number: 2.22099
Transaction Number(s): W0160.30739

Dear Sir or Madam

Subject: Approval of Assessment Work

We have approved your Assessment Work Submission with the above noted Transaction Number(s). The attached Work Report Summary indicates the results of the approval.

At the discretion of the Ministry, the assessment work performed on the mining lands noted in this work report may be subject to inspection and/or investigation at any time.

If you have any question regarding this correspondence, please contact LUCILLE JEROME by email at lucille.jerome@ndm.gov.on.ca or by phone at (705) 670-5858.

Yours Sincerely,



Ron Gashinski
Supervisor, Geoscience Assessment Office

Cc: Resident Geologist
Falconbridge Limited
(Claim Holder)
Lionel Bonhomme
(Agent)

Assessment File Library
Falconbridge Limited
(Assessment Office)

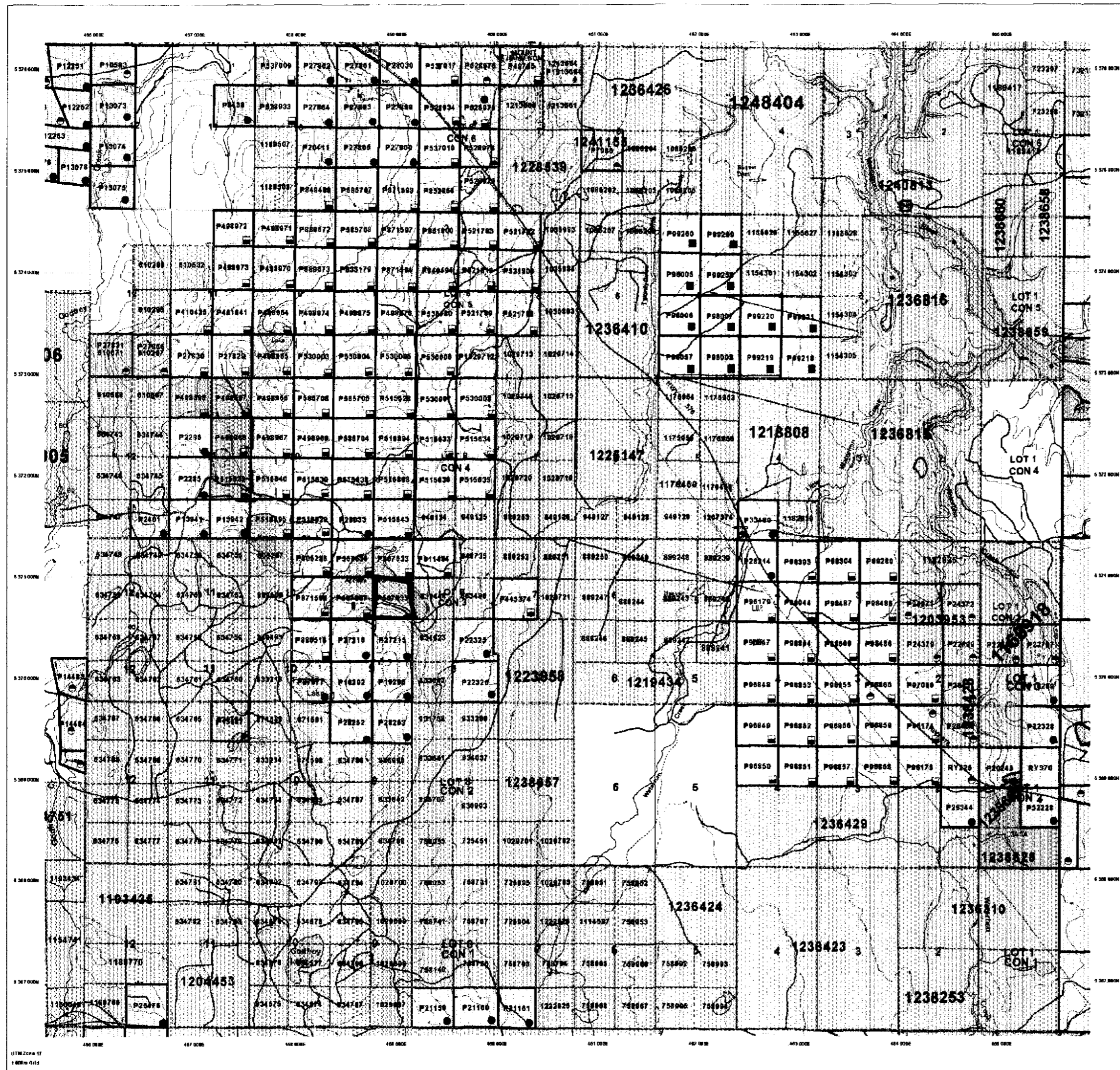


MINISTRY OF
NORTHERN DEVELOPMENT
AND MINES
PROVINCIAL MINING
REGISTRATION OFFICE

MINING LAND TENURE
MAP

Date / Time of Issue Sep 11 2001 10:22h Eastern
TOWNSHIP / AREA PLAN
GODFREY G-3991

ADMINISTRATIVE DISTRICTS / DIVISIONS
Mining Division Porcupine
Land Titles/Registry Division COCHRANE
Ministry of Natural Resources District TIMMINS



TOPOGRAPHIC

- Admin. Boundary
- Township
- Concession Lot
- Province Park
- Indian Reserve
- CR, P, R, M, F, S
- Control
- Control - Admin. Authority Discretion
- Shed
- Min. Structure
- Railway
- Road
- Tier
- Natural Obstacles
- House Line
- Communication Line
- Watercourse
- Mineral or Geomorphological Features

LAND TENURE

1st and 2nd Order

- Surface And Mining Rights
- Surface Rights Only
- Mining Rights Only

3rd and 4th Order

- Surface And Mining Rights
- Surface Rights Only
- Mining Rights Only

License of Occupation

- Freehold Specified
- Surface And Mining Rights
- Surface Rights Only
- Mining Rights Only

LAND TENURE WITHDRAWALS

- 123456: Areas Withdrawn from Operation Mining Act Withdrawal Types
- 123456: Order in Council Withdrawal Types
- 123456: Mining Rights Only Withdrawal
- 123456: Surface Rights Only Withdrawal
- 123456: Mining Rights Only Withdrawal

IMPORTANT NOTICES

123456

LAND TENURE WITHDRAWAL DESCRIPTIONS

Identifier	Type	Date	Description
3342	Withdrawal	Jan 1 2001	THARSHIS LAMP SITE
3346	Withdrawal	Jan 1 2001	FLOODING RISK ON EITHER SIDE OF THE MATTADAM RAVINE TO H.E.P.C.
3346	Withdrawal	Jan 1 2001	RECEIVED FOR RECREATIONAL PURPOSES UNDER P.L.A. F.E.C. 100543
3374	Withdrawal	Jan 1 2001	PENDING APPLICATION UNDER THE PUBLIC LANDS ACT NOTICE RECEIVED 9/1/00 SEE LAND ROLL FILE FOR DETAILS
3375	Withdrawal	Jan 1 2001	RECEIVED FOR RECREATIONAL PURPOSES UNDER P.L.A. F.E.C. 100543
3430	Withdrawal	Jan 1 2001	PENDING APPLICATION UNDER THE PUBLIC LANDS ACT NOTICE RECEIVED 9/1/00 SEE LAND ROLL FILE FOR DETAILS
3434	Withdrawal	Jan 1 2001	S.A.W. UNDER APPLICATION FOR AGRICULTURAL PURPOSES

IMPORTANT NOTICES

Areas under which a special regulations, limitations or conditions exist that affect mineral prospecting, mining and mineral development activities.

2.22099
DRILL

42A05NE2043 2.22099 GODFREY

General Information and Limitations

Contact Information:
Provincial Mining Registrar's Office
1000 Main Street, Suite 1000
Timmins, Ontario, Canada
Toll Free: 1-800-387-1515
Fax: 705-271-6744
E-mail: 1-877-676-5444

Map Datum: NAD 83
Projection: UTM (5 degree)
Topographic Data Source: Land Information Ontario
North: True North
Mineral and Land Use Information Contact:
Ministry of Northern Development and Mines
Home Page: www.gov.on.ca/MNR/DNR/MNS/LAND/ENGLISH/ENGLISH

This map is not intended to be used as a legal document and should not be used for legal purposes. It is provided for informational purposes only. The Ministry of Northern Development and Mines is not responsible for any errors or omissions in this map. The user assumes all liability for any use of this map.