

October 20,2003

ROUSSEAU TURNBULL PROPERTY

Owners Maureen Rousseau and Marcel Denis Morais
 PO Box 2122 Jaguar road
 Timmins, On Timmins, On
 P4N 7X8

Property consists of 9 units, #1243812

LOCATION

The property is located approximately 25 kilometers west of Timmins in the south-west quadrant of Turnbull township in the vicinity of Robb creek.

Commodity: Gold, Flux

Access

The access to the property is excellent. 20 kilometers on the Malette road off Highway 101 west and 5 km on a lumber road to the center of the claim. Walking is easy on an old bush road to the showings.

Previous to staking, there was an old pit 5x5, 6 ft. deep that looked good for gold. These pits were done by old prospectors.

Showing #1

Assays were taken in July 2001 and July 2002. Results are included in the reports. The assays were taken from rock samples that yielded low gold values.

Stripping was done by a 4x4 460 Catapillar backhoe. A quartz vein was uncovered. This vein was 30ft wide and 35 ft in length in a NW 30 dipping vertically and open at both ends with a gabro contact to the west. This could be a good flux product.

A channel sample is planned for the future



42A05NE2050 2.25922 TURNBULL

259 259

Showing #2

Results of the assays taken in August 2001 are included in the report. All assays showed low gold values.

Again the old pits were stripped by backhoe and an area 30ft in length and 25 feet wide was opened up. The same quartz vein seems to come through this area also, but in this location the Pyrite is more abundant. The contact zone is greenstone (andesite). Again a gabbro contact to the west.

Channel sampling is planned for the future.

Attached

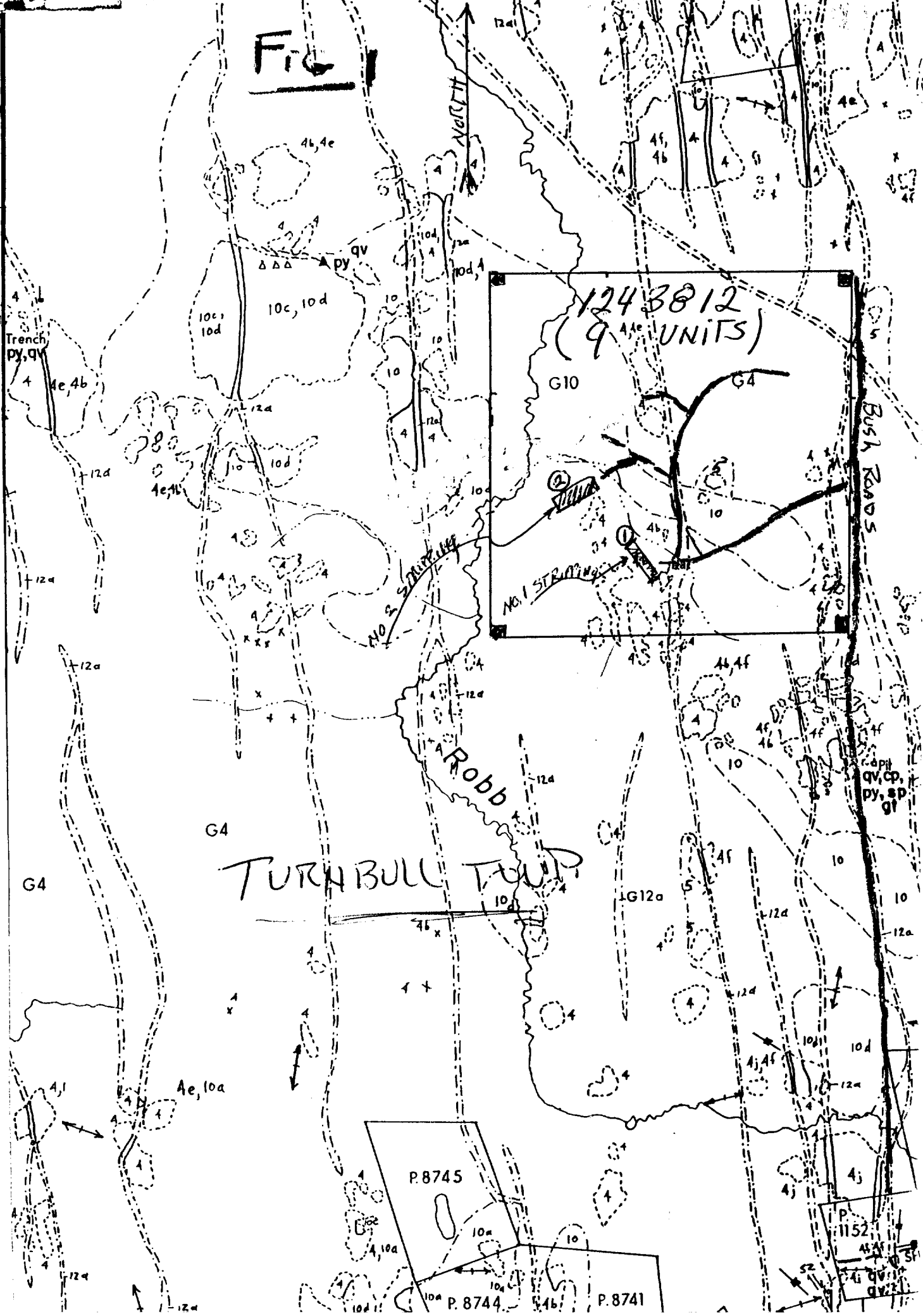
Fig. #1 Taken from Preliminary Map P.966

Fig. #2 Taken from Preliminary map P. 966

Fig. #3 Claim Map Turnbull Twp.

J. R. Cousens

FIG 1



beach deposits

Fig 2

PRECAMBRIAN

EARLY TO MIDDLE PRECAMBRIAN

MAFIC INTRUSIVE ROCKS

DIABASE

- 12 12a Diabase (dikes)
12b Olivine diabase (dikes)

EARLY PRECAMBRIAN

LAMPROPHYRE (age unknown)

- 11 11 Lamprophyre (dikes)

Intrudes 7 other contacts indeterminate

LATE FELSIC INTRUSIVE ROCKS

- 10 10 Unsubdivided
10a Granitic rocks, aplite dikes
10b Quartz monzonite
10c Granodiorite
10d Hybrid rocks, agmatite

Contact Indeterminate

MAFIC INTRUSIVE ROCKS

- 9 9a Gabbro, porphyritic gabbro¹
9b Basalt dikes²

LATE INTERMEDIATE TO MAFIC INTRUSIVE ROCKS³

- 8 8 Unsubdivided
8a Granophyric microdiorite
8b Spherulitic quartz-feldspar microdiorite
8c Porphyrite (intrusive andesite)
8d Feldspar porphyry-microdiorite

Intrusive Contact

EARLY FELSIC INTRUSIVE ROCKS

- 7 7 Unsubdivided
7a Granophyric quartz-albite porphyry, trond-hjemite
7b Granitic dikes (aplite)
7c Vesicular quartz porphyry
7d Hybrid rocks

Contact Transitional

EARLY FELSIC TO INTERMEDIATE INTRUSIVE ROCKS

- 6 6 Granophyric quartz diorite (may be transitional between 4 and 6)

Contact Indeterminate

- 5 5 Andesite porphyry, dacite porphyry, basalt porphyry (may include some 4b and may be derived from 4)

Transitional and Intrusive Contact

EARLY MAFIC AND ULTRAMAFIC INTRUSIVE ROCKS

- 4 4 Unsubdivided
4a Layered norite-gabbro, anorthositic gabbro
4b Diabasic gabbro
4c Gloweroporphyritic anorthositic gabbro (leucocratic)
4d Unlayered anorthosite (leucocratic gabbro)
4e Hornblende gabbro, tremolitic gabbro, pegmatic gabbro
4f Massive fine-grained gabbro (may include some 1a and 9b)
4g Coarse-grained gabbro porphyry
4h Fine-grained gabbro (basalt) porphyry (may be related to ?)
4i Quartz gabbro⁶
4j Foliated porphyritic gabbro (may include some 1c)
4k Serpentine, peridotite, dunite⁷

Intrusive Contact



Established 1928

Swastika Laboratories Ltd

Assaying - Consulting - Representation

Assay Certificate

2W-1534-RA1

Company: BOB ROUSSEAU

Date: JUL-04-02

Project:

Attn: B. Rousseau

We hereby certify the following Assay of 5 Rock samples
submitted JUN-23-02 by .

| Sample Number | Au g/tonne | Au Check g/tonne |
|------------------|---------------|---------------------|
| R#1 | 0.03 | 0.02 |
| R#2 | 0.01 | - |
| R#3 | Nil | 0.01 |
| R#4 | Nil | - |
| R#5 | 0.01 | - |

One assay ton portion used.

Certified by



Established 1928

Swastika Laboratories Ltd

Assaying - Consulting - Representation

Geochemical Analysis Certificate

1W-1678-RG1

Company: **R. Rousseau**

Date: JUL-28-01

Project:

Attn:

We hereby certify the following Geochemical Analysis of 1 ROCK samples submitted JUL-20-01 by .

| Sample Number | Au g/tonne | Au Check g/tonne |
|------------------|---------------|---------------------|
| T-2 | 0.04 | 0.06 |

12.31

Certified by



Established 1928

Swastika Laboratories Ltd

Assaying - Consulting - Representation

Assay Certificate

1W-1850-RA1

Company: **R. ROUSSEAU**

Date: AUG-15-01

Project:

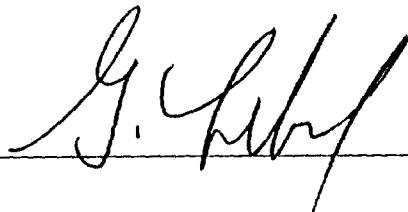
Attn:

We hereby certify the following Assay of 8 ROCK samples submitted AUG-09-01 by .

| Sample Number | | Au g/tonne | Au Check g/tonne | |
|---------------|--------------------------|------------|------------------|-----------------|
| R-1 | BLUE QUARTZ | 0.06 | - | } TURNBULL TWP. |
| R-2 | | 0.01 | - | |
| R-3 | QUARTZ PYRITE STRONGER | 0.18 | 0.18 | |
| R-4 | HEAVY GLOSSY AN SPECK CU | 0.15 | - | |
| R-5 | | Nil | - | } OTHER AREA, |
| R-6 | | 0.01 | - | |
| R-7 | | Nil | - | |
| R-8 | | Nil | - | |

\$ 98.14

One assay ton used.

Certified by 



Established 1928

Swastika Laboratories Ltd

Assaying - Consulting - Representation

Assay Certificate

1W-1986-RA1

Company: **BOB ROUSSEAU**

Date: AUG-31-01

Project:

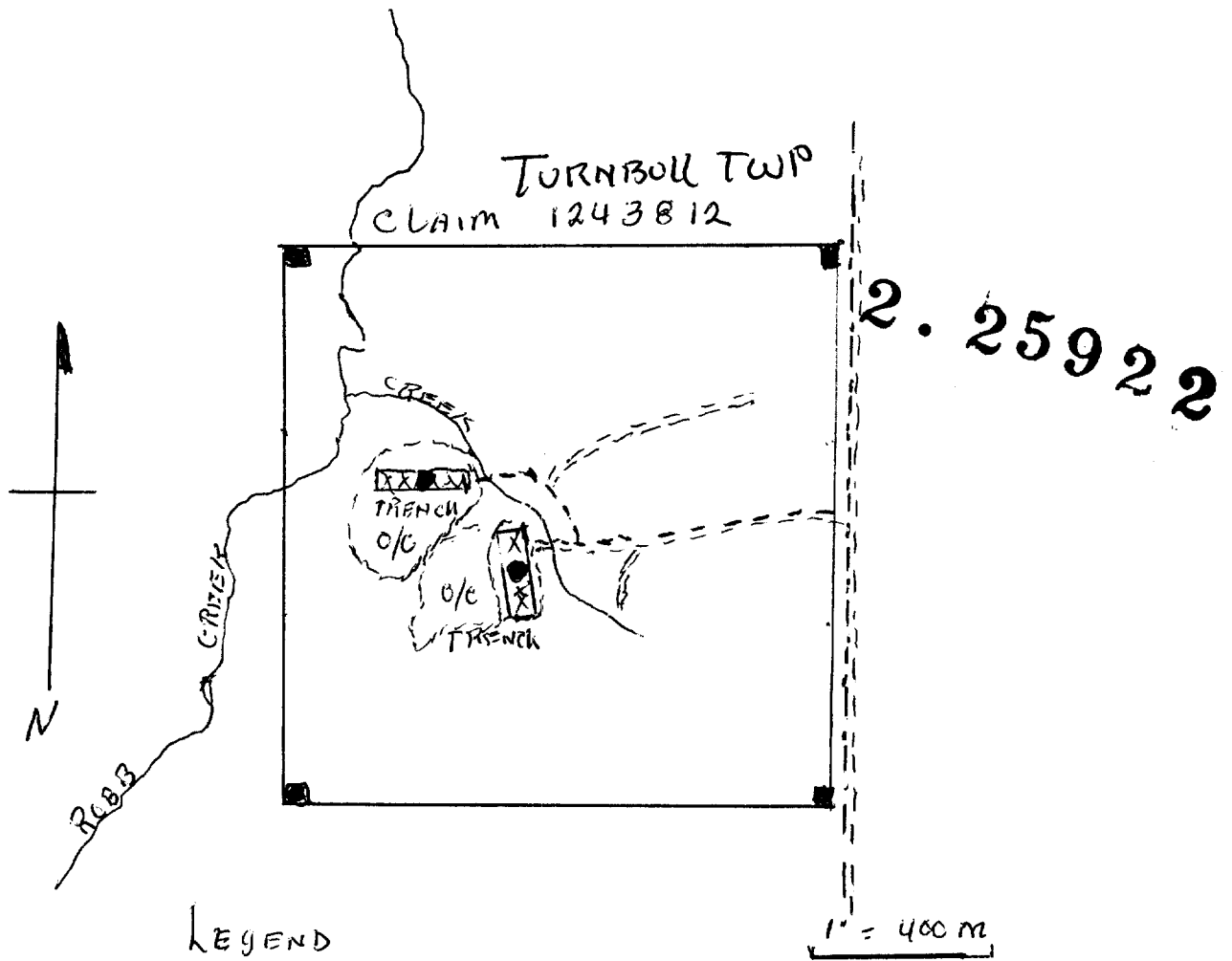
Attn:

We hereby certify the following Assay of 2 ROCK samples submitted AUG-24-01 by .

| Sample Number | Au g/tonne | Au check g/tonne |
|---------------|------------|------------------|
| S-1 | 0.06 | 0.08 |
| S-2 | 0.02 | - |

\$ 24.61

Certified by



LEGEND

- XXXXXX TRENCH
- PIT
- ROAD
- O/C OUTCROPT

RECEIVED
 JUL - 9 2003
 GEOSCIENCE ASSESSMENT
 OFFICE

RECEIVED
 JUL 08 2003
 @8:33 am (c) *ur*
 MLC OFFICE
 PORCUPINE MINING DIVISION

RECEIVED FROM
REÇU DE ROBERT ROUSSEAU

DATE AUG 25 2001

THREE HUNDRED Dollars

FOR
POUR STRIPPING TURNBULL TWP.

FROM
DE AUG 2001

TO
A AUG 2001

BY
PAR [Signature]

\$ 300.00

Tax Reg. No.
No. d'enrg. taxe

BLUELINE A 2550 B

RECEIVED FROM
REÇU DE ROBERT ROUSSEAU

DATE AUG. 7 2001

FOUR HUNDRED AND FIFTY Dollars

FOR
POUR STRIPPING IN TURNBULL TWP.

FROM
DE July / 01

TO
A

BY
PAR [Signature]

\$ 450.00

Tax Reg. No.
No. d'enrg. taxe

BLUELINE A 2550 B

① TYPE OF EQUIPMENT

BACKHOE 4x4 460 CAT

② THE \$750.00 SUBMITTED ON P. 4
INCLUDES THE OPERATOR & BACKHOE
(P. 4 SUBMISSION NO 2, 25922)

24 hour service
Pager 360-2724
(Leave Message)

Bob Lamthe
Tel. 268-7655
Mobile 360-2882

Bob's CONTRACTING

General Contracting - Residential & Industrial
Snow Removal - Equipment Rental
Petroleum Waste Management Certificate
Septic Systems Certificate

WE DO MINING EXPLORATION AND STRIPPING!

Date: 2003-NOV-03

GEOSCIENCE ASSESSMENT OFFICE
933 RAMSEY LAKE ROAD, 6th FLOOR
SUDBURY, ONTARIO
P3E 6B5

A. MAUREEN ROUSSEAU
P.O. BOX 2122
TIMMINS, ONTARIO
P4N 7X8 CANADA

Tel: (888) 415-9845
Fax: (877) 670-1555

Submission Number: 2.25922
Transaction Number(s): W0360.01110

Dear Sir or Madam

Subject: Approval of Assessment Work

We have approved your Assessment Work Submission with the above noted Transaction Number(s). The attached Work Report Summary indicates the results of the approval.

At the discretion of the Ministry, the assessment work performed on the mining lands noted in this work report may be subject to inspection and/or investigation at any time.

The revisions outlined in the Notice dated September 17, 2003 have in part been corrected. Accordingly, assessment work credit has been approved as outlined on the Declaration of Assessment Work Form that accompanied this submission.

NOTE: On future submissions ensure you include a "detailed map" of the area worked. This generally represents @ 80% of the value of a physical work submission. Several examples are enclosed.

If you have any question regarding this correspondence, please contact BRUCE GATES by email at bruce.gates@ndm.gov.on.ca or by phone at (705) 670-5856.

Yours Sincerely,



Ron C. Gashinski
Senior Manager, Mining Lands Section

Cc: Resident Geologist

Robert Roger Rousseau
(Agent)

A. Maureen Rousseau
(Assessment Office)

Assessment File Library

A. Maureen Rousseau
(Claim Holder)

Marcel Denis Morais
(Claim Holder)

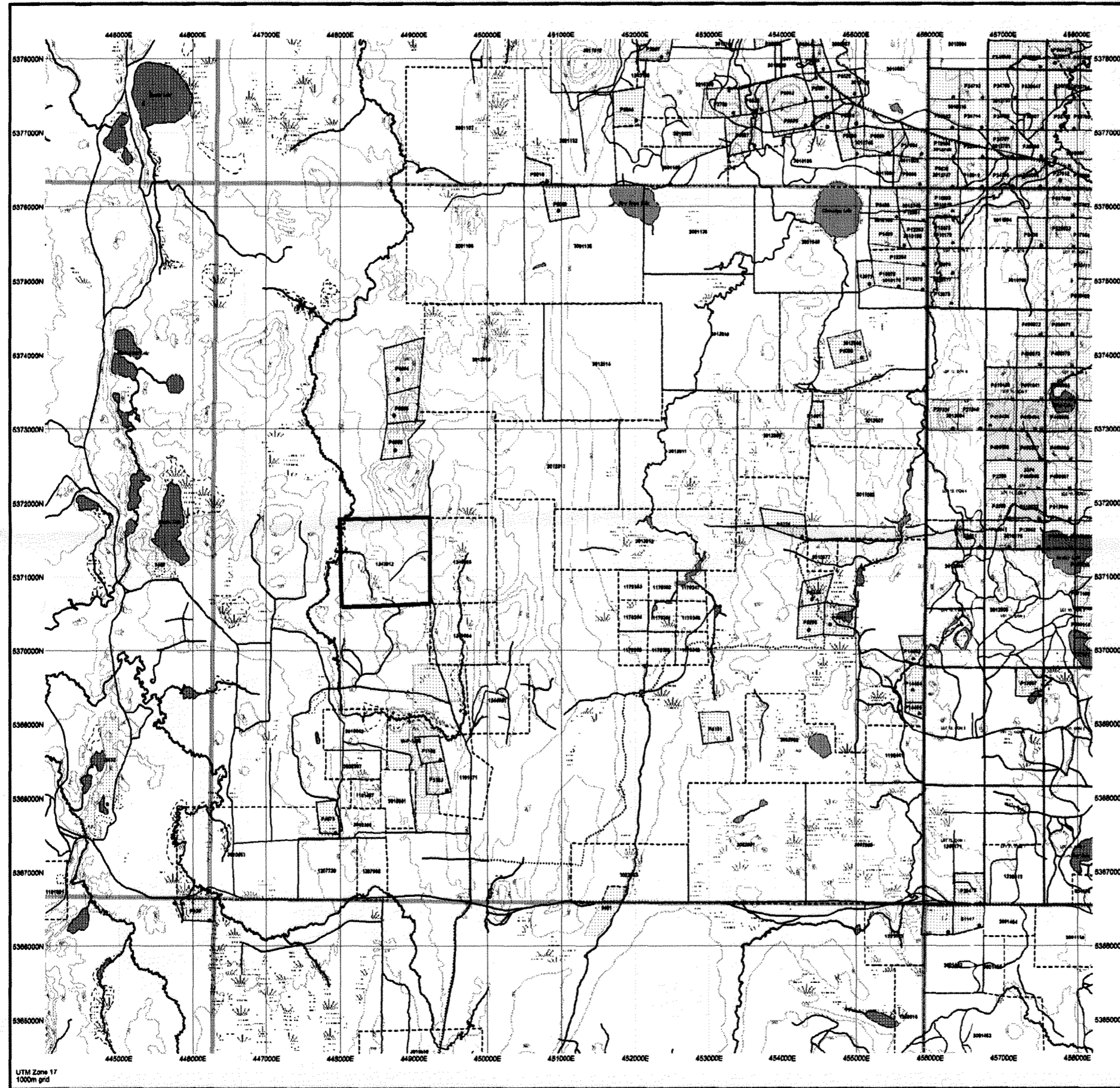
Date / Time of Issue: Tue Nov 04 10:57:20 EST 2003

TOWNSHIP / AREA
TURNBULL

PLAN
G-3250

ADMINISTRATIVE DISTRICTS / DIVISIONS

Mining Division Porcupine
Land Titles/Registry Division COCHRANE
Ministry of Natural Resources District TIMMINS



TOPOGRAPHIC

- Administrative Boundaries
- Township
- Countdown Lot
- Provincial Park
- Indian Reserve
- Crit. P.L. & P.H.
- Outline
- Water Sheds
- Water Headwaters
- Roadway
- Road
- Tail
- Return Ore Pipeline
- Utilities
- Tower

Land Tenure

Proposed Patent

- Surface And Mining Rights
- Surface Rights Only
- Mining Rights Only

Leasable Patent

- Surface And Mining Rights
- Surface Rights Only
- Mining Rights Only

License of Occupation

- User Not Specified
- Surface And Mining Rights
- Surface Rights Only
- Mining Rights Only
- Lease Use Permit
- Order to Cease (Not open for bidding)
- Water Power License Agreement
- Mining Claim
- Filed Only Mining Claims

LAND TENURE WITHDRAWALS

- Area Withdrawn From Disposition
- Mining Claim Withdrawal Types
- Surface And Mining Rights Withdrawal
- Surface Rights Only Withdrawal
- Mining Rights Only Withdrawal
- Order to Cease Withdrawal Types
- Surface And Mining Rights Withdrawal
- Surface Rights Only Withdrawal
- Mining Rights Only Withdrawal

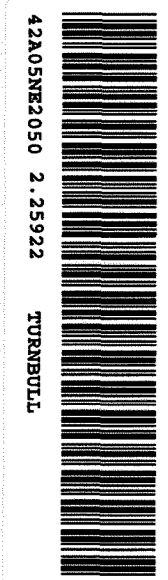
IMPORTANT NOTICES



LAND TENURE WITHDRAWAL DESCRIPTIONS

| Locator | Type | Date | Description |
|---------|------|--------------|---|
| 339 | W | Jan 1, 2001 | PROPOSED SURFACE RIGHTS DISPOSITION UNDER P.L.A. NOTICE RECEIVED |
| 339 | W | Jan 1, 2001 | MINING RIGHTS |
| 339 | W | Jan 1, 2001 | PENDING APPLICATION UNDER THE PUBLIC LANDS ACT NOTICE RECEIVED BY |
| 339 | W | Nov 22, 1991 | PENDING APPLICATION UNDER THE SURFACE RIGHTS ACT NOTICE RECEIVED BY |
| 340 | W | Jan 1, 2001 | PENDING APPLICATION UNDER THE SURFACE RIGHTS ACT NOTICE RECEIVED BY |
| 341 | W | Jan 1, 2001 | AGREEMENT PERMIT - NOTICE RECEIVED JUNE 18, 1993 |
| 342 | W | Jan 1, 2001 | NO SURFACE RIGHTS |
| 343 | W | Jan 1, 2001 | Surface Rights Only |
| 344 | W | Jan 1, 2001 | Surface Rights Only |
| 345 | W | Jan 1, 2001 | Surface Rights Only |
| 346 | W | Jan 1, 2001 | Surface Rights Only |
| 347 | W | Jan 1, 2001 | Surface Rights Only |
| 348 | W | Jan 1, 2001 | Surface Rights Only |
| 349 | W | Jan 1, 2001 | Surface Rights Only |
| 350 | W | Jan 1, 2001 | Surface Rights Only |
| 351 | W | Jan 1, 2001 | Surface Rights Only |
| 352 | W | Jan 1, 2001 | Surface Rights Only |
| 353 | W | Jan 1, 2001 | Surface Rights Only |
| 354 | W | Jan 1, 2001 | Surface Rights Only |
| 355 | W | Jan 1, 2001 | Surface Rights Only |
| 356 | W | Jan 1, 2001 | Surface Rights Only |
| 357 | W | Jan 1, 2001 | Surface Rights Only |
| 358 | W | Jan 1, 2001 | Surface Rights Only |
| 359 | W | Jan 1, 2001 | Surface Rights Only |
| 360 | W | Jan 1, 2001 | Surface Rights Only |

2.25922
PSTRIP
PTRNCH
PMAN



These mining claims should be searched with the Provincial Mining Records Office of the Ministry of Northern Development and Mines to find out the status of the claims shown herein. This map is not intended for legal purposes. It is a summary of the information shown on the map as compiled from various sources. Compensation and accuracy are not guaranteed. Additional information may also be obtained through the Provincial Mining Records Office, or the Ministry of Natural Resources.

General Information and Limitations
Source: Information from Provincial Mining Records Office
This map may not show unregistered mineral claims and other mining claims, leases, agreements, rights or other mining rights, interests or other forms of mineral or other land rights or claims. Also note that some mineral claims are not shown on this map. For more information, contact the Provincial Mining Records Office.

This map may not show unregistered mineral claims and other mining claims, leases, agreements, rights or other mining rights, interests or other forms of mineral or other land rights or claims. Also note that some mineral claims are not shown on this map. For more information, contact the Provincial Mining Records Office.