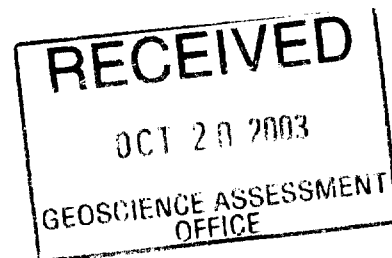


Assessment Report on Lithogeochemical Sampling

Godfrey Twp., Porcupine Mining Division

NTS 42A-05

2. 26479



Prepared by:

Dean Rogers, P. Geo
Senior Project Geologist
Falconbridge Limited



42A05NE2051 2.26479 GODFREY

Table of Contents

Table of Contents	2
Introduction	3
Property	3
Location & Access	3
Previous Work	4
Survey Description	4
Survey Results	5
<i>Litho geochemistry</i>	5
<i>Assay Results</i>	5
Conclusions and Recommendations	5
Statement of Qualifications	6
Appendices	7

Introduction

A small lithochemical sampling program was undertaken in May, 2003 over claims currently controlled under a Joint Venture Agreement between Falconbridge Limited and Explorers Alliance Corporation. The aim of the survey was to collect data as to the whole rock geochemical signature of volcanic rocks on the property as well as to identify any anomalous base or precious metal mineralization. Samples were collected by L. Bonhomme, a prospector employed by Explorer's Alliance Corporation and P. Caldbick, a consulting geologist on contract to Explorer's Alliance Corporation.

Property

Sampling was performed on 2 mining patents currently owned by Falconbridge Limited as well as two unpatented mining claims currently registered to John Huot but held in trust by Explorers Alliance Corporation. All mining properties on which the sampling was performed are currently subject to a Joint Venture Agreement between Falconbridge and Explorers Alliance.

Location & Access

The property is located in central Godfrey Twp., Porcupine Mining Division approximately 20km west of the City of Timmins (Fig. 1). Access to the property is attained via the Kamiskotia Highway approximately 13km north of Hwy. 101 West. From this point a series of logging roads and bush trails provide access to the specific property location.

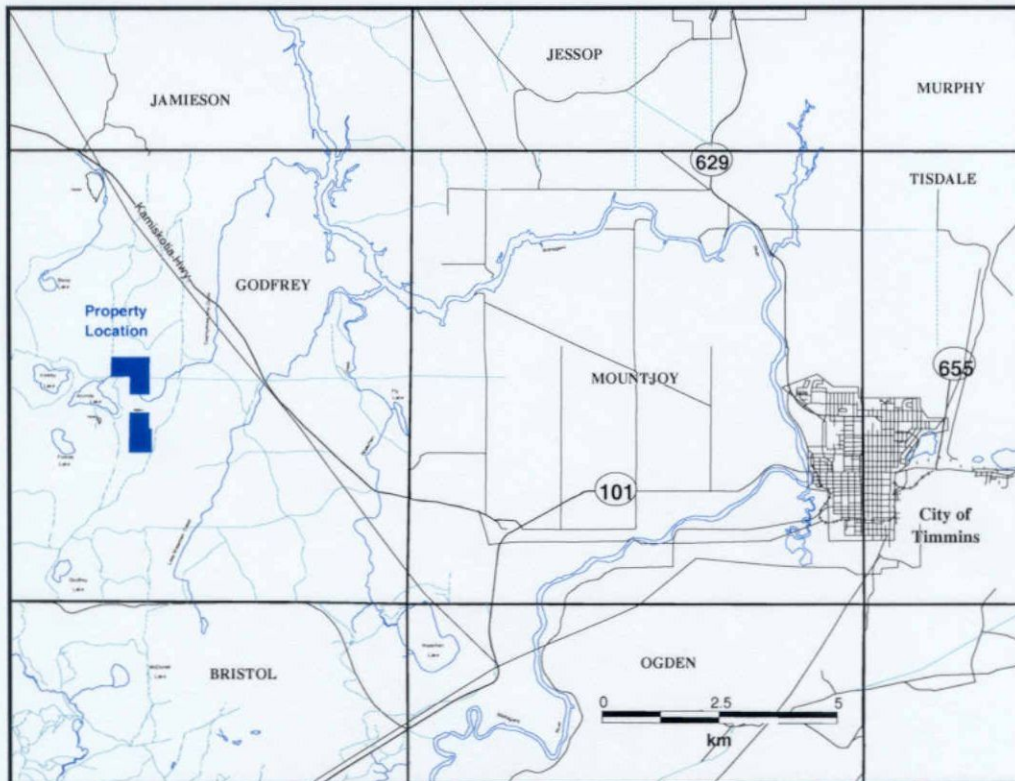


Fig. 1 – Property Location

Previous Work

A significant amount of historical work has been performed in the general Godfrey area however work in the specific survey area has been somewhat limited. Maple Bay Copper Mines performed diamond drilling of approximately 380m in 4 holes in 1961 and P.J. O'Neil drilled a total of 409m in 7 holes between 1958 to 1964. The most significant work in the area however has been by Falconbridge Limited during the course of exploration around the Genex Deposit located approximately 1km to the west. Still work performed specifically on within the current survey area is sparse. A brief summary of work performed on the property by FL is listed in the table below.

Year	Work Type
1988	Line-cutting & HLEM
	Diamond Drilling (G33-03)
1991	Diamond Drilling (G33-15)
2000	Airborne Geophysical Surveying

Survey Description

Lithochemical sampling was performed on available outcrop within the survey area using geological hammers and chisels. Existing roads/trails, claim lines and GPS locating equipment were used for orientation and locating of sample stations. Samples were collected for both whole rock analysis (WR) and assay sampling (MEX) however where required, duplicate samples were taken at some sites to avoid any significant sulphide mineralization for the whole rock analysis. A single sample was also submitted for Rare Earth Element (REE) analysis for more detailed investigation of the nature of the volcanic rock. In all, a total of nine samples were collected and submitted for analysis. A listing of the samples along with UTM coordinates is provided in the table below.

Sample #	Sample Type	Easting (NAD 83)	Northing (NAD 83)
#52716	WR, MEX	459,560	5,370,165
#52717	WR, MEX	459,560	5,370,161
#52718	WR, MEX	459,548	5,370,117
#52720	WR, MEX	459,564	5,370,135
#52721	WR, MEX	459,564	5,370,135
#52723	WR, MEX	459,616	5,371,013
#52725	WR, MEX, REE	459,607	5,371,011
#52726	WR, MEX	459,615	5,371,013
#52727	WR, MEX	459,615	5,371,013

Whole rock geochemical samples were submitted to SGS labs for analysis by X-Ray Fluorescence while the assay samples were sent to Swastika Laboratories Ltd. for Atomic Absorption analysis. Neutron Activation Rare Earth Element analysis were completed by Becquerel Laboratories in Mississauga, Ont.

Survey Results

Sample locations are presented on the map contained in the back pocket of this report.

Lithochemistry

Samples 52716, 52717, 52718, 52725 & 52727 all returned whole rock geochemistry suggestive of a felsic volcanic protolith. Other samples taken returned mafic to intermediate geochemistry except for 52721 which had an extremely high Loss on Ignition value and was therefore likely strongly carbonate altered. Moderate to strong alteration, as evidenced by low Na₂O values, was apparent in the samples, from both the northern and southern sample areas. Zr/Y trace element ratios were relatively low (<5) suggestive of a tholeiitic magmatic affinity for most of the samples.

Assay Results

Assay results from most of the samples were relatively low with the exception of samples 52726 & 52727 which returned Cu assays of 4.56% and 0.43% respectively. These samples consisted of weak vein Cu mineralization hosted within felsic volcanic rocks.

Conclusions and Recommendations

The presence of altered, tholeiitic felsic volcanic rocks is considered highly prospective for VMS-style base-metal mineralization. Combined with the elevated Cu values obtained from assay samples, this provides further encouragement for the area to host an economic base-metal deposit. A review of previous geophysical surveys including both ground and airborne surveys is recommended in order to possibly identify any untested geophysical conductors in the central Godfrey area.

Statement of Qualifications

I, Dean Rogers, declare that;

- 1) I am a geologist with residence in Porcupine, Ontario and am presently employed in this capacity with Falconbridge Limited.
- 2) I obtained an Honours Bachelor's Degree in Geology from the University of Toronto in 1994.
- 3) I have been continuously employed and practiced my profession since 1995.
- 4) I am a member in good standing of the Association of Professional Geoscientists of Ontario (member #667).
- 5) I am a fellow of the Geological Association of Canada and a member in good standing of the Prospectors and Developers Association of Canada and the Canadian Institute of Mining and Metallurgy.



Dean Rogers
Senior Project Geologist
Falconbridge Limited

Oct. 14/03
Date

Appendices

- 1) Lab Certificates
- 2) Sample Location Map (back pocket)



Work Order: 072969

Date: 23/06/03

FINAL

Page 1 of 2

Element	SiO2	Al2O3	CaO	MgO	Na2O	K2O	Fe2O3	MnO	TiO2	P2O5	Cr2O3	LOI	Sum	Rb	Sr	Y
Method	XRF102	XRF102	XRF102	XRF102	XRF102	XRF102	XRF102	XRF102	XRF102	XRF102	XRF102	XRF102	XRF102	XRF102	XRF102	XRF102
Units	%	%	%	%	%	%	%	%	%	%	%	%	%	ppm	ppm	ppm
52716A	72.36	12.34	0.09	0.30	3.82	1.97	5.49	0.02	0.25	0.02	0.06	2.50	99.32	53	30	87
52717A	80.43	11.24	0.26	0.25	1.87	2.84	1.53	0.02	0.17	0.01	0.08	1.35	100.2	68	20	105
52718A	71.71	13.83	1.61	0.71	3.17	3.03	2.53	0.05	0.36	0.06	0.06	1.85	99.09	83	55	57
52719A	58.27	12.55	4.47	1.65	1.25	3.33	9.10	0.13	1.64	0.34	0.04	4.05	96.92	93	54	49
52720A	68.57	11.45	0.52	0.53	1.03	3.54	9.48	0.02	0.35	0.05	0.08	4.35	100.1	90	20	61
52721A	21.90	3.88	0.05	0.29	0.12	1.39	49.07	<0.01	0.14	0.03	0.05	23.40	100.4	42	10	16
52722A	35.32	17.05	8.76	3.48	2.75	3.52	13.34	0.35	1.75	0.10	0.03	11.55	98.13	60	106	27
52723A	47.97	4.94	0.14	0.49	0.08	1.28	30.40	0.03	0.16	0.03	0.10	14.90	100.5	40	6	28
52724A	35.88	12.28	7.30	7.43	0.11	3.60	15.13	0.29	1.13	0.12	0.03	16.70	100.1	68	45	26
52725A	77.65	9.90	0.12	0.47	0.13	2.86	5.21	0.01	0.35	0.01	0.11	3.55	100.5	97	11	53
52726A	65.79	6.41	0.14	0.96	<0.01	0.61	8.62	0.05	0.19	0.04	0.08	5.05	87.94	27	15	34
52727A	75.13	10.67	0.04	0.71	0.09	2.41	6.06	0.04	0.25	0.02	0.10	2.90	98.54	60	19	66
52728A	44.00	13.75	8.64	3.39	0.14	3.35	13.52	0.32	1.37	0.13	0.02	11.20	99.94	76	58	29
52729	63.61	14.14	2.75	3.20	4.76	0.56	6.33	0.12	0.99	0.11	0.12	2.25	99.00	17	128	15
52730	55.20	15.84	7.19	4.01	5.57	0.34	7.47	0.16	1.07	0.12	0.09	1.50	98.64	18	207	15
*Dup 52716A	72.28	12.33	0.09	0.30	3.84	1.97	5.48	0.02	0.25	0.02	0.06	2.50	99.25	53	31	87
*Dup 52726A	43.93	13.74	8.64	3.39	0.14	3.33	13.52	0.32	1.36	0.13	0.02	11.20	99.83	77	57	29



Work Order: 072969

Date: 23/06/03

FINAL

Page 1 of 2

Element Symbol et. Ltm. Units	Zr XRF102 2 ppm	Nb XRF102 2 ppm	Ba XRF102 20 ppm
52716A	213	15	356
52717A	336	22	534
52718A	217	17	525
52719A	265	9	419
52720A	220	13	543
52721A	45	5	293
52722A	104	6	941
52723A	143	10	171
52724A	89	3	411
52725A	249	12	388
52726A	228	11	150
52727A	366	18	380
52728A	86	6	653
52729	76	6	234
52730	74	6	244
*Dup 52716A	213	15	357
*Dup 52728A	86	6	653



Established 1928

Swastika Laboratories Ltd

Assaying - Consulting - Representation

Geochemical Analysis Certificate

3W-1924-RG1

Company: **COLBERT DRILLING**

Date: JUN-11-03

Project: **Maisville/Godfrey**

Attn: **L. Bonhomme**

We hereby certify the following Geochemical Analysis of 15 Core samples submitted JUN-03-03 by .

Sample Number	Au Au Check PPB PPB	Ag PPM	Cu PPM	Cu %	Pb PPM	Zn PPM	WRA	Rare Earth
52716A	19 -	0.2	35	-	11	18	Results	Results
52717A	5 -	0.1	9	-	1	50	to	to
52718A	Nil -	0.1	10	-	1	21	follow	follow
52719A	Nil -	0.2	36	-	3	99		
52720A	77 -	0.7	39	-	22	20		
52721A	658 -	8.6	128	-	170	36		
52722A	24 -	1.9	163	-	1	81		
52723A	27 -	2.7	602	-	7	802		
52724A	19 -	0.1	85	-	1	112		
52725A	31 -	1.0	60	-	442	400		
52726A	Nil -	117.6	>10000	4.56	95	1020		
52727A	14 -	10.4	4280	-	21	606		
52728A	Nil 3	0.1	186	-	1	94		
52729	5 -	0.1	75	-	1	70		
52730	Nil -	0.1	90	-	1	47		

Certified by Doris Chantre

Results of Analysis

1 of 1

Client: Swastika Laboratories
 1 Cameron Ave., P.O. Box 10
 Swastika, Ontario, Canada, P0K 1T0

T03-00544.0

Becquerel
LABORATORIES

6790 Kitimat Rd., Unit #4
 Mississauga, ON, Canada, L5N 5L9
 Ph: (905) 826-3080 Fax: (905) 826-4151
 email: ballen@becquerellabs.com

Date Received : 11-Jun-03

Date Reported : 27-Jun-03

Samples were run as received.

Analysis performed by Neutron Activation (Method BQ-NAA-1)

A negative result denotes "Less Than"

Reference # 3W-1924-RG1

Sample I.D.	Wt grams	Ce ppm	Eu ppm	La ppm	Lu ppm	Nd ppm	Sm ppm	Sc ppm	Tb ppm	Th ppm	U ppm	Yb ppm
1 52724A	2.79	16	0.7	7	0.3	11	3.0	34.8	0.7	-0.5	<+	2.6
2 52725A	2.82	79	1.8	35	0.8	39	9.3	10.0	1.6	4.9	-1	5.5

Approved : _____

Date: 2003-OCT-21

GEOSCIENCE ASSESSMENT OFFICE
933 RAMSEY LAKE ROAD, 6th FLOOR
SUDBURY, ONTARIO
P3E 6B5

FALCONBRIDGE LIMITED
800-207 QUEEN'S QUAY WEST
TORONTO, ONTARIO
M5J 1A7 CANADA

Tel: (888) 415-9845
Fax: (877) 670-1555

Submission Number: 2.26479
Transaction Number(s): W0360.01638

Dear Sir or Madam

Subject: Approval of Assessment Work

We have approved your Assessment Work Submission with the above noted Transaction Number(s). The attached Work Report Summary indicates the results of the approval.

At the discretion of the Ministry, the assessment work performed on the mining lands noted in this work report may be subject to inspection and/or investigation at any time.

If you have any question regarding this correspondence, please contact BRUCE GATES by email at bruce.gates@ndm.gov.on.ca or by phone at (705) 670-5856.

Yours Sincerely,

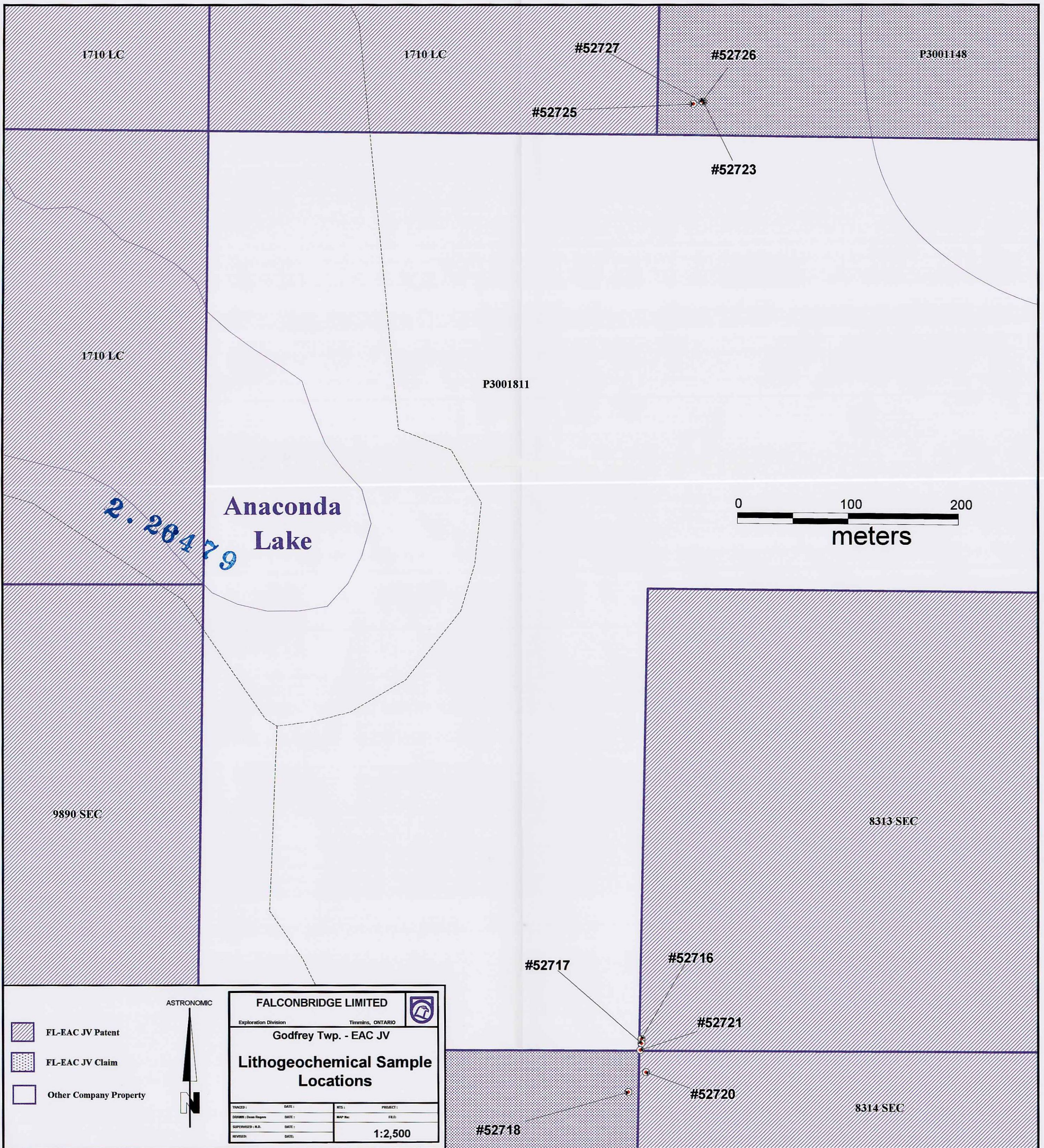


Ron C. Gashinski
Senior Manager, Mining Lands Section

Cc: Resident Geologist
Falconbridge Limited
(Claim Holder)

Assessment File Library
Falconbridge Limited
(Assessment Office)

John Peter Huot
(Claim Holder)



1710 LC

1710 LC

#52727

#52726

P3001148

#52725

#52723

1710 LC

P3001811

Anaconda
Lake

2.26479



9890 SEC

8313 SEC

#52717

#52716

#52721

#52720

8314 SEC

#52718

ASTRONOMIC

FALCONBRIDGE LIMITED

Exploration Division Timmins, ONTARIO

Godfrey Twp. - EAC JV

Lithochemical Sample
Locations

TRACED:	DATE:	WTS:	PROJECT:
DRAWN: Dean Rogers	DATE:	MAP No:	FILE:
SUPERVISOR: J.A.	DATE:	1:2,500	
REVISED:	DATE:		

