



42A05NE8428 34 BRISTOL

010

DIAMOND DRILLING

TOWNSHIP: Bristol

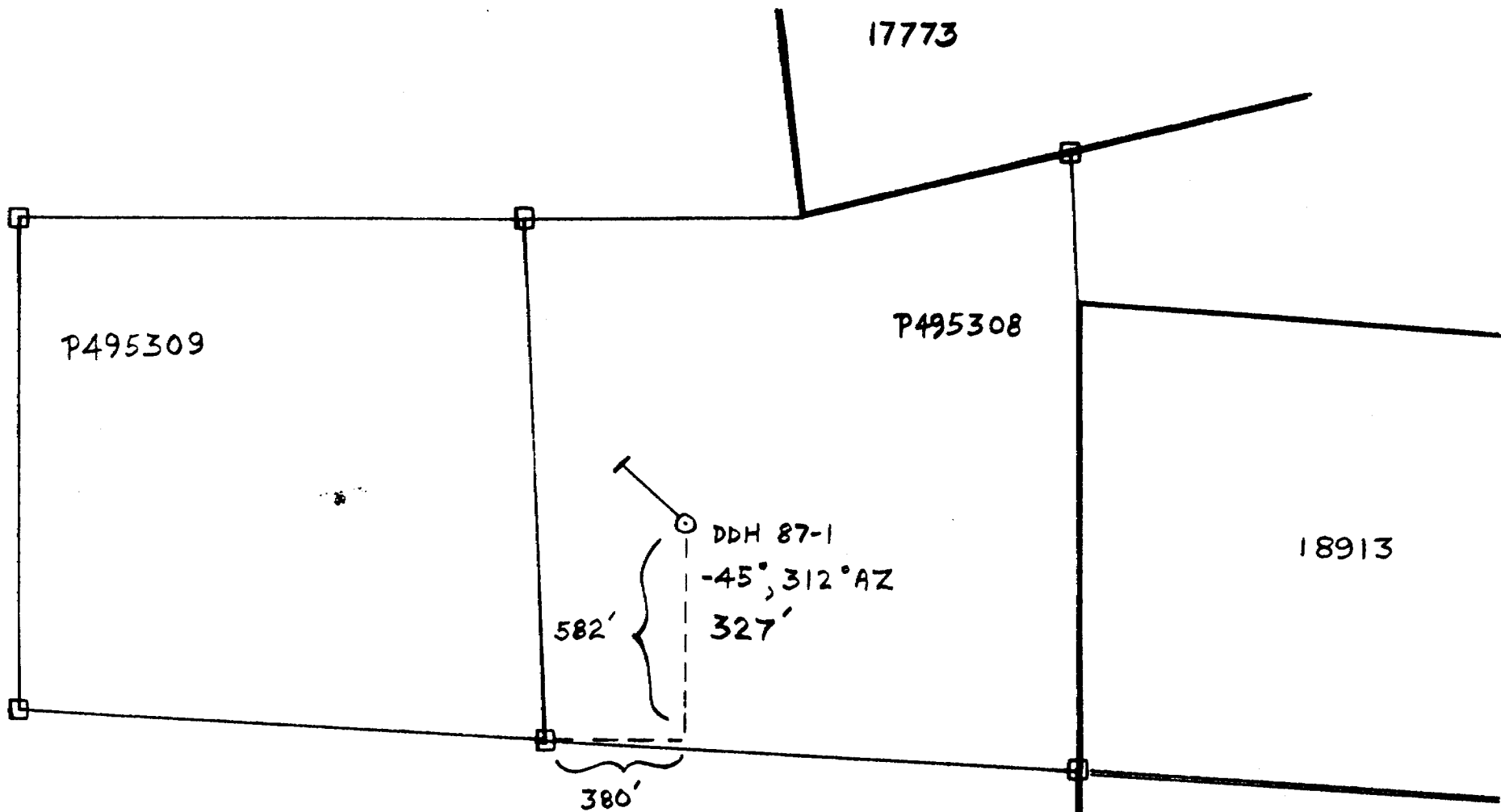
REPORT NO:34

WORK PERFORMED FOR: J.E. Croxall

RECORDED HOLDER: Same as Above [xx]
: Other []

<u>Claim No.</u>	<u>Hole No.</u>	<u>Footage</u>	<u>Date</u>	<u>Note</u>
P 495308	87-1	327'	Nov/87	(1)
	87-2A	134'	Nov/87	(1)
	87-2B	282'	Nov-Dec/87	(1)
P 495308 & P 495309	87-3	569'	Dec/87	(1)


NOTES: (1) #351-87, filed in July/88



HIGHWOOD RESOURCES LTD.
 LOCATION MAP
 DIAMOND DRILL HOLE 87-1

BRISTOL TOWNSHIP




 1000 feet
 scale: 1:5,000

*Robert
 Bald*

DIAMOND DRILL RECORD

NAME OF PROPERTY BRISTOL TOWNSHIP, HIGHWOOD
 HOLE NO. 87-1 LENGTH 327 FEET
 LOCATION CLAIM P495309
 LATITUDE 33+03N DEPARTURE 3+25E
 ELEVATION UNKNOWN AZIMUTH 312° AZ DIP -45°
 STARTED November 13/87 FINISHED November 17, 1987

FOOTAGE	DIP	AZIMUTH	FOOTAGE	DIP	AZIMUTH
200'	-45°				
327'	-47°				

HOLE NO. 87-1 SHEET NO. 1 of 7

REMARKS _____

LOGGED BY R. Bald

FOOTAGE		DESCRIPTION	SAMPLE			ASSAYS					
FROM	TO		NO.	% SULPHIDES	FOOTAGE			%	%	OZ/TON	OZ/TON
					FROM	TO	TOTAL				
0'	9'	OVERBURDEN (CASING TO 9 FEET)									
9'	327'	MAFIC VOLCANIC/INTRUSIVE COMPLEX Medium- to coarse-grained; in general, magnetic except for local sections; locally strongly magnetic; massive; locally very coarse-grained (up to 1/2" long mafic minerals, locally zoned dark brown 6 sided garnet crystals which could be mistaken for pyroxene); dark grey to greenish (dark brownish matrix with green spots, possibly epidote replacing plagioclase?); local disseminated pyrite throughout, as fine- to medium-grained crystals; and locally, pyrite is up to 20% as fine- to coarse-grained disseminated crystals, associated with calcite veinlets and pink-brownish colour, magnetic and possibly carbonatized? (from 46.7' to 47.5'; 49.2' to 49.7'; 55.8' to 57.0'); locally,									
			13729		17.4'	18.7'	1.3'				
			13730		31.0'	34.0'	3.0'				
			13718		46.7'	47.5'	0.8'				

ONTARIO GEOLOGICAL SURVEY
 ASSESSMENT FILES
 OFFICE
 MAR 23 1988
 RECEIVED

Robert Bald

DIAMOND DRILL RECORD

NAME OF PROPERTY BRISTOL TOWNSHIP, HIGHWOOD
 HOLE NO. 87-1 SHEET NO. 2 of 7

FOOTAGE		DESCRIPTION	SAMPLE			ASSAYS					
FROM	TO		NO.	% SULPH. IDES	FOOTAGE		%	%	OZ./TON	OZ./TON	
					FROM	TO	TOTAL				
9'	327'	<p>MAFIC VOLCANIC/INTRUSIVE COMPLEX (CON'T)</p> <p>unit is non-magnetic (from 19.0' to 46.5' with magnetic, fine-grained, dark greenish-grey mafic dikes? cutting this unit from 22.2' to 24.3'; 25.1' to 36.6'; 38.2' to 40.0'; 41.4' to 41.6'; 41.8' to 42.3'; 42.5' to 42.8'; similar fine-grained magnetic mafic dikes? from 10.1' to 13.2'; 13.4' to 16.0'; 17.4' to 17.6'; 18.7' to 19.0'; ~50.0' to 55.8'; 60.0' to on; locally medium-grained, possibly mafic volcanic flow, contacts generally sharp, often ground by drillers, and vary from 80° to 20° to core axis, possibly the coarse-grained material intrudes the finer-grained material; local dusting of pyrite, fine-grained disseminations.</p> <p>From 83.1' to 84.4': epidote-rich, dike? with sharp contacts at 20° to core axis, with coarse-grained, up to 1/2" long, dark brown garnet crystals in zones about 1" from the dike margins; center of dike is medium-grained, massive material, non-magnetic.</p>									
			13719		49.2'	49.7'	0.5'				
			13720		55.8'	57.0'	1.2'				
			13731		66.0'	69.0'	3.0'				
			13732		79.0'	82.0'	3.0'				

Roberta Bald

DIAMOND DRILL RECORD

NAME OF PROPERTY BRISTOL TOWNSHIP, HIGHWOOD
 HOLE NO. 87-1 SHEET NO. 3 of 7

FOOTAGE		DESCRIPTION	SAMPLE			ASSAYS			
FROM	TO		NO.	% SULPH IDES	FOOTAGE FROM TO TOTAL	%	%	OZ/TON	OZ/TON
9'	327'	MAFIC VOLCANIC/INTRUSIVE COMPLEX (CONT)							
		Up to ~10% fine-grained, disseminated pyrite from 91.3' to 93.3'; 96.5' to 98.1' with coarse-grained magnetite in veinlets at 97.5'	13721		91.3'	93.3'	2.0'		
		Dike similar to 83.1' to 84.4' from 129.3' to 132.0', non-magnetic, with 2 large, ~1/2" diameter, pyrite crystals at 130.3'; except this dike is fine- to medium-grained, with bluish-turquoise material (suggested by B. Blanchuk to be a serpentine mineral) along contact (similar to 104.2', veinlet is very soft; and contains equant, six-sided, dark brown garnet crystals up to 1/16" diameter.	13722		96.5'	98.1'	1.6'		
		Disseminated chalcopyrite, pyrite and pyrrhotite(?) at 111.2'	13723		110.9'	111.6'	0.7'		
		Fine-grained mafic dike at 121.2', at 40° to core axis, ~1/2" wide	13724		129.3'	132.0'	2.7'		
		Coarse-grained, non-magnetic material, similar to 19.0' to 46.5' and 83.1' to 84.4', as dikes, locally carbonatized, pale pink with green epidote veinlets throughout, locally brick red, aphanitic matrix containing	13733		120.0'	123.0'	3.0'		
			13734		141.0'	144.0'	3.0'		

Robert
Bald

DIAMOND DRILL RECORD

NAME OF PROPERTY BRISTOL TOWNSHIP, HIGHWOOD
 HOLE NO. 87-1 SHEET NO. 487

FOOTAGE		DESCRIPTION	SAMPLE			ASSAYS					
FROM	TO		NO.	% SULPHIDES	FOOTAGE FROM TO TOTAL	%	%	OZ/TON	OZ/TON		
9'	327'	<p>MAFIC VOLCANIC/INTRUSIVE COMPLEX (CON'T)</p> <p>large brown garnet crystals, euhedral to subhedral; sharp contacts; from 156.1' (55° to core axis) to 158.6' (45° to core axis); 161.5' (45° to core axis) to 166.0' (30° to core axis)</p> <p>Coarse-grained, magnetic sections within finer-grained magnetic, dark green mafic to possibly ultramafic material from 140.0' to 140.2'; 146.8' to 152.9'; 158.6' to 160.1'; 166.6' to 168.9'; 169.2' to 169.8' (40° to core axis); 173.4' (40° to core axis) to 173.9'; 174.8' (35° to core axis) to 175.2' (45° to core axis); locally, these coarse-grained sections contain long, ~3/4" long blades of pale green amphibole? with dark brown, coarse-grained garnet crystals between them, and locally milky white quartz interstitial to the mafic minerals; similar dikes from 179.6' (45° to core axis) to 181.5' (50° to core axis); 184.0' (25° to core axis) to 189.2' (variable contact); 189.4' (variable contact) to 190.2' (40° to core axis); 193.9' (40° to</p>	13725		156.1	158.6	2.5'				
			13735		168.0	171.0	3.0'				
			13736		179.6	181.5	1.9'				
			13737		192.0	195.0	3.0'				

Roberta Bald

DIAMOND DRILL RECORD

NAME OF PROPERTY BRISTOL TOWNSHIP, HIGHWOOD
 HOLE NO. 87-1 SHEET NO. 5 of 7

FOOTAGE		DESCRIPTION	SAMPLE			ASSAYS					
FROM	TO		NO.	% SULPHIDES	FOOTAGE		%	%	OZ./TON	OZ./TON	
					FROM	TO	TOTAL				
9'	327'	MAFIC VOLCANIC/INTRUSIVE COMPLEX (CON'T)									
		core axis) to 195.3' (20° to core axis);									
		195.8' (35° to core axis) to 198.5' (~15°)									
		including part of fine-grained,									
		magnetic material at very low									
		angle (~10° to core axis) at 197.3'									
		199.8' (50° to core axis) to 200.4' (70° to									
		core axis), dark green, medium-grained									
		204.4' (35° to core axis) to 205.0' (35°	13738		204.0'	207.0'	3.0'				
		to core axis), locally fine-grained,									
		brown; 206.6' (50° to core axis) to									
		206.9' (~45° to core axis); similar	13739		216.0'	219.0'	3.0'				
		dikes from 221' (contact ground)									
		to 223.4' (35° to core axis); 225.1'									
		(55° to core axis) to 225.3' (50° to									
		core axis) with local distinct mag-									
		netic spots; 227.7' (25° to core axis)	13740		228.0'	231.0'	3.0'				
		to 229.4' (40° to core axis); 230.5'									
		(25° to core axis) to 231' (ground);									
		232.6' (40° to core axis) to 232.8' (40°									
		to core axis), mainly milky white to									
		translucent coarse-grained quartz;									
		236.4' (30° to core axis) to 237.1' (88° to									
		core axis); 241.5' (35° to core axis);	13741		240.0'	243.0'	3.0'				
		to 241.9' (50° to core axis); 245.5' (50°									
		to core axis) to 245.7' (50° to core axis),									
		medium-grained and dark green;									

Roberta Bald

DIAMOND DRILL RECORD

NAME OF PROPERTY BRISTOL TOWNSHIP, HIGHWOOD

HOLE NO. 87-1

SHEET NO. 6 of 7

FOOTAGE		DESCRIPTION	SAMPLE			ASSAYS					
FROM	TO		NO.	% SULPH. IDES	FOOTAGE			%	%	OZ/TON	OZ/TON
					FROM	TO	TOTAL				
9'	327'	MAFIC VOLCANIC/INTRUSIVE COMPLEX (CON'D) Similar dikes from 252.6' (variable contact) to 252.8' (45° to core axis); 253.0' (35° to core axis) to 253.5' (45° to core axis), locally very dark brown-black patches (possibly biotite-rich) and locally containing coarse-grained pyrite; 272.6' (70° to core axis to 273.1' (50° to core axis). From 254.5' to 257.7' and 262.0' to 268.0'; zones with reddish-brown tinge, locally becoming more intensely red coloured, associated with randomly-oriented calcite veinlets, locally containing fine- to medium-grained pyrite; also minor fine-grained pyrite disseminated throughout medium-grained unit; contacts sharp to irregular; variable angles to core axis. Dikes(?) similar to 140.0' to 140.2, etc. (non-magnetic, medium-grained here) from 288.6' to 289.9'; 294.9' to 295.4'; 299.1' to 306.4' (containing short sections of fine-grained, magnetic, dark green mafic material); 309.2'									
			13726		254.5	257.7	3.2'				
			13727	ground core	262.0	266.0	3.6'				
			13728		266.0	268.0	2.0'				
			13742		277.0	280.0	3.0'				
			13743		288.6	289.9	1.3'				
			13744		301.0	304.0	3.0'				

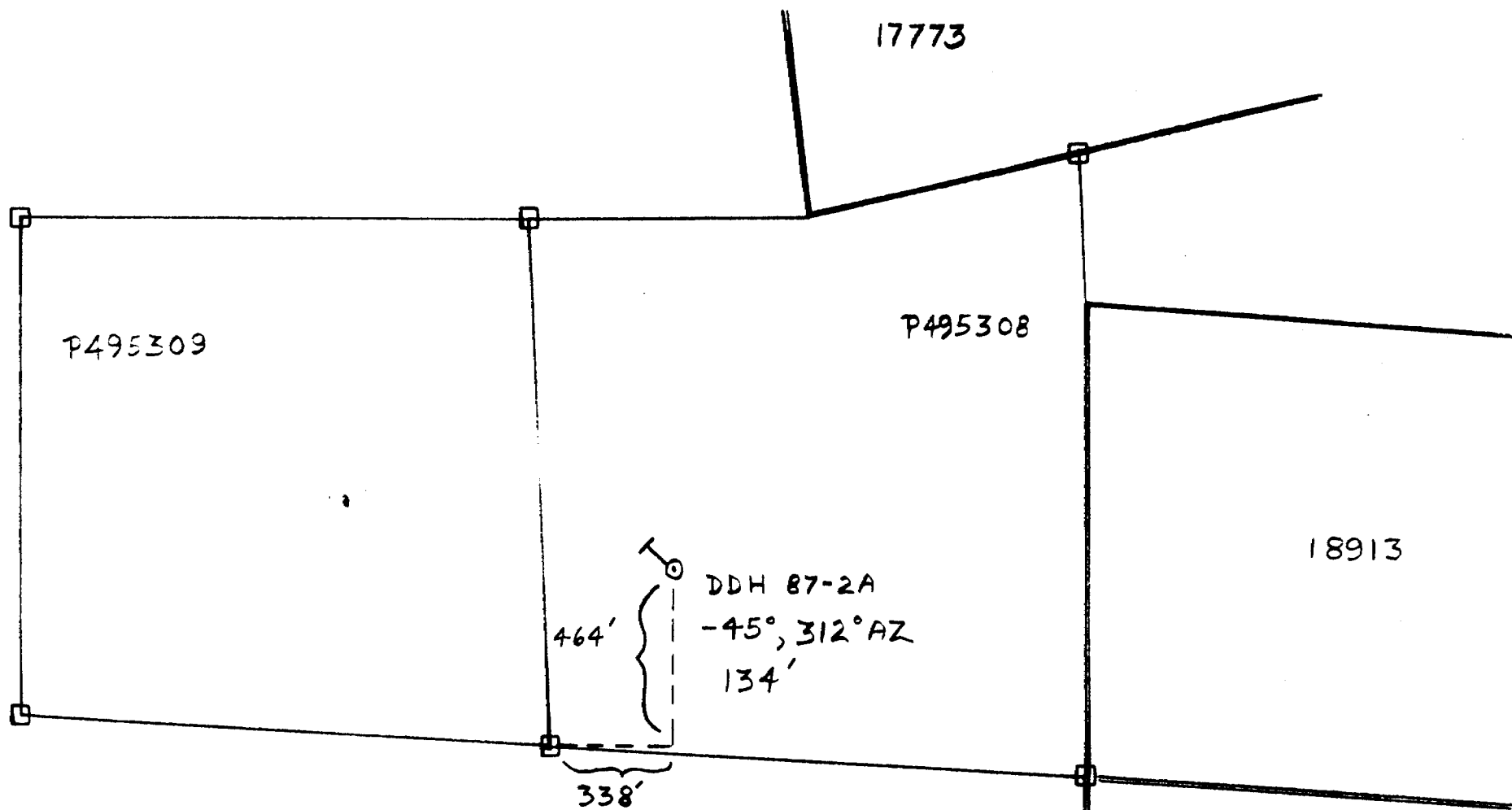
Robert
Bald

DIAMOND DRILL RECORD

NAME OF PROPERTY BRISTOL TOWNSHIP, HIGHWOOD
 HOLE NO. 87-1 SHEET NO. 7 of 7

FOOTAGE		DESCRIPTION	SAMPLE			ASSAYS					
FROM	TO		NO.	% SULPH. IDES	FOOTAGE			%	%	OZ/TON	OZ/TON
					FROM	TO	TOTAL				
9'	327'	MAFIC VOLCANIC/INTRUSIVE COMPLEX (CNT) To 310.8'; 315.3' to 316.0' (containing local weathered out, earthy pits) Very coarse-grained, magnetic section from 306.4' to 309.2'	13745		313.0'	316.0'	3.0'				
			13746		325.0'	327.0'	2.0'				
327'		END OF HOLE 9 FEET OF CASING LEFT IN HOLE									

Robert Bald



HIGHWOOD RESOURCES LTD.
LOCATION MAP
DIAMOND DRILL HOLE 87-2A

BRISTOL TOWNSHIP



1000 Feet
scale: 1:5,000

*Roberta
Bald*

DIAMOND DRILL RECORD

NAME OF PROPERTY BRISTOL TOWNSHIP HIGH WOOD
 HOLE NO. 87-2A LENGTH 134 FEET
 LOCATION CLAIM P495308
 LATITUDE 32+63N DEPARTURE 3+32E (metric grid)
 ELEVATION UNKNOWN AZIMUTH 312°AZ DIP -45°
 STARTED Nov. 18/87 FINISHED Nov. 24/87

FOOTAGE	DIP	AZIMUTH	FOOTAGE	DIP	AZIMUTH

HOLE NO. 87-2A SHEET NO. 1 of 2

REMARKS _____

LOGGED BY R. Bald

FOOTAGE		DESCRIPTION	SAMPLE			ASSAYS					
FROM	TO		NO.	% SULPHIDES	FOOTAGE		%	%	OZ/TON	OZ/TON	
					FROM	TO	TOTAL				
0'	~14'	OVERBURDEN (CASING TO 14 FEET)									
~14'	134'	MAFIC VOLCANIC / INTRUSIVE COMPLEX Alternating zones of: 1) Fine-grained mafic volcanic flow, dark greenish grey, massive, locally with amygdules filled with chlorite ± biotite ± magnetite ± pyrite (possibly these may be recrystallized pyroxene crystals?); magnetic; locally this unit contains medium- to coarse-grained clots of biotite and in some cases, may be intrusive(?). 2) Medium- to coarse-grained, more intrusive-looking mafic material, massive, magnetic, dark greenish grey, with interlocking, locally felted possibly amphibole, biotite and magnetite. 3) Cross-cutting dikes(?) of medium- to coarse-grained garnet-epidote-feldspar material; brown garnets.			22.0'	24.0'	2.0'				
					35.0'	37.5'	2.5'				
					51.0'	53.1'	2.1'				
					63.0'	65.5'	2.5'				

ONTARIO GEOLOGICAL SURVEY
 ASSESSMENT FILES
 OFFICE
 MAR 23 1988
 RECEIVED

Roberta Bald

DIAMOND DRILL RECORD

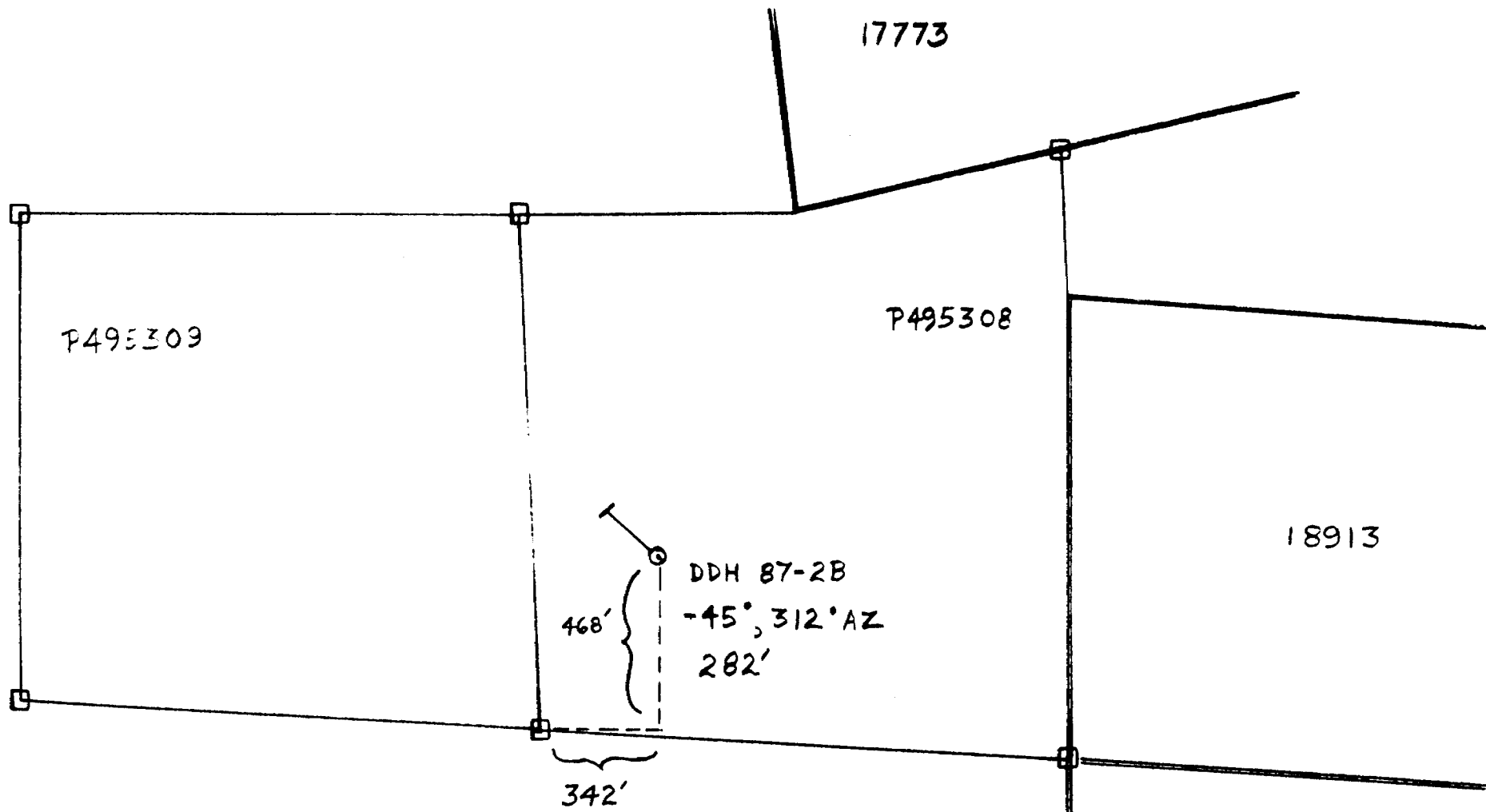
NAME OF PROPERTY BRISTOL TWP., HIGHWOOD

HOLE NO. 87-2A

SHEET NO. 2 of 2

FOOTAGE		DESCRIPTION	SAMPLE			ASSAYS					
FROM	TO		NO.	% SULPH IDES	FOOTAGE			%	%	OZ/TON	OZ/TON
					FROM	TO	TOTAL				
~14'	134'	<p>MAFIC VOLCANIC/INTRUSIVE COMPLEX (CONT)</p> <p>are up to 1/4" diameter, euhedral, locally zoned (andradite?), from 70' to 77' (but drillers mixed core up therefore ^{240ct} footage uncertain); non-magnetic; also ~3" at 116'</p> <p>Locally, unit is pink-red coloured, possibly k-spar alteration?; <1% pyrite, disseminated; pink quartz - feldspar vein at 102.5' at 20° to core axis <1" wide</p> <p>Less than 1% pyrite throughout unit</p> <p>Lost/ground core; 1' lost core between 106' and 116' tag; 2' lost core between 116' and 124' tags</p>									
					77.0'	80.0'	3.0'				
					90.0'	93.0'	3.0'				
					102.0'	103.0'	1.0'				
					116.0'	117.5'	1.5'				
					132.0'	134.0'	2.0'				
134'		<p>END OF HOLE, RODS STUCK</p> <p>14 FEET OF CASING LEFT IN HOLE</p>									

Robert
Gald



HIGHWOOD RESOURCES LTD.
LOCATION MAP
DIAMOND DRILL HOLE 87-2B

BRISTOL TOWNSHIP



1000 feet
scale: 1:5,000

*Roberta
Bald*

DIAMOND DRILL RECORD

NAME OF PROPERTY BRISTOL TOWNSHIP, HIGHWOOD RES.
 HOLE NO. 87-2B LENGTH 282 FEET
 LOCATION CLAIM P495308
 LATITUDE 32+63N DEPARTURE 3+34 E (metric grid)
 ELEVATION UNKNOWN AZIMUTH 312° AZ DIP -45°
 STARTED Nov. 25/87 FINISHED December 2/87

FOOTAGE	DIP	AZIMUTH	FOOTAGE	DIP	AZIMUTH
200'	-45.5°				

HOLE NO. 87-2B SHEET NO. 1 of 5

REMARKS _____

LOGGED BY R. Bald

FOOTAGE		DESCRIPTION	SAMPLE			ASSAYS				
FROM	TO		NO.	% SULPHIDES	FOOTAGE		%	%	OZ/TON	OZ/TON
					FROM	TO	TOTAL			
0'	5'	OVERBURDEN (CASING TO 10 FEET)								
5'	282'	<p>MAFIC VOLCANIC / INTRUSION COMPLEX</p> <p>Alternating sections of the following rock types:</p> <p>1) Medium-grained, massive to locally slightly foliated, equigranular mafic intrusive(?) consisting of fine- to medium-grained magnetite, epidote, biotite, amphibole and possibly garnet (brown, andradite) locally cut by quartz ± carbonate veinlets and pods, greenish grey to pink (possibly weathered?)</p> <p>2) Fine-grained, massive, magnetic, dark greenish grey, locally cut by pink to white carbonate (calcite) veinlets, randomly oriented, hard, containing ~1% ubiquitous, disseminated fine-grained pods of pyrite</p> <p>3) Coarse-grained, dark green with black specks, mafic intrusive(?) / altered flow(?) consisting of</p>								

ONTARIO GEOLOGICAL SURVEY
 ASSESSMENT FILES
 OFFICE
 MAR 23 1988
 RECEIVED

Robert Bald

DIAMOND DRILL RECORD

NAME OF PROPERTY BRISTOL TOWNSHIP, HIGHWOOD

HOLE NO. 87-2B

SHEET NO. 2 of 5

FOOTAGE		DESCRIPTION	SAMPLE			ASSAYS					
FROM	TO		NO.	% SULPHIDES	FOOTAGE			%	%	OZ/TON	OZ TON
					FROM	TO	TOTAL				
5'	282'	<p>MAFIC VOLCANIC/INTRUSIVE COMPLEX (CON'T)</p> <p>euhedral magnetite crystals and aggregates in a coarse-grained matrix of dark green amphibole(?) and biotite with ~1% fine- to medium-grained, disseminated, interstitial pyrite; magnetic; locally cut by carbonate veinlets.</p> <p>- Local earthy-weathered zones from top of hole to ~37'</p> <p>- Locally, core is very blocky</p> <p>- Local pink-salmon colour, possibly K-spar? alteration/veining with rare pyrite aggregates in between, fractures in vein system; from ~25' (broken core to ~27.3') to 29.0'; from 36.5' to 37.4'</p> <p>- Coarse-grained unit from ~38' to ~60'; local coarse-grained patches in fine-grained unit</p> <p>- Pink carbonate-quartz veinlet < 1/2" wide, at low angle to core (~20°) near 67'</p> <p>- Pink altered/quartz vein zone similar to 25' to 29'; from 77.6' to</p>									
			13747	27.3	29.0	1.7					
			13748	36.5	37.4	0.9					
			13749	47.0	50.0	3.0					
			13750	65.7	67.9	2.2					
			13751	77.6	78.7	1.1					

*Robert
Gald*

DIAMOND DRILL RECORD

NAME OF PROPERTY BRISTOL TOWNSHIP, HIGHWOOD
 HOLE NO. 87-2B SHEET NO. 3 of 5

FOOTAGE		DESCRIPTION	SAMPLE			ASSAYS					
FROM	TO		NO.	% SULPHIDES	FOOTAGE FROM TO TOTAL	%	%	OZ/TON	OZ/TON		
5'	282'	<p><u>VOLCANIC/</u></p> <p><u>MAFIC INTRUSIVE COMPLEX (CON'T)</u></p> <p>78.7' and 81.5' to 85.8' followed by a zone of coarse-grained brown garnets (locally euhedral, up to 1/4" diameter) from 85.8' to 97.9' with interstitial milky white to pink quartz and green epidote? gives unit a general khaki colour with local pink zones and locally cut by randomly oriented calcite, quartz or blue unknown mineral veinlets < 1/4" wide; similar pink-salmon veinlet zone from 102.3' to 106.0' almost parallel to core axis</p> <p>- Possible vesicles? at ~ 127' deep in areas up to ~ 1/8" long, containing pyrite (locally forming a partial rim) and possibly magnetite (black, hard mineral).</p> <p>- local dikelets < 1" wide of coarse-grained garnet-epidote-quartz material: at ~ 134' at 45° to core axis, locally possibly wider zone with smaller garnets from ~ 138' to ~ 140'; from 196.7' to 197.8' with abundant milky-white-pink quartz and about</p>	13752		81.5'	83.3'	1.8'				
			13753		102.3'	106.0'	3.7'				
			13754		116.0'	119.0'	3.0'				
			13755		130.0'	133.0'	3.0'				
			13756		143.0'	146.0'	3.0'				
			13757		158.0'	161.0'	3.0'				
			13758		171.0'	174.0'	3.0'				
			13759		184.0'	185.2'	1.2'				
			13760		196.7'	197.8'	1.1'				

Robert
Bald

DIAMOND DRILL RECORD

NAME OF PROPERTY BRISTOL TOWNSHIP, HIGHWOOD
 HOLE NO. 87-2B SHEET NO. 4 of 5

FOOTAGE		DESCRIPTION	SAMPLE			ASSAYS					
FROM	TO		NO.	% SULPHIDES	FOOTAGE			%	%	OZ/TON	OZ. TON
					FROM	TO	TOTAL				
5'	282'	<p>MAFIC VOLCANIC/INTRUSIVE COMPLEX (CONT)</p> <p>3% fine- to medium-grained disseminated pyrite crystals and blebs in medium- to coarse-grained, dark green host rock, from 197.8' to ~199.2'; from 203.9' to ~212.5' including a very coarse-grained section from 203.9' to 208.9' (dark brown garnets are up to 1/4" diameter) and a pyrite-rich zone <1/2" at 206.2' (~20% medium- to coarse-grained pyrite crystals), and a foliated section from 208.9' to 209.7' at 30° to core axis; from 215.5' to 217.2' with a fault contact running parallel to core axis to 218.0'</p> <p>- Unit is deformed/folded and blocky from ~212.0' to 214.0'</p> <p>- possible vesicles at ~203.5'</p> <p>- Quartz-carbonate zone, pink, from 219.0' to 219.5' ~3" true width, at 30° to core axis, no sulphides seen, similar zone at 236', <1" wide</p> <p>- Medium- to coarse-grained garnet rich section from 258.8' to 259.2', in sharply defined zone, garnets</p>									
			13761		205.5'	207.0'	1.5'				
			13762		219.0'	219.5'	0.5'				
			13763		235.5'	236.5'	1.0'				
			13764		248.5'	250.0'	1.5'				

Robert
Bald

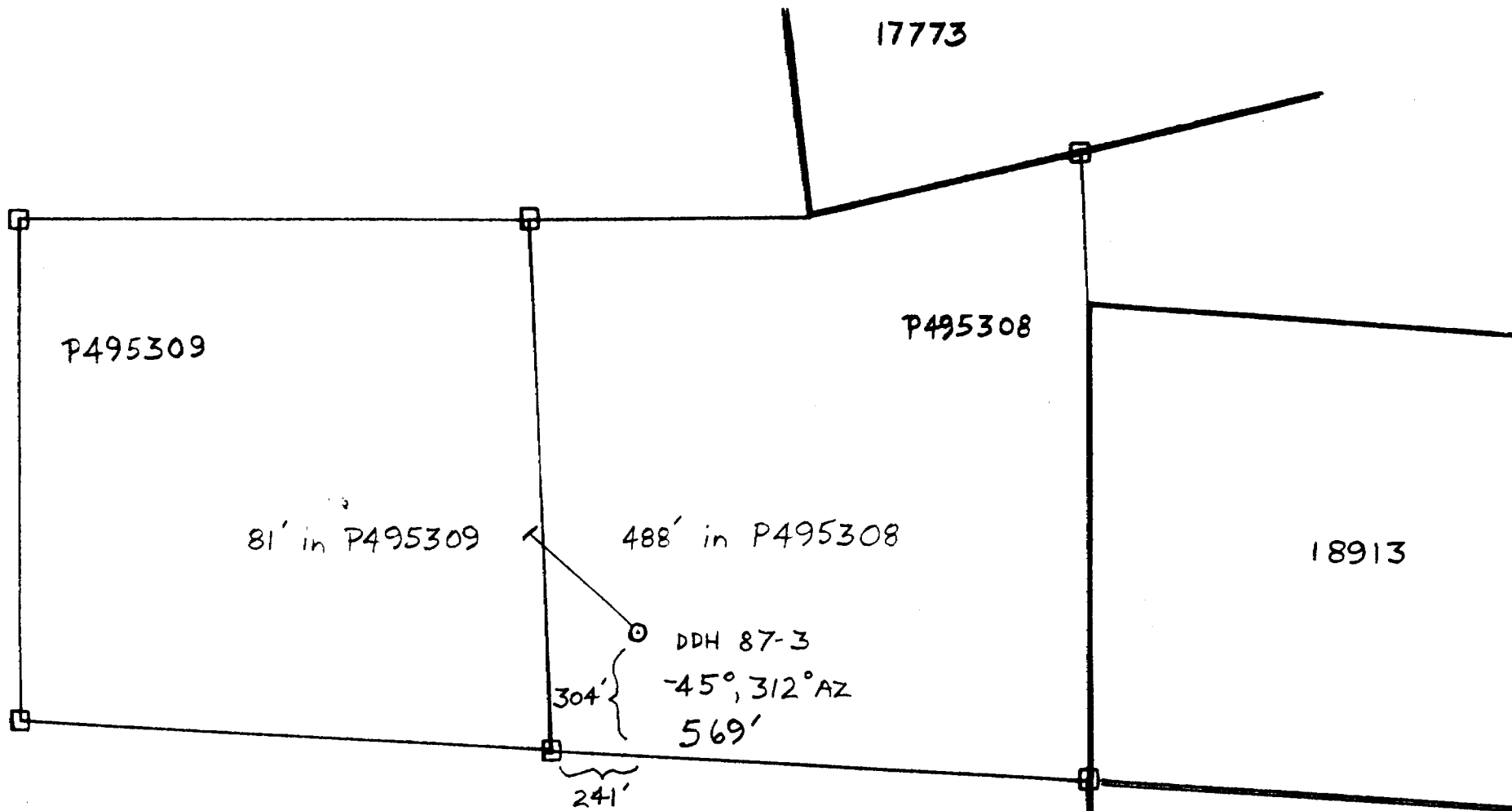
DIAMOND DRILL RECORD

NAME OF PROPERTY BRISTOL TOWNSHIP, HIGHWOOD

HOLE NO. 87-2B SHEET NO. 5 of 5

FOOTAGE		DESCRIPTION	SAMPLE				ASSAYS				
FROM	TO		NO.	% SULPH IDES	FOOTAGE			%	%	OZ. TON	OZ. TON
					FROM	TO	TOTAL				
5'	282'	MAFIC VOLCANIC/INTRUSIVE COMPLEX (CONT) appear to occur in bands (roughly); sharp contacts at 40° to core axis.	13765		260.0'	263.0'	3.0'				
			13766		273.0'	275.0'	2.0'				
282.1'		END OF HOLE 10 FEET OF CASING LEFT IN HOLE									

*Robert
Bald*



HIGHWOOD RESOURCES LTD.
 LOCATION MAP
 DIAMOND DRILL HOLE 87-3

BRISTOL TOWNSHIP



0 ————— 1000 feet
 scale: 1:5,000

*Roberta
 Bald*

DIAMOND DRILL RECORD

NAME OF PROPERTY BRISTOL TOWNSHIP, HIGHWOOD
 HOLE NO. 87-3 LENGTH 569.0 FEET
 LOCATION CLAIM P495308
 LATITUDE 32+06N DEPARTURE 3+35E (metric grid)
 ELEVATION UNKNOWN AZIMUTH 312°AZ DIP -45°
 STARTED Dec. 3/87 FINISHED Dec. 11/87

FOOTAGE	DIP	AZIMUTH	FOOTAGE	DIP	AZIMUTH
220'	-41°				
400'	-42.5°				
560'	-40.5°				

HOLE NO. 87-3 SHEET NO. 1 of 9

REMARKS _____

LOGGED BY R. Bald

FOOTAGE		DESCRIPTION	SAMPLE			ASSAYS					
FROM	TO		NO.	% SULPHIDES	FOOTAGE		%	%	oz/ton	oz/ton	
					FROM	TO	TOTAL				
0'	13.5'	OVERBURDEN (CASING TO 14 FEET)									
13.5'	359.5'	MAFIC VOLCANIC/INTRUSIVE COMPLEX Similar to hole 87-2B (see log for description) Lost/ground core; 7.5' ground core between 14' and 24' tags; 4' ground core between 30' and 39' tags; 4.5' ground core between 39' and 44' tags; 2.5' ground core between 49' and 57' tags; very blocky core from 13.5' to ~96'. Coarse-grained garnet-epidote-quartz zone from 50' to ~51.6'; upper contact sharp at ~40° to core axis, lower contact gradational? Pink-salmon coloured coarse- to medium-grained zone (possible K-spar alteration?) from ~56.0' to 58.4' (some core possibly ground); <1% fine-grained patchy pyrite, upper contact ground, lower contact at 15°-20° to core axis;			56.0'	58.4'	2.4'				

ONTARIO GEOLOGICAL SURVEY
 ASSESSMENT FILES OFFICE
 MAR 25 2002
 RECEIVED

Robert Bald

DIAMOND DRILL RECORD

NAME OF PROPERTY BRISTOL TOWNSHIP, HIGHWOOD
 HOLE NO. 87-3 SHEET NO. 2 of 9

FOOTAGE		DESCRIPTION	SAMPLE			ASSAYS					
FROM	TO		NO.	% SULPHIDES	FOOTAGE			%	%	OZ./TON	OZ./TON
					FROM	TO	TOTAL				
13.5'	359.5'	<p>MAFIC VOLCANIC/INTRUSIVE COMPLEX (CON'T)</p> <p>also from ~75' to 76.3' with ~2% disseminated, fine- to medium-grained pyrite; contacts sharp at 30° to core axis; pyrite (up to ~1%) in host rock on either side of pink zone for ~1'-2', silicified somewhat; from 77.2' to ~80.5', contacts irregular; from ~86' to 87.3'</p> <p>Possible feldspar porphyry dike from 87.9' to 88.3', ~1% fine-grained disseminated pyrite, milky white plagioclase laths up to 1/10" long, randomly oriented, ~5%; irregular contacts, sharp.</p> <p>Locally wuggy calcite veins <1" wide at low angle to core axis</p> <p>Ground core, 2' from 76' to 86' tags</p> <p>Coarse-grained section from ~97.3' to ~165'; becoming increasingly coarse-grained with focal zones containing medium- to coarse-grained garnets and/or green amphibole blades; massive, locally very magnetic to locally non-magnetic, generally moderately magnetic; very coarse-</p>									
			ground core	72.0'	75.0'	1.6'					
				75.0'	76.3'	1.3'					
				76.3'	79.2'	2.9'					
				79.2'	80.5'	1.3'					
				86.0'	87.3'	1.3'					
				97.3'	98.3'	0.8'					
				108.2'	111.2'	3.0'					

Robert
Bald

DIAMOND DRILL RECORD

NAME OF PROPERTY BRISTOL TOWNSHIP, HIGHWOOD
 HOLE NO. 87-3 SHEET NO. 3 of 9

FOOTAGE		DESCRIPTION	SAMPLE			ASSAYS					
FROM	TO		NO.	% SULPHIDES	FOOTAGE			%	%	OZ./TON	OZ. TON
					FROM	TO	TOTAL				
13.5'	~359.5'	<p>MAFIC VOLCANIC/INTRUSIVE COMPLEX (CONT)</p> <p>grained from ~131' to ~148'</p> <p>Quartz vein at ~118.5' ~1" true width, at 60° to core axis; with epidote and a few rusty minerals (pyrite?)</p> <p>Medium- to coarse-grained pink milky white quartz-feldspar-epidote vein at 178.0'; upper contact ground, lower contact sharp at 30° to core axis; also at 182.5', similar to the one at 178.0'.</p> <p>Unit contains abundant biotite in patches from ~207' to 211.5'</p> <p>Coarse-grained sections similar to 97.3' to ~165' from ~212' to 254.7'; with a possible quartz-feldspar dike? or alteration (perphyry?) from 223.5' to 225.4', irregular contacts and some pods/lenses, possibly at very low angle to core axis; milky white to brownish-grey feldspar euhedral crystals up to 1/2" long, lath shaped, locally appear zoned; pinkish to white unit, with green epidote and black biotite</p>									
					118.0'	119.0'	1.0'				
					129.0'	130.5'	1.5'				
					140.0'	142.0'	2.0'				
					152.0'	154.0'	2.0'				
					164.0'	165.6'	1.6'				
					178.0'	180.0'	2.0'				
					190.0'	191.5'	1.5'				
					202.0'	204.0'	2.0'				
					214.0'	216.0'	2.0'				

Robert
Bald

DIAMOND DRILL RECORD

NAME OF PROPERTY BRISTOL TOWNSHIP, HIGHWOOD
 HOLE NO. 87-3 SHEET NO. 4 of 9

FOOTAGE		DESCRIPTION	SAMPLE			ASSAYS						
FROM	TO		NO.	% SULPHIDES	FOOTAGE FROM TO TOTAL	%	%	OZ/TON	OZ/TON			
13.5'	359.5'	<p>MAFIC VOLCANIC/INTRUSIVE COMPLEX (CON'T)</p> <p>Medium-grained garnet(?) - rich zone similar to 50' to 51.6', dark mottled brown with interstitial green (epidote) from 226.2' to ~229.4' (broken core), contacts ground; also definite coarse-grained garnet-epidote - feldspar - quartz dike at 239', at 15° to core axis, true width ~1".</p> <p>Local fine-grained, deformed zones within coarse-grained unit: from 251.2' to 252.4'; locally almost parallel to core axis.</p> <p>From 261' to 272'; core is mixed up</p> <p>Coarse-grained garnet-rich zone from 274.6' to 277.1'; 279.8' to 280.4'; 288.7' to 294.1'</p> <p>Coarse-grained from ~277.5' to 279.8', coarse-grained biotite</p> <p>At 281', possible curvilinear pillow margins(?) with steel blue, soft material in interstices (possible chlorite or serpentine minerals?)</p> <p>Pink altered zones from 303.3' to 304.8' with pyrite blebs <1%; also</p>										
					227.6'	229.0'	1.4'					
					238.2'	239.7'	1.5'					
					251.0'	253.0'	2.0'					
					272.0'	274.0'	2.0'					
					284.0'	286.0'	2.0'					
					296.0'	298.0'	2.0'					
					303.3'	305.7'	2.4'					

Roberta
Bald

DIAMOND DRILL RECORD

NAME OF PROPERTY BRISTOL TOWNSHIP, HIGH WOOD
 HOLE NO. 87-3 SHEET NO. 5 of 9

FOOTAGE		DESCRIPTION	SAMPLE			ASSAYS				
FROM	TO		NO.	% SULPHIDES	FOOTAGE		%	%	OZ/TON	OZ/TON
				FROM	TO	TOTAL				
13.5'	359.5'	<p>MAFIC VOLCANIC/INTRUSIVE COMPLEX (CONT)</p> <p>from 305.0' to 305.7', locally foliated parallel to sharp contacts at 25° to core axis, mafic host rock, foliated near contacts; 311.3' to 311.8'; 1" wide at 312'; 312.2' to 312.4'; contacts vary from 25° to 60° to core axis.</p> <p>In situ brecciation near 314' with green epidote filling fractures</p> <p>Core appears inhomogeneous in colour, texture and structure from ~290' on; greater percentage of fine-grained, massive material (possible mafic volcanic flow?) from ~326.3' on; possible small, <1/10", vesicles at 326.9'</p> <p>~2" wide zone of possible feldspar porphyry dike? near ~337.5'</p> <p>Lower contact gradational with interfingering of both units</p>								
				313.5'	314.5'	1.0'				
				325.0'	326.8'	1.8'				
				337.0'	338.0'	1.0'				
				348.0'	349.0'	1.0'				
359.5'	569.0'	<p>MAFIC PILLOWED AMYGDALOIDAL FLOW</p> <p>Fine-grained, dark grey to dark greenish grey, magnetic mafic flow with local amygdules (ellipsoidal areas up to 1/3" long but generally ~1/10"</p>								

Roberta Bald

LANGRIDGES TORONTO - 366-1168

DIAMOND DRILL RECORD

NAME OF PROPERTY BRISTOL TOWNSHIP, HIGHWOOD
 HOLE NO. 87-3 SHEET NO. 6 of 9

FOOTAGE		DESCRIPTION	SAMPLE			ASSAYS			
FROM	TO		NO.	% SULPHIDES	FOOTAGE FROM TO TOTAL	%	%	OZ./TON	OZ./TON
359.5'	569.0'	<p>MAFIC PILLOWED AMYGDALOIDAL FLOW (CONT)</p> <p>long filled with pyrite ± epidote ± K-spar? ± magnetite?, commonly zoned; also local curvilinear zones, possibly pillow margins, generally less than 1/2" wide, locally banded with epidote ± magnetite ± pale pink K-spar(?); pillow margins are generally somewhat darker than rest of flow which is locally slightly bleached to medium grey colour.</p> <p>From 367.5' to 368.9': pink-salmon alteration? vein similar to 56.0' to 58.4' with patches of up to 2% fine to medium-grained disseminated pyrite; pink veinlets and pyrite disseminations in dark grey host rock from 368.9' to 369.9'</p> <p>Local zones of coarse-grained material throughout unit, similar to 97.3' to ~165'</p> <p>~1" wide veinlet of brown medium to coarse-grained garnet-rich material at 413.3', at 60° to core axis; + epidote + quartz; also a garnet-rich zone from 418.2' to 421.8', garnets up to ~1/10" diameter, euhedral; becoming</p>							
					365.0'	367.5'	2.5'		
					367.5'	368.9'	1.4'		
					368.9'	369.9'	1.0'		
					380.0'	382.0'	2.0'		
					392.0'	394.0'	2.0'		
					404.0'	405.7'	1.7'		

Roberta Bald

LANGRIDGES - TORONTO - 386-1168

DIAMOND DRILL RECORD

NAME OF PROPERTY BRISTOL TOWNSHIP, HIGHWOOD
 HOLE NO. 87-3 SHEET NO. 779

FOOTAGE		DESCRIPTION	SAMPLE			ASSAYS					
FROM	TO		NO.	% SULPHIDES	FOOTAGE			%	%	OZ/TON	OZ/TON
					FROM	TO	TOTAL				
~359.5'	569.0'	<p>MAFIC PILLOWED AMYGDALOIDAL FLOW (CON'D) more pegmatitic looking towards 421.8', until core consists of ~90% pinkish white feldspar (possible feldspar porphyry?) medium- to coarse-grained with disseminated magnetite crystals and threadlike dark green chlorite veinlets throughout; Feldspar porphyry(?) from 421.8' to ~423.5' (upper and lower contact irregular and interfingered); then from 423.5' to 427.7' is a possible mafic flow(?) with about 10-15% fine- to medium-grained (up to 1/4" long), randomly oriented white to pale pink feldspar laths, and ~5% quartz + calcite randomly oriented veinlets (< 1/4" wide), also local fine- to coarse-grained pyrite dustings associated with some veinlets; lower contact is gradational and grades back into "normal" looking mafic amygdaloidal flow.</p> <p>Unit gradually is becoming silicified from ~427' on; also amount of pyrite is increasing.</p> <p>Foliated section from 435.0' to</p>									
					419.8'	421.8'	2.0'				
					421.8'	423.5'	1.7'				
					423.5'	427.7'	4.2'				

Robert
Bald

DIAMOND DRILL RECORD

NAME OF PROPERTY BRISTOL TOWNSHIP, HIGHWOOD
 HOLE NO. 87-3 SHEET NO. 8 of 9

FOOTAGE		DESCRIPTION	SAMPLE			ASSAYS					
FROM	TO		NO.	% SULPHIDES	FOOTAGE		%	%	OZ./TON	OZ./TON	
					FROM	TO	TOTAL				
359.5'	569.0'	MAFIC PILLOWED AMYGDALOIDAL FLOW (CON'T) 435.6' at 35° to core axis About 5% threadlike calcite veinlets at 40°-60° to core axis from ~440.3' to 443.4' Local salmon-coloured quartz(?) ± feldspar veinlets Possible amygdalites near 477' From ~478' to 514.5': intensely silicified, deformed zone with locally up to ~20% milky white quartz veinlets < 1/2" wide but generally ~5-10% overall; generally low core angles in order of 10° to 20° (quartz veins and foliated sections); local pink-salmon colour in veinlets and patches (possible K-spar? alteration?); up to 10% Fine-grained to coarse-grained disseminated pyrite, especially common in pink-salmon zones; host rock is probably an altered mafic volcanic flow, fine-grained, dark grey with local possible feldspar porphyry dikes (from 473.8' to 474.1'; 490.4' to 491.6'; this one is similar to 421.8' to 423.5' except no black minerals); local faulting and folding,									
					440.3	443.4	3.1'				
			77001		466.2	469.6	3.4'				
			77002		469.6	472.9	3.3'				
			77003		472.9	476.2	3.3'				
			77004		476.2	479.4	3.2'				
			77005		479.4	481.1	1.7'				
			77006		481.1	482.4	1.3'				
			77007		482.4	486.0	3.6'				
			77008		486.0	489.3	3.3'				
			77009		489.3	492.6	3.3'				
			77010		492.6	495.8	3.2'				
			77011		495.8	499.1	3.3'				
			77012		499.1	502.4	3.3'				
			77013		502.4	505.7	3.3'				
			77014		505.7	509.7	4.0'				
			77015		509.7	512.2	2.5'				
			77016		512.2	515.5	3.3'				
			77017		515.5	518.2	2.7'				
			77018		518.2	523.0	4.8'				
			77019		523.0	525.4	2.4'				
			77020		525.4	526.8	1.4'				

Robert
Bald

DIAMOND DRILL RECORD

NAME OF PROPERTY BRISTOL TOWNSHIP, HIGHWOOD

HOLE NO. 87-3

SHEET NO. 9 of 9

FOOTAGE		DESCRIPTION	SAMPLE			ASSAYS					
FROM	TO		NO.	% SULPHIDES	FOOTAGE			%	%	OZ./TON	OZ./TON
				FROM	TO	TOTAL					
~354.5'	569.0'	MAFIC PILLOWED AMYGDALOIDAL FLOW (CONT)									
		some brecciated zones; local later	77021	526.8'	529.8'	3.0'					
		milky white quartz veins, general	77022	529.8'	535.2'	5.4'					
		ly from ~50° to 90° to core axis, cross	77023	535.2'	541.1'	5.8'					
		cutting foliation; fine-grained,	77024	541.1'	545.1'	4.0'					
		dissiminated magnetite, core	77025	545.1'	548.3'	3.2'					
		is very magnetic; unit becoming	77026	548.3'	551.6'	3.3'					
		less silicified from ~510' to 514.5';	77027	551.6'	554.9'	3.3'					
		similar zone from 523.0' to	77028	554.9'	558.5'	3.6'					
		531.3'; and 540.5' to 557.3' with a									
		green colour, possibly feldspar									
		porphyry like from 540.5' to 541.0'									
		Abundant amygdulites from									
		~559.5' to 562.5'									
		Possible feldspar porphyry like?									
		from 563.0' to 565.0', pinkish to greenish									
		with <1% possible brown garnets;									
		contacts sharp at 30° to core axis.									
		END OF HOLE									
		14 FEET OF CASING LEFT IN HOLE									

Roberta
Bald

569.0'



#351/87

#351/87

Minir



42A05NE8428 34 BRISTOL

900

Name and Postal Address of Recorded Holder

J.P. Croxall

K-18327

376 Cherry St Timmins Ont.

Bristol

Summary of Work Performance and Distribution of Credits

Total Work Days Cr. claimed	Mining Claim		Work Days Cr.	Mining Claim		Work Days Cr.	Mining Claim		Work Days Cr.
	Prefix	Number		Prefix	Number		Prefix	Number	
1312	P	757659	40						
for Performance of the following work. (Check one only) <ul style="list-style-type: none"> <input type="checkbox"/> Manual Work <input type="checkbox"/> Shaft Sinking Drifting or other Lateral Work. <input type="checkbox"/> Compressed Air, other Power driven or mechanical equip. <input type="checkbox"/> Power Stripping <input checked="" type="checkbox"/> Diamond or other Core drilling <input type="checkbox"/> Land Survey 									

All the work was performed on Mining Claim(s): P 495308

Required Information eg: type of equipment, Names, Addresses, etc. (See Table Below)

Diamond Drilling Bristol
 Belanger Diamond Drilling
 603 Notre Dame St.
 Azilda, Ont.
 P O M I B O
 (AXT core) greater than 7"
 Total 1312 feet
 Remainder of days in reserve

ONTARIO GEOLOGICAL SURVEY
 ASSESSMENT FILES OFFICE
 MAR 23 1988
 RECEIVED
RECORDED
 DEC 31 1987

Date of Report: Dec 31/87
 Recorded Holder or Agent (Signature): *Berry Handbook*

Certification Verifying Report of Work

I hereby certify that I have a personal and intimate knowledge of the facts set forth in the Report of Work annexed hereto, having performed the work or witnessed same during and/or after its completion and the annexed report is true.

Name and Postal Address of Person Certifying

1349 Chevrier Ave, Timmins Ont

Date Certified

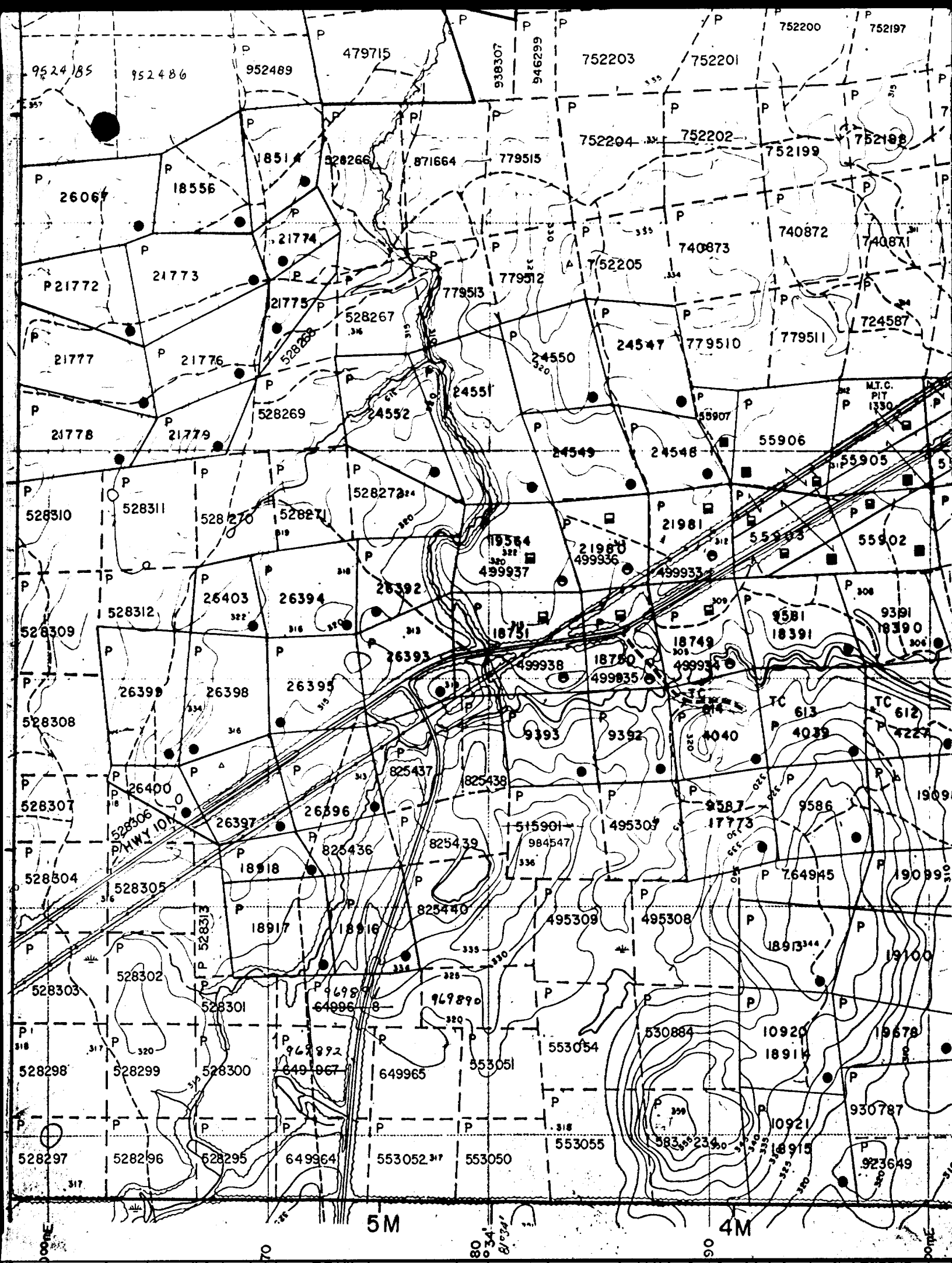
Dec 31/87

Certified by (Signature)

Berry Handbook

Table of Information/Attachments Required by the Mining Recorder

Type of Work	Specific information per type	Other information (Common to 2 or more types)	Attachments
Manual Work	Nil	Names and addresses of men who performed manual work/operated equipment, together with dates and hours of employment.	Work Sketch: these are required to show the location and extent of work in relation to the nearest claim post.
Shaft Sinking, Drifting or other Lateral Work	Nil		
Compressed air, other power driven or mechanical equip.	Type of equipment	Names and addresses of owner or operator together with dates when drilling/stripping done.	Work Sketch (as above) in duplicate
Power Stripping	Type of equipment and amount expended. Note: Proof of actual cost must be submitted within 30 days of recording.		
Diamond or other core drilling	Signed core log showing: footage, diameter of core, number and angles of holes.		
Land Survey	Name and address of Ontario land surveyor.	Nil	Nil



Bristol Twp.

Denton Twp.

