



42A05NE8432 35 BRISTOL

010

DIAMOND DRILLING

TOWNSHIP: BRISTOL

REPORT NO: 35

WORK PERFORMED FOR: R.E. Allerston

RECORDED HOLDER: Same as Above [xx]
: Other []

<u>Claim No.</u>	<u>Hole No.</u>	<u>Footage</u>	<u>Date</u>	<u>Note</u>
P 996006	HG-1	385'	Dec/87	(1)
P 996007	HG-2	390'	Jan/88	(1)
	HG-3	310'	Dec/87	(1)
	HG-4	400'	Dec/87	(1)
P 996008	HG-5	400'	Jan/88	(1)
P 996006	HG-6	270'	Jan/88	(1)
	HG-7	380'	Jan/88	(1)
P 996011	HG-8	394'	Jan/88	(1)

394'

Notes: (1) #W8806.096, filed in Oct/88

DIAMOND DRILL RECORD

PROPERTY BRISTOL TWP

HOLE No. HG-1

DIP TEST		
Footage	Angle	
	Reading	Corrected

Hole No. H.G.-1 Sheet No. 1
 Section LINE 30+00E 4+00 S
 Date Begun Dec 7/87
 Date Finished Dec 17/87
 Date Logged Dec 18/87

Lat. _____
 Dep. _____
 Bearing 0°
 Elev. Correr. DIP -45°

Total Depth 385'
 Logged By M. HLAVA
 Claim P 996006
 Core Size B.Q

DEPTH		RECOVERY	DESCRIPTION	SAMPLE No.	FROM	TO	WIDTH OF SAMPLE				
FROM	TO										
0'	48'	—	OBD								
48.0'	314.7'	98-100%	RHYOLITE. LIGHT GREY. FINE GRAINED. MINOR QTZ VEINING.								
314.7'	332.0'	100%	MAFIC INTRUSIVE. MEDIUM GRAINED, BLACK. CONTACTS CHILLED								
332.0'	385.0'	100%	RHYOLITE. LIGHT GREY. FINE GRAINED. MINOR PY.								
385.0'			END OF HOLE.								

William Ward

ONTARIO GEOLOGICAL SURVEY
 ASSESSMENT FILES
 OFFICE
 MAY 20 1988
 RECEIVED

DIAMOND DRILL RECORD

PROPERTY Bristol Twp

HOLE No. HG-2

DIP TEST		
Footage	Angle	
	Reading	Corrected

Hole No. HG-2 Sheet No. 1
 Section LINE 27+00E 3+50S
 Date Begun JAN 10/88
 Date Finished JAN 11/88
 Date Logged JAN 13/88

Lat. _____
 Dep. _____
 Bearing 180°
 Elev. Contar. DIP -50°

Total Depth 390'
 Logged By M. Heava
 Claim P996007
 Core Size B. Q

DEPTH FROM	TO	RECOVERY	DESCRIPTION	SAMPLE No.	FROM	TO	WIDTH OF SAMPLE				
0	44	—	Ø3D								
44.0	120.5	100%	FELDSPAR PORPHYRY, GREY-CREAMY; .40% FELDSPAR PHENOCRYST 1/8" IN DIAMETER								
120.5	254.2	100%	FELDSPAR PORPHYRY, YELLOWISH GREY, MODERATELY KAOLINIZED.								
254.2	260.0	100%	FELDSPAR PORPHYRY; GREY, HIGHLY SILICIFIED QTZ STOCKWORK WITH 10% FINE GRAINED PY.	101135	254.2	260.0					
260.0	270.0	100%	QTZ-CARBONATE ZONE WITH 15% FINE GRAINED PY IN FORM OF IRREGULAR BLENDS, VEINLETS.	101136	260.0	270.0					
270.0	278.0	100%	FELDSPAR PORPHYRY, LIGHT GREY, 5% DISS PY								
278.0	288.0	100%	QTZ-CARBONATE ZONE WITH 15% OF FINE GRAINED PY AND MINOR PO.	101137	278.0	288.0					
288.0	298.0	100%	FELDSPAR PORPHYRY; GREY, MINOR QTZ VEINLETS								
298.0	308.0	100%	FELDSPAR PORPHYRY; BEIGE; HIGHLY SILICIFIED WITH 15% PY. MINOR PO.								
308.0	390	100%	DIABASE; GREY-BLACK MEDIUM GRAINED.								

Milaw Allan

DIAMOND DRILL RECORD

PROPERTY Bristol Twp

HOLE No. HG-3

DIP TEST		
Footage	Angle	
	Reading	Corrected

Hole No. HG-3 Sheet No. 1
 Section L 24+00E 7+50S
 Date Begun Dec 17/87
 Date Finished Dec 19/87
 Date Logged JAN 13/88

Lat. _____
 Dep. _____
 Bearing 180°
 Elev. Correr. -45°

Total Depth 310'
 Logged By M. HLAVA
 Claim P 996007
 Core Size B. Q.

DEPTH		RECOVERY	DESCRIPTION	SAMPLE No.	FROM	TO	WIDTH OF SAMPLE															
FROM	TO																					
0	161.8	100%	RHYOLITE. LIGHT GREY. BRECCIA. FRAGMENTS UP TO 3" IN DIAMETER. MINOR DISSPY (<1%)																			
161.8	275.0	100%	FELDSPAR PORPHYRY. LIGHT GREY. PHENOCRISTS UP TO 5mm IN DIAMETER. UPPER CONTACT AT 309 T.C.A ; LOWER CONTACT AT 15° T.C.A.																			
275.0	310.0	100%	DIABASE. GREY - BLAEN MEDIUM GRAINED																			
			<i>Miloslav Hlava</i>																			

DIAMOND DRILL RECORD

PROPERTY BRISTOL TWP

HOLE No. HG-4

DIP TEST		
Footage	Angle	
	Reading	Corrected

Hole No. HG-4 Sheet No. 1
 Section LINE 2100E 5700S
 Date Begun Dec 19/87
 Date Finished Dec 22/87
 Date Logged JAN 14/88

Lat. _____
 Dep. _____
 Bearing 0°
 Elev. Correr. DIP - 45°

Total Depth 400'
 Logged By M. HLAVA
 Claim P 996007
 Core Size B. G.

DEPTH FROM	TO	RECOVERY	DESCRIPTION	SAMPLE No.	FROM	TO	WIDTH OF SAMPLE						
0	7	—	ØBD										
7.0	75.0'	100%	RHYOLITE, LIGHT GREENISH GREY, APHANITIC. HIGHLY SILICIFIED, SLIGHTLY MAONIZED. CUT BY MANY IRREGULAR QTZ VEINS WITH MINOR CARBONATE. NO VISIBLE MINERALIZATION	10131	40.0	42.0							
				10132	65.8'	68.5'							
75.0	164.0	100%	RHYOLITE, LIGHT GREY - LIGHT YELLOWISH GREY AMYGDALOIDAL, HIGHLY CARBONATIZED. FLOW LINEATION AT 30° T.C.A. MINOR FINELY DISS. PY (< 1%)	10133	183.0	185.5'							
164.0	173.3'	100%	RHYOLITE SAME AS ABOVE, ONLY SLIGHTLY ALTERED										
173.3'	256.0	100%	RHYOLITE, LIGHT GREY - CREAMY, APHANITIC HIGHLY SILICIFIED. QTZ VEIN 201.0' - 201.5' 50° UP TO 5% DISS PY MINOR PD FROM 183.0 - 185.5'										
256.0	319.0	100%	RHYOLITE. THE SAME AS ABOVE BUT DARKER GREY.										
319.0	351.6'	100%	DIABASE. BLACK, MEDIUM GRAINED, CHILLED CONTACTS AT 20° T.C.A.										
351.6	366.3'	100%	ANDESITE. DARK GREY, PORPHYRYTIC										
366.3'	400.0	100%	RHYOLITE. BX. LIGHT GREY - CREAMY. HIGHLY SILICIFIED MINOR (< 1%) DISS PY										

Michael Alford

DIAMOND DRILL RECORD

PROPERTY BRISTOL TWP

HOLE No. HG-5

DIP TEST		
Footage	Angle	
	Reading	Corrected

Hole No. H.G.-5 Sheet No. 1
 Section LINE 15+00E 7+00S
 Date Begun JAN 5/88
 Date Finished JAN 7/88
 Date Logged JAN 16/88

Lat. _____
 Dep. _____
 Bearing 180°
 Elev. Cor. ^{Dip} -45°

Total Depth 400'
 Logged By M. HLAVA
 Claim P996008
 Core Size B.Q.

DEPTH		RECOVERY	DESCRIPTION	SAMPLE No.	FROM	TO	WIDTH OF SAMPLE				
FROM	TO										
0	11'	-	OBD								
11'	400'	100%	RHYOLITE LIGHT GREY, APHANITIC. MINOR QTZ VEINLETS. NO VISIBLE ALTERATION OR MINERALIZATION								
			<i>Milan Mlana</i>								

DIAMOND DRILL RECORD

PROPERTY BRISTOL TWP

HOLE No. HG-6

DIP TEST		
		Angle
Footage	Reading	Corrected

Hole No. HG-6 Sheet No. 1
 Section LINE 36+00E 3+00S
 Date Begun JAN 18/88
 Date Finished JAN 9/88
 Date Logged JAN 17/88

Lat. _____
 Dep. _____
 Bearing 180°
 Elev. Gellar. DIP - 45°

Total Depth 270
 Logged By M. HLAVA
 Claim P 996006
 Core Size B.Q

DEPTH		RECOVERY	DESCRIPTION	SAMPLE No.	FROM	TO	WIDTH OF SAMPLE							
FROM	TO													
0'	85.0'	—	OSD											
85.0'	136.0'	95%	MAFIC TUFF - BEIGE-LIGHT GREY THINLY LAMINATED WITH OCC. FELSIC FRAGMENTS UP TO 1/2" IN DIAMETER. LAMINATION AT 30° TCA. ALTERATION: MODERATELY CARBONATIZED; HIGHLY FRACTURED											
136.0'	170.0'	98%	GRAPHITIC SCHIST. DARK GREY-BLACK SCHISTOSITY AT 35° TCA											
170.0'	256.0'	98%	MAFIC TUFF, LIGHT GREEN - LIGHT GREY THINLY LAMINATED WITH MINOR FELSIC FRAGMENTS UP TO 2" IN DIAMETER. LAMINATION AT 35° TCA. ALTERATION: HIGHLY CHLORITIZED.											
256.0'	270.0'	100%	RHYOLITE, BEIGE, VERY FINE GRAINED WITH MINOR CARBONATE VEINLETS.											
	270.0'		END NOTE: AT 270' LOST CIRCULATION; CAVING DUE TO FAULT ZONE; HOLE STOPPED											
			<i>Milan Alava</i>											

DIAMOND DRILL RECORD

PROPERTY BRISTOL TWP

HOLE No. HG-7

DIP TEST		
Footage	Angle	
	Reading	Corrected

Hole No. HG-7 Sheet No. 1
 Section L 30+00E 11+00S
 Date Begun JAN 12/88
 Date Finished JAN 14/88
 Date Logged JAN 18/88

Lat. _____
 Dep. _____
 Bearing 180°
 Elev. Gellar DIP -45°

Total Depth 380'
 Logged By M. HLAVA
 Claim P 996006
 Core Size B. Q

DEPTH FROM	TO	RECOVERY	DESCRIPTION	SAMPLE No.	FROM	TO	WIDTH OF SAMPLE				
0.0'	82.3'	—	OBD								
82.3'	235.5'	95-100%	RYHOLITE. DARK GREY, APHANITIC. HIGHLY SILICIFIED. LOCALLY FRACTURED. MINOR QUARTZ- CABB. VEINLETS.								
235.5'	248.5'	100%	DIABASE BLACK. FINE GRAINED. CONTACTS SHARP AT 45° TCA.								
248.5'	287.0'	100%	DACITE. FINE GRAINED, DARK BLuish GREY. MINOR SERICITE.								
287.0'	380.0'	100%	RYHOLITE. THE SAME AS 82.3' - 235.5'								
			<i>Neilson Allan</i>								

DIAMOND DRILL RECORD

PROPERTY BRISTOL TWP

HOLE No. HG-8

DIP TEST		
Footage	Angle	
	Reading	Corrected

Hole No. HG-8 Sheet No. 1
 Section LINE 33+00E 17+00S
 Date Begun JAN 15/88
 Date Finished JAN 16/88
 Date Logged JAN 18/88

Lat. _____
 Dep. _____
 Bearing 180°
 Elev. Getter DIP -45°

Total Depth 394'
 Logged By M. HLAVA
 Claim P 996011
 Core Size 3.9

DEPTH FROM	TO	RECOVERY	DESCRIPTION	SAMPLE No.	FROM	TO	WIDTH OF SAMPLE						
0	62'	—	OBID										
79.0	140.0	100%	RHYOLITE TUFF Bx. LIGHT GREY; MINOR QTZ VEINLETS.										
140.0	150.3'	100%	RHYOLITE; GREY, FINE GRAINED 2" QTZ VEIN AT 142.1' 45° T.C.A.										
150.3	197.5'	100%	ANDESITE, LIGHT GREEN. MEDIUM TO FINE GRAINED SCHISTOSITY AT 40° T.C.A. HIGHLY CHLORITIZED.										
197.5'	210.0'	100%	ANDESITE, LIGHT GREENISH GREY, FINE GRAINED SLIGHTLY SILICIFIED. 3" QTZ VEIN AT 209.7' 60° T.C.A.										
210.0	214.0'	100%	ANDESITE, LIGHT GREEN, VERY FINE GRAINED, CHLORITIZED. QTZ VEIN AT 211.3' 30° 2"; 212.0' 15° 1"										
214.0	215.0	100%	QTZ VEIN, MASSIVE WHT WHITE, MINOR CARBONATE	101139	214.0	215.0							
215.0	217.0	100%	ANDESITE - THE SAME AS 210.0 - 214.0	101140	215.0	217.0							
217.0	222.5	100%	QTZ VEIN, MASSIVE, WITH MINOR CARBONATE, CHLORITE & PY.	101141	217.0	222.5							
222.5	288.3	100%	MAFIC TUFF; DARK GREENISH GREY, MODERATELY CHLORITIZED.										
288.3	297.0	100%	QTZ VEIN - SAME AS 217.0 - 222.5										
297.0	348.5	100%	ANDESITE, GREY, FINE GRAINED, HIGHLY SILICIFIED	101142	288.3	292.5'							
348.0	394.0	100%	ANDESITE GREENISH GREY, FINE - MEDIUM GRAINED MINOR QTZ VEINLETS										

Julian Howard



Name and Postal Address of Recorded Holder
R. C. Allerston | **M13613**
543 Pine Street North, Timmins, Ontario P4N 6L9

Summary of Work Performance and Distribution of Credits

Total Work claimed 1323'	Mining Claim			Mining Claim			Mining Claim		
	Prefix	Number	Work Days Cr.	Prefix	Number	Work Days Cr.	Prefix	Number	Work Days Cr.
for Performance of the following work. (Check one only)	<input checked="" type="checkbox"/> Manual Work	P 792792	63	P	792848	63	P	996008	63
	<input type="checkbox"/> Shaft Sinking Drifting or other Lateral Work.	792793	"		792830	"		996009	"
	<input type="checkbox"/> Compressed Air, other Power driven or mechanical equip.	792842	"		792831	"		996010	"
	<input type="checkbox"/> Power Stripping	792843	"		880865	"		996011	"
	<input checked="" type="checkbox"/> Diamond or other Core drilling	792844	"		880866	"		996019	"
	<input type="checkbox"/> Land Survey	792845	"		996005	"		996020	"
		792846	"		996006	"		996021	"
	* 792847	"		996007	"				

All the work was performed on Mining Claim(s): P996006 - P996008 inclusive and P996011

Total Footage from Drill Logs 2929'

Required Information eg: type of equipment, Names, Addresses, etc. (See Table Below)

Equipment: Diamond Drill JKS 300
 Contractor: Claude Lachapelle Diamond Drilling
 Box 477
 Belle Vallee, Ontario POJ 1A0

Work Period: December 7, 1987 to January 15th, 1988

Drill Core Size: BQ

Number of Drill Holes: 8

Excess Work Credits
 2929' - 2600' = 329' days
RECORDED
FEB 15 1988

PORCUPINE MINING DIVISION
RECEIVED
FEB 15 1988

ONTARIO POLYMER SUPPLY
 ASSISTANT FILEST
 OFFICE
MAY 20 1988

RE: CLAIMS P-792792, & P-792847
 RE: Telephone Conversation with Ralph Allerston April 22/88
 * - Mr. Allerston wanted the credits asked for by Cominco Ltd. (Received Feb. 24/88) to be applied and he would hold back on applying the work credits above. BB & DK.

Date of Report: Feb. 15, 1988
 Recorded Holder or Agent (Signature): Milan Hlava

Certification Verifying Report of Work **RECEIVED**

I hereby certify that I have a personal and intimate knowledge of the facts set forth in the Report of Work annexed hereto, having performed the work or witnessed same during and/or after its completion and the annexed report is true.

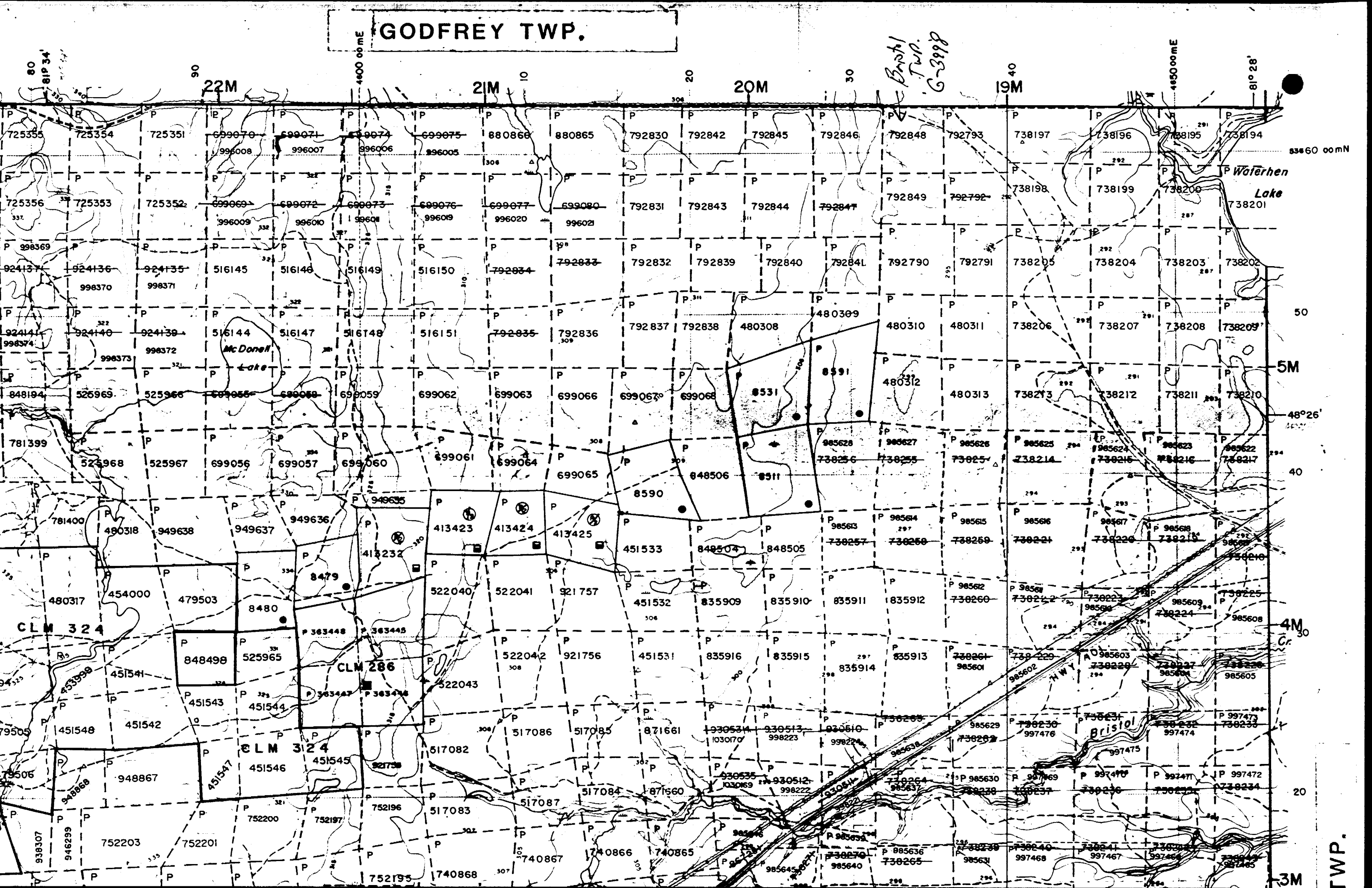
Name and Postal Address of Person Certifying
Milan Hlava, 24 Pine St S., P.O. Box 1163, Timmins, Ontario P4N 7H9

Date Certified: Feb. 15/88
 Certified by (Signature): Milan Hlava

Table of Information/Attachments Required by the Mining Recorder

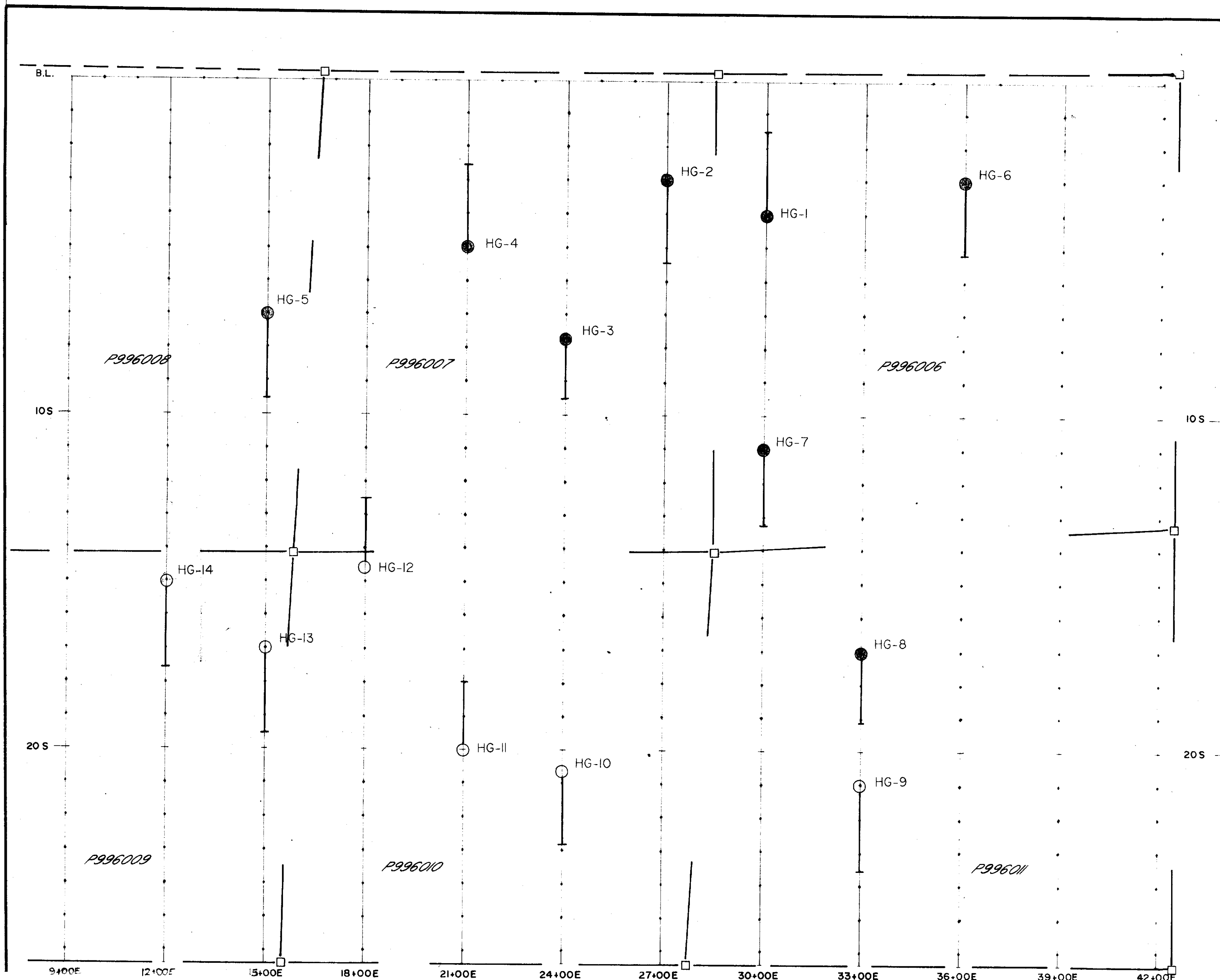
Type of Work	Specific information per type	Other information (Common to 2 or more types)	Attachments
Manual Work	Nil	Names and addresses of men who performed manual work/operated equipment, together with dates and hours of employment.	Work Sketch: these are required to show the location and extent of work in relation to the nearest claim post.
Shaft Sinking, Drifting or other Lateral Work			
Compressed air, other power driven or mechanical equip.	Type of equipment	Names and addresses of owner or operator together with dates when drilling/stripping done.	
Power Stripping	Type of equipment and amount expended. Note: Proof of actual cost must be submitted within 30 days of recording.		
Diamond or other core drilling	Signed core log showing: footage, diameter of core, number and angles of holes.	Nil	Work Sketch (as above) in duplicate
Land Survey	Name and address of Ontario land surveyor.		Nil

GODFREY TWP.



Brady Twp. G-3998

TWP.



200 0 200
 ONTARIO GEOLOGICAL SURVEY
 ASSESSMENT FILES
 OFFICE
 MAY 20 1988
 RECEIVED

HONCHO GOLD MINES INC.

BRISTOL TWP

D.D.H. LOCATION MAP

Date: November 1987
 Scale: 1"=200'

MAP:

