

# DIAMOND DRILL LOG

# 2. 22362

DRILLING COMPANY		COLLAR ELEVATION		DIP		BEARING		CLAIM NO.		LOCATION		HOLE NO.		PAGE NO.			
SALO								1231462		LINE 20+00 N 2+80 E		SM.00.02		1			
START DATE		COMPLETION DATE		DATE LOGGED		COLLAR		MAP NO.		PROPERTY NAME		COMMENTS					
JUNE 17/2000		JUNE 27 2000		JULY 02-15, '00		100 m				WHITESIDES		CASING REMAINS					
EXPLORATION CO.; OWNER; OPTIONEE				LOGGED BY				TOTAL FOOTAGE									
STARFIRE MINERALS INC.				BKP. IK				200.0 m									
FOOTAGE		ROCK TYPE		DESCRIPTION						PY		SAMPLE FOOTAGE		SAMPLE LENGTH		ASSAYS	
FROM	TO			COLOUR; GRAIN SIZE; TEXTURE; MINERALS; ALTERATION; ETC.						%		FROM	TO	LENGTH			
0	3.0	ONB															
3.0	14.0	7		L CG GRANITIC-GRANODIORITIC FELSIC INTRUSIVE. GENY BLACK & WHITE BUT LOCY GREENISH. MIN FG GREEN INT' PROBABLY ALTH. FIRST 1 METER IS FG													
				A LOC SERIC ALTN, IMPARTS GREEN & SOFT NATURE MIN, LOCL SILC ALTN MIN OXDN OF FRAC MIN BROWN BLOTCHES													
				S WEAK S <sub>q</sub> (1) @ ≈ 40 DTCA MIN CA // 1/2 REG J. ± QCVNLT'													
				M TR BY DISSD THRU 1% PY ASSD W 2m @ 6.5-6.8m													
14.0	21.2	8		L GENY FG MAELC INT. ROCKS (POSSIBLY Z) LOCY FELD BLAST DEVD. LOCY MG SMALL Z DIKE @ 19.3-19.5m													
				A LOCY INTENSE QC/SER ALTH IN TIGHT, LOW Z NETWORKS AF CRISP QC ± SER FRAC FILLED J MIN OXDN BLEACHING @ EOINT., INDISTINCT LCT, SHARP UCT													
				S S <sub>q</sub> (1) PORD J @ 45-60 DTCA AF CRISP @ 80 DTCA MIN 15 DTCA QC/SER J													
21.2	26.4	4		L INTENSELY ALTD B OR, MORE PROBABLY A FELSIC VOLCANIC UNIT. PROT TEXTURES ORBITERATED. LOCY MIND W PY, P <sub>2</sub> ± TR CRV POSSIBLY SOME DIFFUSE FELSIC BLENDING													
				A PER SERIC & SILC ALTN LOC PURPLE HEMC ALTN (?) PATCHES OF FELDSPAR LOSS LATE, SOME SERIC, ASSD SULFIDE MIN CHL ASSD W SOME FRAC STRUCTURES LOOK ANNEALED INTENSE ALTN GENY													
				S S <sub>1</sub> (?) MODY DEVD @ 50 DTCA													



42A05NW2010 2.22362 MASSEY

010

FOOTAGE		ROCK TYPE	DESCRIPTION COLOUR: GRAIN SIZE: TEXTURE: MINERALS: ALTERATION: ETC.	PY %	SAMPLE FOOTAGE		SAMPLE LENGTH	ASSAYS			
FROM	TO				FROM	TO		Cu (PPM)	Zn	Pb/Ni	
			ANNEMILLED FRAC' @ VACA								
			M PATCHY, STRINGER TYPE MINN TO 4% LOGY, BLEBBY P <sub>0</sub> + P <sub>1</sub> + Tr Cpy LOGY VUGGY								
		Cu, Pb, Zn ↓ + PGE	21136 INTENSE ALTN (SER, CHL, SILN), MAFIC SEAM (Zcm) HOST 10% VEG. DISS P <sub>1</sub>	TR	21.2	22.3	25	61	1	-	
			21137 " " + MIN HEMC ALTN	TR	22.3	23.2	25	41	2	-	
			21138 INCREASING HEMC ALTN + ↑ P <sub>1</sub> + P <sub>0</sub>	TR	23.2	24.0	22	38	1	-	
			21139 INTENSE ALTN 2% BLEBBY SEAMY P <sub>0</sub> + Cpy + 2% LATER BB P <sub>1</sub> P <sub>0</sub> Cpy LOOK PRIMARY, P <sub>1</sub> LOOKS SECONDARY. BEST MINN IN INT (+Ni)	7	24.0	25.2	155	80	1	31	
			21140 Waning ALTN, MORE 8 CHARACTER (+PGE)	TR	25.2	26.4	112	83	1	-	
26.4	32.9	8	SAA DARK GREY F-M.G 8 w LOCAL WKLY LAYERED FELDS. SLASTS A ALTN ↑ WITH DEPTH S NUM S <sub>0</sub> // J TO ASSD SER/CHL HALDES J <sub>0</sub> @ 45-50 DICA AE J @ 60 DICA M NONE EVIDENT								
32.1	43.4	7/8 FEL. DIKE	L MIXED LITHOLOGY, 8 AS ABOVE w ALTN, GRANODIORITIC INTENSIVE & DISTINCT F.G. FELSIC DIKE (34.4-34.8m), CT' VARIABLE ↑ + 36.6-37.2m A ALTN INCL. SER/SILN IS INTENSE ≈ FELSIC DIKES LOGY ABLIN BROWN BLOTCHY ALTN (ESP IN 7) S CT' IRREG. TO SHARP, OFTEN 45-60 DICA S <sub>0</sub> // 45 DICA (// FELSIC DIKE?) VF J' ≈ FRAC' M LOC NET TEXT P <sub>0</sub> w Tr Cpy								
			21141 10% P <sub>0</sub> ± Cpy NET TEXTURED IN ALTD 8, SEAMY LOGY VUGGY, Cpy OCCUPIES FRAC', MIN OXPH	10	32.2	33.6	509	89	1	62	
			21142 FELSIC DIKE + MIN ALTD 8, LAMD ALTN	TR	33.6	35.0	63	122	1	-	
			21143 MIXED 7, 8 FELSIC DIKE	TR	35.0	36.4	27	103	1	-	
			21144 FELSIC DIKE, MIN SEAMY S <sub>0</sub> // P <sub>0</sub>	TR	36.4	37.6	58	83	1	-	
43.4	48.4	8	L SA 8 INT' ABOVE, V DARK NEAR JOINT A MIN QTZ VEINLETS ± CHL (UP TO Zcm) J SAA M V TR P <sub>1</sub> ASSD w FRAC' ± J' 21145 DARK 8 w TR P <sub>1</sub> (ASSD w J' ALTN?)								
				Cu, Pb, Zn, Ni, PGE	TR	47.0	48.4	234	57	1	6A

121 PPM Cu

FOOTAGE		ROCK TYPE	DESCRIPTION COLOUR; GRAIN SIZE; TEXTURE; MINERALS; ALTERATION; ETC.	PY %	SAMPLE FOOTAGE		SAMPLE LENGTH	ASSAYS		
FROM	TO				FROM	TO		Cu	Zn	Pb/Ni
40.4	55.9	B/7/SULFIDE	L DOMY 8 WITH NUM THIN 7 DIKES + SEVERAL SULPHIDE HORIZONS							
			A MIN QC ALTH AS VEINLETS CHL/SER ALTH ASSD W J' 2 FRAC' IN 8							
			S J' @ 50-70 DTCA AF J' @ 30 DTCA 7 CT' OFTEN SHARP @ 60-70 DTCA MINN @ 80 DTCA							
			21146 3% SEAMY P <sub>0</sub> +P <sub>1</sub> +tr Cpy IN BROWN ALTH ASSD W 7 BELOW MINN IS LACY NET TEXT Cu Pb Zn Ni Co	3	48.4	49.3	432	44	1	37
			21147 5% SEAMY P <sub>0</sub> +P <sub>1</sub> +tr Cpy, NET TEXT, STIZINGERY 2 SEAMY, DARK 8 @ EDINT Cu Pb Zn Ni Co PGE	5	51.4	52.2	240	73	1	77
			21148 SILD 8 2 7 (?) W ABUN LOW 4 STRUCTURE, 3% P <sub>0</sub> +P <sub>1</sub> +Cpy over 10cm Yuggy seamy P <sub>0</sub> +Cpy, less py. GENY IN 7 Cu Pb Zn Ni Co PGE	3	52.2	52.9	138	110	1	38
55.9	60.2	B	L SAA (INTERVALS OF 8) + MIN Fg 7							
			A AF LOW 4 QTZ BLEBS							
			S MIN LOW 4 QTZ BLEBS IN J' AF J' @ 60-80 DTCA							
			M NONE EVIDENT							
60.2	74.4	7	L CG GRANITIC - GRANODIORITIC INT ROCK, QTZ IS OFTEN BLUSHI 61.9-62.5m THIN ALTD 2m ?							
			A LOC W/ OXDN MIN CHL INJECTION							
			S COMPETENT ROCK, 2E J' @ VACA Soj. W/ KY DEVD @ 50 DTCA							
			21149 ALTD 2m W QC, SER, SHEARED (+magnetite) Cu Pb Zn Au Ag	TR	61.9	62.5	66	131	1	-
			21150 1% VEIN MARGIN P <sub>1</sub> +tr Cpy IN FRAC Cu Pb Zn Au Ag	1%	66.7	68.2	52	62	1	-
			21201 2% P <sub>1</sub> +P <sub>0</sub> +Cpy FRAC CONTROLLED SEAMY, BLEBBY Cu Pb Zn Au Ag Ni	2%	68.2	69.7	134	47	1	13
			21202 2% BB P <sub>1</sub> ASSD W FRAC' (LOW 4 ?) Cu Pb Zn Au Ag							
74.4	85.6	F2/NUM DIKES/8	L STGY OXDD FZ + NUM DIKES (VARIOUS COMPOSITIONS) + STGY ALTD 8							
			74.4-75.4 STGY ALTD 8, SILD, FRAC 2 ANNEALED, QTZ CHL INT							
			75.4-75.8 STGY OXDD FZ ASSD W DIKE (7) 45 DTCA, ORANGE, BROK							
			75.8-76.1 STGD/SHEARED 7 ?							
			76.1-76.2 FEL DIKE (SHEARED) W ABUN FUCHSITE 45 DTCA							
			76.2-76.3 ORANGISH 7 DIKE 60 DTCA							
			76.3-76.4 CG DGREEN MAFIC DIKE (AMPH?) LATE, CRISP 45 DTCA TR 8							

FOOTAGE		ROCK TYPE	DESCRIPTION <small>COLOUR; GRAIN SIZE; TEXTURE; MINERALS; ALTERATION; ETC.</small>	PY %	SAMPLE FOOTAGE		SAMPLE LENGTH	ASSAYS		
FROM	TO				FROM	TO		Cu	Zn	Pb/Ni
			76.4 - 78.6 ALTD B ? (PARAGNEISS ?) V SILC, RECRYST PYROX, MIN HEMC ALTN, MIN CHL							
			78.6 - 78.8 7 V SILC							
			78.6 - 85.6 MIXED 7 (?), ABUN ALTN, BROWN CLOTS, SILN, CULN GENY 45 DTCA, TR SULPH AS FRAC FIL - DISSN							
			21203 ALTD B TR P <sub>2</sub> P <sub>4</sub> AS BLOTCHES	Cu Pb Zn	TR	74.4	75.4	24	71	1 -
			21204 VARIOUS DIKES + OXDD FZ ?	Ag Cu Pb Zn Ni PGE	TR	75.4	76.8	71	66	2 140
			21205 SILD B, HEMC ALTN + 7, TR P <sub>2</sub> BLOTCHES	Cu Pb Zn	TR	76.8	77.9	14	28	2 -
			21206 VEG SILC DIKE	Cu Pb Zn	TR	77.9	78.6	13	40	1 -
			21207 ALTD FELSIG DIKE + 7, BROWN, SERC, MIN CHL	Cu Pb Zn	TR	82.3	83.6	35	44	1 -
			21208 SDA	Cu Pb Zn	TR	83.6	85.0	115	42	1 -
85.6	96.1	B	L MG MAF INTRUSIVE ROCK, MIN LOCD BX W QC + BLCHG							
			A MIN QTZ CHL VNLTs HALOES OF QTZ/SER ± FRAC							
			S Soft INDISTINCT J' @ VACA GENY 60-70 DTCA QCVNT W CHL @ 70-80 DTCA							
			21209 B W QSER J' TR BLEBBY P <sub>2</sub>	Cu Pb Zn Ni PGE	TR	94.2	95.6	65	36	1 75
			21210 CT W MIND 7 BELOW, DRWN SPECKLED LOW L QCV	Cu Pb Zn Ni PGE	1	95.6	96.1	94	57	1 71
96.1	114.7	FELSIC DIKES (?)	L ODD ROCK, PROBABLY SEVERAL FELSIG DIKES, MIN B NEAR TOP OF INTERVAL. LOGY LAMD V ALTD. POSSIBLY TUFACEOUS 110-120m							
			A SEVERE SILN SPECKLED BROWN - PURPLE ALTN LOGY RECRYST CHL INJECTION MOTTLED THRU							
			S LAM @ 45-70 DTCA LOG LOW L STRUCTURE W ± 10cm DISP. (15-20DTCA)							
			M TR P <sub>2</sub> + P <sub>4</sub> LOGY, EQINT HAS SIGNIFICANT SULPHIDE							
			21211 1% SEAMY P <sub>4</sub> ASSD W SPECKLED QCV @ TOP OF INT + NUM SPECKLED VEINS ± MIN REMNANT B	Cu Pb Zn	1	96.1	97.6	83	53	1 -
		CHECK	21212 ABUN BROWN SPECKLED QCV (SPHAL ?)	Cu Pb Zn Ag	-	98.1	99.2	36	50	1 -
			21213 DARKER, MOTTLED MATERIAL W SILN, CHL ± 1% P <sub>2</sub> , P <sub>4</sub> BLEBS	Cu Pb Zn	1	107.6	108.8	32	64	1 -
			21214 " " " " " "	Cu Pb Zn	1	108.8	110.0	11	67	1 -
			21215 2% BLEBBY P <sub>2</sub> IN FELSIG DIKE (OR FLOWS ?) LOGY NET TEXT ± ASSD W SILC ALTN	Cu Pb Zn Ni PGE	2	112.6	113.9	273	144	1 -
			21216 1% BLEBBY P <sub>2</sub> IN LAMD FELSIG ROCK	Cu Pb Zn	1	113.9	114.7	96	125	1 -

FOOTAGE		ROCK TYPE	DESCRIPTION COLOUR; GRAIN SIZE; TEXTURE; MINERALS; ALTERATION; ETC.	PY %	SAMPLE FOOTAGE		SAMPLE LENGTH	ASSAYS			
FROM	TO				FROM	TO		Cu	Zn	Pb/AI	
114.7	131.3	NIP 8/7/SULFIDE	L NUM GRG WITH FELSIC DIKES OF VARIOUS NATURE TO EXTREMELY ALTD MAFIC INTRUSIVE ROCK INTERVENING, ALTD 8 OFTEN MINERALIZED TO VARIABLE P <sub>1</sub> P <sub>2</sub> ± tr cpy, LAMINATED & CONTORTED								
			A - INTENSE ALTN (DIVE RELATED) THRU INC SILN CHLN SEEN & LOC ALBITE - DIKES SHOW LOCK STR PURPLE HEMATITIC ALTN SILN & SEEN WITH SOME SULFIDE, LOC BROWN-PINK BLOTCHY ALTN, LOC MAGNETITE & SOME HONEY ORANGE ALTN / OR SULFIDE @ 127-127.5m. BIOTITE & MAGNETITE YELD SPECKLED CHARACTER LOCK - REMNANT 8 IS HIGHLY SILD, HAS QVNITS, SEIZ CHL DEVT & SHOWS LOC AMPH RECRYST. SOME REMNANTS ARE HEAVILY MIN'D								
			S 5% GENY, WELL DEVD @ 35-45 DICA DIKE CT GENY CRISP DISTINCT 45° TCA ⊥ 5% STRUCTURE -- CHL/PY BEARING (P <sub>2</sub> ) LOW L STRUCTURE @ 20-25 dtez prominent 25SD W MINN (S LOCK), SIG DISP ON SOME LOC STRONG CONT/ROTATION IN LAMINAE IN 8 (?) ABUN J NEAR EOINT.. SOME CHL + PY								
			M SIGNIFICANT STRINGERZ TYPE P <sub>0</sub> = P <sub>1</sub> = Cpy MINN ASSD W V STRONG DIVE ASSD ALTN.								
			21217 7 DIMP W MIN ALTD 8 ABUN DRILL BRASS TR PY IN 45 DICA ⊥ J'	TR	114.7	116.0		12	51	1	-
			21218 3' DISSD P <sub>0</sub> = P <sub>1</sub> IN V DARK, CG 8, RELATIVELY UNALTD	3	116.0	116.3		22	152	1	23
			21219 7 DIVE ? GRADATION CT @ TOP ? LAMINATED, HIGHLY ALTD W SEEN SILN TR MAG, 1-2% PY IN ALTN		116.3	117.5		74	118	1	-
			21220 LAMP, CONTD 7 DIVE ? OR 8 ?, MAGNETITE, STRINGERZ P <sub>0</sub> ASSD W CHL & LOW L STRUCT' TR Cpy, TR PY	3	117.5	119.0		508	115	1	117
			21221 40 cm 40% P <sub>0</sub> + P <sub>1</sub> + tr cpy, LOW L STRUCTURE SYN MINN ? ABUN SIL, SHARP CT W B TO E O INT. MINN NET TEXT, CONTD	25	119.0	119.6		408	84	1	-
			21222 DIKE, SUBGVEISSIC W BROWN/PINK ALTN, SEEN	-	119.6	120.5		11	81	1	-
			21223 DIKE (?), SAA W TR BLEBBY-SEAMP P <sub>0</sub>	TR	120.5	122.0		13	83	1	-
			21224 CG DIKE, JOINTING W PY TR BLEBBY P <sub>0</sub> + P <sub>1</sub> + BIOTITE ? " "	TR	125.0	126.5		19	133	1	-
			21225 JOINTING W TR-1% PY, CT W FG DIKE (?) 35 DICA, DIKE HOSTS WEATHERED BIOTITE, BROWN ALT OR SPHAL. HONEY ORANGE STRINGERY BLEBS & DISS	1	126.5	127.4		59	2490	392	-
			21226 DIKE (?) HEMCALIN ALBITE ?, POSS SPHAL	TR	127.4	128.0		47	167	21	-
			21227 MIN ST SULFIDE @ EOINT (50/80 tr cpy) LOW L QV (Bx 10 dtez)	TR	128.0	129.5		83	118	1	-
			21228 5% STRINGER P <sub>0</sub> CONTORTED LAM. j @ 45 W PY + CHL/SILN	S	129.5	130.3		272	82	1	89
			21229 SAA	Ni 4	130.3	131.3		328	86	1	72

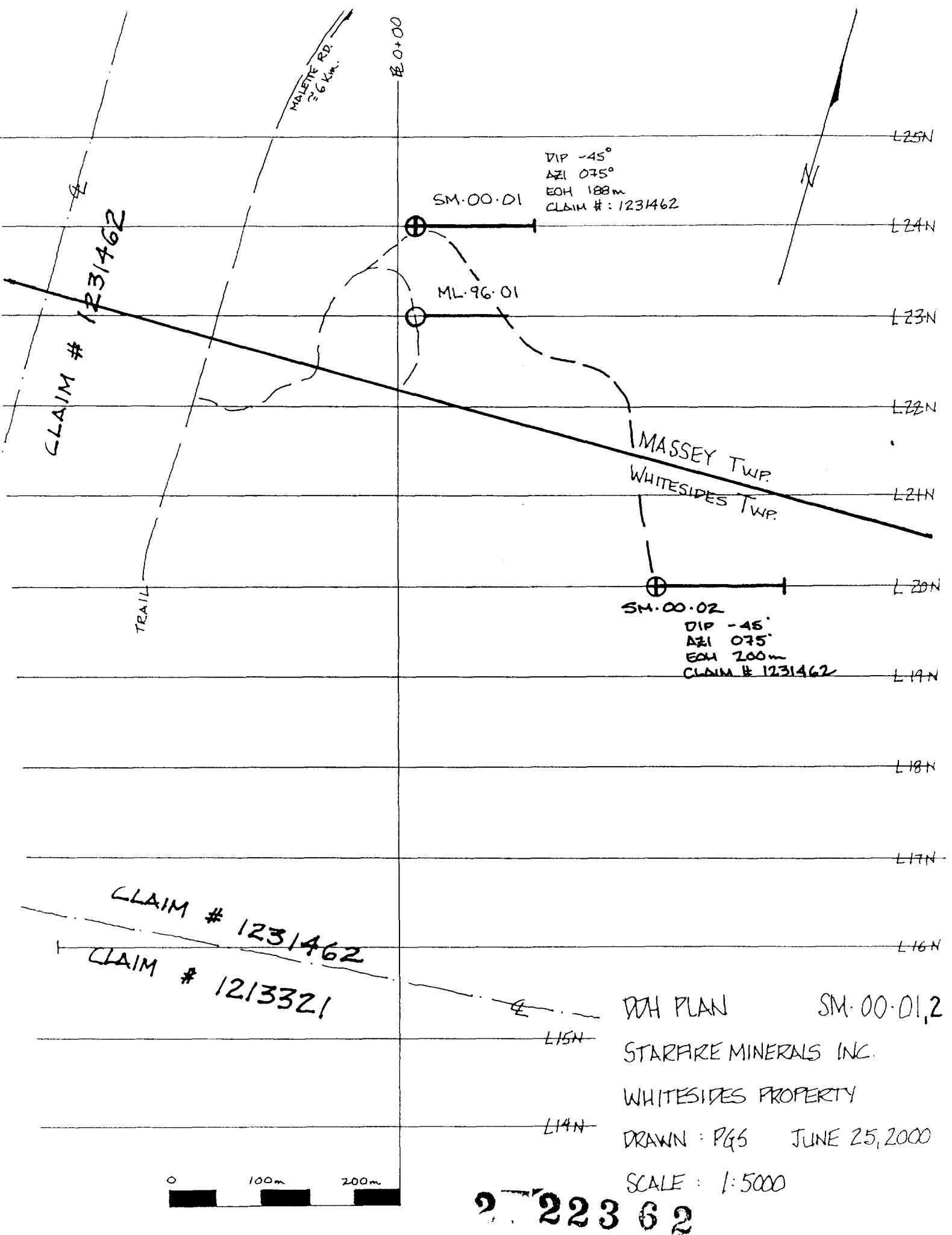
FOOTAGE		ROCK TYPE	DESCRIPTION COLOUR; GRAIN SIZE; TEXTURE; MINERALS; ALTERATION; ETC.	PY %	SAMPLE FOOTAGE		SAMPLE LENGTH	ASSAYS		
FROM	TO				FROM	TO		Cu	Zn	Pb/Ni
131.3	133.4	7 DIKE	GENY DARK VCG GRANITIC DIKE AF FLAG BLASTS < 3mm SUB @ CRISP CT @ 45 DTCA MIN PINK ALTN SER QU AT EDINT DE J ⊥ So 45 DTCA (MIN OXDN)							
133.4	162.5	8	L GENY MSV GREY GREEN MG GABBRO W 70% SMALL FELDS SPECKLES FG ROCK 133.4 - 134 MAY BE MAFIC DIKE (HOSTS DISS SULFIDE) FELS DIKE 134 - 134.5m AF QTZ VEINS & GRANITIC <del>DIKE</del> ASSD DIKES 148 - SOME SPECKLED 'A SMALL SCALE CHL ALTN + AF CHL INJECTIONS J' ALTD HALOE (SER, SILN) > 50 dtca (+ TR MAG) AF QTZ-PY VEINS 45 dtca  S J' PREDOM > 50 dtca AF 45 DTCA QTZ PY ⊥ So 7 dikes & QCV 45 DTCA // So LOW < STRUCTURE ASSD W KORE MINN 148.3m  L COARSE GRAINED AFTER 152m  M TR PY W SERC & BROWN ALTN, LOW < STRUCTURE @ 148.3 21230 TR FG-VFG DISS PY IN CG B CHECK 21231 MG B W QCV + TR MINN (LOW <), AF 45 DTCA QTZ PY VEINLETS "NO RETR " 21232 COARSE GRAINED B, TR PY 21233 MG B, LOW < IREG QTZ PY VEINLET (1cm) HOSTS 1/2 PY FGE Cu Pb Zn Ni TR 146.0 147.5 76 57 1 94 "NO RETR 147.5 149.0 12 47 1 29 Cu Pb Zn Ni TR 153.5 155.0 12 40 1 28 Au Cu Pb Zn 1 159.7 160.6 189 32 1 -							
162.5	169.5	7	GRANITIC-GRANODIORITIC DIKE, V CG  MIN CHLN ALTN & RECRYST ALONG 45 DTCA ANNEALED J' (?) AF MAGNETITE ISLEBS & SMALL SEAMS So WIKLY DEVD 50 DTCA  5-10% po + 1% cpy ON MARGINS OF LOW < QCV  21234 1cm DOWN < QCV W 30% Po + AF 45 DTCA QTZ PY VNLTS (5mm) Cu Pb Zn 10 165.8 166.8 840 55 1 - check 21235 SAA 2cm, LOW < STRUCTURE APPEARS TO CUT CRY STRINGER RUNNING ⊥ TO IT. TR CRY IN 45 DTCA J' Au Cu Pb Zn Ni PGE 8 166.8 167.8 1150 61 1 9 LOW < (10-15 DTCA) 21236 210cm QTZ BLEB W 10% Po + LOW < STRUCTURE Cu Pb Zn 5 167.8 169.0 355 66 1 -							

only for Au/Ag

FOOTAGE		ROCK TYPE	DESCRIPTION COLOUR; GRAIN SIZE; TEXTURE; MINERALS; ALTERATION; ETC.	PY %	SAMPLE FOOTAGE		SAMPLE LENGTH	ASSAYS					
FROM	TO				FROM	TO		Cu ppm	Zn ppm	Pb ppm	Ni ppm		
169.5	187.9	8	L GENY MSV GREY GREEN MG - CG GABBROIC ROCK W 5-6% FELDSPAR... MAY BE SILL SERIES, LCLY MAGC N BROWN ALTN (BLOTCHES) STARTS @ 170M PER & CHANGING TO PINK @ 178 AF FELSIC DIKES (GRANITIC) & FG NEAR JOINT S @ 45 dikes @ 45 AF JOINTS I @ 45 DIKE AF LOW L J' M TRZ FB LOCK, AF INTERVALS OF V MAGIC ROCK (GENY FG) HOST DISS P <sub>2</sub> +P <sub>3</sub>										
		check	21237 MG 8, CHLC INJECTIONS, MOD BROWN BLOTCH ALTN, Ni Cu Pb Zn	-	172.9	174.4		35	45	1	67		
			21238 " " PINK/PETZASIVE ALTN Ni Cu Pb Zn	-	180.5	182.0		160	30	1	151		
			21239 " " Po.Cly seam 45 dtkz Ni Cu Pb Zn	TR	182.0	183.4		784	44	1	181		
		check	IN CG 8 21240 EG MAGIC SILL(?) SY FINELY DISSD P <sub>2</sub> +P <sub>3</sub> Ni Cu Pb Zn	PGE S	183.4	184.1		577	25	1	242		
			21241 " " " " " Ni Cu Pb Zn	S	185.6	186.0		36	38	1	218		
			21242 CG 8 AF THIN FELS DIKES MIN QC/CHL ALT Ni Cu Pb Zn	-	186.0	187.0		3	56	1	53		
			21243 CG 8 LCLY MAGNETIC Ni Cu Pb Zn	-	187.0	187.9		8	69	1	86		
187.9	192.4	7 (GRAN) / 8 / 7 (EEL)	NUMEROUS GRANITIC DIKES, AF THIN FELSIC DIKES W ANNEALED/SILC FRAC' MAGIC INT' CHLORITIZED QCV' IN 8 #/FRAC' QC CT' @ 45 dtkz QCV' @ 45 1 ct' TRZ PY IN CG 8										
			21244 GRANITIC DIKE Ni Cu Pb Zn	TR	187.9	188.8		25	65	1	7		
			21245 SILD FELSIC DIKE, LAMIN, CHLN TR PY IN CHLC WITS & JOINTS Ni Cu Pb Zn	TR	188.8	189.2		7	39	1	14		
			21246 15cm GRAN DIKE IN 'DK CHLD 8 (CHLD) ±45 dtkz (lamin) "	-	189.2	190.4		3	35	1	31		
			21247 15cm FELSIC DIKE SUBGRAPHIC(?) TEXT "	T	190.4	190.5		3	29	1	23		
			21248 DK GRN CHLD 8 & 70cm OR INTENSE SILC FLOODING + LATER QCV' SER "	-	190.5	190.7		1	39	1	17		
		check	21249 GRANITIC DIKE "	-	190.7	191.3		3	29	1	23		
			21250	-	191.3	192.4		22	55	1	10		
192.4	200.0	CG 8	L CG, DK GRN, 8 LCLY FELDSPAR PHYRIC (ESP ABOVE 198.5m) A LCLY MOD-STR CHLC ALTN COINCIDENT W FELD' AF THIN LCLY SHEARED QC VNLTs @ ST S AF CHLC J' @ 50 dtkz										

FOOTAGE		ROCK TYPE	DESCRIPTION <small>COLOUR; GRAIN SIZE; TEXTURE; MINERALS; ALTERATION; ETC.</small>	PY %	SAMPLE FOOTAGE		SAMPLE LENGTH	ASSAYS					
FROM	TO				FROM	TO		Cu	Zn	Pb	Ni		
			M. NONE EVIDENT										
			21251 CT W DIKE, CG 8, DE LOW L CHLC J'			192.4	194.0	6	42	1	48		
			21252 CG 8 (WASING FELDSPAR), SECC ALTN(?), LESS CHL			199.0	200.0	3	30	1	50		
200.0		EOH											
			COZE STORED										
			RESAMPLING JULY 15 (0-186m)										
			X2501 CG 8 W MIN QC ALTN OF J', MIN CHLH / CHECK BETWEEN ANOMALOUS ASSAYS	-		29.0	30.0	95	64	1	-		
			2502 GREY M-CG 8 MIN QC	-		30.0	31.5	108	65	1	-		
			2503 " " MIN OXIDN EOINT, MIN XSTALLINE CHL "	-		31.5	33.0	8	75	1	-		
			2504 F dike possible sphyl abun brown altm (15cm CHLD 8)	tr		42.2	43.3	63	78	1	-		
			2505 CHLD 8 MIN QCSER (CHL)	-		43.3	44.8	2	72	1	-		
			2506 CHLD 8, FELDS. PHYLIC, MIN QCSER (CHL)	-		44.8	45.8	1	57	1	-		
			2507 " " 2cm BLK RECR QTZ VEIN IN "	tr		45.8	47.0	10	62	1	-		
			RECRYST CHL										
			2508 F DIKE 2% dpy along low L frac'			49.3	49.6	17	58	1	-		
			2509 CHLD 8 W MIN QC	-		49.6	50.5	1	63	1	-		
			2510 " " MIN F dikelets	-		50.5	51.4	3	56	1	-		
			2511 CG 8 W CHLC ALTN, MIN QC ALTN	-		54.9	56.0	2	59	1	-		
			2512 " " LOC RECRYSTN	-		59.0	60.2	35	55	1	-		
			2513 ALT 8/7 ABUN CHL, PINK ALTN ALBITE	TR		122.0	123.5	47	130	1	18		
			2514 COMPLEX 8/3 HYDRIZATION, V MAGNETIC	TR		123.5	125.0	91	114	1	22		
			2515 LOW L STRUCTURE (QCHLD) CHLC ALTN 7/8			164.3	165.8	278	61	1	7		
			2516 REST OF GRANITIC DIKE			169.0	169.5	56	79	1	18		
			2517 TR R, P + Cpy IN CHLC 8 + 1 10cm F DIKE			169.5	170.9	31	52	1	70		
			2518 LOCAL BLCHG, BROWN ALTN (COARSE BLEBBY PATCHES) CHL			173.0	178.0	22	23	1	57		
			2519 CG 8 MIN BROWN ALTN, CHLC PURPLE TINT			178.0	179.0	21	16	1	47		
			2520 " " LESS ALTN TR SCAMY Py + Cpy IN CHLC altm			179.0	180.5	174	27	1	92		
			2521 M-CG 8 CHLC ALTN, QC ALTN w thin fels + gran dikes			184.1	185.6						





22362



Established 1928

# Swastika Laboratories Ltd

Assaying - Consulting - Representation

Page 2 of 2

## Geochemical Analysis Certificate

0W-2194-RG1

Company: **STARFIRE MINERALS INC**

Date: JUL-12-00

Project: **SM-00-2**

Attn: **M. Caron**

We hereby certify the following Geochemical Analysis of 56 Core samples submitted JUL-09-00 by .

SM-00-02

Sample Number	Au Au Check PPB	Ag PPM	Co PPM	Cu PPM	Ni PPM	Pb PPM	Zn PPM	Pt PPB	Pd PPB
21216	-	-	-	96	-	1	125	-	-
21217	-	-	-	12	-	1	51	-	-
21218	-	-	-	22	23	1	152	<5	<5
21219	3	-	0.3	74	-	1	118	-	-
21220	-	-	-	508	-	1	115	-	-
21221	-	-	-	408	117	1	84	<5	<5
21222	-	-	-	11	-	1	81	-	-
21223	-	-	-	13	-	1	93	-	-
21224	-	-	-	19	-	-	133	-	-
21225	-	-	-	59	-	392	2490	-	-
21226	-	-	-	47	-	21	167	-	-
21227	-	-	-	83	-	1	118	-	-
21228	-	-	-	272	89	1	82	-	-
21229	-	-	-	328	72	1	86	-	-
21230	-	-	-	76	94	1	57	<5	<5
21231	-	-	-	12	29	1	47	-	-
21232	-	-	-	12	28	1	40	-	-
21233	2	-	0.2	189	-	1	32	-	-
21234	-	-	-	640	-	1	55	-	-
21235	2	2	-	150	9	1	61	<5	<5
21236	-	-	-	35	-	1	66	-	-
21237	-	-	-	35	67	1	45	-	-
21238	-	-	-	50	151	1	30	-	-
21239	-	-	-	50	181	1	44	-	-
21240	-	-	-	577	242	1	25	<5	<5
21241	-	-	-	36	218	1	38	<5	<5

One assay ton portion used.

Certified by Denis Chantre

1 Cameron Ave. P.O. Box 10, Swastika, Ontario P0K 1T0

Tel: (705) 642-3244 Fax (705) 642-3300

2. 223 62



Established 1928

# Swastika Laboratories Ltd

Assaying - Consulting - Representation

Page 1 of 2

## Geochemical Analysis Certificate

OW-2194-RG1

Company: **STARRFIRE MINERALS INC**

Date: JUL-12-00

Project: SM-00-2

Attn: aron

We hereby certify the following Geochemical Analysis of 56 Core samples submitted JUL-09-00 by

SM-00-02

Sample Number	Au Check PPM	Ag PPM	Co PPM	Cu PPM	Ni PPM	Pb PPM	Zn PPM	Pt PPB	Pd PPB
21136	-	-	-	25	-	1	61	-	-
21137	-	-	-	25	-	2	41	-	-
21138	-	-	-	22	-	1	38	-	-
21139	-	-	-	155	31	1	80	-	-
21140	-	-	-	112	-	1	83	<5	<5
21141	-	-	121	609	62	1	89	<5	<5
21142	-	-	-	63	-	1	122	-	-
21143	-	-	-	27	-	1	103	-	-
21144	-	-	-	58	-	1	83	-	-
21145	-	-	23	234	64	1	57	<5	<5
21146	-	-	27	432	37	1	44	<5	<5
21147	-	-	86	240	77	1	73	<5	<5
21148	-	-	15	138	38	1	110	<5	<5
21149	9	0.1	-	66	-	1	131	-	-
21150	3	0.2	-	52	-	1	62	-	-
21201	3	0.2	-	134	13	1	47	-	-
21202	2	0.1	-	94	-	1	88	-	-
21203	-	-	-	24	-	1	71	-	-
21204	2	0.1	-	71	140	2	66	<5	<5
21205	-	-	-	14	-	-	28	-	-
21206	-	-	-	13	-	1	40	-	-
21207	-	-	-	35	-	1	44	-	-
21208	-	-	-	115	-	1	42	-	-
21209	-	-	-	65	75	1	36	<5	<5
21210	-	-	-	94	71	1	57	<5	<5
21211	-	-	-	83	-	1	53	-	-
21212	2	-	-	36	-	1	50	-	-
21213	-	-	-	32	-	1	64	-	-
21214	-	-	-	11	-	1	67	-	-
21215	-	0.7	-	273	-	1	144	<5	<5

One assay ton portion used.

Certified by

*Denis Chretien*

2. 223 62



Established 1928

# Swastika Laboratories Ltd

Assaying - Consulting - Representation

Page 1 of 2

## Geochemical Analysis Certificate

0W-2311-RG1

Company: **STARFIRE MINERALS INC**  
Project: **SM-00-2**  
Attn: **M. Caron**

Date: JUL-24-00

We hereby certify the following Geochemical Analysis of 48 CORE samples submitted JUL-19-00 by .

SM-00-02  
←  
SM-00-02 RESAMPLING  
→

Sample Number	Au Au Check	Ag	Cu	Ni	Pb	Zn	Pt	Pd
	PPB	PPB	PPM	PPM	PPM	PPM	PPB	PPB
2501	-	-	-	95	-	1	64	-
2502	-	-	-	108	-	1	65	-
2503	-	-	-	8	-	1	75	-
2504	-	-	-	63	-	1	78	-
2505	-	-	-	2	-	1	72	-
2506	-	-	-	1	-	1	57	-
2507	-	-	-	10	-	1	62	-
2508	-	-	-	17	-	1	58	-
2509	-	-	-	1	-	1	63	-
2510	-	-	-	3	-	1	56	-
2511	-	-	-	2	-	1	59	-
2512	-	-	-	35	-	1	55	-
2513	-	-	-	47	18	1	130	-
2514	-	-	-	91	22	1	114	-
2515	-	-	-	278	7	1	61	-
2516	5	-	0.1	56	18	1	79	-
2517	-	-	-	31	70	1	52	-
2518	-	-	-	22	57	1	23	-
2519	-	-	-	21	47	1	16	-
2520	-	-	-	174	92	1	27	-
2521	-	-	-	4	52	1	37	-
21242	-	-	-	3	53	1	56	-
21243	-	-	-	1	36	1	69	-
21244	-	-	-	25	7	1	65	-
21245	-	-	-	7	14	1	39	-
21246	-	-	-	3	31	1	35	-
21247	-	-	-	3	23	1	29	-
21248	-	-	-	1	17	1	39	-
21249	-	-	-	3	23	1	33	-
21250	-	-	-	22	10	1	55	-

One assay ton portion used for Au Pt Pd.

Certified by G. Leblond

2. 223 62

**Geochemical Analysis Certificate**

0W-2311-RG1

Company: **STARFIRE MINERALS INC**  
Project: **SM-00-2**  
Attn: **M. Caron**

Date: JUL-24-00

We hereby certify the following Geochemical Analysis of 48 CORE samples submitted JUL-19-00 by .

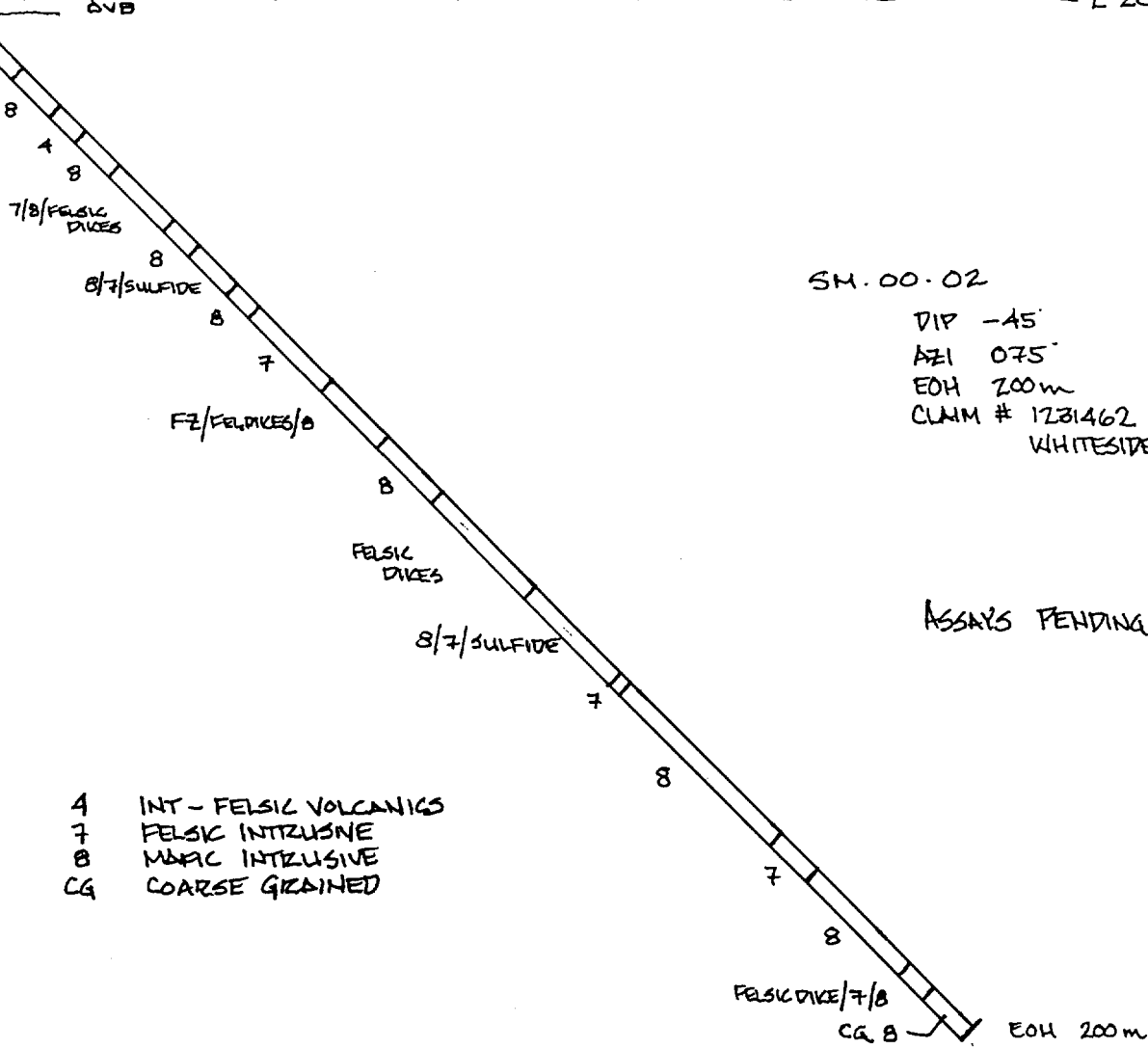
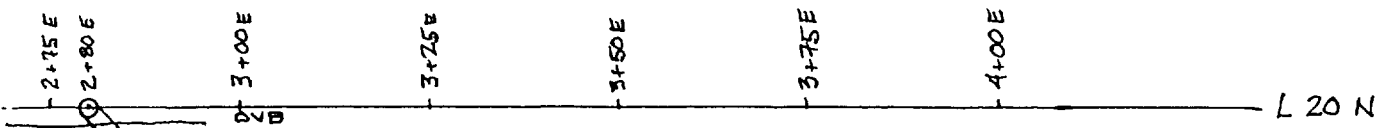
SM-00-02  
SM-00-03

Sample Number	Au Au Check	Ag	Cu	Ni	Pb	Zn	Pt	Pd
	PPB	PPB	PPM	PPM	PPM	PPM	PPB	PPB
21251	-	-	6	48	1	42	-	-
21252	-	-	3	50	1	30	-	-
21253	-	-	244	-	1	146	-	-
21254	-	-	288	-	1	136	-	-
21255	-	-	16	-	1	23	-	-
21256	9	-	258	-	1	70	-	-
21257	94	93	9	-	1	19	-	-
21258	-	-	124	-	11	147	-	-
21259	-	-	87	-	1	118	-	-
21260	-	-	275	-	1	98	-	-
21261	-	-	70	-	1	96	-	-
21262	-	-	25	-	1	45	-	-
21263	-	-	373	194	1	48	-	-
21264	-	-	113	159	2	48	-	-
21265	-	-	372	257	1	42	<5	<5
21266	-	-	150	-	1	41	-	-
21267	-	-	189	-	1	68	-	-
21268	-	-	102	-	1	56	-	-

One assay ton portion used for Au Pt Pd.

Certified by 

2 . 223 6 2



SM.00.02

DIP -45°  
AZI 075°  
EOH 200m  
CLAIM # 1231462  
WHITESIDES TWP.

ASSAYS PENDING

- 4 INT - FELSIC VOLCANICS
- 7 FELSIC INTZUSIVE
- 8 MAFIC INTZUSIVE
- CG COARSE GRAINED



VDH SECTION SM.00.02

STARFIRE MINERALS INC.

WHITESIDES PROPERTY JUNE 22, 2000

DRAWN: POLK GEOLOGICAL SERVICES

SCALE: 1:1,000

2. 22332

# DIAMOND DRILL LOG

2. 22362

DRILLING COMPANY		COLLAR ELEVATION		DIP		BEARING		CLAIM NO.		LOCATION		MAP		HOLE NO.		PAGE NO.															
SALO		-		-		-		1231462		L 24 N 0+20 W				SM. 00. 03		1															
START DATE		COMPLETION DATE		DATE LOGGED		COLLAR		MAP NO.		PROPERTY NAME		COMMENTS																			
JUNE 28, 2000		JULY 4, 2000		JULY 20-25		-				WHITESITES		CASING REMAINS NO TESTS																			
EXPLORATION CO.: OWNER: OPTIONEE				LOGGED BY				TOTAL FOOTAGE																							
STARFIRE MINERALS				BKP.IK				68.6m																							
FOOTAGE		ROCK TYPE		DESCRIPTION								PY %		SAMPLE FOOTAGE		SAMPLE LENGTH		ASSAYS													
FROM	TO			COLOUR: GRAIN SIZE: TEXTURE: MINERALS: ALTERATION: ETC.										FROM	TO			Au	Cu	Pb	Zn	Ni	Pt	Pd							
0	3.0m	DVB		GRANITIC COBBLE @ EDINT														PPB	PPM	PPM	PPM	PPM	PPM	PPB	PPB						
3.0	4.0m	FELSIC DYKE		L F <sub>4</sub> TO LOCY PORPHYRITIC DYKE, SLIGHTLY ORANGE A ALBITIC, CHLORTIC S LAM'D ALB, CHL ALTN WELL DEFINED @ 40 dtr I LOW L ERAG M TR PY (G BERRY PYRHT)																											
4.0	26.2	MIND ALTD 2 flows		L PALE GREEN-DK GREEN FLOWS LOCY CHLC, LAMINATED FLOWS(?) AT EDINT MINN GENY ASSOC W VERY CHL INT, LOCY HEAVY NET TEXT P <sub>0</sub> A SILT TO 5.8m ASSP W 40cm Felsic dyke, loy porph. ct' @ 45 + 90cm QV min chl tr py LOG QC ALTN(EG) LOG CHL AF THIN FELSIC DIKES AF DIORITE DIKES (LOG CHLN, BROWN ALTH) GRIST TRANSPARENT QV @ 40 dtr NEAR BEST MINN INTENSE CHLV 13.4 - 18.7m M AS DESCRIBED																											
		020																													
				21253 OYDZ FZ (70cm) SILT, QC ALTD, LOCY CHLC 2m 10% SEAMY - BLEBBY CG SUB-EUH PY								Cu, Pb, Zn		10	4.0	5.2			-	244	1	146	-	-	-	-					
				21254 " " " 2cm QV W CHL (LOW L MIN. ALTN)										10	5.2	6.6			-	288	1	136	-	-	-	-					
				21255 CONTR ALTN, QTZ, CHL ASSP W 50cm BROWN QEP DYKE										-	6.6	7.5			-	16	1	23	-	-	-	-					
				21256 HIGHLY ALTD (CHL, QC SIL, PY) BETWEEN EP QV								+ Au		15	7.5	7.7			9	258	1	30	-	-	-	-					
				21257 BULWISH WHITE QV MIN CHL, SER, PY (GRB)										1	7.7	8.5			94	9	1	19	-	-	-	-					
				21258 PY MIN IN SILT, ALBITE, CHL ALTN, 10% PATCHY DISS MG EUH PY (Cu Pb Z)										10	8.5	8.8			-	124	11	147	-	-	-	-					
				21259 LESSER ALTN FZ BY FELSIC DYKE LAST 15cm THIN SLEAK										TR	8.8	10.2			-	87	1	118	-	-	-	-					
				21260 SER, CHL, QC ALTD 2 (MUDY) 1/2 CG EPH DB D <sub>0</sub> (OXD/20cm)										1	10.2	11.5			-	275	1	98	-	-	-	-					
				21261 LOCY BLCD, BRECCIATED(?) DISSD PY tr										TR	11.5	12.4			-	30	1	96	-	-	-	-					
				21262 DIORITE DYKE / CHL FIELDS										-	12.4	12.9			-	25	1	45	-	-	-	-					
				21263 BLCH ALTD CHLC 2 W 10% DISS NET TEXT P <sub>0</sub> (VFG) + PY (P <sub>0</sub> /P <sub>1</sub> 70/80)								Cu, Pb, Zn, Ni		10	12.9	13.4			-	373	1	48	194	-	-	-					
				21264 V CHLC, LAMD (LOCY) 2F										tr	13.4	14.5			-	113	2	48	159	-	-	-					
				21265 HIGHLY CHLD 2m NUM INT' OF 10-20% VFG DISS - NET TEXT P <sub>0</sub> tr (PY)								Cu Pb Zn Ni PGE		10	14.5	16.8			-	357	1	42	257	45	45						
				21266 FELSIC DYKE (DMMY QC PORPH, GREY) 50dtr								Cu Pb Zn		-	16.0	16.4			-	150	1	41	-	-	-						



# DIAMOND DRILL LOG

# 2 22362

DRILLING COMPANY		COLLAR ELEVATION	@	DIP	BEARING	@	DIP	BEARING	CLAIM NO.	LOCATION	MAP	HOLE NO.	PAGE NO.								
START DATE	COMPLETION DATE	DATE LOGGED	COLLAR	°	°	m	°	°	MAP NO.	PROPERTY NAME		SM.00.03	2								
EXPLORATION CO.; OWNER; OPTIONEE	LOGGED BY		m	°	°	m	°	°	TOTAL FOOTAGE			COMMENTS									
			m	°	°	m	°	°													
FOOTAGE FROM	TO	ROCK TYPE	DESCRIPTION COLOUR; GRAIN SIZE; TEXTURE; MINERALS; ALTERATION; ETC.							PY %	SAMPLE FOOTAGE FROM	TO	SAMPLE LENGTH	ASSAYS							
														Ag	Cu	Pb	Zn	Ni	Fe	Pa	
			21267																		
			21268																		
			18.7-23.4																		
			21269																		
			21270																		
26.2	35.6	8																			
35.6	37.2	2m 7																			
37.2	41.0	2m (ALTD)																			



FOOTAGE		ROCK TYPE	DESCRIPTION COLOUR; GRAIN SIZE; TEXTURE; MINERALS; ALTERATION; ETC.	PY %	SAMPLE FOOTAGE		SAMPLE LENGTH	ASSAYS		
FROM	TO				FROM	TO				
			TR PY/CPY LOGY							
			21271 ABUN QC, PINK/BROWN ALTN, LOC BRECCIATION OF QC VALLECK CuPbZn: Au IN QC VN TR-1% PY+CPY, CB, SEAMY	1	37.2	38.1				
			21272 NUM MAFIC (PORPHYRITIC) DIKELETS BROWN, ALBITE(?) TR PY/CPY "	TR	30.1	39.0				
41.0	49.9	2m	PALE GREEN FG 2m GRADES INTO GREY 2m PERHAPS THIN FLOWS LOC PORPHYRITIC (8 DIKELETS)							
			WEAK PER SILN (FELSIC DIKE 44.2-45.4m), LOCY MOD ABUN QC ALTN, FLOODING, ST LOC CHL LOC OXDN ASSD W THIN FRAC Z' Soil IRREG @ 45 dtr, SHALLOWS TO 10 dtr, returns to 45 dtr QC ST CASSP @ 45 rot 90							
			BB Py TO 5% IN LOWL AREA, ASSD W QC ALTN - NO SAMPLE							
49.9	55.6	8	GREY, M-CG, LOCY PORPHC 8 W NUM // QV  GENY SILN QC ST' W ASSD BLCHG LOCY ABUN BROWN/PINK ALTN MIN EPI CHLN  Soil PORD @ 40 dtr ST @ 45 dtr rot 90  seamy po+tr py to 2%, often frac filling							
			21273 LOC SEAMY FRAC FILL PO + 1% DISSD PO LOGY, ABUN SILN CuPbZn: Au	1	52.0	53.5				
			21274 " " " "	1	53.5	55.0				
55.6	59.5	8ALTD	GENY ALTD CG 8 W ABUN SILN, FRACG, OXDN  ALTN STRONG ... PER SILN LOC OXDN, CHLN QC ST' PINK/BROWN ALTN IN PATCHES  Soil VARIABLE NUM ALTD FRAC', FRAC ZONES							

2. 22362

HOLE No. SM-00-03 PAGE No. 4

FOOTAGE		ROCK TYPE	DESCRIPTION <small>COLOUR; GRAIN SIZE; TEXTURE; MINERALS; ALTERATION; ETC.</small>	PY %	SAMPLE FOOTAGE		SAMPLE LENGTH	ASSAYS		
FROM	TO				FROM	TO				
			TR GPY IN VUGGY ST							
			21275 ALT D B (OX B+2) tr cpy + po in oxd. st	Cu Pb Zn	fr	55.6	57.1			
			21276 LOW L Sil, BROWN SILN "	"	fr	57.1	58.6			
59.5	68.6	8	BLACK, LAYERED B INT, LOCY PORPHY							
			LOCY CHL							
			QCX 62.1 - 62.5m							
			LOCY ABUN QC ST							
			MIN BROWN/PINK PATCHES							
			TR CRY + PO LOCY							
			21277 LOT OF QCX BLACK SILLS @ TR SPHAL IN QCXNLT	Cu Pb Zn Ni	TR	62.5	64.0			
			TR CP IN ALT D Z (CHL, QC)	"						
			21278 CG B, TR Pa + GPY	"	TR	64.0	65.5			
			21279 EOH SAMPLE CG B TR Po ASSD TO QC ALTN	"	TR	67.1	68.6			
68.6		EOH								

JUNE 28 00

SM-00-03  
AZI 75° (|| TO LINE)  
DIP -45°  
LENGTH 70m

1E 0+00

MALETTE RD.  
3.6 km.

SM-00-01

TRENCH

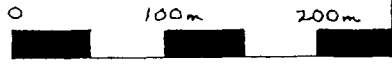
ML-96-01

MASSEY TWP.  
WHITESIDES TWP.

SM-00-02

LARRY - IF POSSIBLE COULD YOU PLEASE MUCK  
OUT THE TRENCH WHILE THE SHOVEL IS  
IN THE AREA  
THANKS BIZIAN

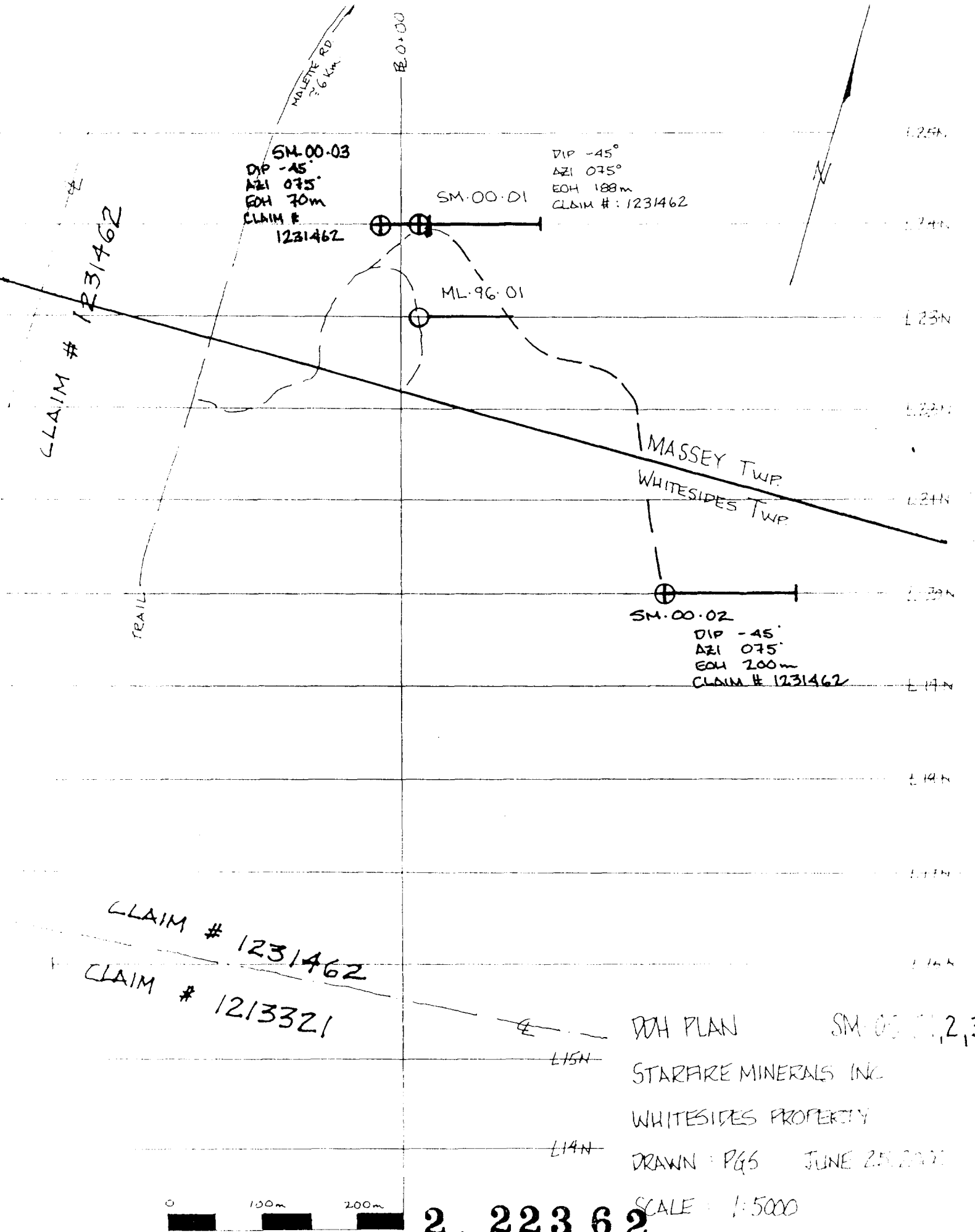
TRAIL

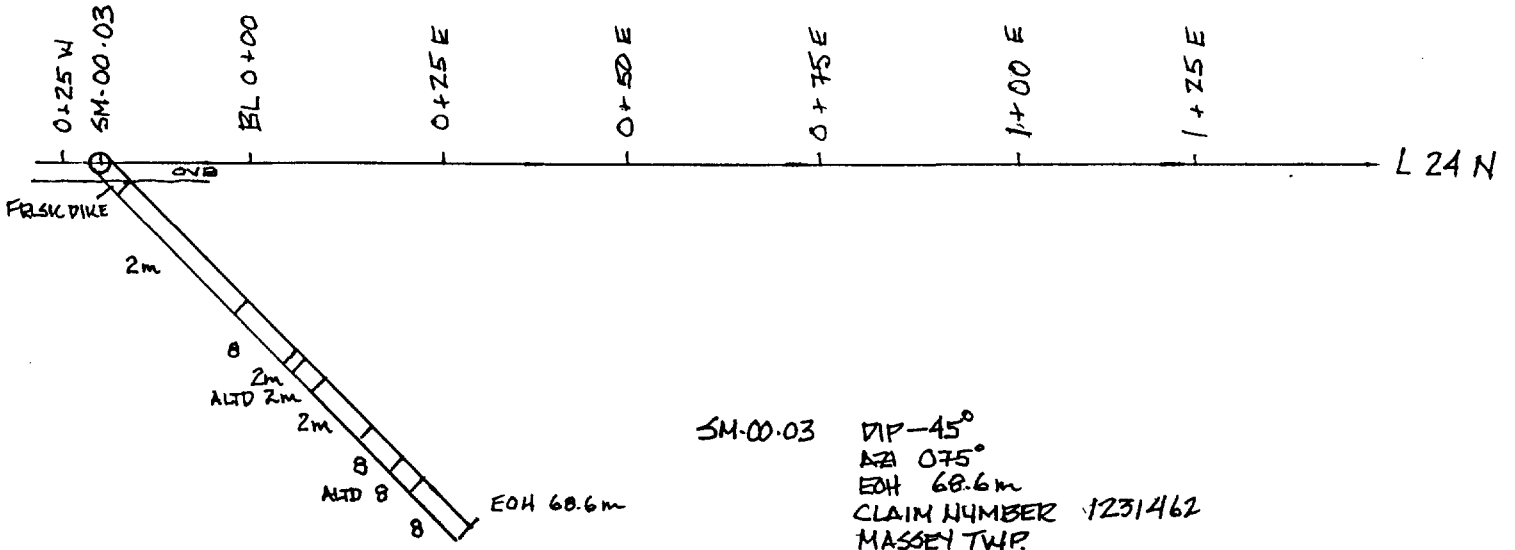


PPH PLAN SM-00-01  
STARFIRE MINERALS INC.  
WHITESIDES PROPERTY  
DRAWN: PGS JUNE 25, 2000

SCALE: 1:5000

2 223 62





SM-00.03  
 DIP -45°  
 AZ 075°  
 EOH 68.6m  
 CLAIM NUMBER 1231462  
 MASSEY TWP.

ASSAYS PENDING

Zm MAFIC VOLCANICS (MASSIVE)  
 8 MAFIC INTUSIVE

WH SECTION SM-00-03  
 STARFIRE MINERALS INC.  
 WHITESIDES PROPERTY JUNE 22, 2000  
 DRAWN: POLK GEOLOGICAL SERVICES  
 SCALE: 1:1,000

2. 22362



Established 1928

# Swastika Laboratories Ltd

Assaying - Consulting - Representation

Page 2 of 2

0W-2311-RG1

Date: JUL-24-00

## Geochemical Analysis Certificate

Company: **STARFIRE MINERALS INC**  
Project: **SM-00-2**  
Attn: **M. Caron**

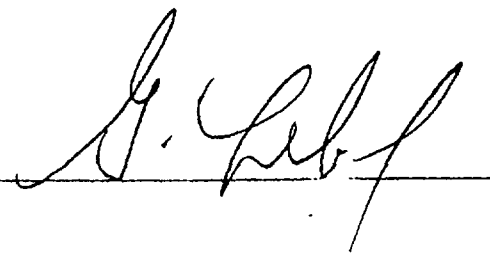
We hereby certify the following Geochemical Analysis of 48 CORE samples submitted JUL-19-00 by .

SM-00-02  
↑  
SM-00-03  
↓

Sample Number	Au PPB	Au Check PPB	Ag PPM	Cu PPM	Ni PPM	Pb PPM	Zn PPM	Pt PPB	Pd PPB
21251	-	-	-	6	48	1	42	-	-
21252	-	-	-	3	50	1	30	-	-
21253	-	-	-	244	-	1	146	-	-
21254	-	-	-	288	-	1	136	-	-
21255	-	-	-	16	-	1	23	-	-
21256	9	-	-	258	-	1	70	-	-
21257	94	93	-	9	-	1	19	-	-
21258	-	-	-	124	-	11	147	-	-
21259	-	-	-	87	-	1	118	-	-
21260	-	-	-	275	-	1	98	-	-
21261	-	-	-	70	-	1	96	-	-
21262	-	-	-	25	-	1	45	-	-
21263	-	-	-	373	194	1	48	-	-
21264	-	-	-	113	159	2	48	-	-
21265	-	-	-	372	257	1	42	<5	<5
21266	-	-	-	150	-	1	41	-	-
21267	-	-	-	189	-	1	68	-	-
21268	-	-	-	102	-	1	56	-	-

21253 62

One assay ton portion used for Au Pt Pd.

Certified by 

1 Cameron Ave., P.O. Box 10, Swastika, Ontario P0K 1T0  
Telephone (705) 642-3244 Fax (705) 642-3300



Date: 2001-DEC-19

GEOSCIENCE ASSESSMENT OFFICE  
933 RAMSEY LAKE ROAD, 6th FLOOR  
SUDBURY, ONTARIO  
P3E 6B5

DOUGLAS JOSEPH LALONDE  
53 WAY AVENUE  
TIMMINS, ONTARIO  
P4N 3C4 CANADA

Tel: (888) 415-9845  
Fax: (877) 670-1555

**Submission Number:** 2.22362  
**Transaction Number(s):** W0160.31034

Dear Sir or Madam

**Subject: Approval of Assessment Work**

We have approved your Assessment Work Submission with the above noted Transaction Number(s). The attached Work Report Summary indicates the results of the approval.

At the discretion of the Ministry, the assessment work performed on the mining lands noted in this work report may be subject to inspection and/or investigation at any time.

If you have any question regarding this correspondence, please contact LUCILLE JEROME by email at [lucille.jerome@ndm.gov.on.ca](mailto:lucille.jerome@ndm.gov.on.ca) or by phone at (705) 670-5858.

Yours Sincerely,



Ron Gashinski  
Supervisor, Geoscience Assessment Office

**Cc:** Resident Geologist

Douglas Joseph Lalonde  
(Claim Holder)

Assessment File Library

Douglas Joseph Lalonde  
(Assessment Office)







MINING LAND TENURE MAP

Date / Time of Issue Dec 19 2001 11:18h Eastern  
TOWNSHIP / AREA PLAN  
MASSEY M-0296

ADMINISTRATIVE DISTRICTS / DIVISIONS  
Mining Division Porcupine  
Land Titles/Registry Division COCHRANE  
Ministry of Natural Resources District TIMMINS

TOPOGRAPHIC

- Administrative Boundaries
Township
Cadastral Lot
Municipal Lot
City/Parish Lot
County
Controlled Access (Asphalt Paved)
Road
Watercourse
Watercourse (Asphalt Paved)
Watercourse (Gravel)
Watercourse (Dirt)
Watercourse (Grass)
Watercourse (Mud)
Watercourse (Sand)
Watercourse (Silt)
Watercourse (Stone)
Watercourse (Wood)
Watercourse (Other)

LAND TENURE

- Traditional Patent
Surface Mining Rights
Surface Rights Only
Mineral Rights Only
Subsided Patent
Surface Mining Rights
Surface Rights Only
Mining Rights Only
License of Occupation
Surface of Land
Surface and Mining Rights
Surface Rights Only
Mineral Rights Only
Land Use Easement
Drainage Easement
Water Right Lease Agreement

LAND TENURE WITHDRAWALS

- 1234567890 Mining Claim
1234567890 Mining Claim
1234567890 Mining Claim
1234567890 Mining Claim
1234567890 Mining Claim
1234567890 Mining Claim
1234567890 Mining Claim
1234567890 Mining Claim
1234567890 Mining Claim
1234567890 Mining Claim

IMPORTANT NOTICES

No



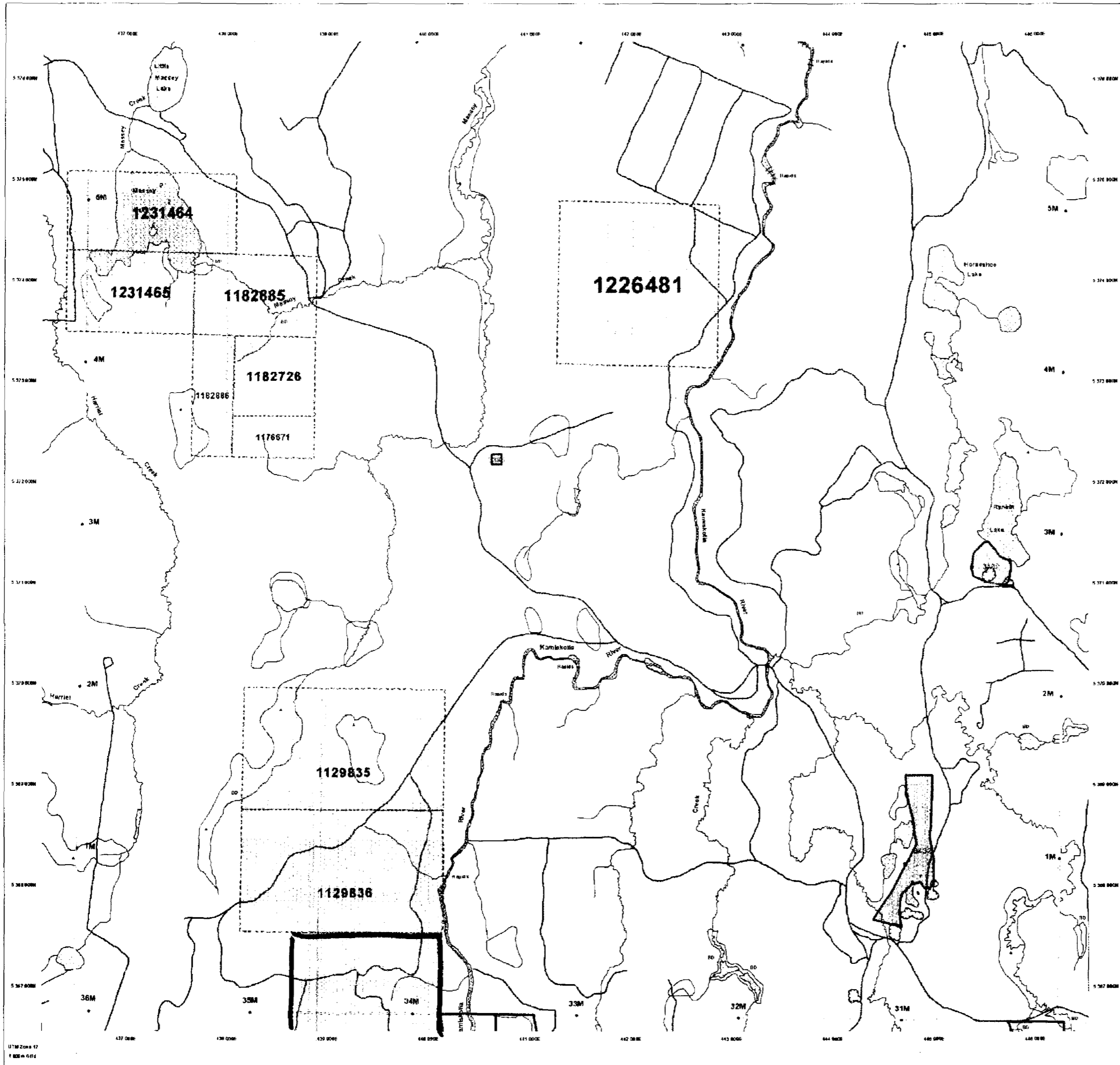
LAND TENURE WITHDRAWAL DESCRIPTIONS

Table with columns: Number, Type, Date, Description. Includes entries for surface rights reservation and pending applications.

IMPORTANT NOTICES

Areas under which special regulations, conditions or conditions exist that affect normal processing, mining and related development activities.

2.22362 PDRILL ASSAY



42A05NW2010 2-22362 MASSEY 210

These mining claims were created with the Provincial Mining Recorder's Office of the Ministry of Northern Development and Mines for information purposes only. They do not constitute a guarantee of any kind. The Province of Ontario is not responsible for any errors or omissions in this map. The Province of Ontario is not responsible for any errors or omissions in this map. The Province of Ontario is not responsible for any errors or omissions in this map.

General Information and Limitations
Contact Information: Provincial Mining Recorder's Office, 1st Floor, 1000 Queen Street West, Toronto, Ontario M5G 1S2. Phone: (416) 325-2600. Fax: (416) 325-2601. Website: www.mnr.gov.on.ca/mining

This map may not show an up-to-date view of the land including certain parcels, leases, agreements, rights of way, easements, etc. It is not a guarantee of any kind. The Province of Ontario is not responsible for any errors or omissions in this map. The Province of Ontario is not responsible for any errors or omissions in this map. The Province of Ontario is not responsible for any errors or omissions in this map.



**REFERENCES**

DRAWN FROM DISPOSITION

MINING RIGHTS ONLY  
 SURFACE RIGHTS ONLY  
 MINING AND SURFACE RIGHTS

No.	Date	Disposition	File
1		S.R.O.	171508
2		M.R.O.	
3	FEB 3/88	M. & S.R.	171508
4	28/71	M. & S.R.	171508

MINING RIGHTS WITHDRAWN FROM  
 SALE OR LEASE  
 UNDER THE MINING ACT, R.S.O. 1990  
 CHAPTER 289, SECTION 11, MAY 02

1577/89 ONT MAY 10/89 M&S

220

MASSEY

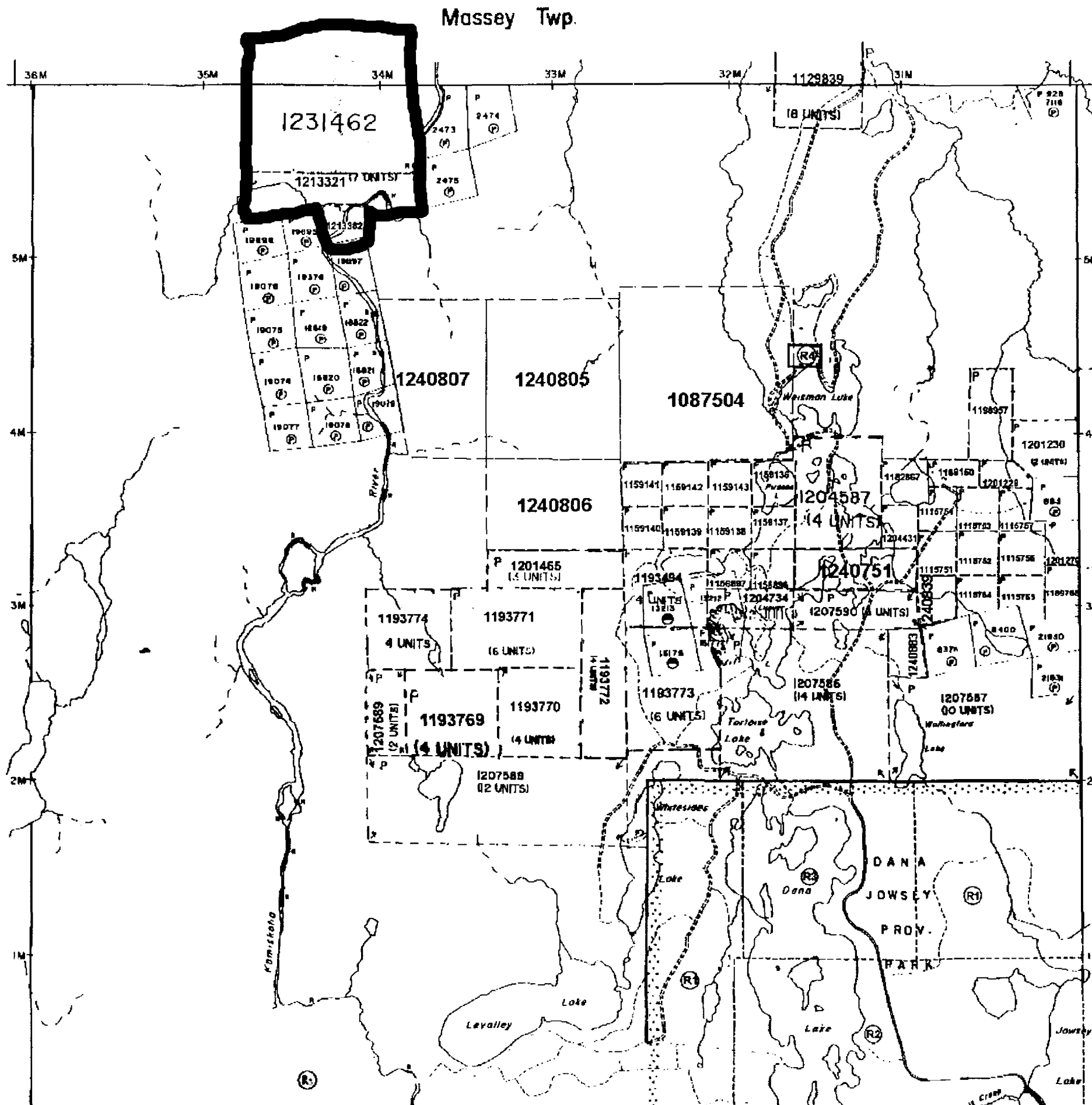
2-22362

42A05NW2010



INFORMATION THAT  
 ON THIS MAP  
 HAS BEEN COMPILED  
 FROM VARIOUS SOURCES.  
 ACCURACY IS NOT

Frey Twp.



Massey Twp.

Carleton Twp.

**LEGEND**

HIGHWAY AND ROUTE No.	
OTHER ROADS	
TRAILS	
SURVEYED LINES	
TOWNSHIPS, BASE LINES, ETC.	
LOTS, MINING CLAIMS, PARCELS, ETC.	
UNSURVEYED LINES	
LOT LINES	
PARCEL BOUNDARY	
MINING CLAIMS ETC.	
RAILWAY AND RIGHT OF WAY	
UTILITY LINES	
NON-PERENNIAL STREAM	
FLOODING OR FLOODING RIGHTS	
SUBDIVISION OR COMPOSITE PLAN	
RESERVATIONS	
ORIGINAL SHORELINE	
MARSH OR MUSKEG	
MINES	
TRAVERSE MONUMENT	

**DISPOSITION OF CROWN LANDS**

TYPE OF DOCUMENT	SYMBOL
PATENT SURFACE & MINING RIGHTS	
" SURFACE RIGHTS ONLY	
" MINING RIGHTS ONLY	
LEASE, SURFACE & MINING RIGHTS	
" SURFACE RIGHTS ONLY	
" MINING RIGHTS ONLY	
LICENCE OF OCCUPATION	
ORDER-IN-COUNCIL	
RESERVATION	
CANCELLED	
SAND & GRAVEL	
LAND USE PERMITS FOR COMMERCIAL TOURISM, OLTPOST CAMPS	

SCALE 1 INCH = 40 CHAINS



TOWNSHIP 22 N 5 W

**WHITESIDES**

M.N.R. ADMINISTRATIVE DISTRICT

TIMMINS

MINING DIVISION

PORCUPINE

LAND TITLES / REGISTRY DIVISION

COCHRANE