



42A05NW8519 10 WHITESIDES

010

Diamond Drilling

Township of WHITESIDES

Report NO 10

Work performed by: Hollinger Mines

Claim NO	Hole NO	Footage	Date	Note
P 38956	W-1	25.0'	Apr/55	
	W-2	59.0'	Apr/55	
	W-3	26.0'	Apr/55	
	W-4	48.0'	Apr.55	
	W-5	58.0'	May/55	
	W-6	84.0'	Jan/56	
	W-7	64.0'	Jan/56	
	1-56	552.0'	Sept/56	
	2-56	430.0'	Sept/56	
	3-56	700.0'	Oct/56	
	<u>16</u>	<u>2046.</u>		

Notes:

East 346' from #4 Post of P 38956
 South 170'

File
 38956

HOLE No. **W1**
 COMMENCED *April 20/55*
 FINISHED **April 22, 1955**
 PURPOSE OF HOLE
To test a mineralized outcrop.

NORTH
 EAST
 ELEV. **N 86° W (Ast).**
 AZIM **- 40°**
 DIP

DIAMOND DRILL REPORT

Property **CLAIM P 38956**
 WHITESIDES TWP., Ont.

Length 25 feet.

FROM	TO	DESCRIPTION	CORE SAMPLES					DESCRIPTION OF SAMPLE Mineralization
			FROM	TO	RECOV. Width	WIDTH	ASSAY	
0' 0"	25' 0"	GABERO, medium grain, core badly broken up. Rusty	0' 0"	2' 6"	2.5			No lm
		leached vugs and slips. Occasional greenstone	2' 6"	5' 0"	2.5			No lm
		inclusion as @ 2'0" - 2'6", 6'0"-6'6" and @ 9'6"	5' 0"	7' 6"	2.5			No lm
		Some scattered disseminated pyrite and chalcoc.	7' 6"	10' 0"	2.5			1-1" Str. lm
END OF HOLE @ 25'0"			10' 0"	12' 6"	2.5			No lm
			12' 6"	15' 0"	2.5			No lm
		FROM TO RECOVERY	15' 0"	20' 0"	5.0			No lm
		0' 0" 5' 0" 3' 2"	20' 0"	22' 6"	2.5			No lm
		5' 0" 10' 0" 3' 7"	22' 6"	25' 0"	2.5			No lm
		10' 0" 15' 0" 3' 9"						
		15' 0" 20' 0" 2' 2"						
		20' 0" 25' 0" 3' 7"						
		% CORE RECOVERY = 66.8%						

W. H. Hansen
April 24/55

NORTH
EAST
ELEV.
AZIM S 61° W Ast.
DIP = 44°

DIAMOND DRILL REPORT

COMMENCED April 19th, 1955
FINISHED April 21st, 1955
PURPOSE OF Deepened May 6, 1955
HOLE To test a mineralized outcrop.

Property CLAIM P 38956

WHITESIDES TWP., Ont.

Length 59' 0"

FROM	TO	DESCRIPTION	CORE SAMPLES					DESCRIPTION OF SAMPLE	
			FROM	TO	RECOV. Width	WIDTH	ASSAY	% Qtz.	Mineral
0' 0"	25' 0"	GABBRO	0' 0"	2' 6"	2.5			No	lm (pyrrhotite & Pyrite)
		0' 0" - 10' 0" gray, rusty badly broken up, slips @ 30° and parallel to axis of core. Dissem. mineral mostly pyrrhotite with trace of chalco. and pyrite. Some brownish streaks which might be sphalerite.	2' 6"	5' 0"	2.5			No	lm
			5' 0"	7' 6"	2.5			No	lm
			7' 6"	10' 0"	2.5			No	lm
			10' 0"	13' 0"	3.0			No	lm
			13' 0"	14' 6"	1.5			No	fm
		10' 0" - 20' 0" greenish, less leaching by surface waters, some brownish streaks (sphalerite?)	14' 6"	15' 6"	1.0			No	fm (6" mass. sulphides)
			15' 6"	17' 6"	2.0			No	lm
			17' 6"	19' 0"	1.5			No	lm
			19' 0"	20' 0"	1.0			No	fm (1" semi-mass. sulph.)
			20' 0"	21' 0"	1.0			60% blue	lm
		20' 0" - 23' 0" Blue quartz vein embracing a replacement vein of massive sulphides. Qtz. vein resembles a healed breccia, fragments up to 3/4". 21' 0" - 22' 0" massive sulphides practically all pyrrhotite.	21' 0"	22' 0"	1.0			10% blue	Wm (10" mass. sulphides)
			22' 0"	23' 0"	1.0			Silic'd	fm semi-mass. streaks
			23' 0"	25' 0"	2.0			No	Wm (fm chalco @ 23' 0" mass. sulphides)
			25' 0"	26' 6"	1.5			No	Wm (60% pyrrhotite mass. sulphides)
			26' 6"	28' 0"	1.5			No	Wm (dissem. pyrrhotite)
		23' 0" - 25' 0" massive sulphides (pyrrhotite) fm chalco in one piece @ 23' 0" (2 inches)	28' 0"	30' 6"	2.5			No	lm
			30' 6"	32' 6"	2.5			No	lm
			32' 6"	35' 0"	2.5			No	Wm (pyrrh. str.)
25' 0"	28' 0"	25' 0"-28' 0" Greenstone, medium grain containing str. of massive sulphides (pyrrhotite)	35' 0"	37' 0"	2.0			No	Wm (pyrrh. str.)
			37' 0"	38' 6"	1.5			No	lm
			38' 6"	40' 0"	1.5			1-2"	Qtz. str. fm pyrite
28' 0"	30' 0"	28' 0"-30' 0" Gabbro - gray blotchy medium grain.	40' 0"	42' 6"	2.5			No	lm
			42' 6"	45' 0"	2.5			No	lm
30' 0"	33' 0"	Greenstone - medium grain, sl. schistose.	45' 0"	46' 6"	1.5			Lost Core	

NORTH
 EAST
 ELEV.
 AZIM
 DIP

DIAMOND DRILL REPORT

Property CLAIM P 38956
WHITESIDES TWP., Ont.

HOLE No. **W 2 (Cont'd)**

COMMENCED
 FINISHED
 PURPOSE OF HOLE

FROM	TO	DESCRIPTION	CORE SAMPLES					DESCRIPTION OF SAMPLE
			FROM	TO	RECOV.	WIDTH	ASSAY	
33' 0"	35' 6"	Gabbro	45' 6"	49'	2' 6"			Few tiny Qtz. str. very little dissem.
35' 6"	36' 0"	Greenstone	49'	51' 6"	2' 6"			pyrite & pyrrhotite
36' 0"	42' 0"	Gabbro - quite coarse grain 1-2" Qtz. str. containing coarse pyrite @ 39' 6".	51' 6"	54'	2' 6"			" " " " " " "
42' 0"	45' 0"	Felsite dyke, light gray fine to med. grain, sharp contact @ 42' 0". A little scattered disseminated pyrite.	54'	56' 6"	2' 6"			" " " " " " "
45' 0"	46' 6"	Piece of Core left in hole.						
46' 6"	59'	Grey, medium to fine grained Felsite dyke. 1/16" grey feldspar phenocrysts in a fine grained matrix of quartz and feldspar. A few 1/4" to 1/2" quartz stringers with very little pyrite and pyrrhotite. A very little fine grained dissem. pyrite and pyrrhotite.						
END OF HOLE @ 59'								
		FROM TO CORE RECOVERY FT. IN.						
		0' 0" 5' 0" 4' 6"						
		5' 0" 10' 0" 4' 8"						
		10' 0" 15' 0" 4' 10"						
		15' 0" 20' 0" 4' 11"						
		20' 0" 25' 0" 5' 0"						
		25' 0" 30' 0" 4' 6"						
		30' 0" 35' 0" 4' 9"						
		35' 0" 40' 0" 4' 10"						
		40' 0" 46' 6" 5' 0"						
		46' 6" 59' 0" 10' 6"						
		TOTAL 53' 6"						
		RECOVERY - 01%						

W. H. Hansen
 21 May 8/55

East 346')
 South 236') from #4 Post of P 38956

DIAMOND DRILL REPORT

HOLE No. **W3**
 COMMENCED **April 21/55**
 FINISHED " **22/55**
 PURPOSE OF HOLE **to test mineralized zone.**

NORTH
 EAST
 ELEV.
 AZIM **N 76° E**
 DIP **- 40°**

Property **CLAIM P 38956**
WHITESIDES TWP., Ont.

Length **27' 26"**

FROM	TO	DESCRIPTION	CORE SAMPLES					DESCRIPTION OF SAMPLE	
			FROM	TO	RECOV. Width	WIDTH	ASSAY	Qty.	Mineral'n (pyrrh.)
0' 0"	5' 0"	Greenstone - medium grain sl. schistose	0' 0"	2' 6"	2.5			No	ln
		0'-5'0" - core badly broken up and leached	2' 6"	5' 0"	2.5			No	ln
5' 0"	20' 0"	Gabbro - medium grain, massive.	5' 0"	7' 6"	2.5			"	"
		5'0" - 6'6" - broken up rusty.	7' 6"	10' 0"	2.5			"	"
20' 0"	26' 0"	Gabbro - coarse grain. occas. speck of pyrrh.	10' 0"	12' 6"	2.5			"	"
END OF HOLE @ 26' 0"			12' 6"	15' 0"	2.5			"	"
			15' 0"	17' 6"	2.5			"	"
CORE RECOVERY			17' 6"	20' 0"	2.5			"	"
		FROM TO FT. IN.	20' 0"	22' 6"	2.5			"	"
		0' 0" 5'0" 5' 0"	22' 6"	26' 0"	3.5			"	"
		5' 0" 10' 0" 4' 10"							
		10' 0" 15' 0" 4' 11"							
		15' 0" 20' 0" 5' 0"							
		20' 0" 26' 0" 5' 0"							
CORE RECOVERY = 95%									
<i>W. H. Hansen</i> <i>April 24/55</i>									

East 344' } from #4 Post of P 38956
South 231' }

HOLE No. W 4

COMMENCED April 26/55

FINISHED April 29/55

PURPOSE OF HOLE To test mineralized zone.

NORTH
EAST
ELEV. S 76° W Ast.
AZIM - 55°
DIP
Length 48'

DIAMOND DRILL REPORT

Property CLAIM P 38956
WHITESIDES TWP., Ont.

FROM	TO	DESCRIPTION	CORE SAMPLES					DESCRIPTION OF SAMPLE
			FROM	TO	RECOV.	WIDTH	ASSAY	
0'	2' 8"	Grey, medium grained gabbro, some narrow streaks of oxidation.	0'	2' 6"	2' 6"			Little disseminated pyrite, pyrrhotite & chalcopyrite
2' 8"	3'	Fine grained dark green greenstone inclusion	5'	7' 6"	2' 6"			1" Qtz. str. little, sulphides
3'	6' 6"	Grey, medium grained gabbro	7' 6"	10'	2' 6"			Little disseminated pyrite, pyrrhotite & chalcopyrite.
6' 6"	10'	Small inclusions of fine grained dark green greenstone in medium grained gabbro.	10'	12' 6"	2' 6"			little dissem. 1" Qtz. str. little, sulphides
10'	25'	Medium grained, slightly sheared, grey green, gabbro a few very narrow inclusions of fine grained greenstone.	15'	17' 6"	2' 6"			Little disseminated pyrite, pyrrhotite & chalcopyrite
			17' 6"	20'	2' 6"			" " " "
			20'	22' 6"	2' 6"			" " " "
25'	37' 6"	Medium grained, medium grey-green, gabbro. Fairly massive with definite ophitic texture. Grey	22' 6"	25'	2' 6"			1" Qtz. str. little, sulphides.
		Feldspar laths up to 1/8" size in a fine grained groundmass of secondary hornblende.	25'	27' 6"	2' 6"			Very little dissem. pyrite & pyrrhotite
			27' 6"	30'	2' 6"			" " " " "
			30'	32' 6"	2' 6"			" " " " "
37' 6"	48'	Medium grained, grey, slightly altered gabbro with definite ophitic texture. Well formed feldspar phenocrysts up to 1/8" in length in a green groundmass of secondary hornblende. Only a very little disseminated pyrite and pyrrhotite.	32' 6"	35'	2' 6"			" " " " "
			35'	37' 6"	2' 6"			" " " " "
			37' 6"	40'	2' 6"			No Qtz. very little dissem. pyrite & pyrrhotite
			40'	42' 6"	2' 6"			" " " " "
			42' 6"	45'	2' 6"			" " " " "
			45'	48'	3'			" " " " "
		END OF HOLE @ 48' 0"						
		NOTE: Average Core Recovery 87%.						

W.A. Jones.
April 30th, 1955.

East 404' } from #4 Post of P 38956
 South 464' }

DIAMOND DRILL REPORT

HOLE No. **W 5**
 COMMENCED **May 2/55**
 FINISHED **May 5/55**
 PURPOSE OF HOLE **To test mineralized zone.**
Logged May 15/55

NORTH
 EAST
 ELEV.
 AZIM **S 76° W** **Art.**
 DIP

Property **CLAIM P 38956**

Length **58 ft.**

WEITESIDES TWP., Ont.

FROM	TO	DESCRIPTION	CORE SAMPLES					DESCRIPTION OF SAMPLE
			FROM	TO	RECOV.	WIDTH	ASSAY	
0	16'	Tale grey-green, slightly altered, coarse textured gabbro. A little disseminated pyrrhotite, pyrite and chalcocyanite.	0'	2' 6"	2' 6"			& chalcocyanite Little dissem. pyrite, pyrrhotite
			2' 6"	5'	2' 6"			" " " "
			5'	7' 6"	2' 6"			" " " "
16'	23' 6"	Dark green, fine grained, uniform textured, greenstone inclusions in gabbro. Some disseminated pyrite and pyrrhotite.	7' 6"	10'	2' 6"			" " " "
			10'	12' 6"	2' 6"			" " " "
			12' 6"	15'	2' 6"			" " " "
23' 6"	45'	Dark green, fairly coarse textured, altered gabbro Grey feldspar in matrix of secondary hornblende. Some fine grained disseminated pyrrhotite.	15'	17' 6"	2' 6"			" " " "
			17' 6"	20'	2' 6"			" " " "
			20'	22' 6"	2' 6"			3" flat quartz str. very little
45' 0"	56' 2"	Dark grey-green, fine grained, greenstone with slight schistosity at 60° to core axis. Occasional streaks and blebs of pyrite and pyrrhotite with a very little chalcocyanite.	22' 6"	25'	2' 6"			1" flat quartz str. very little & chalcocyanite
			25'	27' 6"	2' 6"			Little dissem. pyrite, pyrrhotite
			27' 6"	30'	2' 6"			" " " "
			30'	32' 6"	2' 6"			" " " "
56' 2"	58' 0"	Lost Core	32' 6"	35'	2' 6"			" " " "
END OF HOLE @ 58' 0"			35'	37' 6"	2' 6"			" " " "
		NOTE: 55-58' Core recovered 1' 2"	37' 6"	40'	2' 6"			" " " "
		Average recovery for hole 80%.	40'	42' 6"	2' 6"			" " " "
			42' 6"	45'	2' 6"			" " " "
			45'	47' 6"	2' 6"			" " " "
			47' 6"	50'	2' 6"			" " " "
			50'	52' 6"	2' 6"			" " " "
			52' 6"	55'	2' 6"			" " " "
			55'	58'	3'			" " " "

W. A. Jones.
May 15/55

NORTH South 490'
 EAST East 360'
 ELEV.
 AZIM East
 DIP 34

DIAMOND DRILL REPORT

COMMENCED January 16, 1956
 FINISHED January 24, 1956
 PURPOSE OF HOLE

Property CLAIM P-38956

Length 84 feet

Whitesides Twp. Ont.

Logged by S. N. Scott Jan. 25/56.

FROM	TO	DESCRIPTION	CORE SAMPLES					DESCRIPTION OF SAMPLE
			FROM	TO	RECOV.	WIDTH	ASSAY	
0	38.5	Med. grayish green med. grained gabbroic type. Fairly massive but rather non-uniform in texture	0	38.5	36.1			
		Mod. altered. very irregular feldspar outlines	6	7	.8			Fairly mass. pyrrhot. pyrite some.
		Dissem. sulphides. (predom. pyrrhotite) 0' - 2'	34.5	37.5	2.6			20% streaks mass. pyrrh. chalco v.l.
		2' - 2.5' f. massive pyrr. pyrite	37.5	40	1.3			40% streaks mass. Pyrrh. pyrite
		6' - 7' " " "						
38.5	82.5	Gradational to V. massive pyrrh. pyrite with 5-10% irregular quartz, very little. chalco.	38.6	60	21.1			
			40	42.5	2.4			Mass. pyrr. pyrite - some chalco v.l.
82.5	84.0	Core left in Hole (Could not be recovered)	42.5	45.	2.5			Mass. Pyrr, pyrite, some chalco v.l.
			45.	47.5	2.4			Mass. pyrr, pyrite f.w. chalco v.l.
			47.5	50	2.4			Mass. pyrr, pyrite f.w. chalco v.l.
			50.	52.5	2.5			Mass. pyrr, pyrite little chalco v.l.
			52.5	55.	2.4			Mass. pyrr, pyrite little chalco v.l.
			55.	57.5	2.4			Mass. pyrr, pyrite little chalco. v.l.
			57.5	60.	2.4			Mass. pyrr, pyrite little chalco v.l.

NORTH
EAST
ELEV.
AZIM
DIP

DIAMOND DRILL REPORT

Property Claim **P - 38956**
Whitesides Twp., Ont.

HOLE No. **W 6 (Con't)**

COMMENCED
FINISHED
PURPOSE OF
HOLE

Logged **S.N. Scott** Feb. **13** /56

FROM	TO	DESCRIPTION	CORE SAMPLES					DESCRIPTION OF SAMPLE
			FROM	TO	RECOV.	WIDTH	ASSAY	
			60	62.5	2.4			Mass. pyrr; pyrite little chalco v.l.
			62.5	65.0	2.5			Mass. pyrr, pyrite little chalco v.l.
			65.0	67.5	2.5			20% grey qtz. some mass pyrr, pyrite little, chalco v.l.
			67.5	70.0	2.4			20% grey qtz. some, mass. pyrr, pyrite little, chalco v.l.
			70.0	72.5	2.3			15% grey qtz. some mass. pyrr., pyrite, chalco v.l.
			72.5	75.0	2.5			Mass. pyrr, pyrite little, chalco v.l.
			75.0	77.5	2.4			30% grey qtz. some mass. pyrr. pyrite, chalco v.l.
			77.5	80.0	2.4			20% grey qtz. some, mass. pyrr. & pyrite chalco v.l.
			80.0	82.5	2.4			20% grey qtz, little mass. pyrr, & pyrite chalco v.l.

S.N. Scott
Feb. 13 /56

Location No #4 Post
Claim No. P-38956

CENTRAL WHITESIDES GROUP

HOLE No. **W7**

NORTH South 513'
EAST East 381'
ELEV.
AZIM
DIP Dip 40°
Length - 64'

DIAMOND DRILL REPORT

Property Claim P-38956
Whitesides Twp., Ont

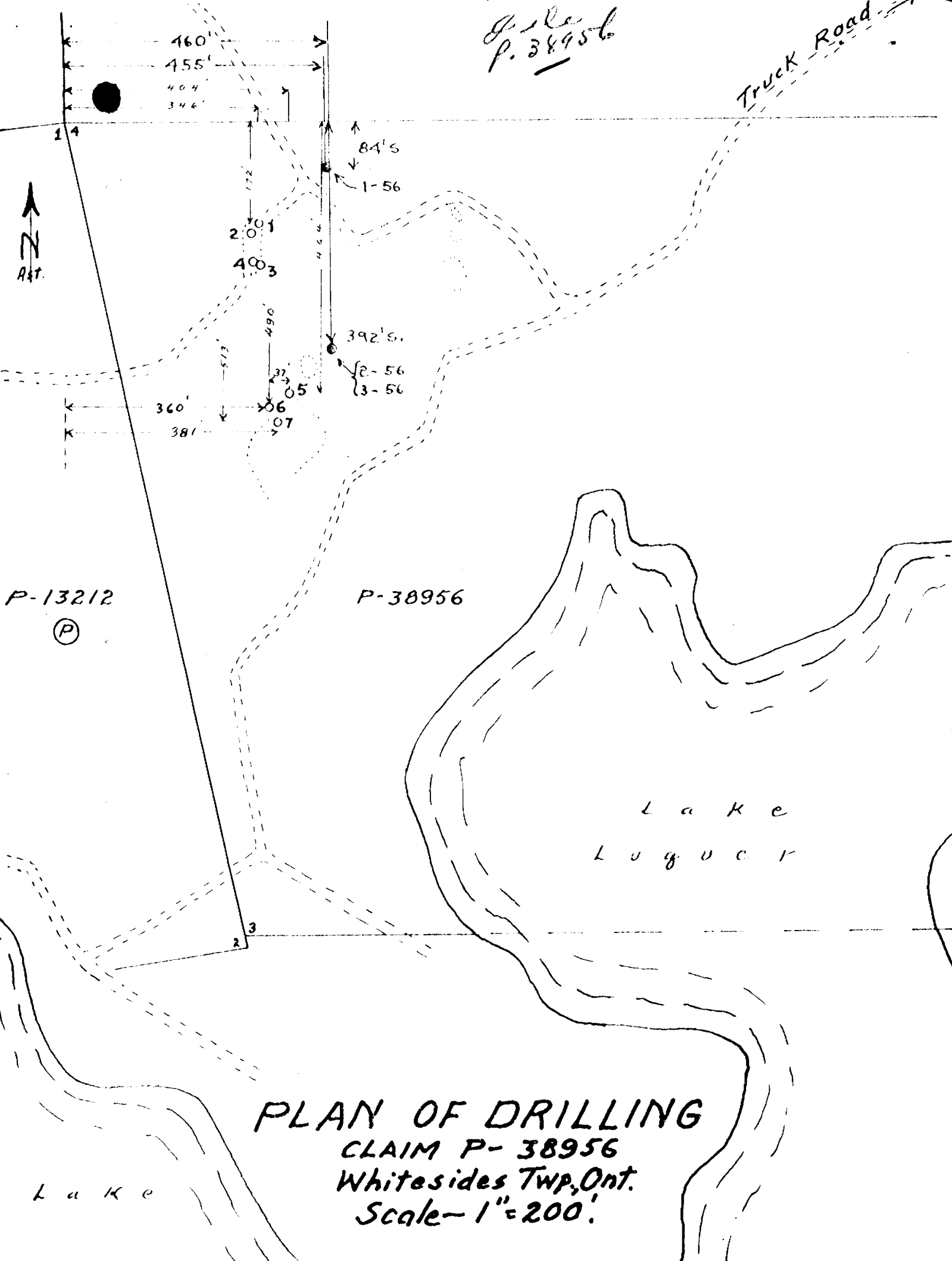
COMMENCED Jan. 25/56
FINISHED Feb. 3/56
PURPOSE OF HOLE
Location P. 38956 Feb. 13/56

FROM	TO	DESCRIPTION	CORE SAMPLES					DESCRIPTION OF SAMPLE
			FROM	TO	RECOV.	WIDTH	ASSAY	
0	64	Med. grayish green med. grained gabbro type.	0	64	64.5			
		Fairly massive but non-uniform in texture -	17.6	18.6	.9			Semi massive pyr., pyrite chalc v1
		in places quite fine - very	34	36	2.9			Semi massive pyr., pyrite chalc v1
		irregular feldspar outlines						
		17.6 - 18.6 F. massive pyrrhotite	38	40	2.9			Mass. pyr. pyrite chalc v1
		34 - 36', 38 - 40 F. massive pyrrhotite.						

L. M. Scott
Feb-13/56

*G. Le
P. 38956*

Truck Road



PLAN OF DRILLING
CLAIM P-38956
 Whitesides Twp, Ont.
 Scale - 1" = 200'

NORTH 84' S Ast From #4 Post P38956
 EAST 455' E Ast From #4 Post P38956
 ELEV. 258° Ast.
 AZIM -50°
 DIP L - 550'
 Dip at 300'-47°; at 550'-51°30'

DIAMOND DRILL REPORT

Property CENTRAL WHITESIDES TWP.
 (Claim #P38956)

File p. 38436

HOLE No. 1-56
 COMMENCED September 22nd, 1956
 FINISHED September 26th, 1956
 PURPOSE OF HOLE

Logged by H. Michie Sept. 25/56. 0-428'

FROM	TO	DESCRIPTION (corrected dips)	CORE SAMPLES					DESCRIPTION OF SAMPLE
			FROM	TO	RECOV.	WIDTH	ASSAY	
0	22'	CASING - gravel & sand						
22'	50	Med. green fine grained pillow lava containing numerous irregular tiny qtz str. (1/16"-1/8"). Fairly massive	22'	50'	25' 11"	28'		
50'	85	Med. greyish green med. grained fairly massive gabbro with diabasic texture.	50'	85'	33'	35'		
85'	196	Med. greenish fine grained massive & uniform pillow lava with occasional scattered carbonate stringers up to 1/16" in width. Grinding at 104-105, 108-109' 6" 121-122, 134-135, 141-142, 143-144, 154-155, 161-163, 166-167, 172' 6"-174, 178-180, 183-186, 189-190, 193-194	85'	196'	95' 4"	111'		
196'	314'	Med. to dark grey green coarse grained gabbro - approaching anorthosite in composition & appearance - approximately 65% feldspar	196'	314'	110' 8"	118'		
		Grinding 216-217, 224-225	256'	259'	2' 9"	3'		pyrrhotite Very little disseminated pyrites & disseminated pyrro.
		286-288, 304-306, 311-312	259'	261'	1' 11"	2'		1" irr. qtz. some pyrrhotite, rock v.l. 1/2" irr. qtz. v.l.-rock disseminated & cs. blebs pyrites & pyrrhotite-2-5%
			261'	264'	2' 5"	3'		1/2" irr. qtz. pyrites little - rock disseminated pyrites, pyrrhotite
			264'	266'	1' 10"	2'		40% irr. qtz, pyrites L - rock non-mineralized.
			231'	234'	2' 11"	3'		Disseminated pyrrhotite & pyrites little - less than 5%
			234'	237'	2' 9"	3'		" "

NORTH
 EAST
 ELEV.
 AZIM
 DIP

DIAMOND DRILL REPORT

Property CENTRAL WHITESIDES TWP.
 (Claim #P38956)

HOLE No. 1-56

COMMENCED
 FINISHED
 PURPOSE OF
 HOLE

FROM	TO	DESCRIPTION	CORE SAMPLES					DESCRIPTION OF SAMPLE
			FROM	TO	RECOV.	WIDTH	ASSAY	
			237'	240'	2' 10"	3'		Disseminated pyrites & pyrrhotite - L - less than 5%
			240'	243'	2' 11"	3'		" "
			243'	246'	2' 11"	3'		" "
314'	371'	Light to med. grey massive & uniform med. grained gabbro anorthositic phase 80-85% feldspar. 365-366 Dark grey to blackish fine grained rock - probably remnant of tuff.	314'	371'	54' 4"	57'		
371'	384'	Med. grey coarse grained gabbro tending to anorthosite	371	384	12' 3"	13'		
384'	408'	Light grey massive to uniform med. to coarse grained porphyry indefinite contacts - probably later rock cutting gabbro	384	408	19' 6"	22' 6"		
408'	419'	Med. grey coarse grained gabbro High percentage 70 - 80% feldspar.	408	419	10' 3"	11'		
419	424	Light grey med. to coarse grained feldspar porphyry - definite flattish sharp contacts.	419	424	4' 9"	5'		
			419	421	1' 11"	2'		90% greyish Qtz. pyrite Im
424	428	Med. grey coarse grained gabbro high percentage feldspar 80%.						

NORTH
 EAST
 ELEV.
 AZIM
 DIP

DIAMOND DRILL REPORT

Property CENTRAL WELLSIDES TWP.
 (Claim #P38956)

HOLE No. 1-56
 COMMENCED Sept. 22/56.
 FINISHED Sept. 26/56.
 PURPOSE OF HOLE

Logged S.N. Scott. Sept. 27/56 428'-552'

FROM	TO	DESCRIPTION	CORE SAMPLES					DESCRIPTION OF SAMPLE
			FROM	TO	RECOV.	WIDTH	ASSAY	
428	470'3"	Med. greyish green med. to coarse grained massive gabbro - non-uniform appearance - esp. gran size; diabasic texture. Rather high percentage of feldspar 70 - 75%. Occasional (<5%) small 1/2" - 2" barren irregular quartz stringers - some flattish 430-432, 450-451 some grinding.	428'	470'3"	40' 6"	42' 3"		
470'3"	471'	Sharp contact to light greyish med. grained massive feldspar porphyry dike - (prob. later, cutting the gabbro). little dissem. pyrite.	470'3"	471'	9"	9"		
471	530	Med. greyish green med. to coarse grained massive gabbro. 60-70% feldspar, 471-478 med. greyish med. grained 478-500 predom. coarse grained 70-75% feldspar (approach anorthosite) @ 480 - 1" barren qtz. str. @ 491'6" - 1" white flattish qtz. stringer - pyrite v.l. 500-513 med. to coarse grained & massive. 497-500 considerable grinding 513-514 darker greenish fg. - possibly lava remnant (indef. contacts)	471'	530	57' 6"	59		

File P. 38956

2-56

392' South (Ast) and 460' East
 (Ast) From No. 4 Post Claim P38956
 NORTH
 EAST
 ELEV. 257 1/2' Ast.
 AZIM Collar 50°
 DIP At 250' - 58° Corr. - 51°
 At 425' - 60 1/2° Corr. - 54°

DIAMOND DRILL REPORT

Property CENTRAL HITESIDES TWP.
 Claim P38956

HOLE No. September 27th, 1956.
 COMMENCED October 1st, 1956.
 FINISHED
 PURPOSE OF HOLE
 Logged by S. N. Scott, Oct. 4/56.

FROM	TO	DESCRIPTION	CORE SAMPLES					DESCRIPTION OF SAMPLE
			FROM	TO	RECOV.	WIDTH	ASSAY	
0	8'	CASING, sand & gravel.						
8	33'9"	Med. to dark greenish med. f.g. massive & fairly uniform lava type - cut by several narrow 6" dikes of gabbro. In places shows considerable carbonatization.	8	33'9"	24'11"	25'9"		
		27'6" - 31'6" - 4 foot qtz. vein, some Mineralisation, pyrite, pyrrhotite. f.v. fractured.	27'6"	31'6"	3' 9"	4'		Qtz. vein, pyrr. pyrite some
33'9"	96'	Fairly sharp change to fairly massive med. greyish green med. grained gabbro. (diabasic texture) Variable grain size & texture. 33'9" - 44'6" relatively fine grained & 44'6" - 89' predominably coarse texture gabbro - up to 60% feldspar. 89 - 95'6" med. grey med. grained gabbro. ● 43 - 6" narrow greenish f.g. lava remnant.	33'9"	96'	60'	62'3"		
			39'6"	42'	2'4"	2'6"		little dissem. pyrrhotite
96'	99'	Sharp change to dark grey fine grained rock - possibly lava remnant.	96'	99'	2'10"	3'		
99'	193'	Sharp change to med. greyish green med. grained massive & uniform	99'	193'	91'	94'		

NORTH
 EAST
 ELEV.
 AZIM
 DIP

DIAMOND DRILL REPORT

Property CENTRAL WHITESIDES TWP.

Claim P38956

HOLE No. 2-56

COMMENCED
 FINISHED
 PURPOSE OF
 HOLE

FROM	TO	DESCRIPTION	CORE SAMPLES					DESCRIPTION OF SAMPLE
			FROM	TO	RECOV.	WIDTH	ASSAY	
		gabbro type (distinct diabasic texture)						
		Quite uniform grained 50% feldspar						
		Occasional small irregular						
		barren Qtz. str.						
193	197	Med. greyish med. f. grained massive	193'	197'	3'10"	4'		
		lava type - probably remnant.						
197	240	Med. greyish green med. grained	197'	240'	42' 4"	43'		
		massive & uniform gabbro (diabasic texture)						
		quite uniform in appearance						
		- grain size, texture etc.						
240	249	Sharp change to med. to light	240'	249'	8'8"	9'		
		greyish med. to coarse textured						
		feldspar porphyry. (probably						
		later cutting the gabbro). At						
		244'6" 6" gabbro remnant.						
249	314	Gradational change to med. greyish	249'	314'	63'8"	65'		
		med. f. grained massive & uniform						
		rock - probably lava type						
		About dacite in comp. &						
		appearance.						
		About 15% small 1" - 2"						
		flattish barren Qtz. str.						
314	430	F. sharp change to med. greyish	314'	355'	113'4"	126'		
		green med. to coarse grained massive & gabbro						
		type - variable grain size - non-uniform appearance						
	430'	About 50% feldspar. End of Hole.						

File p. 28456

NORTH 392' South (Ast.) and 460 East (Ast)
 EAST From No. 4 Post Claim P38956
 ELEV. 77' Ast.
 AZIM At 50' - 49° Corrected
 DIP At 50' - 53°
 695' - 56°

DIAMOND DRILL REPORT

Property CENTRAL WHITESIDES
 Claim P38956

HOLE No. 3-56

COMMENCED October 3rd, 1956
 FINISHED October 16th, 1956
 PURPOSE OF HOLE

Logged Oct. 5th by S. N. Scott
 From 0 - 110'

FROM	TO	DESCRIPTION	CORE SAMPLES					DESCRIPTION OF SAMPLE
			FROM	TO	RECOV.	WIDTH	ASSAY	
0	7'	CASING						
7'	77'	Med. greenish f. grained f. massive & Uniform lava type. At 10' - 8" dike grey feldspar porphyry At 13' - 40% irreg. qtz. str. across 1'. At 75'6" - 3" dike feldspar porphyry	7	77	67' 6"	70		
77	80	Med. greyish med. grained massive feldspar porphyry dike - gradational contacts.	77	80	2' 9"	3		
80	110	Med. greenish f.g. f.massive & uniform lava type 80 - 85 A number of small 3" -4" porphyry dikelet 97 - 98.5 40% irreg. qtz. v.l. @ 96 f.g. and amygdaloidal 82 - 110 10-15% irreg. barren qtz. str. 80 - 110 some grinding	80'	110'	28' 6"	30'		40% irreg. qtz. v.l.
			96	98'6"	1' 4"	1' 6"		

NORTH
 EAST
 ELEV.
 AZIM
 DIP

DIAMOND DRILL REPORT

Property CENTRAL WHITESIDES
 Claim P 38956

HOLE No. 3-56

COMMENCED
 FINISHED
 PURPOSE OF
 HOLE

110'-527' Logged by S. N. Scott
 October 11th, 1956

FROM	TO	DESCRIPTION	CORE SAMPLES					DESCRIPTION OF SAMPLE
			FROM	TO	RECOV.	WIDTH	ASSAY	
110	207	Med. greenish grey med. f. grained slightly streaky amygdaloidal lava type prominent amygdules 111 - 115. 138 - 153 non massive and uniform - med. greyish med. grained. 110 - 159 5% small irregular barren Qtz. stringers.	110	207	94'	97'		
		● 141 few specks pyrite.	159	161	1' 9"	2'		40% greyish Qtz. little Chalco some
		153 - 172 med. greenish f.g. slightly streaky						
		172 - 185 gradational to med. gr. med. greenish f. massive & uniform.						
		185 - 195 quite coarse massive & uniform						
		195 - 207 grading to slightly finer, massive & uniform						
		159 - 184 5% irreg. Qtz., in places few specks pyrite						
		184 - 207 No appreciable quartz.						
207	268'6"	Med. greyish green med. & med. f. grained f. massive & uniform lava type some rather coarse sections but on whole fairly uniform No appreciable quartz	207	268'6"	59'6"	61'6"		
		265- 268 gradational to relatively coarse massive uniform greenstone.						
268'6"	278	Sharp change to med. greyish green fine grained schistose & amygdaloidal pillow lava.	268'6"	278	9'2"	10'6"		

NORTH
 EAST
 ELEV.
 AZIM
 DIP

DIAMOND DRILL REPORT

Property

COMMENCED
 FINISHED
 PURPOSE OF
 HOLE

FROM	TO	DESCRIPTION	CORE SAMPLES					DESCRIPTION OF SAMPLE
			FROM	TO	RECOV.	WIDTH	ASSAY	
278	287	Gradational to med. greyish green med. grained (coarse) greenstone. Massive & uniform	278	287	8'6"	9"		
287	353	Gradation to med. greenish grey med. f. to f. grained rather streaky lava type	287	353	63'	66'		
		No appreciable quartz.	290	292	1'11"	2'		50% Qtz. carb. pyrite some
		@ 290 - 292 Qtz. carb. vein.						
		Some brecciation indicated.						
		329 - 332 5% irreg. barren Qtz. str.						
		Elsewhere occasional barren Qtz. str.						
353	482	Gradation to med. greenish grey med. f. to fine grained massive & uniform lava type	353	482	12'6"	129'		
		Occasional tiny Qtz. str.						
		414 - 417 massive, coarser grained section (gradational).						
		402- 477 no appreciable quartz.						
		477 - 482 - becomes grey to buff fine grained.						
482	510	Rather sharp change to med. greyish green fine grained spherulitic pillow lava. Scattered patches of rather fine spherulitic material throughout. Slightly streaky appearance. No appreciable Qtz.	482	510	20'6"	23'		
510	527	F. sharp change to med. green med. gr. massive uniform Qtz. diabase dike. Well developed diabase texture.	510	522	11'6"	12'		

NORTH
 EAST
 ELEV.
 AZIM
 DIP

DIAMOND DRILL REPORT

Property CENTRAL WHITESIDES

COMMENCED
 FINISHED
 PURPOSE OF
 HOLE

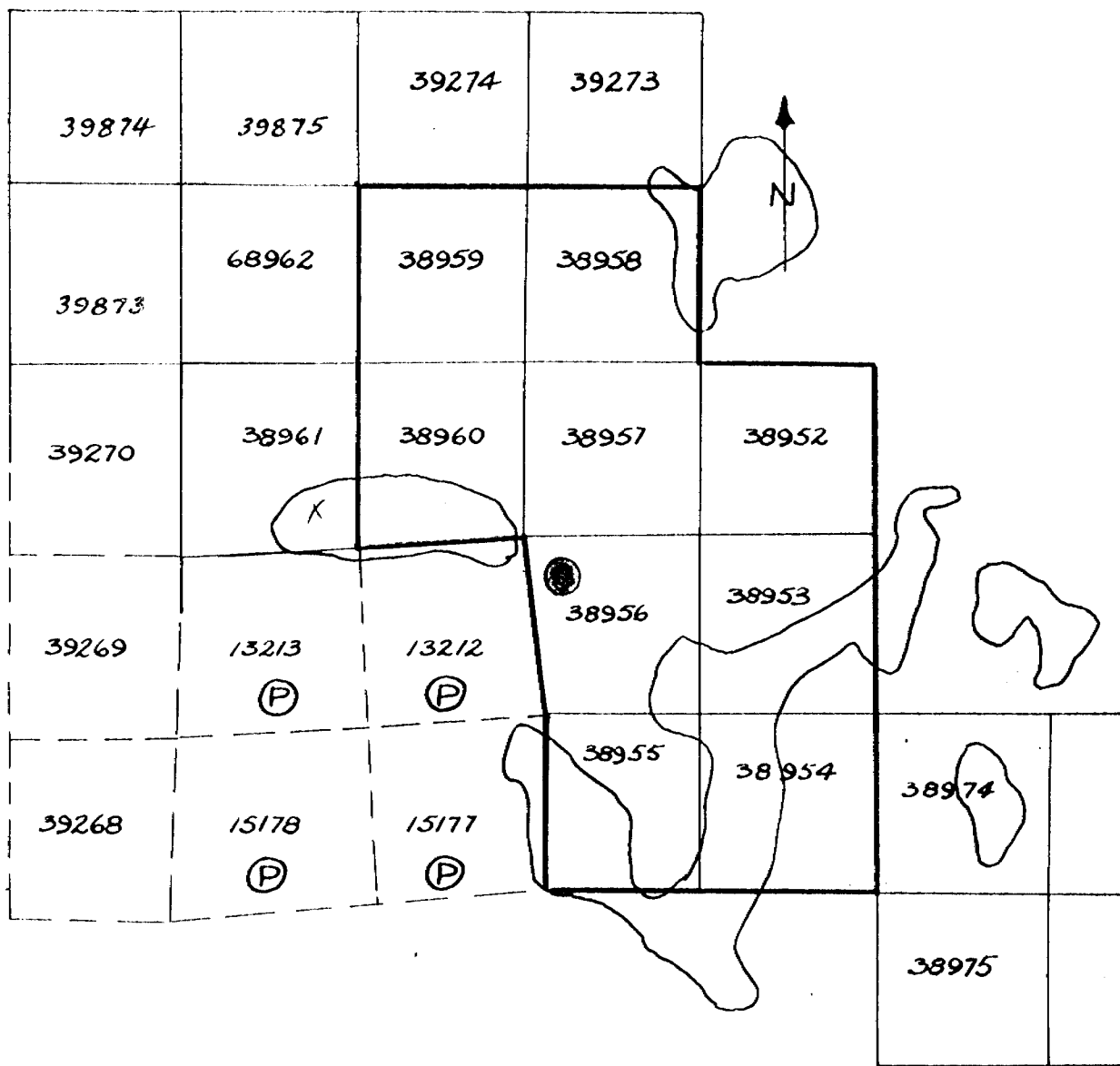
Logged by S.N. Scott Oct. 18th From 527'-700'

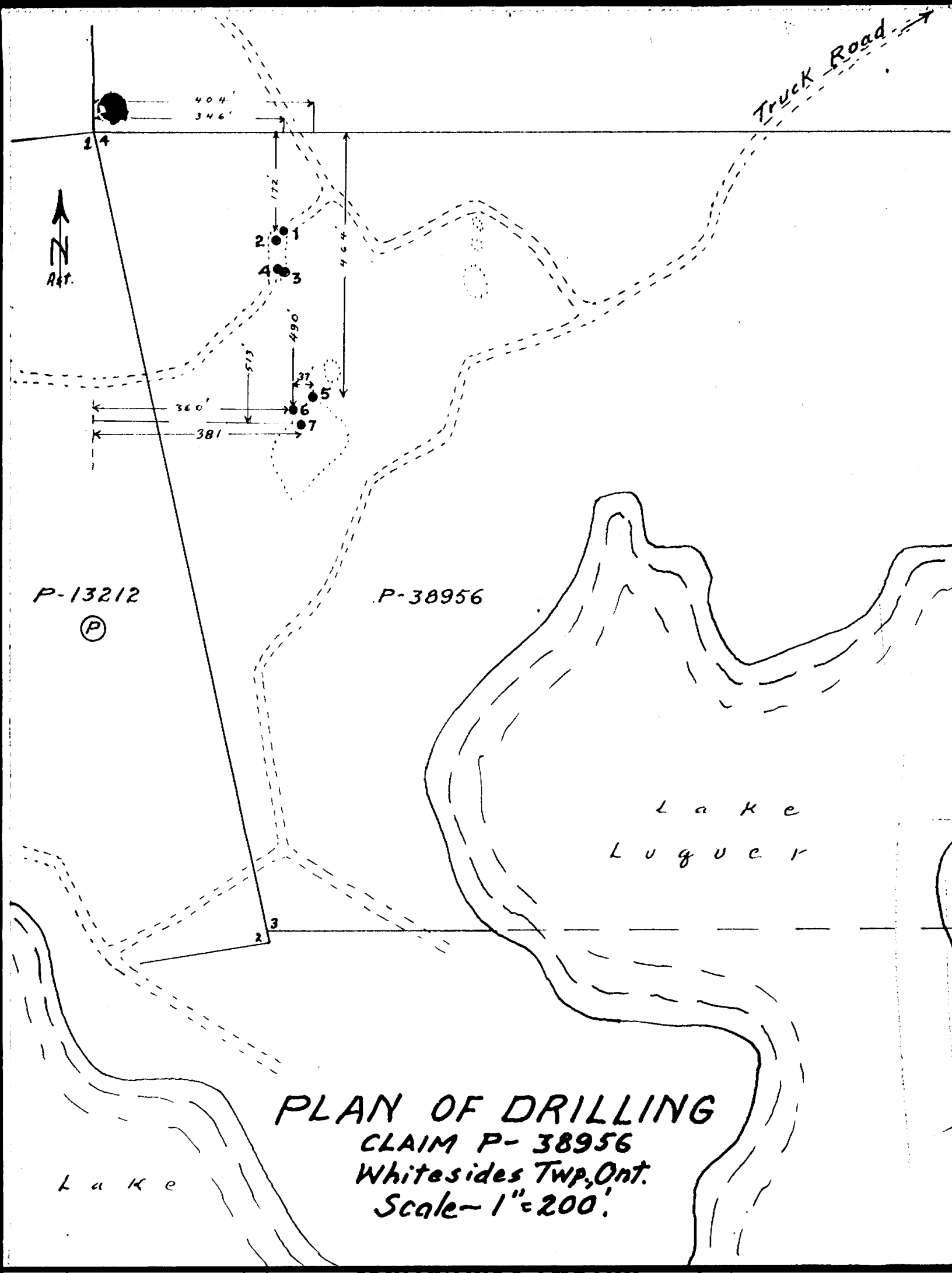
FROM	TO	DESCRIPTION	CORE SAMPLES					DESCRIPTION OF SAMPLE
			FROM	TO	RECOV.	WIDTH	ASSAY	
527	566	Med. greenish grey med. grained massive and uniform diabase. Well developed diabasic texture. Occasional small barren qtz. str. Chilled contact @ 566 - gradational.	527	566	37'6"	39'		
566	619	Gradational (?) change to med. to light greenish grey med. f. grained slightly spherulitic lava. Occasional scattered cluster of whitish spherulites. <5% tiny barren qtz. strs. 602-619 clusters of spherulites much more numerous. Rather distinct zone. @ 619 2% dissem. pyrite over 1'.	566	619	50'6"	53'		
619	671	Gradational to med. greyish green med. f. grained greenstone. F. massive & uniform appearance. Occasional small barren qtz. strs.	619	671	48'	52'		
671	700	F. sharp change to light greenish fine grained streaky or blotchy fragmental horizon. Very numerous subangular fragments (paler color) up to 1" throughout. 700 End of Hole.	671	700	26'	29'		

DIAMOND DRILLING-CLAIM P-38956

Whitesides Twp, Ont.

Scale - 1" = 20 ch.





Truck Road →



P-13212
(P)

P-38956

L a k e
L u g u e r

L a k e

PLAN OF DRILLING
CLAIM P-38956
Whitesides Twp, Ont.
Scale - 1" = 200'