



42A05NW8520 11 WHITESIDES

010

Diamond Drilling

Township of WHITESIDES

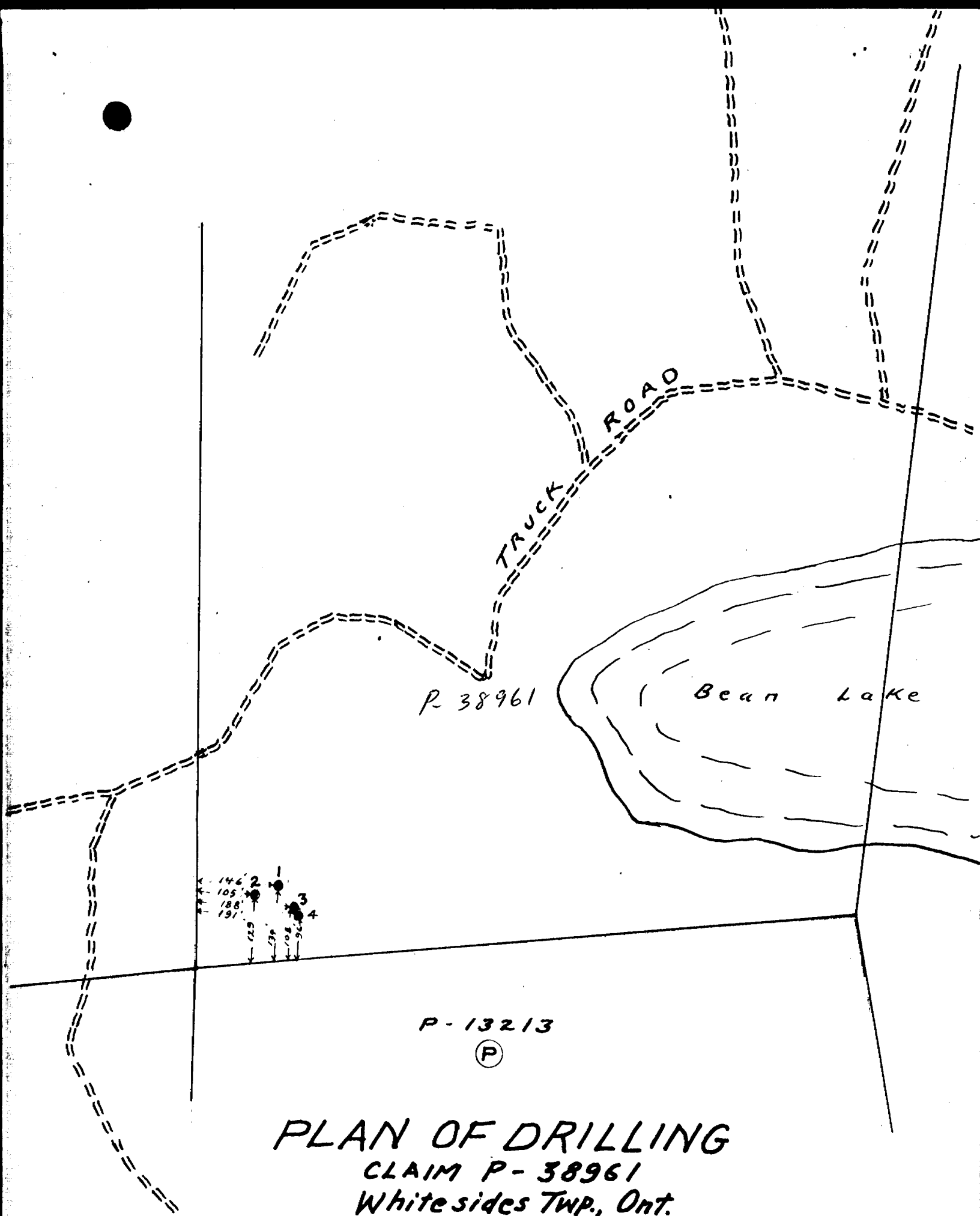
Report No 11

Work performed by: Hollinger Mines

Claim No	Hole No	Footage	Date	Note
P 38961	1	58.0'	Dec/55	
	2	30.0'	Dec/55	
	3	59.9'	Jan/56	
	4	61.9'	Jan/56	

209,8'

Notes:



P-38961

Bean Lake

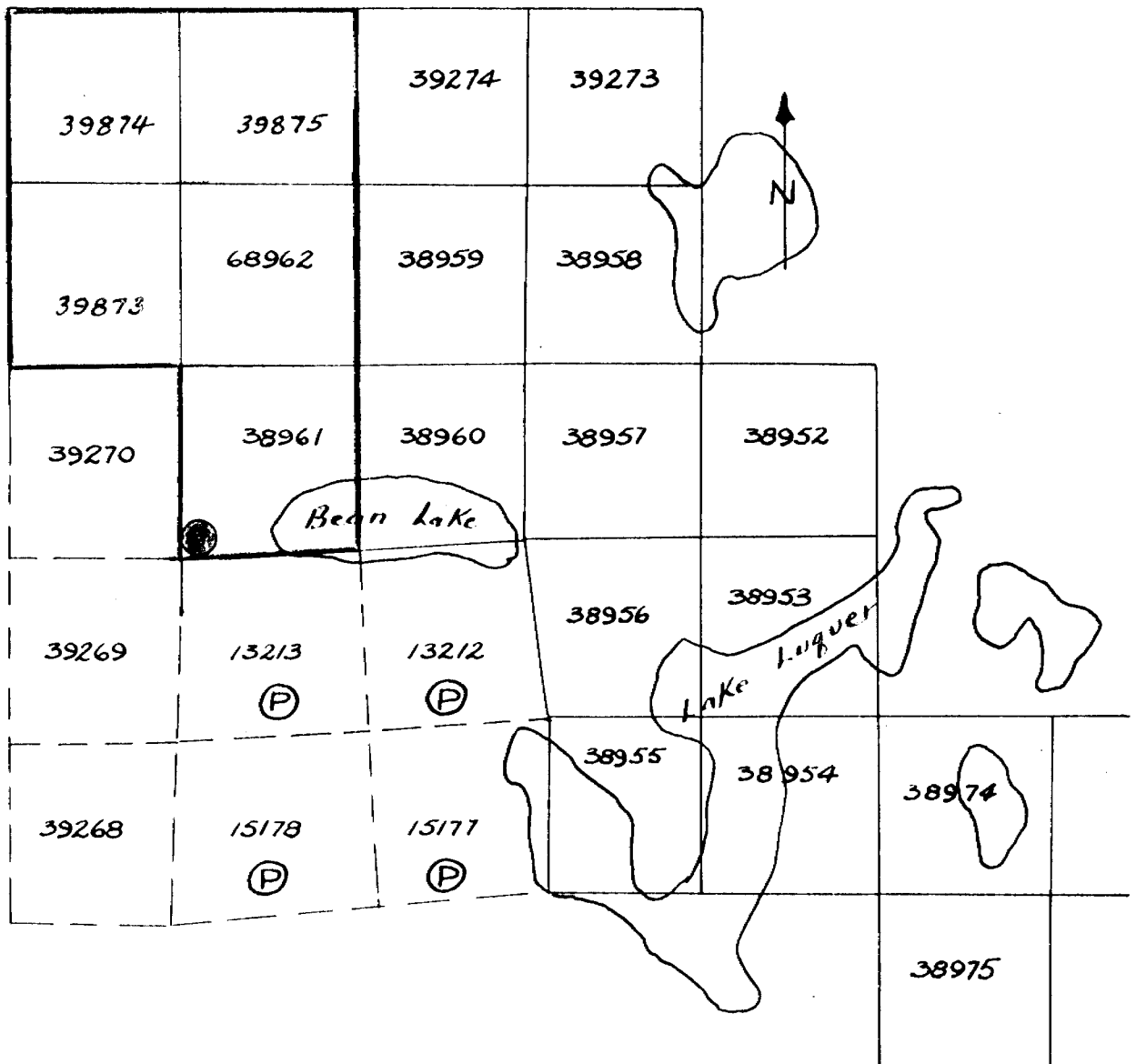
146'  
105'  
188'  
191'  
125'  
104'  
92'

P-13213

Ⓟ

**PLAN OF DRILLING**  
CLAIM P-38961  
Whitesides Twp., Ont.  
Scale - 1" = 200'

DIAMOND DRILLING-CLAIM P-38961  
 Whitesides Twp., Ont.  
 Scale - 1" = 20 ch.



Location No #3 Post  
Claim P - 38961

# DIAMOND DRILL REPORT

HOLE No. 3

COMMENCED Jan. 3, 1956  
FINISHED Jan. 12, 1956

NORTH 134° ) Collar is S 71° E Mag.  
EAST 188° ) for 44.5' from Collar #1  
ELEV. ....  
AZIM 180° Mag. (South Mag.)  
DIP - 40°

Property CLAIM P - 38961

PURPOSE OF HOLE .....

Logged January 14, 1956 - S. N. Scott

Length 60 feet.

WHITESIDES TWP., ONT.

FROM	TO	DESCRIPTION	CORE SAMPLES					DESCRIPTION OF SAMPLE
			FROM	TO	RECOV.	WIDTH	ASSAY	
0	28.3	Med. greenish grey medium grained fairly massive gabbroic rock (intrusive) f. high percentage feldspar (approach anorthosite). Moderately altered. Considerable leaching and grinding 0-2'. 2 - 28.3' quite massive, recovery good.	0	28.3	27.6	28.3		
			0	1.5	1.3	1.5		Little disseminated pyrrhotite
								2-1" Q. str. v.l.
			1.5	3.0	1.4	1.5		F. massive pyrrhotite & little
								chalco over 11". Remainder
								disseminated pyrrhotite s.m.
			4.8	5.6	.7	.8		Some pyrrhotite, massive over
								2-3". No chalco.
28.3	33.0	Dark green to black f. grained diabase dike. (chilled) Sharp contact @ 50° to core axis.	28.3	33.0	1.7	1.9		
33.0	59.9	Ditto. Med. greenish grey medium grained massive gabbroic rock (intrusive). 43.5 - 45.5' fine grained section. Remainder massive medium textured.	33.0	59.9	26.2	26.9		
			47.4	48.6	1.1	1.2		70% white sugary quartz disseminated pyrrhotite l.m.

*S. N. Scott*  
*Jan 14/56*





Location No #3 Post  
 Claim No. P - 38961

CENTRAL WHITESIDES (HOLLINGER STAKING)

# DIAMOND DRILL REPORT

HOLE No. 1  
 COMMENCED Dec. 2/55  
 FINISHED Dec. 14/55  
 PURPOSE OF HOLE  
 Logged January 14/56 S. N. Scott

NORTH 152 ft.  
 EAST 146 ft.  
 ELEV. 238° Mag. (S 58° W Mag.)  
 AZIM - 37°  
 DIP  
 Length - 58 feet.

Property CLAIM P - 38961  
 WHITESIDES TWP., ONT.

FROM	TO	DESCRIPTION	CORE SAMPLES					DESCRIPTION OF SAMPLE
			FROM	TO	RECOV.	WIDTH	ASSAY	
0	44.5	Med. greenish grey medium grained, f. massive gabbroic rock (intrusive), (fairly high percentage feldspar). Moderately altered, rather variable texture. Qtz. stringers at 17', 1" flattish barren 27.5', 1" flattish barren 30.5', 6" silicif. barren 38', 2" str. barren	0	44.5	42.	44.5		
44.5	58.3	F. sharp contact to medium greenish grey, fine grained, fairly massive lava type. Qtz. stringers at 45', 6" barren 54', 6" barren Little dissem. pyrrhotite & pyrite 50 - 51', 52.5 - 53.5', 55 - 55.5', 57-57.6'.	44.5	58.3	13.4	13.8		F. massive pyrrhotite, pyrite, chalco. little
			46.4	47.3	0.8	0.9		
END OF HOLE @ 58.0'								

*S. N. Scott*  
 Jan 14/56.