



42A05SE0064 27 THORNELOE

010

DIAMOND DRILLING

Township: THORNELOE

Report No: 27

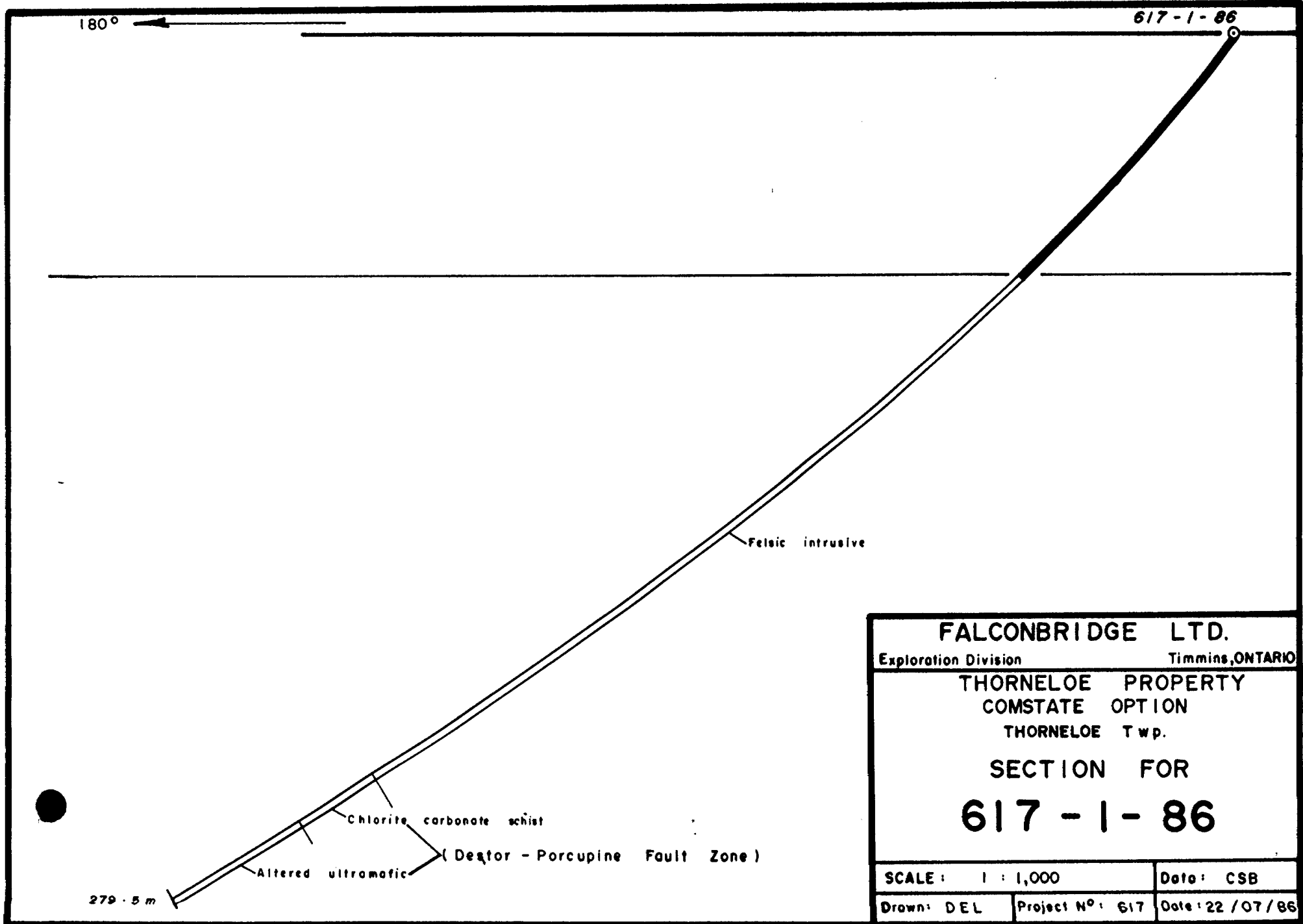
WORK PERFORMED FOR: Falconbridge Ltd.

RECORDED HOLDER: SAME AS ABOVE [x]

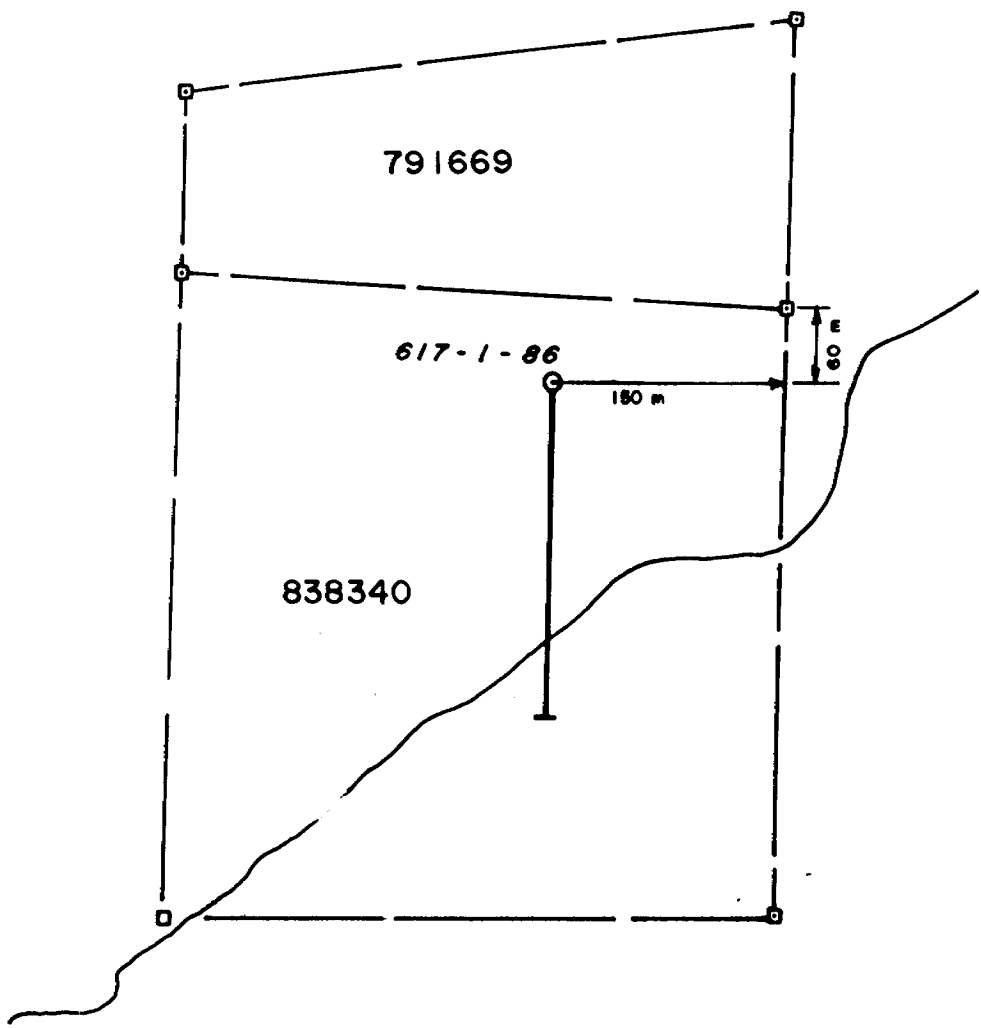
: OTHER []

<u>CLAIM NO.</u>	<u>HOLE NO.</u>	<u>FOOTAGE</u>	<u>DATE</u>	<u>NOTE</u>
P 838340	617-86	279.5 m	June-July/86	(1)

NOTES: (1) #269-86



FALCONBRIDGE LTD.		
Exploration Division		Timmins, ONTARIO
THORNELOE PROPERTY COMSTATE OPTION THORNELOE Twp.		
SECTION FOR 617 - 1 - 86		
SCALE: 1 : 1,000	Date: CSB	
Drawn: DEL	Project N°: 617	Date: 22 / 07 / 86



FALCONBRIDGE LTD.	
Exploration Division	Timmins, ONTARIO
THORNELOE PROPERTY COMSTATE OPTION THORNELOE Twp.	
SECTION FOR DDH 617 - 1 - 86.	
SCALE: 1 : 5,000	Date: CSB
Drawn: DEL	Project N ^o : 617 Date: 22/07/86

Falconbridge Ltd.

HOLE NO: 617-1-86

PAGE: 1-3

Drilled by: E. Colbert Diamond Drilling
 Started: June 30/86
 Ended: July 11/86

Property: Comstate Option PN 617
 Township: Thorneloe Twp
 Logged by: C.S. Bruce

Latitude: L17+50W 3+60N
 Azimuth: 180°
 Élévation:

Longitude: Corr.
 Dip: -50° collar
 Length: 279.5m
 60.96m 44°
 121.92m 38°
 182.88m 35°
 243.84m 32°

FROM	TO	DESCRIPTION	SAMPLE NO.	FROM	TO	LENGTH				
0	64.6m	Casing								
64.6 m	231.40m	<p><u>Felsic Intrusive</u> High level felsic intrusive, both porphyritic and massive phases, possibly a calc-alkalic meta-volcanic (crystal tuff) medium to fine grained, buff to grey colour, moderately silicified, foliated section, carbonatized. Little or no sulphides.</p> <p>64.6m - 77.38m porphyritic felsic intrusive medium grained, massive, buff colour, brown carbonate alteration, moderately silicified, foliation at 70° to core axis. Distinct feldspar phenocrysts 1-2mm subhedral, odd quartz phenocryst. Streaks of fine chlorite wisps, minor sericite alteration strongly carbonatized. Little or no sulphides.</p> <p>77.38m - 113.78m porphyritic felsic intrusive, fine grained, massive grey colour, foliation 65° to core axis same as above as from 64.6m - 77.38m.</p> <p>85.0m - 87.5m diorite? grey green colour, massive, medium to fine grained strongly carbonated</p> <p>83.4m - 85.0m sheared contact, blocky, water porous</p> <p>113.78m - 126.84m felsic intrusive, medium grained, numerous chlorite streaks, massive grey colour, silicified, weak foliation 65° to core axis. Little or no sulphides. Very minor sericite alteration.</p> <p>121.34m - 126.84m distinct 1-2m pyroxenes? amphiboles, minor amount of biotite</p>								

CITIZEN COLLECTOR SURVEY
 ASSIGNMENT FILES
 REVIEW OFFICE

AUG 29 1986

RECEIVED

FROM	TO	DESCRIPTION	SAMPLE NO.	FROM	TO	LENGTH	Au (ppb)			
		126.84m - 135.2m felsic intrusive very fine grained, massive, pale grey colour, silicified, weak foliation, minor sericite								
		133.80m - 134.06m sheared chlorite zone								
		135.2m - 140.80m felsic intrusive medium grained, massive, grey colour, numerous chlorite streaks, foliation at 60° to core axis sericite alteration parallel to foliation. Weakly silicified strongly carbonated, odd quartz phenocryst. Sheared upper and lower contact at 70° to core axis. Little or no sulphides								
		140.03m - 140.80m sheared contact, chlorite minor quartz veins.	9801	140.03m	140.80m	0.77m				
		140.80m - 200.86m felsic intrusive, massive fine to medium grained, grey colour moderately silicified, and strongly carbonated, minor sericite alteration weak foliation								
		200.86m - 210.75 porphyritic felsic intrusive possible a calc-alkalic crystal tuff? greenish grey colour, strongly to moderately carbonated, foliation at 50° to the core axis. Distinct feldspar phenocryst 1-2mm subhedral								
		210.75m - 229.67m felsic intrusive, same as above as from 140.80, - 200.86m								
		222.33m - 223.64m; 229.67m - 231.40m Coarse grained quartz feldspar porphyry dykes pale greyish colour, massive								
231.40	249.16m	<u>Chlorite - Carbonate Schist</u> Destor Porcupine Fault Zone Tectonized mafic volcanic, chlorite carbonate schist, colour banded, white to greyish green, banding at mm scale, strongly schistose contorted typically wavy to crenulated. Schistosity (S ₂) varies from 30-60° to the core axis. Carbonate veins range in width from less than 1-5mm. Weak to strongly magnetic								

FROM	TO	DESCRIPTION	SAMPLE NO.	FROM	TO	LENGTH	Au (ppb)			
		231.40m - 234.64m Transition zone from previous unit								
		234.08m - 234.64m Quartz feldspar porphyry dyke, buff colour, fine grained, weak foliation, minor sericite								
		243.6m - 243.9m, 246.3m - 247.04m Quartz chlorite veins irregular quartz veins with chlorite, unmineralized	9802 9803	243.6m 246.3m	243.9m 247.04m	0.3m 0.74m				
249.16m	279.5m	<u>Altered Ultramafic</u> Destor Porcupine Fault Zone Altered ultramafic, soft, talcy. Serpentine dark bluish green colour, greasy feel to core, soapstone, locally strong to moderately magnetic, possible due to fine grained disseminated magnetite. Minor carbonate veins.								
		262.1m - 263.35m; 266.86m - 267m; Syenite intrusive dykes, pinkish colour, massive, medium grained, intensely carbonated 1% fine grained disseminated pyrite. Contacts at 80° to core axis	9804 9805	262.1m 266.86	263.35m 267.4m	1.25m 0.54m				
		272.37m - 274.4m ultramafic intrusive dyke, dark green colour, massive non magnetic, carbonated sheared contacts, moderately hard, distinct blades needles of amphiboles? (not spinifexs)								
279.5m		End of Hole								
		Remark: Casing pulled								
		<i>July 22 1985</i> <i>C. S. Bruce</i>								
			ONTARIO GEOLOGICAL SURVEY ASSESSMENT FILES RESEARCH OFFICE AUG 29 1986 RECEIVED							



#2691



42A05SE0064 27 THORNELOE

900

Mini

Name and Postal Address of Recorded Holder

Falconbridge Ltd. 'Thorneloe Twp'

A-21647

P.O. Box 1140 571 Moneta Avenue Timmins, Ontario P4N 7H9

Summary of Work Performance and Distribution of Credits

Total Work Days Cr. claimed 917	Mining Claim			Work Days Cr.	Mining Claim			Work Days Cr.
	Prefix	Number	Days Cr.		Prefix	Number	Days Cr.	
for Performance of the following work. (Check one only)	P	568444	40.84					
		804618	60					
		804619	60					

- Manual Work
- Shaft Sinking Drifting or other Lateral Work.
- Compressed Air, other Power driven or mechanical equip.
- Power Stripping
- Diamond or other Core drilling
- Land Survey

All the work was performed on Mining Claim(s): 838340

Drilling June 30 to July 11, 1986

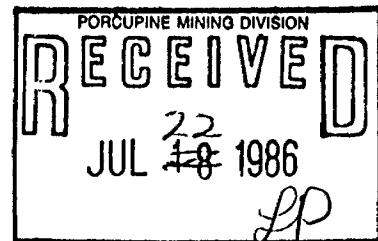
Required Information eg: type of equipment, Names, Addresses, etc. (See Table Below)

Colbert Drilling: Exploration <0
167 Lakeshore Lane
Timmins Ontario
P4N 7A1
264-7529

ASSESSMENT FILES
RESEARCH OFFICE

AUG 29 1986

RECEIVED



Note: 297.5m (917') 917 days submitted using 160.84 days

Remaining day 756.16 days reserve to be applied to claims at a later date.

RECORDED

JUL 22 1986

Not allowed. These claims do not meet the requirements of the mining Act.

Date of Report

July 22/1986

Recorded Holder or Agent (Signature)

C. S. Bruce

Certification Verifying Report of Work

I hereby certify that I have a personal and intimate knowledge of the facts set forth in the Report of Work annexed hereto, having performed the work or witnessed same during and/or after its completion and the annexed report is true. (267-1188)

Name and Postal Address of Person Certifying

C. Scott Bruce P.O. Box 1140 571 Moneta Avenue

Date Certified

July 22/86

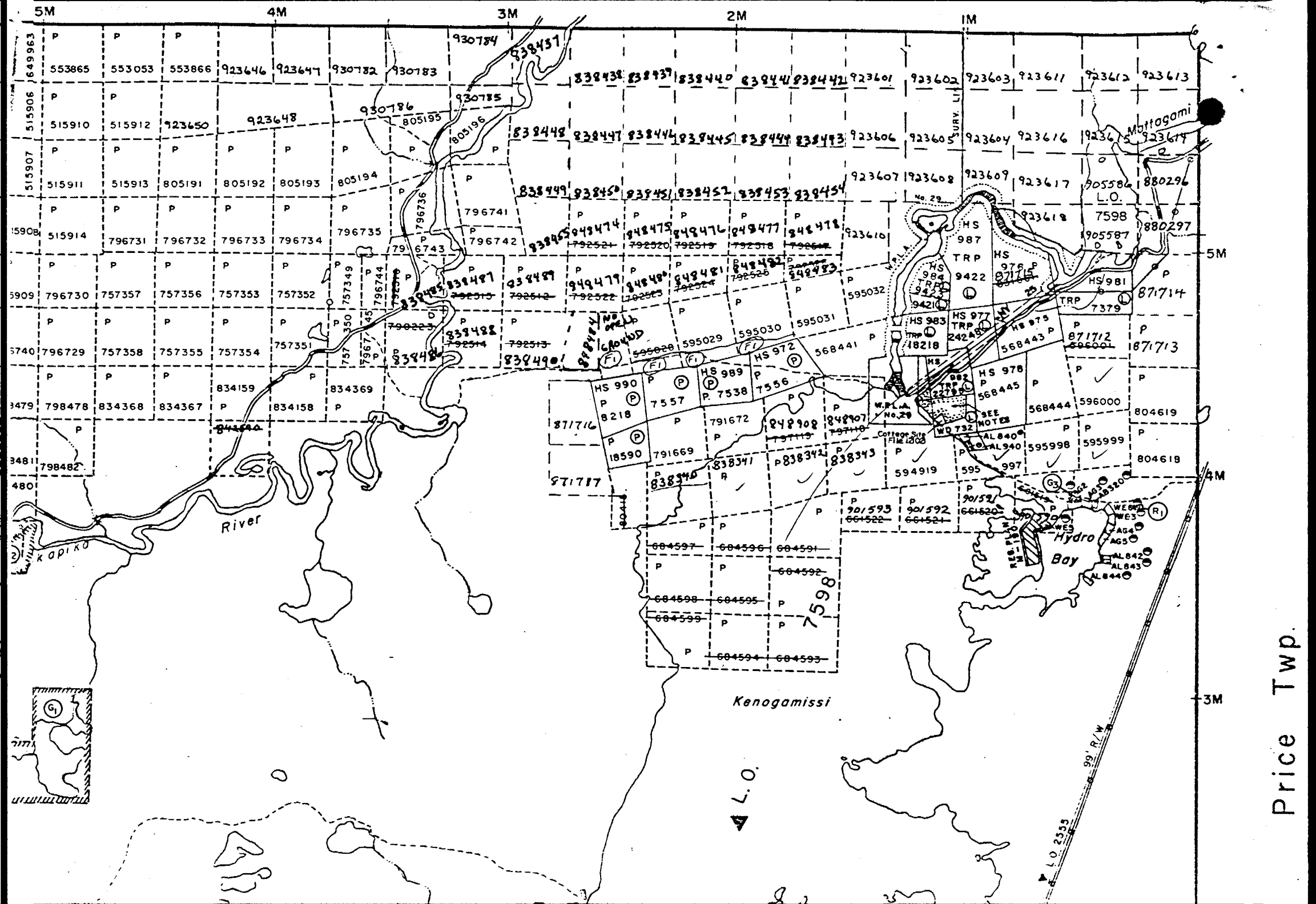
Certified by (Signature)

C. S. Bruce

Timmins, Ontario P4N 7H9

Table of Information/Attachments Required by the Mining Recorder

Type of Work	Specific information per type	Other information (Common to 2 or more types)	Attachments
Manual Work	Nil	Names and addresses of men who performed manual work /operated equipment, together with dates and hours of employment.	Work Sketch: these are required to show the location and extent of work in relation to the nearest claim post.
Shaft Sinking, Drifting or other Lateral Work			
Compressed air, other power driven or mechanical equip.			
Power Stripping	Type of equipment and amount expended. Note: Proof of actual cost must be submitted within 30 days of recording.	Names and addresses of owner or operator together with dates when drilling/stripping done.	Work Sketch (as above) in duplicate
Diamond or other core drilling	Signed core log showing; footage, diameter of core, number and angles of holes.		
Land Survey	Name and address of Ontario land surveyer.	Nil	Nil



Price Twp.