

DIAMOND DRILLING



42A05SE0157 25 DENTON

010

TOWNSHIP: DENTON

REPORT No.: 25

WORK PERFORMED BY: HOLLINGER ARGUS LIMITED

<u>CLAIM No.</u>	<u>HOLE No.</u>	<u>FOOTAGE</u>	<u>DATE</u>	<u>NOTE</u>
P 568503	1-2-82	288.0	May/82	(1)
	1-2-82	250.0	May/82	(1)

538'

NOTES: (1) #168-82

Denton Twp.

CARSCALLEN TWP. M. 267

M-273

Jowsey L.

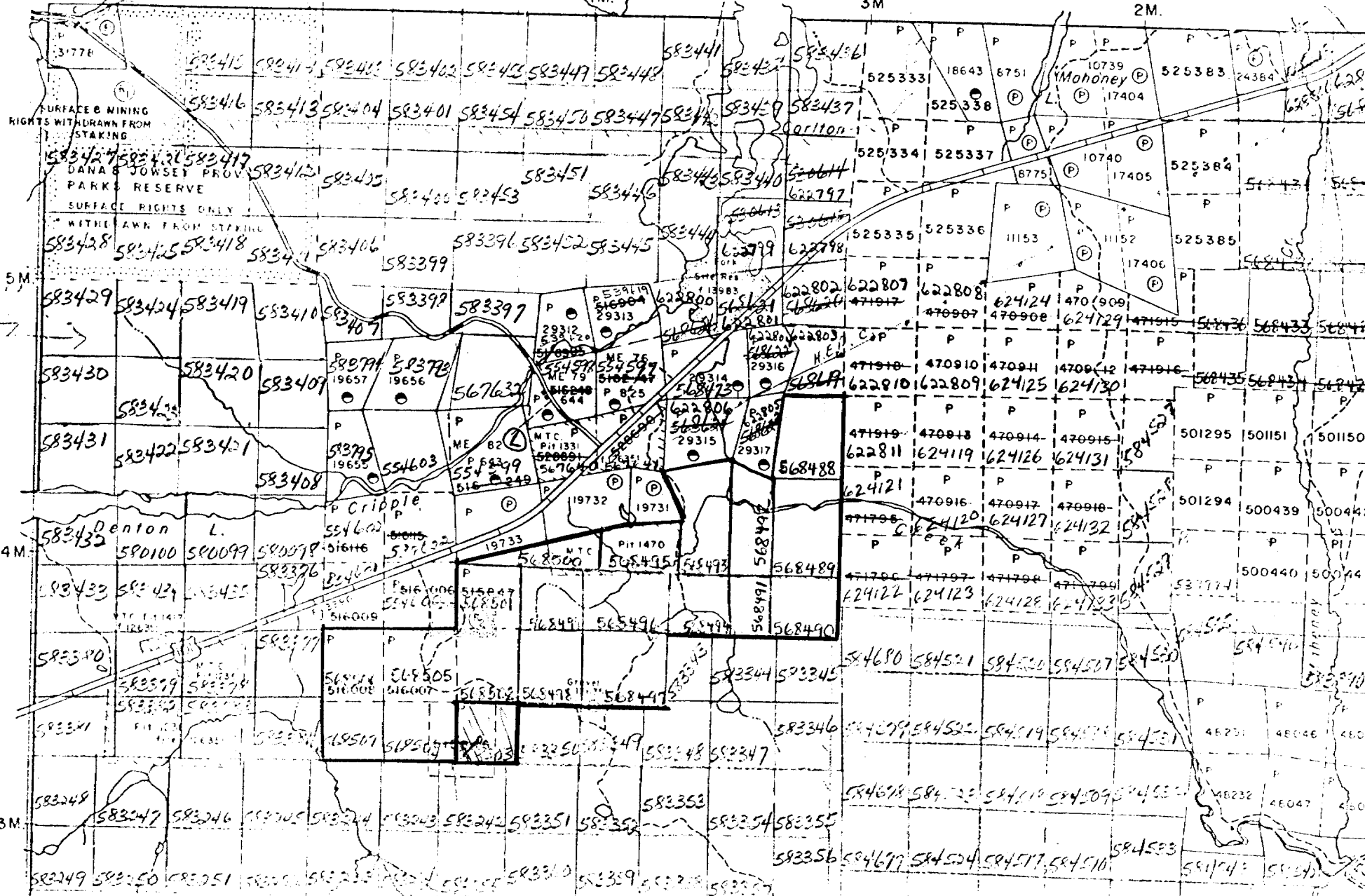
S.R.O. Fee for Public Use

5M.

4M.

3M.

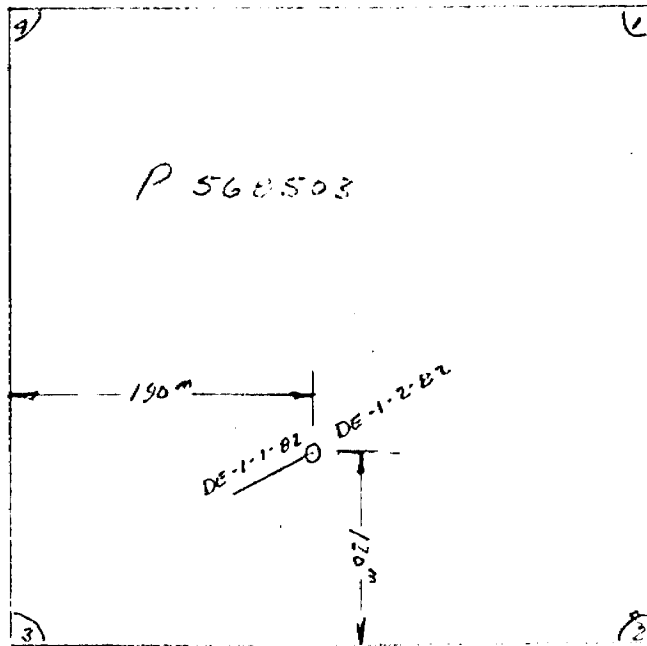
2M.



ER TWP. M. 290

PLAN OF D.D.M DE-1-1-82 & DE-1-2-82

DENBOW
Twp
SCALE
1" = 400'



DE 1-1-82

LENGTH 288'
DIP -50°
Az 242°
Dia of CORE 1.44" BD
START MAY 5/82
FINISH MAY 7/82

DE 1-2-82

LENGTH 250'
DIP -90°
Az N/A
Dia of CORE 1.44" ISG
START MAY 7/82
FINISH MAY 10/82

CONTRACTOR BRADLEY BIRN LTD
TIMMINI, ONT

DIAMOND DRILL REPORT

Hole No. DE-1-2-82

2.

PROPERTY Denton #1-80 GroupTownship Denton Township

From	To	DESCRIPTION	From	To	Width						Description of Sample
		- the core is non-conductive.									
		- the schistosity varies between 18° and 50° from the core axis.	66'	70'	4'						A ₂ T, less chloritic, minor diss. Py (<1%); some hematite staining.
		- a number of quartz carbonate veins are seen throughout, chlorite is often associated with the quartz.	80	81.5	1.5						A ₂ T chloritic, minor diss. Py (<1%) very thin crenulated laminae of carbonate. Assayed for As (ppm), Au.
		- some tourmaline is visible in a quartz veinlet @ 146'.	81.5	82.5	1						A ₂ T, chloritic with very thin laminae of carbonate diss. Py concurrent to laminae (<1%);
		- some sections containing fault gouge material are observed throughout the hole, i.e. 48', 45' and 124'.									diss. arsenopyrite concurrent to laminae (<1%). Assayed for Au, As (ppm).
		- the chloritic content of the core is quite variable; in fact, some sections are almost entirely schistose chlorite with carbonate; i.e. 171' and 185'.	82.5	85	2.5						A ₂ T, chloritic, 20% qtz CO ₃ stringers, some sericite and some diss. Pyrite (<1%). Assayed for Au, As (ppm).
		- one section containing sericite was observed @ 152.7'.	85	89	4						A ₂ T, chloritic, 10% qtz-CO ₃ stringers.
		- the core has a high carbonate component, often interbedded with the tuff forming a laminated appearance which commonly shows tight crenulations; the carbonates also occur closely associated with the quartz veinlets as well as unconcurrent stringers	105	107	2						A ₂ T, chloritic, one 1" qtz-CO ₃ veinlet, some diss. cubic Pyrite (<2%).
			107	110	3						A ₂ T, chloritic, increase in CO ₃ stringers which are often crenulated, some diss. cubic pyrite (<1%).
			115	120	5						A ₂ T, heavily carbonated, up to 20% carbonate, non concurrent to schistosity.

DIAMOND DRILL REPORT

Hole No.

DE-1-2-82

3.

PROPERTY Denton #1-80 Group

Township Denton Township

From	To	DESCRIPTION	From	To	Width						Description of Sample
		of carbonate. The carbonate content is estimated to be as much as 40% in some sections, i.e. from 180' to 185'.	125'	130'	5'						A ₂ T grey in colour inundated with non concurrent CO ₃ , some diss. Py (<1%) (2 large cubes ≈ 4mm). Assayed for Au, Ni (ppm).
		Mineralization:	140	142	2						A ₂ T, dark grey in colour, 10% qtz carb. strcs + chlorite, 2 patches of brownish red alteration mineral (sericite?), diss. Py (<1%)
		- disseminated pyrite sometimes in the form of small cubes up to 2mm in size have been observed throughout the core.	142	145	3						A ₂ T + thin crenulated carbonate laminae & 1 small qtz veinlet.
		- overall the percentage of disseminated pyrite is less than 1%, but local concentrations of 1 or 2 inches contain up to 5% (i.e. @ 36').	145	147	2						A ₂ T + 1 qtz vein + tourmaline stringers.
		- cubic magnetite mineralization was observed between 49.5' and 52' (<3%).	155	160	5						A ₂ T crenulated, more carb. @ 156', very fine diss. Py throughout as well as the odd small cube (total < 2%).
		- at 82 feet, a stringer with arsenopyrite was observed paralleling a stringer with disseminated pyrite; over 2", the percentage of arsenopyrite ≈ 1%.	175	180	5						A ₂ T could be carb. chlorite schist, up to 40% carb. both concurrent to the bedding + non concurrent. A couple of cubes of Py (<1%).
			205	210	5						A ₂ T heavily carbonated, little or no diss. Py. Assayed for Au, Ni (ppm).
			235	240	5						A ₂ T well laminated with 2 qtz veins totalling 8" in width, little or no diss. pyrite.
			248	250	2						A ₂ T well laminated with 1 qtz veinlet containing no sulphides; last 2 inches of core has up to 3% cubic pyrite.
		END OF HOLE @ 250'	190	195	5						A ₂ T heavily carbonated, disseminated cubic pyrite (<1%).

John C. [Signature]