

Diamond Drilling



42A06NE0076 22 WHITNEY

010

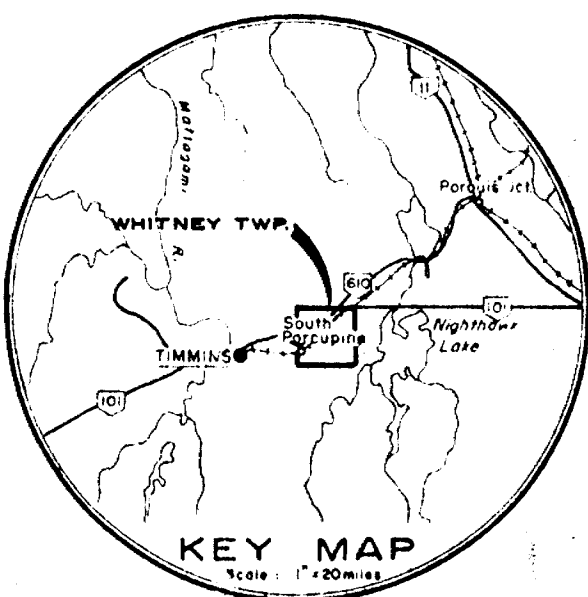
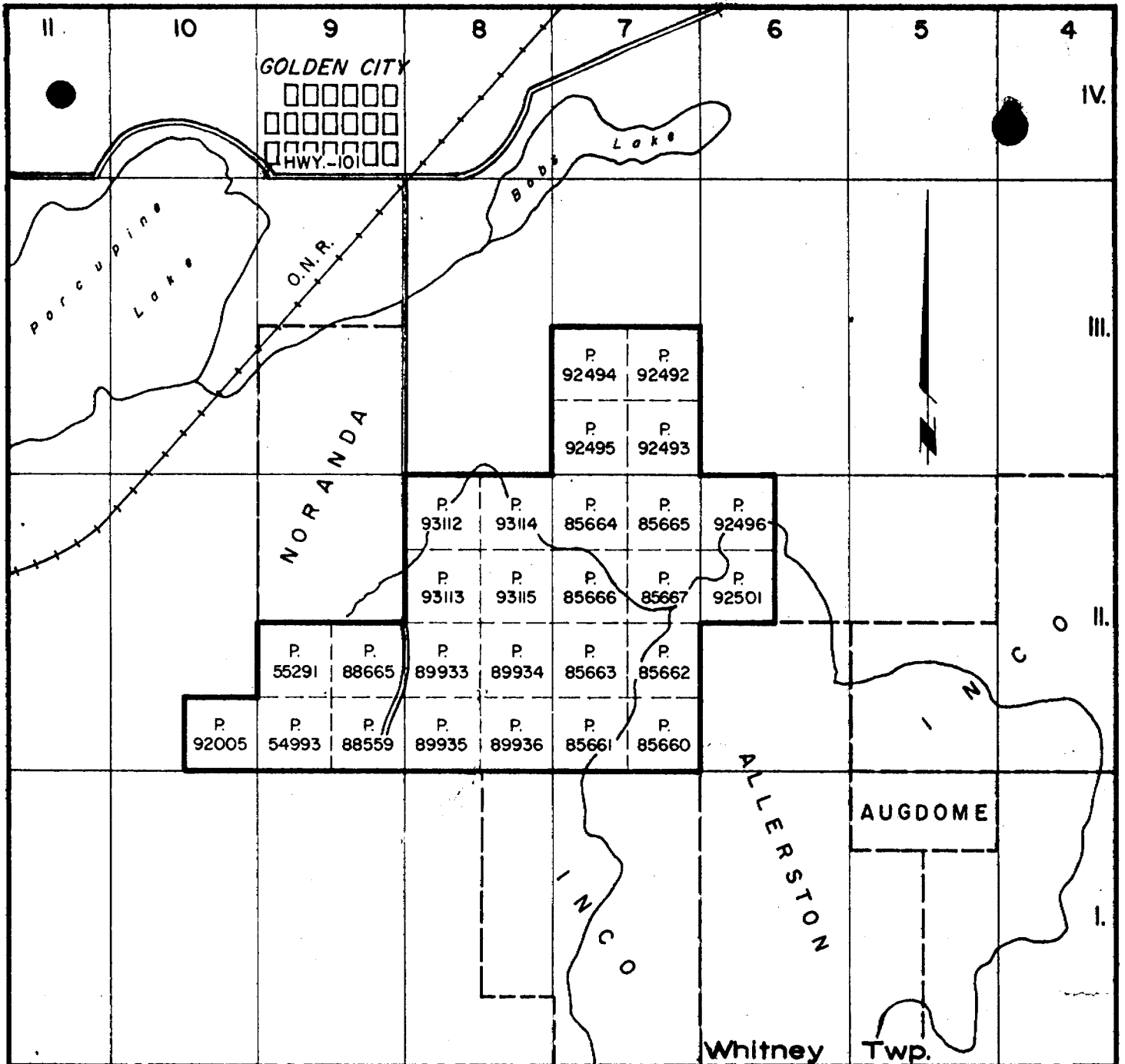
Township of WHITNEY

Report No: 22

Work performed by: Canadian Lencourt Mines

| Claim No | Hole No | Footage            | Date   | Note |
|----------|---------|--------------------|--------|------|
| P 89933  | L-1     | 128.0'             | Mar/67 |      |
|          | L-2     | 185.0'             | Mar/67 |      |
|          | L-3     | 284.0'             | Mar/67 |      |
|          | L-4     | 295.0'             | Mar/67 |      |
|          | L-5     | 110.5'             | Mar/67 |      |
|          |         | <u>5 / 1002.5'</u> |        |      |

Notes:



WATTS, GRIFFIS & McQUAT LIMITED

**CANADIAN LENCOURT MINES LIMITED**  
 — WHITNEY TOWNSHIP —  
 Porcupine Mining Division  
 PROVINCE OF ONTARIO  
**CLAIM LOCATION MAP**  
 Scale: 1" = 1/2 mile

TORONTO, ONTARIO SEPTEMBER 1967



### DIAMOND DRILL HOLE SUMMARY

COMPANY: Canadian Lencourt Mines Limited  
 PROPERTY: Whitney Township, Ontario

Hole No: L-4  
 Claim No: P 89933  
 Coords: 4 + 00 S. 26 + 00 W  
 Bearing: \_\_\_\_\_  
 Depth: 295'  
 Started: May 12, 1967  
 Drilled By: Continental Diamond Drilling Limited  
 Core Recovery: 99%

Location: \_\_\_\_\_  
 Elev: \_\_\_\_\_  
 Angle: -90°  
 Core Size: AXT  
 Completed: May 14, 1967  
 Logged By: W. B. Pelette

Survey: \_\_\_\_\_  
 Depth: \_\_\_\_\_  
 Azimuth: \_\_\_\_\_  
 Dip: \_\_\_\_\_

*Wayne Pelette*

| FROM  | TO    | DESCRIPTION  | INTERSECTION |      |        | ANALYSIS |      |  |
|-------|-------|--|--------------|------|--------|----------|------|--|
|       |       |  | FROM         | TO   | LENGTH | Au       | Ag   |  |
| 0.0   | 15.0  | Casing   |              |      |        |          |      |  |
| 15.0  | 38.0  | Quartz-sericite schist. schistosity at 90°                                     |              |      |        |          |      |  |
| 38.0  | 39.6  | Quartz-chlorite vein   |              |      |        |          |      |  |
| 39.6  | 40.9  | Banded siliceous rock with pyrite seams  | 39.6         | 40.9 | 1.3'   | Nil      | 0.22 |  |
| 40.9  | 45.0  | Same as above  | 40.9         | 45.0 | 4.1'   | 0.005    | 0.31 |  |
| 45.0  | 52.6  | Same as above with some quartz-chlorite veining                                | 45.0         | 52.6 | 7.6'   | Nil      | 0.15 |  |
| 52.6  | 54.1  | Quartz-chlorite vein   |              |      |        |          |      |  |
| 54.1  | 92.3  | Quartz-sericite schist. some chlorite sections - schistosity at 20° - 30°      |              |      |        |          |      |  |
| 92.3  | 95.2  | Chlorite schist  |              |      |        |          |      |  |
| 95.2  | 103.8 | Talc-chlorite schist, minor disseminated pyrite and magnetite                  |              |      |        |          |      |  |
| 103.8 | 109.1 | Quartz-chlorite veining  |              |      |        |          |      |  |
| 109.1 | 130.6 | Talc-carbonate rock, grey, medium grained, slightly schistose, minor magnetite |              |      |        |          |      |  |
| 130.6 | 133.2 | Lost Core  |              |      |        |          |      |  |
| 133.2 | 154.0 | Same as 109.1 to 130.6   |              |      |        |          |      |  |
| 154.0 | 197.0 | Serpentinite - medium grained, green, a few minor talc and asbestos stringers  |              |      |        |          |      |  |
| 197.0 | 205.0 | Talc-carbonate schist, some disseminated magnetite                             |              |      |        |          |      |  |
| 205.0 | 210.2 | Chlorite schist  |              |      |        |          |      |  |
| 210.2 | 295.0 | Talc-chlorite-carbonate schist   |              |      |        |          |      |  |







TOWNSHIP

MINING DIVISION  
TARIO

200 400

Septemb

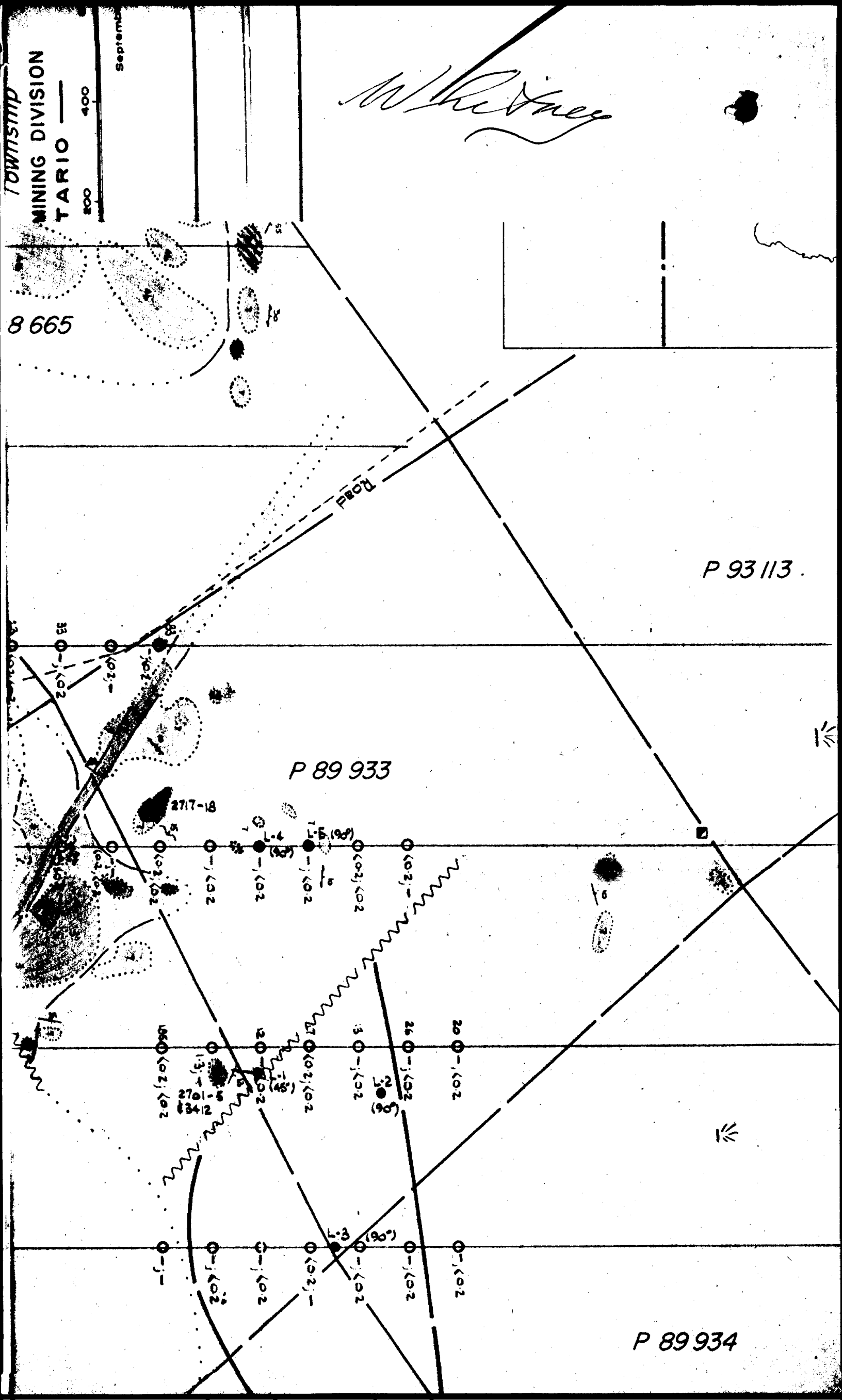
*W. Whitney*

8 665

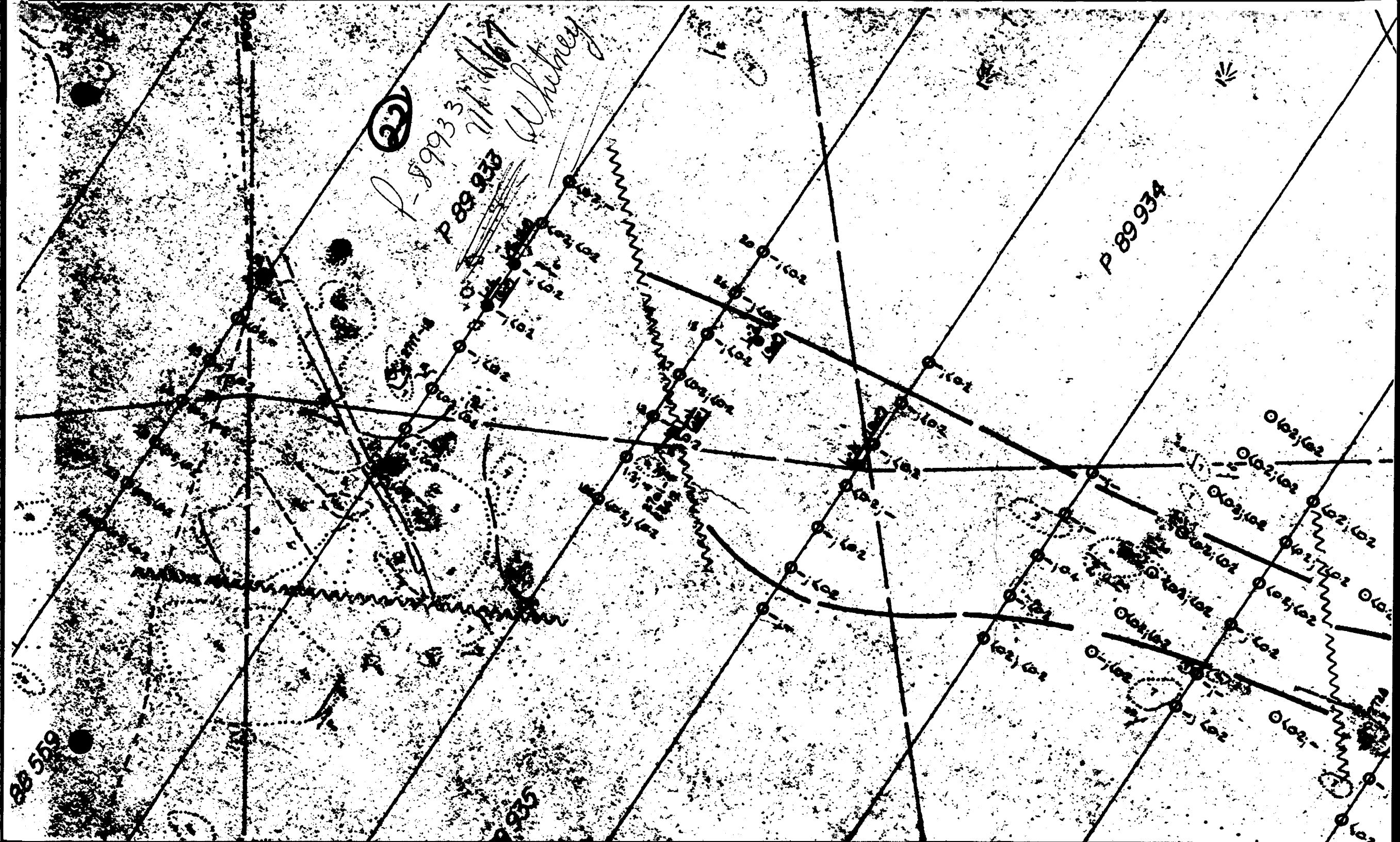
P 93 113

P 89 933

P 89 934







(22)  
P-89933  
P 89933  
Whitney

P 89934

89 559

89 933

102  
102  
102

102  
102

102  
102  
102

102

102

102

102

102

102

102

102

102

102

102

102

102

102

102

102

102

102

102

102

102

102

102

102

102

102