



42A06NE0135 2.8231 WHITNEY

010

REPORT  
ON  
GEOMAGNETIC SURVEY  
SHERIDAN CLAIMS  
BROWN McDADE OPTION

Whitney Township  
Porcupine Mining Division  
Ontario

RECEIVED

JUN 21 1985

MINING LANDS SECTION

Timmins, Ontario  
June 8, 1985

C. F. Desson

Qual → C3.1558



42A06NE0135 2.8231 WHITNEY

010C

TABLE OF CONTENTS

	<u>Page No.</u>
TITLE PAGE	
SUMMARY	1
PREVIOUS WORK	1
PROPERTY & LOCATION	1
ACCESSIBILITY	1
GEOLOGY	1
GEOMAGNETIC SURVEY	1-2
CONCLUSIONS	2
APPENDIX	
"A" Geomagnetic Map of Survey	

## SUMMARY

A geomagnetic survey was carried out to delineate the magnetic iron formation which trends through the claims from adjoining properties. The iron formation is known to host copper and gold mineralization. The iron formation(s) was delineated very adequately for further exploration.

## PREVIOUS WORK

Geophysical surveys, prospecting and trenching were carried out by previous owners; the records of which are mostly either lost and/or not filed.

## PROPERTY & LOCATION

The property is situated in the southwest quadrant of Whitney Township, Porcupine Mining Division of Ontario, and is comprised of two contiguous claims numbered P758065 and P758066.

## ACCESSIBILITY

Easy access is made via gravel road 1 km. south from the railroad crossing in South Porcupine to the northwest corner of the property.

## GEOLOGY

The claims are underlain by Archean Rocks of the Deloro Group and consist of andesites and tuffs interlayered with cherty iron formation containing iron oxides and sulphide facies.

The iron formation is known to host copper and gold mineralization. The formations strike roughly east-west and dip shallowly north in this immediate area.

## GEOMAGNETIC SURVEY

The survey was carried out using a Geometrics Proton Precession Magnetometer Model G-816 with a two metre staff for

exact repeatable ground to sensing head distance. The instrument has a digital readout and a sensitivity of 1 gamma.

Magnetic control stations were established at regular workable intervals for accurate diurnal control.

A line grid was cut, chained and picketed at 100' station intervals. Base line is NW-SE with NE-SW cross lines.

The magnetic iron formation sought for enters the property in the SE corner and appears to be offset about 400' - west side north which is corroborated by an extrapolated drag fold dictated by the results.

A second band of iron formation lies roughly 400 feet north of and parallel to the band mentioned.

#### CONCLUSIONS

The survey delineates the magnetic iron formation and offers a good target for further investigation.

Respectfully submitted,

*C. F. Desson*

C. F. Desson.





42A06NE0135 2.8231 WHITNEY

020

REPORT  
ON  
DRILLING PROGRAM  
SHERIDAN CLAIMS

Deloro Township  
Porcupine Mining Division  
Ontario

RECEIVED  
JUN 21 1985  
MINING LANDS SECTION

Timmins, Ontario  
June 8, 1985

C. F. Desson



42A06NE0135 2.8231 WHITNEY

020C

TABLE OF CONTENTS

	<u>Page No.</u>
TITLE PAGE	
SUMMARY	1
PREVIOUS WORK	1
PROPERTY & LOCATION	1
ACCESSIBILITY	1
GEOLOGY	1-2
DIAMOND DRILLING	2
CONCLUSIONS	2
APPENDICES	
"A" Drill Holes Location Plan	
"B" Receipt for Assay Charges	
"C" Drill Logs 85DE-1, DE-2 and DE-3	

## SUMMARY

Three holes were drilled as a follow-up to drilling completed in December 1984.

One hole broke through a buried scarp and was abandoned. One hole was drilled to test for an E.M. conductor and the other to complete a section across an interesting geological structure.

## PREVIOUS WORK

Geophysical surveys, prospecting, sampling and diamond drilling was carried out in previous work by the present owners. Cross section drilling was performed prior to 1940.

## PROPERTY AND LOCATION

The property is situated in the northeast quadrant of Deloro Township, Porcupine Mining Division of Ontario, and is comprised of 13 contiguous claims numbered as follows: P634559, 688664, 688665, 688677, 688678, 688679, 688688, 688689, 688690, 688698, 688699, 764451 and 764452.

## ACCESSIBILITY

Access is made via the Dome Tailings Dam all weather gravel road which enters the northeast corner of the property. The road originates from the Timmins "back road" through the Dome Extension Townsite. The gated road is privately owned by Dome Mines Limited.

## GEOLOGY

The property is underlain by northeast trending Archean Rocks of the Deloro Group. The assemblage progressing from south to north are mafic and intermediate volcanics (some carbonatized) to acid and intermediate sericite-carbonate schists (tuffs), and crystal tuff interbedded with highly siliceous iron formation, plus slate, argillite and serpentinized volcanics and schists occupied by the Porcupine Destor Fault. Minor small irregular intrusions of quartz porphyry occur in the northeast part of the property. A graphitic tuff band with

thin seams of pyrite was cut in one drill hole between two parallel bands of iron formation.

A quartz-talc-chlorite schist zone intersected in drilling is quite similar to the Porcupine Destor Fault schists. The normal attitude of the structures in this area is roughly N70°E with dips vertical to 50°NW. The schist zone noted above strikes N30°E and dips NW. A quartz porphyry plug immediately northeast of this zone appears to either offset this schist west side south, or causes a flexure in it.

#### DIAMOND DRILLING

Three holes were drilled to complete the program of conductor and structure tests.

Hole 85DE-1: drilled to test for an E.M. conductor not reached in previous drilling. The hole broke through a buried scarp into overburden of 40' and was abandoned.

Hole 85DE-2: was set back from 85DE-1 above and drilled to 150 feet. A porous zone cut from 76' to 90' possibly represents the weak conductor.

Hole 85DE-3: was drilled to complete the section of quartz-talc-chlorite schist cut in previous drilling. The zone was completely sectioned, but carried no gold mineralization.

#### CONCLUSIONS

Nothing of economic importance was detected in this program.

Respectfully submitted,

*C. F. Desson*

C. F. Desson, P.Eng.





DIEPDAUME MINES LIMITED

P.O. BOX 1392  
TIMMINS, ONT.  
P4N 7N2

ORDER NO.	DEPT.	DATE	June 3, 1985	
SOLD TO Sheridan Geophysics Ltd		SHIP TO Sheridan Geophysics		
ADDRESS 1404-7 King St. E. Toronto, ON		ADDRESS 1404-7 King St. E. Toronto, ON		
WHEN SHIP ASAP	CARRIER Pickup	TERMS CASH	SALES REP.	
20 Assays	Gold @ \$10.25 includes processing, handling and storage		205.00	
<i>Paid in full. Inv.</i>				
140796	SIGNATURE <i>G. W. Reschke</i>	LIC. NO.	TOTAL	205.00

140796

SIGNATURE *G. W. Reschke*

LIC. NO.

TOTAL 205.00

D152

APP '85

# DIAMOND DRILL RECORD

NAME OF PROPERTY SHERIDAN GEOPHYSICS LTD  
 HOLE NO. 85DE-1 LENGTH 40'  
 LOCATION Claim P688677 DELORO TP. ONTARIO  
 LATITUDE 14+50N DEPARTURE 49+00E  
 ELEVATION Surface AZIMUTH 140° DIP -45°  
 STARTED May 9/85 FINISHED May 13/85

FOOTAGE	DIP

FOOTAGE		DESCRIPTION
FROM	TO	
0	40.0	<p>ANDESITE: fine grained massive. Scattered areas white carbonate-filled spherules. Widely scattered large pillows with fine grained, dark green, chloritic selvages. Abundant elongate chloritic "eyes" up to 2mm throughout. Scant blebs quartz-carbonate plus few seams to 1/2".</p> <p>At 10.8: 3" whitish translucent quartz with minor chlorite and epidote walls.</p> <p>At 40: Hole broke through a buried scarp into overburden.</p> <p>Hole abandoned</p> <p>40' End of Hole</p>

# DIAMOND DRILL RECORD

85DE-1

HOLE NO. \_\_\_\_\_ SHEET NO. 1

NAME OF PROPERTY SHERIDAN GEOPHYSICS LTD  
 HOLE NO. 85DE-1 LENGTH 40'  
 LOCATION Claim P688677 DELORO TP. ONTARIO  
 LATITUDE 14+50N DEPARTURE 49+00E  
 ELEVATION Surface AZIMUTH 140° DIP -45°  
 STARTED May 9/85 FINISHED May 13/85

FOOTAGE	DIP	AZIMUTH	FOOTAGE	DIP	AZIMUTH

REMARKS Hole broke through buried scarp into overburden and abandoned.  
 CORE SIZE: AX 1 3/16"

LOGGED BY C. F. Desson  
Chloro

FOOTAGE		DESCRIPTION	SAMPLE				ASSAYS				
FROM	TO		NO.	% SULPHIDES	FOOTAGE			%	%	OZ/TON	OZ/TON
					FROM	TO	TOTAL				
0	40.0	<p>ANDESITE: fine grained massive. Scattered areas white carbonat-filled spherules. Widely scattered large pillows with fine grained, dark green, chloritic selvages. Abundant elongate chloritic "eyes" up to 2mm throughout. Scant blebs quartz-carbonate plus few seams to 1/2".</p> <p>At 10.8: 3" whitish translucent quartz with minor chlorite and epidote walls.</p> <p>At 40: Hole broke through a buried scarp into overburden.</p> <p>Hole abandoned.</p> <p>40' End of Hole</p>									

# DIAMOND DRILL RECORD

NAME OF PROPERTY SHERIDAN GEOPHYSICS LTD  
 HOLE NO. 85DE-2 LENGTH 149  
 LOCATION Claim P 688677 Deloro Tp. Ontario  
 LATITUDE 14+90N DEPARTURE 48+75E  
 ELEVATION Surface AZIMUTH 140° DIP -45°  
 STARTED May 14/85 FINISHED May 17/85

FOOTAGE	DIP	AZIMUTH	FOOTAGE	DIP	AZIMUTH

85DE-2  
 HOLE NO. \_\_\_\_\_ SHEET NO. 1  
 REMARKS Set back to  
cut below 85DE-1.  
CORE SIZE: AX 1 3/16"  
 LOGGED BY C. F. Dession  
Ch. Dession

FOOTAGE		DESCRIPTION	SAMPLE				ASSAYS			
FROM	TO		NO.	% SULPHIDES	FOOTAGE		%	%	OZ/TON	OZ/TON
					FROM	TO				
0	5.0	CASING								
5.0	150.0	ANDESITE: fine grained, massive. Scattered areas with white carbonate filled spherules. Widely scattered large pillows with fine grained, dark green, chlorite selvages. Abundant elongate chlorite "eyes" up to 2mm throughout. Few thin seams carbonate up to 1/2" with yellowish epidote CA 80'								
		76.0-90.0: porous leached area with irregular carbonate.								
		At 141.0-142.0; 143.7-145.8; 146.1-149.1: Lost Core								
		150.0 End of Hole								

# DIAMOND DRILL RECORD

NAME OF PROPERTY SHERIDAN GEOPHYSICS LIMITED  
 HOLE NO. 85DE-3 LENGTH 150'  
 LOCATION Claim P689690 Deloro Tp. Ontario  
 LATITUDE 3410S DEPARTURE 26+40E  
 ELEVATION Surface AZIMUTH 320° DIP -45°  
 STARTED May 22/85 FINISHED May 30/85

FOOTAGE	DIP	AZIMUTH	FOOTAGE	DIP	AZIMUTH

HOLE NO. 85DE-3 SHEET NO. 1 of 2

REMARKS Out of zone at 90.1  
CORE SIZE: AX 1 3/16"

LOGGED BY C. F. Dession  
C. Dession

FOOTAGE		DESCRIPTION	SAMPLE				ASSAYS				
FROM	TO		NO.	% SULPHIDES	FOOTAGE		%	%	OZ/TON	OZ/TON	
					FROM	TO	TOTAL				
0	1.0	CASING									
1.0	81.0	QUARTZ-CARBONATE-CHLORITIC TALC SCHIST. Abundant qtz-carbin stringers and blebs. Scant very fine disseminated pyrite throughout plus few coarser blebs. CA 35°-45° 1.0-17.0: 3% qtz-carb. 3.2-3.6: quartz porphyry, fine grained, pale grey, massive 17.0-81.0: 35% qtz-carb up to 2" plus chlorite mix									
81.0	84.0	TALC-CHLORITE SCHIST. Dark green									
84.0	90.1	Qtz-carb-Chlorite-Talc Schist as at start. Paler greenish grey.									
90.1	100.4	QUARTZ PORPHYRY: pale grey, fine grained, massive. Few specks pyrite.									
100.4	111.9	TALC-CHLORITE SCHIST: 4% carbonate in seams and blebs. Very fine interstitial magnetite.									
111.9	150.0	SERPENTINIZED VOLCANICS: highly altered with medium grey massive sections bordering on peridotite. 4% white carbonate in seams up to 1". Heavy streaks chlorite in the altered areas. Few specks pyrite and pyroxenite. Fine interstitial magnetite									

# DIAMOND DRILL RECORD

NAME OF PROPERTY \_\_\_\_\_  
 HOLE NO. \_\_\_\_\_ LENGTH \_\_\_\_\_  
 LOCATION \_\_\_\_\_  
 LATITUDE \_\_\_\_\_ DEPARTURE \_\_\_\_\_  
 ELEVATION \_\_\_\_\_ AZIMUTH \_\_\_\_\_ DIP \_\_\_\_\_  
 STARTED \_\_\_\_\_ FINISHED \_\_\_\_\_

FOOTAGE	DIP	AZIMUTH	FOOTAGE	DIP	AZIMUTH

HOLE NO. 85DE-3 SHEET NO. 2022

REMARKS \_\_\_\_\_

LOGGED BY Chlessor

FOOTAGE		DESCRIPTION	SAMPLE				ASSAYS			
FROM	TO		NO.	% SULPHIDES	FOOTAGE		%	%	OZ/TON	OZ/TON
					FROM	TO				
111.9	150.0	continued 111.9-115.0: grey, medium grained, talcose or serpentined. 115.0-121.5: Talc-chlorite schist 121.5-135.0: as at 111.9 but harder, less altered 135.0-136.0: as at 115.0 136.0-139.8: med. grey, olivine rich. borders on gabbro 139.8-150.0: as at start with local talc schist sections 150.0 End of Hole								

SAMPLES RECORD  
D.D.H. 85 DE-3

SAMPLE NO.	FOOTAGES			DESCRIPTION	ASSAYS		
	FROM	TO	WIDTH		02% Fe	Cu 1% Fe	
1595	1.0	5.0	4.0	3% gtz-carb. Specks pyrite	Nil		
1596	5.0	10.0	5.0	3% gtz-carb. Specks pyrite	Nil		
1597	10.0	15.0	5.0	3% " " " "	Nil		
1598	15.0	20.0	5.0	8% " " " " includes 0.4' gtz porphy	Nil		
1599	20.0	25.0	5.0	35% " " Specks pyr	Nil		
1600	25.0	30.0	5.0	" " " "	Nil		
1601	30.0	35.0	5.0	" " " "	Nil		
1602	35.0	40.0	5.0	" " " "	Nil		
1603	40.0	45.0	5.0	" " " "	Nil		
1604	45.0	50.0	5.0	" " " "	Nil		
1605	50.0	55.0	5.0	" " " "	Nil		
1606	55.0	60.0	5.0	" " " "	Nil		
1607	60.0	65.0	5.0	" " " "	Nil		
1608	65.0	70.0	5.0	" " " "	Nil		
1609	70.0	75.0	5.0	" " " "	Nil		
1610	75.0	81.0	6.0	" " " "	Nil		
1611	81.0	84.0	3.0	Talc Schist	Nil		
1612	84.0	90.1	6.1	10% gtz-carb.	Nil		
1613	90.1	95.0	4.9	Quartz Porphyry. Specks pyrite	Nil		
1614	95.0	100.0	5.0	" " " "	Nil		

*Cullen*







Diepdaume Mines Limited  
Box 1392  
Timmins, Ontario P4N 7N2  
June 20, 1985

Ministry of Natural Resources  
Room 6643  
Whitney Block  
Queen's Park  
Toronto, Ontario M7A 1W3

Attention: S. E. Yundt, Director  
Land Management Branch

Enclosed are the following reports for  
Assessment Work filed previously

1. Report on Drilling Program, Deloro Tp.
2. Geomagnetic Survey, Whitney Tp.

Both townships are in the Porcupine Mining Division  
of Ontario.

Yours truly

*C. F. Desjardis*

RECEIVED C. F. Desjardis

JUN 20 1985

MINING LANDS SECTION

**REGISTERED**

June 18, 1985

Report of Work #154

J.P. Sheridan  
"Brown-McDade"  
Suite 1404  
7 King Street East  
Toronto, Ontario  
M5C 1A2

Dear Sir:

RE: Mining Claims P 758065-66 in the  
Township of Whitney

---

I have not received the reports and maps (in duplicate)  
for the Magnetometer Survey on the above-mentioned claims.

As the assessment "Report of Work" was recorded by the  
Mining Recorder on April 29, 1985 the 60 day period  
allowed by Section 77 of the Mining Act for the submission  
of the technical reports and maps to this office will  
expire on June 28, 1985.

If the material is not submitted to this office by June 28,  
1985. I will have no alternative but to instruct the Mining  
Recorder to delete the work credits from the claim record  
sheets.

For further information, please contact Mr. Arthur Barr  
at (416)965-4888.

Yours sincerely,

S.E. Yundt  
Director  
Land Management Branch

Whitney Block, Room 6643  
Queen's Park  
Toronto, Ontario  
M7A 1W3  
Phone:(416)965-4888

A. Barr:mc  
cc: Mining Recorder  
Timmins, Ontario

cc: C.F. Dession  
Box 1392  
Timmins, Ontario  
P4N 7N2

Mining Lands Section

File No 28231

Control Sheet

TYPE OF SURVEY  GEOPHYSICAL

GEOLOGICAL

GEOCHEMICAL

EXPENDITURE

MINING LANDS COMMENTS:

---

---

---

---

---

---

---

---

---

---

*Lpl.*

*LD*

*Dancy*

Signature of Assessor

*18/7/85*

Date

MAP SYMBOLOLOGY

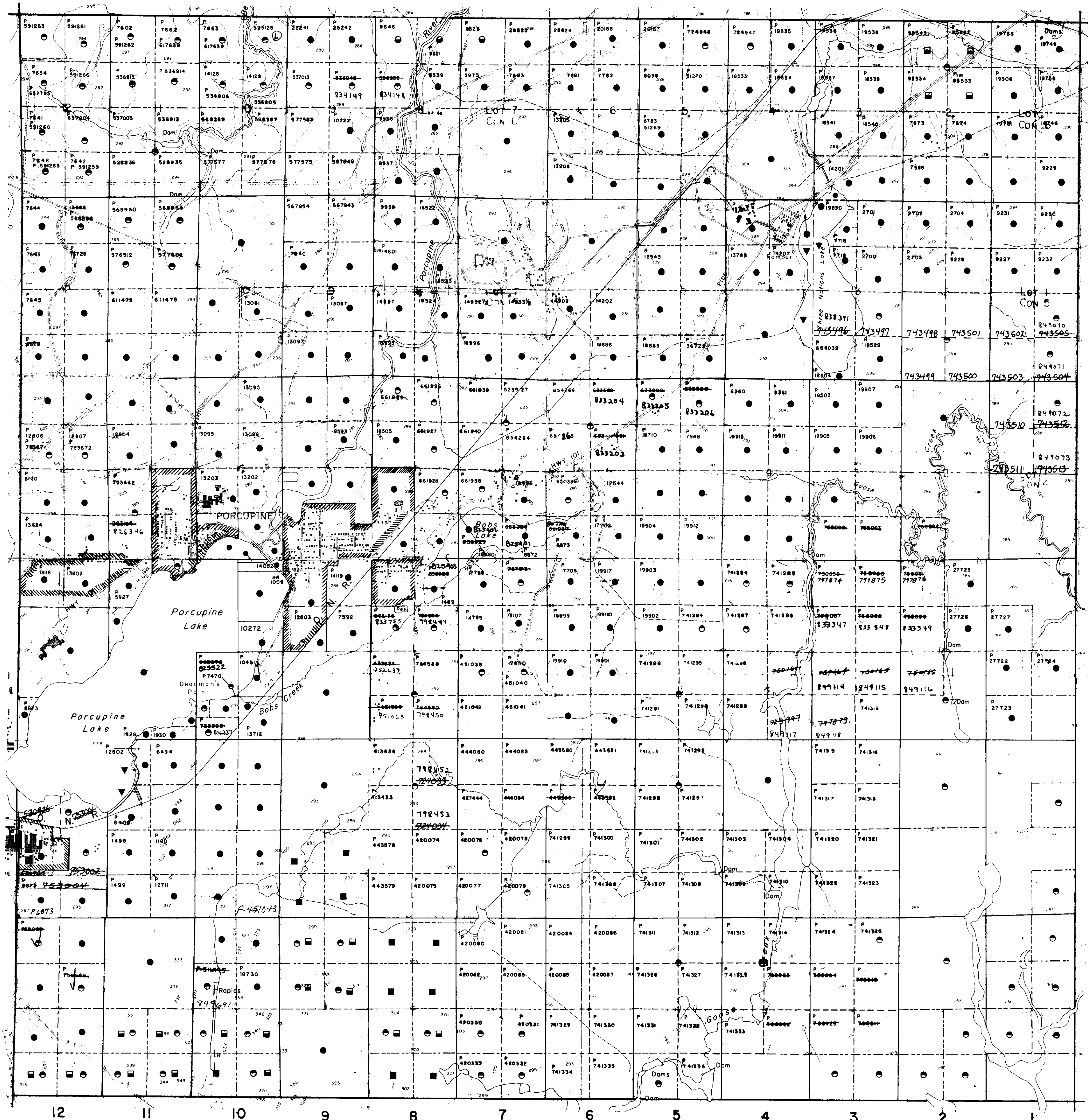
Aerial Cableway	Pipeline (above ground)
Boundary	Railroad
International	Single Track
Interprovincial	Double Track
District, Township	Abandoned
Indian Reserve	Turbine
Approximate	Road
Lot, Concession	Highway, County
Approximate	Township
Port Boundary	Access (road of doubtful
Bridge	width of right-of-way)
Rock, Railroad	Trail, Back Road
Building	(outage area)
Chimney	Rapids
Cliff, Pit, Pile	Double line river
Contours	with multiple rapids
Interpreted	Reservoir
Approximate	River, Stream, Canal
Depression	Approximate
Control Points	horizontal
Horizontal	vertical
Vertical	Culvert
Horizontal	Falls
Vertical	Double line river
Culvert	Fence, Hedge, Wall
Falls	Feature Outline
Double line river	(Construction features,
Fence, Hedge, Wall	etc.)
Feature Outline	Flooded Land
(Construction features,	Lock
etc.)	Marsh or Swamp
Flooded Land	Mast
Lock	Mine Head Frame
Marsh or Swamp	Outcrop
Mast	
Mine Head Frame	
Outcrop	

AREAS WITHDRAWN FROM DISPOSITION

- M.R.O. - MINING RIGHTS ONLY
- S.R.O. - SURFACE RIGHTS ONLY
- M.S. - MINING AND SURFACE RIGHTS

Description	Order No.	Date	Disposition	File

HOYLE TWP. G-3987



SHAW TWP. G-3999

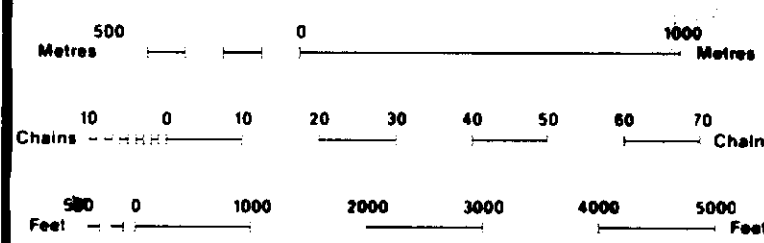
LEGEND

HIGHWAY AND ROUTE No.	
OTHER ROADS	
TRAILS	
SURVEYED LINES:	
TOWNSHIPS, BASE LINES, ETC.	
LOTS, MINING CLAIMS, PARCELS, ETC.	
UNSURVEYED LINES:	
LOT LINES	
PARCEL BOUNDARY	
MINING CLAIMS ETC.	
RAILWAY AND RIGHT OF WAY	
UTILITY LINES	
NON-PERENNIAL STREAM	
FLOODING OR FLOODING RIGHTS	
SUBDIVISION OR COMPOSITE PLAN	
RESERVATIONS	
ORIGINAL SHORELINE	
MARSH OR MUSKEG	
MINES	
TRAVERSE MONUMENT	

DISPOSITION OF CROWN LANDS

TYPE OF DOCUMENT	SYMBOL
PATENT, SURFACE & MINING RIGHTS	
SURFACE RIGHTS ONLY	
MINING RIGHTS ONLY	
LEASE, SURFACE & MINING RIGHTS	
SURFACE RIGHTS ONLY	
MINING RIGHTS ONLY	
LICENCE OF OCCUPATION	
ORDER-IN-COUNCIL	
RESERVATION	
CANCELLED	
SAND & GRAVEL	

NOTE: MINING RIGHTS IN PARCELS PATENTED PRIOR TO MAY 6, 1912, VESTED IN ORIGINAL PATENTEE BY THE PUBLIC LANDS ACT, R.S.O. 1970, CHAP. 190, SEC. 43, SUBSEC. 1.



SCALE 1:20 000

NOTES

TOWNSHIP  
**WHITNEY**  
 M.N.R. ADMINISTRATIVE DISTRICT  
**TIMMINS**  
 MINING DIVISION  
**PORCUPINE**  
 LAND TITLES / REGISTRY DIVISION  
**COCHRANE**



DATE: FEBRUARY 1984

Number: G-3975

Received March 15/84

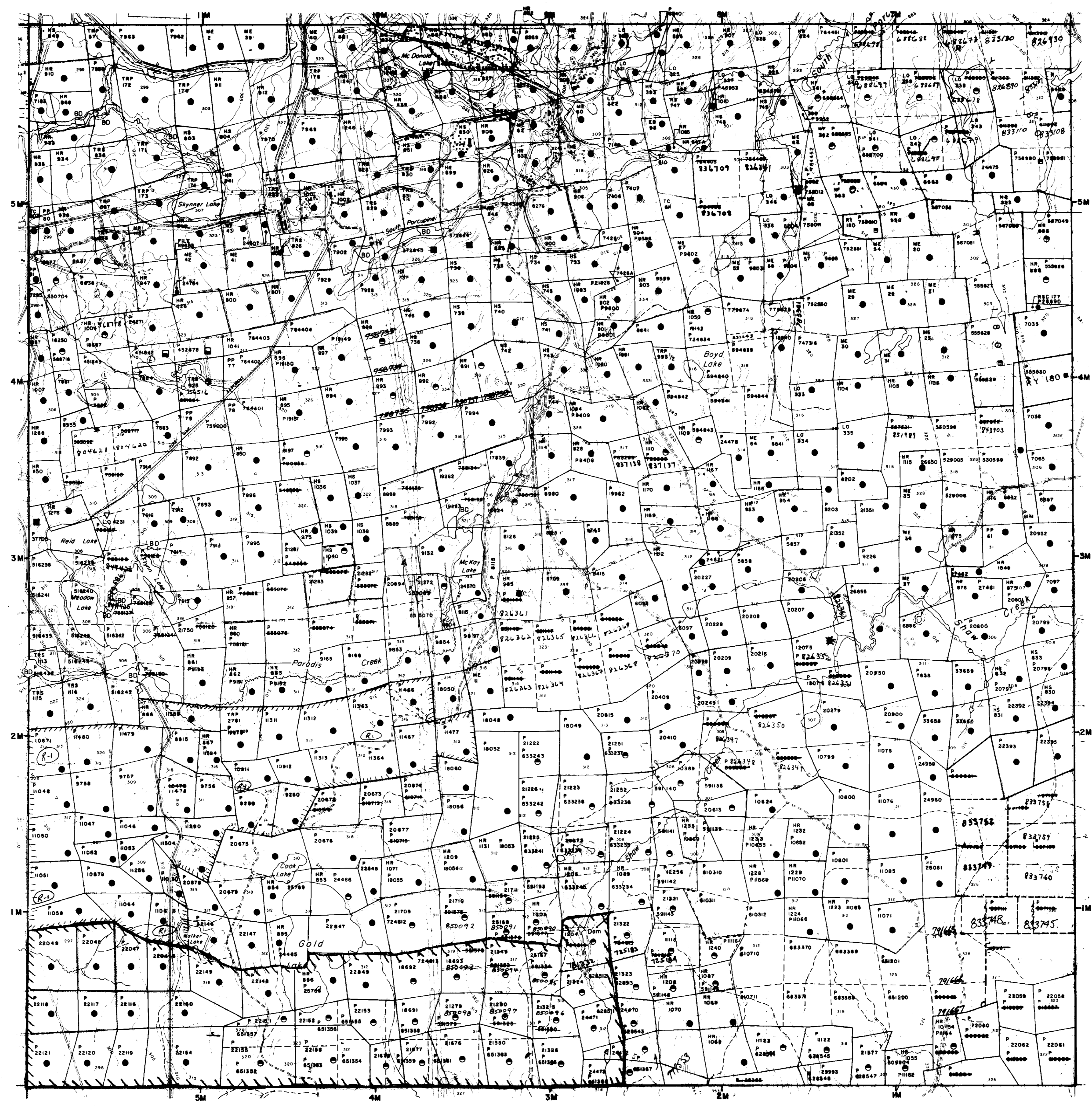
TISDALE TWP. G-3976

**LEGEND**

Highway and Route No.	Other Roads	Trails	Surveyed Lines	Township, Base Lines, Etc.	Lots, Mining Claims, Parcels, Etc.
Unsurveyed Lines	Lot Lines	Parcel Boundary	Mining Claims Etc.	Railway and Right of Way	Utility Lines
Non-perennial Stream	Flooding or Flooding Rights	Subdivision or Composite Plan	Reservations	Original Shoreline	Marsh or Muskog
Mines	Mines	Mines	Mines	Mines	Mines
Traverse Monument					

**AREAS WITHDRAWN FROM DISPOSITION**

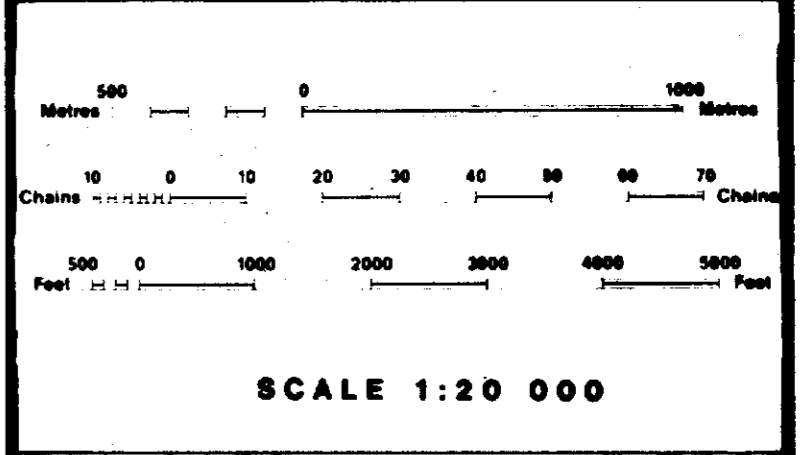
M.R.O. - MINING RIGHTS ONLY	S.R.O. - SURFACE RIGHTS ONLY	M.+S. - MINING AND SURFACE RIGHTS		
Chart/Section	Order No.	Date	Disposition	File



**DISPOSITION OF CROWN LANDS**

TYPE OF DOCUMENT	SYMBOL
PATENT, SURFACE & MINING RIGHTS	●
SURFACE RIGHTS ONLY	○
MINING RIGHTS ONLY	○
LEASE, SURFACE & MINING RIGHTS	■
SURFACE RIGHTS ONLY	■
MINING RIGHTS ONLY	■
LICENCE OF OCCUPATION	○
ORDER-IN-COUNCIL	OC
RESERVATION	○
CANCELLED	○
SAND & GRAVEL	○

NOTE: MINING RIGHTS IN PARCELS PATENTED PRIOR TO MAY 6, 1912, VESTED IN ORIGINAL PATENTEES BY THE PUBLIC LANDS ACT, R.S.O. 1970, CHAP. 300, SEC. 63, SUBSEC. 1.



NOTES

REGISTERED PLAN OF SUBDIVISION

*SITE PREPARATION MNR.*

*R-1 - Mining Rights withdrawn NW 1/4*

TOWNSHIP  
**DELORO**

M.N.R. ADMINISTRATIVE DISTRICT  
**TIMMINS**

MINING DIVISION  
**PORCUPINE**

LAND TITLES / REGISTRY DIVISION  
**COCHRANE**

Ministry of Natural Resources  
Land Management Branch

Date: FEBRUARY 1984  
Number: **G-3993**

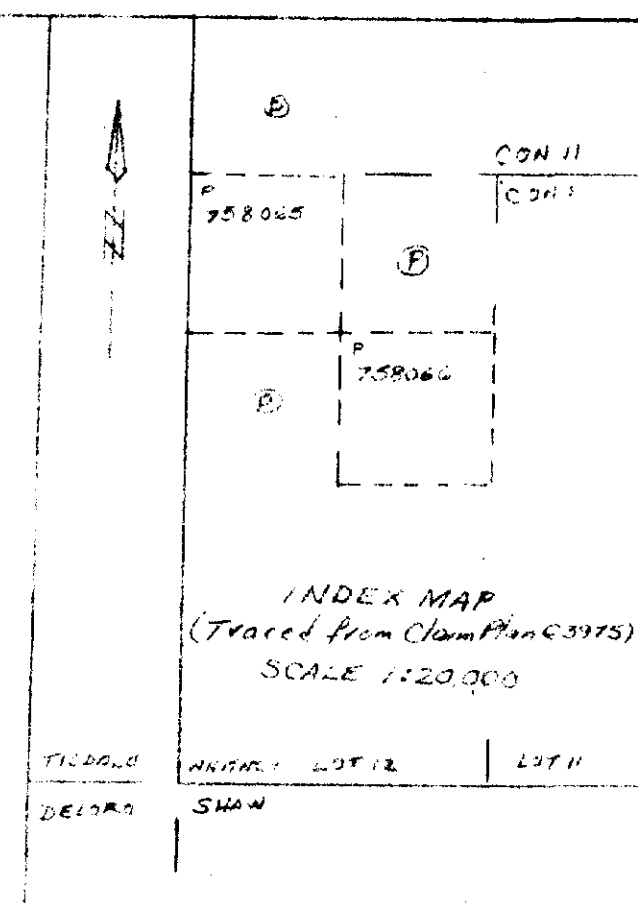
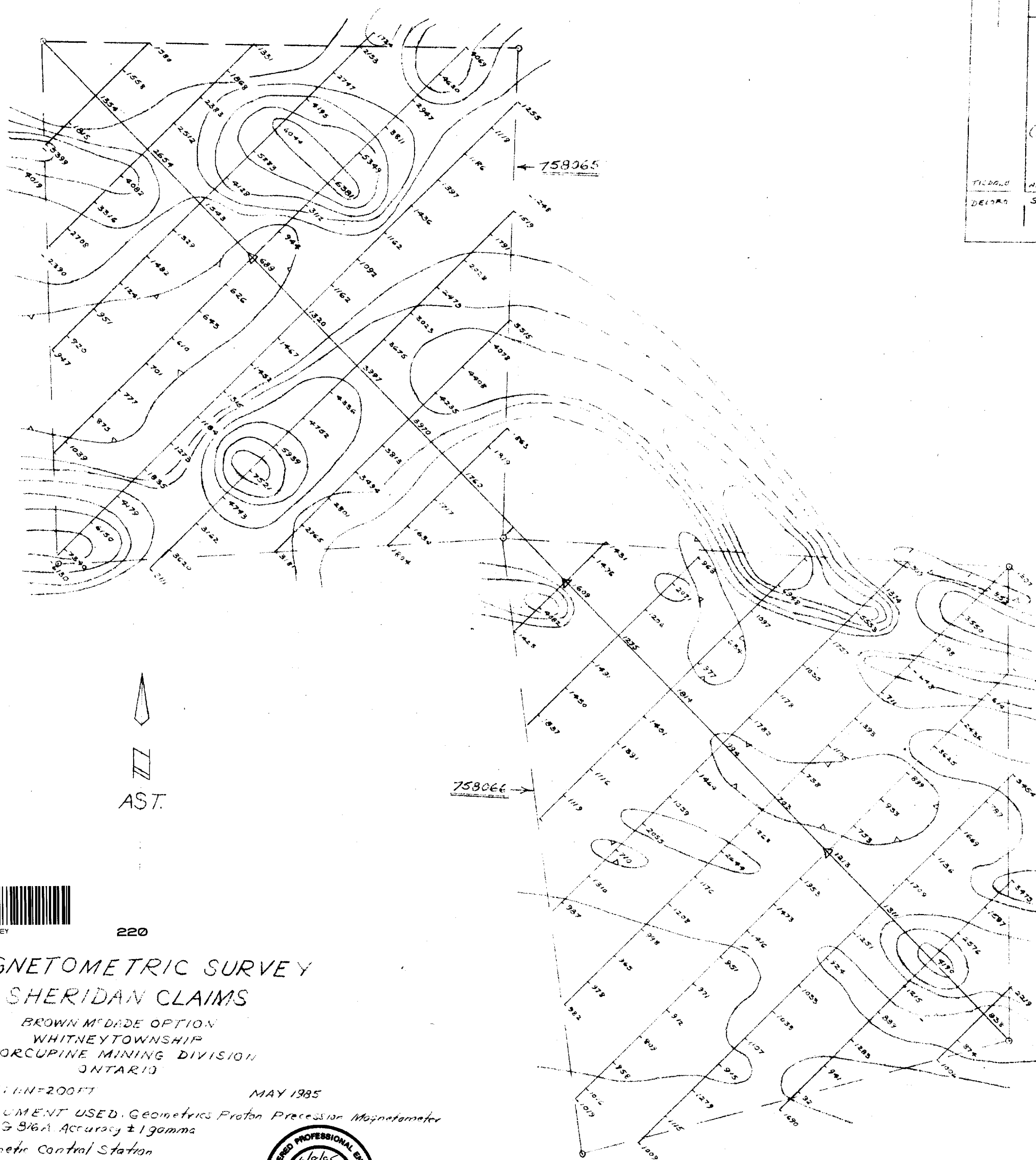
*Received March 15/84*

DE LORO TWP

OGDEN TWP. G-3979

SHAW TWP. G-3999

ADAMS TWP. G-



AST.

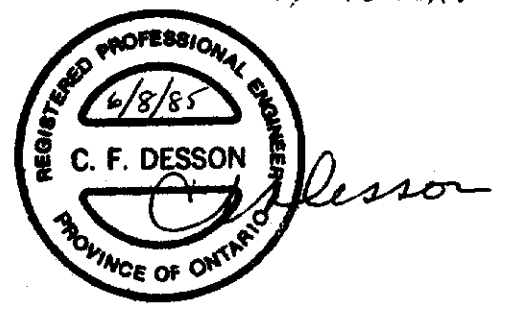


220

# MAGNETOMETRIC SURVEY SHERIDAN CLAIMS

BROWN M<sup>c</sup>DADE OPTION  
WHITNEY TOWNSHIP  
PORCUPINE MINING DIVISION  
ONTARIO

SCALE: 1:100,000  
MAY 1985  
INSTRUMENT USED: Geometrics Proton Precession Magnetometer  
Model G 916A Accuracy  $\pm 1$  gamma  
 ▲ Magnetic Control Station  
 ○ Claim Post, Line  
 758065 Claim Number  
 --- Contour Line, 1000 gammas  
 --- " " " " (extrapolated)



2,8231  
Note: 53,000 gammas deducted from all readings with corrections.

24E

32E

40E

48E

56E

TISDALE TP  
DELORO TP

P688677

P688678

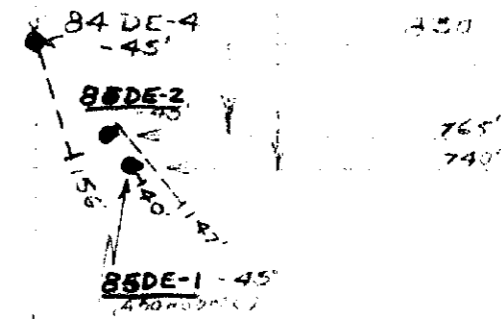
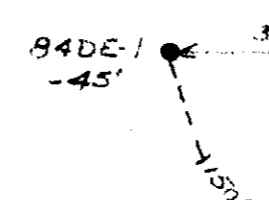
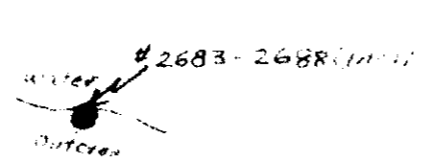
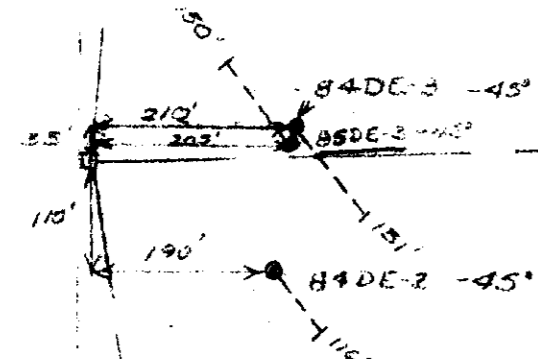
P688689

P688679

P688690

BASE LINE 040

AS E



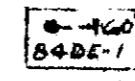
*C. F. Desson*

LOCATION PLAN  
DRILL HOLES  
AND  
SURFACE SAMPLES  
SHERIDAN CLAIMS

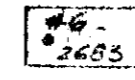
DELORO TOWNSHIP  
PORCUPINE MINING DIVISION  
ONTARIO

SCALE: 1"=200' DEC. 20, 1984  
UPDATED MAY 1985 \*

SYMBOLS



Drill Hole direction, depth.



Surface Sample location and number.

