

DIAMOND DRILLING



42A06NE0303 29 SHAW

010

TOWNSHIP: Shaw

REPORT No.: 29

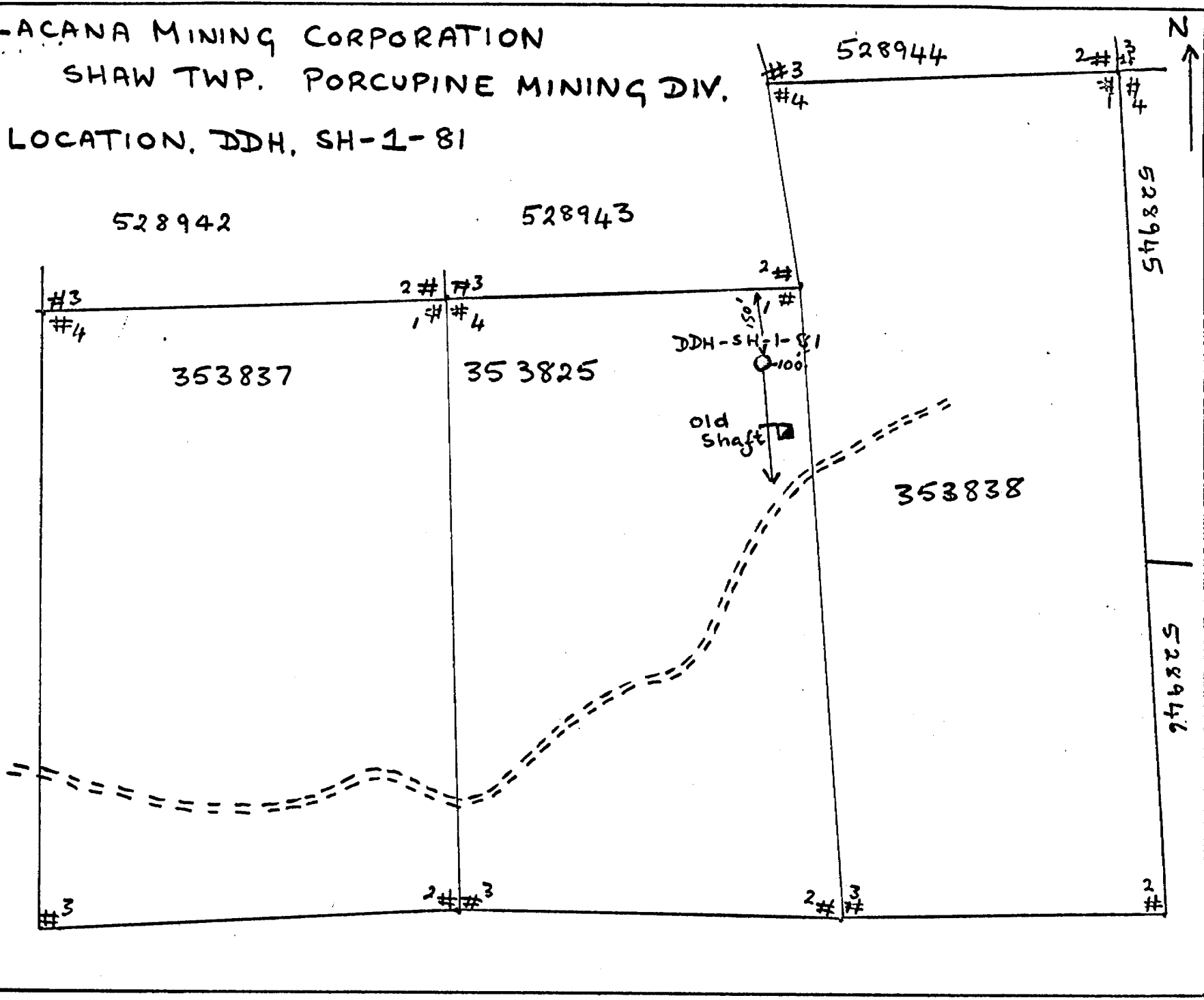
WORK PERFORMED BY: Lacana Mining Corp.

<u>CLAIM No.</u>	<u>HOLE No.</u>	<u>FOOTAGE</u>	<u>DATE</u>	<u>NOTE</u>
P 353825	SH-1-81	550.0	Mar/81	(1) (3)
	SH-2-81	400.0	Mar/81	(2) (3)
	SH- <del>4</del> -81	357.0	Apr/81	(2) (3)

NOTES: (1) #90 - 81  
(3) O.M.E.P. Submittal: OM 46-PE42-C-80

LACANA MINING CORPORATION  
SHAW TWP. PORCUPINE MINING DIV.

LOCATION, DDH, SH-1-81



*R. Kelly*  
31/3/81

528942

528943

353825

353838

353837

220'

450'

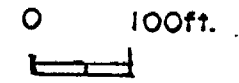
180'

SH-4-81

SH-2-81

2# #3  
1# #4

2#  
1#



**LACANA**

Location Map D.D.H.'s 28&4

SHAW TWP. PORCUPINE MD.

# 138-81

**LACANA MINING CORPORATION**

Box 354, Suite 3701, Royal Trust Tower TD Centre, Toronto, Canada M5K 1K7

*R. C. Welby*  
23/4/81

















CORE SAMPLES

DDH - SH - 1 - 81

SAMPLE NO	DEPTH		ASSAYS	
	FROM	TO	Au ppb	Au oz ton.
22101	15.0	17.0	5	
2	20.0	20.4	11	
3	22.0	22.3	10	
4	75.0	76.3	14	
5	80.9	81.5	4	
6	88.2	88.8	7	
7	90.0	90.8	5	
8	91.6	92.6	5	
9	96.8	97.9	3	
22110	98.5	99.5	1	
1	100.4	101.4	7	
2	103.7	104.3	1	
3	112.5	114.3	4	
4	124.5	125.7	15	
5	128.6	129.6	4	
6	140.0	143.0	5	
7	143.0	146.6	3	
8	152.5	155.0	3	
9	174.0	174.6	10	
22120	186.5	187.2	4	
1	237.4	237.9	4	
2	244.5	248.0	3	
3	248.0	251.0	3	
4	258.0	259.0	1	
5	268.0	270.0	1	
6	270.0	272.4	1	
7	296.0	297.6	1	
8	374.0	374.7	15	
9	384.0	384.5	1	
22130	397.6	398.8	12	
1	403.7	404.5	ND*	(NOT DETERMINED)
2	433.5	433.5	3	
3	446.2	444.2	7	
4	451.0	452.5	1	
5	454.2	457.0	1	
6	471.0	474.0	1	
7	478.0	478.0	1	

← RE SAMPLES

DDH SH-1-81

(CONT)

SAMPLE NO.	DEPTH		ASSAYS Au oz. ton.
	FROM	TO	
22280	251.0	254.0	TR
1	254.0	258.0	TR
2	272.4	275.4	TR
3	293.0	293.5	0.025
4	298.0	299.0	TR
5	299.0	292.7	TR
6	304.7	305.7	TR
7	302.7	296.0	TR
8	325.5	327.0	TR
9	357.0	358.0	TR
22290	435.0	435.8	TR
1	440.0	441.0	TR

19

HOLE SH-2-81

PAGE 1

DRILL HOLE LOG

PROPERTY FLINT ROCK - SHAN

DEP GRID 2+80W

DISTRICT SHAN TWP

ELEV \_\_\_\_\_

LOCATION C-41M 353525

BEARING 250° AZ

DIP 50°

OBJECTIVE TEST RESULTS OF PREVIOUS DRILLING

LENGTH 400.0 FEET

COMMENCED 30/3/81

ETCH AT 60° at 400'

COMPLETED 31/3/81

TRUE DIP 51° at 400'

LAT GRID 5+10S

HOR. COMPONENT 25.5 FT

VER. COMPONENT 310 FT

TOTAL RECOVERY 100%

OTHER SURVEYS MAGNETIC

DRILLED BY NOREX DRILLING LTD SOUTH PORCUPINE

LOGGED BY RONALD C WELLS BSC

FOOTAGE		DESCRIPTION	SAMPLE NUMBER	LENGTH FT.	ANALYSES				Au	
FROM	TO				%	%	%	%	OZ/t	OZ/t
C	9.0	CASING - BOUNDARY OVERBURDEN	120	290-320						
50	132.0	FELSIC TUFFS WITH IRON FORMATION A varied sequence consisting of banded tuffs, tuff breccias and iron formation. The tuffs are grey, greenish-grey to yellowish in colour and are carbonated to varying degree. Rusty oxidized carbonate zones occur locally in the tuffs close to the iron formation. The tuffs are cherty and hard. Both sulfide and oxide zones of iron formation occur within the tuff sequence. There is no sharp stratigraphic division between the two facies as both magnetite and pyrite-pyrrhotite beds may be interlayered.	121	340-352						TR
			058	360-372						TR
			122	350-430						TR
			123	430-470						TR
			059	470-483						TR
			124	485-490						TR
			125	490-535						TR
			126	535-585						TR
			127	585-630						TR
			060	630-655						TR
			128	667-690						TR
			139	690-730						.01
			140	730-770						.005
			141	770-795						TR
			129	795-820						TR
			130	820-870						TR

@ 8.0 to 20.5 Light grey to brown cherty tuff with minor iron formation. Much oxidation.

@ 20.5 to 32.0 Grey tuffs with rusty carbonate zones at 24.0, 28.0, 30.0 and 31.0.



HOLE SH-2-81PAGE 3CONTINUATION OF DRILL HOLE LOG

FOOTAGE		DESCRIPTION	SAMPLE NUMBER	LENGTH FT.	ANALYSES Au						
FROM	TO				%	%	%	%	oz/t	oz/t	
		(1) 116.0 - 124.0 Cherty strongly bedded iron formation. Bedding 70°-80° CA. Pink, grey, green and black layers. Magnetite layers occur locally. Conformable lenses and pods of Pyrite with some Pyrrhotite upto 15% Py locally. (2) 124.0 to 142.0 Bedded tuffs with rusty carbonate zones and some tuff breccia. Tuff breccia at 128.2 to 131.2 contains 1 to 3% Py in matrix and is strongly carbonated with juchsite. 134.9 to 135.5 quartz veins 35° CA with coarse Py. 140.0 to 141.2 Quartz vein with upto 5% Py in chloritic wallrocks. (3) 142.0 to 152.0 Pyritic iron formation with 5 to 10% Py in concordant layers 70-80° CA. whole section is strongly carbonated. (4) 152.0 to 162.0 Grey tuffs and cherty tuffs. strongly carbonated in upper part becoming greener, more chloritic with depth. some rusty carbonate zones (158.2 to 151.0). sparse sulfides.	142	116.0 - 120.0						.002	
			143	120.0 - 124.0						.002	
			135	124.0 - 128.0						TR	
			136	128.0 - 129.0						TR	
			144	129.0 - 131.2						TR	
			137	132.0 - 135.0						TR	
			138	135.5 - 139.5						TR	
			150	139.8 - 141.4						TR	
			139	141.5 - 142.0						.03	
			145	142.0 - 144.5						.01	
			146	144.5 - 147.0						.002	
			147	147.0 - 149.5						TR	
			148	149.5 - 152.0						TR	
			149	152.0 - 157.5						TR	
		27141	157.5 - 163.0						TR		
		27142	163.0 - 168.0								

FOOTAGE		DESCRIPTION	SAMPLE NUMBER	LENGTH FT.	ANALYSES				
FROM	TO				%	%	%	%	oz/t
182.0	400.0	<p>ANDESTIC FLOWS AND INTERMEDIATE TUFFS.</p> <p>Grey green to green, carbonated to lesser degree than tuff sequence above. Occasional speck of pyrite. Quartz veining rare.</p> <p>① 265.4 2" quartz vein 45° CA.</p> <p>② 277.0 to 284.0 strongly foliated, 45° to CA. Dark green chlorite.</p> <p>③ 353.2 to 354.0 coarse bleby disseminated Pyrite.</p>							



COSE SAMPLES

DDH

SH-2-81

SAMPLE NO.

DEPTH

ASSAYS

FROM

TO

AU PPB

AU OZ. TON

SAMPLE NO.	DEPTH FROM	DEPTH TO	AU PPB	AU OZ. TON
22130	77.0	78.0		0.01
22140	78.0	79.0		0.005
1	77.0	79.5		TRACE
2	116.0	120.0		0.002*
3	120.0	124.0		0.002*
4	128.2	131.2		TRACE
5	142.0	144.5		0.03
6	144.5	147.0		0.01
7	147.0	149.5		0.002*
8	149.5	152.0		TRACE
9	134.9	135.5		0.005
22150	139.8	141.4		TRACE
27120	29.0	32.0		TRACE
1	34.0	35.2		TR
2	35.0	43.0		TR
3	43.0	47.0		TR
4	48.5	49.0		TR
5	49.0	53.5		TR
6	53.5	53.5		TR
7	53.5	58.0		TR
8	58.7	59.0		TR
9	79.5	82.0		TR
27130	82.0	87.0		TR
1	87.0	89.0		TR
2	89.0	90.0		TR
3	110.0	115.0		TR
4	115.0	116.0		TR
5	124.0	128.0		TR
6	128.0	129.0		TR
7	132.0	135.0		TR
8	135.5	135.5		0.005
9	140.5	142.0		TRACE
10	152.5	157.5		TR
11	157.5	163.0		TR
12	163.0	163.0		TR

CORE SAMPLES

DDH SH-2-B1

(CONT)

SAMPLE NO.

DEPTH  
FROM TO

ASSAYS  
Au Oz. TON

27000  
27001  
27002

36.0 37.2  
47.0 48.3  
63.0 65.5

TRACE  
TR  
TR

SLUDGE SAMPLES DDH. SH-2-B1

SAMPLE NO.	DEPTH		ASSAYS Au PPB.
	FROM	TO	
22201	10	20	1
2	20	30	7
3	30	40	11
4	40	50	1
5	50	60	1
6	60	70	14
7	70	80	141
8	80	90	130
9	90	100	43
22210	100	110	25
1	110	120	280
2	120	130	58
3	130	140	123
4	140	150	522*
5	150	160	77
6	160	170	108
7	170	180	29
8	180	190	29
9	190	200	37

\* 2-26-22









CORE SAMPLES

DDH SH-4-81

SAMPLE NO.	DEPTH		ASSAYS Au Oz. TON	
	FROM	TO		
2650 1	31.5	33.5	TRACE	
2	33.5	37.0	TR	③
3	37.0	42.0	TR	④
4	42.0	47.0	TR	⑤
5	47.0	48.5	0.002 <sup>+</sup>	⑥
6	66.5	71.0	TRACE	⑦
7	71.0	76.0	TR	⑧
8	76.0	81.0	TR	⑨
9	81.0	86.0	TR	⑩
2651 0	123.5	131.0	0.005	
1	131.0	135.0	TRACE	
2	135.0	138.0	0.002 <sup>+</sup>	
3	157.8	159.8	0.002 <sup>+</sup>	
4	159.8	163.2	0.005	
5	163.2	165.0	0.002 <sup>+</sup>	
6	165.0	169.0	TRACE	
7	169.0	170.3	0.005	
8	175.0	178.0	TRACE	
9	194.0	196.0	TR	
2652 0	196.0	198.5	0.005	
1222 1 2	133.0	143.0	TRACE	
3	143.0	146.0	TR	
4	146.0	151.0	TR	
5	151.0	156.0	TR	
6	156.0	157.8	TR	
7	171.5	175.0	TR	
8	182.5	186.0	TR	
9	186.0	191.0	TR	
12222 0	191.0	192.0	TR	
1	201.0	205.0	TR	
2	205.0	210.0	TR	
3	210.0	215.0	TR	
4	215.0	220.0	TR	



LUZZ SAMPLES

DDH SH-4-81

(CON'T)

SAMPLE NO.

DEPTH

ASSAYS  
AU OZ. TON

FROM TO

272020	50.0	52.0	TRACE	0
231	43.0	52.0	TR	7
042	52.0	57.0	TR	8
055	57.0	62.0	TR	9
064	63.0	66.5	TR	10
075	57.0	91.0	TR	
085	91.0	96.0	TR	
097	96.0	101.0	TR	
108	120.0	126.0	TR	
119	126.0	129.0	TR	
27051	29.0	30.0	TRACE	0
2	36.0	87.0	TR	15
3	178.0	181.0	TR	
4	194.0	194.0	TR	
5	198.5	200.0	TR	
6	320.5	331.5	0.002 <sup>+</sup>	
7	32.2	34.5	TR	0

SLUDGE SAMPLES

DDH

SH-4-81

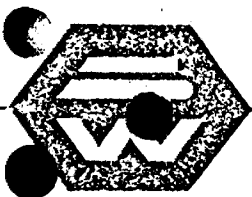
SAMPLE NO.

DEPTH

ASSAYS  
Au PPB.

FROM TO

SAMPLE NO.	DEPTH FROM	DEPTH TO	ASSAYS Au PPB.
22220	10	20	
1	20	30	
2	30	40	256
3	40	50	5
4	50	60	46
5	60	70	22
6	70	80	64
7	80	90	250
8	90	100	3
9	100	110	2
22230	110	120	18
1	120	130	140
2	130	140	118
3	140	150	189
4	150	160	36
5	160	170	595*
6	170	180	163
7	180	190	40
8	190	200	1679*
9	200	210	134
22240	210	220	265
1	220	230	53
2	230	240	11
3	240	250	55
4	250	260	7
5	260	270	60
6	270	280	30
7	280	290	47
8	290	300	4
9	300	310	4
22250	310	320	86



# BELL-WHITE ANALYTICAL LABORATORIES LTD.

P.O. BOX 187.

HAILEYBURY, ONTARIO

TEL: 672-3107

## Certificate of Analysis

NO. 10992

DATE: April 10, 1981.

SAMPLE(S) OF: Core(20)

RECEIVED: April 1981.

SAMPLE(S) FROM: Mr. R. Wells, Lacana Mining Corporation.

SH-4-81

### Sample No.

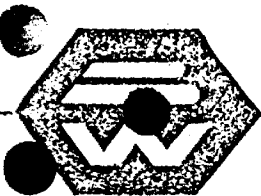
### Oz. Gold

F26801	Trace	61.5 - 63.5
2	Trace	32-37
3	Trace	37-42
4	Trace	42-47
5	0.002*	47-48.5
6	Trace	66.5-71.0
7	Trace	74-76
8	Trace	76-81
9	Trace	81-86
F26810	0.005	128.5-131
1	Trace	131-135
2	0.002*	135-138
3	0.002*	157-159.8
4	0.005	159.8-163.2
5	0.002*	163.2-165.3
6	Trace	165.0-169
7	0.005	169-170.3
8	Trace	175-178.0
9	Trace	194-196
F26820	0.005	196-198.5

\* Estimated.

BELL-WHITE ANALYTICAL LABORATORIES LTD.

PER:



# BELL - WHITE ANALYTICAL LABORATORIES LTD.

P.O. BOX 187.

HAILEYBURY, ONTARIO

TEL: 672-3107

## Certificate of Analysis

NO. 16719

DATE: May 22, 1981

SAMPLE(S) OF: Core(23)

RECEIVED: May 1981

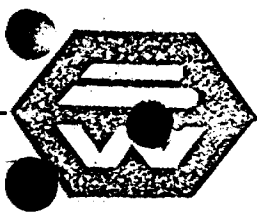
SAMPLE(S) FROM: Lacana Mining Corporation

SH-4-81

Sample No.

Oz. Gold

122212	Trace	133-143
3	Trace	143-146
4	Trace	146-151
5	Trace	151-156
6	Trace	156-157.8
7	Trace	171.5-176
8	Trace	187.5-186
9	Trace	186-191
122220	Trace	191-192
1	Trace	201-205
2	Trace	205-210
3	Trace	210-215
4	Trace	215-220
222020	Trace	20-32
222031	Trace	43-52
222042	Trace	52-57
222053	Trace	57-62
222064	Trace	62-67
222075	Trace	67-91
222086	Trace	91-96
222097	Trace	96-120
222108	Trace	120-126
222119	Trace	126-129



# BELL - WHITE ANALYTICAL LABORATORIES LTD.

P.O. BOX 187.

HAILEYBURY, ONTARIO

TEL: 672-3107

## Certificate of Analysis

NO. B93-91

DATE: April 14, 1981.

SAMPLE(S) OF: Sludge(54)

RECEIVED: April 1981.

SAMPLE(S) FROM: Mr. R. Wells, Lacana Mining Corporation.

Sample No.      Gold ppb

Sample No.      Gold ppb

SH-2-81	F22201	Gold ppb
	1	1
	2	7
	3	11
	4	1
	5	1
	6	14
	7	141
	8	130
	9	43
	10	25
	11	280
	12	58
	13	123
	14	522* 140-150
	15	77
	16	108
	17	29
	18	29
	19	37

SH-4-81	F22233	Gold ppb
	189	140
	36	150
	595*	160 - 170
	163	170
	40	180
	.06 1679*	190 - 200
	184	200
	F22240	265 210
	1	58 220
	2	11 230
	3	55 240
	4	7 250
	5	60 260
	6	86 270
	7	47 280
	8	4 290
	9	4 300
	F22250	86 310

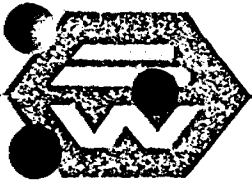
SH-4-81	F22220	Gold ppb
	4	10-20
	1	41 20-30
	2	256 30
	3	5 40
	4	45 50
	5	23 60
	6	64 70
	7	250 80
	8	3 90
	9	3 100
	F22230	18 110
	1	140 120
	2	118 130

LB-1-81	Gold ppb
1	56
2	11
3	14
4	7
5	4
6	7
7	10
8	5
9	7
F22260	10
1	14
2	21
3	1
4	4

\* Checked.

BELL-WHITE ANALYTICAL LABORATORIES LTD.

INCORPORATED WITH LEGISLATION IN THE PROVINCE OF ONTARIO. ANALYTICAL LABORATORIES LTD. IS A REGISTERED COMPANY UNDER THE COMPANIES ACT OF ONTARIO. ALL ANALYSES ARE SUBJECT TO THE TERMS AND CONDITIONS OF THE ANALYSIS AGREEMENT.



# BELL - WHITE ANALYTICAL LABORATORIES LTD.

P.O. BOX 187.

HAILEYBURY, ONTARIO

TEL: 672-3107

## Certificate of Analysis

NO. 16713

DATE: May 25, 1991.

SAMPLE(S) OF: Core(23)

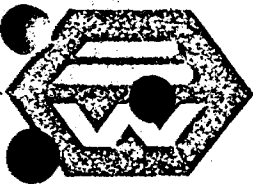
RECEIVED: May 1991.

SAMPLE(S) FROM: Mr. R. Wells, Lacana Mining Corporation.

	<u>Sample No.</u>	<u>Oz. Gold</u>	
SH-2-81	F27120	Trace	29-32
	1	Trace	34-35.2
	2	Trace	38-43
	3	Trace	43-43.5
	4	Trace	45.5-49
	5	Trace	49-52.5
	6	Trace	52.5-55.5
	7	Trace	56.5-62
	8	Trace	66.7-69
F27130	9	Trace	70.5-82
	1	Trace	82-87
	2	Trace	87-90
	3	Trace	90-100
	4	Trace	100-110
	5	Trace	115-118
	6	Trace	124-128
	7	Trace	128-130
	8	0.005	130-135
F27140	9	Trace	135-140
	1	Trace	142.5-150
	2	Trace	157.5-162
			162-168

ANALYSIS WITH LONG ESTABLISHED NORTH AMERICAN LABORATORY METHODS. ALL ANALYSES ARE SUBJECT TO THE QUALITY CONTROL AND SEVEN VALUES REPORTED ON THIS CERTIFICATE HAVE NOT BEEN ASSAYED TO SUPPORT CERTAIN ANALYSES. ANALYSES ARE THE PROPERTY OF BELL-WHITE ANALYTICAL LABORATORIES LTD.





# BELL-WHITE ANALYTICAL LABORATORIES LTD.

P.O. BOX 187.

HAILEYBURY, ONTARIO

TEL: 672-3107

## Certificate of Analysis

NO. 10397

DATE: April 6, 1981.

SAMPLE(S) OF: Core(12)

RECEIVED: April 1981.

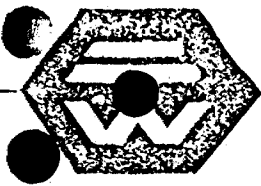
SAMPLE(S) FROM: Mr. R. Wells, Lacana Mining Corporation.

<u>Sample No.</u>	<u>Oz. Gold</u>
22139	0.01
22140	0.005
1	Trace
2	0.002*
3	0.002*
4	Trace
5	0.03
6	0.01
7	0.002*
8	Trace
9	0.005
22150	Trace

\* Estimated.

BELL-WHITE ANALYTICAL LABORATORIES LTD.

*[Handwritten signature]*  
PEN



# BELL - WHITE ANALYTICAL LABORATORIES LTD.

P.O. BOX 187.

HAILEYBURY, ONTARIO

TEL: 672-3107

## Certificate of Analysis

NO. B30-31

DATE: April 1, 1931.

SAMPLE(S) OF: Core(33)

RECEIVED: March 1931.

SAMPLE(S) FROM: Mr. R. Wells, Lacana Mining Corporation.

*SH-81*

Sample No.      Gold ppb

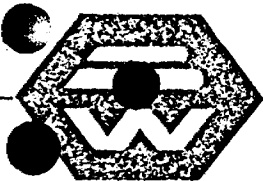
F22101	5
2	11
3	10
4	14
5	4
6	7
7	5
8	5
9	3
F22110	1
1	7
2	1
3	4
4	15
5	4
6	5
7	3
8	3
9	10

Sample No.      Gold ppb

F22120	4
1	4
2	3
3	3
4	1
5	1
6	1
7	1
8	15
9	1
F22130	12
1	ND*
2	3
3	7
4	1
5	4
6	4
7	7
8	5

\* Not detected.





# BELL-WHITE ANALYTICAL LABORATORIES LTD.

P.O. BOX 187, HAILEYBURY, ONTARIO TEL: 672-3107

## Certificate of Analysis

NO. B124-81

DATE: May 22, 1981

SAMPLE(S) OF: Sludge(11)

RECEIVED: May 1981

SAMPLE(S) FROM: Lacana Mining Corporation

*Sludges*

### SH-1-81

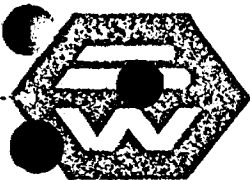
#### Footage

#### Gold ppb

10-20  
 20-30  
 30-40  
 40-50  
 50-60  
 60-70  
 70-80  
 80-90  
  
 100-110  
  
 250-260  
 260-270

14  
 7  
 3  
 3  
 7  
 7  
 4  
 3  
 |  
 11  
 |  
 5  
 4

*more than  
from remainder  
of hole*



# BELL - WHITE ANALYTICAL LABORATORIES LTD.

P.O. BOX 187.

HAILEYBURY, ONTARIO

TEL: 672-3107

## Certificate of Analysis

NO. 16717

DATE: May 25, 1981.

SAMPLE(S) OF: Core(12)

RECEIVED: May 1981.

SAMPLE(S) FROM: Mr. R. Wells, Lacana Mining Corporation.

	<u>Sample No.</u>	<u>Oz. Gold</u>	
SH-1-81	22280	Trace	251-254
	1	Trace	254-253
	2	Trace	272.4-275.4
	3	0.025*	282-283.5
	4	Trace	283-290
	5	Trace	290-292.7
	6	Trace	304-305.7
	7	Trace	302.7-296
	8	Trace	325.5-327
	9	Trace	357-358
	22290	Trace	435-436.8
	1	Trace	435-441

\* Checked.