



42A06NE0335 12 SHAW

010

Diamond Drilling

Township OF SHAW

Report No: 12

Work performed by: JAMES H. DILLON

Claim No	Hole No	Footage	Date	Note
P 47866	1	106'	July/61	
	2	301'	July/61	
	3	296'	Aug/61	
	4	297'	Aug/61	
	1	550'	Aug/63	
	2	530'	Aug/63	
	6	2080'		

Notes:

Shaw Twp.

P 47866

DIAMOND DRILL RECORD

PROPERTY James H. Dillon - Shaw Twp., Ontario

HOLE NO. 1

SHEET NUMBER Hole Located

SECTION FROM _____ TO _____

STARTED July 26, 1961

LATITUDE 675'E & 3 Post 47866

DATUM _____

COMPLETED July 28, 1961

DEPARTURE and 108'N of E/W Claim Line

BEARING Vertical

ULTIMATE DEPTH 106.0'

ELEVATION on Claim P 47866

DIP _____

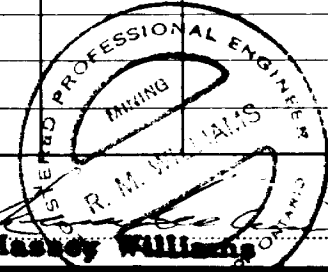
PROPOSED DEPTH _____

DEPTH FEET	FORMATION	SAMPLE NO.	WIDTH OF SAMPLE	GOLD \$	SLUDGE GOLD \$
	Ledge at surface iron formation				
0 to 12.5	Banded iron formation flat to 20° to core, rusty @ 9.5'				
12.5 to 15.0	Quartz alteration, Mn ages quartz pyritized, lively looking	1001	2.5'	nil	
15.0 to 17.5	Banded & cherty, some regional pyrite	1002	2.5'	nil	
17.5 to 25.0	Banded cherts - hard and dry				
25.0 to 50.0	Sharp contact into massive medium grained andesites slightly fragmental, flow top below the cherts 30'				
50.0 to 60.0	As Above				
60.0 to 73.0	Carbonated, greenish vertical stringers. Spherulitic andesites contact @ 45° some regional pyrite				
73.0 to 75.0	Amygdaloidal medium grained andesitic lavas, some regional pyrite				
75.0 to 100.0	As Above				
100.0 to 106.0	As Above				
	END OF HOLE				

N.M.P. TORONTO-STOCK FORM NO. 501 REV. 12/51

DRILLED BY Bradley Bros. Limited

SIGNED R. Massey Williams

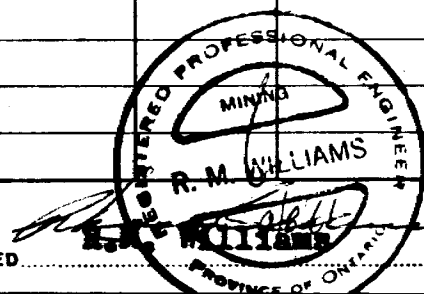


DIAMOND DRILL RECORD

PROPERTY James H. Dillon - Shaw Township, Ontario HOLE NO. 2, Page 1

SHEET NUMBER Hole Located SECTION FROM 0 TO 50.0' STARTED July 29, 1961
 LATITUDE 775'E of #3 Post 47866 DATUM _____ COMPLETED August 2, 1961
 DEPARTURE and 108'N of E/W Claim BEARING Vertical ULTIMATE DEPTH 301.0'
 ELEVATION Line on Claim P47866 DIP _____ PROPOSED DEPTH _____

DEPTH FEET	FORMATION	SAMPLE NO.	WIDTH OF SAMPLE	GOLD \$	SLUDGE GOLD \$
0 to 12.5	Ledge at surface-Andesites Grey Medium Grained Andesite 9" Red Jasper @ 8.0' @ 30' to hole Rusty and ruggish @ 12.0'				
12.5 to 25.0	Branded Cherty Iron Formation Discontinuous 20% Andesitic material				
25.0 to 36.7	Branded Iron Formation @ 30/40' to the hole				
36.7 to 50.0	Branded Cherts with scattered iron bands as follows: 38.0 to 38.3 = 0.3' 39.1 to 39.3 = 0.2' 40.0 to 40.2 = 0.2' 41.8 to 42.0 = 0.2' 42.3 to 42.5 = 0.2' 44.4 to 45.0 = 0.6' 46.2 to 46.7 = 0.5' 47.7 to 47.8 = 0.1' 48.3 to 48.4 = 0.1 Rusty and Ruggish @ 45.7'				



DIAMOND DRILL RECORD

PROPERTY _____

HOLE NO. 2 Page 2

SHEET NUMBER 2

SECTION FROM 50.0 TO 301.0

STARTED _____

LATITUDE _____

DATUM _____

COMPLETED _____

DEPARTURE _____

BEARING _____

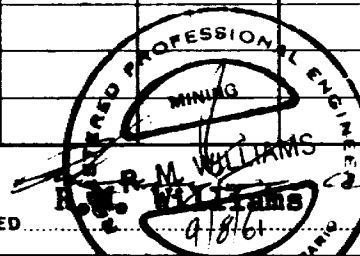
ULTIMATE DEPTH _____

ELEVATION _____

DIP _____

PROPOSED DEPTH _____

DEPTH FEET	FORMATION	SAMPLE No.	WIDTH OF SAMPLE	GOLD %	SLUDGE GOLD %
50.0 to 51.0	Grey Massive Andesite- Soft Carbonated				
51.0 to 57.5	Cherts with Regional Pyrite, Slightly Yuggish				
57.5 to 66.4	Grey Massive Andesites				
66.4 to 70.7	Spherulitic Lavas, contact @40° to hole-rusty				
70.7 to 75.0	Fine grained Andesites				
75.0 to 100.0	Medium grained Andesited, some regional alteration				
100.0 to 125.0	Same type Andesite, massive and unaltered Spherulitic Lava 117' to 118'				
125.0 to 150.0	Grey massive Andesites Spherulitic Lavas 126' to 127' Phenocrysts on eyes				
150.0 to 175.0	As above				
175.0 to 301.0	As above-Qtz regional alteration				
	END OF HOLE				



DIAMOND DRILL RECORD

PROPERTY _____

HOLE NO. 3 Page 2

SHEET NUMBER 2

SECTION FROM 50.0' TO 175.0'

STARTED _____

LATITUDE _____

DATUM _____

COMPLETED _____

DEPARTURE _____

BEARING _____

ULTIMATE DEPTH _____

ELEVATION _____

DIP _____

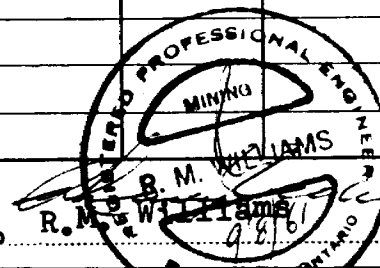
PROPOSED DEPTH _____

DEPTH FEET	FORMATION	SAMPLE No.	WIDTH OF SAMPLE	GOLD \$	SLUDGE GOLD \$
50.0 to 75.0	Medium to fine grained Andesites Some rust @ 52.5' Regionally altered, some scattered Some eyes throughout				
75.0 to 100	Darker more basic Andesite Slightly spherulitic Some regional Pyrite, together with narrow sections quite magnetic.				
100 to 125	As above, Spherulitic 108' to 109, 111' to 112', 114 to 117, Regional Pyrite				
125 to 150	Coarser grained phase of Andesite Slightly Spherulitic throughout				
150 to 152.5	Spherulitic Lavas				
152.5 to 175.0	Medium to coarse grained Andesites Some scattered regional alteration				

DRILLED BY

Bradley Bros. Ltd.

SIGNED



DIAMOND DRILL RECORD

PROPERTY James H. Dillon, Shaw Township, Ontario HOLE NO. 4 Page 1

SHEET NUMBER Hole Located SECTION FROM 0 TO 75.0' STARTED August 7, 1961
 LATITUDE 675'E of #3 Post P47866 DATUM _____ COMPLETED August 10, 1961
 DEPARTURE and 308'N of E/W Claim Line BEARING Vertical ULTIMATE DEPTH 297.0'
 ELEVATION on Claim P47866 DIP _____ PROPOSED DEPTH _____

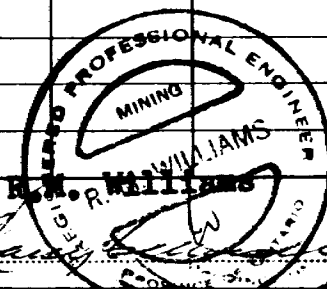
DEPTH FEET	FORMATION	SAMPLE NO.	WIDTH OF SAMPLE	GOLD \$	SLUDGE GOLD \$
	Ledge at surface				
0.0' to 10.0	Banded Cherty Iron Formation Rusty @ 5', 6', 7', 8' to 9' and 10' 50% Iron and 50% Chert				
10.0 to 15.0	Regional Pyrite in the Cherty sections Banded Iron Formation with Quarts Stringer rusty @ 10.5'				
15.0 to 25.0	Banded Cherts @ 40° to hole, some regional Pyrite and scattered narrow bands of iron and Quarts				
25.0 to 31.5	Cherts banded with Quarts- some regional Pyrite				
31.5 to 39.0	Fine grey Andesites, some regional alteration Rusty slightly vuggy				
39.0 to 40.5	Spherulitic Lavas				
40.5 to 50.0	Dark Andesitic Lavas- Quartz and cubes of regional Pyrite				
50.0 to 75.0	Fairly massive grey Andesites Rusty @ 57.0' to 58.0', regional Quartz and scattered cubical Pyrite				
	See Page 2				

N.M.P., TORONTO - STOCK FORM NO. 501 REV. 12/51

Bradley Bros Ltd

DRILLED BY _____

SIGNED _____



DIAMOND DRILL RECORD

PROPERTY _____

HOLE NO. 4 Page 2

SHEET NUMBER _____

SECTION FROM 75.0' TO 297.0'

STARTED _____

LATITUDE _____

DATUM _____

COMPLETED _____

DEPARTURE _____

BEARING _____

ULTIMATE DEPTH _____

ELEVATION _____

DIP _____

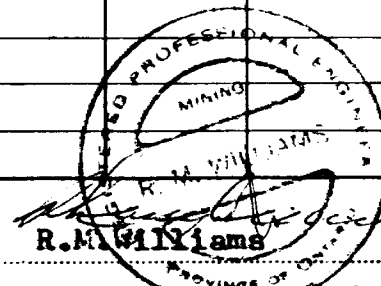
PROPOSED DEPTH _____

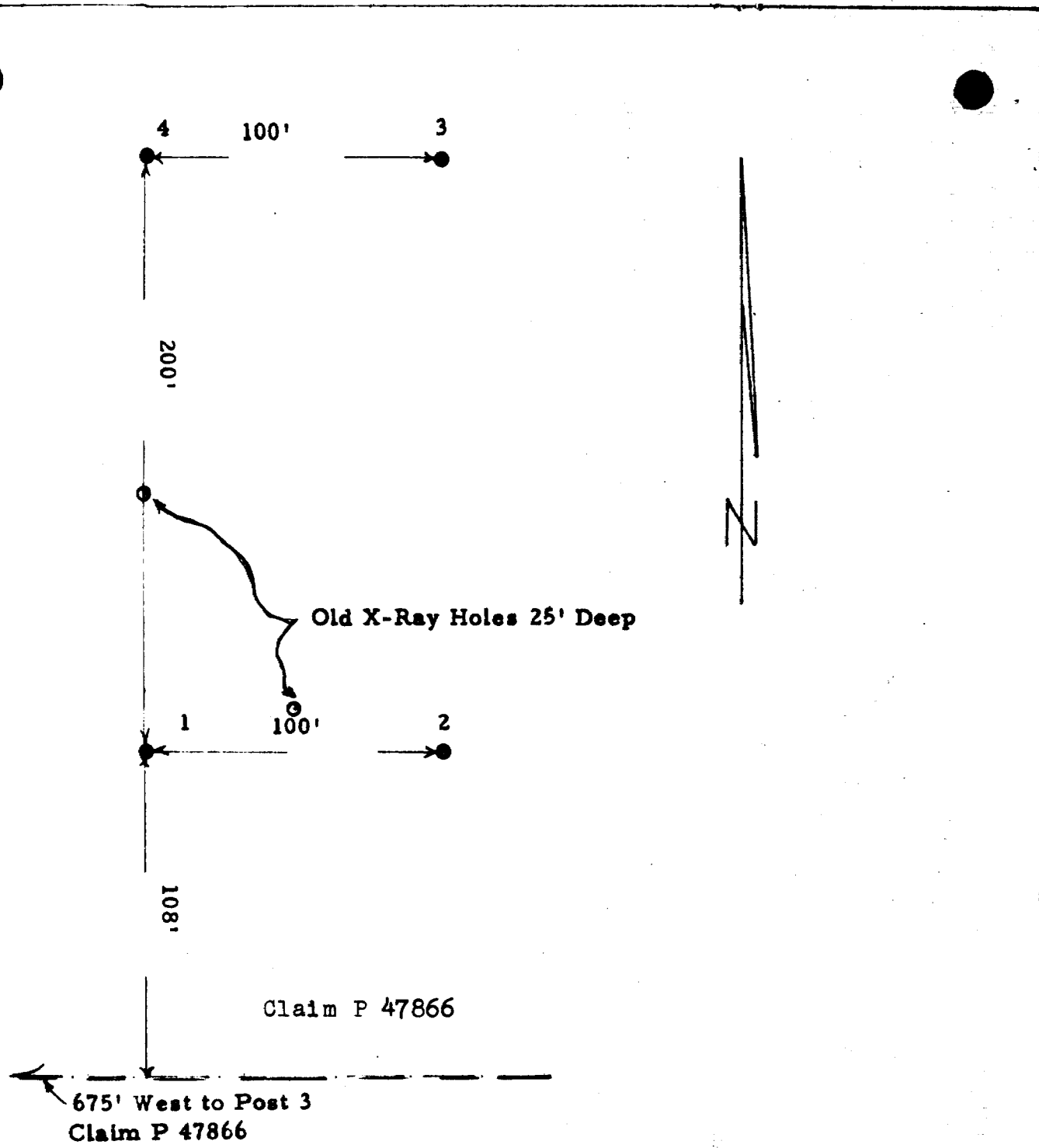
DEPTH FEET	FORMATION	SAMPLE NO.	WIDTH OF SAMPLE	GOLD \$	SLUDGE GOLD \$
75.0 to 99.0	Grey Spherulitic Lavas, massive and unaltered, fresh looking				
99.0 to 114.0	Darker, finer grained Andesites, some scattered Quartz alteration				
114.0 to 125.0	Dark fine grained andesites, considerable cubical pyrite @ 118 to 120'				
125.0 to 150.0	The same medium grained andesites, some narrow 1" to 2" bands of iron between 140 and 150				
150.0 to 175.0	Grey massive andesites, some regional alteration and cubical pyrites.				
175.0 to 200.0	Grey massive andesite, some quartz eyes, rather dioritic				
200.0 to 225.0	Grey massive andesites, regionally altered				
225.0 to 250.0	The same type but fresher looking and less altered				
250.0 to 275.0	Grey massive andesites, slightly fragmental, Regional quartz and scattered cubical pyrite.				
275.0 to 285.0	A slightly coarser phase of the dark andesite, feldspathic material and quartz 279 to 280				
285.0 to 297.0	Soft medium grained andesites, some carbonitisation throughout. Quartz @ 45' to hole, chloritized in part. DRY no mineralization.				
	END of HOLE				

N.M.P., TORONTO—STOCK FORM NO. 501 REV. 12/51

DRILLED BY Bradley Brothers Limited

SIGNED _____





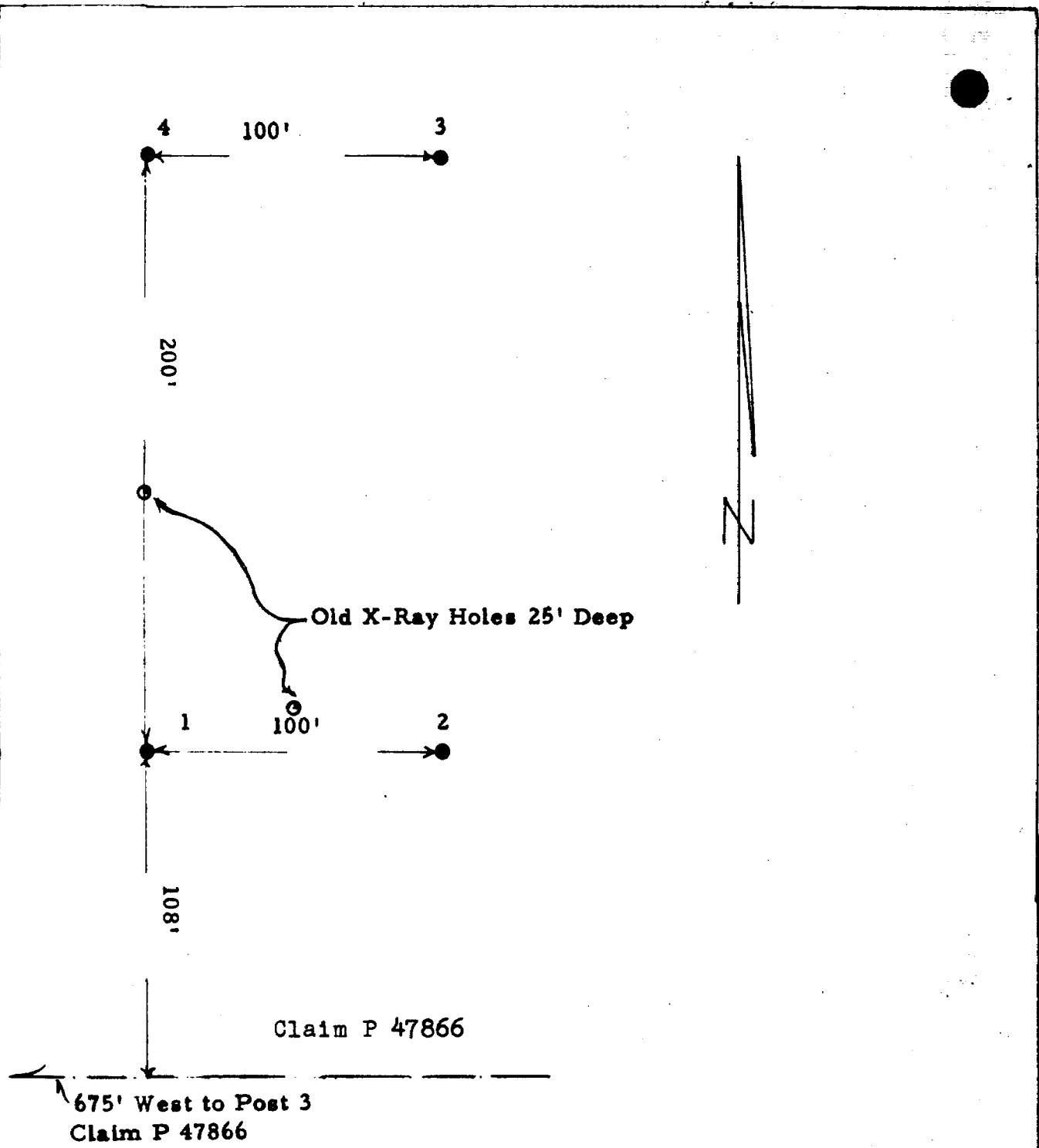
Claim P 47866

675' West to Post 3
Claim P 47866

DILLON CLAIMS
SHAW TOWNSHIP
ONTARIO
PLAN OF HOLES 1, 2, 3, & 4
ON
CLAIM P - 47866
SCALE 1" TO 50 FT.

R.M.W.



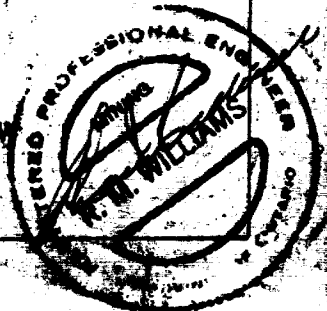


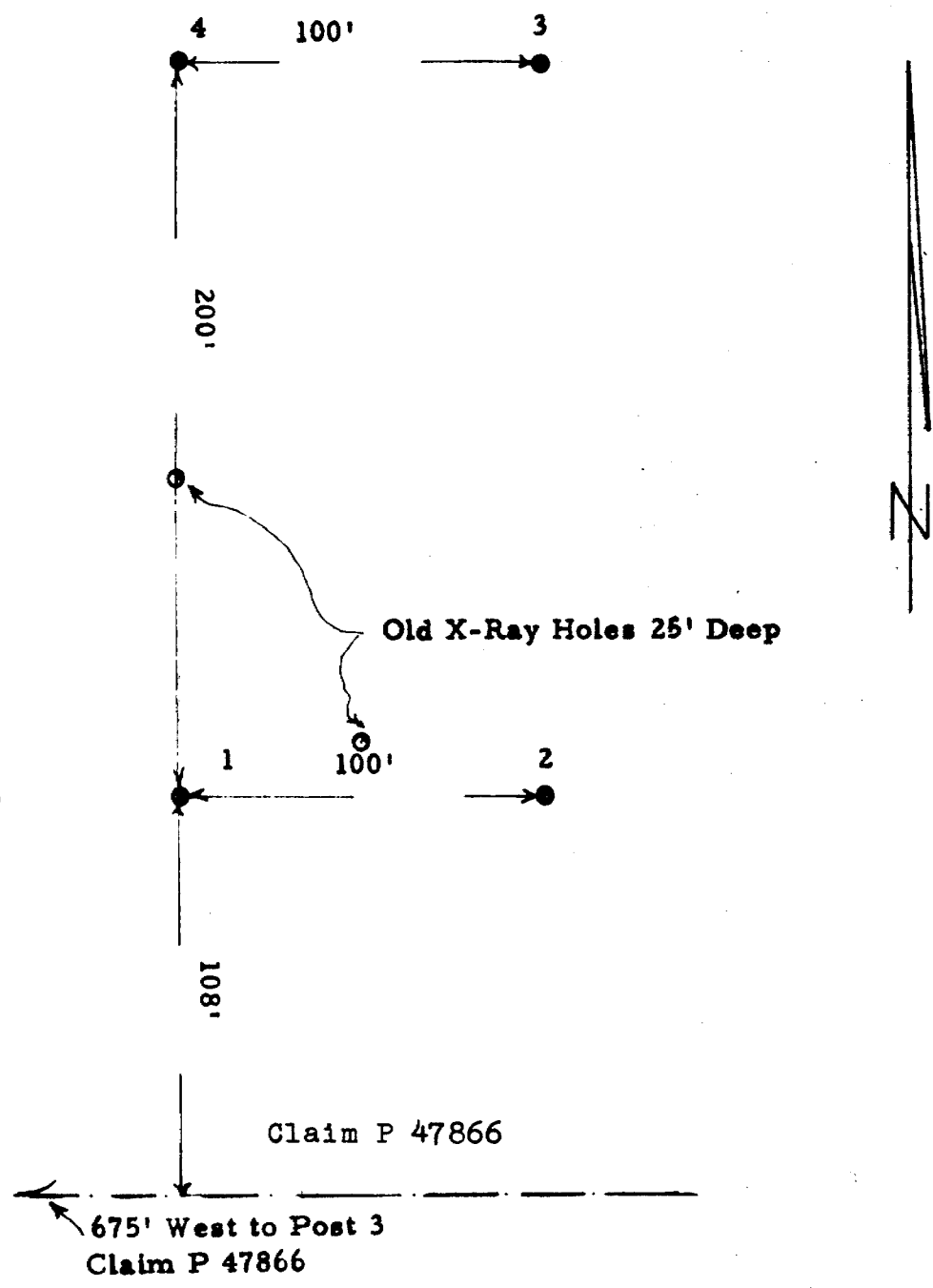
Claim P 47866

675' West to Post 3
Claim P 47866

DILLON CLAIMS
SHAW TOWNSHIP
ONTARIO
PLAN OF HOLES 1, 2, 3, & 4
ON
CLAIM P - 47866
SCALE 1" TO 50 FT.

R.M. Williams

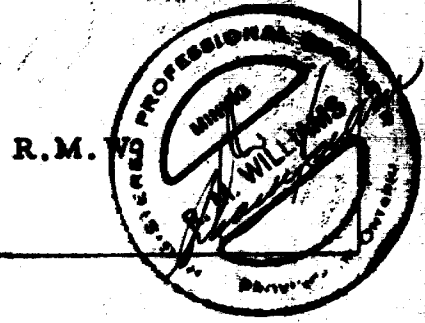




Claim P 47866

675' West to Post 3
Claim P 47866

DILLON CLAIMS
SHAW TOWNSHIP
ONTARIO
PLAN OF HOLES 1, 2, 3, & 4
ON
CLAIM P - 47866
SCALE 1" TO 50 FT.



R.M.

JAMES H. DILLON HOLDINGS
DIAMOND DRILL RECORD

P 47866

*Shaw
Twp.*

PROPERTY Shaw Township, Ontario HOLE NO. 1

SHEET NUMBER 1 of 3 SECTION FROM 0 TO 190.0' STARTED August 8th, 1963
 LATITUDE 430' Feet ^{WEST} ~~East~~ and DATUM _____ COMPLETED August 13th, 1963
 DEPARTURE 140' Feet North of BEARING _____ ULTIMATE DEPTH 550.0'
 ELEVATION Post #2 Claim P 47866 DIP Collar @ 50° PROPOSED DEPTH _____

DEPTH FEET	FORMATION	SAMPLE NO.	WIDTH OF SAMPLE	GOLD \$	SLUDGE GOLD \$
0 - 2.0	Ledge				
2.0 - 25.0	Iron formation quartz rich and very blocky the bands @ 20° to 30° to hole. Some epidote alteration & secondary pyrite.				
25.0 - 50.0	Iron formation - quartz rich 30%, very blocky magnetic in part, regionally altered - some secondary alteration				
50.0 - 75.0	A continuation of the iron, heavy secondary sulphides				
	61.0' - 62.0'	6818	1.0	Nil	
75.0 - 100.0	Iron as above - less quartz, heavy secondary sulphides				
	79.0' - 81.0'	6815	2.0	Nil	
	82.5' - 83.5'	6816	1.0	Nil	
	90.0' - 91.5'	6817	1.5	Nil	
100.0 - 125.0	Iron as above, quartz rich - banding @ 30° - 40° to hole Sulphides @ 101.5'				
125.0 - 135.0	Iron formation - rusty banding 60° to hole				
135.0 - 150.0	Spherulitic lavas - fresh & unaltered				
150.0 - 175.0	Andesitic lavas, some minor spherulitic material				
175.0 - 191.5	Medium grained feldspar porphyry - secondary quartz				
	176.5', 178.0', 179.0' - Some scattered disseminated sulphides				

N.M.P., TORONTO - STOCK FORM NO. 501 REV. 12/51

DRILLED BY Bradley Bros. Limited, Noranda, P.Q.

SIGNED *R. M. Williams*
 R. M. Williams
 PROFESSIONAL ENGINEER
 MINING
 M. A. S. I. A. M. S.
 PROVINCE OF ONTARIO

JAMES H. DILLON HOLDINGS
DIAMOND DRILL RECORD

PROPERTY Shaw Township, Ontario HOLE NO. 1

SHEET NUMBER 2 of 3 SECTION FROM 191.5 TO 450.0' STARTED _____
 LATITUDE _____ DATUM _____ COMPLETED _____
 DEPARTURE _____ BEARING _____ ULTIMATE DEPTH _____
 ELEVATION _____ DIP _____ PROPOSED DEPTH _____

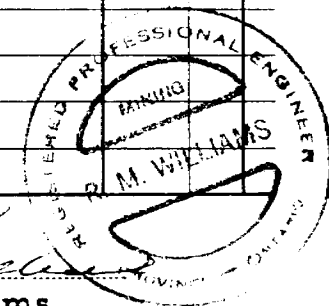
DEPTH FEET	FORMATION	SAMPLE NO.	WIDTH OF SAMPLE	GOLD %	SLUDGE GOLD %
191.5 - 200.0	Back into the banded iron formation - Some regional alteration				
200.0 - 225.0	The banded iron, cut by dikelets of feldspar porphyry - Some secondary sulphides				
	217.0' to 219.0'	6814	2.0	Nil	
225.0 - 250.0	Black graphitic iron formation - Lost core 245.0' to 249.0' Scattered secondary sulphides				
250.0 - 275.0	Dark, black, banded iron formation - some narrow bands of andesitic lavas (45° to hole) up to 8" minor quartz and some scattered sulphides (pyrite)				
275.0 - 280.5	The iron as above				
280.5 - 300.0	Passes into medium grained andesitic lavas - relatively fresh & unaltered, some minor banding				
300.0 - 325.0	Medium andesitic lavas - grey & fresh looking - some spherulitic eyes.				
325.0 - 350.0	The andesitic lavas - dark gray color blocky				
350.0 - 375.0	As above				
375.0 - 400.0	As above - fresh & unaltered				
400.0 - 425.0	A more dioritic phase - fresh & unaltered				
425.0 - 450.0	A dioritic phase of the andesites - fresh & unaltered				

N.M.P., TORONTO-STOCK FORM NO. 501 REV. 12/51

DRILLED BY Bradley Bros. Limited, Noranda, P.Q.

SIGNED _____

R. Massey Williams



JAMES H. DILLON HOLDINGS
DIAMOND DRILL RECORD

PROPERTY Shaw, Township, Ontario HOLE NO. 2

SHEET NUMBER 1 of 2 SECTION FROM 0 TO 250.0' STARTED August 13, 1963
 LATITUDE 560' Feet ^{West} ~~East~~ and DATUM _____ COMPLETED August 18, 1963
 DEPARTURE 172' Feet North of BEARING _____ ULTIMATE DEPTH 530.0'
 ELEVATION Post #2 Claim P 47866 DIP Gollar @ 41° PROPOSED DEPTH _____

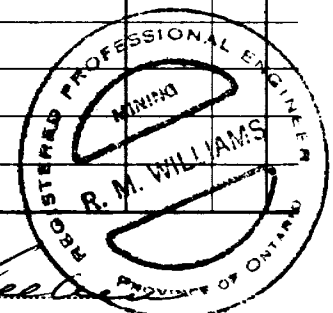
DEPTH FEET	FORMATION	SAMPLE No.	WIDTH OF SAMPLE	GOLD \$	SLUDGE GOLD \$
0 - 4.0	Casing				
4.0 - 25.0	Banded iron formation @ 20° - 30° to hole - quartz rich throughout. Some scattered regional pyrite				
25.0 - 45.0	Banded iron, quartz rich; some scattered pyrite				
45.0 - 50.0	Andesitic lavas				
50.0 - 65.0	Very blocky andesitic lavas with porphyry dike material				
65.0 - 75.0	Dioritic - andesitic lavas				
75.0 - 80.0	As above				
80.0 - 100.0	Dark graphitic quartz rich iron formation				
100.0 - 125.0	Quartz rich - banded 50° to hole - dark graphitic iron bands				
125.0 - 130.0	As above - 127.5' - 130.0'	6813	2.5	Nil	
130.0 - 150.0	Dioritic, blocky lavas				
150.0 - 175.0	Blocky in part, fresh, regionally altered andesitic lavas				
175.0 - 200.0	Andesitic lavas - fresh - some scattered quartz				
200.0 - 225.0	Andesitic lavas - some spherulitic phases				
	221.0' - 223.0'				
225.0 - 250.0	Andesitic lavas - some spherulitic phases				

N.M.P., TORONTO-STOCK FORM NO. 501 REV. 12/51

DRILLED BY Bradley Bros. Limited Noranda, P.Q.

SIGNED _____

R. Mackay Williams



JAMES H. DILLON HOLDINGS
DIAMOND DRILL RECORD

PROPERTY Shaw Township, Ontario HOLE NO. 2

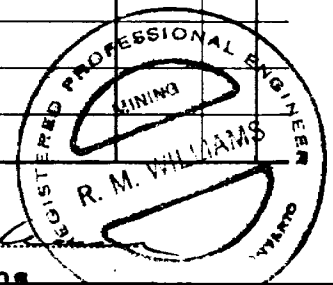
SHEET NUMBER 2 of 2 SECTION FROM 250.0' TO 530.0' STARTED _____
 LATITUDE _____ DATUM _____ COMPLETED _____
 DEPARTURE _____ BEARING _____ ULTIMATE DEPTH _____
 ELEVATION _____ DIP _____ PROPOSED DEPTH _____

DEPTH FEET	FORMATION	SAMPLE No.	WIDTH OF SAMPLE	GOLD \$	SLUDGE GOLD \$
250.0 - 275.0	As above - lost core 261.0' to 265.0' - some spherulitic phases				
275.0 - 300.0	Andesitic lavas - fresh - some regional quartz only				
300.0 - 325.0	As above - lost core 311.0 to 314.0				
325.0 - 350.0	Dark grey andesitic lavas slightly graphitic fresh & regionally altered				
350.0 - 375.0	As above - lost core 357.0' - 361.0'				
375.0 - 400.0	Andesitic lavas - regionally altered				
400.0 - 425.0	As above - regional alteration only				
425.0 - 460.0	As above, some dike alteration 445.0' - 450.0' Lost core 427.5 - 431.0'				
460.0 - 475.0	Andesitic lavas, scattered quartz - Lost core 486.0' - 489.0'				
475.0 - 500.0	As above				
500.0 - 525.0	Fresh, unaltered andesitic lavas, rather blocky phenocrysts				
525.0 - 530.0	As above - fresh & unaltered				
	END OF HOLE				

N.M.P., TORONTO - STOCK FORM NO. 501 REV. 12/51

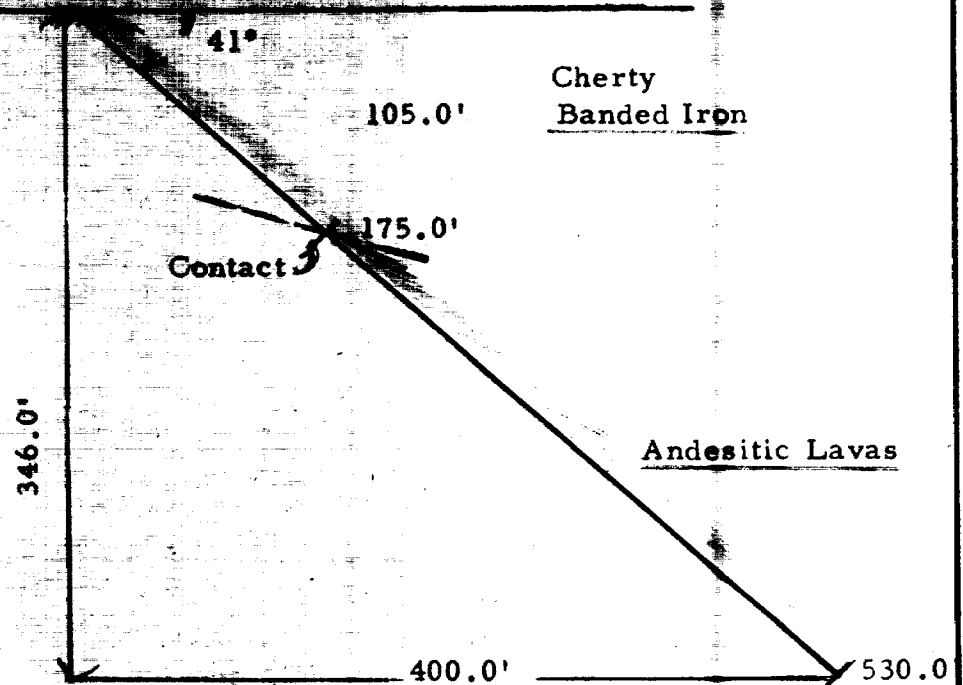
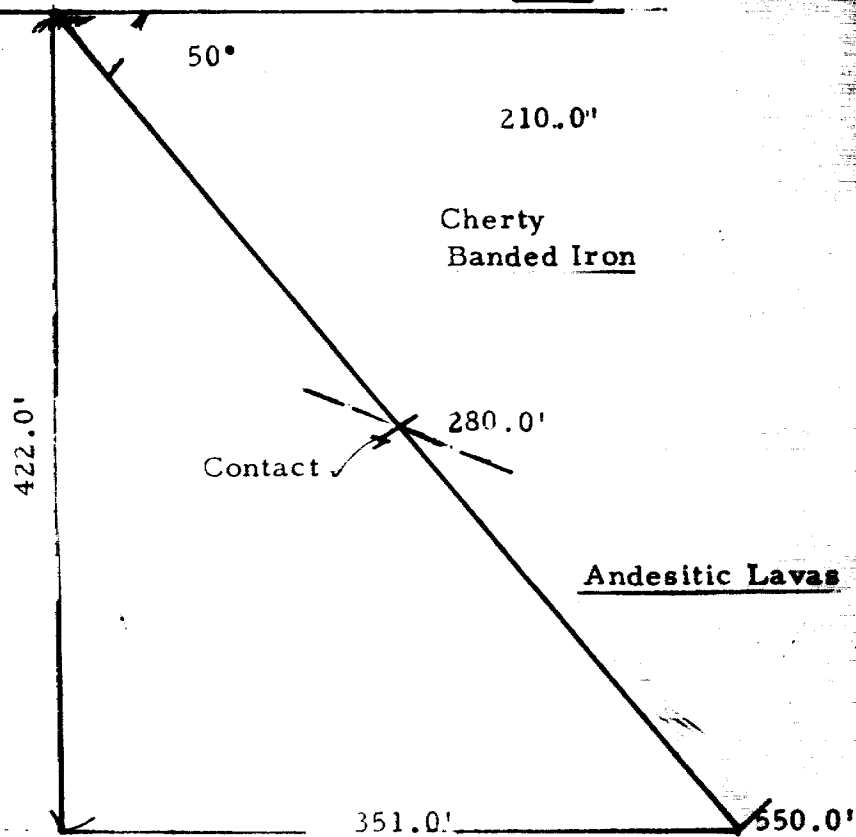
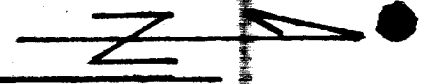
DRILLED BY Bradley Bros. Limited, Noranda, P.Q.

SIGNED R. M. Williams
R. M. Williams



Hole 1 - 1963

Hole 2 - 1963



JAMES H. DILLON HOLDINGS

Shaw Township

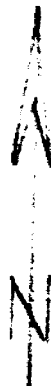
Ontario

Sections Thro' Holes 1 & 2

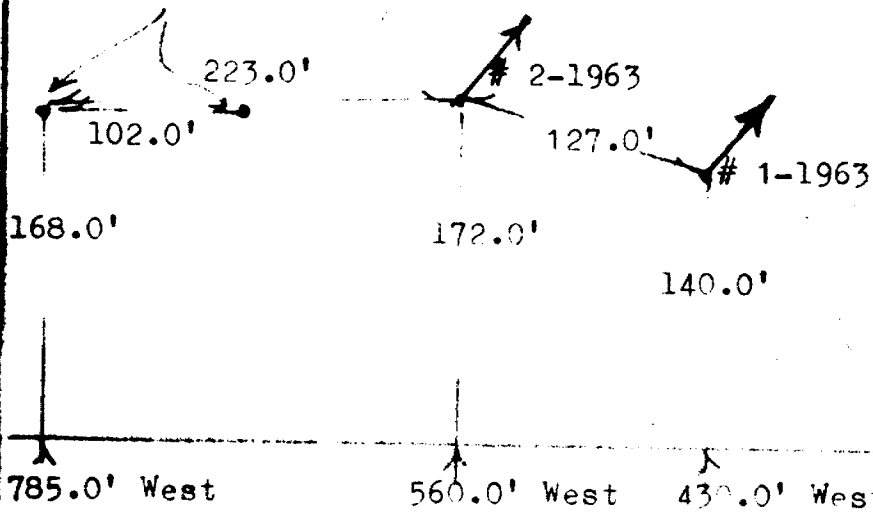
Scale 1" to 100'

**R.M.W.
August 1963**





Holes # 1 & # 2-1961



Post # 2
P 47866

JAMES H. DILLON HOLDINGS

Shaw Township
Ontario

Scale 1" to 100' R.M.W.
August 1963

Plan of D D H 1 & 2 1963

