



42A06NE0338 20 SHAW

010

Diamond Drilling

Township OF SHAW

Report NO: 20

Work performed by: TEXAS GULF SULPHUR CO.

Claim NO	Hole NO	Footage	Date	Note
P 214213	S-41-1	614'	Feb/70	(1)
P 214216	S-41-2	502'	Mar/70	(1)
	S-41-3	613'	Mar/70	(1)

Notes:

(1) 62/70

ALLRSTON OPTION
SHAW TOWNSHIP
-P214213

D. D. HOLE No. - S-41-1

Loc. 1 + 50 N Dip collar : -45° Bearing collar : North Length : 614 Feet
 8 + 00 W : : Collar el. :
 : : Bottom el. :

Drilled by: Bradley Bros. Core size: A Q Begun: Feb. 26th Ended: Mar. 1/70 Logged by: V.N.K.

Samples	Footage drilled			Geology
	From	To	Len.	
XXX				
	0	28	28	Overburden. Clay.
	28	83	55	Serpentinite. Dark Green-Black Colour. Fairly fine grain. 1-2% fine disseminated pyrite and pyrrhotite. Sample 35-40 Feet.
	83	125	42	Serpentinite. Light grey colour. Fine grain. Scratches with finger nail. Talcose. Heavy carbonate (magnesite?) Samples 105-120 Feet.
	125	150	25	Serpentinite. Light grey colour. Soft. 25% buff bro carbonate veinlets predominately at 50° to core axis
	150	168.5	18.5	Serpentinite. Light grey colour. Much magnesium carbonate development. Medium grain, granular texture.
	168.5	174	5.5	Serpentinite. Green grey colour. Very fine texture. Minor shearing and carbonate veining at 45° to core axis.
	174	230	56	Serpentinite. Medium Grain. High carbonate content. Very uniform. Light grey colour.
	230	320	90	Magnesite. Very similar to above. Light grey colour Sample 300-305 Feet.
	320	417	97	Serpentinite. Light grey colour. High carbonate content. Fine grain.
	417	419	2	Serpentinite. Light green colour. Very fine grain. Gradational contact between grey and green serpentinite at 45° to core axis.
	419	470	51	Serpentinite. Grey Colour. High carbonate contents. Fairly coarse texture. Sample 435-440 Feet.

D. D. Hole No. S-41-1

P 214216

D. D. HOLE No. S-41-2 SHAW TWP.

Loc. 11+00N Dip collar : -45° Bearing collar : Grid South Length : 502

16+00W : -44° @ 500 Ft. Collar el. :

..... : Bottom el. :

Drilled by: Bradley Bros. Core size: A.Q. Begun: Mar. 3/70 Ended Mar 6/70 Logged by: V.N.K.

Samples	Footage drilled			Geology
	From	To	Len.	
XXXX				
	0	48	48	Overburden
	48	92	44	Serpentinite. Heavily carbonatized. Pink-brown colour possibly due to surface leaching. Sample 80-85 Feet.
	92	124	32	Serpentinite. Fine grain, almost massive. Green-black colour. Minor development of green serpentine
	124	140	16	Serpentinite. Similar to above, but green serpentine development increases to 15%. Occasional carbonate veinlets. Sample 130-140 Feet.
	140	148	8	Serpentinite. Numerous fine, green serpentine veinlets. Veinlets at 30-60° to core axis. Bright yellow powdery stain on fracture surfaces. Sample 140-148 Feet.
	148	170	22	Serpentinite. Numerous fine fractures infilled with blue serpentine. Occasional veinlets contain short hard, blue asbestos fibre with minor magnetite. Sample 148-160 Feet.
	170	206	36	Serpentinite. Fine grain, fairly uniform. Occasional 1"-2" carbonate veinlet with minor green serpentine. Moderately talcose.
	206	207.5	1.5	Carbonate rock. Buff colour. Diffuse contacts at 30° to core axis.
	207.5	290	82.5	Serpentinite. Uniform texture. 20% moderately carbonatized zones.
	290	468	178	Serpentinite. Slightly mottled, uniform texture. Green-black colour. Occasional carbonate veinlets.
	468	502	34	Serpentinite. Similar to above. Carbonate zone 468-472 feet.

D. D. Hole No.

END OF HOLE.

Loc. 15+00N Dip collar : -45° Bearing collar : Grid South Length : 613 ft.
 20+00W : -47° @ 600' Collar el. :
 : Bottom el. :

Drilled by: Bradley Bros. Core size: A.Q. Begun: March 7/70 Ended: March 9/70 Logged by: V.N. Kel

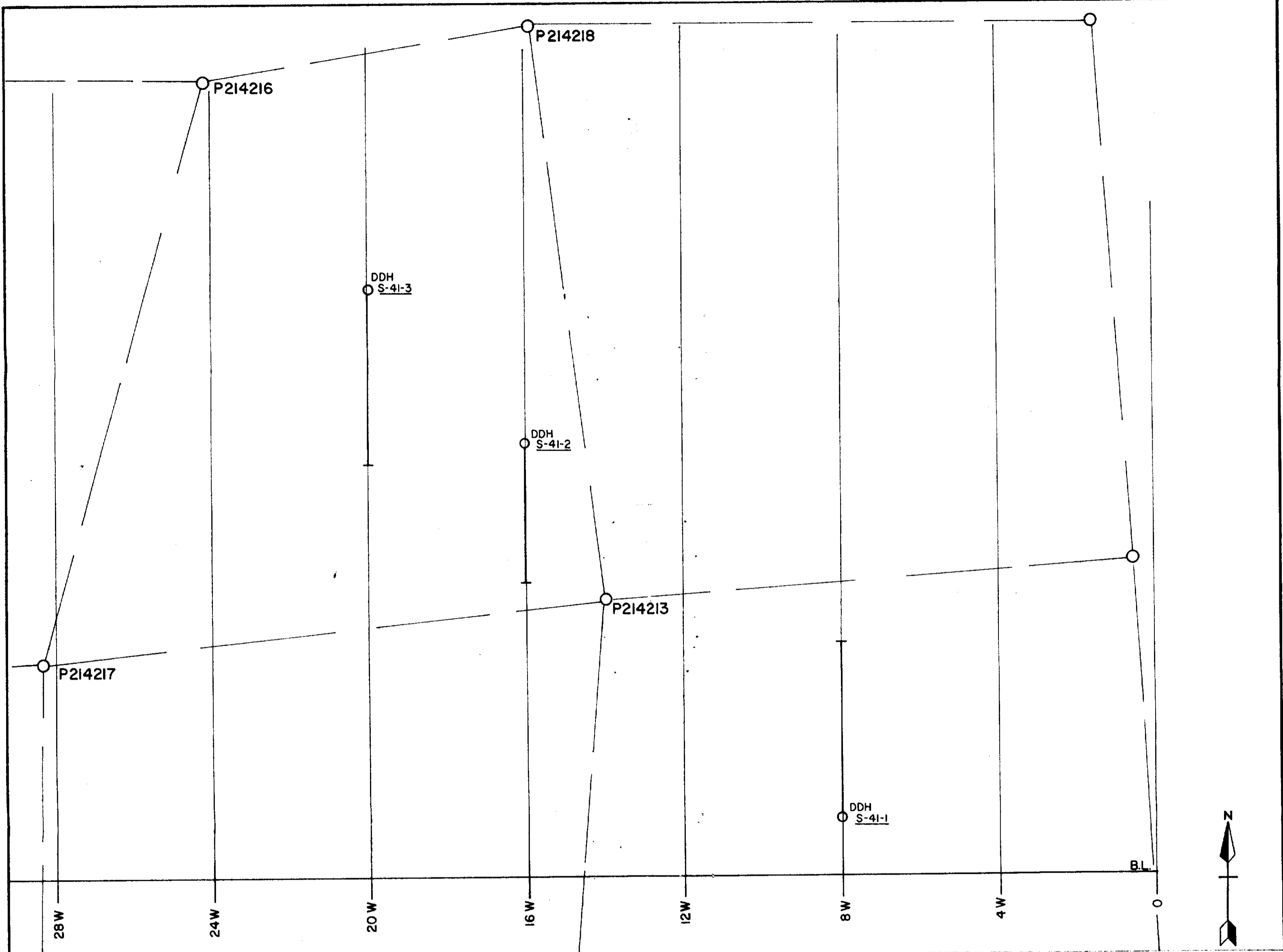
Samples	Footage drilled			Geology
	From	To	Len.	
XXXX				
	0	38	38	OVERBURDEN.
	38	55	17	SERPENTINITE. Grey colour. Initial 5 feet slightly ferruginous. Strongly fractured and sheared @ 25-50° to core axis. 15% green serpentine.
	55	83	28	SERPENTINITE. Light green colour slightly talcose, granular texture. Fairly uniform. Sample 55-65 ft.
	83	120	37	SERPENTINITE. Similar to above but contains numerous veinlets of serpentine in fractures at random orientation.
	120	126	6	SERPENTINITE. Grey colour.
	126	130	4	SERPENTINITE. Shear zone. Leached to light buff colour.
	130	140	10	SERPENTINITE. Grey colour with 30% greenish serpentine zones. Sample 130 - 140 ft.
	140	160	20	SERPENTINITE. Grey colour, fairly uniform. Minor white serpentine mica on cross fractures.
	160	168	8	SERPENTINITE. 25% green serpentine. 10% coarse ($\frac{1}{4}$ " - $\frac{1}{2}$ ") brownish mica.
	168	202	34	PERIDOTITE. Fine grain
	202	206	4	SERPENTINITE. Strongly sheared at 25-40° to core axis. 40% green and grey serpentine.
	206	252	46	SERPENTINIZED PERIDOTITE. Fine grain, black colour, Strongly magnetic.
	252	260	8	SERPENTINE, TALCOSE. 25% green serpentine moderate shearing at 30° to core axis.

D. D. HOLE No.S-41-3

Loc. Dip collar : Bearing collar : Length :
 : : Collar el. :
 : : Bottom el. :
 Drilled by: Core size: Begun: Ended:
 Logged by:

Samples	Footage drilled			Geology
	From	To	Len.	
xxxx				
	260	292	32	PERIDOTITE. Weakly serpentinized. Minor serpentine developed along fracture surfaces. Fine grain, black colour. Fairly hard. Uniform.
	292	296	4	SERPENTINITE. 20% green serpentine. Strongly sheared at 15° to core axis. Some 1" shear chrysotile fibre.
	296	358	62	PERIDOTITE. Serpentinized, fine grain, black colour. Uniform 20% green coloured, talcose sheared zones.
	358	400	42	SERPENTINITE. Green colour. Sample 450 - 455 ft.
	480	505	25	SERPENTINITE. Dark grey colour. Slightly talcose. Gradational contact.
	505	613	108	Heavy carbonatized serpentinite. Light gray colour, massive, uniform, granular texture. Medium grain.
				END OF HOLE.

[Handwritten signature]



SCALE: ONE INCH = 200'



TEXAS GULF SULPHUR CO.

DRILL HOLE LOCATION SKETCH

SHAW TWP., ONT.

(CONC. IV Lots 10 & 11)

WORK BY	DRAWN BY	DATE
	J. K.	March 1970

