



42A06NE0341 13 SHAW

010

Diamond Drilling

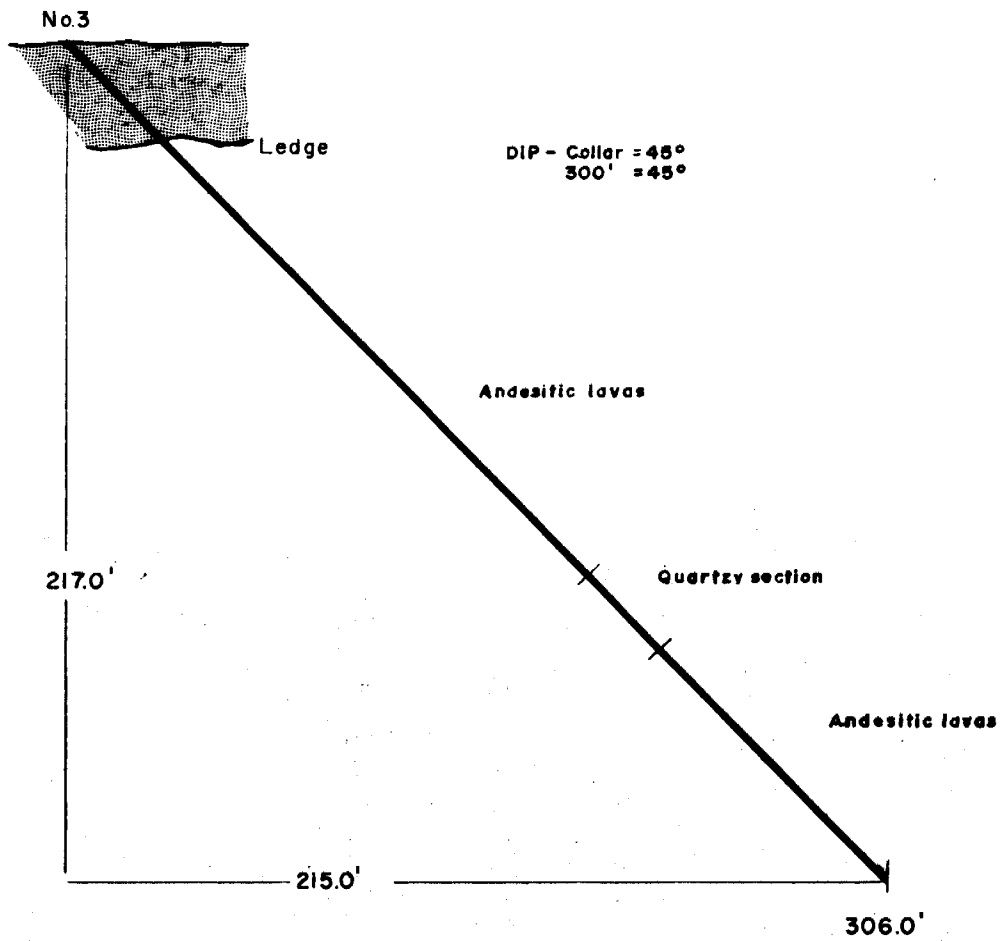
Township OF SHAW

Report N^o: 13

Work performed by: GEO-TECHNICAL DEVELOPMENT CO. LTD.

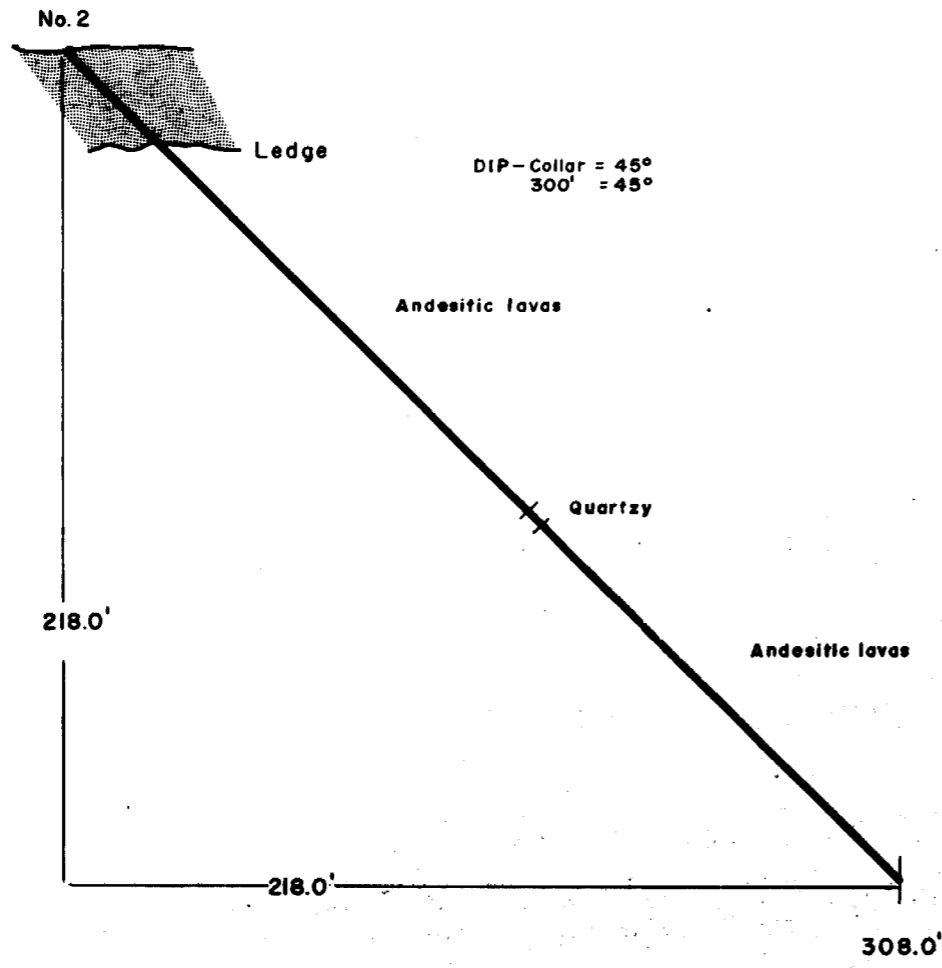
Claim N ^o	Hole N ^o	Footage	Date	Note
P 51750	2	308'	Apr/63	
	3	306'	Apr/63	
		<u>614</u>		

Notes:



LOCATION
480'S, 730'W of
Post 1-51750

Section Through No. 3
Scale 50' to 1"



LOCATION
990'S, 570'W of
Post 1-51750

Section Through No. 2
Scale 80' to 1"

DIAMOND DRILL RECORD

TESTS

PROPERTY **Trend Exploration and Development Limited**

LOCATION: LAT. **900'S**) **Line 20F - 1200 N of Post #1**
 DEP. **570'W**) **Claim 51750**

ELEVATION OF COLLAR

DATUM

DIRECTION AT START: BEARING **S 45° W**
 DIP **45°**

LOGGED BY **R. M. Williams** HOR. COMP. **218.0'**

PURPOSE OF HOLE VER. COMP. **218.0'**

Fl.	Dip.	Act. Bearing	Fl.	Dip.	Act. Bearing	Core	
						Ft. Recovered	p.c. Recovery
300'	54°						

DRILLED BY **Bradley Bros. Limited, Noranda, P.C.**

HOLE NUMBER **2**

SHEET NO. **1 of 1**

SECTION FROM **0** TO **308.0'**

STARTED **April 11th, 1963**

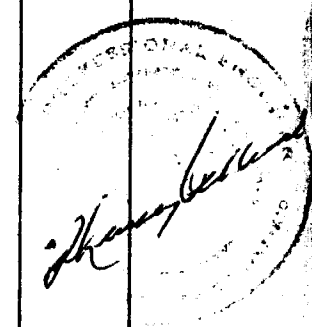
COMPLETED **April 16th, 1963**

ULTIMATE DEPTH **308.0'**

PROPOSED DEPTH

HONEY PRINTING SERVICE, TORONTO—4804

Distance		ROCK	DESCRIPTION	Sample No.	Length Ft.	ANALYSIS								
From	To					As.	Ag.	Pb.	Zn.	Cu.		Ave.		
0	35.0		Casing											
35.0	50.0		Blocky medium grained andesitic lavas regional alteration only											
50.0	75.0		Medium to coarse grained diorite blocky - fresh looking											
75.0	100.0		As above											
100.0	110.0		As above											
110.0	125.0		Andesitic lavas blocky and regionally altered											
125.0	150.0		Andesitic lavas - some quartz alteration throughout											
150.0	175.0		As above 20% quartz material throughout											
175.0	200.0		Soapy phase of the andesitic lavas											
200.0	225.0		Soapy semi-schistose andesitic lavas fault zone material											
225.0	250.0		As above - very blocky throughout											
250.0	275.0		Porphyritic phase some quartz normal to the hole											
275.0	300.0		As above											
300.0	308.0		Same material											
			END OF HOLE											



DIAMOND DRILL RECORD

TESTS

Ft.	Dip.	Ast. Bearing	Ft.	Dip.	Ast. Bearing	Core	
						Ft. Received	p.c. Recovery
300'	53°						

PROPERTY **Trend Exploration and Development Limited**

LOCATION: LAT. **480'S**) **Line 16E - 1400 N of**
 DEP. **730'W**) **Claim Post #1 Claim 51750**

ELEVATION OF COLLAR

DATUM

DIRECTION AT START: BEARING **S 45° W**
 DIP **45°**

LOGGED BY **R. M. Williams** HOR. COMP. **215.1'**

PURPOSE OF HOLE VER. COMP. **217.0'**

DRILLED BY **Bradley Bros. Limited, Noranda, P.Q.**

HOLE NUMBER **3**

SHEET NO. **1 of 1**

SECTION FROM **0** TO **306.0M**

STARTED **April 8th, 1963**

COMPLETED **April 10th, 1963**

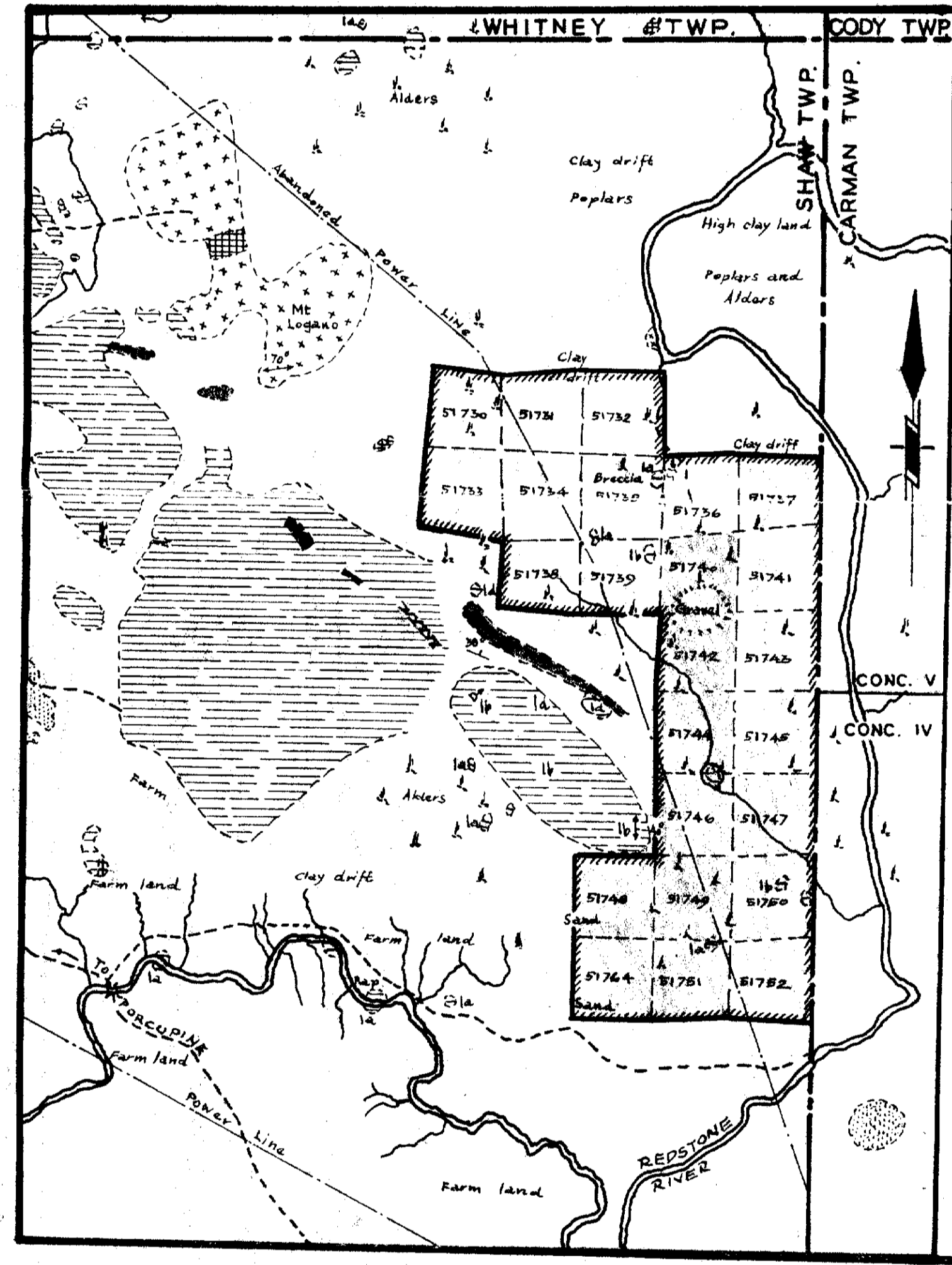
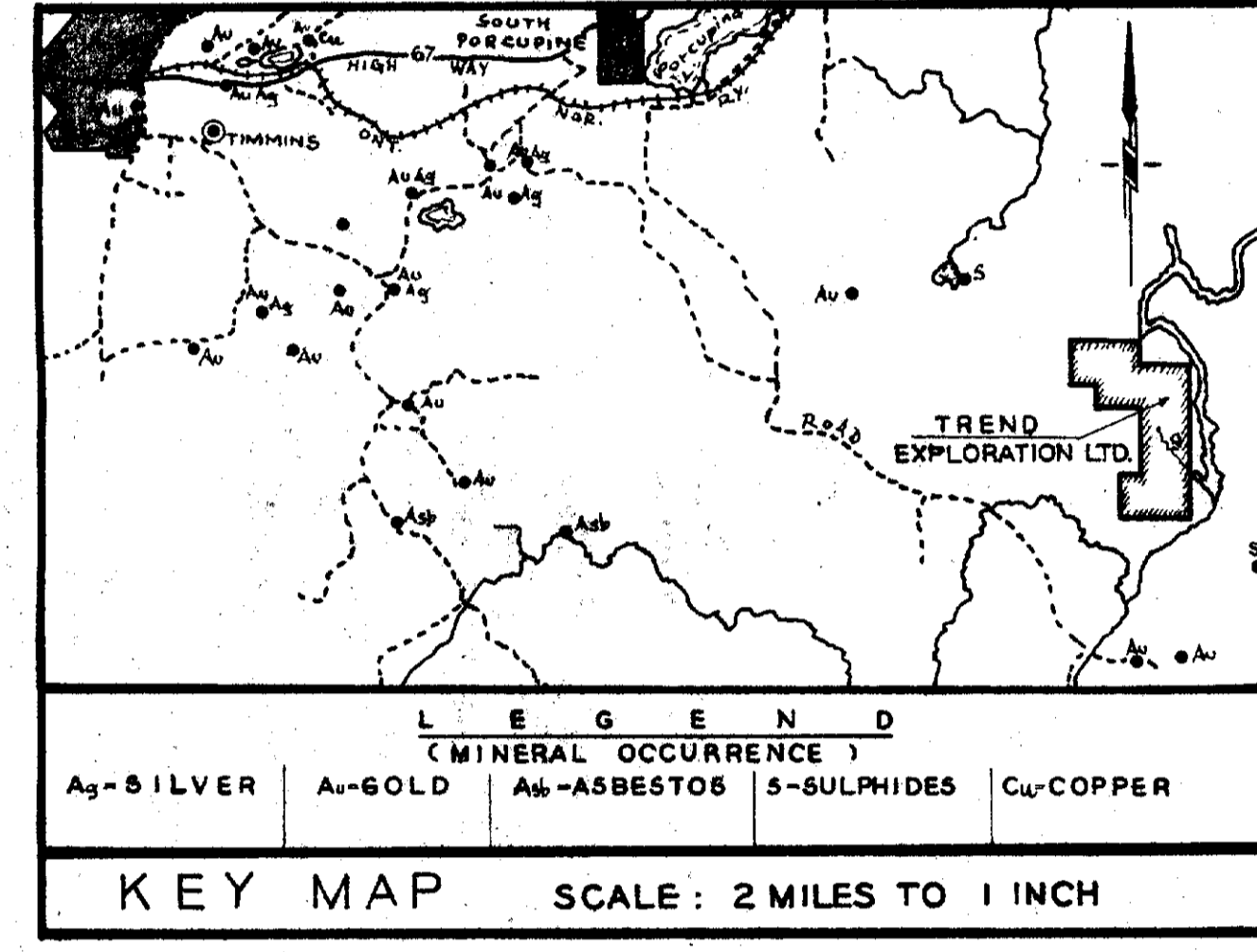
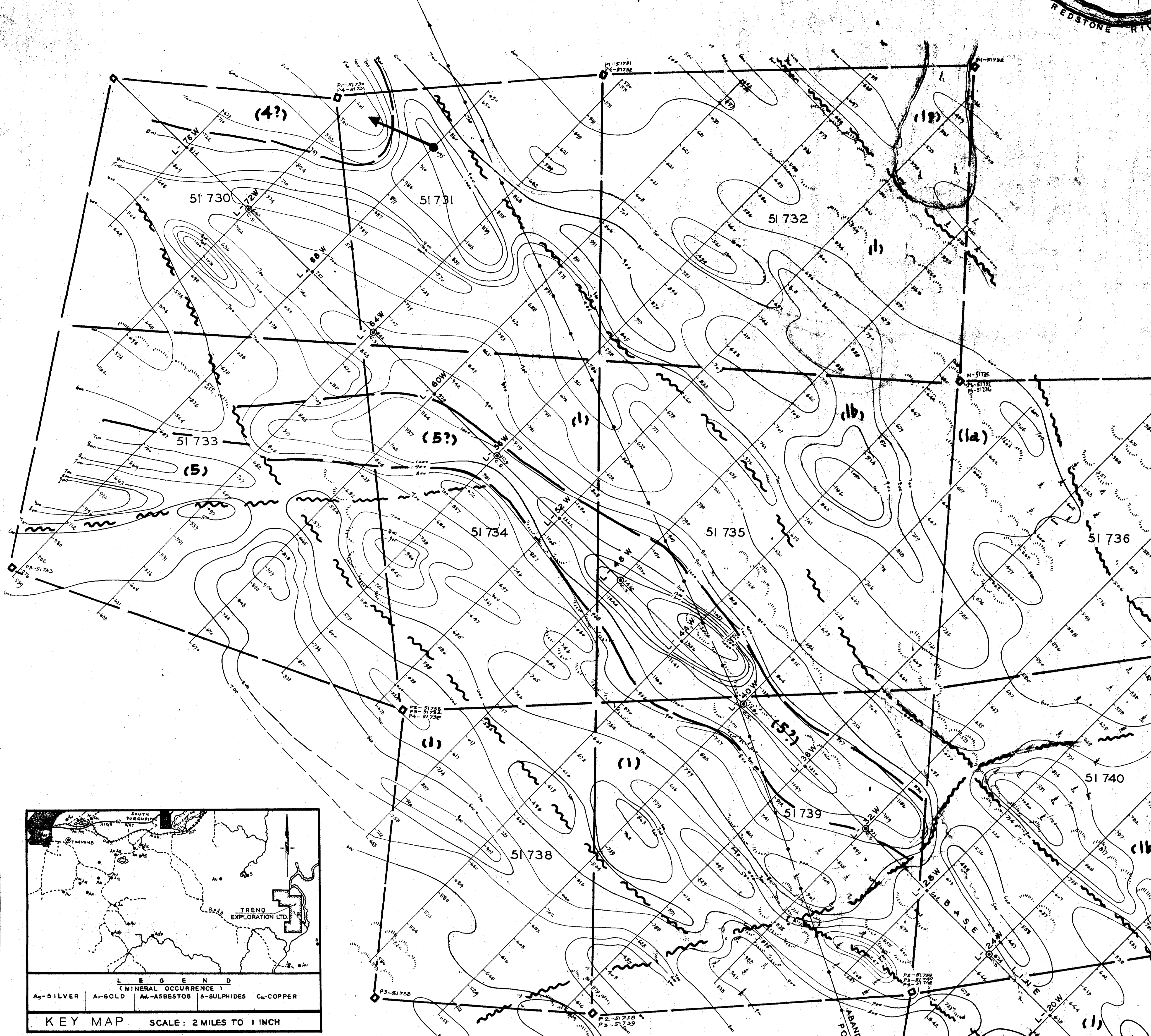
ULTIMATE DEPTH **306.0'**

PROPOSED DEPTH

HONEY PRINTING SERVICE, TORONTO—4604

Distance		ROCK	DESCRIPTION	Sample No.	Length Ft.	ANALYSIS									
From	To					Au.	Ag.	Pb.	Zn.	Cu.			Ave.		
0	36.0		Casing												
36.0	50.0		Dark - regionally altered carbonated andesitic lavas												
50.0	75.0		Blocky section - andesitic lavas												
75.0	100.0		Andesitic lavas - block sections - region ally altered only												
100.0	124.0		Dioritic lavas rather blocky												
124.0	150.0		Lighter coloured medium grained diorite												
150.0	175.0		Lighter coloured medium grained dioritic lavas some quartz rich sections, but no mineral												
175.0	200.0		The same as above - scattered regional quartz fillings												
200.0	225.0		As above - 30% quartz fillings regional alteration only												
225.0	250.0		As above - rather blocky - seams at 20°/30° to hole												
250.0	275.0		Dark carbonated andesitic lavas some scattered quartz												
275.0	300.0		Coarser regionally altered dioritic phase-lavas												
0.0	306.0		As above, quartz fillings normal to the core - rather soapy - semi - schistose												
			END OF HOLE												





LEGEND

KEWEENAW OLIVINE DIABASE.

ALGOMAN GRANITE, GRANODIORITE AND ALLIED PORPHYRIES, ALBITITE DIKES.

HAILEYBURIAN SERPENTINE.

KEEWATIN BANDED SILICEOUS IRON FORMATION TOGETHER WITH SOME TUFF-LIKE SCHISTS.

1a MASSIVE ANDESITE, DACITE;
1b PILLOW LAVA;
1c CHLORITE, TALC SCHISTS, SOAPSTONE, AND UNDIFFERENTIATED LAVA FLOWS.

SYMBOLS

S WAMP. STRIKE AND DIP OF SCHISTOSITY.

GEOLOGICAL BOUNDARY. STRIKE AND DIP OF BEDDING.

ROAD. DIRECTION OF FLOW, TOPS INDICATED BY PILLOW STRUCTURE.

NOTE: GEOLOGY FROM MAP NO. 42, ONTARIO DEPARTMENT OF MINES.

LOCATION MAP

SCALE: 1" = 2000'

**GEOPHYSICAL SURVEY DATA ON PROPERTY OF
TREND EXPLORATION AND DEVELOPMENT LTD.
ISO-DYNAMIC CONTOURS OF MAGNETIC INTENSITIES
AND
GEOLOGICAL INTERPRETATION**

SHAW TOWNSHIP
PORCUPINE AREA
ONTARIO

GEOPHYSICAL SURVEY BY:
GEO-TECHNICAL DEVELOPMENT CO. LIMITED

PLAN NO.-1
SCALE: 1" = 200' MARCH-1963

LEGEND

— LINE CUT AND CHAINED MAGNETIC READINGS OBSERVED AND PLOTTED ON RIGHT SIDE OF PICKET LINE.

○ MAGNETIC CONTROL STATION.

○ MAGNETIC CONTROL STATION.

SWAMP.

OUTLINE OF HIGHER GROUND.

CLAIM POST LOCATION AND CLAIM BOUNDARY.

CHOICE LOCATION FOR EXPLORATION DIAMOND DRILLING.

INFERRED GEOLOGY

FAULT OR SHEAR.

CROSS FAULT.

GEOLOGICAL BOUNDARY.

KEWEENAW OLIVINE DIABASE.

ALGOMAN GRANITE, GRANODIORITE AND ALLIED PORPHYRIES, ALBITITE DIKES.

HAILEYBURIAN SERPENTINE.

KEEWATIN BANDED SILICEOUS IRON FORMATION TOGETHER WITH SOME TUFF-LIKE SCHISTS.

(1) UNDIFFERENTIATED LAVA FLOWS.

(1a) MASSIVE ANDESITE, DACITE;

(1b) PILLOW LAVA;

(1c) CHLORITE, TALC SCHISTS, SOAPSTONE;

100 - 400

400 - 500

500 - 600

600 - 700

700 - 800

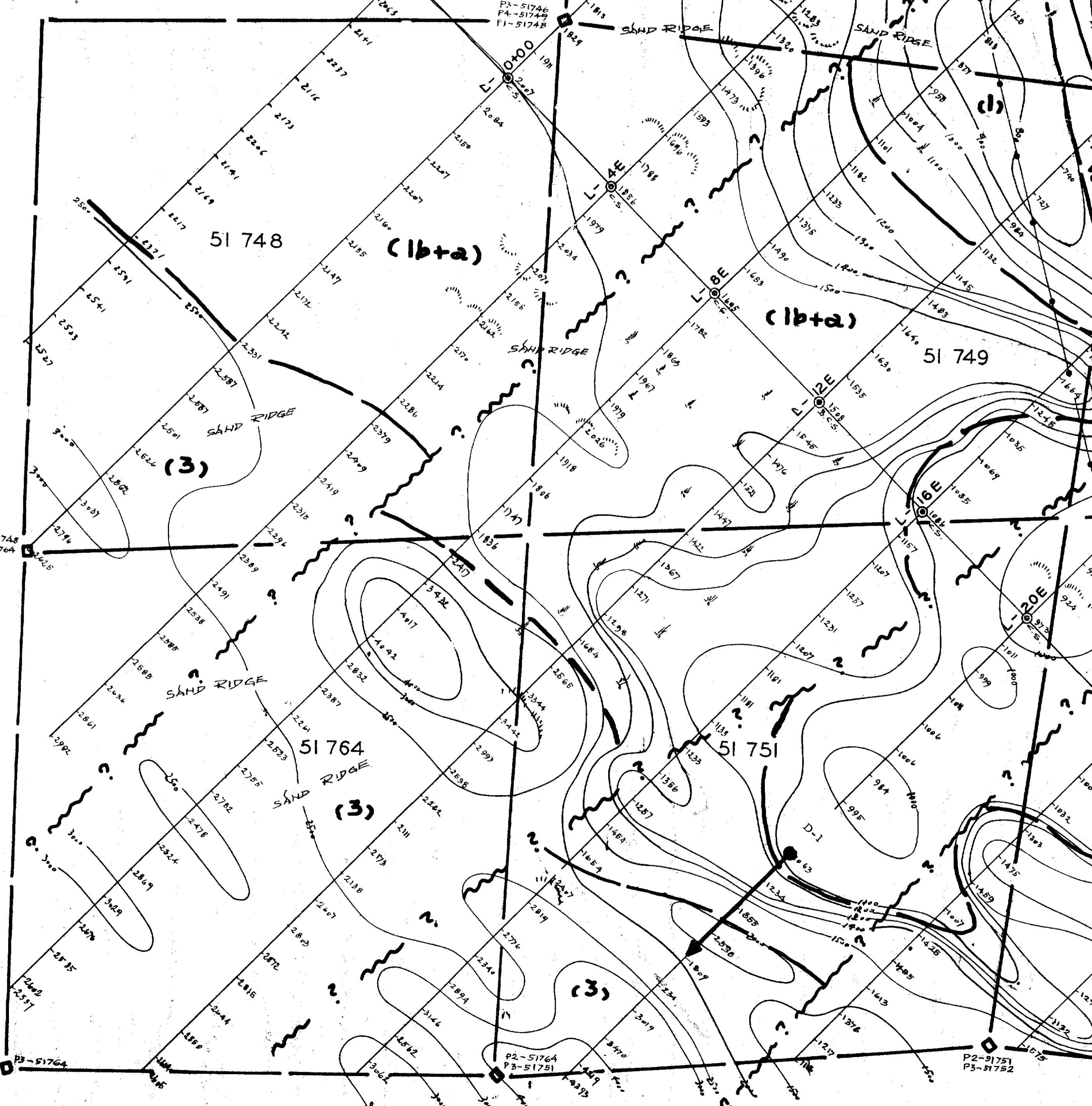
800 - 1000

1000 - 1500

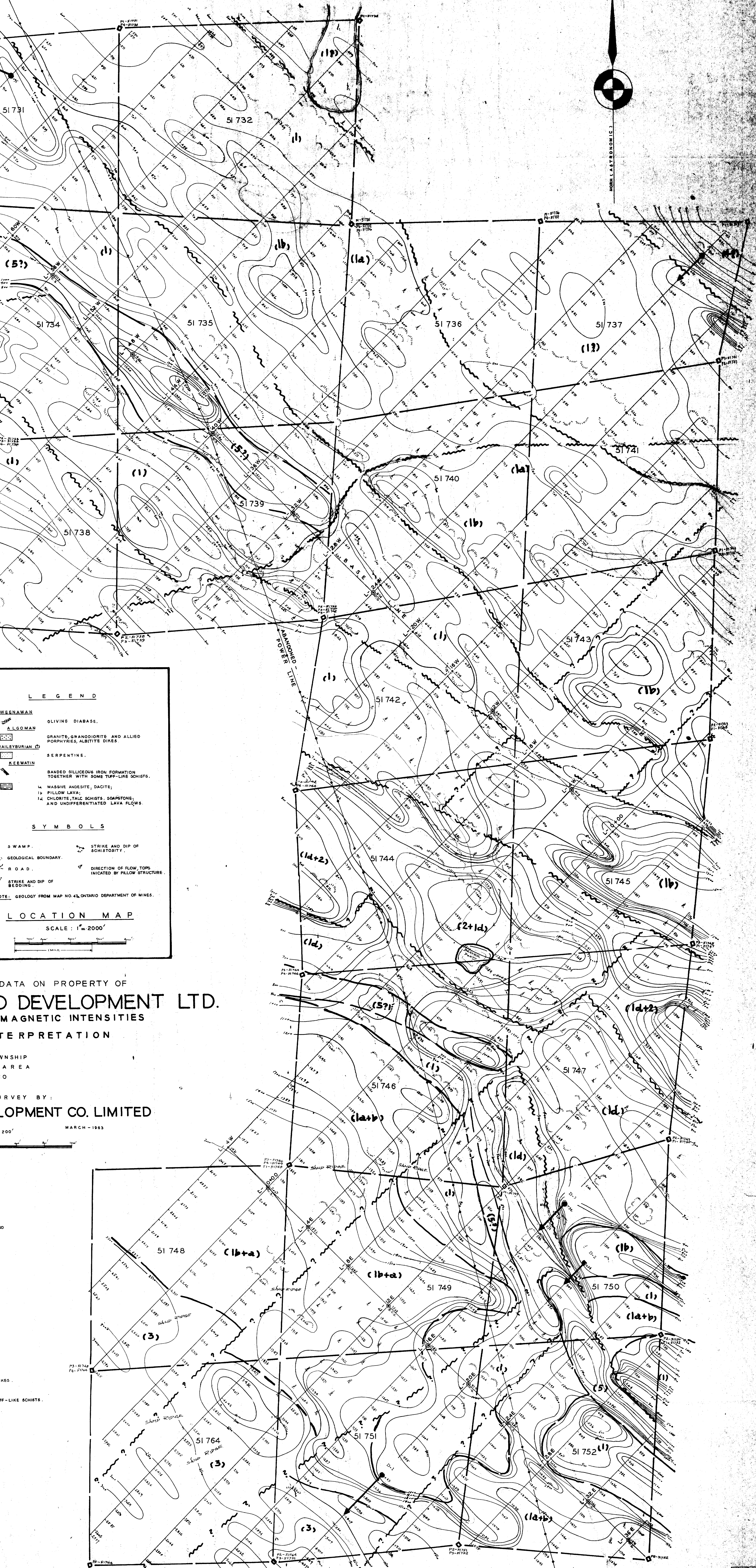
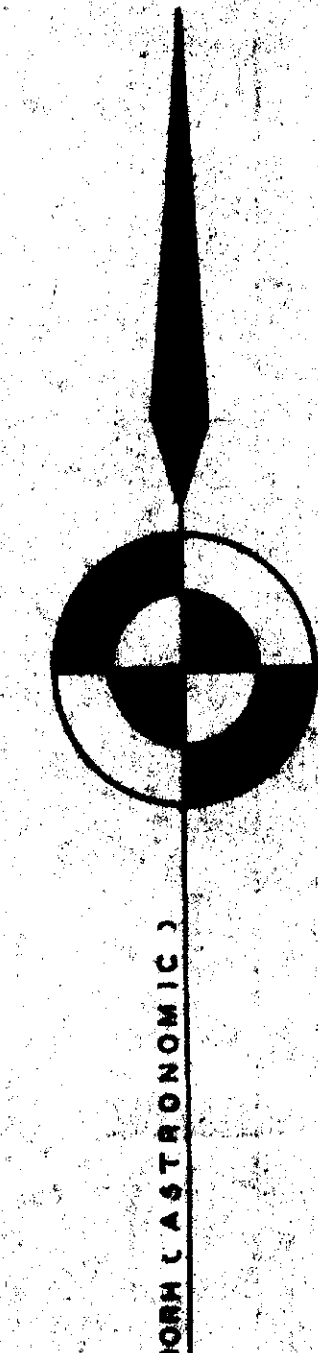
1500 - 2000

2000 - UP

(GAMMA)



REDSTONE RIVER



LEGEND

- WEENAWAN** OLIVINE DIABASE.
- ALGOMAN** GRANITE, GRANODIORITE AND ALLIED PORPHYRIES, ALBITITE DIKES.
- HAILEYBURIAN** SERPENTINE.
- KEEWATIN** BANDED SILICEOUS IRON FORMATION TOGETHER WITH SOME TURF-LIKE SCHISTS.
- (1) MASSIVE ANDESITE, DACITE;
- (1a) PILLOW LAVA;
- (1b) CHLORITE, TALC SCHISTS, SOAPSTONE; AND UNDIFFERENTIATED LAVA FLOWS.

SYMBOLS

- SWAMP.
- GEOLOGICAL BOUNDARY.
- ROAD.
- STRIKE AND DIP OF BEDDING.
- STRIKE AND DIP OF SCHISTOSITY.
- DIRECTION OF FLOW, TOPS INDICATED BY PILLOW STRUCTURE.

NOTE: GEOLOGY FROM MAP NO. 42, ONTARIO DEPARTMENT OF MINES.

LOCATION MAP

SCALE: 1" = 2000'

DATA ON PROPERTY OF
DEVELOPMENT LTD.
 MAGNETIC INTENSITIES
 INTERPRETATION

OWNSHIP
 AREA
 O

SURVEY BY:
DEVELOPMENT CO. LIMITED

MARCH - 1963

200'

OFF-LIKE SCHISTS.