

Diamond Drilling



42A06NE0346 35 WHITNEY

010

Township of WHITNEY

Report N^o 35

Work performed by: D.J. Meunier

Claim N ^o	Hole N ^o	Footage	Date	Note
P 452637	W-1	102.0	June/78	(1)

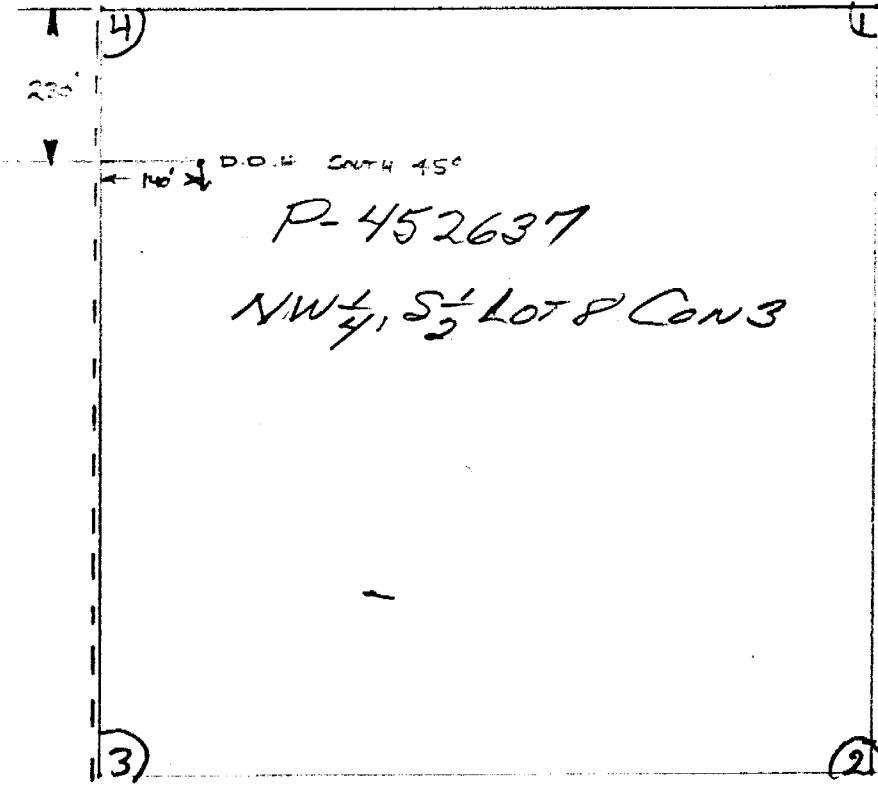
Notes:

(1) #88-79

DIAMOND DRILL LOCATION

D.J. MEUNIER PROP. WHITNEY TWP

#88-79



SECONDARY Rd. →

JUNE 11/79 DdA



THE MINING ACT - DEPARTMENT OF MINES
DIAMOND DRILLING LOG

Start a new page for every new hole, but fill in top portion of form only on first page for each hole.

FILL IN ON EVERY PAGE
HOLE NO. **W-1** PAGE NO. **1**

DRILLING COMPANY David Meunier		COLLAR ELEVATION SURFACE	BEARING OF HOLE FROM TRUE NORTH SOUTH	TOTAL FOOTAGE 102	DIP OF HOLE AT COLLAR 45	LOCATION OF HOLE IN RELATION TO A FIXED POINT ON THE CLAIM	MAP REFERENCE NO.	CLAIM NO. P-452637
DATE HOLE STARTED June 20, 1978	DATE COMPLETED July 20, 1978	DATE LOGGED June 11/79	LOGGED BY C. S. Longley	ft °			PROPERTY NAME NW 1/4 S 2 LOT 8 CON 3. WHITNEY TWP.	
EXPLORATION CO., OWNER OR OPTIONEE David Meunier		DATE SUBMITTED JUNE 11/79	SUBMITTED BY (Signature) <i>[Signature]</i>	ft °				

FOOTAGE		ROCK TYPE	DESCRIPTION <small>Colour, grain size, texture, minerals, alteration, etc.</small>	PLANAR FEATURE ANGLE *	CORE SPECIMEN FOOTAGE †	YOUR SAMPLE NUMBER	SAMPLE FOOTAGE		SAMPLE LENGTH	ASSAYS †	
FROM	TO						FROM	TO			
0	10	Tuff 20% pyrite	Mineralized acid tuff, Shearing								
10	12	Lost core									
12	27	Acid tuff	Shearing cut at 50 to 60°, altered 25% injected quartz grey to buff with dark streaks.	50	08	3728					
27	50	Altered tuff	Buff to greenish grey tuff cut at 50° 12' core 8" felsite dyke at 30', fine pyrite at contact	50	02						
50	80	Altered tuff	20' core, minor fine pyrite cut at 56° 52' 7" felsite dyke with 1" quartz cut at 25 1/2" py cubes	55	08						
80	90	Altered tuff	Buff grey altered tuff, 7' core cut 55, 20% introduced qtz	55	08						
90	102	Lost core									
	102	End of Hole.									

* For features such as foliation, bedding, schistosity, measured from the long axis of the core.

† Additional credit available. See Assessment Work Regulations.