



42A06NE0401 63.5248 DELORO

010

REPORT OF WORK PERFORMED

1986

ON THE PROPERTY OF

DIEPDAUME MINES LIMITED

TISDALE AND DELORO TOWNSHIPS

PORCUPINE MINING DIVISION OF ONTARIO

JANUARY 1 - DECEMBER 31, 1986

JUNE 10, 1987

C.F. DESSON, P. ENG.

OM 86-5-C-092

PLANS AND SECTIONS

Figure 1

Property Map 1 in. = 2000 ft.

Figure 2

Geophysical (Electromagnetic) Map 1 in. = 200 ft.

Figure 3, 3a, 3b, 3c, 3d, 3e

Drill Hole Plans and Sections 1 in. = 20 ft.

Figure 4, 4a, 4b, 4c, 4d

Samples Location Plans Surface Showings

SUMMARY

Exploration work was carried out in selected areas underground and on surface in the search for readily accessible ore to feed the nearly completed 500 ton per day mill. The proceeds from the first ore treated will be used to finance a major rehabilitation and mining program underground.

Underground

Dewatering to the 750 foot level was maintained on a continuing basis.

An exceptionally high volume of water below the 750 foot flooded level is compounded by the high influx of water from the adjoining flooded Paymaster Mine which is connected via open stopes on the 22nd level. This plus seepage from the flooded Buffola Ankerite farther west and normal natural inflows creates abnormal pumping problems, slow progress and excessive power costs.

Maintenance of the shaft, shaft guides, pumping stations and pumps, dams, safety doors, electrical systems etc. was carried out on a continuing basis with constant checkups.

A program of diamond drilling was carried out in physically safe areas (not necessarily the highest priority places) utilizing three drills. A number of gold intersections were obtained which require additional drilling to assess the grades and tonnage.

Surface

A group of five claims with surface gold showings was acquired. These claims adjoin the east side of the Deloro section of the mine property.

Two pits were drilled and blasted on the Deloro section. A number of samples were taken from the new showings. A zone of carbonate rocks extending from Paymaster No. 4 Shaft zone was also sampled - all for gold.

A geophysical survey was carried out on the Deloro Section.

PROPERTY

The property is comprised of one group of contiguous patented and unpatented mining claims situated in the south-east quadrant of Tisdale Township and the north-east quadrant of Deloro Township.

It includes the former property of Preston Mines Limited which produced 6,284,405 tons of ore grading 0.245 oz. gold per ton.

The mine during the closing period in 1968 was left in a highly unsafe condition due to retreat mining methods.

Accessible work areas to the dewatered 750 foot level are limited. The rehabilitation of the mine to safe working condition after total dewatering will be very extensive and very costly.

PROGRAMS

Underground

Mine maintenance and dewatering were carried out on a continuing basis to the 750 foot level.

The still flooded major portion of the 4100 foot deep mine has two shafts (one internal) over 80 miles of drifts, open stopes etc.

Diamond drilling was carried out on the 2nd, 4th and 5th levels of the mine in close proximity to the main No. 2 shaft.

Areas selected for possible accessible ore were chosen in safe working areas and not necessarily the highest priorities. Most of the drill targets originally chosen were found to be in highly unsafe and/or unaccessible areas - conditions which were left by the former producer from retreat mining methods used while the mine was flooding on its way to final shutdown.

Surface

Three surface showings were examined and sampled on the Deloro section of the property.

A geophysical survey was carried out over one claim also on the Deloro section.

OBJECTIVES

Underground

A high influx of water comes from the adjoining abandoned flooded Paymaster Mine which is linked by open stopes on the 22nd level under Simpson Lake. This plus additional seepage from the abandoned flooded Buffalo Ankerite Mine forced the former owner of this property Preston Mines Limited to shut down prematurely leaving a considerable tonnage of ore in situ. The cut-off grade for mineable ore in the Preston was 0.14 oz. gold per ton which is mineable ore at current prices.

The objectives of this operation is to totally dewater the mine and to rehabilitate the workings in order to develop and mine the following areas:

- (i) Some 50,000 tons of ore with a grade of 0.5 remains on the Preston 14th level where rising waters of the flooding mine when the pumps were pulled in 1968 forced abandonment of this newly developed ore zone.
- (ii) 350,000 tons of high sulphide ore grading 0.15 oz. gold per ton remains between the 10th and 18th level of the Midcamp Section of the mine. This ore was not amenable to treatment in the cyanide mill at the time. This ore is perfect for our new nearly completed flotation mill.
- (iii) There is a considerable tonnage of viable ore left in the walls and pillars of shrinkage stopes in the Preston Porphyry.
- (iv) Porphyry ore being mined on the Dome Mines Property on their 20th level (Preston 19th) dips up into the Preston Property and was partially developed but abandoned when the mine was allowed to flood prior to shutdown.
- (v) An estimated 100,000 ounces of gold is contained in the No. 2 shaft pillar between the 4th and the 7th level but is not available for mining at present.
- (vi) A large area of the West Porphyry in the Midcamp section was drilled in low grade ore on the 12th level. This section requires some development to assess the true grade.

Surface

Discover and develop surface and/or near surface ore for rapid exploitation to provide mill feed for the new mill. Subsequent profits will be used to help finance the mine rehabilitation and development and mining of underground ore.

EXPLORATION

Underground

Diamond drilling was carried out in safe accessible areas on three levels. Extensive rehabilitation of unsafe areas is required to access higher priority areas of potential ore for further diamond drilling, sampling and mining.

A total of sixteen holes were drilled on three levels as follows:

(i) 2nd Level

Four holes numbered U2-9, U2-10, U2-11 and U2-12 were drilled for a total of 257 feet. Twenty-four intersections were sampled for gold. Nothing of economic importance was intersected.

(ii) 4th Level

Five holes numbered U4-1, U4-2, U4-3, U4-4, U4-5 were drilled for a total of 670 feet. Forty-four intersections were sampled for gold. Only one sample of economic grade but non economic width was cut in hole U4-2.

(iii) 5th Level

Seven holes numbered U5-1, U5-2, U5-3, U5-4, U5-5, U5-6 and U5-7 were drilled for a total of 500 feet. Forty-eight intersections were sampled for gold. The best intersections are as follows:

Hole U5-1	0.234 oz. Au/ton	over 2.3'	
	0.097 oz. Au/ton	over 2.3'	
Hole U5-2	0.109 oz. Au/ton	over 3.0'	with Visible gold
Hole U5-3	0.066 oz. Au/ton	over 5.0'	
	0.083 oz. Au/ton	over 5.0'	
Hole U5-4	0.156 oz. Au/ton	over 3.0'	
Hole U5-5	0.071 oz. Au/ton	over 1.2'	

Surface

Three surface showings were sampled for gold. One of the showings was drilled and blasted for fresh samples.

An electromagnetic survey was carried out over one claim.

Showings

(i) Showing No. 1 (Deloro Section-Claim P688665)

Two pits were drilled and blasted in a silicified banded Iron Formation which carries sporadic gold. A total of seventeen samples were taken which yielded negligible gold values.

(ii) Showing No. 2 (Deloro Section-Claim P949060)

A number of samples were taken from an erosion remnant of banded Iron Formation and from the carbonatized volcanic rocks with quartz stringers which underlie the shallow dipping Iron Formation. A short water filled inclined "adit" exists from previous operations.

All of the Iron formation carried gold values albeit low grade. Best sample returned an assay of 0.163 oz. Au/ton from a narrow quartz vein in a cross fracture in the Iron Formation.

The quartz veins and carbonatized rocks underlying the Iron Formation yielded negligible gold.

A total of 21 samples were taken.

(iii) Showing No. 3 (Deloro Section-Claim L.O.327)

This is a wide zone of rusty weathering carbonatized lava which represents the north side of the wider zone of these volcanics which hosts the Paymaster No. 4 Shaft Ore Zone where a substantial tonnage of marginal ore was developed.

Thirteen samples were taken which were all negligible.

Geophysics (Deloro Section-Claim P634559)

An Electromagnetic Survey was carried out on the one claim using a Geonics EM-16 Receiver.

No conductors were detected and hence no drill targets.

COST INCURRED

A total of _____ was expended on the property during the period.

A breakdown of the apportioned costs accompanies the Application for the Ontario Mineral Exploitation Grant.

June 10, 1987



C.F. Desson

C.F. DESSON, P. ENG

TIMMINS TESTING LABORATORIES (T.T.L.) LIMITED

ANALYSIS REPORT

SAMPLES: Diepdaume Deloro Twp.

DATE: July 14, 1986

62 Norton Avenue
Willowdale, Ontario
M2N 4A3

(416) 225-3981

P.O. Box 1392
Timmins, Ontario
P4N 7N2

(705) 235-5450

SHOWING No. 1

SAMPLE NO.	DESCRIPTION	Au oz/ton	Ag oz./ton	Zn %	Cu %
A 14910	Pit #1 Muck Sample	0.006	NIL	NIL	NIL
B 14911	" #1 " "	0.012	NIL	NIL	NIL
C 14912	" #1 " "	0.018	NIL	NIL	NIL
D 14913	" #1 " "	NIL	NIL	NIL	NIL
E 14914	" #1 " "	0.018	NIL	NIL	NIL
F 14915	" #1 " "	0.006	NIL	NIL	NIL
G 14916	Pit #2 vein Sample - Grab	NIL	NIL	NIL	NIL
H 14917	" " " " "	NIL	NIL	NIL	NIL
I 14918	" " " " "	NIL	NIL	NIL	NIL
J 14919	" " " " "	NIL	NIL	NIL	NIL
K 14920	" " " " "	0.006	NIL	NIL	NIL
L 14921	Pit #2 Muck Sample	NIL	NIL	NIL	NIL
M 14922	" " " "	NIL	NIL	NIL	NIL
N 14923	" " " "	NIL	NIL	NIL	NIL
O 14924	" " " "	NIL	NIL	NIL	NIL
P 14925	" " " "	NIL	NIL	NIL	NIL
Q 14926	" " " "	NIL	NIL	NIL	NIL

APPENDIX "A"

G. Reacher
Assayer

TIMMINS TESTING LABORATORIES (T.T.L.) LIMITED

62 Norton Avenue
Willowdale, Ontario
M2N 4A3

(416) 225-3981

P.O. Box 1392
Timmins, Ontario
P4N 7N2

(705) 235-5450

ASSAY REPORT

SAMPLES: Diepdaume Exploration

DATE: November 1986

SHOWING No. 2 (in Iron Formation)

Deloro Tp Claim No 949060 Adit Area in Iron Formation

SAMPLE NO.	DESCRIPTION	Au oz. / ton		
IF1	Banded IF. Minor qtz in stringers	0.018		
IF2	Banded IF 30% qtz.	0.060		
IF3	qtz. stringer	0.004		
IF4	IF Scant pyrite	0.080		
IF5	IF Scant qtz Fine pyrite	0.032		
IF6	IF Scant pyrite 2% qtz	0.014		
IF7	IF Scant pyrite	0.025		
IF8	IF 80% qtz	0.036		
IF9	IF 10% qtz	0.032		
IF10	IF 100% qtz - 6" vein	0.163		
IF11	IF 30% qtz str.	0.004		

APPENDIX "A1"


Assayer

TIMMINS TESTING LABORATORIES (T.T.L.) LIMITED

62 Norton Avenue
Willowdale, Ontario
M2N 4A3

(416) 225-3981

P.O. Box 1392
Timmins, Ontario
P4N 7N2

(705) 235-5450

ASSAY REPORT

SAMPLES: Diepdaume Exploration

DATE: October 1986

*SHOWING No 2 (underlines - the 1.F.)
Deloro Tp. Cl 949000 Samples all below the 1.F. in carb'd vol.*

SAMPLE NO.	DESCRIPTION	Au oz. / ton		
14937 A	Quartz vein at Adit Portal	NIL		
14938 B	Quartz vein 4' NE of A	NIL		
14939 C	Quartz vein 8' NE of A	NIL		
14940 D	Quartz vein 20' NE of A	NIL		
14941 E	Quartz vein + pyrite 6' SW of A	NIL		
14942 F	Quartz vein + pyrite 30' NE of E	NIL		
14943 G	Elem Calcination 35' NE of E	NIL		
14944 H	Quartz vein 30' E of E	0.025		
14945 I	Quartz stringers 25' E of E	0.004		
14946 J	2' quartz vein 55' E of E	0.004		
SELECT K	Qtz stringers 34' E of E	0.011		

APPENDIX "A"

[Signature]
Assayer

TIMMINS TESTING LABORATORIES (T.T.L.) LIMITED

62 Norton Avenue
Willowdale, Ontario
M2N 4A3

(416) 225-3981

P.O. Box 1392
Timmins, Ontario
P4N 7N2

(705) 235-5450

ASSAY REPORT

SAMPLES: Diepdaume Exploration

DATE: November 1986

SHOWING NO. 3

CARBONATE ZONE - Easterly extension of Paymaster No. 4 shaft zone

SAMPLE NO.	DESCRIPTION	Au oz. / ton		
C1	Brown Carb. 1/2". 5% white carb. seams	Trace		
C2	Grey Carb. Minor qtz. Spec pyrite	Trace		
C3	Narrow shear zone	Trace		
C4	Pale green Carb Shear Zone. Minor carb. str.	Trace		
C5	Light Porphy Dike Minor qtz. in fractures	NIL		
C6	Green Carb. with 5% qtz	Trace		
C7	Green Carb. with 20% white carb 5% qtz	NIL		
C8	Green Carb. with 5% qtz Spec. pyrite	Trace		
C9	Grey Carb. Scant qtz. < 1/4% fine pyrite	Trace		
C10	Grey Carb. Scant qtz. Spec. pyrite	0.011		
C11	Grey Carb. 25% white carb	Trace		
C12	Marginalite 20% qtz, 10% white carb	Trace		
C13	Green Carb w/ grey white Carb Spec. fine pyrite	NIL		

APPENDIX "A3"

Guruchand
Assayer

DIAMOND DRILL RECORD

HOLE NO. 42-11 SHEET NO. 1

REMARKS

LOGGED BY CF Benson

NAME OF PROPERTY Dredgume Mines Limited

HOLE NO. 42-11 LENGTH 80'

LOCATION 203 S DR

LATITUDE 1502.5N DEPARTURE 4515.8E

ELEVATION TR + 7' AZIMUTH 42° DIP +60°

STARTED _____ FINISHED _____

FOOTAGE	DIP	AZIMUTH	FOOTAGE	DIP	AZIMUTH

FOOTAGE FROM	TO	DESCRIPTION	SAMPLE			%	%	ASSAYS	
			NO. SUPPH DES	FROM	FOOTAGE TO			TOTAL	oz/TON
0	57.0	<p>Dreston Porphyry: medium grey, fine grained, sericitic. Scattered quartz eyes up to 1/8" thickly fractured. Numerous small sections lost core.</p> <p>2.2-4.1: 2% quartz in irregular seams.</p> <p>At 24.2: 2 x 1/2" S lds quartz</p> <p>35.0-39.0: dark grey with sericitic in local irregular patches</p> <p>39.0-49.8: highly sericitic and fractured</p> <p>49.8-57.0: dark grey</p> <p><u>Lost core:</u> 10.1-10.7, 12.8-13.3, 19.8-20.8, 21.4-22.4, 26.5-26.9, 28.4-28.8, 29.4-30.0, 31.4-31.9, 32.8-33.8</p> <p>Dreston Porphyry: fine grained, dark grey mass No quartz eyes. Scat quartz-carbonat at 1 foot</p> <p>61.3-61.6: Feldspar Porphyry. 1/2" quartz-chlorite mix</p> <p>Talc-chlorite-carbonat Schist. dark greenish grey.</p> <p>61% quartz-carbonate in thin seams. Local fine pyritic</p> <p>CP 45"</p> <p><u>Lit Core</u> 63.9-65.0, 68.7-69.7, 71.8-72.1, 76.0-77.0.</p> <p>80.0 End of Hole</p>	14889	2.0	5.0	3.0	5	0.036	
			14890	22.4	25.0	2.6	6	0.006	
			14891	39.5	44.5	5.0	5+PW	0.019	
			14892	44.5	49.5	5.0	4+PW		
			14893	54.1	59.1	5.0	3	0.002	
			14894	61.7	66.7	5.0	6+PW		

DIAMOND DRILL RECORD

NAME OF PROPERTY Deeque Mines Limited

HOLE NO. 42-10 LENGTH 80.0'

LOCATION 203 S DR

LATITUDE 45° 02' 5N DEPARTURE 4515.8E

ELEVATION 724' AZIMUTH 42° DIP +30°

STARTED _____ FINISHED _____

HOLE NO. 42-10 SHEET NO. 1

REMARKS _____

LOGGED BY C.F. Desros

FOOTAGE	DIP	AZIMUTH	FOOTAGE	DIP	AZIMUTH

FOOTAGE	DESCRIPTION	SAMPLE			ASAYS			
		NO.	FROM	TO				
49.7	Devon Porphyry fine grained, pale grey, sericitic. Few scattered quartz eyes to 1/16" At 11.6 - 1/2" quartz parallel to core (Sides) 23.6-24.0: Loaf Core 25.0: becomes lightly sheared with local darker areas 32.1: 3/4" Sides irregular quartz 33.7 on: Sericite increasing, few Sides quartz w/ specks pyrite At 34: 1/2" silicified Sides (impure quartz) At 38.6: 1/2" quartz w/ sericite - 20° Porphyry; fine grained dark grey, massive. Chlorite volcanic Brecciated contact zone Porphyry; fine grained, dark grey, massive Carbonate - Chlorite Schist. 2 1/2 grey carbonate plus white quartz-carbonate in short streaks 63.1-63.4: quartz greyish white w/ black chlorite 45° 72.3-72.9: and 76.7-77.4: Loaf Core 80.0 End of Hole	14842	32.0	37.0	5.0	1	n/l	
		14843	37.0	40.0	5.0	8	n/l	
		14857	53.0	57.0	4.0	2	0.042	
		14858	57.0	60.0	5.0	5	0.038	
		14859	60.0	65.0	5.0	10	n/l	
		14860	65.0	70.0	5.0	3	n/l	
		14861	70.0	75.0	5.0	3	n/l	
		14862	75.0	80.0	5.0	3	0.006	
		14881	43.0	48.0	5.0	1	n/l	
		14882	48.0	53.0	5.0	1	n/l	

DIAMOND DRILL RECORD

NAME OF PROPERTY Déprouve Mines Limited
 HOLE NO. 42-9 LENGTH 80.0'
 LOCATION 203 SDR
 LATITUDE 45° 2.5' N DEPARTURE 45/5.8 E
 ELEVATION 78 + 0.5' AZIMUTH 42° DIP 0°
 STARTED _____ FINISHED _____

FOOTAGE	DIP	AZIMUTH	FOOTAGE	DIP	AZIMUTH

HOLE NO. 42-9 SHEET NO. 1
 REMARKS CWP
 LOGGED BY C F Desson

FOOTAGE FROM	TO	DESCRIPTION	SAMPLE				ASAYS				
			NO.	DEPTH	FROM	TO	%	%	OZ/TON	OZ/TON	
0	0.4	Casing Preston Porphyry: fine grained, pale grey ophanitic with local grained areas. Minor sericite. Few thin fractures of tourmaline w/ skim pyrite. Few spherules and stringers with quartz tourmaline in thin fractures. 19.7-25.4: silt darker grey. Few scattered quartz eyes. Minor tourmaline in thin fractures. 25.1-27.7: darker grey, mod. sheared, chloritic plus quartz eyes 27.7-44.0: darker grey sheared 44.0-50.4: medium grey, unsorted, sparse pyrite 50.4-55.0: Feldspathic. White albite up to 1/16". Few seams of talc. Chlorite - Carbonate Schist. Fine grained medium green highly sheared ore. Carbonatized. 10% white quartz. Core. in thin irregular seams and beds cases 70.4-75.0: Feldspar porphyry Lost Core: 10.8-12.5; 16.0-16.7; 24.3-25.0; 31.1-23.8. Quartz and Quartz - Carbonate: At 10.8'-1", 15.5'-3" (ground all round) 16.2'-1" (ground all round) 17.6'-1 1/2" 45°, 38.7'-1 1/2" + tourm. 45°, 42.6'-1 1/2" 45°, 50.0'-3" 80% + tourm, 50.4'-1/4" + streak fuchsite, 51.4'-51.65' 0% + tourm. 51.8'-52.1' 0% + tourm. 52.2'-52.4' 60% + 11% plus coarse pyrite. 53.0'-2" 60% 0-C, 56.4'-50% 0-C, 58.2'-2" 50% 0-C, 58.7-60% 0-C. 80' End of Hole	14897		30.5	35.5			3.00%		
0.4	55.0		14898		35.5	37.8	40.0	0.018			
			14899		37.8	40.0	40.0	0.020			
			14900		40.0	60.0	60.0	0.018			
			14901		60.0	65.0	65.0	0.020			
		14902		65.0	70.4	70.4	0.052				
		14903		70.4	75.0	75.0	0.020				
		14904		75.0	80.0	80.0	nil				

DIAMOND DRILL RECORD

NAME OF PROPERTY Diamond Mines Limited
 HOLE NO. 44-1 LENGTH 150 feet
 LOCATION 401 S DR
 LATITUDE 46° 55' N DEPARTURE 4854.5 E
 ELEVATION TR + 3.0' AZIMUTH 70° DIP 0°
 STARTED _____ FINISHED _____

FOOTAGE	DIP	AZIMUTH	FOOTAGE	DIP	AZIMUTH

HOLE NO. 44-1 SHEET NO. 1
 REMARKS _____
 LOGGED BY CF Deason

FOOTAGE FROM	TO	DESCRIPTION	PYR SAMPLE				OFe		ASSAYS	
			NO. SLIP DES	FROM	TO	TOTAL	%	%	OZ/TON	OZ/TON
0	7.2	Coarse Porphyry: fine grained, medium grey, v. altered. Slightly massive. Few thin seams with coarse, v. altered. Some pyrite disseminated in coarse grains. Some pyrite in matrix. Mac. matrix v. altered, v. altered. Coarse - quartz in thin seams up to 1/4".	15951	0	5.0	5'	4	0.007		
7.2	35.0	Porphyry: pale grey, fractional from above. Mac. matrix v. altered, v. altered. Coarse - quartz in thin seams up to 1/4".	15952	5.0	10.0	5'	5	0.007		
35.0	57.3	Porphyry: pale greenish grey, fairly massive. Abundant sub rounded quartz eyes to 2 mm. Minor sericite. Scattered 4.2-7-4.3.2: Abundant chlorite and sericite. Scattered 2 mm seam tourmaline.	15953	10.0	15.0	5'	1/2	0.007		
57.3	59.5	Porphyry: fine grained sericitized, pale yellow tan. Abundant sub rounded quartz eyes to 2 mm.	15934	15.0	20.0	5'	1	0.006		
59.5	103.0	Porphyry: fine grained pale grey, massive. Few scattered sub rounded quartz eyes to 2 mm.	15935	20.0	25.0	5'	3	0.007		
103.0	150.0	Porphyry: fine grained, slightly darker grey, few quartz eyes. Lightly sericitized CA 450.	15936	25.0	30.0	5'	15	0.007		
		150 End of Hole	15937	30.0	35.0	5'	70	0.006		
			15938	57.5	58.5	1.0				
			15939	91.7	93.7	2.0	40	0.006		

DIAMOND DRILL RECORD

NAME OF PROPERTY Diamond Mines Limited
 HOLE NO. 44-2 LENGTH 129 feet
 LOCATION 401 S DR
 LATITUDE 46.5.5N DEPARTURE 4854.5E
 ELEVATION TR+1.0' AZIMUTH 70° DIP 45°
 STARTED _____ FINISHED _____

FOOTAGE	DIP	AZIMUTH	FOOTAGE	DIP	AZIMUTH

HOLE NO. 44-2 SHEET NO. 1
 REMARKS
 LOGGED BY CFDesson

FOOTAGE FROM	TO	DESCRIPTION	PYR SAMPLE				ASSAYS			
			NO. OF SPLITS	SIZE INCH	FROM	TO	%	%	OZ/TON	OZ/TON
0	3.0	Porphyry: fine grained, medium grey, broken. Minor quartz-carbonate mixture in silty intervals. Scant fine disseminated pyrite. Scant pyrite in thin veins. Pyrophyry: at above. Massive. Few sub rounded quartz grains to 2mm increasing down hole.	15860	0.3	0	5.0	5	2	0.006	
3.0	20.0	Porphyry: at above. Massive. Scant pyrite. CA 30% at 12.8' which splits into four. Pyrophyry: at above. Massive. Few sub rounded quartz grains to 2mm	15861	0.3	5.0	10.0	5	1	0.008	
20.0	85.0	Porphyry: at above. Massive. Few sub rounded quartz grains to 2mm	15862	0.3	10.0	12.8	2.8	70	0.006	
85.0	125.0	Porphyry: at above. Massive. Few sub rounded quartz grains to 2mm	15863	0.3	12.8	17.0	4.2	6	n/l	
		At 94.2, 95.0, 96.4, 98.0, 105.3, 110.1, 113.0, 127.3: white quartz carbonate in vuggy silty								
		At 128.0: 1" white quartz								
		129 End of Hole								
		Hole broke into old stop								

DIAMOND DRILL RECORD

NAME OF PROPERTY Deacons fine mixed
 HOLE NO. U4-3 LENGTH 169.0'
 LOCATION 401 S DR
 LATITUDE 46° 55' N DEPARTURE 4854.5E
 ELEVATION 7R + 0.5' AZIMUTH 70' DIP -60°
 STARTED _____ FINISHED _____

FOOTAGE	DIP	AZIMUTH	FOOTAGE	DIP	AZIMUTH

HOLE NO. U4-3 SHEET NO. 1
 REMARKS _____
 LOGGED BY CED
Deason

FOOTAGE FROM TO	DESCRIPTION	SAMPLE			ASSAYS				
		NO. OF SAMPLES	FROM	FOOTAGE TO	%	%	OZ/TON	OZ/TON	
0	11'5	14221	11%	0	3.6	3.6	3.0	n/1	
		822	15%	3.6	5.7	2.1		0.066	
		823	-	5.7	7.0	2.0		n/1	
		824	50%	7.0	9.0	2.0		0.042	
		825	2%	9.0	15.0	4.0		n/1	
		826	1/2%	13.0	18.0	5.0		n/1	
		827	1/2%	18.0	20.0	2.0		n/1	
		828	4%	41.3	43.6	2.3		0.003	
		829	2%	43.6	47.0	3.4		n/1	
		830	1/2%	47.0	52.0	5.0		0.006	
		831	-	52.0	55.0	3.0		n/1	
		832	6%	55.0	60.0	5.0		n/1	
		833	5%	60.0	62.3	2.3		n/1	
		834	2%	62.3	67.3	5.0		n/1	
		835	3%	86.9	90.0	3.1		n/1	
		836	1/4%	106.5	110.0	3.5		0.027	
		837	6%	110.0	115.0	5.0		n/1	
		838	2%	115.0	120.0	5.0		n/1	
		14839	30%	128.0	129.0	1.0		n/1	

DIAMOND DRILL RECORD

NAME OF PROPERTY Deposure Mines Limited
 HOLE NO. 44-4 LENGTH 70'
 LOCATION 401 S DR
 LATITUDE 487N DEPARTURE 4833E
 ELEVATION 7875.0' AZIMUTH 70° DIP -30°
 STARTED _____ FINISHED _____

FOOTAGE	DIP	AZIMUTH	FOOTAGE	DIP	AZIMUTH

HOLE NO. 44-4 SHEET NO. 1
 REMARKS _____
 LOGGED BY C.F. Desson

FOOTAGE FROM	TO	DESCRIPTION	SAMPLE			ASSAYS			
			NO. SPTS	PH	FROM	TO	%	%	OZ/TON
0	2.9	Preston Porphyry: medium grey, moderately veined 1% quartz carbonate in irregular slices	14875	0	4.0	4.0	1	0.002	
2.9	23.9	Preston Porphyry: medium grey, fine grained, highly sericitic few quartz eyes 3.9-4.5: 1/4 tourmaline - quartz mixture in irregular seams. Few specks: pyrite At 7.0: 1/4 regular quartz - carbonate plus tourmaline 22.9: thin seam: pyrite Preston Porphyry: medium grey, highly sheared CA 85° At 23.9, 1 3/4" banded quartz-tourmaline mix. CA 60° At 32.7: 1" 50% white grey transitional quartz At 36.5: 1/4" pale grey crenulated quartz for 10" along the core axis. At 40.1: 1/4" quartz 50° 40.5-46.0: 1/8" crenulated quartz along the core axis At 44.2: 3/4" x 4" quartz 20° 44.2-46.0: specular pyrite in the porphyry At 48.4: 1/2" banded quartz and tourmaline 64.5-70.0: becomes silt carbon ground and highly veined At 68.5: 1 1/2" quartz-tourmaline-pyrite dispersion mix 70.0 End of hole	14876	4.0	8.2	4.2	2477	0.007	
			14877	22.9	27.9	5.0	7	0.003	
			14878	35.0	37.4	2.4	5477	0.006	
			14879	40.7	44.5	3.8	10	0.006	
			14880	44.5	48.4	3.9	6477	n/l	

DIAMOND DRILL RECORD

NAME OF PROPERTY Wipacium Mines Limited
 HOLE NO. 44-5 LENGTH 152.0
 LOCATION 401 S DR
 LATITUDE 1497N DEPARTURE 4835E
 ELEVATION 78+0.5' AZIMUTH 70° DIP 60°
 STARTED _____ FINISHED _____

FOOTAGE	DIP	AZIMUTH	FOOTAGE	DIP	AZIMUTH

HOLE NO. 44-5 SHEET NO. 1
 REMARKS _____
 LOGGED BY C.F. Desson

FOOTAGE FROM TO	DESCRIPTION	QUARTZ SAMPLE				ASSAYS			
		NO. OF SPECIMENS	% QUARTZ	FROM	TO	TOTAL	%	%	OZ/TON
0 2.0	Casing	14844	60%	13.2	14.2	1.0	0.042		
2.0 12.5	Pre-Run Drilling: fine grained, medium grey, massive Scattered pyrite eyes 1/6 to 1/4". Few grains pyrite Slightly sericitic 13.3-14.0: Grey-white quartz with 40% albite. Pelopon 2% tourmaline, 1/2% sericitic specks, pyrite At 41.0: 1/4" irregular (crinoid?) quartz - carbonate seam for 4" along the core. Scant tourmaline. 45.5-46.0: 2-1/4" seams quartz. carbonate plus tourmaline At 57.3-1/2" irreg. quartz. At 57.5-1/2" " At 72.6: 2" quartz-clastic mix. 5% tourmaline in streaks CA 4W 35% SW Ground CH 101.0-135.0: Scant fine disseminated pyrite At 107.0: 3/8" quartz-1/8" 35° 135.0-152.0: <1% pyrite up to 3mm in irregular patches At 134.7: 1/2" quartz beds. Spear pyrite. Both ends ground off and lost At 138.7: 3/4" qtz. w/Scant Au-rich. Spear pyrite 25° At 139.7: 2 1/2" qtz-1/8" albite mix. Spear pyrite. 45° 152.0 End of hole	14845A	2%	134.0	135.0	1.0	0.011		
		14845B	10%	138.5	139.5	1.0	0.006		
		14850C	-	147.0	148.0	1.0	0.008		
		14850D	20%	148.0	149.0	1.0	0.019		

DIAMOND DRILL RECORD

NAME OF PROPERTY Diepoume Mines, Inc.
 HOLE NO. 45-1 LENGTH 27.0'
 LOCATION S Main Drive West
 LATITUDE 1752N DEPARTURE 4680.8E
 ELEVATION 78+3.0' AZIMUTH 210' DIP 0°
 STARTED _____ FINISHED _____

FOOTAGE	DIP	AZIMUTH	FOOTAGE	DIP	AZIMUTH

HOLE NO. 45-1 SHEET NO. 1
 REMARKS _____
 LOGGED BY C.F. Desros

FOOTAGE FROM	TO	DESCRIPTION	QUARTZ SAMPLE				ASSAYS			
			NO. ANALYSED	% QUARTZ	FOOTAGE FROM	FOOTAGE TO	%	%	OZ./TON	OZ./TON
0	1.0	Coring	14814	22.0	27.0	5.0	0.006			
1.0	67.0	Dressing Barren: fine grained, pale grey, siliceous shales, various. Few sections, quartz eyes to the South tourmaline in thin fractures. 21.0 on: quartz-eyes increasing 24.0-26.0: 15% irreg. quartz - thin seam tourmaline At 25.3: 1" slds gfs at 45° 31.2-32.8: irreg. slds gfs at 10°± At 39.9: 1/2" gfs at 45° At 42.6: 3/4" " " 70° NW ground and laid At 43.6: 1/2" " " 65° At 44.1: 1" " " 70° SKIN print on floor from 54.6-55.3: white quartz vein. Spec. pyrite 57.8-60.1: white quartz vein 60.9-63.4: white quartz vein 67.0 End of Hole	14815	27.0	32.0	5.0	0.012			
			14816	32.0	37.0	5.0	0.008			
			14817	37.0	42.0	5.0	0.006			
			14818	42.0	45.0	3.0				
			14819	45.0	50.0	3.0				
			14820	50.0	53.6	3.6				
			14801	53.6	54.6	1.0				
			14802	54.6	55.3	0.7				
			14803	55.3	57.8	2.3				
			14804	57.8	60.1	2.3				
			14805	60.1	60.9	0.8				
			14806	60.9	63.4	2.5				
			14807	63.4	67.0	3.6				

DIAMOND DRILL RECORD

NAME OF PROPERTY Dieppe Mine Limited
 HOLE NO. 45-2 LENGTH 83'
 LOCATION S Main Drive West
 LATITUDE 1252N DEPARTURE 460.8 E
 ELEVATION 78 + 1.0 AZIMUTH 210° DIP 30°
 STARTED _____ FINISHED _____

FOOTAGE	DIP	AZIMUTH	FOOTAGE	DIP	AZIMUTH

HOLE NO. 45-2 SHEET NO. 1 of 2
 REMARKS Visible Gold 37.6
 LOGGED BY CFDesson

FOOTAGE FROM TO	DESCRIPTION	SAMPLE				%		ASSAYS	
		NO. SPTS IDEN	FROM	FOOTAGE TO	TOTAL			OZ/TON	OZ/TON
0	Precision Porphyry: fine grained, pale grey, ephanitic slightly sericitic. Scattered quartz eyes up to 1/8" Few s/bs quartz and tourmaline At 0.3: thin seam tourmaline At 2.7: 1/2" quartz + tourmaline (ground ends) At 3.5: 1/2" " 90° At 6.5: 5" of 50% quartz s/bs + sericitic At 15.0: 1/2" white quartz - albite mix 29.3-29.9: 50% white quartz + sericitic At 30.5: 1/2" x 3" irregular quartz 31.4-32.4: 50% white quartz + sericitic 32.4-34.1: white quartz vein. Irregular seams sericitic 32.4-34.1: white quartz 34.1-34.7: sericitized + 1/2" quartz 34.7-37.6: white milky quartz vein. Few irregular fractures ch/ark + tourmaline. Minor skim pyrite on fracture planes. Strain tourmaline + pyrite on NW one coarse s/bs pyrite near FW. Core broken with ground ends with a skin of <u>visible gold</u> on the ground end of the FW contact with porphyry. Few coarse specks PO + pyr	14808	2.6	8.6	6.0	3		n1	
		14809	27.0	29.3	2.3	4	0.012		
		14810	29.5	32.3	3.0	24	0.006		
		14811	32.3	34.6	2.3	vein	0.024		
		14812	34.6	37.6	3.0	vein	0.109	V.G.	
		14815	37.6	39.0	1.4	2	n1		
		14840	39.0	44.0	5.0	3	0.006		
		14841	57.4	61.5	4.1	2	n1		

DIAMOND DRILL RECORD

NAME OF PROPERTY Diamonds Mines Limited
 HOLE NO. 45-2 SHEET NO. 2 of 2

FOOTAGE		DESCRIPTION	NO.	SULPH IDS	SAMPLE			ASSAYS			
FROM	TO				FROM	TO	TOTAL	%	%	oz TON	oz TON
58.0	83.0	Preston Drilling: Pale to medium grey. Lightly sheared. Few irregular slds quartz. CA 70' @ 8.0-70.1: Dark grey. Few spec. pyrite Quartz 39.5' 3/4" 55°, 39.7' 3/4" 80°, 42.5' 3/4" slds, 47' 3/4" impure + tourmaline, 57.2' 3/4" + 2" irreg. spec. py. 60.5' 8 1/2" 1/2" irreg slds 61.2' 1/2" 80°, 65' 2x 1/2" slds 83 End of Hole									

DIAMOND DRILL RECORD

NAME OF PROPERTY Diebaums Mines Limited
 HOLE NO. U5-3 LENGTH 84.0
 LOCATION S Main Drive West
 LATITUDE 1752N DEPARTURE 4680.8E
 ELEVATION 7870.5' AZIMUTH 210° DIP -60°
 STARTED _____ FINISHED _____

FOOTAGE	DIP	AZIMUTH	FOOTAGE	DIP	AZIMUTH

HOLE NO. U5-3 SHEET NO. 1
 REMARKS CWD
 LOGGED BY CF Desson

FOOTAGE FROM	TO	DESCRIPTION	SAMPLE			ASSAYS			
			NO. SLICES	FOOTAGE FROM	FOOTAGE TO	%	oz/TON	oz/TON	
0	2.0	Carving	14850	16.7	18.2	1.5	20	0.003	
2.0	84.0	Preston Porphyry: pale to medium grey. Scattered quartz eyes in 5/8" matrix, highly sericitic. Minor small fossiliferous siliceous areas. At 6.3: 1" glass quartz. Feldspar At 18.0: 3/4" + 1" + 2" s/b quartz-alkali mix. 32-63: 8% quartz in scattered small s/b up to 1" 50.6-51.3: quartz vein. 1% brown chlorite, scant tourmaline and specks pyrite 64.9-83.0: highly altered, sericitized and sheared. Abun- dant small irregular s/b grey-white quartz At 66.7: 2" white quartz-alkali mix 60' 82.0-82.8: 30% quartz. 3" quartz stringer - some ground and 1/2" plw irregular quartz s/b plw to urmaline. 82.8-84.0: Brecciated, sericitized. 73.0-79.3: 6.3' out core. 84.0 End	14851	53.0	38.0	5.0'	12+ppm	0.003	
			14852	38.0	43.0	5.0	10+ppm	0.012	
			14853	43.0	48.0	5.0	2+ppm	0.066	
			14854	48.0	53.0	5.0	12+ppm	0.033	
			14855	53.0	58.0	5.0	5+ppm	0.021	
			14856	58.0	63.0	5.0	5+ppm	0.083	
			14863	63.0	68.0	5.0	3	0.018	
			14864	68.0	73.0	5.0	1	0.018	
			14865	73.0	84.0	4.7	12+ppm	0.018	

DIAMOND DRILL RECORD

NAME OF PROPERTY Deepsun Mines Limited
 HOLE NO. 45-4 LENGTH 83.0
 LOCATION S Main Drive West
 LATITUDE 75° 51' 51" N DEPARTURE 46565'
 ELEVATION 78 + 3.0 AZIMUTH 210' DIP 0°
 STARTED _____ FINISHED _____

FOOTAGE	DIP	AZIMUTH	FOOTAGE	DIP	AZIMUTH

HOLE NO. 45-4 SHEET NO. 1 of 2
 REMARKS _____
 LOGGED BY CF Deeson

FOOTAGE FROM TO	DESCRIPTION	NO. OF SLICES	SAMPLE		TOTAL	%	%	ASSAYS	
			FROM	TO					
0	At 15.2: 3" - 80% quartz calcination - sericitic mix. Pyrite in small clusters	14875	76.5	77.5	1.0	90%			0.002
3.8	Parasitic. 16.9-17.6: Quartz vein. White with 2% sericite. Scattered tourmaline, specks pyrite	14874	40.8	42.0	1.2	NIL			
3.8	20.0-83.0: becomes paler grey, sericitic. Sparse pyrite. At 23.2: 1/4" x 2" quartz on side of core	14871	37.6	39.0	1.4	2			0.024
3.8	At 24.0: 1/4" x 3" irregular quartz	14872	37.6	39.0	1.4	2			0.006
3.8	25.0-25.6: quartz vein. 5% sericite. Few specks pyrite.	14873	39.0	40.8	1.8	vein			
3.8	25.6-26.2: 40% quartz in 1/4" beds (some ground level)	14869	17.6	23.0	5.4	50			0.156
3.8	At 1.6: 1/2" irregular shes quartz	14870	23.0	26.0	3.0	50			0.012
3.8	Pyrite. Paraphy: medium grey with local paler areas. Moderately sheared and sericitic. Scattered pyrite in small clusters	14868	16.8	17.6	0.8	vein			0.008
3.8	At 0.4: 1/2" x 2" irregular quartz-carbonate	14867	14.0	16.8	2.8	2			0.006
3.8	At 0.4: 1/2" x 2" irregular quartz-carbonate	14866	0	3.8	3.8	5			0.006

DIAMOND DRILL RECORD

NAME OF PROPERTY Deepdome Mines Limited
 HOLE NO. 45-4 SHEET NO. 2 of 2

FOOTAGE		DESCRIPTION	SAMPLE			ASSAYS						
FROM	TO		NO.	% SULPHIDES	FROM	TO	TOTAL	%	%	OZ. TON	OZ. TON	
		39.0 - 40.8: Quartz Vein 5% sericite, speck pyrite. Thin streak tourmaline on footwall with pyrite 76.6 - 77.0: Quartz Vein. One short fracture with pyrite 83.0 End of Hole										

DIAMOND DRILL RECORD

NAME OF PROPERTY Dicksons Mines Limited
 HOLE NO. 45-5 LENGTH 81.0
 LOCATION S Main Drive West
 LATITUDE 1759.5N DEPARTURE 4556E
 ELEVATION 78+2.0' AZIMUTH 210° DIP -30°
 STARTED _____ FINISHED _____

FOOTAGE	DIP	AZIMUTH	FOOTAGE	DIP	AZIMUTH

HOLE NO. 45-5 SHEET NO. 1
 REMARKS _____
 LOGGED BY CEDesson

FROM	TO	DESCRIPTION	SAMPLE			ASSAYS				
			NO.	SIZE IN FEET	FOOTAGE FROM TO	FOOTAGE TOTAL	%	%	OZ./TON	OZ./TON
0	9.3	Preston Porphyry: pale to medium grey, sericitic, scattered quartz eyes CA 65' Preston Porphyry: pale grey gradations from above. Odd speck pyrite. = 1% quartz in 1/8" fracture 33.2-33.5: 15% quartz in small slices 33.9-34.4: white quartz vein At 43.3: 1/4" grey quartz at 35' At 61.6: 1/8" and 1/4" fuscite at 65' At 68.0: small patch tourmaline 72.0-81.0: porphyry at foot of hole. 81.0 End of Hole	14896	33.2	34.4	1.2			0.071	

DIAMOND DRILL RECORD

NAME OF PROPERTY Diamond Mines Limited
 HOLE NO. 45-6 LENGTH 23'
 LOCATION S Main Drive West
 LATITUDE 75° 59' 5" N DEPARTURE 4656 E
 ELEVATION 7840.5' AZIMUTH 210° DIP -60°
 STARTED _____ FINISHED _____

FOOTAGE	DIP	AZIMUTH	FOOTAGE	DIP	AZIMUTH

HOLE NO. 45-6 SHEET NO. 1
 REMARKS CUF
 LOGGED BY CEDesson

FOOTAGE		DESCRIPTION	SAMPLE				ASSAYS				
FROM	TO		NO.	% SILICA	FROM	TO	TOTAL	%	%	OZ./TON	OZ./TON
0	5.0	Coarse Pyrophyllite to medium grey, scattered quartz eyes up to 1/4". Slightly sericitic. Tru 1/2" Siles quartz. - Carbonate ca 40' 23.0 End of Hole									
5.0	23.0										

DIAMOND DRILL RECORD

NAME OF PROPERTY Depestone Mines Limited
 HOLE NO. 45-7 LENGTH 79'
 LOCATION 5 Main Drive West
 LATITUDE 1772.5N DEPARTURE 4653.5E
 ELEVATION 78+3.0' AZIMUTH 210° DIP 0°
 STARTED _____ FINISHED _____

FOOTAGE	DIP	AZIMUTH	FOOTAGE	DIP	AZIMUTH

HOLE NO. 45-7 SHEET NO. 1
 REMARKS _____
 LOGGED BY C.F. Deason

FOOTAGE FROM	TO	DESCRIPTION	SAMPLE			ANALYSIS				
			NO. & SIZES	FROM	TO	TOTAL	%	%	OZ./TON	OZ./TON
0	79.0	<p> Preston Porphyry: medium to pale grey, fine to medium grained. Lightly veined, moderately sericitic. Scattered quartz eyes up to 1/4". CA 40° 15.0 or: becomes moderately sheared and more highly sericitized. 13.0-15.0: abundant horizontal streaks tourmaline and chlorite. At 13.7 and 14.0: 3/16" streaks irregular quartz-albite. At 14.5: small 5/16 quartz-albite. At 16.1: 3"-80% quartz-albite. At 19.0: small 5/16 quartz-albite. 19.5-20.6: 30% white quartz. Some ground and lost. Sent disseminated pyrite. 21.0-34.0: 10% quartz - quartz - K-feldspar mix in irregular 6/16s up to 1 1/2". 40% quartz eyes increasing. Slightly coarser grained and sheared. 55.0-79.0: 5' core lost in small unmarked sections. At 57.5: slightly muddied. 79.0 End of Hole </p>	14905	13.0	18.0	5.0				
			14906	18.0	21.6	3.6				
			14907	21.6	26.5	4.9				
			14908	26.5	31.5	5.0				
			14909	31.5	34.0	2.5				

SHERIDAN GEOPHYSICS LIMITED
Rock Trenching Program
Deloro Township
Porcupine Mining Division
Ontario

COPY

SUMMARY

A band of Iron Formation (mapped previously) which carries sporadic low gold values in grab samples was sampled by rock trenching.

The values occur in quartz in tension fractures in the Iron Formation.

One old small pit was found in an area of abundant quartz. This pit was enlarged and another one excavated some 400 feet farther west on strike in an area of quartz stringers.

PREVIOUS WORK

One small rock pit was excavated by previous operators - not on record. The area was geologically mapped and geophysically surveyed by the present owners.

PROPERTY AND LOCATION

The property consists of 12 unpatented claims situated in the NE quadrant of Deloro Township. The present work was carried out on claim number P688665.

WORK PERFORMED

Pit No.1: A rock trench was excavated in a swarm of white quartz veins. Dimensions 5' X 3' X 3'. Six muck samples were taken.

APPENDIX "C"

WORK PERFORMED (con'd)

Pit No.2: A rock trench (at site of old small pit) was excavated in a swarm of white quartz veins in Iron Formation. Dimensions (irregular) 15' X 8' X 4' deep. Five grab samples and six muck samples were taken.

ASSAYS

Assays were all low and uneconomic.

See attached assays sheet.

CONCLUSIONS

Nothing of economic importance was found in these areas of abundant primary and secondary quartz.

Respectfully submitted,



C. F. Desson

APPENDICES

- A Pits Location Plan
- B Detailed Sketch Assay Plans (2)
- C Assay Sheet
- D Paid Invoice for Assays

COPY

**GEOPHYSICAL SURVEY
SHERIDAN CLAIM
DELORO TOWNSHIP
PORCUPINE MINING DIVISION OF ONTARIO**

April 2, 1986

APPENDIX "D"

SUMMARY

A single claim in Deloro Tp. was covered by an Electro-magnetic Survey with VLF-EM.

No conductivity was detected.

PREVIOUS WORK

Geophysical surveys were previously carried out with a variety of instruments in this area straddling the Porcupine Destor Fault.

PROPERTY

The one claim numbered P634559 is situated in the NW quadrant of Deloro Tp, Porcupine Mining Division of Ontario.

ACCESSIBILITY

Access is made cross country in winter one mile southwest of Diepdaume Mine.

Summer access is made via bush trail one mile southwest from the Dome Tailings Pond (Private) Road which enters the north-east corner of Deloro Tp.

GEOLOGY

The property straddles the Porcupine Destor Fault and is underlain by the Deloro Group of Archean Rocks consisting of mafic serpentized schists Felsic tuffs and schists, felsic metavolcanics and metasediments (extrapolated from drilling and surface rocks-none on the claim).

GEOPHYSICAL SURVEY

The claim was surveyed with a Geonics VLF-EM16 using Cutler Maine Transmitting station on a frequency of 17.8 KHz. The old grid was rechaind.

No conductivity of importance was detected. Extremely weak responses are due to noise effect probably caused by electrolytic clay and/or serpentinite in the buried fault valley.

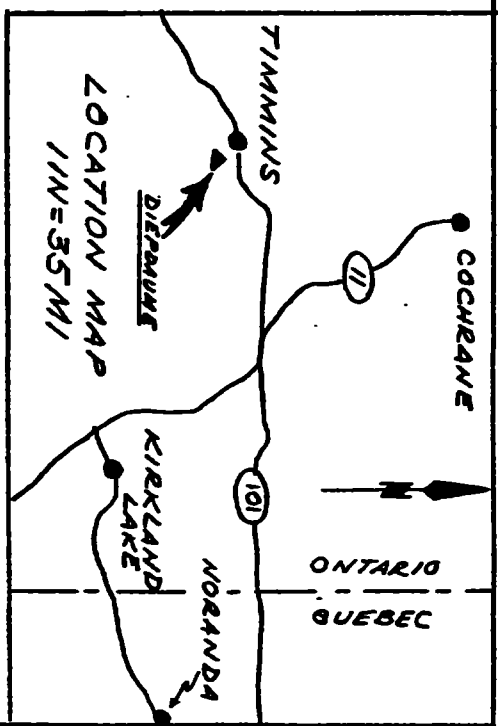
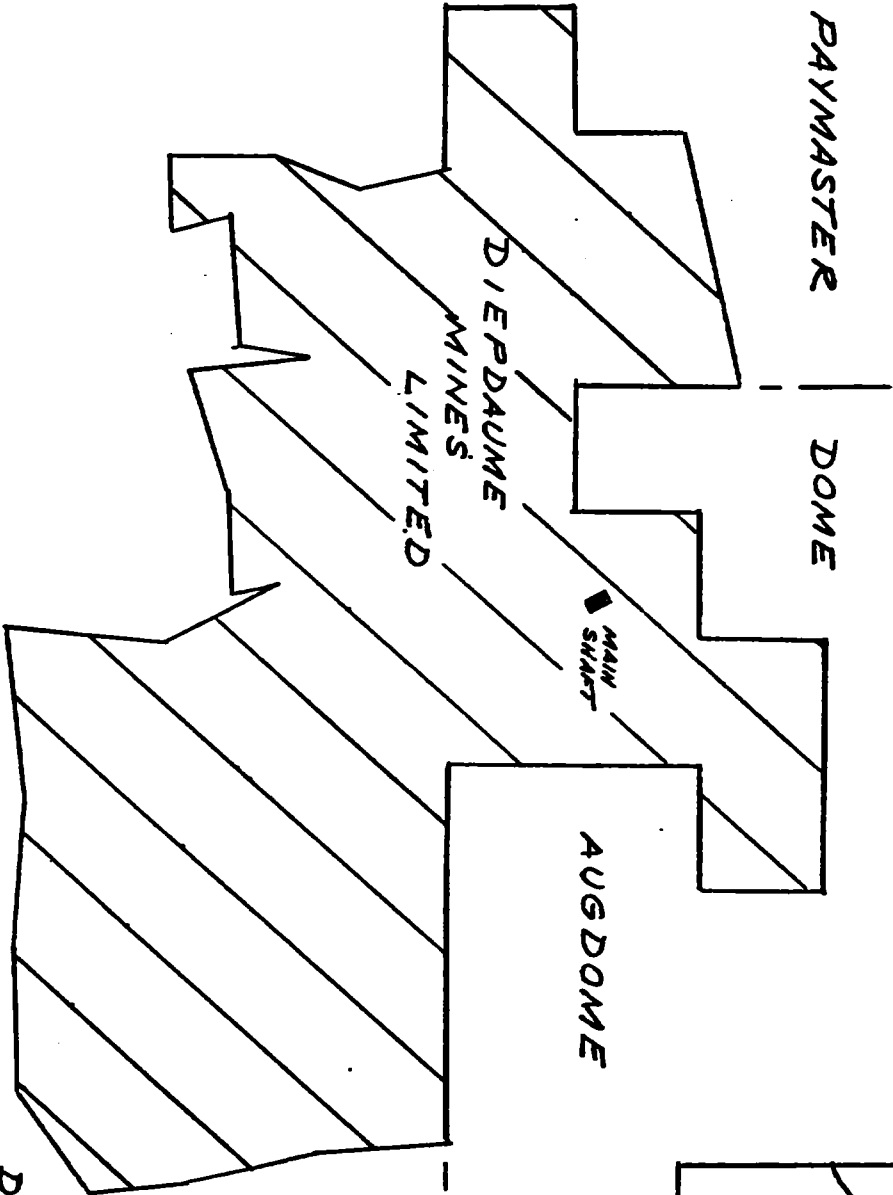
CONCLUSIONS

No conductivity detected.

Respectfully submitted



C. F. Desson

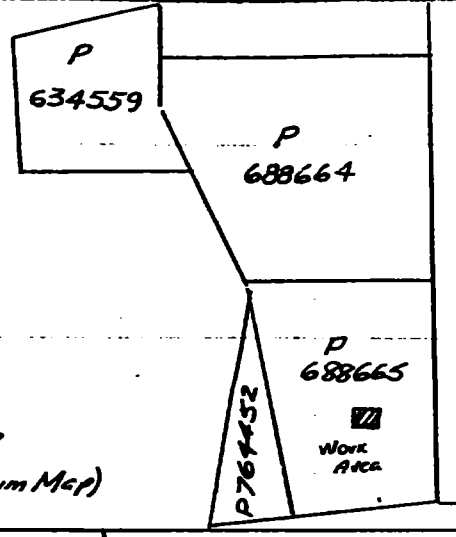
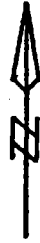


TISDALE TR.
DE LOROTA

DIEPDAUME MINES LIMITED
PROPERTY MAP

TISDALE and DELORO TOWNSHIPS
PORCUPINE MINING DIVISION
ONTARIO
SCALE: 1/1N=2000 FT
JUNE/87

FIG 1



INDEX MAP
(Traced from Claim Map)
1IN = 1320'

L8E

L12E

Pit #2

Pit No 1

Rock Areas

Rock Areas

P688665

P764452

POST 3

POST 2

290'

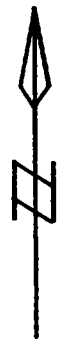
670'

640'

380'

SHOWING No. 1
SHERIDAN CLAIMS
ROCK TRENCHING PLAN
DELORO TOWNSHIP
PORCUPINE MINING DIVISION
ONTARIO
SCALE: 1IN = 200FT JULY 1986

FIG 4
CH



LINE BE

1500'S

Pit #1



SYMBOLS

-  Pit
- B* Muck Samples (Prefix to Number)
- Sample Location

Note: See 200's scale Location Plan

SHOWING No 1
 SHERIDAN CLAIMS
 SAMPLES LOCATION
PIT # 1.

DELORO TOWNSHIP
 PORCUPINE MINING DIVISION
 ONTARIO

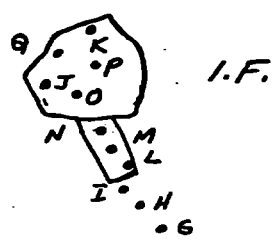
SCALE: 1 IN = 20 FT. JULY 1986
 CLAIM NO. P 6886 (55)

? FIG 4a
 CUP



LINE 12E

1400S

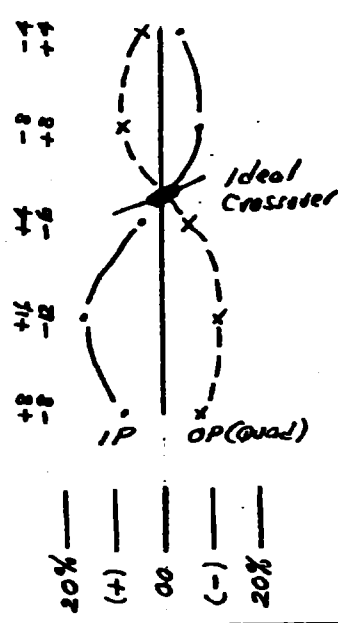
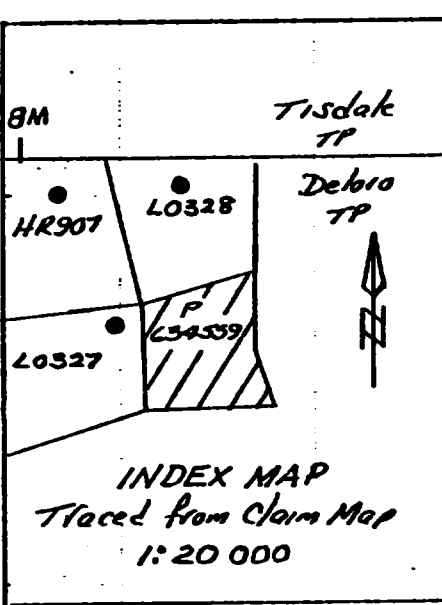
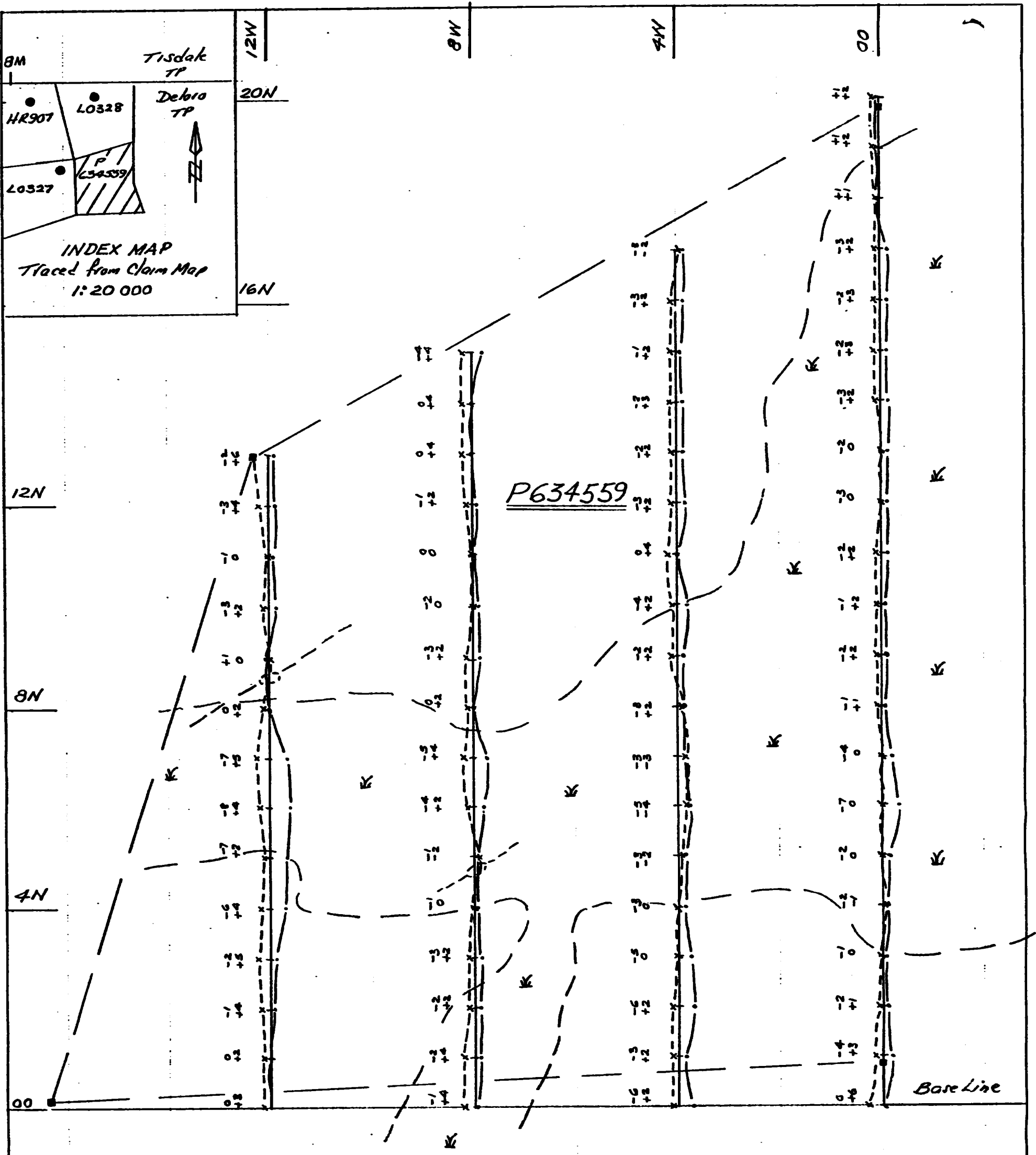


SYMBOLS

G to K - Grab Samples
L to Q - Muck Samples
G etc - Prefix to Sample Number
Note: See 200' scale Location Plan

SHOWING No. 1
SHERIDAN CLAIMS
SAMPLES LOCATION
PIT # 2
DELORO TOWNSHIP
PORCUPINE MINING DIVISION
ONTARIO
SCALE: 1 IN = 20 FT JULY 1986
CLAIM NO. P689 35

? FIG 45
CH



ELECTROMAGNETIC SURVEY
 DELORO TOWNSHIP
 PORCUPINE MINING DIVISION
 ONTARIO

SCALE: 1IN=200FT
 PROFILE SCALE: 1IN=40% (IP 50P)
 INSTR. USED: GEONICS VLF-EM 16
 TRANS. STA: CUTLER MAINE
 FREQ: 178KHZ

— Claim Post, Line
 X Conductor (Weak)
 K Swamp

CWP
 FIG 2

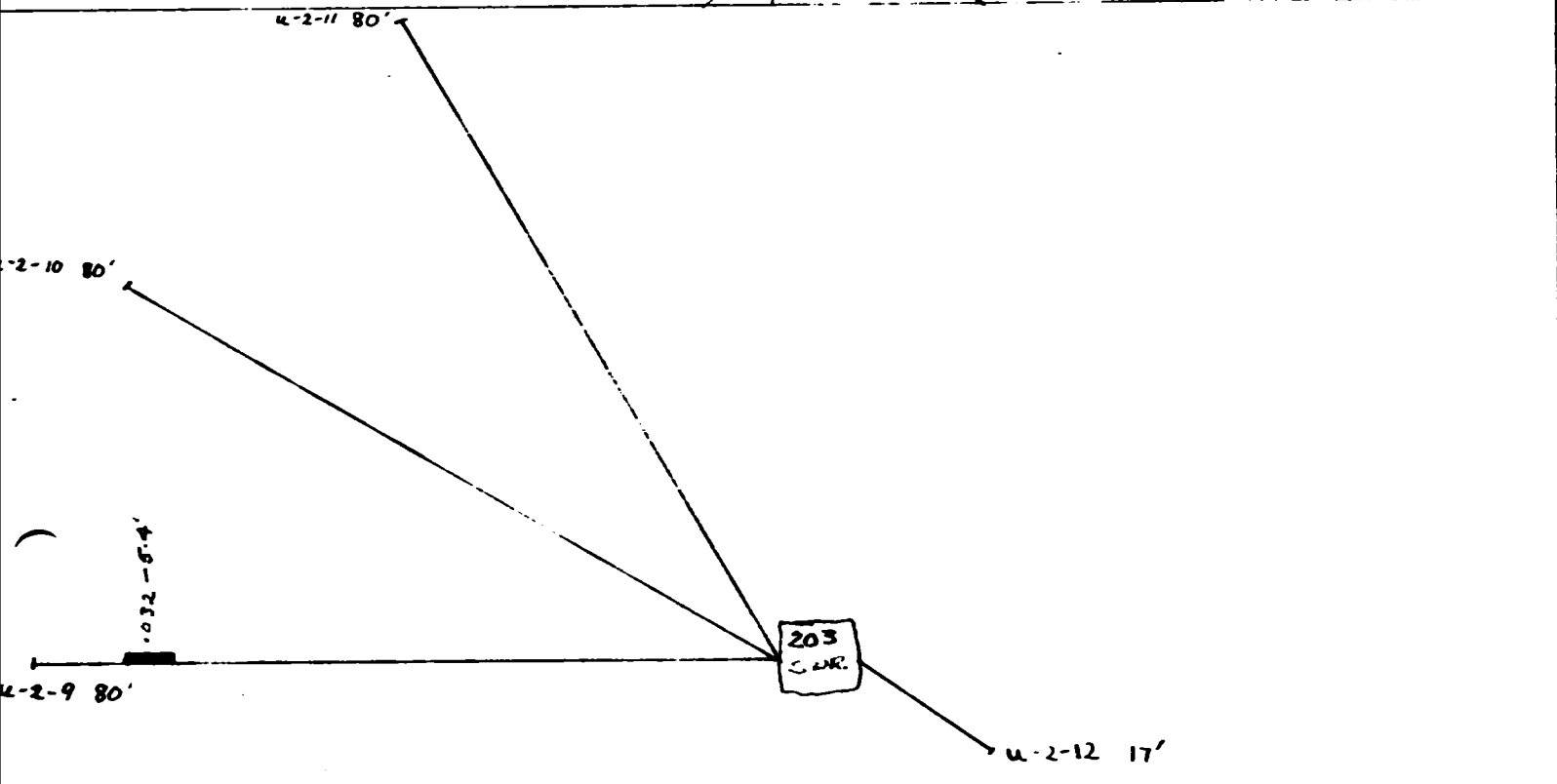
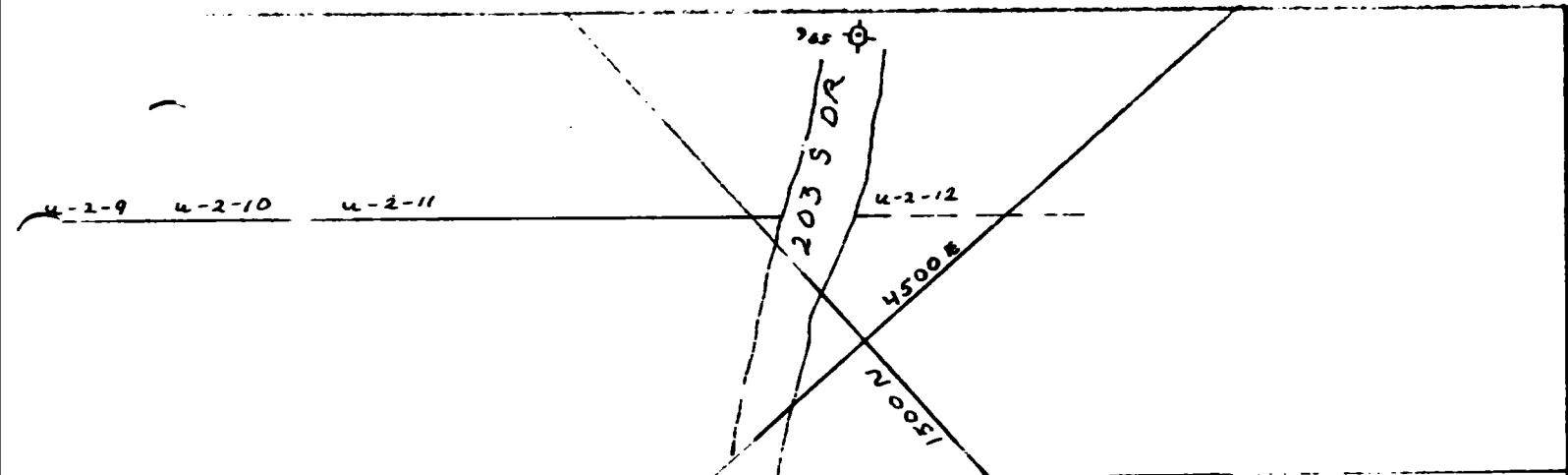


FIG 3

UNDERGROUND DRILLING

LOCATION 203 S DR			
FT DR.		SCALE	1"=20'
TONS		DRAWN	M.P
MACH. S.		CHECKED	CLP
DATE	FEB 1986	DWG. NO.	

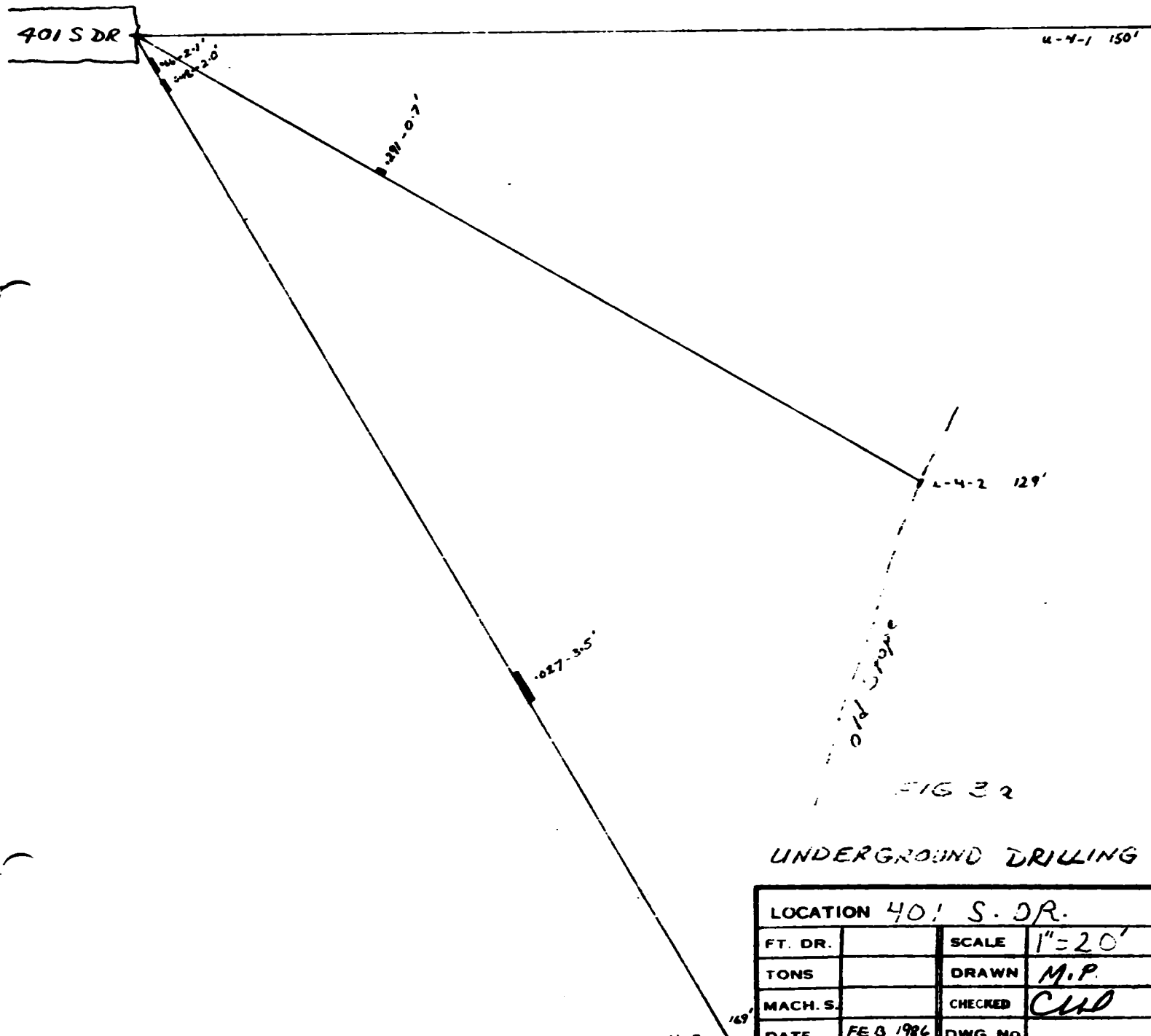
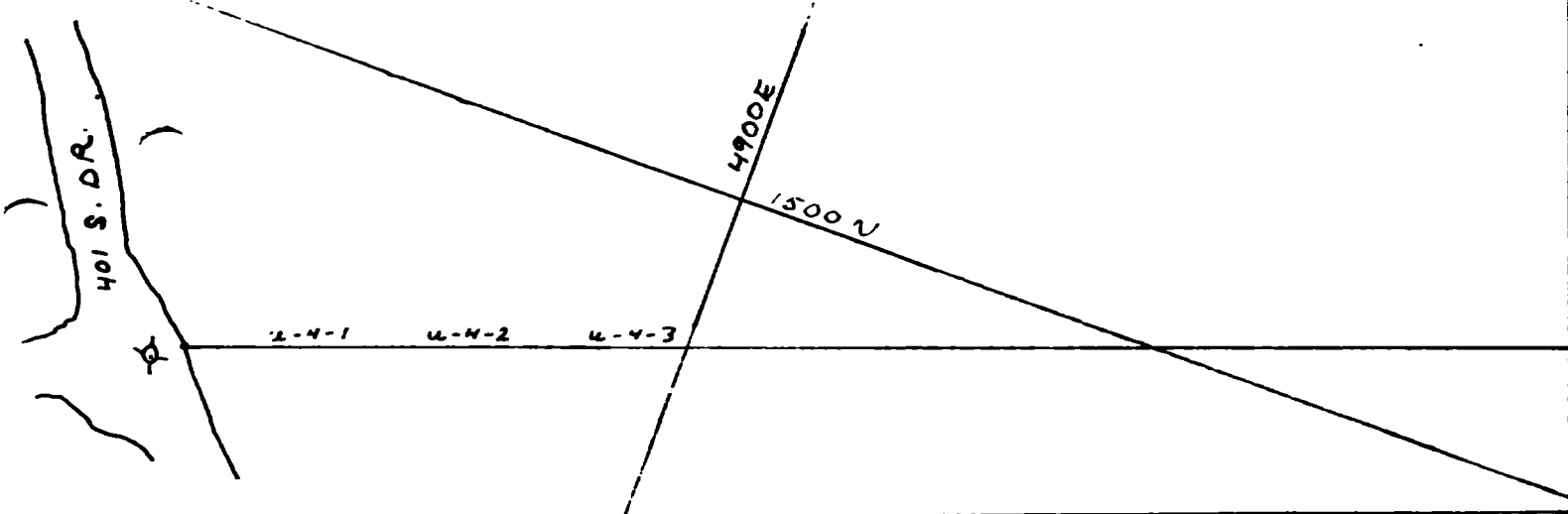


FIG 32

UNDERGROUND DRILLING

LOCATION 401 S. DR.			
FT. DR.		SCALE	1"=20'
TONS		DRAWN	M.P.
MACH. S.		CHECKED	CHD
DATE	FEB 1986	DWG. NO.	

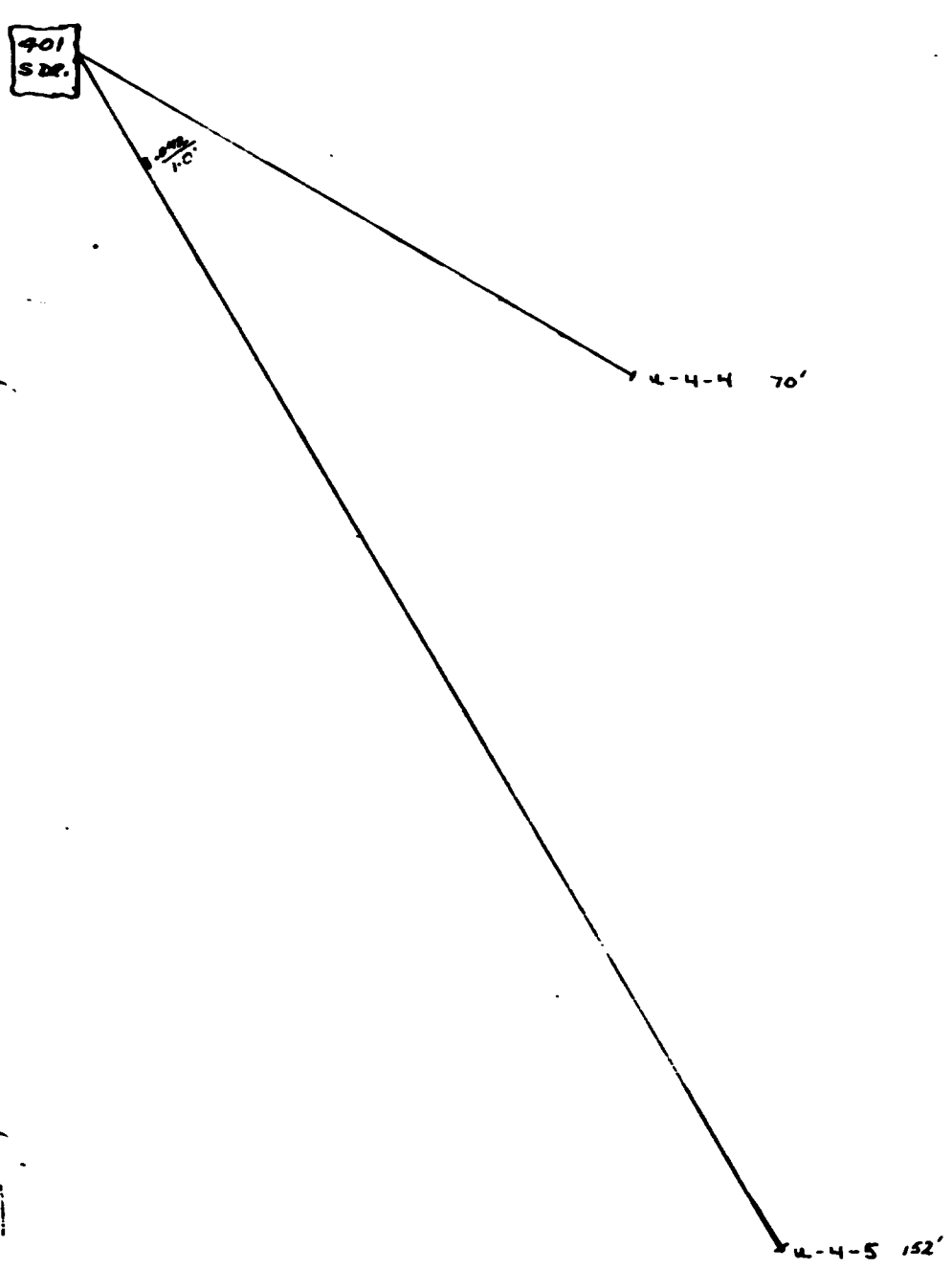
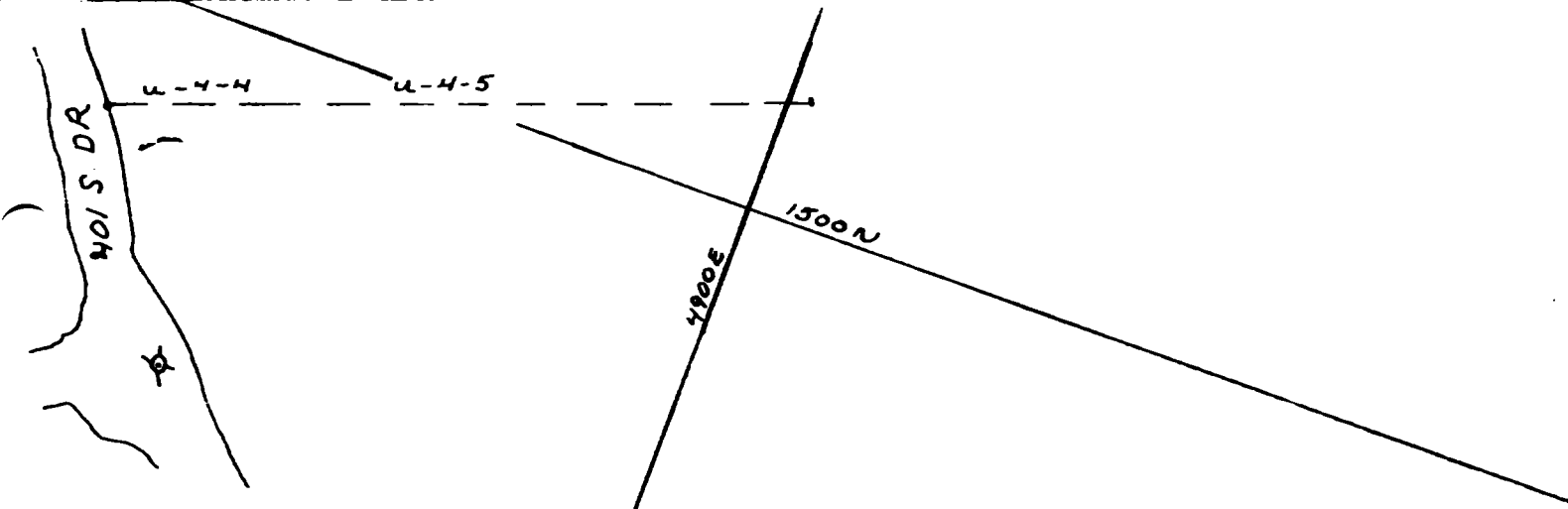


FIG 56

UNDERGROUND DRILLING

LOCATION 401 S. DR.			
FT. DR.		SCALE	1"=20'
TONS		DRAWN	M.P.
MACH. S.		CHECKED	CLW
DATE	FEB 1984	DRG. NO.	

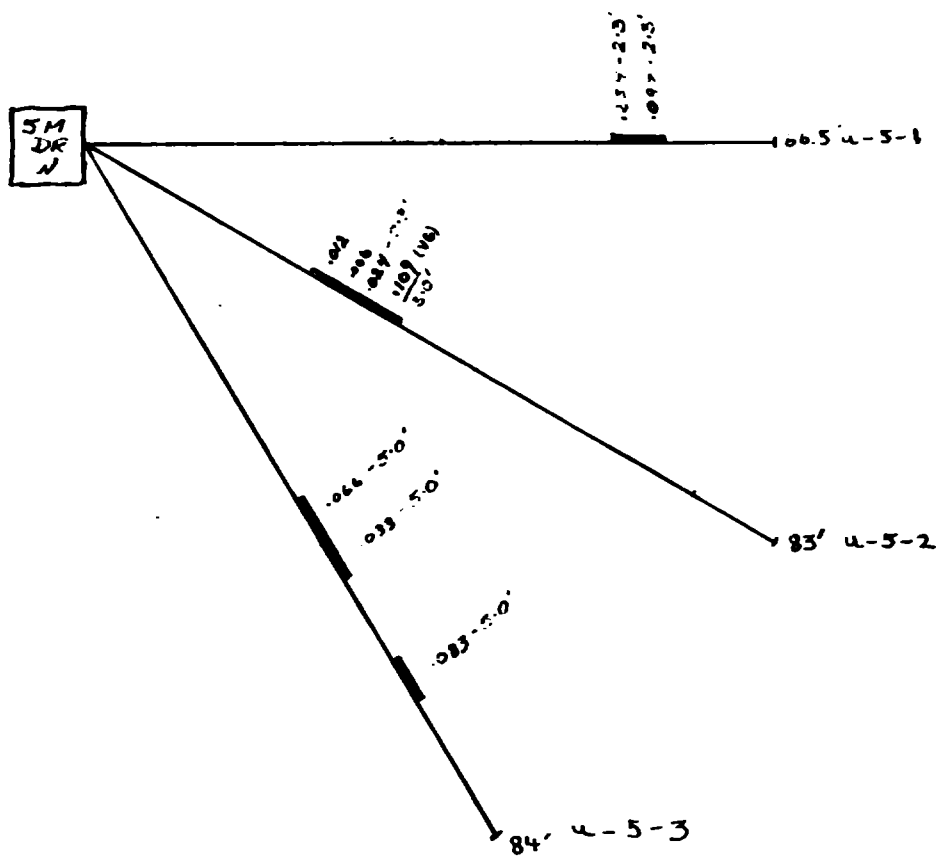
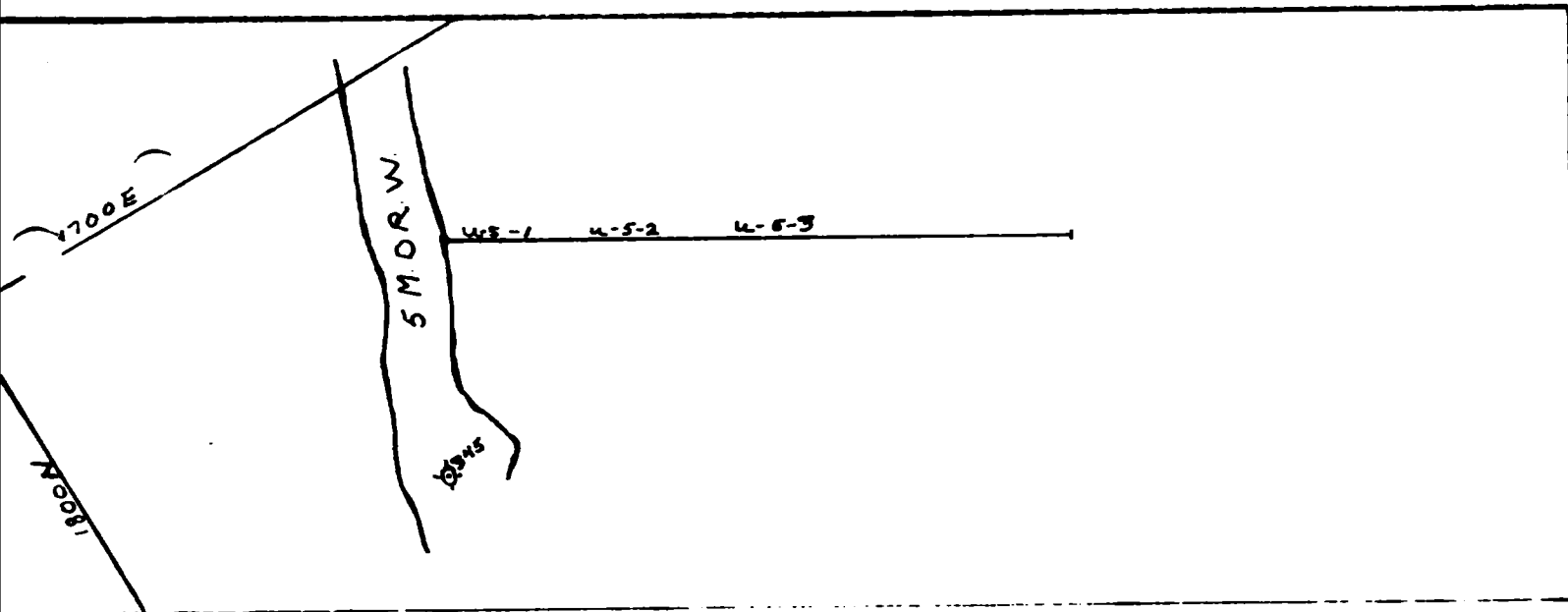


FIG 30

UNDERGROUND DRILLING

LOCATION 5 M D R W			
FT. DR.		SCALE	1"=20'
TONS		DRAWN	M.P.
MACH. S.		CHECKED	CHP
DATE	FEB 1986	DWG. NO.	

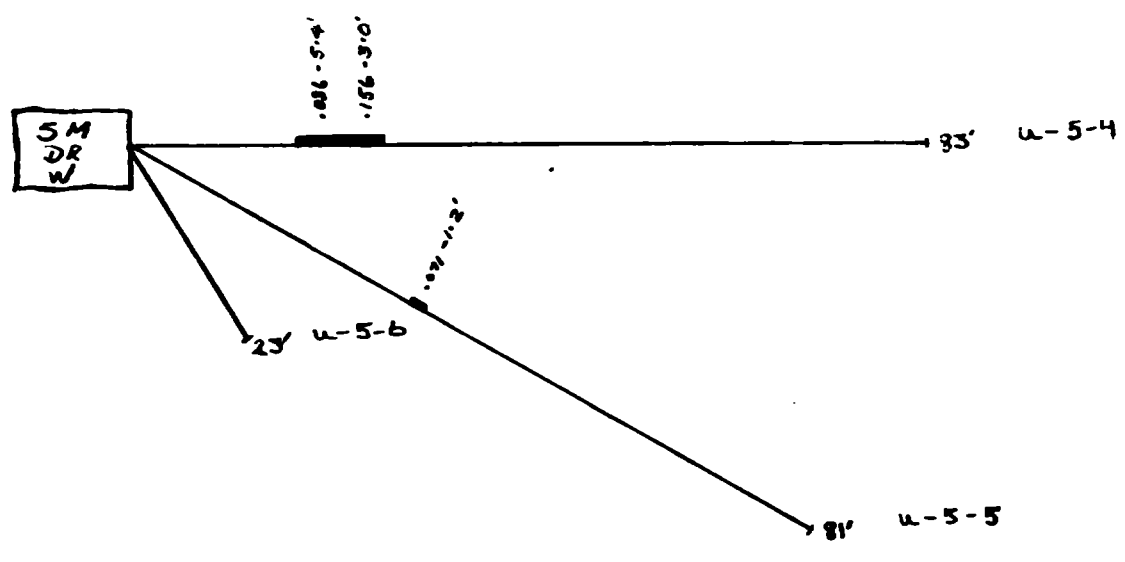
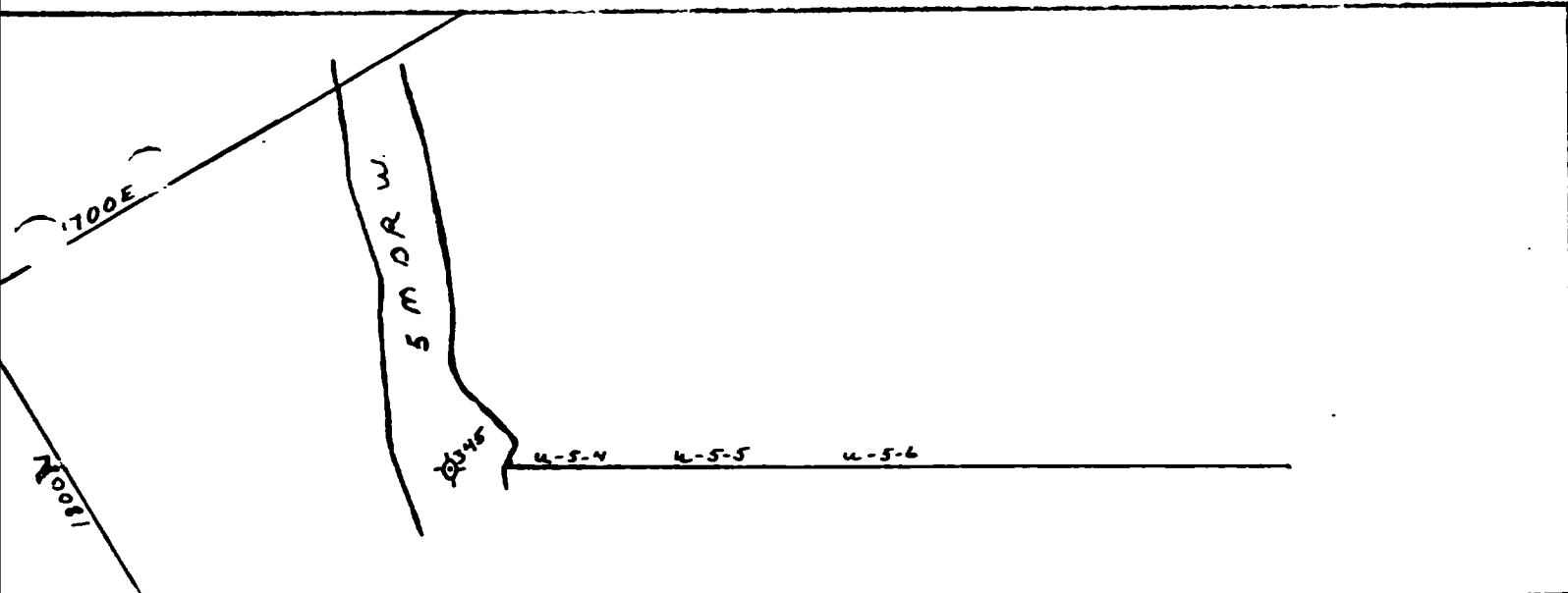


FIG 34

UNDERGROUND DRILLING

LOCATION 5 M DR W			
FT. DR.		SCALE	1"=20'
TONS		DRAWN	M.P.
MACH. S.		CHECKED	CLP
DATE	FEB 1986	DWG. NO.	

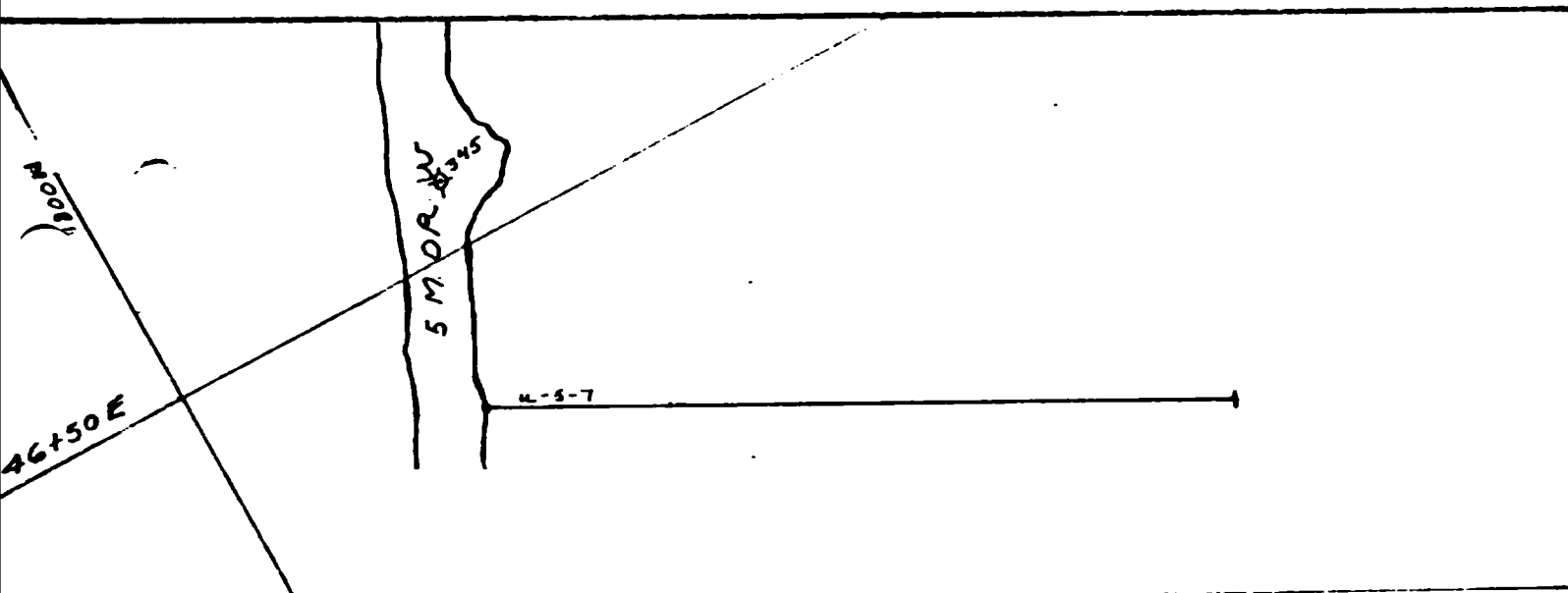


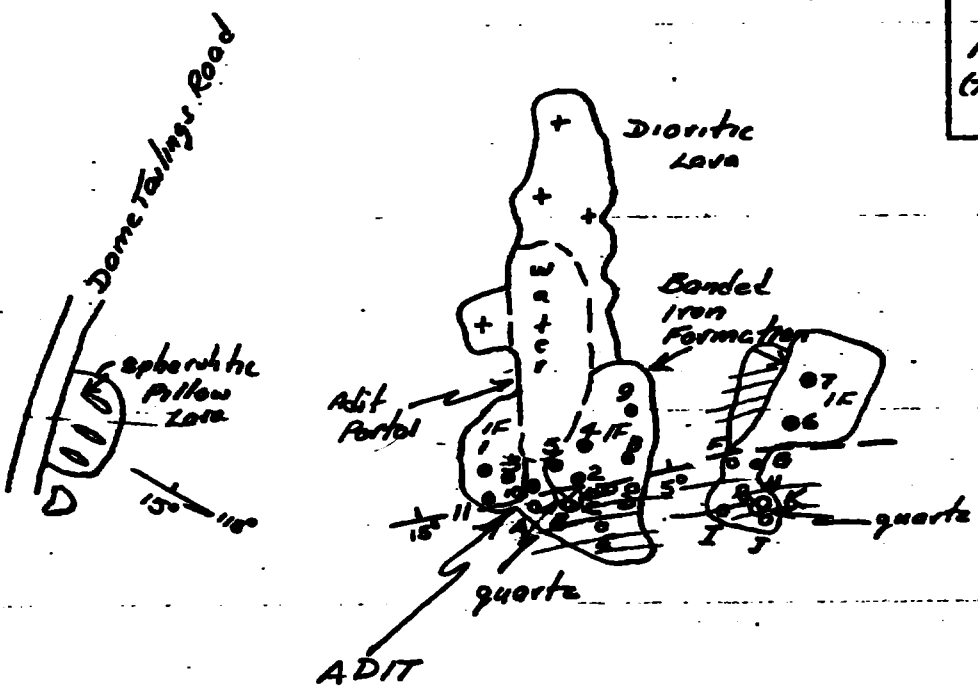
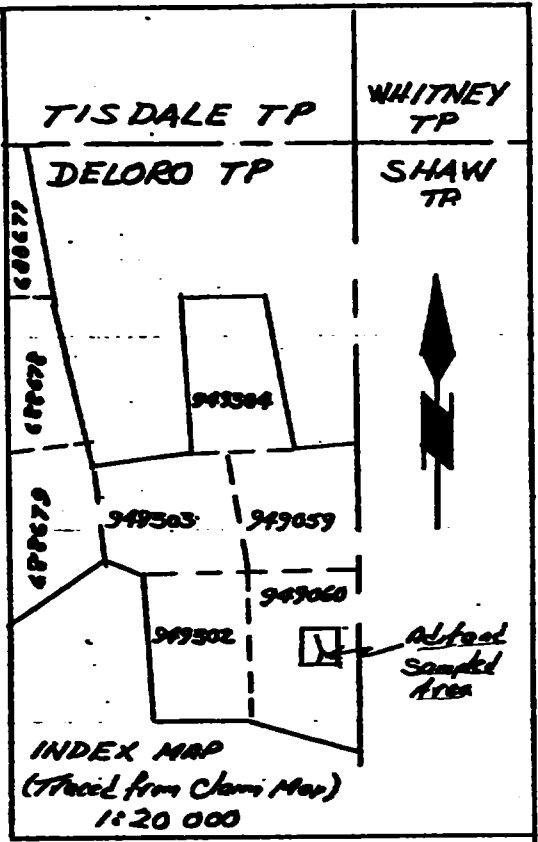
FIG 22

UNDERGROUND DRILLING

LOCATION 5 M D R W			
FT. DR.		SCALE	1" = 20'
TONS		DRAWN	M.P.
MACH. S		CHECKED	CLP
DATE	FEB 1986	DWG. NO.	

LEGEND

- IF Iron Formation
- + + Dioritic Lava
- ≡ Carbonatized Sheared Lava
- ○ Spherulitic Pillow Lava



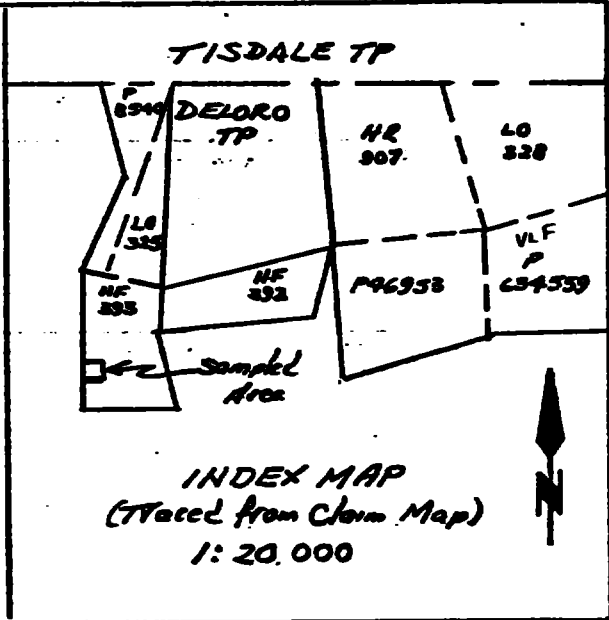
SHOWING No. 2
SAMPLING and GEOLOGY PLAN
IRON FORMATION ADIT AREA
DELORO TOWNSHIP

PORCUPINE MINING DIVISION
 ONTARIO
 SCALE: 1 IN = 40 FT NOV. 1986

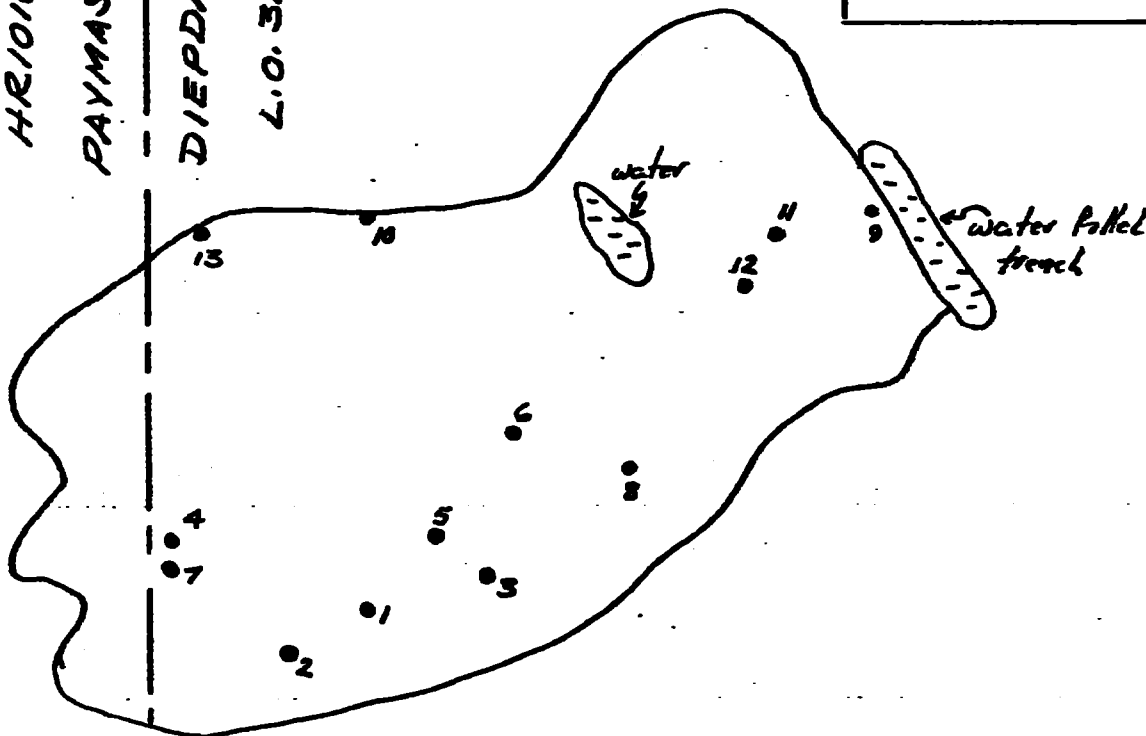
- SYMBOLS**
- IF Samples
 - Carb. Zone + quartz samples.

FIG 4.C

CH



HR1010
PAYMASTER
DIEPDAUME
L.O. 327



SHOWING No. 3

SAMPLING PLAN
CARBONATE ZONE
PAYMASTER EXTENSION EAST
DELORO TOWNSHIP
PORCUPINE MINING DIVISION
ONTARIO

SCALE: 1IN=50FT

NOV. 1986

SYMBOLS

● Sample Location

□ Outcrop Border

FIG 4d

CHP



#63.5248

OH 86-5-C-092

THIS SUBMITTAL CONSISTED OF VARIOUS REPORTS, SOME OF WHICH HAVE BEEN CULLED FROM THIS FILE. THE CULLED MATERIAL HAD BEEN PREVIOUSLY SUBMITTED UNDER THE FOLLOWING RECORD SERIES (THE DOCUMENTS CAN BE VIEWED IN THESE SERIES):

REPORTS WERE NOT CULLED) - THE FOLLOWING COMPARISONS WERE ALLOWED TO REMAIN IN THIS FILE BECAUSE OF THEIR INCLUSION AS APPENDICES.

① APPENDIX "C"

Sheridan Geophysics Ltd., Rock → Toronto file # 2.9344, Reports Trenching Program, C.F. Desson, of Work # 250 & 251 for 1986. No Date.

② APPENDIX "D"

Geophysical Survey, Sheridan → Toronto file # 2.9029, Report of Claim, C.F. Desson, April 2/86. work # 107 for 1986.