

DIAMOND DRILLING



42A06NE0411 27 DELORO

010

TOWNSHIP: Deloro

REPORT No.: 27

WORK PERFORMED BY: J. P. Sheridan

<u>CLAIM No.</u>	<u>HOLE No.</u>	<u>FOOTAGE</u>	<u>DATE</u>	<u>NOTE</u>
P 688677	85DE-1	40'	May/85	(1) (2)
	85DE-2	149'	May/85	(1) (2)
P 688690	85DE-3	150'	May/85	(1) (2)

NOTES: (1) #203-85
(2) LOGS AND LOCATION PLAN SUBMITTED
UNDER OMEP REPORT #OM 84-5C-365,
added to FILE MARCH/89

DIAMOND DRILL RECORD

NAME OF PROPERTY SHERIDAN GEOPHYSICS LTD
 HOLE NO. 85DE-1 LENGTH 40'
 LOCATION Claim P688677 DELORO TP. ONTARIO
 LATITUDE 14+50N DEPARTURE 49+00E
 ELEVATION Surface AZIMUTH 140° DIP -45°
 STARTED May 9/85 FINISHED May 13/85

FOOTAGE	DIP	AZIMUTH	FOOTAGE	DIP	AZIMUTH

85DE-1
 HOLE NO. _____ SHEET NO. 1
 REMARKS Hole broke through
buried scarp into overburden
and abandoned.
 CORE SIZE: AX 13/16"
 LOGGED BY C. F. Desson
Ch. Desson

FOOTAGE		DESCRIPTION	SAMPLE				ASSAYS			
FROM	TO		NO.	% SULPHIDES	FOOTAGE		%	%	OZ/TON	OZ/TON
					FROM	TO				
0	40.0	<p>ANDESITE: fine grained massive. Scattered areas white carbonat-filled spherules. Widely scattered large pillows with fine grained, dark green, chlorite selvages. Abundant elongate chloritic "eyes" up to 2mm throughout. Scant blebs quartz-carbonate plus few seams to 1/2".</p> <p>At 10.8: 3" whitish translucent quartz with minor chlorite and epidote walls.</p> <p>At 40: Hole broke through a buried scarp into overburden.</p> <p>Hole abandoned.</p> <p>40' End of Hole</p>								

DIAMOND DRILL RECORD

NAME OF PROPERTY SHERIDAN GEOPHYSICS LTD
 HOLE NO. 85DE-2 LENGTH 149
 LOCATION Claim P 688677 Deloro Tp. Ontario
 LATITUDE 14+90N DEPARTURE 48+75E
 ELEVATION Surface AZIMUTH 140° DIP -45°
 STARTED May 14/85 FINISHED May 17/85

FOOTAGE	DIP	AZIMUTH	FOOTAGE	DIP	AZIMUTH

85DE-2
 HOLE NO. _____ SHEET NO. 1
 REMARKS Set back to
cut below 85DE-1.
CORE SIZE: AX 1 3/16"
 LOGGED BY C. F. Desson
[Signature]

FOOTAGE		DESCRIPTION	SAMPLE				ASSAYS				
FROM	TO		NO.	% SULPHIDES	FOOTAGE			%	%	OZ/TON	OZ/TON
					FROM	TO	TOTAL				
0	5.0	CASING									
5.0	150.0	<p>ANDESITE: fine grained, massive. Scattered areas with white carbonate filled spherules. Widely scattered large pillows with fine gravel, dark green, chlorite selvages. Abundant elongate chlorite "eyes" up to 2mm throughout. Few thin seams carbonate up to 1/2" with yellowish epidote CA 80°</p> <p>76.0-90.0: porous leached area with irregular carbonate.</p> <p>At 141.0-142.0; 143.7-145.8; 146.1-149.1; Lost Core</p> <p>150.0 End of Hole</p>									

DIAMOND DRILL RECORD

NAME OF PROPERTY SHERIDAN GEOPHYSICS LIMITED
 HOLE NO. 85DE-3 LENGTH 150'
 LOCATION Claim P688690 Deloro Tp. Ontario
 LATITUDE 3+10S DEPARTURE 26+40E
 ELEVATION Surface AZIMUTH 320° DIP -45°
 STARTED May 22/85 FINISHED May 30/85

FOOTAGE	DIP	AZIMUTH	FOOTAGE	DIP	AZIMUTH

HOLE NO. 85DE-3 SHEET NO. 1 of 2
 REMARKS Out of zone at 90.1
 CORE SIZE: AX 1 3/16"
 LOGGED BY C. F. Desson

FOOTAGE		DESCRIPTION	SAMPLE				ASSAYS					
FROM	TO		NO.	% SULPHIDES	FOOTAGE FROM	FOOTAGE TO	FOOTAGE TOTAL	%	%	OZ/TON	OZ/TON	
0	1.0	CASING										
1.0	81.0	QUARTZ-CARBONATE-CHLORITIC TALC SCHIST. Abundant qtz-carbin stringers and blebs. Scant very fine disseminated pyrite throughout plus few coarser blebs. CA 35°-45° 1.0-17.0: 3% qtz-carb. 3.2-3.6: quartz porphyry, fine grained, pale grey, massive 17.0-81.0: 35% qtz-carb up to 2" plus chlorite mix.										
81.0	84.0	TALC-CHLORITE SCHIST. Dark green										
84.0	90.1	Qtz-carb-Chlorite-Talc Schist as at start. Paler greenish grey.										
90.1	100.4	QUARTZ PORPHYRY: pale grey, fine grained, massive. Few specks pyrite.										
100.4	111.9	TALC-CHLORITE SCHIST: 4% carbonate in seams and blebs very fine interstitial magnetite.										
111.9	150.0	SERPENTINIZED VOLCANICS: highly altered with medium grey massive sections bordering on peridotite. 4% white carbonate in seams up to 1". Heavy streaks chlorite in the altered areas. Few specks pyrite and pyrrhotite. Fine interstitial magnetite										

DIAMOND DRILL RECORD

NAME OF PROPERTY _____
 HOLE NO. _____ LENGTH _____
 LOCATION _____
 LATITUDE _____ DEPARTURE _____
 ELEVATION _____ AZIMUTH _____ DIP _____
 STARTED _____ FINISHED _____

FOOTAGE	DIP	AZIMUTH	FOOTAGE	DIP	AZIMUTH

HOLE NO. 85DE-3 SHEET NO. 2 of 2

REMARKS _____

LOGGED BY Chen

FOOTAGE		DESCRIPTION	SAMPLE				ASSAYS			
FROM	TO		NO.	% SULPHIDES	FOOTAGE		%	%	OZ/TON	OZ/TON
					FROM	TO				
111.9	150.0	continued 111.9-115.0: grey, medium grained, talcose or serpentined. 115.0-121.5: Talc-chlorite schist 121.5-135.0: as at 111.9 but harder, less altered 135.0-136.0: as at 115.0 136.0-139.8: med. grey, aluvine rich. borders on gabbro 139.8-150.0: as at start with local talc schist sections 150.0 End of Hole.								



#203/8: W85 06 207

Name and Postal Address of Recorded Holder: J. P. Sheridan, Deloro Sup, M15350, 1404 - 7 King St East, Toronto, Ontario M5C1A2

Summary of Work Performance and Distribution of Credits

Table with columns: Total Work Days Cr. claimed (3.10), Mining Claim Prefix/Number, Work Days Cr., Mining Claim Prefix/Number, Work Days Cr., Mining Claim Prefix/Number, Work Days Cr. Includes checkboxes for Manual Work, Shaft Sinking, etc.

All the work was performed on Mining Claim(s): P-688677 - P-688690

Required Information eg: type of equipment, Names, Addresses, etc. (See Table Below)

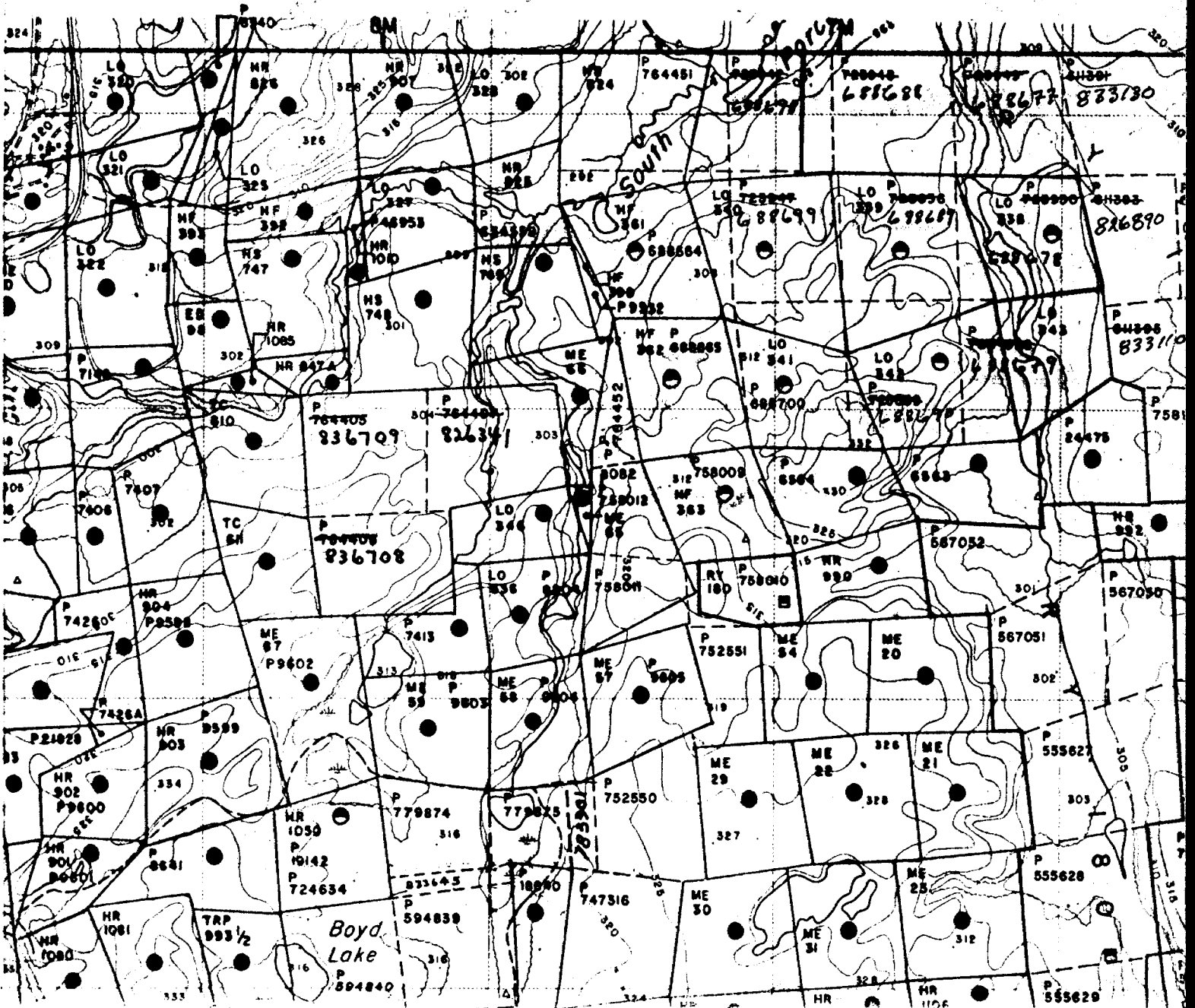
Drill Owner: Diepdaume Mines Limited, Box 1392, Timmins, Ontario P4N 7N2. Drilling Dates: Started May 9, 1985, Finished May 30, 1985. Includes stamps: ONTARIO GEOLOGICAL SURVEY ASSESSMENT FILE RESEARCH OFFICE JUN 28 1985, RECEIVED JUN 12 1985, RECORDED JUN 12 1985.

Certification Verifying Report of Work. I hereby certify that I have a personal and intimate knowledge of the facts set forth in the Report of Work annexed hereto... Name and Postal Address of Person Certifying: Mr. C.F. Desson, Box 1392, Timmins, Ontario P4N 7N2. Date Certified: June 6/85. Certified by (Signature): C. Desson.

Table of Information/Attachments Required by the Mining Recorder. Columns: Type of Work, Specific information per type, Other Information (Common to 2 or more types), Attachments. Rows include Manual Work, Shaft Sinking, Compressed air, Power Stripping, Diamond or other core drilling, Land Survey.

Below Top C - 3993

G-3976



34E

32E

40E

42E

56E

TISDALE TP
DELORO TP

P688677

P688678

P688689

P688679

P688690

BASE LINE OF N

A.S.T.

DELORO TP. DDR #27

LOCATION PLAN
DRILL HOLES
AND
SURFACE SAMPLES
SHERIDAN CLAIMS

DELORO TOWNSHIP
PORCUPINE MINING DIVISION
ONTARIO

SCALE: 1 IN = 200 FT DEC. 20, 1994

UPDATED MAY 1985 *

SYMBOLS

●-45°
84DE-1

Drill Hole direction, depth.

●
2683

Surface Sample location and number.

Chlessa



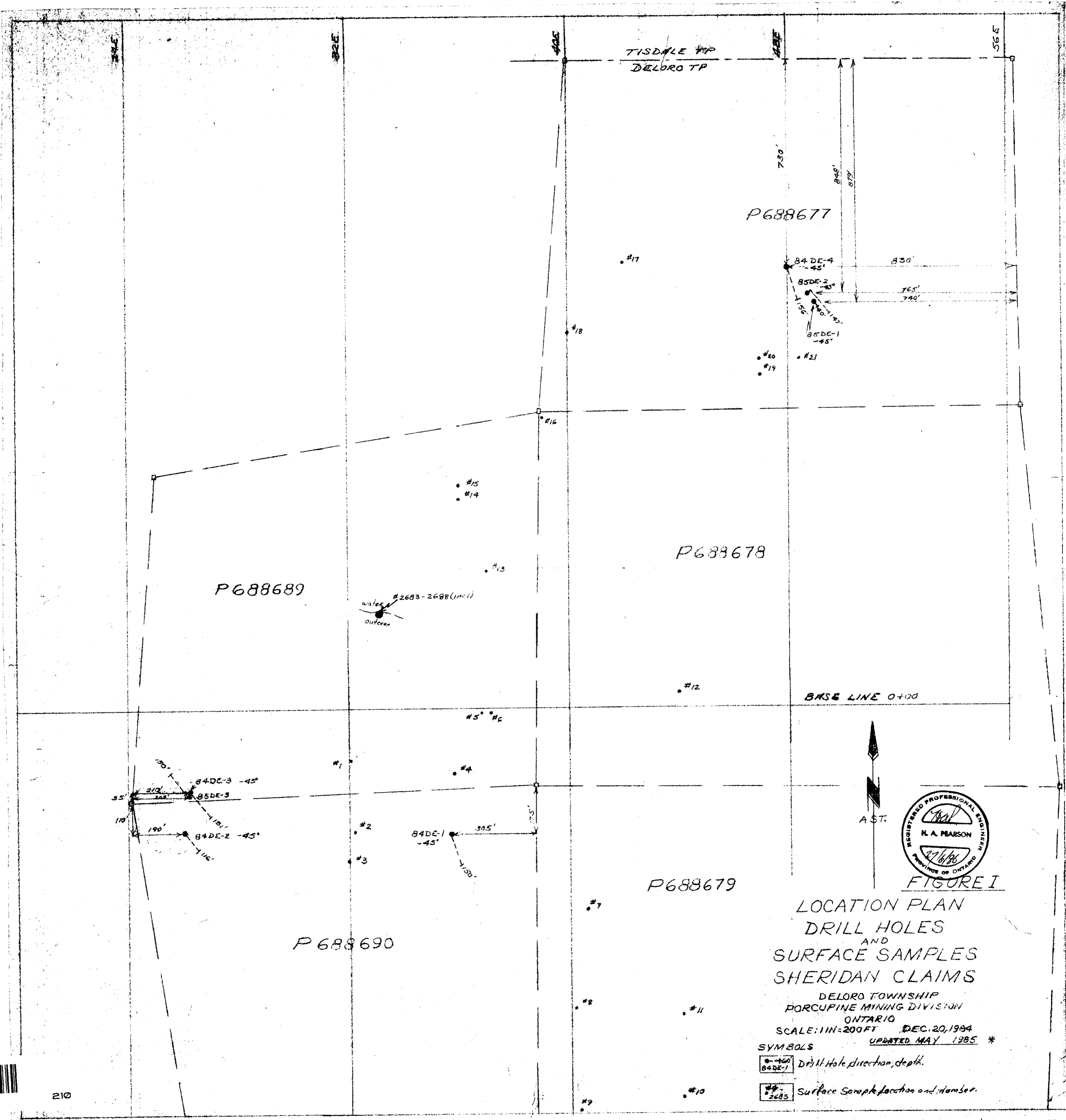
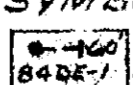
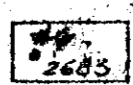
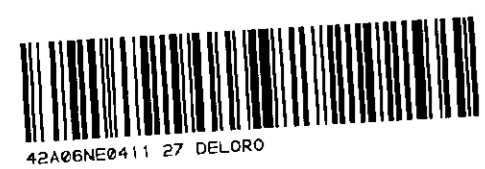


FIGURE I
 LOCATION PLAN
 DRILL HOLES
 AND
 SURFACE SAMPLES
 SHERIDAN CLAIMS
 DELORO TOWNSHIP
 PORCUPINE MINING DIVISION
 ONTARIO
 SCALE: 1 IN = 200 FT DEC. 20, 1984
 UPDATED MAY 1985 *

SYMBOLS
 Drill Hole direction, depth.
 Surface Sample location and number.



210

OM 84-365

DELORO TWP. DR # 27 (208)