

84°

72°



42A06NE2011

2.19098

TISDALE

010

52°

ONTARIO

QUEBEC

Abitibi
Greenstone
Belt

Timmins

**Dome
Mine**

Noranda

Sudbury

North Bay

Ottawa

Toronto


44°

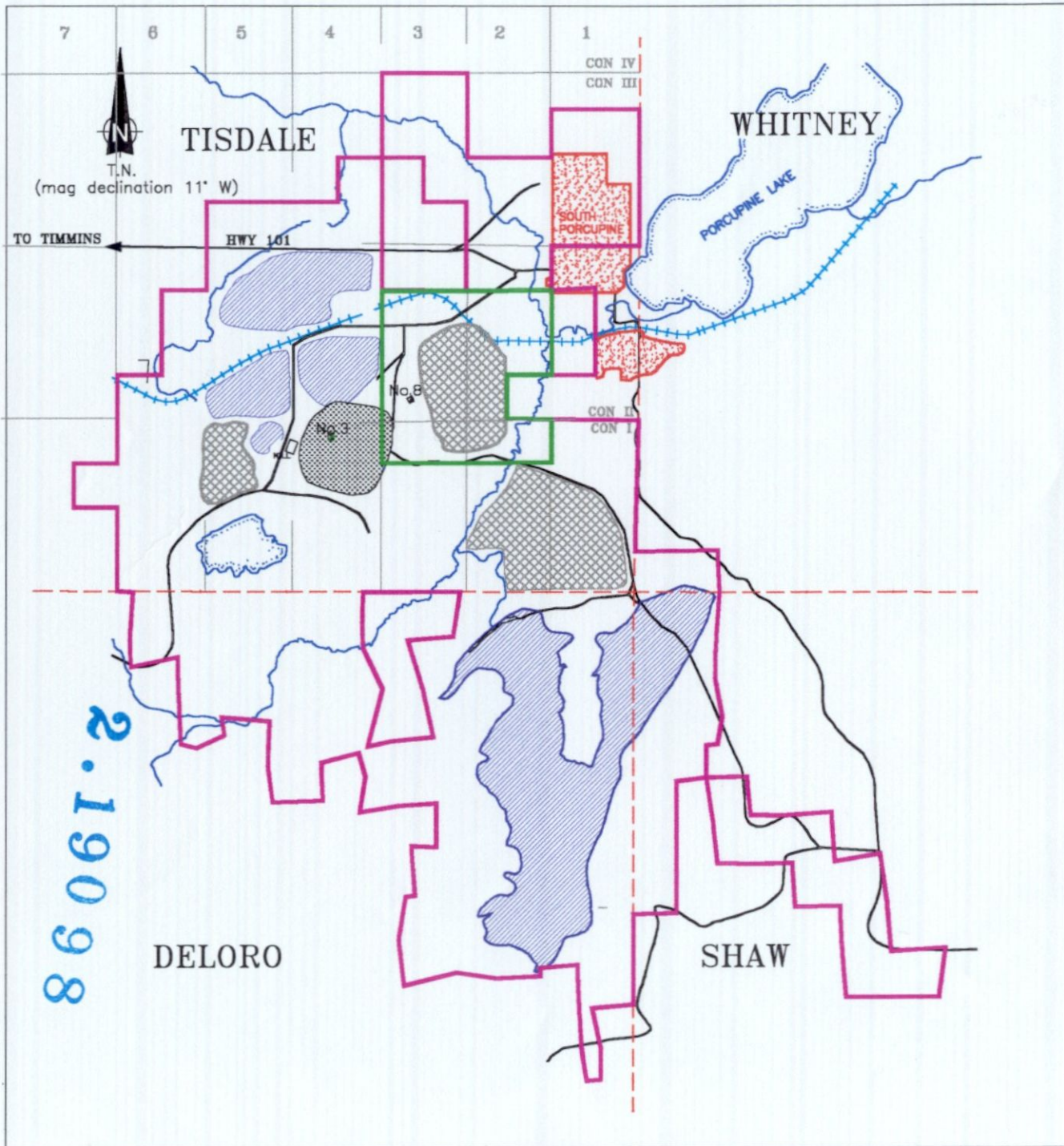
0 100 200 Mi

0 100 200 300 km

U.S.A.

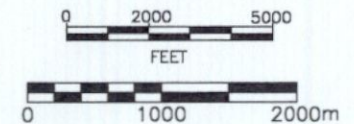
2.19098

	PLACER DOME CANADA LIMITED
DOME MINE	
LOCATION MAP	
FIGURE 1	



LEGEND

SHAW	TOWNSHIP NAME
- - - - -	TOWNSHIP BOUNDARY
—	PROPERTY OUTLINE
—	AREA OF INTEREST
CON III 9	CONCESSION LOT
	EXISTING DOME TAILING DAMS
	WASTE DUMPS
	PIT OUTLINE
	MILL
	MINE SHAFT
	ROAD
	RAILWAY
	TOWNSITE
	CREEK



	PLACER DOME NORTH AMERICA
DOME MINE	
PROPERTY LOCATION MAP	
FIGURE 2	

LEGEND OF LOGGING CODES

GEOLOGY

CAS	Casing
CB	Carb Rock
CON	Conglomerate
DIA	Diabase
FG	Flowy Greenstone
FZ	Fault Zone
GRA	Graphitic Argillite
GWK	Greywacke
HA	Highly Altered
KRF	Krist Fragmental
LC	Lost Core
NL	Not Logged
OVB	Overburden
POR	Porphyry
QZ	Quartz
S/G	Slate/Greywacke
SLT	Slate
TAL	Talc
UG	Uniform Greenstone
UM	Ultramafic

ALTERATION

AB	Albite feldspar
AK	Ankeritization
BI	Biotization
CA	Calcitization
CL	Chloritization
SE	Sericitization
SI	Silicification
TC	Talc Alteration

MINERALIZATION

AG	Silver
AK	Ankerite
AS	Arsenopyrite
AU	Gold
BI	Biotite
CA	Calcite
CP	Chalcopyrite
EP	Epidote
FU	Fuchsite
GA	Galena
HE	Hematite
MT	Magnetite
PO	Pyrrhotite
PY	Pyrite
QZ	Quartz
SD	Siderite
SE	Sericite
SP	Sphalerite
TO	Tourmaline

VEINING

AK	Ankerite
CA	Calcite
PY	Pyrite
QZ	Quartz
QZ-CA	Quartz-Calcite
QZ-FU	Quartz-Fuchsite
QZ-TO	Quartz-Tourmaline

2.19098



PLACER DOME NORTH AMERICA Limited

In Canada, a division of PLACER DOME (CLA) LIMITED

DOME MINE

P.O. BOX 70
SOUTH PORCUPINE, ONTARIO
CANADA
P0N 1H0

DDH: 30086

NORTHING: 7930.48
EASTING: 8780.55
ELEVATION: 1198.89

AZIMUTH: 332.29°
DIP: -0.7°

CLAIM NUMBER: SW ¼ OF N ½, LOT2 CON2, TISDALE TWP. (0 – 850.0' DRILLED)

CORE SIZE: AQTK

DATE STARTED: 16TH JULY '98

DATE FINISHED: 31ST JULY '98

DATE LOGGED: 2ND AUGUST '98

LOGGED BY: R. CLOUGH

LENGTH: 850'

DEPTH TO OVERBURDEN: Not Applicable

LOCATION: 775' EAST AND 11' NORTH OF #3 POST, SW ¼ OF N ½, LOT 2 CON 2,
TISDALE TWP.

DRILLED BY: Major Dominik Drilling
1080 rue de L'Echo
C.P. 247
Val d'Or
Quebec, J9P 4P3

CORE STORAGE LOCATION: WHOLE CORE SAMPLED

REPRESENTATIVE OF COMPANY RESPONSIBLE FOR DRILL PROGRAM:

Placer Dome North America Ltd.
Dome Mine
Linda Gutteridge
Underground Exploration Geologist
P.O. BOX 70
South Porcupine
Ontario, P0N 1H0

2.19098

Signed by Linda Gutteridge, Underground Exploration Geologist, Dome Mine

Placer Dome Canada Limited
Core Log Report
Hole Id: 30086

Workplace: 35827411

Start Date: 07/16/1998

End Date: 07/31/1998

User: npy

Hole Type UG
Northing 7930.48 Easting 8780.549
Elevation 1198.885 Length 850
Comment

Anders Gutteridge

SURVEY INFORMATION

Depth	Incl.	Azimuth Cor.	Test Type	by	Comment
0	-0.7	332.29	ACT	gcg	
500	4.0	333.5	TRO	crs	
800	6.0	335	TRO	rad	
850	5.0	332.29	AT	gcg	

2.19098

Geo	From	To	Sample	From	To	Assay	Fol'n	AK_V	QZ_V	QZ-AK_V	QZ-FU_V	QZ-TO_V	PY%	PO%	Alteration Type Int	Geology/Sample Comments
			E076934	685.00	690.00	0.02	---	---	---	---	---	---	---	---	---	---
			E076935	690.00	695.00	0.06	---	---	---	---	---	---	---	---	---	---
			E076936	695.00	700.00	3.30	---	---	---	---	---	---	---	---	---	q-c stgrs
			E076937	700.00	705.00	0.16	---	---	---	---	---	---	---	---	---	---
			E076938	705.00	710.00	0.02	---	---	---	---	---	---	---	---	---	q-c blebs
			E076939	710.00	715.00	0.02	---	---	---	---	---	---	---	---	---	.5% py
			E076940	715.00	720.00	0.01	50	---	---	---	---	---	---	---	AB	W streached variolites
			E076941	720.00	725.00	0.02	---	---	---	---	---	---	---	---	AB	W q-c blebs
			E076942	725.00	730.00	0.01	---	---	---	---	---	---	---	---	AB	W .5% py
			E076943	730.00	735.00	0.03	---	---	---	---	---	---	---	---	---	2" flt @ 733.5' @ 50 C.A.
			E076944	735.00	740.00	0.06	---	---	---	---	---	---	---	---	---	---
			E076945	740.00	745.00	0.02	---	---	---	---	---	---	---	---	---	variolitic
			E076946	745.00	750.00	0.05	---	---	---	---	---	---	---	---	---	---
			E076947	750.00	755.00	0.11	---	---	---	---	---	---	---	---	---	variolitic
			E076948	755.00	760.00	0.07	---	---	---	---	---	---	0.5	---	---	pillow selvages
			E076949	760.00	765.00	4.47	---	---	---	---	---	---	---	---	---	---
			E076950	765.00	770.00	0.01	---	---	---	---	---	---	---	---	---	---
			E076951	770.00	775.00	0.02	---	---	---	---	---	---	---	---	---	---
			E076952	775.00	780.00	0.01	---	---	---	---	---	---	---	---	---	---
			E076953	780.00	785.00	0.01	---	---	---	---	---	---	---	---	---	---
			E076954	785.00	790.00	0.02	---	---	---	---	---	---	---	---	---	---
			E076955	790.00	795.00	0.01	---	---	---	---	---	---	---	---	---	---
			E076956	795.00	800.00	0.70	---	---	---	---	---	---	---	---	---	---
			E076957	800.00	805.00	0.06	---	---	---	---	---	---	---	---	---	---
			E076958	805.00	810.00	0.01	---	---	---	---	---	---	---	---	---	---
			E076959	810.00	815.00	0.02	---	---	---	---	---	---	---	---	---	---
			E076960	815.00	820.00	0.01	---	---	---	---	---	---	---	---	---	---
			E076961	820.00	825.00	0.01	---	---	---	---	---	---	---	---	---	---
			E076962	825.00	830.00	0.01	---	---	---	---	---	---	---	---	---	---
			E076963	830.00	835.00	0.01	---	---	---	---	---	---	---	---	---	---
			E076964	835.00	840.00	0.03	---	---	---	---	---	---	---	---	---	---
			E076965	840.00	845.00	0.05	---	---	---	---	---	---	---	---	---	---
			E076966	845.00	850.00	0.03	---	---	---	---	---	---	---	---	---	---



PLACER DOME NORTH AMERICA Limited

In Canada, a division of PLACER DOME (CLA) LIMITED

DOME MINE

P.O. BOX 70
SOUTH PORCUPINE, ONTARIO
CANADA
P0N 1H0

DDH: 30087

NORTHING: 7860.62
EASTING: 8687.75
ELEVATION: 1197.65

AZIMUTH: 330.88°
DIP: -1.5°

CLAIM NUMBER: P 13165, TISDALE TWP. (0 – 160.0' DRILLED)
SW ¼, N ½, LOT2, CON2 TISDALE TWP. (160.0 – 852.0' DRILLED)

CORE SIZE: AQTk

DATE STARTED: 23rd SEPTEMBER '98 DATE FINISHED: 30TH SEPTEMBER '98

DATE LOGGED: 2ND OCTOBER '98

LOGGED BY: A. RENAUD

LENGTH: 852'

DEPTH TO OVERBURDEN: Not Applicable

LOCATION: 682' EAST AND 59' SOUTH OF #4 POST, P13165, TISDALE TWP.

DRILLED BY: Major Dominik Drilling
1080 rue de L'Echo
C.P. 247
Val d'Or
Quebec, J9P 4P3

CORE STORAGE LOCATION: WHOLE CORE SAMPLED

REPRESENTATIVE OF COMPANY RESPONSIBLE FOR DRILL PROGRAM:

Placer Dome North America Ltd.
Dome Mine
Linda Gutteridge
Underground Exploration Geologist
P.O. BOX 70
South Porcupine
Ontario, P0N 1H0


Signed by Linda Gutteridge, Underground Exploration Geologist, Dome Mine

Placer Dome Canada Limited
Core Log Report
Hole Id: 30087

Workplace: 35827411

Start Date: 09/23/1998

End Date: 09/30/1998

User: npy

Hole Type UG
Northing 7860.616 Easting 8687.752
Elevation 1197.653 Length 852
Comment

SURVEY INFORMATION						
Depth	Incl.	Azimuth	Cor.	Test Type	by	Comment
0	-1.5	330.88		ACT	gcg	
250	-2.0	323		TRO	rad	
500	4.0	343		TRO	rad	
850	3.0	332.5		TRO	rad	

Linda Gutteridge

2.19098

Geo	From	To	Sample	From	To	Assay	Fol'n	AK_V	QZ_V	QZ-AK_V	QZ-FU_V	QZ-TO_V	PY%	PO%	Alteration Type	Int	Geology/Sample Comments
			E086150	215.00	220.00	0.02	---	---	---	---	---	---	---	---	---	---	c-q strgrs
			E086151	220.00	225.00	0.07	---	---	---	---	---	---	---	---	---	---	
			E086152	225.00	230.00	0.05	---	---	---	---	---	---	---	---	---	---	c-q strgrs
			E086153	230.00	235.00	0.05	---	---	---	---	---	---	---	---	---	---	
			E086154	235.00	240.00	0.01	---	---	---	---	---	---	---	---	---	---	c-q strgrs
			E086155	240.00	245.00	0.04	---	---	---	---	---	---	0.5	---	---	---	c-q bleb
			E086156	245.00	250.00	0.06	---	---	---	---	---	---	---	---	---	---	c-q strgrs
			E086157	250.00	255.00	0.02	---	---	---	---	---	---	0.5	---	---	---	
			E086158	255.00	260.00	0.03	---	---	---	---	---	---	---	---	---	---	c-q strgr
			E086159	260.00	265.00	0.01	---	---	---	---	---	---	---	---	---	---	c-q strgr
			E086160	265.00	270.00	0.07	---	---	---	---	---	---	0.5	---	---	---	c-q strgr
			E086161	270.00	275.00	1.80	---	---	---	---	---	---	1.0	---	---	---	c-q strgrs
			E086162	275.00	280.00	0.01	---	---	---	---	---	---	---	---	---	---	c-q bleb&strgr
			E086163	280.00	285.00	0.01	---	---	---	---	---	---	0.5	---	---	---	c-q bleb
			E086164	285.00	290.00	0.01	---	---	---	---	---	---	0.5	---	---	---	c-q strgrs
			E086165	290.00	295.00	0.19	---	---	---	---	---	---	1.0	---	---	---	c-q strgrs,q-a strgr
			E086166	295.00	300.00	1.16	---	---	---	---	---	---	1.5	---	---	---	tr sph,q-a strgrs
			E086167	300.00	305.50	4.92	---	---	---	---	---	---	1.5	---	---	---	tr sph,ptchy weak alb'n
			E086168	305.50	310.00	0.23	---	---	---	---	---	---	1.0	---	---	---	ptchy weak alb'n,c-q strgrs
			E086169	310.00	315.00	0.02	---	---	---	---	---	---	0.5	---	---	---	
			E086170	315.00	320.00	0.05	---	---	---	---	---	---	0.5	---	---	---	
			E086171	320.00	325.00	0.01	---	---	---	---	---	---	---	---	---	---	c-q strgrs
			E086172	325.00	330.00	0.05	---	---	---	---	---	---	---	---	---	---	
			E086173	330.00	335.00	0.02	---	---	---	---	---	---	---	---	---	---	
			E086174	335.00	340.00	0.01	---	---	---	---	---	---	---	---	---	---	
			E086175	340.00	345.00	0.02	---	---	---	---	---	---	---	---	---	---	
			E086176	345.00	350.00	0.06	---	---	---	---	---	---	---	---	---	---	
			E086177	350.00	355.00	0.03	52	---	---	---	---	---	---	---	---	---	
			E086178	355.00	360.00	0.05	---	---	---	---	---	---	0.5	---	---	---	
			E086179	360.00	365.00	0.01	---	---	---	---	---	---	---	---	---	---	
			E086180	365.00	370.00	0.03	---	---	---	---	---	---	---	---	---	---	
			E086181	370.00	375.00	0.01	---	---	---	---	---	---	---	---	---	---	calc bleb
			E086182	375.00	380.00	0.25	---	---	---	---	---	---	---	---	---	---	
			E086183	380.00	385.00	0.01	---	---	---	---	---	---	---	---	---	---	
			E086184	385.00	390.00	0.09	---	---	---	---	---	---	---	---	---	---	
			E086185	390.00	395.00	0.04	---	---	---	---	---	---	---	---	---	---	calc bleb
			E086186	395.00	400.00	0.01	---	---	---	---	---	---	---	---	---	---	c-q strgrs
			E086187	400.00	405.00	0.05	---	---	---	---	---	---	---	---	---	---	
			E086188	405.00	410.00	0.01	---	---	---	---	---	---	---	---	---	---	q-c strgr
			E086189	410.00	415.00	0.01	---	---	---	---	---	---	---	---	---	---	
			E086190	415.00	420.00	0.01	---	---	---	---	---	---	---	---	---	---	c-q strgrs
			E086191	420.00	425.00	0.01	60	---	---	---	---	---	---	---	---	---	c-q strgrs
			E086192	425.00	427.50	0.25	---	---	---	---	---	---	1.5	4.0	AB	W	q-c strgr
			E086193	427.50	435.00	0.83	---	---	---	---	---	---	---	---	---	---	c-q strgr
			E086194	435.00	440.00	0.01	---	---	---	---	---	---	0.5	---	---	---	
			E086195	440.00	445.00	0.67	---	---	---	---	---	---	0.5	1.0	AB	W	
			E086196	445.00	450.00	0.23	---	---	---	---	---	---	0.5	---	AB	W	tr po,q-a-c strgr
			E086197	450.00	455.00	0.31	---	---	---	---	---	---	0.5	0.5	AB	W	q-a strgr
			E086198	455.00	460.00	1.14	---	---	---	---	---	---	0.5	0.5	AB	W	q-a-c strgrs

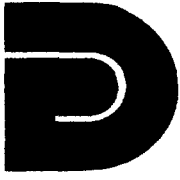
Workplace: 35827411

Start Date: 09/23/1998

End Date: 09/30/1998

Geo	From	To	Sample	From	To	Assay	Fol'n	AK_V	QZ_V	QZ-AK_V	QZ-FU_V	QZ-TO_V	PY%	PO%	Alteration Type Int	Geology/Sample Comments
			E086239	660.00	665.00	0.05	---	---	---	---	---	---	---	---	---	---
			E086240	665.00	670.00	0.01	---	---	---	---	---	---	---	---	---	---
			E086241	670.00	675.00	0.01	---	---	---	---	---	---	---	---	---	---
			E086242	675.00	680.00	0.01	---	---	---	---	---	---	---	---	---	---
			E086243	680.00	685.00	0.01	---	---	---	---	---	---	---	---	---	---
			E086244	685.00	690.00	0.01	---	---	---	---	---	---	---	---	---	---
			E086245	690.00	695.00	0.01	---	---	---	---	---	---	---	---	---	---
			E086246	695.00	700.00	0.01	---	---	---	---	---	---	---	---	---	---
			E086247	700.00	705.00	0.02	---	---	---	---	---	---	---	---	---	---
			E086248	705.00	710.00	0.01	---	---	---	---	---	---	---	---	---	---
			E086249	710.00	715.00	0.01	---	---	---	---	---	---	---	---	---	---
			E086250	715.00	720.00	0.02	---	---	---	---	---	---	---	---	---	---
			E086251	720.00	725.00	0.01	---	---	---	---	---	---	---	---	---	---
			E086252	725.00	730.00	0.01	---	---	---	---	---	---	---	---	---	---
			E086253	730.00	735.00	0.02	---	---	---	---	---	---	---	---	---	---
			E086254	735.00	740.00	0.38	---	---	---	---	---	---	---	---	---	c-q strgr
FG	743.50	790.00	E086255	740.00	743.50	0.01	---	---	---	---	---	---	0.5	---	---	fault@742.2 gradational contact, s.a.a., weakly bitized, non-magnetic
			E086256	743.50	750.00	0.04	---	---	---	---	---	---	1.0	---	---	c-q strgr
			E086257	750.00	755.00	0.05	55	---	---	---	---	---	---	---	---	---
			E086258	755.00	760.00	0.12	---	---	---	---	---	---	0.5	---	---	1'grind
			E086259	760.00	765.00	0.01	---	---	---	---	---	---	---	---	---	c-q strgr
			E086260	765.00	770.00	0.01	---	---	---	---	---	---	---	---	---	---
			E086261	770.00	776.00	0.13	---	---	---	---	---	14.0	---	---	---	---
			E086262	776.00	780.00	0.01	60	---	---	---	---	---	---	---	---	---
			E086263	780.00	785.00	0.01	---	---	---	---	---	---	---	---	---	q-a-c strgr
UG	790.00	820.00	E086264	785.00	790.00	0.05	---	---	---	---	---	---	---	---	---	gradational contact, s.a.a.
			E086265	790.00	795.00	0.01	---	---	---	---	---	---	---	---	---	---
			E086266	795.00	800.00	0.02	---	---	---	---	---	---	---	---	---	---
			E086267	800.00	805.00	0.01	---	---	---	---	---	---	---	---	---	---
			E086268	805.00	810.10	0.01	---	---	---	---	---	---	---	---	---	c-q strgrs
			E086269	810.10	815.00	0.21	---	---	---	---	---	---	---	---	---	c-q strgr
FG	820.00	852.00	E086270	815.00	820.00	0.01	---	---	---	---	---	---	---	---	---	gradational contact, s.a.a., non-magnetic c-q strgr, loc blocky
			E086271	820.00	825.00	0.01	---	---	---	---	---	---	---	---	---	---
			E086272	825.00	830.00	0.15	---	---	---	---	---	---	---	---	---	---
			E086273	830.00	835.00	0.01	---	---	---	---	---	---	1.0	---	---	q-a-c bleb
			E086274	835.00	840.00	0.08	---	---	---	3.0	---	---	---	---	---	q-a strgrs
			E086275	840.00	845.00	0.02	---	---	---	---	---	---	---	---	---	---
			E086276	845.00	852.00	0.14	---	---	---	---	---	---	---	---	---	---

- EOH -



PLACER DOME NORTH AMERICA Limited

In Canada, a division of PLACER DOME (CLA) LIMITED

DOME MINE

P.O. BOX 70
SOUTH PORCUPINE, ONTARIO
CANADA
P0N 1H0

DDH: 30368

NORTHING: 6282.40
EASTING: 6676.08
ELEVATION: 1500.26

AZIMUTH: 327.45°
DIP: +2.7°

CLAIM NUMBER: P 13187, TISDALE TWP. (0 – 30.0' DRILLED)
P 13192, TISDALE TWP. (30.0 - 405.0' DRILLED)
P 13189, TISDALE TWP. (405.0 – 824.0' DRILLED)

CORE SIZE: AQTK

DATE STARTED: 4TH OCTOBER '98

DATE FINISHED: 15TH OCTOBER '98

DATE LOGGED: 17TH OCTOBER '98

LOGGED BY: P. LAUDER

LENGTH: 824'

DEPTH TO OVERBURDEN: Not Applicable

LOCATION: 16' EAST AND 339' SOUTH OF #4 POST, P13187, TISDALE TWP.

DRILLED BY: Major Dominik Drilling
1080 rue de L'Echo
C.P. 247
Val d'Or
Quebec, J9P 4P3

CORE STORAGE LOCATION: WHOLE CORE SAMPLED

REPRESENTATIVE OF COMPANY RESPONSIBLE FOR DRILL PROGRAM:

Placer Dome North America Ltd.
Dome Mine
Linda Gutteridge
Underground Exploration Geologist
P.O. BOX 70
South Porcupine
Ontario, P0N 1H0

Signed by Linda Gutteridge, Underground Exploration Geologist, Dome Mine

Placer Dome Canada Limited

Core Log Report

Hole Id: 30368

Workplace: 334011

Start Date: 10/04/1998

End Date: 10/15/1998

User: npy

Hole Type UG
Northing 6282.401 Easting 6676.077
Elevation 1500.264 Length 824
Comment prog # 98-56. Drift 3340

SURVEY INFORMATION

Depth	Incl.	Azimuth Cor.	Test Type	by	Comment
0	2.7	327.45	ACT	gcg	
400	7.0	326	TRO	cgg	
820	9.0	327	TRO	cgg	

Linda Guttridge

2.19098

Workplace: 334011

Start Date: 10/04/1998

End Date: 10/15/1998

Geo	From	To	Sample	From	To	Assay	Fol'n	AK_V	QZ_V	QZ-AK_V	QZ-FU_V	QZ-TO_V	PY%	PO%	Alteration Type	Int	Geology/Sample Comments
			E082400	470.00	475.00	0.01	---	---	---	---	---	---	---	---	---	---	
			E082402	475.00	480.00	0.01	---	---	---	---	---	---	---	---	---	---	
			E082403	480.00	485.00	0.01	---	---	---	---	---	---	---	---	---	---	
			E082404	485.00	490.00	0.01	---	---	---	---	---	---	---	---	---	---	
			E082405	490.00	495.00	0.01	---	---	---	---	---	---	---	---	---	---	
			E082406	495.00	500.00	0.02	---	---	---	---	---	---	---	---	---	---	
			E082407	500.00	505.00	0.01	---	---	---	---	---	---	---	---	---	---	
			E082408	505.00	510.00	0.01	---	---	---	---	---	---	---	---	---	---	
			E082409	510.00	515.00	0.01	---	---	---	---	---	---	1.0	---	---	---	py in qv
			E082410	515.00	520.00	0.01	---	---	---	---	---	---	0.5	---	---	---	
			E082411	520.00	525.00	0.01	---	---	---	---	---	---	---	---	---	---	
			E082412	525.00	530.00	0.01	---	---	---	---	---	---	---	---	---	---	
			E082413	530.00	535.00	0.01	---	---	---	---	---	---	---	---	---	---	
			E082414	535.00	540.00	0.01	---	---	---	---	---	---	---	---	---	---	
			E082415	540.00	545.00	0.01	---	---	---	---	---	---	---	---	---	---	
			E082416	545.00	550.00	0.01	---	---	---	---	---	---	---	---	---	---	
			E082417	550.00	555.00	0.01	---	---	---	---	---	---	---	---	---	---	
			E082418	555.00	560.00	0.02	---	---	---	---	---	---	---	---	---	---	
			E082419	560.00	565.00	0.01	---	---	---	---	---	---	---	---	---	---	
			E082420	565.00	570.00	0.16	---	---	---	---	---	---	---	---	---	---	
			E082421	570.00	575.00	0.01	---	---	---	---	---	---	---	---	---	---	570-619.5 core is lighter
			E082422	575.00	580.20	0.37	---	---	---	2.5	---	---	---	---	---	---	
			E082423	580.20	585.00	0.34	---	---	---	---	---	---	---	---	---	---	
FG	580.40	619.20															Light green/grey with local drk to light layers, str local ca strngrs, flow brx, 599.9-619.2 str local perv ank, vfg-aph, fol @ 70 tca, local fg areas. str ser alt, wk-mod
			E082424	585.00	590.00	0.01	---	---	---	---	---	---	---	---	---	---	qtz-ca vning, tr sulph
			E082425	590.00	595.00	0.27	---	---	---	---	---	---	0.5	---	---	---	local flowy text
			E082426	595.00	599.50	0.24	---	---	---	---	---	---	1.0	---	SE	W	increase in ca strgrs dh
			E082427	599.50	602.50	113.14	---	3.0	---	---	---	---	0.5	---	AK	S	ca strgrs, local sulph
			E082428	602.50	607.50	0.09	---	---	---	---	---	---	---	---	---	---	>15 dwt vg assc with ak
			E082429	607.50	610.40	0.01	---	---	---	---	---	---	---	---	AK	S	ca strgrs
			E082430	610.40	615.00	0.02	60	---	---	---	---	---	---	---	AK	S	
			E082431	615.00	619.40	0.01	---	---	---	4.5	---	---	---	---	AK	S	
UG	619.20	736.10															typical UG
			E082432	619.40	625.00	0.01	---	---	---	---	---	---	---	---	---	---	
			E082433	625.00	630.00	0.01	---	---	---	---	---	---	---	---	---	---	
			E082434	630.00	635.00	0.01	---	---	---	---	---	---	---	---	---	---	
			E082435	635.00	640.00	0.01	---	---	---	---	---	---	---	---	---	---	
			E082436	640.00	645.00	0.01	---	---	---	2.0	---	---	---	---	---	---	
			E082437	645.00	650.00	0.01	---	---	---	---	---	---	---	---	---	---	
			E082438	650.00	655.00	0.29	---	---	---	---	---	---	---	---	---	---	
			E082439	655.00	660.00	0.01	---	---	---	---	---	---	---	---	---	---	
			E082440	660.00	665.00	0.06	---	---	---	---	---	---	---	---	---	---	
			E082441	665.00	670.00	0.01	---	---	---	---	---	---	---	---	---	---	
			E082442	670.00	675.00	0.03	---	---	---	---	---	---	---	---	---	---	
			E082443	675.00	680.00	0.01	---	---	---	---	---	---	4.5	---	---	---	

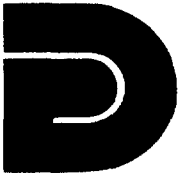
Workplace: 334011

Start Date: 10/04/1998

End Date: 10/15/1998

Geo	From	To	Sample	From	To	Assay	Fol'n	AK_V	QZ_V	QZ-AK_V	QZ-FU_V	QZ-TO_V	PY%	PO%	Alteration Type Int	Geology/Sample Comments	
			E082444	680.00	685.00	0.01	---	---	---	---	---	---	4.0	---	---	---	
			E082445	685.00	690.00	0.01	---	---	---	---	---	---	---	---	---	---	
			E082446	690.00	695.00	0.01	---	---	---	---	---	---	---	---	---	---	
			E082447	695.00	700.00	0.01	---	---	---	---	---	---	---	---	---	---	
			E082448	700.00	705.00	0.01	---	---	---	---	---	---	---	---	---	---	
			E082449	705.00	710.00	0.01	---	---	---	---	---	---	---	---	---	---	
			E082450	710.00	715.00	0.02	---	---	---	---	---	---	---	---	---	---	
			E082451	715.00	720.00	0.01	---	---	---	---	---	---	---	---	---	---	
			E082452	720.00	725.00	0.01	---	---	---	---	---	---	---	---	---	---	
			E082453	725.00	730.00	0.06	---	---	---	---	---	---	---	---	---	---	
			E082454	730.00	736.10	0.01	---	---	---	---	---	---	---	---	---	---	
FG	736.10	824.00															typical FG, 738.7-745.5 str ser alt, light yellow green, grey, str fol @ ~ 70 tca, FG fol intensity incrs dh
			E082455	736.10	738.90	0.01	---	---	---	---	---	---	---	---	---	---	
			E082456	738.90	741.60	0.01	---	---	---	1.0	---	---	---	---	AK	S	lght grn, soft, as before
			E082457	741.60	745.60	0.03	---	---	---	4.0	---	---	---	---	AK	S	
			E082458	745.60	750.00	0.01	---	---	2.0	---	---	---	---	---	---	---	
			E082459	750.00	755.00	0.01	60	---	1.0	---	---	---	---	---	---	---	blebby qv
			E082460	755.00	760.00	0.01	67	---	---	19.0	---	---	---	---	---	---	
			E082461	760.00	765.00	0.01	55	---	---	---	---	---	---	---	---	---	
			E082462	765.00	770.00	0.06	---	---	---	---	---	---	---	---	---	---	
			E082463	770.00	775.00	0.01	---	---	---	---	---	---	---	---	---	---	
			E082464	775.00	780.00	0.01	60	---	---	---	---	---	---	---	---	---	
			E082465	780.00	785.00	0.01	55	---	---	---	---	---	---	---	---	---	
			E082466	785.00	790.00	0.01	---	---	---	---	---	---	---	---	---	---	
			E082467	790.00	795.00	0.01	60	---	---	---	---	---	---	---	---	---	
			E082468	795.00	800.00	0.01	---	---	---	---	---	---	---	---	---	---	shearing increasing dh
			E082469	800.00	805.00	0.01	50	---	---	---	---	---	---	---	---	---	
			E082470	805.00	810.00	0.04	---	---	---	6.5	---	---	---	---	---	---	
			E082471	810.00	815.00	0.01	75	---	---	---	---	---	---	---	---	---	str fol
			E082472	815.00	820.00	0.01	---	---	---	---	---	---	---	---	---	---	
			E082473	820.00	824.00	0.01	65	---	11.0	---	---	---	---	---	AK	S	str fol

- EOH -



PLACER DOME NORTH AMERICA Limited

In Canada, a division of PLACER DOME (CLA) LIMITED

DOME MINE

P.O. BOX 70
SOUTH PORCUPINE, ONTARIO
CANADA
P0N 1H0

DDH: 30369

NORTHING: 6282.29
EASTING: 6676.12
ELEVATION: 1499.44

AZIMUTH: 328.29°
DIP: -5.8°

CLAIM NUMBER: P 13187, TISDALE TWP. (0 – 30' DRILLED)
P 13192, TISDALE TWP. (30.0 – 405.0' DRILLED)
P 13189, TISDALE TWP. (405.0 – 911.0' DRILLED)

CORE SIZE: AQTK

DATE STARTED: 13TH OCTOBER '98

DATE FINISHED: 19TH OCTOBER '98

DATE LOGGED: 21ST OCTOBER '98

LENGTH: 911'

LOGGED BY: P. LAUDER

DEPTH TO OVERBURDEN: Not Applicable

LOCATION: 16' EAST AND 339' SOUTH OF #4 POST, P13187, TISDALE TWP.

DRILLED BY: Major Dominik Drilling
1080 rue de L'Echo
C.P. 247
Val d'Or
Quebec, J9P 4P3

CORE STORAGE LOCATION: WHOLE CORE SAMPLED

REPRESENTATIVE OF COMPANY RESPONSIBLE FOR DRILL PROGRAM:

Placer Dome North America Ltd.
Dome Mine
Linda Gutteridge
Underground Exploration Geologist
P.O. BOX 70
South Porcupine
Ontario, P0N 1H0

Signed by Linda Gutteridge, Underground Exploration Geologist, Dome Mine

Placer Dome Canada Limited
Core Log Report
Hole Id: 30369

Workplace: 334011

Start Date: 10/13/1998

End Date: 10/19/1998

User: npy

Hole Type UG
Northing 6282.288 Easting 6676.115
Elevation 1499.442 Length 911
Comment prog # 98-56. Drift 3340

SURVEY INFORMATION

Depth	Incl.	Azimuth Cor.	Test Type by	Comment
0	-5.8	328.29	ACT gcg	
300	-2.0	327	TRO cgg	
600	-1.0	326	TRO cgg	
900	-5.0	325	TRO cgg	

2.19098

Linda G. Gage

Workplace: 334011

Start Date: 10/13/1998

End Date: 10/19/1998

Geo	From	To	Sample	From	To	Assay	Fol'n	AK_V	QZ_V	QZ-AK_V	QZ-FU_V	QZ-TO_V	PY%	PO%	Alteration Type Int	Geology/Sample Comments
			E082564	445.00	450.00	0.01	---	---	---	---	---	---	---	---	---	
			E082565	450.00	455.00	0.02	---	---	---	---	---	---	---	---	---	
			E082566	455.00	460.00	0.01	---	---	---	---	---	---	---	---	---	
			E082567	460.00	465.00	0.01	---	---	---	---	---	---	---	---	---	
			E082568	465.00	470.00	0.01	---	---	---	---	---	---	---	---	---	
			E082569	470.00	475.00	0.01	---	---	---	---	---	---	---	---	---	
			E082570	475.00	480.00	0.01	---	---	---	---	---	5.0	---	---	---	
			E082571	480.00	485.00	0.01	---	---	---	---	---	---	---	---	---	
			E082572	485.00	489.50	0.01	---	---	---	---	---	---	---	---	---	
			E082573	489.50	495.00	0.01	---	---	4.0	---	---	---	---	---	---	
			E082574	495.00	500.00	0.01	---	---	---	---	---	---	---	---	---	
			E082575	500.00	505.00	0.07	---	---	---	---	---	---	---	---	---	carb tour strgrs
			E082576	505.00	510.00	0.01	---	---	---	---	---	22.0	---	---	---	10 tour
			E082577	510.00	515.00	0.05	---	---	---	---	---	4.5	---	---	---	local irr tour blebs
			E082578	515.00	519.30	0.01	---	---	---	---	---	---	---	---	---	
FG	519.30	668.80														as above
																-1 % sulph in ank vns, mod ank alt assc with
																vning
			E082579	519.30	525.00	0.01	---	---	---	---	---	---	---	---	---	
			E082580	525.00	530.00	0.01	---	---	---	---	---	---	---	---	---	
			E082581	530.00	535.00	0.02	---	---	---	---	---	---	---	---	---	local med gr tour
			E082582	535.00	540.00	0.09	---	---	---	---	---	---	---	---	---	local med gr tour
			E082583	540.00	545.00	0.01	---	---	---	---	---	---	1.0	---	---	local med gr tour
			E082584	545.00	550.00	0.06	---	---	---	---	---	---	---	---	---	
			E082585	550.00	555.00	0.36	---	---	---	---	---	---	---	---	---	
			E082586	555.00	560.00	0.01	---	---	---	---	---	---	---	---	---	
			E082587	560.00	565.00	0.01	---	---	---	---	---	---	---	---	---	
			E082588	565.00	570.00	0.03	---	---	---	---	---	---	0.5	---	---	
			E082589	570.00	575.00	0.01	---	---	---	---	---	---	---	---	---	
			E082590	575.00	580.00	0.01	---	---	---	---	---	---	---	---	---	
			E082591	580.00	585.00	0.03	---	---	---	---	---	---	---	---	---	ca strgrs
			E082592	585.00	590.00	0.01	---	---	---	---	---	---	0.5	---	---	
			E082593	590.00	595.00	0.05	---	---	---	---	---	---	---	---	---	
			E082594	595.00	600.00	0.09	---	---	---	---	---	---	---	---	---	
			E082595	600.00	605.00	0.26	---	---	---	---	---	---	---	---	---	
			E082596	605.00	610.00	0.05	---	---	---	---	---	---	---	---	---	
			E082597	610.00	615.00	0.02	---	---	---	---	---	---	---	---	---	
			E082598	615.00	620.00	0.01	---	---	---	---	---	---	---	---	---	
			E082599	620.00	625.00	0.01	---	---	---	---	---	---	---	---	---	
			E082600	625.00	630.00	0.01	---	---	---	---	---	---	---	---	---	
			E082601	630.00	635.00	0.01	---	---	---	---	---	---	---	---	---	
			E082602	635.00	640.00	0.19	---	---	---	---	---	---	---	---	---	
			E082603	640.00	643.60	0.19	---	---	---	---	---	---	---	---	---	
			E082604	643.60	646.70	3.60	---	---	---	1.0	---	---	---	---	AK	M
			E082605	646.70	650.00	0.41	---	---	---	---	---	---	---	---	---	
			E082606	650.00	654.30	0.33	---	3.0	---	---	---	---	2.0	---	AK	S irr ank blebs
			E082607	654.30	657.00	1.53	---	29.0	---	---	---	---	2.0	---	AK	S fg diss py
			E082608	657.00	660.10	0.06	---	---	---	---	---	---	---	---	---	
			E082609	660.10	664.50	0.14	---	4.0	---	---	---	---	---	---	AK	M sph in ank

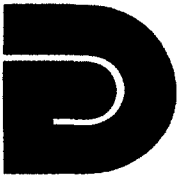
Workplace: 334011

Start Date: 10/13/1998

End Date: 10/19/1998

Geo	From	To	Sample	From	To	Assay	Fol'n	AK_V	QZ_V	QZ-AK_V	QZ-FU_V	QZ-TO_V	PY%	PO%	Alteration Type	Int	Geology/Sample Comments
			E082655	890.00	895.00	0.01	---	---	---	1.0	---	2.5	---	---	---	---	
			E082656	895.00	900.00	0.01	---	---	---	---	---	---	---	---	---	---	per hem alt
			E082657	900.00	905.00	0.01	---	---	---	---	---	---	---	---	---	---	local hem alt
			E082658	905.00	911.00	0.01	---	---	---	---	---	---	---	---	---	---	906.1-907.1 porphoritic

- EOH -



PLACER DOME NORTH AMERICA Limited

In Canada, a division of PLACER DOME (CLA) LIMITED

DOME MINE

P.O. BOX 70
SOUTH PORCUPINE, ONTARIO
CANADA
P0N 1H0

DDH: 30397

NORTHING: 5008.79
EASTING: 6389.74
ELEVATION: 2499.32

AZIMUTH: 150.66°
DIP: 8°

CLAIM NUMBER: P 13191, TISDALE TWP. (0 – 820.0' DRILLED)
P 12984, TISDALE TWP. (820.0 – 1006.0' DRILLED)

CORE SIZE: AQTk

DATE STARTED: 16TH OCTOBER '98

DATE FINISHED: 27TH OCTOBER '98

DATE LOGGED: 29TH OCTOBER '98

LOGGED BY: P. LAUDER

LENGTH: 1006'

DEPTH TO OVERBURDEN: Not Applicable

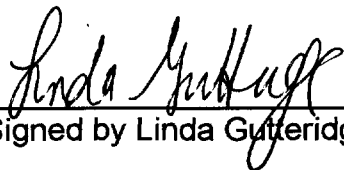
LOCATION: 259' WEST AND 339' SOUTH OF #1 POST, P13191, TISDALE TWP.

DRILLED BY: Major Dominik Drilling
1080 rue de L'Echo
C.P. 247
Val d'Or
Quebec, J9P 4P3

CORE STORAGE LOCATION: WHOLE CORE SAMPLED

REPRESENTATIVE OF COMPANY RESPONSIBLE FOR DRILL PROGRAM:

Placer Dome North America Ltd.
Dome Mine
Linda Gutteridge
Underground Exploration Geologist
P.O. BOX 70
South Porcupine
Ontario, P0N 1H0



Signed by Linda Gutteridge, Underground Exploration Geologist, Dome Mine

Placer Dome Canada Limited
Core Log Report
Hole Id: 30397

Workplace: 26526611

Start Date: 10/16/1998

End Date: 10/27/1998

User: npy

Hole Type UG
Northing 5008.794 Easting 6389.74
Elevation 2499.319 Length 1006
Comment prog # 98-57. Drift # 265266at

Linda Gutkudg

Depth	SURVEY INFORMATION			Test Type	by	Comment
	Incl.	Azimuth	Cor.			
0	8.0	150.66		ACT	gcg	
250	6.0	163		TRO	cgg	
500	5.0	167		TRO	cgg	
750	2.0	160.5		TRO	cgg	
1000	-1.0	159		TRO	cgg	

2.19098

Geo	From	To	Sample	From	To	Assay	Fol'n	AK_V	QZ_V	QZ-AK_V	QZ-FU_V	QZ-TO_V	PY%	PO%	Alteration Type	Int	Geology/Sample Comments
POR	0.00	210.80															mod grey, med-fg, mass-wkly fol @ ~30 tca, 1-3% med gr qtz eyes, local wk bleaching and stry ser alt with assc 1-2 % fg diss & irr stringer py, tr-1% perv fg diss py
			E083226	0.00	5.00	0.16	---	---	---	---	---	---	---	---	---	---	
			E083227	5.00	10.00	0.13	---	---	---	---	---	---	---	---	---	---	
			E083228	10.00	15.00	0.37	---	---	---	---	---	---	1.0	---	---	---	
			E083229	15.00	20.00	0.29	---	---	---	---	---	---	3.0	---	SI	M	sulph assc with bleached areas
			E083230	20.00	25.00	0.27	---	---	---	---	---	---	1.5	---	SE	W	
			E083231	25.00	30.00	0.21	---	---	---	---	---	---	1.0	---	SE	W	
			E083232	30.00	35.00	0.48	---	---	---	---	---	---	1.0	---	---	---	
			E083233	35.00	40.00	0.12	---	---	---	---	---	---	---	---	---	---	
			E083234	40.00	45.00	0.48	---	---	---	---	---	---	1.0	---	SE	W	1/4 in ser seam
			E083235	45.00	50.00	0.09	---	---	---	---	---	---	---	---	---	---	
			E083236	50.00	55.00	0.03	---	---	---	---	---	---	0.5	---	---	---	
			E083237	55.00	60.00	0.16	---	---	---	---	---	---	---	---	---	---	
			E083238	60.00	65.00	0.04	---	---	---	---	---	---	---	---	---	---	
			E083239	65.00	70.00	0.16	---	---	---	---	---	---	---	---	---	---	
			E083240	70.00	75.00	0.06	---	---	---	---	---	---	---	---	---	---	
			E083241	75.00	80.00	0.07	---	---	---	---	---	---	---	---	---	---	
			E083242	80.00	85.00	0.08	---	---	---	---	---	---	---	---	---	---	
			E083243	85.00	90.00	0.17	---	---	---	---	---	---	---	---	---	---	6 in bleached core
			E083244	90.00	95.00	0.13	---	---	---	---	---	---	1.0	---	---	---	py assc with siliceous area
			E083245	95.00	100.00	0.11	---	---	---	---	---	---	0.5	---	---	---	
			E083246	100.00	105.00	0.07	---	---	---	---	---	---	---	---	---	---	
			E083247	105.00	110.00	0.08	---	---	---	---	---	---	0.5	---	---	---	
			E083248	110.00	115.00	0.05	---	---	---	---	---	---	0.5	---	---	---	py assc with 5 in bleached area
			E083249	115.00	120.00	0.17	---	---	---	---	---	---	1.0	---	---	---	
			E083250	120.00	124.40	0.07	---	---	---	---	---	---	1.0	---	---	---	
			E083251	124.40	127.00	0.10	---	---	---	---	---	---	1.0	---	---	---	tr fusch in bleached area
			E083252	127.00	131.20	0.12	---	---	---	---	---	---	1.0	---	---	---	local conc of py
			E083253	131.20	133.80	0.15	---	---	3.0	---	---	---	0.5	---	SE	S	131.6-132.8 HA
			E083254	133.80	137.40	0.03	---	---	---	---	---	---	0.5	---	---	---	
			E083255	137.40	140.20	0.01	---	---	---	---	---	---	1.0	---	SE	S	HA
			E083256	140.20	145.00	0.08	---	---	1.0	---	---	---	0.5	---	---	---	
			E083257	145.00	150.00	0.01	---	---	---	---	---	---	---	---	---	---	
			E083258	150.00	155.00	0.02	---	---	---	---	---	---	---	---	---	---	
			E083259	155.00	161.50	0.04	---	---	---	---	---	---	---	---	---	---	
			E083260	161.50	165.00	0.01	---	---	---	---	---	---	1.0	---	SE	M	
			E083261	165.00	170.00	0.02	---	---	---	---	---	---	1.0	---	---	---	
			E083262	170.00	175.00	0.04	---	---	---	---	---	---	1.0	---	---	---	
			E083263	175.00	180.00	0.06	---	---	---	---	---	---	1.0	---	---	---	local conc of py
			E083264	180.00	185.00	0.02	---	---	---	---	---	---	---	---	---	---	
			E083265	185.00	188.60	0.02	---	---	---	---	---	---	---	---	---	---	
			E083266	188.60	191.20	0.13	---	---	---	---	---	---	---	---	SE	S	188.8-193.7 HA
			E083267	191.20	193.90	0.04	---	---	---	---	---	---	0.5	---	SE	S	
			E083268	193.90	196.80	0.12	---	---	2.0	---	---	---	---	---	SE	M	2 in se seam
			E083269	196.80	201.00	0.07	---	---	---	---	---	---	0.5	---	SE	W	
			E083270	201.00	205.00	0.09	---	---	---	---	---	---	0.5	---	---	---	

Workplace: 26526611

Start Date: 10/16/1998

End Date: 10/27/1998

Geo	From	To	Sample	From	To	Assay	Fol'n	AK_V	QZ_V	QZ-AK_V	QZ-FU_V	QZ-TO_V	PY%	PO%	Alteration Type	Int	Geology/Sample Comments
POR	210.80	348.90	E083271	205.00	210.80	0.10	---	---	---	---	---	---	---	---	---	---	light grey/dirty white, med grained, mass-wkly fol @ 25-45 deg tca, 5-10% med gr qtz eyes, locally greyer, wk ser alt, tr-1 % py
			E083272	210.80	215.00	0.07	---	---	---	---	---	---	1.0	---	---	---	
			E083273	215.00	220.00	0.05	---	---	---	---	---	---	1.0	---	---	---	
			E083274	220.00	225.00	0.04	---	---	---	---	---	---	1.0	---	---	---	
			E083275	225.00	230.00	0.52	---	---	---	---	---	---	---	---	---	---	
			E083276	230.00	235.00	0.09	---	---	---	---	---	---	1.0	---	---	---	
			E083277	235.00	240.00	0.10	---	---	---	---	---	---	---	---	---	---	
			E083278	240.00	245.00	0.08	---	---	---	---	---	---	---	---	---	---	
			E083279	245.00	250.00	0.10	---	---	---	---	---	---	---	---	---	---	
			E083280	250.00	255.00	0.04	---	---	---	---	---	---	1.0	---	---	---	
			E083281	255.00	260.00	0.08	---	---	---	---	---	---	1.0	---	---	---	
			E083282	260.00	265.00	0.06	---	---	---	---	---	---	1.0	---	---	---	
			E083283	265.00	270.00	0.05	---	---	---	---	---	---	---	---	---	---	
			E083284	270.00	275.00	0.17	---	---	---	---	---	---	---	---	---	---	
			E083285	275.00	280.00	0.13	---	---	---	---	---	---	---	---	---	---	
			E083286	280.00	285.00	0.14	---	---	---	---	---	---	---	---	---	---	
			E083287	285.00	290.00	0.24	---	---	1.0	---	---	---	---	---	---	---	
			E083288	290.00	295.00	0.14	---	---	---	---	---	---	1.0	---	---	---	
			E083289	295.00	300.00	0.12	---	---	---	---	---	1.0	0.5	---	---	---	
			E083290	300.00	305.00	0.07	---	---	---	---	---	---	---	---	---	---	
			E083291	305.00	310.00	0.05	---	---	---	---	---	---	0.5	---	---	---	
			E083292	310.00	315.00	0.47	---	---	---	---	---	---	---	---	---	---	
			E083293	315.00	320.00	0.40	---	---	---	---	---	---	0.5	---	---	---	
			E083294	320.00	325.00	0.34	---	---	---	---	---	---	---	---	---	---	
			E083295	325.00	330.00	0.14	---	---	---	---	---	---	---	---	---	---	
			E083296	330.00	335.00	0.12	---	---	1.0	---	---	---	---	---	---	---	
			E083297	335.00	340.20	0.09	---	---	---	---	---	---	---	---	---	---	
			E083298	340.20	345.00	0.10	---	---	4.0	---	---	---	1.5	---	---	---	340.2-345 FG
			E083299	345.00	348.90	0.15	---	---	---	---	---	---	0.5	---	---	---	
FG	348.90	472.40															dark green, fg, mod strg ca strgrs define mod-strg fol @ 50-70 deg tca, tr-1% fg diss py, local irr py strgrs
			E083300	348.90	355.00	0.39	---	---	---	---	---	---	---	---	---	---	
			E083301	355.00	360.00	0.50	---	---	2.0	---	---	---	1.5	---	SI	S	1/2 in py strgr w qv
			E083302	360.00	364.70	0.16	---	---	---	---	---	---	1.0	---	---	---	
			E083303	364.70	367.40	0.13	---	---	---	---	---	---	2.0	---	---	---	364.7-366.8 POR
			E083304	367.40	371.00	0.23	---	---	---	---	---	---	---	---	---	---	
			E083305	371.00	373.50	0.17	---	---	6.0	---	---	---	3.0	---	---	---	sulph in qv
			E083306	373.50	380.00	0.17	---	---	---	---	---	---	1.0	---	---	---	
			E083307	380.00	385.00	0.15	---	---	---	---	---	---	1.0	---	---	---	
			E083308	385.00	390.00	0.78	---	---	---	---	---	---	1.0	---	---	---	
			E083309	390.00	395.00	0.26	---	---	---	---	---	---	1.0	---	---	---	
			E083310	395.00	400.00	0.27	---	---	---	---	---	---	0.5	---	---	---	
			E083311	400.00	405.00	0.12	---	---	---	---	---	---	---	---	---	---	
			E083312	405.00	410.00	0.05	---	---	---	---	---	---	---	---	---	---	
			E083313	410.00	415.00	0.23	---	---	---	---	---	---	1.0	---	---	---	py strgr @ 60 tca

Geo	From	To	Sample	From	To	Assay	Fol'n	AK_V	QZ_V	QZ-AK_V	QZ-FU_V	QZ-TO_V	PY%	PO%	Alteration Type	Geology/Sample Int	Comments
			E083314	415.00	420.00	0.28	---	---	---	---	---	---	1.0	---	---	---	
			E083315	420.00	425.00	0.07	---	---	---	---	---	---	1.0	---	---	---	
			E083316	425.00	430.00	0.06	---	---	---	---	---	---	0.5	---	---	---	
			E083317	430.00	435.00	0.05	---	---	---	---	---	---	---	---	---	---	
			E083318	435.00	440.00	0.02	---	---	---	---	---	---	---	---	---	---	
			E083319	440.00	445.00	0.02	---	---	---	---	---	---	---	---	---	---	
			E083320	445.00	450.00	0.06	---	---	---	---	---	---	---	---	---	---	
			E083321	450.00	455.00	0.05	---	---	---	---	---	---	---	---	---	---	
			E083322	455.00	460.00	0.02	---	---	---	---	---	---	---	---	---	---	
			E083323	460.00	465.00	0.07	---	---	---	---	---	---	0.5	---	---	---	
POR	472.40	519.30	E083324	465.00	472.40	0.25	---	---	2.0	---	---	---	1.0	---	---	---	py in qv-ca same as 210.8-348.9
			E083325	472.40	475.00	0.02	---	---	---	---	---	---	---	---	---	---	
			E083326	475.00	480.00	0.02	---	---	---	---	---	---	---	---	---	---	
			E083327	480.00	485.00	0.03	---	---	---	---	---	---	---	---	---	---	
			E083328	485.00	490.00	0.02	---	---	---	---	---	---	---	---	---	---	
			E083329	490.00	495.00	0.01	---	---	---	---	---	---	---	---	---	---	
			E083330	495.00	500.00	0.01	---	---	---	---	---	---	---	---	---	---	
			E083331	500.00	505.00	0.01	---	---	---	---	---	---	---	---	---	---	
			E083332	505.00	510.00	0.01	---	---	---	---	---	---	---	---	---	---	
			E083333	510.00	515.00	0.01	---	---	---	---	---	---	---	---	---	---	
FG	519.30	579.90	E083334	515.00	519.30	0.02	---	---	13.0	---	---	---	---	---	---	---	same as interval 348.9-472.4
			E083335	519.30	525.00	0.16	---	---	---	---	---	---	1.0	---	---	---	
			E083336	525.00	530.00	0.03	---	---	---	---	---	---	---	---	---	---	
			E083337	530.00	535.00	0.03	---	---	---	---	---	---	1.0	---	---	---	
			E083338	535.00	540.00	0.02	---	---	---	---	---	---	1.0	---	---	---	
			E083339	540.00	545.00	0.01	---	---	---	---	---	---	---	---	---	---	
			E083340	545.00	550.00	0.09	---	---	---	---	---	---	---	---	---	---	
			E083341	550.00	555.00	0.03	---	---	---	---	---	---	1.0	---	---	---	
			E083342	555.00	560.00	0.01	---	---	---	---	---	---	0.5	---	---	---	
			E083343	560.00	565.00	0.01	---	---	---	---	---	---	---	---	---	---	
			E083344	565.00	570.00	0.01	---	---	---	---	---	---	1.0	---	---	---	
			E083345	570.00	575.00	0.18	---	---	---	---	---	---	---	---	---	---	
UG	579.90	727.80	E083346	575.00	579.90	0.05	---	---	---	---	---	---	1.0	---	---	---	dark green, fg, mass, wk chl, tr-1% fg diss py.
			E083347	579.90	585.00	0.01	---	---	---	---	---	---	---	---	---	---	
			E083348	585.00	590.00	0.02	---	---	---	---	---	---	---	---	---	---	
			E083349	590.00	595.00	0.01	---	---	---	---	---	---	1.0	---	---	---	
			E083350	595.00	600.00	0.03	---	---	---	---	---	---	1.0	---	---	---	
			E083351	600.00	605.00	0.01	---	---	---	---	---	---	---	---	---	---	locally flowy
			E083352	605.00	610.00	0.02	---	---	---	---	---	---	---	---	---	---	locally flowy
			E083353	610.00	615.00	0.03	---	---	---	---	---	---	0.5	---	---	---	.2 in py strgr @ 55 tca
			E083354	615.00	620.00	0.02	---	---	---	---	---	---	---	---	---	---	
			E083355	620.00	625.00	0.01	---	---	---	---	---	---	1.0	---	---	---	.2 in py strgr @ 70 tca
			E083356	625.00	630.00	0.03	---	---	---	---	---	---	1.5	---	---	---	increasing py strgrs
			E083357	630.00	635.00	0.21	---	---	---	---	---	---	0.5	---	---	---	py strgrs
			E083358	635.00	640.00	0.03	---	---	---	---	---	---	1.0	---	---	---	irr py strgrs
			E083359	640.00	645.80	0.03	---	---	---	---	---	---	1.0	---	---	---	

Workplace: 26526611

Start Date: 10/16/1998

End Date: 10/27/1998

Geo	From	To	Sample	From	To	Assay	Fol'n	AK_V	QZ_V	QZ-AK_V	QZ-FU_V	QZ-TO_V	PY%	PO%	Alteration Type	Int	Geology/Sample Comments
			E083404	845.00	850.00	0.44	---	---	---	---	---	---	0.5	---	---	---	
			E083405	850.00	855.00	0.08	---	---	---	---	---	---	1.0	---	---	---	
			E083406	855.00	860.00	0.03	---	---	---	---	---	---	---	---	---	---	
			E083407	860.00	865.00	1.45	---	---	---	---	---	---	1.0	---	---	---	
			E083408	865.00	870.00	0.13	---	---	---	---	---	---	---	---	---	---	
			E083409	870.00	875.00	0.21	---	---	---	---	---	---	1.0	---	---	---	
			E083410	875.00	880.00	0.06	---	---	---	---	---	---	---	---	---	---	
			E083411	880.00	885.00	0.10	---	---	---	---	---	---	---	---	---	---	
			E083412	885.00	890.00	0.04	---	---	1.0	---	---	---	0.5	---	---	---	
			E083413	890.00	895.00	0.02	---	---	---	---	---	---	1.0	---	---	---	
			E083414	895.00	900.00	0.27	---	---	1.0	---	---	---	0.5	---	---	---	
			E083415	900.00	905.00	0.04	---	---	---	---	---	---	1.0	---	---	---	
			E083416	905.00	910.00	0.02	---	---	---	---	---	---	---	---	---	---	
			E083417	910.00	915.00	0.02	---	---	---	---	---	---	---	---	---	---	
			E083418	915.00	920.00	0.03	---	---	---	---	---	---	---	---	---	---	
			E083419	920.00	924.40	0.03	---	---	---	---	---	---	---	---	---	---	
UG	924.40	951.90															same as 579.9-727.8
			E083420	924.40	930.00	0.01	---	---	---	---	---	10.0	---	---	---	---	
			E083421	930.00	935.00	0.01	---	---	---	---	---	---	---	---	---	---	
			E083422	935.00	940.00	0.02	---	---	---	---	---	---	---	---	---	---	
			E083423	940.00	945.00	0.01	---	---	---	---	---	---	---	---	---	---	
			E083424	945.00	951.90	0.15	---	---	---	---	---	---	0.5	---	---	---	
FG	951.90	1002.50															same as 348.9-472.4 less ca py assc with qv
			E083425	951.90	955.00	0.03	---	---	---	---	---	4.0	1.0	---	---	---	
			E083426	955.00	960.00	0.01	---	---	---	---	---	---	---	---	---	---	
			E083427	960.00	965.00	0.01	---	---	1.0	---	---	---	0.5	---	---	---	
			E083428	965.00	970.00	0.42	---	---	---	---	---	---	---	0.1	---	---	
			E083429	970.00	972.50	0.17	---	---	---	---	---	---	0.5	1.5	---	---	irr sulph strgrs
			E083430	972.50	977.50	0.31	---	---	---	---	---	---	---	---	---	---	
			E083431	977.50	980.70	1.01	---	---	---	---	---	---	1.0	1.0	---	---	irr sulph strgrs
			E083432	980.70	985.00	0.12	---	---	---	---	---	---	---	1.0	---	---	
			E083433	985.00	990.00	0.94	---	---	---	---	---	---	---	---	---	---	cp strgly assc with ca
			E083434	990.00	995.00	0.07	---	---	---	---	---	---	0.5	0.5	---	---	sulph assc with ca
			E083435	995.00	1000.00	0.30	---	---	---	---	---	---	1.5	---	---	---	irr py strgr & crs gr py
			E083436	1000.00	1002.50	0.06	---	---	---	---	---	---	---	---	---	---	
POR	1002.50	1006.00															sames as 0-210.8
			E083437	1002.50	1006.00	0.09	---	---	---	---	---	---	---	---	---	---	

- EOH -



Ministry of
Northern Development
and Mines

Declaration of Assessment Work Performed on Mining Land

Mining Act, Subsection 65(2) and 66(3), R.S.O. 1990

Transaction Number (office use) <i>W9960.00029</i>
Assessment Files Research Imaging



42A06NE2011 2.19098 TISDALE

900

subsection 65(2) and 66(3) of the Mining Act. Under section 8 of the Mining Act, assessment work and correspond with the mining land holder. Questions about this form should be directed to the Ministry of Northern Development and Mines, 3rd Floor, 933 Ramsey Lake Road, Sudbury, Ontario, N2T 8P8.

2.19098

1. Recorded holder(s) (Attach a list if necessary)

Name Placer Dome (CLA) Limited	Client Number 300210
Address 130 Adelaide Street West; P.O.BOX 43; Suite 3201; Toronto; Ontario; M5H 3P5	Telephone Number (905) 770 2005
	Fax Number (905) 770 2006
Name	Client Number
Address	Telephone Number
	Fax Number

2. Type of work performed: Check (✓) and report on only ONE of the following groups for this declaration.

Geotechnical: prospecting, surveys, assays and work under section 18 (regs) **Physical: underground exploration diamond drilling and associated assays** Rehabilitation

Work Type Diamond drilling	Office Use
	Commodity
	Total \$ Value of Work Claimed \$57,842
Dates Work Performed From 16 Day 07 Month 1998 Year To 29 Day 10 Month 1998 Year	NTS Reference
Global Positioning System Data (if available)	Mining Division <i>Porcupine</i>
Township/Area Tisdale	Resident Geologist District <i>Timmins</i>
M or G-Plan Number G	

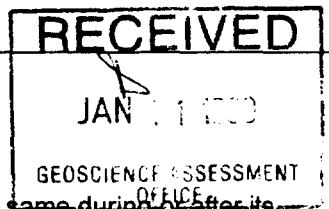
- Please remember to:
- obtain a work permit from the Ministry of Natural Resources as required;
 - provide proper notice to surface rights holders before starting work;
 - complete and attach a Statement of Costs, form 0212;
 - provide a map showing contiguous mining lands that are linked for assigning work;
 - include two copies of your technical report.

3. Person or companies who prepared the technical report (Attach a list if necessary)

Name Linda Gutteridge	Telephone Number (705) 235 3221 ext 2011
Address P.O.BOX 70 ; South Porcupine; Ontario; P0N 1H0	Fax Number (705) 235 2343
Name	Telephone Number
Address	Fax Number

4. Certification by Recorded Holder or Agent

I, M. Luba Vcislo, do hereby certify that I have personal knowledge of the facts set forth in this Declaration of Assessment Work having caused the work to be performed or witnessed the completion and, to the best of my knowledge, the annexed report is true.



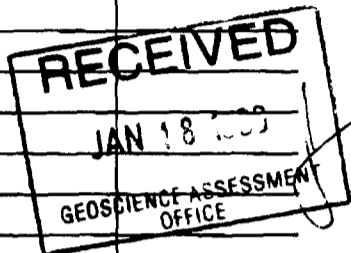
Signature of Recorded Holder or Agent <i>M. Luba Vcislo</i>	Date December 11, 1998
Agent's Address 130 Adelaide Street W; P.O.BOX 43; Suite 3201; Toronto; Ontario; M5H 3P5	Telephone Number (905) 770 2005
	Fax Number (905) 770 2006

to be recorded and distributed. Work can only be assigned to claims that are contiguous (adjoining) to the mining work was performed, at the time work was performed. A map showing the contiguous link must accompany this form.

5. Work done on land where

6) 9960.00029 * Amended *

Claim Number. Or if work was done on other eligible mining land, show in this column the location number indicated on the claim map.	Number of Claim Units. For other mining land, list hectares.	Value of work performed on this claim or other mining land.	Value of work applied to this claim.	Value of work assigned to other mining claims.	Bank Value of work To be distributed at a future date
1 N1/2 Lot2:Con2	84.95Ha	\$21,384	0	\$8,472	\$12,912
2 P 12984	15.98Ha	\$2,482	0	\$2,482	
3 P 13189	16.08Ha	\$12,026	0	\$12,026	
4 P 13191	15.98Ha	\$10,619	0	\$10,619	
5 P 13182	16.08Ha	\$9,610	0	\$9,610	
6 P 13197	16.08Ha	\$790	0	\$790	
7 P 13166	16.24Ha	\$921	0	\$921	
Cont: See SCHEDULE "A" attached					
Column Totals	7	\$57,842	0	\$44,930	\$12,912



I, M. Luba Vcislo, do hereby certify that the above work credits are eligible under subsection 7 (1) of the Assessment Work Regulation 6/96 for assignment to contiguous claims or for application to the claim where the work was done.

Signature of Recorded Holder or Agent Authorized in Writing: *[Signature]* Date: December 15, 1998

6. Instruction for cutting back credits that are not approved.

Some of the credits claimed in this declaration may be cut back. Please check (✓) in the boxes below to show how you wish to prioritize the deletion of credits:

- 1. Credits are to be cut back from the Bank first, followed by option 2 or 3 or 4 as indicated.
- 2. Credits are to be cut back starting with the claims listed last, working backwards; or
- 3. Credits are to be cut back equally over all claims listed in this declaration; or
- 4. Credits are to be cut back as prioritized on the attached appendix or as follows (describe):

Note: If you have not indicated how your credits are to be deleted, credits will be cut back from the Bank first, followed by option number 2 if necessary.

For Office Use Only

Received Stamp	Deemed Approved Date	Date Notification Sent
	Date Approved	Total Value of Credit Approved
Approved for Recording by Mining Recorder (Signature)		

02-11 (08/87)

JAN 18 '99 10:21

9057702006

PAGE 01

- CLAIM NUMBER
- P 1189913
- P 1193358
- P 1193359
- P 1201138
- P 1201195
- P 1206931
- P 1212619
- P 1213181
- P 1213231
- P 1213232
- P 1213233
- P 1213234
- P 1213573
- P 1226410



Statement of Costs for Assessment Credit

Transaction Number (office use)

W9960.02029

Personal information collected on this form is obtained under the authority of subsection 6 (1) of the Assessment Work Regulation 6/96. Under section 8 of the Mining Act, this information is a public record. This information will be used to review the assessment work and correspond with the mining land holder. Questions about this collection should be directed to a Provincial Mining Recorder, Ministry of Northern Development and Mines, 3rd Floor, 933 Ramsey Lake Road, Sudbury, Ontario, P3E 6B5.

2.19098

Table with 4 columns: Work Type, Units of work, Cost Per Unit of work, Total Cost. Rows include Underground Exploration Diamond Drilling, Sampling & Assay cost, Core logging: report writing, Associated Costs (e.g. supplies, mobilization and demobilization), Transportation Costs, Food and Lodging Costs, and Total Value of Assessment Work (\$57,842.00).

Calculations of Filing Discounts:

- 1. Work filed within two years of performance is claimed at 100% of the above Total Value of Assessment Work.
2. If work is filed after two years and up to five years after performance, it can only be claimed at 50% of the Total Value of Assessment Work. If this situation applies to your claims, use the calculation below:

TOTAL VALUE OF ASSESSMENT WORK x 0.50 = Total \$ value of worked claimed.

Note:

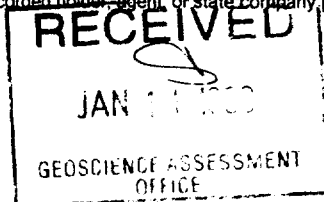
- Work older than 5 years is not eligible for credit.
- A recorded holder may be required to verify expenditures claimed in this statement of costs within 45 days of a request for verification and/or correction/clarification. If verification and/or correction/clarification is not made, the Minister may reject all or part of the assessment work submitted.

Certification verifying costs:

I, M. Luba Vcislo, do hereby certify, that the amounts shown are as accurate as may reasonably be determined and the costs were incurred while conducting assessment work on the lands indicated on the accompanying

Declaration of Work form as Land Manager I am authorized to make this certification.

(recorded holder, agent, or state company position with signing authority)



Signature: [Handwritten Signature] Date: Dec. 11/1998

Geoscience Assessment Office
933 Ramsey Lake Road
6th Floor
Sudbury, Ontario
P3E 6B5

Telephone: (888) 415-9846
Fax: (877) 670-1555

June 4, 1999

M. Luba Vcislo
PLACER DOME (CLA) LIMITED
130 ADELAIDE STREET WEST
P.O. BOX 43, SUITE 3201
TORONTO, ON
M5H-3P5

Visit our website at:
www.gov.on.ca/MNDM/MINES/LANDS/mlsmnpge.htm

Dear Sir or Madam:

Submission Number: 2.19098

Status

Subject: Transaction Number(s): W9960.00029 Approval After Notice

We have reviewed your Assessment Work submission with the above noted Transaction Number(s). The attached summary page(s) indicate the results of the review. **WE RECOMMEND YOU READ THIS SUMMARY FOR THE DETAILS PERTAINING TO YOUR ASSESSMENT WORK.**

If the status for a transaction is a 45 Day Notice, the summary will outline the reasons for the notice, and any steps you can take to remedy deficiencies. The 90-day deemed approval provision, subsection 6(7) of the Assessment Work Regulation, will no longer be in effect for assessment work which has received a 45 Day Notice. Allowable changes to your credit distribution can be made by contacting the Geoscience Assessment Office within this 45 Day period, otherwise assessment credit will be cut back and distributed as outlined in Section #6 of the Declaration of Assessment work form.

Please note any revisions must be submitted in **DUPLICATE** to the Geoscience Assessment Office, by the response date on the summary.

If you have any questions regarding this correspondence, please contact Bruce Gates by e-mail at bruce.gates@ndm.gov.on.ca or by telephone at (705) 670-5856.

Yours sincerely,



ORIGINAL SIGNED BY
Blair Kite
Supervisor, Geoscience Assessment Office
Mining Lands Section

Work Report Assessment Results

Submission Number: 2.19098

Date Correspondence Sent: June 04, 1999

Assessor: Bruce Gates

Transaction Number	First Claim Number	Township(s) / Area(s)	Status	Approval Date
W9960.00029	G.6000281	TISDALE	Approval After Notice	May 21, 1999

Section:
16 Drilling PDRILL

The revisions outlined in the Notice dated April 6, 1999, have been corrected. Accordingly, assessment work credit has been approved as outlined on the AMENDED Declaration of Assessment Work Form accompanying this submission.

Correspondence to:

Resident Geologist
South Porcupine, ON

Recorded Holder(s) and/or Agent(s):

M. Luba Vcislo
PLACER DOME (CLA) LIMITED
TORONTO, ON

Assessment Files Library
Sudbury, ON

MURPHY TWP.

MAP SYMBOLOLOGY

Aerial Cableway	Pipeline
Boundary	Railroad
International	3-Mile Track
Dist. Township	3-Mile Track
Indian Res. Bdy	Approximate
Approximate	Road
Lot, Concession	Highway County
Approximate	Township
Part Boundary	Access Road of doubtful
Bridge	significance (driveway)
Road, Railroad	Trail, Bush Road
Building	(portage alley)
Chimney	Rapids
Cliff, Pit, Pile	Double line river
Contours	with multiple rapids
Interpretation	Double line river
Approximate	with multiple rapids
Depression	Reservoir
Control Points	River, Stream, Canal
Horizontal	Approximate
Vertical	direction of flow
Culvert	Rock
Falls	Spot Elevation
Double line river	(true elevation) 300.0
Fence, Hedge, Wall	Tower
Feature Outline	Transmission Line
(Construction features, etc.)	Pole
Flooded Land	Pyrene
Lock	Tunnel
Marsh or Swamp	Utility Poles
Mast	Wharf, Dock, Pier
Mine Head Frame	Wooded Area
Outcrop	

AREAS WITHDRAWN FROM DISPOSITION

- M.R.O. - MINING RIGHTS ONLY
- S.R.O. - SURFACE RIGHTS ONLY
- M.+S. - MINING AND SURFACE RIGHTS

Description	Order No.	Date	Disposition	File
(R2) - THE SURFACE AND MINING RIGHTS ARE WITHDRAWN FROM PROSPECTING, STAKE OUT, SALE OR LEASE UNDER SECTION 35 OF THE MINING ACT R.S.O. 1990 DATED 22-MAY-97 AT 13:23 EAST. ORDER NO. W-P-23/96 NER.				

(R1) MINING RIGHTS ONLY WITHDRAWN FROM PROSPECTING, STAKE OUT, SALE OR LEASE UNDER SECTION 35 OF THE MINING ACT R.S.O. 1990 DATED 22-MAY-97 AT 13:23 EAST. ORDER NO. W-P-26/92 NER.

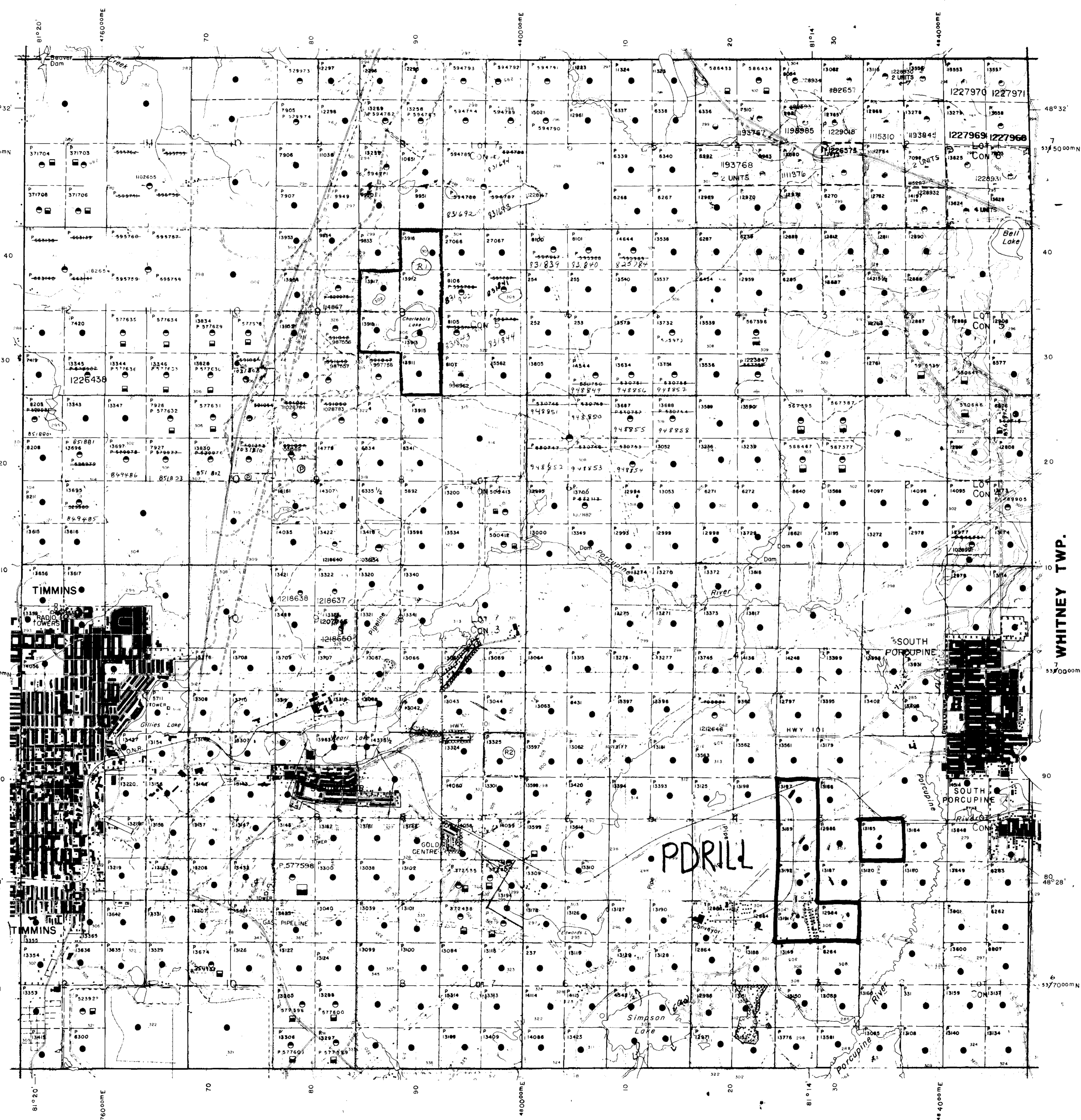
W-P-26/92 NER P.A. 1000 1:4.4 10000



THE INFORMATION THAT APPEARS ON THIS MAP HAS BEEN COMPILED FROM VARIOUS SOURCES AND ACCURACY IS NOT GUARANTEED. THOSE WISHING TO STAKE MINING CLAIMS SHOULD CONSULT WITH THE MINING RECORDER, MINISTRY OF NORTHERN DEVELOPMENT AND MINES, FOR ADDITIONAL INFORMATION ON THE STATUS OF THE LANDS SHOWN HEREON.

MOUNTJOY TWP.

537000mN



DELORO TWP.

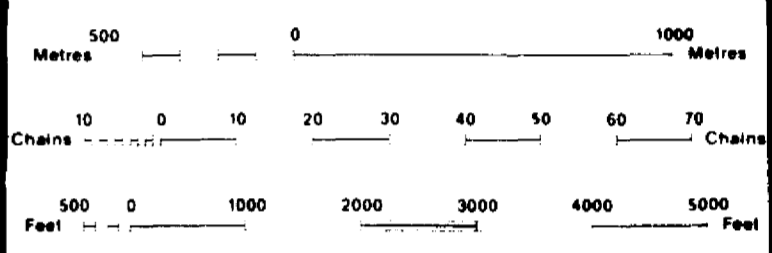
LEGEND

HIGHWAY AND ROUTE No.	
OTHER ROADS	
TRAILS	
SURVEYED LINES	
TOWNSHIPS, BASE LINES, ETC.	
LOTS, MINING CLAIMS PARCELS ETC.	
UNSURVEYED LINES	
LOT LINES	
PARCEL BOUNDARY	
MINING CLAIMS ETC.	
RAILWAY AND RIGHT OF WAY	
UTILITY LINES	
NON PERENNIAL STREAM	
FLOODING OR FLOODING RIGHTS	
SUBDIVISION OR COMPOSITE PLAN	
RESERVATIONS	
ORIGINAL SHORELINE	
MARSH OR MUSKIEG	
MINES	
TRAVERSE MONUMENT	

DISPOSITION OF CROWN LANDS

TYPE OF DOCUMENT	SYMBOL
PATENT, SURFACE & MINING RIGHTS	●
... SURFACE RIGHTS ONLY	○
... MINING RIGHTS ONLY	◐
LEASE, SURFACE & MINING RIGHTS	◑
... SURFACE RIGHTS ONLY	◒
... MINING RIGHTS ONLY	◓
LICENCE OF OCCUPATION	◔
ORDER-IN-COUNCIL	OC
RESERVATION	⊙
CANCELLED	⊘
SAND & GRAVEL	⊙

NOTE: MINING RIGHTS IN PARCELS PATENTED PRIOR TO MAY 6 1913, VESTED IN ORIGINAL PATENTEE BY THE PUBLIC LANDS ACT R.S.O. 1970, CHAP. 380, SEC. 63, SUBSEC. 1



SCALE 1:20 000
GRID ZONE 17

NOTES

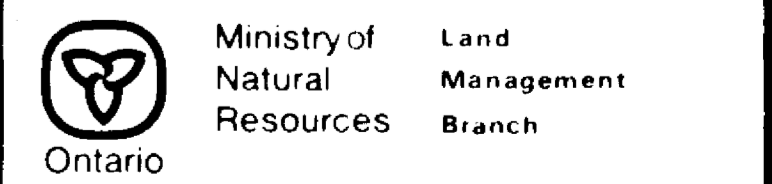
REGISTERED PLAN OF SUBDIVISION
12

THE INFORMATION THAT APPEARS ON THIS MAP HAS BEEN COMPILED FROM VARIOUS SOURCES, AND ACCURACY IS NOT GUARANTEED.

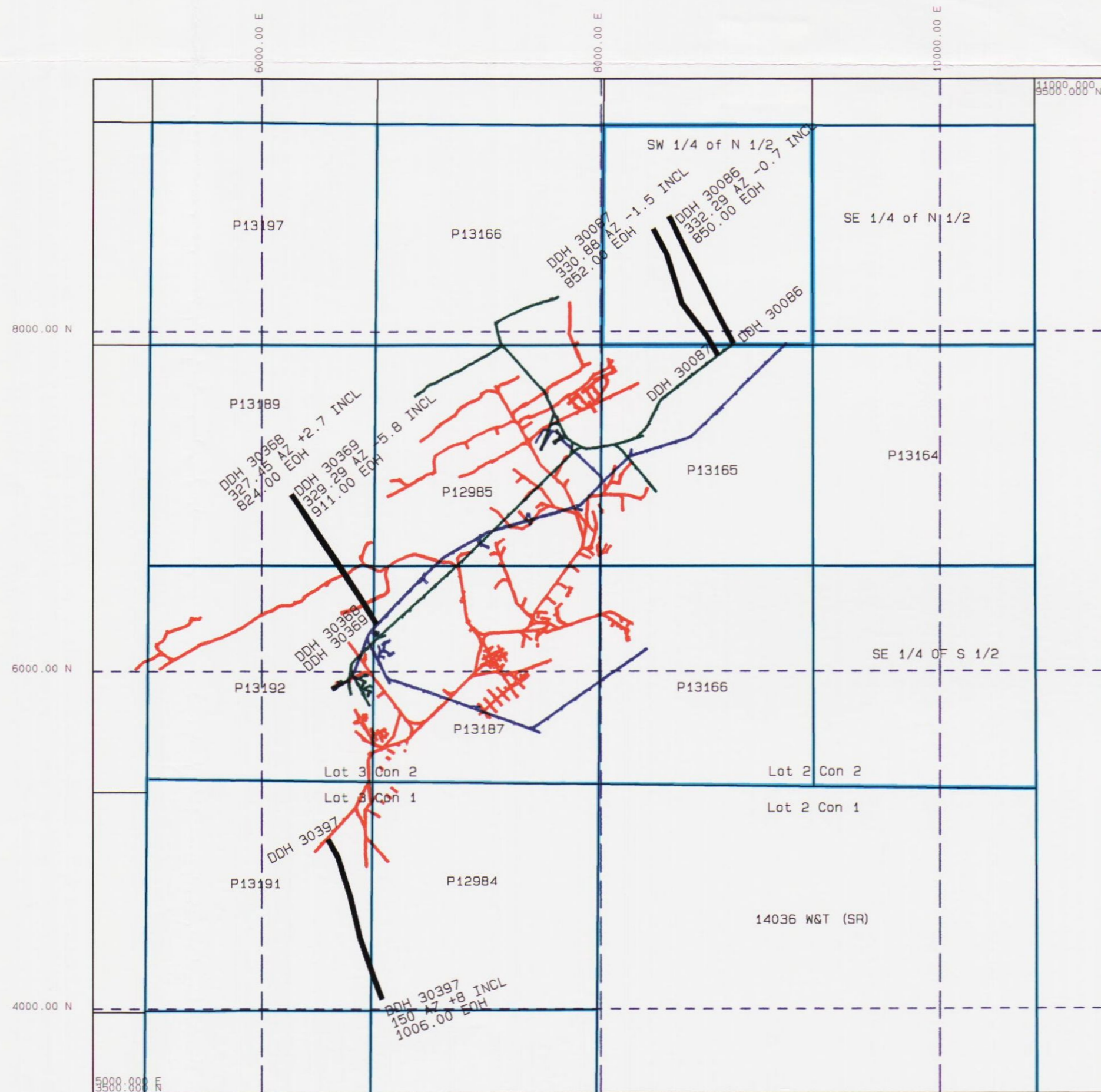
JUN 07 1999

THOSE WISHING TO STAKE MINING CLAIMS SHOULD CONSULT WITH THE MINING RECORDER, MINISTRY OF NORTHERN DEVELOPMENT AND MINES, FOR ADDITIONAL INFORMATION ON THE STATUS OF THE LANDS SHOWN HEREON.

TOWNSHIP
TISDALE
M.N.R. ADMINISTRATIVE DISTRICT
TIMMINS
MINING DIVISION
PORCUPINE
LAND TITLES / REGISTRY DIVISION
COCHRANE



ORIGINAL COMPILATION JULY 1984
REVISED
G-3976



LEGEND	
Trace Annotation	
	Default trace color
	Start-of-hole annotation color
	End-of-hole annotation color
Triangulations	
	26 LEVEL U/G WORKINGS
	33 LEVEL U/G WORKINGS
Digitised drafting	
	CLAIM BOUNDARY
Grid lines	
	MINE GRID

Horizontal Scale

 1 inch is approx. 666.67 ft

2.19098

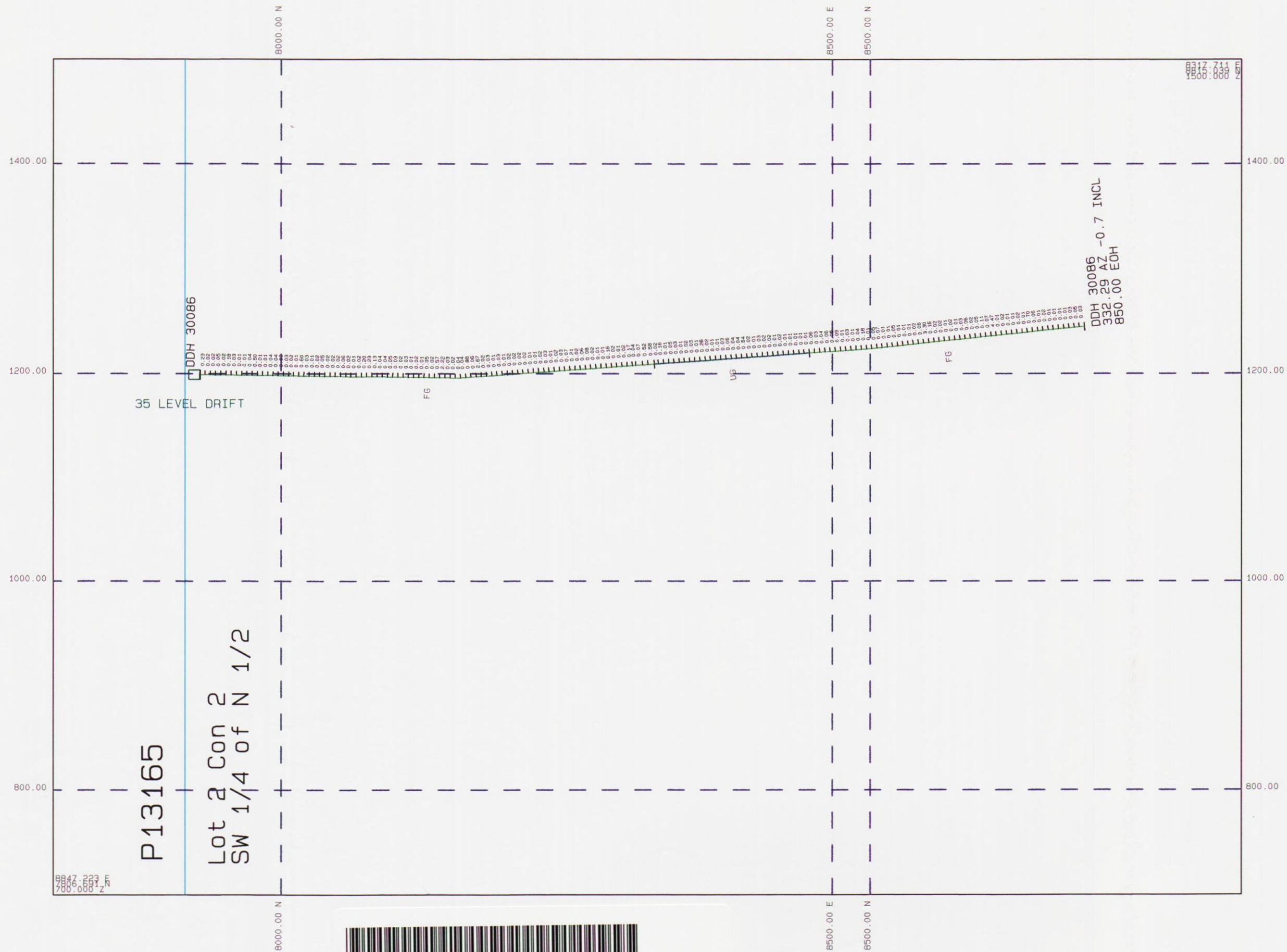


42A06NE2011 2.19098 TISDALE 210

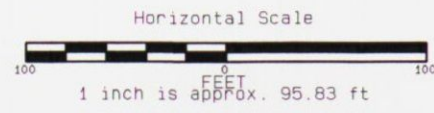
Placer Dome (CLA) Limited

Dome Mine
 DDH Location Plan
 Tisdale Township

Scale: 1:8000
Date: 17-May-99
Project: UG
Drawn By: PNL
Checked:
Approved:
Drawing No.



LEGEND	
Left Side Trace Annotation	
—	ROCK
Non-logged intervals displayed	
Right Side Trace Annotation	
—	AU_DWT AU Assays in DWT (1 oz = 20 dwt)
Non-logged intervals displayed	
Trace Annotation	
█	THO
█	PK
█	CR
█	GRA
█	SLT
█	CAS
█	LC
█	576
█	CON
█	QW
█	YAL
█	SLA
█	UG
Non-logged intervals displayed	
Start-of-hole annotation color	
End-of-hole annotation color	
Triangulations	
—	35 LEVEL DRIFT
—	CLAIM BOUNDARY
Digitised drafting	
—	File: USCLAIMS1.DWG
—	Layer: CLAMS
—	Object: *
Grid lines	
—	MINE GRID



2.19098

Placer Dome (CLA) Limited	
DDH 30086 Section	Scale: 1:1150
152 Degree Azimuth	Date: 17-May-99
Section Looking SW	Project: UG
	Drawn By: PNL
	Checked:
	Approved:
	Drawing No.

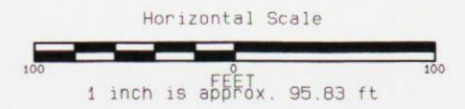
8842.237 E
788.008 Z



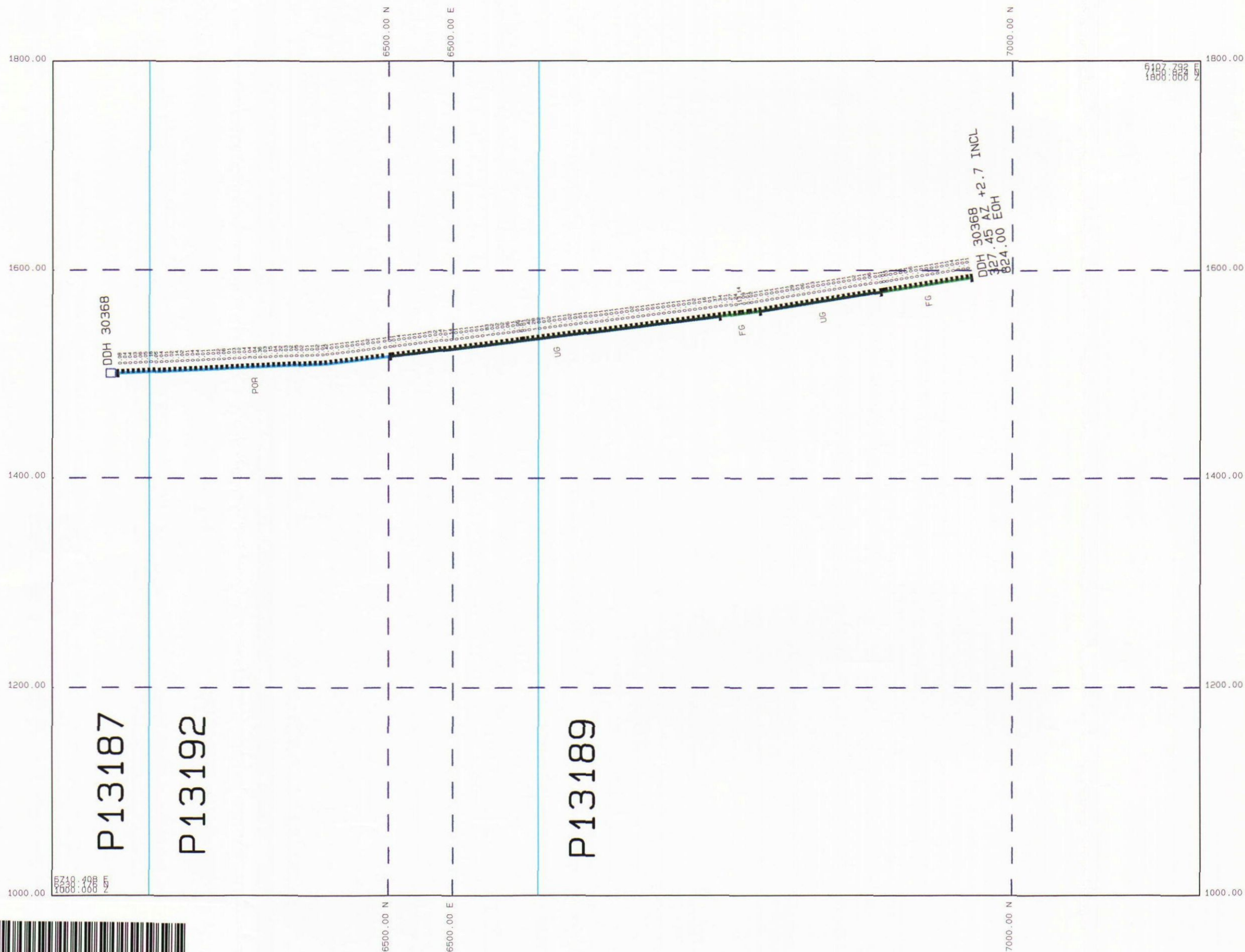
LEGEND	
Left Side Trace Annotation	ROCK
Non-logged intervals displayed	
Right Side Trace Annotation	AU_DWT Au assays in DWT (1 oz = 20 dwt)
Non-logged intervals displayed	
Trace Annotation	
LITHO	CAS
ANK	57g
OZ	ORA
DM	UC
	GRU
	TAL
	BIA
	UCB
	Start-of-hole annotation color
	End-of-hole annotation color
Non-logged intervals displayed	
Triangulations	35 LEVEL DRIFT CLAIM BOUNDARY
Digitised drafting	File: UDC\AIMS1.DWG Object: CLAIMS
Grid lines	MINE GRID

RECEIVED
MAY 19 1999
GEOSCIENCE ASSESSMENT
OFFICE

2.19098

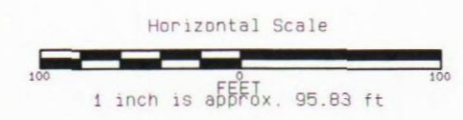


Placer Dome (CLA) Limited	
DDH 30087 Section	Scale: 1:1150
152 Degree Azimuth	Date: 17-May-99
Section Looking SW	Project: UG
	Drawn By: PNL
	Checked:
	Approved:
	Drawing No.



LEGEND	
Left Side Trace Annotation	annotated
ROCK	
Non-logged intervals displayed	
Right Side Trace Annotation	AU_DWT Au assays in DWT (1 oz = 20 dwt)
Non-logged intervals displayed	
Trace Annotation	
	Start-of-hole annotation color
	End-of-hole annotation color
Non-logged intervals displayed	
Triangulations	CLAIM BOUNDARY 20 LEVEL POINT
Digitised drafting	File: UGCLAIMS1.DWG Object: UGCLAIMS1
Grid lines	MINE GRID

2.19098

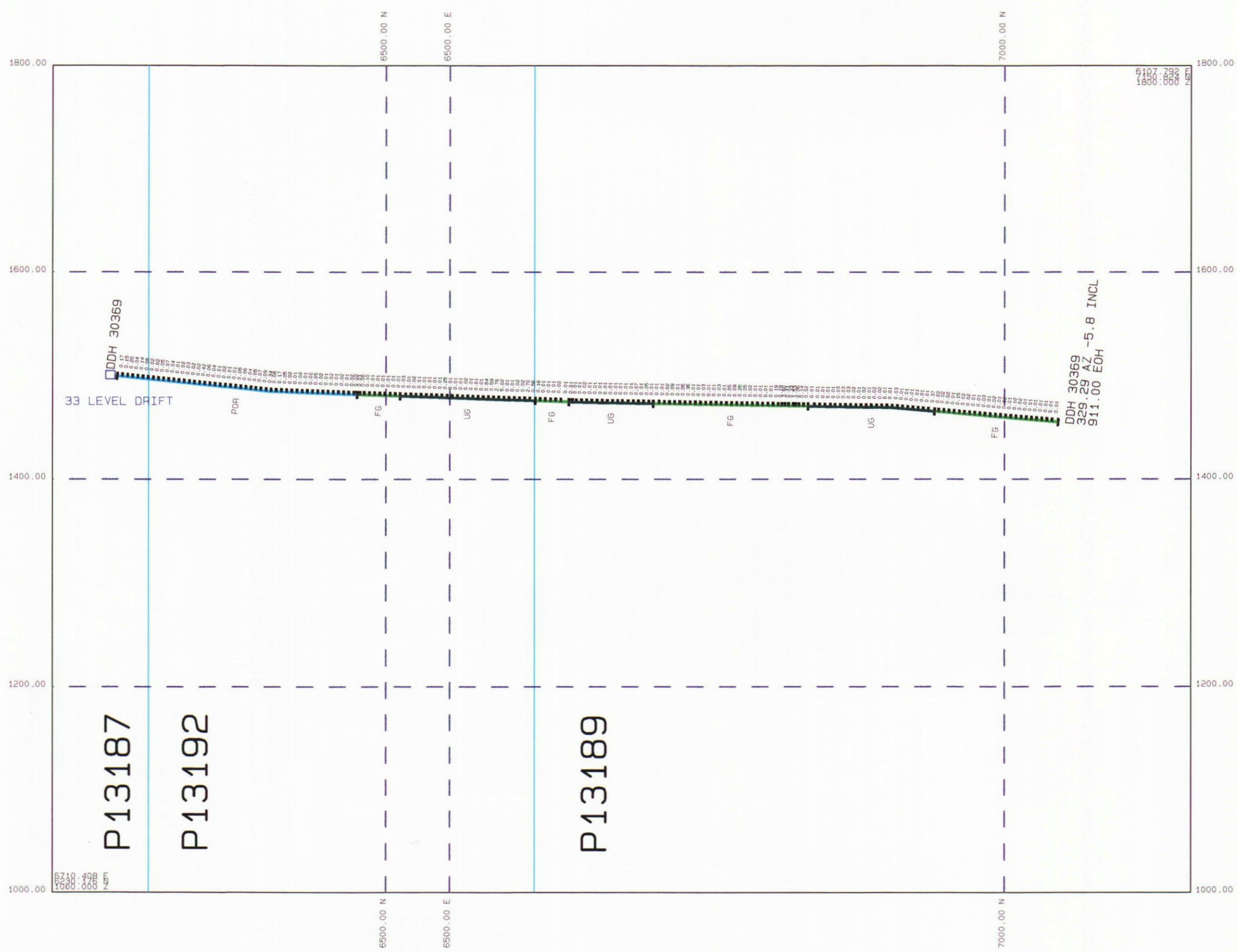


RECEIVED
MAY 19 1999
GEOSCIENCE ASSESSMENT
OFFICE

Placer Dome (CLA) Limited	
DDH 30368 Section	Scale: 1:1150
147 Degree Azimuth	Date: 14-May-99
Section Looking SW	Project: UG
	Drawn By: PNL
	Checked:
	Approved:
	Drawing No.

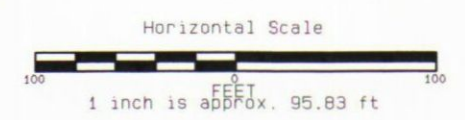


42A06NE2011 2.19098 TISDALE

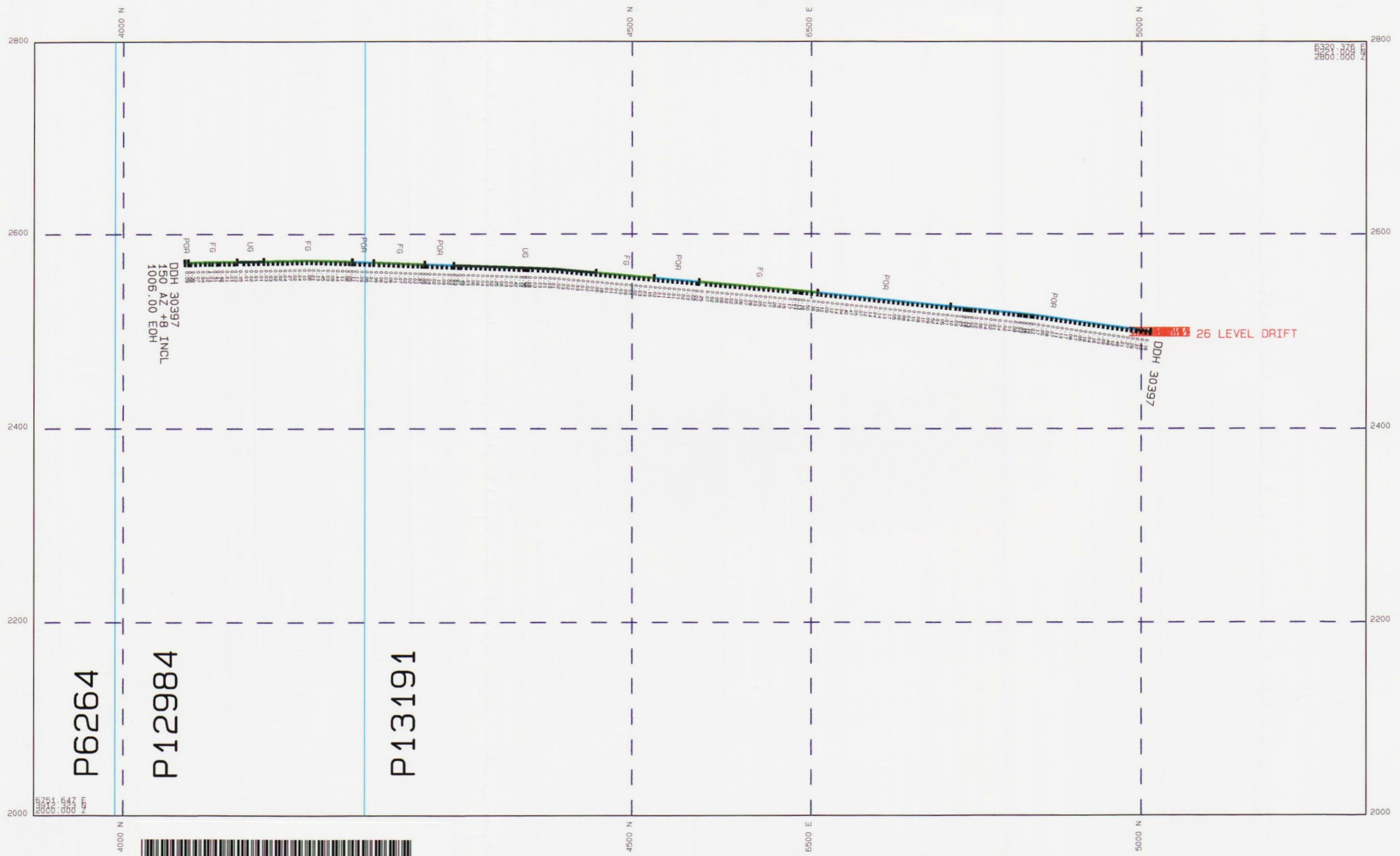


LEGEND	
Left Side Trace Annotation	
	ROCK
Non-logged intervals displayed	
Right Side Trace Annotation	
	AU_DWT Au assays in DWT (1 oz = 20 dwt)
Non-logged intervals displayed	
Trace Annotation	
	LITHO CAS GRA CON BIA
	L.C S7G SCLT SWR TAC RA UG
Start-of-hole annotation color	
End-of-hole annotation color	
Non-logged intervals displayed	
Triangulations	
	CLAIM BOUNDARY
	33 LEVEL DRIFT
Digitised drafting	
	File: UGCLAIMS1.DWG
	Layer: UGCLAIMS
	Object: 4
Grid lines	
	MINE GRID

2.19098

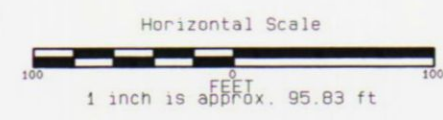


Placer Dome (CLA) Limited	
DDH 30369 Section	Scale: 1:1150
147 Degree Azimuth	Date: 14-May-99
Section Looking SW	Project: UG
	Drawn By: PNL
	Checked:
	Approved:
	Drawing No.



LEGEND				
Left Side Trace Annotation	annotated			
Non-logged intervals displayed	ROCK			
Right Side Trace Annotation	AU_DWT Au assays in DWT (1 oz = 20 dwt)			
Non-logged intervals displayed				
Trace Annotation				
LITHO	CAS	GR	CON	DIA
SLT	SLT	SLT	SLT	SLT
Start-of-hole annotation color				
End-of-hole annotation color				
Triangulations	26 LEVEL DRIFT			
Digitised drafting	File Layer Object			
Grid lines	MINE GRID			

2.19098



RECEIVED
MAY 19 1999
GEOSCIENCE ASSESSMENT
OFFICE



Placer Dome (CLA) Limited	
DDH 30397 Section	Scale: 1:1150
162 Degree Azimuth	Date: 14-May-99
Section Looking SW	Project: UG
	Drawn By: PNL
	Checked:
	Approved:
	Drawing No.