

42A06NW0101 2.1449 GODFREY

010

Ecstall Mining Limited  
Report on Geophysical Work  
in  
Godfrey Township

Claims: P 363459, P 363460, P 363517

A geophysical survey, comprising magnetometer and horizontal loop traverses was carried out over this group of three contiguous claims, located in Lot 1, Con. II and III of Godfrey Township.

Access is by means of Highway 576 which passes immediately to the south of the claim group.

Previous work on the property includes a magnetic survey and diamond drilling (five holes) carried out by Minesta Gold Mines in 1938-39 (File T-89). The approximate location of the drill holes is shown on the magnetic map accompanying this report.

MARCH, 1974

From the drill results it appears that most of the claim group is underlain by tuffaceous sediments intruded by east-west trending bodies of feldspar porphyry. Overburden thickness ranges from 110 to 190 feet.

Results:

Excepting the two NNW striking magnetic highs on Line 0+00 and 3+00W, there is very little magnetic relief, indicating a lack of susceptibility contrast between the sediments and the intrusive porphyritic bodies. The magnetic highs may be caused by either gabbroic rocks, or, more likely in view of their strike, by short segments of diabase dykes. Unfortunately, the drill holes do not intersect either zone.

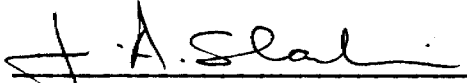
The horizontal loop results show no definite anomalies, the variations in the Quadrature profiles must be attributed to changes in overburden conductivity as there are no corresponding In-phase responses. In view of the thick overburden, deeper penetration would

be desirable but the presence of power lines along the highway precluded the use of coil separations greater than 300 feet.

Recommendations:

No further work appears warranted in view of the negative geophysical results and the thorough previous drill investigation.

JAS:ss

  
J. A. Slankis.



42A06NW0101 2.1449 GODFREY

GEOPHYSICAL - GEOLOGIC...  
TECHNICAL DATA STATEMENT

900

RECEIVED

APR 1 - 1974

PROJECTS UNIT

TO BE ATTACHED AS AN APPENDIX TO TECHNICAL REPORT  
FACTS SHOWN HERE NEED NOT BE REPEATED IN REPORT  
TECHNICAL REPORT MUST CONTAIN INTERPRETATION, CONCLUSIONS ETC.

Type of Survey Geophysical  
Township or Area Godfrey Township  
Claim holder(s) Ecstall Mining Limited  
Box 175, Suite 5000, Commerce Ct. Toronto M5L1e7  
Author of Report J. A. Slankis  
Address As Above  
Covering Dates of Survey Dec. 9, 1973-March 15, 1974  
4.4 (linecutting to office)  
Total Miles of Line cut 4.4

MINING CLAIMS TRAVERSED  
List numerically

P 363459  
(prefix) (number)  
P 363460  
P 363517

SPECIAL PROVISIONS  
CREDITS REQUESTED

ENTER 40 days (includes  
line cutting) for first  
survey.

ENTER 20 days for each  
additional survey using  
same grid.

Geophysical  
-Electromagnetic 40-20  
-Magnetometer 20-40  
-Radiometric \_\_\_\_\_  
-Other \_\_\_\_\_  
Geological \_\_\_\_\_  
Geochemical \_\_\_\_\_

DAYS  
per claim

AIRBORNE CREDITS (Special provision credits do not apply to airborne surveys)

Magnetometer \_\_\_\_\_ Electromagnetic \_\_\_\_\_ Radiometric \_\_\_\_\_  
(enter days per claim)

DATE: Mar. 28, 1974 SIGNATURE: J. A. Slankis  
Author of Report or Agent

PROJECTS SECTION

Res. Geol. \_\_\_\_\_ Qualifications 2.686

Previous Surveys Nil

Checked by \_\_\_\_\_ date \_\_\_\_\_

GEOLOGICAL BRANCH \_\_\_\_\_

Approved by \_\_\_\_\_ date \_\_\_\_\_

GEOLOGICAL BRANCH \_\_\_\_\_

Approved by \_\_\_\_\_ date \_\_\_\_\_

TOTAL CLAIMS 3

If space insufficient, attach list

OFFICE USE ONLY

Show instrument technical data in each space for type of survey submitted or indicate "not applicable"

## GEOPHYSICAL TECHNICAL DATA

### GROUND SURVEYS

MAG: 258  
Number of Stations EM: 170 Number of Readings MAG: 281  
EM: 170  
Station interval 100' with 50' detail  
Line spacing 300'  
Profile scale or Contour intervals MAG: 25 gamma contours EM: 1"=20% profiles  
(specify for each type of survey)

### MAGNETIC

Instrument Geometrics G816 Proton Precession, Total Field Magnetometer  
Accuracy - Scale constant ± 2 gammas  
Diurnal correction method Looping  
Base station location On line 0+00 at base line

### ELECTROMAGNETIC

Instrument Geonics EM-17  
Coil configuration Horizontal Loop  
Coil separation 300'  
Accuracy ± 2% on In-Phase & Quadrature  
Method:  Fixed transmitter  Shoot back  In line  Parallel line  
Frequency 1600 Hz  
(specify V.L.F. station)  
Parameters measured In-phase and Quadrature components of secondary field as  
GRAVITY percent of transmitted field.

Instrument \_\_\_\_\_  
Scale constant \_\_\_\_\_  
Corrections made \_\_\_\_\_  
Base station value and location \_\_\_\_\_

Elevation accuracy \_\_\_\_\_

### INDUCED POLARIZATION - RESISTIVITY

Instrument \_\_\_\_\_  
Time domain \_\_\_\_\_ Frequency domain \_\_\_\_\_  
Frequency \_\_\_\_\_ Range \_\_\_\_\_  
Power \_\_\_\_\_  
Electrode array \_\_\_\_\_  
Electrode spacing \_\_\_\_\_  
Type of electrode \_\_\_\_\_

Jamieson Twp. (M.288)

Gap Radar Sta.  
Dept. of National Defence  
Withdrawn from Staking  
Sec 34(D) of Mining Act. File 16905

Turnbull Twp. (M.316)

VI

V

IV

III

II

I

Mountjoy Twp. (M.302)

THE TOWNSHIP OF  
OF

**GODFREY**

DISTRICT OF  
COCHRANE

PORCUPINE  
MINING DIVISION

SCALE: 1-INCH = 40 CHAINS

**LEGEND**

PATENTED LAND	● or ⊕
CROWN LAND SALE	C.S.
LEASES	■ or ⊙
LOCATED LAND	Loc.
LICENSE OF OCCUPATION	L.O.
MINING RIGHTS ONLY	M.R.O.
SURFACE RIGHTS ONLY	S.R.O.
ROADS	—
IMPROVED ROADS	—
KING'S HIGHWAYS	—
RAILWAYS	—
POWER LINES	—
MARSH OR MUSKEG	—
MINES	⋈
CANCELLED	C.
PATENTED S.R.O.	⊙

**NOTES**

400' surface rights reservation along the shores of all lakes and rivers.

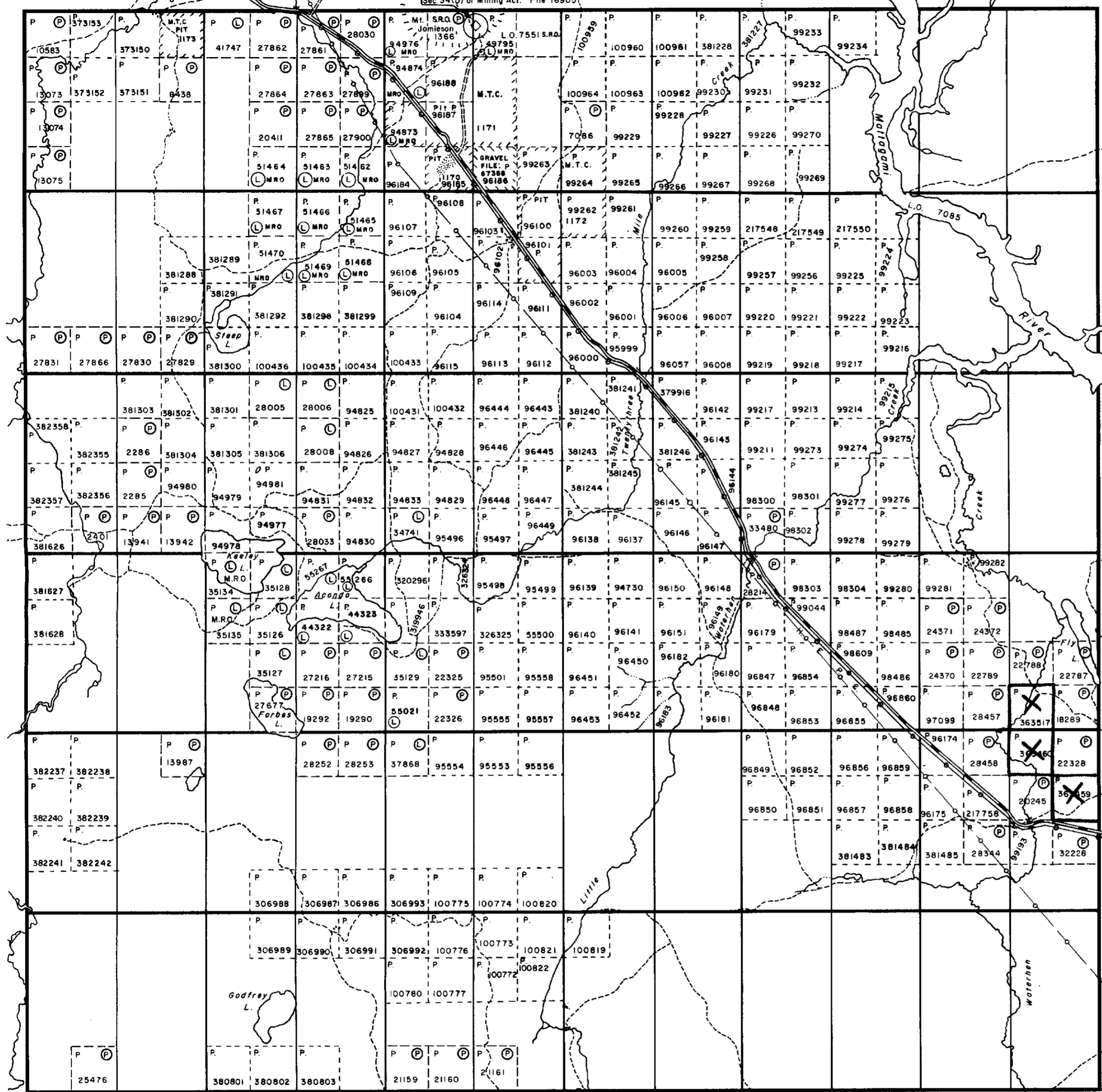
Flooding rights on either side of the Mattagami to H.E.P.C.

- MINING LANDS -  
DATE OF ISSUE  
APR - 2 1974  
MINISTRY  
OF NATURAL RESOURCES

File 2.1449

PLAN NO. **M.284**

ONTARIO  
MINISTRY OF NATURAL RESOURCES  
SURVEYS AND MAPPING BRANCH



Bristol Twp. (M.264)

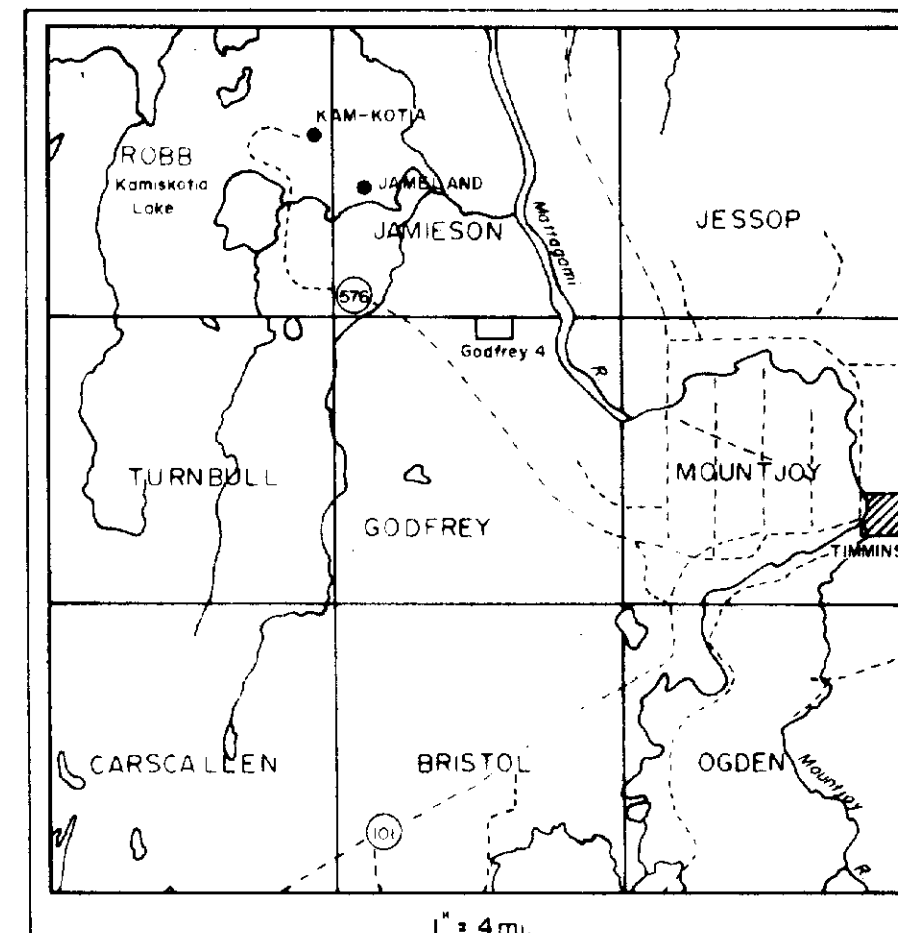


42A06N0101 2.1449 GODFREY

LOT 7

CON. I

SUBDIVISION ANNULLED

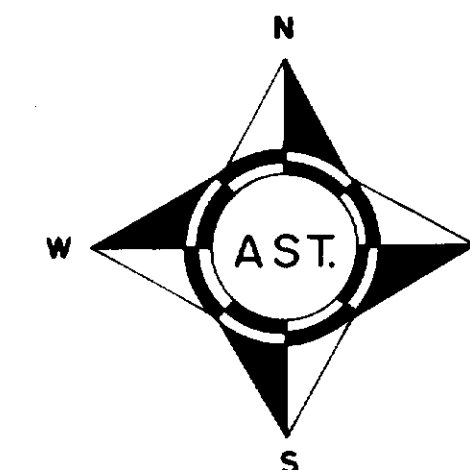


LOCATION MAP

Base Station

JAMIESON TWP.  
GODFREY TWP.

Lot 3 Lot 2  
Lot 3 Lot 2

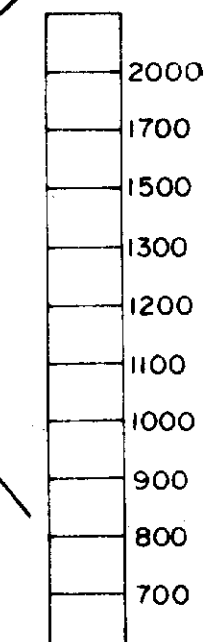


HOLLINGER MINES LTD.  
**GODFREY GROUPS**  
GODFREY TWP. ONT.  
**MAGNETIC SURVEY**

SCALE: 1 INCH TO 400 FEET

2.1398

Contour Intervals (in gammas)



CON. VI

← Godfrey Group No. 4

Creek

Mile

Twenty three

0+00 B.L.

210



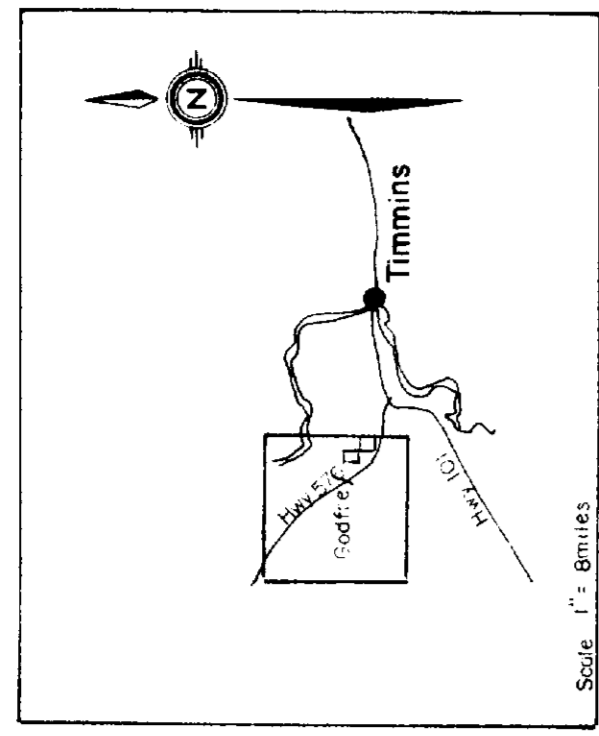
42A86N0181 2.1449 GODFREY

LOT 7

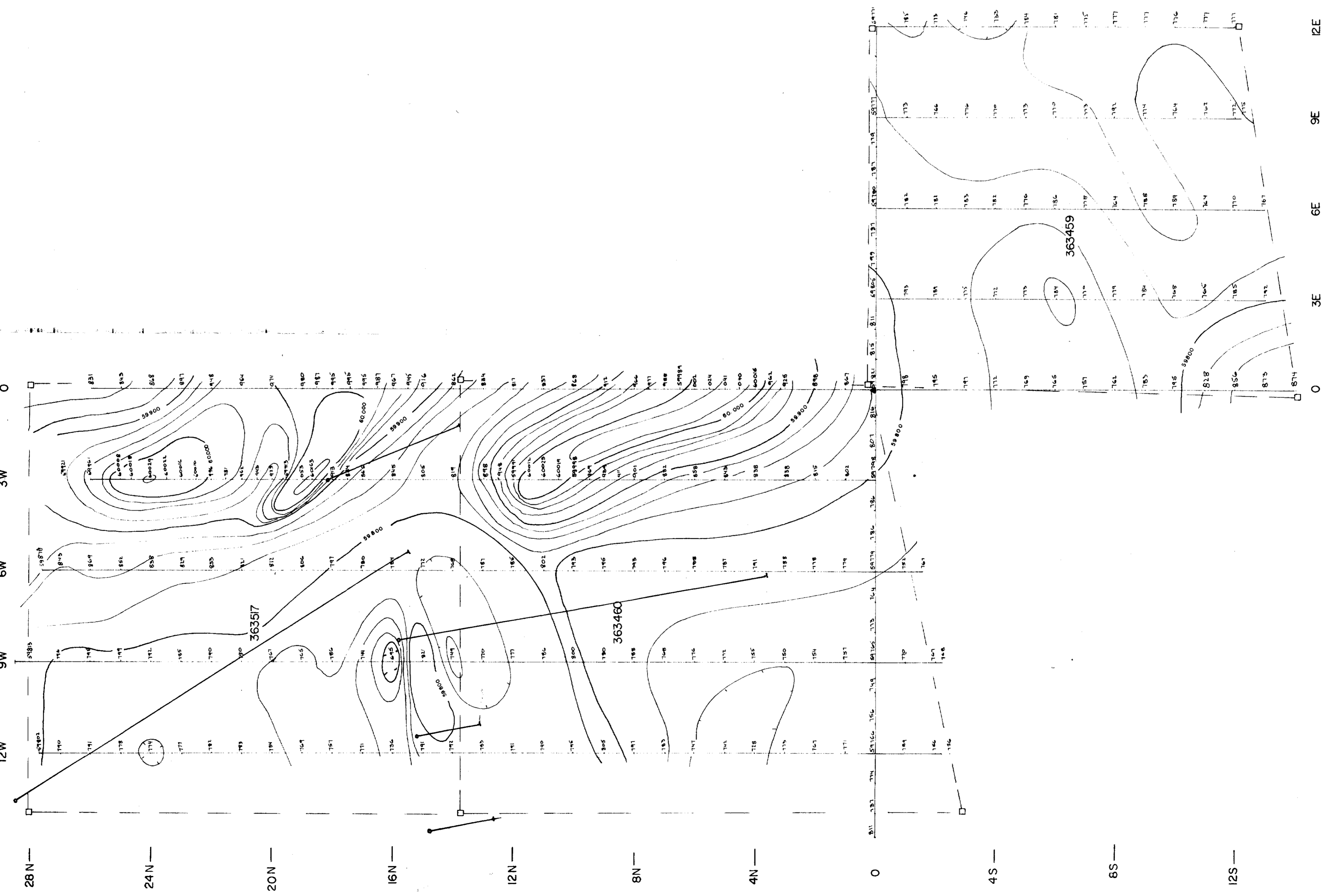
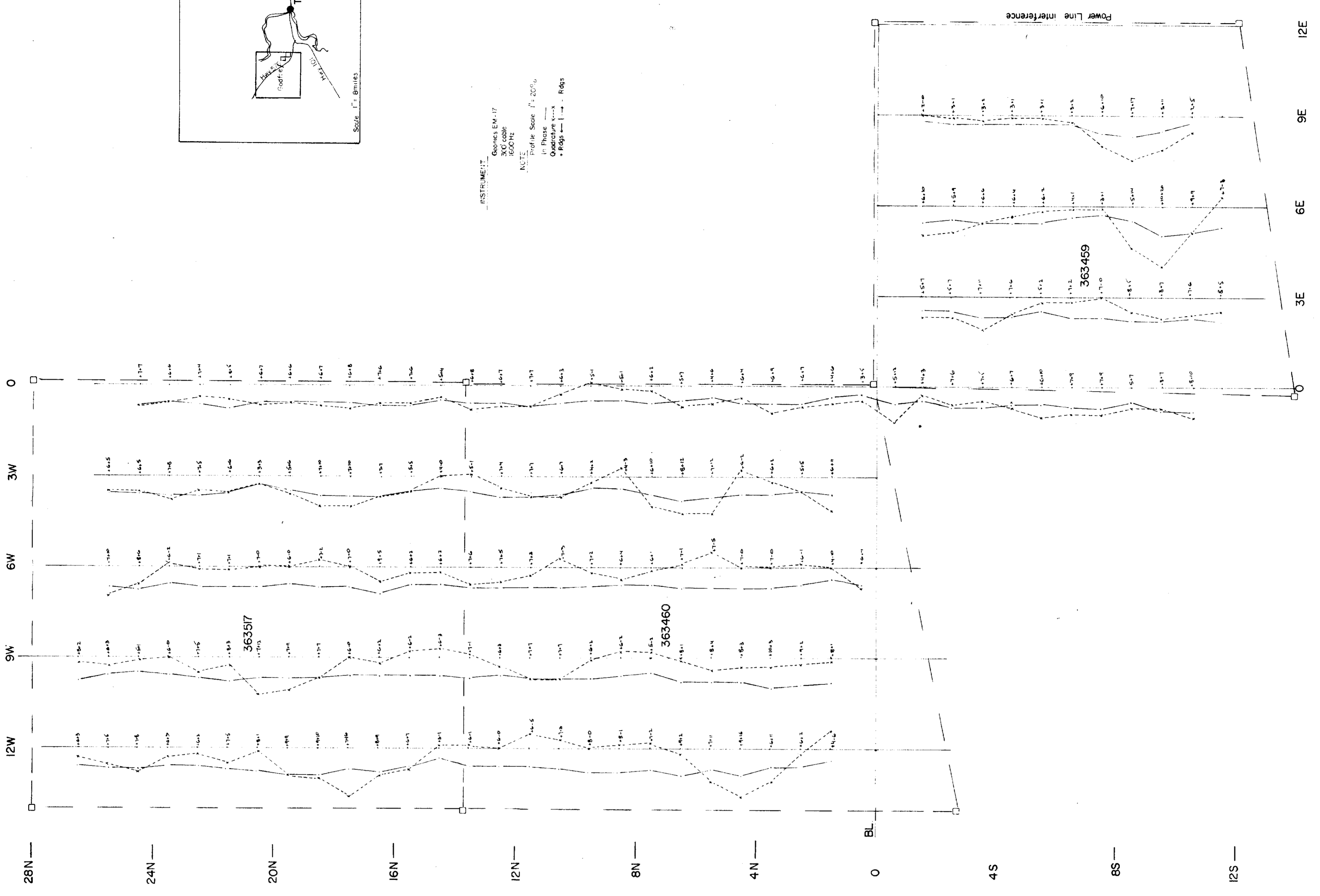
LOT 6

LOT 5

LOT 4



INSTRUMENT:  
 Geomax EM-17  
 2000000  
 2000000  
 2000000  
 NOTE:  
 Profile Scale 1:2000  
 Contour Interval  
 1:6000



21449  
 SCALE ONE INCH = 200'

ECSTALL MINING LTD.	
MAG. & EM SURVEYS	
GODFREY 26	
WORK BY	DATE
W. G. D.T.	JUN 1974
PROJECT	44

