

DIAMOND DRILLING



010

TOWNSHIP: Deloro

REPORT No.: 20

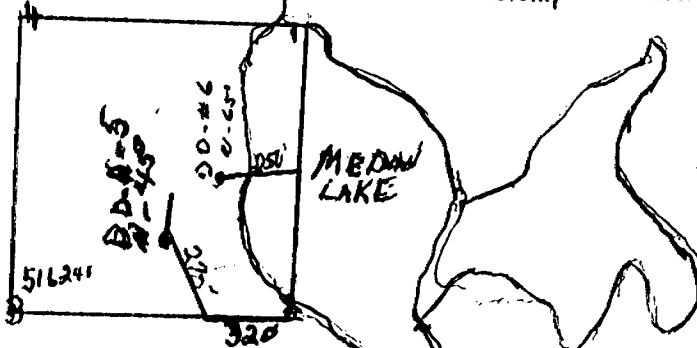
WORK PERFORMED BY: Joseph St. Gelais

<u>CLAIM No.</u>	<u>HOLE No.</u>	<u>FOOTAGE</u>	<u>DATE</u>	<u>NOTE</u>
P 516241	L.J. 6	110.0	Sept/81	(1)
	L.J. 5	106.0	Aug/81	(1)
	L.J. 1	20.0	May/81	(1)
	L.J. 2	107.0	May/81	(2)
	L.J. 3	109.0	June/81	(2)
	L.J. 4	104.0	July/81	(2)

NOTES: (1) #412-81
(2) #413-81

The Required information is as follows.

(Attach a list if this space is insufficient)



Date Oct 1/81

[Signature]
Signature of Recorded Holder or Agent

FALSE STATEMENT IN THIS REPORT

North _____
 East _____
 Elev. _____
 Azim. Mag. North
 Dip 65°

DIAMOND DRILL REPORT

Hole No. L.S. #6
 Commenced Sept 20/81
 Finished Oct 3/81
 Purpose of Hole _____

PROPERTY Ridge Dome Prop.
Delora twp.

FROM	TO	DESCRIPTION	CORE SAMPLES					DESCRIPTION OF SAMPLE
			FROM	TO	RECOV.	WIDTH	ASSAY	
0	35	Chloritic Amygd. Andesite						LJ #6 samples for Credits
		Ground Core 0 - 1'						LJ #6 @ 20'
		3' - 5.2'						
		21 - 24						
35	37	2' of highly siliceous magnetic iron formation diss magnetite red spots due to hematite aff.						LJ #6 @ 40'
37	40	chl. Andesite						LJ #6 @ 60'
40	41.8	sil. l.f.						LJ #6 @ 80'
41.8	45	chl. Andesite	35	37	2	2		LJ #6 @ 100'
45	46.7	1.7" sil. l.f. with 4" qtz str on the contact.	45	46.7	1.7	1.7		siliceous l.f.
46.7	54.5	Chl. Andesite locally carbonatized						4" qtz str + l.f.
54.5	58	Sil. l.f.						
55	57	chl. Andesite						
57	58	1" sil. l.f.						
58	96.8	Chl. Andesite occ. qtz str.						

North _____
 East _____
 Elev. _____
 Azim. Magnetic North
 Dip 45° at collar

DIAMOND DRILL REPORT

Commenced Aug 1/81
 Finished Aug 15/81
 Purpose of _____
 Hole logged by
L.D. MacKenzie
L.T. #5

PROPERTY Delora twp.

FROM	TO	DESCRIPTION	CORE SAMPLES					DESCRIPTION OF SAMPLE
			FROM	TO	RECOV.	WIDTH	ASSAY	
0	3.7	Bleached schistose chloritic Andesite. Schistosity at 50° to C.A. Contact at 90° to C.A.						
3.7	5.0	Siliceous l.f. minor bands of magnetite. Core very magnetic.	9.2	9.6	4"	4"	AV	Sil. l.f. magnetic brecciated
5.0	7.5	Green chloritic Andesite						
7.5	9.6	Siliceous l.f. with streaks of black magnetite locally brecciated.						
9.6	17	Green carbonatized massive Andesite	44	45	1.0	1.0	AV	Chl. And + sm. Qtz + col. str.
17	18.7	Siliceous magnetic l.f.						
18.7	40.7	Chloritic Carb. Andesite spotted app. to Core a few small calcite str.						
40.7	41	Chloritic Tuff magnetic banding at 45° to C.A.						
41	57	massive chloritic Andesite white calcite patches.						
		57 Hole to be continued.						

L.D. MacKenzie

North _____
 East _____
 Elev. _____
 Azim. magnetic North
 Dip 50°

DIAMOND DRILL REPORT

PROPERTY Delora Township
Ridge Dome Prop.

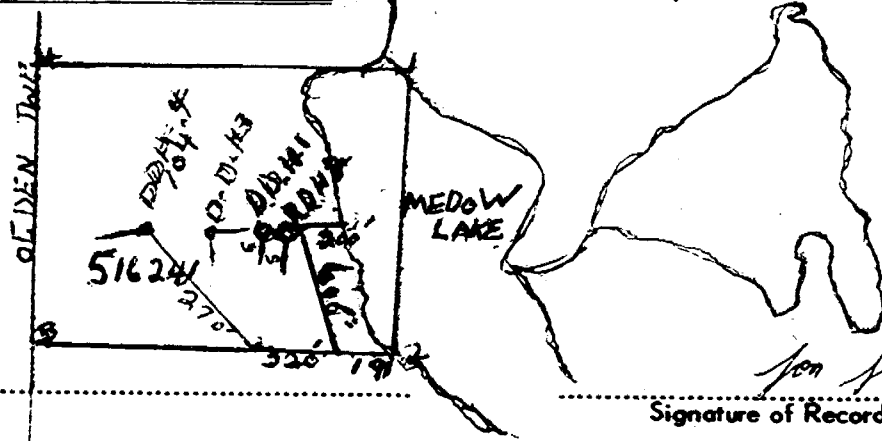
Hole No. L.J. #5
 Commenced Aug 1/1981
 Finished Oct 3/1981
 Purpose of _____
 Hole logged for
assessment credits.
by C.D. MACKENZIE

FROM	TO	DESCRIPTION	CORE SAMPLES					DESCRIPTION OF SAMPLE
			FROM	TO	RECOV.	WIDTH	ASSAY	
0	57	logged and filed for assessment credits Aug 31. /81						
57	77	Chloritic amygdaloidal Andesite dark green in color spotted with calcite filled amygdules slightly schistose 77 - 82 Lost core						LJ #5 @ 60' sample for credits LJ #5 @ 80' LJ #5 @ 90' LJ #5 @ 100'
82	106	Chloritic Andesite Tuff banding at 60° to core axis locally fragmental becoming brecciated and cut by milky white quartz veins from 86.2 to 93'	86	90	3	3		20% qtz strcs. v.l. min 60% qtz veins with chlorite patches.
		106' End of hole Tagged by C.D. Mackenzie						

For Land Survey - the name and address of Ontario Land surveyor.

A0240
Prospector's Licence

The Required Information is as Follows: (Attach a list if this space is insufficient)



D.D.H. #1-20'
60° S

D.D.H. #3-102'
50° S

D.D.H. #3
55° S - 109'

D.D.H. #4-104'
45° S - 10° W

100 H 9/20/05

Date

Signature of Recorded Holder or Agent

The Mining Act

G A FALSE STATEMENT IN THIS REPORT AI

North _____
 East _____
 Elev. _____
 Azim. 180° magnetic
 Dip 50° at collar

DIAMOND DRILL REPORT

Hole No. L.J. # 1
 Commenced May 12/81
 Finished May 21/81
 Purpose of Test quartz veins
 Hole Logged by
E.D. MacKenzie

PROPERTY Delora Twp
old Ridge Dome Prop.

FROM	TO	DESCRIPTION	CORE SAMPLES					DESCRIPTION OF SAMPLE
			FROM	TO	RECOV.	WIDTH	ASSAY	
0	20	Chloritic Saprotose Andesite Tuff cut by quartz veins. Locally bleached and carbonatized. Very fine grained. 7-18 sm quartzes, 19-20 lost core.	0	2	2	2	AU	95% qtz minor br. ankerite + Tourmaline.
			2	3	1	1	AU	80% qtz + chl sch.
			3	5	2	2	AU	Sm qtz str in chl. And Tuff? Up to 2" in width.
			5	7	2	2	AU	3 qtz veins 1, 7" in width.
								O.D.M. sample @ 17'
		20' - End of hole						
		E.D. MacKenzie						

North _____
 East _____
 Elev. _____
 Azim. Magnetic 180°
 Dip. 45° at collar.

DIAMOND DRILL REPORT

PROPERTY Deloria Trp.

Hole No. L.J. # 4
 Commenced July 4/81
 Finished July 30/81
 Purpose of Testing quartz
 Hole Veins and 1/2 F.
 Logged by C.D. MacKenzie

FROM	TO	DESCRIPTION	CORE SAMPLES					DESCRIPTION OF SAMPLE
			FROM	TO	RECOV.	WIDTH	ASSAY	
0	104	Fine grd light green massive Andesite cut by Qtz str containing brown ankerite						Samples for O.D.M. 25' 50' 75' 88.4'
		6.4 to 9.5 quartz vein, brown ankerite and black tourmaline throughout sects	6.4	9.1	2.7	2.7		Whole core taken - Qtz carrying tourmaline + ankerite.
		23 to 23.5 purplish Carb alt. in And.						
		25 - 60 Schistose And cut by occ sm Qtz-calc str.	16.0	16.4	4"	4"		Qtz str in And. All core taken in samples
		60 - 75 Cut by Qtz Veins bleached section Talc + Carb present	50.0	50.2	2"	2"		Chl Sch. + Carb str
		75 - 88.4	65.5	65.7	2"	2"		Qtz str. as above.
		88.4 - 104 ground Core.						
		104 End of hole						12461 Sample from surface 5' in below Qtz + Talc silvery white.
		<u>C.D. MacKenzie</u>						