

42A06NW0224 20 OGDEN

010

DIAMOND DRILLING

TOWNSHIP: Ogden

REPORT No.: 20

WORK PERFORMED BY: J. Campbell

<u>CLAIM No.</u>	<u>HOLE No.</u>	<u>FOOTAGE</u>	<u>DATE</u>	<u>NOTE</u>
P 499909	C-81-1	450.0	Apr/81	(1) (2)
	C-81-2	450.0	Apr/81	(1) (2)
	C-81-3	450.0	May/81	(1) (2)
P 499910	C-81-4	325.0	May/81	(2)
	C-81-5	325.0	May/81	(2)

NOTES: (1) #153 & 157 - 1981  
(2) OMEP Report: #OMEP 40-80

RESULTS of DIAMOND DRILLING

by

GOSSAN RESOURCES LIMITED

on

OGDEN TOWNSHIP, ONTARIO PROPERTY

Timmins, Ontario,  
June 23, 1981.

R. J. Bradshaw, P. Eng.,  
Geologist.

## GENERAL

A report by the writer, dated July 30, 1980, recommends a programme of 2000 feet of diamond drilling in the southwest sector of Ogden Township to investigate a gold occurrence.

The drilling programme consisting of five holes has been completed.

## Summary of Drilling

With reference to the 1965 discovery hole, the 1981 drilling is summarized as follows:

<u>Hole No.</u>	<u>*Location</u>	<u>Direction</u>	<u>Dip</u>	<u>Depth</u>
C-81-1	375' N	grid South	65°	450'
C-81-2	375' N 100' E	grid South	65°	450'
C-81-3	375' N 100' W	grid South	65°	450'
C-81-4	75' N 10' W	grid North	55°	325'
C-81-5	75' N 60' W	grid North	55°	325'
Five holes totalling				2000'

\* See Attached Plan

## Results of Drilling

Of 72 samples totalling approximately 300 feet of core taken from the five drill holes, all assayed trace in gold. The gold values recovered in the 1965 drill programme are associated with a pyritized silicified fragmental volcanic. This unit, apparently intersected in two of the five holes drilled, contains an

unusually high pyrite content, but without significant gold content.

#### Conclusions and Recommendations

Including the 1965 programme, seven holes at intervals of 50 to 100 feet have been drilled adjacent to the initial 1965 discovery hole without finding gold values that may be related to the original discovery. It is, therefore, concluded that any gold deposition in the immediate vicinity of the drilling lacks economic proportions. In fact, the validity of the original gold values may be questioned.

On the other hand the pyritized silicified fragmental volcanic is considered to be a potential host for gold deposition elsewhere. Should this unit display adequate dimensions it is likely to respond as a conductor using a deep penetrating vertical loop unit. It is, therefore, proposed that a portion of the claim group be surveyed using a McPhar vertical loop electromagnetic unit and magnetometer to trace the pyritized volcanic. This survey should be extended from the north trending road on claim 578970 eastward to cover claims 499907 and 499910 and would involve approximately 2.5 miles of survey along north-south lines at 400 foot intervals.

Cost of this work would be approximately \$1500.

Should anomalous electromagnetic responses be detected interpreted to represent the pyritized horizon, further drilling would be merited. A sum of \$25,000. should be allocated for this possibility.

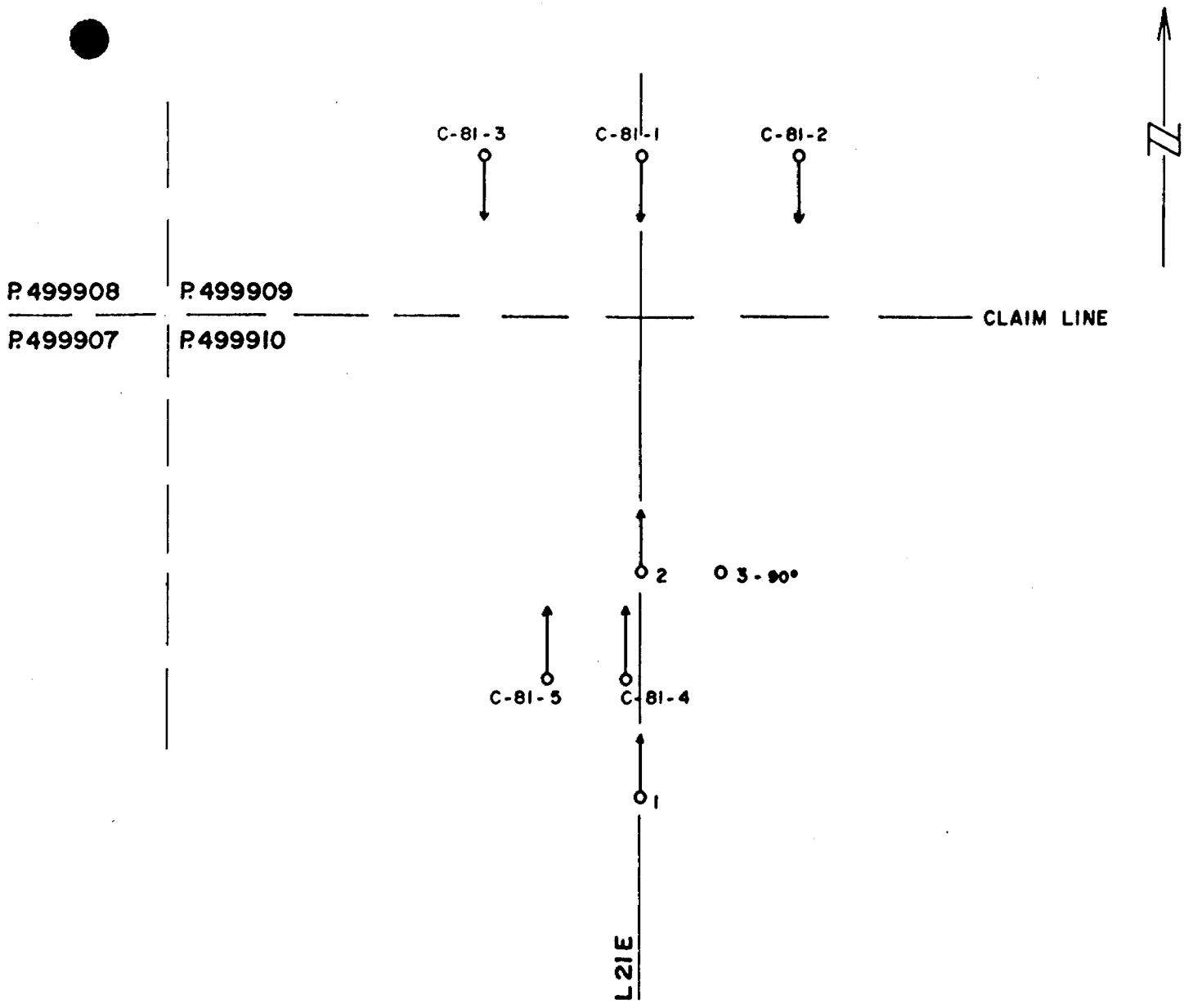
Respectfully submitted,  
SHIELD GEOPHYSICS LIMITED,



A handwritten signature in black ink, appearing to read 'R. J. Bradshaw', written over the seal.

Timmins, Ontario  
June 23, 1981.

R. J. Bradshaw, P. Eng.,  
Geologist.



**DRILL HOLE LOCATION PLAN**

**GOSSAN RESOURCES LIMITED**

**OGDEN TOWNSHIP, ONTARIO**

**1" = 100'**

# DIAMOND DRILL RECORD

Hole No. C-31-1 Sheet No. 1

Property CARLSON OGDEN Acct 0-3  
 Location OGDEN TOWNSHIP MINING CLAIM 499909  
1/2 MILE EAST OF MATTAGAMI RIVER  
8 MILES WEST OF DOWNTOWN TIMMINS, ONT.  
 Latitude 9+00N  
 Departure 21+00E  
 Bearing GRID SOUTH 300'E and 100'N  
of #3 Post

Dip

COLLAR | -65°  
200' | -60° (CORRECTED) ACID TEST  
450' | -59° (CORRECTED)  
 Total Footage 450 FEET AQ WIRELINE.  
99% RECOVERY

Elev. Collar \_\_\_\_\_  
 Datum \_\_\_\_\_  
 Date Started APRIL 20 1981  
 Date Completed APRIL 25 1981  
 Drilled by DOMINIK DRILLING TIMMINS, ONT  
 Logged by Jim W. Campbell P. Eng.

Footage		Formation	Sample Number	Sample Footage	Sample Width	Gold Sample	Gold Sludge	Remarks
From	To							
0	45'	CASING	0251	311-317	6.0	TR		
		LATER REAMED TO 51'	0252	317-322	5.0	TR		
			0253	322-327	5.0	TR		
			0254	327-332	5.0	TR		
45	385	DIABASE	0255	332-337	5.0	TR		
		MASSIVE FINE GRAINED DARK GREEN	0256	337-342	5.0	TR		
		HOMOGENEOUS (NO LINEATION ANGLES)	0257	342-347	5.0	TR		
		MUCH BROKEN CORE	0258	347-352	5.0	TR		
			0259	352-357	5.0	TR		
		RARE QUARTZ CARBONATE THREADS	0260	357-362	5.0	TR		
		AND RARELY ASSOCIATED WITH FINE	0261	362-367	5.0	TR		
		GRAINED PYRITE	0262	367-372	5.0	TR		
		THREADS GENERALLY AT 35° TO CORE AXIS	0263	372-377	5.0	TR		
		SOME AT 70°	0264	377-382	5.0	TR		
			0265	382-385	3.0	TR		
		296-299 1'0 GROUND CORE (LOST)	0266	385-390	5.0	TR		
			0267	436-440	4.0	TR		
		305-309 CARBONATE THREADS AND	0268	440-445	5.0	TR		
		ALTERATION NOTICEABLE.	0269	445-450	5.0	TR		
		TRACE F.G. PYRITE.						
		LINEATION AT 35°.						
		311-385. SLIGHT SILICA INCREASE						
		3% FINE GRAINED PYRITE.						
385	436	TALCOSE ZONE						

(CONT. SHEET 2)

Date of Examination APRIL 25 1981

# DIAMOND DRILL RECORD

Hole No. C-81-1 Sheet No. 2

Property CARLSON - OGDEN ACCT 0-3  
 Location OGDEN TOWNSHIP  
 \_\_\_\_\_  
 Latitude \_\_\_\_\_  
 Departure \_\_\_\_\_  
 Bearing \_\_\_\_\_

Dip  
 \_\_\_\_\_  
 \_\_\_\_\_  
 \_\_\_\_\_  
 \_\_\_\_\_  
 \_\_\_\_\_  
 Total Footage \_\_\_\_\_

Elev. Collar \_\_\_\_\_  
 Datum \_\_\_\_\_  
 Date Started \_\_\_\_\_  
 Date Completed \_\_\_\_\_  
 Drilled by \_\_\_\_\_  
 Logged by for W Campbell P. Eng

Footage		Formation	Sample Number	Sample Footage	Sample Width	Gold Sample	Gold Sludge	Remarks
From	To							
385	436	TALCOSE ZONE SOAPY FEEL. F.G. PYRITE 3% 385-390 404-406 411-412 428-436 - CONTACT ZONE SHOWS BANDING SS <sup>TA</sup> TACA.						
436	450	GRANODIORITE. FRESH UNALTERED MEDIUM GRAINED INCREASING SILICIFICATION AND COARSER AWAY FROM CONTACT. 5% - 7% MEDIUM GRAINED PYRITE THROUGHOUT.						
450		END OF HOLE						
		ACID DIP TESTS AT 200' 60° 450' 59°						
		CORE RECOVERY - 99%						
		CORE STORED AT H.D CARLSON RESIDENCE						
		CASING PARTIALLY RECOVERED (SANDED IN)						

Date of Examination APRIL 25 1981



# DIAMOND DRILL RECORD

Hole No. C-81-2 Sheet No. 1

Property CARLSON - OGDEN ACCT 0-3  
 Location OGDEN TOWNSHIP MINING CLAIM #99909 COLLAR -65°  
8 MILES WEST OF DOWNTOWN TIMMINS  
ONT.  
 Latitude 9+00 NORTH  
 Departure 22+00 EAST  
 Bearing GRID SOUTH  
 Dip 60° CORRECTED  
56° CORRECTED  
 200' 450'  
 400' E and 100' N  
 of #3 Post.  
 Total Footage 450 FEET AQ WIRELINE (1" CORE)  
98% RECOVERY.

Elev. Collar \_\_\_\_\_  
 Datum \_\_\_\_\_  
 Date Started APRIL 26 1981  
 Date Completed APRIL 29 1981  
 Drilled by DOMINIK DRILLING TIMMINS  
 Logged by Jim W. Campbell P. Eng

Footage		Formation	Sample Number	Sample Footage	Sample Width	Gold Sample	Gold Sludge	Remarks
From	To							
0	40'	CASING	0271	97-102	5.0'	TR		
42	97	FELSIC TO INTERMEDIATE TUFF. LINEATION AT 55°-60° TO CORE AXIS. AMYGDULES 1/32" TO 1/16" SIZE 52'-56' MORE SILICEOUS	0272	102-107	5.0	TR		
			0273	107-112	5.0	TR		
			0274	112-117	5.0	TR		
			0275	117-122	5.0	TR		
			0276	122-125	3.0	TR		
		57-59'	0277	125-130	5.0	TR		
		60-61	0278	130-135	5.0	TR		
		77-79	0279	135-140	5.0	TR		
		EPIDOTE @ 79'	0280	140-145	5.0	TR		
		1% PYRITE 57-59	0281	145-150	5.0	TR		
		GROUND CORE - 95-96	0282	150-155	5.0	TR		
			0283	155-160	5.0	TR		
			0284	160-165	5.0	TR		
97	200	FELSIC TUFF. APHANITIC. WITH CONSIDERABLE FINE GRAINED PYRITE. QUARTZ THREADS AND STRINGERS. 106-125 25% PYRITE. 125-140 35% PYRITE. EPIDOTE - 95', 101-102', 112.5' 140-165 - 100% PYRITE. 165-185 - 3%-5% PYRITE. 185-200' 3% PYRITE						
200	237	FELSIC TUFF. SOME AGGLOMERATE LESS THAN 1% F.G. PYRITE LINEATION AT 60° TO CR. CONT. SHEET 2.						

Date of Examination APRIL 29 1981

# DIAMOND DRILL RECORD

Hole No. C-81-2 Sheet No. 2

Property CARLSON OGDEN ACCT 0-3  
 Location OGDEN TOWNSHIP

Dip

.....  
 .....  
 .....  
 .....

Elev. Collar.....  
 Datum.....  
 Date Started.....  
 Date Completed.....  
 Drilled by.....  
 Logged by J. W. Campbell P. Eng.

Latitude.....  
 Departure.....  
 Bearing.....

Total Footage.....

Footage		Formation	Sample Number	Sample Footage	Sample Width	Gold Sample	Gold Sludge	Remarks
From	To							
<u>237</u>	<u>270</u>	<u>FELSIC TUFF AGGLOMERATE AND BRECCIA. TRACE PYRITE. LINEATION AT 65° TO CA.</u>						
<u>270</u>	<u>396.5</u>	<u>TALCY CARBONATE ZONE. 25% QUARTZ-CARBONATE STRINGERS LINEATION OF THREADS AND STRINGERS AT 60° TO CORE AXIS NO SULPHIDES. TRACE PYRITE AT 310' MASSIVE WHITE BARREN QUARTZ TALC 330'-332, 293, 312, 342.  GROUND CORE 1.0' AT 332' 362' LINEATION AT 40° TO CA. 374' LINEATION AT 50° TO CA.  341' 1" STRINGER PYRITE F.G.  352'-357' FAULT ZONE MUDDY TALCY CHLORITIC. 3' GROUND CORE. 1' RECOVERED.</u>						
<u>396.5</u>	<u>397</u>	<u>CONTACT QUARTZ-CARBONATE VEIN. 1% PYRITE.</u>						

Date of Examination APRIL 29 1981

# DIAMOND DRILL RECORD

Hole No. C-81-2 Sheet No. 3

Property CARLSON-OGDEN ACCT 0-3  
 Location OGDEN TOWNSHIP

Latitude \_\_\_\_\_  
 Departure \_\_\_\_\_  
 Bearing \_\_\_\_\_

Dip  
 \_\_\_\_\_  
 \_\_\_\_\_  
 \_\_\_\_\_  
 \_\_\_\_\_  
 \_\_\_\_\_  
 \_\_\_\_\_  
 Total Footage \_\_\_\_\_

Elev. Collar \_\_\_\_\_  
 Datum \_\_\_\_\_  
 Date Started \_\_\_\_\_  
 Date Completed \_\_\_\_\_  
 Drilled by \_\_\_\_\_  
 Logged by J. W. Campbell P. Eng.

Footage		Formation	Sample Number	Sample Footage	Sample Width	Gold Sample	Gold Sludge	Remarks
From	To							
397	434	GRANODIORITE, MASSIVE PYRITE 3% - 5% MEDIUM GRAINED DISSEMINATED BARREN QUARTZ VEINLETS 3" WIDE ALL IN AT 50° OUT AT 50° 407, 409, 428.						
434	450	TALC-CARBONATE ZONE SIMILAR TO PREVIOUS ZONE ABOVE TRACE PYRITE.						
	450	END OF HOLE  (CASING SANDED TOGETHER UNABLE TO RECOVER.)  98% CORE RECOVERY  ACID TESTS (CORRECTED) 200' - 60° 450' - 56°						

Date of Examination APRIL 29 1981

# DIAMOND DRILL RECORD

Hole No. C-81-3 Sheet No. 1

Property Carlson-Ogden Acct. 0-3  
 Location Ogden township, Claim P. 499909  
200'E and 100'N  
 of #3 Post.  
 Latitude 900' north  
 Departure Line 200' east  
 Bearing Grid south.

Collar Dip -65°  
200' - 58°  
450' - 58°  
 Total Footage 450'

Elev. Collar \_\_\_\_\_  
 Datum \_\_\_\_\_  
 Date Started May 1, 1981.  
 Date Completed May 4, 1981.  
 Drilled by Dominik Drilling Co.  
 Logged by H. L. L. L.

Footage		Formation	Sample Number	Sample Footage	Sample Width	Gold Sample	Gold Sludge	Remarks
From	To							
0.0	46.0	Casing.						
46.0	290.0	Tuff. Banded @ $\approx 70^\circ$ to c.l.s. Aphanitic. May contain a few fragments. Colours medium-greenish-grey to light-greenish-grey to light-buff. Variable but on the whole minor silicification. Pyrite appears at 109' as disseminated grains and stringy patches and increases down the hole to 167', maybe 5-10% overall, heaviest at 155', there $\approx 50\%$ .	285	109.0-115.0	6.0	TR		
			286	115.0-120.0	5.0	.005		
			287	120.0-125.0	5.0	TR		
			288	125.0-130.0	5.0	TR		
			289	130.0-135.0	5.0	TR		
			290	135.0-140.0	5.0	TR		
			291	140.0-145.0	5.0	TR		
			292	145.0-150.0	5.0	TR		
			293	150.0-155.0	5.0	TR		
290.0	291.0	Dark gray diabase. Aphanitic. Massive.	294	155.0-160.0	5.0	TR		
291.0	299.0	Tuff, as above. More silicification. 4' of ground core @ 295'.	295	160.0-167.0	7.0	TR		
299.0	307.0	Diabase, as above.						
307.0	316.0	Tuff, as above.						

Date of Examination May 7<sup>th</sup>, 1981.

# DIAMOND DRILL RECORD

Hole No. C-81-3 Sheet No. 2

Property.....  
 Location.....  
 Latitude.....  
 Departure.....  
 Bearing.....

Dip

.....  
 .....  
 .....  
 .....  
 Total Footage.....

Elev. Collar.....  
 Datum.....  
 Date Started.....  
 Date Completed.....  
 Drilled by.....  
 Logged by.....

Footage		Formation	Sample Number	Sample Footage	Sample Width	Gold Sample	Gold Sludge	Remarks
From	To							
316.0	326.5	Diabase, as above.	296	326.5-330.0	3.5'			
326.5	338.5	Tuff, as before, but more silicification.	297	330.0-335.0	5.0'			
338.5	339.5	Diabase, as above.	298	335.0-338.5	3.5'			
339.5	377.0	Tuff, as above. Sulphides (pyrite) @	299	339.5-345.0	5.5'			
		349.0'-350.5' (≈ 10%), 354' (1-2%),	300	345.0-350.0	5.0'			
		361' (1-2%), 365' (1%), 368'-377' (1-2%).	301	350.0-355.0	5.0'			
			302	355.0-360.0	5.0'			
377.0	443.0	Diabase, as above.	303	360.0-365.0	5.0'			
443.0	450.0	Tuff, as above. Pyrite (1-2%).	304	365.0-370.0	5.0'			
		End-of-hole.	305	370.0-377.0	7.0'			
			306	443.0-450.0	7.0'			

Date of Examination.....

# DIAMOND DRILL RECORD

Hole No. C-81-4 Sheet No. 1

Property CARLSON OGDEN - 0-3 ACCT.  
 Location OGDEN TOWNSHIP  
CLAIM 499910 290 FEET EAST }  
 225 FEET SOUTH } # 4 POST.  
 Latitude 5+75 NORTH  
 Departure 20+90 EAST  
 Bearing 55° GRID NORTH

Dip  
-55° COLLAR  
-53° 325'  
 Total Footage 325' AQ WIRELINE.

Elev. Collar \_\_\_\_\_  
 Datum \_\_\_\_\_  
 Date Started MAY 4 1981  
 Date Completed MAY 7 1981  
 Drilled by DOMINIK DRILLING  
 Logged by J. CAMPBELL P. ENG.

Footage		Formation	Sample Number	Sample Footage	Sample Width	Gold Sample	Gold Sludge	Remarks
From	To							
0	180'	CASING						
180	291'	TALL CHLORITE CARBONATE ZONE LINEATION ANGLES AT 40° TO CORE AXIS. (DARK GREY TO GREY) MINOR OR LESS THAN 1% PY. FROM 212' TO 220'.  LOST CORE 1' @ 197', 2' @ 224 to 226, 2' @ 245-247, 6' @ 250-257						
291	325	ALTERED GRANODIORITE (GREY-LIGHT) MEDIUM GRAINED HOMOGENOUS FRACTURED SOME APPEARANCE TO CRUDE BANDING AT 60° TO CORE AXIS. CONTACT. 2% PYRITE 291-293 5% PYRITE AFTER 293	0307	291-293	2.0'	TR		
			0308	293-300	7.0'	TR		2 1/2' LOST CORE.
			0309	300-305	5.0'	TR		
			0310	305-310	5.0'	TR		
			0311	310-315	5.0'	TR		
			0312	315-320	5.0'	TR		
325		END OF HOLE	0313	320-325	5.0'	TR		
		CASING PULLED						

Date of Examination May 9 1981

*J. Campbell*

# DIAMOND DRILL RECORD

Hole No. C-81-5 Sheet No. 2

Property CARLSON OGDEN ACCT 0-3  
 Location OGDEN TOWNSHIP

Latitude \_\_\_\_\_  
 Departure \_\_\_\_\_  
 Bearing \_\_\_\_\_

Dip  
 \_\_\_\_\_  
 \_\_\_\_\_  
 \_\_\_\_\_  
 \_\_\_\_\_  
 \_\_\_\_\_  
 \_\_\_\_\_  
 Total Footage \_\_\_\_\_

Elev. Collar \_\_\_\_\_  
 Datum \_\_\_\_\_  
 Date Started \_\_\_\_\_  
 Date Completed \_\_\_\_\_  
 Drilled by \_\_\_\_\_  
 Logged by J. W. CAMPBELL

Footage		Formation	Sample Number	Sample Footage	Sample Width	Gold Sample	Gold Sludge	Remarks
From	To							
286	287	BARREN MASSIVE WHITE CARBONATE VEIN						
287	287 1/2	TALC CARBONATE CHLORITE AS ABOVE						
287 1/2	289	BARREN MASSIVE WHITE CARBONATE VEIN - WITH WHISPS OF CHLORITE						
289	325	TALC - CARBONATE CHLORITE ZONE AS ABOVE						
	325	END OF HOLE						
		CASING PULLED						

Date of Examination \_\_\_\_\_

*J. W. Campbell*

# DIAMOND DRILL RECORD

Hole No. C-81-5 Sheet No. 1

Property CARLSON OGDEN ACCT 0-3  
 Location OGDEN TOWNSHIP  
CLAIM 4-19-10 240 FEET EAST } #4 POST.  
225 FEET SOUTH }  
 Latitude 5+75 NORTH  
 Departure 20+40 EAST  
 Bearing 55° GRID NORTH

Dip  
 - 55° AT COLLAR  
 - 53° AT 325 FEET  
 Total Footage 325' AQ WIRELINE

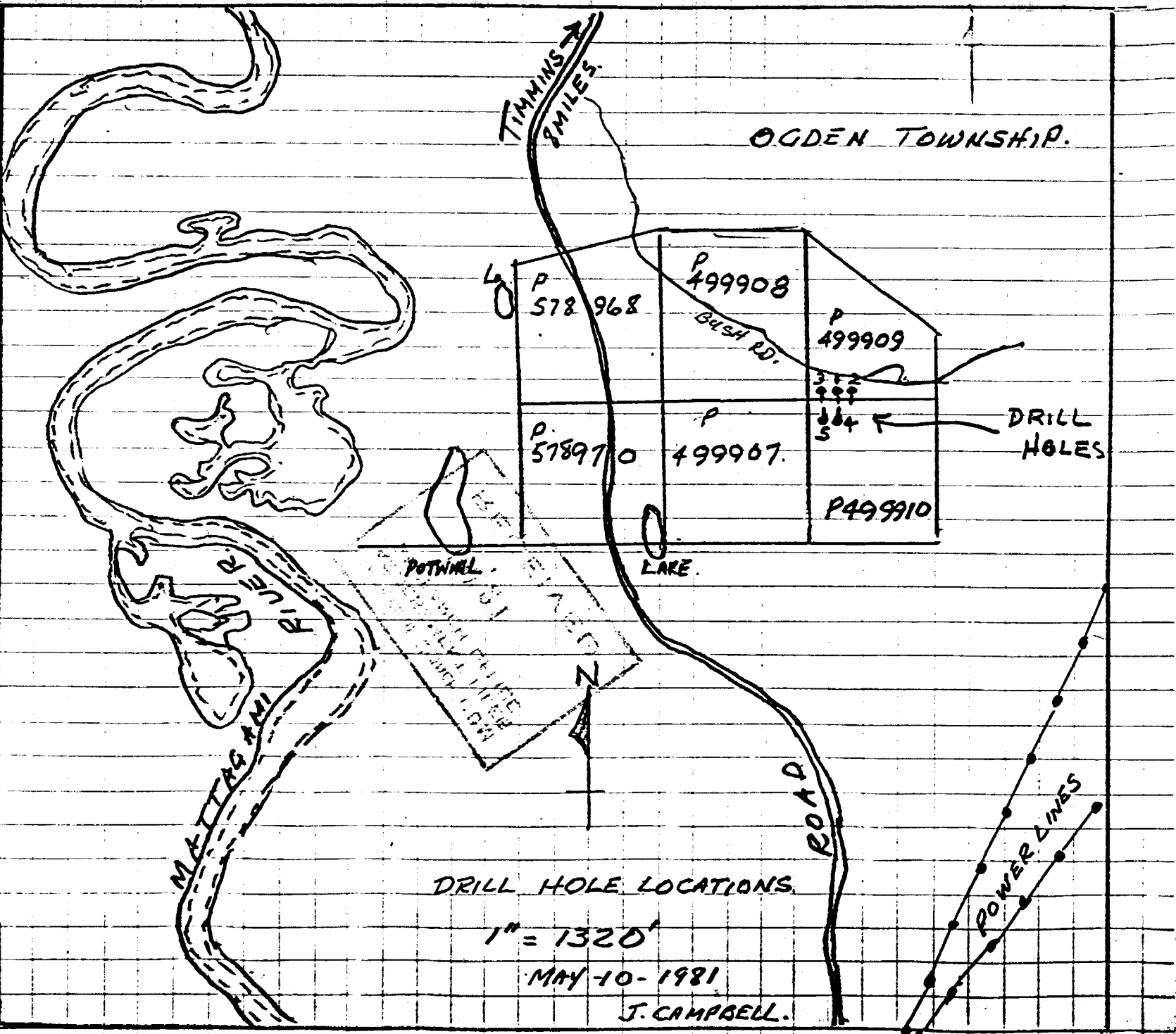
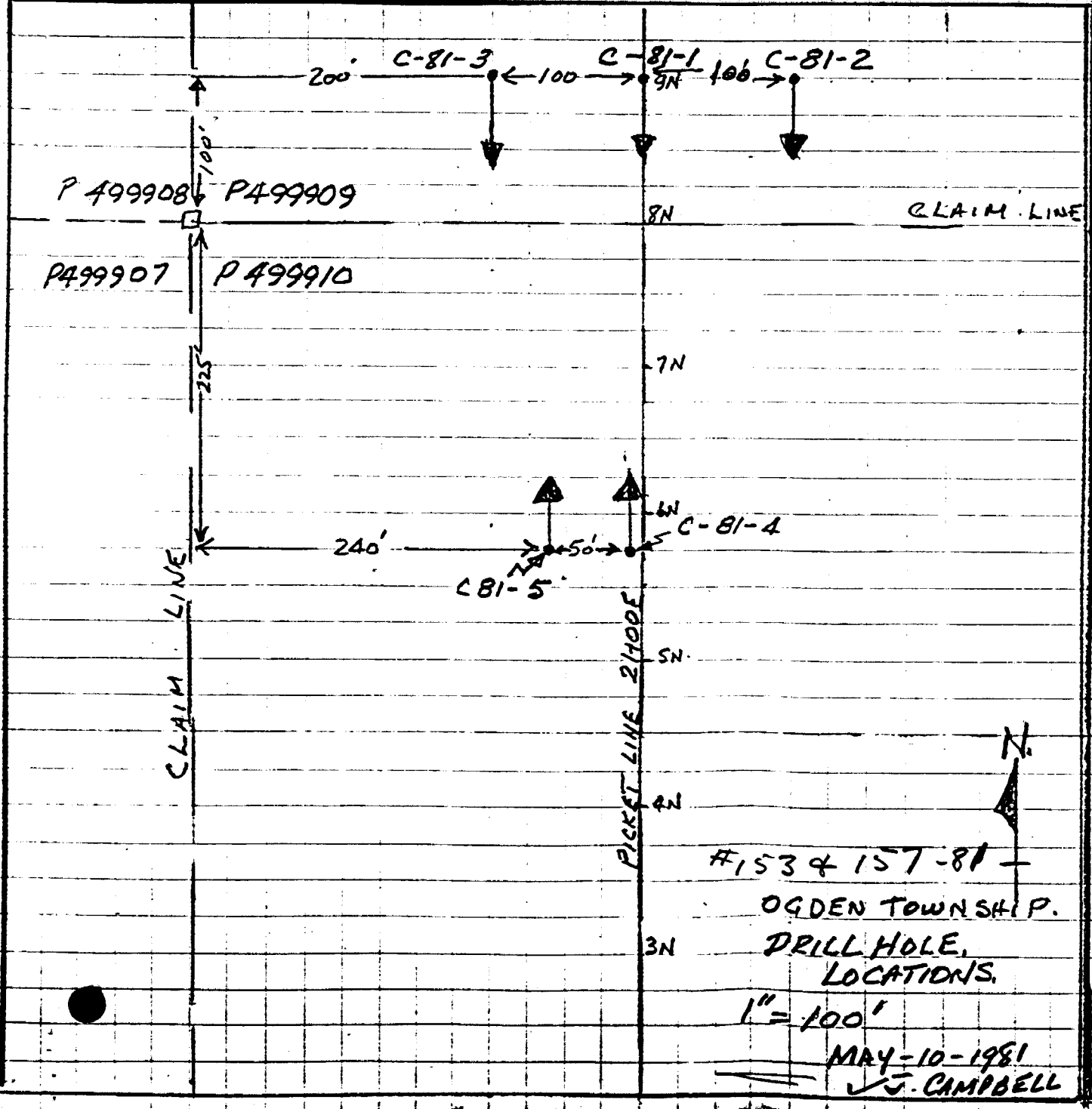
Elev. Collar \_\_\_\_\_  
 Datum \_\_\_\_\_  
 Date Started MAY 7 1981  
 Date Completed MAY 9 1981  
 Drilled by DOMINIK DRILLING  
 Logged by J. Campbell P.ENG

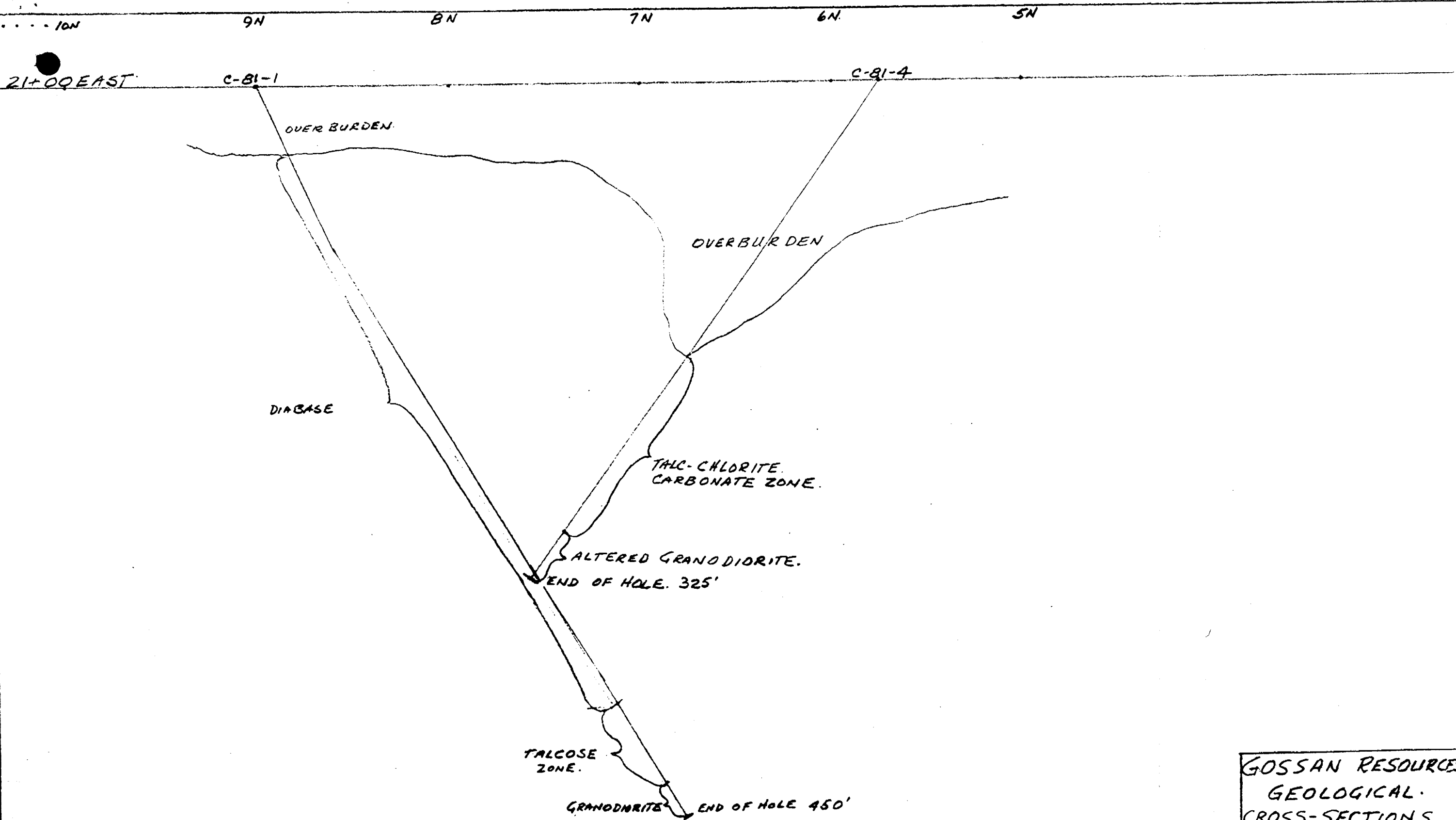
Footage		Formation	Sample Number	Sample Footage	Sample Width	Gold Sample	Gold Sludge	Remarks
From	To							
0	80'	CASING						
80	208'	TALC CHLORITE CARBONATE ZONE. POOR OR NO LINATION S 185.5-187. alt. granodiorite inclusion 2% F.g. PY.						
		LOST CORE 2' @ 85' 1' @ 97' 6' @ 107'						
		1' @ 113' 7' @ 127' 1' @ 132'	0314	208-215	7.0'			
		1' @ 147' 1' @ 157' 1' @ 167'	0315	215-220	5.0'			
		1' @ 177' 1' @ 182' 2' @ 190'						
		3' @ 207'	0316	220-225	5.0'			
208	265	ALTERED GRANODIORITE. LIGHT GREY FRACTURED NO LINATION. 5% FINE TO MEDIUM GRAINED PYRITE.	0317	225-230	5.0'			
			0318	230-235	5.0'			
265	267	CONTACT ZONE IN @ 35° 2% F.g. PYRITE.	0319	235-240	5.0'			
			0320	240-245	5.0'			
267	277	TALC CARBONATE CHLORITE ZONE. AS ABOVE 4' LOST CORE.	0321	245-250	5.0'			
			0322	250-255	5.0'			
			0323	255-260	5.0'			
277	286	DIABASE DARK GREEN FINEGRAINED HOMOGENOUS - NO PYRITE.	0324	260-265	5.0'			

Date of Examination MAY 10 1981

*J. Campbell*







GOSSAN RESOURCES  
 GEOLOGICAL  
 CROSS-SECTIONS  
 OGDEN TOWNSHIP  
 C-81-1  
 C-81-4  
 DRILL HOLES  
 LINE 21+00EAST  
 FACING EAST  
 SCALE 1"=50'  
 NOV. 1981 JWC.

C-81-2.

22+00 EAST P.L.

C-81-3

20+00 EAST P.L.

OVERBURDEN.

OVERBURDEN

FELSIC TO INTER-MEDIATE TUFF

FELSIC TUFF 10% PY

FELSIC TUFF 14% PY

FELSIC BRECCIA TR PY

TALCY CARBONATE ZONE.

GRANODIORITE 3% PYRITE

TALC CARBONATE TR PYRITE

E.O.H. 450'

TUFF

5%

10%

PYRITE

TUFF

DIABASE + TUFF

TUFF

DIABASE

TUFF

450' E.O.H.

GOSSAN RESOURCES  
CROSS SECTION  
C-81-2  
OGDEN TOWNSHIP.  
DRILLED MAY 1981.

GOSSAN RESOURCES  
CROSS SECTION.  
C-81-3  
OGDEN TOWNSHIP  
ONTARIO  
DRILLED MAY 1981

J. CAMPBELL

J. CAMPBELL.