



42A06NW0238 63.1415 OGDEN

010

The President and Directors,
Globe Exploration & Mining Co. Ltd.,
Room 403,
62 Richmond Street West,
Toronto, 1, Ontario.

Gentlemen:

This report describes a program of geophysical survey carried out on your 8-claim property, located in Ogden Township, Porcupine Mining Division, Ontario. The property is known as "Block No. 19", and the survey was carried out in December, 1964, and January, 1965. The results are depicted on the plan accompanying this report, plotted to a scale of 1 Inch = 200 Feet.

PROPERTY, LOCATION AND ACCESS -

Block No. 19 is comprised of the following eight (8) contiguous claims:

P-59726 to P-59728, inclusive;

P-57654 to P-57658, inclusive.

This block of claims is located at the northeast part of Ogden Township, about 1.5 miles from the Town of Timmins.

Access from Timmins can be readily had by Kenilworth Mines Road to the Township Line between Mountjoy and Ogden Townships. There is a road which runs along this township line and the north boundary

of this claim group is on this township line.

TOPOGRAPHY AND GEOLOGY -

Topography as noted by the geophysical operators, is marked on the plan accompanying this report. The operators also came across four old trenches on the property. One of the trenches, located in Claim P-57658, is accessible by a bush road from the above-said township line. This accessibility indicates that there was considerable work done on that particular trench. Old maps showed a shaft at the northwest corner of Old Claim 7137, now P-57658. It follows that this particular accessible trench is probably part of, or near, the said shaft. The geophysical operators observed no outcrop areas on the property, however, old maps indicate the occurrence of two small outcrop areas of sediments. The aeromagnetic indication is negative.

SURVEY DATA -

The geophysical survey was carried out along picket lines cut at 400-ft. intervals, north-south, to cover the property area. A total of 7.78 miles of lines was cut for the geophysical survey.

A total of 6.87 miles of magnetometer survey was carried out, with readings taken at 100-ft. intervals along the picket lines.

The readings were tied on to the official control station, located at about 8 miles west of Timmins, along Highway 101.

The electromagnetic survey was carried out by using a Ronka Mark IV Unit, with a 300-ft. cable, and a total of 8.87 miles of electromagnetic survey was carried out.

SURVEY RESULTS -

The magnetometer survey encountered no anomalous conditions on the property. Weak indications of structure, as indicated by the magnetic contours, are not considered indicative.

The electromagnetic survey also encountered no definite anomalous conditions. However, at Line 20 W., 1700 + 00 S., the electromagnetic survey encountered a marginal conductor which appears to be striking toward the area of the shaft. If there is interesting mineralization noted at the shaft area, this weak or marginal conductor would be the choice target for exploration diamond drilling.

CONCLUSIONS AND RECOMMENDATIONS -

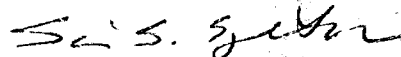
The geophysical survey results are inconclusive. However, the electromagnetic survey has come across a marginal-to-weak conductor at the vicinity of the old shaft located at the central part of the property.

4.

I recommend to check this shaft and the other old trenches on the property in the coming field season, to further evaluate the electromagnetic indication for possible exploration diamond drilling.

Respectfully submitted,

CANA EXPLORATION CONSULTANTS LIMITED

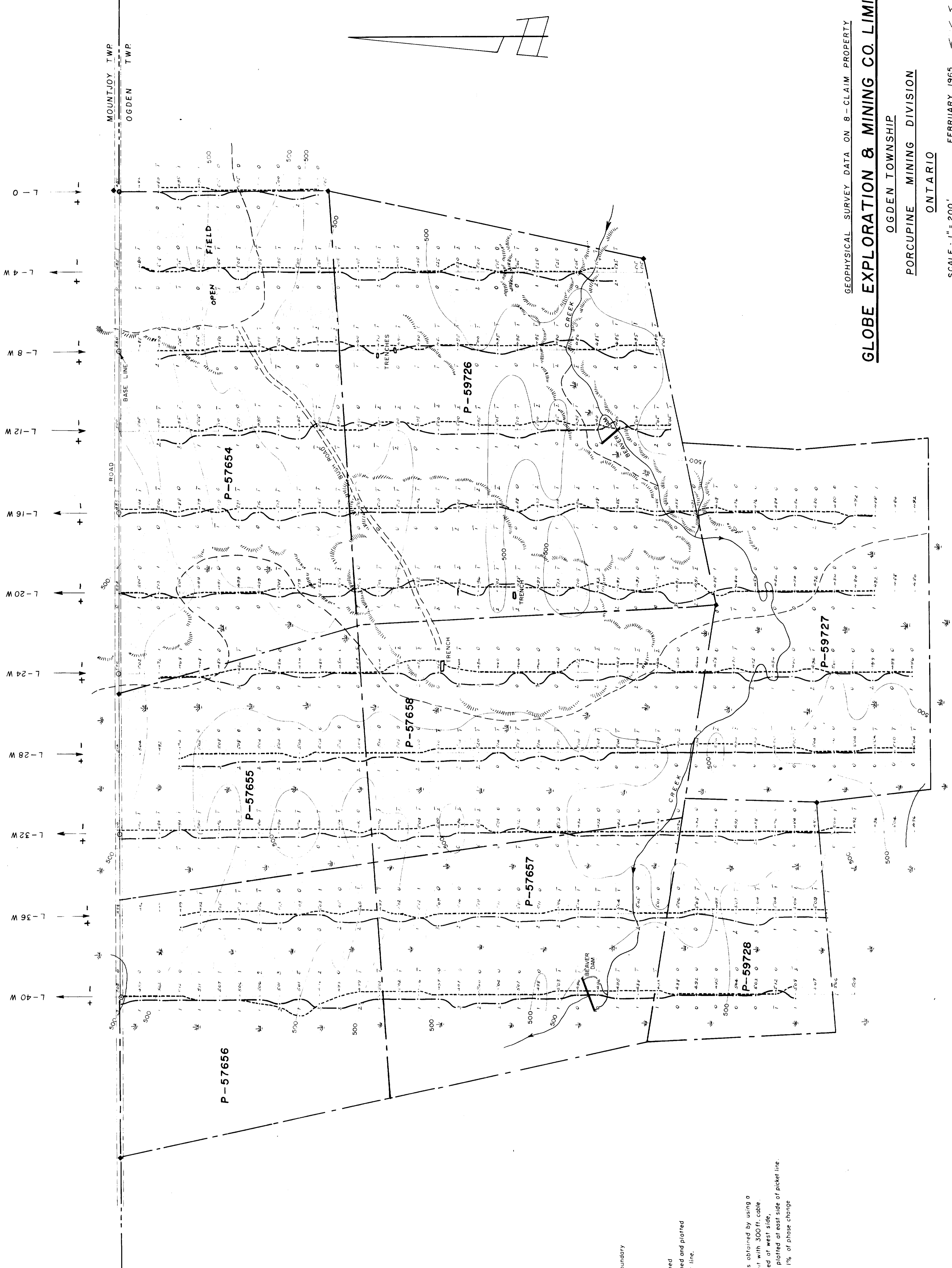
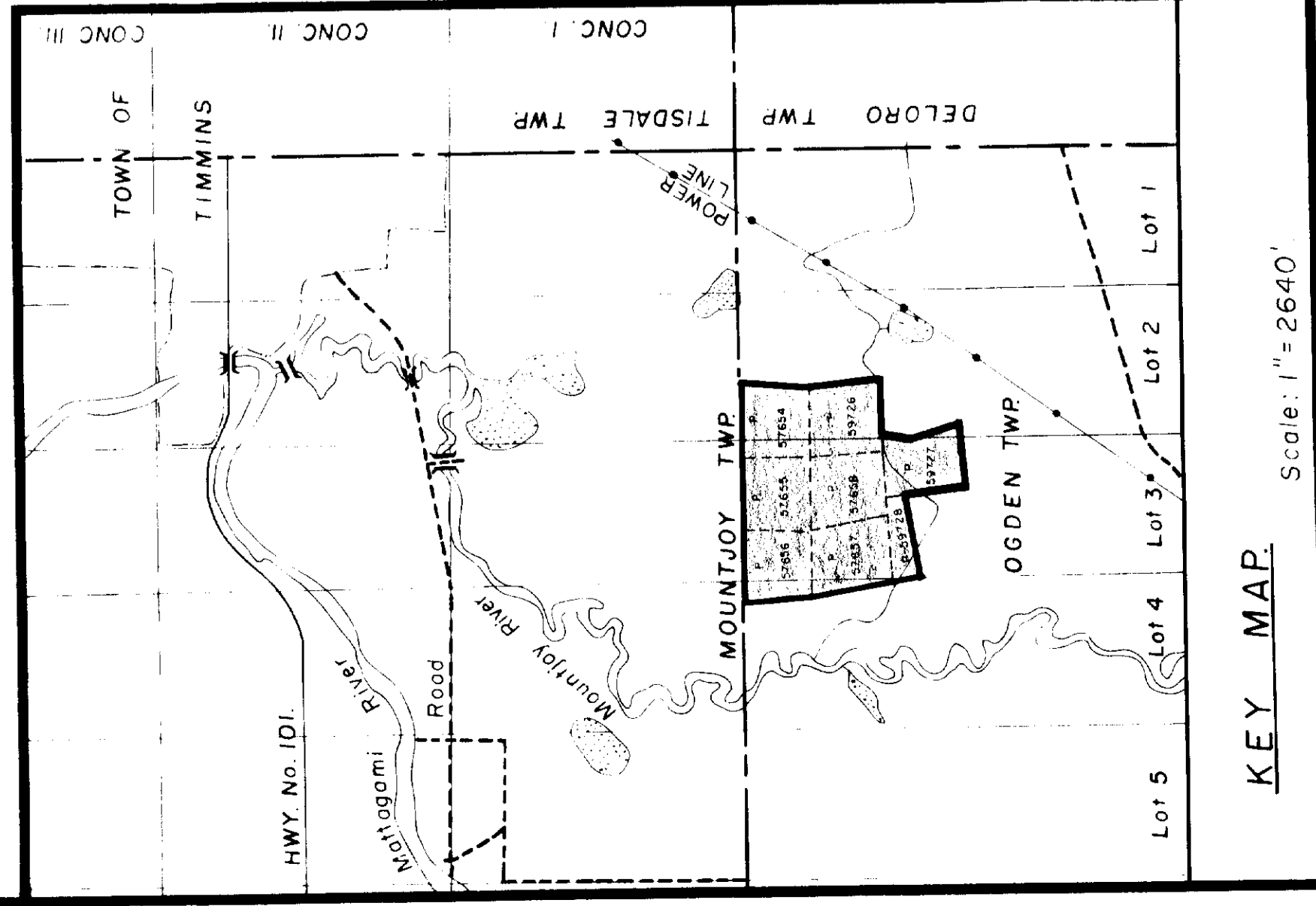


S. S. Szetu, Ph. D.,
Consulting Geologist.

SSS:rw
Encl.

Toronto, Ontario,

February 11th, 1965.



LEGEND

- Claim post and claim boundary
- Higher ground
- Swamp
- Magnetic control station
- Picket line cut and chained
- Magnetic readings obtained and plotted to the east side of picket line.
- Magnetic contour.
- Below 500 gammas
- Above 500 gammas
- Electromagnetic readings obtained by using a RONKA MARK - IV unit with 300 ft. cable
- In-phase readings plotted at west side, out-of-phase readings plotted at east side of picket line.
- Scale of profile 1/10" = 1% of phase change
- Direction of traverse

GLOBE EXPLORING & MINING CO. LIMITED

OGDEN TOWNSHIP
PORCUPINE MINING DIVISION
ONTARIO

GEOLOGICAL SURVEY DATA ON 8-CLAIM PROPERTY

SCALE: 1" = 200'
FEBRUARY, 1965. S. S. J. J.

CANA EXPLORATION CONSULTANTS LIMITED.

