


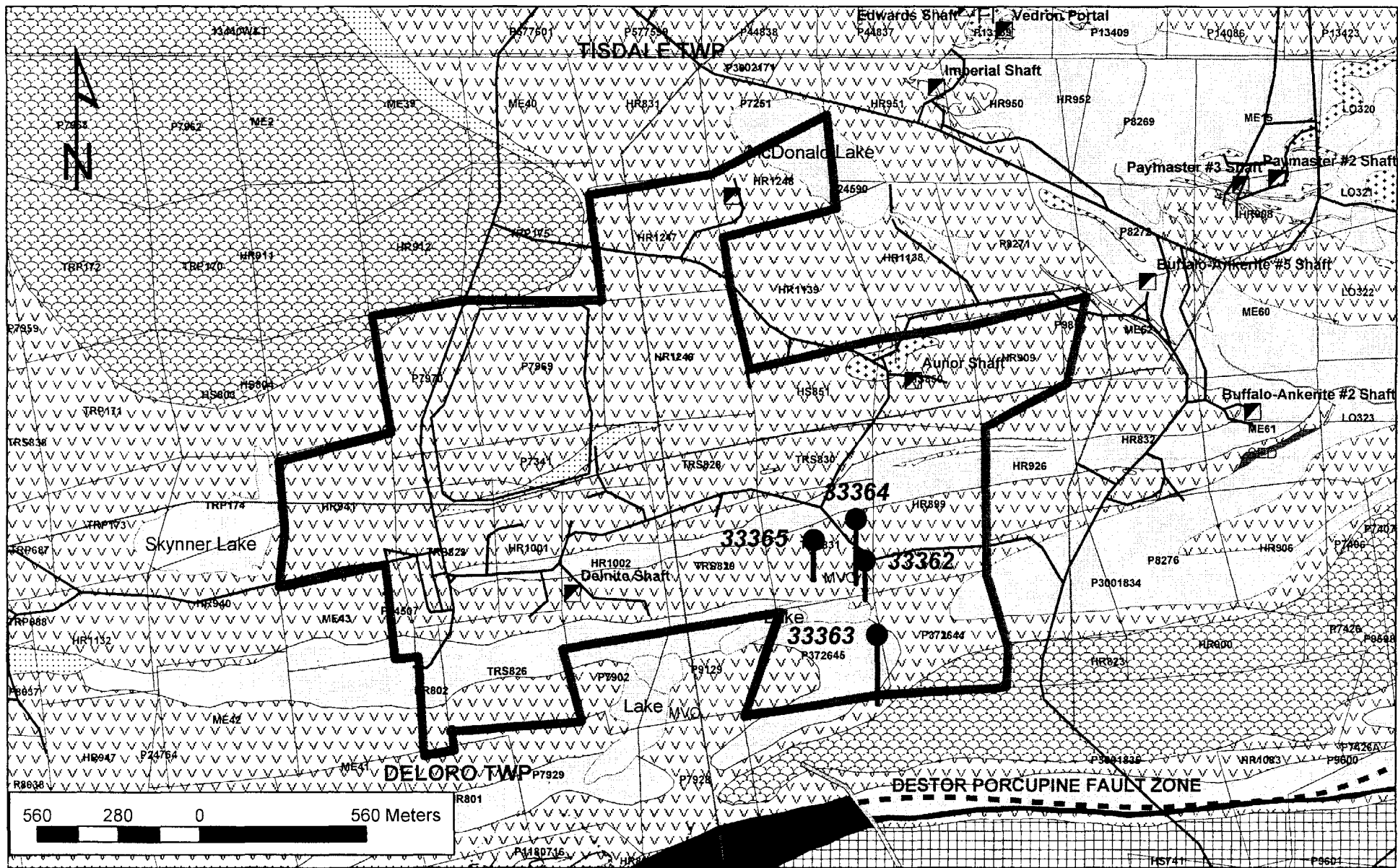
34630





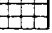
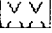

	Placer Dome (CLA) Limited	
	Drawn by: DBS	Porcupine Joint Venture Aunor/Delnite Project Property Location Map Figure 1
	Date: 11/14/2002	
	Scale:	
Location: Timmins, ON		



42A06NW2033 2.24620 DELORO

010



-  Felsic Intrusive
-  Chemical Sediment
-  Sediment
-  Rhyolite Volcanic
-  Intermediate Volcanic
-  Mafic Volcanic
-  Ultramafic Volcanic



Placer Dome (CLA) Limited

Drawn by: DBS
 Date: 11/14/2002
 Scale:
 Location: Timmins, ON

Porcupine Joint Venture
 Aunor/Delnite Project
 Property Geology Map
 Figure 2

GEOLOGICAL LEGEND – LOGGING CODES

ROCK TYPE

AK	ANKERITE
CB	CARB ROCK
CON	CONGLOMERATE
DIA	DIABASE
FG	FLOWY GREENSTONE
FV	FELSIC VOLCANIC
FZ	FAULT ZONE
GRA	GRAPHITE
GWK	GREYWACKE
HA	HIGHLY ALTERED
IF	IRON FORMATION
KRF	KRIST FRAGMENTAL
POR	PORPHYRY
QZ	QUARTZ VEIN
S/G	SLATE/GREYWACKE
SLT	SLATE
TAL	TALC ROCK
UG	UNIFORM GREENSTONE
UM	ULTRAMAFIC

MINERAL

AG	SILVER
AK	ANKERITE
AS	ARSENOPYRITE
AU	GOLD
BI	BIOTITE
CA	CALCITE
CP	CHALCOPYRITE
EP	EPIDOTE
FU	FUCHSITE
GA	GALENA
HE	HEMATITE
MT	MAGNETITE
PO	PYRRHOTITE
PY	PYRITE
QZ	QUARTZ
SD	SIDERITE
SE	SERICITE
SP	SPHALERITE
TO	TOURMALINE

ALTERATION

AB	ALBITE
AK	ANKERITE
BI	BIOTITE
CA	CALCITE
CL	CHLORITE
SE	SERICITE
SI	SILICIFIED
TC	TALCOSE

VEINING

AK	ANKERITE
CA	CALCITE
PY	PYRITE
QZ	QUARTZ
QZ-AK	QUARTZ-ANKERITE
QZ-CA	QUARTZ-CALCITE
QZ-FU	QUARTZ-FUCHSITE
QZ-TO	QUARTZ-TOURMALINE

Kinross Gold Corporation

Hole #	Easting	Northing	Elevation	Length	Date	Test	Core Size	Logged By	U/S	Target	Location \ Comments:
33362	479025	5364514		309.7	8/5/02	EZ Shot	NQ	S. Harding	S		Aunor

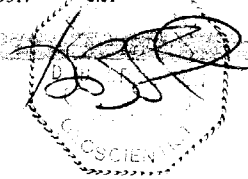
DISTANCE	AZIMUTH	DIP	POSITION X	POSITION Y	POSITION Z	REMARKS
0.00	170	-45				
14.02	171.6	-44.4				
29.26	171.5	-44.2				
47.55	171.1	-44.2				
78.03	172.3	-43.9				
123.75	173.2	-43.4				
169.47	175.4	-43.6				
215.19	173.3	-43.3				
306.63	174.4	-42.6				

FROM	TO	ROCK-TYPE	C.A.	RQD	REMARKS	FROM	TO	WIDTH	SAMPLE #	AU G/T	Arsenic	% Qtz	% Py	% Aspy	Remarks
0.00	4.30	OVB				0.00	4.30	4.30							OVB
4.30	10.40	FG,CL	70	65	dacite, grey/green, wkly pillowed, wk cl/se alt'n, mn ca strgrs, tr qz-ca strgrs	4.30	119.70	115.40							
						119.70	120.70	1.00	C9301	0.00		0	0		
10.40	17.60	FG,SE	70	0	dacite, blocky w/ sections of broken core, mn rusty fracs, loc gouge on fracs	120.70	121.00	0.30	C9302	3.34		50	1		qcs, cp/pe
						121.00	122.00	1.00	C9303	0.20		6	0		
17.60	43.10	FG,SE,CL	70	85	dacite, lt grey/green, pillowed, loc mn vars, wk se/cl, tr qz-ca strgrs, WR E192412 @ 41.1m	122.00	123.00	1.00	C9304	0.03		20	0		qz/ca flood
						123.00	124.00	1.00	C9305	0.01		20	0		qz/ca flood
43.10	66.90	UG,CL	60	85	iron tholeiite, grey/green-green, massive, loc wk-mod cl, mn se, mod-str lx, tr qz-ca strgrs, E192413 @ 52m	124.00	125.20	1.20	C9306	0.01		25	0		qz/ca flood
						125.20	126.50	1.30	C9307	0.20		25	0		qz/ca flood
66.90	94.00	FG,CL,SE	70	90	dacite, grey/green, wkly pillowed, wk cl, mn sc, loc mn perv ca alt'n, 1% qz-ca strgrs/flooding	126.50	127.50	1.00	C9308	0.31		2	0		
						127.50	193.20	65.70							
94.00	120.70	FG,CL	70	95	dacite, green-grey/green, pillowed w/ loc mn vars, wk-mod cl, loc mn ca, tr qz-ca strgrs, E192414 @ 110.7m	193.20	194.20	1.00	C9309	0.01		25	0		qz veinin
						194.20	195.00	0.80	C9310	0.02		12	0		qz-ak strg
120.70	126.50	FG,CL,CA	70	95	green-grey/green, wk-mod cl, 20% ca-mn qz flooding, 8cm qz-ca strgr w/ cp/po @ 126.8m	195.00	195.70	0.70	C9311	0.00		98	0		QV, ak
						195.70	196.70	1.00	C9312	0.01		20	0		qz-ak strg
126.50	129.40	FG,CL	70	100	green, wk-mod cl, pillowed, tr-1% ca strgrs	196.70	197.70	1.00	C9313	0.01		30	0		qz-ak strg
						197.70	199.00	1.30	C9314	0.00		30	0		QV, strgr
129.40	148.00	UM,CL	70	95	dk grey/green, wk-mod cl, mn tc, loc mn perv ca, wk ca stwk/cl fracs, predom massive, tr qz-ca strgrs	199.00	199.90	0.90	C9315	0.01		95	0		QV, ak
						199.90	200.80	0.90	C9316	0.01		98	0		QV, ak
148.00	182.00	UM,CL,TC	70	95	dk grey/green, wk cl/tc, tc increases downhole, wk-mod bx, cl stwk w/ wk ca, tr qz-ca strgrs/ca strgrs	200.80	201.80	1.00	C9317	0.01		5	0		

6 November 2002

Hole #: 33362

Page 1 of 2



FROM	TO	ROCK-TYPE	C.A.	RQD	REMARKS	FROM	TO	WIDTH	SAMPLE #	AU G/T	Arsenic	% Qtz	% Py	% Aspy	Remarks
182.00	192.00	UM,CL	70	90	dk grey/green,wk cl,mn tc,2-3% qz/qz-ak strgrs < 2cm wide,182-185m: mn sm flts	201.80	202.80	1.00	C9318	0.01		4	0		
						202.80	203.80	1.00	C9319	0.03		30	0		qz-ak veini
192.00	195.00	CB,CL,QZ	60	90	dk green-grey/green,wk-mod cl,wk ak,12% qz/qz-ak strgrs/veining,msv wh qz w/ cl incl/frags	203.80	204.80	1.00	C9320	0.01		25	0		qz-ak veini
						204.80	219.60	14.80							
195.00	195.70	QZ,AK	60	100	wkly bx wh QV w/ wk ak,20% ch/cb frags	219.60	220.60	1.00	C9321	0.02		5	0		
195.70	199.00	CB,CL,QZ	60	95	green-grey/green,wk cl,increase in ak,25% qz/qz-ak veining/strgrs	220.60	221.40	0.80	C9322	0.06		15	3		qz-ak strg
						221.40	222.40	1.00	C9323	0.01		25	0		qz-ak veini
199.00	200.80	QZ,AK	35	90	wkly bx-msv wh QV,wk ak,25% ch/cb frags,tr py	222.40	223.40	1.00	C9324	0.01		30	0		qz-ak veini
200.80	220.60	CB	60	100	grey/green,tr-wk cl,mod ak,mn se,fol w/ mn cren,5% qz/qz-ak veining/strgrs	223.40	309.70	86.30							EOH.
220.60	221.40	CB,SE,PY	60	100	grey,wk-mod se,mod ak,15% qz-ak strgrs,3% fg diss py										
221.40	234.80	CB	60	100	grey/green,wk se/cl,mod ak,contorted/cren fol,8-10% qz-ak strgrs/veining										
234.80	240.00	CB,CL	60	95	dk grey/green,wk-mod cl.mod cb,3% qz-ak strgrs										
240.00	254.80	UM,TC	60	80	grey-grey/green,wk-mod tc,tr-wk cl,wk ca stwk,tr qz-ca strgrs										
254.80	257.80	UM	60	60	dk grey/green-almost black,more massive,mn stwk,more strongly magnetic										
257.80	263.70	UM,TC	60	70	grey-grey/green,mod tc,mn cl,wk ca stwk,tr qz-ca strgrs										
263.70	269.90	UM	65	95	dk grey/green-almost black,massive w/ mn ca stwk,slightly more magnetic,contacts at 65 deg tca										
269.90	282.00	UM,TC	60	90	grey-wk-mod tc,loc mn cl,wk ca stwk,tr qz-ca strgrs										
282.00	309.70	UM,CL	50	95	grey/green,wk-mod cl,mn tc,loc mn perv ca,mod stwk,tr qz-ca strgrs,EOH.										

Kinross Gold Corporation

Hole #	Easting	Northing	Elevation	Length	Date	Test	Core Size	Logged By	U/S	Target	Location \ Comments:
33363	479068.01	5364267.8		330.3	8/12/02	EZ Shot	NQ	S. Harding	S		Aunor

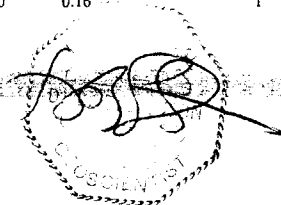
DISTANCE	AZIMUTH	DIP	POSITION X	POSITION Y	POSITION Z	REMARKS
0.00	170	-45				
14.02	169.2	-45.7				
62.00	167.6	-46.1				
108.51	172.7	-46.1				
154.00	171.6	-46.2				
199.95	172.5	-45.4				
251.00	171.3	-44.9				
300.00	173	-44.4				
330.00	172	-43.4				

FROM	TO	ROCK-TYPE	C.A.	RQD	REMARKS	FROM	TO	WIDTH	SAMPLE #	AU G/T	Arsenic	% Qtz	% Py	% Aspy	Remarks
0.00	4.40	OVB				0.00	4.40	4.40							OVB
4.40	11.00	FG,AK	70	95	grey/green-green,wkly pil,tr-wk ak,loc tr fuch w/ strgrs,3% qz-ca strgrs,tr-1% py	4.40	144.30	139.90							
11.00	29.10	FG,CI	70	100	green,pil w/ mn amygs,tr-wk perv ca,tr qz-ca/ca strgrs,tr-1% py,WR E192415 @ 14.7m	144.30	145.30	1.00	C9325	0.00					
29.10	39.90	UG,CL	60	90	iron tholeiite,green,massive,tr-wk perv ca,mod-str lx,tr-1% qz-ca strgrs	145.30	146.00	0.70	C9326	0.00		80			qz veinin
39.90	44.60	FG,UG,CL	60	95	55% UG,massive iron tholeiite,45% FG,pillowed basalt,2-3% ca strgrs,cnts at 70 deg tca	146.00	147.00	1.00	C9327	0.00		3	0		qz strgrs
44.60	62.30	FG,CL,CA	60	95	dk green,wkly pillowed-massive,loc wk-mod perv ca,mn ca strgrs,WR E192416 @ 57.7m	147.00	193.70	46.70							
62.30	65.80	UG,CL,CA	70	100	green,massive,wk perv ca,WR E192417 @ 63.7m	193.70	194.70	1.00	C9328	0.59		3	4		porph
65.80	84.00	FG,CL,CA	60	95	green,wkly pil/fof,loc wk-mod ca,tr-1% pink/wh-wh qz-ca strgrs,1-2% ca strgrs	194.70	195.70	1.00	C9329	0.09		3	2		porph
84.00	99.00	FG,CL,CA	50	100	wk-mod fol increasing down hole,cren/mn folding in lower half,2% py/tr cpy in end 1.5m,E192418 @ 91m	195.70	196.60	0.90	C9330	0.25		2	3		porph
99.00	104.00	CB,CL,QZ	50	95	grey/green,wk cl,mn se,10% qz-ak veining,grad lower cnt	196.60	197.90	1.30	C9331	0.16		2	3		
104.00	112.50	UM,TC,CL	40	90	grey-grey/green,wk cl/tc,tr qz-ak strgrs	197.90	198.70	0.80	C9332	0.09		3	4		porph
112.50	114.30	FZ		0	blocky/broken core,mn gouge,approx 30% lost core	198.70	200.00	1.30	C9333	0.07		2	5		
114.30	129.80	UM,TC,CL	40	80	grey-grey/green,wk cl,wk-mod tc,tr qz-ca strgrs	200.00	201.30	1.30	C9334	0.05		5	3		porph
						201.30	202.60	1.30	C9335	0.03		3	2		porph/mal
						202.60	203.60	1.00	C9336	0.04		3	3		porph
						203.60	204.10	0.50	C9337	0.01		0	1		
						204.10	205.20	1.10	C9338	0.20		4	4		porph
						205.20	206.00	0.80	C9339	0.83		3	5		
						206.00	207.00	1.00	C9340	0.16		1	2		
						207.00	263.60	56.60							

6 November 2002

Hole #: 33363

Page 1 of 4



FROM	TO	ROCK-TYPE	C.A.	RQD	REMARKS	FROM	TO	WIDTH	SAMPLE #	AU G/T	Arsenic	% Qtz	% Py	% Aspy	Remarks
129.80	130.10	FZ		0	gouge/broken core	263.60	264.60	1.00	C9341	0.07		8	0		porph
130.10	141.90	UM,TC,CL	40	90	grey/green,wk cl/tc	264.60	265.60	1.00	C9342	0.03		7	0		porph
141.90	142.40	FZ		0	blocky/broken core,30% gouge	265.60	266.60	1.00	C9343	0.22		3	1		porph
142.40	145.30	UM,TC,CL	40	95	grey/green,wk cl/tc,wk ak at end	266.60	267.60	1.00	C9344	0.10		3	0		porph
145.30	146.00	QZ	30	100	bx qz veining w/ mn ak/se	267.60	268.60	1.00	C9345	0.13		2	0		porph
146.00	182.00	CB	40	95	grey/green,wk se,cl fracs,mn polysuturing,loc cg ak,2-3% irr qz/qz-ak strgrs	268.60	269.60	1.00	C9346	0.04		5	0		porph
						270.60	304.60	34.00							
182.00	189.40	UM,CL,TC	40	95	grey/green,wk cl/tc,grad upper cnt	269.60	270.60	1.00	C9347	0.06		5	1		porph
189.40	189.80	FZ	50	0	blocky core,10% gouge at cnts	304.60	305.60	1.00	C9348	0.14		5	1		porph
189.80	190.30	UM,CL,TC	40	90	grey/green-grey,wk cl/tc	305.60	306.60	1.00	C9349	0.10		6	1		porph
190.30	191.20	UG,HE,AK	50	100	reddish grey/green,wk he/ak,1-2% qz-ak strgrs,2% py,top cnt 70 deg,lower cnt 45 deg tca	306.60	307.70	1.10	C9350	0.13		6	1		porph
191.20	193.10	POR	45	95	reddish grey/green,wk he/ak,1-2% qz-ak strgrs,2% py,top cnt 70 deg,lower cnt 45 deg tca	307.70	308.40	0.70	C9351	0.02		4	3		porph
						308.40	309.30	0.90	C9352	0.10		6	1		EOH.
193.10	193.70	UG	50	60	grey-grey/green,wk cl/lx/he,2% qz strgrs,5% py,lower cnt 55 deg tca	309.30	330.30	21.00							
193.70	196.60	POR	50	95	reddish pink/grey,loc mn se,3% qz strgrs < 4cm wide loc w/ cl/py,3% py,lower cnt 30 deg tca										
196.60	197.90	UG,CL,HE	65	90	iron tholeiite,reddish grey/green,wk cl,tr-wk he,mod lx,2% qz strgrs,3% py										
197.90	198.70	POR	55	100	reddish pink,loc mn se,3% qz strgrs,4% py										
198.70	200.00	UG,CL,HE	55	100	iron tholeiite,massive,tr-wk hem,mod-str lx,2% tiny qz strgrs,5% py										
200.00	203.60	POR	50	95	reddish pink,loc mn se,4% qz strgrs,3% py,201.3-201.6: mafic volc										
203.60	204.10	UG	60	100	grey/green-green,wk-mod cl,wk ak,mod lx,massive,tr-1% py										
204.10	205.20	POR	55	100	pink/grey,loc wk se,4% qz strgrs,4% py										
205.20	209.40	UG,HE,AK	55	90	pink/grey/green,tr-wk hem,wk ak/lx,loc wk cl,massive/wkly fol,2% qz/qz-ak strgrs,1-2% py										

FROM	TO	ROCK-TYPE	C.A.	RQD	REMARKS	FROM	TO	WIDTH	SAMPLE #	AU G/T	Arsenic	% Qtz	% Py	% Aspy	Remarks
209.40	218.60	FG,HE,AK	50	85	iron tholeiite,reddish grey/green,wk he/ak/cl,loc wk lx,pillowed?,1-2% qz-ak strgrs,2% py										
218.60	231.90	UG,HE,SE	50	90	iron thol,red/grey,msv,tr-wk he/se,mod lx,1% qz/qz-ca strgrs,1% py,5cm porph @ 229m,E192419 @ 224.9m										
231.90	232.50	POR,SE	40	100	reddish grey/green,wk se/he,cl cnts at 40 deg tca,4% qz strgrs,tr py										
232.50	233.90	UM,TC	40	80	dk grey/green,wk-mod tc,wk cl										
233.90	245.20	UG,HE	35	50	redd-reddish/grey,loc wk-mod he,wk lx,massive mn u.mafic frags in top 2m,tr qz strgrs/py										
245.20	245.90	UM,CL,TC	25	100	green-grey/green,wk cl/tc,cnts at 25 deg tca										
245.90	246.60	UG,HE	30	30	blocky,red-red/green,mod he,wk cl at margins										
246.60	249.20	UM,CL,TC	30	90	green-grey/green,wk-mod cl,mn ca,loc spinifex,10% mafic frags										
249.20	253.30	UG,HE	30	60	red/grey,mod he,loc tr-wk cl,tr qz-ca strgrs,251.6-252.1: u.mafic										
253.30	256.40	UM,CL,TC	30	95	grey/green,wk-mod cl,wk tc										
256.40	260.10	UG,HE	30	70	red-red/green,wk-mod he,loc mn cl,massive,tr qz-ca strgrs,tr-1% py										
260.10	263.60	UM,CL	20	80	wk-mod cl,mn tc,mn ak at end,261-261.5: mafics										
263.60	280.70	POR	40	95	pink/grey/green,loc tr-wk se,wk cl frags,3% qz strgrs,tr-1% py,top cnt 20 deg,lower cnt 50 deg tca										
280.70	304.60	UM,TC,CL	25	95	dk grey-grey/green,wk-mod tc,wk cl,wk polysuturing/fof,20cm porph frag at end										
304.60	307.70	POR	40	80	pink/grey,loc wk se,6% qz strgrs loc w/ py,1% py										
307.70	308.40	UG,SE	60	70	grey-grey/green,wk se,4% qz strgrs,3% py										
308.40	309.30	POR	40	100	pink/grey,mn se,6% qz strgrs,1% py										
309.30	311.30	UM,CL,CA	50	90	dk grey/green,mod cl,tr-wk tc,wk ca										
311.30	313.40	UG,HE,CA	50	90	reddish grey/green,tr-wk hem/ca,loc mn cl,1% qz strgrs,1-2% py,WR E192420 @ 312.9m										
313.40	316.50	UM,CL,CA	50	80	wk-mod cl/ca										
316.50	330.30	POR	60	95	grey,qz/feld porph,tr qz-ca strgrs,tr py,EOH.										

FROM	TO	ROCK-TYPE	C.A.	RQD	REMARKS	FROM	TO	WIDTH	SAMPLE #	AU G/T	Arsenic	% Qtz	% Py	% Aspy	Remarks
------	----	-----------	------	-----	---------	------	----	-------	----------	--------	---------	-------	------	--------	---------

6 November 2002

Hole # : 33363

Page 4 of 4

Kinross Gold Corporation

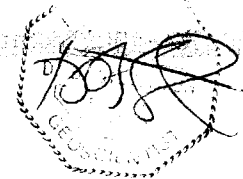
Hole #	Easting	Northing	Elevation	Length	Date	Test	Core Size	Logged By	U/S	Target	Location Comments:
33364	478998	5364662		184.7	8/15/02	EZ Shot	NQ	S. Harding	S		Aunor

DISTANCE	AZIMUTH	DIP	POSITION X	POSITION Y	POSITION Z	REMARKS
0.00	170	-45				
17.00	166.8	-44.5				
68.00	168.7	-44.7				
120.00	169.2	-43.9				

FROM	TO	ROCK-TYPE	C.A.	RQD	REMARKS	FROM	TO	WIDTH	SAMPLE #	AU/GT	Arsenic	% Qtz	% Py	% Aspy	Remarks
0.00	7.10	OVB				0.00	7.10	7.10							OVB
7.10	7.65	FG,AK	80	0	basalt, grey/green, wk ak/se, wkly pillowed, WR E192421 @ 7.2m	7.10	12.90	5.80							
						12.90	13.90	1.00	C9353	0.00		0	0		
7.65	13.90	CB	75	40	grey/green, wk se, wk-mod ak, 1-2% qz-ak strgrs, loc mn rust along fracs	13.90	15.20	1.30	C9354	0.00		95			QV
						15.20	16.20	1.00	C9355	0.01			0		
13.90	15.20	QZ	20	90	msv wh QV, wk-mod ak, tr se incl, tr cp, upper cnt 10 deg, lower cnt 30 deg tca	16.20	30.40	14.20							
						30.40	31.40	1.00	C9356	0.02		5	0		strgrs
15.20	21.30	CB	75	95	grey/green, wk se, mn cl, tr qz-ak strgrs, lower cnt 80 deg tca	31.40	32.30	0.90	C9357	0.01		95			QV
21.30	29.60	FG,CL	75	75	basalt, green, loc mn ca, pillowed, 1-2% qz-ca strgrs, loc tr py	32.30	32.90	0.60	C9358	0.00		1	0		
29.60	31.40	UM,CL,AK	75	90	grey/green, wk-mod cl, tr-wk tc in lower half, wk ak, 2-3% qz-ak strgrs	32.90	33.90	1.00	C9359	0.00		2	0		
						33.90	37.60	3.70							
31.40	32.30	QZ	60	60	msv-wkly bx wh QV, wk ak, cl/u. mafic frags at margins	37.60	38.60	1.00	C9360	0.01		3	0		
32.30	32.90	UM,CL,AK	70	90	grey/green, wk cl/ak, mn tc, tr qz-ak strgrs	38.60	39.30	0.70	C9361	0.02		20	0		qcs, tourr
32.90	38.00	FG,CL	65	90	green, msv-wkly pil, loc mn ca, 1-2% qz-ca strgrs	39.30	40.30	1.00	C9362	0.00		0	0		
38.00	53.10	FG,SE	65	90	grey/green/brown, pillowed, wk-mod se, mn cl/ca, 7% qz-ca strgrs < 5cm wide w/ smsv tourm, E192422 @ 48.1	40.30	52.00	11.70							
						52.00	53.00	1.00	C9363	0.01		3	0		
53.10	53.25	QZ,TO	60	100	13cm wh/gy QV, wk ca, 35% smsv brown tourm	53.00	53.30	0.30	C9364	0.19		60	0		QV, tourr
						53.30	54.00	0.70	C9365	0.06		7	0		
53.25	55.60	FG,SE	65	90	grey/green/brown, pillowed, wk-mod se, 5% qz-ca strgrs, 5cm qz-ca strgr w/ tourm/py at lower cnt	54.00	54.70	0.70	C9366	0.03		6	0		
						54.70	55.40	0.70	C9367	0.01		4	0		
55.60	65.00	UG	70	70	iron tholeiite, grey/green, massive, wk se/cl, mod-str lx, 2% qz-ca strgrs w/ smsv brown tourm/tr py	55.40	55.90	0.50	C9368	0.06		15	1		qcs, tourr
						55.90	56.60	0.70	C9369	0.03		4	0		
65.00	79.00	UG,SE	65	90	iron tholeiite, lt grey/green, massive, coarser grained, wk se/lx, wk cl fracs, tr qz-ca strgrs	56.60	57.30	0.70	C9370	0.01		20	0		10cm qc
						57.30	58.30	1.00	C9371	0.00		1	0		

6 November 2002

Hole # : 33364



FROM	TO	ROCK-TYPE	C.A.	RQD	REMARKS	FROM	TO	WIDTH	SAMPLE #	AU G/T	Arsenic	% Qtz	% Py	% Asp	Remarks
79.00	86.80	UG	70	70	grey/green, massive, wk cl/se, wk-mod lx, wk cl frags, tr qz-ca strgrs	58.30	61.50	3.20							
						61.50	62.50	1.00	C9372	0.01		2	0		
86.80	88.00	FZ		0	blocky/broken core, wk gouge at end, 20% lost core	62.50	63.00	0.50	C9373	0.02		30	0		12cm qcs, to
88.00	105.10	UG	70	100	grey/green, massive, wk cl, mn se, wk-mod lx, WR E192423 @ 93m	63.00	63.70	0.70	C9374	0.01		10	0		7cm qcs, to
						63.70	64.70	1.00	C9375	0.01		1	0		
105.10	143.00	FG	70	90	grey/green-green, pillowed, loc mn amygs, wk-mod cl, loc mn se, tr qz-ca strgrs	64.70	184.70	120.00							EOH.
143.00	165.00	FG, SE	70	95	grey/green/tan, wk se, loc mn cl/ca, pillowed w/ mn pil bx, tr qz-ca strgrs										
165.00	184.70	FG	65	95	grey/green, wk-mod cl, tr-wk se, pillowed, loc mn amygs/pil bx, tr qz-ca strgrs, EOH.										

Kinross Gold Corporation

Hole #	Easting	Northing	Elevation	Length	Date	Test	Core Size	Logged By	U/S	Target	Location \ Comments:				
33365	478858	5364589		191.1	8/19/02	EZ Shot	NQ	S. Harding	S		Aunor				
DISTANCE	AZIMUTH	DIP	POSITION X	POSITION Y	POSITION Z	REMARKS									
0.00	170	-45													
14.33	173.6	-42.7													
63.09	173.4	-42.6													
114.00	174.4	-42.1													
163.00	176.4	-41.6													
FROM	TO	ROCK-TYPE	C.A.	RQD	REMARKS	FROM	TO	WIDTH	SAMPLE #	AU G/T	Arsenic	% Qtz	% Py	% Asp	Remarks
0.00	4.20	OVb				0.00	4.20	4.20							OVb
4.20	28.40	CB	70	70	grey/green,mn se/cl,loc mn tc,mn rusty patches,tr qz-ak strgrs,mn gouge/broken core at lower cnt	4.20	29.80	25.60							
28.40	81.40	FG	70	80	grey/green,pillowed,loc mn amygs,wk cl/se,tr qz/qz-ca strgrs,tr cpy in qs at top	29.80	30.80	1.00	C9376	0.01		3	0		
81.40	90.80	UG	70	95	iron tholeiite,grey/green,massive,wk cl/se,mod lx,4cm pink/wh qz-cb strgr @ 87m,lower cnt 70 deg tca	30.80	31.80	1.00	C9377	0.02		20	0		qs's.cpy
90.80	136.00	FG,CL	70	95	pillowed,wk-mod cl,mn se,loc mn vars/amygs,6cm strgr w/ po/cp @ 104.2m,pk/wh qz-cb veining @ 113.6m	31.80	32.80	1.00	C9378	0.01			0		
136.00	145.60	UG	60	95	iron tholeiite,grey/green,massive,wk cl/mn se,tr qz-ca strgrs	32.80	103.00	70.20							
145.60	161.70	FG,CL	60	95	pillowed,wk-mod cl,mn se,loc mn vars/amygs,6cm strgr w/ po/cp @ 104.2m,pk/wh qz-cb veining @ 113.6m	103.00	104.00	1.00	C9379	0.00		4	0		
161.70	170.40	UG	60	100	grey/green,massive,wk cl/mn se,tr qz-ca strgrs	104.00	104.30	0.30	C9380	0.00		25	0		qcs,po/cp
170.40	191.10	FG,CL	60	95	grey/green-green,pillowed,loc mn vars,wk-mod cl,mn se,tr qz-ca strgrs	104.30	105.30	1.00	C9381	0.00		2	0		
						112.20	113.20	1.00	C9382	0.01		0	0		
						113.20	114.20	1.00	C9383	0.01		55	0		qzcb veini
						114.20	115.20	1.00	C9384	0.00		0	0		
						115.20	191.10	75.90							EOH.

6 November 2002

Hole # : 33365

Page 1 of 1

Date: 2003-JAN-06

GEOSCIENCE ASSESSMENT OFFICE
933 RAMSEY LAKE ROAD, 6th FLOOR
SUDBURY, ONTARIO
P3E 6B5

PLACER DOME (CLA) LIMITED/PLACER DOME
(CLA) LIMITEE
130 ADELAIDE STREET WEST
P.O. BOX 43, SUITE 3201
TORONTO, ONTARIO
M5H 3P5 CANADA

Tel: (888) 415-9845
Fax: (877) 670-1555

Submission Number: 2.24620
Transaction Number(s): W0260.01842

Dear Sir or Madam

Subject: Approval of Assessment Work

We have approved your Assessment Work Submission with the above noted Transaction Number(s). The attached Work Report Summary indicates the results of the approval.

At the discretion of the Ministry, the assessment work performed on the mining lands noted in this work report may be subject to inspection and/or investigation at any time.

If you have any question regarding this correspondence, please contact STEVEN BENETEAU by email at steve.beneteau@ndm.gov.on.ca or by phone at (705) 670-5855.

Yours Sincerely,



Ron Gashinski
Senior Manager, Mining Lands Section

Cc: Resident Geologist

Kinross Gold Corporation
(Claim Holder)

Placer Dome (Cla) Limited/Placer Dome (Cla)
Limitee
(Assessment Office)

Assessment File Library

Placer Dome (Cla) Limited/Placer Dome (Cla)
Limitee
(Claim Holder)

Christine M. Saari
(Agent)

Date / Time of Issue: Fri Dec 27 13:58:44 EST 2002

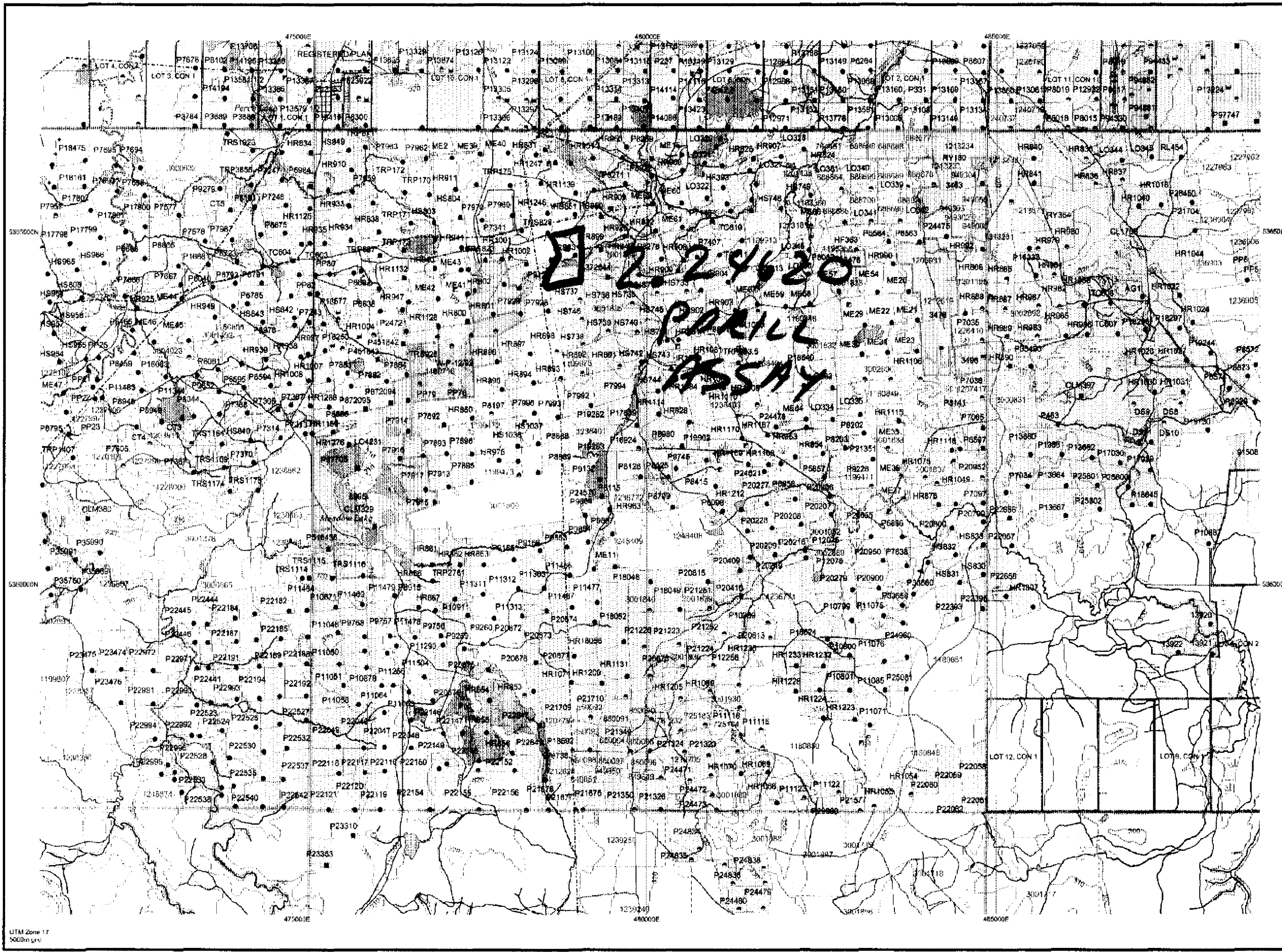
TOWNSHIP / AREA
DELORO

PLAN
G-3993

ADMINISTRATIVE DISTRICTS / DIVISIONS

Mining Division
Land Titles/Registry Division
Ministry of Natural Resources District

Porcupine
COCHRANE
TIMMINS

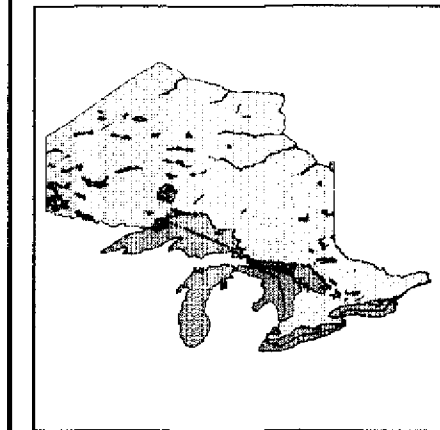


TOPOGRAPHIC

- Administrative Boundaries
- Township
- Corporation, Lot
- Provincial Park
- Indian Reserve
- City, Pt & Pile
- Contour
- Mine Shaft
- Mine Headframe
- Railway
- Road
- Trail
- Natural Gas Pipeline
- Utilities
- Tower

Land Tenure

- Freehold Patent
 - Surface And Mining Rights
 - Surface Rights Only
 - Mining Rights Only
- Leasehold Patent
 - Surface And Mining Rights
 - Surface Rights Only
 - Mining Rights Only
- License of Occupation
 - Uses Not Specified
 - Surface And Mining Rights
 - Surface Rights Only
 - Mining Rights Only
 - Land Use Permit
 - Order In Council (Not open for staking)
 - Water Power Lease Agreement
- Mining Claim
- Fid Only Mining Claims
- LAND TENURE WITHDRAWALS
 - Areas Withdrawn from Circulation
 - Mining Acts Withdrawal Types
 - Surface And Mining Rights Withdrawn
 - Surface Rights Only Withdrawn
 - Mining Rights Only Withdrawn
 - Order In Council Withdrawal Types
 - Surface And Mining Rights Withdrawn
 - Surface Rights Only Withdrawn
 - Mining Rights Only Withdrawn
 - IMPORTANT NOTICES



Those wishing to stake mining claims should consult with the Provincial Mining Recorders' Office of the Ministry of Northern Development and Mines for additional information on the status of the lands shown hereon. This map is not intended for navigational, survey, or land title determination purposes as the information shown on this map is compiled from various sources. Completeness and accuracy are not guaranteed. Additional information may also be obtained through the local Land Titles or Registry Office, or the Ministry of Natural Resources.

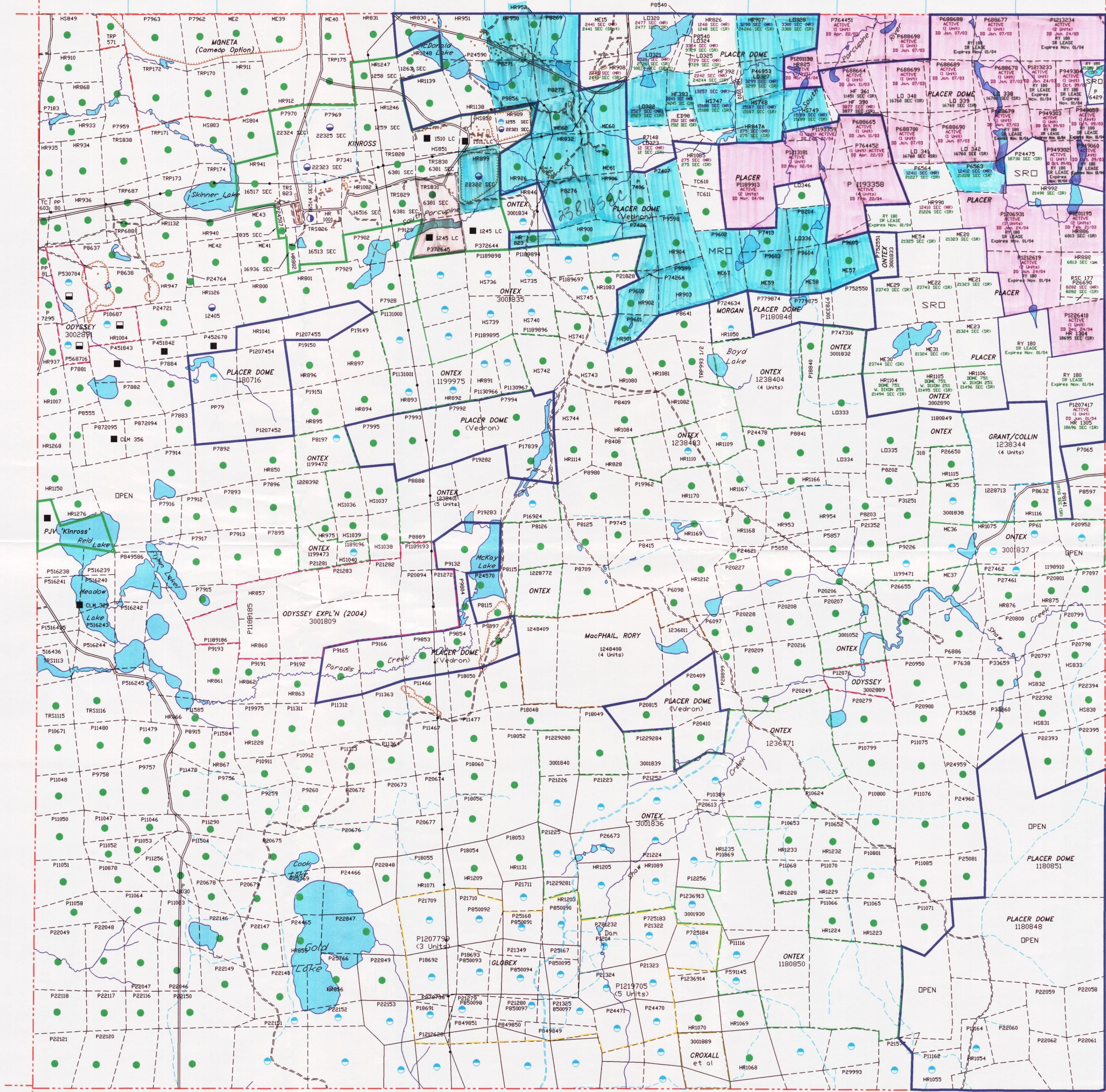
General Information and Limitations
Contact Information:
Provincial Mining Recorders' Office
Wild Green Miller Centre 933 Ramsey Lake Road
Sudbury ON P3E 6B5
Home Page: www.mndm.gov.on.ca/MNDM/MINES/LANDS/mrmapg.htm

Toll Free
Tel: (888) 415-8845 ext 5788
Fax: 1 (877) 670-1444
Map Datum: NAD 83
Topographic Data Source: Land Information Ontario
Mining Land Tenure Source: Provincial Mining Recorders' Office

This map may not show unregistered land tenure and interests in land including certain patents, leases, easements, right of way, flooding rights, licences, or other forms of disposition of rights and interests from the Crown. Also certain land tenure and land uses that restrict or prohibit free entry to stake mining claims may not be illustrated.



2. 246 20



ATKIN	ROBERTY	THORBURN	NEED	CARNEGIE	PROSSER	TULLY	LITTLE	MCCART
FORTUNE	BYERS	LOVELAND	MACDONALD	KIDD	MARK	DEVAN	EVELYN	DUNDEALD
COTE	ROBB	HAMILTON	JESSOP	ROBERTY	WELLS	MATHESON	GERMAN	STOCK
MASSEY	TURNBULL	GODFREY	MOUNTJOY	TESDALE	WHITNEY	CODY	HACKLEN	BIRD
WHEATCROFT	CARROLLAN	BRISTOL	BIGDEN	WELLS	SHAW	CARRAN	THOMAS	SHEATH
KEEFER	DENTON	HORNELDE	PRICE	ADAMS	ELDRIDGE	LANGRISH	BLACKBURN	TOMMINS
HILLARY	REYNOLDS	MCKEAN	FRIPP	HEATHAR	DOUGLAS	FALLON	FASDEN	
PHARAOH	CHILDERS	MOSE	DOYLE	HARGREAVE	BARTLETT	GERIE	CLEAVER	MCCOY
CROTHERS	MCCRIE	HASSARD	BEDDER	ENGLISH	ZAVITZ	HINDS	ARVILLE	
NORTHROP	ROBIN	GOLIN	HENDER	SEMPL	HUTT	MONTROSE	BANKS	BURN

INDEX MAP 0 10 20 30 KILOMETRES

2. 246 20

Renew

- Beneficial Interest & Contiguity

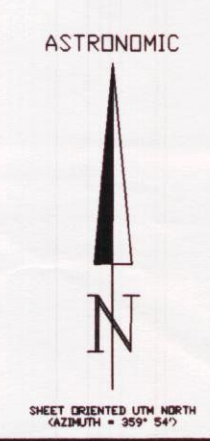
work done on claims

- PROPERTY OWNERSHIP**
- PATENT, SURFACE & MINING RIGHTS
 - PATENT, SURFACE RIGHTS ONLY
 - ◐ PATENT, MINING RIGHTS ONLY
 - LEASE, SURFACE & MINING RIGHTS
 - ▣ LEASE, SURFACE RIGHTS ONLY
 - ▤ LEASE, MINING RIGHTS ONLY

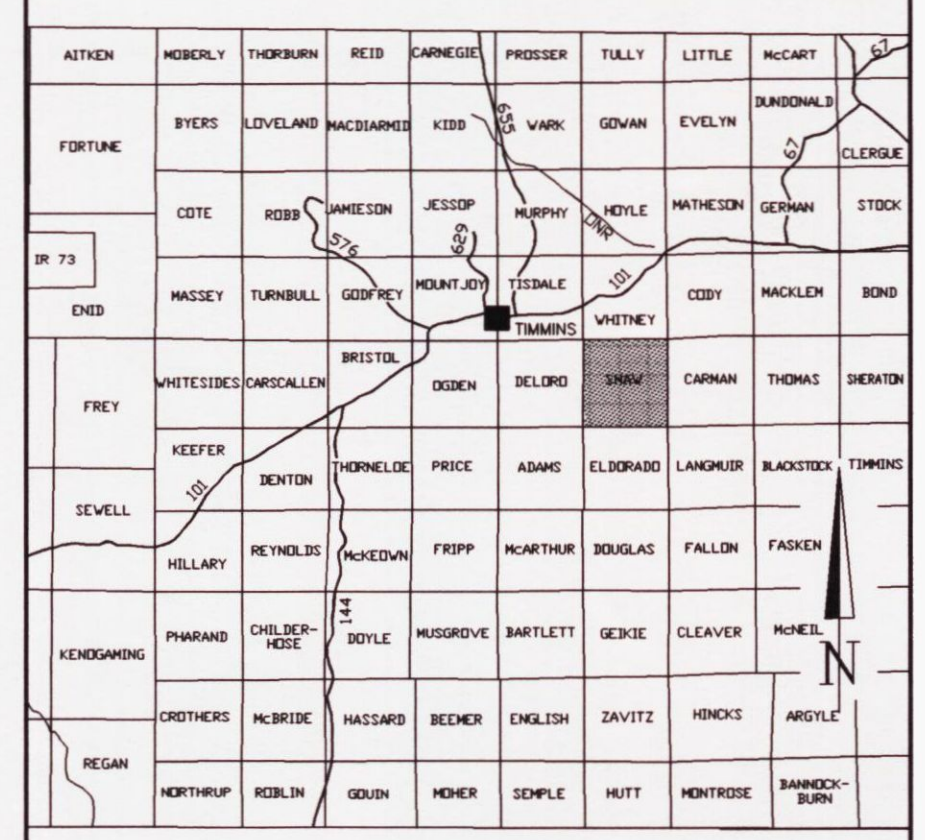
Porcupine Joint Venture
Regional Exploration Office Timmins ONTARIO

DELDORO TOWNSHIP
DISPOSITION OF CROWN LANDS

TRACED	AHR.	DATE:	05/96	NTS:	PROJECT:
DRAWN	AHR.	DATE:	05/96	MAP No.:	CLAIMED FILE: G-3993
SUPERVISED	Ken Tylee	DATE:	05/96	SCALE:	0 250 500 750 1000m
REVISED	AHR.	DATE:	OCT. 15/2002		



Whitney Twp.



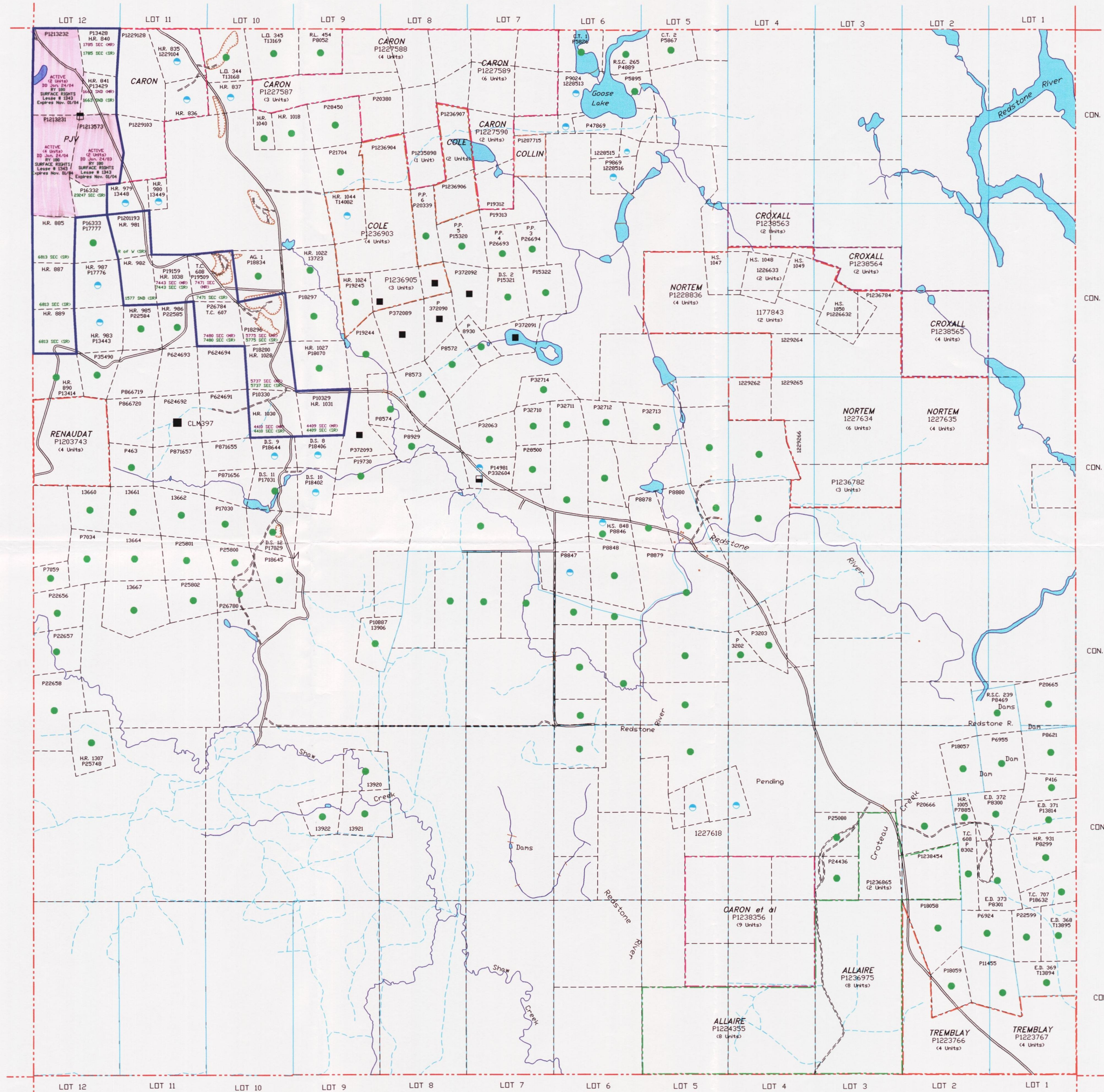
INDEX MAP

2.24620

Renew

Deloro Twp.

Carman Twp.



Eldorado Twp.

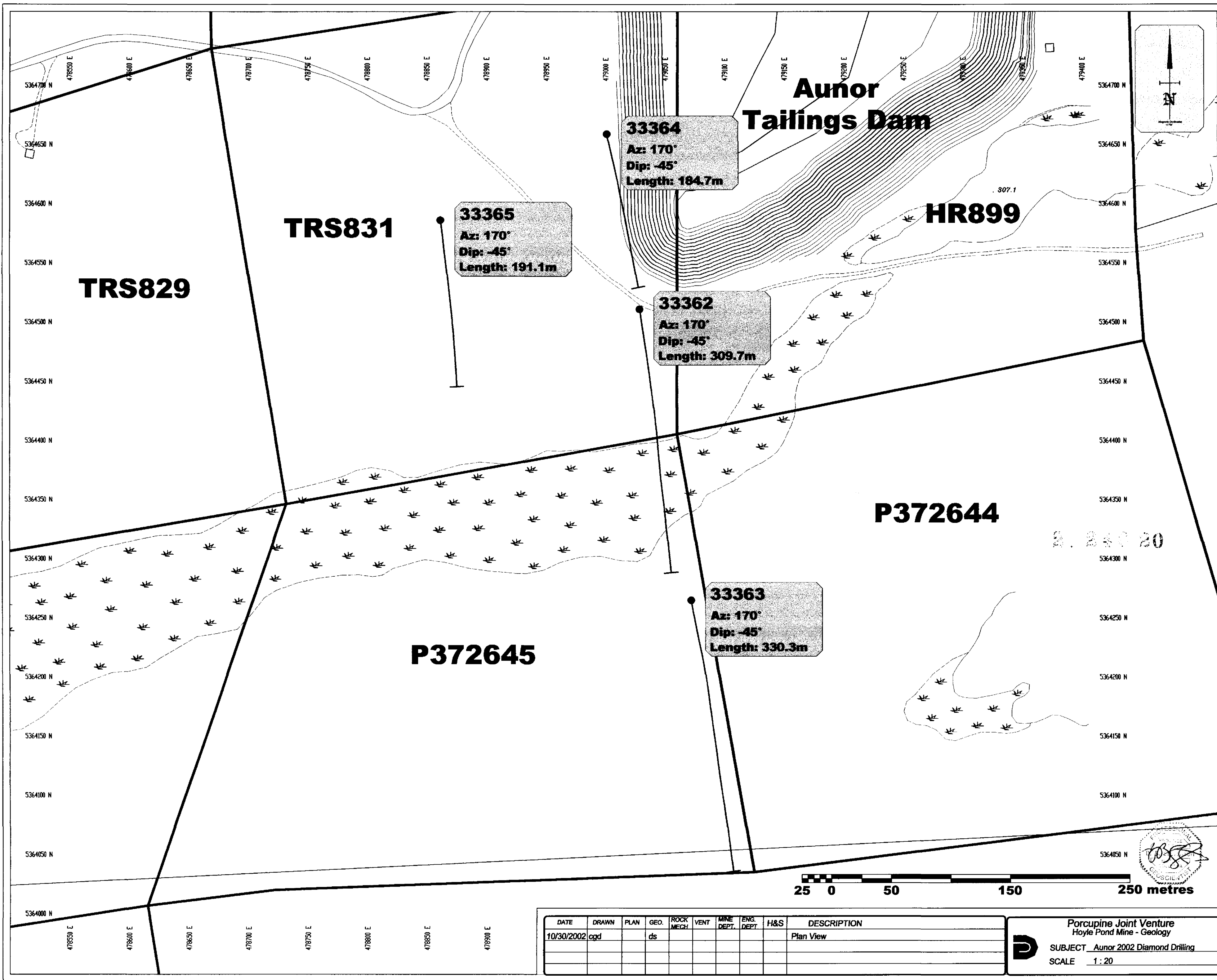
- PROPERTY OWNERSHIP**
- PATENT, SURFACE & MINING RIGHTS
 - PATENT, SURFACE RIGHTS ONLY
 - PATENT, MINING RIGHTS ONLY
 - LEASE, SURFACE & MINING RIGHTS
 - LEASE, SURFACE RIGHTS ONLY
 - LEASE, MINING RIGHTS ONLY

Porcupine Joint Venture
Regional Exploration Office Timmins ONTARIO


SHAW TOWNSHIP
DISPOSITION
OF
CROWN LANDS

TRACED	AHR.	DATE:	03/99	NTS:	PROJECT:
DRAWN	AHR.	DATE:	03/99	MAP No.:	CLAIMSHA
SUPERVISED	Ken Tylee	DATE:	03/99	SCALE:	1:200,000
REVISED	AHR.	DATE:	MAY 15/2002		

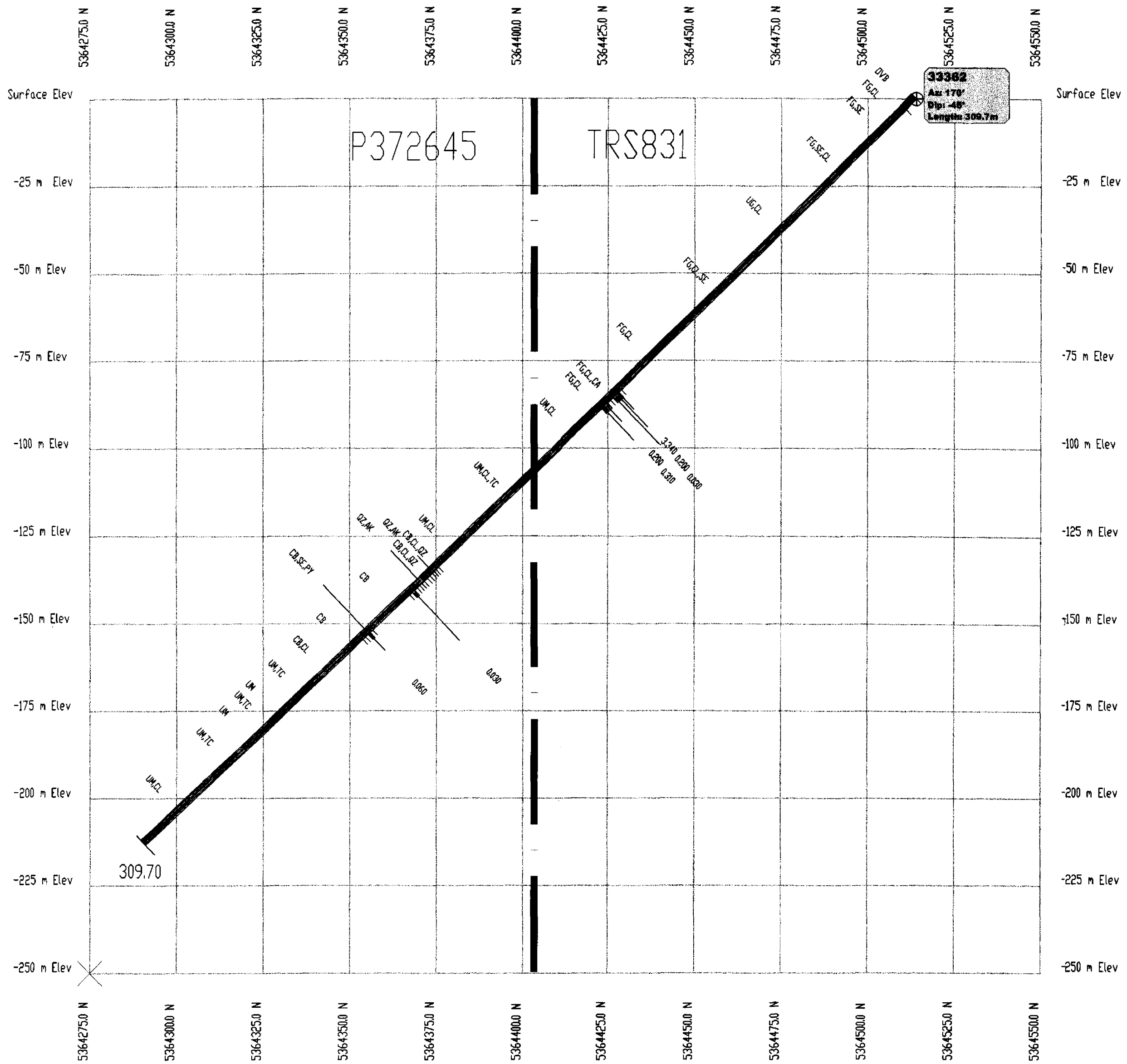




DATE	DRAWN	PLAN	GEO.	ROCK MECH.	VENT	MINE DEPT.	ENG. DEPT.	H&S	DESCRIPTION
10/30/2002	cgd		ds						Plan View

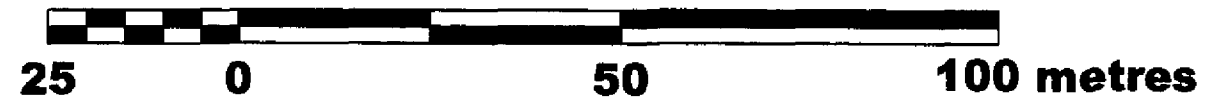

Porcupine Joint Venture
 Hoyle Pond Mine - Geology
 SUBJECT Auñor 2002 Diamond Drilling
 SCALE 1 : 20



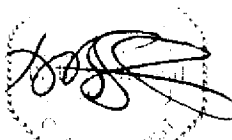


LITHOLOGIES

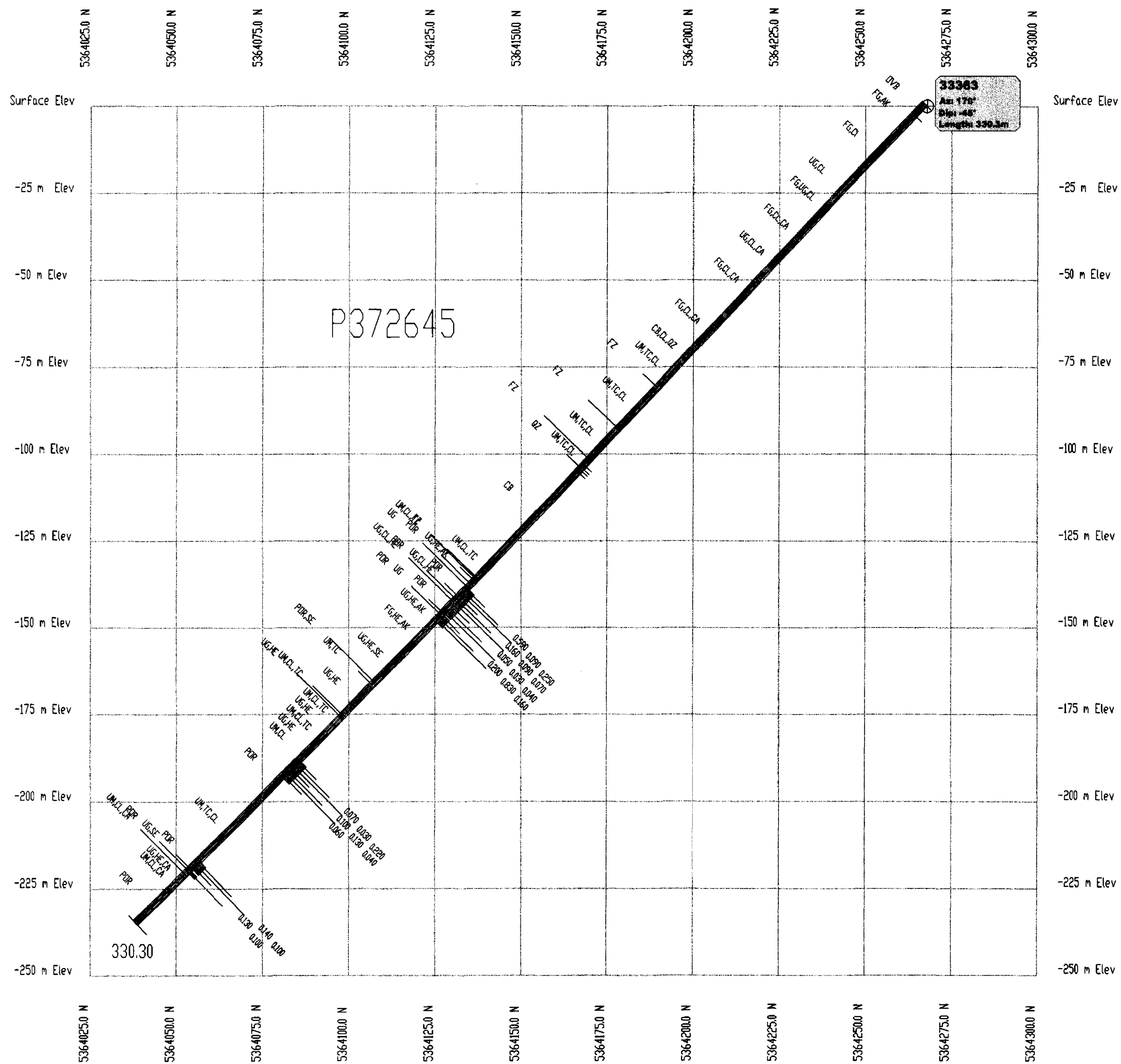
- CB Carb Rock
- DIA Diabase
- FG Flowy Greenstone
- FV Felsic Volcanic
- FZ Fault Zone
- HA Highly Altered
- IF Iron Formation
- POR Porphyry
- QZ Quartz
- UG Uniform Greenstone
- UM Ultramafic



DATE	DRAWN	PLAN	GEO.	ROCK MECH	VENT	MINE DEPT.	ENG. DEPT.	H&S	DESCRIPTION
10/30/2002	cgd		ds						Vertical Section DDH 33382

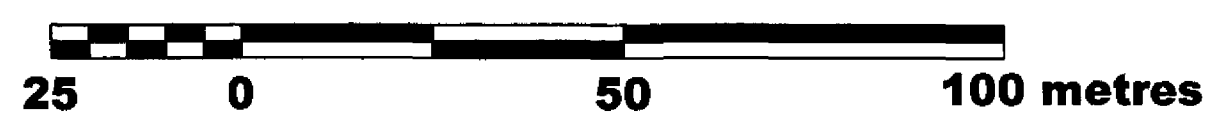

Porcupine Joint Venture
 Hoyle Pond Mine - Geology
 SUBJECT Aunor 2002 Diamond Drilling
 SCALE 1 : 10





LITHOLOGIES

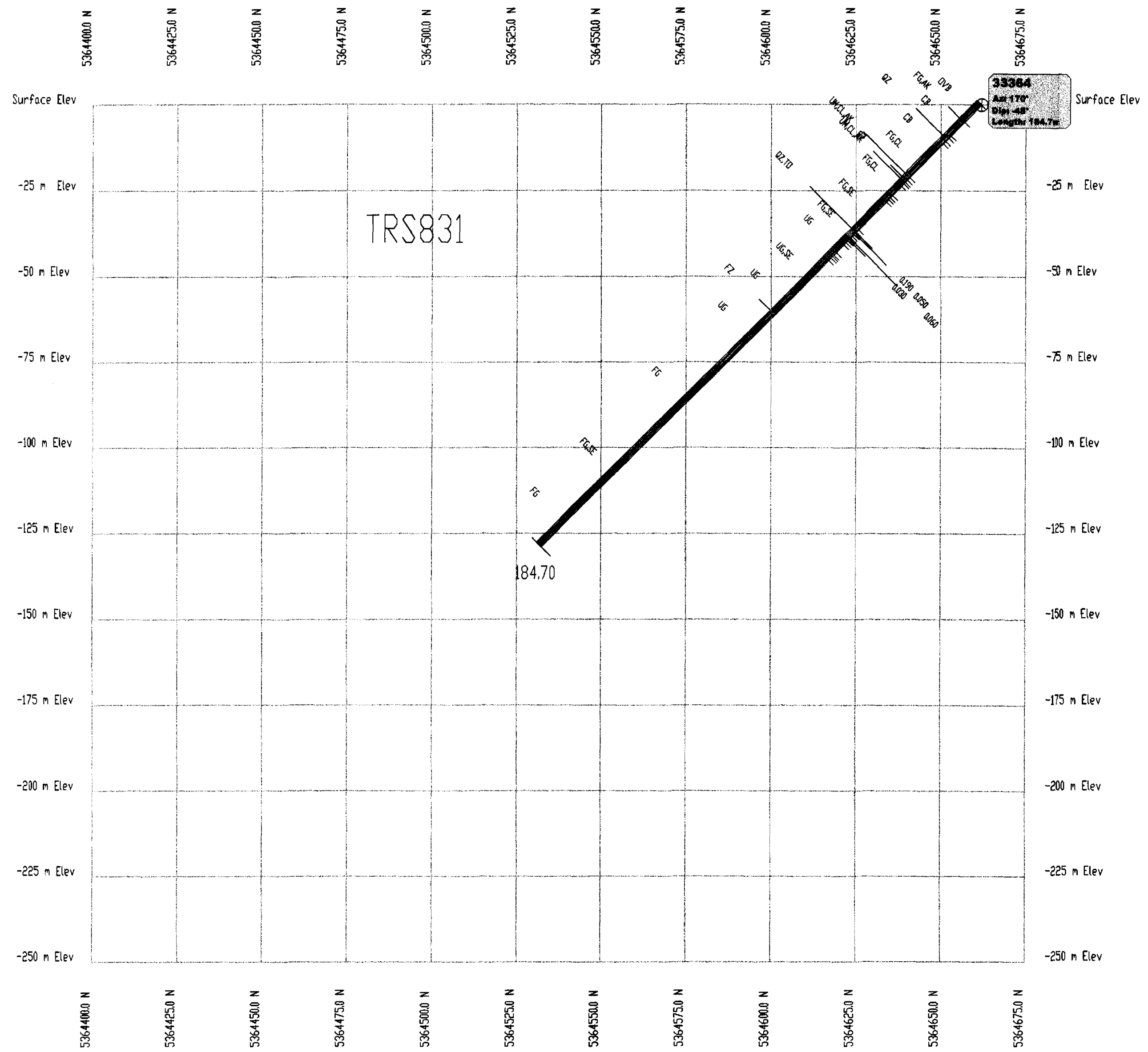
- CB Carb Rock
- DIA Diabase
- FG Flowy Greenstone
- FV Felsic Volcanic
- FZ Fault Zone
- HA Highly Altered
- IF Iron Formation
- POR Porphyry
- QZ Quartz
- UG Uniform Greenstone
- UM Ultramafic



DATE	DRAWN	PLAN	GEO.	ROCK MECH	VENT	MINE DEPT.	ENG. DEPT.	H&S	DESCRIPTION
10/30/2002	cgd		ds						Vertical Section DDH 33383

Porcupine Joint Venture
 Hoyte Pond Mine - Geology

SUBJECT Aunor 2002 Diamond Drilling
 SCALE 1 : 10



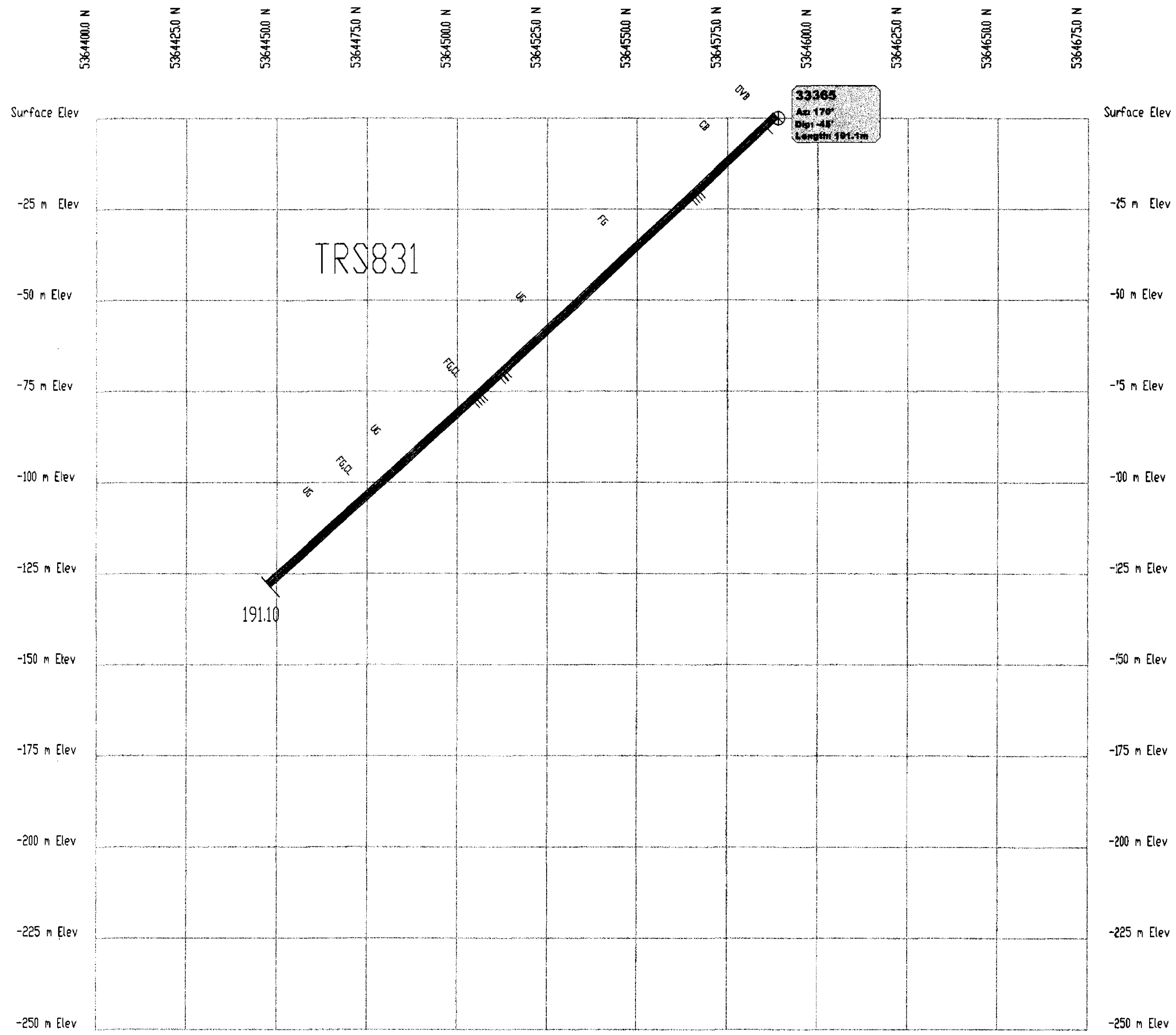
- LITHOLOGIES**
- CB Carb Rock
 - DIA Diabase
 - FG Flowy Greenstone
 - FV Felsic Volcanic
 - FZ Fault Zone
 - HA Highly Altered
 - IF Iron Formation
 - POR Porphyry
 - QZ Quartz
 - UG Uniform Greenstone
 - UM Ultramafic

DATE	DRAWN	PLAN	GEO.	ROCK MECH	VENT	MINE DEPT.	ENG. DEPT.	H&S	DESCRIPTION
10/30/2002	cqd		ds						Vertical Section DDH 33364

Porcupine Joint Venture
 Hoyle Pond Mine - Geology
 SUBJECT Aunor 2002 Diamond Drilling
 SCALE 1:10

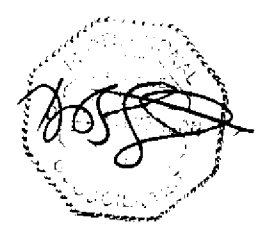
42A06942033 2.24620 DELCORO
 260





LITHOLOGIES

- CB Carb Rock
- DIA Diabase
- FG Flowy Greenstone
- FV Felsic Volcanic
- FZ Fault Zone
- HA Highly Altered
- IF Iron Formation
- POR Porphyry
- QZ Quartz
- UG Uniform Greenstone
- UM Ultramafic



DATE	DRAWN	PLAN	GEO.	ROCK MECH	VENT	MINE DEPT.	ENG. DEPT.	H&S	DESCRIPTION
10/30/2002	cpd		ds						Vertical Section DDH 33365

Porcupine Joint Venture
 Hoyte Pond Mine - Geology
 SUBJECT Aunor 2002 Diamond Drilling
 SCALE 1 : 10

