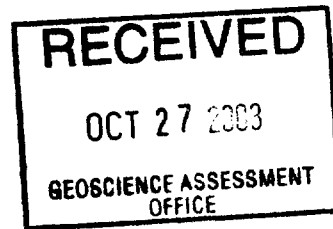


# Prospecting Report

L.B.L. Richgold Mines Inc.

Deloro Township



**2.25943**

B.J. McKay and

L.B. Letourneau

1 July 2003



This report covers the prospecting work carried out in the spring of 2003 on patent and staked claims located in Deloro and Ogden Townships.

The patent claims in Deloro have been held for several years. The staked claims in Ogden Township were acquired in 2000. Refer to Figure 1.

Access to the property is via a forestry access road south from Timmins.

A total of 11 days were spent prospecting by B.J. McKay (BM), L.B. Letourneau (LBL - Lic# M20347) and V. Toner (VT - Lic # M25903).

23 May 2003

LBL, VT and BM conducted a traverse westward from the bend in the main access road located on the Ogden-Deloro Township line. Refer to Figure 1 traverse line "May 23". The traverse line crossed a wet swamp then encountered an outcrop showing signs of earlier work. This area was designated for follow-up work. The traverse line continued southward along an old picket line, L21E to the old baseline. A single sample, L1, was obtained from a quartz vein hosted by mafic tuff at approximately 4+00N. No additional outcrops were encountered along L21 or the baseline eastward to the township line and northeastward to the main road. The baseline was quite wet given the proximity of Paradise Creek. Claims covered by this traverse include 1238662 and 1238663.

24 May 2003

VT and BM traversed the northwest portion of claim 1238662 in an effort to locate claim post #4. Refer to traverse line - May 24 on Figure 1. A number of low-lying outcrops of mafic tuff were located. No samples were obtained. The post was not located.

21 & 25 May, 3 June 2003

LBL and VT, accompanied by Pete Courville (PC) conducted two prospecting traverses, in claim P516238, on the southwest corner of Reid Lake. Subsequently two quartz samples, L4 and L5, were obtained from mafic tuff on June 3 when the area was surveyed with a beep mat. Refer to Reid Lake #1 on Figure 1 and to detailed manual sketch labeled Reid Lake #1 and #2.

26 & 27 May, 4 & 6 June 2003

LBL and VT, accompanied by PC conducted two prospecting traverses, in claim P516239, on the southeast corner of Reid Lake. Subsequently one quartz sample, L6, was obtained from mafic tuff on June 4 when the area was surveyed with a beep mat. Refer to Reid Lake #2 on Figure 1 and to detailed manual sketch Reid Lake #1 and #2.

1 & 3 June 2003

LBL and VT, accompanied by PC conducted a prospecting traverse, in claims P516243 & 516244, on the southwest corner of Meadow Lake. Subsequently one quartz sample, L2, was obtained from mafic flow on June 3 when the area was surveyed with a beep mat. Refer to Meadow Lake #1 on Figure 1 and second detailed manual sketch labeled Meadow Lake #1.

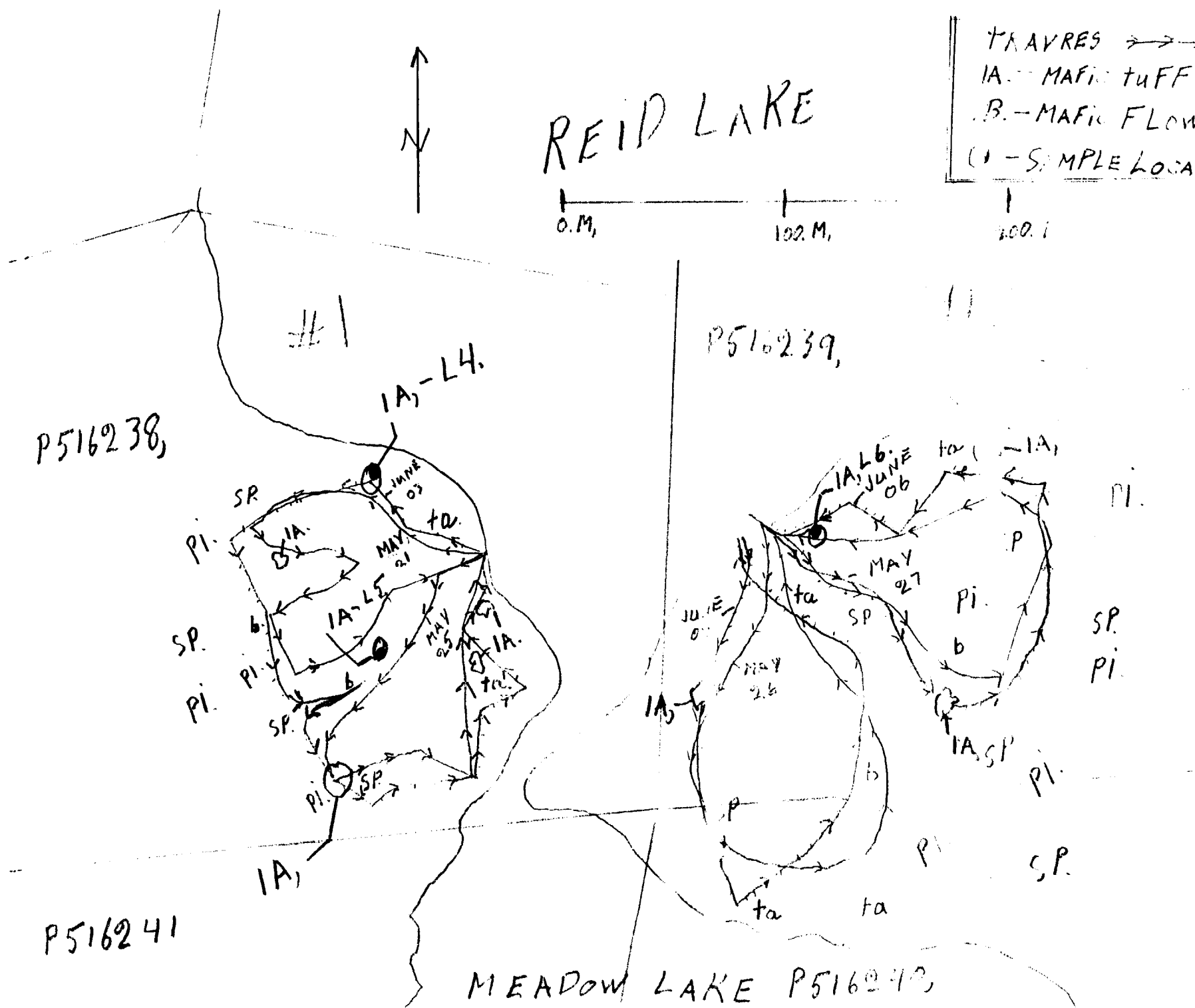
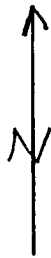
*Lilianne Letourneau*

*Bryan McKay*

# REID LAKE

TRAVES  $\rightarrow\rightarrow\rightarrow$   
 IA. - MAFIC TUFF  
 B. - MAFIC FLOW  
 ( ) - SAMPLE LOCATION

0.M. 100.M. 100.1



P516238,

IA<sub>1</sub>-L4.

P516239,

P516241

MEADOW LAKE P516242,

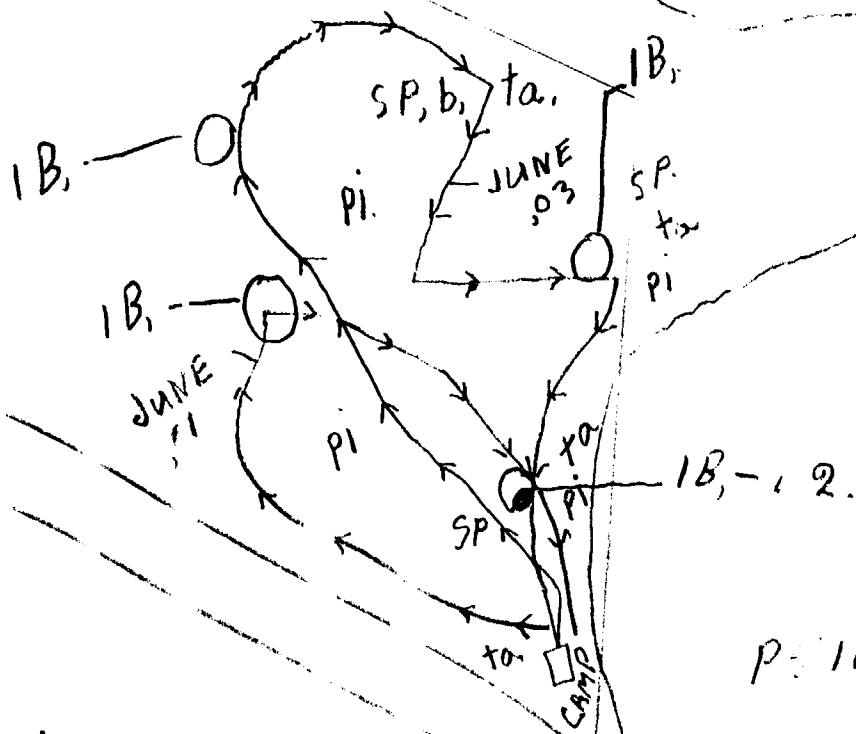
# MEADOW LAKE

#1

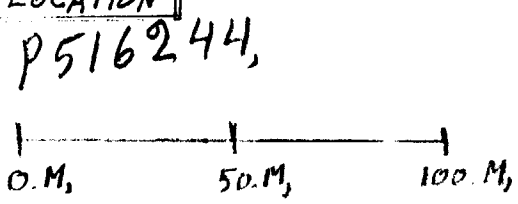
P516242,

P516243,

P516244,



TRAVRES  
IA. - MAFIC tUFF  
IB. - MAFIC FLOW  
⊙ - SAMPLE LOCATION



P: 16<sup>00</sup> 42,





Established 1928

# Swastika Laboratories Ltd

Assaying - Consulting - Representation

## Assay Certificate

3W-2263-RA1

Company: **LBL RICHGOLD MINES LTD**

Date: JUL-17-03

Project:

Attn:

We hereby certify the following Assay of 5 Rock samples submitted JUL-09-03 by .

Sample Number	Au g/tonne	Au Check g/tonne	Ag g/tonne	Cu PPM	Ni PPM	Pb PPM	Zn PPM
L-1	0.06	-	0.2	-	-	-	-
L-2	0.10	0.09	0.2	146	28	1	45
L-4	Nil	-	0.1	11	9	1	24
L-5	Nil	-	0.1	-	-	-	-
L-6	Nil	-	0.1	-	-	-	-

Certified by Peris Chantre

May: Base camp May 18<sup>th</sup> to June 10<sup>th</sup> 2003

Security: 14 days - René, St. John	\$ 2,100.00
Prospecting: 2 days - Lil, Brian, Val (23-24)	\$ 900.00
Prospecting: 1 day - Lil, Val, (May 21)	\$ 300.00
Rain: 1 day - Lil, Val, (May 25)	\$ 300.00
Prospecting: 1 day - Lil, Val, (May 26)	\$ 300.00
Prospecting: 1 day - Lil, Val, (May 27)	\$ 300.00
Guard - Pete Courville: 4 days	\$ 600.00
	<hr/>
	\$ 4,800.00

June: Base camp: June

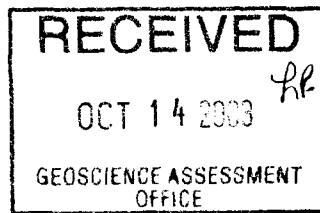
Security 10 days - René: June 1 - June 10	\$ 1,500.00
Prospecting: 1 day - Lil - Val - June: 1 <sup>st</sup>	\$ 300.00
Prospecting: 1 day - Lil - Val - June: 2 <sup>nd</sup>	\$ 300.00
Prospecting: 1 day - Lil - Val - June 4 <sup>th</sup>	\$ 300.00
Prospecting: 2 days - Lil - Jason - June 5-6	\$ 900.00
Guard and Boat - Pete Courville 5 days	\$ 750.00
	<hr/>
	\$ 4,050.00
	4,800.00

TOTAL \$ 8,850.00

**Beep Mat and  
Prospecting Report**

**L.B.L. Richgold Mines Inc.**

**Deloro Township**



**B.J. McKay**

**Marathon, Ontario**

**1 July 2003**



## Table of Contents

Introduction.....	1
Property Location, Access and Claims .....	1
Previous Work .....	1
Current Work .....	1
Regional Geology .....	1
Property Geology.....	2
Results .....	3
References .....	3
Certificate .....	4

### *List of maps*

Figure 1: Claim and Survey Location Map..... after page 1



## **Introduction**

This report was prepared at the request of the owner, L.B.L. Richgold Mines Inc. with information provided to the author. Beep Mat surveying and prospecting was conducted in three areas to further determine the extent of economic mineralization on the property.

The author has visited the property.

## **Property Location, Access and Claims**

The property straddles the Deloro and Ogden Township boundary. The property is located approximately 6 km south of Timmins and is accessible via Pine Street South.

The property consists of 11 leased claims in Deloro Township and 8 units in 3 staked claims in Ogden Township. The Ogden claims, 1238662, 1238663 and 1238664, were acquired by staking in August, 2000. Refer to Figure 1.

The current work was conducted to meet assessment requirements.

## **Previous Work**

Work has been intermittently conducted on and near the property since 1909. Assessment file T-444 reports on some test pits sunk by Bill and John Mitchell on claim 1116 at the south boundary of the current property. Ridgegold Mines Ltd conducted stripping and trenching from 1923 to 1930. In 1975 Goshawk Mines Ltd. completed ground magnetics and diamond drilling. J. St. Gelais and L. Letourneau completed stripping, trenching and drilling from 1979 to 1983. Amax subjected the area to an airborne MAG and EM survey in 1980. L.B.L. Richgold Mines conducted additional stripping, trenching and drilling in 1986, 1991 and 2000.

## **Current Work**

The Beep Mat surveying and prospecting was conducted during the period, 18 May to 6 June 2003, under the supervision of the owner, Lillian Letourneau. Rene St. Gelais, Tillsonburg, Jack and Dixie St. Gelais, Peter and Jason Courville, Glory Tim, Anthony Lionello, Val Toner and Kent Caron, all of Timmins provided assistance.

The work was conducted from a camp established on the property.

## **Regional Geology**

The L.B.L. Richgold claim group "lies in the western extremity of the Abitibi Greenstone Belt which is famous for its gold and base-metal deposits. All rocks found in the immediate area, except for Proterozoic diabase dykes, are of Archean Age." (Boisvert, 1986.)

The Richgold property "is underlain by rocks of the Deloro Group. The mafic to intermediate volcanic rocks which dominate this area are characteristic of the Middle Metavolcanic Formation (Pyke, D.R., 1982). The claim group is situated on the western limb of the Shaw Dome, which forms the dominant structural feature of the area. The property lies approximately 1 kilometre to

the south of the Destor-Porcupine Fault which is believed to control the distribution of major gold deposits in the Timing Mining District." (Boisvert, 1986).

## Property Geology

"Much of the property is underlain by fine-grained tuffs and lapilli-tuffs of basaltic to andesitic composition. Bedding measurements are uncommon and these strike east and dip steeply to the north. On occasions, andesitic feldspar crystal tuffs, comprising 20% to 35% white plagioclase phenocrysts (1-2mm) occur as 0.3 to 1 metre thick interbeds."

"A few outcrops of andesitic to dacitic tuffs are dispersed throughout the property; the dacites are intercalated with their more mafic counterparts and do not appear to form any laterally "persistent" horizons."

"Two banded iron formations (BIF) were identified on the property. One occurs on the east shore of Meadow Lake (author's note: one of the locations of the current phase of work) and the other, just beyond the southwestern extremity of the claim group (author's note: on the Deloro side of the township line). "...the iron-formation found east of Meadow Lake has apparently been the subject of intense structural deformation."

"The BIF strike roughly east and dip steeply to the north. They are well banded and comprise of rhythmic alterations of aphanitic black magnetite-shale, white-pink-orange chert and pyrite-pyrrhotite-limonite-carbonate layers. The thickness of individual layers varies considerably, ranging from 1 cm to over 1 metre. Pyrite stringers, blebs and pseudo-nodules occur located adjacent to the sulfide ironstone...."

"Numerous fracture cleavages as well as white and cherty quartz veins cross-cut the local stratigraphy, especially in the iron-formation found east of Meadow Lake: this attests to the intense brittle structural deformation which may have occurred locally. The occurrence of convoluted banding, boudin structures and pseudo-fluidization structures in the magnetite-chert iron-formation is indicative of a soft-sediment mode of deformation. Locally, the BIF has been intensely folded, squeezed and mixed, thus losing its banded appearance and taking on a rather "irregular" appearance. A breccia-type texture results, with rounded fragments of magnetite-shale being enclosed in a groundmass of chert and vice-versa."

"The regional foliation (S1?) is generally consistent throughout the property: its strike ranges from 80° to 120° and the dip varies between 70° South to 90°.

"At least a dozen of large quartz veins have been identified on the property. The veins consist of milky white quartz and often contain sericitized, silicified and/or chloritized wallrock xenoliths (1mm-30cm). All veins visited contained at best but a few specks of pyrite (i.e., less than 1% sulfides). The vein thicknesses ranged from 1cm to over 1 metre and their outcrop exposure could be followed on strike for distances varying between 1 metre and 10 metres."

"All major veins found in the northern sector of the property are apparently confined to a zone of siliceous (altered) sericitic and carbonatized volcanics. The alteration zone strikes 100° to 120° and cross-cuts the local stratigraphy 98° to 100°. The vein system, along with its alteration envelope can be followed from the southwest shore of Reid Lake to its southeast shore and possibly beyond. An outcrop displaying carbonatized and sheared volcanics in the northwestern part of the property could conceivably represent the western extension of this zone." (Boisvert, 1986.)

## **Results**

Figure 1 shows the areas surveyed by Beep Mat. Several rock samples were obtained during the survey and submitted for analysis. Results are pending at the time of writing and will be filed in a later report.

Rock samples were submitted to Swastika Laboratories for precious and base metal analysis.

Rock samples were taken from areas that responded to the Beep Mat.

## **References**


Boisvert, G.J., 1986, L.B.L. Richgold Mines Inc., Report on Geological Survey on the Meadow Lake Property, Deloro Township, Province of Ontario. Val d'Or, Quebec, August 20<sup>th</sup>, 1986. Timmins Assessment File T-2981. 20pp.

## Certificate of Qualifications

I, Bryan Joseph McKay, do certify that:

- 1) I am a resident of Porcupine, Ontario
- 2) I graduated from St. Francis Xavier University, B.Sc. (Major in Geology) in 1974 and from McGill University, M.Sc.(A.) (Mineral Exploration) in 1982.
- 3) I am a member of the Association of Professional Engineers & Geoscientists of Saskatchewan.
- 4) I have been continuously active in the exploration and mining industry since graduation in 1974.
- 5) I have visited the L.B.L. Richgold Mines Inc. property in Deloro and Ogden Townships discussed in this report.
- 6) I do not own, directly or indirectly, any interest in the property discussed in this report nor do I intend to receive, either directly or indirectly, any interest in the property discussed herein.

Signed,



Bryan J. McKay,  
M.Sc. (A.), P. Geol.

Marathon, Ontario  
1 July 2003.



Established 1928

# Swastika Laboratories Ltd

Assaying - Consulting - Representation

## Assay Certificate

3W-2263-RA1

Company: **LBL RICHGOLD MINES LTD**

Date: JUL-17-03

Project:

Attn:

We hereby certify the following Assay of 5 Rock samples submitted JUL-09-03 by .

Sample Number	Au g/tonne	Au Check g/tonne	Ag g/tonne	Cu PPM	Ni PPM	Pb PPM	Zn PPM
L-1	0.06	-	0.2	-	-	-	-
L-2	0.10	0.09	0.2	146	28	1	45
L-4	Nil	-	0.1	11	9	1	24
L-5	Nil	-	0.1	-	-	-	-
L-6	Nil	-	0.1	-	-	-	-

Certified by *Peris Chantre*

1 Cameron Ave., P.O. Box 10, Swastika, Ontario P0K 1T0  
Telephone (705) 642-3244 Fax (705) 642-3300



Date: 2003-OCT-30

GEOSCIENCE ASSESSMENT OFFICE  
933 RAMSEY LAKE ROAD, 6th FLOOR  
SUDBURY, ONTARIO  
P3E 6B5

L.B.L. RICHGOLD MINES INC.  
R.R. #3  
TILLSONBURG, ONTARIO  
N4G 4G8 CANADA

Tel: (888) 415-9845  
Fax: (877) 670-1555

**Submission Number:** 2.25943  
**Transaction Number(s):** W0360.01129

Dear Sir or Madam

**Subject: Approval of Assessment Work**

We have approved your Assessment Work Submission with the above noted Transaction Number(s). The attached Work Report Summary indicates the results of the approval.

At the discretion of the Ministry, the assessment work performed on the mining lands noted in this work report may be subject to inspection and/or investigation at any time.

The latest revisions received address many of the deficiencies. Future submissions will require additional details in the report on the work performed. This is particularly important when the maps show only a small area repeatedly being prospected. Please note costs for security and guards are not an eligible expense.

Assessment work credit has been approved as outlined on the attached Work Report Summary. The assessment credit is being reduced by \$6,548. The TOTAL VALUE of assessment credit that will be allowed, based on the information provided in this submission, is \$3,412.

If you have any question regarding this correspondence, please contact BRUCE GATES by email at [bruce.gates@ndm.gov.on.ca](mailto:bruce.gates@ndm.gov.on.ca) or by phone at (705) 670-5856.

Yours Sincerely,



Ron C. Gashinski  
Senior Manager, Mining Lands Section

**Cc:** Resident Geologist

L.B.L. Richgold Mines Inc.  
(Claim Holder)

Bryan Joseph Mckay  
(Agent)

Assessment File Library

L.B.L. Richgold Mines Inc.  
(Assessment Office)

Date / Time of Issue: Wed Oct 29 13:13:00 EST 2003

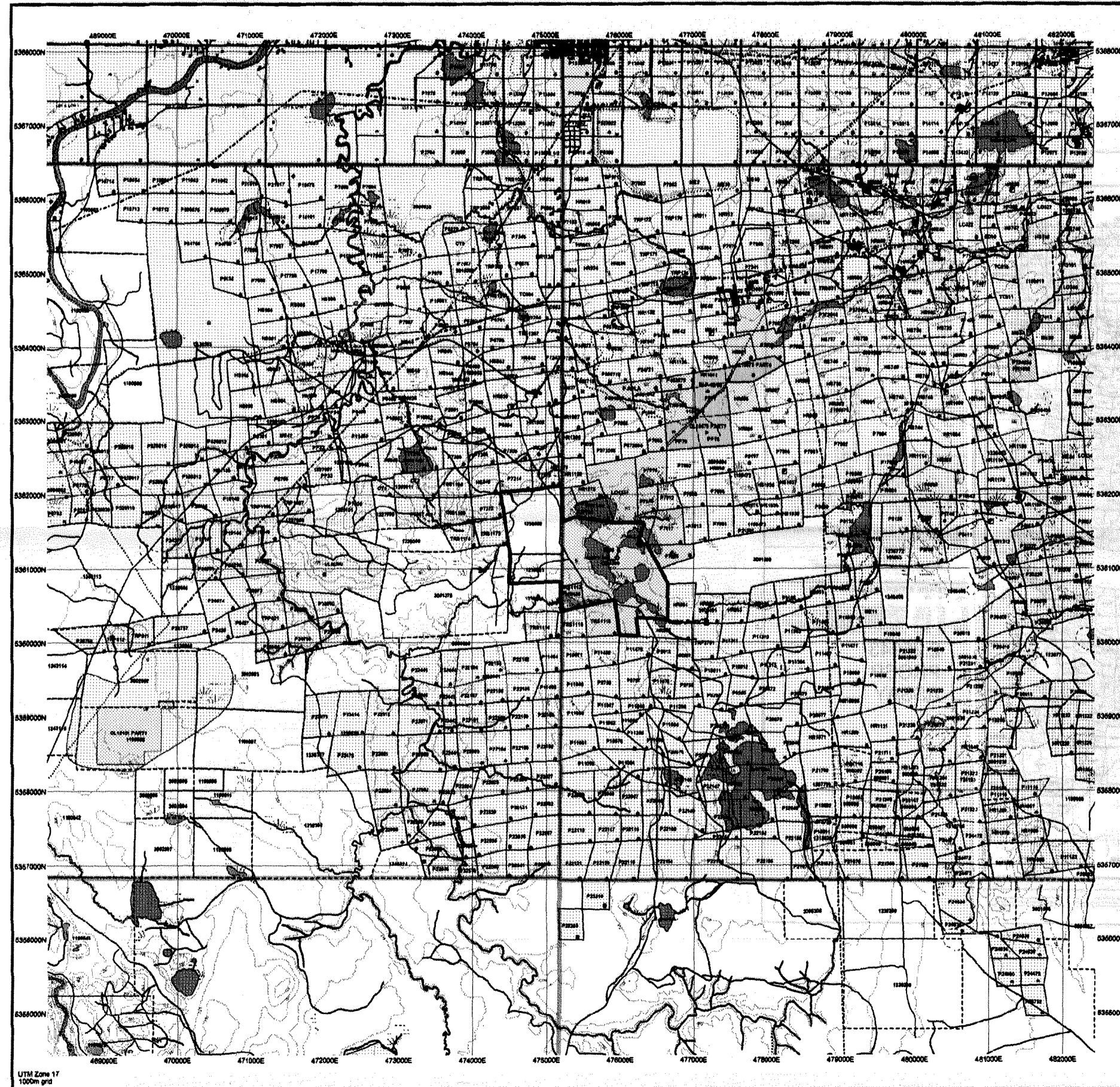
TOWNSHIP / AREA  
DELORO

PLAN  
G-3993

ADMINISTRATIVE DISTRICTS / DIVISIONS

Mining Division  
Land Titles/Registry Division  
Ministry of Natural Resources District

Porcupine  
COCHRANE  
TIMMINS



**TOPOGRAPHIC**

- Administrative boundaries
- Township
- Government Lot
- Provincial Park
- Subsid Reserve
- Coastal Protection
- Water
- Shaded
- Highway
- Road
- Rail
- Stream
- Water
- Forest

**Land Tenure**

**Proprietary Patent**

- Surface Area Mining Rights
- Surface Rights Only
- Mining Rights Only

**Leasehold Patent**

- Surface Area Mining Rights
- Surface Rights Only
- Mining Rights Only

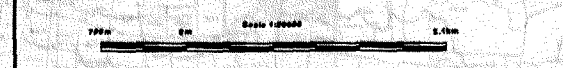
**Mineral or Concession**

- Other Not Specified
- Surface Area Mining Rights
- Surface Rights Only
- Mining Rights Only
- Leasehold Patent
- Other In Case of (Not open for mining)
- Water Power License Agreement
- Mining Claim
- Filed Only Mining Claims

**LAND TENURE WITHDRAWALS**

- 12M: Areas Withdrawn from Disposition
- Mining Claims Withdrawn
- 15M: Surface and Mining Rights Withdrawn
- 16M: Surface and Mining Rights Withdrawn
- 17M: Surface and Mining Rights Withdrawn
- 18M: Surface and Mining Rights Withdrawn
- 19M: Surface and Mining Rights Withdrawn
- 20M: Surface and Mining Rights Withdrawn
- 21M: Surface and Mining Rights Withdrawn
- 22M: Surface and Mining Rights Withdrawn
- 23M: Surface and Mining Rights Withdrawn
- 24M: Surface and Mining Rights Withdrawn
- 25M: Surface and Mining Rights Withdrawn
- 26M: Surface and Mining Rights Withdrawn
- 27M: Surface and Mining Rights Withdrawn
- 28M: Surface and Mining Rights Withdrawn
- 29M: Surface and Mining Rights Withdrawn
- 30M: Surface and Mining Rights Withdrawn

**IMPORTANT NOTICES**



LAND TENURE WITHDRAWAL DESCRIPTIONS

Mineral	Type	Date	Description
34M	Surface	Jan 1, 2001	SOME MINES LIMITED SURFACE RIGHTS LEASE AT 1000
35M	Surface	Jan 1, 2001	SOME MINES LIMITED SURFACE RIGHTS LEASE AT 1000
36M	Surface	Jan 1, 2001	SOME MINES LIMITED SURFACE RIGHTS LEASE AT 1000
37M	Surface	Jan 1, 2001	SOME MINES LIMITED SURFACE RIGHTS LEASE AT 1000
38M	Surface	Jan 1, 2001	SOME MINES LIMITED SURFACE RIGHTS LEASE AT 1000
39M	Surface	Jan 1, 2001	SOME MINES LIMITED SURFACE RIGHTS LEASE AT 1000
40M	Surface	Jan 1, 2001	SOME MINES LIMITED SURFACE RIGHTS LEASE AT 1000
41M	Surface	Jan 1, 2001	SOME MINES LIMITED SURFACE RIGHTS LEASE AT 1000
42M	Surface	Jan 1, 2001	SOME MINES LIMITED SURFACE RIGHTS LEASE AT 1000
43M	Surface	Jan 1, 2001	SOME MINES LIMITED SURFACE RIGHTS LEASE AT 1000
44M	Surface	Jan 1, 2001	SOME MINES LIMITED SURFACE RIGHTS LEASE AT 1000
45M	Surface	Jan 1, 2001	SOME MINES LIMITED SURFACE RIGHTS LEASE AT 1000
46M	Surface	Jan 1, 2001	SOME MINES LIMITED SURFACE RIGHTS LEASE AT 1000
47M	Surface	Jan 1, 2001	SOME MINES LIMITED SURFACE RIGHTS LEASE AT 1000
48M	Surface	Jan 1, 2001	SOME MINES LIMITED SURFACE RIGHTS LEASE AT 1000
49M	Surface	Jan 1, 2001	SOME MINES LIMITED SURFACE RIGHTS LEASE AT 1000
50M	Surface	Jan 1, 2001	SOME MINES LIMITED SURFACE RIGHTS LEASE AT 1000

2.25943  
PROSP  
ASSAY



General Information and Limitations  
This map is not intended for navigation, survey, or land title administration purposes as the information shown on this map is compiled from various sources. Compensation and accuracy are not guaranteed. Additional information may be obtained through the Land Titles and Registry Office, or the Ministry of Natural Resources.





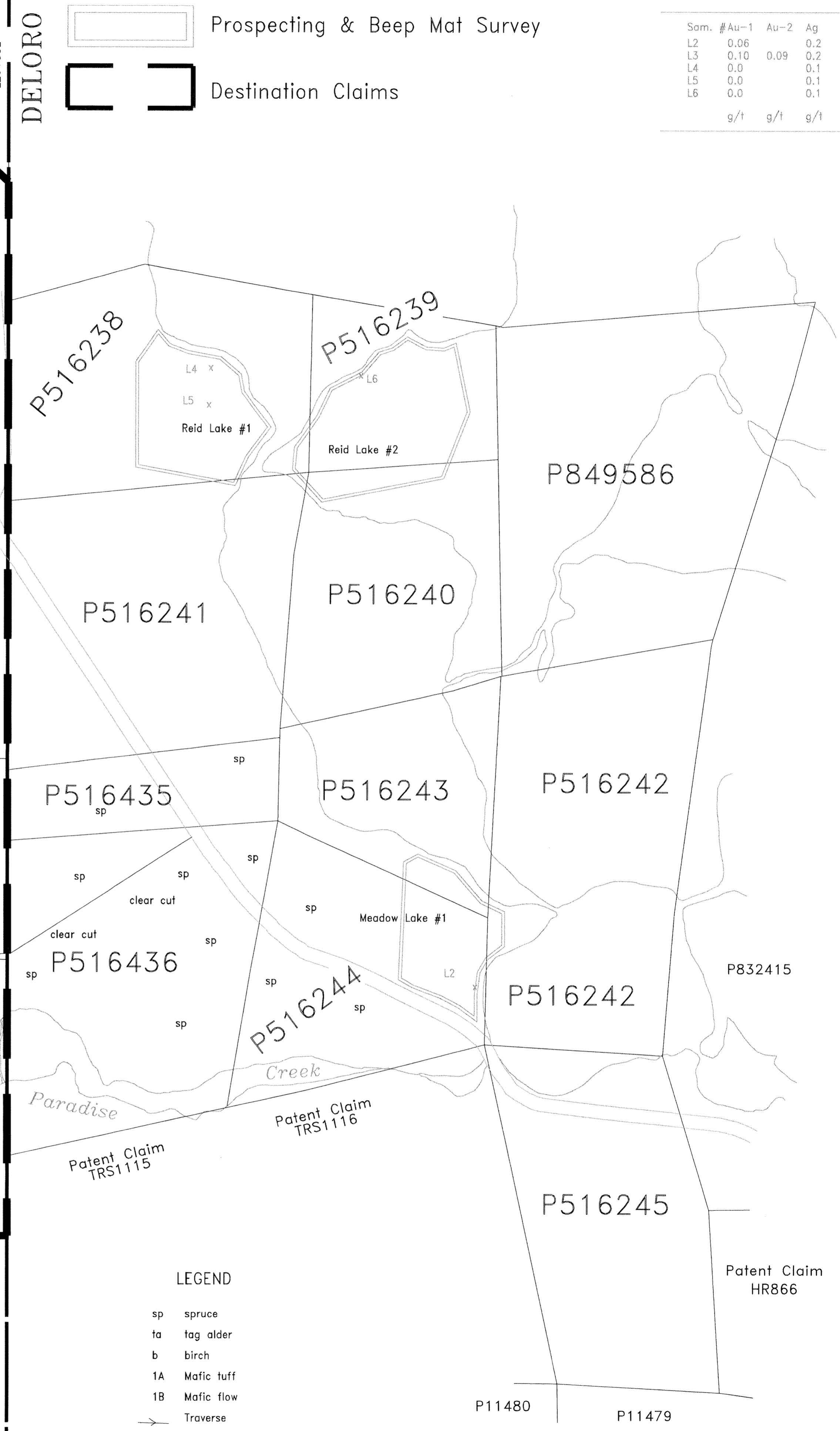
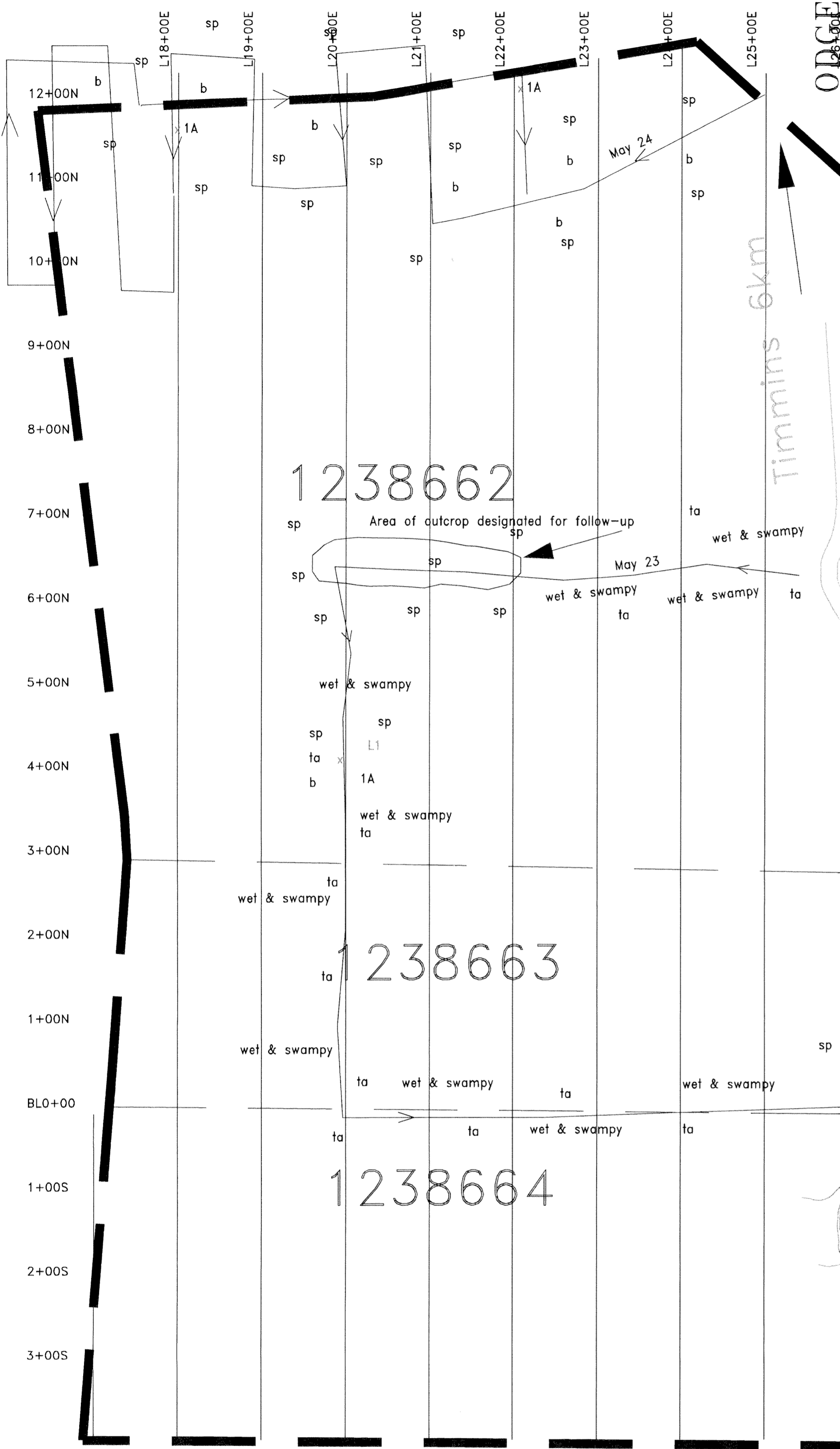
42A06NW2036 2.25943 DELORO

210

Prospecting & Beep Mat Survey

Destination Claims

Sam. #	Au-1	Au-2	Ag	Cu	Zn
L2	0.06		0.2		
L3	0.10	0.09	0.2	146	45
L4	0.0		0.1	11	24
L5	0.0		0.1		
L6	0.0		0.1	0	0
	g/t	g/t	g/t	ppm	ppm



**L.B.L. RICHGOLD MINES INC.**  
Meadow Lake Property

**2.25943** Plan Map

*Beep Mat Surveys*

List of Revisions		
No.	By:	Date:
1	BJM	Nov 95
2	BJM	Jul 03

Survey by: GJB Date: July 1986

AutoCAD by: BJM Date: Jul. 2003

Scale 1cm = 40m

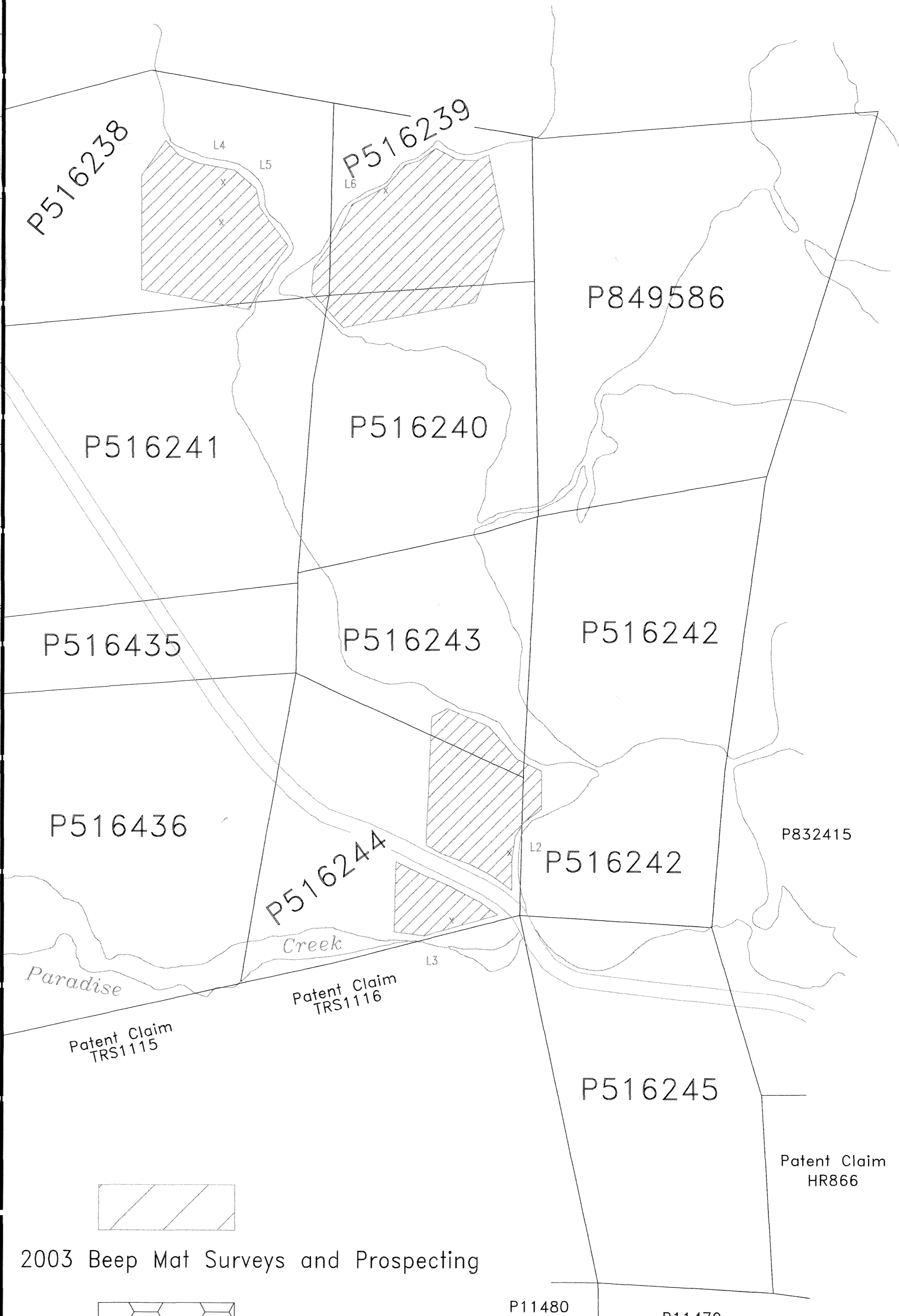
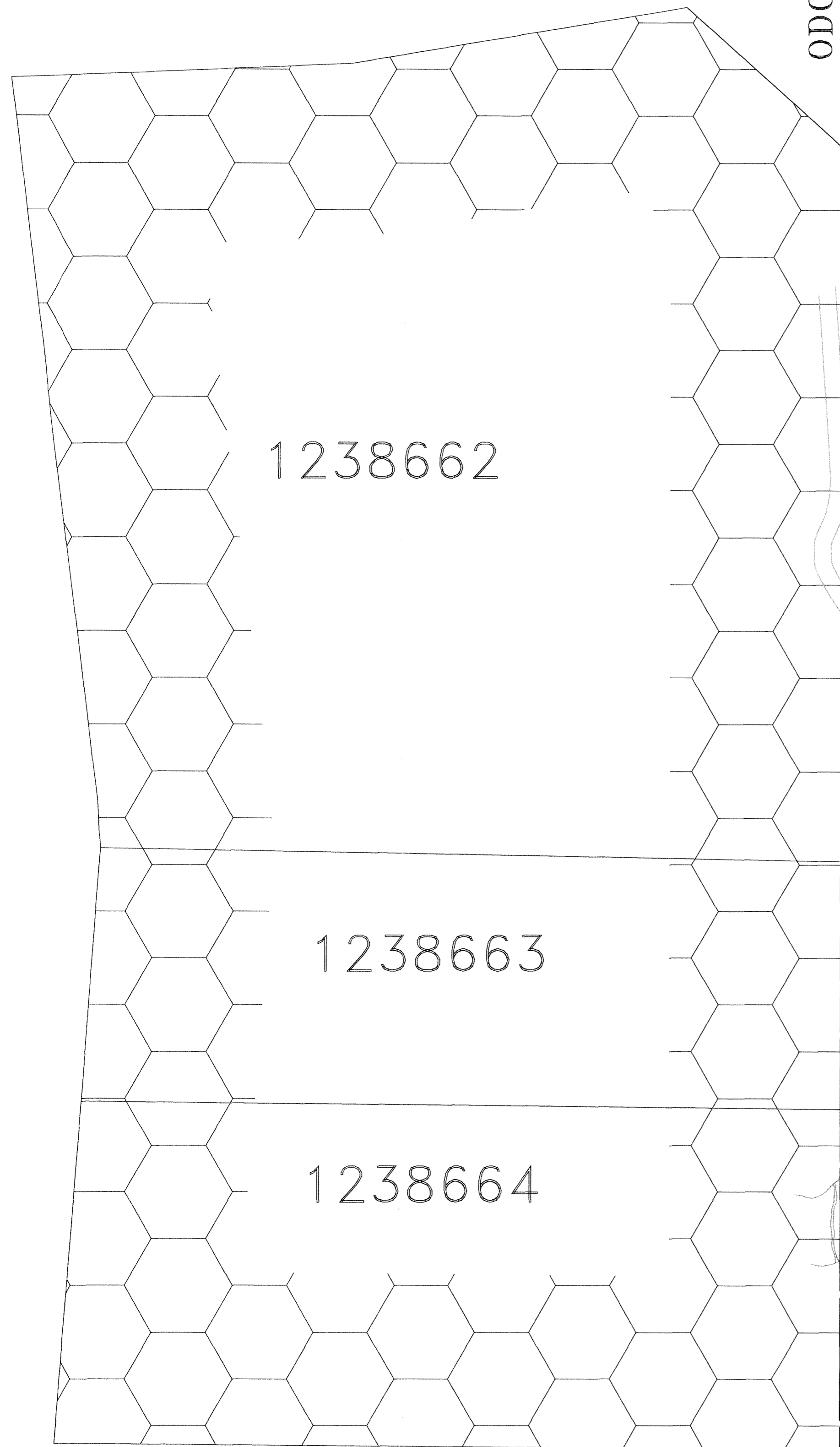
Figure: 1

**LEGEND**

- sp spruce
- ta tag alder
- b birch
- 1A Mafic tuff
- 1B Mafic flow
- Traverse

P11480 P11479

ODGEN  
DELORO



**L.B.L. RICHGOLD MINES INC.**

Meadow Lake Property  
Plan Map

*Beep Mat Surveys*

List of Revisions

Survey by: GJB	Date: July 1986
AutoCAD by: BJM	Date: Jul. 2003

No.	By:	Date:
1	BJM	Nov 95
2	BJM	Jul 03

Scale 1cm = 40m

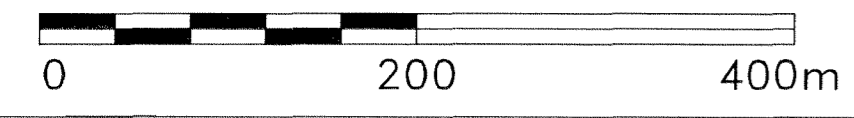
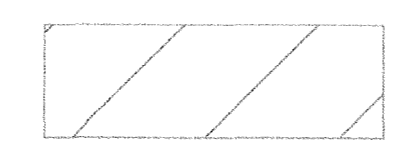
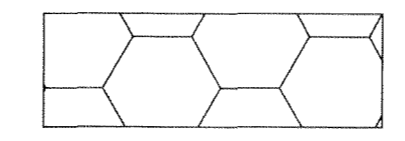


Figure: 1



2003 Beep Mat Surveys and Prospecting



Destination Claims

