



42A06NW8424 32 BRISTOL

010

DIAMOND DRILLING

Township: Bristol TWP.

Report No: 32

WORK PERFORMED FOR: Cominco LTD.

RECORDED HOLDER: SAME AS ABOVE [x]

: OTHER []

| <u>CLAIM NO.</u> | <u>HOLE NO.</u> | <u>FOOTAGE</u> | <u>DATE</u> | <u>NOTE</u> |
|------------------|-----------------|----------------|-------------|-------------|
| P - 835912 | BR87-1 | 173m | Jan/87 | (1) |
| P - 699068 | BR87-2 | 170m | Jan/87 | (1) |
| P - 835913 | BR87-6 | 170m | Jan/87 | (1) |

NOTES: (1) #43/87 (filed in July/87)

Drill Hole Record



Property BRISTOL

District EASTERN

Hole No. BR-87-1

Commenced WED JAN. 21ST/87

Location BRISTOL TOWNSHIP

Tests at 173 m (EOH)

Hor. Comp. 130m

Completed SUN JAN. 25TH/87

Core Size BQ

Corr. Dip 36°

Vert. Comp. 113m

Co-ordinates 28+00E, 19+75S

True Brg. 146° Az.

Logged by David Moore

Objective

% Recov.

Date

Claim 835912

T Brg. 146°

Collar Dip -45°

Elev.

Length 173 m

Hole No. Sheet

| Footage From To | Description | Sample No. | Length | Analysis |
|--------------------|--|---------------|--------|----------|
| 0 - 34.6 | OVERBURDEN | | | |
| 34.6 - 81.9 | MAFIC VOLCANIC | | | |
| | FINE GRAINED MEDIUM GREEN, CHLORITE-CARBONATE WITH MINOR SERICITE, CARBONATE (CALCITE & IRON DOLomite) OCCURS AS SMALL (UP TO 1cm), FLATTENED LENSES, AND AS THIN (0.5 cm) VEINLETS AT 060° TO C.A., WITH LATE TENSION VEINS AT 025° TO C.A.; LOCALLY CARBONATE + QUARTZ COMPRISES 40% OF ROCK; WEAK TO MODERATE PENETRATIVE FABRIC; TRACE DISSEMINATED PYRITE | | | |
| 35.8 - 35.9 | -- IRON CARBONATE STAINING IN MORE FOLIATED, CHLORITE SECTION | | | |
| 36.8 - 37.0 | -- 3-5 mm, FOLIATION PARALLEL (060° TO C.A.), DISCONTINUOUS CARBONATE-QUARTZ VEINS COMPRISE 40% OF SECTION | | | |
| 37.1 - 37.4 | -- INTENSE IRON CARBONATE STAINING IN STRONGLY FOLIATED, CHLORITIC SECTION | | | |
| 39.5 - 39.6 | -- EXTREMELY WEATHERED, RUSTY, HEARTITE/LIMONITE | | | |
| 44.2 - 44.6 | -- WEATHERED OUT. CARBONATE VEINS AND LENSES, IRON CARBONATE, STAINING | | | |
| 44.7 - 44.8 | -- IRON CARBONATE STAINING | | | |
| 45.2 - 45.7 | -- ABUNDANT VEINS AND FLATTENED (1:3) CARBONATE LENSES (3mm WIDE) OFTEN WEATHERED OUT. | | | |
| 46.3 - 47.5 | : MORE SERICITE-RICH SECTION. -- FINE TO MEDIUM GRAINED, TAN, CHLORITE CARBONATE-SERICITE, CARBONATE OCCURS AS SMALL LENSES AND VEINS (AS ABOVE) AND IN MATRIX; WEAK FOLIATION AT 060° TO C.A. | | | |

 ONTARIO GEOLOGICAL SURVEY
 RESEARCH OFFICE

MAR 18 1987

RECEIVED

Scale

Colour Plot
& Dip

Drill Hole Record



| | | | |
|--------------|-----------|-------------------------|-------------|
| Property | District | Hole No. <i>BR-87-1</i> | |
| Commenced | Location | Tests at | Hor. Comp. |
| Completed | Core Size | Corr. Dip | Vert. Comp. |
| Co-ordinates | | True Brg. | Logged by |
| Objective | | % Recov. | Date |

| | | | | | |
|-------|--------|------------|-------|--------|----------|
| Claim | T Brg. | Collar Dip | Elev. | Length | Hole No. |
|-------|--------|------------|-------|--------|----------|

| Footage From | To | Description | Sample No. | Length | Analysis | | | | | |
|-----------------|----|---|---------------|--------|----------|--|--|--|--|--|
| | | | | | | | | | | |
| | | <i>48.8-53.1 -- MORE FOLIATED CHLORITE-CARBONATE ROCK WITH CARBONATE ± QUARTZ STRINGERS (1 PER CM) AND UP TO 10% 1cm STRETCHED CARBONATE LENSES</i> | | | | | | | | |
| | | <i>53.1-54.8 -- LIGHT GREEN-GREY, MEDIUM GRAINED, WEAKLY FOLIATED CHLORITIC SECTION WITH ABUNDANT QUARTZ FILLED FOLIATION PARALLEL FRACTURES AND PODS</i> | | | | | | | | |
| | | <i>55.1-55.4 -- BROKEN CORE, INTENSELY WEATHERED</i> | | | | | | | | |
| | | <i>57.8-64.9 -- LIGHT GREEN-GREY, FINE TO MEDIUM GRAINED CHLORITE-CARBONATE ROCK WITH LOCALLY ABUNDANT QUARTZ-FILLED FRACTURES AND LENSES WITH 1-2% DISSEMINATED PYRITE</i> | | | | | | | | |
| | | <i>65.3-65.7 -- VUGGY WEATHERED</i> | | | | | | | | |
| | | <i>66.1-67.7 -- FLATTENED (1:3) CARBONATE ± QUARTZ LENSES (7-10mm WIDE) COMPRISE 10% OF ROCK</i> | | | | | | | | |
| | | <i>68.1-68.7 -- 20% QUARTZ FILLED FRACTURES AND LENSES</i> | | | | | | | | |
| | | <i>69.4-69.9 -- VUGGY, WEATHERED</i> | | | | | | | | |
| | | <i>70.0-71.2 -- DARK QUARTZ ± CARBONATE FILLED FRACTURES (040°) AND PODS COMPRISE UP TO 20% OF WEAKLY FOLIATED ROCK</i> | | | | | | | | |
| | | <i>71.2-72.8 -- DARK GREEN, FINE GRAINED MASSIVE CHLORITE-CARBONATE ROCK, VUGGY</i> | | | | | | | | |
| | | <i>72.8-73.1 -- DARK QUARTZ ± CARBONATE FRACTURES AND PODS; INCLUDES 3cm MILKY Q.V.</i> | | | | | | | | |
| | | <i>74.2-75.1 -- QUARTZ-CARBONATE PODS (<1cm) LOCALLY COMPRISE 10% OF WEAKLY FOLIATED CHLORITE-CARBONATE ROCK.</i> | | | | | | | | |
| | | <i>75.3-75.4 -- IRON CARBONATE STAINING</i> | | | | | | | | |
| | | <i>75.7-76.4 -- SMALL (<1cm) QUARTZ-CARBONATE PODS, SOME REPLACED BY PYRITE</i> | | | | | | | | |
| | | <i>76.4-76.9 -- QUARTZ-CARBONATE BANDS, LOCALLY COMPRISE UP TO 40% OF MODERATELY FOLIATED ROCK</i> | | | | | | | | |

Drill Hole Record



| | | |
|--------------|-----------|------------------|
| Property | District | Hole No. BR-87-1 |
| Commenced | Location | Tests at |
| Completed | Core Size | Hor. Comp. |
| Co-ordinates | | Corr. Dip |
| Objective | | True Brg. |
| | | Logged by |
| | | % Recov. |
| | | Date |

Claim

T Brg.

Collar Dip

Elev.

Length

Hole No.

Sheet

| Footage From | To | Description | Sample No. | Length | Analysis | | | | | |
|-----------------|-------|---|---------------|--------|----------|--|--|--|--|--|
| | | 76.9 - 77.5 -- DARK QUARTZ EYES IN CHLORITE, CARBONATE MATRIX | | | | | | | | |
| | | 77.5 - 77.8 -- IRON STAINING | | | | | | | | |
| | | 77.8 - 78.5 -- GROUND CORE, VUGGY, WEATHERED | | | | | | | | |
| | | 81.3 - 81.9 -- ALTERATION IRON STAINED BANDS & TAN AND LIGHT GREEN CHLORITE-CARBONATE BANDS; MODERATELY FOLIATED 060° TO C.A. | | | | | | | | |
| 81.9 | 173.0 | SEDIMENT | | | | | | | | |
| | | (SILTY GREYWACKE -- | | | | | | | | |
| 81.9 | 92.5 | TAN TO LIGHT GREEN FINE TO MEDIUM GRAINED, SERICITE-CHLORITE-CARBONATE ROCK WITH QUARTZ-RICH LAYERS; QUARTZ OCCURS WITH FINE GRAINED PYRITE (UPTO 4%) IN BANDS AND DISCONTINUOUS VEINLETS; CARBONATE & QUARTZ OCCURS AS PADS AND FOLIATION PARALLEL BANDS (1-2 CM WIDE) COMPRISING UPTO 10% OF ROCK; WEAK TO MODERATE PENETRATIVE FABRIC 060° | | | | | | | | |
| | | 88.3 - 88.8 -- FINE TO MEDIUM GRAINED SERICITE CHLORITE BAND WITH SMALL (<1 CM) PYRITE LENSES COMPRISING 3-4% OF SECTION | | | | | | | | |
| | | 90.2 - 90.8 -- PYRITE LENSES (UPTO 1 CM) IN WEAKLY FOLIATED ROCK CUT BY 2 DARK, 1 CM QUARTZ VEINS (025° TO C.A.) | | | | | | | | |

Scale

Colour Plot
& Dip

Drill Hole Record



| | | | | | | | | | |
|--------------|-----------|------------------|-------------|-------|--------|------------|-------|--------|----------|
| Property | District | Hole No. BR-87-1 | | Claim | T Brg. | Collar Dip | Elev. | Length | Hole No. |
| Commenced | Location | Tests at | Hor. Comp. | | | | | | |
| Completed | Core Size | Corr. Dip | Vert. Comp. | | | | | | |
| Co-ordinates | | True Brg. | Logged by | | | | | | |
| Objective | | % Recov. | Date | | | | | | |

| Footage | | Description | Sample No. | Length | Analysis | | | | |
|---------|-------------|---|------------|--------|----------|--|--|--|--|
| From | To | | | | | | | | |
| 92.5 | 95.0 | LAPILLI TUFF -- SECTION IS 50% FRAGMENTS; MODERATE TO STRONG FOLIATION IN CHLORITIC MATRIX HOSTING FLATTENED (1:3) FRAGMENTS (UP TO 1 CM WIDE); INTERLAYERED TUFF/LAPILLI TUFF/AGGLOMERATE/SILICIFIED LAYERS OF VARYING WIDTHS; PYRITE OCCURS AS FINE GRAINED DISSEMINATIONS (1-2% OF MATRIX); ALONG CHLORITE SLIPS IN SILICIFIED LAYERS (5-10%); AND AS 1-2 MM WIDE PODS AND LENSES (5%); CARBONATE OCCURS AS BANDS AND STRINGERS. | | | | | | | |
| | 94.7-95.0 | FAULT GOUGE | | | | | | | |
| 95.0 | 140.0 | INTERLAYERED GREYWACKE AND ARGILLITE | | | | | | | |
| | 95.0-98.5 | GREYWACKE: WITH UP TO 5% PYRITE | | | | | | | |
| | 98.0-103.3 | GREYWACKE > ARGILLITE (: WITH 1 CM WIDE MOTTLED QUARTZ VEIN (1 PER M) CONTAINING 5% PYRITE (0.25° TO 0.9°) | | | | | | | |
| | 103.3-109.5 | ARGILLITE > GREYWACKE: WITH DARK 2 CM WIDE QUARTZ VEIN (CONTAINING 30% PY. OVER 2 CM IN WALL ROCK; SOME CARBONATE STRINGERS | | | | | | | |
| | 109.5-113.1 | GREYWACKE > ARGILLITE: WEAK TO MODERATE FABRIC | | | | | | | |
| | 113.1-121.3 | ARGILLITE: GRAPHITIC 117.1-117.6, 120.0-120.3; 4 BANDS TOTALLING 12 CM. AVERAGE 60% PYRITE (119.0-119.8) | | | | | | | |

Drill Hole Record



Property

District

Hole No. BR-87-1

Commenced

Location

Tests at

Hor. Comp.

Completed

Core Size

Corr. Dip

Vert. Comp.

Co-ordinates

True Brg.

Logged by

Objective

% Recov.

Date

Claim

T Brg.

Collar Dip

Elev.

Length

Sheet
Hole No.

Footage

Description

Sample
No.

Length

Analysis

From To

121.3-129.4 -- GREYWACKE: WITH NARROW (5 CM) LAPILLI TUFF BAND AT 123.9 10 CM MOTTLED

MILKY QUARTZ VEIN AT 025° TO G.A.: BRECCIATED ALONG SELVAGES AND FILLED

BY PYRITE, PYRRHOTITE, LOCALLY COMPRISING UP TO 20%; GRAPHITIC (125.0-125.7)

129.4-140.0 -- PYRITIC ARGILLITE: LOCALLY UP TO 40% COARSE GRAINED PYRITE AVEIRAGES

10-15% PYRITE; ROCK IS DARK FINE GRAINED WITH CARBONATE

STRINGERS AT 025° TO G.A., SOME PYRITE ASSOCIATED WITH THESE STRINGERS

140.0-147.5 LAPILLI TUFF

TAN, LIGHT GREEN FRAGMENTS IN A CARBONATE-CHLORITE PYRITE MATRIX; FRAGMENTS ARE
FLATTENED (132)° PYRITE IS ASSOCIATED WITH CARBONATE BANDS (1 PER CM)

144.0 -- 60% PYRITE ALONG 1/2 CM CARBONATE BAND

146.3 -- CARBONATE-PYRITE BRECCIA (?)

146.7-146.9 -- BRECCIA, NO PYRITE

146.9 -- 1 CM FAULT GOUGE

147.5-173.0 GREYWACKE

GREEN, MEDIUM GRAINED, CARBONATE-RICH; CARBONATE OFTEN FILLS FRACTURE AT 025° AND
OCCURS AS 1 CM BANDS (1 PER M.); FELSITE DYKES (1-20 CM WIDE) CUT GREYWACKE AT
168-170 m (2-3 PER M).

Scale

Colour Plot & Dips

Drill Hole Record



| | | | |
|--------------|-----------|-------------------------|-------------|
| Property | District | Hole No. <i>BR-87-1</i> | |
| Commenced | Location | Tests at | Hor. Comp. |
| Completed | Core Size | Corr. Dip | Vert. Comp. |
| Co-ordinates | | True Brg. | Logged by |
| Objective | | % Recov. | Date |

| | | | | | | |
|-------|--------|------------|-------|--------|----------|-------|
| Claim | T Brg. | Collar Dip | Elev. | Length | Hole No. | Sheet |
|-------|--------|------------|-------|--------|----------|-------|

| Footage | | Description | Sample No. | Length | Analysis | | | | |
|---------------------|----|---|------------|--------|----------|--|--|--|--|
| From | To | | | | | | | | |
| <i>173</i> | | <i>END OF HOLE</i> | | | | | | | |
| <i>0 - 34.6</i> | | <i>OVERBURDEN</i> | | | | | | | |
| <i>34.6 - 81.9</i> | | <i>MAFIC VOLCANIC</i> | | | | | | | |
| <i>81.9 - 173.0</i> | | <i>SEDIMENTS -- INCLUDING 10.4 m OF PYRITIC GRANITE ARGILLITE (CONDUCTOR)</i> | | | | | | | |
| | | | | | | | | | |
| | | | | | | | | | |
| | | | | | | | | | |
| | | | | | | | | | |
| | | | | | | | | | |
| | | | | | | | | | |
| | | | | | | | | | |
| | | | | | | | | | |
| | | | | | | | | | |
| | | | | | | | | | |
| | | | | | | | | | |
| | | | | | | | | | |
| | | | | | | | | | |
| | | | | | | | | | |
| | | | | | | | | | |
| | | | | | | | | | |
| | | | | | | | | | |
| | | | | | | | | | |
| | | | | | | | | | |

DIAMOND DRILL RECORD

NAME OF PROPERTY BRISTOL
 HOLE NO. BR-87-2 LENGTH 170m
 LOCATION BRISTOL TWP. 24+00E 3+00S
 LATITUDE _____ DEPARTURE _____
 ELEVATION _____ AZIMUTH 146° DIP _____
 STARTED Jan. 25, 1987 FINISHED Jan. 27, 1987

| FOOTAGE | DIP | AZIMUTH | FOOTAGE | DIP | AZIMUTH |
|---------|------|---------|---------|-----|---------|
| 170m | -45° | 146° | | | |
| | | | | | |
| | | | | | |
| | | | | | |

HOLE NO. BR-87-2 SHEET NO. 1

REMARKS _____

LOGGED BY Jarvis D. Meek

| FOOTAGE | | DESCRIPTION | SAMPLE | | | | ASSAYS | | | | | |
|---------|------|---|--------|-------------|---------|----|--------|---|---|--------|--------|--|
| FROM | TO | | NO. | % SULPHIDES | FOOTAGE | | | % | % | OZ/TON | OZ/TON | |
| | | | | | FROM | TO | TOTAL | | | | | |
| 0 | 22.0 | OVERBURDEN | | | | | | | | | | |
| 22.0 | 62.7 | MAFIC VOLCANIC Dark green, fine grained, chlorite-calcite + sericite, moderate to strong foliation 050° to core axis; carbonate bands parallel to sub parallel to foliation, deformed calcite stringers locally comprise 20% of rock; coarse grained (2-3 up to 6mm) disseminated euhedral pyrite (1% of rock); late calcite stringers 20°-30° to core axis; | | | | | | | | | | |
| 22.0 | 27.1 | Chlorite-Carbonate Schist - very schistose, shaley, strong foliation 050° to core axis. 24.1-24.2 - quartz-carbonate vein, foliation parallel, brecciated, trace pyrite, cut by late, 1 cm wide carbonate vein (010° to core axis) containing pyrite aggregates in wallrock. | | | | | | | | | | |
| 27.1 | 27.6 | Sericite-Schist - tan-gray, fine grained, weakly carbonated, moderate foliation 050° to core axis with 1-2% disseminated pyrite. | | | | | | | | | | |
| 27.6 | 29.6 | Chlorite-Schist - similar to 22.0-27.1 but less carbonate 27.7-28.1 - 4, 2cm quartz bands with brown carbonate. 28.8 - 5cm-chert textured quartz-carbonate vein. 29.0-29.6 - bleached section, tan, weak carbonate, no pyrite. | | | | | | | | | | |
| 29.6 | 32.7 | Chlorite-Carbonate Schist - numerous foliation parallel carbonate veinlets with 1% disseminated pyrite throughout; strong foliation 050°; 29.6-29.7 - rusty carbonate, very very reactive to HCl 29.8 - quartz-carbonate vein with tourmaline, rusty-brown & white carbonate. 30.3-30.6 - 3 quartz-carbonate vein 5-8cm wide, foliation parallel, trace tourmaline 32.0-32.3 - sericite-rich section, schistose | | | | | | | | | | |

LANGRIDGES - TORONTO - 366-1168

DIAMOND DRILL RECORD

NAME OF PROPERTY BRISTOL

HOLE NO. BR-87-2 SHEET NO. 2

| FOOTAGE | | DESCRIPTION | SAMPLE | | | ASSAYS | | | | | |
|---------|------|--|--------|-----------------|---------|--------|-------|---|---|--------|--------|
| FROM | TO | | NO. | % SULPH IDES | FOOTAGE | | | % | % | OZ/TON | OZ/TON |
| | | | | | FROM | TO | TOTAL | | | | |
| 32.7 | 40.8 | Alternating Sericite Schist/Chlorite Schist - carbonate-rich with fine grained pyrite throughout, and carbonate-quartz bands (3mm wide) foliation parallel. 36.8 - 1cm carbonate-quartz vein (005°) cut by two conjugate veins at 040° and 060°. | | | | | | | | | |
| 40.8 | 50.1 | Sericite Schist - tan, fine grained, sericite with some carbonate-rich bands in moderate to strongly foliated rock; locally pyrite occurs as foliation parallel lenses; carbonate-chlorite-rich sections (41.9-42.3; 47.2-48.5, 49.4-49.9); 1-3cm foliation parallel quartz and/or carbonate veins contain trace to 2% pyrite and tourmaline; pyrite lenses often occur in wallrock to these veins. | | | | | | | | | |
| 50.1 | 62.7 | Chlorite-Carbonate Schist - abundant carbonate alteration has over-printed schistose texture producing a weakly foliated appearance; calcite occurs as oval pods; tourmaline needles occur in more sericite-rich sections (i.e. 52.5m); locally coarse grained (2-5mm) euhedral pyrite (1-2% of rock). | | | | | | | | | |
| 62.7 | 98.2 | <u>RHYOLITE</u> Very light green, fine grained, moderately to strongly foliated (060°) quartz eye rhyolite; quartz-eyes, blue-gray, round to sub-round, 0.5mm, comprise up to 5% of rock; alterations chlorite/sericite bands vary from 3 to 10 cm wide; lighter bands are more siliceous, quartz phyric with dark chlorite bands; bands of calcite 1-3mm wide locally comprise 10% of rock; carbonate veins are parallel to subparallel to foliation, late calcite-filled fractures 010° to core axis often offset 1-2mm on foliation; coarse grained disseminated, pyrite, subhedral, trace to 1%; 62.7-63.2 - upto 5% pyrite aggregates 68.4-68.5 - 10-15% foliation parallel pyrite lenses & layers in strongly foliated rock. 71.3-71.5 - lighter, fine grained tuffaceous layer. 74.9-75.2 - lapilli tuff; flattened (1:2) fragments 1-2mm wide 77.6-77.9 - milky quartz vein with 6-8% tourmaline aggregates (3x2cm) with 2-3% pyrite; 030° to core axis. | | | | | | | | | |

LANGRIDGES - TORONTO - 366-1168

DIAMOND DRILL RECORD

NAME OF PROPERTY BRISTOL

HOLE NO. BR-87-2 SHEET NO. 3

| FOOTAGE | | DESCRIPTION | SAMPLE | | | ASSAYS | | | | | |
|---------|-------|--|--------|-------------|---------|--------|-------|---|---|--------|--------|
| FROM | TO | | NO. | % SULPHIDES | FOOTAGE | | | % | % | OZ/TON | OZ/TON |
| | | | | | FROM | TO | TOTAL | | | | |
| | | 80.7 - 6cm milky quartz vein (040°) with pyrite (3-5%) along vein margin and in adjacent wallrock; arsenopyrite (2x3mm) aggregate 81.6-82.2 - 20cm of 25% pyrite aggregates in wallrock and 12cm wide quartz vein, section is 30% quartz veins (030°, 045°) in moderately foliated rock (050°) with 1-2% pyrite 82.2-84.9 - 1cm quartz ± carbonate vein (010°, 050°) 3 per m in weakly foliated rock. | | | | | | | | | |
| 87.7 | 93.9 | Lapilli Tuff - intercalated dark tuffaceous layers and tan rhyolite with quartz ± carbonate vein (050°) vary from 1-8cm wide (1 per m) 93.9-98.2 - large (2-3mm) quartz eyes, less tuffaceous but still some interlayering in weakly foliated rhyolite; carbonate porphyroblasts (97.2-98.2); | | | | | | | | | |
| 98.2 | 117.9 | <u>MAFIC VOLCANIC</u> Chlorite-carbonate schist - similar to 50.1 to 62.7 98.2-100.5 - flow top texture (?), weakly carbonate, trace tourmaline 100.5-117.9 - carbonate bands (10% of section) vary from 1mm to 2cm, average 3mm; 1% disseminated pyrite; locally sericite-rich sections) rusty carbonate-rich band (102.2-102.5, 104.2-104.3). | | | | | | | | | |
| 117.9 | 120.0 | <u>RHYOLITE</u> Similar to 62.7-98.2; locally extremely calcareous (118.9-119.1) | | | | | | | | | |
| 120.0 | 170.0 | <u>MAFIC VOLCANIC</u> Similar to 22.0-62.7 126.2 - 3mm dark green acicular crystals associated with coarse grained pyrite, green tourmaline? Fragmental - flattened (6:1) sericite ± calcite ± quartz ± feldspar? light green, fine grained with feathery edges, average 0.5cm wide in dark green chloritic matrix; 60:40 matrix:clasts; 120.0-120.3; 121.5-122.2; 125.9-126.3 133.4-133.6 - grey-green, <0.5mm, dolomite porphyroblasts comprise 25% of rock. | | | | | | | | | |

LANGRIDGES - TORONTO - 366-1168

DIAMOND DRILL RECORD

NAME OF PROPERTY BRISTOL
 HOLE NO. BR-87-2 SHEET NO. 4

| FOOTAGE | | DESCRIPTION | SAMPLE | | | ASSAYS | | | | | |
|---------|-------|---|--------|-----------------|---------|--------|-------|---|---|--------|--------|
| FROM | TO | | NO. | % SULPH 10ES | FOOTAGE | | | % | % | OZ/TON | OZ/TON |
| | | | | | FROM | TO | TOTAL | | | | |
| 137.6 | 140.0 | <p>Bleached Mafic Volcanic(?) - mottled light to dark green-buff, fine grained, massive to very weakly foliated; brecciated and crackled texture rock with dark quartz-calcite-chlorite fill. fractures, pods; hairline to 3cm wide fractures have bleached buff broad alteration halo's up to 1cm wide of sericite ± albite ± quartz, fine grained pyrite (1-2%) in halo; "matrix" to veins and halos consists of dark chlorite with 0.5-1mm cream coloured euhedral dolomite (up to 30% of rock); fractures are generally subparallel to foliation but locally develop into small scale stockworks.</p> <p>137.6-139.9 - chlorite - dolomite porphyroblastic rock 139.9-144.6 - pseudo fragmental, bleached fragments 144.6-145.1 - milky, coarse grained quartz with 5% coarse grained creamy freeoan calcite; 2% black tourmaline aggregates and seams on vein margins; wallrock is intensely carbonated 5-10cm wide.</p> | | | | | | | | | |
| 146.0 | 170.0 | <p>Basalt (?) - dark to light green, fine grained, massive to weakly foliated, chlorite-calcite massive to weakly foliated (050°); carbonate pervasive as well as stringers.</p> <p>146.0-147.1 - transitional from previous bleached zone, less calcite 147.9-148.6 - chlorite-dolomite prophyroblastic rock, 25% 1mm euhedral in weakly foliated chlorite matrix. 150.7-151.1 - discontinuous quartz ± carbonate veins and pods with dolomite porphyroblast. 155.1-155.2 - deformed carbonate band in strongly foliated shear band 157.9-158.8 - numerous carbonate-quartz bands and pods, deformed, sheared, 1cm aphanitic siliceous frac-ures (pillow selvages?) 161.0-170.0 - transitional to light grey-green weakly foliated, weak poprhyroblastic (162.5); more quartz, feldspar 1x3cm frags. (168.5-170.0).</p> | | | | | | | | | |
| | 170.0 | End of Hole | | | | | | | | | |

LANGRIDGES - TORONTO - 366-1168

Drill Hole Record



Property BRISTOL District EASTERN Hole No. BR-87-6
 Commenced FEB. 4th/87 Location BRISTOL TOWNSHIP Tests at 170 m Hor. Comp. 126m
 Completed FEB 6th/87 Core Size BQ Corr. Dip -39° Vert. Comp. 114m
 Co-ordinates TL245, 26100E True Brg. 155° Logged by David Moore
 Objective % Recov. Date FEB 7th/87

Claim P 835913
 T Brg. 155°
 Collar Dip -45°
 Elev.
 Length 170m
 Hole No. Sheet

| Footage | | Description | Sample No. | Length | Analysis | | | | | |
|---------|-------|---|------------|--------|----------|--|--|--|--|--|
| From | To | | | | | | | | | |
| 0 | 35.0 | OVERBURDEN | | | | | | | | |
| 35.0 | 170.0 | <p>QUARTZ FELDSPAR PORPHYRY</p> <p>SILICEOUS; LIGHT-GRAY, PINK ANGULAR TO SUBROUNDED PHENOCRYSTS (3-15mm, AVERAGE 10mm) OF QUARTZ & FELDSPAR IN A DARK TO LIGHT GREEN TO BUFF COLLOID MATRIX OF FINE GRAINED FELDSPAR, QUARTZ, CHLORITE AND SERICITE, PHENOCRYSTS COMPRISE 50-60% OF ROCK; LOCALLY WEAK CARBONATE ALTERATION OCCURS ON RIMS OF FELDSPAR PHENOCRYSTS (I.C. 35.0-45.0m); TOURMALINE OCCURS ALONG FRACTURE PLANES (045° TO C.A.) AS COARSE (2-4mm) NEEDLES AND MASSIVE TO SEMI-MASSIVE PYRITIC 1-3mm WIDE STRINGERS; TOURMALINE ALSO OCCURS ALONG QUARTZ + CARBONATE VEIN SELVAGES; ROCK IS GENERALLY WEAKLY TO MODERATELY FOLIATED BUT VARIES FROM MASSIVE, UNFOLIATED TO NARROW STRONG AND INTENSELY FOLIATED BANDS COMPOSED OF ROTATED AND ROUNDED QUARTZ PHENOCRYSTS WITH FELDSPAR PHENOCRYSTS WIRED OUT AND DESTROYED; TRACE FINE PYRITE OCCURS THROUGHOUT SECTION;</p> | | | | | | | | |
| 35.0 | 46.7 | <p>GREY QFP; GRAY & PINK PHENOCRYSTS IN A DARK GREEN MATRIX OF SERICITE FELDSPAR, CHLORITE; WEAK FOLIATION (045° TO C.A.); 2-3mm TOURMALINE NEEDLES ON FRACTURE SURFACES; LOCALLY CARBONATE RIMS ON FELDSPAR PHENOCRYSTS CARBONATE STRINGERS VARY BUT GENERALLY CUT C.A. AT 025°; SEVERAL FAULT GOUGE SLIPS NEAR END OF SECTION;</p> | | | | | | | | |

Drill Hole Record



| | | | |
|--------------|-----------|-------------------------|-------------|
| Property | District | Hole No. <i>BR-87-6</i> | |
| Commenced | Location | Tests at | Hor. Comp. |
| Completed | Core Size | Corr. Dip | Vert. Comp. |
| Co-ordinates | | True Brg. | Logged by |
| Objective | | % Recov. | Date |

| | | | | | |
|-------|--------|------------|-------|--------|----------|
| Claim | T Brg. | Collar Dip | Elev. | Length | Hole No. |
|-------|--------|------------|-------|--------|----------|

| Footage | | Description | Sample No. | Length | Analysis | | | | |
|---------|----|--|------------|--------|----------|--|--|--|--|
| From | To | | | | | | | | |
| | | <i>46.7-47.4 -- HANGING WALL ALTERATION TO MAFIC DYKE: BLOCKY, BUFF, FINE GRAINED STRONGLY FOLIATED (040° TO C.A.); CONTAINS NO PHENOCRYSTS; UP TO 20% FINE (2 mm.) TOURMALINE NEEDLES ON FRACTURE SURFACES;</i> | | | | | | | |
| | | <i>47.4-47.7 -- MAFIC DYKE (?) -- GREY, MEDIUM GRAINED, 50% FELDSPAR IN FINE GREEN, CHLORITIC GROUNDMASS; CUTS Q.F.P. AT 025° (TO C.A.); CONTAINS 3 CM WIDE MASSIVE GREY FELDSPAR CORE;</i> | | | | | | | |
| | | <i>47.7-47.8 -- FOOTWALL ALTERATION: SIMILAR TO 46.7-47.4</i> | | | | | | | |
| | | <i>47.8-54.6 GREY Q.F.P.: WEAK FOLIATION (045° TO C.A.); INCLUDES 10% FINE GRAINED FELDSPAR PHENOCRYSTS THROUGHOUT MOST OF SECTION;</i> | | | | | | | |
| | | <i>48.0 -- 2 CM WIDE QUARTZ VEIN, PERPENDICULAR TO FOLIATION (045° TO C.A.)</i> | | | | | | | |
| | | <i>48.4-48.6 -- 1 CM WIDE MASSIVE FINE GRAINED CARBONATE VEIN, 060° (TO C.A.) PERPENDICULAR TO FOLIATION OVERLYING 2 CM QUARTZ-TOURMALINE VEIN (045°) CONTAINING 15% TOURMALINE ALONG VEIN SALVAGES;</i> | | | | | | | |
| | | <i>50.4-50.6 -- 3 CM BARREN QUARTZ VEIN (025° TO C.A.) OVERLYING 10 CM QUARTZ POC CONTAINING 15% MASSIVE TOURMALINE</i> | | | | | | | |
| | | <i>50.9 -- 2 CM WIDE CARBONATE QUARTZ VEIN (020° TO C.A.) WITH 25% MASSIVE TOURMALINE ALONG VEIN SALVAGES; FINE PYRITE</i> | | | | | | | |
| | | <i>51.6 -- 2 CM QUARTZ VEIN (010° TO C.A.)</i> | | | | | | | |
| | | <i>52.5 -- 3 CM QUARTZ VEIN (045° TO C.A.) PERPENDICULAR TO FOLIATION</i> | | | | | | | |

Drill Hole Record



| | | | |
|--------------|-----------|-------------------------|-------------|
| Property | District | Hole No. <u>BR-87-6</u> | |
| Commenced | Location | Tests at | Hor. Comp. |
| Completed | Core Size | Corr. Dip | Vert. Comp. |
| Co-ordinates | | True Brg. | Logged by |
| Objective | | % Recov. | Date |

| Footage | | Description | Sample No. | Length | Analysis | | | | | |
|---------|-------------|--|------------|--------|----------|--|--|--|--|--|
| From | To | | | | | | | | | |
| 54.6 | 62.9 | DARK GREY Q.F.P.: MASSIVE TO WEAKLY FOLIATED; 1-3 MM CARBONATE VEINS (045° TO CA) (1 PER M); LOCALLY 5-10% TOURMALINE ON FRACTURE SURFACES (1P. 52.5, 59.3) 030° (TO C.A.); | | | | | | | | |
| | 58.8 | -- 4 MM MASSIVE TOURMALINE VEIN 030° (TO C.A.) | | | | | | | | |
| | 58.9 | -- 3 MM WEATHERED (DISSOLVED?) CARBONATE VEIN 010° (TO C.A.) | | | | | | | | |
| | 60.4 - 61.1 | -- SECTION IS 60% QUARTZ ± CARBONATE VEINS AT 045° (TO CA); CONTAIN WALLROCK INCLUSIONS; CARBONATE WEATHERED (DISSOLVED?) OUT; TOURMALINE STRINGERS ALONG VEIN SALVAGES COMPRISE UP TO 10% OF VEIN; | | | | | | | | |
| | 62.9 - 75.1 | HEMATITIC Q.F.P.: REDDISH MODERATE TO STRONGLY FOLIATED AT 050° (TO C.A.); BROAD GRADATIONAL CONTACT WITH OVERLYING AND UNDERLYING SECTIONS; LOCAL SHEARING HAS DESTROYED FELDSPAR PHENOCRYSTS AND FLATTENED QUARTZ PHENOCRYSTS, A FEW CARBONATE BANDS (1-3 MM WIDE) AND MASSIVE TOURMALINE SETS (1-2 MM WIDE) (1 EACH PER M.) | | | | | | | | |
| | 63.2 - 63.3 | -- CARBONATE RICH SECTION | | | | | | | | |
| | 75.1 - 95.3 | GREY Q.F.P.: MASSIVE TO MODERATELY FOLIATED; (CLOUDY APPEARANCE); LOCALLY UP TO 5% TOURMALINE NEEDLES OF FRACTURE SURFACES; | | | | | | | | |

Scale

Colour Plot
& Dips

Drill Hole Record



| | | |
|--------------|-----------|------------------|
| Property | District | Hole No. BR-87-6 |
| Commenced | Location | Tests at |
| Completed | Core Size | Corr. Dip |
| Co-ordinates | | True Brg. |
| Objective | | % Recov. |
| | | Hor. Comp. |
| | | Vert. Comp. |
| | | Logged by |
| | | Date |

| | | | | | | |
|-------|--------|------------|-------|--------|----------|-------|
| Claim | T Brg. | Collar Dip | Elev. | Length | Hole No. | Sheet |
|-------|--------|------------|-------|--------|----------|-------|

| Footage From To | Description | Sample No. | Length | Analysis | | | | | |
|--------------------|--|---------------|--------|----------|--|--|--|--|--|
| | | | | | | | | | |
| 78.9 | -- QUARTZ VEIN (1 CM WIDE) 025° (TO CA) WITH 5% MASSIVE TOURMALINE | | | | | | | | |
| 79.9 | -- DISCONTINUOUS CARBONATE SEAM 010° (TO CA) WITH 15% FINE PYRITE | | | | | | | | |
| 80.0 - 80.1 | -- NARROW SHEAR BAND (FAULT GUDGE) | | | | | | | | |
| 80.2 | -- 5 M.M. SMOKY QUARTZ VEIN AT 050° | | | | | | | | |
| 80.5 | -- 5 C.M. SMOKY QUARTZ VEIN AT 050° | | | | | | | | |
| 83.3 - 83.6 | -- 3 1 CM QUARTZ-CARBONATE VEINS WITH UP TO 20% MASSIVE TOURMALINE 050° (TO CA) PERPENDICULAR TO FOLIATION | | | | | | | | |
| 83.7 - 84.5 | -- STRONGLY FOLIATED (050° TO CA) SECTION WITH 5% FINE TOURMALINE NEEDLES | | | | | | | | |
| 86.3 - 92.3 | -- MASSIVE TO VERY WEAK FOLIATION; DARKER GRAY Q.F.P. WITH 1/2 CM WIDE QUARTZ-CARBONATE VEINS (87.6, 89.7, 91.5) WITH 20-30% TOURMALINE, 045° (TO CA) | | | | | | | | |
| 94.9 | -- 1 CM CARBONATE-QUARTZ VEIN WITH 20% TOURMALINE (010° TO CA) | | | | | | | | |
| 94.0 - 95.3 | -- INCREASING FOLIATION | | | | | | | | |
| 95.3 - 100.7 | HEMATITIC Q.F.P. MODERATE TO INTENSELY FOLIATED; WITH QUARTZ-TOURMALINE SEAMS (1 PER M.) | | | | | | | | |
| 98.1 | -- 2-3 M.M. WIDE TOURMALINE SEAM 045° (TO CA) PERPENDICULAR TO FOLIATION. OVERLYING FOLIATION PARALLEL DISMEMBERED 2 CM WIDE QUARTZ-CARBONATE TOURMALINE VEIN; | | | | | | | | |
| 98.6 - 98.8 | -- SILICIFIED ZONE: CONTAINS 3 1 CM WIDE QUARTZ-CARBONATE-TOURMALINE VEIN WITH TRACE PYRITE; | | | | | | | | |
| 100.7 | -- NARROW SHEAR BAND (045° TO CA) UNDERLYING 2 1 MM TOURMALINE SEAMS (045° TO CA) | | | | | | | | |

Drill Hole Record



| | | | |
|--------------|-----------|-------------------------|-------------|
| Property | District | Hole No. <i>BR-87-6</i> | |
| Commenced | Location | Tests at | Hor. Comp. |
| Completed | Core Size | Corr. Dip | Vert. Comp. |
| Co-ordinates | | True Brg. | Logged by |
| Objective | | % Recov. | Date |

| | | | | | | |
|-------|--------|------------|-------|--------|----------|----------------|
| Claim | T Brg. | Collar Dip | Elev. | Length | Hole No. | Sheet <i>5</i> |
|-------|--------|------------|-------|--------|----------|----------------|

| Footage From | To | Description | Sample No. | Length | Analysis | | | | | |
|-----------------|-------------|--|---------------|--------|----------|--|--|--|--|--|
| 100.7 | 130.8 | GREY Q.F.P.: MODERATE TO STRONGLY FOLIATED; TOURMALINE [±] QUARTZ [±] CARBONATE SEAMS (1-3 mm WIDE), FOLIATION PARALLEL, 1 PER 2 m. | | | | | | | | |
| | 109.2-109.5 | -- 5% WEATHERED OUT COARSE CARBONATE | | | | | | | | |
| | 110.5 | -- 1 cm WIDE WEATHERED OUT CARBONATE VEIN | | | | | | | | |
| | 117.6-117.7 | -- INTENSE FOLIATION | | | | | | | | |
| | 121.8-1220 | -- DISSOLVED CARBONATE [±] QUARTZ VEIN, 010° (TO CA) | | | | | | | | |
| | 122.5 | -- QUARTZ, CARBONATE, TOURMALINE VEIN 010° (TO C.A.) PERPENDICULAR TO FOLIATION; | | | | | | | | |
| | 124.8 | -- 3 cm WIDE QUARTZ-CARBONATE VEIN; | | | | | | | | |
| | 129.5-129.8 | -- 2 1 cm WIDE QUARTZ [±] CARBONATE [±] TOURMALINE VEIN PARALLEL TO CA IN BLEACHED, BRECCIATED Q.F.P.; ONE VEIN CONTAINS 60% MASSIVE TOURMALINE; | | | | | | | | |
| 130.8 | 132.8 | HEMATITE Q.F.P.: SIMILAR TO 95.3-100.7; | | | | | | | | |
| | 130.0-132.0 | -- 1-3 mm WIDE TOURMALINE [±] QUARTZ [±] CARBONATE SEAMS (2-3 PER m) CARBONATE STRINGERS (1 PER m) | | | | | | | | |
| 132.8 | 137.8 | GRAY Q.F.P.: SIMILAR TO 100.7-130.8; WITH NARROW INTENSELY FOLIATED SHEAR BANDS (134.4-134.6, 135.2-135.3, 135.8-135.9); | | | | | | | | |

Drill Hole Record



| | | | |
|--------------|-----------|------------------|-------------|
| Property | District | Hole No. BR-87-6 | |
| Commenced | Location | Tests at | Hor. Comp. |
| Completed | Core Size | Corr. Dip | Vert. Comp. |
| Co-ordinates | | True Brg. | Logged by |
| Objective | | % Recov. | Date |

Claim

T Brg.

Collar Dip

Elev.

Length

Hole No.

Sheet

| Footage | | Description | Sample No. | Length | Analysis | | | | | |
|---------|-------|--|------------|--------|----------|--|--|--|--|--|
| From | To | | | | | | | | | |
| 137.8 | 152.5 | DARK GRAY QFP: WEAK TO STRONG FOLIATION; WITH TOURMALINE [±] QUARTZ STRINGERS (1 PER M.) OR 1 CM WIDE QUARTZ [±] CARBONATE VEIN (1 PER M.) | | | | | | | | |
| 146.2 | | -- 1 CM WIDE QUARTZ-CARBONATE VEIN WITH 10% COARSE PYRITE AGGREGATES 060° (TO CA); | | | | | | | | |
| 149.7 | | -- 1 CM WIDE QUARTZ VEIN (040° TO CA, PERPENDICULAR TO FOLIATION) WITH DISSOLVED CARBONATE | | | | | | | | |
| 152.5 | 157.1 | GRAY Q.F.P.: TRANSITIONAL WITH OVERLYING SECTION; STRONG FOLIATION WITH CARBONATE VEINS (1-3 MM WIDE) 040° (TO CA) PERPENDICULAR TO FOLIATION (1 PER M.); | | | | | | | | |
| 157.1 | 170.0 | MEDIUM GRAY Q.F.P.: MODERATE TO STRONG FOLIATION; | | | | | | | | |
| 158.2 | 158.6 | -- LIGHT GRAY SECTION WITH 1-2% FINE PYRITE; RELATIVELY SHARP UPPER & LOWER CONTACTS; | | | | | | | | |
| 162.7 | 163.0 | -- 1/2 CM WIDE QUARTZ-CARBONATE VEIN (PARALLEL TO C.A.) 2-3% COARSE PYRITE | | | | | | | | |
| 168.7 | 170.0 | -- SEVERAL TOURMALINE [±] QUARTZ STRINGERS | | | | | | | | |
| 170.0 | | EDH. | | | | | | | | |

Scale

Colour Plot & Dip

Drill Hole Record



| | | | |
|--------------|-----------|-------------------------|-------------|
| Property | District | Hole No. <i>BR-87-6</i> | |
| Commenced | Location | Tests at | Hor. Comp. |
| Completed | Core Size | Corr. Dip | Vert. Comp. |
| Co-ordinates | | True Brg. | Logged by |
| Objective | | % Recov. | Date |

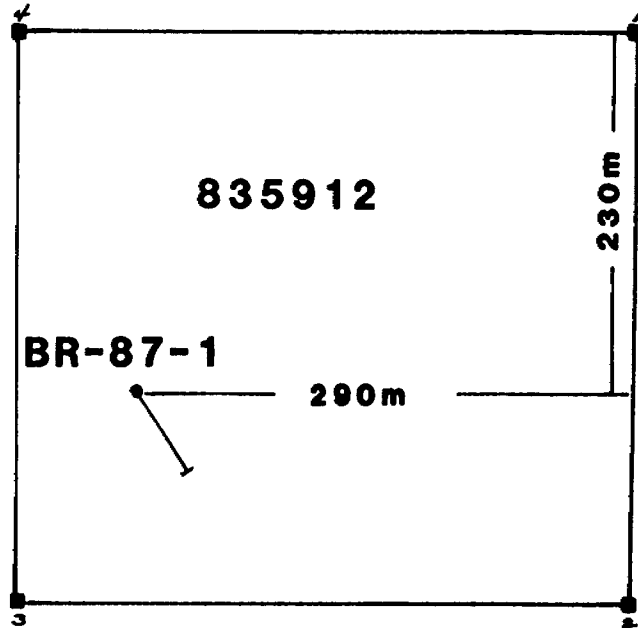
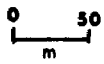
Claim
T Brg.
Collar Dip
Elev.
Length
Hole No. *7*
Sheet *7*

| Footage From | To | Description | Sample No. | Length | Analysis |
|--------------|----|-----------------------------|------------|--------|----------|
| | | 0 - 35.0 OVERBURDEN | | | |
| | | 35.0 - 47.4 GRAY QFP | | | |
| | | 47.4 - 49.7 MAFIC DYKE | | | |
| | | 49.7 - 62.9 GRAY QFP | | | |
| | | 62.9 - 75.1 HEMATITIC QFP | | | |
| | | 75.1 - 95.3 GRAY QFP | | | |
| | | 95.3 - 100.7 HEMATITIC QFP | | | |
| | | 100.7 - 130.8 GRAY QFP | | | |
| | | 130.8 - 132.8 HEMATITIC QFP | | | |
| | | 132.8 - 170.0 GRAY QFP | | | |
| | | 170.0 EOH | | | |

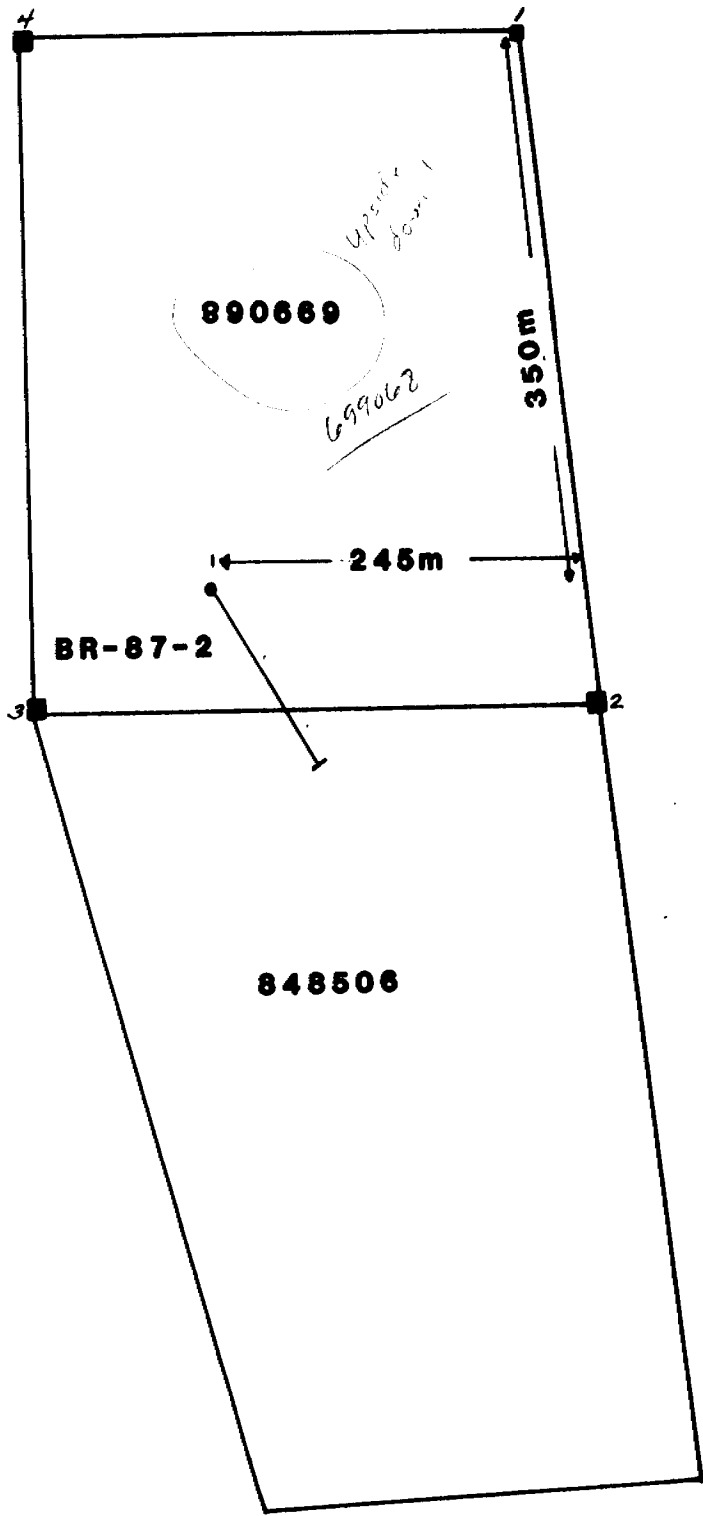
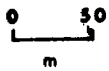
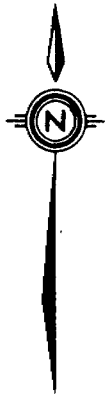
ONTARIO GEOLOGICAL SURVEY
ASSESSMENT FILES
RESEARCH OFFICE

MAR 10 1987

RECEIVED



| | | | | | | | |
|------------|------|------------|------|-------------------------------------|--|--|--|
| Drawn by: | | Traced by: | | ALLERSTON OPTION BRISTOL TWP | | | |
| Revised by | Date | Revised by | Date | | | | |
| | | | | Scale: 1:5,000 | | | |
| | | | | Date: Feb. 1987 | | | |
| | | | | Plate: Fig. 17 | | | |



| | | | |
|------------------------|------|------------|------|
| Drawn by: R. F. | | Traced by: | |
| Revised by | Date | Revised by | Date |
| | | | |
| | | | |
| | | | |
| | | | |
| | | | |
| | | | |

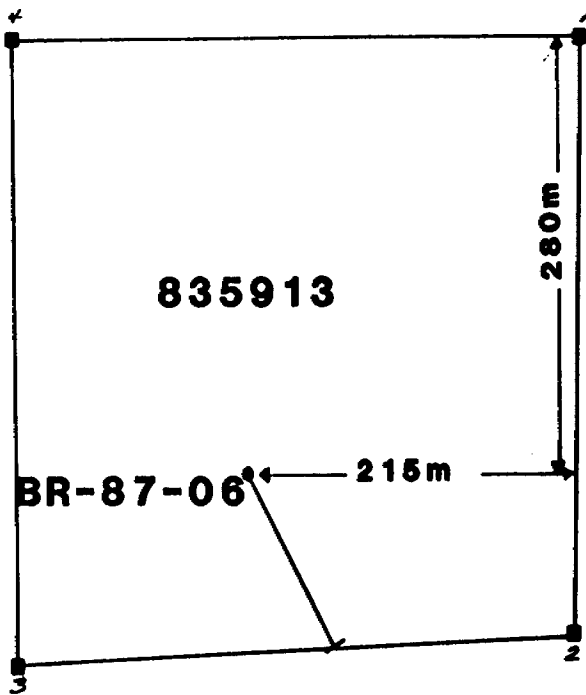
ALLERSTON OPTION BRISTOL TWP

COLLAR LOCATION PLAN DDH BR-87-2

Scale: **1:5,000** Date: **FEB. 1987** Plate: **FIG. 18**



0 50
m



| | | | |
|------------|------|------------|------|
| Drawn by: | | Traced by: | |
| Revised by | Date | Revised by | Date |
| | | | |
| | | | |
| | | | |
| | | | |
| | | | |
| | | | |

ALLERSTON OPTION BRISTOL TWP

COLLAR LOCATION PLAN DDH BR-87-6

Scale: 1:5,000

Date: Feb. 1987

Plate: Fig. 19





Name and Postal Address of Recorded Holder

COMINCO LTD. A10043

2200-120 ADELAIDE STREET WEST, TORONTO, ONTARIO M5H 1T1

Summary of Work Performance and Distribution of Credits

| Total Work Days Cr. claimed | Mining Claim | | | Work Days Cr. | Mining Claim | | | Work Days Cr. |
|---|-------------------------------------|---|---------------|---------------|--------------|--------|---------------|---------------|
| | Prefix | Number | Work Days Cr. | | Prefix | Number | Work Days Cr. | |
| 1683 | | | | | | | | |
| for Performance of the following work. (Check one only) | <input type="checkbox"/> | Manual Work | | | | | | |
| | <input type="checkbox"/> | Shaft Sinking Drifting or other Lateral Work. | | | | | | |
| | <input type="checkbox"/> | Compressed Air, other Power driven or mechanical equip. | | | | | | |
| | <input type="checkbox"/> | Power Stripping | | | | | | |
| | <input checked="" type="checkbox"/> | Diamond or other Core drilling | | | | | | |
| | <input type="checkbox"/> | Land Survey | | | | | | |

SEE ATTACHED LIST

ONTARIO GEOLOGICAL ASSESSMENT FILE

MAR 18 1987

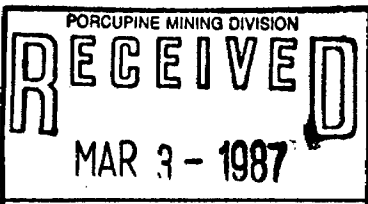
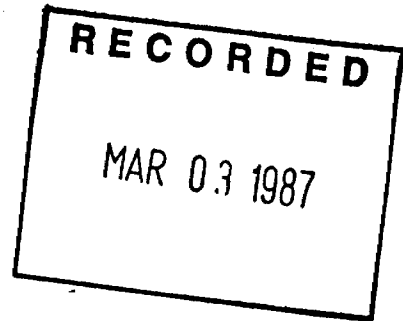
RECEIVED

All the work was performed on Mining Claim(s): P-835912, P-~~890669~~⁶⁹⁹⁰⁶⁸, P-848506, P-835913

Required Information eg: type of equipment, Names, Addresses, etc. (See Table Below)

| Hole No. | Length | Dia. of Core | Angle | Dates Drilled |
|----------|---------------|--------------|-------|------------------|
| BR87-1 | 173m | BQ | -45° | Jan. 21-23, 1987 |
| BR87-2 | 170m | BQ | -45° | Jan. 25-27, 1987 |
| BR87-6 | 170m | BQ | -45° | Feb. 4-6, 1987 |
| | 513m | | | |
| | x 3.2808 | | | |
| | 11683.05 feet | | | |

Drilled by: Bradley Bros. Limited, Timmins, Ontario



Date of Report: Feb. 27, 1987

Recorded Holder or Agent (Signature): *[Signature]*

Certification Verifying Report of Work

I hereby certify that I have a personal and intimate knowledge of the facts set forth in the Report of Work annexed hereto, having performed the work or witnessed same during and/or after its completion and the annexed report is true.

Name and Postal Address of Person Certifying: R.C. LaRoche - c/o Cominco Ltd. 2200-120 Adelaide Street West, Toronto, Ontario M5H 1T1

Date Certified: Feb. 27, 1987

Certified by (Signature): *[Signature]*

Table of Information/Attachments Required by the Mining Recorder

| Type of Work | Specific information per type | Other information (Common to 2 or more types) | Attachments |
|---|--|---|--|
| Manual Work | Nil | Names and addresses of men who performed manual work/operated equipment, together with dates and hours of employment. | Work Sketch: these are required to show the location and extent of work in relation to the nearest claim post. |
| Shaft Sinking, Drifting or other Lateral Work | | | |
| Compressed air, other power driven or mechanical equip. | Type of equipment | Names and addresses of owner or operator together with dates when drilling/stripping done. | |
| Power Stripping | Type of equipment and amount expended. Note: Proof of actual cost must be submitted within 30 days of recording. | | |
| Diamond or other core drilling | Signed core log showing; footage, diameter of core, number and angles of holes. | | Work Sketch (as above) in duplicate |
| Land Survey | Name and address of Ontario land surveyor. | Nil | Nil |

BRISTOL PROPERTY

| <u>Claim No.</u> | <u>DAYS CREDIT</u> | <u>Claim No.</u> | <u>DAYS CREDIT</u> |
|------------------|--------------------|------------------|--------------------|
| P. 880865 | 20 | P. 699061 | 79 |
| 880866 | 20 | 699062 | 80 |
| 792790 | 60 | 699063 | 80 |
| 792791 | 60 | 699064 | 80 |
| 792792 | 60 | 699065 | 40 |
| 792832 | 60 | 699066 | 40 |
| 792836 | 60 | 699067 | 40 |
| 792837 | 60 | 699068 | 40 |
| 792838 | 60 | 921756 | 20 |
| 792839 | 60 | 921757 | 20 |
| 792840 | 60 | 921758 | 20 |
| 792841 | 60 | 781396 | 14 |
| 792847 | 60 | 781397 | 19 |
| 699056 | 80 | 781398 | 19 |
| 699057 | 80 | 783002 | 39 |
| 699059 | 80 | 806243 | 11 |
| 699060 | 80 | 806244 | 11 |
| | | 806245 | 11 |

