



Established 1928

Swastika

A Division of A



42A06NW8429 2.12596 BRISTOL

010

Assaying - Consulting - Representation

Certificate of Analysis

Certificate No. 75353

Date June 15, 1989

Received June 14, 1989 33 samples of sawn core

Submitted by E. Van Hees, Timmins, Ontario

SAMPLE NO.	GOLD PPB	SAMPLE NO.	GOLD PPB
EVH-17051	5	EVH-17071	Nil
17052	Nil	17072	Nil
17053	Nil	17073	Nil
17054	Nil	17074	Nil
17055	Nil	17075	Nil
17056	Nil	17076	Nil
17057	Nil	17077	Nil
17058	Nil	17078	5
17059	Nil	17079	Nil
17060	Nil/Nil	17080	Nil/Nil
17061	Nil	17081	Nil
17062	Nil	17082	Nil
17063	Nil	17083	Nil
17064	Nil		
17065	Nil		
17066	Nil		
17067	5		
17068	Nil		
17069	Nil		
17070	Nil/5		

Per *G. Label*

G. Label, Manager/dg



Swastika Laboratories

A Division of Assayers Corporation Ltd.

Assaying - Consulting - Representation

Certificate of Analysis

Certificate No. 75398

Date June 23, 1989

Received June 20, 1989 71

samples of sawn core

Submitted by E. Van Hees, Timmins, Ontario

SAMPLE NO.	GOLD	SAMPLE NO.	GOLD	SAMPLE NO.	GOLD
17221	PPB 10	17246	N11	17271	PPB N11
17222	10	17247	N11	17272	N11
17223	30/20	17248	N11/N11	17273	N11
17224	10	17249	N11	17274	N11
17225	N11	17250	N11	17275	N11
17226	N11	17251	N11	17276	N11
17227	N11	17252	N11	17277	N11/10
17228	N11	17253	N11	17278	N11
17229	10	17254	N11	17279	N11
17230	N11	17255	N11	17280	N11
17231	N11	17256	N11	17281	N11
17232	N11	17257	N11	17282	N11
17233	N11	17258	10/N11	17283	N11
17234	20	17259	N11	17284	N11
17235	N11	17260	N11	17285	N11
17236	10	17261	N11	17286	N11
17237	N11	17262	10/10	17287	N11
17238	N11	17263	N11	17288	N11
17239	N11	17264	N11	17289	N11/N11
17240	N11	17265	10	17290	N11
17241	N11/N11	17266	N11	17291	N11
17242	N11	17267	10		
17243	N11	17268	N11		
17244	N11	17269	N11		
17245	N11	17270	N11		

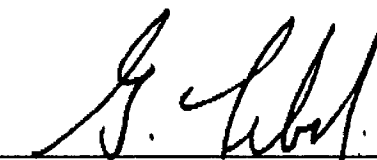
Per 
G. Lebel, Manager/dg



P.O. Box 10, Swastika, Ontario P0K 1T0
Telephone (705) 642-3244, FAX (705) 642-3300

SAMPLE NO.	GOLD PPB	SAMPLE NO.	GOLD PPB
17124	N11	17144	N11
17125	N11	17145	N11
17126	10	17146	N11
17127	520/620	17147	N11
17128	N11	17148	N11
17129	N11	17149	N11/N11
17130	N11	17150	N11
17131	N11	17151	N11
17132	N11	17152	N11
17133	N11	17153	N11
17134	N11	17154	N11
17135	N11	17155	N11
17136	N11	17156	N11
17137	N11/N11	17157	N11
17138	N11	17158	N11
17139	N11		
17140	N11		
17141	N11		
17142	N11		
17143	N11		

Per



G. Lebel, Manager/dg

Established 1928



P.O. Box 10, Swastika, Ontario P0K 1T0
Telephone (705) 642-3244, FAX (705) 642-3300



Swastika Laboratories

A Division of Assayers Corporation Ltd.

Assaying - Consulting - Representation

Certificate of Analysis

Certificate No. 75386

Date June 21, 1989

Received June 19, 1989 62 samples of sawn core

Submitted by E. Van Hees, Timmins, Ontario

SAMPLE NO.	GOLD PPB	SAMPLE NO.	GOLD PPB	SAMPLE NO.	GOLD PPB
17159	N11	17180	N11	17201	N11
17160	N11	17181	N11	17202	N11
17161	10	17182	N11	17203	N11
17162	50/50	17183	N11	17204	N11
17163	N11	17184	20/30 ✓	17205	N11
17164	N11	17185	N11	17206	N11/N11
17165	10	17186	N11	17207	N11
17166	N11	17187	N11	17208	N11
17167	N11	17188	N11	17209	N11
17168	N11	17189	N11	17210	N11
17169	N11	17190	N11	17211	N11
17170	N11/N11	17191	N11	17212	N11
17171	N11	17192	N11	17213	N11
17172	N11	17193	90/50	17214	N11
17173	N11	17194	40	17215	N11
17174	N11	17195	30	17216	N11
17175	N11	17196	N11	17217	N11
17176	N11	17197	N11	17218	N11/N11
17177	N11	17198	N11	17219	N11
17178	N11	17199	N11	17220	N11
17179	N11	17200	N11		

Per 
G. Label, Manager/dg



P.O. Box 10, Swastika, Ontario P0K 1T0
Telephone (705) 642-3244. FAX (705) 642-3300



Ministry of
Northern Development
and Mines
Ontario

Report of Work
(Geophysical, Geological,
Geochemical and Expenditures)



42A06NW8429 2.12596 BRISTOL

900

W 8906.330

2.12596

Type of Survey(s) ANALYSES	Township or Area BRISTOL TOWNSHIP
Claim Holder(s) CHEVRON MINERALS LTD.	Prospector's Licence No. T1690
Address #1714-390 BAY STREET, TORONTO, ONTARIO M5H 2Y2	
Survey Company ED VAN HEES	Date of Survey (from & to) 01 06 89 27 06 89
Name and Address of Author (of Geo-Technical report) ED VAN HEES, 165 TAMARACK STREET, TIMMINS, ONTARIO P4N 6P7	

Credits Requested per Each Claim in Columns at right

Mining Claims Traversed (List in numerical sequence)

Special Provisions	Geophysical	Days per Claim
For first survey: Enter 40 days. (This includes line cutting)	- Electromagnetic	
	- Magnetometer	
For each additional survey: using the same grid: Enter 20 days (for each)	- Radiometric	
	- Other	
	Geological	
	Geochemical	

Man Days	Geophysical	Days per Claim
Complete reverse side and enter total(s) here	- Electromagnetic	
	- Magnetometer	
	- Radiometric	
	- Other	
	Geological	
	Geochemical	

Airborne	Geophysical	Days per Claim
JUN 26 1989	- Electromagnetic	
	- Magnetometer	
	- Radiometric	

Mining Claim Prefix	Mining Claim Number	Expend. Days Cr.
P	752195	15
	752198	15
	752199	15
	752200	15
	752202	15
	752204	15
	752205	15

Mining Claim Prefix	Mining Claim Number	Expend. Days Cr.
ONTARIO GEOLOGICAL SURVEY ASSESSMENT FILES OFFICE		
SEP 07 1989		
RECEIVED		

RECORDED	
JUN 26 1989	

RECEIVED	
JUL 10 1989	

MINING LANDS SECTION

Expenditures (excludes power stripping)

Type of Work Performed
ANALYSES ON DRILL HOLES

Performed on Claim(s)

Calculation of Expenditure Days Credits

Total Expenditures	÷	Total Days Credits	=	
\$ 2444.00	÷	15	=	162.9

Instructions
Total Days Credits may be apportioned at the claim holder's choice. Enter number of days credits per claim selected in column at right.

For Office Use Only		
Total Days Cr. Recorded 105	Date Recorded JUNE 26/89	Mining Recorder <i>[Signature]</i>
Date Approved as Recorded <i>[Signature]</i>		

Date: **7/10/89**

Recorder Holder or Agent (Signature): *[Signature]*

Certification Verifying Report of Work

I hereby certify that I have a personal and intimate knowledge of the facts set forth in the Report of Work annexed hereto, having performed the work or witnessed same during and/or after its completion and the annexed report is true.

Name and Postal Address of Person Certifying
W.E. GLENN, #1714-390 BAY STREET, TORONTO, ONTARIO M5H 2Y2

Certified by (Signature): *[Signature]*

MAP SYMBOLOGY

- Aerial Cableway
- Boundary
- International
- District, Township
- Indian Reserve
- Assessment
- Lot, Concession
- Approximate
- Part Boundary
- Bridge
- Road, Railroad
- Building
- Chimney
- Cliff, Pit, Pile
- Contours
- Interpretation
- Approximate
- Depression
- Control Points
- Horizontal
- Vertical
- Culvert
- Falls
- Double line river
- Fence, Hedge, Wall
- Feature Outline
- (Construction features)
- Flooded Land
- Lock
- Marsh or Swamp
- Moat
- Mine Head Frame
- Outcrop
- Pipeline (above ground)
- Railroad
- Single Track
- Double Track
- Abandonment
- Turbine
- Road
- Highway, County
- Tramway
- Access Road of doubtful
- significance (dashed)
- Rail, Base Road
- (average width)
- Rapids
- Double line river
- with multiple rapids
- Reservoir
- Approximate
- position
- Location of flow
- River, Stream, Canal
- Approximate
- position
- Location of flow
- Lock
- Spot Elevation
- (Three elevations)
- 300.0
- Tower
- Transmission Line
- Pole
- Pylon
- Tunnel
- Utility Poles
- Wharf, Dock, Pier
- Wooded Area

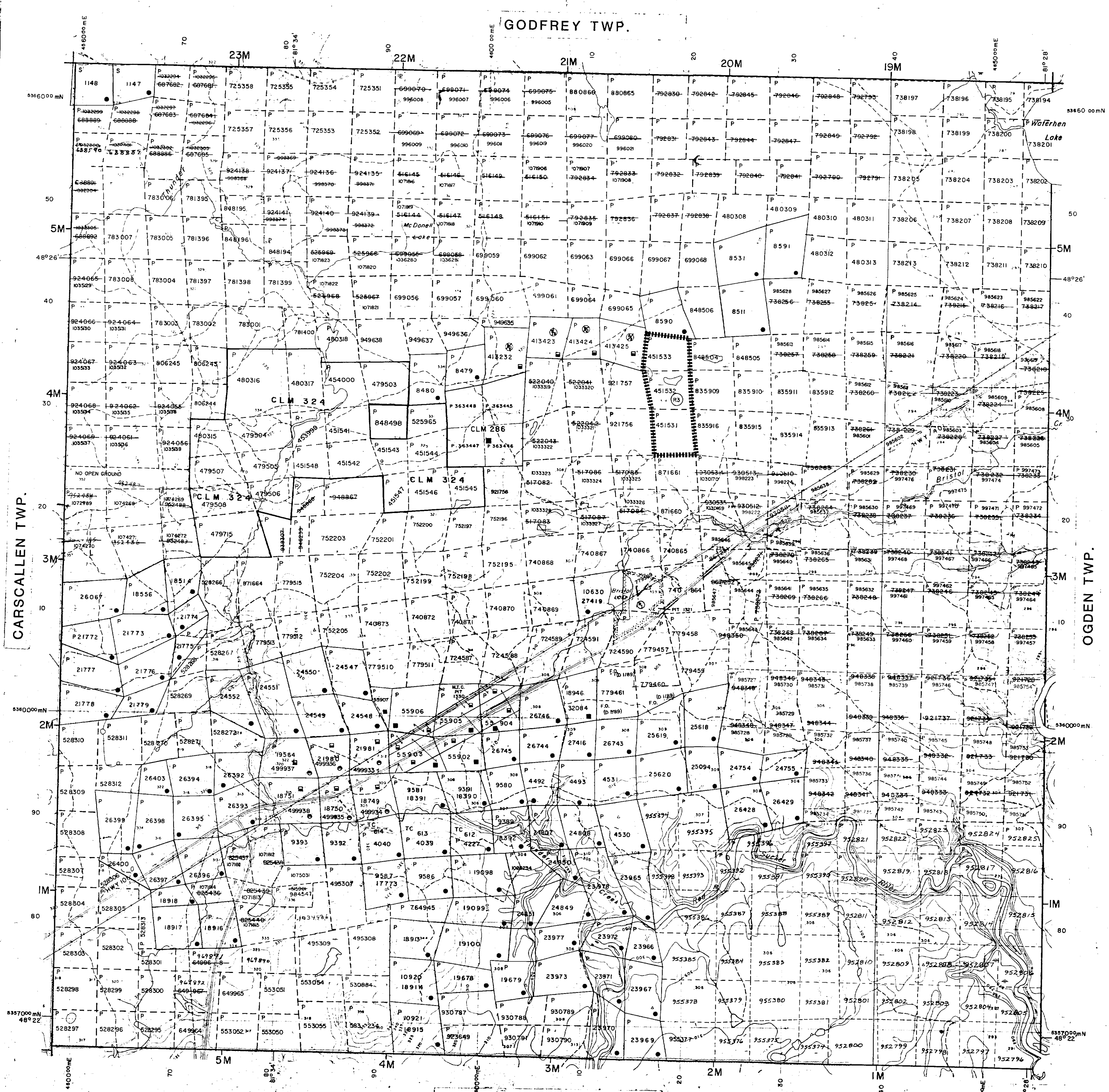
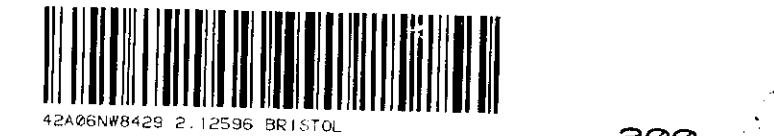
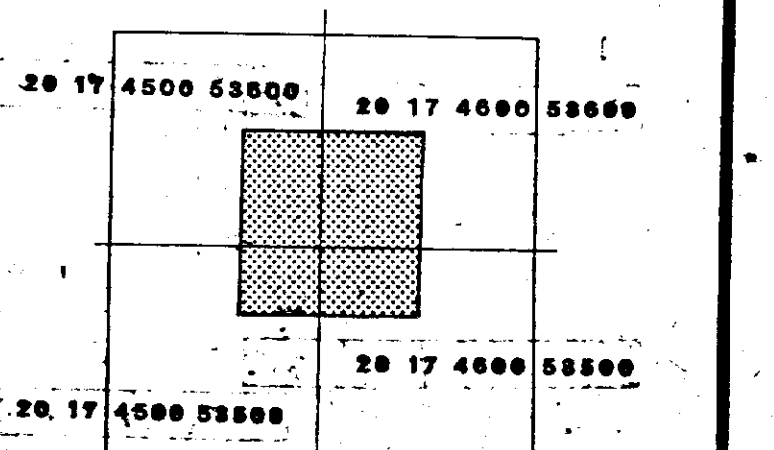
AREAS WITHDRAWN FROM DISPOSITION

M.R.O. - MINING RIGHTS ONLY
 S.R.O. - SURFACE RIGHTS ONLY
 M.+S. - MINING AND SURFACE RIGHTS

Description	Order No.	Date	Disposition	File
S.R.O.	164584			
RESERVED BY ORDER	NRD 24/17	FEB. 19187		

MINING AND SURFACE RIGHTS WITHDRAWN FROM PROSPECTING, STAKING, SALE OR LEASE, SECTION 36 THE MINING ACT RSO 1980

KEY PLAN For O.B.M. Map



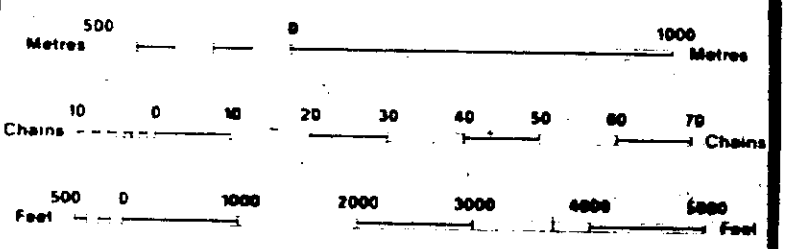
LEGEND

- HIGHWAY AND ROUTE No.
- OTHER ROADS
- TRANS
- SURVEYED LINES
- TOWNSHIPS, BASE LINES, ETC.
- LOTS, MINING CLAIMS, PARCELS, ETC.
- UNSURVEYED LINES
- LOT LINES
- PARCEL BOUNDARY
- MINING CLAIMS ETC.
- RAILWAY AND RIGHT OF WAY
- UTILITY LINES
- NON PERENNIAL STREAM
- FLOODING OR FLOODING RIGHTS
- SUBDIVISION OR COMPOSITE PLAN
- RESERVATIONS
- ORIGINAL SHORELINE
- MARSH OR MUSKEG
- MINES
- TRAVERSE MONUMENT

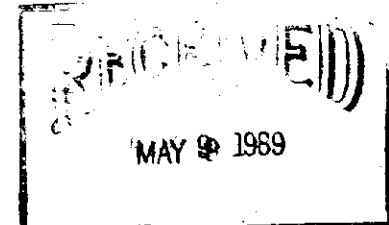
DISPOSITION OF CROWN LANDS

TYPE OF DOCUMENT	SYMBOL
PATENT, SURFACE & MINING RIGHTS	●
SURFACE RIGHTS ONLY	○
MINING RIGHTS ONLY	◐
LEASE SURFACE & MINING RIGHTS	■
SURFACE RIGHTS ONLY	◼
MINING RIGHTS ONLY	◻
LICENCE OF OCCUPATION	□
ORDER IN COUNCIL	OC
RESERVATION	○
CANCELLED	⊙
SAND & GRAVEL	⊙

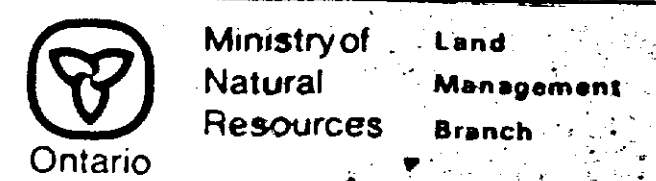
NOTE: MINING RIGHTS IN PARCELS PATENTED PRIOR TO MAY 6 1913 VESTED IN ORIGINAL PATENTEE BY THE PUBLIC LANDS ACT, R.S.O. 1970, CHAP. 300, SEC. 63, SUBSEC. 1



SCALE 1:20 000
 ZONE 17



TOWNSHIP
BRISTOL
 M.N.R. ADMINISTRATIVE DISTRICT
TIMMINS
 MINING DIVISION
PORCUPINE
 LAND TITLES / REGISTRY DIVISION
COCHRANE



ORIGINAL: JULY 1984
 COMPILATION: JULY 1984