



42A06SE1853 30 LANGMUIR

010

Diamond Drilling

Township of LANGMUIR

Report No: 30

Work performed by: E. Galata

Claim No	Hole No	Footage	Date	Note
P 92223	1	500'	Mar/67	
	G-5-70	741'	Jan/70	(1)
P 92219	4	500'	Apr/67	
P 85330	G-1-70	356'	Jan/70	(1)
	G-2-70	202.5'	Jan/70	(1)
	G-3-70	306'	Jan/70	(1)
P 91789	G-4-70	333'	Jan/70	(1)
P 95331	G-6-70	713'	Jan/70	(1)
P -91788	G-7-70	380'	Feb/70	(1)

Notes:

(1) #7/71

DIAMOND DRILL LOGS
GALATA PROPERTY
JAN. _ FEB., 1970

logged by D.R. Bell

approved by

J. W. [Signature]

7 / 71 *Luzonin etc*
Elmer Galata

FALCONBRIDGE NICKEL MINES LIMITED

DIAMOND DRILL LOG

LOCATION L. 26E - 85 BEARING North HOLE NO. G-1-70
 LOGGED BY D.R. Bell ELEVATION Surface DIP -50 PROPERTY Galata Property
 STARTED January 15, 1970 TESTS (CORRECTED)
 FINISHED January 18, 1970 200' @ 50
 CASING 26'
 CORE SIZE A.X.T.

FROM	TO	Mag. Prop.	Summary.	DESCRIPTION
0	26		Overburden.	
26	51.5	N.M.	Dacite.	
51.5	71	N.M.	Andesite.	
71	113	N.M.	Amphibelite.	
113	136	M. S.'M.	Mineralizal Zone.	
136	290	N.M.	Dacite.	
290	348	N.M.	Quartz Diabase.	
348	356	N.M.	Dacite Porphyry.	
356			<u>End of Hole.</u>	
<p><u>Results:</u> E.M. conductor due to massive blebs and stringers of Po. 3-15%, from 113' - 136'. Mag. anomaly due to massive diss. magnetite bands from 113' - 136', in an amphibolite.</p>				

FNM 35-10-66

FALCONBRIDGE NICKEL MINES LIMITEDDIAMOND DRILL LOG

LOCATION 226E-85 BEARING North HOLE NO G-1-70
 LOGGED BY D.R. Bell ELEVATION Surface DIP 50 PROPERTY Galata Property
 STARTED January 15, 1970 TESTS (CORRECTED)
 FINISHED January 18, 1970
 CASING 26'
 CORE SIZE A.X.T.

FROM	TO	DESCRIPTION
		Detailed.
0	26	<u>Overburden:</u> Sand and gravel.
26	51.5	<u>Dacite:</u> Medium grey, fine grained to aphanitic dacite. Slight foliation suggested at 30 degrees to core but in general the rock is massive. Few widely scattered quartz-feldspar-carbonate veins, 1-3 mm. wide.
51.5	71	<u>Andesite:</u> Medium to dark green, fine grained massive andesite. Few widely scattered mafic and white feldspar phenocrysts. Minor fine feldspar - Carbonate veins, 20 degrees - 55 degrees to core.
71	113	<u>Amphibolite:</u> Medium green, fine grained amphibolite. The texture is sugary with fine black hornblende, chlorite, and feldspar. Minor foliation suggested at 35 degrees - 45 degrees. Very fine grained Po. disseminated throughout mass. Less than 1% mass. 1½ inch massive vein of Po. at 107', 20 degrees to core.

FNM 35-10-66

FALCONBRIDGE NICKEL MINES LIMITED

DIAMOND DRILL LOG

LOCATION L 26E - 85 BEARING North HOLE NO. G-1-70
 LOGGED BY _____ ELEVATION _____ DIP _____ PROPERTY Galata Property
 STARTED _____ TESTS (CORRECTED) _____
 FINISHED _____
 CASING _____
 CORE SIZE _____

FROM	TO	DESCRIPTION
113	136	<p><u>Mineralized Zone:</u> Dark green-black, fine grained hornblende in a massive aphanitic, medium green mafic mass. Bands of massive disseminated magnetite, 25-35 degrees to core. Massive blebs and fine stringers of Po. with minor c. (3-15%)</p>
136	290	<p><u>Dacite:</u> Light grey-green, aphanitic massive dacite. No foliation detected. Scattered feldspar-carbonate veins from 40 degrees - 60 degrees. (136-152) Minor mafic alteration increasing towards upper contact. (258-270) minor white feldspar porphyry. Lower contact is at 30 degrees - 35 degrees to core.</p>
290	348	<p><u>Quartz Diabase:</u> Dark green, fine to medium grained quartz diabase. Minor widely scattered pyrite cubes. Not magnetic. Lower diabase contact at 55 degrees.</p>

FNM 35-10-66

FALCONBRIDGE NICKEL MINES LIMITED**DIAMOND DRILL LOG**

LOCATION L 26E-85 BEARING North HOLE NO G-1-70
 LOGGED BY _____ ELEVATION _____ DIP -50 PROPERTY Galata Property.
 STARTED _____ TESTS (CORRECTED) _____
 FINISHED _____
 CASING _____
 CORE SIZE _____

FROM	TO	DESCRIPTION
348	356	<u>Dacite Porphyry:</u> Light grey-green, aphenitic dacite with scattered white feldspar porphyry. Few minor widely scattered pyrite cubes. Not Magnetic.
356		<u>End of Hole.</u>

FNM 35-10-66

FALCONBRIDGE NICKEL MINES LIMITED
DIAMOND DRILL LOG

LOCATION L 30E-95 BEARING North HOLE NO. G-2-70
 LOGGED BY D.R. Bell ELEVATION Surface DIP 50 PROPERTY Galata Property
 STARTED January 20, 1970 TESTS (CORRECTED)
 FINISHED January 22, 1970 200' @ 50
 CASING 16'
 CORE SIZE A x T

FROM	TO	Mag. Prop.	Summary	DESCRIPTION
0	16		Overburden.	
16	47	N.M.	Dacite.	
47	154	W.M.		
		S.'M.	Serpentinized Peridotite.	
154	202.5	N.M.	Dacite.	
202.5			<u>End of Hole.</u>	
<p><u>Results:</u> Mag. anomaly due to disseminated magnetite within the serpentinized ultramafic.</p>				

FNM 35-10-66

FALCONBRIDGE NICKEL MINES LIMITEDDIAMOND DRILL LOG

LOCATION L 30E 95 BEARING North HOLE NO. G-2-70
 LOGGED BY D.R. Bell ELEVATION Surface DIP 50 PROPERTY Galata Property
 STARTED January 20, 1970 TESTS (CORRECTED)
 FINISHED January 22, 1970 200' @ 50
 CASING 16'
 CORE SIZE A. X. T.

FROM	TO	DESCRIPTION
		<u>Detailed.</u>
0	16	<u>Overburden:</u> sand.
16	47	<u>Dacite:</u> Brownish grey, aphanitic altered dacite. Minor inclusions of serpentized material. Few scattered white feldspar porphyry. 20'-27' Serpentinite inclusion.
47	154	<u>Serpentinized Peridotite:</u> (47-51) Light green, fine to medium grained Carbonitized Ultramafic. (51-86) Blackish-green, fine grained serpentized Peridotite. Minor fine veinlets of serpentine with lesser amounts of asbestos. Very fine grained disseminated po. or py. throughout mass. Less than 1%. (86-154) Dark green, fine to medium grained serpentized peridotite - dunite. More Serpentine fracturing with a higher degree of magnetite in the fracturing as well as the rock mass itself.

FNM 35-10-65

FALCONBRIDGE NICKEL MINES LIMITED

DIAMOND DRILL LOG

LOCATION L 30E - 95 BEARING North HOLE NO. 2-70
 LOGGED BY _____ ELEVATION _____ DIP 50 PROPERTY Galata Property
 STARTED _____ TESTS (CORRECTED) _____
 FINISHED _____
 CASING _____
 CORE SIZE _____

FROM	TO	DESCRIPTION
47	154	<p><u>Serpentinized Peridotite: (Cont.)</u> Very fine disseminated pyrite or possible po. scattered throughout mass, less than 1%. Blebs of pink Stichtite disseminated throughout mass, 1-2% mass.</p>
154	202.5	<p><u>Dacite:</u> Medium grey, fine grained to aphanitic dacite. From the upper contact at 154' - 184', the volcanic dacite has been altered to a fine grained felsic rich volcanic, grading into an aphanitic dacite.</p>
202.5		<p><u>End of Hole.</u></p>

FALCONBRIDGE NICKEL MINES LIMITED**DIAMOND DRILL LOG**

LOCATION L 32E - 4 + 508 BEARING North HOLE NO. G-3-70
 LOGGED BY D.R. Bell ELEVATION Surface DIP 50 PROPERTY Galata Property
 STARTED January 23, 1970 TESTS (CORRECTED)
 FINISHED January 25, 1970 200' @ 50
 CASING 20'
 CORE SIZE A.X.T.

FROM	TO	Mag. Prop.	DESCRIPTION
			Summary.
0	20		Overburden.
20	126.3	N.M.	Massive Dacite.
126.3	134.5	W.M.	Mineralized Zone.
134.5	186	N.M.	Dacite.
186	201	S.M.	Amphibolite.
201	306	N.M.	Dacite.
306			<u>End of hole.</u>
<p><u>Results: E.M. Conductor</u> due to massive stringers of <u>Po.</u> with associated minor <u>Cp.</u> From 127' - 127.7', 50-80%. 126.3 - 129.5 10-30%. <u>Mag. anomaly</u> due to massive <u>diss. magnetite</u> in an amphibolite from 186' - 201'.</p>			

FNM 35-10-66

FALCONBRIDGE NICKEL MINES LIMITEDDIAMOND DRILL LOG

LOCATION L. 32E - 4 + 50S BEARING North HOLE NO. Q-3-70
 LOGGED BY D. R. Bell ELEVATION Surface DIP 50 PROPERTY Galata Property
 STARTED January 23, 1970 TESTS (CORRECTED)
 FINISHED January 25, 1970
 CASING 20'
 CORE SIZE A.X.T.

FROM	TO	DESCRIPTION
		Detailed.
0	20	<u>Overburden:</u> sand.
20	126.3	<u>Massive Dacite:</u> Light to medium grey, aphanitic, massive dacite. 31' - foliation suggested at 35 degrees. Minor scattered quartz-carbonate veins. 28' - 42' Badly broken ground. 68' - Foliation at 60 degrees, 97' - foliation at 35 degrees. 90' - 126.3 minor siliceous fragments.
126.3	134.5	<u>Mineralized Zone:</u> Streaks of massive Po, with minor Cp, within a brecciated light grey dacite. Mineralization is associated with secondary chloritization. Mineralization throughout section is 10-30%, 20-35 degrees. 127' - 127.7' 50-80% massive-rocky Po. & Cp. 134' - 134.5' 15-20% stringer Po. & minor Cp. 45 degrees to core.

FNM 35-10-66

FALCONBRIDGE NICKEL MINES LIMITEDDIAMOND DRILL LOG

LOCATION L 32E 4 + 50S BEARING North HOLE NO. 0-3-70
 LOGGED BY D.R. Bell ELEVATION _____ DIP 50 PROPERTY Galata Property
 STARTED _____ TESTS (CORRECTED) _____
 FINISHED _____
 CASING _____
 CORE SIZE _____

FROM	TO	DESCRIPTION
134.5	186	<u>Dacite:</u> Light to medium grey, aphanitic massive dacite. 146' - Foliation at 40 degrees.
186	201	<u>Amphibolite:</u> Medium to dark green, fine grained amphibolite. Massive to disseminated bands of magnetite, 30 degrees - 45 degrees. Secondary massive blebs and stringers of Po. with minor Cp., 2-5%. (186.5 - 188) 10-20% Po. (197.4 - 197.7) 10% diss. Po. (187.5 - 190.5) 60-80% magnetite.
201	306	<u>Massive Dacite:</u> Light to medium grey, aphanitic massive dacite. Suggested scattered foliation at 35 degrees to 40 degrees.
306		<u>End of Hole.</u>

FALCONBRIDGE NICKEL MINES LIMITED
DIAMOND DRILL LOG

LOCATION L24E - 1S BEARING North HOLE NO. G-4-70
 LOGGED BY D.R. Bell ELEVATION Surface DIP -50 PROPERTY Galata Option.
 STARTED Jan. 27, 1970 TESTS (CORRECTED)
 FINISHED Jan. 29, 1970 200' @ 50 Degrees.
 CASING 10'
 CORE SIZE A.X.T.

FROM	TO	Ma. Prop.	DESCRIPTION
0	10		Overburden.
10	36	N.M.	Dacite.
36	73	W.M.	Serpentinized Peridotite.
73	123	N.M.	Massive Andesite.
123	155	N.M.	Altered Peridotite (Picrite).
155	176	N.M.	Massive Dacite.
176	208	W.M.-S.M.	Serpentinized Peridotite.
208	239	W.M.	Diabase.
239	249	N.M.	Dacite Porphyry.
249	259	N.M.	Diabase.
259	303	N.M.	Massive Dacite.
303	333	S.M.	Serpentinized Peridotite.
	333		<u>End of Hole.</u>

FNM 35-10-66

FALCONBRIDGE NICKEL MINES LIMITED
DIAMOND DRILL LOG

LOCATION L24E - 1S BEARING North HOLE NO. G-4-70
 LOGGED BY D.R. Bell ELEVATION _____ DIP 50 PROPERTY Galata Option
 STARTED Jan. 27, 1970 TESTS (CORRECTED) _____
 FINISHED Jan. 29, 1970 _____
 CASING 10' _____
 CORE SIZE A.X.T.

FROM	TO	Detailed.	DESCRIPTION
0	10	<u>Overburden:</u>	Sand, gravel.
10	36	<u>Dacite:</u>	Light grey aphanitic altered dacite, minor chloritization along slip planes and slightly serpentized towards lower contact. Minor fracturing contains widely scattered streaks of Po. 13' - Foliation at 40 degrees to core. 18' - " " 30 " " " 24' - " " 50 " " " 35' - " " 45 " " "
36	73	<u>Serpentinized Peridotite:</u>	Dark green, fine grained serpentized peridotite. Minor brown biotite scattered throughout mass. Very fine diss - Po. 36' - 41', approx. 1%.
73	123	<u>Massive Andesite:</u>	Medium grey-green, fine grained to aphanitic massive andesite. Scattered fracturing of feldspar-carbonate veins. Few widely scattered (flakes) of Po. and minor Cp. Less than .5% mass.

FNM 35-10-66

FALCONBRIDGE NICKEL MINES LIMITEDDIAMOND DRILL LOGLOCATION L24E - 1S BEARING North HOLE NO. G-4-70LOGGED BY D.R. Bell ELEVATION _____ DIP _____ PROPERTY Galata Option

STARTED _____ TESTS (CORRECTED) _____

FINISHED _____

CASING _____

CORE SIZE _____

FROM	TO	DESCRIPTION
73	123	<u>Massive Andesite: (Cont.)</u> <u>110-120</u> Foliated andesite, 40 degrees to core. <u>120-123</u> Altered fine grained andesite with inclusions of serpentine. Diss. Pyrite 3-5%.
123	155	Contact at 123' Brecciated. <u>Altered Peridotite: (Picrite)</u> Dark green to medium green, fine grained altered serpentinized peridotite. 123' - 120' rich in pyroxene grading into increasing amounts of feldspar within a serpentine-pyroxene-olivine mass. (10-20% Feldspar). <u>145-155</u> very fine diss. po. and minor cp. associated with Feldspars. Less than 1%.
155	176	<u>Massive Dacite:</u> Medium grey, aphanitic massive dacite.

FNM 35-10-68

FALCONBRIDGE NICKEL MINES LIMITED
DIAMOND DRILL LOG

LOCATION L24E - 1S BEARING North HOLE NO. G-4-70
 LOGGED BY D. R. Bell ELEVATION _____ DIP 50 PROPERTY Galata Option
 STARTED _____ TESTS (CORRECTED) _____
 FINISHED _____
 CASING _____
 CORE SIZE _____

FROM	TO	DESCRIPTION
176	208	<p><u>Serpentinized Peridotite:</u> Dark green, finegrained, serpentinized peridotite. <u>176-177.3</u> Diss. py. 2-4% in a fine grained talcose ultramafic. <u>177.3'</u> 1" seam of chloritic trap material at 50 degrees to core. <u>181-182.5</u> 1% diss. blebs. of Po.</p>
208	239	<p><u>Diabase:</u> Dark green, fine grained hornblende, feldspar, olivine, quartz (diabase). Weakly magnetic with fine disseminated blebs of magnetite.</p>
239	249	<p><u>Dacite Porphyry:</u> Brownish grey, aphanitic, white feldspar porphyry. <u>243-244.5</u> Serpentine inclusion.</p>
249	259	<p><u>Diabase:</u> Dark green, fine grained.</p>

FNM 35-10-66

FALCONBRIDGE NICKEL MINES LIMITEDDIAMOND DRILL LOG

LOCATION L24E - 1S BEARING North HOLE NO. G-4-70
 LOGGED BY D.R.Bell ELEVATION _____ DIP -50 PROPERTY Galata Option
 STARTED _____ TESTS (CORRECTED) _____
 FINISHED _____
 CASING _____
 CORE SIZE _____

FROM	TO	DESCRIPTION
259	303	<u>Massive Dacite:</u> Medium grey, fine grained to aphanitic dacite. <u>281-282.5</u> Serpentinized inclusion. <u>271-281</u> Feldspar porphyry. <u>266.5-270.5</u> Biotite rich dacite schist. 2-5% disseminated blebs of Po. Serpentine slips and inclusions scattered towards lower contact from 285'.
303	333	<u>Serpentinized Peridotite:</u> Dark green, fine to medium grained serpentinized peridotite. Very fine grained disseminated Po. throughout mass 0.5 to 1%. Very fine diss. and streaks of magnetite about the olivine and pyroxene.
	333	<u>End of Hole.</u>

FALCONBRIDGE NICKEL MINES LIMITED**DIAMOND DRILL LOG**

LOCATION L10E - 4+50S BEARING 25 E of N. HOLE NO G-5-70
 LOGGED BY D.R. Bell ELEVATION Surface DIP -50 PROPERTY Galata Option.
 STARTED Jan. 31, 1970 TESTS (CORRECTED)
 FINISHED Feb. 7, 1970 200' @ 50 degrees.
 CASING 16' 400' @ 49 degrees.
 CORE SIZE A. X. T. 600' @ 48 degrees.

FROM	TO	Mag. Prop.	Summary. DESCRIPTION
0	16		Overburden.
16	33.5	M.-S.M.	Serpentinized Peridotite.
33.5	83.5	N.M.	Foliated Dacite.
83.5	320	W.-S.M.	Serpentinized Peridotite.
320	391	N.M.	Massive Rhyodacite.
391	569	N.M.	Granodiorite.
569	587.5	N.M.-W.M.	Serpentinized Ultramafic.
587.5	741	N.M.	Granodiorite.
	741		<u>End of Hole.</u>
<p><u>Results:</u> Mag. high is the result of magnetite in Serpentinites. <u>Out of Phase</u> E.M. results possibly due to diss. py. in Serpentinite from 569' - 587.5', 2-5%.</p>			

FNM 35-10-66

FALCONBRIDGE NICKEL MINES LIMITED

DIAMOND DRILL LOG

LOCATION L10E - 4+50S BEARING 25 E of N. HOLE NO. G-5-70
 LOGGED BY D.R.Bell ELEVATION Surface DIP -50 PROPERTY Galata Option
 STARTED Jan. 31, 1970 TESTS (CORRECTED)
 FINISHED Feb. 7, 1970 200' @ 50 degrees.
 CASING 16' 400' @ 49 degrees.
 CORE SIZE A.X.T. 600' @ 48 degrees.

FROM	TO	DETAILED DESCRIPTION
0	16	<u>Overburden:</u> sand and gravel.
16	33.5	<u>Serpentinized Peridotite:</u> Blackish-green, fine grained, serpentinized peridotite. <u>23 - 25</u> Feldspar - carbonate fracturing. Scattered very fine diss. po., 0.5% throughout mass. <u>33 - 35.5</u> medium green, carbonitized contact. Contact at 25 degrees.
33.5	83.5	<u>Foliated Rhyodacite:</u> Medium grey, aphanitic, foliated rhyodacite. Few scattered diss. slips of Po. throughout mass less than 1%. Foliation - 37' @ 45 degrees. 47' @ 60 degrees.
83.5	320	<u>Serpentinized Peridotite:</u> Dark green, fine to medium grained, serpentinized peridotite. Sharp serpentinized contact at 55 degrees. <u>86.4 - 88'</u> 3-5% diss. Po. <u>88' - 90'</u> 1-2% diss. Po.

FNM 35-10-66

FALCONBRIDGE NICKEL MINES LIMITED

DIAMOND DRILL LOG

LOCATION L10E - 4+50S BEARING 25 E of N. HOLE NO. G-5-70

LOGGED BY D.R. Bell ELEVATION Surface DIP 50 PROPERTY Galata Option

STARTED _____ TESTS (CORRECTED)

FINISHED _____

CASING _____

CORE SIZE _____

FROM	TO	DESCRIPTION
83.5	320	<p><u>Serpentinized Peridotite: (Cont.)</u></p> <p>Mass is fractured by many serpentine-carbonate veins.</p> <p><u>120' - 124.5'</u> Fractured felsic inclusion.</p> <p><u>114.5' - 116'</u> 1-2% very fine diss. po. Very fine diss. po. scattered throughout mass, less than 0.5%.</p> <p><u>170' - 174'</u> Badly fractured, broken and serpentinized ground. <u>Possible Fault?</u></p> <p><u>182'</u> Banding or foliation suggested at 35 degrees.</p> <p><u>200' - 265'</u> Highly serpentinized mass and badly broken ground.</p> <p><u>301' - 318'</u> Badly broken ground.</p> <p><u>316' - 317.5'</u> Lost Core.</p>
320	391	<p><u>Massive Rhyodacite:</u></p> <p>Medium grey, aphanitic, massive rhyodacite.</p> <p>Serpentine inclusion at 323.5' - 325'. Lower contact is metamorphosed with blue quartz phenocrysts appearing.</p>

FNM 35-10-66

FALCONBRIDGE NICKEL MINES LIMITED
DIAMOND DRILL LOG

LOCATION L10E - 4+50S BEARING 25 E of N HOLE NO. G-5-70
 LOGGED BY D.R.Bell ELEVATION _____ DIP -50 PROPERTY Galata Option.
 STARTED _____ TESTS (CORRECTED) _____
 FINISHED _____
 CASING _____
 CORE SIZE _____

FROM	TO	DESCRIPTION
391	569	<p><u>Granodiorite:</u> Greyish-green, quartz (5-10%), Feldspar. (Orthocluse 10-15%, plagiocluse 5-10%), amphibole 50-60%, Medium to course grained Graniodiorite. Slight foliation indicated from 400' - 450'. 400' @ 50 degrees. 410' @ 35 degrees. 420' @ 45 degrees. 430' @ 40 degrees. 440' @ 40 degrees. 450' @ 45 degrees. <u>422' - 426'</u> Rhyodacite inclusion with minor granodiorite inclusions. <u>491' - 504'</u> Feldspar porphyry, light grey-brown aphanitic ground mass.</p>
569	587.5	<p><u>Serpentinized Ultramafic:</u> Dark black-green, fine grained, serpentized talcose mass. Diss. cube pyrite 2-5% throughout mass. Non Magnetic to weakly magnetic.</p>

FNM 35-10-66

FALCONBRIDGE NICKEL MINES LIMITED
DIAMOND DRILL LOG

LOCATION L10E - 4+50S BEARING 25 E of N HOLE NO. G-5-70
 LOGGED BY D. R. Bell ELEVATION _____ DIP -50 PROPERTY Galata Option.
 STARTED _____ TESTS (CORRECTED) _____
 FINISHED _____
 CASING _____
 CORE SIZE _____

FROM	TO	DESCRIPTION
585.5	741	<p><u>Granodiorite:</u> Greyish-green, medium grained granodiorite. Contact from 585.5' - 608' is altered grey fine grained chloritized granite mass grading into the medium grained granodiorite.</p>
	741	<p><u>End of Hole:</u></p>

FNM 35-10-66

FALCONBRIDGE NICKEL MINES LIMITEDDIAMOND DRILL LOGLOCATION L22E - 5s BEARING North HOLE NO. G-6-70LOGGED BY D. Meunier ELEVATION Surface DIP 50 PROPERTY Galata OptionSTARTED Feb. 10, 1970 TESTS (CORRECTED) degreesFINISHED Feb. 24, 1970CASING 16'200' @ 50 degrees600' @ 49 degreesCORE SIZE A.X.T.

FROM	TO	Mag. Prop.	DESCRIPTION
0	16'		Overburden - sand gravel.
16'	43.8'	N.M.	Rhyolite Porphyry
43.8'	93.4'	N.M.	Dacite
93.4	134.6		"Quartz Diabase"
134.6	178.5		Peridotite
178.5	192.1		Dacite Porphyry
192.1	197.1		Serpentinized Peridotite
197.1	279.1	N.M.	Rhyolite Porphyry.
279.1	380	N.M.	Peridotite
380	398.1	N.M.	Dacite
398.1	713	W.M.	Peridotite

FNM 35-10-66

FALCONBRIDGE NICKEL MINES LIMITEDDIAMOND DRILL LOG

LOCATION L-22E-58 BEARING North HOLE NO. G-6-70
 LOGGED BY D. Meunier ELEVATION Surface DIP 50 PROPERTY Galata Option
 STARTED Feb. 10/70 TESTS ^{degrees} (CORRECTED)
 FINISHED Feb. 24/70
 CASING 16'
 CORE SIZE A.X.T.

FROM	TO	DESCRIPTION
0'	16'	Overburden - Sand - Gravel
16'	43.8'	Rhyolite Porphyry. Consisting of quartz and feldspar phenocrysts in a light grey brown fine grained matrix. 21' foliation suggested at 30 degrees to core.
		17-18.9 Ultramafic inclusion containing 25.3 - 34.2 few widely scattered flakes of Po. Less than .5% of mass. Sharp lower contact.
43.8'	93.4'	Dacite. Light to dark grey fine grained to aphanitic dacite containing many stringers of chlorite cutting across core at various angles. Also containing few quartz carbonate veinlets from 2-4 mm in width.
		67 - 69.1 - Ultramafic inclusion containing small blebs of Po. scattered throughout mass.
93.4'	134.6	"Quartz. Diabase" Light to dark green medium grained hornblend and feldspar olivine quartz diabase. Also contains few scattered stringers of quartz feldspar and quartz carbonate veins.
		128.6' - Foliation suggested at 30 degrees to core

FNM 35-10-66

FALCONBRIDGE NICKEL MINES LIMITED**DIAMOND DRILL LOG**

LOCATION L-22E-5s BEARING North HOLE NO. 0-6-70
 LOGGED BY D. Meunier ELEVATION Surface DIP -50 PROPERTY Galata Option
 STARTED Feb. 10/70 TESTS (CORRECTED)
 FINISHED Feb. 24/70
 CASING 16'
 CORE SIZE A.X.T.

FROM	TO	DESCRIPTION
134.6'	178.5	Peridotite Light to dark green medium grained peridotite. Very fine Diss Po. from 134 - 139'. Sharp lower contact at 60 degrees to core.
178.5'	192.1'	Dacite Porphyry: Light grey to brown fine grained to aphanitic dacite with porphyritic texture in places. Contains fine diss patches of pyrite through mass. Less than .5% of mass. 192.1 - 197.1 Light green, fine to medium grained serpentized peridotite.
197.1	279.1	Rhyolite porphyry: Consisting of quartz feldspar phenocrysts in a light grey to brown fine grained matrix. Also contains minor amounts of Pyrite and Po. Less than .5% of mass sharp lower contact. 209' Foliation at 60 degrees to core 240.9' foliation at 65 degrees to core. 262.5 foliation at 70 degrees to core. 278.6 foliation at 60 degrees to core.

FNM 35-10-66

FALCONBRIDGE NICKEL MINES LIMITEDDIAMOND DRILL LOG

LOCATION L-22E-5e BEARING North HOLE NO. G-6-70
 LOGGED BY B. Meunier ELEVATION Surface DIP 50 PROPERTY Galata Option
 STARTED Feb. 10/70 TESTS ^{degrees} (CORRECTED)
 FINISHED Feb. 24/70
 CASING A.X.T.
 CORE SIZE _____

FROM	TO	DESCRIPTION
279.1'	380'	240.4 - 240.8 - Minor inclusion of medium grained serpentized Peridotite. Peridotite: Dark fine grained Peridotite (pyroxenite?) containing small blebs of Po, along slip planes and minor amounts of pyrite. Less than $\frac{1}{2}\%$ of mass. 297.3 - 302.6 Porphyry inclusion containing quartz feldspar phenocrysts in a dark green to brown fine grained matrix.
380'	398.1	Dacite: Light grey green fine grained to aphanitic rock containing quartz. Carbonate inclusion at upper contact. Lower contact - sharp and at 60 degrees to core.
398.1	713'	Peridotite. Dark fine grained containing minor amts. of Po. and Pyrite. Less than .5% of mass. 531-534 Dark black green fine grained to aphanitic serpentized talcose. 475-505' many quartz feldspar stringers cutting across core at various

FALCONBRIDGE NICKEL MINES LIMITED
DIAMOND DRILL LOG

LOCATION L-22E-5s BEARING North HOLE NO. G-6-70
 LOGGED BY D. Meunier ELEVATION Surface DIP 50 PROPERTY Galata Option
 STARTED Feb. 10/70 TESTS ^{degrees} (CORRECTED)
 FINISHED Feb. 24/70
 CASING 16'
 CORE SIZE A.X.T.

FROM	TO	DESCRIPTION
		angles. 631.6 - 639.7 Porphyritic inclusions containing quartz and some feldspar phenocrysts in greyish green fine grained matrix. 707 - 713' - Very blocky ground. 428' Foliation at 60 degrees to core. 463' " " 35 " " " 517' " " 30 " " " 700.5' " " 45 " " "
713'		End of Hole.

FALCONBRIDGE NICKEL MINES LIMITED
DIAMOND DRILL LOG

LOCATION L20E - IN BEARING North HOLE NO. C-7-70
 LOGGED BY D.R. Bell ELEVATION Surface DIP 50 PROPERTY Lease Option
 STARTED February 26, 1970 TESTS (CONNECTED)
 FINISHED March 1, 1970
 CASING 13' 200' @ 50 degrees.
 CORE SIZE A.X.T.

FROM	TO	Mag. Prop.	DESCRIPTION
			<u>Summary</u>
0	13		Overburden:
13	184	W.M.	Diabase:
184	202	W.M.	Serpentinized Dunite:
202	281	W.M. S.M.	Serpentinized Peridotite:
281	380	M.-S.M.	Serpentinized Peridotite.
	380		<u>End of Hole:</u>
			 <u>Results:</u> <u>Weak E.M. conductor</u> due to Minor streaks of graphite along slip planes. 202' - 213'.

FNM 35-10-66

FALCONBRIDGE NICKEL MINES LIMITEDDIAMOND DRILL LOG

LOCATION L20E - IN BEARING North HOLE NO. G-7-70
 LOGGED BY D. R. Bell ELEVATION Surface DIP 50 PROPERTY Galata Option.
 STARTED Feb. 26, 1970 TESTS (CORRECTED)
 FINISHED Mar. 1, 1970
 CASING 13'
 CORE SIZE A.X.T.

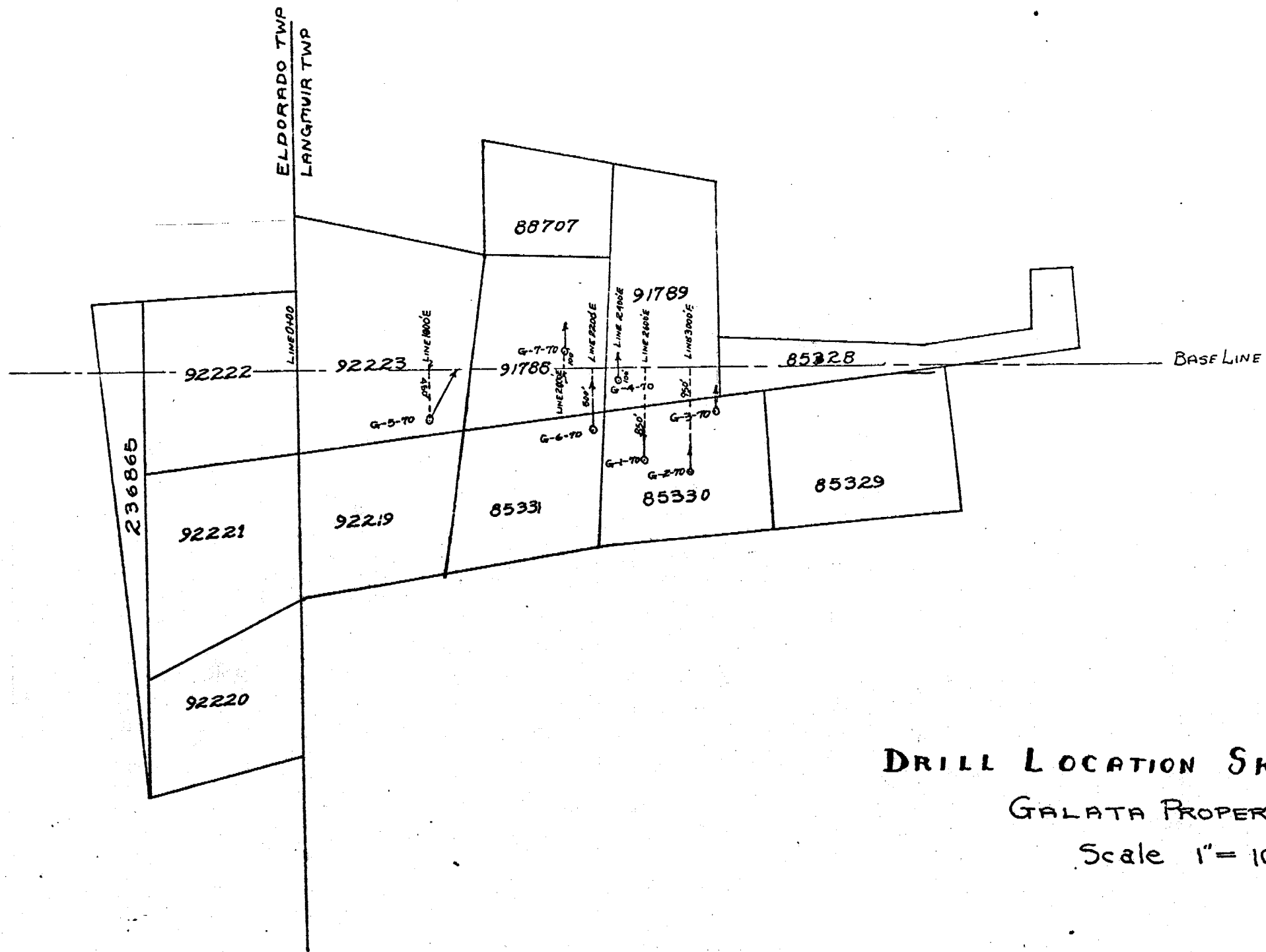
FROM	TO	DESCRIPTION
		<u>Detailed.</u>
0	13'	<u>Overburden:</u> sand and gravel.
13'	184'	<u>Diabase:</u> Dark green, fine to medium grained diabase containing plagioclase feldspar, pyroxene, and olivine. Slight foliation suggested at 76' at 40 degrees and at 141' at 55 degrees. 180.5' - 182.5' core missing.
184'	202'	<u>Serpentinized Dunite:</u> Medium green, badly broken serpentinized possible dunite. Many serpentine veins scattered through mass with very fine associated asbestose fiber. Most of the veining is at 65 degrees - 70 degrees to core. 180' - 202' badly broken ground.
202'	380'	<u>Serpentinized Peridotite:</u> Medium to dark green, fine grained serpentinized peridotite. Fewer serpentine veins and more pyroxene associated with ground mass. Magnetite is associated about the grain mass as fine stringers

FNM 35-10-66

FALCONBRIDGE NICKEL MINES LIMITED
DIAMOND DRILL LOG

LOCATION L20E IN BEARING North HOLE NO. 6-7-70
 LOGGED BY D. R. Bell ELEVATION _____ DIP 50 PROPERTY Galata Option
 STARTED _____ TESTS ^{degrees} (CORRECTED)
 FINISHED _____
 CASING _____
 CORE SIZE _____

FROM	TO	DESCRIPTION
202	380'	<p><u>Serpentinized Peridotite:</u> (Cont'd) and blebs, but also as massive stringers in serpentine veins. Few scattered, brownish-green remanent pyroxene crystals.</p> <p><u>202' - 213'</u> Minor streaks of graphite along slip planes. No visible sulphides, Graphite 1-3% mass.</p> <p><u>281' - 380'</u> Serpentinized mass has an increase of feldspar within the rock unite 10-20% by mass. Very fine diss. pyrite throughout mass from trace to 0.5% in small patches.</p>
	380'	<u>End of Hole:</u>



DRILL LOCATION SKETCH MAP

GALATA PROPERTY

Scale 1" = 1000'

DIAMOND DRILL HOLE SKETCH MAP

GALATA PROPERTY

Scale 1"=200'



P 92223

P 91788

P 91789

G-7-70
-50° North
Depth 388'

G-6-70
-30° North
Depth 335'

G-5-70
-40° North
Depth 241'

G-4-70
-50° North
Depth 242'
Elevation 18533.1

G-3-70
-43° North
Depth 362'

P 85330

P 85331

G-1-70
-50° North
Depth 316'

G-2-70
-50° North
Depth 324'

LANGMUIR TWP.
ELDORADO TWP.



42A065E1853 30 LANGMUIR