

2. 26596



Ministry of Northern Development and Mines

Ministère du Développement du Nord et des Mines

Diamond Journal de Drilling forage au diamant Log

Complete this form and related sketch in duplicate. Remplir en deux exemplaires la présente formule et le croquis associé.

Fill in on every page. Remplir ces cases à chaque page.

Hole No. Forage n°: L-03-02
Page No. Page n°: 1

Drilling Company Compagnie de forage	Collar Elevation Élévation du collier 0	Length of Hole from true North Longueur du trou par rapport au nord vrai	Total Footage Avancement total de forage 183m	Dip of Hole at inclination of forage Cote d'inclinaison 90°	Address location where core stored Adresse d'endroit où la carotte est stockée Redstone Mine Property Eldorado Twp	Map Reference No. N° de référence sur la carte	Claim No. N° de concession minière 1248462
Date Hole Started Date de commencement de forage Oct 18, 2003	Date Completed Date d'achèvement Oct 27, 2003	Date Logged Date d'inscription au journal Oct 28/03	Logged by Inscrit par Ed Ludwig	183m @ 90°		Location (Twp, Lot, Con. or Lat. and Long.) Emplacement (canton, lot, concession, ou latitude et longitude) Langmuir Twp Grid: BL-0+45E	
Exploration Co., Owner or Operator Compagnie d'exploration, propriétaire ou titulaire d'option Liberty Mineral Exploration		Date Submitted Date de dépôt	Submitted by (Signature) Déposé par (signature)	PLM PLM PLM		Property Name Nom de la propriété McWatters	

Footage/Avancement		Rock Type Type de roche	Description (Colour, grain size, texture, minerals, alteration, etc.) Description (Couleur, granulométrie, texture, minéraux, transformation, etc.)	Photo Taken Date/Length of core Date	Core Number Longueur du noyau par mètre passe	Core Sample No. N° d'échantillon de provenance	Sample Footage/Avancement de l'échantillon (en pieds)	Sample Length Longueur de l'échantillon	Analysis / Analyse minéralogiques
0	11m	Overburden							
11m	18.5m	Rhyolite	- Gray to brick red sections over 20-30cm - Non magnetic, occ. diss. py - fine grained - fracture orientation 45° to C.A. - Broken formation						
18.5m	18.87m	Fault Gouge	- Extremely ground up talc material - very soft H:1 - white						
18.87	21.5	Ultramafic Flow	- Strongly magnetic, dark green, med grained - acc. cube py. - no carb - becomes lighter for last 1/2 metre and non-magnetic - H:4.0						
21.5	25.66	Talc	- magnesite material, white-gray, soft H:1.5 - gouge @ 23.5						

* For features such as foliation, bedding, schistosity, measured from the long axis of the core.
* Exemples de caractéristiques : foliation, schistosité, stratification. L'angle est mesuré par rapport à l'axe longitudinal de la carotte.

† Additional credit available. See Assessment Work Regulation.
† Des crédits supplémentaires sont offerts. Consulter les règlements relatifs aux travaux d'évaluation.
Note: Dans cette formule, lorsqu'il désigne une personne, le masculin est utilisé au sens large.



42A06SE2017 2.26596 LANGMUIR

010

RECEIVED
NOV - 7 2003
GEOSCIENCE ASSESSMENT
OFFICE



Ministry of
Northern Development
and Mines
Ontario

Ministère du
Développement du Nord
et des Mines

**Diamond Journal de
Drilling forage au
Log forage au
diamant**

Complete this form and
related sketch in duplicate.
Remplir en deux exemplaires la
présente formule et le croquis associé

Fill in on every page
Remplir ces cases à
chaque page

Hole No.
Forage n°
L-03-02
Page
Page
2

Drilling Company Compagnie de forage		Collar Elevation Élévation de collier	Beginning of hole from true North/Eastion du forage par rapport au nord vrai	Total Footage Avancement total du forage	Dip of Hole at Inclinaison du forage au Colerizable	Address/Location where core stored Adresse/endroit où la carote est stockée	Map Reference No. N° de référence sur la carte	Claim No. N° de concession minière 1248462
Date Hole Started Date de commencement du forage	Date Completed Date d'achèvement	Date Logged Date d'inscription au journa	Logged by Inscrit par		M.P.M. M.P.M. M.P.M. M.P.M.	Location (Twp, Lot, Con. or Lot, and Long.) Emplacement (canton, lot, concession, ou latitude et longitude) Langmuir Twp.		
Exploration Co., Owner or Optionee Compagnie d'exploration, propriétaire ou titulaire d'option Liberty Mineral Exploration		Date Submitted Date de dépôt	Submitted by (Signature) Déposé par (signature)			Property Name Nom de la propriété		

Footage/Avancement		Rock Type Type de roche	Description (Colour, grain size, texture, minerals, alteration, etc.) Description (Couleur, granulométrie, texture, minéraux, transformation, etc.)	Flow (mm) Angle (deg) de enclassement gouge	Core Diameter Percage (mm) ou plus des autres diamètres	Flow Sample No. N° d'échantillon du percement	Sample Footage/End of pro- fondeur de l'échantillon (m) Footage	Sample Length Longueur de l'échantillon	Assays †/Analyses minéralogique
25.66m	51.2m	Ultramafic Flow	- altered to talc-chlorite schist, dark green, strongly magnetic - med to fine grained. - occ whispl carb. stringer - broken core and fault gouge from 32.55 - 36.0m - core recovery only 80% Hardness - 3-4 - unit completely mineralized with up to 2% diss sulfides - py, po, pentlandite.						
52.1	55.1	Andesite	(fine grained flow - part of above unit?) - non magnetic, med grained chlorite and actinolite crystals - trace to 1% diss py						
55.1	143m	Ultramafic Flow	- as above - becomes massive unit strongly magnetic, dark green - Hardness - 4-4.5 - occ qtz-carb stringer						

6804 (02/91)

*For features such as foliation, bedding, schistosity, measured from the long axis of the core.

*Exemples de caractéristiques : foliation, schistosité, stratification. L'angle est mesuré par rapport à l'axe longitudinal de la carote.

† Additional credit available. See Assessment Work Regulation.

† Des crédits supplémentaires sont offerts. Consulter les règlements relatifs aux travaux d'évaluation.

Note: Dans cette formule, lorsqu'il désigne des paramètres, le mesurage est utilisé au sens restrictif.



Ministry of
Northern Development
and Mines

Ministère du
Développement du Nord
et des Mines

**Diamond Journal de
Drilling forage au
Log diamant**

Complete this form and
related sketch in duplicate.
Remplir en deux exemplaires le
présente formulaire et le croquis associé

Fill in on every page
Remplir ces cases à
chaque page

File No
Fichier n°
L-08-02

Page No.
Page n°
3

Drilling Company Compagnie de forage		Collar Elevation Élévation du collier	Depth of hole from true horizontal du forage par rapport au nord vrai	Total Footage Avancement total du forage	Dip of Hole et Inclinaison du forage au Collar (mètre)	Address location where core stored Adresse/endroit où la carotte est stockée	Map Reference No. N° de référence sur la carte	Claim No. N° de concession minière 1248462
Date Hole Started Date des commencement du forage	Date Completed Date d'achèvement	Date Logged Date d'inscription au journal	Logged by Inscrit par		Location (Twp, Lot, Con. or Lat. and Long.) Emplacement (Canton, lot, concession, ou latitude et longitude) Langmuir Twp.			
Explosives Co., Owner or Options Compagnie d'explosifs, propriétaire ou titulaire d'option		Date Submitted Date de dépôt	Submitted by (Signature) Déposé par (signature)					
Liberty Mineral Exploration								

Footage/Avancement From/De	To/A	Rock Type Type de roche	Description (Colour, grain size, texture, minerals, alteration, etc.) Description (Couleur, granulométrie, texture, minéraux, transformation, etc.)	Flow marks signatures de contaminants graves	Core Interval Niveau 1/Avance et plus des autres profondeurs	Core Sample No. n° d'échantillon de la carotte	Sample Footage/Interval de pré- levement de l'échantillon (en pieds)	Sample Length Longueur de l'échantillon	Assays / Analyses minéralogiques
55.1	143m	Con't	- unit contains on average 1.5% sulfides - visible magnetite grains - occ 3-5cm vein of massive sulfides - 80% - sulfides in order of quantity Py, Po, Pentlandite - narrow 5cm quartz-carb veins at no preferred orientation * 140-143 - massive sulfides - in veins - 141.5-143 - massive - 100% - Pyrite, Po & Pentlandite - traces of Millerite						
143m	160	Dacite	- Altered to pea green near upper 1m of contact - fine grained, hard - grades to light gray near lower contact.						
160	183	Ultramafic Flw	- Un mineralized, dark green, med. grained. - weakly magnetic, massive - H: 4-5						
	183	E.O.H.							

8294 (03/79)

* For features such as foliation, bedding, schistosity, measured from the long axis of the core.
* Exemples de caractéristiques : foliation, schistosité, stratification. L'angle est mesuré par rapport à l'axe longitudinal de la carotte.

† Additional credit available. See Assessment Work Regulation.
† Des crédits supplémentaires sont offerts. Consulter les règlements relatifs aux travaux d'évaluation.
Note: Dans cette formule, lorsqu'il détermine des personnes, le masculin est utilisé au sens neutre.



Ministry of
Northern Development
and Mines

Ministère du
Développement du Nord
et des Mines

**Diamond Journal de
Drilling forage au
Log forage au
diamant**

Complete this form and
related sketch in duplicate.
Remplir ces cases et le croquis associé

Fill in on every page
Remplir ces cases à
chaque page

Hole No. Forage n°	Page No. Page n°
L-03-03	1

Drilling Company Compagnie de forage	Core Elevation Élévation du carter 0	Bearing of hole from true North/Position du forage par rapport au vrai nord 340	Total Footage Avancement total du forage 140m	Dip of Hole at inclinaison du forage en Catherine 75	Address/Location where core stored Adresse/endroit où le carter est stocké Redstone Mine Property Eldorado Twp	Map Reference No. N° de référence sur la carte	Claim No. N° de concession minière 1248462	
Date Hole Started Date de commencement du forage Oct 24, 2003	Date Completed Date d'achèvement Oct 27, 2003	Date Logged Date d'inscription au journal Oct 31/03	Logged by inscrit par Ed Ludwig	140mm 74		Location (Twp, Lot, Con. or Lat. and Long.) Emplacement (canton, lot, concession, ou latitude et longitude) Langmuir Twp. Grid: BL, 0+45E	Property Name Nom de la propriété McWatters	
Exploration Co., Owner or Options Compagnie d'exploration, propriétaire ou titulaire d'option Liberty Mineral Exploration		Date Submitted Date de dépôt	Submitted by (Signature) Déposé par (signature)	n/a			n/a	n/a

Footage/Avancement		Rock Type Type de roche	Description (Colour, grain size, texture, minerals, alteration, etc.) Description (Couleur, granulométrie, texture, minéraux, transformation, etc.)	How many logs depth the completeness est	How broken chunks (Lump or pile of small pieces)	How Sample No. N° d'échantillon de prospecteur	Sample Description or Description de l'échantillon (par pièce)		Sample Length Longueur de l'échantillon	Assays †/Analyses minéralogiques	
From/De	To/À						From/De	To/À			
0	12m	Overburden	- Casing								
12m	21m	Rhyolite	- Gray with narrow brick red sections - 20-30cms - non magnetic, Hard - extremely broken formation								
21	140	Ultramafic Flow	- Dark green, strongly magnetic - Hardness 40 - upper contact is gradation with fault gouge between 21 and 23.21 very ground talc - - mineralized with up to 2% sulfides from 21-92.5 metres. @ 92.5 - 93.11 - fault gouge 93.11 - 140 - unmineralized ultramafic flow - non-magnetic at upper contact then becomes weakly magnetic on average.								
	140	EOH									

800 (905)

* For features such as foliation, bedding, schistosity, measured from the long axis of the core.
* Exemples de caractéristiques : foliation, schistosité, stratification. L'angle est mesuré par rapport à l'axe longitudinal de la carotte.

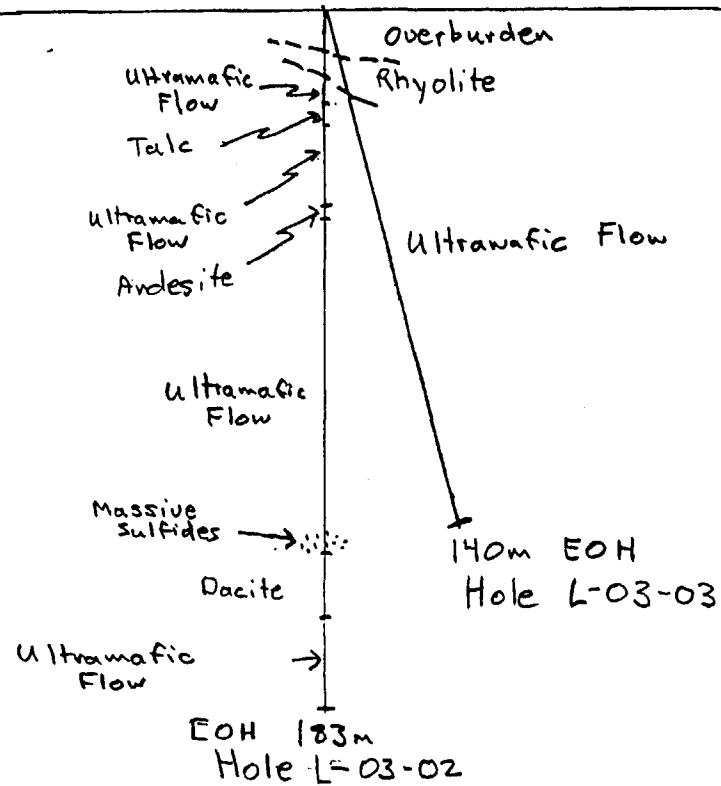
† Additional credit available. See Assessment Work Regulation.
† Des crédits supplémentaires sont offerts. Consulter les règlements relatifs aux travaux d'évaluation.
Note: Dans cette formule, les "n" désignent des processus, le "m" est utilisé au sens large.



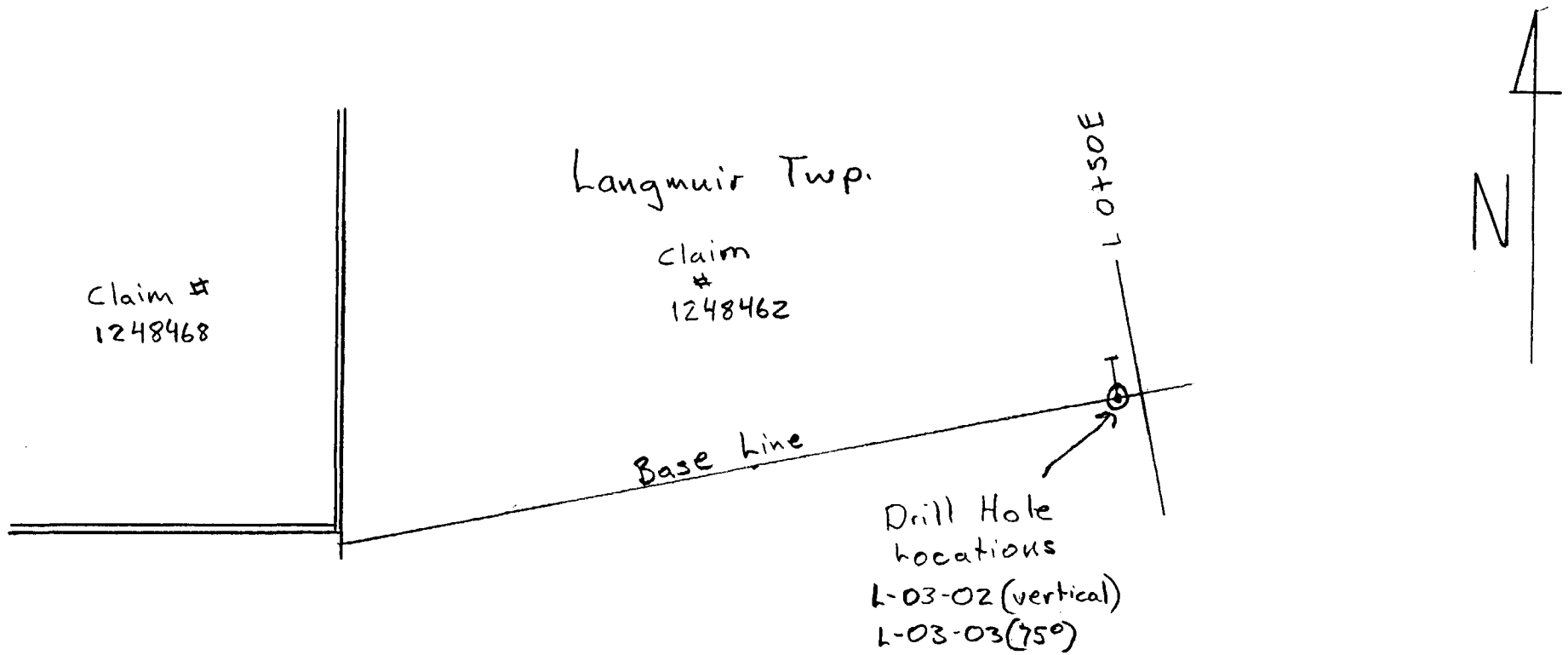
S

Looking West
Langmuir TWP

N



Liberty Mineral Exploration
 McWatters Project
 Drill Section: L-03-02 + L-03-03
 Nov. 1, 2003
 Scale: 1cm = 20m
 By: Edward Ludwig
 Claim # 1248462



Liberty Mineral Exploration

McWatters Project

Drill Hole Location Plan

Holes: L-03-02 + L-03-03

Nov. 1, 2003

1cm = 20m

By: E. Ludwig

Ministry of
Northern Development
and Mines

Ministère du
Développement du Nord
et des Mines



Date: 2003-NOV-21

GEOSCIENCE ASSESSMENT OFFICE
933 RAMSEY LAKE ROAD, 6th FLOOR
SUDBURY, ONTARIO
P3E 6B5

2004428 ONTARIO INC.
12TH FLOOR-20 TORONTO ST
TORONTO, ONTARIO
M5C 2B8 CANADA

Tel: (888) 415-9845
Fax: (877) 670-1555

Submission Number: 2.26596
Transaction Number(s): W0360.01746

Dear Sir or Madam

Subject: Approval of Assessment Work

We have approved your Assessment Work Submission with the above noted Transaction Number(s). The attached Work Report Summary indicates the results of the approval.

At the discretion of the Ministry, the assessment work performed on the mining lands noted in this work report may be subject to inspection and/or investigation at any time.

If you have any question regarding this correspondence, please contact STEVEN BENETEAU by email at steve.beneteau@ndm.gov.on.ca or by phone at (705) 670-5855.

Yours Sincerely,

A handwritten signature in black ink that reads "Ron C Gashinski".

Ron C. Gashinski
Senior Manager, Mining Lands Section

Cc: Resident Geologist

Steven Dean Anderson
(Claim Holder)

2004428 Ontario Inc.
(Assessment Office)

Assessment File Library

2004428 Ontario Inc.
(Claim Holder)



42A06SE2017 2.26596 LANGMUIR

200

ONTARIO CANADA

MINISTRY OF NORTHERN DEVELOPMENT AND MINES
PROVINCIAL MINING RECORDERS' OFFICE

Mining Land Tenure Map

Date / Time of Issue: Fri Nov 21 09:52:10 EST 2003

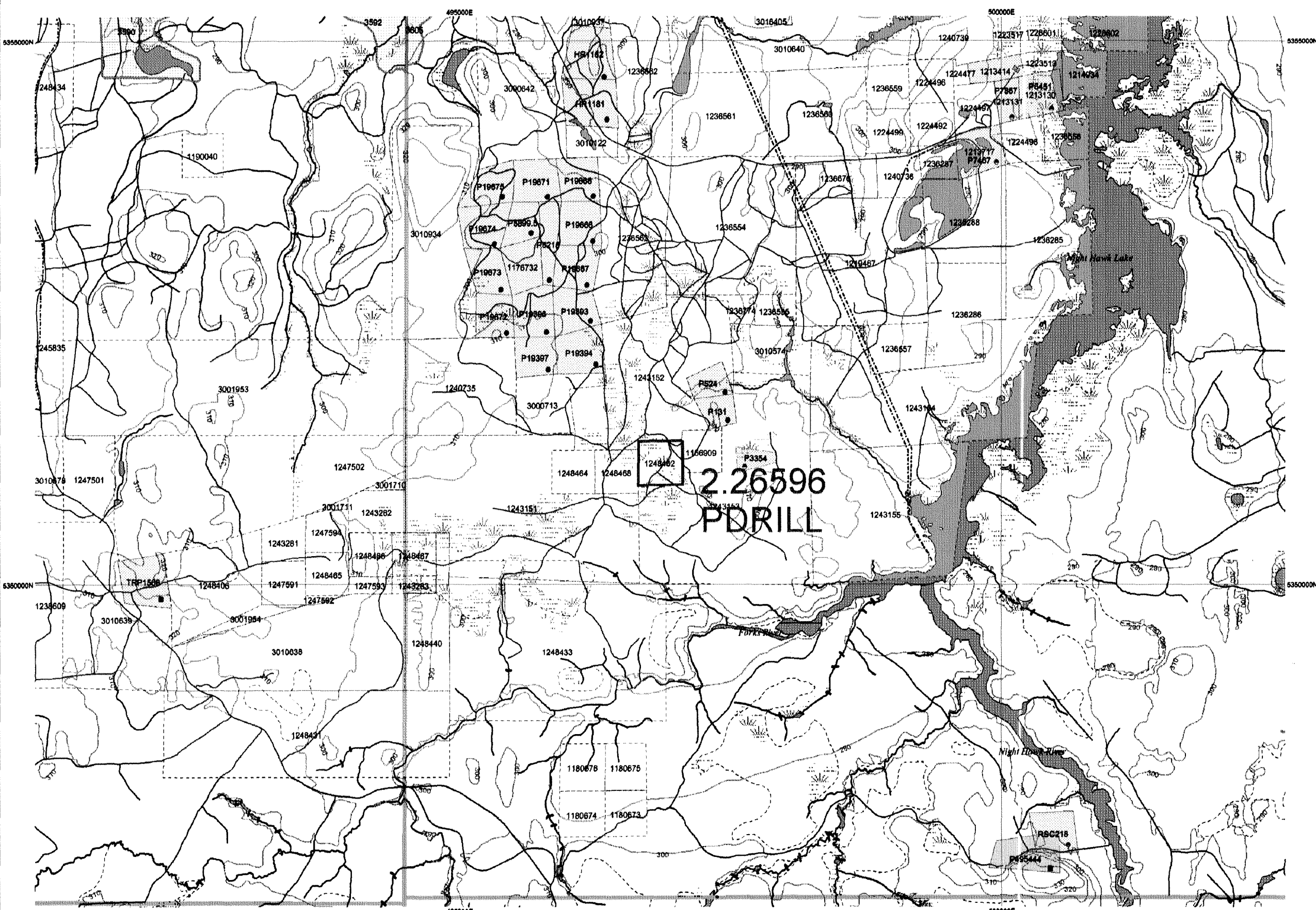
TOWNSHIP / AREA
LANGMUIR

PLAN
G-3226

ADMINISTRATIVE DISTRICTS / DIVISIONS

Mining Division
Land Titles/Registry Division
Ministry of Natural Resources District

Porcupine
Unavailable
Unavailable

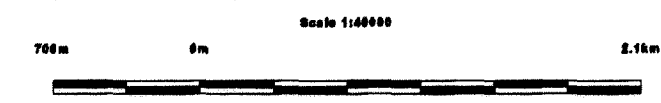
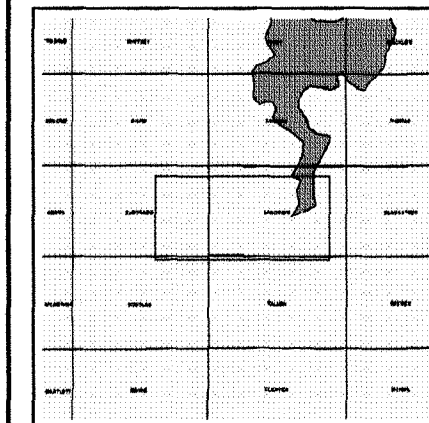


TOPOGRAPHIC

- Administrative Boundaries
- Township
- Concession Lot
- Provincial Park
- Indian Reserve
- Cliff, Pit & Pile
- Contour
- Mine Shaft
- Mine Headframe
- Railway
- Road
- Trail
- Natural Gas Pipeline
- Utilities
- Tower

Land Tenure

- Freehold Patent**
 - Surface And Mining Rights
 - Surface Rights Only
 - Mining Rights Only
- Leasehold Patent**
 - Surface And Mining Rights
 - Surface Rights Only
 - Mining Rights Only
- Licence of Occupation**
 - Uses Not Specified
 - Surface And Mining Rights
 - Surface Rights Only
 - Mining Rights Only
- Land Use Permit**
 - Order in Council (Not open for staking)
- Water Power Lease Agreement**
 - Mining Claim
 - Filled Only Mining Claims
- LAND TENURE WITHDRAWALS**
 - Areas Withdrawn from Disposition
 - Mining Acts Withdrawal Types**
 - Surface And Mining Rights Withdrawn
 - Surface Rights Only Withdrawn
 - Mining Rights Only Withdrawn
 - Order in Council Withdrawal Types**
 - Surface And Mining Rights Withdrawn
 - Surface Rights Only Withdrawn
 - Mining Rights Only Withdrawn
- IMPORTANT NOTICES**
 - No



LAND TENURE WITHDRAWAL DESCRIPTIONS

Identifier	Type	Date	Description
3588	Wsm	Jan 1, 2001	FLOODING RIGHTS ON NIGHT HAWK LAKE TO THE CONTOUR ELEVATION 600.
3590	Wsm	Jan 1, 2001	DUCKS UNLIMITED - PENDING APPLICATION UNDER THE PUBLIC LANDS ACT
3592	Ws	Jan 1, 2001	DUCKS UNLIMITED - PENDING APPLICATION UNDER THE PUBLIC LANDS ACT
3605	Wsm	Jan 1, 2001	APPLICATION PENDING UNDER P.L.A.-SURFACE RIGHT WITHDRAWN

Those wishing to stake mining claims should consult with the Provincial Mining Recorders' Office of the Ministry of Northern Development and Mines for additional information on the status of the lands shown hereon. This map is not intended for navigational, survey, or land title determination purposes as the information shown on this map is compiled from various sources. Completeness and accuracy are not guaranteed. Additional information may also be obtained through the local Land Titles or Registry Office, or the Ministry of Natural Resources.

The information shown is derived from digital data available in the Provincial Mining Recorders' Office at the time of downloading from the Ministry of Northern Development and Mines web site.

General Information and Limitations
 Contact Information:
 Provincial Mining Recorders' Office
 Will et Green Miller Centre 933 Ramsey Lake Road
 Sudbury ON P3E 8B6
 Home Page: www.mndm.gov.on.ca/MNDMMINESLANDS/mimnmpge.htm

Toll Free
 Tel: 1 (888) 415-9846 ext 57
 Fax: 1 (877) 670-1444

Map Datum: NAD 83
 Projection: UTM (8 degree)
 Topographic Data Source: Land Information Ontario
 Mining Land Tenure Source: Provincial Mining Recorders' Office

This map may not show unregistered land tenure and interests in land including certain patents, leases, easements, right of ways, flooding rights, licences, or other forms of disposition of rights and interest from the Crown. Also certain land tenure and land uses that restrict or prohibit free entry to stake mining claims may not be illustrated.